

09

CHRYSLER SEBRING CONVERTIBLE



CHRYSLER

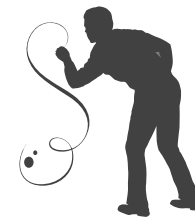


*Sebring Convertible Limited in Inferno Red Crystal Pearl.*



*Sebring is the best-selling convertible in America!<sup>1)</sup>*

<sup>1)</sup>Based on R.L. Polk 2008 MYTD and CYTD total registrations sales data.

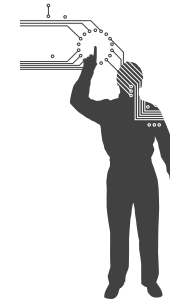


## DESIGN

From any angle, Sebring Convertible's stance radiates a poise that invites glances as effortlessly as it invites the sun itself. The availability of two distinctively different, fully automatic retractable tops confirm Sebring's design ingenuity. Just one look proves it. Take just one ride, and you will never forget it.



*Sebring Convertible Limited interior in Dark Slate Gray Royale Leather trim.*



## TECHNOLOGY

Some car companies offer gadgetry. We offer purposeful technology. Like our uconnect systems, for example. uconnect gps provides entertainment, information, communication, and navigation, all in the space of a traditional stereo. Its 30GB hard drive allows you to store photos and playlists, as well as rip and stash digital music files from CDs, integrated USB port, or exterior input jack. Its 6.5-inch touch-screen LCD monitor allows for seamless navigating through uconnect functions.



*Sebring Convertible Limited interior in Medium Pebble Beige/Cream  
with Tortoiseshell-style and Satin Silver accents.*

## INTERIOR

**1 Heated/cooled cup holder.** Cold morning, hot beverage. How do you keep it that way? Opt for Sebring Convertible's available heated/cooled cup holder. What about a nice cool beverage during a long, hot drive? No problem. The heated/cooled cup holder is standard equipment on Limited and included in the available Electronics Convenience Group package on Touring.



**2 Windscreen.** There are times when you want the wind in your hair and there are times when you do not. Take any concern off your mind with an available windscreen. Developed in the 100 mph-capable Chrysler Aero-Acoustic Wind Tunnel as part of Sebring Convertible's goal of delivering you a genuinely **quiet ride**. An exceptionally stiff body was designed with computer-aided engineering that orchestrated the various frequencies of individual components and systems to achieve maximum noise reduction for the total vehicle. From its aerodynamic headlamp modules to its low-profile windshield wipers, exterior mirrors, acoustic engine covers, extensive Pur<sup>®</sup> foam cavity sealing, and wind-sculpted sheetmetal, Sebring Convertible offers a markedly improved coefficient of drag (Cd) and enables the wind to whisper, rather than roar.

**3 Atmospheric lighting.** Sebring Convertible's cabin benefits from the elegance of atmospheric lighting, which helps passengers find their way in and out of the vehicle and bathes the rear footwells in the coolest of moods.

**4 Trunk capacity.** If you think the trunk capacity of a convertible needs to be somewhat restricted by definition, think again. Sebring Convertible offers over 12 cubic feet of cargo space with the retractable top up. But the true test comes when the top is down, and your trunk still has more than enough room to easily fit two full-size golf bags.

**Stain Repel.** This available stain-resistant, odor-resistant, antistatic seat fabric<sup>(1)</sup> employs a dual-action technology woven into the fabric itself to help repel and release stains without solvents.

**5 Seating for four adults.** Two-door access to comfortable seating for four is practical and convenient. Once inside, your rear-seat passengers will enjoy stretching out over a surprisingly large area with more than 33 inches of rear-seat leg room.

**Heated seats.** Take extra comfort in available, heated, leather-trimmed seating surfaces. This cozy feature is standard on Limited and available on Touring as part of the available Special Touring Group.

**Power seats.** Standard driver and front passenger six-way power seats allow for a highly personalized level of comfort.

**Folding luggage protector.** A standard folding luggage protector shields the retracted top from cargo in the trunk, and vice versa.

<sup>(1)</sup> Not compatible with aftermarket fabric-protecting coatings.





*Sebring Convertible Limited instrument panel with Tortoiseshell-style and Satin Silver accents.*

## TECHNOLOGY

**1 uconnect** The 6.5-inch touch-screen **uconnect gps** provides entertainment, information, communication, and navigation, all through an AM/FM/CD/DVD<sup>(1)</sup> stereo system. A 30GB hard drive allows you to store photos, playlists, maps, points of interest, as well as rip, stash, organize, and shuffle up to 4,200 digital music files from CDs, integrated USB port, or exterior input jack. The touch-screen allows you to easily change radio stations and play digital audio files. You also get the convenience of turn-by-turn navigation with real-time traffic updates using **SIRIUS® Satellite Radio**.<sup>(2)</sup> The included **uconnect phone** provides hands-free, voice-activation capability with your Bluetooth® compatible phone.

**2 uconnect studios** Like a menu offering the best of in-vehicle technology, **uconnect studios** features standard **SIRIUS Satellite Radio**. Gain access to over 130 channels, including 100% commercial-free music, sports, news, talk, entertainment, traffic, and weather.

**3 uconnect phone** Go high-tech with an in-vehicle, voice-activated communication system that allows you to talk on your Bluetooth compatible phone virtually hands-free. Comes bundled with **uconnect gps** or can be added as a stand-alone feature.

**4 uconnect web** Turn your vehicle into a WiFi Hotspot. This Authentic Chrysler Accessory by Mopar allows every passenger in your vehicle to harness the power and entertainment value of the Internet at the same time. Subscription required, sold separately.

**Boston Acoustics®** Six world-renowned, premium Boston Acoustics speakers and a 276-watt amplifier are standard on Limited.



### Steering wheel-mounted audio controls.

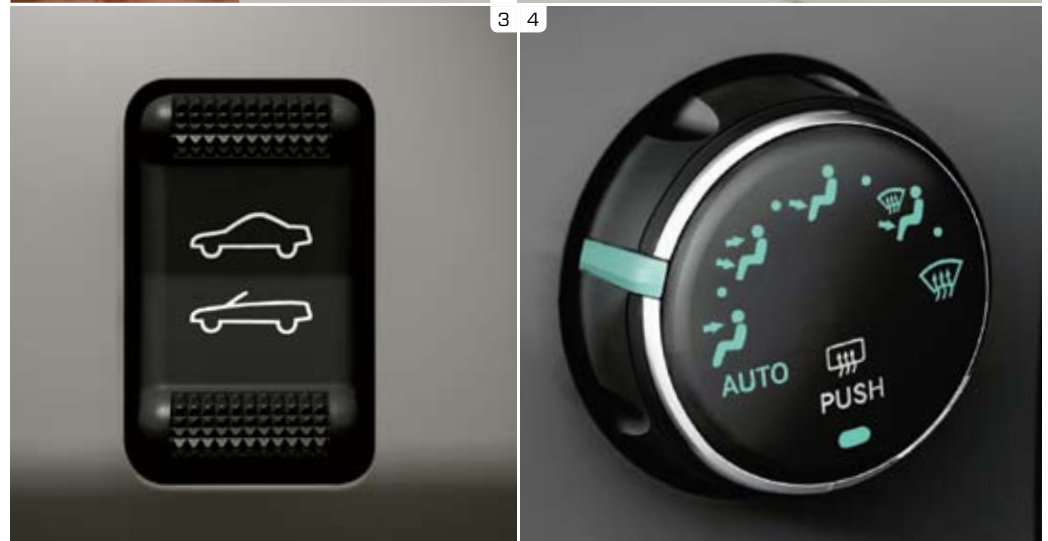
Conduct your own audio symphony without ever taking your hands off the steering wheel.

**2 Remote Start.** Sebring Convertible offers a remote start feature that operates by a push button on the key fob from up to 35 feet away. Without a doubt, the Remote Keyless/Illuminated Entry System puts a world of confidence and convenience at your fingertips. So here is the question: How do you roll down a car window from outside the car? Answer: When your car is a Sebring Convertible, you simply push a button to **operate windows from the key fob.**

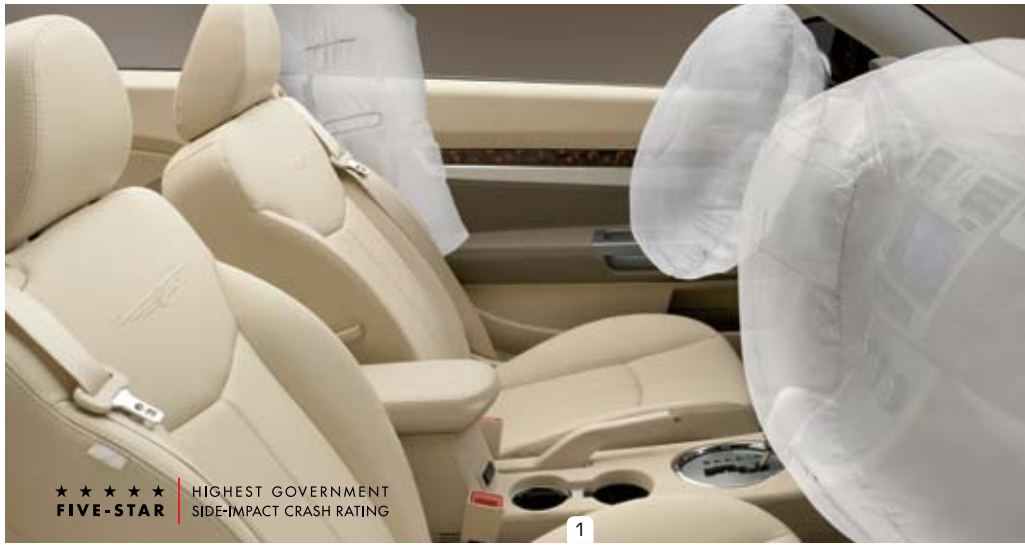
**3 One-touch power-top button.** Operate the power-retractable top from a conveniently located button on the instrument panel. It is all an automatic wonder of technology. There is no slow and cumbersome unlocking or locking of latches. And even if you are outside your vehicle, you can perform the very same operation by pushing the button on your key fob. It has simply never been any easier to drop your top.

**4 Automatic temperature control system.** Easy to read and easy to operate, Sebring Convertible's automatic temperature control system helps make the most of your comfort while in your mobile environment.

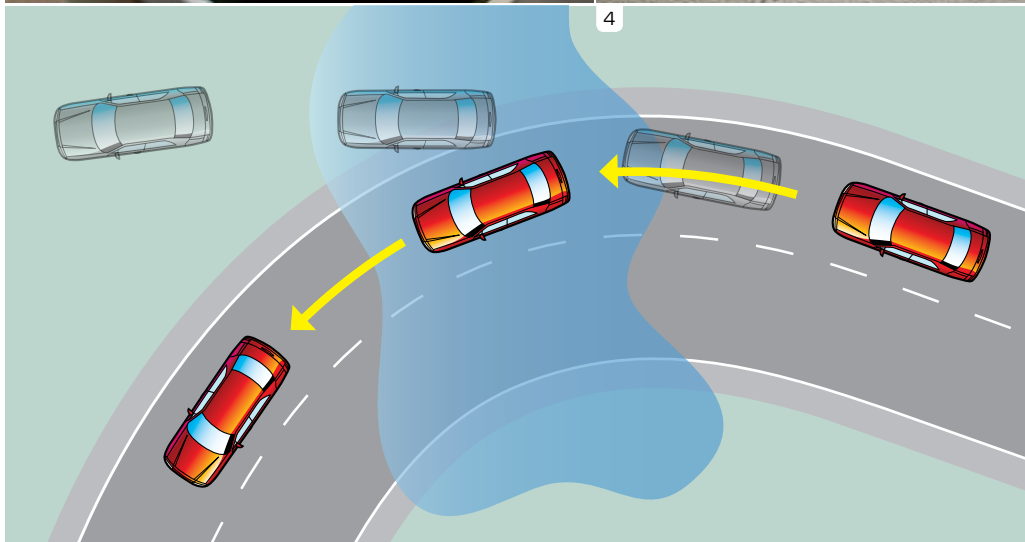
<sup>(1)</sup>uconnect in-dash DVD capability is not available in all states. See your dealer for details. <sup>(2)</sup>SIRIUS, the SIRIUS dog logo, and related marks are trademarks of SIRIUS Satellite Radio Inc. All other trademarks, service marks and logos are the property of their respective owners. All rights reserved. Subscription required. Pricing and programming content are subject to change. Not available in Alaska and Hawaii. For full Terms & Conditions, visit SIRIUS.com.







★★★★★  
**FIVE-STAR** | HIGHEST GOVERNMENT  
 SIDE-IMPACT CRASH RATING



## SAFETY AND SECURITY

**1 Five-Star side crash test rating.** Chrysler Sebring Convertible has earned a Five-Star crash test rating for side impact.<sup>(1)</sup> This represents the highest possible side crash safety rating from the National Highway Traffic Safety Administration (NHTSA).

**Air bags.** Standard advanced multistage driver and front-passenger air bags<sup>(2)</sup> provide nearly instantaneous front-seat occupant impact protection by matching air bag output to crash severity.

**Thorax supplemental side air bags.<sup>(2)</sup>** Extra side-impact protection for driver and front seat passenger is standard on all trim levels.

**2 Electronic Vehicle Information Center (EVIC).** Important stats such as distance to empty, temperature reading, compass, and average fuel economy are digitally displayed on the EVIC. A Tire Pressure Monitoring Display is also part of the EVIC. As an additional safety benefit, all Sebring Convertible models include a Tire Pressure Monitoring Warning Lamp.

**3 Sentry Key® Theft Deterrent System.** Help deter vehicle theft by making it virtually impossible to start the engine without possession of a properly encoded key. The same key fob operates the power-retractable top, power deck lid, remote start, and remote power window down functions.

**Hardtop security.** Indulge in the pleasure of open-air driving with complete peace of mind. Sebring Convertible Limited and Touring offer the extra security of a hard convertible top. With this hardtop option, you really do get the best of both worlds.

**Some little things offer big advantages.** In a convertible that strives to avoid compromise, it was imperative for Chrysler's design engineers to give Sebring as many advantages as possible. Sebring features front seat belts with pretensioners and load limiters, an energy-absorbing steering column and steering wheel, a body constructed with side-impact beams in every door, a front crumple zone, and an enhanced rear body structure.

**4 Electronic Stability Program (ESP).<sup>(3)</sup>** Designed to assist drivers in maintaining control of their vehicle at all times, ESP works in conjunction with Brake Assist and all-speed traction control to help maintain the vehicle's directional stability. Brake Assist helps the driver achieve maximum controlled braking in less than ideal situations.

**Antilock Brake System (ABS).** This standard safety and security feature affords premium stopping power using state-of-the-art electronics, providing faster response. ABS senses less than ideal conditions and helps to prevent wheel lockup offering steering control under extreme braking and/or slippery road conditions.

**Lifetime Powertrain Limited Warranty.<sup>(4)</sup>** As the owner of a Sebring Convertible, you deserve the ultimate peace of mind, so we provide you with the ultimate warranty: the Chrysler Lifetime Powertrain Limited Warranty. The first to be offered by any automaker. Ever. It demonstrates the confidence we have in our ability to produce quality vehicles with reliable and durable powertrains warranted to last a lifetime.



<sup>(1)</sup> Star ratings are part of the U.S. Department of Transportation's safecar.gov program ([www.safercar.gov](http://www.safercar.gov)). <sup>(2)</sup> Always sit properly in the seat with the seat belt fastened. Children 12 and under should always be in a backseat correctly using an infant or child restraint system, or the seat belt positioned correctly for the child's age and weight. <sup>(3)</sup> No system, no matter how sophisticated, can repeal the laws of physics or overcome careless driving actions. Performance is limited by available traction, which snow, ice and other conditions can affect. When the ESP warning lamp in the speedometer flashes, the driver needs to use less throttle and adapt speed and driving behavior to prevailing road conditions. Always drive carefully, consistent with conditions. Always wear seat belts. <sup>(4)</sup> No deductible. See dealer for a copy of limited warranty details. Non-Transferable. Not available on certain fleet vehicles.

## RETRACTABLE TOP SYSTEM



**Retractable top system.** Sebring Convertible's retractable top system exemplifies the Chrysler mission of delivering ingenuity with ease. It was designed to open and close the tonneau cover and unlock, retract, and stow the entire top system with no more than a button-push required on behalf of the driver. Its high-pressure hydraulic-powered flexibility allows it to disappear — whether in hardtop or soft top form — into the trunk while still providing enough room for two golf bags. A sensor in the trunk detects if the folding luggage protector is in place, ensuring that the trunk contents and the top itself are protected prior to the retracting and stowing of the convertible top.

Sebring Convertible is the first four-passenger convertible to offer either a power cloth soft top or retractable hardtop. Other Chrysler group firsts include: convertible-top-down and express-down-front-windows button on the key fob; three-piece power-retractable hardtop; automatic latching for soft top or retractable hardtop; and power hard tonneau.

**Two distinct tops.** Choose from the standard cloth soft top or the available retractable hardtop.

**One-touch electronic latching top.** Opening and closing a convertible top has never been easier, thanks to the all-electronic latching system, standard across all three Sebring Convertible trim levels.

## TRIM LEVEL LINEUP

**LIMITED** Designed to invigorate in every way, it gleams sophistication from a blend of elegance, contemporary design, and sleek lines outside and in. And goes far beyond ordinary convertibles by offering a truly premium interior with standard leather-trimmed seating for four adults, heated front seats, a six-speaker Boston Acoustics® sound system, and choice of standard cloth soft top or available retractable hardtop.



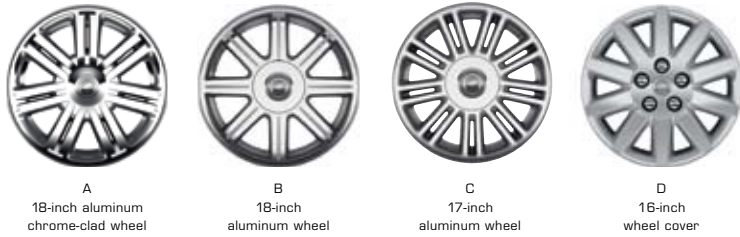
**TOURING** Well-equipped is a definite understatement with standard antilock brake system (ABS), stain-resistant, odor-resistant, antistatic Stain Repel seat fabric,<sup>(1)</sup> fold-flat front-passenger seatback, 17-inch aluminum wheels, and choice of standard cloth soft top or available retractable hardtop.



<sup>(1)</sup>Not compatible with aftermarket fabric-protecting coatings.

**LX** Offering so much more than mere practicality, it arrives complete with an extensive list of standard equipment and features including 4-speed automatic transmission, Remote Keyless/Illuminated Entry, power windows and locks, air conditioning, electronic speed control, AM/FM six-disc CD/DVD radio with MP3 auxiliary input jack, and standard cloth soft top.





	A	B	C	D
Sebring Limited	S			
Sebring Touring (with Special Touring Group)		P	S	
Sebring LX			O	S

S = Standard. P = Included in package noted in parentheses. O = Optional.



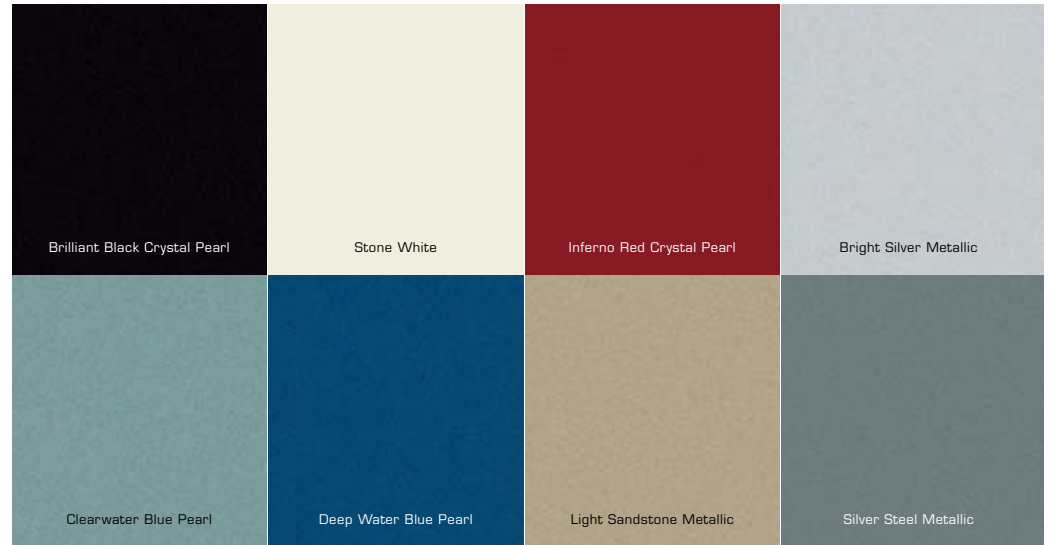
Configured in available retractable hardtop or retractable cloth soft top, Sebring is available in a myriad of color combinations. The cloth soft top is standard on LX, Touring, and Limited and is available in Black or Pebble Beige on Limited and in Black or Taupe on Touring. The optional hardtop is always painted to match Sebring's body-color.

## SOFT TOPS



<sup>(1)</sup> Not available with Bright Silver Metallic and Silver Steel Metallic exteriors. <sup>(2)</sup> Not available on Limited with Light Sandstone Metallic exterior.

<sup>(3)</sup> Not available with Bright Silver Metallic, Silver Steel Metallic, and Clearwater Blue Pearl exteriors.

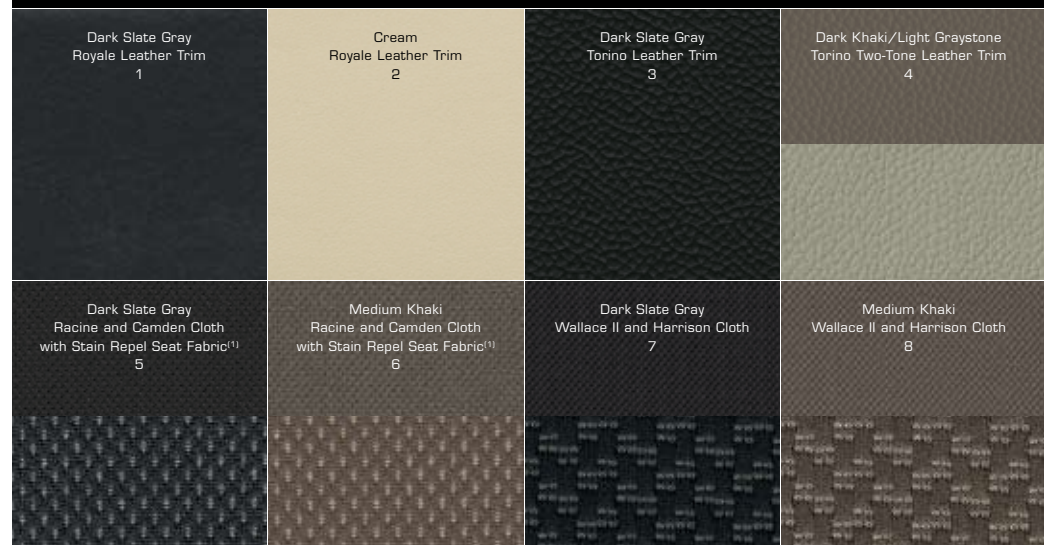


## EXTERIOR COLORS

	Brilliant Black Crystal Pearl	Stone White	Inferno Red Crystal Pearl	Bright Silver Metallic	Clearwater Blue Pearl	Deep Water Blue Pearl	Light Sandstone Metallic	Silver Steel Metallic
Limited	1,2	1,2	1,2	1	1,2	1,2	2	1
Touring	3,4,5,6	3,4,5,6	3,4,5,6	3,5	3,5	3,4,5,6	4,6	3,5
LX	5,6,7,8	5,6,7,8	5,6,7,8	5,7	5,7	5,6,7,8	6,8	5,7

<sup>(1)</sup> Not compatible with aftermarket fabric-protecting coatings.

## INTERIOR COLORS



	LX	Touring	Limited
<b>ENGINE/TRANSMISSION</b>			
<b>2.4L DOHC 16V I-4 World Engine</b> — 4-speed automatic	24C		
<b>2.7L DOHC 24V V6 Flex Fuel</b> <sup>(1)</sup> — 4-speed automatic		28E	
<b>3.5L High Output V6</b> — 6-speed AutoStick®			26G
<b>MECHANICAL</b>			
<b>Alternator</b> — 120-amp	S		
— 140-amp		S	S
<b>Battery</b> — 525-amp, maintenance-free	S	S	S
<b>Brakes</b> — 4-wheel disc, antilock	S	S	S
<b>Engine Block Heater</b>	O	O	O
<b>Outside Temperature Display</b>	S	S	S
<b>Remote Start System</b> — (Included in Convenience and Electronics Convenience Group)	P	P	S
<b>Speed Control</b> — Electronic with stalk-mounted controls	S	S	S
<b>Speedometer</b> — 120-mph, with tachometer	S	S	S
<b>Stabilizer Bars</b> — Front and rear	S	S	S
<b>Steering</b> — Power, rack-and-pinion	S	S	S
<b>Suspension</b> — Normal-duty	S		
— Touring		S	S
— Dampers, front and rear	S	S	S
<b>EXTERIOR FEATURES</b>			
<b>Antenna</b> — Removable short-mast	S	S	S
<b>Decklid Power Release</b>	S	S	S
<b>Door Handles</b> — Body-color	S	S	
— Bright			S
<b>Exhaust Tips</b> — Dual, bright			S
<b>Fog Lamps</b> — (Included in Special Touring Group)		P	S
<b>Fuel Tank</b> — 16.9-gallon	S	S	S
<b>Glass</b> — Tinted, front and rear Solar-Control	S	S	S
<b>Grille</b> — Bright/argent	S	S	S
<b>Hard Tonneau Cover</b>	S	S	S
<b>Headlamps</b> — Quad with headlamp-off time delay	S	S	S
— Automatic (included in Electronics Convenience Group)		P	S
<b>Hood Insulation</b>	S	S	S
<b>Mirrors</b> — Power, black	S		
— Power, heated, body-color		S	S
<b>Stone Guard</b> — Front	S	S	S
<b>Tires</b> — P215/65 R 16 BSW all-season	S		
— P215/60 R 17 BSW all-season	O	S	
— P215/55 R 18 BSW all-season touring (included in Special Touring Group)		P	S
— Compact spare	S	S	S
<b>Tops</b> — Power, cloth with remote top down on key fob	S	S	S
— Power, body-color, retractable hardtop with trunk lid liner with remote top down on key fob		O	O
<b>Windshield Wipers</b> — Variable intermittent	S	S	S
<b>INTERIOR FEATURES</b>			
<b>Air Conditioning</b> — Manual	S	S	
— Automatic temperature control (included in Electronics Convenience Group)		P	S
<b>Analog Clock</b>	S	S	S
<b>Bezels</b> — Color-keyed	S		
— Satin Silver		S	S
— Tortoiseshell-style accent			S

	LX	Touring	Limited
<b>INTERIOR FEATURES (CONTINUED)</b>			
<b>Console</b> — Floor with fore/aft sliding armrest, with dual storage compartments and rear courtesy light	S		
— Floor with fore/aft sliding padded armrest, with dual storage compartments and rear courtesy light		S	S
<b>Defroster</b> — Rear-window	S	S	S
<b>Door Locks</b> — Power	S	S	S
<b>Electroluminescent Cluster</b> — Includes outside temperature reading	S	S	S
<b>Electronic Vehicle Information Center (EVIC)</b> — Switches located on the center stack switch bank allow the driver to configure from a menu of useful information		S	S
<b>Floor Mats</b> — Premium, front and rear	S	S	S
<b>Heated/Cooled Cup Holder</b> — Built into front center console, maintains temperature range of 35° to 140° F (included in Electronics Convenience Group)		P	S
<b>Mirror</b> — Rearview, day/night with reading lamps	S	S	
— Rearview, auto-dimming with microphone and reading lamps (included with uconnect, Electronics Convenience Group and Navigation & Sound Group)		P	S
<b>Power Outlets</b> — 12V center stack-mounted	S	S	S
— 12V center console-mounted	S	S	S
<b>Shift Knob</b> — Urethane	S	S	
— Leather-wrapped (included in Special Touring Group)		P	S
<b>Steering Column</b> — Tilt/telescoping, manual	S	S	S
<b>Steering Wheel</b> — Sport	S	S	
— Leather-wrapped with audio controls (included in Special Touring Group)		P	S
— Tortoiseshell-style accents			S
— Audio controls (included in Special Touring Group)		P	S
<b>Windows</b> — Tinted with front and rear Solar-Control	S	S	S
— Power, front driver's and passenger with one-touch down with remote windows down on key fob	S	S	S
<b>Windscreen</b> — (Included in Special Touring Group)		P	S
<b>SEATING</b>			
<b>Front</b> — Cloth, low-back bucket	S		
— Stain Repel seat fabric; <sup>(2)</sup> low-back bucket (included in Convenience Group)		P	S
— Leather-trimmed, low-back bucket (included in Special Touring Group)		P	
— Premium leather-trimmed, low-back bucket			S
— Power, 6-way driver's and front-passenger seats	S	S	S
— Heated front (included in Special Touring Group)		P	S
<b>Rear</b> — Seats two adult passengers	S	S	S
<b>ENTERTAINMENT SYSTEMS</b>			
<b>Radio</b> — AM/FM/6-Disc DVD/MP3 (REG)	S	S	S
<b>uconnect</b> — uconnect gps — Includes AM/FM/CD/DVD <sup>(3)</sup> /HDD/MP3 radio with navigation and touch screen/voice recognition operation and real-time traffic updates (RER) (included in Navigation & Sound Group)		P	O
— uconnect studios — Includes SIRIUS Satellite Radio System with one-year subscription	S	S	S
— uconnect web — Subscription required, sold separately (Authentic Chrysler Accessory by Mopar)	O	O	O
<b>Sound Systems</b> — Six speakers	S	S	
— Six Boston Acoustics® speakers (included in Navigation & Sound Group)		P	S
<b>SAFETY AND SECURITY</b>			
<b>Air Bags</b> <sup>(4)</sup> — Advanced multistage for driver and front passenger	S	S	S
— Supplemental driver and front-passenger seat-mounted/head/thorax	S	S	S
<b>Child Seat Anchor System (LATCH)</b>	S	S	S
<b>Electronic Stability Program</b> <sup>(5)</sup> — With all-speed traction control		O	O
<b>Inside Emergency Trunk Lid Release</b>	S	S	S
<b>Remote Keyless/Illuminated Entry</b>	S	S	S
<b>Seat Belts</b> — 3-point at all seating positions	S	S	S
<b>Security Alarm</b> — (Included in Convenience and Electronics Convenience Groups)	P	P	S
<b>Security Key</b> ® — Antitheft engine immobilizer	S	S	S

	LX	Touring	Limited
<b>SAFETY AND SECURITY (CONTINUED)</b>			
<b>Tire Pressure Monitoring System</b> — Individual tire pressures shown on EVIC		S	S
<b>Tire Pressure Monitoring Warning Lamp</b>	S		
<b>uconnect phone<sup>(P)</sup></b> — Included with uconnect gps, includes auto-dimming rearview mirror with microphone.		O	O
<b>PACKAGES</b>			
<b>Convenience Group</b> — Stain Repel seat fabric <sup>(P)</sup> , security alarm, remote start system (includes top/window down on key fob)	O		
<b>Electronics Convenience Group</b> — Automatic headlamps, HomeLink® universal garage door opener, security alarm, auto-dimming rearview mirror, heated/cooled front console cup holder, automatic temperature controls, remote start system		O	
<b>Navigation and Sound Group 1</b> — AM/FM CD/DVD/MP3/30GB hard drive with navigation (FRER), Boston Acoustics® Six-Speaker System		O	
<b>Smoker's Group</b> — Removable ash receiver, cigar lighter	O	O	O
<b>Special Touring Group</b> — 18-inch aluminum wheels, P215/55R18 BSW tires, windscreen, heated driver's and front-passenger seats, leather/chrome shift knob, leather-wrapped steering wheel with audio controls, leather-trimmed seats, fog lamps			O

S = Standard. P = Included in package noted in parentheses. O = Optional.  
<sup>(1)</sup>Not available in CA, CT, MA, ME, NJ, NY, OR, PA, RI, VT and WA. A 2.7L gas engine will be substituted. <sup>(2)</sup>Not compatible with aftermarket fabric-protecting coatings. <sup>(3)</sup>uconnect in-dash DVD capability is not available in all states. See your dealer for details. <sup>(4)</sup>Certified to the Federal Regulations that allow less forceful front air bags. Always use seat belts. Children 12 and under should always be in a backseat correctly using an infant or child restraint system, or the seat belt positioned correctly for the child's age and size. <sup>(5)</sup>No system, no matter how sophisticated, can repeal the laws of physics or overcome careless driving actions. Performance is limited by available traction, which snow, ice and other conditions can affect. When the ESP warning lamp in the speedometer flashes, the driver needs to use less throttle and adapt speed and driving behavior to prevailing road conditions. Always drive carefully, consistent with conditions. Always wear seat belts. <sup>(6)</sup>Must use Bluetooth® compatible phone.  
 HomeLink is a registered trademark owned by Johnson Controls, Inc. iPod is a registered trademark of Apple Inc. All rights reserved. 'SIRIUS' and the SIRIUS dog logo, and related marks are trademarks of SIRIUS Satellite Radio Inc. All other trademarks, service marks and logos are the property of their respective owners. All rights reserved. Subscription required. Pricing and programming content are subject to change. Not available in Alaska and Hawaii. For full Terms & Conditions, visit SIRIUS.com. Chrysler, Mopar, Sentry Key and uconnect are registered trademarks of Chrysler LLC. Bluetooth is a registered trademark of Bluetooth SIG, Inc. Boston Acoustics is a registered trademark of Boston Acoustics, Inc.

	LX	Touring	Limited
<b>ENGINE SPECIFICATIONS</b>			
<b>Engine Type</b>	2.4L	2.7L	3.5L
<b>Horsepower (SAE net @ rpm)</b>	173 @ 6,000	186 @ 6,400	235 @ 6,400
<b>Torque (lb-ft @ rpm)</b>	166 @ 4,400	191 @ 4,000	232 @ 4,000
<b>Displacement (cc)</b>	2,360	2,736	3,518
<b>Bore x Stroke (in)</b>	3.46 x 3.82	3.38 x 3.09	96 x 81
<b>Compression Ratio</b>	10.5:1	9.9:1	10.0:1
<b>Valve Train Configuration</b>	16V, DOHC	24V, DOHC	24V, SOHC

	LX	Touring	Limited
<b>EXTERIOR DIMENSIONS<sup>(1)(2)</sup></b>			
<b>Wheelbase</b>	108.9	108.9	108.9
<b>Overall Length</b>	193.8	193.8	193.8
<b>Overall Width</b>	71.5	71.5	71.5
<b>Overall Height</b>	58.4	58.4	58.4
<b>Track — Front</b>	61.8	61.8	61.8
— Rear	61.8	61.8	61.8
<b>Turning Diameter (ft)</b>	36.5	36.5	36.5
<b>INTERIOR DIMENSIONS<sup>(2)</sup></b>			
<b>Maximum Seating Capacity</b>	4	4	4
<b>Front — Head Room w/soft</b>	38.7	38.7	38.7
— Head Room w/hard	39.0	39.0	39.0
— Leg Room	42.4	42.4	42.4
— Shoulder Room	56.4	56.4	56.4
— Hip Room	53.3	53.3	53.3

	LX	Touring	Limited
<b>WEIGHT AND CAPACITIES</b>			
<b>Recommended Fuel</b>	Regular Unleaded	Regular Unleaded	Mid-Grade Unleaded
<b>Fuel Tank Capacity (gal)</b>	16.9	16.9	16.9
<b>Fuel Economy<sup>(1)</sup></b>			
— City (mpg)	20	18	16
— Highway (mpg)	29	26	26
<b>Base Curb Weight (lb)</b>	3,742	3,847	3,959
<b>Towing Capacity (lb)</b>	1,000	1,500	2,000

	LX	Touring	Limited
<b>INTERIOR DIMENSIONS (CONTINUED)<sup>(2)</sup></b>			
<b>Rear — Head Room w/soft</b>	37.0	37.0	37.0
— Head Room w/hard	36.3	36.3	36.3
— Leg Room	33.5	33.5	33.5
— Shoulder Room	48.5	48.5	48.5
— Hip Room	44.2	44.2	44.2
<b>Passenger Volume (cu ft)</b>	88.3	88.3	88.3
<b>Cargo Volume (cu ft) with top up</b>	12.1	12.1	12.1

<sup>(1)</sup>EPA est. mpg.  
<sup>(2)</sup>All dimensions in inches unless otherwise noted.



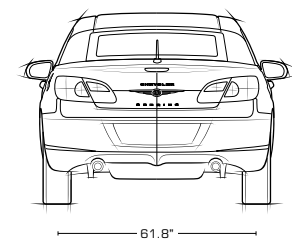
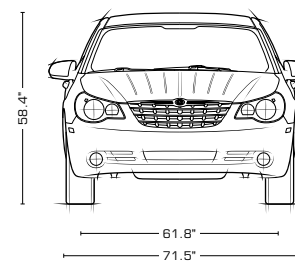
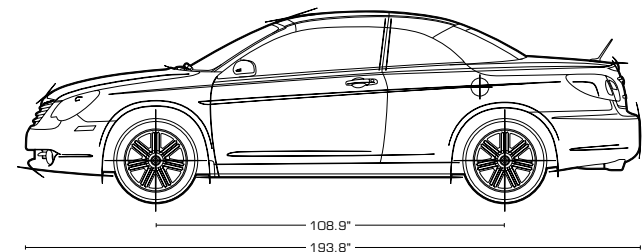
**2.4L World Engine.** For real fuel efficiencies and genuine four-passenger convertible comforts, this powerful I-4 engine delivers an **EPA estimated 20 city, 29 highway mpg.** The standard 2.4L World Engine utilizes dual Variable Valve Timing (VVT) to produce an exceptionally smooth and powerful 173 hp. It is matched to an equally advanced 4-speed automatic transmission.



**2.7L Flex Fuel V6 Engine.<sup>(1)</sup>** The 2.7L Flex Fuel V6 engine produces 186 hp and 191 lb-ft torque, all while sipping gasoline or cleaner-burning E85. This modern power plant offers an **EPA estimated 18 city, 26 highway mpg** matched to an advanced 4-speed automatic transmission.



**3.5L High Output engine.** The available 3.5L High Output V6 engine is matched to a highly evolved 6-speed AutoStick® transaxle which generates 235 hp and 232 lb-ft of torque. Perhaps most surprisingly, all of this speed and power comes complete with an impressive **EPA estimated 16 city, 26 highway mpg.**



## CHRYSLER.COM

Our Web site offers detailed information on all Chrysler products. You can virtually assemble any vehicle you like. Simply choose the model with your favorite color combinations, equipment, and features — and then price it all out.

## CALL 1-800-CHRYSLER.

Our friendly and knowledgeable product information specialists are available seven days a week, 8 a.m. – midnight (EST) to answer your questions.

**Lifetime Powertrain Limited Warranty.** No deductible. See dealer for a copy of limited warranty details. Non-Transferable. Not available on SRT® Hybrid System components (including transmission) and certain fleet vehicles.

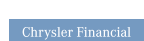
**Warranty.** New Chrysler vehicles are covered by a 3-year or 36,000-mile Basic Limited Warranty. See your dealer for a copy of this limited warranty. Excludes normal maintenance and wear items.

**Chrysler Financial.** Chrysler Financial delivers Chrysler, Jeep, and Dodge customers a personal, worry-free automotive financing experience. More than just another finance company with competitive rates, Chrysler Financial stands behind you through life's twists and turns by offering fast approvals, flexible terms and unparalleled personalized service. Visit cf.com or your Chrysler dealer to discover all that Chrysler Financial offers. Taking care of you, all along the way.

**Chrysler Auto Insurance.**<sup>(1)</sup> The only insurance guaranteed to repair your vehicle using Authentic Chrysler Collision Repair Parts by Mopar for as long as you own your Chrysler vehicle, and up to \$100 off your deductible when those repairs are done at a Chrysler dealership — all at rates that are tough to beat. For a free quote, visit chryslerautoinsurance.com or call (877) 244-1531 and mention keycode GLBXXX.

**Chrysler Service Contracts.** Your Chrysler is one of the most inspiring vehicles on the road. Why not protect your investment with a Chrysler Service Contract or Maintenance Plan? For more information, see your Chrysler dealer, call (800) 442-2666 or visit servicecontracts.chrysler.com.

**Authentic Chrysler Accessories by Mopar** are designed specifically for your Chrysler vehicle for exceptional fit, finish and performance. Visit your dealership or mopar.com.



All product illustrations, specifications and competitive comparisons are based upon current information at the time of publication approval. Although descriptions are believed correct, complete accuracy cannot be guaranteed. Chrysler LLC reserves the right to make changes at any time, without notice or obligation, in prices, specifications, equipment, colors and materials, and to change or discontinue models. Some of the equipment shown or described throughout this catalog is available at extra cost and/or may be subject to late availability. See your dealer for the latest information.

## VISIT YOUR DEALER.

Your Chrysler dealer's knowledgeable and professionally trained staff will guide you through the shopping process with expert advice.

**uconnect.** This suite of integrated digital systems bundles entertainment, information, and communication. For more information, visit your dealer.

**SIRIUS.** SIRIUS Satellite Radio delivers over 130 channels, including 100% commercial-free music, sports, news, talk, entertainment, traffic and weather. Factory-installed SIRIUS Satellite Radio includes a one-year subscription. For more information, go to SIRIUS.com.

**SmartWay.** The SmartWay® certification system identifies each vehicle's air pollution and greenhouse gas performance.<sup>(2)</sup> Lower emissions earn a higher score, and those vehicles with the best scores receive certification. Sebring Convertible, when equipped with a 2.4L World Engine, is SmartWay certified.

**Chrysler Rewards Visa**<sup>(3)</sup> Earn 5 points per dollar charged at your Chrysler dealership and 1 point per dollar everywhere Visa® is accepted. Whether you're saving points for your down payment or for your vehicle's scheduled maintenance, it pays to be a Chrysler Rewards Visa cardholder. For more information or to apply, visit chryslercreditcard.com or call (800) 478-6179.

**Chrysler Gift Gallery** pays tribute to the finer things in life. With everything from men's and women's apparel to accessories and designer collectibles, you are sure to take your style to the next level. View the entire collection of authentic merchandise at chrysler.com/giftgallery.

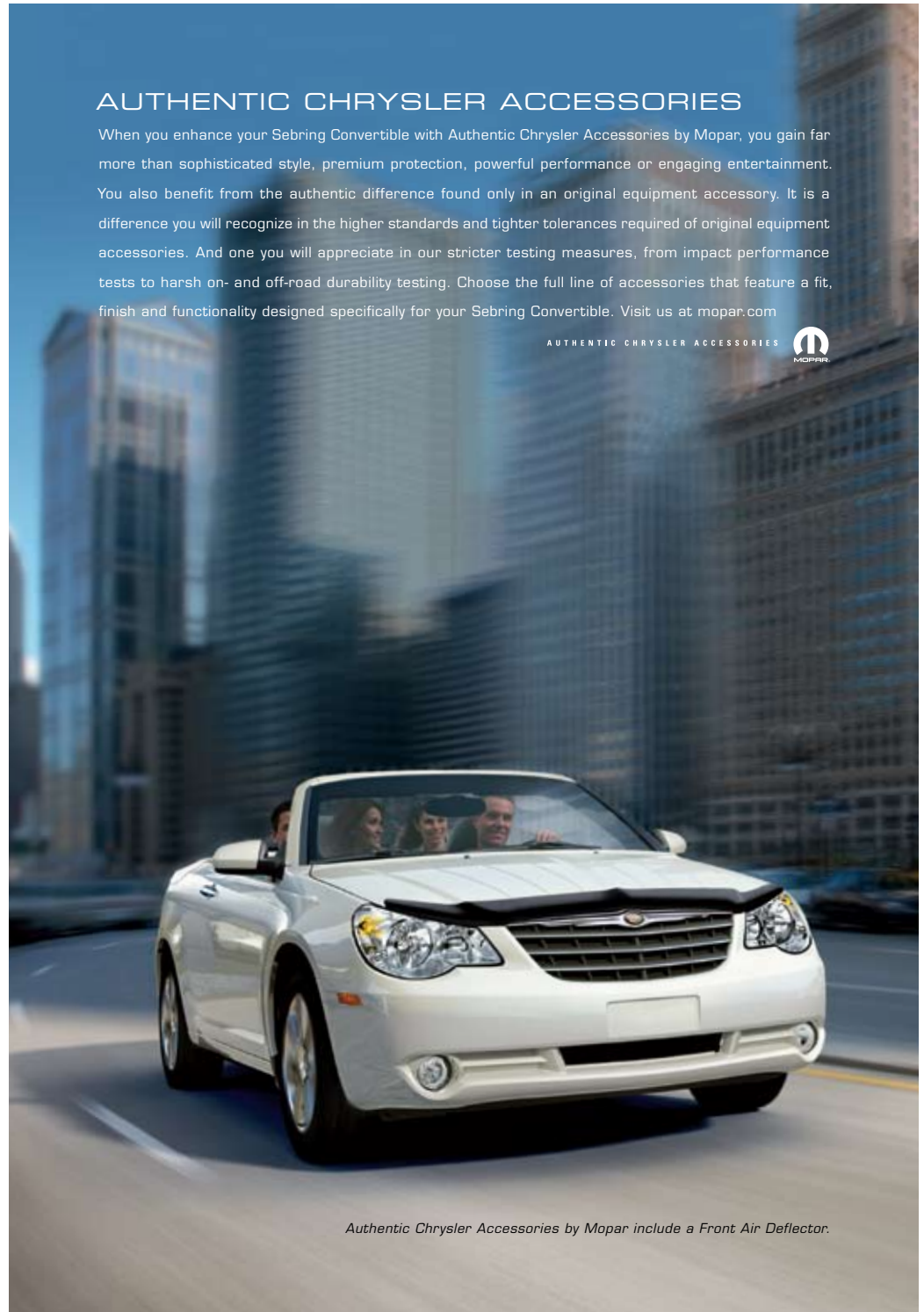
**Honoring Those Who Serve.** Chrysler LLC proudly supports the members of the U.S. Armed Forces and their families.

<sup>(1)</sup>Insurance is underwritten by member companies of American International Group, Inc. <sup>(2)</sup>Based on 2009 EPA SmartWay Designation. Please visit [www.epa.gov/greenvehicles](http://www.epa.gov/greenvehicles) for a list of the specific vehicle types that meet the SmartWay standards. SmartWay is a service mark of the U.S. Environmental Protection Agency. <sup>(3)</sup>The Chrysler Rewards Visa credit card is issued by FIA Card Services, N.A.

## AUTHENTIC CHRYSLER ACCESSORIES

When you enhance your Sebring Convertible with Authentic Chrysler Accessories by Mopar, you gain far more than sophisticated style, premium protection, powerful performance or engaging entertainment. You also benefit from the authentic difference found only in an original equipment accessory. It is a difference you will recognize in the higher standards and tighter tolerances required of original equipment accessories. And one you will appreciate in our stricter testing measures, from impact performance tests to harsh on- and off-road durability testing. Choose the full line of accessories that feature a fit, finish and functionality designed specifically for your Sebring Convertible. Visit us at mopar.com

AUTHENTIC CHRYSLER ACCESSORIES



Authentic Chrysler Accessories by Mopar include a Front Air Deflector.