



# '65 OLDSMOBILE Station Wagons

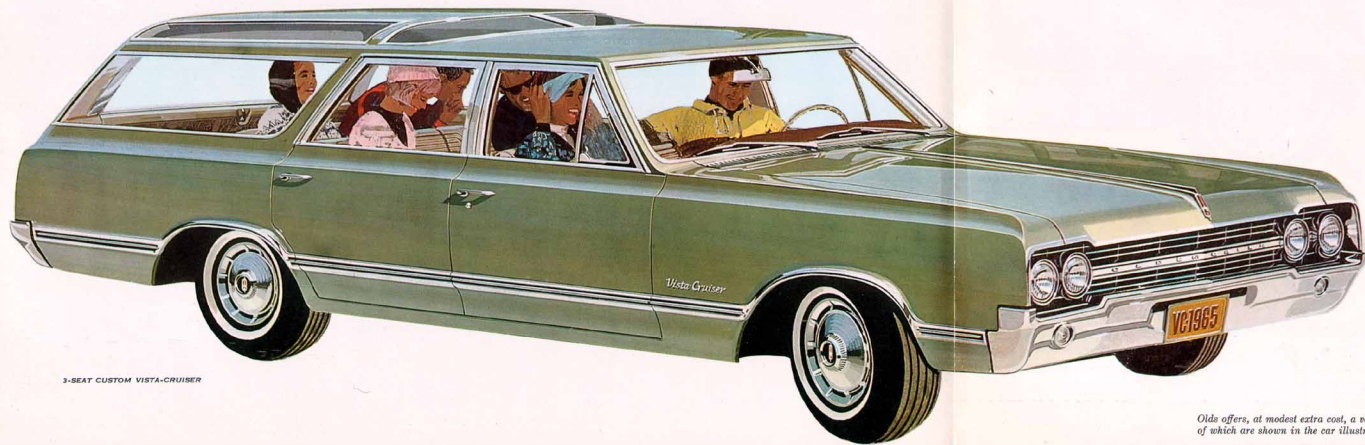
*Styled to go . . . where the action is!*



## Versatile 1965 Oldsmobile Vista-Cruisers



**New sky's-the-limit look in station wagons!** Here—under one roof—all the niceties a family on the go could want. Living room comfort. Storage room spaciousness (over 100 cubic feet of cargo area)! Rumpus room durability that takes the most rambunctious kids in stride. Supple 4-coil suspension, 120-inch wheelbase make back roads seem a whole lot smoother. And a lively-performing V-8 with up to 315 h.p.! That's Vista-Cruiser . . . in four exciting versions!



3-SEAT CUSTOM VISTA-CRUISER



### Sit up and see out!

Unique raised Vista-Roof—with tinted glass—lets you make the scene in comfort. Provides extra height, too, for easy handling of tall cargo!

### Forward-facing third seat!

Everybody faces the action in a Vista-Cruiser! Rear seats are entered through second door, fold down easily. (Two-seat models also available.)

### Hidden underfloor compartment!

Handy "safety deposit box" lets you stow valuables out of sight. When closed, lid looks like part of the floor. Lock available, too, if you wish.

### Over 100 cubic feet of cargo space!

Gives you more toting space than just about any wagon going—8 feet long by nearly 5 feet wide! Tailgate lowers to provide level loading deck.



Olds offers, at modest extra cost, a variety of options and accessories, many of which are shown in the car illustrations and described on the back cover.



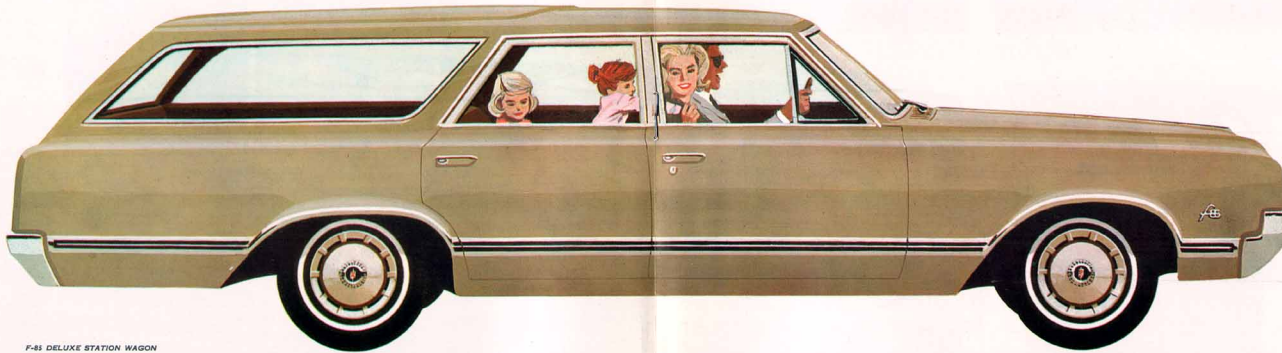
**Wide-open spaces on wheels!**  
 You can take it with you in an F-85 wagon!  
 Lower the one-piece tailgate and look: A generous  
 85.2 cubic feet of wide-open cargo storage area!



**Beautifully practical!**  
 Handsome all-Moroccan or Moroccan-and-cloth  
 upholstery is practical, easily cleaned . . . comes  
 in a wide choice of attractive color combinations.



**Electric rear window!**  
 You can regulate ventilation, facilitate loading  
 from the driver's seat! Handy instrument panel  
 switch. Modest extra-cost option on all wagons.



F-85 DELUXE STATION WAGON

## New Family Economy-Size F-85 Station Wagons

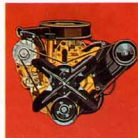


*Everything's easy to take . . . including the price!* This handsome F-85 wagon is designed to measure up to your fondest expectations. Smartly proportioned outside on a 115-inch wheelbase. Plentifully proportioned inside, with 85.2 cubic feet of loadspace that's positively a glutton for cargo! Two high-stepping V-8 power plants and an Econ-O-Way V-6 that really knows how to stretch a gallon of gas. Quite a wagon? You bet it is! And it's yours in either of two models.

*Olds offers, at modest extra cost, a variety of options and accessories, many of which are shown in the car illustrations and described on the back cover.*



**Cutlass V-8.**  
 Performance leader  
 of the Olds  
 wagon lineup!



**Jetfire Rocket V-8.**  
 Light but lively!  
 Delivers 250 h.p.  
 on regular gas!



**Econ-O-Way V-6.**  
 Saves money by  
 the mile. Available  
 on both models.

**Three power plants, three transmissions—built for big loads and long hauls.**

F-85 wagons have the power to please anybody! There's the zesty Jetfire Rocket V-8 that delivers a new high of 250 horsepower on regular gas. The Econ-O-Way V-6 that puts extra miles between gas stops. Or, if you wish, the superbly responsive 315-h.p. Cutlass V-8 at extra cost. Name your action—Oldsmobile's F-85 has it! Same goes for transmissions: standard 3-speed synchromesh; Jetaway Drive or 4-on-the-floor, both extra-cost options. And they're all planted on Oldsmobile's rugged Guard-Beam Frame!





HOLIDAY SPORTS SEDAN

## Ninety-Eight



LUXURY SEDAN



HOLIDAY SPORTS COUPE



TOWN SEDAN



CONVERTIBLE

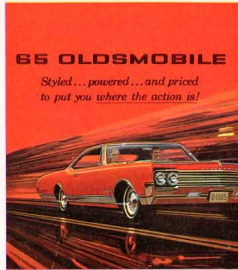


COUPE

## Starfire



CONVERTIBLE



### 65 OLDSMOBILE

*Styled... powered... and priced  
to put you where the action is!*

*Olds offers, at modest extra cost, a variety of options  
and accessories, many of which are shown in the  
car illustrations and described on the back cover.*



DELTA HOLIDAY COUPE

## Dynamic 88



DELTA HOLIDAY SEDAN



DELTA CELEBRITY SEDAN



CONVERTIBLE



HOLIDAY COUPE



HOLIDAY SEDAN



CELEBRITY SEDAN



SPORTS COUPE

## Jetstar I



HOLIDAY SEDAN

## Jetstar 88



HOLIDAY COUPE



CONVERTIBLE



CELEBRITY SEDAN



CUTLASS HOLIDAY COUPE

## F-85



CUTLASS SPORTS COUPE



CUTLASS CONVERTIBLE



V-6 SPORTS COUPE



DELUXE FOUR-DOOR SEDAN



FOUR-DOOR SEDAN



CLUB COUPE



3-SEAT CUSTOM  
VISTA-CRUISER

## Station Wagons



2-SEAT CUSTOM VISTA-CRUISER



3-SEAT VISTA-CRUISER



2-SEAT VISTA-CRUISER



F-85 DELUXE STATION WAGON



F-85 STATION WAGON

## Options And Accessories

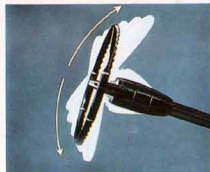
The following accessories—optional at extra cost on some models—help tailor the wagon of your choice to your comfort and convenience. Carpeted Load Floor • Electric Tailgate Window • Power Steering • Power Brakes • Roof-top Luggage Carrier • Luggage Compartment Lock • Power Windows • Jetaway Drive • Tilt-Away Steering Wheel adjusts to 7 positions • Soft-Ray Tinted Glass • Four-Season Air Conditioning gives efficient cooling, is integral with heater • Wheel Discs • Deluxe Pushbutton Radio • Bi-Phonic Rear Seat Speaker • Power Antenna • Many Heavy-Duty Options such as Heavy-Duty Shock Absorbers, Springs, etc., are also available at extra cost.



Roof-top Luggage Rack



Four-Season Air Conditioning



Tilt-Away Steering Wheel

## 1965 Oldsmobile Specifications

	VISTA-CRUISER		F-85	
<b>GENERAL:</b>	Wheelbase	120"	115"	
	Overall Length	207.7"	204.4"	
	Overall Width	73.8"	73.8"	
	Overall Height	58.3"	55.4"	
	Tread, Front-Rear	58.0" - 58.0"	58.0" - 58.0"	
	Shipping Weight, lbs.	3741 (2-seat)	3402 (V-8)	
	Tire Size	7.75 x 14"	7.35 x 14"	
<b>BODY:</b>	Cargo Capacity	106 cu. ft.*	85.2 cu. ft.	
	Maximum Floor Length	97.5"	92.0"	
	Cargo Width	53.0"	53.0"	
	Cargo Height	33.7"	31.0"	
	Headroom, Front	37.8"	37.8"	
	2nd Seat	40.4"	38.4"	
	3rd Seat	36.8"	—	
<b>ENGINE:</b>	Type, Standard	Jetfire Rocket V-8†	Econ-O-Way V-6	Jetfire Rocket V-8†
	Horsepower	250	155	250
	Torque, lb.-ft.	335	225	335
	Displacement, cu. in.	330	225	330
	Fuel	Regular	Regular	Regular
<b>CHASSIS:</b>	Frame, Guard-Beam with 4-crossmembers • Front Suspension, coil spring with counter-dive and stabilizer bar • Rear Suspension, 4-link with Twin-Triangle Stability and coil springs • Brakes, self-adjusting with Air-Scoop cooling flanges; brake lining area 173.6 sq. in. (Vista-Cruiser); 156.3 sq. in. (F-85) • Exhaust System, reverse-flow; aluminized.			

\*102 cu. ft. on 3-seat models.

†Cutlass V-8 optional at extra cost. 315-h.p., 10.25-to-1 compression ratio; premium fuel.

ACCESSORIES AND POWER FEATURES DESCRIBED HEREIN LISTED IN THIS CATALOG ARE OPTIONAL AT EXTRA COST UNLESS OTHERWISE SPECIFIED. A PARTIAL LIST OF ACCESSORIES APPEARS AT LEFT. A FULL PRICE LIST FOR ALL MODELS AND OPTIONS IS AVAILABLE AT ANY LOCAL AUTHORIZED OLDSMOBILE QUALITY DEALER'S. OLDSMOBILE RESERVES THE RIGHT TO MAKE CHANGES AT ANY TIME WITHOUT NOTICE. IN PRICES, COLORS, MATERIALS, EQUIPMENT, SPECIFICATIONS AND MODELS, AND ALSO TO DISCONTINUE MODELS. 8-44 LITHO IN U.S.A.

BLAKE CADILLAC-OLDS, INC.  
2222 Paxton St.  
HARRISBURG, PA.