



1990 BUICK EXTERIOR COLORS



Exterior Colors



Arctic White
Code 40



Diamond White
Code 93



Copper Beige
Code 52



Camel Beige
Code 57



Light Driftwood Met.
Code 33



Platinum Beige FM
Code 95



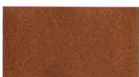
Palomino Brown Met.
Code 64



Saddle Brown Met.
Code 62



Beechwood Brown Met.
Code 57



Walnut Brown Met.
Code 69



Sable Brown Met.
Code 59



Chestnut Brown Met.
Code 66



Sterling Silver Met.
Code 12 Code 13



Dove Gray
Code 18



Gunmetal Gray Met.
Code 85



Slate Gray Met.
Code 15



Sparkling Black Met.
Code 14 Code 41



Bright Red
Code 81



Flame Red Met.
Code 74



Light Maple Red Met.
Code 89



Ruby Red Met.
Code 72



Dark Maple Red Met.
Code 78



Claret Red Met.
Code 76



Dark Maple Red Met.
Code 79



Ice Blue Met.
Code 22



Mist Blue Met.
Code 26



Maui Blue Met.
Code 23



Sapphire Blue
Code 27 Met. / Code 83 FM



Ocean Blue Met.
Code 29



Midnight Blue Met.
Code 28

Color Availability

Color	Code No.	Sky/Jark	Century	Regal	LeSabre	Electric Park Avenue	Ultra	Estare Wagon	Riviera	Reatta
Sterling Silver Met.	12									
Sterling Silver Met.	13				*					
Sparkling Black Met.	14									
Slate Gray Met.	15									
Dove Gray	18				*					
Ice Blue Met.	22									
Maui Blue Met.	23									
Mist Blue Met.	26									
Sapphire Blue Met.	27									
Midnight Blue Met.	28									
Ocean Blue Met.	29									
Light Driftwood Met.	33									
Arctic White	40									
Black	41									
Copper Beige	52									
Camel Beige	57		**							
Beechwood Brown Met.	57									
Sable Brown Met.	59									
Saddle Brown Met.	62									
Palomino Brown Met.	64				*					
Chestnut Brown Met.	66				*					
Walnut Brown Met.	69									
Ruby Red Met.	72									
Flame Red Met.	74									
Claret Red Met.	76									
Dark Maple Red Met.	78									
Dark Maple Red Met.	79									
Bright Red	81									
Sapphire Blue FM	83				* +				+	
Gunmetal Gray Met.	85									
Light Maple Red Met.	89									
Diamond White	93								‡	
Platinum Beige FM	95				+				+	

‡ Pearlescent [Extra Cost] + Firemist [Extra Cost] *NA on Ultra **NA GS Sedan or Coupe.
Note: All colors are clearcoat paint except as indicated.

Vinyl Tops



White • Code 11
LeSabre, Electra, Ultra,
Riviera



Medium Blue •
Code 83 Riviera



Dark Brown •
Code 66
Electra, Riviera



Silver • Code 13
Skylark LE, Riviera



Dark Blue •
Code 28 LeSabre,
Electra, Ultra, Riviera



Light Brown •
Code 64 Riviera



Black • Code 19
LeSabre, Electra, Ultra,
Riviera



Saddle • Code 62
LeSabre



Taupe • Code 95
Electra, Ultra, Riviera



Black Metallic •
Code 18 Skylark LE



Red • Code 72
Skylark LE, Ultra,
Riviera



Slate • Code 18
Riviera



Light Blue •
Code 22 Skylark LE



Dark Red •
Code 76 LeSabre,
Electra, Ultra, Riviera



Medium Slate •
Code 85 LeSabre,
Electra, Ultra, Riviera

Reatta Convertible Tops



White Vinyl
Code 11



Saddle Vinyl
Code 58



Red Cloth
Code 76



Black Cloth
Code 19



Blue Cloth
Code 28

Designers' Accent Paint Treatments



14
14

Available: Skylark LE



27
85

Available: Regal GS
Sedan



72
13

Standard: Ultra
Available: Regal
Coupe



72
76

Available: Skylark LE



28
85

Available: Regal GS
Sedan



28
13

Standard: Ultra



22
27

Available: Skylark LE,
Regal Coupe



40
85

Available: Regal GS
Sedan



41
13

Standard: Ultra



13
85

Available: Skylark LE,
Regal Coupe,
Regal GS Sedan



72
85

Available: Regal GS
Sedan



40
13

Standard: Ultra



14
13

Available: Skylark LE,
Regal Coupe



76
85

Available: Regal GS
Sedan



76
13

Standard: Ultra



14
85

Available: Regal GS
Sedan



85
85

Available: Regal GS
Sedan



85
13

Standard: Ultra



22
85

Available: Regal GS
Sedan




95
13

Standard: Ultra



Buick Motor Division, General Motors Corporation, reserves the right to make changes at any time, without notice, in prices, colors, materials, equipment, specifications, and models; and also to discontinue models. Let's get it together . . . buckle up.

©1989 General Motors Corporation. All Rights Reserved. Buick, Skylark, Century, Regal, LeSabre, Electra/Park Avenue, Riviera, Reatta and  are registered trademarks of General Motors Corporation.

BSP 90-29 Rev.

Litho in U.S.A.