



1992 BUICK

WHY SHOULD I CONSIDER A NEW BUICK?

A good many features separate Buick

from a lot of shiny metal blurring the highways,

but two words go a long way toward answering

your question . . . Buick Quality.

It is in the design. It lives in the engineering.

It is found in the seamless flow of power, the

seating material and the road feel. It is evident

in the clarity of information from gage to eye, the

comfortable proximity of controls and the

rich detail throughout.

BUICK QUALITY
IS DEEPSET AND LASTING;
IT IS THE VERY ESSENCE AND
SOUL OF BUICK.

The re-engineering of Buick over the

last four years started with a quality mandate and

a blank sheet of paper. Goals were not only

achieved, but exceeded.

Buick Quality is deepset and lasting; it is the

very essence and soul of Buick.

It is why, if you are looking at a Buick, you

are looking at the best that Buick has to offer.

For all these reasons, and more, we invite

you to consider a new Buick.



PARK AVENUE ULTRA

2

PARK AVENUE

5

RIVIERA

9

REGAL SEDAN

12

REGAL COUPE

16

LESABRE

21

SKYLARK

24

CENTURY

29

ROADMASTER SEDAN

32

ROADMASTER ESTATE WAGON

36

BUYER'S GUIDE

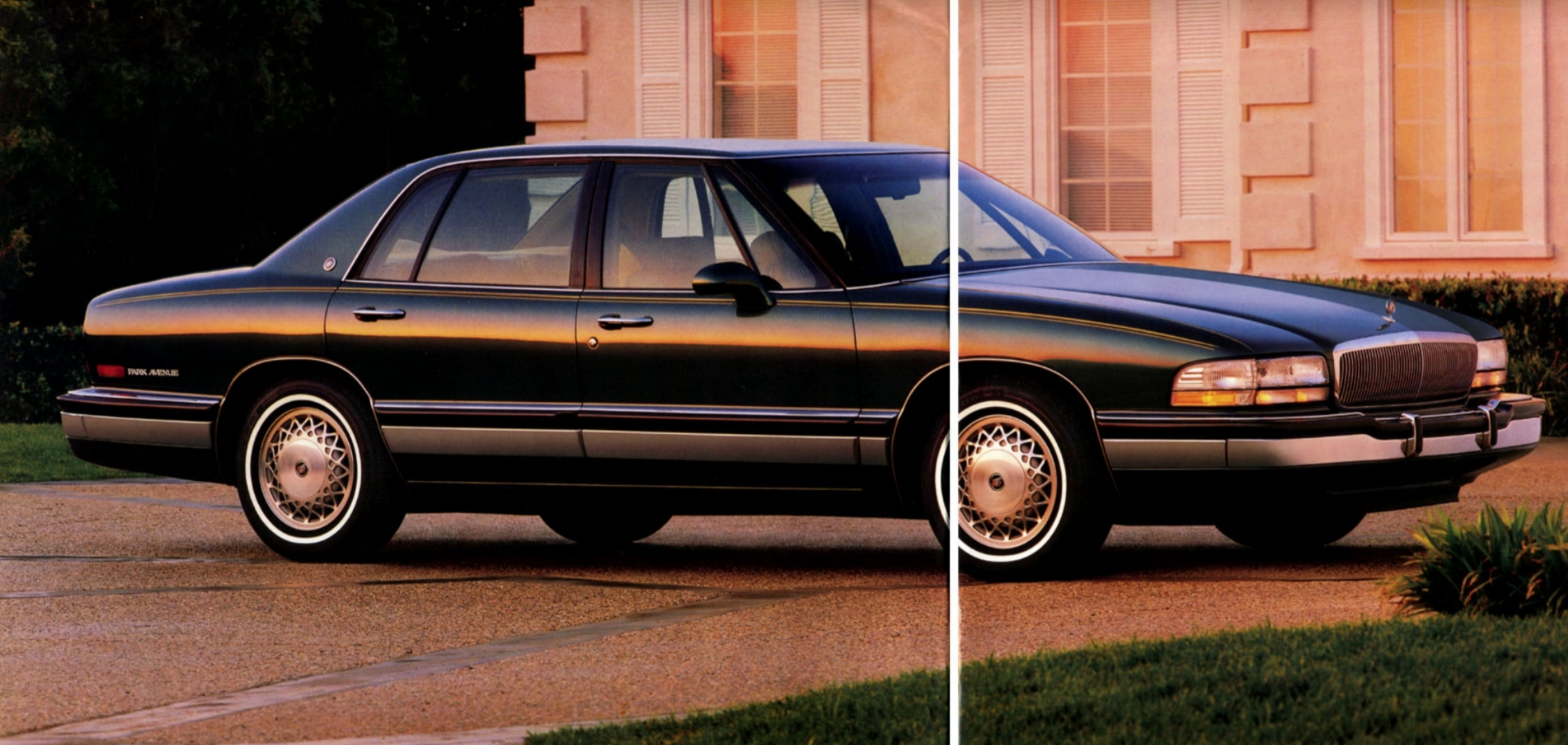
39



PARK AVENUE ULTRA

Ultra: It means superiority, beyond the expected. Buick Park Avenue Ultra gives fresh meaning to the word with standard features like a powerful, supercharged 3800 V-6 engine. A feeling of solidity is yours, thanks to sophisticated body engineering which isolates you and your passengers from the harsh realities of imperfect roads. And a lengthy list of luxury features is yours to enjoy, throughout. The 1992 Buick Park Avenue Ultra: American know-how at its best.





PARK AVENUE

The muscular elegance of Park Avenue's rounded body evades the wind with an impressively low 0.32 drag coefficient. Its looks are refined and smooth, as is the transfer of V-6 power to the road.


The design philosophy behind this premium American motorcar included a close look at 400 features of competitive luxury cars, with the goal of achieving "equal or better" engineering on all counts.

Count on Buick Quality in the 1992 Park Avenue.

GRAPHIC PROOF THERE IS
MORE THAN ONE WAY
TO DO IT RIGHT.

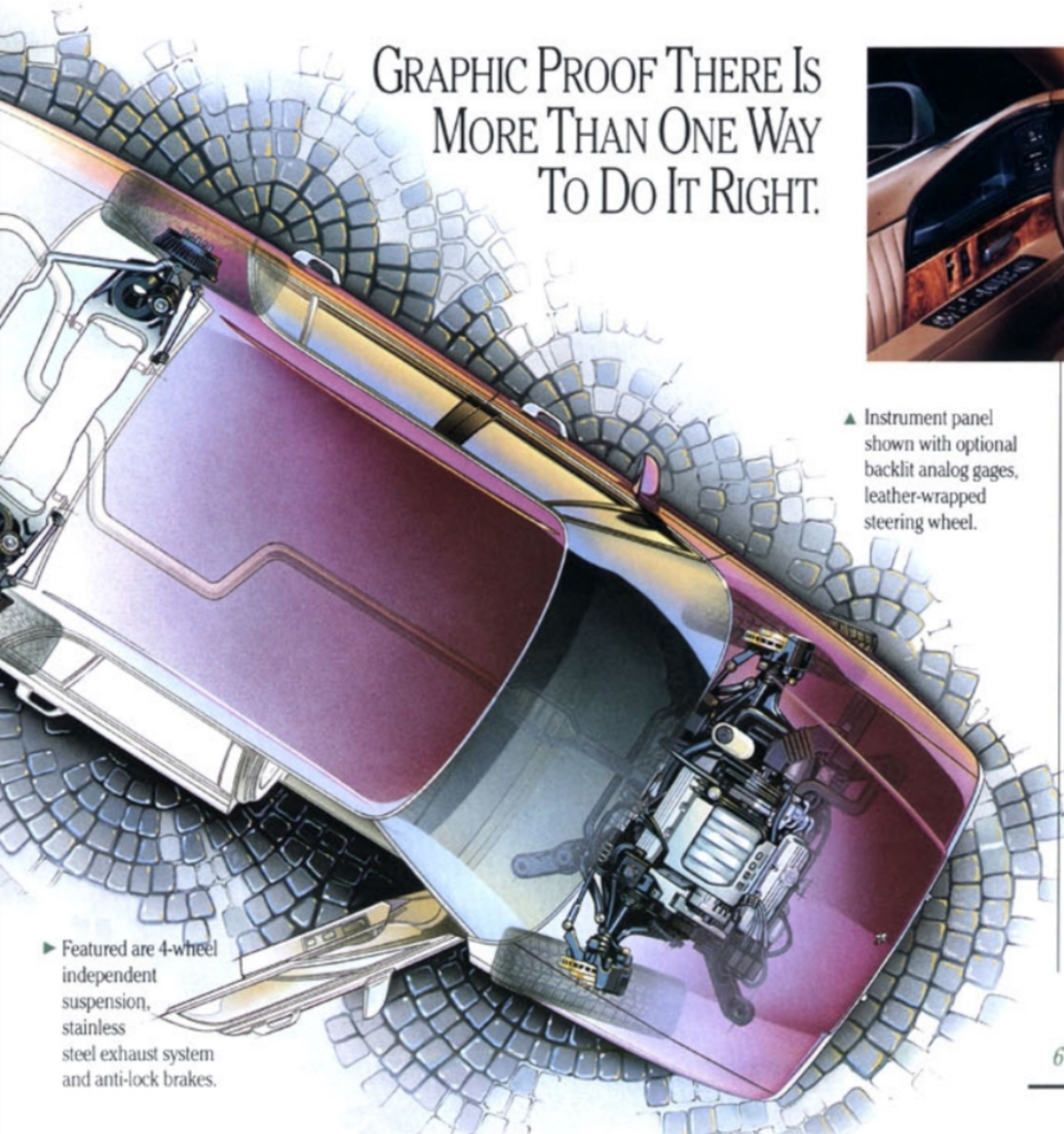


▲ Instrument panel shown with optional backlit analog gauges, leather-wrapped steering wheel.

Park Avenue Ultra and Park Avenue share some important fine points. Both, for instance, feature the electronically controlled 4-speed automatic transmission with overdrive, which offers precise shifting for a seamless flow of power. And both cars exhibit powerful reasons for ownership: Buick Quality. 

◀ The powerful 3800 V-6 with tuned-port injection, standard on Park Avenue.

▶ Park Avenue interior in the available Sierra grain Ultra Soft leather and doeskin vinyl.



▶ Featured are 4-wheel independent suspension, stainless steel exhaust system and anti-lock brakes.





RIVIERA

The sleekly styled 1992 Riviera accelerates confidently with a 3800 V-6 tuned-port-injected engine. An electronically controlled 4-speed automatic transmission with overdrive smoothly paves the way.

Enjoyable handling is courtesy of the 4-wheel independent suspension with DynaRide® —or available Gran Touring suspension. With either suspension, you have the luxury of automatic level control.

1992 Riviera: a beautiful reason to take the long way home.

RESPONSIVE.
REFINED. REMARKABLE.
RIVIERA.

The 1992 Buick Riviera is far more than a head-turner. Security features like the PASS-Key® theft-deterrent system and optional remote keyless entry increase your confidence



▲ Digital and analog instrumentation provides important information quickly and clearly.

► Foreground: Riviera with GT 15-inch wheels. Background: with available Landau roof.

level. So do the anti-lock braking system and driver-side air bag.

And you're surrounded by 2-sided rust-resistant steel panels that are galvanized inside and out with zinc.

1992 Riviera: a remarkable classic in the Buick Quality tradition. (SS)



▼ Sheer luxury inside the Riviera includes available Ultra Soft leather in seating areas.





REGAL SEDAN

The 1992 Buick Regal is everything the competition hoped it wouldn't be. In fact, at its introduction last year, *Car and Driver* magazine hailed it as "Low, sleek and athletic . . . one of the best behaved American cars, ever." A few reasons, besides Regal Sedan's outstanding looks, are its standard 3.1-litre V-6, air conditioning, 4-wheel independent suspension, and a complete listing of selected standard and optional equipment.

Regal: built to take on all competition.

► Regal Limited Sedan, shown.





▲ Inviting interior features rich cloth upholstery, plush carpeting, premium sound system and adjustable TILT-WHEEL™

▼ Optional steering wheel radio controls are just a fingertip away, and user-friendly instrumentation is a quick, easy read.



REGAL SEDAN

BUILDING A STYLISH PERFORMANCE SPORT SEDAN IS NOT FOREIGN TO US.

Comfort, value, style and performance are right at home in Regal Sedans. Gran Sport Sedan offers a 3800 V-6 with tuned-port injection, and Gran Touring suspension. Regal Limited and Custom Sedans feature DynaRide 4-wheel independent suspension to filter out road irregularities and handle curves gracefully. 1992 Buick Regal Sedans: proudly making an American statement of great import. Ⓢ

► Foreground: Regal Gran Sport Sedan with standard 16-inch aluminum wheels. Background: Regal Custom Sedan with optional 15-inch aluminum wheels.

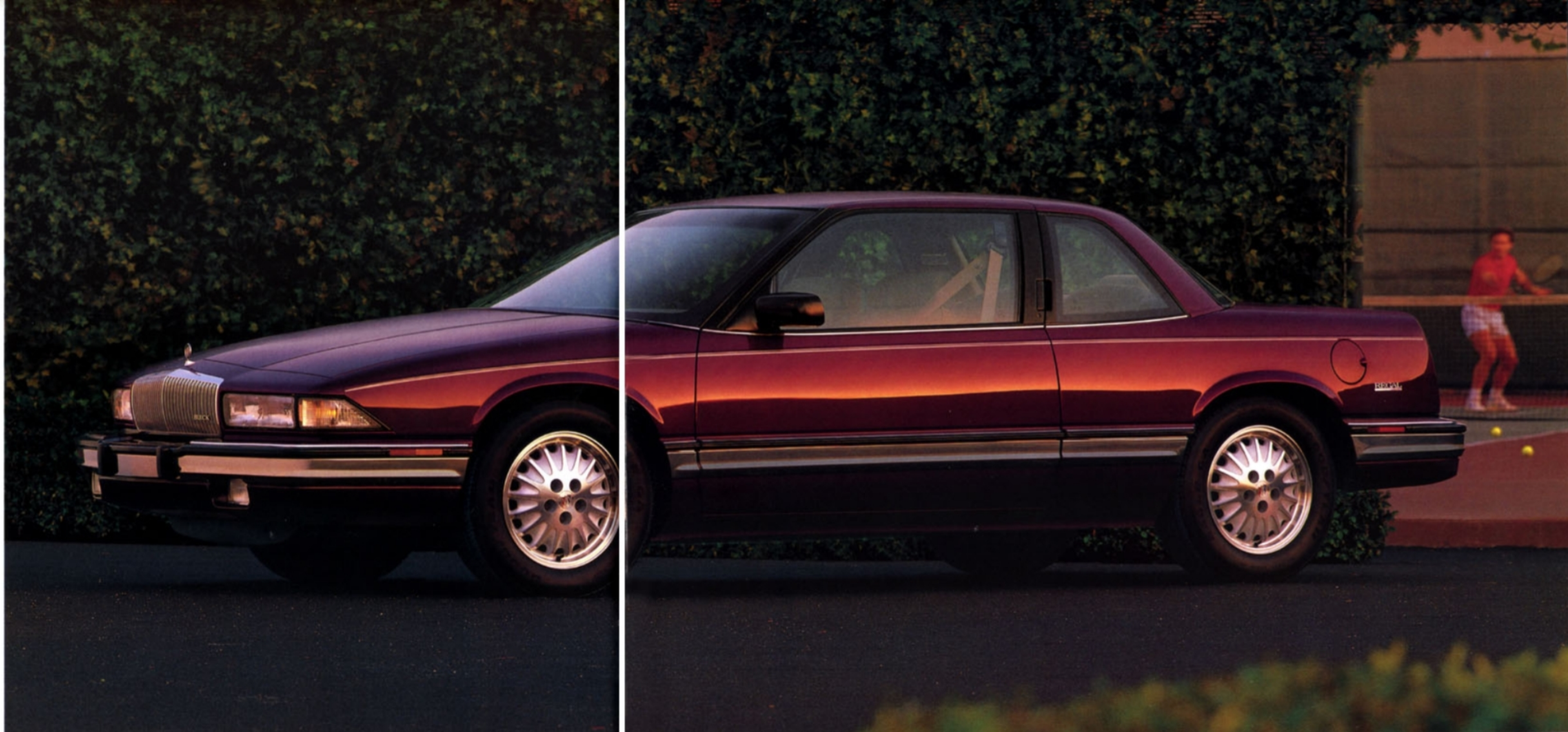




REGAL COUPE

Behind the distinctive Limited and Custom grille, a 140-horsepower 3.1-litre V-6 with multi-port fuel injection balances power and ease of operation, precisely. Regal's low 0.30 drag coefficient cleanly divides the wind. Underneath, 4-wheel independent DynaRide suspension (Custom and Limited) transports you smoothly while 4-wheel disc brakes help bring you to a confident halt. Whether you choose Custom, Limited or Gran Sport, you're in for a premium driving experience.

► Regal Limited Coupe, shown.



CHOICES, NOT COMPROMISES.

One choice is the Custom Coupe, shown below, with the lively 140 horsepower 3.1-litre V-6 with patented fast-burn combustion chambers. The moving parts are

highly polished to reduce friction, fit precisely and last. Electronic sensors accurately meter

fuel to fit your engine's specific needs.

The Buick Gran Sport (shown on the facing page with matching body-colored grille) features a special touring suspension, larger tires on 16-inch aluminum wheels and the 3800 V-6 with tuned-port injection, which offers 170 horsepower. With choices like these, you'll always be right. Ⓢ



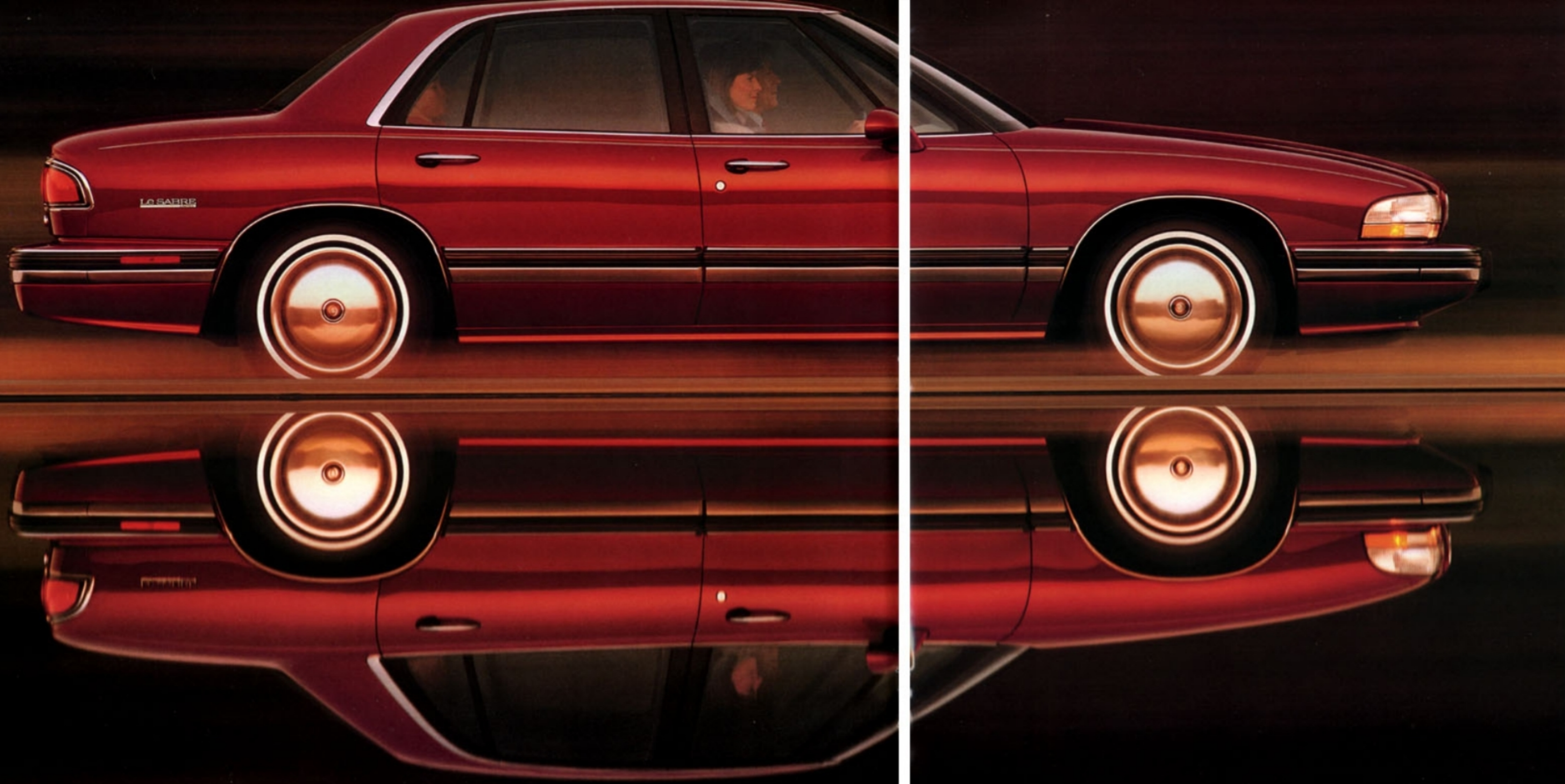
▲ Regal Limited Coupe in standard cloth.



▼ Regal Custom Coupe with available 15-inch aluminum wheels.

► Regal Gran Sport Coupe with 16-inch aluminum wheels, blackwall tires.





LESABRE

This all-new LeSabre, the most advanced ever, comes equipped with a sophisticated 170-horsepower 3800 V-6 engine with tuned-port injection, and an electronically controlled 4-speed automatic transmission. It features seamless precision due to a computerized shift control, and with DynaRide suspension, the miles flow by smoothly.


This full-size 6-passenger LeSabre reflects uncluttered styling, elegant accommodations and a full measure of Buick Quality throughout.

◀ LeSabre Limited Sedan, shown.



LE SABRE

TWO ATTRACTIVE REASONS FOR OWNING A LE SABRE: LIMITED AND CUSTOM.

There are dozens of reasons LeSabre has been Buick's best-selling full-size car. Safety is one. LeSabre features a brake/transmission interlock that prevents shifting out of Park unless the brake is applied, anti-lock brakes (optional on Custom), standard driver-side air bag, steel door beams and substantial front brake rotors. And, it's safe to say LeSabre is loaded, bumper to bumper, with Buick Quality. 

◀ Foreground: LeSabre Limited Sedan with optional aluminum wheels.
Background: LeSabre Custom Sedan with optional wire wheelcovers.



▲ LeSabre Limited Sedan interior, shown in Prima II cloth.

▼ The wraparound instrument panel features backlit analog gages (optional cluster shown).





SKYLARK

The expressively styled, all-new Skylark (limited availability until late fall, 1991) takes Buick to a new level of style and flair. Its departure from the ordinary serves to make your overall driving experience extraordinary. Skylark's styling divides the wind with a finely honed drag coefficient for minimal resistance. Power comes from engines that develop up to 160 horsepower.


The 1992 Skylark: bold styling backed up by Buick Quality and engineering.

► Skylark Gran Sport Coupe, shown.



SUBSTANCE, STYLE AND FUN ALL IN ONE.

The newly designed Skylark, and the aggressively styled Skylark Gran Sport are both available in coupe and sedan. A new Quad OHC 2.3-litre engine powers the Skylark Sedan. Gran Sport is powered by the 3300 V-6 with MFI (optional on Skylark).

There's an all-new Adjustable Ride Control system with three settings, standard on GS, optional on Skylark. Standard anti-lock brakes help minimize wheel lockup on virtually all road surfaces. Skylark: an all-new way to have fun in style. 

► Foreground: Skylark Sedan with optional 15-inch wheelcovers. Background: Skylark Gran Sport Sedan.



▲ Skylark Gran Sport Coupe and Sedan feature handsome cloth and leather in the seating areas.

▼ A full analog gage cluster includes ETR® AM-FM stereo with seek and scan, cassette and clock.





CENTURY

Buick's longtime 6-passenger favorite rolls on in solid comfort with the sure handling of DynaRide suspension. Power is readily supplied by a standard 110-horsepower, 2.5-litre fuel-injected engine — or the optional 3.3-litre 3300 V-6 with multi-port fuel injection.

Standard features like air conditioning, power steering, power brakes, automatic transmission, 4-speaker ETR® AM-FM stereo with seek and scan, and digital clock strengthen Century's reputation for value.

◀ Century Limited Sedan, shown.

BUICK. QUALITY BEHIND THE WHEEL.

Exceptionally well-crafted and generously appointed, Century is a smooth-rolling tribute to driver and passenger comfort. A selection of powerplants assures effortless cruising all day long, and the lengthy list of standard features is

joined by quality options like steering wheel radio controls and a CD player. Your time behind the wheel of a 1992 Century will be quality time, very well spent. Ⓢ



▲ Control, comfort and ease of use are the guiding principles behind the design of the Century instrument panel.

◀ Century Limited Sedan features rich cloth seating.

▶ Foreground: Century Limited Wagon with optional woodgrain vinyl. Background: Century Custom Coupe with optional 14-inch aluminum wheels.





ROADMASTER SEDAN

The all-new 1992 Roadmaster Sedan displays a new level of dignity and style.

The classic name in premium Buicks is an unmistakably full-frame, rear-wheel-drive road sedan that offers a powerful 180-horsepower, 5.7-litre fuel-injected V-8 engine. For many drivers it is still a favorite way to put a lot of power on the pavement.

Roadmaster Sedan: 215.8 inches of Buick style and stateliness is yours to command.






▲ Roadmaster's analog instrument panel quickly provides complete information.

▼ Roadmaster Limited interior, shown in available Ultra Soft leather in the seating areas.



EXTRA MEASURES OF BUICK QUALITY.

The new Roadmaster Sedans are measures of quality and convenience: a powerful engine up front, DynaRide suspension, roomy comfort in the middle, and a big 21 cubic feet of trunk space in the rear. Passengers get more than 115 cubic feet to move around in. Legroom equals 42.2 inches and headroom is a roomy 39.2 inches, in front. Measures of safety like the driver-side air bag and anti-lock braking system are standard. The 1992 Roadmaster Sedan is perhaps the best value in American luxury sedans today. 

► Foreground: Roadmaster Limited Sedan.
Background: Roadmaster with available Landau vinyl top.





ROADMASTER ESTATE WAGON

The concept was ambitious: to combine the versatility of a wagon with the comfort, safety and style of a fine luxury car.

The result is extraordinary. Here is an estate wagon that can carry many times the cargo of the average full-size sedan. Yet the richness of its 8-passenger cabin rivals that of any luxury car.


1992 Roadmaster: exciting new proof that big, spacious, comfortable American cars are still yours to enjoy.



IT MAY BE THE MOST LUXURIOUS WAGON IN THE WORLD.

Roadmaster's long list of standard features includes air conditioning, power windows with driver-side "express-down" feature, power steering, reclining split bench front seats and



rear-door security locks. The powerful 5.7-litre V-8 produces 180 horsepower at 4200 rpm. Roadmaster Estate Wagon: Now, discover what may be the most luxurious wagon in the world. 

▲ Available Sierra grain leather and doeskin vinyl seating is both handsome and practical.

BUICK BUYER'S GUIDE

When the first handmade Buick was fueled and fired to life almost a century ago, a deep respect for quality was given. Today, that respect for quality continues. You're looking at a catalog filled with Buick automobiles, any one of which will meet your needs in terms of quality, design and engineering.

Options are grouped in special packages for your ordering convenience. Grouping the most popular options helps your Buick dealer provide better value to you. Check with your Buick dealer for all the latest ordering information, and professional help in making your final decisions.

From personal preference of sound systems to suspension choices, from tire selections to color and trim levels, take your premium-quality Buick as far as you wish. Every inch of the car, every mile of your journey, will be Buick Quality.

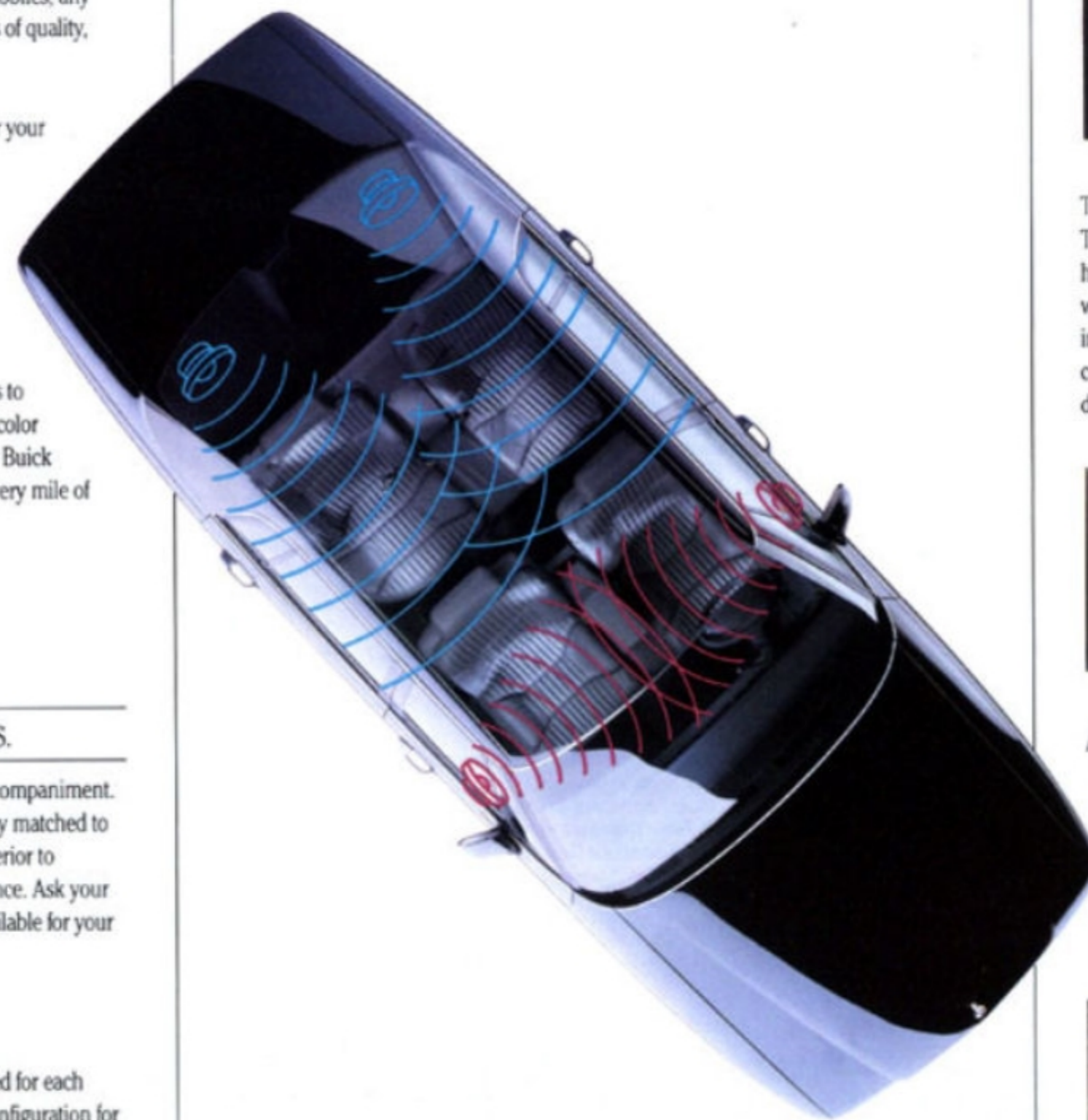
BUICK SOUND SYSTEMS.

Fill the hushed Buick interior with rich accompaniment. Buick premium sound systems are carefully matched to the acoustics and configuration of your interior to enhance the overall Buick driving experience. Ask your Buick dealer which sound systems are available for your particular Buick.

CONCERT SOUND II SPEAKER SYSTEM.

This 6-speaker system is custom engineered for each Buick model, and built into each model configuration for the best possible balance and sound reproduction. High-sensitivity single and double cones are combined with magnet-driven coaxial speakers for the ultimate in resonant clarity.

SOUND SYSTEMS



DELCO/BOSE GOLD SERIES MUSIC SYSTEM. Marvelous sound issues from cross-firing speakers in a "stereo everywhere" effect with this acoustically tailored, actively equalized music system. The equivalent of a 32-band custom equalizer is at work in Buick Park Avenue or Riviera to perfect the spectral and spatial equality and tonal balance.



THE AVAILABLE COMPACT DISC PLAYER.

The Delco CD Player is to the human ear what high-definition television is to the eye: crisp and clean, with a dynamic range from 20 to 20,000 Hz. Features include a track scanner, advancer, repeater, and compression, which brings loud and soft music into more desirable ranges.



AVAILABLE STEERING WHEEL CONTROLS.

This convenience feature places an easy-to-use horizontal line of radio controls right in the center of the wheel. Backlit rocker-type switches give you volume, on/off, AM-FM, seek up/down, preset program and tuning—all without removing your hands from the wheel.



WHAT IS BEHIND BUICK QUALITY? PLENTY OF POWER.

Look behind you; quality pulls a lot of weight with Buick. Depending on the model you choose, the reservoir of smooth, uninterrupted power is deep enough to accommodate up to 5,000 lbs* of trailering. No wonder Buicks have acquired such a satisfied following.

SKYLARK

Capacity: 1,000 lbs*

All Skylarks can easily handle lightweight-class trailer loads when properly equipped. You'll come to appreciate its muscle even more, when hauling a trailer.

CENTURY AND REGAL

Capacity: 2,000 lbs*

Muscular grace: The term becomes all the more descriptive when hitched to the trailering capacities of Century and Regal. Either of these Buicks will pull 1,000 to 2,000 lbs, depending on how they are equipped.



BUYER'S GUIDE

TRAILER TOWING

1992 Buick Trailer Towing Requirements

	Engine	Final Drive Ratio	Maximum Gross Trailer Weight (lbs)*	HD Engine and Transmission Cooling	Automatic Level Control or Air-Lift Shocks
Skylark	3.3L (LG7) ⁽¹⁾	2.39	1,000 ⁽²⁾⁽³⁾		
Century	2.5L (LR8)**	2.84	1,000		
	3.3L (LG7)	2.73	2,000 ⁽³⁾		
Regal	3.1L (LHO)	3.33	1,000 ⁽³⁾		
	3.8L (L27)	3.06	2,000 ⁽³⁾		
LeSabre	3.8L (L27)	2.84 ⁽⁴⁾ 3.06 ⁽⁴⁾	1,000 3,000 ⁽⁵⁾	— Required ⁽⁴⁾	— Required
Park Avenue	3.8L (L27)	2.84 ⁽⁴⁾ 3.06 ⁽⁴⁾	1,000 3,000 ⁽⁵⁾	— Required ⁽⁴⁾	Standard Standard
Park Avenue Ultra	3.8L (L67)	2.97	1,000 2,000 ⁽⁵⁾	— Required ⁽⁴⁾	Standard Standard
Roadmaster Sedan	5.7L (LO5)	3.08 ⁽⁴⁾	5,000 ⁽⁵⁾	Recommended ⁽⁴⁾	Recommended ⁽⁴⁾
Roadmaster Estate Wagon	5.7L (LO5)	3.23 ⁽⁴⁾	5,000 ⁽⁵⁾	Recommended ⁽⁴⁾	Recommended ⁽⁴⁾

*Trailer tongue load should be 10% of the maximum trailer weight but should not exceed the load rating specified for that vehicle, engine or hitch combination.

**Not recommended on Century Wagon.

(1) Not recommended for trailer towing on long grades in unusually high temperatures.
(2) Requires Class II frame-mounted trailer hitch.
(3) Trailer towing in mountainous, high-temperature areas requires the installation of the Dunham-Bush Auxiliary Cooler (dealer installed).
(4) Included in required V92 Trailer Towing Package.
(5) Requires Class III frame-mounted trailer hitch.
Note: Riviera model not recommended for trailer towing.

PARK AVENUE AND LeSABRE

Capacity: 3,000 lbs* (2,000 lbs* on Ultra)
How do these 6-passenger sedans haul? Luxuriously, with ease and a great deal of comfort. Standard 3800 V-6 power and automatic load-leveling (optional on LeSabre) coupled with a seamless transmission make a big load seem lighter.

ROADMASTER

Capacity: 5,000 lbs*
This is trailering that takes a load off your mind: You're hauling 5,000 lbs with a 700-lb tongue weight, and instead of wrestling with the load, you're enjoying the smooth flow of the countryside passing by.

HEAVY-DUTY COOLING AND COMPONENTS

Trailering, especially in hot climates, calls for a heavy-duty cooling system, which includes a radiator with higher cooling capacity for both engine and transmission coolants. Available on Park Avenue and LeSabre, the trailer towing option features powertrain cooling plus suspension and performance enhancements that handle loads up to 3,000 lbs (2,000 lbs on Ultra). Oil coolers are provided, plus heavier-duty suspension for improved highway stability and greater driver comfort.

Increased acceleration demands are met through a high-performance axle ratio. A heavy-duty battery is included to take care of trailer lighting requirements. Roadmaster Estate Wagon and Sedan, when so equipped, can tow 5,000 lbs.

***When properly equipped. Includes weight of trailer, cargo, passengers and equipment.**

All towing recommendations are subject to change. Check with your Buick dealer for the latest information.

PARK AVENUE

MODEL AVAILABILITY

- ▶ Park Avenue Sedan
- ▶ Park Avenue Ultra Sedan

POWERTRAIN/SUSPENSION*

- ▶ 3.8-litre 3800 V-6 with tuned-port injection (Park Avenue)
- ▶ Supercharged 3800 V-6 engine (Ultra)
- ▶ Anti-lock brakes
- ▶ Automatic transmission with overdrive (electronically controlled)
- ▶ DynaRide 4-wheel independent suspension with automatic level control
- ▶ Power front disc/rear drum brakes
- ▶ Power rack-and-pinion variable-effort steering
- ▶ Air conditioning (Park Avenue)
- ▶ Air conditioning—dual automatic ComforTemp climate control with rear-seat ComforTemp heat and ventilation (Ultra)
- ▶ Console—overhead, including front-seat reading lights, garage door opener storage
- ▶ Cruise control—electronic
- ▶ Defogger—electric rear-window
- ▶ Door locks—power
- ▶ Mirror—lighted visor vanity, passenger (Park Avenue)
- ▶ Mirrors—lighted visor vanity, driver and front passenger, rear-seat passengers (Ultra)
- ▶ Radio—ETR® AM-FM stereo with seek and scan, cassette, 4-speaker system, clock
- ▶ Seat recliners—power, driver and passenger (Ultra)
- ▶ Seat—6-way power, driver (Park Avenue)
- ▶ Seats—6-way power, driver and passenger (Ultra)
- ▶ Seats—cloth 55/45 with storage armrest (Park Avenue)

STANDARD EQUIPMENT*

- ▶ Air bag—driver-side SIR (Supplemental Inflatable Restraint) system with knee bolster

RIVIERA

MODEL AVAILABILITY

- ▶ Riviera Coupe

POWERTRAIN/SUSPENSION*

- ▶ 3.8-litre 3800 V-6 engine with tuned-port injection
- ▶ Anti-lock brakes
- ▶ Automatic transmission with overdrive (electronically controlled)
- ▶ DynaRide suspension with automatic level control
- ▶ Power 4-wheel disc brakes
- ▶ Power steering

STANDARD EQUIPMENT*

- ▶ Air bag—driver-side SIR (Supplemental Inflatable Restraint) system
- ▶ Air conditioning—electronic touch climate control

BUYER'S GUIDE

- ▶ Seats—leather and vinyl 55/45 with front-seat storage armrest (Ultra)
- ▶ Security locks—rear-door
- ▶ Steering column—TILF-WHEEL™ adjustable
- ▶ Steering wheel—leather-wrapped (Ultra)
- ▶ Tail lamp lenses—specific, smoked (Ultra)
- ▶ Theft-deterrent system—PASS-Key®
- ▶ Tires—P205/70R15 steel-belted, radial-ply, all-season blackwall (Park Avenue)
- ▶ Tires—P215/70R15 steel-belted, radial-ply, all-season blackwall** (Ultra)
- ▶ Windows—power

SELECTED OPTIONAL EQUIPMENT*

- ▶ Compact disc player
- ▶ Gran Touring Package—Gran Touring suspension, 2.97 drive ratio, P215/60R16



- ▶ Eagle GA touring blackwall tires and 16-inch aluminum wheels (3.06 drive ratio and leather-wrapped steering wheel—Park Avenue)
- ▶ Illuminated driver door lock and interior light control (includes retained accessory power)
- ▶ Instrumentation—analog gage cluster with tachometer, coolant temperature, oil level and pressure, voltmeter, low-fuel and oil-life monitors (Park Avenue)
- ▶ Memory driver's seat and outside mirrors
- ▶ Reminder Package—coolant level, windshield washer fluid level, door ajar (Ultra)
- ▶ Remote keyless entry
- ▶ Traction control

*Partial listing only—see your Buick dealer for complete lists and details.

**Note: Use of tire chains with this tire may cause damage to your car.

SPECIFICATIONS

Engine Type (Ultra)	Supercharged 3.8-litre 3800 V-6
Horsepower	205 @ 4400 rpm
Torque	260 @ 2600 rpm
Type (Park Avenue)	3800 V-6 with tuned-port injection
Horsepower	170 @ 4800 rpm
Torque	220 @ 3200 rpm
Dimensions, inches	
Length	205.3
Width	73.6
Height	55.1
Wheelbase	110.7
Interior, front/rear	
Legroom	42.0/41.6
Headroom	38.8/37.8
Shoulder room	59.1/58.5
Hip room	55.1/54.2
Trunk, cu ft	20.3
Fuel tank, gal	18.0

SPECIFICATIONS

Engine Type	3.8-litre 3800 V-6 with tuned-port injection
Horsepower	170 @ 4800 rpm
Torque	220 @ 3200 rpm
Dimensions, inches	
Length	198.3
Width	73.1
Height	52.9
Wheelbase	108.0
Interior, front/rear	
Legroom	42.7/35.6
Headroom	37.8/37.8
Shoulder room	57.9/57.4
Hip room	55.9/55.4
Trunk, cu ft	14.4
Fuel tank, gal	18.8

- ▶ Safety belts—manual lap/shoulder for front and rear outboard passengers
- ▶ Seat—6-way power with floodlit controls, driver
- ▶ Speakers—6-speaker Concert Sound
- ▶ Steering column—TILF-WHEEL™ adjustable
- ▶ Theft-deterrent system—PASS-Key®
- ▶ Tires—P205/70R15 steel-belted, radial-ply, all-season whitewall
- ▶ Wipers—2-speed with low-speed delay

SELECTED OPTIONAL EQUIPMENT*

- ▶ Astroroof—electric sliding
 - ▶ Compact disc player—including Delco/Bose Gold Series Music System, ETR® AM stereo* FM stereo with seek and scan, cassette, clock
 - ▶ Gran Touring Package—Gran Touring suspension, 15-inch aluminum wheels, fast-ratio power steering and P215/65R15 Eagle GT+4 blackwall tires
 - ▶ Headlamp control—Twilight Sentinel
 - ▶ Mirror—automatic day/night
 - ▶ Remote keyless entry—operates both driver and passenger door and trunk
 - ▶ Seat—6-way power, passenger (including power recliner)
 - ▶ Seats—leather with vinyl trim
 - ▶ Theft-deterrent system—with starter-interrupt and audible and visual alarm
 - ▶ Vinyl top—padded Landau
 - ▶ Wheels—15-inch aluminum
- *Partial listing only—see your Buick dealer for complete lists and details.
*Receives C-Quam® AM stereo broadcasts. Most AM stations across the country broadcast in C-Quam but some do not. Check your local stations for compatibility in your area.



ROADMASTER ESTATE WAGON

MODEL AVAILABILITY

▶ Roadmaster Estate Wagon

POWERTRAIN/SUSPENSION*

- ▶ 5.7-litre V-8 with EFI
- ▶ Anti-lock brakes
- ▶ Automatic transmission with overdrive
- ▶ Heavy-duty suspension
- ▶ Power front disc/rear drum brakes
- ▶ Power steering

STANDARD EQUIPMENT*

- ▶ Air bag—driver-side SIR (Supplemental Inflatable Restraint) system
- ▶ Air conditioning
- ▶ Assist handles—third seat
- ▶ Battery—heavy-duty

- ▶ Carpeting—front, rear, load area
- ▶ Defogger—front and side window outlets
- ▶ Door lock releases—tailgate, tailgate latch, interior locks
- ▶ Door locks—power
- ▶ Exhaust system—stainless steel
- ▶ Glass—Soft-Ray tinted, flush-mounted
- ▶ Headliner—foam, cloth-covered
- ▶ Indicator—"tailgate ajar"
- ▶ Indicators—low windshield washer fluid, low oil, low coolant, low fuel
- ▶ Instrumentation—analog gage cluster including oil pressure, coolant temperature, volts, trip odometer, tachometer
- ▶ Lights—front-seat reading (integral with rearview mirror)
- ▶ Lights—rear roof rail with integrated reading
- ▶ Luggage rack—adjustable
- ▶ Net—convenience, dual function
- ▶ Radio—ETR® AM-FM stereo with seek and scan, clock
- ▶ Recliner—manual seatback, driver and passenger

BUYER'S GUIDE

- ▶ Seat—third, rear-facing, vinyl
- ▶ Seats—55/45 cloth with center armrest
- ▶ Security locks—rear-door
- ▶ Speakers—dual, standard-range front, extended-range rear
- ▶ Steering column—TILT-WHEEL™ adjustable
- ▶ Storage in doors and instrument panel tray
- ▶ Vista roof—with tinted glass
- ▶ Windows—power with driver "express-down"
- ▶ Wiper—rear-window with washer
- ▶ Wipers—2-speed with low-speed delay
- ▶ Woodgrain vinyl applique

SELECTED OPTIONAL EQUIPMENT*

- ▶ Air conditioning—electronic touch climate control
- ▶ Antenna—automatic power
- ▶ Armrest—front-seat storage
- ▶ Cornering lamps—front
- ▶ Cruise control—electronic
- ▶ Door locks—automatic
- ▶ Headlamp control—Twilight Sentinel
- ▶ Mirrors—lighted visor vanity, driver and passenger
- ▶ Radio—ETR® AM-FM stereo with seek and scan, cassette with auto reverse, clock
- ▶ Recliner—power, passenger
- ▶ Seats—6-way power, driver and passenger
- ▶ Seats—55/45 leather and vinyl with storage armrest
- ▶ Security cover—cargo area
- ▶ Trailer Towing Package—5,000-pound capacity
- ▶ Windshield—solar-control

*Partial listing only—see your Buick dealer for complete lists and details.



SPECIFICATIONS

Engine Type	5.7-litre V-8 with EFI ¹
Horsepower	180 @ 4200 rpm
Torque	290 @ 2400 rpm
Dimensions, inches	
Length	217.7
Width	79.9
Height	60.3
Wheelbase	115.9
Interior, front/rear	
Legroom	42.2/38.3
Headroom	39.6/39.4
Shoulder room	63.4/63.5
Hip room	56.9/57.1
Maximum cargo, cu ft	92.4
Fuel tank, gal	22.0

¹EFI—Electronic fuel injection

ROADMASTER SEDAN

MODEL AVAILABILITY

- ▶ Roadmaster Sedan
- ▶ Roadmaster Limited Sedan

POWERTRAIN/SUSPENSION*

- ▶ 5.7-litre V-8 with EFI
- ▶ Anti-lock brakes
- ▶ Automatic transmission with overdrive
- ▶ DynaRide suspension
- ▶ Power front disc/rear drum brakes
- ▶ Power steering (with variable effort on Limited)

STANDARD EQUIPMENT*

- ▶ Air bag—driver-side SIR (Supplemental Inflatable Restraint) system
- ▶ Air conditioning (Roadmaster)

- ▶ Air conditioning—electronic touch climate control (Limited)
- ▶ Armrest—rear-seat center
- ▶ Coach lamps (Limited)
- ▶ Cruise control—electronic
- ▶ Defogger—electric rear-window
- ▶ Defogger—front and side window outlets
- ▶ Door locks—automatic with automatic relock feature (Limited)
- ▶ Door locks—power (Roadmaster)
- ▶ Exhaust system—stainless steel
- ▶ Glass—Soft-Ray tinted, flush-mounted
- ▶ Instrumentation—analog gage cluster including oil pressure, coolant temperature, volts, trip odometer, tachometer
- ▶ Mirror—inside day/night with integral reading lights (Roadmaster)
- ▶ Mirror—inside day/night with integrated front-seat reading lights and compass (Limited)
- ▶ Mirrors—outside, left remote/right manual, deluxe body-color (Roadmaster)

- ▶ Mirrors—outside, left and right remote, heated (Limited)
- ▶ Radio—ETR® AM-FM stereo with seek and scan, clock (Roadmaster)
- ▶ Radio—ETR® AM-FM stereo with seek and scan, cassette, clock (Limited)
- ▶ Recliner—electric seatback, driver and passenger (Limited)
- ▶ Remote keyless entry—(Limited)
- ▶ Seats—6-way power, driver and passenger (Limited)
- ▶ Seats—55/45 cloth with storage armrest
- ▶ Security locks—rear-door
- ▶ Windows—power with driver "express-down"
- ▶ Wipers—2-speed with low-speed delay

SELECTED OPTIONAL EQUIPMENT*

- ▶ Air conditioning—electronic touch climate control (Roadmaster)
- ▶ Compact disc player—with ETR® AM stereo¹-FM stereo and premium speakers
- ▶ Leather-wrapped steering wheel (std. on Limited)
- ▶ Mirrors—outside left and right, heated (Roadmaster)
- ▶ Seats—55/45 leather and vinyl with storage armrest
- ▶ Tires—self-sealing
- ▶ Trailer Towing Package—5,000-pound capacity
- ▶ Windshield—solar-control

*Partial listing only—see your Buick dealer for complete lists and details.
¹Receives C-Quam® AM stereo broadcasts. Most AM stations across the country broadcast in C-Quam but some do not. Check your local stations for compatibility in your area.



SPECIFICATIONS

Engine Type	5.7-litre V-8 with EFI ¹
Horsepower	180 @ 4200 rpm
Torque	290 @ 2400 rpm
Dimensions, inches	
Length	215.8
Width	78.1
Height	55.9
Wheelbase	115.9
Interior, front/rear	
Legroom	42.2/38.5
Headroom	39.2/38.6
Shoulder room	63.3/63.3
Hip room	56.9/56.9
Trunk, cu ft	21.0
Fuel tank, gal	23.0

¹EFI—Electronic fuel injection

OCCUPANT PROTECTION

- ▶ Automatic safety belt system for driver and right front passenger (Regal, Skylark, Century) or Supplemental Inflatable Restraint, driver only, with manual lap/shoulder safety belts for driver and right front passenger (Park Avenue, LeSabre, Riviera, Roadmaster), both including visual and audible warning system
- ▶ Manual lap/shoulder safety belts, outboard rear seat positions
- ▶ Manual lap safety belts, center front/rear seat positions, where applicable
- ▶ Energy-absorbing steering column
- ▶ Energy-absorbing instrument panel
- ▶ Energy-absorbing seatback tops, front
- ▶ Interlocking door latches
- ▶ Laminated windshield glass with urethane bonding
- ▶ Side-guard door beams

- ▶ Passenger-guard inside door lock handles
- ▶ Inertia-locking, folding front seatbacks, 2-door models
- ▶ Safety armrests
- ▶ Head restraints, driver and right front passenger (adjustable or integral); rear-seat head restraints (Park Avenue Ultra, Roadmaster Sedan, Skylark, Regal Four-Seater Package)
- ▶ Break-away inside rearview mirror
- ▶ Security door locks and door retention components
- ▶ Power door locks with automatic locking features (Roadmaster Limited Sedan, Skylark)
- ▶ Tempered safety glass, side and rear windows
- ▶ Front and rear crush zones
- ▶ Security locks, rear-door (Park Avenue, LeSabre, Roadmaster)
- ▶ Pressure-lock radiator cap
- ▶ Dual sun visors
- ▶ Self-aligning steering wheel (except Skylark, Century)

ACCIDENT AVOIDANCE

- ▶ Side marker lamps and reflectors
- ▶ Parking lamps that illuminate with headlamps
- ▶ Four-way hazard warning flashers
- ▶ Back-up lamps
- ▶ Center high-mounted stop lamp
- ▶ Directional signal control with lane change feature (turn signal lamp)
- ▶ Windshield defroster, washer and multi-speed wipers
- ▶ Inside manual day/night rearview mirror
- ▶ Outside left and right rearview mirrors
- ▶ Brake system with dual master cylinder and warning light
- ▶ Starter safety switch
- ▶ Dual-action hood latch
- ▶ Low-glare finish on inside windshield moldings, wiper arms and blades, metallic steering wheel surfaces

- ▶ Illuminated heater and defroster controls
- ▶ Illuminated windshield wiper and washer controls (if on instrument panel)
- ▶ Tires with built-in tread wear indicators
- ▶ Safety road wheel rims
- ▶ Pressure-relief fuel cap
- ▶ Anti-lock brakes (Park Avenue, LeSabre Limited, Regal Limited and Gran Sport, Riviera, Skylark, Roadmaster)
- ▶ Audible brake lining wear indicators, disc brakes
- ▶ Door warning light/reflectors (Riviera, Park Avenue, Roadmaster Limited Sedan, LeSabre, Regal, Century, Skylark)
- ▶ Brake/transmission shift interlock (Park Avenue, LeSabre, Roadmaster, Riviera, Skylark)

Important: A word about this catalog.

We have tried to make this catalog as comprehensive and factual as possible. We reserve the right, however, to make changes at any time, without notice, in prices, colors, materials, equipment, specifications, models and availability. Since some information may have been updated since the time of printing, please check with your Buick dealer for complete details.

A word about engines.

Buicks are equipped with engines produced by different operating units of GM, its subsidiaries or suppliers to GM worldwide.

A word about assembly of Buicks.

Buicks are assembled by different operating units of General Motors, its subsidiaries or suppliers to GM worldwide. Buicks incorporate thousands of components produced by different operating units of GM, its subsidiaries or suppliers to GM worldwide. We sometimes find it necessary to produce Buicks with different or differently sourced components than originally scheduled. All such components have been approved for use in Buicks and will provide the quality performance associated with the Buick name. Since some options may be unavailable when your vehicle is assembled, we suggest that you verify that your vehicle includes the equipment you ordered, or if there are changes, that they are acceptable to you.

A word about updated service information.

Buick regularly sends its dealers useful service bulletins about Buick products. Buick monitors product performance in the field. We then prepare bulletins for servicing our products better. Now you can get these bulletins, too. Ask your dealer. To get ordering information, call toll-free 1-800-551-4123.

A word about corrosion protection.

Buicks are designed and built to resist corrosion. All body sheet metal components are warranted against rust-through corrosion for 6 years/100,000 miles. Application of additional rust-inhibiting materials is not required under the corrosion coverage.

A word about warranty.

The GM 3-year/36,000-mile BUMPER TO BUMPER PLUS WARRANTY covers repairs for any new Buick, including labor and parts, to correct any defects in material or workmanship occurring during the warranty period. The complete vehicle (except tires, which are covered by their manufacturer) will be covered for 3 years or 36,000 miles, whichever comes first. Body sheet metal rust-through from corrosion is covered for 6 years or 100,000 miles, whichever comes first. See your Buick dealer for terms of this limited warranty. Supplemental Inflatable Restraint coverage is 3 years regardless of mileage.

The GM Protection Plan.

It offers service protection in addition to that provided by GM's new-vehicle limited warranty. Coverage is currently available only in the U.S.A. and Canada for the 1992 model year. See your Buick dealer for details.

SMARTLEASE™

Many Buick dealers offer you the opportunity to buy or lease a Buick. Ask about SMARTLEASE.™ It may be right for you.

Buick Roadside Assistance.

It provides owners of 1992 Buicks with access to minor repairs or towing for disabled vehicles. It is reached through a toll-free telephone number and operates 24 hours a day, 365 days a year. Just call 1-800-252-1112. See your Buick dealer for details.

©1991 General Motors Corporation. All rights reserved. Buick, Riviera, Park Avenue, Roadmaster, LeSabre, Regal, Century, Skylark and ® are registered trademarks of General Motors Corporation. Estate Wagon is a trademark of General Motors Corporation.

Printed on recyclable paper from a renewable resource.



Buckle up, America!



BUICK

The New Symbol For Quality
In America.