

Honda

08

Fit



***Here to Serve
Vroom-anity!***





Zig! Zag! Tear across the asphalt. Enjoy the rush of the impressively spunky 1.5-liter VTEC® engine. But could it be that the Fit is more than just a five-door speed demon? Yes! The inside of this sleek, stylish wonder is impossibly roomy. And the Fit's gymnast-worthy flexibility lets you make the most of every square inch. Traffic-dodging. Cargo-gulping. Fun-inducing. The Fit is go!



Media City
ANIMAL HOSPITAL

PET
ADOPTION
TODAY

Automotive Origami!

We trust that an ordinary, dutiful citizen like you will use the Fit's 2nd-row Magic Seat® in a responsible manner. To make lots of room for sensible, everyday items. What'll you use your Fit for? Will we be sorry we asked?



If you're a social animal, bring the whole zoo along. The Fit has room for five adults – and more than 21 cubic feet of space in the back. So all that human cargo can bring along plenty of their own cargo, too.



LONG MODE is just the ticket for bringing along ridiculously linear objects – up to 7'10". And there's still room for a rear-seat passenger thanks to the 60/40 split.



Lay the Magic Seat flat and start stuffing your Fit to the gills. You can load in a few big, bulky boxes or a mind-boggling number of tiny trinkets. In **UTILITY MODE**, the Fit is open to just about any kind of wacky suggestion. Way, way open.



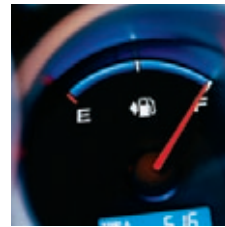
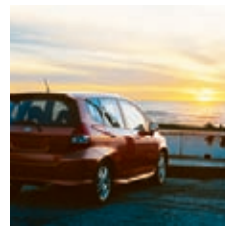
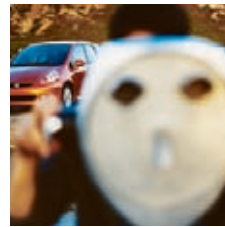
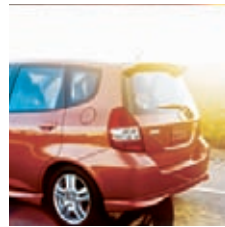
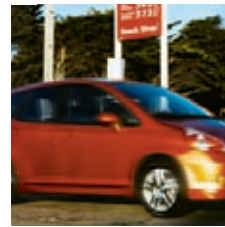
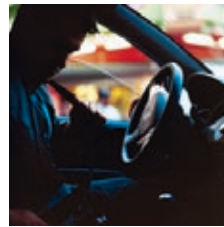
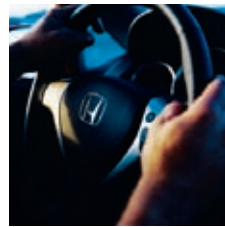
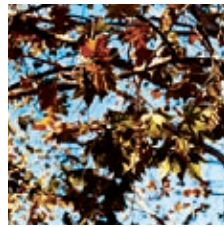
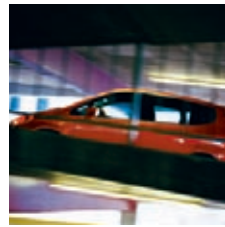
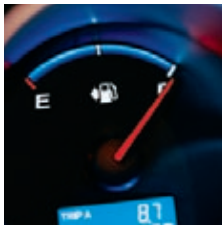
Flip up the Magic Seat and get your Fit into **TALL MODE** – giving you over 4 feet of space from floor to ceiling. Perfect for a bike, a small tree or yes, even an unusually large pet.*

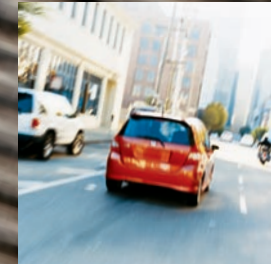
*Honda reminds you to properly secure items in the cargo area.











Strength Beyond Size!

The Fit is surprisingly responsive, thanks to its high power-to-weight ratio. The 109-hp, 1.5-liter engine has Honda's VTEC technology, which ups power and torque at any engine speed. The Fit also features a Drive-by-Wire™ throttle to control power delivery for quick and smooth acceleration.

The Fit's agility comes from its independent front and torsion-beam rear suspension. You get Electric Power Steering (EPS) for quick turns and front disc brakes for quick stops. The Fit Sport's 15-inch alloy wheels round out the package.



Hair-Trigger Response!



Even your fingers will have more fun, thanks to the Fit Sport's steering wheel-mounted, F1-inspired paddle shifters – featured with the available 5-speed automatic transmission. And there's also the quick-shifting 5-speed manual for all you clutch-it-yourself types.



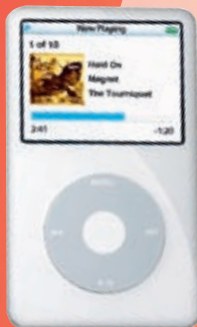


The Fit is a Honda, so it's built to serve you like the very important person you are: supportive seats, gauges in clear view and easy-to-use controls at the tips of your fingers. The air conditioning is standard, so you and your passengers always keep your cool.



Sure, the Fit is easy on the bank account, but we still managed lots of little luxuries. Like power windows, mirrors and door locks. Plenty of beverage holders are a no-brainer. And on the Sport model, cruise control will make shorter work of your longer trips.

Audio Invasion!



Why have that popular little piece of high-tech goodness if you can't take it with you in your new Fit? No worries with the available MP3/auxiliary input jack, which lets you play your iPod® through the Fit's sound system. Enjoy your whole music library on the go, wherever you go. You can even keep your iPod charging through the vehicle's 12-volt power outlet. So believe it or not, you may run out of road before you run out of tunes.



A fantastic voyage in your Fit only gets fantastic-er when you add the right soundtrack. Every Fit comes with a sound system that's loaded with great features, like a powerful 160-watt amplifier and a CD player. Step up to the Fit Sport model, and you get 200 watts, a CD player with text display that's both MP3- and Windows Media® Audio² (WMA)-compatible, a 5-mode equalizer and an auxiliary input jack to connect virtually any audio source.



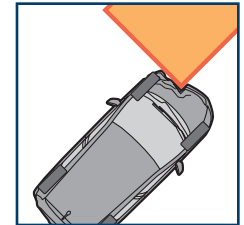
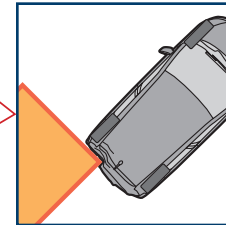
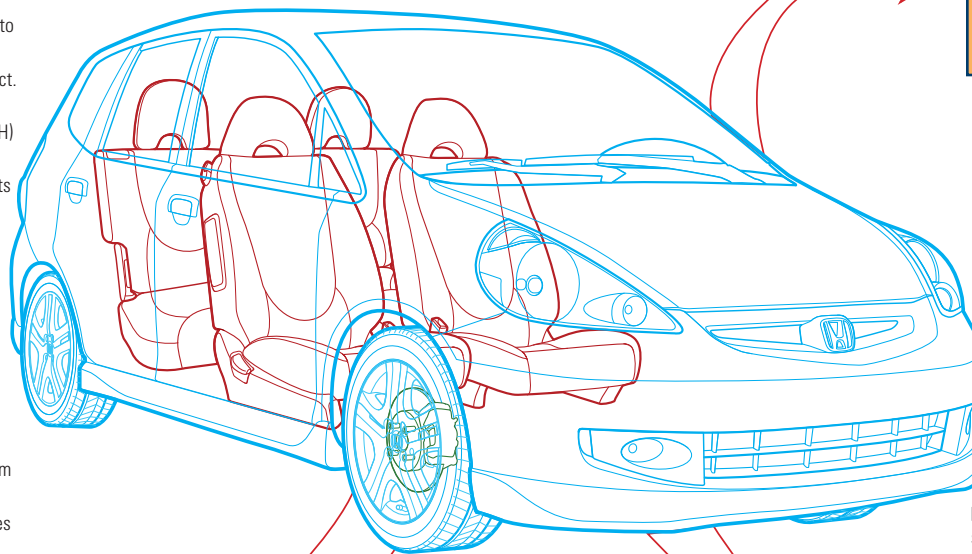


Prepare for Driveoff!

With the highest level of standard safety equipment of any car in its class, the Fit is another example of Honda's continued commitment to "Safety for Everyone." In fact, the Fit has recently earned a 5-star safety rating for frontal crash performance from the National Highway Traffic Safety Administration (NHTSA).†

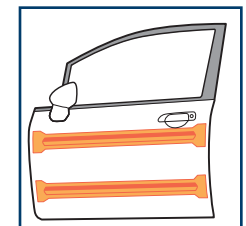
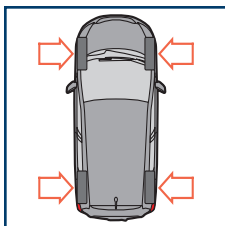
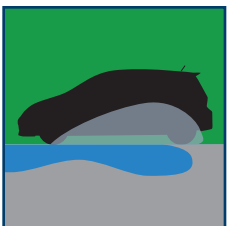


To accompany the protection afforded by an array of 6 airbags,* the Fit also features three-point seat belts at all 5 seating positions. The front seat belts' pretensioning system removes belt slack to help hold occupants firmly in a sufficient frontal impact. And the Lower Anchors and Tethers for Children (LATCH) system makes installing and using compatible child seats easy and convenient.

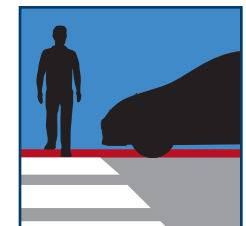


In some of the world's most sophisticated labs, Honda uses teams of crash-test dummies. The result is really smart engineering of the Fit's body. Its front and rear crush zones help to absorb and disperse impact energy in a collision.

We're so serious about safety, even the anti-lock braking system (ABS) is standard. It helps you maintain steering control during hard stops. Plus, Electronic Brake Distribution (EBD) balances braking forces at each wheel when the car's dynamically loaded.



The Fit is designed with a rigid safety cell to help protect you in an impact. And side-impact door beams help prevent intrusion of crash forces into the passenger space. While we focus on safety within the Fit, we also look at safety on the outside – the design of the Fit's front bumper, fenders, hood and windshield helps enhance pedestrian safety as well.



*Honda reminds you and your passengers to always buckle up. Children 12 and under are safest when properly restrained in the rear seat.

†Government star ratings are part of the National Highway Traffic Safety Administration's (NHTSA's) New Car Assessment Program (www.safercar.gov). Model tested with standard side-impact airbags (SABs).

7 Flavors of Fun!

Blaze Orange Metallic



Milano Red



Vivid Blue Pearl



It's a dizzying array, but try to focus. First, zero in on a Fit or Fit Sport model. Then just pick a color, and you're on your way.

Nighthawk Black Pearl



Blackberry Pearl
(available in fall '07)



Tidewater Blue Metallic



Storm Silver Metallic



Exterior Colors	Interior Colors	
	Fit	Fit Sport
Blackberry Pearl		black
Blaze Orange Metallic		black
Milano Red	black	black
Nighthawk Black Pearl	black	black
Storm Silver Metallic	black	black
Tidewater Blue Metallic	black	black
Vivid Blue Pearl	black	black

ENGINEERING

	FIT	FIT SPORT
Engine Type	In-Line 4-Cylinder	In-Line 4-Cylinder
Engine Block/Cylinder Head	Aluminum-Alloy	Aluminum-Alloy
Displacement (cc)	1497	1497
Horsepower @ rpm (SAE net)	109 @ 5800	109 @ 5800
Torque (lb.-ft. @ rpm)	105 @ 4800	105 @ 4800
Redline (rpm)	6500	6500
Bore and Stroke (mm)	73 x 89.4	73 x 89.4
Compression Ratio	10.4:1	10.4:1
Valve Train	16-Valve SOHC VTEC®	16-Valve SOHC VTEC
Multi-Point Fuel Injection	•	•
Drive-by-Wire™ Throttle System	•	•
Front-Wheel Drive	•	•
CARB Emissions Rating	LEV-2	LEV-2
Direct Ignition System with Immobilizer	•	•
100K +/- Miles No Scheduled Tune-Ups*	•	•

TRANSMISSIONS

5-Speed Manual Transmission	•	•
Gear Ratios: 1st: 3.462, 2nd: 1.870, 3rd: 1.321, 4th: 0.970, 5th: 0.757, Reverse: 3.231, Final Drive: 4.290	•	•
5-Speed Automatic Transmission (available)	•	•
Gear Ratios: 1st: 2.996, 2nd: 1.679, 3rd: 1.067, 4th: 0.756, 5th: 0.550, Reverse: 1.957, Final Drive: 4.560	•	•

BODY/SUSPENSION/CHASSIS

Unit-Body Construction	•	•
MacPherson Strut Front Suspension	•	•
Torsion-Beam Rear Suspension	•	•
Stabilizer Bar (mm, front)	21.0	21.0
Electric Power-Assisted Rack-and-Pinion Steering (EPS)	•	•
Steering Wheel Turns, Lock-to-Lock	2.41	2.41
Steering Ratio	12.8	12.8
Turning Diameter, Curb-to-Curb (ft.)	34.3	34.4
Power-Assisted Ventilated Front Disc/Rear Drum Brakes (in., front/rear)	10.3/7.9	10.3/7.9
Wheels	14" with Full Covers	15" Alloy
All-Season Tires	P175/65 R14 81S	P195/55 R15 84H
Compact Spare Tire	•	•

INTERIOR MEASUREMENTS

Headroom (in., front/rear)	40.6/38.6	40.6/38.6
Legroom (in., front/rear)	41.9/33.7	41.9/33.7
Shoulder Room (in., front/rear)	52.8/50.6	52.8/50.6
Hiproom (in., front/rear)	51.2/51.0	51.2/51.0
Cargo Volume (cu. ft., seat up/down)	21.3/41.9	21.3/41.9
Passenger Volume (cu. ft.)	90.0	90.0
Seating Capacity	5	5

SAFETY

	FIT	FIT SPORT
3-Point Seat Belts at All Seating Positions	•	•
Front 3-Point Seat Belts with Automatic Tensioning System	•	•
Adjustable Front Seat Belt Anchors	•	•
Dual-Stage, Dual-Threshold Front Airbags (SRS)	•	•
Front Side Airbags with Passenger-Side Occupant Position Detection System (OPDS)	•	•
Side Curtain Airbags	•	•
Anti-Lock Braking System (ABS)	•	•
Electronic Brake Distribution (EBD)	•	•
Side-Impact Door Beams	•	•
Outboard Lower Anchors and Tethers for Children (LATCH)	•	•
Child-Proof Rear Door Locks	•	•
Immobilizer Theft-Deterrent System	•	•

EXTERIOR MEASUREMENTS

Wheelbase (in.)	96.5	96.5
Length (in.)	157.4	157.4
Height (in.)	60.0	60.0
Width (in.)	66.2	66.2
Track (in., front/rear)	57.3/57.1	57.3/57.1
Curb Weight (lbs., MT/AT)	2432/2514	2471/2551
Weight Distribution (% front/rear, MT)	62/38	62/38
Weight Distribution (% front/rear, AT)	63/37	63/37

EPA MILEAGE ESTIMATES/FUEL CAPACITY

5-Speed Manual (City/Highway)	28/34	28/34
5-Speed Automatic (City/Highway)	27/34	27/33
Crankcase (qt.)	4.4	4.4
Coolant System (qt., MT/AT)	5.7/5.6	5.7/5.6
Fuel (gal.)	10.8	10.8
Required Fuel	Regular Unleaded	Regular Unleaded

EXTERIOR FEATURES

Roof-Mounted Antenna	•	•
Security System with Remote Entry	•	•
Body-Colored Folding Power Side Mirrors	•	•
2-Speed/Intermittent Windshield Wipers	•	•
Rear Window Wiper/Washer	•	•
Impact-Absorbing Body-Colored Bumpers	•	•
Fog Lights	•	•
Multi-Reflector Halogen Headlights with Body-Colored Bezels	•	•
Body-Colored Underbody Kit	•	•
Body-Colored Rear Roofline Spoiler	•	•
Tinted Glass	•	•
Body-Colored Door Handles	•	•

*Does not apply to fluid and filter changes. Exact mileage is determined by actual driving conditions. Please see your owner's manual for more details.

COMFORT & CONVENIENCE

	FIT	FIT SPORT
Air Conditioning with Air-Filtration System	•	•
Power Windows with Auto-Down Driver's Window	•	•
Power Door Locks	•	•
Cruise Control w/Illuminated Steering Wheel-Mounted Controls	•	•
Perforated Leather-Wrapped Steering Wheel	•	•
Steering Wheel-Mounted Paddle Shifters		5AT only
Adjustable Steering Column	•	•
Beverage Holders, Front (2) and Rear (3)	•	•
Door-Pocket Storage Bins, Front	•	•
Passenger-Side Seatback Pocket	•	•
Headlights-On Reminder	•	•
Driver's Vanity Mirror	•	•
12-Volt Power Outlet	•	•
Cargo Area Tie-Down Anchors (4 total)	•	•
Cargo Area Storage Pocket	•	•
Rear Window Defroster	•	•
Cargo Area Light	•	•

SEATING

Reclining Front Seatbacks	•	•
Adjustable Head Restraints	•	•
Fold-Flat-Capable Seating	•	•
60/40 Split 2nd-Row Magic Seat®	•	•

AUDIO SYSTEMS

160-Watt AM/FM/CD Audio System with 4 Speakers	•	
200-Watt AM/FM/CD Audio System with 6 Speakers		•
5-Mode Equalizer		•
MP3/Windows Media® Audio (WMA) Playback Capability		•
MP3/Auxiliary Input Jack		•
CD Text Display Capability		•
Speed-Sensitive Volume Control (SVC)	•	•

INSTRUMENTATION

Maintenance Minder™ System	•	•
Blue Backlit Gauges	•	•
Tachometer	•	•
Sport-Mode Gear Indicator		5AT only
Digital Odometer and Dual Digital Trip Meters	•	•
Door-Open Indicator	•	•
Low-Fuel and Low-Oil Pressure Indicators	•	•
Front Side Airbag-Off Indicator	•	•
Front Passenger Airbag-Off Indicator	•	•



Twenty-five years ago Honda began assembling cars in the United States. Today, almost 4 out of 5 Hondas sold in the U.S. are assembled in North America. Many are developed here, too. And every Honda is a smart value thanks to timeless design, great reliability and extended maintenance intervals. Check out our Best Resale Value awards³ from *Kelley Blue Book's* kbb.com, Best Overall Value awards from IntelliChoice^{®4} and—for the 4th year in a row—Industry Brand Residual Value Award from *Automotive Lease Guide*.⁵

Your dealer's team of trained technicians is at the ready to help keep your Honda in superb shape. All 2008 Honda vehicles—and any Honda Genuine Accessories installed at the time of purchase—are covered by the 3-year/36,000-mile New-Vehicle Limited Warranty.⁶ Plus, Honda cars and trucks are covered by a 5-year/60,000-mile Limited Powertrain Warranty,⁶ too. For more information or assistance, see your Honda dealer or please give us a call at 1-800-33-Honda.

Honda Care™ is a highly affordable, comprehensive vehicle and travel protection plan backed by Honda reliability, service and parts. Please see your dealer for all the details.

Whether you buy or lease a Honda vehicle, Honda Financial Services can assist you with the process. Please ask your dealer which lease or purchase plan best suits your needs.

Looking for a way to express your individuality? Then ask your dealer about Honda Genuine Accessories.



They've been designed, engineered and tested to meet the same exacting standards as your new vehicle. They're a high-quality way to make your Honda an expression of your one-of-a-kind personality.

¹ Based on 2008 EPA mileage estimates, reflecting new EPA fuel economy methods beginning with 2008 models. Use for comparison purposes only. Do not compare to models before 2008. Your actual mileage will vary depending on how you drive and maintain your vehicle. EPA mileage estimates: 5-Speed MT Fit and Fit Sport, 28 city/34 hwy.; 5-Speed AT Fit, 27 city/34 hwy.; 5-Speed AT Fit Sport, 27 city/33 hwy. ² Windows Media® is a trademark or registered trademark of Microsoft Corporation in the United States and/or other countries. ³ Kelley Blue Book's kbb.com 2007 Best Resale Value Award: Brand. ⁴ Based on 2007 model-year study. IntelliChoice® Inc., www.intellichoice.com. ⁵ Automotive Lease Guide, 2007 Industry Brand Residual Value Award. ⁶ 3-Year/36,000-Mile Limited Warranty. 5-Year/60,000-Mile Limited Powertrain Warranty. Ordinary maintenance or adjustments, parts subject to normal wear and replacement, and certain items are excluded. See your Honda dealer for terms and conditions of the limited warranties. **Always use seat belts and appropriate child seats. Children 12 and under are safest when properly restrained in the rear seat.** Specifications, features, illustrations and equipment shown in this brochure are based upon the latest available information at the time of printing. Although descriptions are believed to be correct, accuracy cannot be guaranteed. American Honda Motor Co., Inc., reserves the right to make changes at any time, without notice or obligation, in colors, specifications, accessories, materials and models. Some features mentioned herein are not available in all areas. See your Honda dealer for details. Some vehicles may be shown with optional equipment. Available = Optional. All images contained herein are either owned by American Honda Motor Co., Inc., or used under a valid license. It is a violation of federal law to reproduce these images without express written permission from American Honda Motor Co., Inc., or the individual copyright owner of such images. Honda Financial Services is a DBA of American Honda Finance Corporation. Honda, the H-mark symbol, Honda Care, Drive-by-Wire, Magic Seat and VTEC are trademarks of Honda Motor Co., Ltd. © 2007 American Honda Motor Co., Inc.

Super Shape Shifter!

If you don't mind a little added attention, your Honda dealer has three words for you: Honda Genuine Accessories. You can spiff up your Fit inside and out, with great stuff like the 16-inch alloy wheels and sport grille shown above. If you need more inspiration, check out the Spoon Sport Fit, proof of how the Fit has become a tuner favorite around the world.

The custom vehicle shown uses non-Honda genuine parts that may affect manufacturer's warranties or vehicle performance.



The Fit is Go!



HONDA

honda.com