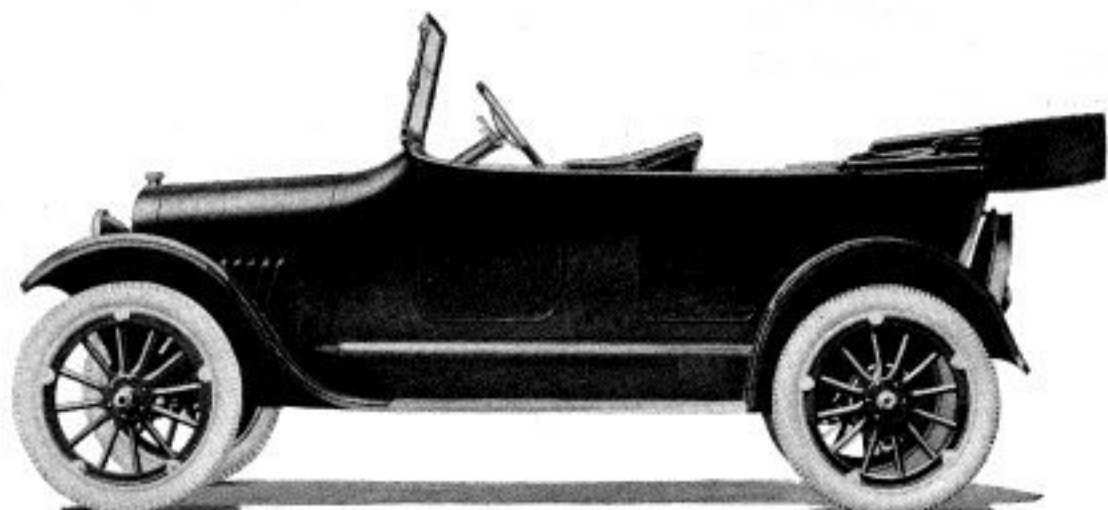


**CHEVROLET
MOTOR
COMPANY**

224 W. 57th STREET
NEW YORK CITY

Price	\$820
"Four-Ninety" Roadster	795
"Four-Ninety" Coupe	1325
"Four-Ninety" Sedan	1375
"Four-Ninety" Light Delivery Wagon, 1 seat	820
"Four-Ninety" Light Delivery Wagon, 3 seats	855



CHEVROLET "FOUR-NINETY" TOURING

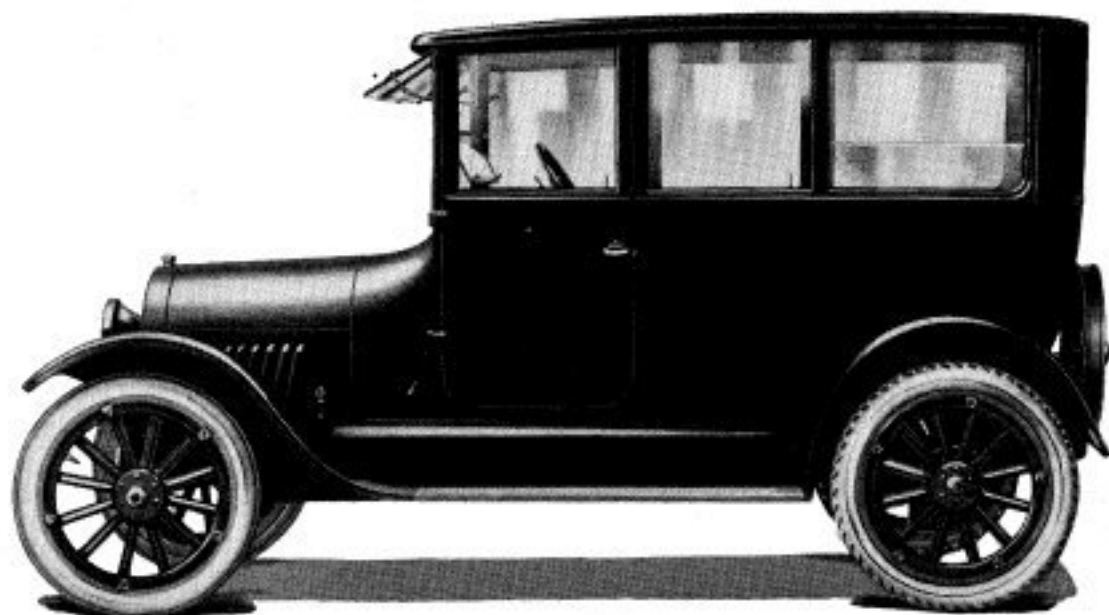
COLOR	Black	LUBRICATION	Splash with pressure pump
SEATING CAPACITY	Five	RADIATOR	Cellular
POSITION OF DRIVER	Left side	COOLING	Water pump and fan
WHEELBASE	102 inches	IGNITION	Storage battery and generator
GAUGE	56 inches	STARTING SYSTEM	Electric
WHEELS	Wood	STARTER OPERATED	Gear to fly wheel
FRONT TIRES	30 x 3½ inches, anti-skid	LIGHTING SYSTEM	Electric
REAR TIRES	30 x 3½ inches, anti-skid	VOLTAGE	Six to eight
SERVICE BRAKE	Contracting on rear wheels	WIRING SYSTEM	Lighting, single; starting, double
EMERGENCY BRAKE	Expanding on rear wheels	GASOLINE SYSTEM	Gravity
CYLINDERS	Four	CLUTCH	Cone
HOW ARRANGED	Vertically	TRANSMISSION	Selective sliding
HOW CAST	En bloc	GEAR CHANGES	Three forward, one reverse
HORSEPOWER	21.75 (N.A.C.C. Rating)	DRIVE	Bevel gear
BORE AND STROKE	3¼ x 4 inches	REAR AXLE	Three-quarters floating
		STEERING GEAR	Spur and gear

In addition to above specifications, price includes windshield, speedometer, ammeter, electric horn, complete lamp equipment, demountable rims, extra rim and tire carrier, license holders, complete tool equipment, including pump and jack, foot rest, robe rail, and side curtains.

**CHEVROLET
MOTOR
COMPANY**

224 W. 57th STREET
NEW YORK CITY

Price	\$1375
"Four-Ninety" Coupe	1325
"Four-Ninety" Touring	820
"Four-Ninety" Roadster	795
"Four-Ninety" Light Delivery Wagon, 1 seat	820
"Four-Ninety" Light Delivery Wagon, 3 seats	855



CHEVROLET "FOUR-NINETY" SEDAN

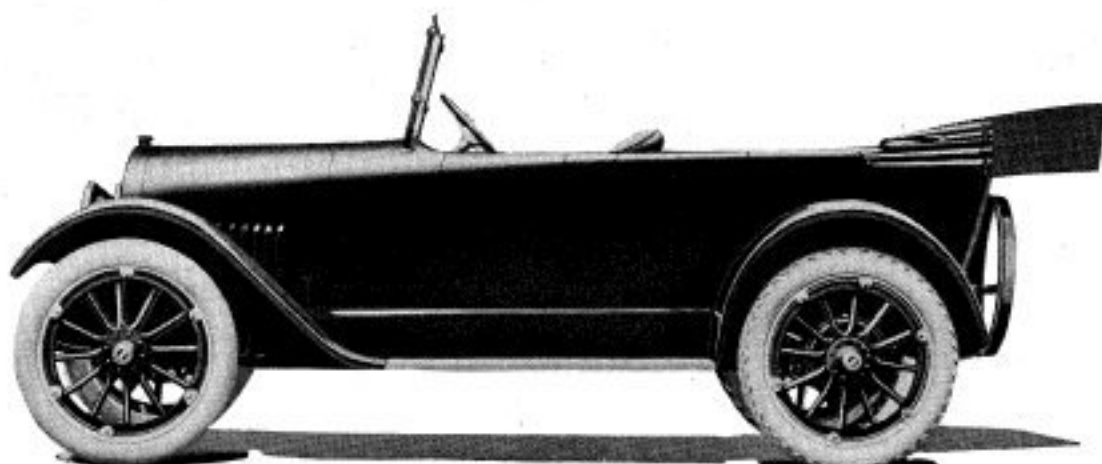
COLOR	Black	LUBRICATION	Splash with pressure pump
SEATING CAPACITY	Five	RADIATOR	Cellular
POSITION OF DRIVER	Left side	COOLING	Water pump and fan
WHEELBASE	102 inches	IGNITION	Storage battery and generator
GAUGE	56 inches	STARTING SYSTEM	Electric
WHEELS	Wood	STARTER OPERATED	Gear to fly wheel
FRONT TIRES	31 x 4 inches, ribbed tread	LIGHTING SYSTEM	Electric
REAR TIRES	31 x 4 inches, anti-skid	VOLTAGE	Six to eight
SERVICE BRAKE	Contracting on rear wheels	WIRING SYSTEM	Lighting, single; starting, double
EMERGENCY BRAKE	Expanding on rear wheels	GASOLINE SYSTEM	Vacuum
CYLINDERS	Four	CLUTCH	Cone
HOW ARRANGED	Vertically	TRANSMISSION	Selective sliding
HOW CAST	En bloc	GEAR CHANGES	Three forward, one reverse
HORSEPOWER	21.75 (N.A.C.C. Rating)	DRIVE	Bevel gear
BORE AND STROKE	3 $\frac{1}{8}$ x 4 inches	REAR AXLE	Three-quarters floating
		STEERING GEAR	Spur and gear

In addition to above specifications, price includes windshield, speedometer, ammeter, electric horn, complete lamp equipment, including dome light and headlight dimmers, demountable rims, extra rim and tire carrier, license holders, complete tool equipment including pump and jack.

**CHEVROLET
MOTOR
COMPANY**

224 W. 57th STREET
NEW YORK CITY

Price	\$1345
"FB-20" Roadster	1320
"FB-30" Coupe	2075
"FB-40" Sedan	2075



CHEVROLET "FB 50" TOURING

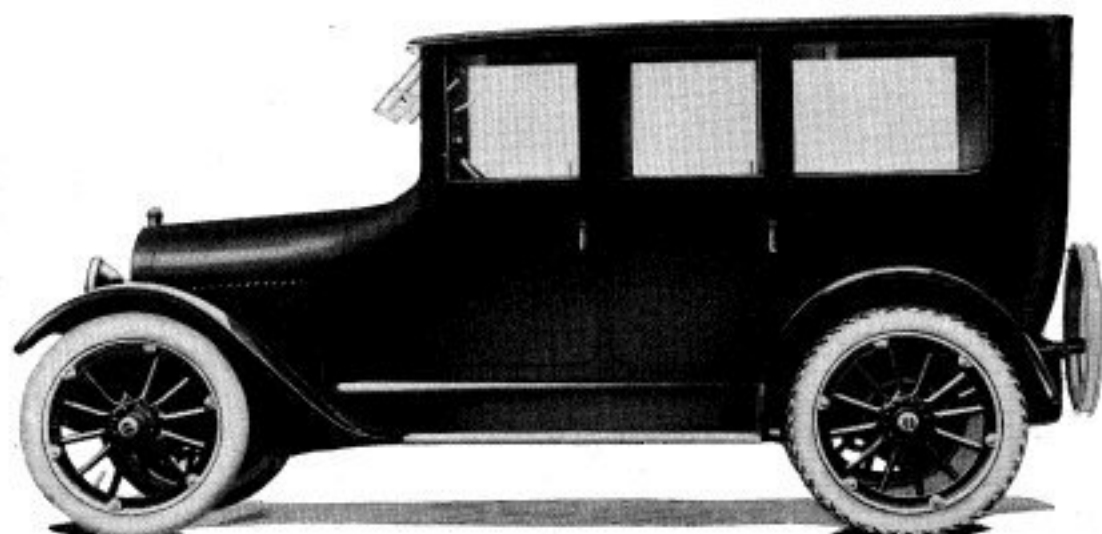
COLOR	Body, dark green; running gear, black	LUBRICATION	Splash with pressure pump
SEATING CAPACITY	Five	RADIATOR	Cellular
POSITION OF DRIVER	Left side	COOLING	Water pump and fan
WHEELBASE	110 inches	IGNITION	Storage battery and generator
GAUGE	56 inches	STARTING SYSTEM	Electric
WHEELS	Wood	STARTER OPERATED	Gear to fly wheel
FRONT TIRES	33 x 4 inches	LIGHTING SYSTEM	Electric
REAR TIRES	33 x 4 inches, anti-skid	VOLTAGE	Six to eight
SERVICE BRAKE	Contracting on rear wheels	WIRING SYSTEM	Lighting, single; starting, double
EMERGENCY BRAKE	Expanding on rear wheels	GASOLINE SYSTEM	Vacuum
CYLINDERS	Four	CLUTCH	Cone
HOW ARRANGED	Vertically	TRANSMISSION	Selective sliding
HOW CAST	En bloc	GEAR CHANGES	Three forward, one reverse
HORSEPOWER	21.75 (N.A.C.C. Rating)	DRIVE	Spiral bevel
BORE AND STROKE	3 $\frac{11}{16}$ x 5 $\frac{1}{4}$ inches	REAR AXLE	Three-quarters floating
		STEERING GEAR	Worm and gear

In addition to above specifications, price includes windshield, speedometer, ammeter, electric horn, complete lamp equipment, including headlight dimmers, side curtains, demountable rims, extra rim and tire carrier, license holders, complete tool equipment, including pump and jack.

**CHEVROLET
MOTOR
COMPANY**

224 W. 57th STREET
NEW YORK CITY

Price	\$2075
"FB-30" Coupe	2075
"FB-50" Touring Car	1345
"FB-20" Roadster	1320



CHEVROLET "FB 40" SEDAN

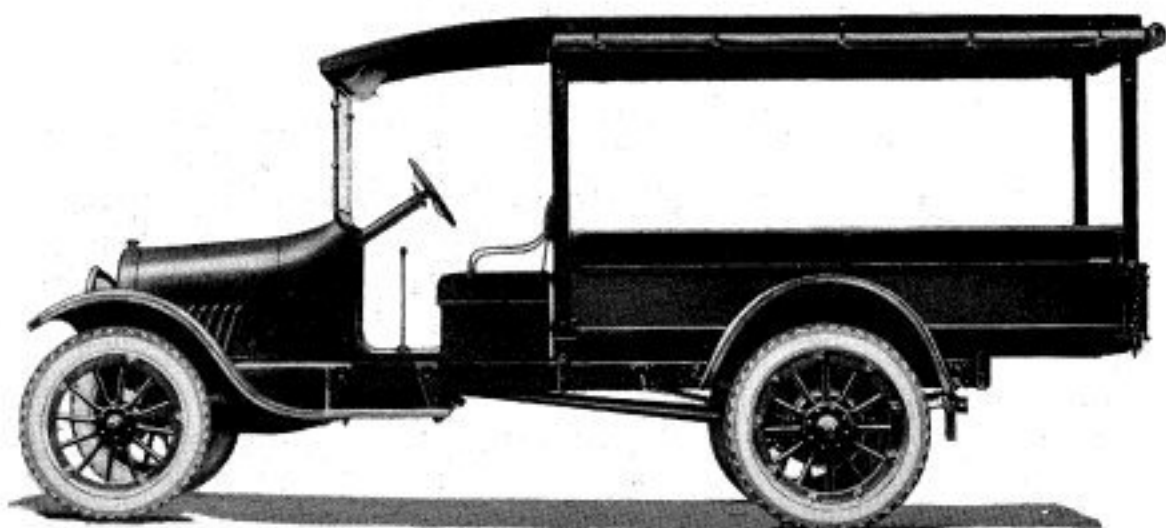
COLOR	Upper body, black; lower body, dark blue	LUBRICATION	Splash with pressure pump
SEATING CAPACITY	Five	RADIATOR	Cellular
POSITION OF DRIVER	Left side	COOLING	Water pump and fan
WHEELBASE	110 inches	IGNITION	Storage battery and generator
GAUGE	56 inches	STARTING SYSTEM	Two unit
WHEELS	Wood	STARTER OPERATED	Gear to fly wheel
FRONT TIRES	33 x 4 inches	LIGHTING SYSTEM	Electric
REAR TIRES	33 x 4 inches, anti-skid	VOLTAGE	Six to eight
SERVICE BRAKE	Contracting on rear wheels	WIRING SYSTEM	Lighting, single; starting, double
EMERGENCY BRAKE	Expanding on rear wheels	GASOLINE SYSTEM	Vacuum
CYLINDERS	Four	CLUTCH	Cone
HOW ARRANGED	Vertically	TRANSMISSION	Selective sliding
HOW CAST	En bloc	GEAR CHANGES	Three forward, one reverse
HORSEPOWER	21.75 (N.A.C.C. Rating)	DRIVE	Spiral bevel
BORE AND STROKE	3 ¹¹ / ₁₆ x 5 ¹ / ₄ inches	REAR AXLE	Three-quarters floating
		STEERING GEAR	Worm and gear

In addition to above specifications, price includes windshield, speedometer, ammeter, electric horn, complete lamp equipment, including dome light and headlight dimmers, demountable rims, extra rim and tire carrier, license holders, complete tool equipment including pump and jack.

**CHEVROLET
MOTOR
COMPANY**

224 W. 57th STREET
NEW YORK CITY

Price	\$1095
Chassis	920
Chassis with Cab	995
Express Body without Top	1030



CHEVROLET MODEL "G" LIGHT TRUCK

COLOR	Body, green panels, black mouldings; running gear, black	BORE AND STROKE	3 1/8 x 4 inches
CARRYING CAPACITY	1500 pounds	LUBRICATION	Splash with pressure pump
POSITION OF DRIVER	Left side	RADIATOR	Cellular
WHEELBASE	120 inches	COOLING	Water pump and fan
GAUGE	56 inches	IGNITION	Storage battery and generator
WHEELS	Wood	STARTING SYSTEM	Electric
FRONT TIRES	31 x 4 inches, pneumatic, anti-skid	STARTER OPERATED	Gear to fly wheel
REAR TIRES	34 x 4 1/2 inches, pneumatic, anti-skid	LIGHTING SYSTEM	Electric
SERVICE BRAKE	Contracting on rear wheels	VOLTAGE	Six to eight
EMERGENCY BRAKE	Expanding on rear wheels	WIRING SYSTEM	Lighting, single; starting, double
CYLINDERS	Four	GASOLINE SYSTEM	Gravity
HOW ARRANGED	Vertically	CLUTCH	Cone
HOW CAST	En bloc	TRANSMISSION	Selective sliding
HORSEPOWER	21.75	GEAR CHANGES	Three forward, one reverse
(N.A.C.C. Rating)		DRIVE	Spiral bevel
		REAR AXLE	Semi-floating
		STEERING GEAR	Spur and gear

In addition to above specifications, price includes curtains, windshield, speedometer, ammeter, electric horn, demountable rims, complete lamp and tool equipment, including pump and jack.