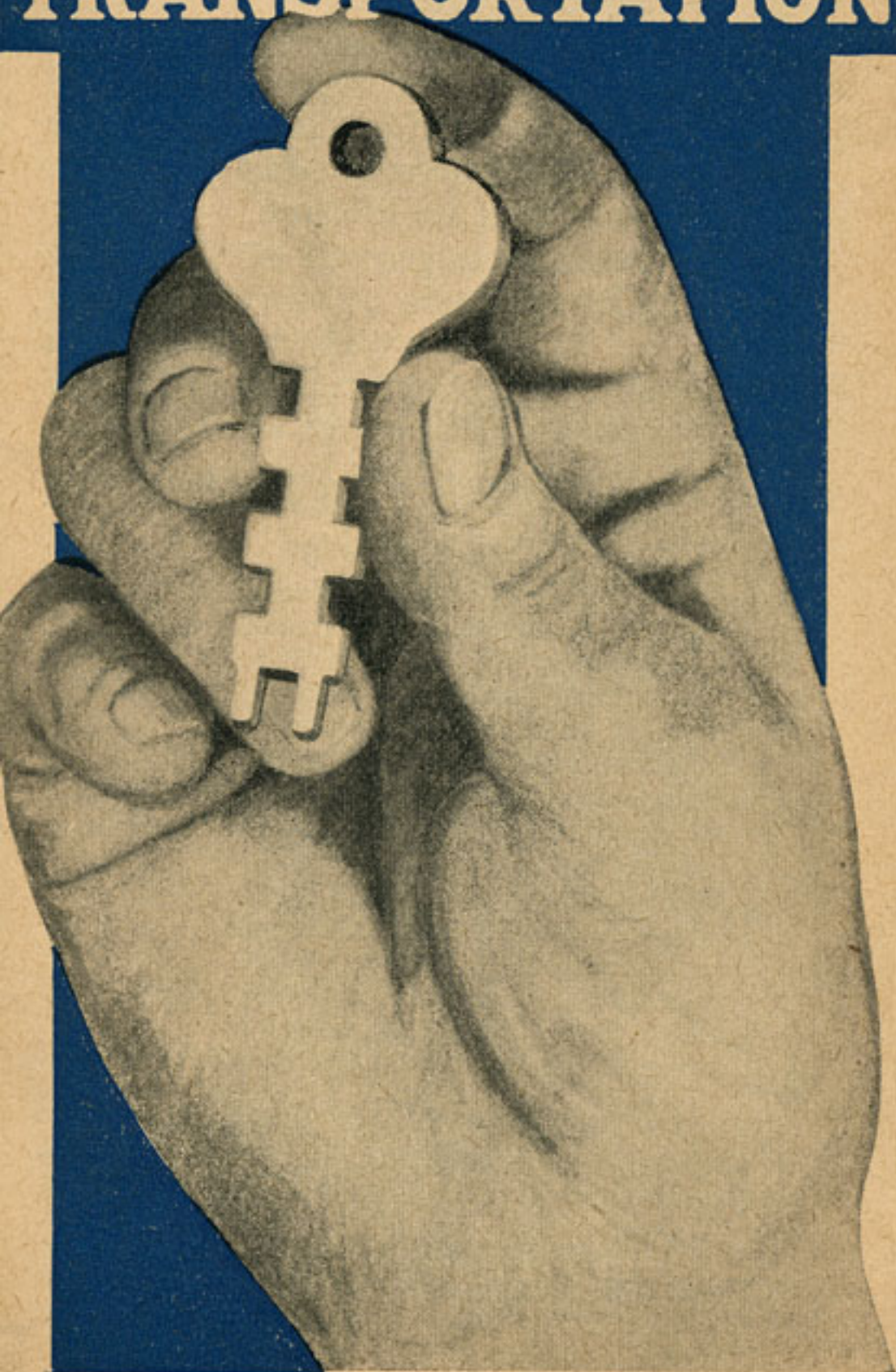


# THE KEY TO ECONOMICAL TRANSPORTATION



*for Economical Transportation*



# SUPERIOR TOURING

*For All the  
Family*

**\$495** *f.o.b.  
Flint  
Mich.*

The fastest selling quality car made. The utmost per dollar value in an open family car. Economical—modern—comfortable.



*for Economical Transportation*



# UTILITY COUPÉ

*The Ideal  
Extra Car*

**\$640** *f.o.b.  
Flint  
Mich.*



The most popular quality closed car made. Extra large windows and mammoth rear compartment. Low operating and maintenance cost.

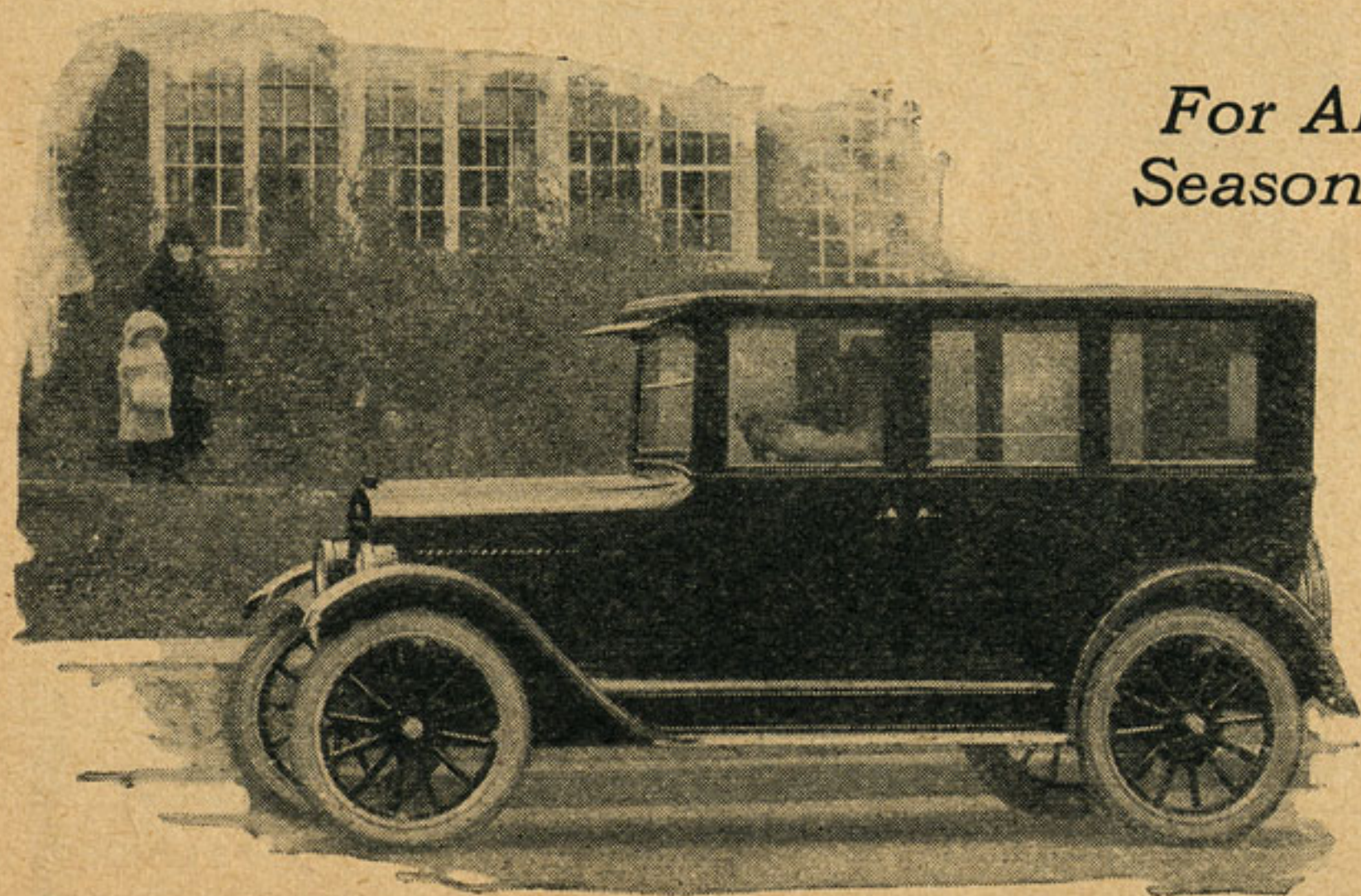
*for Economical Transportation*



# SUPERIOR SEDAN

*For All  
Seasons*

**\$795** *f.o.b.  
Flint  
Mich.*



The ideal all-year family car. Warm in winter—cool in summer. Its quality pleases particular people. Its economy satisfies all.

*for Economical Transportation*



# SUPERIOR ROADSTER

*Saves an  
Hour a Day*

**\$490** *f.o.b.  
Flint  
Mich.*



The favorite open car for daily use to and from work. Also popular with traveling salesmen. Extra large rear compartment.

*for Economical Transportation*



# Utility Express Truck Chassis

*For City or  
Country*

**\$550** *f.o.b.  
Flint  
Mich.*

*Chassis Only*

Fits all standard ton truck, commercial and dumping bodies. Fast, powerful, reliable, and very economical.



*for Economical Transportation*

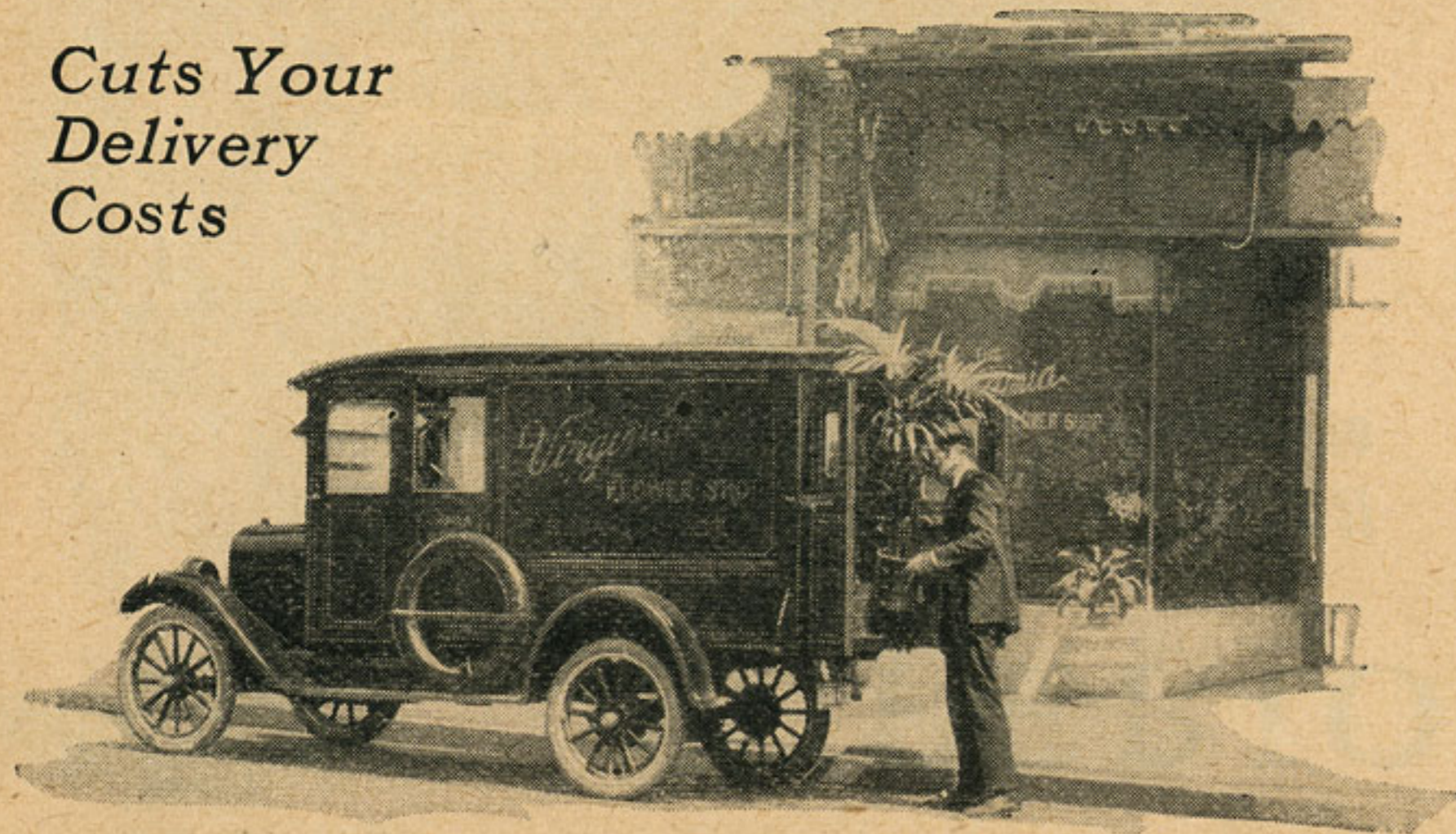


*Cuts Your  
Delivery  
Costs*

# COMMERCIAL CHASSIS

**\$395** *f.o.b.  
Flint  
Mich.*

*Chassis Only*



Fits all standard commercial bodies. For dependable, economical light delivery service it is unsurpassed.

*for Economical Transportation*



**T**HE key to economical transportation is the key to the Chevrolet car, which delivers transportation at the lowest average cost per mile.

When you buy an automobile, remember that the cost of transportation is made up of the purchase price of the car plus the cost of operating and maintaining it throughout its lifetime.

The tremendous growth of Chevrolet sales has been due to public recognition of the fact that Chevrolet transportation averages lower costs per mile than those of any other automobile made, *at any price.*

## QUALITY FEATURES

### All Models

Powerful Valve-in-head Motor  
3-Speed Sliding Gear Transmission  
Electric Starting and Lighting  
Distributor Ignition  
Alemite Lubricating System  
Improved Springs and Brakes  
Pump Circulating Cooling System  
Speedometer, Ammeter, and Oil Pressure Gauge on Dash  
Double Ventilating Windshield  
Legal Headlights with Dimmers  
Electric Horn  
Worm and Gear Steering Mechanism  
Spiral Bevel Rear Axle Gears  
Demountable Rims with Extra Rim

### Open Passenger Models

Dash Light                      Oblong Glass Rear Window  
Baked Enamel Finish      Curtains open with doors

### Closed Passenger Models

Plate Glass Windows      Windshield Wiper  
Dash Light                      Sun Visor  
Ternstedt Regulators      Cord Tires  
High-grade Bodies