

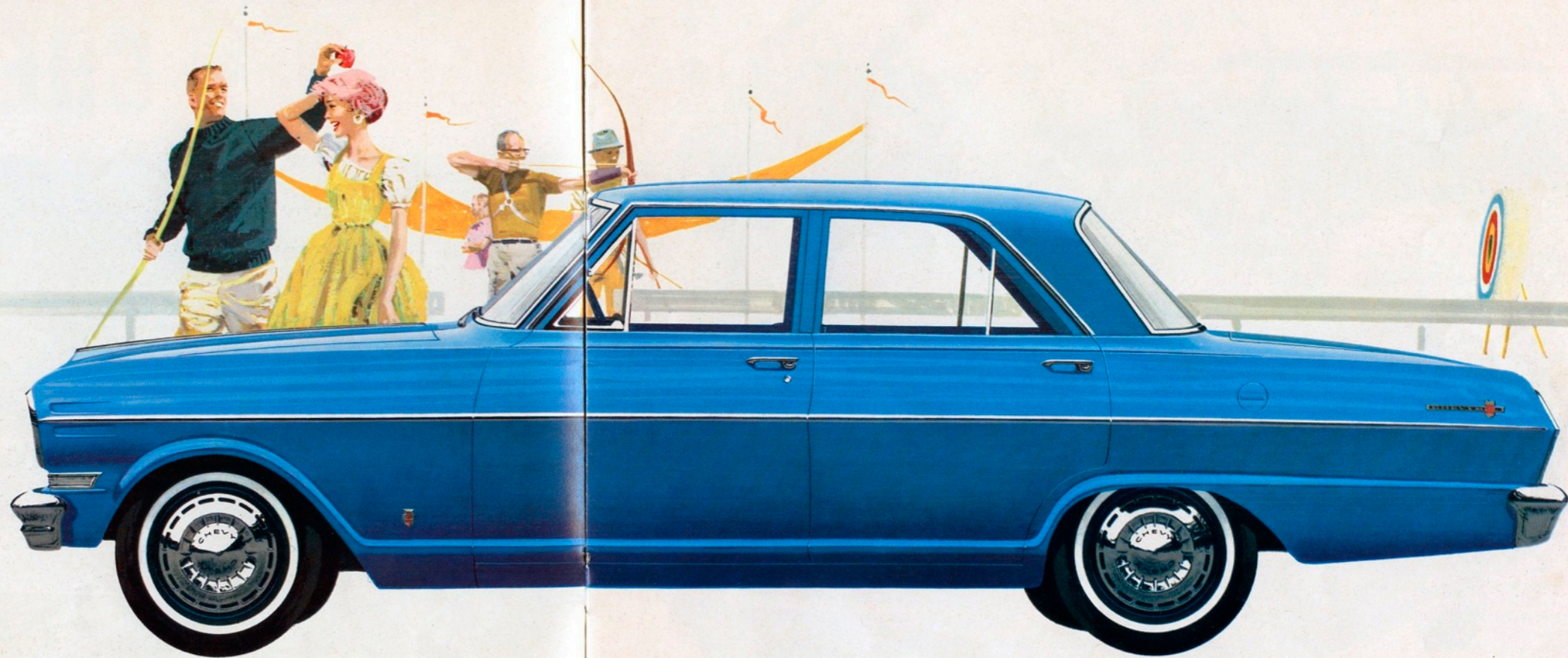
NEW CHEVY II



NEW CHEVY II

Modern, basic transportation in a totally new line of cars...the thrift-car in Chevrolet's new world of worth.

Here's an honest-to-goodness practical automobile, fashioned for low cost, low everyday upkeep. Built by Chevrolet, the car maker with a fifty-year reputation for dependable, economical transportation. The Chevy II is solidly built, trimly proportioned and designed with no-nonsense styling that will catch glances years away from the showroom. Fitted out with important engineering advancements you know you can trust in a Chevrolet-built car. You can choose your own level of performance and economy from two engines, a thrifty new 4 and 6, plus two transmissions, manual and automatic. A De Luxe Heater and Defroster comes as standard equipment. In every way, in each of its nine models, the Chevy II is an exciting trend-setter that remembers its Chevrolet tradition.



CHEVY II 300 4-DOOR SEDAN SHOWN IN NASSAU BLUE.



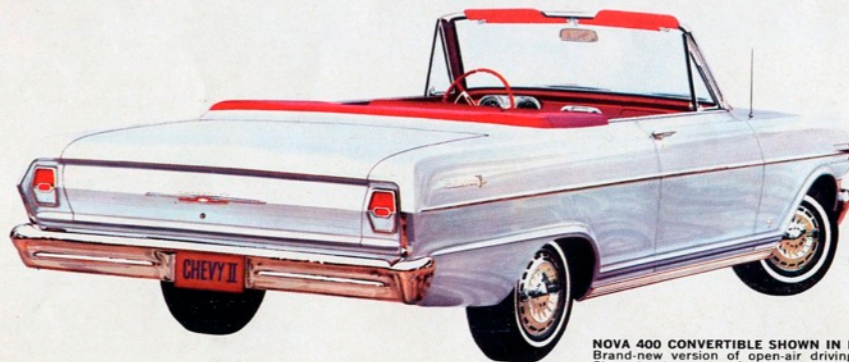
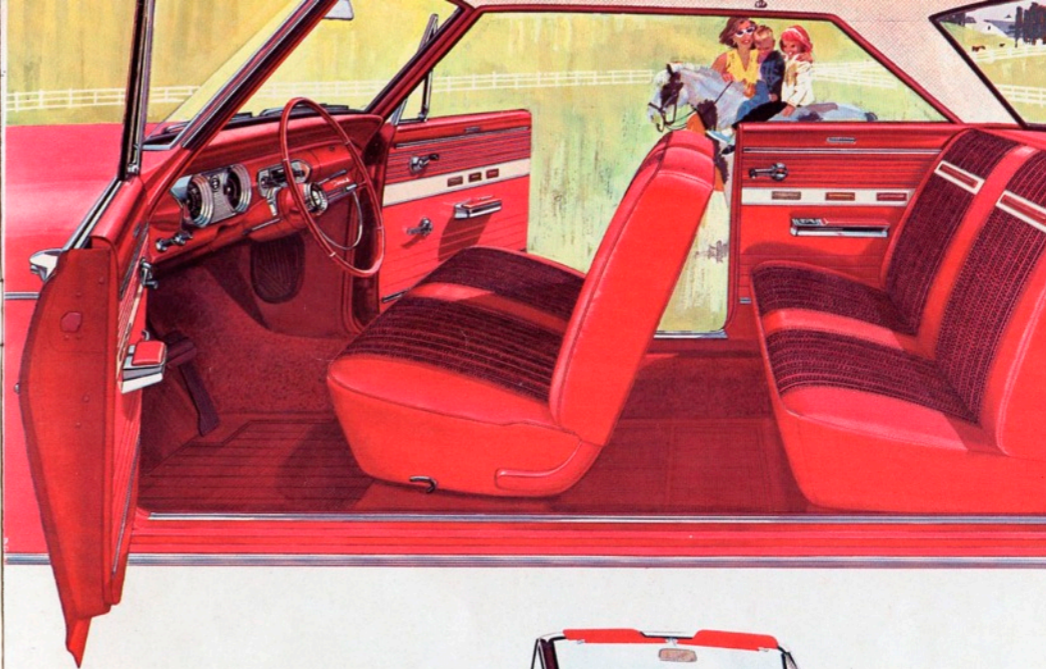
NOVA 400 4-DOOR 2-SEAT STATION WAGON IN TWILIGHT BLUE. Chevy II's Wagon leader. Here's cargo space a-plenty. Rear seat folds flat with the floor in a single motion for easy passenger-to-cargo conversion.



NOVA 400 SPORT COUPE IN AUTUMN GOLD. Styling . . . straight and simple. Bright metal molding on the hood, body sides and around rear cove, plus wide rocker sill trim distinguish Nova 400's fresh, new lines. Scheduled for production in late October.

Chevy II's
Most Elegant Series . . .

**NOVA
400**



NOVA 400 CONVERTIBLE SHOWN IN ERMINE WHITE. Brand-new version of open-air driving. Extra-durable Chevrolet top makes for a smooth, tightfitting weather shield. Available in a choice of four fade-resistant, color-keyed tops. Scheduled for production in November.

Sensibility at its Sunday Best

The Nova 400 is really fit for Sunday-go-to-meetin'. Yet it's modestly priced and really tailored for travel. Here's the car that gives you and your passengers more than enough head, hip, leg and shoulder room. Nova 400 is yours in a choice of three luxury models—Sport Coupe, Convertible and 4-Door 2-Seat Station Wagon. For sports car spirit, optional front bucket seats* are offered in the Convertible and Sport Coupe. Standard features in the Nova 400: dual sun visors, cigarette lighter, lockable glove box and automatic interior light switches. Also, foam-cushioned seats, padded arm rests front and back, built-in rear ash trays, color-keyed floor mats of rubber and deep-twist carpeting. Its new suspension system gives you a ride that's really relaxing . . . takes the bounce out of road bumps. Nova 400 has much more, too, at a price that pays you to pick Chevy II's Sunday best.

*Optional at extra cost.

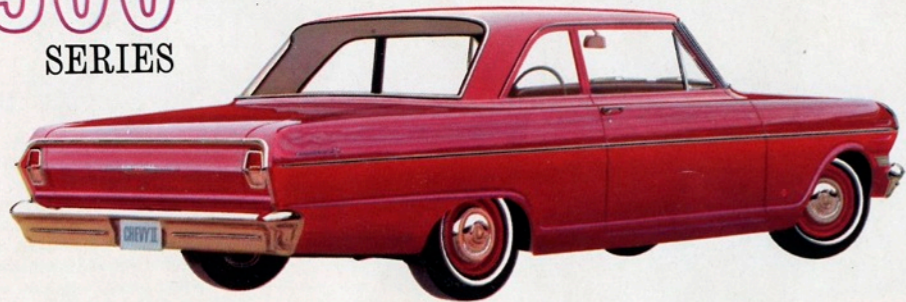
NOVA 400 INTERIORS

Picture yourself in Chevy II's top-of-the-line luxury. The smartly appointed interior of the Nova 400 Sport Coupe is handsomely upholstered in combinations of richly patterned fabrics and soft leather-like vinyls. The Convertible and Station Wagon come with all-vinyl interiors to resist sun fading, rough wear and soiling. Take your choice of five distinctive color designs including fawn, aqua, red, blue and gold. Door-to-door, color-keyed rubber floor mats with deep-twist carpet covering the tunnel area.



CHEVY II 300 4-DOOR SEDAN SHOWN IN TUXEDO BLACK. For a family this 4-door is the perfect choice. Seats six in style and comfort. Electrically operated wipers (standard in all Chevy IIs) clear the windshield with a parallel action giving greater center vision.

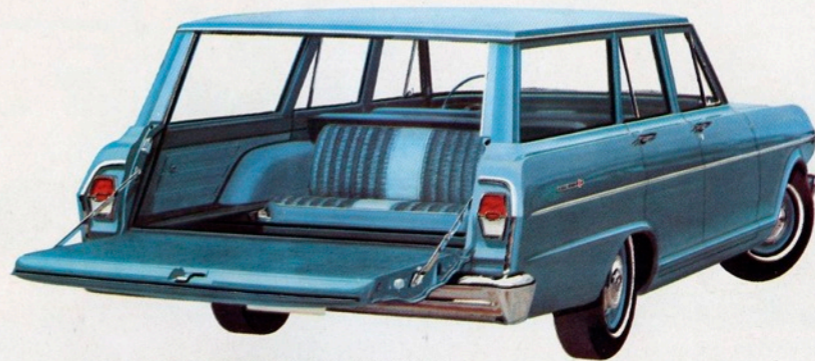
CHEVY II
300
SERIES



CHEVY II 300 2-DOOR SEDAN IN HONDURAS MAROON. Designed to be beautiful yet practical. Large trunk area offers family-size load space—total 25.5 cubic feet—and easily reached.

Function with a
Flair in a
Family Car!

Certainly, Chevy II 300 is the car that puts you into the lap of low-cost luxury. Built with clean looks and planned-for-people comfort. Sofa-high, sofa-soft seats, large door openings, plenty of head, hip, leg and shoulder room for six people. Plus an easy-to-read, easy-to-reach instrument panel. In every way, Chevy II 300 can be counted on to give you a family-size car full of comfort. You'll delight in all the standard extras, too. Twin sun visors, lockable glove compartment, automatic interior light switches, arm rests front and back, foam-cushioned front seat, cigarette lighter and single-key locking. Chevy II 300 gives you all this and a lot more for a price less than you would expect to pay. Offered in three models . . . 2-Door Sedan, 4-Door Sedan and 4-Door 3-Seat Station Wagon.



CHEVY II 300 4-DOOR 3-SEAT STATION WAGON SHOWN IN TWILIGHT TURQUOISE. Third seat faces rear, easy to enter, no crawling over a second seat. Power-operated rear window is standard equipment. (Optional at extra cost on Nova 400 and Chevy II 100.)

**CHEVY II
300 INTERIORS**

Interior selection of four colors—fawn, aqua, red and blue. In both Sedans and the Station Wagon, a large area of beautifully patterned, long-wearing fabric accents seat cushions and backrests. Cushion sides and edges, seat center and upper backrest are trimmed in durable vinyl. Built-in ash trays are standard in rear arm rests. Vinyl-coated rubber floor mats in color-keyed design are included in all Chevy II 300 models.



CHEVY II
100
 Series



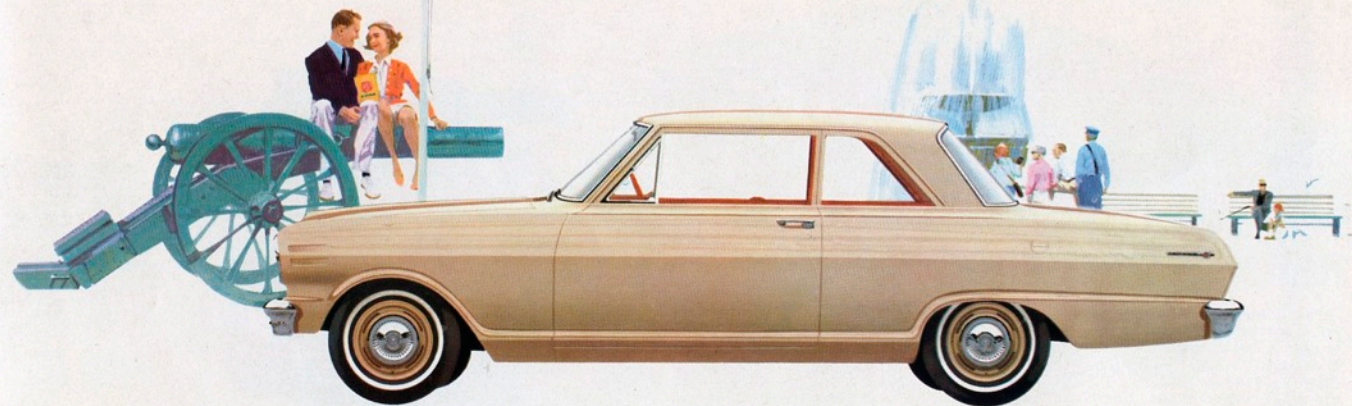
CHEVY II 100 4-DOOR SEDAN SHOWN IN ROMAN RED. Choose from a total of 14 exterior colors or the 10 two-tone combinations (except convertible) offered in all Chevy II's.

The Beauty
 that's Built
 to Fit
 Every Budget

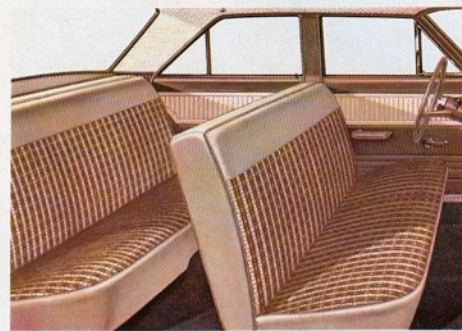
Here's solid Chevrolet value, available in a 2-Door Sedan, 4-Door Sedan and 4-Door 2-Seat Station Wagon. Check a few of the features you wouldn't expect to find at Chevy II's lowest price: foam-cushioned front seat, dome light, double sun visors, dual arm rests, single-key locking system and roomy, lockable glove box. Instrument panel controls are clustered at your

finger tips. Door openings are high and wide for easy entry and exit. Luggage space is more than ample for average family use. The Chevy II 100 (like all Chevy II models) has something new in a ride, too. Independent coil spring suspension in front and Mono-Plate Spring rear suspension (the one you've heard so much about) combine to give you a ride that's smooth

and quiet by any standards. What's more, Chevy II 100 is marvelously maneuverable . . . a real handling treat for traveling in any kind of traffic. Its new size and weight distribution make it a snap to steer and park. On the road, feeling the ride, surrounded by low-cost value, you'll realize Chevy II 100's thrifty price includes an extra portion of driving pleasure.

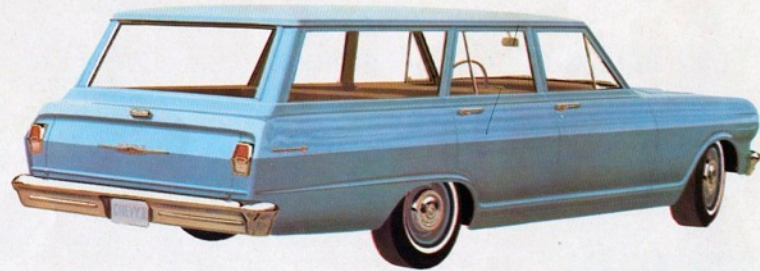


CHEVY II 100 2-DOOR SEDAN SHOWN IN ADOBE BEIGE. Deep-gloss Magic-Mirror finish keeps its showroom shine with hardly more than a car wash.



CHEVY II 100 INTERIORS

Dressed up and designed in 3 color schemes—fawn, aqua and red. 2-Door and 4-Door Sedans offer a handsome upholstery combination of fabric and leather-grain vinyl. Station Wagon features an easily cleaned all-vinyl interior for rugged wear. Floor coverings on all Chevy II 100's are durable, ribbed rubber mats.



CHEVY II 100 4-DOOR 2-SEAT STATION WAGON SHOWN IN SILVER BLUE. Stowage space in Chevy II Station Wagons is 76.2 cu. ft. with rear seat down. Total load length with tailgate down is over 9 feet — with tailgate up it's over 7 feet. Rear window rolls down into tailgate.

CHEVY II POWER TEAMS

2 Engines let you take your pick of Performance, Economy, Power

NEW 90-HP SUPER-THRIFT 153

An economical, new 4-cylinder engine like you've never driven before and built to keep operating expenses down to a minimum. The 153-cu.-in. Super-Thrift is designed to run at top efficiency on regular fuel. Squeezes extra mileage from every gallon and puts greater distance between gas stops. Single-barrel carburetor, hydraulic valve lifters, 8.5 to 1 compression ratio, manual choke and 90-hp rating all contribute to Super-Thrift's outstanding economy and performance.

NEW 120-HP HI-THRIFT 194

For extra performance punch there's the 194-cu.-in. Hi-Thrift 6-cylinder engine. Its short stroke design cuts down fuel-wasting friction and offers a highly compact power plant. Maximum economy on regular gas with a single-barrel carburetor, 8.5 to 1 compression ratio and 120-hp. Hydraulic valve lifters and seven main bearings add to its remarkably smooth, quiet operation. Automatic choke is temperature and vacuum controlled for more effective cold engine starting.

Your choice of two transmissions

3-SPEED SYNCHRO-MESH

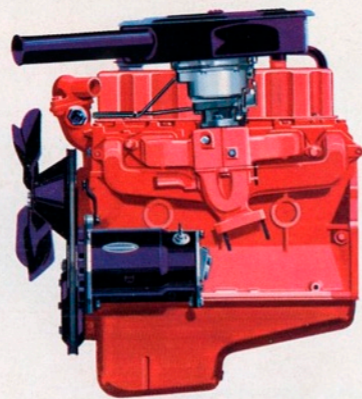
Chevy II's standard transmission—a highly economical unit designed for quick, smooth manual shifting. Three speeds forward and one reverse. Shift lever is conveniently located on the steering post.

POWERGLIDE*

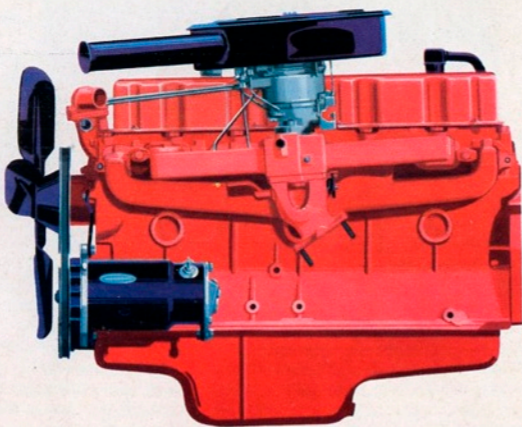
A specially developed version of the popular Chevrolet Powerglide is available on all models for completely automatic shifting. Its new aluminum case and extension reduce previous weight by approximately 35%. Air cooled, includes a parking position.

*Optional at extra cost.

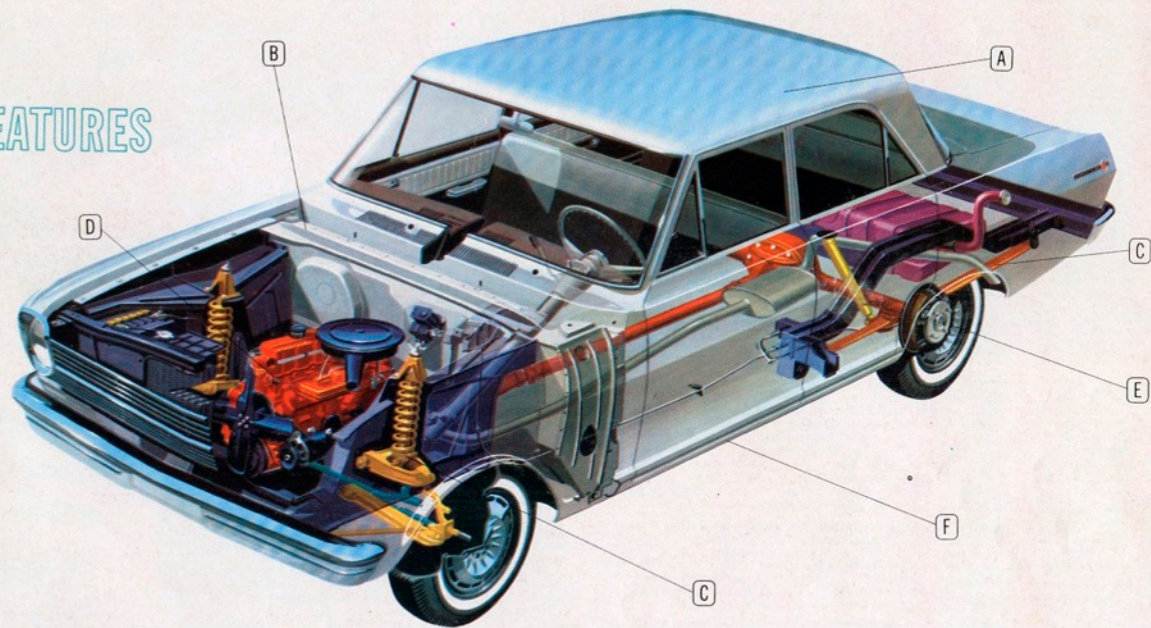
4



6



QUALITY FEATURES
THAT PUT
CHEVY II
IN A
CLASS
BY ITSELF



A BODY BY FISHER gives the new Chevy II solid strength and lasting value in its strict attention to details. Every unitized body is a product of quality craftsmanship . . . built for safety, durability and comfort. There's beauty, too, in the finished look of every tight-fitting part. Body by Fisher is a distinction that puts Chevy II leagues ahead of many other makes.

B BODY ASSEMBLY consists of two unitized, box-like sections for additional strength. One major unit, forward from the firewall, is securely bolted to the unitized body. This new design reduces weight, increases rigidity and gives you a solid body-frame combination. Bolt-on front fenders offer the economy feature of easy removal for replacement or repair.

C NEW SUSPENSION SYSTEM makes for a comfortable, constant ride no matter what roads you travel. Effectively reduces front end dip in braking. New front and rear suspension features reward you with a ride comparable to cars costing far more.

REAR SUSPENSION. A totally unique type of rear spring makes old-fashioned multi-leaf springs obsolete. Representing years of research, Chevy II's longer life Mono-Plate Springs never require lubrication, eliminate friction noise and squeaking frequently found in multi-leaf equipped cars. Beside the new Mono-Plate Spring at each rear wheel, shock absorbers, diagonally mounted, add to stability and comfort.

FRONT SUSPENSION is designed with an independent, high-mounted coil spring at each forward wheel. Distributes the spring load throughout the front end structure and dampens road shock

and vibration before they reach the passenger compartment. Further front end cushioning is furnished by double-action shock absorbers mounted within each spring.

D NEW 4-CYLINDER ENGINE. The new Super-Thrift 153 offers everything the mileage-minded person is looking for . . . more economy, plus remarkable performance . . . and on regular gas, too. Includes a large-bore, short stroke design and five main bearings for added smoothness and optimum durability. 8.5 to 1 compression ratio, 90-hp, silent hydraulic valve lifters and a fuel-saving manual choke.

E SAFETY-MASTER BRAKES. A light touch on the brake pedal results in a virtually straight, level stop. Heat generated by braking—the kind that causes many brake failures and wear—is reduced by specially slotted wheels. Long-wearing bonded linings cover a large braking area to assure you sufficient grip for safe, secure stops.

F CORROSION PROTECTION. A systematic application of rust preventives protects all strategic body parts. Side rails, rocker panels and other reinforcements are galvanized for maximum corrosion resistance. Water collecting areas are generously coated with an aluminum and wax compound. Other Chevy II components are treated with at least one application of primer, sealer or other anti-rust material.

SPECIFICATIONS



BODY—Unitized design, with body-frame unit and separate front end unit combined into single structure of exceptional strength and rigidity. Extra-heavy pillars and roof rails, reinforced floor, and double-walled front structure. High-Level ventilation and built-in blended-air heater and defroster system. Thoroughly sealed and insulated. Friction-type vent-panels. Single-key locking system, pushbutton outside door handles. Single-unit headlights. Electric parallel-action windshield wipers, directional signals, front ashtrays, enclosed steering column. Magic-Mirror acrylic lacquer finish.

CHEVY II 100 STANDARD FEATURES—Distinctive trim and identification, recessed-hub steering wheel with horn button, foam-cushioned front seats, front armrests, dual adjustable sun visors, glove compartment lock, center dome light with instrument panel switch. Color-keyed pattern cloth and vinyl upholstery and cloth headlining in Sedans, pattern vinyl in Station Wagon. Black rubber floor mats.

CHEVY II 300 ADDITIONAL FEATURES—Extra-quality trim and identification, foam-cushioned rear seats, nylon-blend pattern cloth and vinyl seat upholstery. Vinyl headlining in Station Wagon, cloth in Sedans. Horn ring on steering wheel, rear armrests, cigarette lighter, automatic front door dome light switches. Color-keyed vinyl-coated rubber floor covering—plus Chevy II 100 general features.

CHEVY II NOVA 400 ADDITIONAL FEATURES—Luxury trim and distinctive identification, rich nylon-blend pattern cloth and vinyl seat upholstery in Sport Coupe—pattern vinyl in Station Wagon and Convertible and with Sport Coupe and Convertible bucket seat option*. Manually operated folding vinyl-coated fabric top on Nova 400 Convertible. Combination carpet and vinyl-coated rubber floor covering, vinyl headlining (except Convertible)—plus Chevy II 100 and 300 general features.

ENGINE—120-hp HI-THRIFT 194; 6-cylinder, 194-cu.-in. displacement, 8.5:1 compression ratio, single-barrel carburetion, automatic choke, single exhaust. 90-hp SUPER-THRIFT 153; 4-cylinder, 153-cu.-in. displacement, 8.5:1 c.r., single-barrel carburetion, manual choke, single exhaust. Both Chevy II engines feature valve-in-head design, aluminum pistons, forged steel crankshaft, positive-shift starter, hydraulic valve lifters, oil-wetted type air cleaner, and full-flow oil filter.

TRANSMISSION—POWERGLIDE™: Two-speed three-element torque converter with hydraulically controlled planetary

gears. Positive parking lock. Selector sequence Park-R-N-D-L. 3-SPEED SYNCHRO-MESH: All-helical gear design with steering column control. Gear ratios: 2.94:1 first, 1.68:1 second, 1:1 third, 3.33:1 reverse.

CLUTCH—Diaphragm spring type. Single plate dry disc with two facings, spring cushioned, permanently lubricated release bearing. 8.0-inch diameter disc with 90-hp Super-Thrift 153 engine, 9.12 inch with 120-hp Hi-Thrift 194.

CHASSIS—SUSPENSION: Independent front suspension with high-mounted coil springs, built-in leveling action. Mono-Plate rear springs. Double-acting shock absorbers. **WHEELS AND TIRES**: 13" wheels, 6.00 x 13 4-ply rating blackwall tubeless tires on 2-Door and 4-Door Sedan models—6.50 x 13 4-ply rating on Station Wagons and all Nova 400 models. **SAFETY-MASTER BRAKES**: 9" hydraulic, bonded linings, 145-sq.-in. area. Hand-operated mechanical parking brake. **STEERING**: Precision Ball-Race gear, overall ratio 25.4:1. **REAR AXLE**: Hypoid, semi-floating, three ratios tailored to power teams. **FUEL CAPACITY**: 16 gallons. **ELECTRICAL**: 12-volt system, 30-ampere generator and 42-amp-hour 54-plate battery.

DIMENSIONS—Wheelbase, 110". Front and rear tread: Station Wagons 56.3" and 55.8", other models 56.8" and 56.3". Overall length—Station Wagons 187.4", other models 180"; width—170.8"; height—Sedans and Station Wagons 55.0", Sport Coupe 54.0", Convertible 54.5".

OPTIONAL EQUIPMENT—Power steering. Power brakes. Power tailgate window (Standard on 3-seat Wagon). Station Wagon split second seat. Bucket front seats**. Simulated wire wheels. Vented full wheel covers. Heavy-duty springs. Heavy-duty shock absorbers. 3.36:1 and 3.55:1 axle ratios**. Positioning rear axle. Heavy-duty clutch. Heavy-duty radiator. Special sintered-metallic brake linings. Soft-Ray tinted glass. Padded instrument panel. Rear armrests**. De luxe air conditioner. Two-tone finish. De luxe Body Equipment Group A (includes non-glare inside mirror, grille guard, rear bumper guard). Comfort and Convenience Equipment (for Nova 300 includes back-up lights, outside rearview mirror, 2-speed windshield wiper and windshield washer—these plus glove box light in all other models). Push-button or manual radio and antenna. Heavy-duty generator or Delcotron**. Heavy-duty battery. Crankcase ventilation equipment. Special police or taxicab equipment**. Full line of Custom Feature accessories.

*Optional at extra cost.

**Availability determined by other model or equipment.

Chevy II Custom Features and Power Assists*

Here are several popular options that will add extra touches of comfort and pleasure to your driving.

RADIOS—On-the-road entertainment at your fingertips. Two to choose from... automatic push button or manual tuning. Transistor powered for longer life. Acoustically engineered for Chevy II.

POWER STEERING makes driving nearly effortless. Puts you in complete command while parking, maneuvering in traffic or negotiating tight turns. Also helps keep your car under control in severe road conditions.

AIR CONDITIONING cools your Chevy II in a jiffy. Lets you choose your own climate in hot spells. Circulates virtually pollen- and dust-free air all summer long. Dehumidifies in rainy weather and helps prevent window clouding. For all models.

POWER BRAKES take the push out of stopping... increase your margin of safety and protection. This popular power assist reduces braking effort up to one-third over ordinary brakes. A light toe touch on the pedal puts brakes to work.

Check with your Chevrolet dealer for many other Custom Feature accessories available for the Chevy II.

CHEVROLET