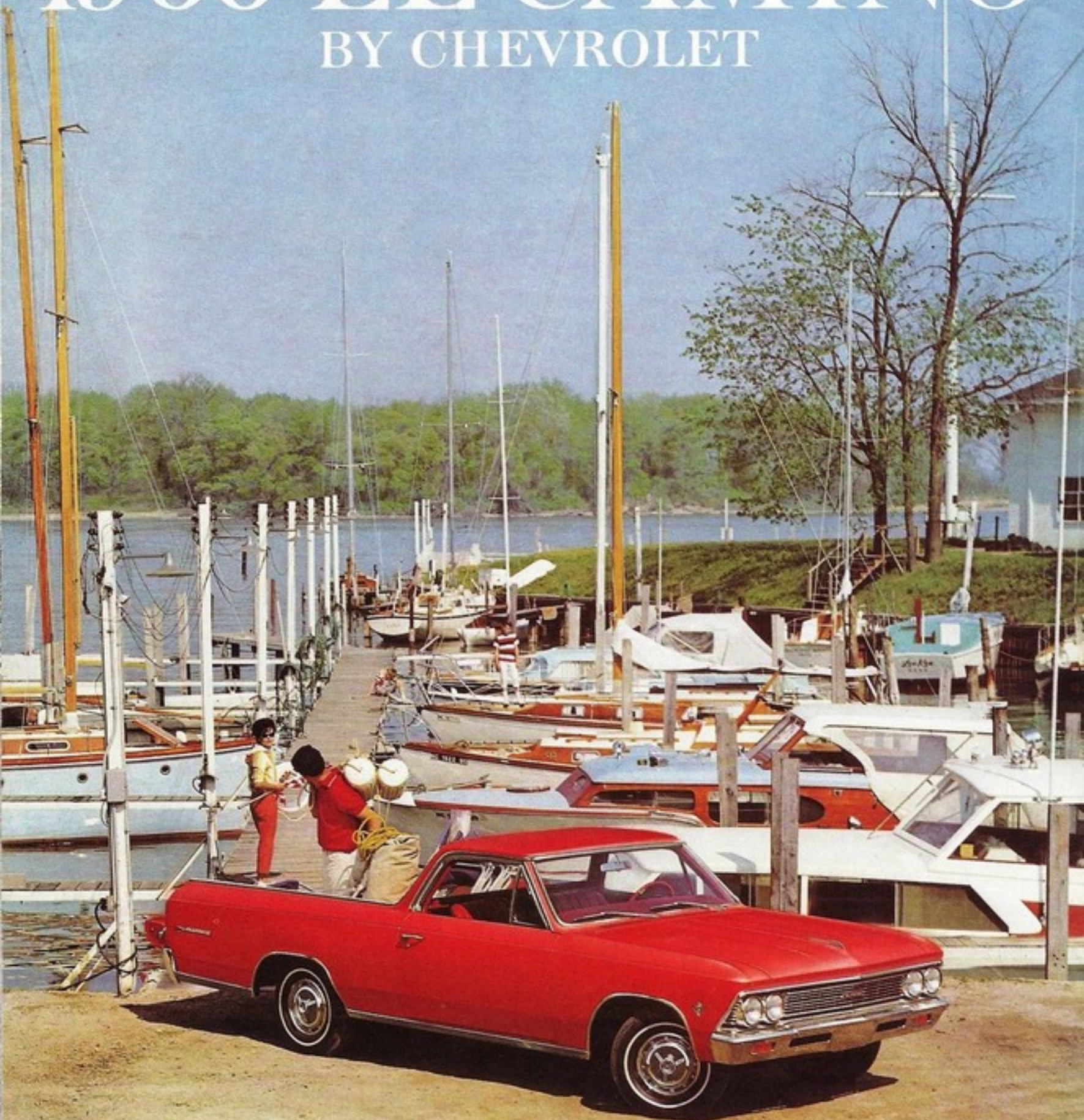


1966 EL CAMINO

BY CHEVROLET



EL CAMINO



HERE'S A VEHICLE THAT'S GAME FOR PRACTICALLY ANYTHING. The new El Camino is more than just a dual-purpose vehicle. It is, by its very design, endowed with a streak of versatility that enables it to step gracefully into dozens of roles. With a spacious pickup box, crisp Chevelle styling and a long list of options and accessories, El Camino can be both pickup and passenger car, and everything in between. And for 1966, El Camino is smarter on the outside, nicer on the inside and more powerful under the hood. It comes in Standard or Custom models, has a wheelbase of 115", four-wheel coil-spring suspension, and is available with any of 24 different engine/transmission combinations. It's a smooth-riding, easy-handling, quick-moving piece of machinery that will do the town or the job—and do it better than ever before.

LIKES TO WORK



Work is seldom what you'd call *fun*, but any time you can spend your day behind the wheel of a vehicle like this, the job can't help but go a bit faster. In addition to the standard work-proven features on the preceding page, there is a broad range of options and accessories available for El Camino, enabling it to be custom-tailored

to your specific job situation. You can, for example, choose any of seven different engines (two Sixes and five V8s); five different transmissions (a 3-speed, a 3-speed overdrive, two 4-speeds and a Powerglide automatic); six different rear axle ratios; a standard or Positraction rear axle; heavy-duty springs and other special items.



NEW 396-CU.-IN. V8—comes in two different strengths: 325 and 360 horsepower. A 195-hp and 220-hp 283 V8 and a 275-hp 327 V8 are also available.



TACHOMETER—for use with either six- or eight-cylinder engines; provides an accurate check of engine revs up to 7000 rpm; helps determine exact shift points.



4-SPEED TRANSMISSION—features the smooth, fast action of Synchro-Mesh on all forward gears, plus the added sportiness of a floor-mounted shift lever.

LOVES TO PLAY



And does it ever! A vehicle that will work as hard as El Camino just naturally likes to kick up its heels. And uniquely enough, the same features that make it such a fine working partner also make it a wonderful playmate when the job's done. For play, just as for work, El Camino can be equipped to suit the most individualized

tastes. It can be ordered with power steering, power brakes, tinted glass, padded instrument panel, AM-FM radio and power windows, along with the special items shown below. And you can equip your El Camino for camping by installing one of the camper bodies offered by manufacturers throughout the country.



BUCKET SEATS—are upholstered in good-looking long-wearing vinyl and offer an extra margin of comfort to the driver during long hours at the wheel.



NEW WHEEL DISCS—redesigned for 1966 to complement El Camino's graceful new styling. Simulated wire wheel covers are also available, as are whitewall tires.



FOUR-SEASON AIR CONDITIONING—keeps inside air cool, free of dust and pollen. Heavy-duty radiator, Delcotron generator and fan are included.

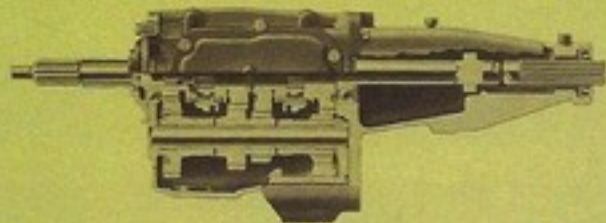
FEATURES



STANDARD INTERIOR now sports all-vinyl appointments and includes seat belts, a padded instrument panel and sun visors, a shatter-proof rear-view mirror and improved door latches. Non-glare windshield wiper arms and a side-view mirror are at no extra cost.



CUSTOM INTERIOR features richer, more luxurious all-vinyl upholstery, enhanced by a re-styled seat and side panels and a redesigned instrument panel, accented by bright new trim moldings and deep-pile carpeting. Three interior color combinations are available.



STANDARD 3-SPEED TRANSMISSION is easily operated by a shift lever on the steering column.



AIR-BOOSTER REAR SHOCK ABSORBERS on all El Caminos, can be inflated to provide extra load capacity.



SIX-FOOT CARGO BOX features a folding tailgate, a reinforced floor and rugged double sidewalls.



FOUR WHEEL COIL SPRING SUSPENSION produces exceptional ride smoothness, plus positive load control.

STANDARD EQUIPMENT

FRONT SUSPENSION—Type: Independent with coil springs; capacity 1900 lbs. Springs: Coil; capacity 950 lbs. Shock Absorbers: 1" diameter standard.

REAR SUSPENSION—Rear Axle: Capacity 2700 lbs.; ratios 3.36 (6-cyl. models), 3.08 (283 and 327 V8 models), 3.07 (396 V8 models). Springs: Coil; capacity 1100 lbs. Shock Absorbers: Air-booster type standard. May be adjusted by varying pressure to meet load and road requirements.

ENGINE—120-hp Hi-Thrift 194 Six standard on models 133-13580, 195-hp Turbo-Fire 283 V8 standard on models 134-13680. Clutch: 9 $\frac{1}{8}$ " diameter (6-cyl. engines); 10" diameter (8-cyl. engines).

TRANSMISSION—3-Speed manual.

BRAKES—Type: Hydraulic self-adjusting. Sizes: 9 $\frac{1}{2}$ " x 2 $\frac{1}{2}$ " front; 9 $\frac{1}{2}$ " x 2" rear. 173-sq.-in. total lining area.

ELECTRICAL—Battery: 44-amp.-hr. Direction Signals: Front and rear. Generator: 37-amp. Back-up lights. Delcotron. Windshield Wipers: Dual electric 2-speed.

SEAT BELTS—Two; driver and passenger.

TIRES—Five tubeless 7.35-14 2-ply (4PR).

OPTIONAL EQUIPMENT*

Four-Season Air Conditioning • Positraction Rear Axle • HD Battery • Custom Seat Belts with Retractors • Power Brakes • Console • Convenience Equipment • HD Clutch (6-cyl. engine only) • Engines: 140-hp 230 Six, 220-hp 283 V8, 275-hp 327 V8, 325-hp 396 V8, 360-hp 396 V8 • Temperature-Controlled Radiator Fan • 42-Amp, 61-Amp and 62-Amp Delcotron • Tinted Glass • Front Bumper Guard • Tri-Volume Electric Horn • Strato-Ease Headrests • Highway Emergency Kit • Transistorized Ignition System • Automatic Level Control • Spare Wheel Lock • HD Radiator • Manual Control Radio • Pushbutton Control Radio • AM-FM Pushbutton Control Radio • Strato-Bucket Seats • Power Steering • Sports-Styled Walnut-Grained Steering Wheel • Seven-Position Comfortilt Steering Wheel • Special Front and Rear Suspension • Electric Tachometer • Transmissions: 3-Speed Overdrive, 4-Speed, Powerglide • Bright Metal Wheel Covers • Mag-Styled Wheel Covers • Simulated Wire Wheel Covers • Power Windows

CUSTOM FEATURE ACCESSORIES—In addition to the full range of factory-installed optional equipment, there's a wide variety of dealer-installed Custom Feature Accessories available to custom tailor your El Camino. Ask your Chevrolet dealer for full details.

*Extra Cost

ENGINES

	Hi-Thrift 194 Six	Turbo-Thrift 230 Six	Turbo-Fire 283 V8	Turbo-Fire 283 V8	Turbo-Fire 327 V8	Turbo-Jet 396 V8	Turbo-Jet 396 V8
Displacement (cubic inches)	194	230	283	283	327	396	396
Compression Ratio	8.5 to 1	8.5 to 1	9.25 to 1	9.25 to 1	10.5 to 1	10.25 to 1	10.25 to 1
Gross Horsepower (@ RPM)	120 @ 4400	140 @ 4400	195 @ 4800	220 @ 4800	275 @ 4800	325 @ 4800	360 @ 5200
Gross Torque (ft.-lbs. @ RPM)	177 @ 2400	220 @ 1600	285 @ 2400	295 @ 3200	355 @ 3200	410 @ 3200	420 @ 3600

Engine	Transmissions	Rear Axle Ratios
120-hp 194 Six 140-hp 230 Six	3-Speed Fully Synchronized Powerglide	3.36
	Overdrive	3.70
195-hp 283 V8 220-hp 283 V8	3-Speed Fully Synchronized	Std. 3.08
		Opt. 3.36
		Opt. 3.70
	4-Speed Wide-Range	Std. 3.08
		Opt. 3.70
Powerglide	3.08	
Overdrive	3.70	
275-hp 327 V8	3-Speed Fully Synchronized	Std. 3.08
	4-Speed Wide-Range	Opt. 3.70
	Powerglide	3.08
325-hp 396 V8	3-Speed Fully Synchronized	Std. 3.31
		Opt. 3.55
	4-Speed Wide-Range	Opt. 3.73
		Opt. 4.10*
360-hp 396 V8	3-Speed Fully Synchronized	Std. 3.73
		Opt. 3.31
		Opt. 3.55
	4-Speed Wide-Range	Opt. 4.10*
		Opt. 4.56*
		Opt. 4.88*
		Std. 3.73
4-Speed Close-Ratio	Opt. 3.31	
	Opt. 3.55	
	Opt. 4.10*	

See the Chevelle Section of the 1966 Finger-Tip Facts Book for transmission ratios.
*Available as Positraction only.



All illustrations and specifications contained in this literature are based on the latest product information available at the time of publication. The right is reserved to make changes at any time in prices, colors, materials, equipment, specifications and models, and also to discontinue models. CHEVROLET MOTOR DIVISION OF GENERAL MOTORS CORPORATION, DETROIT, MICHIGAN, LITHO IN U.S.A.