

XT5



Cadillac

2018



TAILORED TO YOUR JOURNEY

Designed to help you master what is ahead. From an ingenious cabin that is as spacious as it is versatile, to a striking stance, the Cadillac XT5 is ready to accommodate your needs. A distinctive sense of style, much like the people who drive it.

The 2018 XT5.



XT5 Platinum in Red Passion Tintcoat. Shown with available equipment.

PASSIONS

Craftsmanship
Innovation
Performance





Revel in a space that

speaks volumes about fit and form

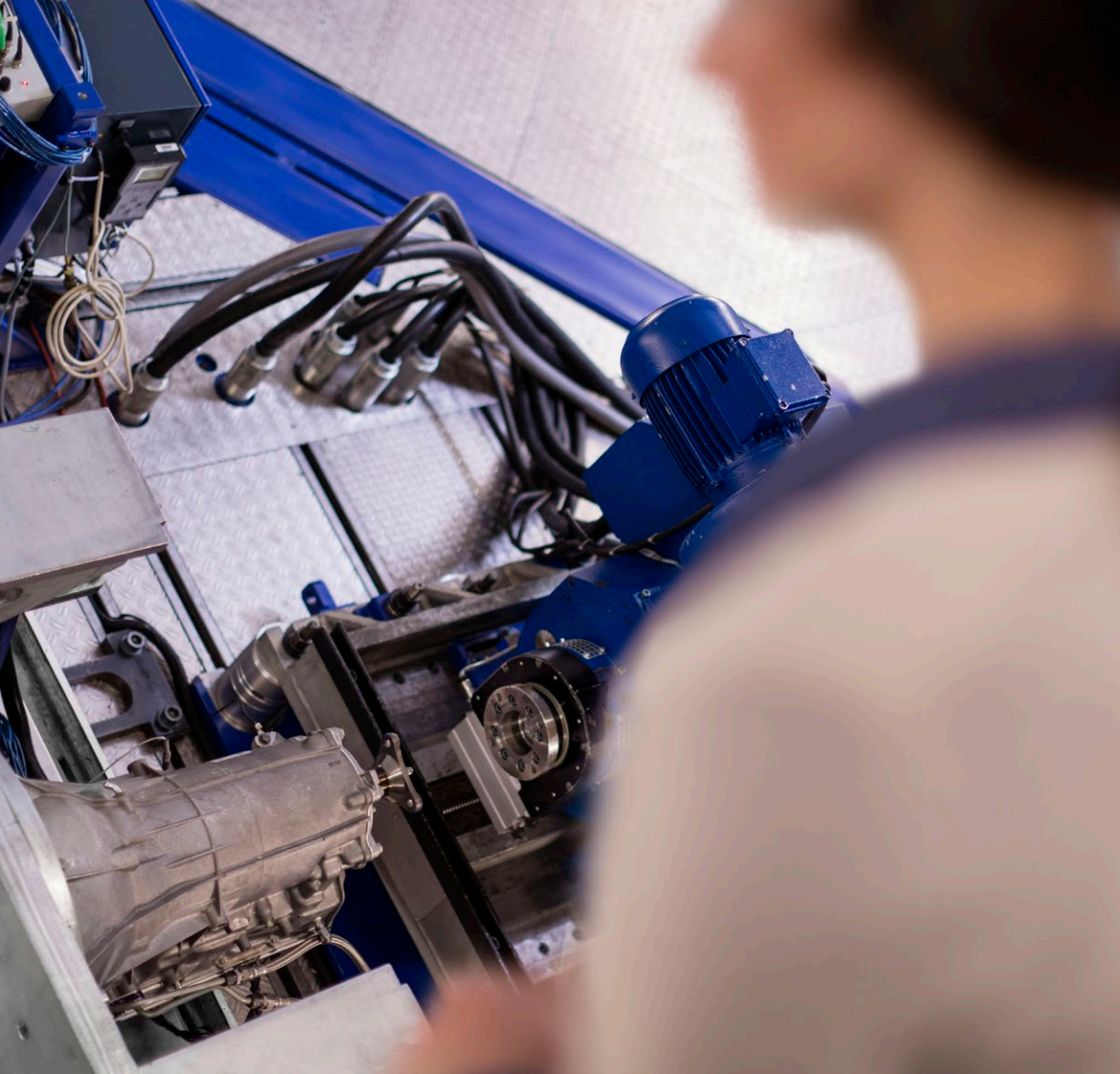




Advanced design realized



from restless ambition



All paths taken

lead to confidence and control



FEATURES

Exterior
Interior
Platinum
Safety
Performance
Selections





| EXTERIOR

SLEEK IN SCALE. LARGE IN AMBITIONS.

The XT5 is a dynamic expression of a bold design aesthetic. Graceful planes of steel meet powerful curves and lines to create a sleek crossover that suits your style.

OFFERED FEATURES: 20" WHEELS • ILLUMINATING DOOR HANDLES • SIGNATURE LED LIGHTING • INTEGRATED ROOF RAILS

Beautifully balanced design

A sculpted body achieves more than simply a striking look. By pushing the wheels aggressively to the four corners of the vehicle, Cadillac engineers have created generous space, as well as a supremely balanced structure for remarkable control and driving.

The accent is on utility

Integrated roof rails visually reinforce strong lines and, when paired with available cross rails, create another option for cargo.

Style, delivered full circle

Crafted with an innovative, full-forming process that saves weight while increasing strength, available 20" wheels allow the XT5 to stand apart on the road.

An illuminated welcome

Available lighting within the XT5 door handles offer a warm welcome when you approach the vehicle at night.

Superior illumination

The signature front and rear light systems dramatically frame sweeping curves and powerful edges. They also employ advanced LED technology to offer striking illumination.





| INTERIOR

WATCH DESIGN POSSIBILITIES UNFOLD

When you step inside the XT5, you will witness a wide dash melding cutting-edge technologies with timeless craftsmanship. Wood, leather and other materials have been chosen and fitted with a care reminiscent of fine tailoring. Rear seats with 40/20/40 folding flexibility and an ingenious, available Cargo Management System that can be concealed until it is needed result in beauty, comfort and utility.

OFFERED FEATURES: AUTHENTIC MATERIALS • CADILLAC USER EXPERIENCE WITH PHONE INTEGRATION • TRI-ZONE CLIMATE CONTROL • WIRELESS CHARGING • ONSTAR® 4G LTE AND BUILT-IN WI-FI® HOTSPOT • ENHANCED STEERING WHEEL • RECONFIGURABLE GAUGE CLUSTER • ULTRAVIEW® SUNROOF • ADJUSTABLE CARGO MANAGEMENT SYSTEM • 40/20/40 VERSATILITY • KEYLESS ACCESS • ADAPTIVE REMOTE START • AUTOMATIC PARKING ASSIST

More than at your fingertips

The Cadillac user experience¹ puts a suite of information and entertainment offerings at your command, including climate, audio and Collection, to easily browse, select and install apps. With the available Collection, you can download new select apps for your XT5 similar to a smartphone app store. Customize your content with music, audiobooks, weather apps and more (data plan rates may apply).

Your phone, even smarter

The Cadillac user experience¹ offers Phone Integration with Apple CarPlay™² compatibility and allows you to access your contacts, Apple Music™ and other information from your iPhone® with a touch of the screen, shown below. You can also access Siri,[®] so features are easily accessible to you or your front-seat passenger. Phone Integration also offers Android™ Auto² compatibility.

1. Cadillac user experience functionality varies by model. Full functionality requires compatible Bluetooth and smartphone. Some devices require USB connectivity. 2. Vehicle user interfaces are products of Apple and Google and their terms and privacy statements apply. Requires compatible smartphone and data plan rates apply. CarPlay is a trademark of Apple Inc.

Elegant ergonomics

The XT5 cabin is the result of decades of research and understanding how drivers drive and want to interact with controls, functions and features. The shape, placement and feel of every dial, switch and interface have been designed to maximize convenience, comfort and utility.

Your environment, your way

Standard with Platinum and Premium Luxury, the available Tri-Zone Climate Control allows the driver, front passenger and rear passengers to adjust the temperature to their choosing. Plus, warm up with heated rear seats.

A crafted cabin

With a hand-stitched steering wheel and dashboard, along with cut-and-sewn seating, each of the available interior combinations has been carefully curated. Uniquely colored leathers and custom stained woods are paired for a rich, yet understated feel. Wherever you are going, arrive in style.



Stay connected or entertained

Available OnStar 4G LTE and built-in Wi-Fi hotspot¹ allows you to connect up to seven devices at the same time, up to 50 feet away from your XT5. So your passengers can check email or watch their favorite entertainment.

¹ Requires a compatible mobile device, active OnStar service and data plan. 4G LTE service available in select markets. Visit onstar.com for coverage map, details and system limitations. Data plans provided by AT&T.

Comfort comes full circle

As you grip the steering wheel, you will notice how it is wrapped in premium leather. The standard wheel has power tilt and telescoping, while an available steering wheel delivers heat that warms to the touch in cold weather.

Customize your information

Select from one of two themes within the available 8" diagonal LCD reconfigurable gauge display that combine vehicle data with navigation, entertainment and stunning 3-D vehicle images.

Share the wonder

The available UltraView sunroof serves you and your passengers stunning view spans from both the front and rear seats. It is equipped with a power sunshade should the sun be too intense.



Smart space

A generously spaced cabin features a variety of helpful options, such as the available adjustable cargo fence that secures luggage and other items. An underfloor storage bin provides additional space and security.

¹ Cargo and load capacity limited by weight and distribution. ² Requires data plan, compatible vehicle and compatible device. Some features require factory-installed remote start, power locks, Tire Pressure Monitoring System or active OnStar service.

Open to possibilities

All three rear seats can be folded, individually, for 40/20/40 flexibility. When all are down, they add up to 63 cu-ft of space!¹

An effortless arrival

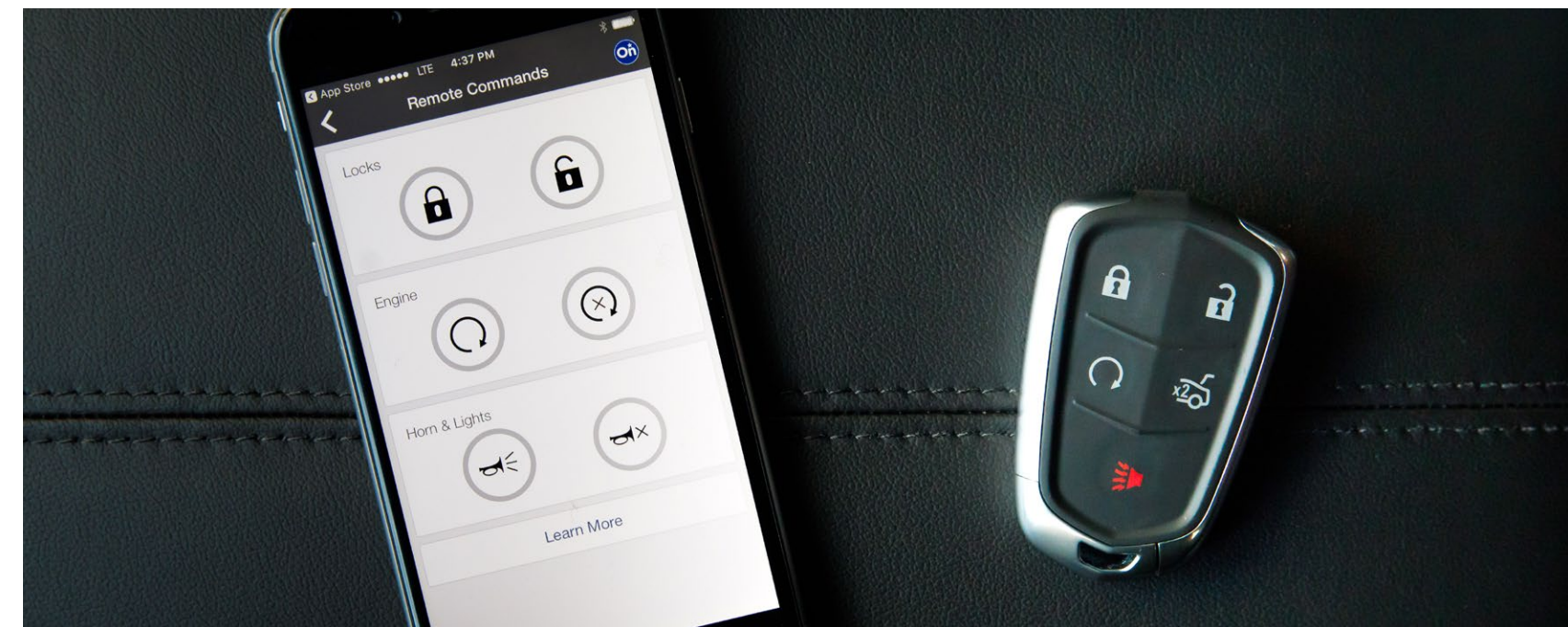
Whether it is a front, rear, parallel or perpendicular parking space, the available Automatic Parking Assist guides you to an appropriately sized spot and then helps steer into the space while you control the brakes and speed.

An entrance made easier

With Keyless Access, you can unlock the doors without removing the key fob from your pocket or handbag. It also works in reverse, automatically locking the doors when you exit the vehicle.

A smart and comfortable start

Integrated into your key fob, available Adaptive Remote Start engages the engine from up to 100 yards away. It can also sense outside temperature to activate the appropriate cabin climate control, as well as heat your steering wheel, when needed. Plus, with your myCadillac app² you can lock and unlock, remote start and get select vehicle information from anywhere you have reception.





| PLATINUM

OUR BEST MADE EVEN BETTER

From innovative technologies that can read every inch of the road, to comforts that enrich every moment of a drive, to potent details like polished chrome exhaust tips. The XT5 Platinum is a culmination of substance and style.

OFFERED FEATURES: PLATINUM GRILLE • ILLUMINATING SILL PLATES • HEAD-UP DISPLAY (HUD) • REAR CAMERA MIRROR • SURROUND VISION • HANDS-FREE LIFTGATE • SEMI-ANILINE HEATED AND VENTILATED SEATS • PERFORATED LEATHER • SIGNATURE CHEVRON ACCENT

A welcoming step

Available Illuminating Sill Plates offer an attractive display that also serve as the function of additional lighting when people enter or exit the vehicle.

Information front and center

A driver's attention is best focused on the road. That is why the available Head-Up Display (HUD) projects selected information, such as MPH, speed limit and RPM, onto the front windshield, allowing you to access that information without having to look away from the road.



A brilliant look back

A segment exclusive available Rear Camera Mirror can stream HD video through the rearview mirror (A). This less obstructed view offers the driver up to 300% more field of view than the conventional mirror, but can revert to the standard view (B) with just a toggle.



A. Enhanced view with streaming HD Digital Mirror



B. Traditional view with rearview mirror

A higher look at what surrounds

Available Surround Vision provides a bird's-eye view of the area immediately surrounding the vehicle when in low-speed Drive or Reverse. This view, projected on the Cadillac user experience screen, helps increase your awareness when parking.



Hands-full, hands-free

The power liftgate has an available hands-free feature that allows you to open and close the liftgate with a kicking motion under the left corner of the rear bumper when the Keyless Access fob is with you. And a memory height function allows you to program how high the gate will open, avoiding damage to the vehicle.

MAKE CONFIDENCE YOUR CONSTANT COMPANION

The XT5 is a 2017 IIHS Top Safety Pick when equipped with optional Driver Awareness Package. That means when you step into the XT5, you have technologies to help you watch the front, rear and sides, monitor the weather and automatically brake in emergency situations. These are just a few examples of the many remarkable and available innovative safety features.

OFFERED FEATURES: FRONT AND REAR PARK ASSIST • FRONT PEDESTRIAN BRAKING • RAINSENSE WIPERS • AUTO-DRY BRAKES • FORWARD COLLISION ALERT • REAR CROSS TRAFFIC ALERT • REAR VISION CAMERA • LANE KEEP ASSIST WITH LANE DEPARTURE WARNING • SAFETY ALERT SEAT • LANE CHANGE ALERT WITH SIDE BLIND ZONE ALERT • FORWARD AND REVERSE AUTOMATIC BRAKING • ADAPTIVE CRUISE CONTROL • INTELLIBEAM HEADLAMPS • SURROUND VISION



Surrounded by safety innovation

FRONT

Parking perfected

Available Front and Rear Park Assist systems sense stationary objects when you're parking, warning you if you come too close. When in Reverse or at very slow speeds in Drive, the Rear Vision Camera automatically displays a live image of the area behind or in front of you on the Cadillac user experience screen. Guidelines plot your intended trajectory, helping you see objects that might be in your path.

Help keep an eye on pedestrians

Front Pedestrian Braking, available as part of the Driver Awareness Package, uses a camera to scan the road ahead. If a pedestrian is detected, the system alerts the driver and, if necessary, applies the brakes to help avoid or reduce the severity of a collision.

An intelligent wiper

Available Rainsense Wipers automatically engage when rain is detected, adjusting their speed to the rain's intensity. Whenever wipers are activated, available Auto-Dry brakes automatically positions the brake pads closer to the rotors to help sweep away moisture and improve performance.

Truly forward thinking

Available Forward Collision Alert monitors traffic ahead, alerting you if a potential collision is imminent, while available Following Distance Indicator shows the following time to the detected vehicle ahead (in seconds) in the Driver Information Center (DIC).

REAR

Be alerted even in reverse

When backing out of a parking space, available Rear Cross Traffic Alert warns of oncoming cross traffic to either side of your vehicle.

Safety features are no substitute for the driver's responsibility to operate the vehicle in a safe manner. The driver should remain attentive to traffic, surroundings and road conditions at all times. Read the vehicle Owner's Manual for important feature limitations and information.

SIDE

Travel the straight and smart

Using a camera to sense lane boundaries, available Lane Keep Assist with Lane Departure Warning gently turns the steering wheel if the system anticipates the vehicle is leaving the lane unintentionally or without using your turn signal. Working in conjunction with the available Safety Alert Seat, available Lane Departure Warning sends a visual alert in the cluster and a warning pulse through the seat cushion when your vehicle crosses the lane marking.

All clear

Available Lane Change Alert with Side Blind Zone Alert surveys the area well beyond the side blind zone, and illuminates the side mirror warning icon to alert you of a rapidly approaching vehicle. Available Side Blind Zone Alert monitors your blind spots, so if a vehicle is in the adjacent lane it also illuminates the side mirror icon. In both features, if you've activated your turn signal, the icon on the side mirror will flash to alert you.

INSIDE

Gain precious time

Up to certain speeds, available Forward and Reverse Automatic Braking can sense forward and reverse collisions and automatically engage the brakes, helping you to reduce crash impact.

Maintain an intelligent space

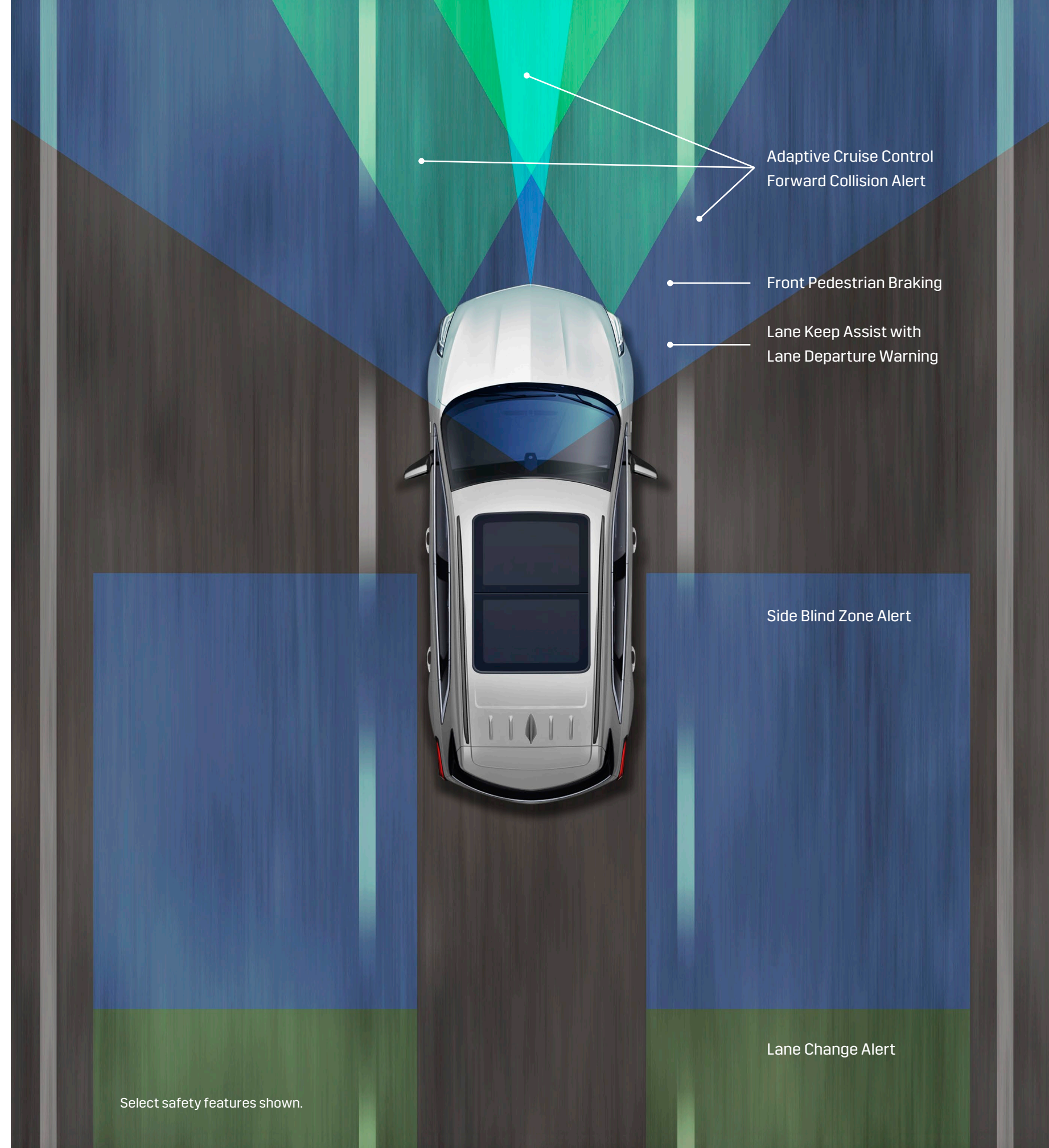
Available Adaptive Cruise Control employs radar technology to maintain a selected distance between you and the detected vehicle ahead.

Grabs your attention. Subtly.

Cadillac's patented available Safety Alert Seat sends a discreet pulse to the left, right or both sides of the driver's seat, indicating the direction of the threat—left, right, front or rear.

A higher look at what surrounds

Available Surround Vision provides a bird's-eye view of the area immediately surrounding the vehicle when in low-speed Drive or Reverse. This view, projected on the Cadillac user experience screen, helps increase your awareness when parking.



Adaptive Cruise Control
Forward Collision Alert

Front Pedestrian Braking

Lane Keep Assist with
Lane Departure Warning

Side Blind Zone Alert

Lane Change Alert

Select safety features shown.



| PERFORMANCE

WIELD POWER WISELY

You will immediately notice a feeling of confidence, responsiveness and awareness with available Real-Time Damping behind the wheel of the XT5. The transmission seamlessly employs eight gears to infinite advantage. The powerful engine activates or deactivates cylinders as performance and efficiency demand. And the available AWD system directs torque to the wheels that will use it best. The XT5 is an automobile that makes driving a singular delight.

OFFERED FEATURES: INNOVATIVE ALL-WHEEL DRIVE • ELECTRONIC PRECISION SHIFT • 8-SPEED TRANSMISSION • REAL-TIME DAMPING SUSPENSION • AUTO-DRY BRAKES • ACTIVE FUEL MANAGEMENT • 3.6L V6 ENGINE

A firm grip on innovation

Available All-Wheel Drive (AWD) delivers a superior driving experience. The available twin-clutch AWD system features a streamlined design that helps reduce noise intrusion into the passenger area while enhancing driver launch performance and cornering, especially in adverse weather.

Move seamlessly

An advanced 8-speed transmission has quick steps between gears for better performance and efficiency. It also takes advantage of Cadillac's Performance Algorithm Shifting to seamlessly select the best gear for quicker shifts and greater responsiveness.



A shift in precision

With the XT5, Electronic Precision Shift places you with more control. This push-button technology lets you move from Park to Drive more quickly, while reducing noise and vibration.

Read the road

Every two milliseconds, available Real-Time Damping adjusts the front struts and rear shock absorbers to road and driving conditions for a more precise ride.

Smart power

The 3.6L V6 engine delivers 310 hp and 271 lb-ft of torque. Statistics tell only part of this advanced power plant's exciting story. It is also equipped with intelligent technologies like Active Fuel Management and Cadillac's Auto Stop/Start feature. The former deactivates engine cylinders when less power is needed, the latter automatically stops and starts the engine when the vehicle is stopped in traffic. Both promote greater efficiency¹ and all-around driver satisfaction.

¹ EPA-estimated mpg for 3.6L V6 engine with 8-speed transmission: 19 city/26 hwy (FWD); 18 city/25 hwy (AWD)

Fueling efficiencies

To use fuel most intelligently, Active Fuel Management automatically and imperceptibly deactivates two of its engine's 6 cylinders when their power is not needed. When it is, all 6 cylinders are activated instantly and seamlessly.

Innovation that never stops

When the windshield wipers are activated, available Auto-Dry Brakes automatically position the brake pads closer to the rotors to help sweep away moisture and improve your braking performance.



STANDARD FEATURES

2018 XT5 Features

DRIVETRAIN

3.6L Direct-Injection V6 VVT Engine 310 hp and 271 lb-ft of torque with Automatic Stop/Start
Front-Wheel Drive
Transmission 8-speed automatic

CHASSIS AND SUSPENSION

Brakes 4-wheel vented disc with antilock braking system (ABS); featuring Auto-Dry, Hill Start, Ready Brake Alert and Brake Assist
Electronic Parking Brake
Steering Electric Power Steering (EPS) Assist
Suspension 4-Wheel Independent, short/long arm with coil-over strut and stabilizer bar, front; modified multi-link with coil-over shock absorber and stabilizer bar, rear

EXTERIOR

Door Handles Body color with chrome strip
Exhaust Rear fascia integrated with dual chrome-finish outlets
Fueling System Capless
Glass Deep-tinted on rear and tailgate windows
Grille Bright Galvano finish
Headlamps Projector beam tungsten halogen, with automatic on/off
LED taillamps and Center High-Mounted Stop Lamp (CHMSL)
LED Daytime Running Lamps
Mirrors Body color, outside heated, power-adjustable and manual-folding
Roof Rails Bright brushed aluminum
Spoiler Rear
Windshield Acoustic laminated
Wipers Front intermittent, rear intermittent with washer
Wheels 18" aluminum with Blade Silver painted finish (see page 39 for more details)

INTERIOR

Adaptive Remote Start
Air Filter Cabin
Antenna Roof-mounted
Audio System CD/MP3 player with two USB charge and playback ports¹ in the center console, two charge-only in back of center console and auxiliary input jack, Bluetooth^{®2} Hands-Free Calling and data service streaming with Natural Voice Recognition
Bose[®] 8-speaker premium audio system
Cadillac user experience³ Information and media control system with AM/FM stereo, HD Radio and 8" full-color diagonal LCD capacitive multi-touch screen, four USB ports¹ (see above), two auxiliary power outlets, auxiliary input jack, Natural Voice Recognition and Phone Integration capability with Apple CarPlay^{™4} and Android[™] Auto⁴
Climate Control Dual-zone automatic with individual settings for driver and front passenger
Compass Display
Console Front center floor console with shifter, integral armrest, storage and dual cupholders
Cruise Control Electronic, with set and resume speed
Door Locks Power programmable includes lockout protection and delayed locking, with rear child security
Driver Information Center With three-window configurable color display
Floor Mats Carpeted front and rear
Gauge Cluster 5.7" color display, includes driver personalization, warning messages and vehicle information
Glove Box Lockable
Horn Dual-note tone
Keyless Access Includes two remote transmitters enabling Push-Button Start
Liftgate Rear power with memory height
Mirror, Inside Rearview manual day/night
Park Assist Rear
Rear Seat Reminder⁵
Rear Vision Camera
Rear-Window Defogger
Seating

Five-passenger; Front bucket seats with 8-way power driver adjustment
Leatherette seating
Seat adjuster, front passenger, 6-way power
Second-row 40/20/40 with slide and recline, and cargo area fold-down release

SiriusXM Satellite Radio⁶ With three trial months

Steering Column Power tilt and telescoping

Steering Wheel Leather-wrapped 3-spoke, with fingertip controls for Cadillac user experience, audio, cruise and climate control systems

Universal Home Remote Includes garage door opener, 3-channel programmable

Wi-Fi[®] Hotspot Capability⁷ Includes three-month or three-gigabyte data trial, whichever comes first

Windows Power with express-up and -down and rear express-down

Wireless Charging⁸ Inductive charging system for portable devices

SAFETY AND SECURITY

Air Bags⁹ Driver and front passenger front-impact, driver side knee; Passenger Sensing System; driver and front passenger seat-mounted side-impact for thorax and pelvic protection; front-/second-row outboard head-curtain
OnStar 4G LTE With standard one-year Guidance Plan trial,¹⁰ includes Automatic Crash Response, Stolen Vehicle Assistance, Roadside Assistance, Turn-by-Turn Navigation, Advanced Diagnostics and more (trial excludes Hands-Free Calling minutes)
StabiliTrak[®] Electronic Stability Control System
Tire Inflation Kit
Tire Pressure Monitoring System
Traction Control Full-range, powertrain and brake modulated

AVAILABLE FEATURES

All-Wheel-Drive
Compact Spare Tire
Engine Block Heater

LUXURY

Enjoy 2018 XT5 Features + these enhancements:

Cargo Area Cargo Management System, adjustable cargo fence and retractable cargo shade
Lane Change Alert with Side Blind Zone Alert¹¹
Lighting Accent Light pipes in console
Memory Package With two presets for power driver's seat, outside mirrors, power tilt-and-telescoping steering column, and driver personalization features
Mirror, Inside Automatic-dimming rearview, with OnStar controls
Mirrors, Outside Heated, body-color, power-adjustable, power-folding with driver-side auto-dimming
Park Assist Front and Rear
Rear Cross Traffic Alert
Seating Leather seating surfaces, 8-way power-adjustable front passenger side, driver and front passenger power lumbar control, driver and front passenger heated
Steering Wheel Auto-Heated
UltraView[®] Sunroof Power, tilt-sliding, electric with express-open over front-row seating and power sunshade with 100% light blockage
Wipers Rainsense[™] front
Wheels 18" aluminum bright machined faced with Light Argent accents (see page 39 for more details)

AVAILABLE FEATURES

Advanced Security Package Includes locking steering column, door lock and latch shields, self-powered Theft-Deterrent Alarm System, vehicle inclination sensor, vehicle interior movement sensor and locking wheel lugs
All-Wheel Drive With driver mode select
Bose Centerpoint[®] Surround System With Active Noise Cancellation and 14 speakers
Cadillac user experience Information and Media Control System with Embedded Navigation¹² AM/FM stereo with embedded navigation, 8" diagonal color information display, four USB ports;¹ two auxiliary power outlets, auxiliary input jack, Natural Voice Recognition and Phone Integration capability with Apple CarPlay⁴ and Android Auto⁴
Climate Control Tri-Zone Automatic with individual climate settings for driver, right-front passenger and rear passengers
Compact Spare Tire
Driver Awareness Package Includes Safety Alert Seat, Forward Collision Alert, Following Distance Indicator, Lane Keep Assist with Lane Departure Warning, Front Pedestrian Braking, IntelliBeam headlamps and Front Automatic Braking
Engine Block Heater
Headlamps LED, with front park and cornering lamps
Rear Seating Heated outboard positions
Trailerling Package Includes hitch and wiring harness

PREMIUM LUXURY

Enjoy Luxury Features + these enhancements:

Bose Centerpoint[®] Surround System With Active Noise Cancellation and 14 speakers
Cadillac user experience Information and Media Control Climate Control Tri-Zone Automatic with individual climate settings for driver, right-front passenger and rear passengers
System with Embedded Navigation¹² AM/FM stereo with embedded navigation, 8" diagonal color information display, four USB ports;¹ two auxiliary power outlets, auxiliary input jack, Natural Voice Recognition and Phone Integration capability with Apple CarPlay⁴ and Android Auto⁴
Driver Awareness Package Includes Safety Alert Seat, Forward Collision Alert, Following Distance Indicator, Lane Keep Assist with Lane Departure Warning, Front Pedestrian Braking, IntelliBeam headlamps and Front Automatic Braking
Headlamps LED, IntelliBeam
Lighting Accent Interior, in console and doors
Seating
Vented driver and front passenger
Heated, rear outboard positions
Suspension Performance, driver-selectable modes
Wheels 20" aluminum with Sterling Silver painted finish (see page 39 for more details)

AVAILABLE FEATURES

Advanced Security Package Includes locking steering column, door lock and latch shields, self-powered Theft-Deterrent Alarm System, vehicle inclination sensor, vehicle interior movement sensor and locking wheel lugs
All-Wheel Drive With driver mode select
Compact Spare Tire
Driver Assist Package Includes Adaptive Cruise Control, Automatic Safety Belt Tightening, Automatic Parking Assist, Automatic Collision Braking and Forward and Reverse Automatic Braking
Engine Block Heater
Trailerling Package Includes hitch and wiring harness
Wheels 20" aluminum Ultrabright machined face with Midnight Silver accents (see page39 for more details)

PLATINUM

Enjoy Premium Luxury Features + these enhancements:

Advanced Security Package Includes locking steering column, door lock and latch shields, self-powered Theft-Deterrent Alarm System, vehicle inclination sensor, vehicle interior movement sensor and locking wheel lugs
All-Wheel Drive With driver mode select
Console Rear Floor with controls for audio, HVAC and heated rear seats
Floor Mats Premium carpeted front and rear
Gauge Cluster 8" color DIC, includes driver personalization, warning messages and vehicle information
Grille Unique Galvano
Head-Up Display (HUD)
Liftgate Power, programmable, hands-free open and close
Lighting Accent Light pipes in console, doors, and sill plates
Rear Camera Mirror With lens cleaning feature
Seating Semi-Aniline full-leather with chevron perforated inserts and leather-appointed trim
Surround Vision Bird's-eye view of vehicle
Wheels 20" aluminum fully polished finish (see page 39 for more details)

AVAILABLE FEATURES

Compact Spare Tire
Driver Assist Package Includes Adaptive Cruise Control, Automatic Safety Belt Tightening, Automatic Parking Assist, Automatic Collision Braking and Forward and Reverse Automatic Braking
Engine Block Heater
Trailerling Package Includes hitch and wiring harness

1. Not compatible with all devices. **2.** Go to my.cadillac.com to find out which phones are compatible with the vehicle. **3.** Cadillac user experience functionality varies by model. Full functionality requires compatible Bluetooth and smartphone. Some devices require USB connectivity. **4.** Vehicle user interfaces are products of Apple and Google and their terms and privacy statements apply. Requires compatible smartphone and data plan rates apply. **5.** Does not detect people or items. Always check rear seat before exiting. See vehicle owner's manual for details. **6.** If you subscribe after your trial period, *subscriptions are continuous until you call SiriusXM to cancel.* See SiriusXM Customer Agreement for complete terms at www.siriusxm.com. Other fees and taxes will apply. All fees and programming subject to change. For more information about NavTraffic, visit siriusxm.com/navtraffic. For more information about Travel Link, visit siriusxm.com/travellink. XM satellite service is available only to those in the 48 contiguous U.S.A. and D.C. Sirius, XM and all related marks and logos are trademarks of Sirius XM Radio Inc. **7.** Requires a compatible mobile device, active OnStar service and data plan. 4G LTE service available in select markets. Visit onstar.com for coverage map, details and system limitations. Data plans provided by AT&T. **8.** The system wirelessly charges one PMA- or Qi-compatible mobile device. Some phones have built-in wireless charging technology and others require a special adaptor/back cover. For a list of GM wireless charging compatible mobile devices go to cadillac.com/wireless. If your device is not on this list, please consult your carrier. **9.** Always use safety belts and child restraints. Children are safer when properly secured in a rear seat in the appropriate child restraint. See the Owner's Manual for more information. **10.** Visit onstar.com for coverage map, details and system limitations. OnStar acts as a link to existing emergency service providers. **11.** Before making a lane change, always check the Side Blind Zone Alert display and the side and inside rear mirrors, look over your shoulder for vehicles and hazards, and activate the turn signal. **12.** Map coverage available in the United States, U.S. Virgin Islands, Puerto Rico and Canada.

OWNER BENEFITS

Our owners deserve it all. That's why 2018 vehicles are backed by a comprehensive suite of owner benefits. To learn more, visit: cadillac.com/XT5ownerbenefits

ONSTAR

With available OnStar,¹ you can get immediate help, outsmart and avoid vehicle theft, reach destinations, stay connected, even manage your vehicle's health. To learn more, visit: cadillac.com/onstar

ABOUT THIS CATALOG

We have tried to make this catalog comprehensive and factual. We reserve the right, however, to make changes at any time, without notice, in prices, colors, materials, equipment, specifications, models and availability. Specifications, dimensions, measurements, ratings and other numbers in this catalog and other printed materials provided at the dealership or affixed to vehicles are approximates based upon design and engineering drawings and prototypes and laboratory tests. Your vehicle may differ due to variations in manufacture and equipment. Since some information may have been updated since the time of printing, please check with your Cadillac dealer for complete details. Any variations in colors shown are due to reproduction variation in the printing process. Cadillac reserves the right to lengthen or shorten the model year for any product for any reason, or start and end model years at different times. Note: Some photographs in this catalog show vehicles with optional equipment.

ENGINES

Cadillac products are equipped with engines produced by GM Powertrain or suppliers to GM worldwide. The engines in Cadillac products may also be used in other GM makes or models.

TIRE SEALANT AND COMPRESSOR KIT

If your vehicle has a tire sealant and compressor kit, it uses a liquid tire sealant to temporarily seal up to a ¼-inch puncture in the tread area of the tire. After using the inflator kit, it is recommended to take the tire to an authorized dealer for inspection and repair as soon as possible but at least within 100 miles of driving. The tire sealant cannot seal and inflate sidewall damage, punctures larger than ¼-inch or a tire that has unseated from the wheel. The sealant can only be used on one tire, one time before its expiration date.

ASSEMBLY

Cadillac vehicles and their components are assembled or produced by different operating units of General Motors, its subsidiaries or suppliers to GM worldwide. We sometimes find it necessary to produce Cadillac vehicles with different or differently sourced components than originally scheduled. Since some options may be unavailable when your vehicle is assembled, we suggest that you verify that your vehicle includes the equipment you ordered or, if there are changes, that they are acceptable to you.

PREMIUM CARE MAINTENANCE

The Cadillac Premium Care Maintenance program² covers routine oil changes, tire rotations, certain air filter replacements and a thorough multi-point vehicle inspection for 3 years or 36,000 miles whichever comes first. See your dealer for details.

UPDATED SERVICE INFORMATION

Cadillac dealers receive useful service bulletins about Cadillac products. You may purchase them from Helm Incorporated by calling 1-800-782-4356 or by visiting www.helminc.com.

NEW VEHICLE LIMITED WARRANTY

World-class coverage comes standard on every 2018 Cadillac. This warranty is for Cadillac vehicles registered in the U.S.A. See your Cadillac dealer for terms and conditions.

COVERED FOR 6 YEARS/70,000 MILES (WHICHEVER COMES FIRST)

Powertrain limited warranty with no deductible, Roadside Assistance Program³ and Courtesy Transportation Program³

COVERED FOR 4 YEARS/50,000 MILES (WHICHEVER COMES FIRST)

Bumper-to-bumper coverage. Tires—defects in material and workmanship; repairs made to correct any vehicle defect; corrosion on body sheet metal panels.

RUST-THROUGH COVERAGE

Cadillac vehicles are designed and built to resist corrosion and rust-through corrosion. Any body sheet metal that rusts through (in the form of an actual hole in the sheet metal) is covered for six years and unlimited mileage. Cosmetic or surface corrosion—resulting from stone chips or scratches in the paint, for example—is not included in the rust-through coverage. Application of additional rust-inhibiting materials is not required under the rust-through coverage and none is recommended. See your Cadillac dealer for terms of this limited warranty.

FLEET ORDERS

Some standard content may be deleted with fleet orders. See dealer for details.

¹. Visit onstar.com for coverage map, details and system limitations. Services vary by model. OnStar acts as a link to existing emergency service providers. Not all vehicles may transmit all crash data. ². Standard on 2017 and newer Cadillac vehicles, with the exception of the 2017 Cadillac XT5. The 2017 Cadillac XT5 and all 2011 to 2016 Cadillac vehicles are covered for 4 years or 50,000 miles, whichever comes first. See dealer for details. ³. Roadside Assistance Program and Courtesy Transportation Program are not part of the New Vehicle Limited Warranty. A separate booklet titled, "Warranty and Owner Assistance Information" furnished with each new vehicle provides detailed warranty coverage information. ⁴. Cargo and load capacity limited by weight and distribution.

©2018 General Motors. All rights reserved. GM, the GM emblem, Cadillac, the Cadillac Crest, OnStar, the OnStar emblem and the slogans, emblems, vehicle model names, vehicle body designs and other marks appearing in this catalog are the trademarks and/or service marks of General Motors, its subsidiaries, affiliates or licensors. Apple, iPhone and Apple CarPlay are trademarks of Apple Inc., registered in the U.S. and other countries. Android is a trademark of Google, Inc. Brembo is a registered trademark of Brembo. Bose and AudioPilot are registered trademarks of Bose Corporation in the U.S. and other countries. SiriusXM Satellite Radio is a registered trademark of SiriusXM Radio Inc. Blu-ray is a trademark of Blu-ray Disc Association. Wi-Fi is a registered trademark of Wi-Fi Alliance®

WHEELS



18" ALUMINUM WITH BLADE SILVER PAINTED FINISH

Standard on XT5



18" ALUMINUM WITH BRIGHT MACHINED FINISH AND LIGHT ARGENT ACCENTS

Standard on XT5 Luxury



20" ALUMINUM WITH STERLING SILVER PAINTED FINISH

Standard on XT5 Premium Luxury



20" ALUMINUM WITH ULTRABRIGHT MACHINED FINISH WITH MIDNIGHT SILVER ACCENTS

Available on XT5 Premium Luxury



20" ALUMINUM FULLY POLISHED FINISH

Standard on XT5 Platinum

VEHICLE DIMENSIONS

SELECT XT5 DIMENSIONS All measurements in inches.

EXTERIOR

Wheelbase	112.5
Overall Length	189.5
Overall Width	75.0
Overall Height	66.0
Front Track Width	64.4
Rear Track Width	64.4

INTERIOR

	FRONT	REAR
Leg Room	41.2	39.5
Head Room	38.4	36.0
Hip Room	56.0	54.7
Shoulder Room	58.3	56.2

SELECT XT5 CAPACITIES

Fuel (gal., approx.)	
FWD	19.4
AWD	21.7
Cargo Volume (cu ft) ⁴	
Seat Up	30.0
Seat Down	63.0
Seating Capacity	5

INTERIOR COMBINATIONS

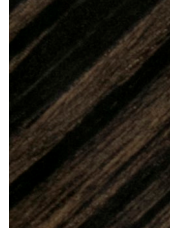
SAHARA BEIGE
LEATHERETTE SEATING SURFACES



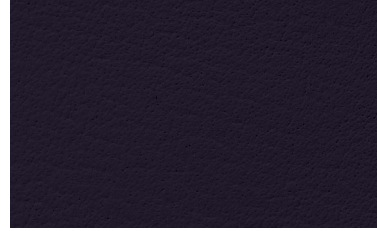
JET BLACK ACCENTS



HIGH-GLOSS OKAPI STRIPE WOOD



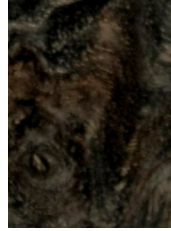
CARBON PLUM
FULL-LEATHER SEATS WITH MINI-PERFORATED INSERTS



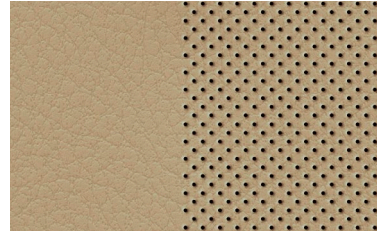
JET BLACK ACCENTS



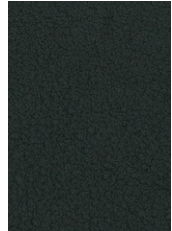
BLACK OLIVE ASH BURL WOOD



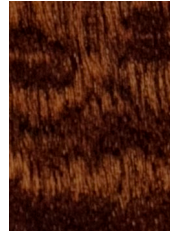
SAHARA BEIGE
LEATHER SEATING SURFACES WITH MINI-PERFORATED INSERTS



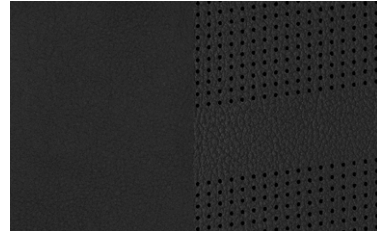
JET BLACK ACCENTS



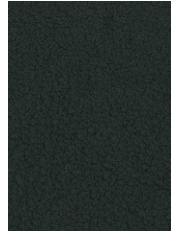
HIGH-GLOSS SAPELE WOOD



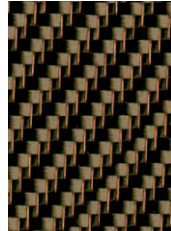
JET BLACK
SEMI-ANILINE FULL-LEATHER SEATS WITH CHEVRON PERFORATED INSERTS



JET BLACK ACCENTS



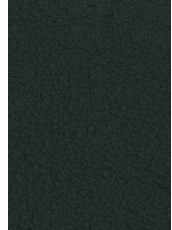
BRONZE CARBON FIBER



JET BLACK
LEATHER SEATING SURFACES WITH MINI-PERFORATED INSERTS



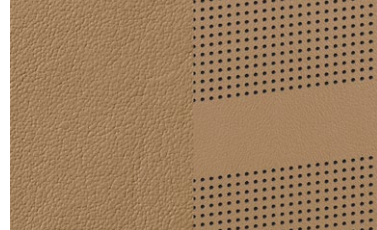
JET BLACK ACCENTS



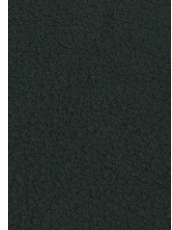
LUNAR BRUSHED ALUMINUM



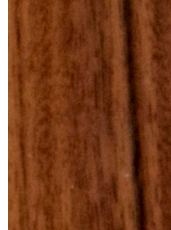
MAPLE SUGAR
SEMI-ANILINE FULL-LEATHER SEATS WITH CHEVRON PERFORATED INSERTS



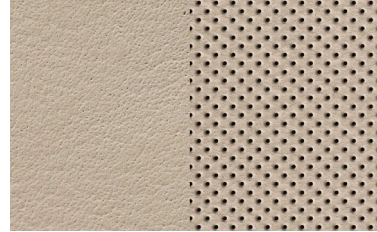
JET BLACK ACCENTS



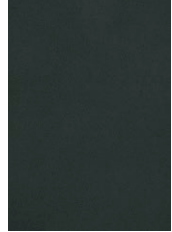
SATIN ROSEWOOD WOOD



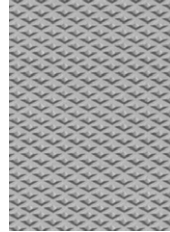
CIRRUS
LEATHER SEATING SURFACES WITH MINI-PERFORATED INSERTS



DARK TITANIUM ACCENTS



DIAMOND-CUT ALUMINUM



EXTERIOR COLORS

RADIANT SILVER METALLIC



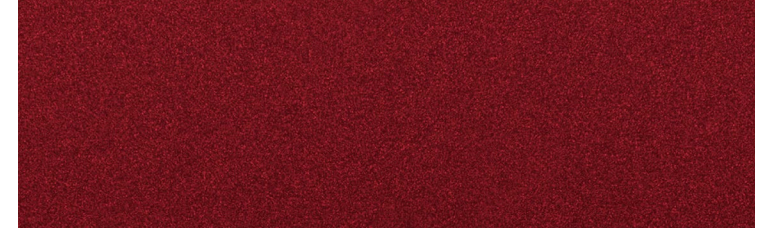
CRYSTAL WHITE TRICOAT¹



STELLAR BLACK METALLIC²



RED PASSION TINTCOAT¹



DARK GRANITE METALLIC²



HARBOR BLUE METALLIC²



DEEP AMETHYST METALLIC²



BRONZE DUNE METALLIC²



¹. Available at extra cost. ². Available at extra cost. No additional cost on Platinum.

CADILLAC.COM

