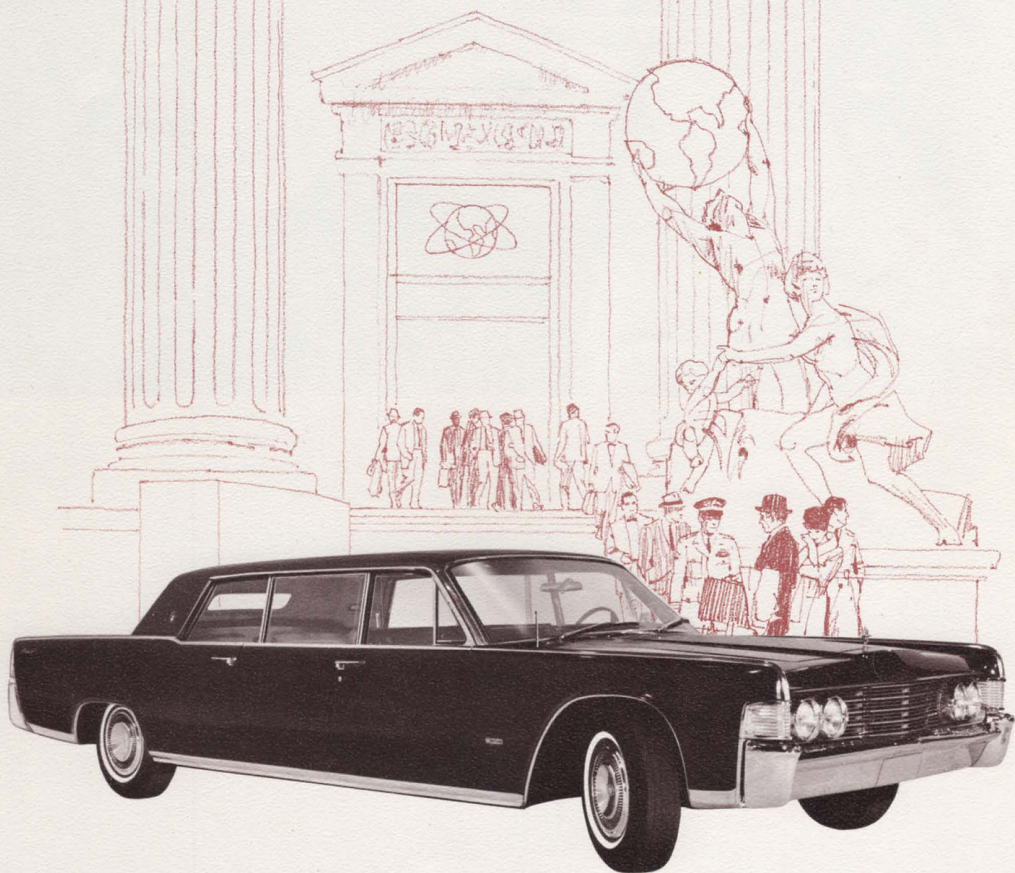
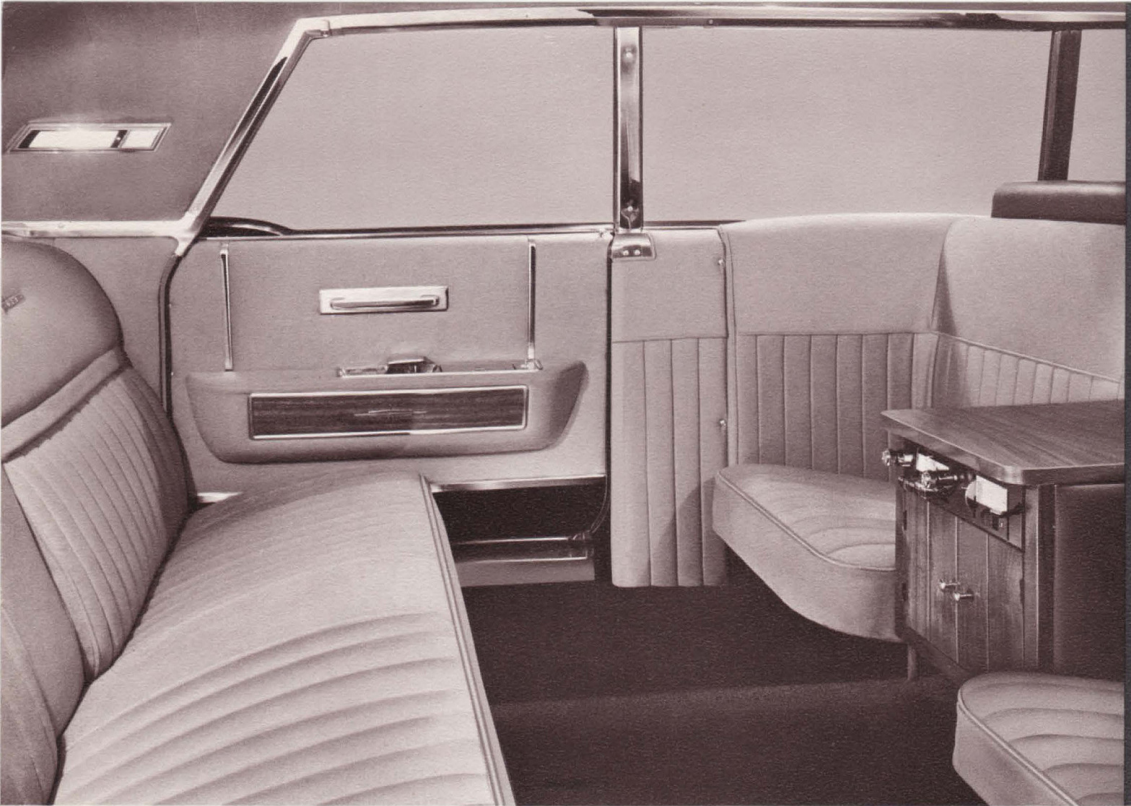


THE 1965  
EXECUTIVE LIMOUSINE



*...THE ULTIMATE EXPRESSION OF CONTINENTAL ELEGANCE.*

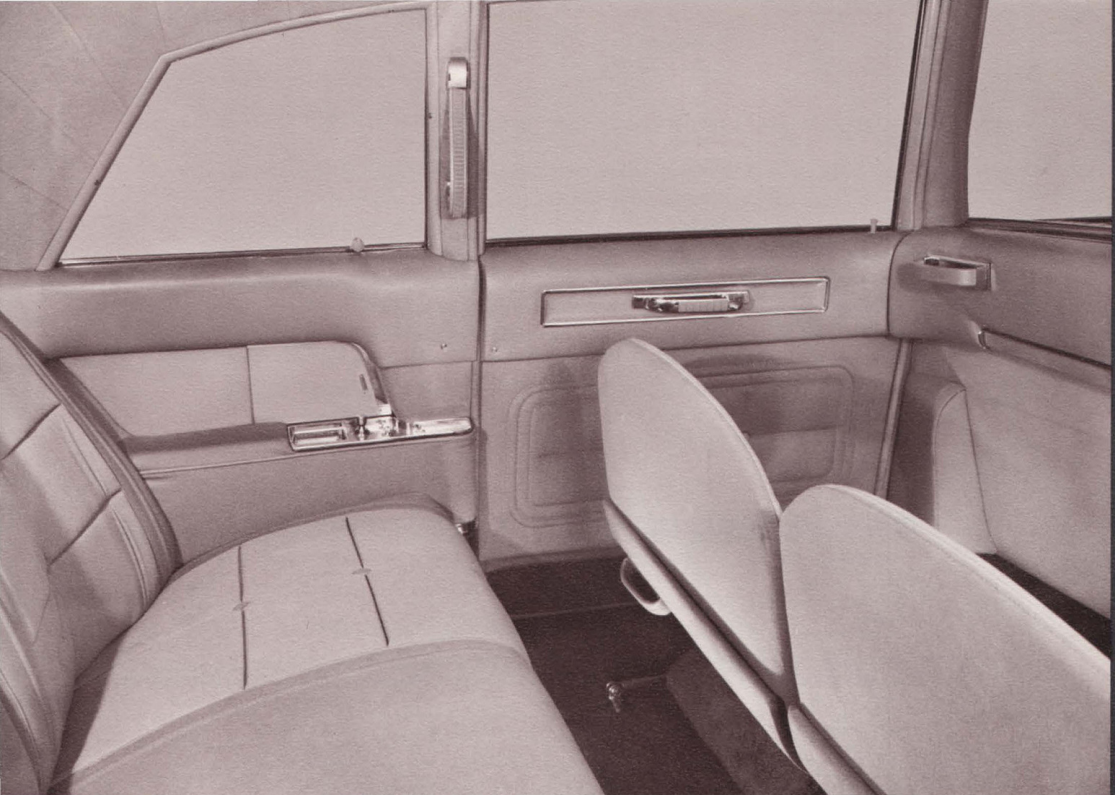


ENTER THE CONTEMPORARY  
WORLD OF LUXURIOUS  
AUTOMOTIVE EXCELLENCE



... UNMISTAKABLY  
CONTINENTAL  
WITH  
CUSTOMIZED CRAFTSMANSHIP

Swing wide the Executive Limousine's exclusive center-opening rear compartment door with its tastefully inset courtesy light that illuminates the compartment entrance. Then step easily, gracefully, into the world's most spacious, most comfortable, most fashionably fitted limousine. From the deep plushness of its mouton carpeting to its finely tailored wool broadcloth headliner, you realize immediately the Executive interior is impeccably handcrafted to please the most discriminating taste.



**COMPARE THE  
LINCOLN  
CONTINENTAL  
EXECUTIVE  
LIMOUSINE  
WITH THE  
CADILLAC  
FLEETWOOD  
SEVENTY-FIVE**

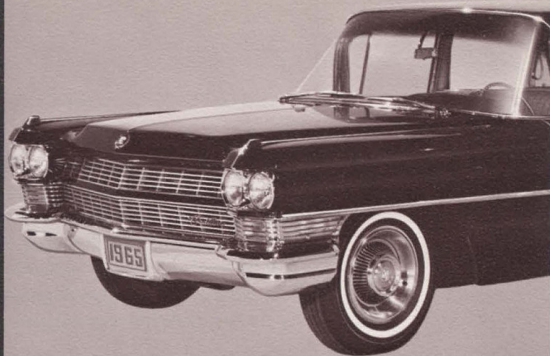
In the Cadillac rear compartment, pull-out jump seats serve for companion seating. With jump seats down, room between the rear and jump seats is restricted to 8.3 inches. The Executive Limousine interior, with permanently positioned guest seats, provides 20.4 inches of room between the rear and guest seats.

One of the benefits resulting from the Executive Limousine's wheelbase advantage, 160.0 inches against 149.8 inches for Cadillac, is the greater spaciousness of the Executive suite.

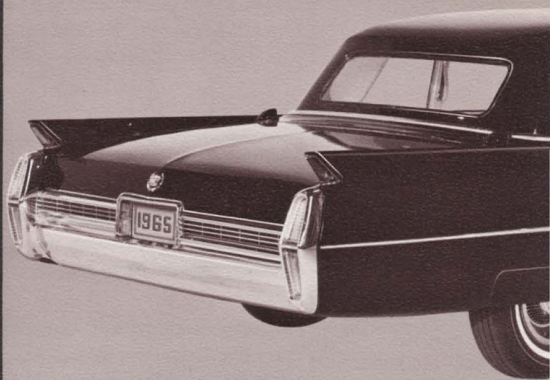
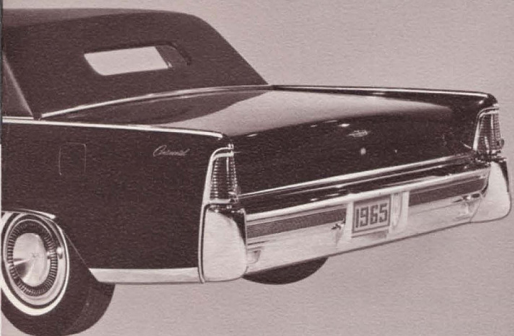
The Executive suite provides more rear compartment room for maximum comfort and convenience.

The Cadillac limousine has conventional sedan rear window and rear roof pillar design. The Executive Limousine's opera rear window combined with wider rear roof pillars assures maximum rear compartment privacy.

Features standard in the Executive Limousine which are unavailable or optional at extra cost on the Cadillac limousine include: opera rear window, black padded vinyl covered roof, power vent windows, power door locks, power front disc brakes, AM radio in front compartment, rear compartment AM/FM radio in walnut cabinet console, power antenna, mouton carpeting, conversational Executive suite design with permanent guest seats, and an umbrella harnessed below the front seat.



FROM ANY VIEWPOINT . . .



THE CONTINENTAL EXECUTIVE  
LIMOUSINE BLENDS MORE  
FASHIONABLY INTO THE  
CURRENT AMERICAN SCENE

The Cadillac retains a limousine exterior reminiscent of former models with such features as a wraparound windshield, rear fins and even last year's grille.

The Continental Executive Limousine is newly designed to offer discerning buyers the ultimate in fashionable styling and engineering excellence.

## AMONG AMERICAN LIMOUSINES TODAY . . .

Only the Lincoln Continental offers a unique executive suite design with permanently positioned rear facing guest seats creating an ideal conversation or conference area. Between the guest seats is a handsome, hand-rubbed walnut cabinet with transistorized AM/FM radio. The cabinet's hardwood surface serves as an ideal desktop. Side pillar reading lamps illuminate the Executive suite interior for further personal convenience.

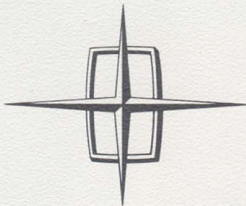
The Executive Limousine is a handcrafted conversion of the Lincoln Continental sedan by Lehmann-Peterson Inc., custom coach builders. It is the ultimate expression of Continental elegance.

## FOR PASSENGER COMFORT AND CONVENIENCE . . . VIRTUALLY EVERY AUTOMOTIVE ASSIST . . . AT THE DRIVER'S COMMAND

As you would expect, among all American limousines, the Executive provides the most complete array of luxury appointments as standard equipment.

In addition to automatic transmission, power steering, and power windows it has such features as power vent windows, power door locks and power radio antenna. Exclusive among American limousines, self-adjusting power front disc brakes that virtually eliminate brake fade or side-pull are also standard. Harnessed beneath the chauffeur's power seat, there is even an umbrella to assist in escorting passengers to and from the limousine in inclement weather.

For further comfort and convenience, exclusive options for the Executive Limousine include separate rear compartment air conditioning, a chauffeur divider window and such custom equipment as television, beverage compartment, telephone compartment and dictating machine.



## UNQUESTIONABLY AMERICA'S MOST LUXURIOUS MOTORCAR

### . . . THE 1965 LINCOLN CONTINENTAL EXECUTIVE LIMOUSINE

In the automotive industry today, limousine sales represent the most select of all markets. In the United States, there are currently about 12,000 chauffeur-driven limousines individually or company owned. The entry of the Lincoln Continental Executive Limousine now offers buyers an opportunity to purchase a handcrafted limousine designed for American taste standards. This level of luxury and elegance is unequalled even by Rolls Royce or Mercedes Benz which are priced up to ten thousand dollars more.

Presented below is a comparison of key specifications for the major entries in the select limousine market.

	CONTINENTAL EXECUTIVE	CADILLAC SEVENTY-FIVE	ROLLS ROYCE PHANTOM V	MERCEDES-BENZ GRAND MERCEDES
<b>EXTERIOR</b>				
Wheelbase	160.0"	149.8"	145.9"	153.3"
Overall Length	250.3"	243.8"	216.0"	246.0"
Width	78.6"	79.9"	74.0"	76.8"
<b>INTERIOR—REAR</b>				
Head Room	38.4"	38.8"	34.0"	34.9"
Shoulder Room	59.4"	58.8"	53.0"	N.A.
Hip Room	62.4"	59.7"	56.5"	60.4"
Distance between rear seat and rear companion seat	20.4"	8.3***	16.0"	20.7"
<b>INTERIOR—FRONT</b>				
Head Room	39.0"	40.6"	37.0"	38.4"
Leg Room	39.6"	40.1"	N.A.	N.A.
Shoulder Room	59.3"	60.4"	N.A.	N.A.
Hip Room	62.3"	65.8"	49.0"	61.8"
<b>ENGINE</b>				
Cubic inch displacement	430	429	380	386

\*\*Estimated

#### THE EXECUTIVE LIMOUSINE IS WARRANTED BY FORD MOTOR COMPANY IN THE SAME MANNER AS THE 1965 LINCOLN CONTINENTAL SEDAN AND CONVERTIBLE.\*

\*There is no warranty, express or implied, made by either Ford Motor Company or the selling dealer on new Lincoln Continental vehicles except the following direct Company vehicle warranty. Ford Motor Company warrants to the owner each part of this Lincoln Continental vehicle to be free under normal use and service from defects in material and workmanship for a period of 24 months from the date of delivery to the original retail purchaser or until it has been driven for 24,000 miles, whichever comes first. This warranty shall be fulfilled by the selling dealer (or if the owner of the vehicle is traveling or has become a resident of a different locality, by any authorized Lincoln Continental dealer) replacing or repairing at his place of business, free of charge including related labor, any such defective part.

This warranty shall not apply to (I) tires or tubes (appropriate adjustments for them being provided by their manufacturers), or (II) to normal maintenance services (such as engine tune-up, fuel system cleaning and wheel, brake and clutch adjustments), or (III) to normal replacement of service items (such as filters, spark plugs, ignition points, wiper blades and brake or clutch linings), or (IV) to deterioration of soft trim and appearance items due to normal use or exposure. This warranty is expressly IN LIEU OF any other express or implied warranty, including any implied WARRANTY OF MERCHANTABILITY OR FITNESS, and of any other obligation on the part of the Company or the selling dealer.

Product and Sales Training Department, Lincoln-Mercury Division, *Ford Motor Company*.



1965

*Lincoln Continental*  
EXECUTIVE LIMOUSINE



Specifications  
and  
Prices



*Lehmann-Peterson, Inc.*  
... Coachbuilders ...

2710 N. SAWYER AVENUE  
CHICAGO, ILLINOIS 60647

## 1965 PRICES

### BASE EXECUTIVE LIMOUSINE

	<i>Suggested Retail</i>
Continental Sedan .....	<b>\$ 6,292.00</b>
Conversion Kit (Hvy. Duty Components).....	<b>86.50</b>
Executive Limousine Conversion.....	<b><u>8,775.00</u></b>
<b>TOTAL</b>	<b><u><u>\$15,153.50</u></u></b>

### PLUS TYPICAL FACTORY OPTIONS

Front Compartment Air Conditioner* .....	<b>\$ 504.60</b>
Tinted Glass* .....	<b>53.65</b>
Wood-tone Applique .....	<b>N/C</b>
Emergency Flasher .....	<b>12.80</b>
Leather Trim .....	<b>100.00</b>
Automatic Headlamp Dimmer .....	<b>45.60</b>
Directed-Power Differential .....	<b>57.50</b>

### LEHMANN-PETERSON OPTIONAL EQUIPMENT

Rear Compartment Air Conditioning.....	<b>350.00</b>
Chauffeur Compartment Divider Window.....	<b>250.00</b>
Sony Television with built-in antenna.....	<b>295.00</b>
Companion Seat Foot Rest Pads.....	<b>54.00</b>
Beverage Compartment .....	<b>200.00</b>
All Leather Interior.....	<b>200.00</b>

\*Front compartment air conditioner and tinted glass are mandatory with rear compartment air conditioning.

*Separate quotations given by  
Lehmann-Peterson on special request options.*

## MAJOR SPECIFICATIONS

### Exterior

Wheelbase .....	160.0"
Over-all Length .....	250.3"
Over-all Width .....	78.6"
Over-all Height .....	54.5"
Tread, Front .....	62.1"
Tread, Rear .....	61.0"
Curb Weight (w/o Air Cond.).....	5,664 lbs.
Curb Weight (w/Air Cond.) .....	5,791 lbs.

\*Front seat in driver position.

### Interior

Front Head Room.....	39.0"*
Front Leg Room.....	41.1"
Front Shoulder Room.....	59.3"
Front Hip Room.....	62.3"
Rear Head Room.....	38.4"
Rear Shoulder Room.....	59.4"
Rear Hip Room.....	62.4"
Distance between rear seat and companion seat .....	23.0"
Rear Compart Table...Width	13.5"
Depth	15.5", Height 12.5"

### STANDARD EQUIPMENT

- All Continental Standard Equipment (Except Power Front Seat is 2-Way)
- Two Rearward-Facing Companion Seats
- Black Padded Vinyl Covered Roof
- Opera Rear Window
- Mouton Carpeting in Rear Compartment
- Walnut Cabinet
- Separate AM/FM Radio for Rear Compartment
- Divider Between Front and Rear Compartments
- Luggage Compartment Finished in Loop Design Carpeting
- Umbrella Harnessed Below Front Seat

### Colors

Black Satin  
Charcoal Frost  
Royal Maroon  
Madison Grey  
Nocturne Blue

### Trim

Broadcloth and Leather only are available in colors compatible with designated exterior colors.



## MAJOR SPECIFICATIONS

Feature	Value	Feature	Value
Wheelbase	1000"	Front Head Room	38.0"
Over-all length	2100"	Front Leg Room	41.1"
Over-all width	38.5"	Front Shoulder Room	38.5"
Over-all height	64.5"	Front Hip Room	33.0"
Front front	40.0"	Front Heel Room	38.5"
Front seat	42.5"	Over Shoulder Room	38.5"
Over height	64.5"	Over Hip Room	43.4"
Over all (total)	1000 lbs.	Clearance between seat and tank	33.0"
Over weight	5750 lbs.	Over Capacity (total)	1000 lbs.
		Over Capacity (total)	1000 lbs.



### STANDARD EQUIPMENT

All standard equipment is front seat (2-Way)  
The front-end Component is  
also front (1st) Component  
Front seat window  
Motor (operating in rear Component)  
When closed  
Separate A/V (1) seats for rear Component  
Double between front and rear Component  
Average Component (total) in top Design Component  
Indicate placement below front seat

<p>Front seat Control Panel Front Mirror Motor (1st) Rear Seat</p>	<p>Front seat Control Panel Front Mirror Motor (1st) Rear Seat</p>
--	--