

**19
68**

**MERCURY
STATION
WAGONS**

**BETTER IDEAS
IN STATION WAGONS
... ALL WITH THE
FINE CAR TOUCH**

Colony Park · Commuter · Montego MX

MONTEGO MX—newest arrival on the station wagon scene and newest kind of Mercury since Cougar! With the looks, the feel, the ride of a fine car. Young-hearted . . . its body side moldings warmed with simulated walnut, with bright trim just about everywhere. Young-muscled . . . with a high-torque Cyclone 302 V-8 or thrifty 200 "6" as standard engine. Inside are fine-car touches by the dozen: a spacious all-vinyl interior, squeeze-type door handles, thick foam-padded seats, color-keyed carpeting, instrument panel inserts of wood-grained vinyl—many more. Mercury's famous Dual-Action tailgate is optional if you choose. For cargo hauling or social calling—Montego MX, fresh young way to enjoy wagon living at its finest!

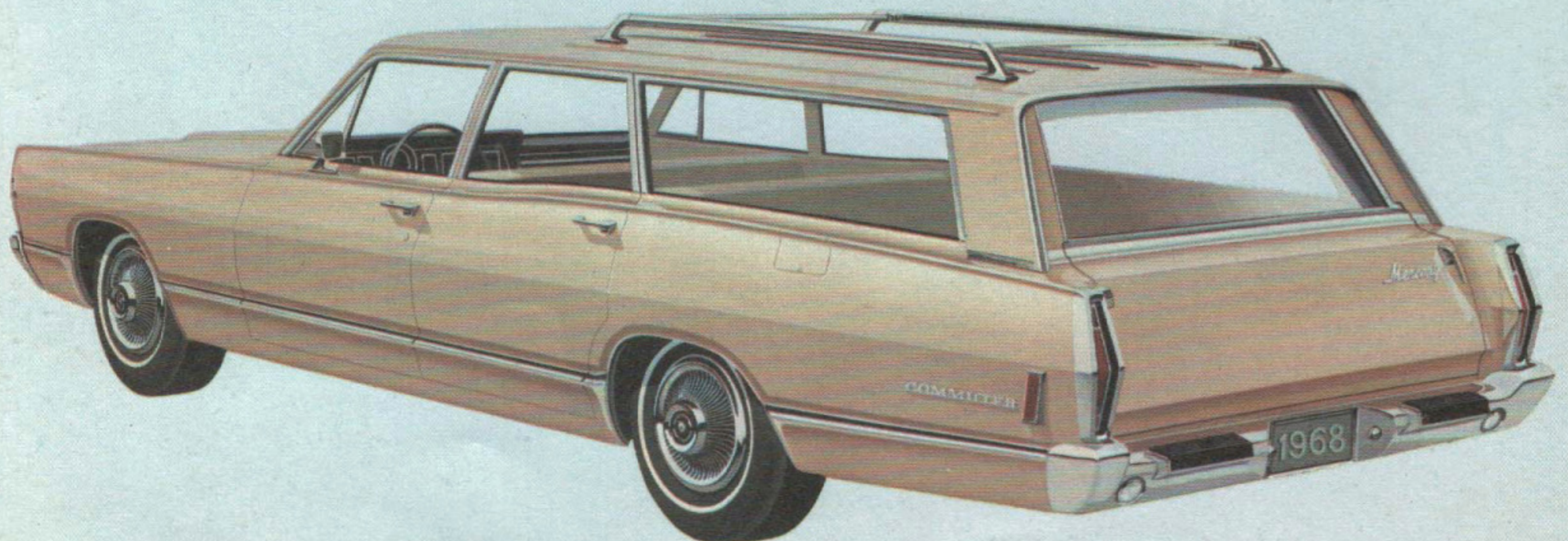
COMMUTER—big, roomy station wagon whose good looks carry extra weight, and as versatile as it is stylish! That Dual-Action tailgate, for example, is a better idea you'll applaud every time you drop it down for cargo or swing it door-like for kids. Another fine-car touch: Channel-Aire rear roof pillars which flow air across the rear window to help keep it clear of dust and snow. Standard engine is the Marauder 390 V-8 with 3-speed manual transmission; optional power ranges up to the Super Marauder 428 V-8. Adding to its smooth, sedan-quiet ride are husky 8.45x15 tires on 6-inch rims. Also adding to your travel pleasure will be foam-padded seats, deep-loop nylon carpeting, easy-to-care-for all-vinyl trim including color-keyed vinyl headlining.



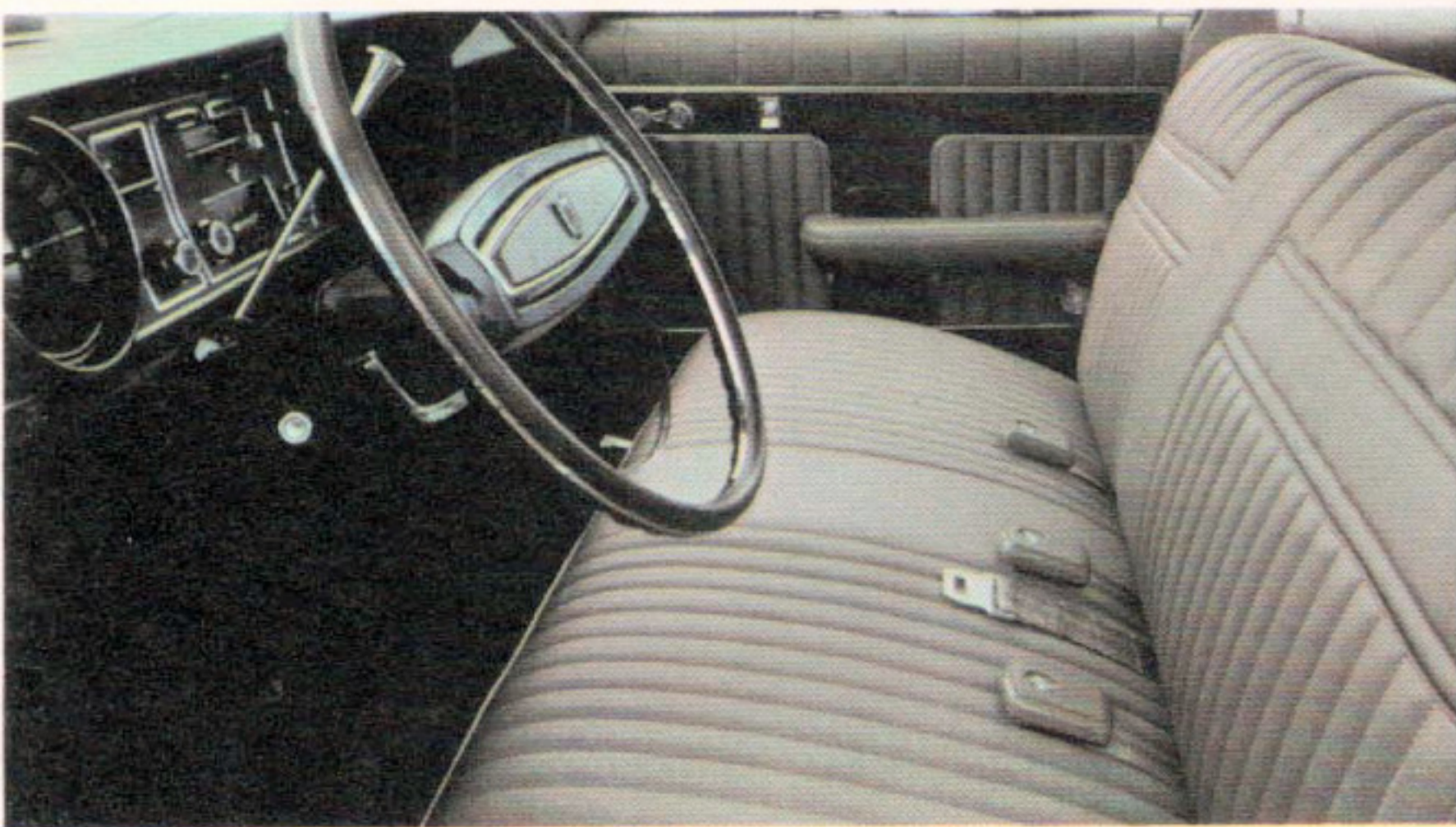
Fine-car touches like deep-loop carpeting, wood-grained vinyl, meticulous tailoring mark this all-vinyl Montego MX wagon interior—yours in a wide range of color schemes.



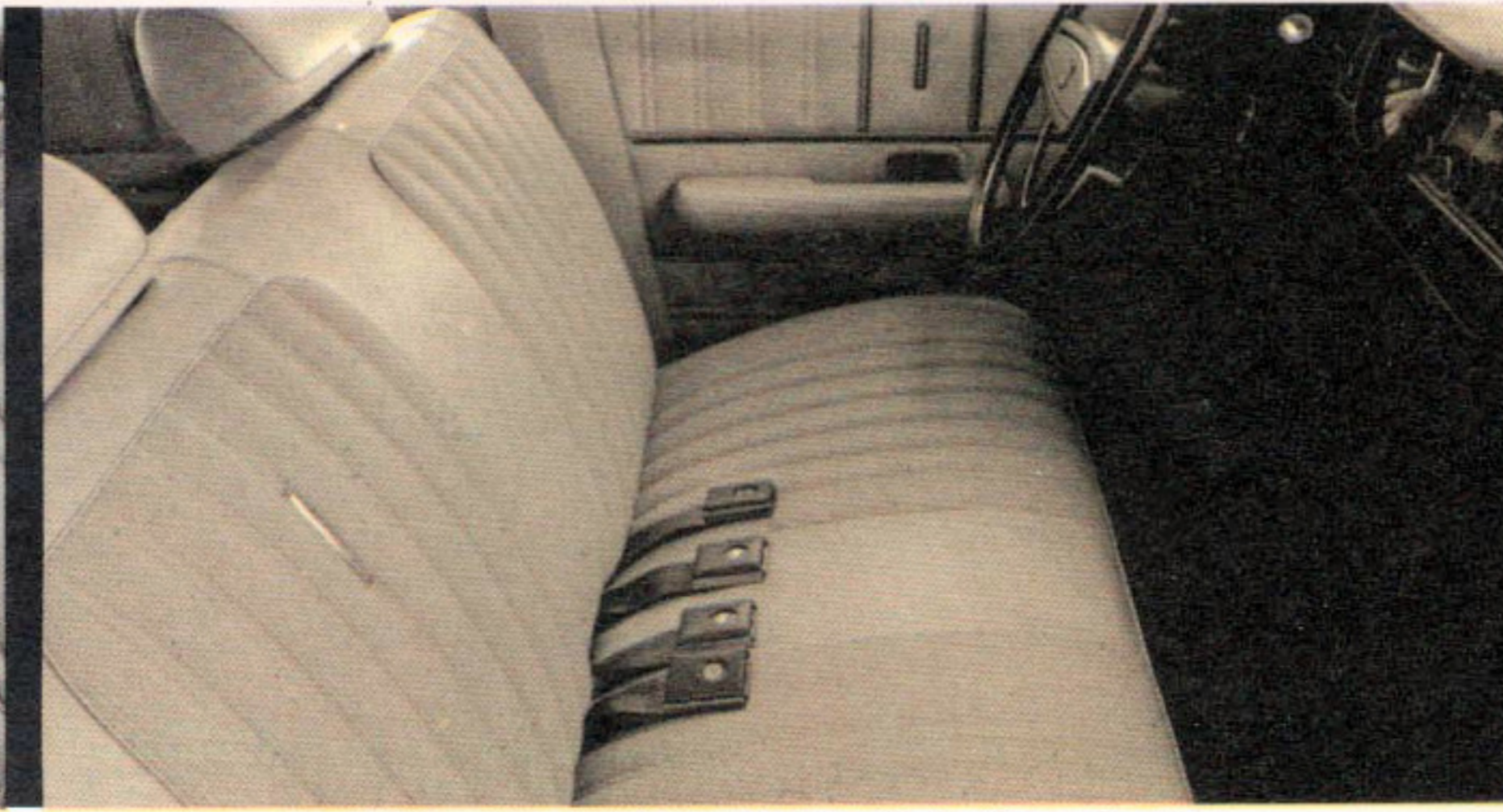
Montego MX 4-door station wagon



Commuter 4-door station wagon



Optional Colony Park decor in cloth-and-vinyl or all-vinyl offers interior luxury at its highest level. Also available with all-vinyl front Twin-Comfort Lounge Seats.



Comfort-Weave vinyl distinguishes this standard interior for the Colony Park; also available as an optional interior in the Commuter.

If Lincoln Continental made a wagon, this would be it!

Colony Park—flagship of the Mercury wagon fleet—unsurpassed in all the station wagon world for cruising comfort and sheer smartness—just as you'd expect from the makers of the Lincoln Continental. Side panels with the look of richly grained veneer sweep full length, and bright moldings on roof edge and window frames add gleaming highlights. The Marauder 390 V-8 is standard power, and Mercury's advanced suspension

design provides a ride that is limousine-like in its road-smoothing quiet. Dual-Action Tailgate, deluxe wheel covers, color-keyed vinyl headlining, Channel-Aire rear roof pillars, bright window frames, deep-loop carpeting, deluxe steering wheel—all are standard. Interior accommodations are spacious, superbly comfortable. Seats of Comfort-Weave vinyl (its porous weave "breathes" for added

suppleness and comfort) are standard, and complemented by fine-car touches like bright metal seat side shields, electric clock, door armrests, squeeze-type door handles. Among fine options you can elect are rear-facing or dual center-facing 3rd seats, luggage carrier, tinted glass, Whisper-Aire Conditioner and Automatic Ride Leveler to keep your wagon on an "even keel" no matter what the load.



Whether you choose your '68 Mercury wagon to get away from it all, or take it all with you, there's ample space inside for big-sized loads and full-sized people—without raising the roof. Small-fry travel first-class with their own built-in "play area" when you choose center-facing 3rd seats (optional in Commuter and Colony Park). Of self-storing design, they're comfortably padded and seat two children. Optional rear-facing 3rd seat provides an "observation car" view for two passengers and is available for all Mercury wagons. Entry to the rear area is made easier by Mercury's unique Dual-Action tailgate that swings wide for passengers, swings down, deck-like, for heavy packages. It's standard on Commuter and Colony Park; optional on Montego MX.

Other options and accessories (not shown) which can be factory-installed to meet your needs:

Automatic Ride Leveler—keeps your wagon on an "even keel" no matter what the load. Available for Colony Park and Commuter.

Oxford Roof—adds an extra look of distinction; Levant-grain vinyl in black, blue, ivory. Available for Colony Park and Commuter.

Luggage Carrier—for roof mounting; rear bars are movable to permit fitting to load.

Big-engine Power Options—up to 390 cu. in. V-8 power for Montego; up to 428 cu. in. V-8 power for Colony Park or Commuter.

Convenience, Appearance and Exterior Items—include Interval Selector Windshield Wipers . . . Power Steering . . . Remote-Control Side View Mirror (left hand) . . . Tinted glass . . . Tinted windshield.

Heavy-Duty Equipment—for big-load conditions. Heavy-duty front and rear springs and shocks . . . Heavy-duty batteries, alternators and cooling systems where driving is in extremely hot weather, or with extra heavy loads or trailers.

Special station wagon options your dealer can install:

Adjustable Air Springs—for heavy-duty towing or load carrying to provide variable support for rear springs. Available for all Mercury station wagons.

Rotunda Trailer Hitches—specially designed by Ford Motor Company engineers for Mercury station wagons.

Others—Rear Bumper Steps . . . All-Purpose Station Wagon Pad . . . Cargo Area Carpet . . . Cargo Mat . . . Rear Window Screen . . . 3rd Seat Heater . . . Mud-and-Stone Deflectors.



Choose from two third-seat options for Colony Park and Commuter. Either dual center-facing (shown above) or rear-facing (shown below). Rear-facing third seat available for Montego MX. Seat belts standard.



Dual-Action Tailgate drops flush for loads, swings wide for people. Standard on Colony Park and Commuter; optional Montego MX.

