

MERKUR SCORPIO

Advancing the art of driving.

IMPORTED FROM GERMANY

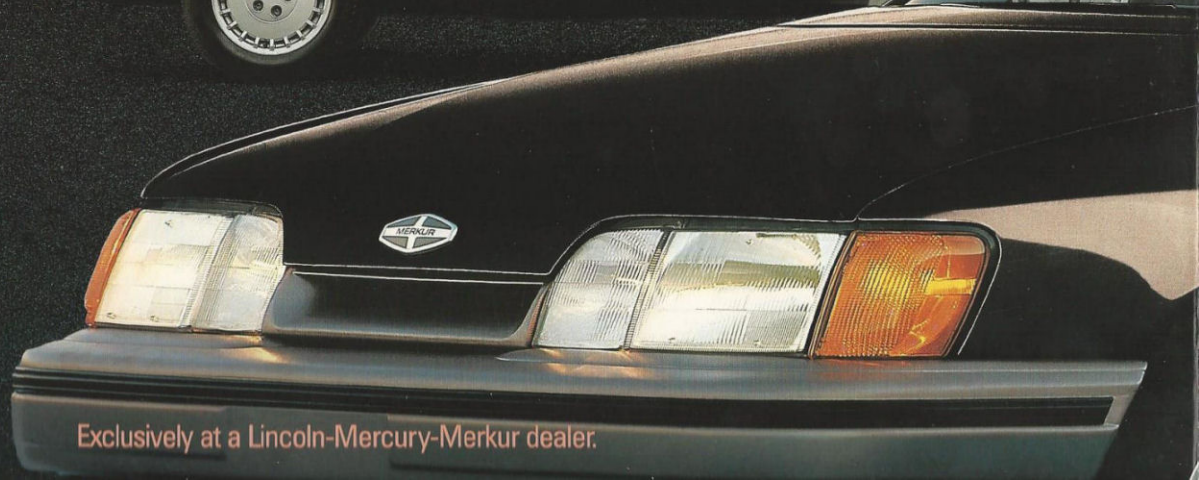


Exclusively at a Lincoln-Mercury-Merkur dealer.

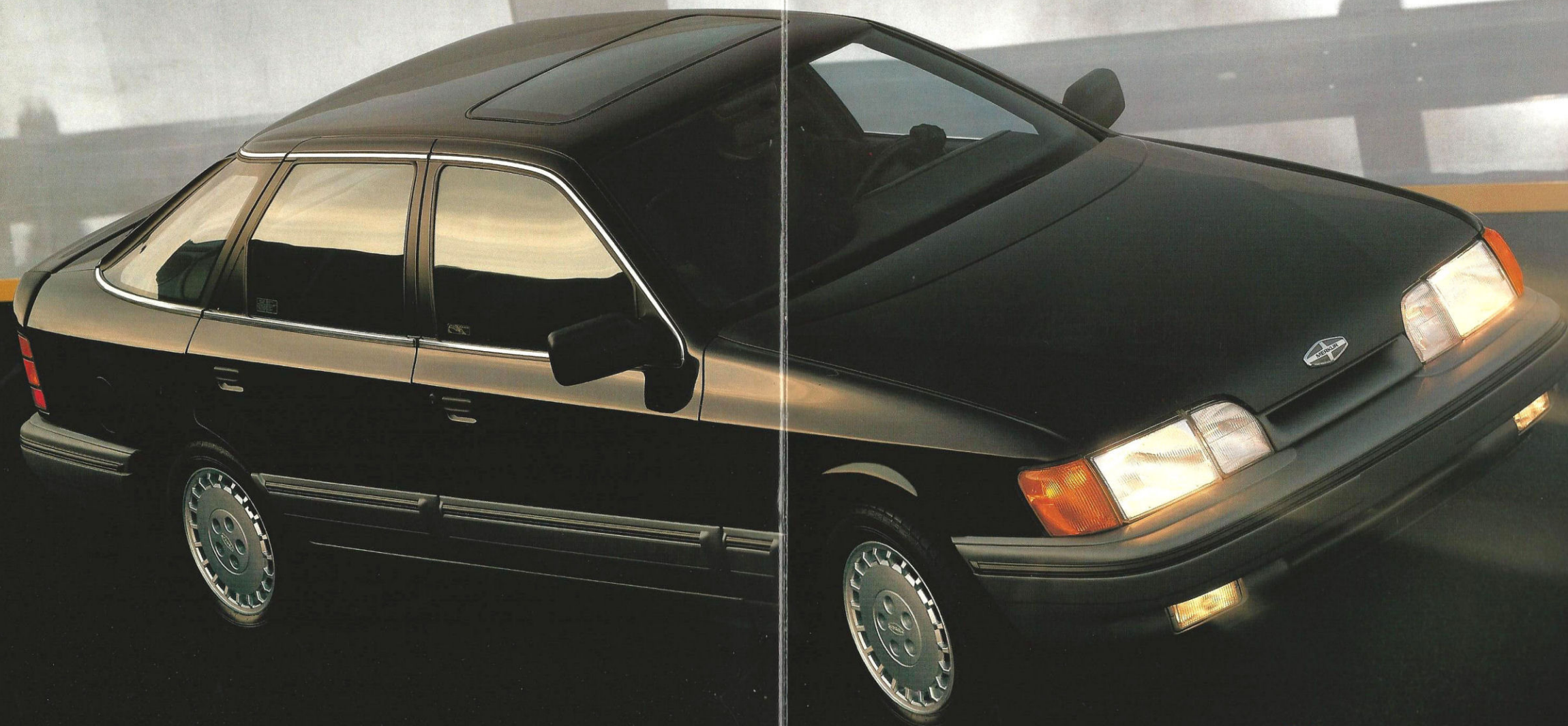
MERKUR SCORPIO

Advancing the art of driving.

IMPORTED FROM GERMANY



Exclusively at a Lincoln-Mercury-Merkur dealer.



Black.

**NOW YOU CAN HAVE
YOUR BLACK FOREST
CAKE... AND ENJOY IT, TOO.**

Sacrifice? Don't be absurd. An exclusive European automobile should be a reward for past sacrifices, not a reason for yet another. But sacrifice in the area of interior comfort is the price some believe one must pay to move into a fine German road car.

The new Merkur Scorpio built in Cologne, West Germany has changed all that. With its electronically controlled V-6 engine, fully independent suspension and rear-wheel drive, Scorpio delivers the responsive over-the-road performance that has been the hallmark of German sedans. Yet on the inside, Scorpio asks you to sacrifice nothing in the areas of comfort and convenience. Scorpio's interior appointments and attention to personal comfort are two of its most distinguishing traits.

But don't be misled into thinking that all of the energy of Scorpio's designers and engineers went into the interior. From its efficient aerodynamic exterior to its dynamic Anti-lock Brake System, Scorpio displays a wealth of technical sophistication.

THE MOST HONORED EUROPEAN. When Scorpio was introduced in Europe it won 18 major European automotive awards. From the German Road Safety Award to the coveted European Car of the Year title, the European automotive community recognized the bold new direction of Scorpio and gave its overwhelming approval.

EXCEPTIONAL RESALE VALUE. While others talk about excellent resale value, Scorpio ensures it. In writing. It's called the Guaranteed Resale Value Program. It's your written guarantee that your Scorpio will have one of the highest trade-in values of any car in its class. See your Lincoln-Mercury-Merkur dealer for a copy of this program.

ONLY A FEW WILL POSSESS SCORPIO. Scorpio is produced in limited numbers for America and available only through specially selected Lincoln-Mercury-Merkur dealers. Scorpio is aimed at that small segment of the population that is unwilling to compromise on its goals and desires. After all, when you've achieved a level of success that allows you to afford Scorpio, you've probably sacrificed enough already.





Black.

**NOW YOU CAN HAVE
YOUR BLACK FOREST
CAKE...AND ENJOY IT, TOO.**

Sacrifice? Don't be absurd. An exclusive European automobile should be a reward for past sacrifices, not a reason for yet another. But sacrifice in the area of interior comfort is the price some believe one must pay to move into a fine German road car.

The new Merkur Scorpio built in Cologne, West Germany has changed all that. With its electronically controlled V-6 engine, fully independent suspension and rear-wheel drive, Scorpio delivers the responsive over-the-road performance that has been the hallmark of German sedans. Yet on the inside, Scorpio asks you to sacrifice nothing in the areas of comfort and convenience.

Scorpio's interior appointments and attention to personal comfort are two of its most distinguishing traits.

But don't be misled into thinking that all of the energy of Scorpio's designers and engineers went into the interior. From its efficient aerodynamic exterior to its dynamic Anti-lock Brake System, Scorpio displays a wealth of technical sophistication.

THE MOST HONORED EUROPEAN. When Scorpio was introduced in Europe it won 18 major European automotive awards. From the German Road Safety Award to the coveted European Car of the Year title, the European automotive community recognized the bold new direction of Scorpio and gave its overwhelming approval.

EXCEPTIONAL RESALE VALUE. While others talk about excellent resale value, Scorpio ensures it. In writing. It's called the Guaranteed Resale Value Program. It's your written guarantee that your Scorpio will have one of the highest trade-in values of any car in its class. See your Lincoln-Mercury-Merkur dealer for a copy of this program.

ONLY A FEW WILL POSSESS SCORPIO. Scorpio is produced in limited numbers for America and available only through specially selected Lincoln-Mercury-Merkur dealers. Scorpio is aimed at that small segment of the population that is unwilling to compromise on its goals and desires. After all, when you've achieved a level of success that allows you to afford Scorpio, you've probably sacrificed enough already.





Optional Taupe leather upholstery.



German-market Scorpio in Strato Silver Metallic.

quality speakers.

12-station memory. Power comes from a separate 4-channel amplifier.

FILL THE ATMOSPHERE WITH MUSIC. Scorpio features an electronic AM/FM stereo cassette with Dolby, auto-reverse, seek, scan and alert, headlight, parking light, tailight, brake light outage and seat belts graphic alert module with warning lights for door/hatchback ajar, ice coolant level and high engine coolant temperature. There is also a ignition, low fuel, low washer fluid level, brake warning, low engine

warning lights for front and rear brake pad wear, ABS, oil pressure, tachometer, fuel and engine coolant temperature. They are supplemented by 150 mph speedometer, 7,000 rpm

gauges goes beyond what is expected. Analog gauges include complements of warning lights and

Scorpio's through economy, fuel used and range provides instant and average (part of Touring Package option) temperature. The fuel computer

elapsed time and ambient outside temperature. At the press of a button console with a multi-function digi-

TIPS. Scorpio features an overhead information at your fingers. Lights indicate which air outlets are in use and fan speed, as well.

However, when you want specific control it's yours at the display and forget about it. A microprocessor controls fan speed and air distribution throughout the interior to maintain the desired temperature.

to empty.

Optional fuel computer.

Electronic Automatic Climate Control.

Six-speed variable intermittent wipers.

Optional Taupa leather upholstery.

Electronic Automatic Climate Control.

Six-speed variable intermittent wipers.

Optional fuel computer.

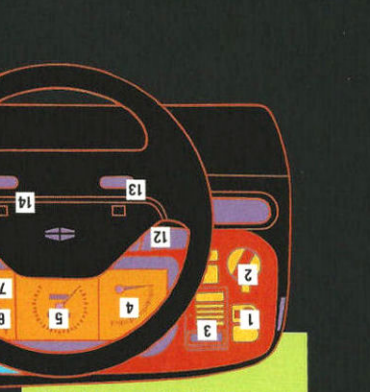
Electronic Automatic Climate Control.

Six-speed variable intermittent wipers.

Electronic Automatic Climate Control.



IT'S MOST ALLURING QUALITY MAY BE THE WAY IT MAKES YOU FEEL.



- 1 Fog lights
- 2 Headlights
- 3 Fuel computer (optional)
- 4 7,000 rpm tachometer
- 5 150 mph speedometer
- 6 Temperature gauge
- 7 Fuel gauge
- 8 Graphic alert module
- 9 Automatic Climate Control
- 10 Temperature setting
- 11 Speed control on/off
- 12 Coast/resume, set/accel
- 13 Wiper/washer
- 14 AM/FM stereo cassette
- 15 Balance and fade controls

The designers charged with crafting Scorpio's interior had a clear direction: Produce an environment that is exceptionally comfortable, exceedingly spacious and driver efficient. The results of their labor are displayed here before you on the facing pages and on the large fold-out can gauge only by experiencing Scorpio firsthand.

SLAMMING THE DOOR ON CONVENTIONAL THOUGHT. Scorpio designers shunned conventional approaches. They designed Scorpio from the inside out to ensure objectives for spaciousness and comfort would be met.

The benefits of this approach are particularly apparent when you examine the rear passenger compartment. Legroom is impressive, measuring just over three feet. The rear seatback is split 60/40 and each portion can be electrically reclined up to 15 degrees. Rear seat passengers also enjoy 3-point safety harnesses (outboard passengers), a fold-down center armrest and their own airflow control for heat and air conditioning.

THE DRIVER IS STILL IN CONTROL. Of course, great attention has also been paid to the front seats. Both seats feature a combination of power and manual adjustments that allow a total of 16 different movements. Included are thigh and lumbar supports, full recline capabilities and power height adjustments. The 4-way adjustable steering column allows the steering wheel to telescope in and out or move up and down to achieve the most comfortable driving position.

A study of interaction between man and machine—was the guiding principle throughout Scorpio's interior. Its influence is clearly visible in strives for both comfort and efficiency, its influence is clearly visible in close proximity to the steering wheel.

Scorpio possesses all of the amenities necessary for a desirable style of living. It has all the power conveniences like windows, door locks, seats and outside mirrors.

It has thoughtful appointments like a broad rear windshield wiper that you engage reverse while the front wipers are on.

Scorpio's sophisticated Electronic Automatic Climate Control System allows you the luxury of tailoring it to suit your personal preferences.



NOW YOU CAN HAVE YOUR BLACK FOREST CAKE... AND ENJOY IT, TOO.

Sacrifice? Don't be absurd. An exclusive European automobile should be a reward for past sacrifices, not a reason for yet another. But sacrifice in the area of interior comfort is the price some believe one must pay to move into a fine German road car.

The new Merkur Scorpio built in Cologne, West Germany has changed all that. With its electronically controlled V-8 engine, fully independent suspension and rear-wheel drive, Scorpio delivers the responsive over-the-road performance that has been the hallmark of German sedans. Yet on the inside, Scorpio asks you to sacrifice nothing in the areas of comfort and convenience.

Scorpio's interior appointments and attention to personal comfort are two of its most distinguishing traits.

But don't be misled into thinking that all of the energy of Scorpio's designers and engineers went into the interior. From its efficient aerodynamic exterior to its dynamic Anti-lock Brake System, Scorpio displays a wealth of technical sophistication.

THE MOST HONORED EUROPEAN. When Scorpio was introduced in Europe it won 18 major European automotive awards. From the German Road Safety Award to the coveted European Car of the Year title, the European automotive community recognized the bold new direction of Scorpio and gave its overwhelming approval.

EXCEPTIONAL RESALE VALUE. While others talk about excellent resale value, Scorpio ensures it. In writing, It's called the Guaranteed Resale Value Program. Its your written guarantee that your Scorpio will have one of the highest trade-in values of any car in its class. See your Lincoln-Mercury-Merkur dealer for a copy of this program.

ONLY A FEW WILL POSSESS SCORPIO. Scorpio is produced in limited numbers for America and available only through specially selected Lincoln-Mercury-Merkur dealers. Scorpio is aimed at that small segment of the population that is unwilling to compromise on its goals and desires. After all, when you've achieved a level of success that allows you to afford Scorpio, you've probably sacrificed enough already.



German-market Scorpio in Strais Silver Metallic.

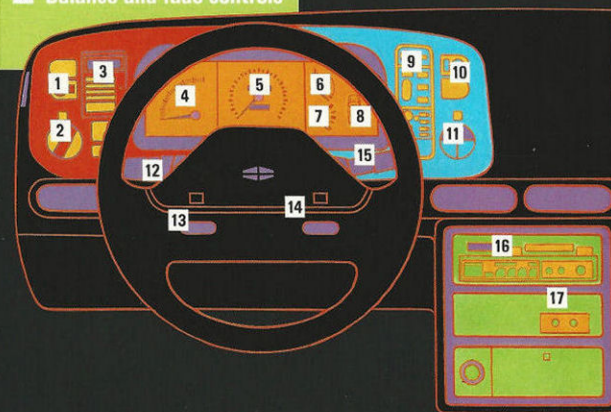


**ITS MOST ALLURING
QUALITY MAY BE THE
WAY IT MAKES YOU FEEL.**



Rear electric reclining seatbacks and more than three feet of legroom.

- 1 Fog lights
- 2 Headlights
- 3 Fuel computer (optional)
- 4 7,000 rpm tachometer
- 5 150 mph speedometer
- 6 Temperature gauge
- 7 Fuel gauge
- 8 Graphic alert module
- 9 Automatic Climate Control
- 10 Rear defroster
- 11 Temperature setting
- 12 Turn signals/high beams
- 13 Speed control on/off
- 14 Coast/resume, set/accel
- 15 Wiper/washer
- 16 AM/FM stereo cassette
- 17 Balance and fade controls



The designers charged with crafting Scorpio's interior had a clear direction: Produce an environment that is exceptionally comfortable, exceedingly spacious and driver efficient. The results of their labor are displayed here before you on the facing pages and on the large fold-out beneath. But their success in achieving these goals is something you can gauge only by experiencing Scorpio firsthand.

SLAMMING THE DOOR ON CONVENTIONAL THOUGHT. Scorpio designers shunned conventional approaches. They designed Scorpio from the inside out to ensure objectives for spaciousness and comfort would be met.

The benefits of this approach are particularly apparent when you examine the rear passenger compartment. Legroom is impressive, measuring just over three feet. The rear seatback is split 60/40 and each portion can be electrically reclined up to 15 degrees. Rear seat passengers also enjoy 3-point safety harnesses (outboard passengers), a fold-down center armrest and their own airflow control for heat and air conditioning.

THE DRIVER IS STILL IN CONTROL. Of course, great attention has also been paid to the front seats. Both seats feature a combination of power and manual adjustments that allow a total of 16 different movements. Included are thigh and lumbar supports, full recline capabilities and power height adjustments. The 4-way adjustable steering column allows the steering wheel to telescope in and out or move up and down to achieve the most comfortable driving position.

A KEEN SENSE OF WHERE THINGS SHOULD BE. Ergonomics—the study of interaction between man and machine—was the guiding influence throughout Scorpio's interior. In simple terms, ergonomics strives for both comfort and efficiency. Its influence is clearly visible in the easy-to-read analog instrumentation and the positioning of controls in close proximity to the steering wheel.

Scorpio possesses all of the amenities necessary for a desirable style of living. It has all the power conveniences like windows, door locks, seats and outside mirrors (heated). All standard, of course. It has thoughtful appointments like a broad rear windshield wiper that comes on automatically any time you engage reverse while the front wipers are on.

CONTROL YOUR ENVIRONMENT. Scorpio's sophisticated Electronic Automatic Climate Control system allows you the luxury of tailoring it to suit your personal preferences.



In the automatic mode you simply select the temperature on the digital display and forget about it. A microprocessor controls fan speed and air distribution throughout the interior to maintain the desired temperature.

However, when you want specific control it is yours at the press of a button. The Search button allows you to direct airflow through panel, windshield or floor vents or any combination of the two. Want maximum heat at your feet? You've got it. Or maybe at your feet and face? You could have that, too. You can also select high or low fan speed. Lights indicate which air outlets are in use and fan speed, as well.

INFORMATION AT YOUR FINGERTIPS. Scorpio features an overhead console with a multi-function digital clock. At the press of a button it will display time, month/date, elapsed time and ambient outside temperature. The fuel computer (part of Touring Package option) provides instant and average economy, fuel used and range to empty.

Scorpio's thorough complement of warning lights and gauges goes beyond what is expected. Analog gauges include 150 mph speedometer, 7,000 rpm tachometer, fuel and engine coolant temperature. They are supplemented by warning lights for front and rear brake pad wear, ABS, oil pressure, ignition, low fuel, low washer fluid level, brake warning, low engine coolant level and high engine coolant temperature. There is also a graphic alert module with warning lights for door/hatchback ajar, ice alert, headlight, parking light, taillight, brake light outage and seat belts. **FILL THE ATMOSPHERE WITH MUSIC.** Scorpio features an electronic AM/FM stereo cassette with Dolby® auto-reverse, seek/scan and 12-station memory. Power comes from a separate 4-channel amplifier with balance and fade controls providing 15 watts per channel to six quality speakers.



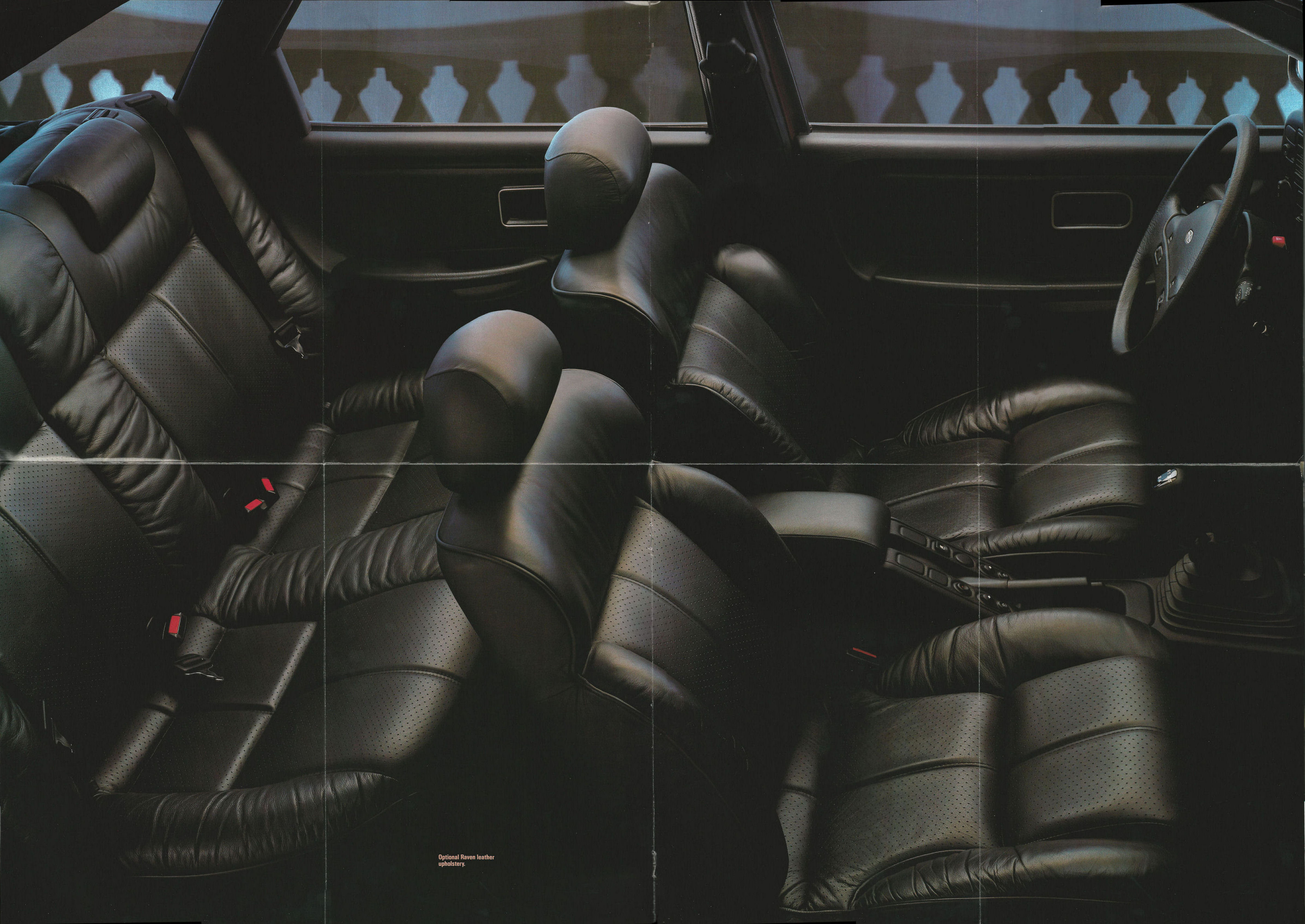
Optional fuel computer.



Electronic Automatic Climate Control.



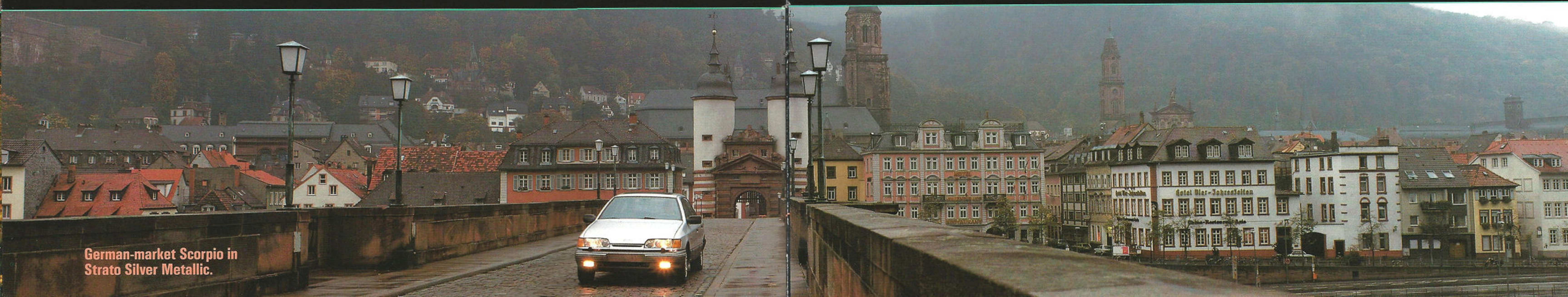
Six-speed variable intermittent wipers.



Optional Raven leather upholstery.



Strato Silver Metallic.



German-market Scorpio in Strato Silver Metallic.

**A VERSATILITY TO SURPASS YOUR
GREATEST EXPECTATIONS.**

The smooth flowing lines don't readily reveal it but Scorpio is actually a hatchback design. Embracing this format allowed designers to attain the exceptional passenger compartment dimensions they sought *and* deliver outstanding versatility in use of interior space.

CONSUME YOUR MOST VALUABLE POSSESSIONS. The rear hatch moves up out of the way to reveal an impressive carrying capacity. Access is easy thanks to the low liftover height to the luggage area. There is no high lip to clear when loading as is often the case with a standard trunk.

The 60/40 split seat-back allows the versatility of folding only one section or the other to increase cargo area. When the entire seatback is folded it lies flush to provide a smooth, flat cargo floor. Long or bulky items that would never squeeze into a normal trunk can be accommodated by Scorpio with ease.

Careful thought was even given to the simple operation of folding the rear seats down. Each section of the seatback is released by pressing a broad button just above the shoulder level on each side. Each is easy to reach and requires only a light touch.

Pulling the open rear hatch down is also easy. The molded trim panel on the inside of the hatch is recessed to serve as a convenient handle.



With the rear seat folded flat, Scorpio offers exceptional carrying capacity.



Hatchback and 60/40 split folding rear seat give Scorpio tremendous versatility.

Burgundy Red.



**A SHAPE THAT LETS NOTHING
STAND IN YOUR WAY.**

The atmosphere is a major hindrance to an automobile at speed. As speed increases, more of an engine's power must be used to push through it. Improve the aerodynamic efficiency of an automobile and you lessen the negative effects of the atmosphere. Improving aerodynamic efficiency has a positive influence upon fuel economy, wind noise and even handling at highway speeds. It was for these reasons that aerodynamics played such an important role in shaping the exterior form of Scorpio.

THE FORM THE WIND HELPED CREATE. It was in West Germany within one of the world's newest and largest wind tunnels that the final exterior shape of Scorpio was determined. With wind speeds up to 186 mph generated by turbine blades over 20 feet tall, the wind tunnel gave designers the test conditions

they needed to perfect Scorpio's sleek, elegant shape. This testing also allowed them to achieve benefits in engine and brake cooling.

AERODYNAMIC EFFICIENCY WITHIN PRACTICAL LIMITS. Throughout Scorpio's development designers strove to strike a balance between technical objectives and what is really practical. For example, aerodynamic efficiency could have benefited by making the outside mirrors smaller. But the corresponding loss of rear visibility would not have been acceptable. The mirrors remained large and Scorpio still recorded an impressive drag coefficient of 0.34.

At the front of Scorpio, flush fitting headlamps and a molded polycarbonate bumper guide the air over and around the nose. The edges of the fenders are rounded for smooth airflow and the windshield wipers are partially concealed to keep them out of the flow of air.

The drip rails above the doors are concealed and the side glass is fitted flush. The broad rear glass area and abrupt rear deck help direct the air as it exits the car to reduce turbulence and thus lessen drag.



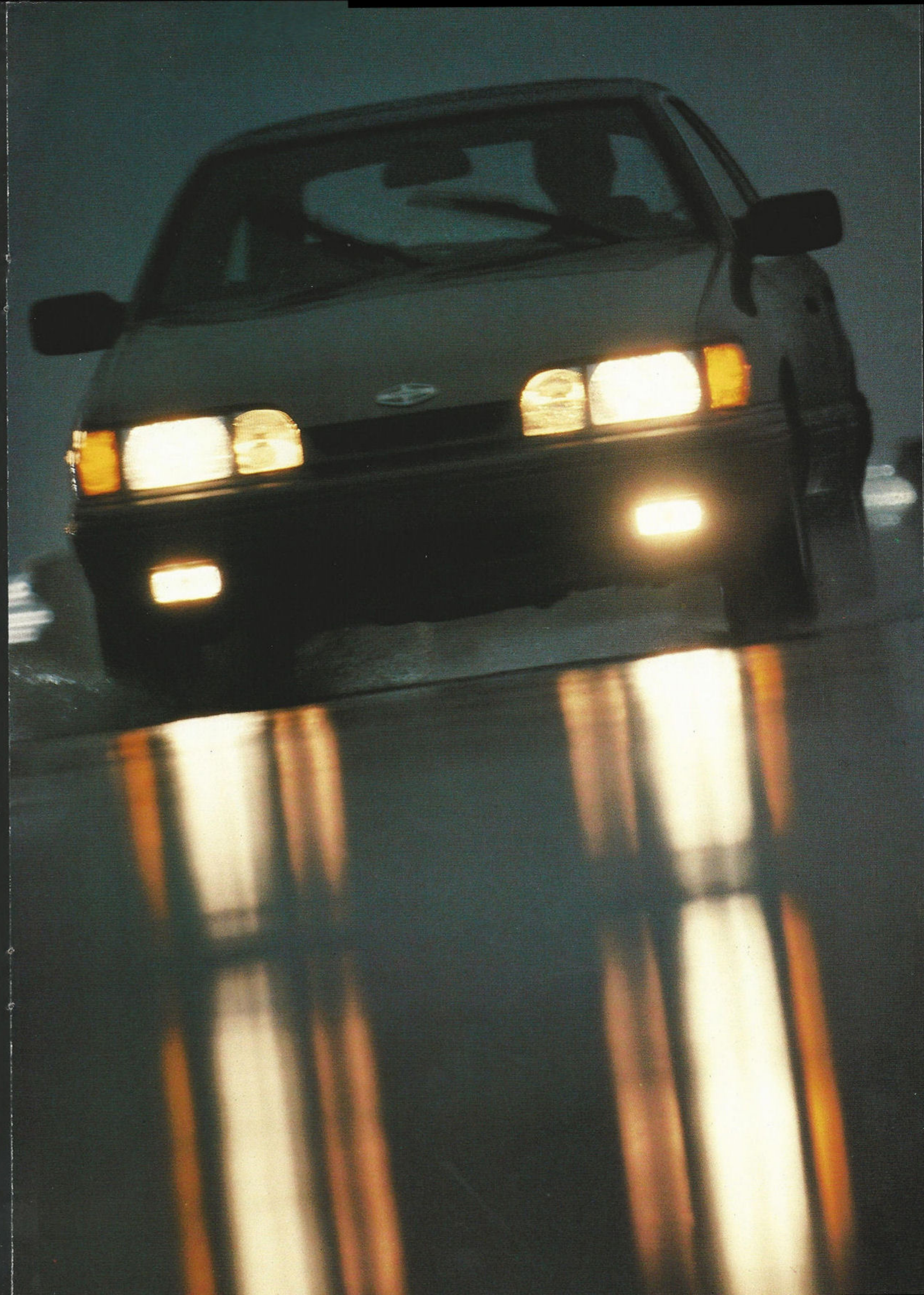
Flush mounted side glass improves aerodynamic efficiency.

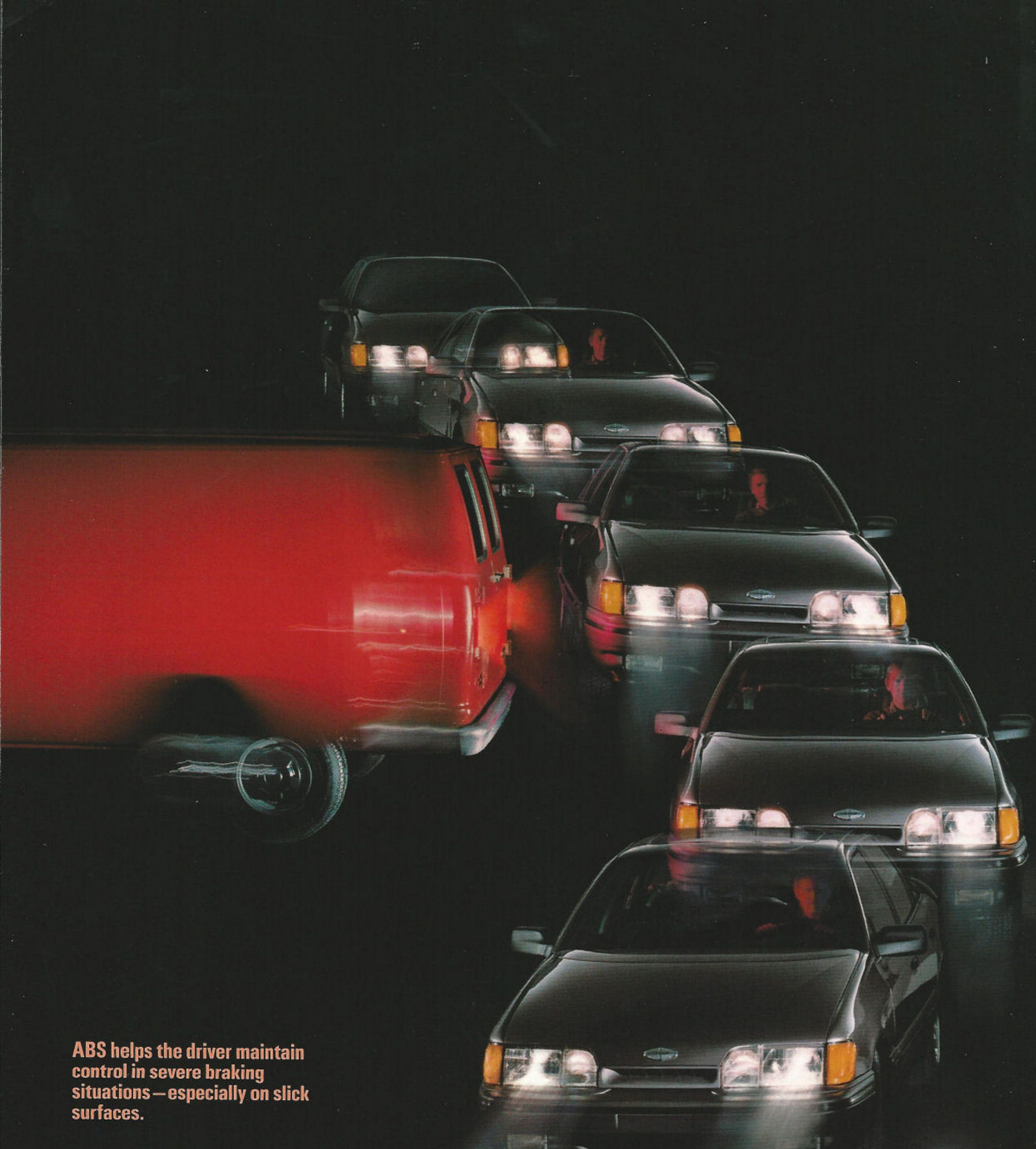


Special fittings allow the use of roof racks.



Strakes along the rear glass aid aerodynamics.



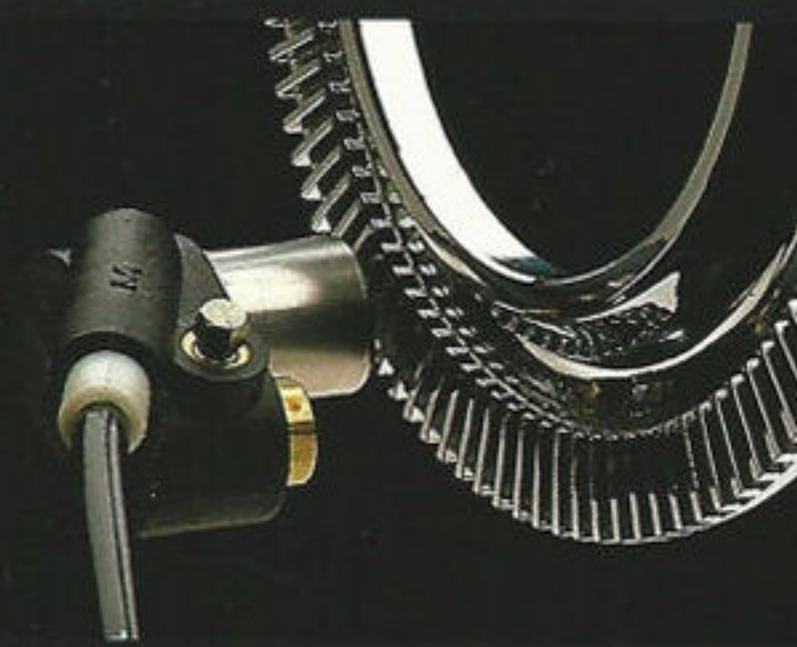


ABS helps the driver maintain control in severe braking situations—especially on slick surfaces.

THE WORLD'S MOST ADVANCED WILL DO JUST FINE.

The Anti-lock Brake System, or simply ABS as it is commonly known, is recognized as the most advanced braking system in the world today. And it's standard on every Scorpio.

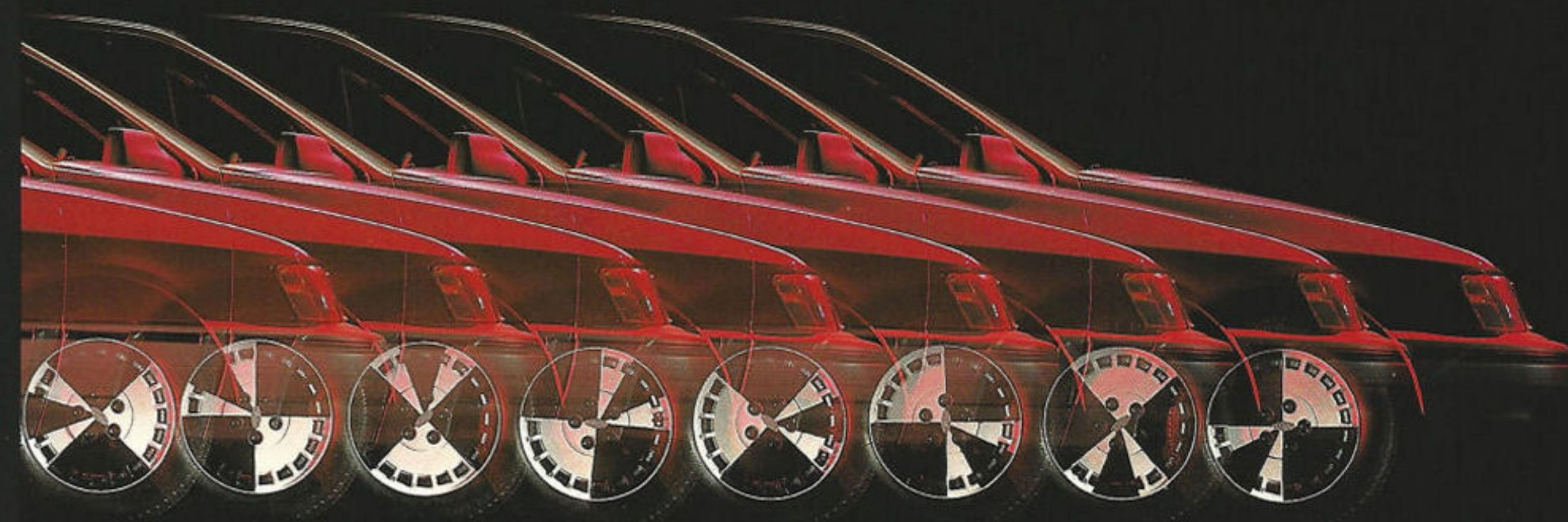
BRAKES THAT "THINK:" ABS gives Scorpio brakes that actually react to both driver input and road conditions. Not just the pressure of the driver's foot upon the brake pedal.



Sensors at each wheel send information to ABS micro-processor.

In simple terms, ABS helps the driver maintain greater control than conventional braking systems can. On wet, snow-covered or ice-slick pavement, ABS helps a driver obtain straight, controlled stops. And during hard braking on slick surfaces, an ABS-equipped automobile can help a driver stop in up to 40% less distance than one with a conventional brake system.

EFFICIENCY THE PROS CAN'T DUPLICATE. ABS doesn't allow the wheels to lock. No matter how hard the driver stomps on the pedal. No matter how slick the pavement. Sensors at each wheel monitor individual



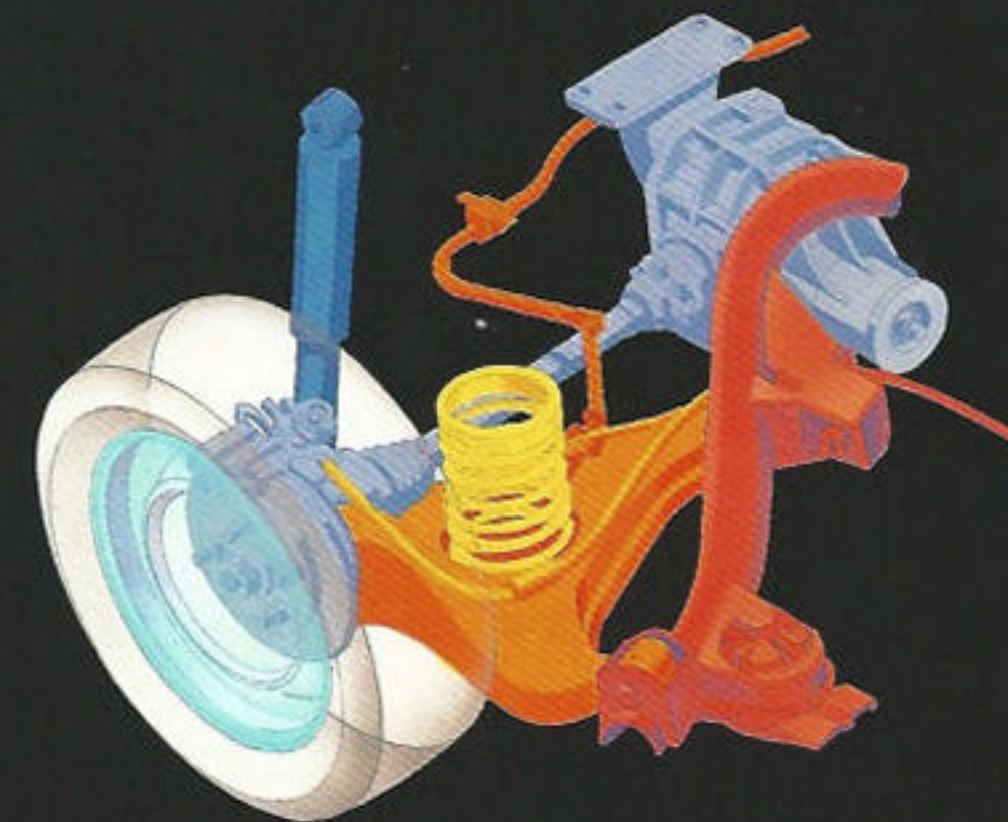
wheel movements and provide information to a microprocessor. When the sensors detect the start of lockup, a signal is sent to the microprocessor which then controls braking pressure to keep each individual wheel on the threshold of lockup. There, maximum braking efficiency is achieved. The action of ABS is so quick—measured in milliseconds—that changes in braking pressure can occur up to 12 times a second, depending upon road conditions. It is braking efficiency that even the world's best professional drivers cannot duplicate.

Scorpio's power assisted brake system features ventilated front and solid rear discs and uses only asbestos-free materials.

ABS prevents wheel lockup by changing brake pressure up to 12 times a second.



PERFORMANCE EXPRESSED IN SMOOTH, FLUID MOVEMENTS.



On paper, the potential is clearly there: electronically controlled V-6 engine, fully independent suspension, rack-and-pinion steering, near perfect weight distribution (52% front/48% rear), rear-wheel drive and four-wheel disc brakes with ABS. On the road, the potential is realized with performance that is expressed in smooth, fluid movements.

SOPHISTICATED POWER. Germany's high speed autobahn system served as the proving ground for Scorpio's 144 horsepower (SAE) V-6. With multi-port electronic fuel-injection and twin-throttle design, it delivers a wide torque band for excellent driveability in both city and highway situations. At least 90% of full engine torque is available over three quarters of the entire engine operating range.

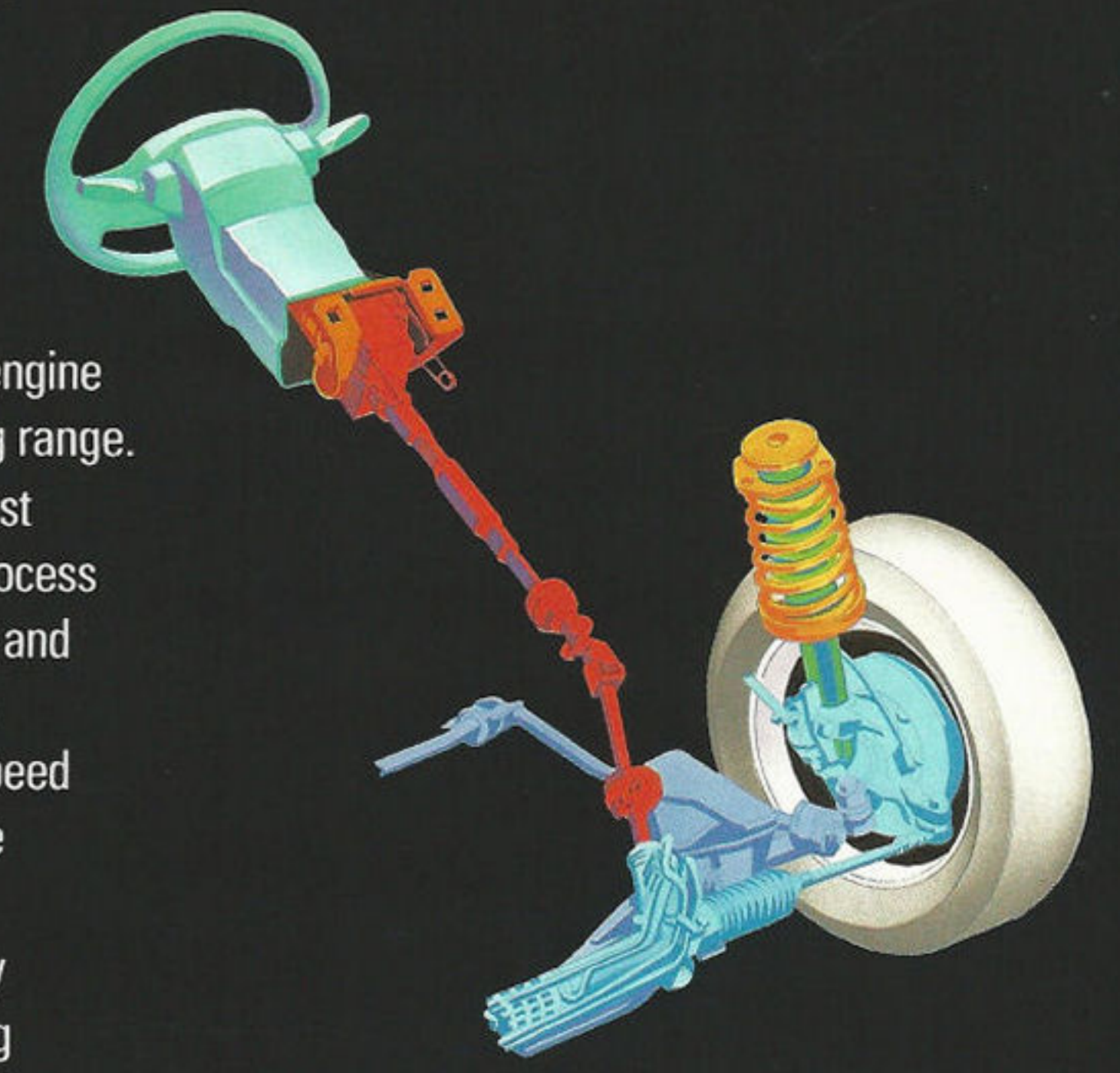
The engine is controlled by EEC-IV, one of the world's most advanced electronic engine control systems. With the capacity to process up to 250,000 operations per second, EEC-IV continuously monitors and fine-tunes engine functions for optimum operating efficiency. It even compensates for age and wear as mileage increases. A precise 5-speed manual is the standard transmission. A 4-speed automatic overdrive is optional.

A FULLY INDEPENDENT SUSPENSION. Scorpio's finely tuned, fully independent suspension rewards with outstanding ride and handling qualities and excellent driver control. Up front, Scorpio has MacPherson struts, linear rate coil springs and a hefty 27mm stabilizer bar. A positive scrub radius of 12mm provides excellent steering feel while computer aided design analysis helped provide for minimum toe change over the full suspension movement to benefit handling and reduce rolling resistance.

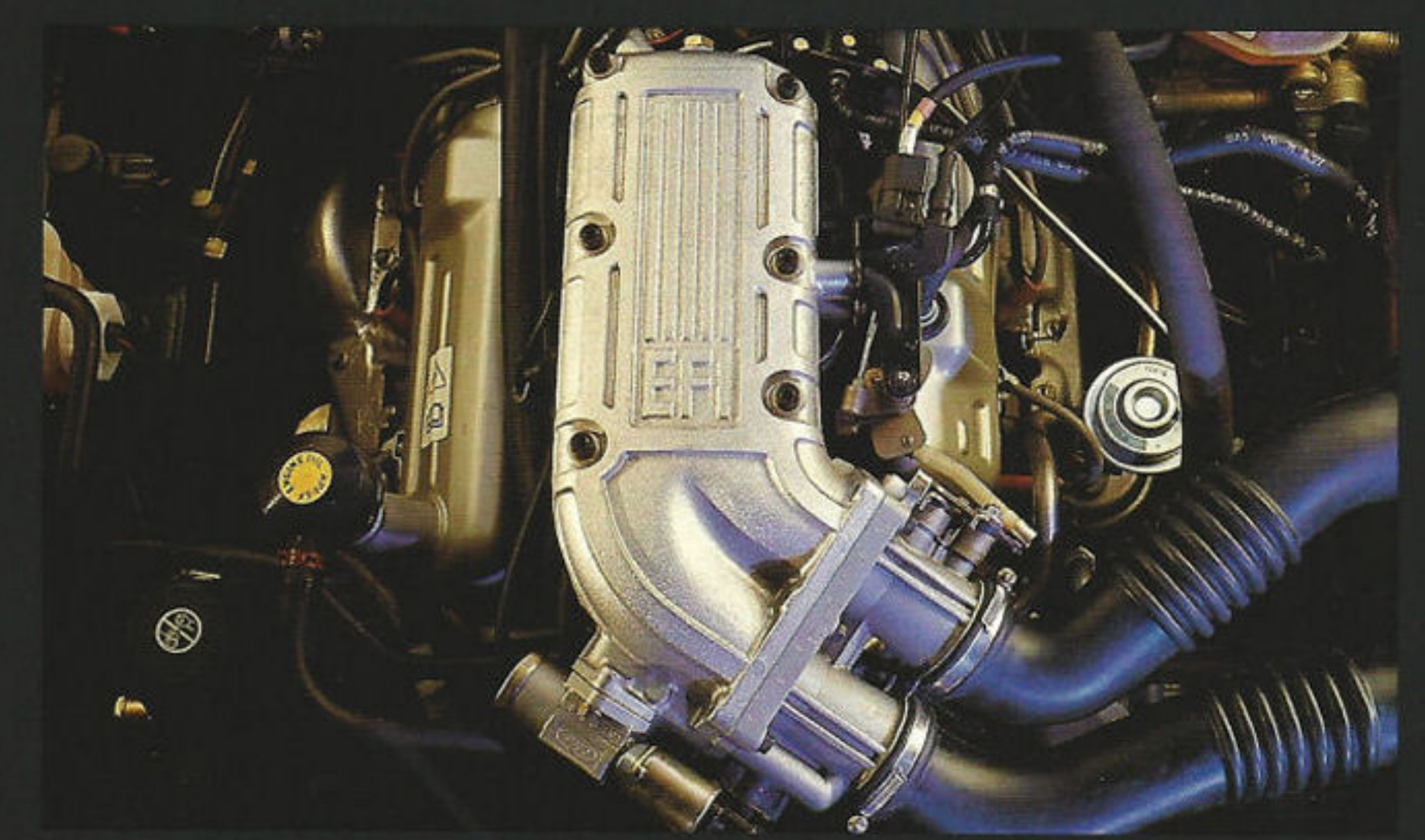
The independent rear suspension features semi-trailing arms pivoted at 18 degrees to the transverse axis for optimum power-on/power-off characteristics and minimum camber change. There are also linear rate coil springs and a 16mm stabilizer bar. The springs work in conjunction with micro cellular polyurethane auxiliary springs to provide constant ride frequency under most conditions.

Independent rear suspension.

MacPherson strut front suspension with variable ratio, power assisted rack-and-pinion steering.



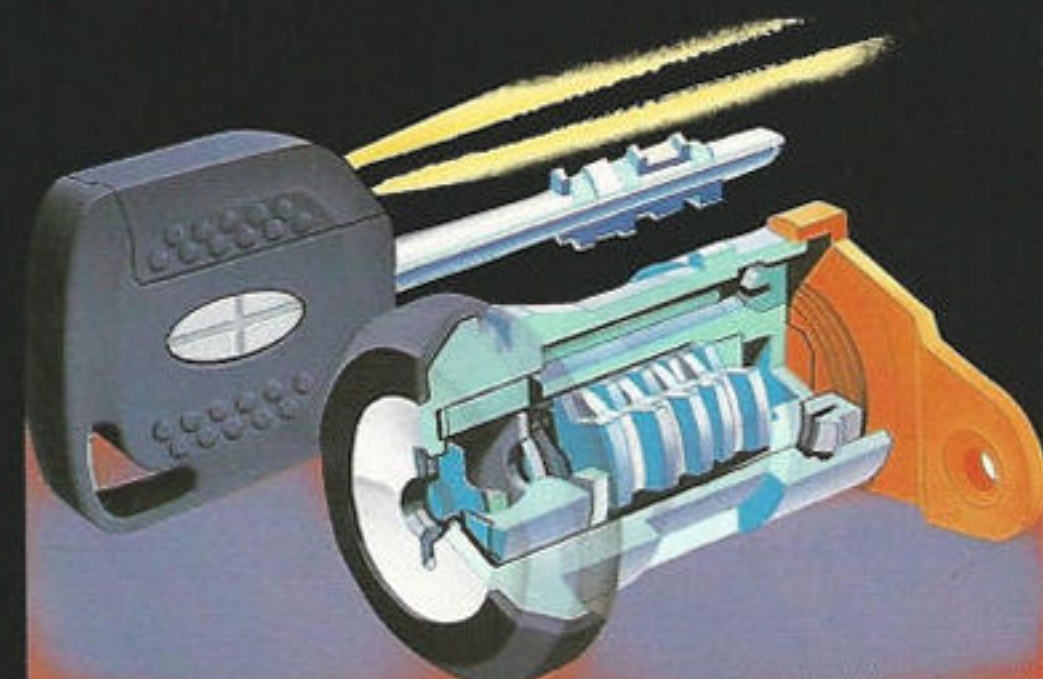
Scorpio's V-6 electronically controlled engine develops 144 horsepower (SAE).



**THERE CAN BE NO COMPROMISE
ON DETAILS.**

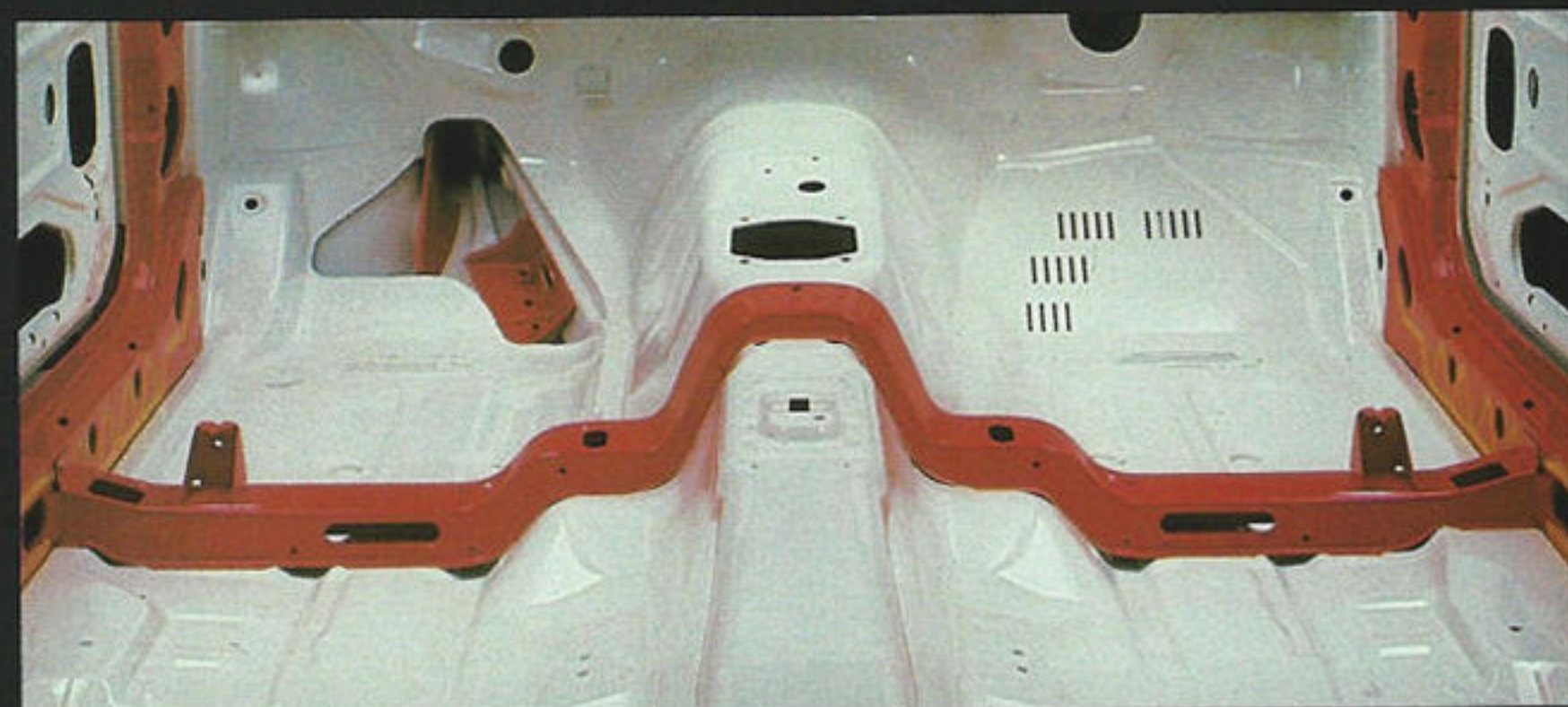
One of the most captivating aspects of Scorpio is its great attention to detail. It's there in so many of the little features easily taken for granted. Like the use of an electronic speedometer which eliminates the need for a cable. Or wiring that is wrapped in fabric at critical points to help prevent squeaks that can occur when plastic coated wires rub together.

ECCENTRICITY CAN HOLD THE SOLUTION. The key is a good example of this intense attention to detail. It isn't flat like normal keys. It's a shaft with little shapes protruding at one end. Instead of using the typical spring-loaded tumblers, the system uses small disc plates which help prevent manipulation by a thief.



Special key and lock system.

SOMETIMES THERE'S NO SUBSTITUTE FOR STRENGTH. When it comes to occupant safety, brute strength has its advantages. Scorpio has a very strong central passenger compartment structure with impact-absorbing crumple zones front and rear. The front zone yields in two stages. Initially, it crushes relatively easily to provide a "gentle" start to the decel-



Crossmember enhances structural integrity of passenger compartment.

eration process. But, as deformation reaches the engine compartment the resistance to deformation increases significantly. The body structure and door latches have been designed to keep the doors shut during a 30-mph front barrier impact, yet still allow them to be opened afterwards.

Actual crash tests of Scorpio prototypes were supplemented by computer simulations and comprehensive structural tests in the laboratory on specific components. Door latches and locks, for instance, were rigorously tested for performance and design integrity for over 90,000 cycles.

CRAFTSMANSHIP AND COMPUTER TECHNOLOGY SIDE BY SIDE. In Scorpio, computer-controlled technology and traditional craftsmanship are combined to encourage the highest standards of manufacturing quality. The Ford Niehl plant in Cologne, West Germany, which builds the Scorpio, underwent a multi-million dollar investment program aimed specifically at improving quality and efficiency. The key to this high quality



Radio antenna hidden in rear windscreen.



Scorpio. A blend of Old World craftsmanship and modern technology.

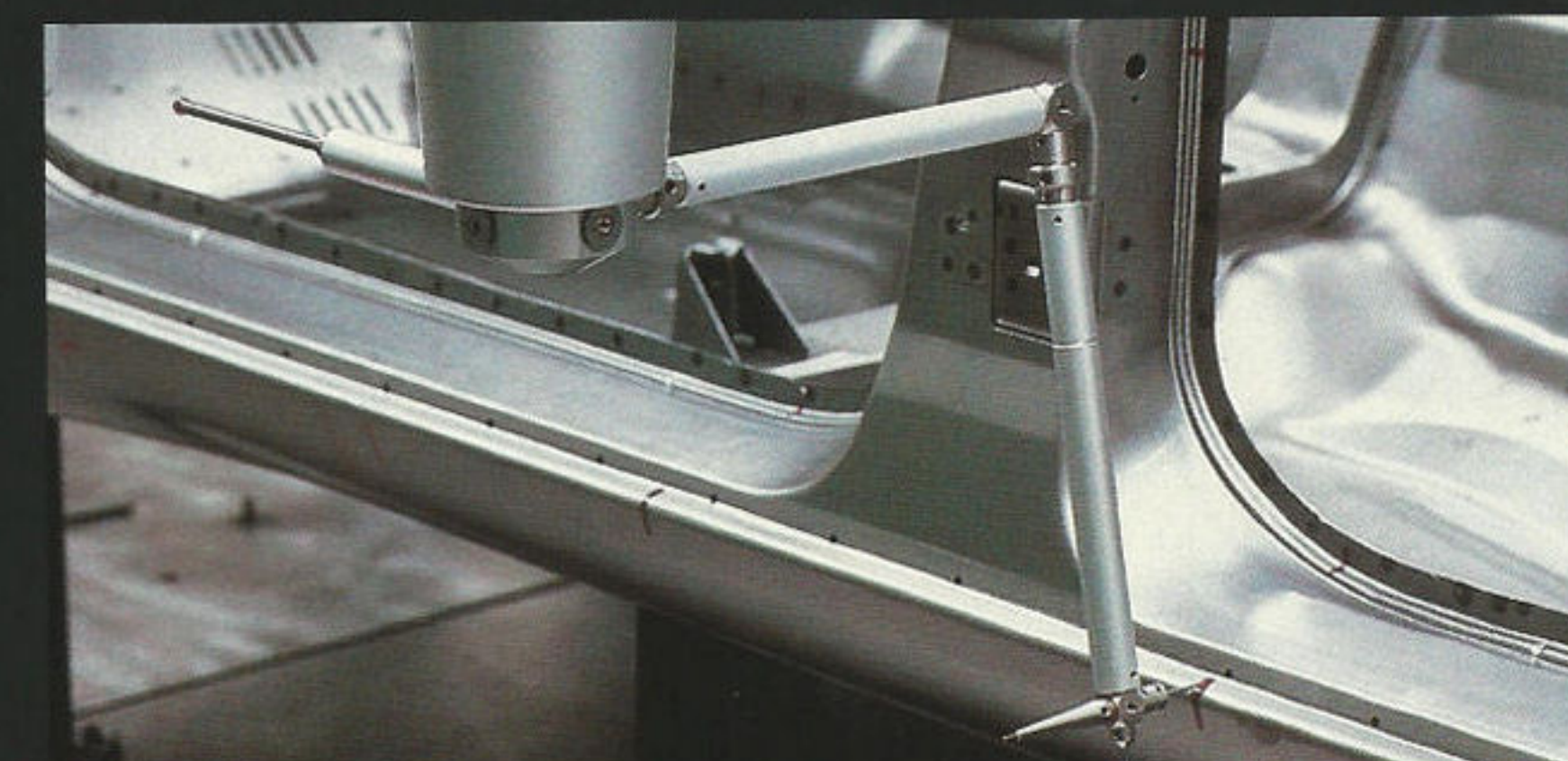
strategy has been the installation of advanced manufacturing tools. More than 160 robots are used in the assembly of Scorpio.

In one robot operation, robots fit the doors within their proper openings and *then* permanently weld the hinges in place, effectively preventing any degree of misalignment.

Equally important has been the implementation of Statistical Process Control (SPC) techniques. Graphic charting systems are used to monitor critical dimensions or other criteria of finished parts. By this means operators and managers are able to detect process changes and provide feedback corrections to ensure continuous production at the highest levels of quality.

CHECKED AND RECHECKED. As each Scorpio emerges from the manufacturing area it is subjected to a series of visual and electronic tests to double check that all is in order. There's a rolling road to check engine, brake and gearbox performance. Then a complex check of electrical and electronic components. A computerized control system is plugged into each car's electrical system and checks the performance of 80 different components.

In a separate electronic test, the Anti-lock Brake System undergoes its own careful check. These checks prior to the vehicle's release conclude a systematic quality control process that follows Scorpio throughout the manufacturing operation. Thorough and precise, it represents a commitment to achieve the very highest standards of production quality.



Bodywork precision is ensured by a sensitive tracing head capable of measuring body contours to within three thousandths of a millimeter.

SPECIFICATIONS

1988 MERKUR SCORPIO SPECIFICATIONS

Vehicle type: five-passenger, four-door hatchback sedan

DIMENSIONS:	
Wheelbase (in.):	108.7
Track (in.) front:	58.1
rear:	58.1
Length (in.):	186.4
Width (in.):	69.5
Height (in.):	54.6
Curb weight (lb.):	3241 ^a
Weight distribution F/R (%):	52/48
Fuel capacity (gal.):	16.9
Engine oil capacity (qt.):	4.5
Cargo space (cu. ft.) rear seatback up:	19.7
rear seatback down:	37.2

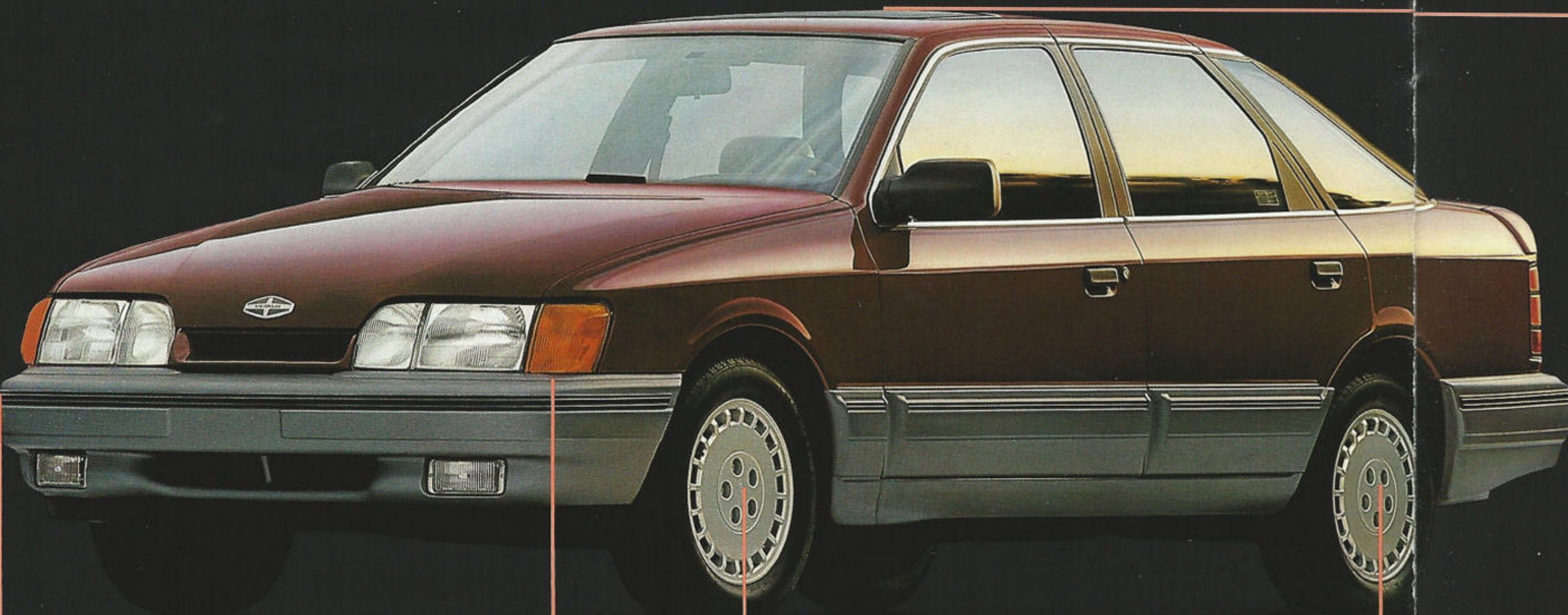
ACCOMMODATIONS:		
Headroom (in.)	front:	38.0 ^b
	rear:	37.6 ^b
Legroom (in.)	front:	41.3 ^c
	rear:	38.6 ^d
Hiproom (in.)	front:	55.6
	rear:	46.3
Shoulder room (in.)	front:	56.4
	rear:	56.4

ENGINE:	
Layout:	front engine, rear drive
Type:	60 degree V-6 with EEC-IV engine controls
Displacement (liters/cu. in.):	2.9/178.9
Bore & stroke (mm/in.):	93.0 x 72.0/3.66 x 2.83
Compression ratio:	9.0:1
Horsepower @ rpm (SAE net):	144 @ 5500
Torque @ rpm (lbs.-ft. SAE net):	162 @ 3000
Redline (rpm):	5800
Fuel delivery:	multi-port electronic fuel injection
Fuel requirement:	87 octane unleaded minimum
Lbs./hp:	22.5:1

DRIVETRAIN:	
Transmission type:	5-speed manual 4-speed auto
Gear ratios: I:	3.36:1 2.47:1
II:	1.81:1 1.47:1
III:	1.26:1 1.00:1
IV:	1.00:1 0.75:1
V:	0.83:1
axle ratio:	3.64:1 3.64:1

CHASSIS:	
Body:	unit construction with welded stamped-steel panels
Suspension front:	independent with MacPherson struts, lateral links, coil springs, 27mm stabilizer bar
rear:	independent with tubular subframe, semi-trailing arms, coil springs, 16mm stabilizer bar
Steering type:	variable-ratio power-assisted rack-and-pinion
Overall ratio:	12.43:1
Turns, lock to lock:	2.68
Turning circle, curb to curb (ft.):	34.1
Brakes front:	10.2-inch power-assisted ventilated disc
rear:	10.0-inch power-assisted disc
Wheels:	15 x 6-inch cast-aluminum alloy
Tires:	205/60HR15 Pirelli P6 steel-belted radial tires

^a With automatic transmission
^b Without moonroof
^c Maximum
^d Minimum



Burgundy Red.

69.5 INCHES

108.7 INCHES

186.4 INCHES

54.6 INCHES

MERKUR SCORPIO SELECTED STANDARD FEATURES

FUNCTIONAL

- 5-speed overdrive manual transmission
- Variable ratio power-assisted rack-and-pinion steering
- Power-assisted four-wheel disc brakes with ABS
- HR-rated Pirelli P6 steel-belted radial tires
- Cast-aluminum alloy wheels
- Fog lights
- Full analog instrumentation: speedometer, tachometer, fuel gauge and coolant temperature gauge
- Indicator lights for Anti-lock Brake System, oil pressure, high beam, ignition system, handbrake/brake failure, low coolant, low fuel, high engine coolant temperature, low washer fluid and brake pad wear
- Graphic alert module with warning lights for door/liftgate ajar, bulb outage, possible road-icing conditions, and seat belt usage
- 6-speed variable intermittent windshield wipers
- 55 amp.-hr. battery
- 90-amp. alternator
- 15-inch mini spare tire

EXTERIOR

- Integral halogen headlights, parking lights and turn/side marker lights
- 5-mph polyurethane front and rear bumpers
- Polycarbonate bodyside protection cladding
- Tinted glass

CONVENIENCE

- Electronic AM/FM stereo cassette radio with 12-station memory, Dolby,® and power amplifier with six speakers
- Integral backlite radio antenna
- Electronic Automatic Climate Control system
- Heat and air conditioning airflow control for rear seat passengers
- Speed control
- Power windows
- Power central door locks
- Remote electric fuel door release
- Footwell courtesy lights with time delay
- Overhead console with courtesy light, dual map lights, and digital clock with month/date, elapsed time and ambient outside temperature
- Rear overhead courtesy light and dual map lights
- Headlight delay function (45 seconds)
- Electrically adjustable heated outside review mirrors
- Electric rear window defroster
- Rear window wiper with reverse gear interlink and window washer

INTERIOR

- Cloth upholstery
- Power adjustable front bucket seats with manually adjustable reclining seatbacks, seatback wedges, lumbar and thigh supports
- 4-way manually adjustable front and rear headrests
- 60/40 split fold down rear seat with power recline feature
- 4-way adjustable sport steering wheel
- Front and rear center armrests
- Front and rear three-point safety harnesses and rear center seat lap belt
- Side window demisters
- Illuminated passenger-side visor vanity mirror
- Center console
- Authentic wood appliqué on right side of instrument panel
- Map pockets on backs of front seats
- Front door storage bins
- Cargo compartment tie-downs

OPTIONS

- 4-speed automatic overdrive transmission
- Power tilt/slide screened moonroof
- Metallic paint (No extra charge)
- Touring Package:
 - Leather upholstery
 - Fuel computer
 - Power tilt/slide screened moonroof

EXTERIOR AND INTERIOR COLORS*

Black with Raven interior.
 Diamond White with Raven interior
 Burgundy Red with Raven interior
 Ivory with Taupe interior
 Regency Red Metallic with Raven interior
 Strato Silver Metallic with Raven interior
 Blue-Gray Metallic with Raven interior
 Crystal Blue Metallic with Raven interior
 Raven Metallic with Raven interior
 Chestnut Metallic with Taupe interior
 Sand Gold Metallic with Taupe interior

*Leather or cloth

WARRANTY

Scorpio is protected by a 6-year/60,000-mile powertrain and 6-year/100,000-mile corrosion warranty. Restrictions and deductibles apply. Ask to see this warranty at your Lincoln-Mercury-Merkur dealer. Selected parts of the following systems are covered:

- Engine
- Transmission
- Rear-wheel drive
- Engine cooling and fuel
- Steering
- Front suspension
- Brakes
- Air conditioning
- Electrical
- Electronic components

SERVICES



You can have coverage on certain selected components on new Merkur cars for longer than the basic warranty. The cost is nominal, so it could pay for itself the first time needed. Ask a dealer for complete details on the Extended Service Plan, available on cars sold and normally operated in the 50 states and Canada.



Participating Lincoln-Mercury-Merkur dealers offer to guarantee their service work on your Merkur for as long as you own it. This Lifetime Service Guarantee means that you pay for a covered repair only once. If it ever has to be fixed again, the repairing dealer will fix it free. Free parts. Free labor. And it doesn't matter where the car was purchased.

This limited warranty covers vehicles in normal use. The only items not covered are routine maintenance parts, belts, hoses, sheet metal and upholstery. Ask your dealer to show you a copy of the Lifetime Service Guarantee.

PAID REPAIR PROGRAMS AFTER THE WARRANTY PERIOD

Sometimes Ford Motor Company offers adjustment programs to pay all or part of the cost of certain repairs. These programs are intended to assist owners and are in addition to the warranty or to required recalls.

TECHNICAL SERVICE BULLETINS

All vehicles need repairs during their lifetime. Sometimes Ford issues Technical Service Bulletins (TSBs) and easy-to-read explanations describing unusual engine or transmission conditions which may lead to costly repairs, the recommended repairs and new repair procedures. Often a repair now can prevent a more serious repair later.

Ask Ford Motor Company or a Lincoln-Mercury-Merkur dealer about Ford-paid repair programs and TSBs relating to your Merkur.

To get copies of materials for your Merkur, call Ford toll-free at 1-800-241-3673.

In Alaska or Hawaii, call 1-800-243-3711.

In Georgia, call 1-800-282-0959 or write Ford at Ford Customer Information System, Post Office Box 95427, Atlanta, GA 30347. Please include your name, address, vehicle make, model, year and vehicle identification number.

IS LEASING FOR YOU?

There may be considerable advantages in leasing a new Merkur Scorpio.

Leasing can free up your capital and may reduce your monthly cash outlay. If the car is used for business, tax records may be simplified. A Lincoln-Mercury-Merkur Dealer Leasing Association member can help design a lease program that is exactly right for you.

Specifications and descriptions used were in effect when this publication was approved for printing.

Lincoln-Mercury-Merkur reserves the right to discontinue options at any time, or change specifications, equipment or designs without notice and without incurring obligation. Standard and optional equipment listed is subject to change. Some features described are optional at extra cost. Some options are required in combination with other options. Availability of some features may be subject to a slight delay.

Refer to the Merkur owner's manual for specific service requirements and added operations related to severe service applications.

BLACK

DIAMOND WHITE

BURGUNDY RED

IVORY

SAND GOLD METALLIC

CHESTNUT METALLIC

CRYSTAL BLUE METALLIC

RAVEN METALLIC

BLUE-GRAY METALLIC

STRATO SILVER METALLIC

REGENCY RED METALLIC

THE MERKUR COMMITMENT

The uncompromising commitment that goes into every Merkur does not end when the car leaves Germany. On the contrary, it is then that the most crucial stage begins: assuring that each owner is satisfied; assuring that owning, driving, and servicing a Merkur is a totally pleasurable experience.

To attain that assurance, the Merkur Commitment begins when each Merkur reaches North American shores. On its arrival at one of five ports, each car is individually inspected and test driven by specialists before it is shipped to the dealer. By the time a Merkur arrives at a dealership, it already has undergone extensive port-side testing to confirm its high quality standards.

Once at the dealership, each car again is inspected, test driven, and given its final preparation before it is shown to potential customers.

Every Merkur dealership has been carefully selected to assure that it maintains the highest quality standards in its sales and service operations.

To ensure that parts are readily available, a national parts distribution center and eight regional parts centers have been established. Another important part of the Merkur Commitment provides for direct communication with key Ford Parts and Service Division personnel through an 800 number.

Every Merkur owner is issued an owner identification card with the 800 number, which should be used if service-related problems arise.

Centrally based product coordinators then will contact the nearest field owner relations manager so the problem receives top priority.

The Merkur Commitment, essentially, is the assurance that owning and driving a Merkur will be a pleasurable and fulfilling experience for as long as you have the car.

Buckle up—together we can save lives.

Lincoln-Mercury-Merkur

