



**Three New Chevrolet Models**

Faint, illegible text, possibly bleed-through from the reverse side of the page. The text is arranged in approximately 20 horizontal lines.

Small, faint handwritten mark or signature.

**Among those who desire a high degree of smartness and individuality in their personal cars, the de luxe sport type of automobile is enjoying especially high favor . . . Chevrolet now brings this type to the low price field in three striking new sport models. There is a trim, dashing convertible coupe with rumble seat, a distinctive landau phaeton for five, and a charming five passenger coupe . . . In these new models, all with bodies by Fisher, a new order of quality, luxury and individuality has been established in the field of low priced cars . . . Their long, flowing lines are accented by fashionable new body contours. A happy new harmony of color adds a pleasing note of charm. Both exteriors and interiors are complete with many new style effects—many new items of de luxe equipment. In fact, low as these cars are in price, they bear the stamp of custom car character and distinction throughout.**



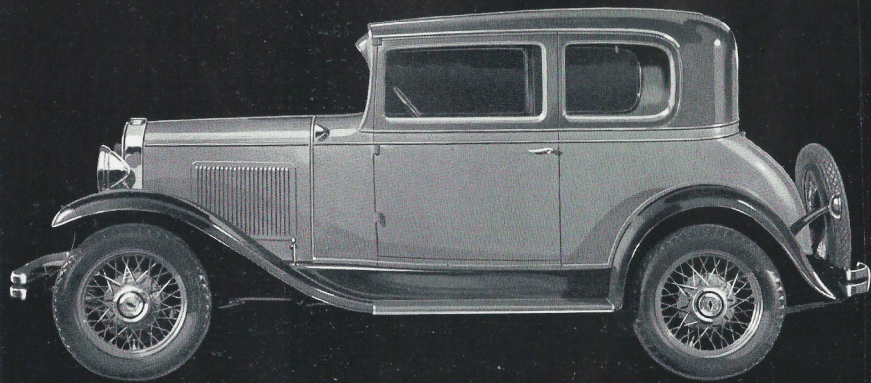
**CHEVROLET**

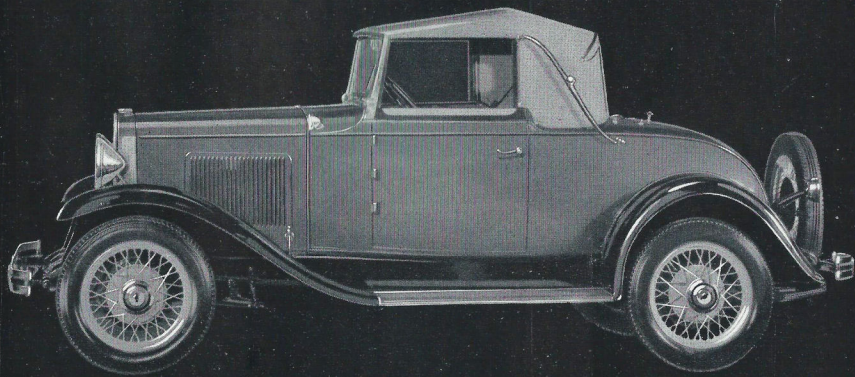
## **Five Passenger Coupe**

**-A five passenger two door enclosed car of the close-coupled type, with the sport treatment carried throughout. Its Fisher body has the same practical seating arrangement as in a conventional two door sedan, thus affording abundant leg room for all passengers. Among the special features of this model are rich broadcloth upholstery, assist cord, ash tray, arm rests, and a chrome plated radiator grille and cowl lamps. Five wire wheels are standard equipment.**

**Price \$595**

*f. o. b. Flint, Michigan,  
special equipment extra*





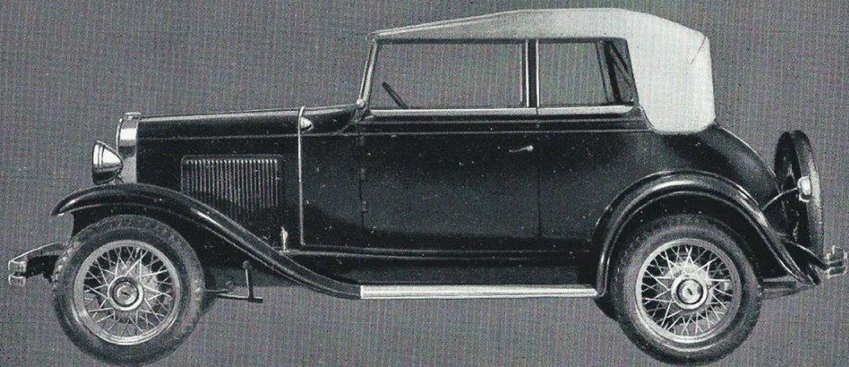
## **Convertible Cabriolet**

**—A smart combination of style and utility. With the top raised, it is a comfortable enclosed coupe; with the top lowered, it becomes a racy open roadster. The distinctive Fisher body has a rumble seat for two. Landau irons, window and windshield frames, radiator grille and cowl lamps are chromium plated. Windshield folds forward. Interior features include leather upholstery, special sport instrument panel, and adjustable driver's seat. Five wire wheels are standard.**

**Price \$615** *f. o. b. Flint, Michigan, special equipment extra*

**The Landau Phaeton**  
— A new version of the convertible touring car. The two door 5-passenger Fisher body is smart and modish in line, yet highly practical and convenient. The side windows operate by regulators and can be quickly lowered to change from a snug sedan-type car to a smart open model. The fleet, graceful contours feature a new rakish effect in rear. The windshield folds forward. Arm rests, ash trays, space for packages, chrome plated radiator grille and cowl lamps.

**Price \$650** *f. o. b. Flint, Michigan,  
special equipment extra*



**GENERAL MOTORS CARS HAVE OUTSTANDING VALUE**

