

A COMPLETE LINE OF
GENUINE CHEVROLET
ACCESSORIES



Genuine

CHEVROLET

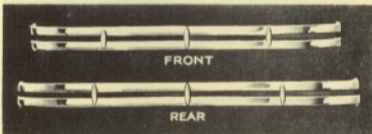
ACCESSORIES

FINER QUALITY

CHEVROLET
LOWER COST



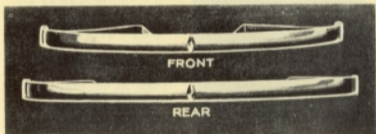
DOUBLE BAR BUMPER



Double Bar Bumpers are manufactured of the highest grade material. They present the utmost in protection combined with smart appearance. Fender guards are optional on the rear. Price per set, \$20⁰⁰ installed



SINGLE BAR BUMPER



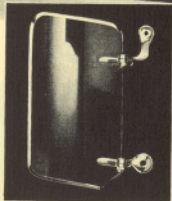
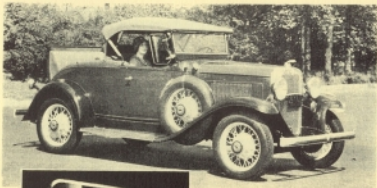
A beautiful, serviceable, fully chromium-plated accessory, designed especially for Chevrolet's beauty and durability. They are especially desirable for Sport and De Luxe models. Price \$20⁰⁰ per set, installed

CHECKED AND APPROVED BY CHEVROLET DESIGNERS AND ENGINEERS

Genuine

CHEVROLET ACCESSORIES

FINER QUALITY
CHEVROLET
LOWER COST



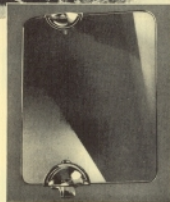
WIND WINGS

(for open models)

Made of the finest polished plate glass, with chrome-plated fittings. With these Wings installed no inconvenience of

annoying breezes need prevent the Chevrolet open car owner from enjoying the fresh air in comfort. Easily and quickly installed by anyone, and a most practical, as well as attractive, addition to the car. The brackets are so designed that they appear to be an integral part of the chromium plating which borders the windshield.

Adjustable to any angle desired. Price per pair..... \$900



WIND WINGS

(for closed models)

These wind wings are made of the finest quality polished shatter-proof plate glass and are exceptionally efficient.

With them installed on the car, it is not necessary for the occupants to breathe hot, stuffy, stale air while driving in rain or on a dusty road. They are designed to improve and harmonize with the beauty of the Chevrolet Six. The wind wings can be installed in five minutes' time. No tools required except a small set screw wrench which comes packed in each set. Price per pair, installed..... \$1250

CHECKED AND APPROVED BY CHEVROLET DESIGNERS AND ENGINEERS

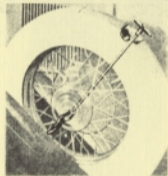
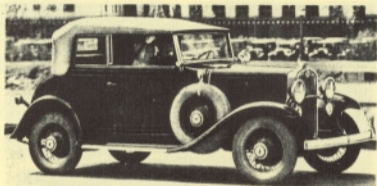
Genuine

CHEVROLET ACCESSORIES

FINER QUALITY



LOWER COST



Fender Well Tire Lock

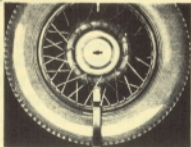
This Lock is neat in appearance and easily installed. It is attached at the base of the fender well brace rod and projects out over the rim of the wheel. Price \$5.00 per pair.....

5.00

Rear Tire Lock

The Rear Tire Lock, which is of the band type, surrounds and locks the tire as well as the wheel. This lock makes a desirable necessity for rear tire carrier installations. Price each, \$2.50 installed.....

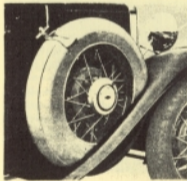
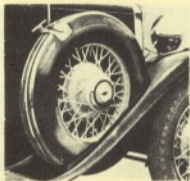
2.50



Tire Covers

The new Metal Tire Cover has a handsome tread of polished rustless iron. It is of one-piece design and is quickly put on and taken off the tire with utmost ease. If desirable, it can be locked on the tire with a small lock. Price each, in- \$6.00 stalled.....

6.00



The De Luxe Tire Cover is made of excellent quality heavy-bodied material of a tan color which matches the top material on the open and convertible models. It is especially adaptable to De Luxe model cars when smartness is desired. Price each, \$2.50 installed.....

2.50

The Standard Tire Cover is of black pebble-grain pyroxylin-coated fabric of a high grade. With its handsome embossed Chevrolet emblem it makes a neat, smooth-fitting covering for the tire. Price each, in- \$1.00 stalled.....

1.00



CHECKED AND APPROVED BY CHEVROLET DESIGNERS AND ENGINEERS

Genuine

CHEVROLET ACCESSORIES

FINER QUALITY
CHEVROLET
LOWER COST



Matched Horns

Any 1931 Chevrolet passenger car can be equipped with a pair of beautifully toned Matched Horns by adding one additional horn. The tone of this second horn harmonizes with the one already on the car, giving the clear, distinct, harmonious effect which is so popular. Both horns are of high frequency, the body is black with an attractive chromium-plated face which is in keeping with the two head lamps, radiator grille, and tie bar. They are so designed that water, ice, or snow will not affect their efficiency. The second horn is mounted just below the right head lamp, thus presenting a balanced appearance which adds to the smartly designed front end of the car. Price each, plus installation . . . **\$4.10**

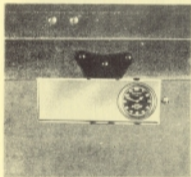


Tire Mirror

These Tire Mirrors with four-inch glass add smartness to the car and at the same time provide more driving convenience and safety. Available for metal tire covers and for fabric covers.

For Metal Tire Covers— **\$3.50**
Price each, installed . . .

For Fabric Tire Covers— **\$5.00**
Price each, installed . . .

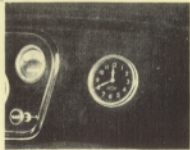


Mirror Clock

This rear view Mirror Clock is a thirty-hour clock, manufactured especially for the Chevrolet Motor Company by the Phinney-Walker Company. The face of the mirror provides the crystal for the clock. This mirror is of gun metal finish, which makes it glare-proof. Price each, **\$3.75** installed

Electric Clock

This Chevrolet Sterling Electric Clock works from the battery and uses about as much current in three years as a tail lamp bulb would in a few hours. It can be conveniently mounted on the instrument panel by drilling only a 1/2-in. hole. It is guaranteed for **\$8.75** a year. Price each

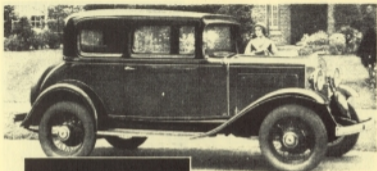


CHECKED AND APPROVED BY CHEVROLET DESIGNERS AND ENGINEERS

Genuine

CHEVROLET ACCESSORIES

FINER QUALITY
CHEVROLET
LOWER COST



Eagle Radiator Cap

The ornamental Cap typifies the speed and strength of the Great American Value. It attaches on the radiator in the same convenient manner as does the regular cap which comes on the car. Price each, in-
stalled **\$350**

Thermostat



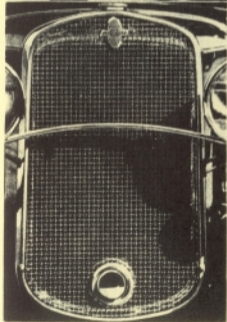
The Genuine Chevrolet Thermostat is especially useful in warming up the motor quickly, which prevents excessive crankcase dilation, assuring efficient motor operation. **\$200**

Price each, installed

Viking Radiator Cap



The graceful streamlines of this chromium-plated ornament blend perfectly with the contour of the Chevrolet car. It opens easily and locks to prevent theft. **\$350**
Price each, installed



Radiator Grille

Particularly adaptable for owners who wish to convert their cars into De Luxe models. It is of distinctive design and chromium plated to match the radiator and head lamps and is an appropriate complement to the beauty of the 1931 Chevrolet. It protects the radiator core from flying stones and other foreign objects. It is securely attached to the radiator shell and is provided with rubber bumpers at the sides to insure **\$750** quietness. Price . . .

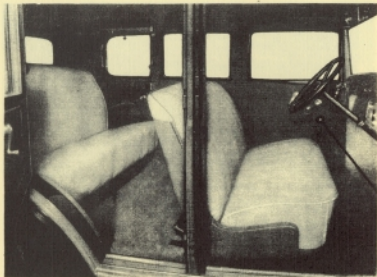
✓ CHECKED AND APPROVED BY CHEVROLET DESIGNERS AND ENGINEERS ✓

Genuine

CHEVROLET

ACCESSORIES

FINER QUALITY
CHEVROLET
LOWER COST



Genuine Chevrolet Seat Covers

The finest Seat Covers on the market. Perfect in fit—perfect in style—perfect in service and protection—very easily installed. Available in two qualities of material, both identical as to tailoring and construction, as follows:

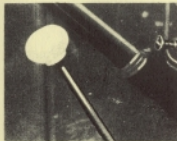
Genuine Laidlaw Material for seat cushions and seat backs for 1929, '30 and '31 models.

- Coach—blue pattern \$14.00
- Coupe—blue or brown pattern 7.50
- Sedan—blue or brown pattern 14.00
- Lan. Phaeton—brown pattern 14.00
- 5-Pass. Sedan—brown pattern 14.00

Gray dobby weave for seat cushions, backs, and side panels for 1928, '29, '30 and '31 models.

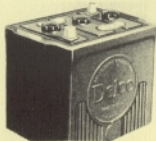
- Coach \$11.85
- Coupe 6.85
- Sedan 12.85

(Especially adaptable to improve the appearance of used cars.)



Catalin Gearshift Ball

The rich, translucent coloring of this handsome Gearshift Ball adds smartness and good taste to the interior appointments and furnishings of the car. It is indestructible. Price each **50c**



Battery

A 13-plate, 90-ampere hour Battery, constructed throughout of the highest quality materials best fitted to render the severe service required of an automobile battery. \$870
Price each, installed **\$870**



5-Ply Windshield Wiper Blade

Five plies of rubber make up the wiping surface of this Blade, assuring exceptionally long life. Three separate surfaces are in contact with the glass on each stroke. Price each **35c**

Smokerkit

Instrument panel ash receiver and wireless lighter. Finish corresponds with panel. Installed by means of screw clamp at rear of \$250 instrument panel. Price each, installed . . . **\$250**



Body Polish

A high-grade Body Polish, especially prepared for the beautiful Duco finish on Chevrolet automobiles. Retains the original high lustre on the body. Price per can **75c**



CHECKED AND APPROVED BY CHEVROLET DESIGNERS AND ENGINEERS

**CHEVROLET
ACCESSORIES
ARE
DESIGNED
—CHECKED
BY
CHEVROLET ENGINEERS**



The Chevrolet Motor Company has carefully designed, checked, and selected accessories which harmonize with the beauty of the 1931 Chevrolet. This assures the Chevrolet owner being able to buy accessories that are designed with the same care and manufactured with the same precision that is given to the design and manufacture of Chevrolet cars.



These accessories will appeal to every discriminating Chevrolet buyer. They offer him the opportunity to show his own individuality in the selection of added touches of refinement and luxury for his car.

This interesting booklet illustrates one of the most complete and attractive lines of accessories ever offered by the Chevrolet Motor Company. The materials used in these accessories are of the highest and finest quality, and the most modern manufacturing methods and machinery are used in turning them out. They are sold at remarkably low prices which is made possible by volume production and centralized buying. And every Chevrolet owner and dealer, when buying these Genuine Chevrolet Accessories, has the assurance that they have been approved by the same engineers who designed the beautiful Chevrolet cars.