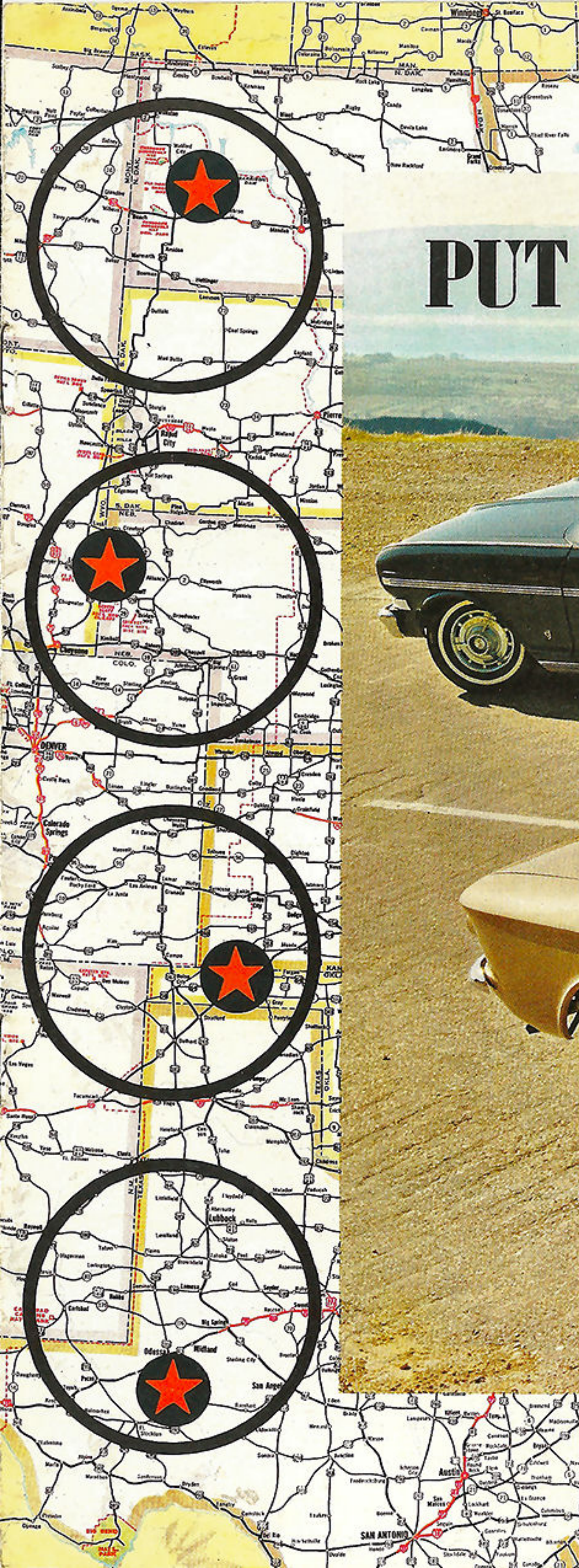


PUT MORE GO IN YOUR SUMMER GOING!



Shown on cover: Nova 400 Super Sport Coupe in Monaco Blue and Monza Spyder Convertible in Saddle Tan.



Nova 400 4-Door 6-Passenger Station Wagon in Silver Blue with Roof Luggage Carrier*.

GET MORE ROOM FOR ROAMING IN THE LOW-COST CHEVY II

When the wide-open spaces beckon, turn your thoughts to Chevy II. Its clean, classic design lets you ride the trail in luxury you'd never expect from a car at this low price. And don't let Chevy II's trim, maneuverable exterior dimensions fool you. Inside, where it counts, roominess abounds. Wide sofa-soft seats allow comfortable room for every member of the family. Of course, smooth ride is a Chevrolet trademark . . . and Chevy II shines here.

Mono-Plate rear spring suspension irons out the roughest road, cradles you in comfort. Chevrolet quality is evident in such features as Body by Fisher, self-adjusting Safety-Master brakes, battery-saving Delcotron generator, single-key locking, electric windshield wipers, and glove box lock. Pick from two efficient engines, available in most models: a gas-stretching 90-hp four and a sparkling 120-hp six. Go Chevy II and make that trek a treat.



Monza Club Coupe in Ember Red.

ENJOY MORE FUN ON FROLICS WITH SPORTY CORVAIR

Every jaunt becomes a joy with Corvair. Its responsive handling, agile cornering and precise steering are strictly in the sports car class. Yet Corvair serves up family-sized portions of room and comfort. Sample Corvair's ride. Quadri-Flex 4-wheel independent suspension soaks up bumps big and small. Choose from six models in three series: Monza, 700 and 500 . . . plus two versatile Greenbrier Sports Wagons. Every Corvair comes equipped with

a host of extra-value features. Big air-cooled Safety-Master brakes can adjust themselves automatically. A single key works for doors, ignition, glove box and luggage compartment. Parallel-action electric windshield wipers maintain a steady speed. As for Monza richness: standard equipment includes front bucket seats, plush all-vinyl interiors, deep-twist carpeting and special wheel covers. Makes that low price hard to believe, doesn't it?



NAME THE CITY*

**It's the largest city in the Pelican State and one of America's leading industrial and trade centers. Busiest port in the South, the city is divided in two sections by the longest river in the nation. Tulane University and the Sugar Bowl are well-known landmarks. Thousands of visitors come to attend the gala Mardi Gras celebration held here each year. A key tourist attraction is the famed French Quarter. Birthplace of Dixieland Jazz, the city is ...*

New Orleans, Louisiana

AFTER ALL-OUT DRIVING PLEASURE? REAR-ENGINE CORVAIR GIVES IT IN FULL MEASURE

Many of Corvair's popular ways can be credited to its rear-engine design. First big benefit you'll notice is the virtually flat floor inside. Unipack power team combines engine and transaxle in the rear, eliminating the need for a room-robbing transmission tunnel. Once you get rolling, other rear-engine advantages become apparent. Nearly ideal weight distribution is the reason. Less load on the front wheels allows feather-light steering; more weight in the rear gives Corvair superb traction. No wonder Corvair has earned a reputation for getting through where other cars bog down. Even greater traction can be had with the

optional Positraction rear axle* that transmits power to the wheel with the grip. Corvair's air-cooled aluminum engine stretches gas mileage and ends the costs of seasonal cooling system maintenance. Spyder option*, available on Monza Coupe or Convertible, adds extra sports appeal with its 150-hp Turbocharged 145 engine and special instrumentation including tachometer. Choose the transmission that's tailored to your taste. 3-Speed Synchro-Mesh is standard, with Powerglide* or 4-Speed Synchro-Mesh* available. Altogether, Corvair is tough to match for action, traction, satisfaction.

*Optional at extra cost.



Monza Convertible in Ermine White.



Monza 4-Door Sedan in Palomar Red and Corvair 700 4-Door Sedan in Laurel Green.



NAME THE CITY*

**This important Pacific Coast sea-port is one of the nation's most scenic major cities. Nearby is the main campus of the largest university in the country, the only university in the world with 11 Nobel Prize winners on its staff. The city is a foremost banking, insurance, communications and financial center. In the area are two of the longest and finest bridges in America. A main point of interest is the city's large Chinatown. Known throughout the world for its fine eating places, the city is ...*

San Francisco, California

WHATEVER YOUR VACATION PLANS, THERE'S A FAMILY-STYLED CHEVY II READY FOR YOU AND YOUR BUDGET

No matter what your particular driving needs may be, it's easy to match up the right Chevy II. You'll find ten different models in three series: Nova 400, Chevy II 300 and 100. The wide range of choices covers a convertible, sport coupe, 2- and 4-door sedans plus 2- and 3-seat station wagons. Top-of-the-line Nova 400 models boast such appointments as deep-twist carpeting, foam-cushioned front *and* rear seats, elegant color-keyed interiors and back-up lights. For still more luxury and sporting touches, specify the Super Sport option*, available on Nova Sport Coupe and Convertible. This package includes individual front bucket seats, tasteful all-vinyl

interior, special instrumentation, wheel covers; also a floor-mounted shift lever and console panel when ordered with optional Powerglide* transmission. If your fancy runs to wagons, you need look no further than the spacious Chevy II. Loads of room for kids or cargo. Seats fold flat in a jiffy to convert passenger space to load space. Power-operated rear window comes standard on the 3-Seat Chevy II 300 Wagon, optional* on Nova 400 and Chevy II 100 Wagons. Add to your enjoyment with pleasure-packed Options* and Custom Features* like new all-transistor radios, improved air conditioning, power steering, power brakes and Positraction rear axle.

*Optional at extra cost. Check your Chevrolet dealer for exact model availability.



Nova 400 Convertible in Laurel Green.



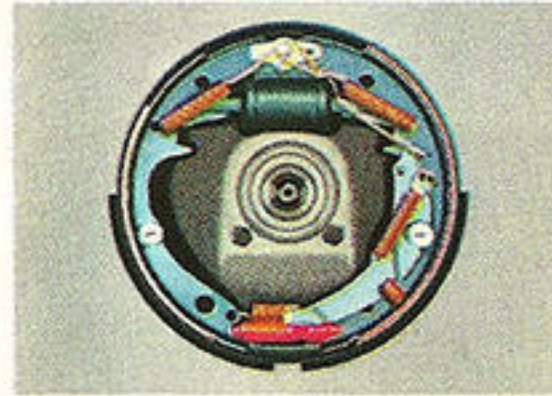
NAME THE CITY*

**This famous resort is the third largest city in Colorado. The area abounds with natural beauty. Nearby, Mount Evans Highway is the highest auto road in North America. Here the world's highest suspension bridge stretches 1,053 feet over the Royal Gorge of the Arkansas River. The region has many military installations, including the United States Air Force Academy. Nestled on the eastern slopes of the Rocky Mountains near famous Pikes Peak, the city is ...*

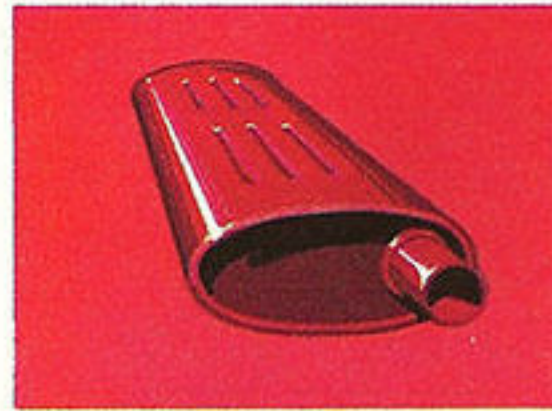
Colorado Springs, Colorado

FULL RANGE OF EASY-CARE FEATURES

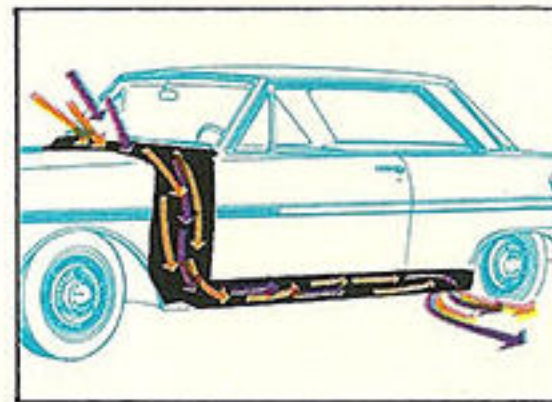
The new Chevy II and Corvair are designed especially to give you the utmost in convenience with a minimum of upkeep. Advance engineering features make maintenance and service simpler, less costly. This is the kind of extra value that's built into every Chevrolet product . . . value that continues to pay you dividends right up through resale.



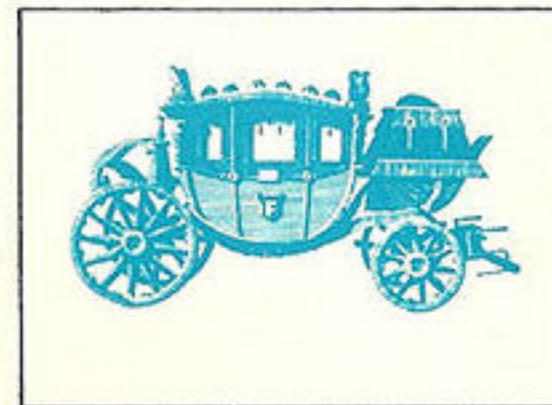
NEW SELF-ADJUSTING SAFETY-MASTER BRAKES eliminate the need for periodic service adjustments. Each time you apply the pedal while backing up, brakes adjust themselves automatically when needed—compensate for normal lining wear.



NEW EXTENDED-LIFE EXHAUST SYSTEM makes liberal use of aluminizing for greatly increased resistance to corrosion. You can benefit from fewer replacements and quiet operation.



NEW FLUSH-AND-DRY ROCKER PANELS are featured on all Chevy II models. Special ventilation system water-flushes and air-dries the inside of rocker panels to help prevent rust formation, maintain good looks.



BODY BY FISHER quality helps make Chevy II and Corvair better buys. Superior workmanship comes from the painstaking care Fisher Body craftsmen devote to every detail, large or small. The tight-fitting parts result in a body that's solid and strong to assure you of many miles of enjoyable motoring. High-Level ventilation provides a steady supply of outside air through inlets located on top of the cowl, high above low-lying dirt, dust and exhaust fumes. Individual vent controls on each side of the passenger compartment regulate incoming air. Magic-Mirror finish keeps its showroom shine far longer with little more care than a car wash. This tough acrylic lacquer resists sun, salt, road tar and chipping.



NAME THE CITY*

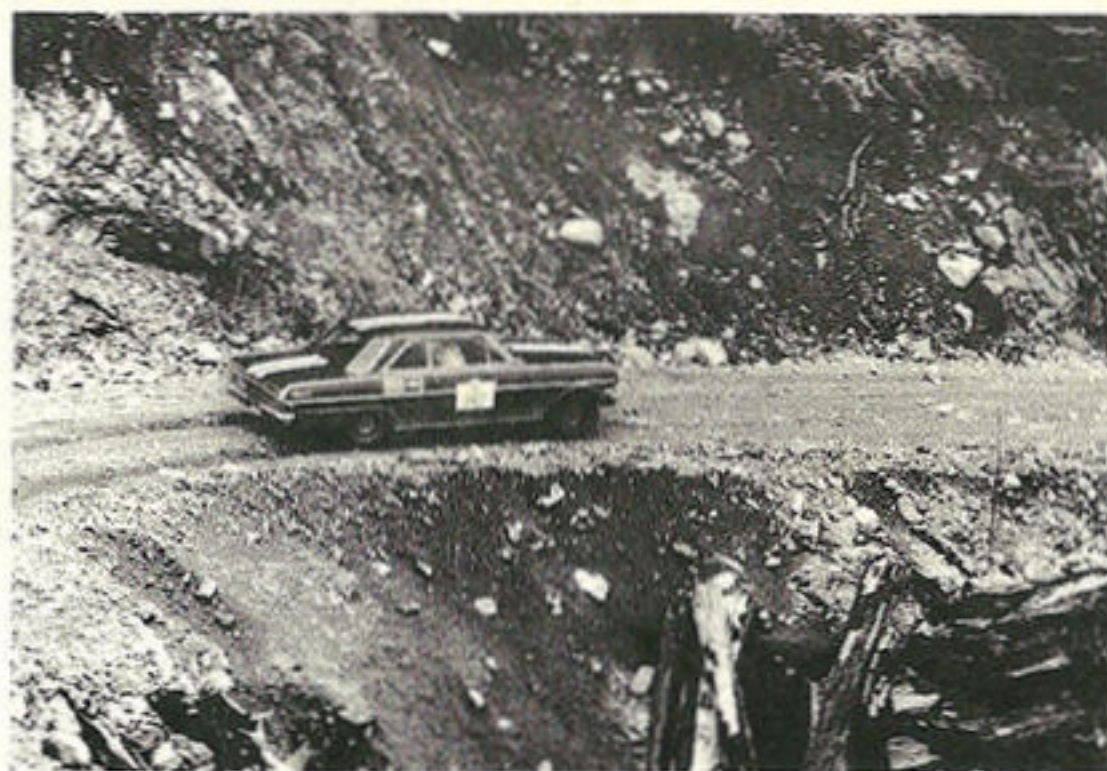
**The world's busiest seaport, this city has been a leader in manufacturing since 1824. Gigantic clothing and fur industries are located here. Recreation facilities include approximately 35,000 acres of city parks and 18 miles of beaches. One of the country's top tourist attractions, this metropolis will host the 1964 World's Fair. Sometimes called "Capital of the World" because it's the home of the United Nations, the city is ...*

New York, New York



CORVAIR AND CHEVY II RUN ONE-TWO IN CLASS A OF 1963 MOBIL ECONOMY RUN. In the grueling 2,500-mile Mobil Economy Run, Corvair led its class for the third consecutive year. A Monza beat all other small-engine compacts with a 27.90* mpg average. Runner-up in the same Class A was a 4-cylinder Chevy II 300 that averaged 27.52* mpg. Although the mileage attained by these finely tuned, professionally driven cars usually is higher than normal, these recent achievements give additional proof that Corvair and Chevy II are leaders in reliability, economy and overall driving performance.

*Data certified true by United States Auto Club.



CHEVY II CAPTURES FIRST OVERALL IN NORTH AMERICA'S TOUGHEST DRIVING CHALLENGE. The Shell "4000" is a 6-day 4,000-mile timed run over Canada's specially selected rally route. A Chevy II placed first *overall*, beating out 46 other crack entries. All cars were specially equipped for rally participation. The Shell "4000" was not a speed contest. Cars had to travel at all times within the set legal limits. Emphasis was strictly on ruggedness, durability and operating efficiency. Chevy II's victory again proves the dependable way it will respond under the toughest conditions.

BULK RATE
U.S. POSTAGE
PAID
DETROIT, MICH.
PERMIT NO. 4719

MAKE YOUR **FIRST** STOP YOUR CHEVROLET DEALER'S
NOW DURING **VACATION TRAVEL TIME!**

