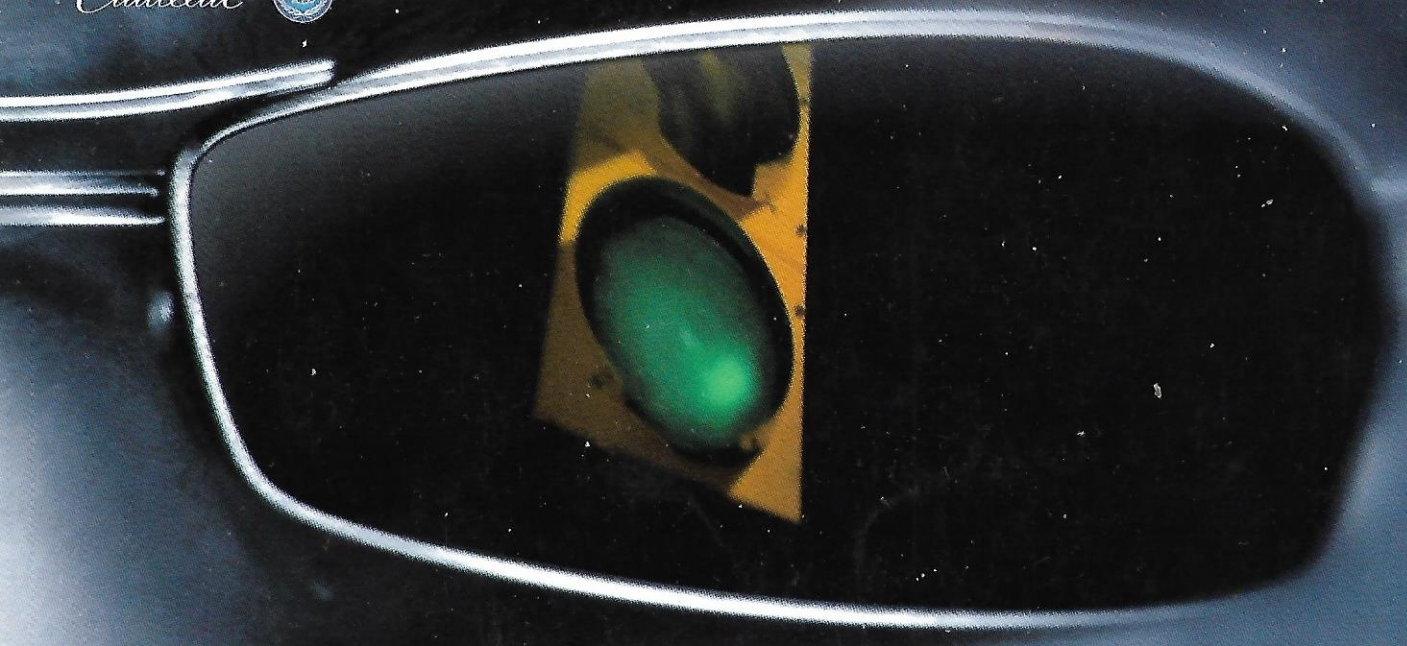


Cadillac



S E V I L L E
S T S • S L S

Cadillac introduced the world's first mass-produced V8 engine, America's first traction control and StabiliTrak, the most advanced integrated stability control system in the world. Now, after 96 years of achievement, the 1998 Seville stands as yet another engineering milestone: our first international luxury sedan designed from concept to concrete to be the best of its kind, anywhere in the world. This Seville is a technological tour de force, vault-solid, Northstar-powerful and ergonomically precise. Virtually nothing has been compromised. Except, perhaps, for the esteem of every other performance luxury sedan on the planet.

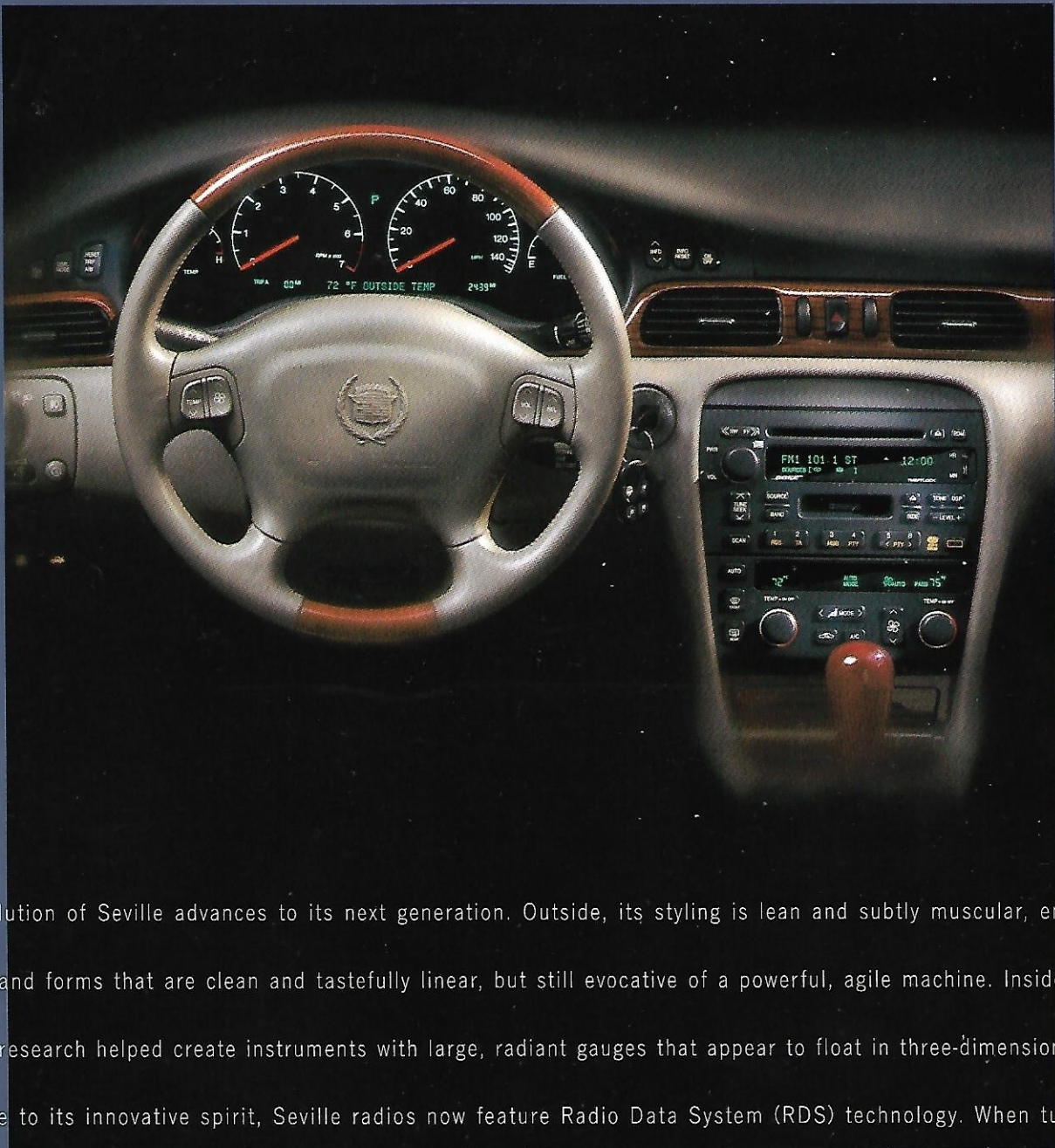


STS

Seville STS Interior

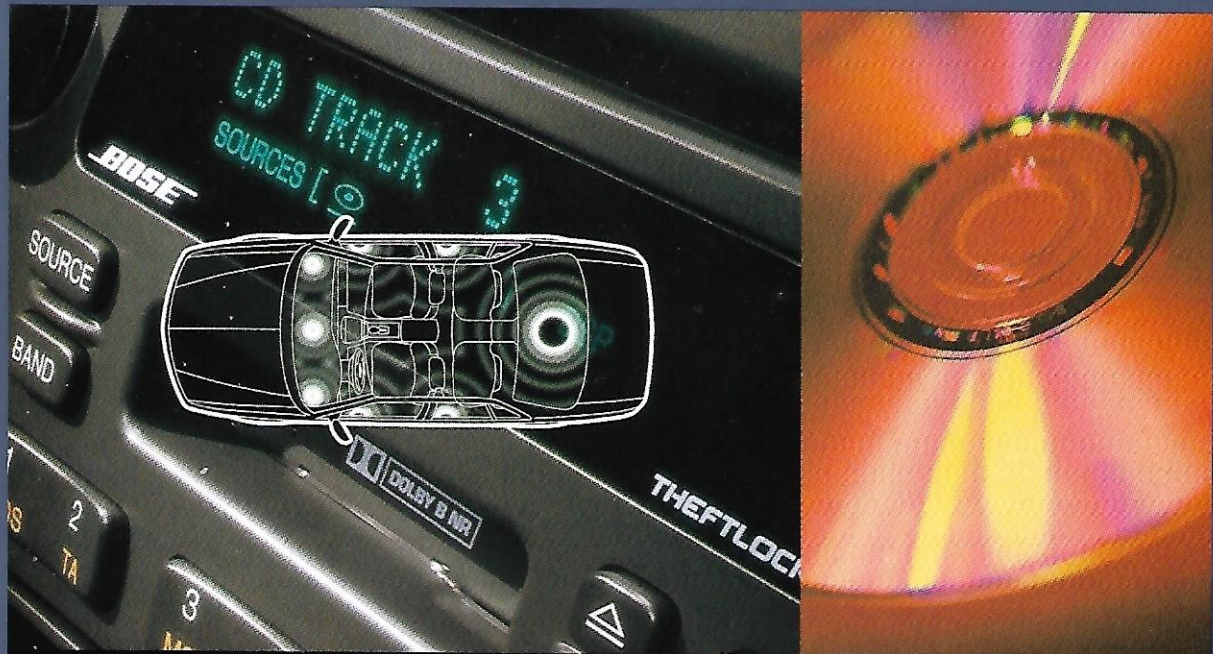






The evolution of Seville advances to its next generation. Outside, its styling is lean and subtly muscular, embodying shapes and forms that are clean and tastefully linear, but still evocative of a powerful, agile machine. Inside, human factors research helped create instruments with large, radiant gauges that appear to float in three-dimensional space. And true to its innovative spirit, Seville radios now feature Radio Data System (RDS) technology. When tuned to a

The Bose Music System

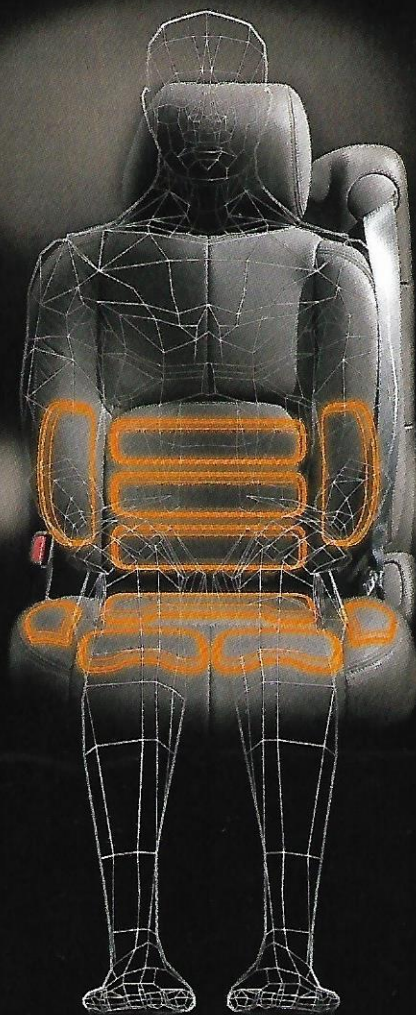


participating FM station, RDS can show song titles or artists' names, scan for your style of music and even keep your favorite program tuned in **98.7 JAZZ** as you travel cross-country. Then there is the 425-Watt Bose 4.0 music system, standard in STS and optional in SLS. Dr. Amar Bose calls it "a new world standard for automotive music systems." The Bose 4.0 system makes use of both acoustics and "psychoacoustics," or the listener's perception of sound. This effect is a result of a computer-generated acoustic blueprint of Seville's interior that allowed audio engineers to tune and strategically locate every component of the Bose 425-Watt system to achieve supremely optimized tonal accuracy and equalization. Even with the windows open, a cabin microphone reads ambient noise, then discreetly increases output only in the ranges being masked. Performance? Perhaps it should be registered with ASCAP and BMI.

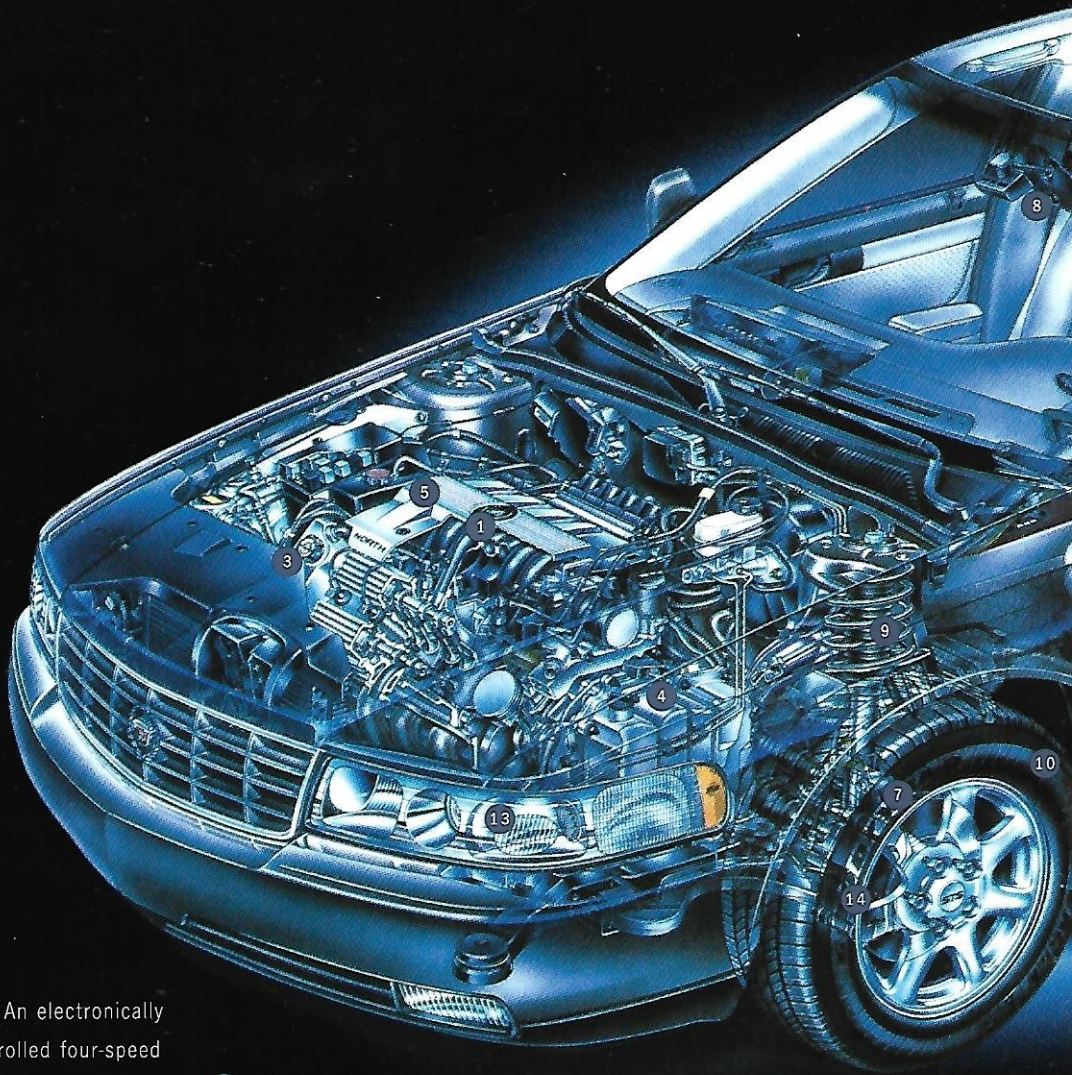
E r g o n o m i c s



Extensive human factors engineering helped Seville to achieve one of the most ergonomic interiors in the world. Near your right hand, the new gated-shifter provides positive positioning, even at night. And for your eyes, interior task lighting was designed to illuminate key areas, not shine in your eyes. In front you will find 26 liters of storage space and a console with tiered stowage design. Available "Adaptive" driver and front passenger seats literally tailor themselves



to your physique, then readjust themselves every four minutes to maintain their settings. How? A computer-linked network of 10 air cells reads body pressure points as you drive. If you change position, specific air cells inflate or deflate to keep your preferred setting. It's fatigue-fighting comfort that's so effective, it is endorsed by the American Physical Therapy Association. And the 1998 Seville is the only car in the world that offers such ergonomic technology.



1 Special Helmholtz tuning chambers have been added to Seville's induction system to help quell noise.

2 Specifically designed stainless steel mufflers and resonators enhance quiet without strangling Seville's rewarding exhaust note.

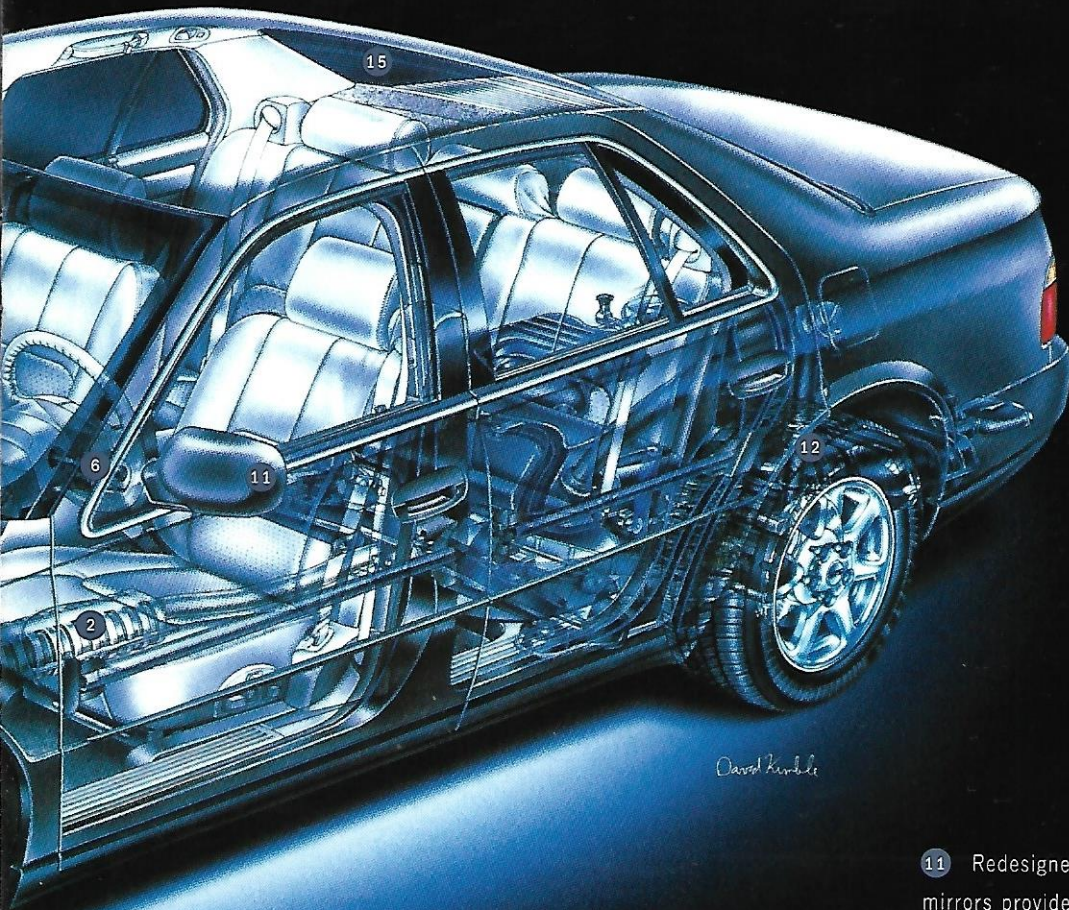
3 A new, high-output generator is mounted directly to the engine block to help reduce vibration. It is liquid-cooled for performance and durability.

4 An electronically controlled four-speed automatic transmission with available Performance Algorithm Shifting tailors itself to your driving pattern. Inside, Dexron transmission fluid is formulated to last the life of the car.*

5 Seville's 32-valve Northstar V8 features dual overhead cams, sequential-port fuel injection, electronic ignition and a scheduled tune-up interval of 100,000 miles.*

6 A power-assisted tilt and telescoping steering wheel makes entry and exit of Seville virtually unrestricted.

7 Aluminum suspension components help reduce unsprung mass and optimize Seville's weight balance.



David Kinch

8 Rainsense wipers automatically activate at the first hint of droplets on the windshield.

9 Continuously Variable Road-Sensing Suspension constantly reads the road surface and instantly adjusts the suspension system for optimum ride and control.

10 Special tires for Seville were created by Goodyear. The available Z-rated design for STS allows it to achieve Autobahn speeds of 150 mph with outstanding grip.

11 Redesigned side mirrors provide greater viewing area without additional wind noise. A "breakaway" feature meets international standards.

12 A compact semi-trailing arm rear suspension allows 34% more wheel travel and rebound, plus optimum interior space for the trunk.

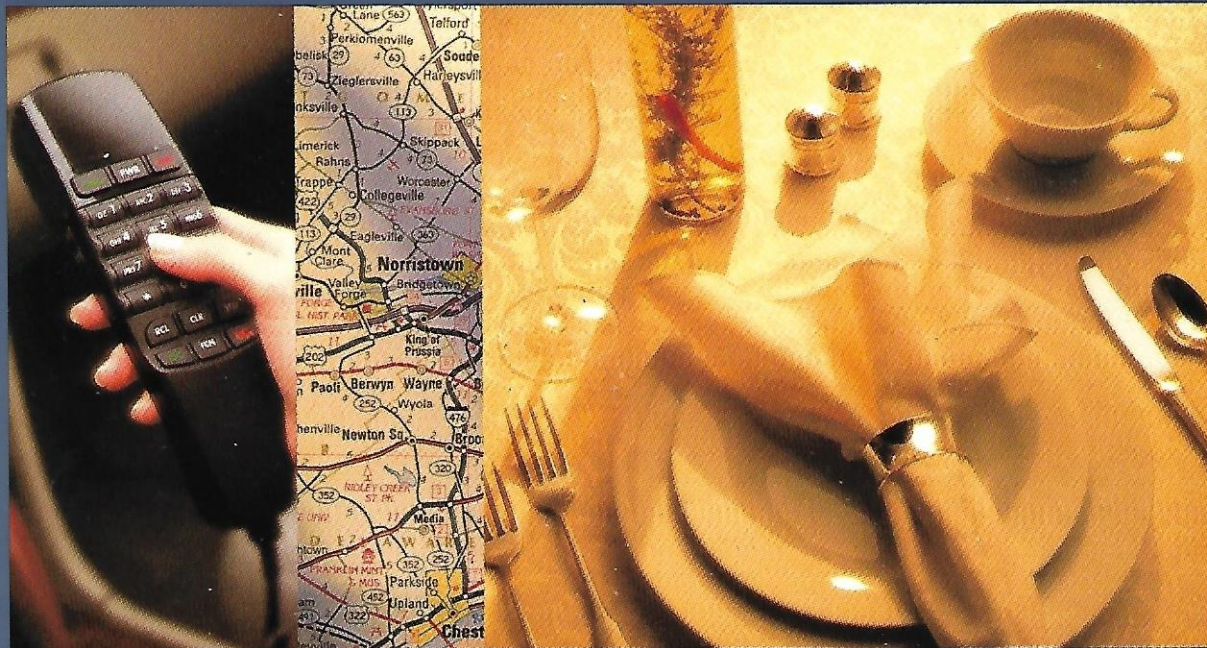
13 Tungsten-halogen "projector beam" headlamps give Seville exceptional driving illumination in any country and any weather.

14 Four-wheel anti-lock brakes and all-speed traction control provide added confidence.

15 Diversity radio antennae are imbedded in the windshield and rear window for improved "two point" reception and greater protection from damage.

*Maintenance needs vary with different uses and driving conditions. See your Owner's Manual for more information.

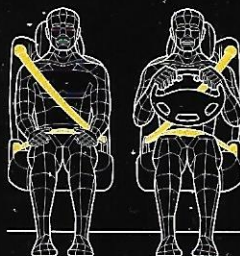
The OnStar System



When the first Cadillac was built, man had yet to achieve powered flight. Today, orbiting satellites help Seville owners find their way in unfamiliar territory. We call this astounding technology OnStar. It's available from participating Cadillac dealers and gives you an outstanding level of safety, security and convenience. Three key elements comprise the OnStar System: a special cellular phone in your Seville, a global positioning system satellite receiver and the OnStar Center, which is manned 24 hours a day, 365 days a year. Searching for route directions, an ATM or the nearest French restaurant? OnStar's database can help. OnStar can even interface with Seville's computer to help diagnose mechanical problems while you're on the road. Should you lock yourself out of your Seville, the OnStar Center can send a cellular data signal to open the doors. And if your Seville is ever stolen, OnStar can use GPS technology to help police track and recover it.

OnStar is like having an executive staff on call to handle it all. In addition, Seville has a vanguard of safety and security systems found in no other competitive luxury sedan in the world.

are mounted directly to the seat and maintain optimum fit by adjustment. In addition, these belts are equipped with special



For example, front safety belts moving with the seat during "pretensioners" that trigger

simultaneously with air bag deployment. They remove slack from the belt and help position the passenger for optimum air bag effectiveness. Beyond dual front Next Generation Air-Bags, Seville goes a step further with two independent, front side-impact air bags. These are also part of the seat and deploy consistently, regardless of seat adjustment position.

Peace of mind is another important consideration for Seville: Its Northstar V8 is capable of traveling up to 50 miles **50.0 MI** without coolant or damage. So, if you ever have a complete coolant loss somewhere south

of Madrid, chances are you can drive to a safe repair location. Under normal conditions, Seville's Daytime Running Lamps enhance safety by providing unmistakable visibility to oncoming traffic. But even before you step into Seville,

its security systems watch over you. The Remote Keyless Entry system locks or unlocks doors from up to 30 feet away with the touch of a key fob button. This signal can also activate interior lights and Seville's exterior perimeter lighting system, making your approach and entry that much more secure. To help assure that your Seville remains where you

park it, a transponder imbedded in the ignition key matches just one of three trillion possible security codes with the powertrain control module. If the system detects a

systems are disabled and your Seville refuses to cooperate.



mismatch, fuel delivery and starter

In Rome, Italy, or Rome, New York.

Features & Options: A Partial List

(STS PERFORMANCE)

0-60 MPH: 6.9 SEC.
TOP SPEED: 150 MPH*
BRAKING: 70-0 MPH: 182 FT.

(SLS PERFORMANCE)

TOP SPEED: 112 MPH
BRAKING: 70-0 MPH: 192 FT.

(ENGINE)

NORTHSTAR 4.6L V8, 32-VALVE DOHC
STS: 300 HP, 295 FT-LBS TORQUE
SLS: 275 HP, 300 FT-LBS TORQUE
INDUCTION: SEQUENTIAL TUNED,
PORT FUEL INJECTION
COOLANT: DEX-COOL, UP TO
150,000 MILES**

(DRIVELINE)

TYPE: FRONT ENGINE, FRONT-WHEEL
DRIVE
TRANSAXLE: ELECTRONICALLY
CONTROLLED 4-SPEED AUTOMATIC
WITH OVERDRIVE

(CHASSIS/SUSPENSION)

SUSPENSION: CONTINUOUSLY
VARIABLE, ROAD-SENSING
STEERING TYPE: RACK-AND-PINION,
MAGNASTEER III SPEED-SENSITIVE
STEERING RATIO: 14.8:1
BRAKES: POWER 4-WHEEL DISC
WITH ABS AND ROAD TEXTURE
DETECTION
STABILITY ENHANCEMENT SYSTEM:
STABILTRAK, ALL-SPEED
TRACTION CONTROL SYSTEM:
ALL-SPEED

(STANDARD & OPTIONAL FEATURES, ABRIDGED LIST)

(SLS STANDARD INTERIOR)

AIR BAGS, FRONT-DRIVER &
PASSENGER, NEXT GENERATION***
SIDE-DRIVER & FRONT PASSENGER
ANALOG INSTRUMENT CLUSTER

AUTOMATIC DOOR LOCKING SYSTEM
CABIN AIR FILTRATION
CHILD SECURITY REAR DOOR LOCKS
CONTROLLED-CYCLE WIPERS
CRUISE CONTROL
DIVERSITY ANTENNA
DRIVER INFORMATION CENTER
EIGHT-SPEAKER SYSTEM WITH
AM STEREO/FM STEREO,
CASSETTE, SINGLE-SLOT CD PLAYER
AND THEFTLOCK
ELECTROCHROMIC INSIDE REARVIEW
MIRROR
ELECTRONIC DUAL-ZONE AUTOMATIC
CLIMATE CONTROL
FINGERTIP STEERING WHEEL CONTROLS
FLASH-TO-PASS HEADLAMPS
FULL FLOOR CONSOLE WITH
GATED-SHIFTER
ILLUMINATED ENTRY SYSTEM
NUANCE LEATHER SEATING AREAS
PASS-KEY III SECURITY SYSTEM
PASS-THROUGH REAR SEAT
POWER FRONT-SEAT ADJUSTERS/
RECLINERS
POWER/HEATED SIDEVIEW MIRRORS
REAR WINDOW DEFOGGER
REMOTE KEYLESS ENTRY SYSTEM
REMOTE TRUNK RELEASE
RETAINED ACCESSORY POWER
SAFETY BELTS, 3-POINT, ALL POSITIONS
TASK-ORIENTED LIGHTING/
READING LAMPS
THEFT-DETERRENT SYSTEM, AUDIBLE
TILT STEERING WHEEL
ZEBRANO WOOD TRIM

(SLS STANDARD EXTERIOR)

ALTERNATOR, HIGH-OUTPUT,
LIQUID-COOLED
AUTOMATIC PARKING BRAKE RELEASE
DAYTIME RUNNING LAMPS
ELECTRONIC LEVEL CONTROL
HEADLAMPS, PROJECTOR TYPE,
TUNGSTEN-HALOGEN,
WIPER-ACTIVATED
HYDROFORMED STEEL ROOF BEAMS

STAINLESS STEEL EXHAUST SYSTEM
TWILIGHT SENTINEL

(SLS OPTIONAL)

BOSE 4.0 MUSIC SYSTEM
8-SPEAKER, 425-WATT SYSTEM WITH
AM STEREO/FM STEREO, SIGNAL
SEEK/SCAN, DIGITAL DISPLAY,
CASSETTE, SINGLE-SLOT CD PLAYER,
WEATHERBAND, DIGITAL SIGNAL
PROCESSING, RADIO DATA SYSTEM,
AUTOMATIC VOLUME AND
THEFTLOCK
BOSE 4.0 MUSIC SYSTEM WITH
MINIDISC PLAYER
EIGHT-SPEAKER SYSTEM WITH
AM STEREO/FM STEREO,
CASSETTE, MINIDISC PLAYER AND
THEFTLOCK
ELECTRONIC COMPASS
FRONT-SEAT POWER LUMBAR CONTROLS
HANDS-FREE CELLULAR PHONE
HEATED FRONT & REAR SEATING AREAS
ONSTAR SYSTEM (WITH CELL PHONE,
DEALER INSTALLED)
RAINSENSE WIPER SYSTEM
SIX-DISC FRONT CONSOLE-MOUNTED
CD CHANGER
STEERING WHEEL, POWER TILT/
TELESCOPE
SUNROOF, EXPRESS OPEN
THREE-CHANNEL GARAGE DOOR
OPENER
TRUNK STORAGE SYSTEM
WOOD TRIM PACKAGE/STEERING
WHEEL AND SHIFT KNOB

(STS STANDARD)

ALL SLS STANDARD FEATURES PLUS:
AUTO-DIMMING DRIVER'S SIDE MIRROR
BOSE 4.0 MUSIC SYSTEM
8-SPEAKER, 425-WATT SYSTEM WITH
AM STEREO/FM STEREO, SIGNAL
SEEK/SCAN, DIGITAL DISPLAY,
CASSETTE, SINGLE-SLOT CD PLAYER,
WEATHERBAND, DIGITAL SIGNAL
PROCESSING, RADIO DATA SYSTEM,

AUTOMATIC VOLUME
CONTROL AND THEFTLOCK
FOG LAMPS
NUANCE PERFORATED LEATHER
SEATING AREAS
PERFORMANCE ALGORITHM SHIFTING
RAINSENSE WIPERS

(STS OPTIONAL)

ADAPTIVE SEATING, FRONT
BOSE 4.0 MUSIC SYSTEM
WITH MINIDISC PLAYER
ELECTRONIC COMPASS
HANDS-FREE CELLULAR PHONE
ONSTAR SYSTEM (WITH CELL PHONE)
SIX-DISC FRONT CONSOLE-MOUNTED
CD CHANGER
SUNROOF, EXPRESS OPEN
THREE-CHANNEL GARAGE DOOR
OPENER
TRUNK STORAGE SYSTEM
WOOD TRIM PACKAGE/STEERING
WHEEL AND SHIFT KNOB

*WITH OPTIONAL Z-RATED TIRES.

**VEHICLES WITH DEX-COOL
COOLANT MUST BE REFILLED ONLY WITH
DEX-COOL. MAINTENANCE NEEDS
VARY WITH DIFFERENT USES AND DRIVING
CONDITIONS. SEE YOUR OWNER'S
MANUAL FOR MORE INFORMATION.

***A SPECIAL NOTE TO
PARENTS: CHILDREN ARE
GENERALLY SAFER IF THEY RIDE IN A
REAR SEAT USING APPROPRIATE CHILD
SAFETY SEATS AND RESTRAINTS, WHICH IS
WHY GENERAL MOTORS RECOMMENDS
THAT CHILD SAFETY SEATS BE
PROPERLY SECURED IN A VEHICLE'S REAR
SEAT. SEE YOUR OWNER'S MANUAL
AND CHILD SAFETY SEAT'S INSTRUCTIONS
FOR MORE INFORMATION.

NOTE: PHOTOGRAPHS IN THIS
BROCHURE MAY FEATURE VEHICLES WITH
OPTIONAL EQUIPMENT.