

1994  DODGE

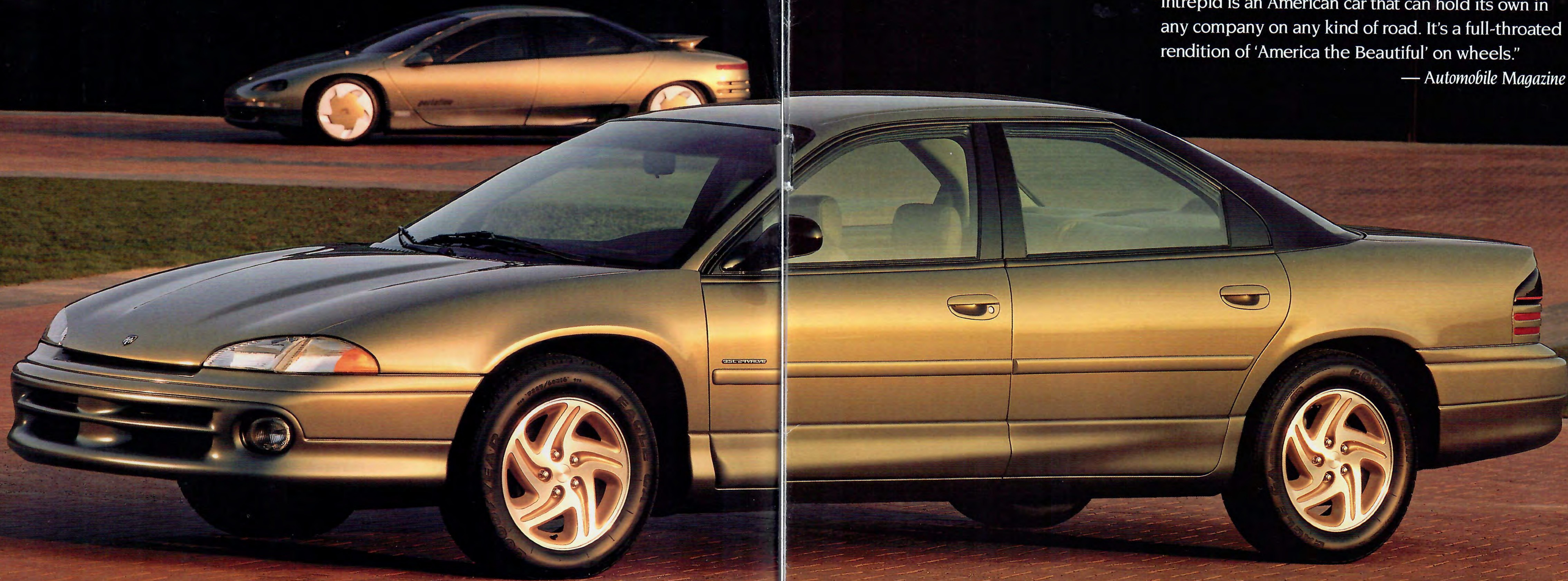
I N T R E P I D

SHAFFER'S SALEM AUTORAMA, INC.
339 SOUTH BROADWAY



SALEM, OHIO 44460
216/332-1546





"Intrepid is an American car that can hold its own in any company on any kind of road. It's a full-throated rendition of 'America the Beautiful' on wheels."

— *Automobile Magazine*

The Chrysler Technology Center Design Courtyard pictured here enables designers to carefully examine their work in full scale under natural light. Shown in the background is the Chrysler Portofino concept car, the early inspiration for Intrepid's cab-forward design. Intrepid ES shown here in Char-Gold Satin Glow.

The task was to create a totally new kind of driver's automobile. The success of this effort rested largely upon the ability of an automobile manufacturer to change. To innovate. To push forward into uncharted realms and create new standards of design, engineering, quality and environmental concern.

Along the way, old attitudes were shattered, old methods discarded. New alliances were forged, including interdisciplinary platform teams comprised of designers, engineers, manufacturing representatives and outside suppliers. Scores of "Product Excellence" objectives were set.

Among the most tangible catalysts

for change was the creation of a new \$1 billion advanced automotive facility — the Chrysler Technology Center. Here, all of the disciplines of vehicle development function harmoniously under one roof. Communication of ideas and answers is as simple as a quick trip down the hall. And an on-site pilot plant allows designers and engineers to observe the actual assembly process and make adjustments well before the first production vehicle rolls off the line.

Early on, Intrepid captured award after award. "Automobile of the Year" said *Automobile Magazine*. A "Best Buy" judged *Motor Trend*. "Ten Best List" decided *Car and Driver*.

Yet in the end, it is still the buyer who verifies the "rightness" of a carmaker's actions. Thus, Intrepid's outstanding first-year sales figures are further testimony to the "rightness" of the revolutionary path along which this exciting world-class car continues to evolve.

Intrepid's Early Development

The initial design sketches for Intrepid's cab-forward concept were created as far back as 1985. From those sketches came the cab-forward, four-door Portofino concept car, which first appeared at the 1988 Frankfurt Auto Show in Germany. The sleek Portofino began a series of cab-forward concept cars from the fertile

minds (and pens) of Chrysler's California and Michigan design centers... all evolving the cab-forward concept to near-production reality.

In February, 1989, the commitment was made to produce a world-class sedan with a cab-forward signature. The 800-plus member cross-functional platform team which had been formed to create the new car eagerly accepted the challenge — even though they had only three and a half years to bring the all-new Intrepid to production on schedule.

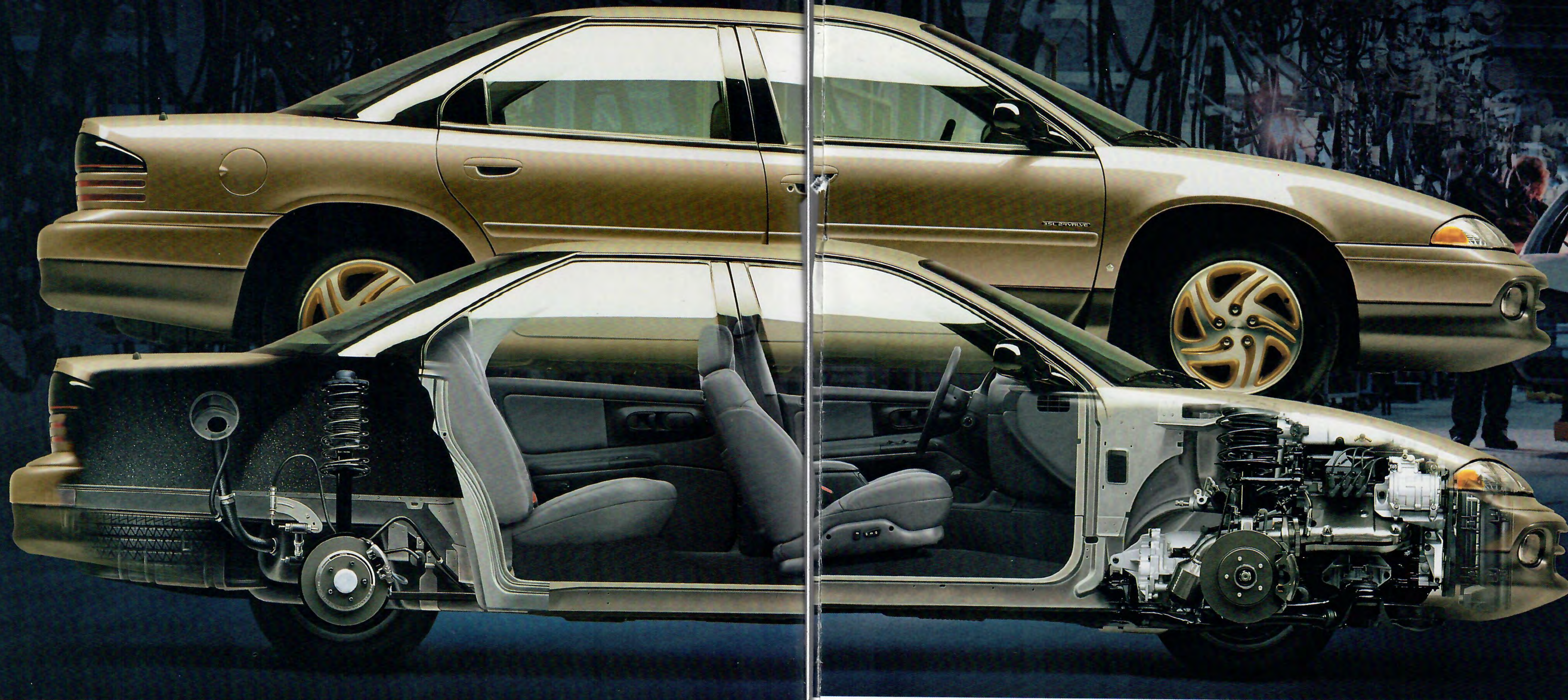
Among the "tools" the Intrepid team used was an advanced computer system which allowed the luxury of simultaneous engineering whereby

computer-aided design (CAD) and computer-aided manufacturing (CAM) programs work together to save time and improve overall quality.

This efficient way of operating, combined with the responsibility the team was given over the entire project, shaved months off the \$1.6-billion program while bringing exceptional quality and innovation to a whole new class of automobiles.

Some of the equipment shown or described throughout this catalog is available at extra cost.

About this catalog. Since the time of printing, some of the information you'll find in this catalog may have been updated. Ask your dealer for details.



Cab-Forward Design

In their quest for a dramatic new aerodynamic shape, Chrysler Corporation's advanced design studio discovered something else. It's called "cab forward." By moving the leading edge of the windshield forward and all four wheels toward the "corners" of the vehicle, a chain reaction of good things occurs.

Lengthening the distance between the wheels increases the wheelbase which, in turn, improves ride characteristics. It also allows wider doors for easier entry and exit as well as more rear seat leg room.

Moving the wheels further apart makes the vehicle wider, thus increasing

hip and shoulder room. A wider track also results in more stable handling. These benefits together with the others listed here make the Dodge Intrepid unlike any other automobile you have ever driven.

- The luggage compartment features a 16.7-cubic-foot capacity, a low-liftover design and a spare tire well capable of holding the conventional full-size spare tire which is available as an option.
- Rear impact protection includes an ultra-high-strength steel bumper and a Unibody "crumple zone" engineered to dissipate the energy generated by a collision.
- Available four-wheel disc anti-lock

brakes help prevent wheel lockup for safe, straight, confidence-building stops.

- Wide rear seat can accommodate three adult passengers in full comfort or two adults when the available Integrated Child Safety Seat* is in use.
- Large rear doors open wide for easy entry and exit.
- A long 113-inch wheelbase enhances ride characteristics while providing exceptional rear leg room.
- An ergonomically refined cockpit design features easy-to-reach-and-use controls, full analog instrumentation, precisely adjustable seats and a standard tilt steering column.

- Driver and front passenger air bags† help prevent serious injury in the unlikely event of a frontal collision.
- Front impact protection includes an ultra-high-strength steel bumper and a "crumple zone" engineered into the Unibody to help dissipate the energy generated by a collision.
- A standard four-speed automatic transaxle features electronic controls for smooth, precise shifts.
- Intrepid ES's available computerized traction control gives Intrepid's front-wheel drive an even better grip on slick or slippery surfaces during low-speed acceleration.

* Available in Medium Quartz cloth only.
† Always wear your seat belts.

A four-wheel, fully independent suspension optimizes both ride and handling characteristics.



An available 214 horsepower, 3.5-liter V6 engine features an overhead cam design, 24 valves, sequential multipoint fuel injection and an active tuned intake manifold for smooth, responsive performance.



Clearly A Driver's Car

Intrepid's driver is treated to the firm and supportive shape of a standard individual sport seat whose contours and firmness levels are based on anthropometric (body measurement) data and exhaustive competitive analysis.

Further ergonomic fine-tuning is available in the form of optional eight-way power driver and front passenger seats (standard with leather seating).

Intrepid's controls were carefully studied for positioning as well as shape, feel and visual recognition. The large, highly readable, black-on-white full analog instrumentation is clearly visible through the steering wheel and can be supplemented by an available message center (standard on Intrepid ES).

Since Intrepid's engineers also place a premium on interior quietness, a number of sound deadening improvements, including increased damping of rear wheel housings, have been made.



Intrepid's new optional power moonroof blocks out all ultraviolet light and up to 81 percent of visible light to prevent interior heat absorption. A front air deflector helps reduce wind noise at all driving speeds.

Intrepid ES's optional leather-with-vinyl-trim interior shown in Medium Quartz at the right.



"The seats are comfortable, controls are easy to find and the tactile feel is superb."

— Motor Trend

A Total Safety Package

Try as a driver might, it is not always possible to avoid an accident. So, in addition to providing features that can help a driver skillfully outmaneuver a collision, Intrepid's engineers also have provided features which can eliminate or reduce the possibility of injuries sustained upon impact.

In a quest for maximum occupant protection, Intrepid is outfitted with standard driver and front passenger air bags.* Ingenious installation of the passenger-side air bag allows a fully usable glove box... an item often missing in other vehicles equipped with dual air bags.

Equally ingenious is the award-winning optional Integrated Child Safety Seat†. It folds down and out of the middle of the rear seat and offers a five-point seat belt system for use with children weighing from 20 to 66 pounds. Extra security for older children is provided by standard child-protection rear door locks and Intrepid's new optional speed-sensitive automatic

power door locks. Once activated by your Dodge dealer, Intrepid's new power door locks automatically lock when the vehicle reaches 15 mph. Intrepid's optional power windows offer the safety of a driver-activated lockout feature and the convenience of a new one-touch-down feature.

All standard three-point seat belts for outboard seating positions feature locking retractors designed to eliminate slack and hold occupants more securely in their seats during an accident.

For greater ease and comfort, Intrepid features height adjustable front seat belts which position the shoulder strap comfortably across your chest.

The front seats themselves were designed to better support and hold their occupants during a collision and to position them at an angle which maximizes the effectiveness of the safety "knee blocker" design of Intrepid's instrument panel.

As impressive as all these safety features are, they can only prevent serious injury if the vehicle itself

absorbs and properly channels the force of an impact away from the passenger compartment. To ensure the optimal efficiency of such a design, the Intrepid design team employed the latest computer modeling technology to create a stronger, more solid Unibody and to simulate vehicle crashes long before actual vehicle crash testing began.

The result is that, in addition to the bumpers and side door beams (both constructed from ultra-high-strength steel), Intrepid offers front and rear "crumple zones" which systematically accordion upon impact to absorb the energy of a collision and minimize its effects upon the vehicle's occupants.

* Always wear your seat belts.

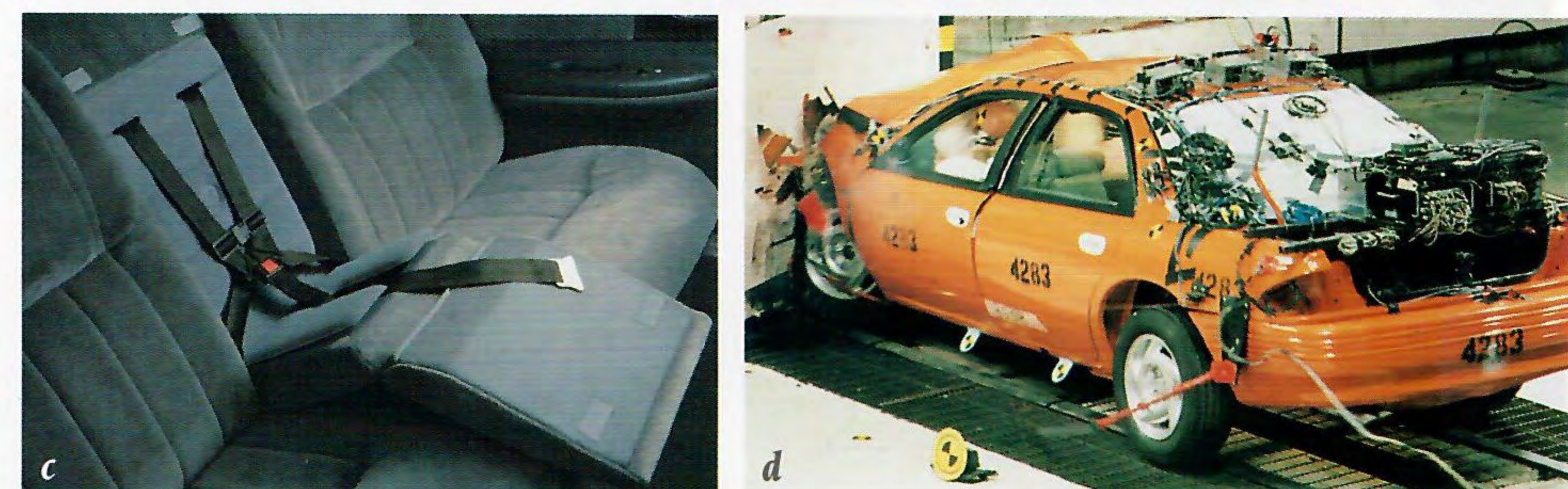
† Available in Medium Quartz cloth only.

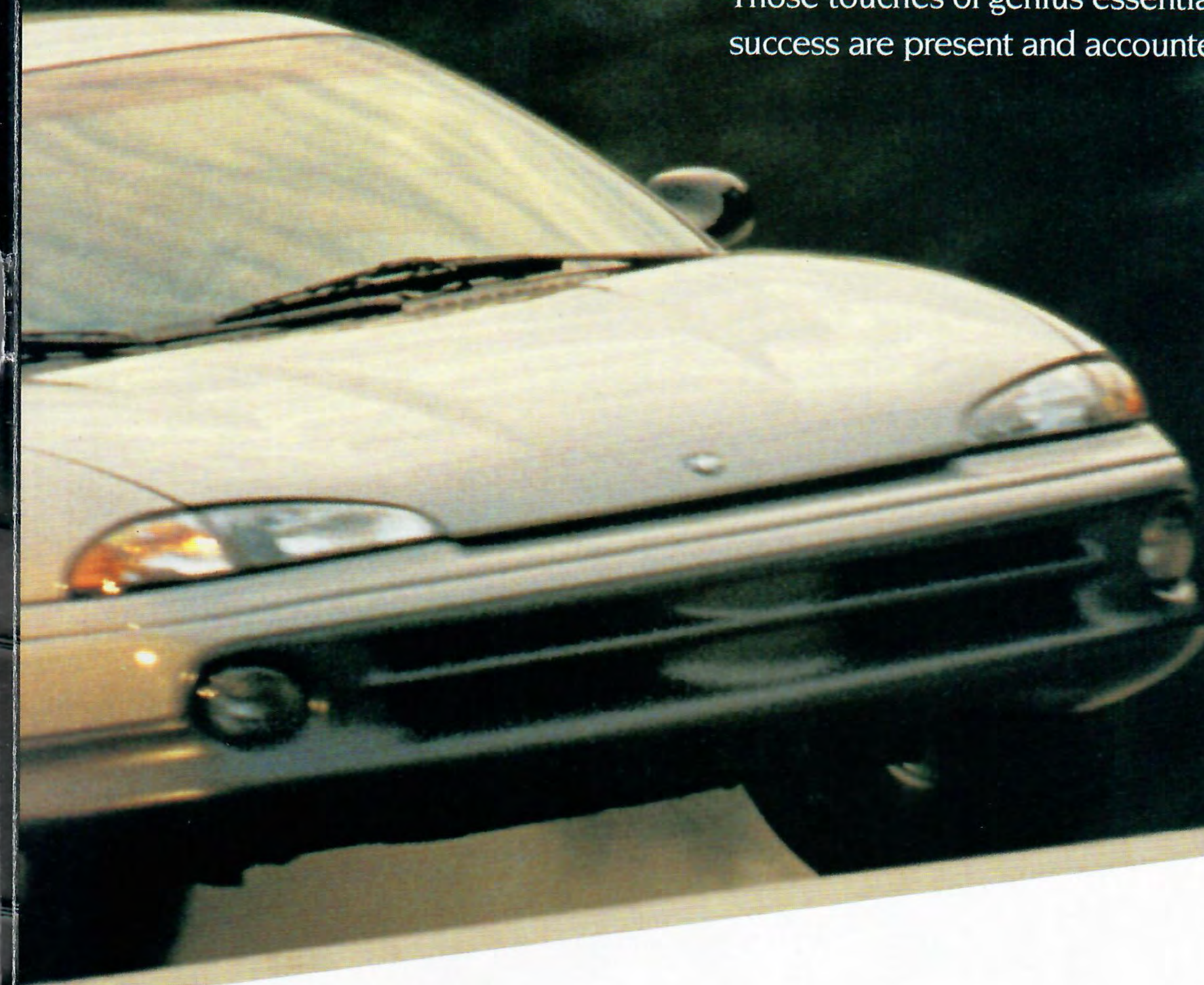
a) Intrepid offers the added security of an optional portable cellular phone which features a convenient docking station for use inside the vehicle. Slightly larger than a dollar bill, the portable phone can be easily slipped into a pocket or a briefcase. Other dealer-installed Intrepid cellular phone options include the Visorphone® and the mobile phone.

b) Ultra-high-strength steel front and rear side door beams, which comply with the 1997 federal dynamic side-impact requirements, are shaped to assist in repelling the impact generated by a collision.

c) An optional Integrated Child Safety Seat† provides added safety, convenience and seating flexibility for the family with small children.

d) Vehicle crash testing clearly demonstrated the viability of both Intrepid's structural design and its supplemental restraint systems.





"Those touches of genius essential for long-term success are present and accounted for."

— Motor Trend

Tested To Withstand Time And Nature

To survive in the real world of everyday driving, vehicles must contend with the ravages that miles of driving and years of extreme weather bring. To understand how well the Dodge Intrepid would hold up under conditions ranging from typical to terrible, a rigorous test program was conceived to simulate these conditions during an accelerated time frame.

For instance, extensive salt spray tests simulated long-term exposure to corrosion-inducing factors. Intrepid prototypes were run through a "corrosion cycle" at a special corrosion facility located in the Chelsea, Michigan, proving grounds.

In this cycle, the vehicle is continually soaked in a salt water spray booth. It is removed from the booth periodically, driven behind a special gravel spray truck and then returned to the salt spray chamber. This routine forms one cycle.

By punishing a vehicle in this manner, running two cycles per week, the testing can duplicate a vehicle's 10-year corrosion cycle in just 18 months.

Other tests took Intrepid into the mountains, the scorching desert and the frigid north to ensure its ability to withstand the rigors of high-altitude, summer and winter driving at their very worst.

Customer "ride-and-drive" clinics enabled Chrysler engineers to fine-tune Intrepid's quiet interior by

determining which sound isolation characteristics are most important to owners.

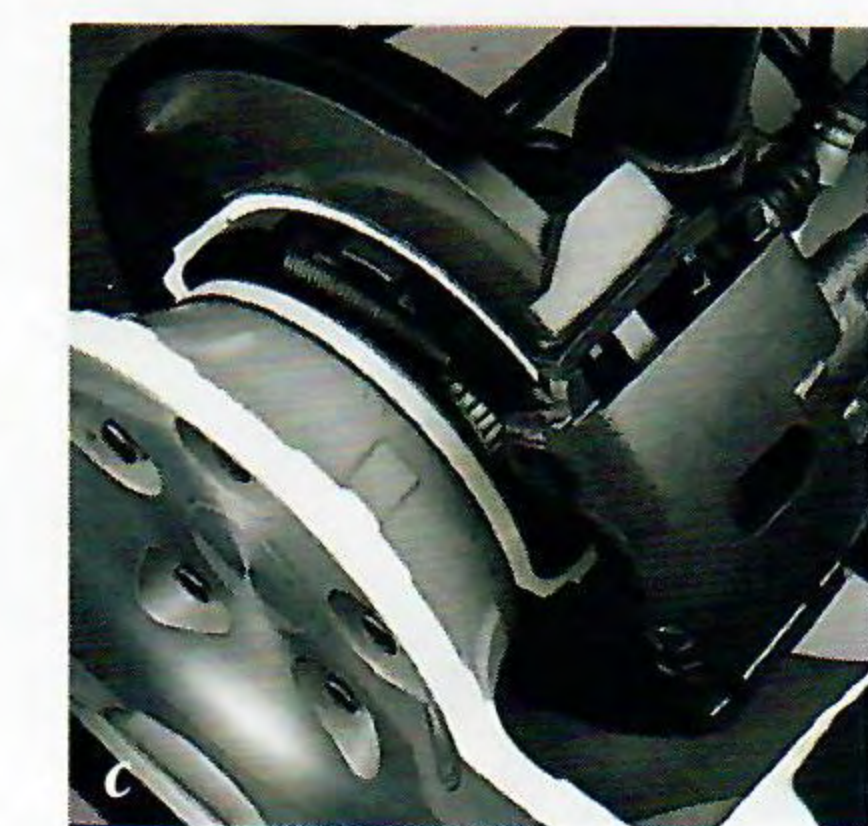
A total of more than three million miles were driven during the Intrepid development program to ensure that the platform team's objectives for durability, endurance and environmental considerations were met.

Additionally, a quality verification fleet was created. Comprised of some 1,250 early production cars put into daily rental fleets, this program helped engineers accumulate millions of miles of early customer feedback on the new cars.

What these tests did was allow engineers to modify or fine-tune components to deal with the extremes encountered, so that production vehicles could pass their own real-world "tests" with flying colors.



- a) Intrepid's four-wheel, fully independent suspension was extensively track-tested to ensure that it would withstand the rigors of real-world driving.
- b) Intrepid's four-wheel independent suspension produces a smooth ride as well as superb handling.
- c) Intrepid's optional anti-lock brake system prevents brake lockup and allows the driver to steer even during hard braking.
- d) Intrepid's disc brakes, which feature environmentally friendly asbestos-free linings, were water-tested to ensure their effectiveness in foul weather driving conditions.





"More than just dramatic styling... it's
bristling with innovation."

— Road & Track

A Quality Manufacturing Process

While cab forward represents a fresh new approach to automotive design, the Bramalea assembly facility demonstrates a whole new quality methodology for building automobiles. It is also powerful proof that people are still the heart and soul of product quality.

As part of the cross-functional platform team, 15 Bramalea employees worked full time on the development of the Intrepid. Quality improvements resulting from easier

assembly were directly attributable to design refinements recommended by these production workers during the simultaneous engineering development phase.

Over 70 Intrepid prototypes were built at a special pilot plant in Detroit in order to verify processes and tooling. By the summer of 1991, as many as 80 Bramalea employees were involved in the assembly of these prototypes.

Among the new assembly procedures introduced for the Intrepid

was modular construction. Each Intrepid includes over 70 preassembled modules built by Chrysler Divisions as well as a small group of select suppliers who also worked with the Intrepid team from the very beginning to ensure the highest-quality components possible.

Another innovation is the assembly of vehicles with their doors off to improve worker ergonomics and prevent scratches and dents. Worker ergonomics are also facilitated by the use of pallets on which chassis subassemblies are built.

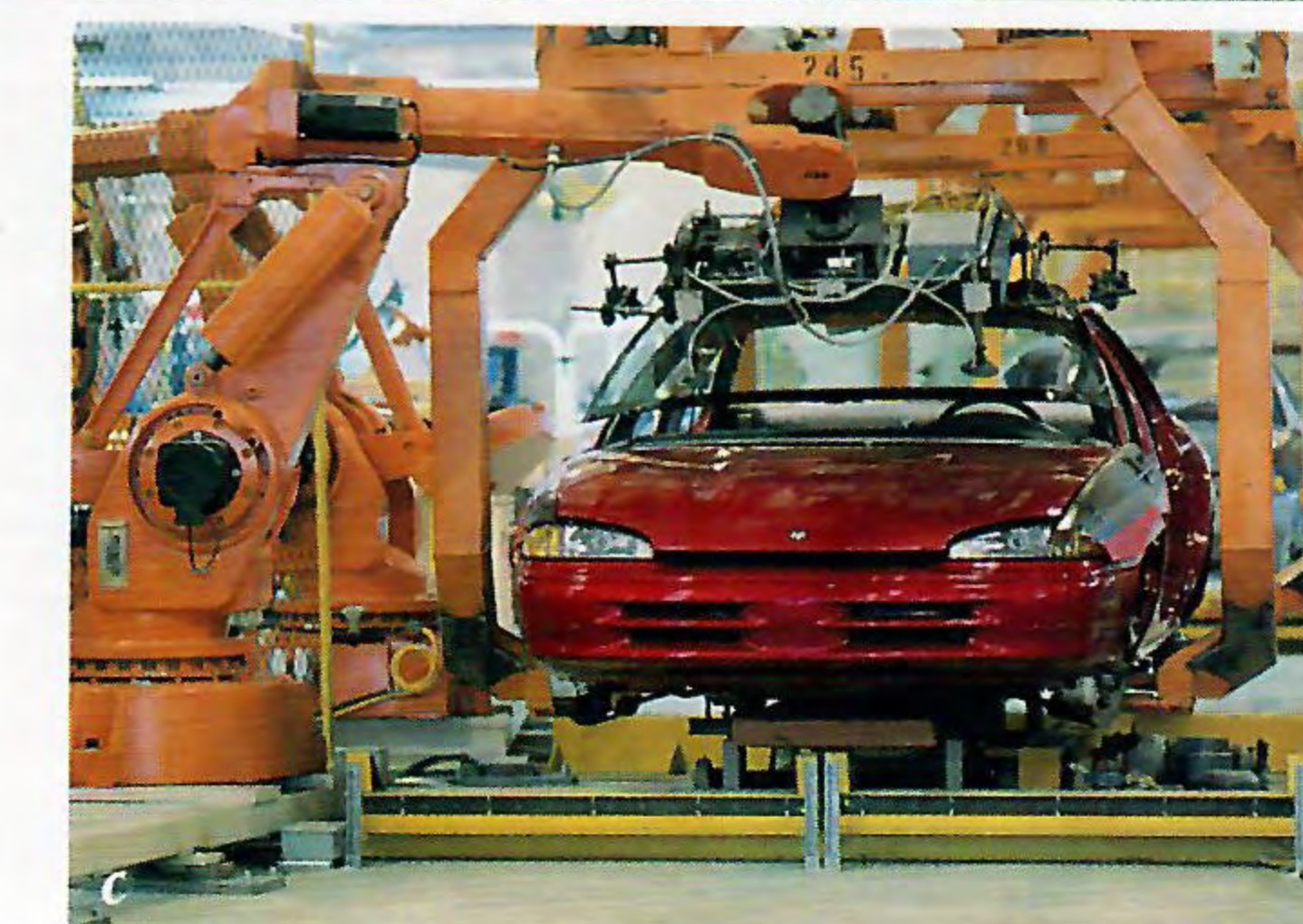
To maximize worker safety and vehicle quality, all welding and painting are done by sophisticated robotics, as is windshield and back window installation.

Intrepid's electrical components are tested right on the assembly line, using six-stage sequential testing procedures developed by a team of Bramalea employees and Chrysler engineers.



a) The power train and brake performance of every Intrepid is verified on a special computerized roller system before the vehicle leaves the Bramalea assembly facility.

b) Intrepid's lustrous finish is the result of a 21-step process which features extensive body sealing and comprehensive inspections.



c) Automated installation ensures a precise fit and sealing for windshields and backlites.



DODGE INTREPID

INTREPID FEATURES & SPECIFICATIONS

Power Train Features	Intrepid	Intrepid ES
3.3-liter V6 engine ¹	S	S
3.5-liter, 24-valve, single overhead cam V6 engine	O	O
Sequential multipoint fuel injection	S	S
Distributorless ignition system	S	S
4-speed automatic transaxle, computer controlled with lockup torque converter	S	S
Chassis Features		
Unibody construction	S	S
4-wheel independent Touring Suspension	S	S
4-wheel independent Performance Suspension	NA	O
Power-assisted front disc/rear drum brake system	S	NA
Power-assisted 4-wheel disc brake system	P	S
P205/70R15 all-season steel-belted radial tires mounted on 15-inch steel wheels with wheel covers	S	NA
P225/60R16 all-season touring steel-belted radial tires mounted on 16-inch aluminum wheels	NA	S
P225/60R16 all-season performance steel-belted radial tires mounted on 16-inch aluminum wheels	NA	O
T115/80D15 compact spare tire	S	S
Power-assisted rack-and-pinion steering (17.0:1 steering ratio)	S	S
Speed-sensitive variable-assist power steering	O	S
Composite 18-gallon fuel tank	S	S
Exterior Features		
Antichip protective coating on lower body panels and hood	S	S
Dent-resistant composite front fenders	S	S
Composite halogen headlights	S	S
Integrated, fascia-mounted fog lights	NA	S
Neutral density, full-width taillights	S	S
Body-color bodyside molding	S	S
Ground effects bodyside cladding	NA	S
Intermittent speed-sensitive windshield wipers	S	S
Moonroof	O	O
Tinted glass (all windows) with Solar Control glass windshield and rear window	S	S
Clear Coat paint	S	S
Safety Features		
Driver and front passenger air bags ²	S	S
Integrated Child Safety Seat (rear) ³	O	O
Three-point active seat belts at all outboard seating positions	S	S
Front and rear "crumple zones"	S	S
High-strength steel side-impact door beams	S	S
Front disc, rear drum brakes	S	NA
4-wheel disc brakes	P	S
4-wheel disc brakes with anti-lock system (ABS)	O	O
Electronic low-speed traction control	NA	O
Electric rear window defroster	S	S
Child-protection rear door locks	S	S
Center high-mounted supplemental stoplight	S	S
Over-size dual manual remote control outside mirrors	S	S
Security Features		
Remote/Illuminated Entry System	O	O
Antitheft Security System	NA	O
Locking gas cap (Mopar)	O	O
Wheel locks (Mopar)	O	O
Cellular Phone Availability⁴		
Visorphone ⁵	O	O
Mobile phone	O	O
Portable phone ⁶	O	O

Interior Features	Intrepid	Intrepid ES
Electronic speed control	O	S
Air conditioning ⁷		
—Manual	S	S
—Automatic temperature control	NA	O
Cloth-upholstered front bucket seats with infinitely adjustable reclining seatbacks and two-way adjustable head restraints	S	NA
Premium cloth-upholstered front bucket seats with driver-side manually adjustable lumbar support, infinitely adjustable reclining seatbacks, two-way adjustable head restraints and seatback map pockets	NA	S
50/50 split front bench seat	O	NA
Contoured, three-passenger rear seat with folding center armrest	NA	S
Full rear bench seat without armrest	S	NA
Floor console with dual cup holders in armrest, cassette or compact disc storage and rear heater/air conditioning outlets ⁷	S	S
Three-point seat belts at all outboard seating positions; front belts are height adjustable and feature traveling inboard buckles for added comfort	S	S
Tilt steering column	S	S
Electromechanical instrument cluster, including tachometer	S	S
Graphic display message center	P	S
AM/FM electronically tuned stereo radio with four speakers	S	NA
AM/FM electronically tuned stereo cassette player with six speakers	O	S
Reminder chimes for key in ignition, seat belts, headlights on and door ajar	S	S
Dual covered visor vanity mirrors	S	S
Driver and passenger visors with secondary "sun-blocker" design	O	O
Front door map pockets	S	S
Luggage compartment cargo net	O ⁸	S

S=Standard O=Optional NA=Not Available P=Included in Customer-PreferredSM Packages ¹Available with a flexible fuel option. (Not available in California) ²Always wear your seat belts. ³Not available in leather, Light Driftwood cloth, or Blue cloth. ⁴Dealer-installed accessory item. ⁵Available with Docking Station. ⁶There are special engine cooling requirements for field-installed air conditioning. Failure to follow these requirements may invalidate limited warranty. See your dealer for details. ⁷Requires bucket seats. ⁸Available from Mopar.

Customer-PreferredSM Package Group Codes

Power Train Availability							
Engines	Transaxle	Intrepid			Intrepid ES		
3.3-liter 12v V6	4-spd auto.	22B	22C	22D	22K	22L	22M
3.5-liter 24v V6	4-spd auto.			26D		26L	26M
Package Content							
Floor mats, front and rear		•	•	S	S	S	
Electronic speed control		•	•	S	S	S	
AM/FM stereo cassette		•	•	S	S	S	
Power door locks, speed-sensitive		•	•	•	•	•	
Power windows, one-touch down		•	•	•	•	•	
Power heated outside mirrors		•	•	•	•	•	
Power deck lid release		•	•	S	S	S	
8-way power driver's seat		•	•	•	•	•	
Message center		•	•	S	S	S	
Leather-wrapped steering wheel		•	•	•	•	•	
4-wheel disc brakes		•	•	S	S	S	
Remote/Illuminated Entry Package							•
Full overhead console ¹							•
Automatic temperature control A/C							•
Premium sound cassette system							•
Anti-lock 4-wheel disc brakes							•
Conventional spare tire							•
Illuminated visor vanity mirrors			•		•		
Vehicle theft alarm							•
Automatic day/night rearview mirror							•
Grab handles (3)			•		•		
8-way power front passenger seat							•



DODGE INTREPID ES

Available Options

	Intrepid			Intrepid ES		
	B	C	D	K	L	M
Vehicle theft alarm					O	P
Front and rear floor mats	O	P	P	S	S	S
Electronic speed control	O	P	P	S	S	S
Moonroof and mini overhead console			O		O	O
50/50 split bench seat	O	O	O			
Conventional spare tire	O	O	O	O	O	P
8-way power driver and front passenger seats					O	O
AM/FM stereo cassette	O	P	P	S	S	S
Power door locks, speed-sensitive ⁵	O	P	P		P	P
Power deck lid release		O	P	S	S	S
Integrated Child Safety Seat ¹	O	O	O	O	O	O
ABS/4-wheel disc brakes	O	O	O	O	O	P
Traction control ²					O	O
Remote/Illuminated Entry Package			O		P	P
Premium sound cassette system			O		O	P
Premium sound compact disc player system						
Automatic day/night mirror ⁴					O	P
Automatic temperature control A/C					O	P
Full overhead console ¹			O		O	P
Leather Interior Package					O	O
16" Wheel and Handling Package		O	O			
Performance Handling Group					O ⁴	O
Power locks ³ , windows, mirrors				O	P	P

O=Optional S=Standard P=Available in Customer-PreferredSM Packages ¹Included in Customer-PreferredSM Packages. ²Not available in leather. ³Requires overhead console. ⁴Not available with front bench seat or moonroof. Full console with front bench seats or moonroof require the mini-console. ⁵Requires 3.5-liter engine. ⁶Dealer activated speed-sensitive option.

Power Train Availability

Standard 3.3-Liter Engine Specifications		Optional 3.5-Liter Engine Specifications	
Engine type	Overhead valve, 60-degree V6	Engine type	Single overhead cam, 24-valve, 60-degree V6
Horsepower	161 @ 5,300 rpm	Horsepower	214 @ 5,800 rpm
Torque (lb-ft)	181 @ 3,200 rpm	Torque (lb-ft)	221 @ 2,800 rpm
Fuel system	Sequential multipoint electronic fuel injection	Fuel system	Sequential multipoint electronic fuel injection featuring dual throttle bodies
Bore and stroke	3.66" x 3.19"	Bore and stroke	3.78" x 3.19"
Compression ratio	8.9:1	Compression ratio	10.4:1
Exterior Dimensions			
Wheelbase	113.0"	Head room (front/rear)	38.4"/37.2"
Overall length	201.7"	Leg room (front/rear)	42.3"/38.7"
Overall width	74.4"	Hip room (front/rear)	56.2"/58.1"
Overall height	56.3"	Shoulder room (front/rear)	59.0"/58.9"
Track (front/rear)	62.0"/62.0"	EPA interior volume	104.5 cu ft
Specifications			
Curb weight ¹	3,275 lb (Intrepid) 3,340 lb (Intrepid ES)	Trunk volume	16.7 cu ft
Turning diameter	37.6 ft		
Maximum towing capacity	2,000 lb		
Coefficient of drag	.31 ²		

¹Base curb weights. ²Intrepid Intrepid ES is .33.

Exterior Paint Colors



*When ordered in these exterior colors, Intrepid ES models feature body-color fascias and bodyside cladding. Light Driftwood Satin Glow and Char Gold Satin Glow ES model fascias and cladding are Dark Fern Gray. All other ES exterior colors feature Dark Quartz fascias and cladding. Due to occasional printing irregularities, the colors shown may vary slightly from actual hues. See your Dodge Dealer for accurate color chips.

Color Combinations

Exterior Paint Color	Interior Color	Intrepid	Intrepid ES
Black Cherry Pearl Coat	Quartz, Driftwood	X	X
Metallic Red ¹	Quartz, Driftwood	X	X
Indy Red	Quartz, Driftwood	X	X
Light Driftwood Satin Glow ¹	Quartz, Driftwood	X	X
Char Gold Satin Glow ¹	Quartz, Driftwood	X	X
Teal Pearl Coat	Quartz, Driftwood	X	X
Nighthawk Blue Metallic ¹	Quartz, Driftwood or Blue ²	X	X
Emerald Green	Quartz, Driftwood	X	X
Black	Quartz, Driftwood	X	X
Bright White	Quartz, Driftwood or Blue ²	X	X

¹Available at extra cost. ²Blue interior is not available on Intrepid ES. Clear Coat finish is standard on every 1994 passenger car built by Chrysler Corporation.

Certain models, packages, and options are subject to specific restrictions, requirements or late availability. See your dealer for the latest ordering information.

All product illustrations are based on current information at the time of publication approval. Although descriptions are believed correct, accuracy cannot be guaranteed. Chrysler Corporation reserves the right to make changes from time to time, without notice or obligation, in prices, specifications, colors and materials, and to change or discontinue models. See your dealer for the latest information.



CustomerOne™

Futuristic design. Innovative engineering. Quality production. All are embodied in Dodge Intrepid. But to you, the car buyer, the vast resources of Chrysler Corporation are centered in just one place: the dealership.

To ensure that your experience there will be a satisfactory one, more than 100,000 dealership management, sales and service people are participating in the most extensive educational initiative in automotive history.

It's called Customer One and it establishes one unbreakable rule: Treat *every* customer you meet with honesty and respect. Customer courtesy and respect is not a goal — it is an imperative. Product knowledge is another essential, and it is imparted to dealership personnel through self-educating training materials which supplement formal product training and driving sessions. Service personnel, too, are trained, not just to provide the technical answer to a vehicle problem, but to respond personally to every owner.

That's the new Dodge culture: new ways to research, create, test and build world-class cars and trucks — and improved ways to provide world-class treatment of the people who buy them.

Owner's Choice Protection Plan*

The Owner's Choice Protection Plan is an industry exclusive that offers Dodge owners a choice of:

- A 12-month or 12,000-mile (12/12) Basic Limited Warranty with a seven-

year or 70,000-mile (7/70) Power Train Limited Warranty.

- Or a three-year or 36,000-mile Basic Bumper-to-Bumper Limited Warranty. Ask your dealer for a copy of these warranties and any restrictions which may apply.

7-Year/100,000-Mile Anticorrosion Limited Warranty

In addition, all Chrysler Corporation vehicles are covered by the seven-year/100,000-mile Outer Panel Anticorrosion Limited Warranty. Your dealer will repair or replace at no charge outer body sheet metal panels found to have developed perforation (rust-through) in normal use up to seven years or 100,000 miles. No deductible applies.

*See copy of limited warranty at dealer. Restrictions apply.

Chrysler Service Contracts

Additional peace-of-mind protection for Intrepid owners is available through optional Chrysler Service Contracts. These services are available in a variety of time and mileage combinations to meet your particular driving needs.

Leasing

Of course, you may prefer to lease your new Dodge Intrepid instead of purchasing it. For many new car prospects, leasing is a wise alternative to buying. Leasing a new Intrepid will usually involve a small security deposit and the first month's lease payment. Monthly payments are usually less than financing a new car purchase.

Chrysler Credit Financing

Chrysler Credit offers a variety of finance programs that can help make your new Dodge Intrepid even more affordable. These flexible finance

programs can be tailored to suit your budget and your lifestyle. They include Gold Key Plus, College Graduate Plans, Gold Key Lease, Retail Financing and other special payment plans. Ask your salesperson for details.

Physically Challenged Assistance Program

Cash reimbursements are available for qualified adaptive driving devices on the 1994 Dodge Intrepid. Ask your dealer to provide you with more information or call the Physically Challenged Resource Center at 1-800-255-9877.

Mopar Customer Care

There's only one way to keep your Dodge Intrepid performing at its optimum mile after mile. Just make sure it's serviced regularly at your nearby Dodge dealer. That's where you'll find first-rate mechanics specially trained and equipped to maintain and repair your new Intrepid.

Mopar Parts

Mopar parts are engineered by Chrysler Corporation for use in your new Dodge Intrepid. When replacement is necessary, be sure to specify Mopar parts.

Chrysler Cellular Systems

For 1994, Chrysler will be offering a selection of dealer-installed/-supplied cellular phones in several models to enhance the available optional equipment list. Ask your dealer for details. OKI® and Panasonic warrant and service these products. Restrictions apply. Ask your dealer for details and a copy of these limited warranties.

INTREPID



THE NEW DODGE

The New Dodge For Car Enthusiasts



DEZO'S GARAGE