

# 2004 KIA MODEL LINE



Make every mile count.



# ADD KIA TO YOUR LIFE

BECAUSE YOU SHOULDN'T HAVE TO PAY MORE FOR A WELL-EQUIPPED VEHICLE. WITH A GREAT WARRANTY. BECAUSE YOU WANT A STYLISH VEHICLE THAT DOESN'T LOOK LIKE EVERYTHING ELSE ON THE ROAD. AND ABOVE ALL, BECAUSE YOU'VE GOT A LOT OF LIVING TO DO.



It helps you explore your world. Discover new places with friends and family. Experience the freedom of the open road. And even inspire some of you to belt out 70's tunes at the top of your lungs. There's no denying it — your car is an essential part of your life. Why not choose one that helps you make the most of it? At Kia, we've spent more than 50 years designing vehicles with this in mind. By providing more



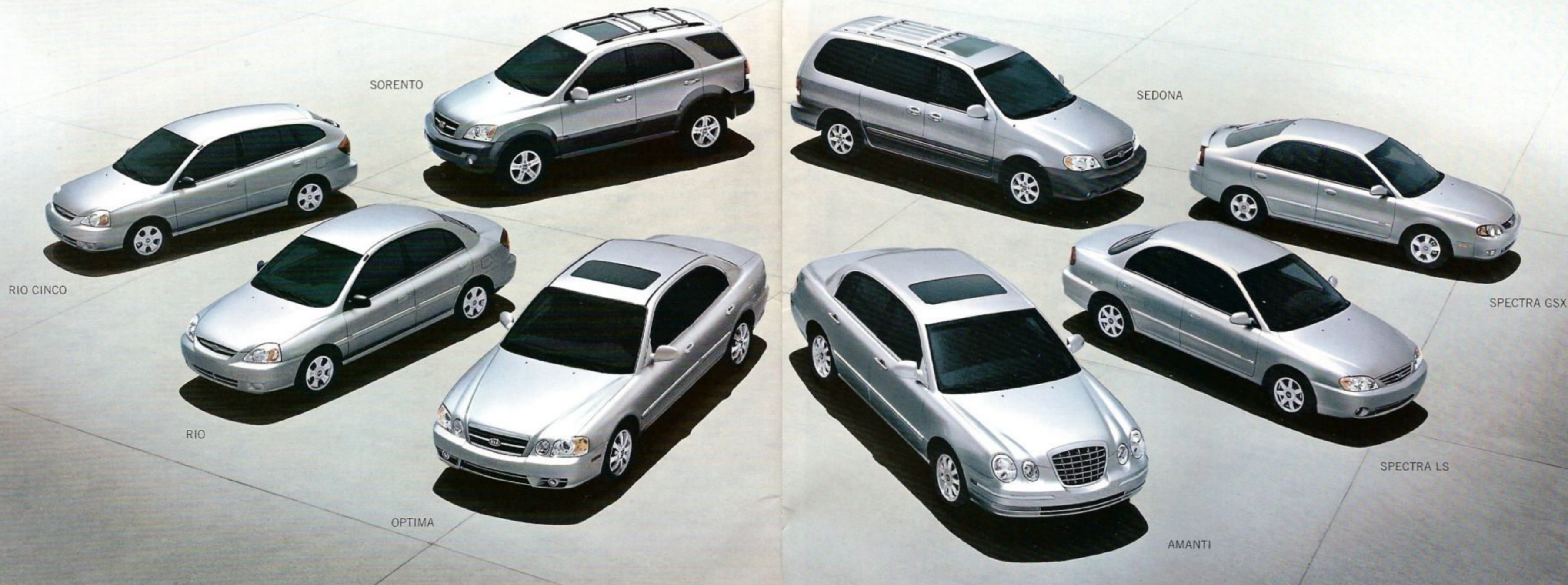
features, more benefits, more fun and more peace of mind for a lot less money than you'd expect. With an unsurpassed warranty program and a full range of reasonably priced vehicles to suit every need and desire. Which means you can afford to do more of what you want in life. Because every moment counts. And so does every mile.

LOOKING FOR THAT SPECIAL KIA BUT NOT READY TO CHANGE OUT OF YOUR PAJAMAS? VISIT [WWW.KIA.COM](http://WWW.KIA.COM). OUR SITE LETS YOU DO ALL SORTS OF FUN THINGS, LIKE CUSTOM CONFIGURE YOUR CHOICE OF KIA WITH YOUR CHOICE OF OPTIONS. YOU'LL ALSO FIND ALL THE INFO YOU NEED, INCLUDING THE LOCATION OF THE KIA DEALER NEAREST YOU. YOU CAN EVEN GET PRICE QUOTES, CALCULATE YOUR POTENTIAL MONTHLY PAYMENT AND CHECK OUT A 360° INTERIOR AND EXTERIOR VIEW OF OUR VEHICLES. WOW, AND YOU HAVEN'T EVEN LEFT THE HOUSE YET!



# MEET THE FAMILY

IT TAKES ALL TYPES TO MAKE UP A FAMILY. RUGGED, SOPHISTICATED, SPORTY, FUN-LOVING. OR A LITTLE OF EVERYTHING. LUCKILY, OUR FAMILY IS NO DIFFERENT. BUT NO MATTER WHICH KIA MODEL YOU CHOOSE, YOU'LL FIND THEY ALL HAVE SOMETHING IN COMMON — GREAT QUALITY, STYLE, AFFORDABILITY AND A 10 YEAR/100,000 MILE WARRANTY PROGRAM.\*



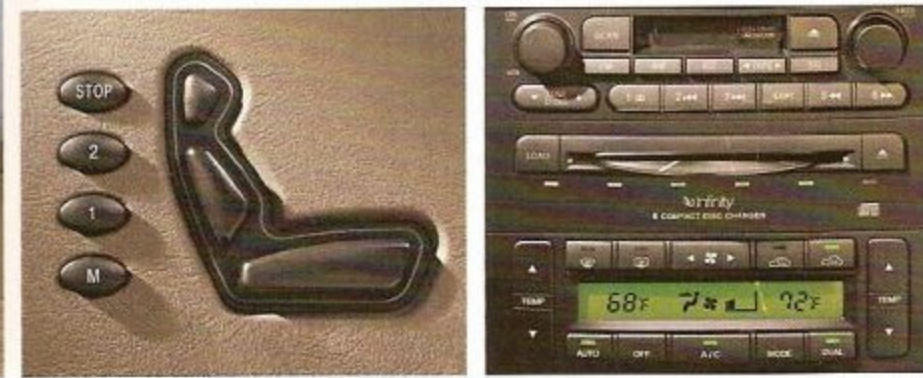
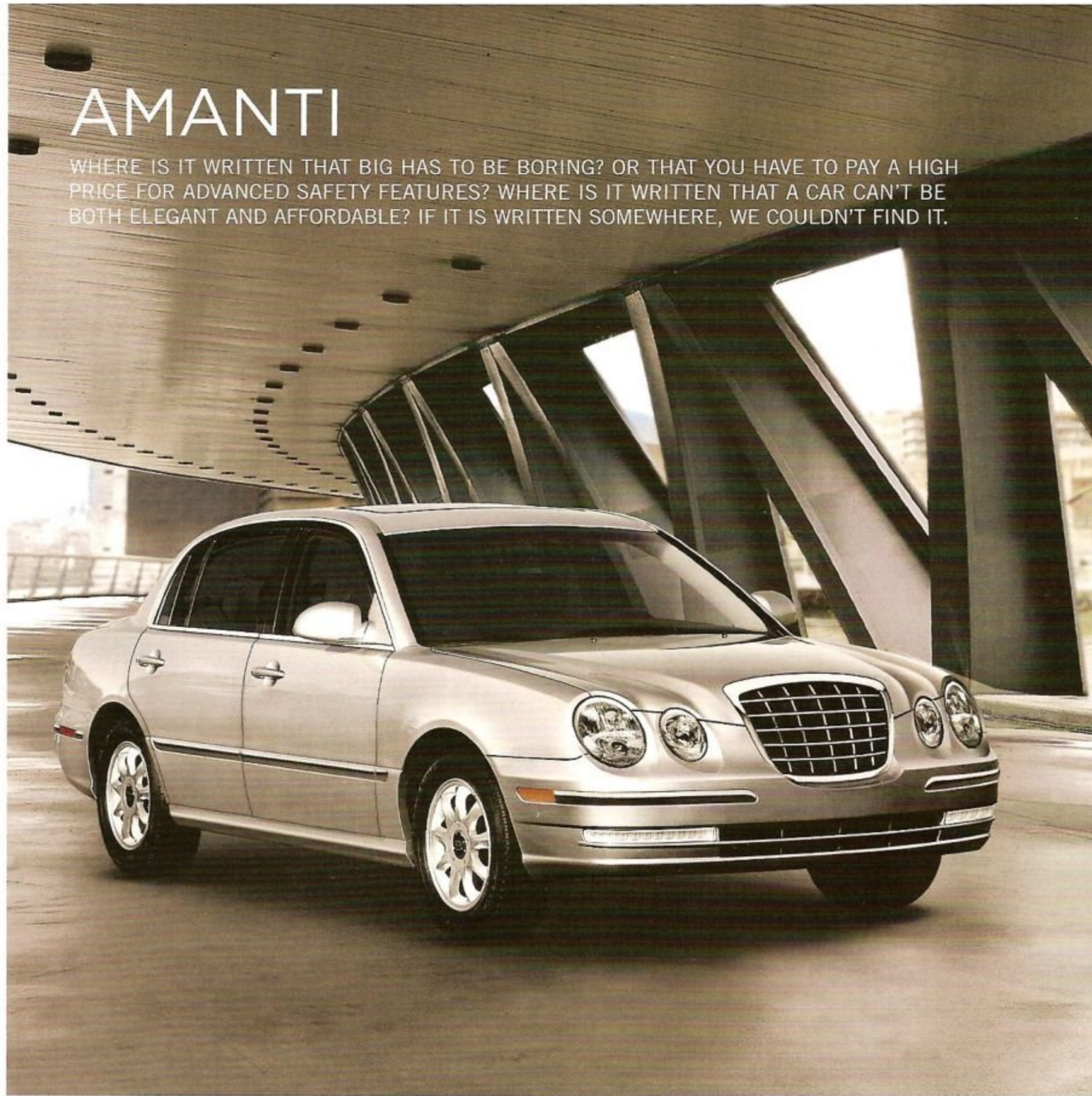
We've told you about the philosophy behind our family of vehicles. But at Kia, it's our cars that are the real story — eight automobiles with more than half a century of engineering expertise behind them, from award-winning SUVs and minivans to stylish sedans and sporty compacts. In the last three years alone, we've added six new vehicles to our line-up. All of which are designed to provide you with the quality and features you want at an impressive value, plus our world-class

warranty program, which includes 10 years/100,000 miles limited powertrain, 5 years/60,000 miles limited basic, 5 years/100,000 miles limited anti-perforation and 5 years/unlimited miles 24-hour roadside assistance. Maybe that's why we've sold over 2 million Kias worldwide, 1 million of which you'll find in the U.S. In fact, we have more than 650 retailers in 50 states. And when you visit one, we're willing to bet there's a Kia there with your name on it.

\*See back of brochure for further details.

# AMANTI

WHERE IS IT WRITTEN THAT BIG HAS TO BE BORING? OR THAT YOU HAVE TO PAY A HIGH PRICE FOR ADVANCED SAFETY FEATURES? WHERE IS IT WRITTEN THAT A CAR CAN'T BE BOTH ELEGANT AND AFFORDABLE? IF IT IS WRITTEN SOMEWHERE, WE COULDN'T FIND IT.



Introducing the all-new Kia Amanti. With contemporary styling and a personality to call its own, it's the big sedan you'll be proud to be seen in. The Amanti has more headroom than any car in its class. More luxurious standard features, like dual-zone automatic climate control, power front seats and power windows, door locks and mirrors. Plus available features like leather seats and an Infinity sound system with 6-disc in-dash CD changer. The Amanti also gives you a superior standard safety system, including driver and front-passenger airbags, front and rear seat-mounted side

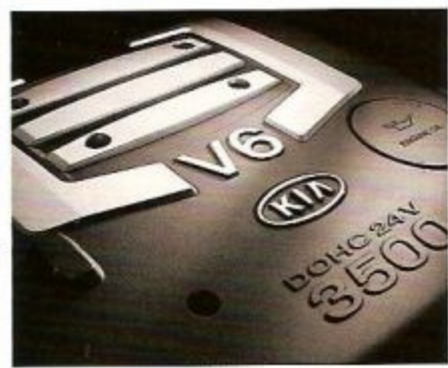
airbags and full-length side-curtain airbags. Plus front active headrests, ABS and 4-wheel disc brakes. You'll also get a responsive 3.5-liter V6 engine with a 5-speed Sportmatic™ transmission. Best of all, the Amanti gives you something even more appealing. The spaciousness, luxury and comfort you've always wanted — with the style and attitude you've been holding out for.

COBALT BLUE	PEARL WHITE
CARBON GRAY (M)	CREAM GOLD
EBONY BLACK	
DARK ROSE RED	
DIAMOND SILVER (M)	

(M) INDICATES METALLIC PAINT

“★★★★★ WE ALWAYS KNEW THE SORENTO WAS A STAR, AND THE NATIONAL HIGHWAY TRAFFIC SAFETY ADMINISTRATION AGREES — SORENTO EARNED NHTSA'S HIGHEST 5-STAR SAFETY RATING FOR BOTH SIDE FRONT IMPACT AND SIDE REAR IMPACT.”

\*5-star results achieved at NHTSA-designated test facility and approved by NHTSA.



# SORENTO

AWARD WINNING. STYLISH. WELL-EQUIPPED. CAPABLE. ROOMY. LOADED WITH SAFETY FEATURES. AND, OF COURSE, AFFORDABLE. YES, WE HAVE IT IN YOUR FAVORITE COLOR.



CLEAR WHITE

ICE BLUE (M)

SAND BEIGE (M)

IVY GREEN (M)

DIAMOND SILVER (M)

INDIGO BLUE (M)

ALPINE GRAY (M)

EBONY BLACK

RUBY RED (M)

Finally, there's an affordable mid-size SUV with all the qualities you want. The Kia Sorento, winner of prestigious accolades for its quality and overall owner satisfaction in 2003. The Sorento LX boasts standard features like a powerful V6 engine, 3,500 lbs. of towing capacity and 5-speed manual transmission with available Sport Package. Plus standard interior features like air conditioning, power windows, door

locks and heated mirrors, AM/FM/CD audio system with 8 speakers, dual front airbags, and front and rear side-curtain airbags. The Sorento EX adds features like a power sunroof, available leather seat trim, alloy wheels, a power driver's seat, roof rack and a premium AM/FM/Cassette/CD audio system with 10 speakers — plus the enhanced performance of available automatic full-time 4-wheel drive. With all this going for it, there's no doubt the Sorento will give you one heck of a great ride. Now, if you could only get your boss to relocate the business to the top of a giant mountain...

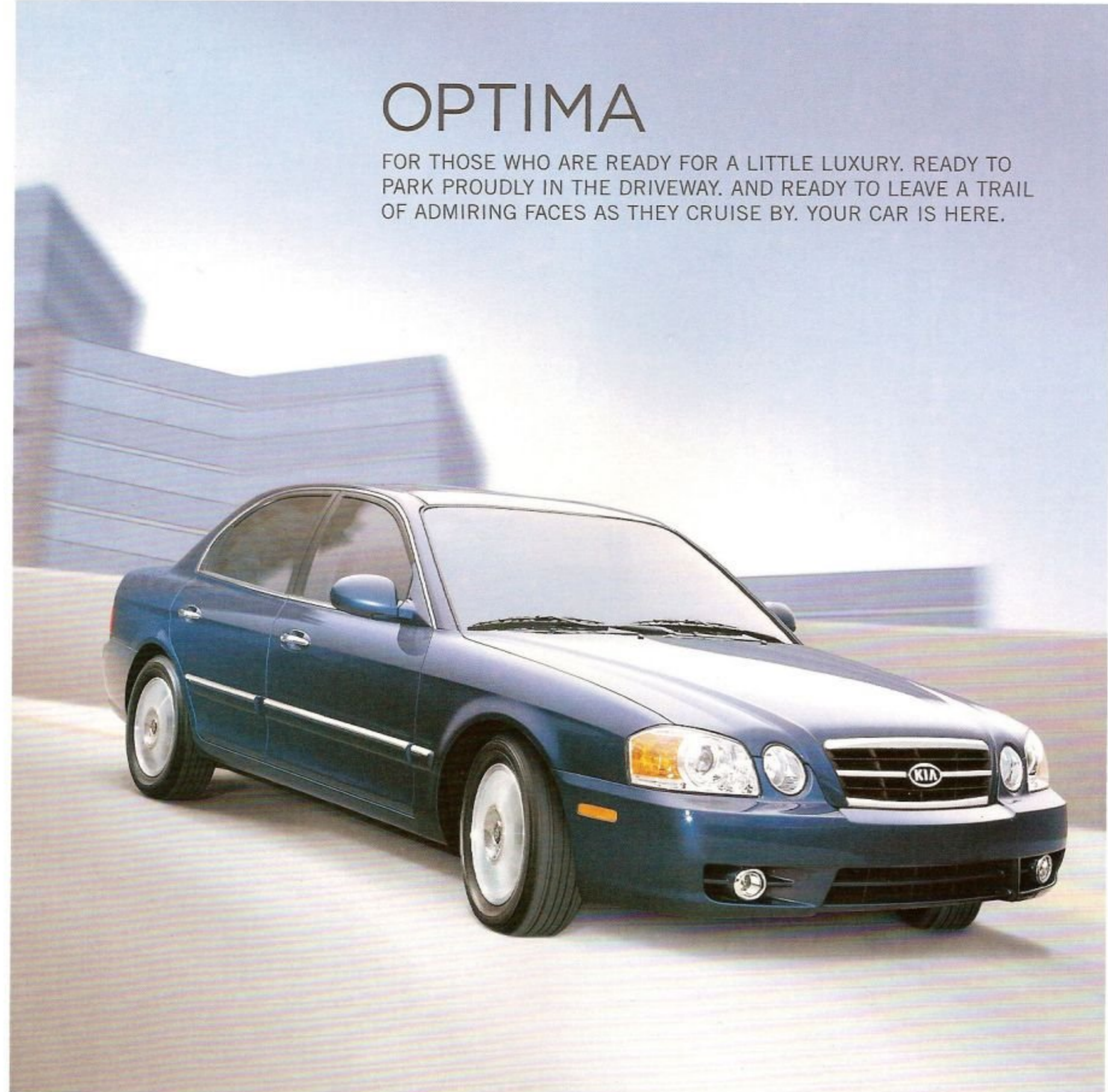
Rear cargo must be properly stowed and secured. See owner's manual.

(M) INDICATES METALLIC PAINT



# OPTIMA

FOR THOSE WHO ARE READY FOR A LITTLE LUXURY. READY TO PARK PROUDLY IN THE DRIVEWAY. AND READY TO LEAVE A TRAIL OF ADMIRING FACES AS THEY CRUISE BY. YOUR CAR IS HERE.



It's the moment you've been waiting for. The day you can move up to a stylish, luxury mid-size sedan without going broke in the process. Well, we're pleased to announce that day is here with the 2004 Kia Optima. Both the LX and EX trim levels offer an available V6 engine with 4-speed Sportmatic™ transmission for the convenience of smoother, pedal-free gear shifting. Both come with dual front and front seat-mounted side airbags, power windows, door locks and mirrors, plus more interior space than many

a worthy competitor. And for a little extra luxury, the EX gives you a power driver's seat, power moonroof, alloy wheels, automatic climate control, a premium AM/FM/Cassette/CD audio system with Infinity speakers and available leather seat trim. There is, however, one feature we didn't give the Optima: a hefty price tag. But somehow, we didn't think you'd mind.

IMPERIAL BLUE (M)	CREAM GOLD
PEARL WHITE	CLEAR WHITE
OLIVE GREEN (M)	DIAMOND SILVER (M)
RUBY RED (M)	
EBONY BLACK	

(M) INDICATES METALLIC PAINT

# SEDONA

YOU WANT PLENTY OF ROOM. LOTS OF POWER. THE GOVERNMENT'S HIGHEST SAFETY RATING. AND ENOUGH CREATURE COMFORTS TO KEEP YOUR FAMILY SO CONTENT, THE PHRASE "ARE WE THERE YET?" BECOMES OBSOLETE.



“★★★★★”  
 QUADRUPLE 5-STAR SAFETY RATING

CLEAR WHITE

IMPERIAL BLUE (M)

SILKY BEIGE (M)

SAGE GREEN (M)

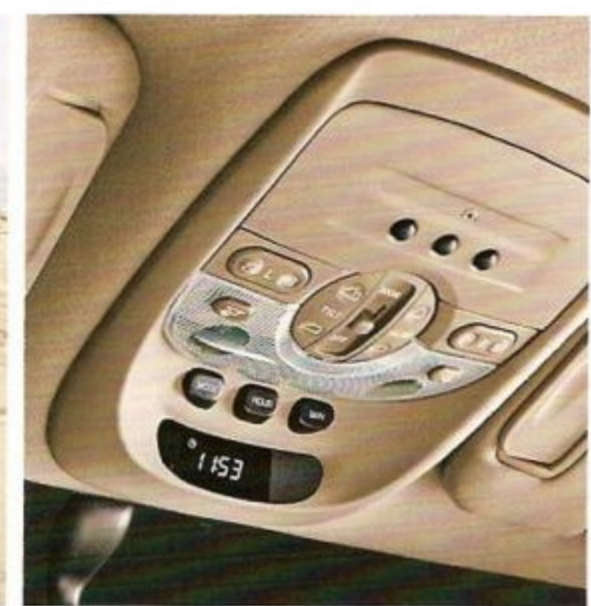
DIAMOND SILVER (M)

DARK EMERALD GREEN (M)

RUBY RED (M)

MIDNIGHT BLACK

Now you can turn your time on the road into quality time with the 2004 Kia Sedona. Both the LX and EX trim levels give you a powerful V6 engine. A 5-speed automatic transmission with overdrive. Available anti-lock brakes. Dual sliding doors. And versatile seating for seven. Plus standard features like front and rear air conditioning, cruise control, power front windows, mirrors



“★★★★★” THE NATIONAL HIGHWAY TRAFFIC SAFETY ADMINISTRATION GAVE THE SEDONA ITS HIGHEST RATING AVAILABLE IN ALL FOUR CRASH TEST CATEGORIES: FRONTAL DRIVER IMPACT, FRONTAL PASSENGER IMPACT, SIDE FRONT IMPACT AND SIDE REAR IMPACT.\*

\*5-star results achieved at NHTSA-designated test facility. \*\*approved by NHTSA.

and door locks, and a AM/FM/CD audio system with 6 speakers. And if you choose the EX, you'll get great extras like a premium AM/FM/Cassette/CD audio system, alloy wheels, a roof rack, and available power sunroof and leather seat trim. But most importantly, both the Sedona LX and EX have received the government's highest 5-star safety rating in all four crash-test categories. No wonder Sedona won AutoPacific's "Best in Class Vehicle Satisfaction" award for best minivan of 2002. So check out this year's Sedona. And don't forget to bring the family.



## SPECTRA 5-DOOR

IT GIVES YOU SPACE AND SPORTY STYLE. IT GIVES YOU A REASON TO GO TO THE STORE. EVEN WHEN YOU DON'T NEED ANYTHING. AND IT GIVES IT ALL TO YOU AT A PRICE YOU CAN AFFORD.



## SPECTRA 4-DOOR

AT LAST, YOU CAN PULL UP TO THE VALET WITHOUT HESITATION. CARPOOL WITH YOUR ATTRACTIVE NEW CO-WORKER. WAVE TO YOUR NEIGHBORS AS YOU DRIVE BY. AND FEEL GREAT ABOUT HOW LITTLE YOU PAID FOR THE PRIVILEGE OF DOING ALL OF THE ABOVE.

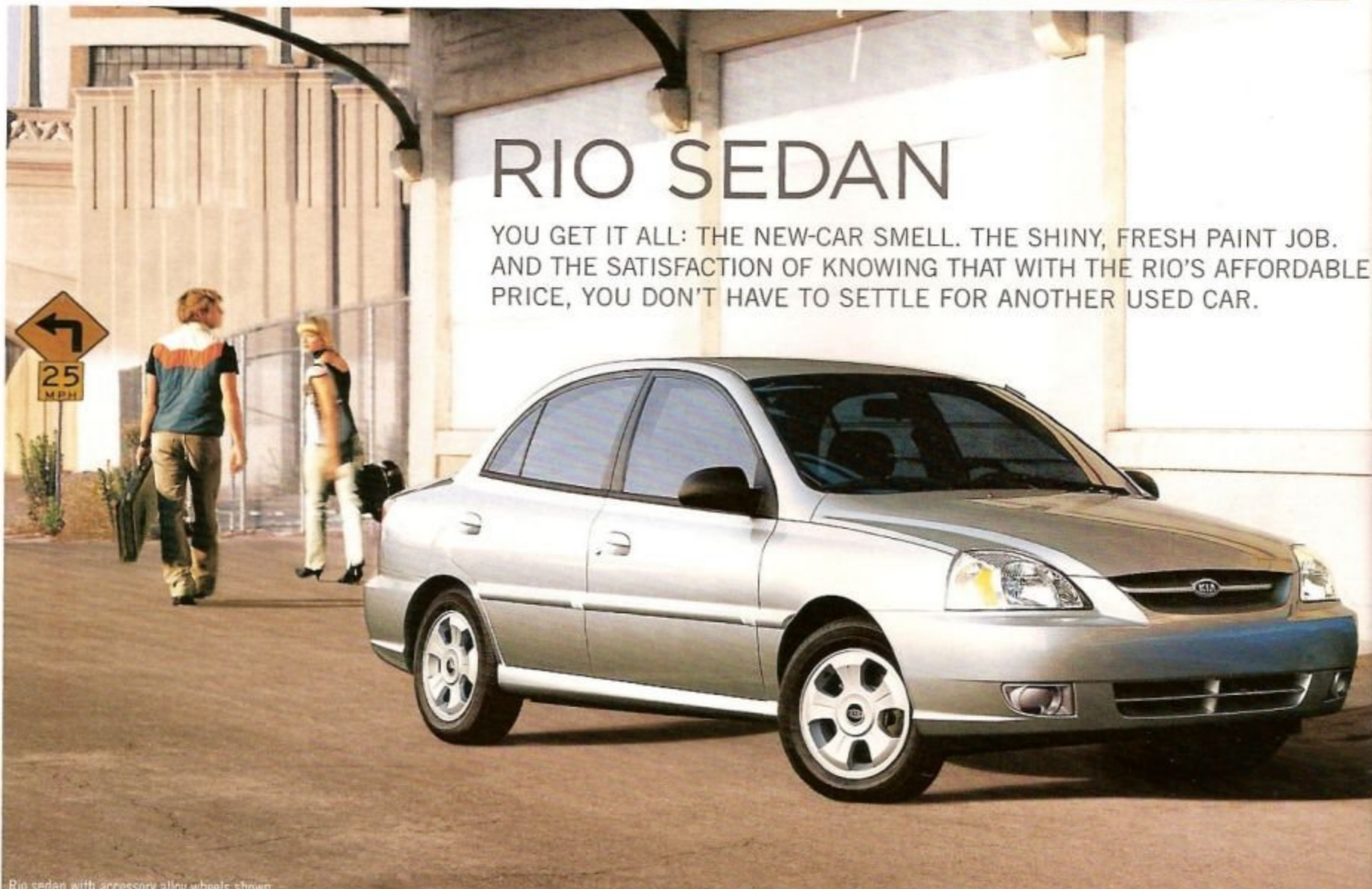
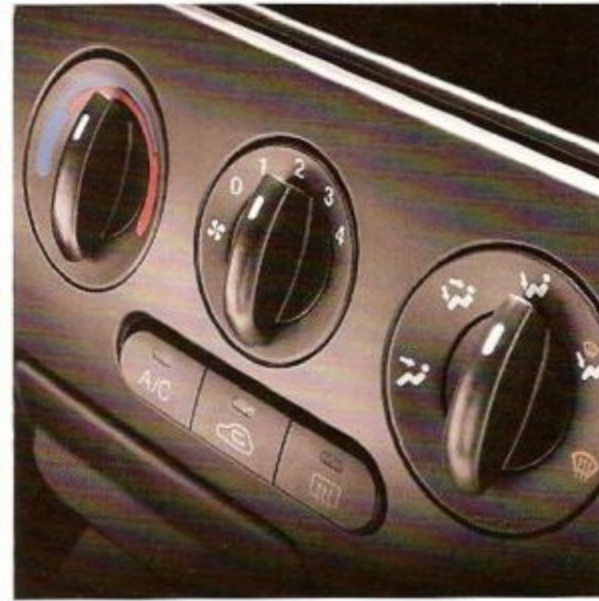
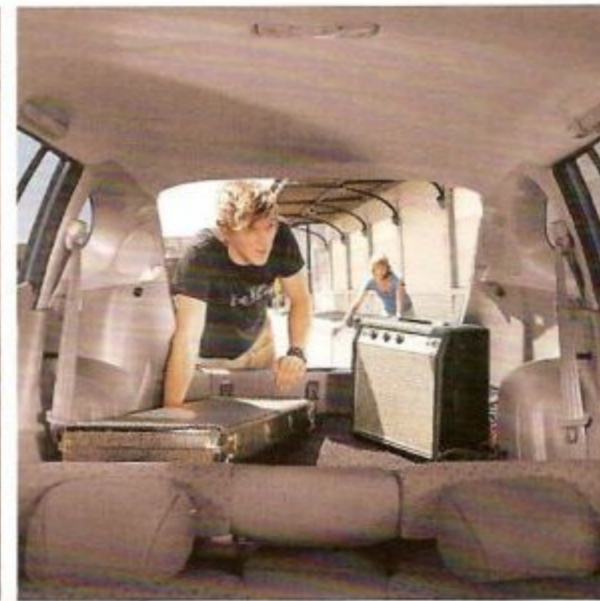
Ready to add more reliability to your life, without giving up on style? Meet the 2004 Kia Spectra, in your choice of models — the 4-door Base and LS sedan or the 5-door GS and GSX hatchback. All have sleek lines, distinctive styling and a responsive engine. All have an AM/FM/CD audio system, an 8-way adjustable driver's seat with lumbar support, 60/40-split folding rear seats, a center storage console with folding padded armrest, dual adjustable cup holders and dual front airbags. The LS and GSX have additional standard features like air conditioning,

fog lamps, power windows, mirrors and door locks, and available anti-lock brakes and cruise package. If you choose the GSX, you'll also get lots of convenient hatchback storage — along with sporty alloy wheels, a rear spoiler and a leather-wrapped steering wheel and gear-shift knob. And of course, all Spectras come standard with a very happy driver behind the wheel.

INDIGO BLUE (M)	CLEAR WHITE
CLASSIC RED	DIAMOND SILVER (M)
EBONY BLACK	STONE BEIGE (M)
EVERGREEN (M)	PEWTER GRAY (M)
RUBY RED (M)	

(M) INDICATES METALLIC PAINT

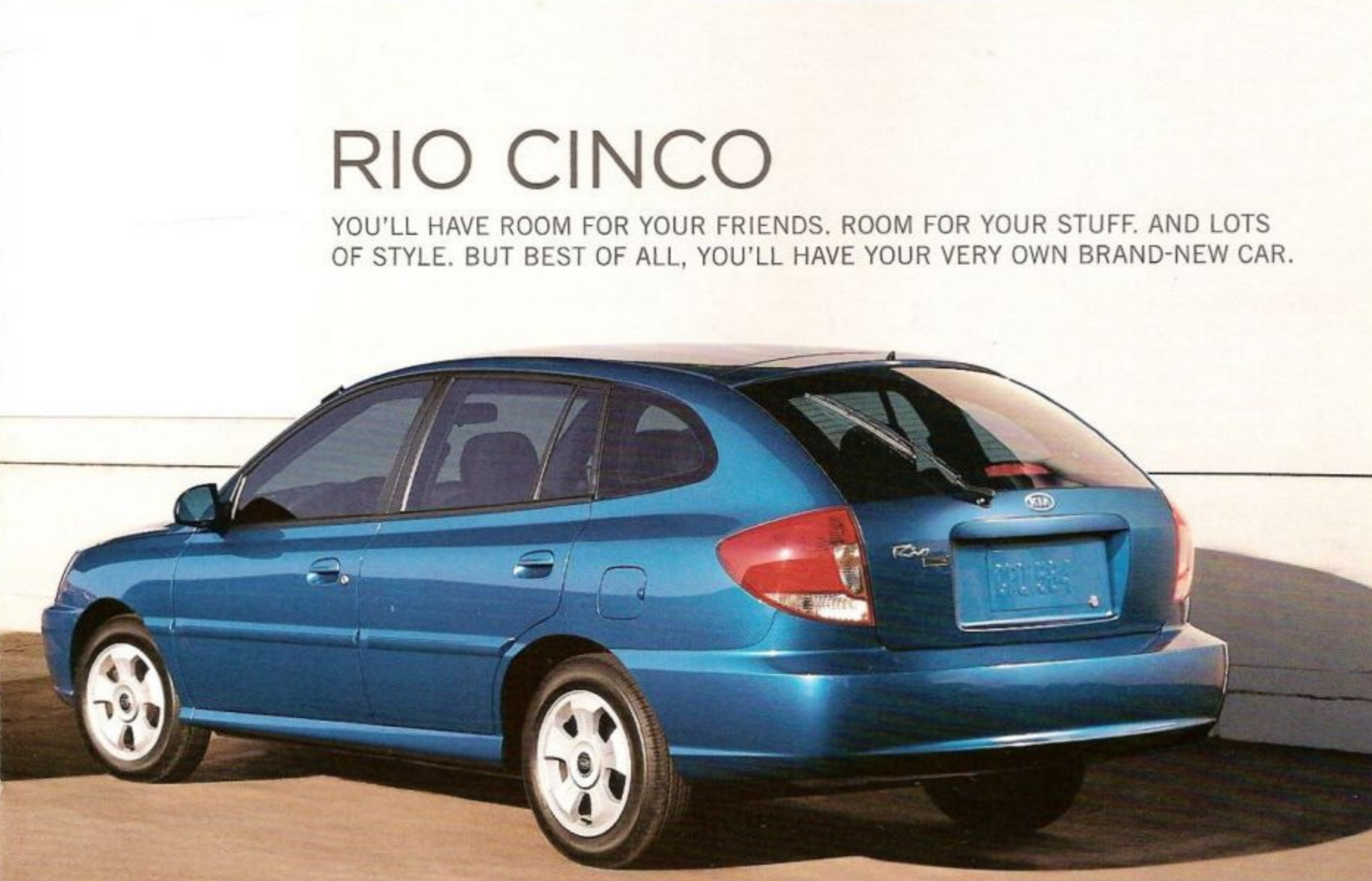




## RIO SEDAN

YOU GET IT ALL: THE NEW-CAR SMELL. THE SHINY, FRESH PAINT JOB. AND THE SATISFACTION OF KNOWING THAT WITH THE RIO'S AFFORDABLE PRICE, YOU DON'T HAVE TO SETTLE FOR ANOTHER USED CAR.

Rio sedan with accessory alloy wheels shown.



## RIO CINCO

YOU'LL HAVE ROOM FOR YOUR FRIENDS. ROOM FOR YOUR STUFF. AND LOTS OF STYLE. BUT BEST OF ALL, YOU'LL HAVE YOUR VERY OWN BRAND-NEW CAR.

DIAMOND SILVER (M)	RALLY BLUE (M)
LIGHT GOLD (M)	MIDNIGHT BLACK
POLAR WHITE	PEWTER GRAY (M)
CINNAMON (M)	WILLOW GREEN (M)
BLUEBERRY (M)	CLASSIC RED

(M) INDICATES METALLIC PAINT

Now it's easier than ever to experience that new-car feeling with the 2004 Rio and the 2004 Rio Cinco — the most affordable 4-door sedan in America\* and its versatile 5-door counterpart. The stylish Rio 4-door sedan comes standard with dual front airbags, a height-adjustable driver's seat, dual cup holders, dual-remote outside mirrors and available upgrade package.

Want a great-looking hatchback instead? The Cinco's 5-door design gives you lots of convenient storage space, plus standard features like an AM/FM/CD audio system and a rear wiper with washer. Both models even offer available power packages. And of course, both give you a spirited engine to make every ride a pleasant one. But perhaps the best thing about the Rio sedan and the Rio Cinco is that with their affordable price tag, they're both ready, willing and able to be yours. All yours.

\*Rio was the lowest-priced 4-door sedan in America based on a comparison of MSRPs as of August 2003.

# FEATURES



## RIO SEDAN

### SEDAN EQUIPMENT INCLUDES:

- 104-hp 1.6-liter DOHC 4-cylinder engine
- 5-speed manual transmission
- Automatic transmission\*
- 4-wheel ABS\*
- P175/65R14 tires w/full wheel covers
- Body-color rear spoiler\*
- Tinted glass
- Rear window defroster
- 8-way adjustable driver's seat w/lumbar support
- Driver's seat fold-down armrest
- Dual front/rear cup holders
- Full cloth seat trim
- Air conditioning\*
- AM/FM/CD stereo\*
- Variable intermittent wipers
- Dual front airbags
- Side-door impact beams
- Rear child safety door locks
- Lower Anchors & Tethers for Children (LATCH)
- Height-adjustable front seat belt anchors

### UPGRADE PACKAGE

(in addition to, or in place of Sedan equipment)

- Power steering
- Body-color body side moldings
- Dual visor vanity mirrors
- Map lights w/sunglasses holder
- Tilt steering wheel
- Tachometer

### POWER PACKAGE

(in addition to, or in place of Sedan equipment)

- Power windows
- Power door locks



## RIO CINCO

### CINCO EQUIPMENT INCLUDES:

- 104-hp 1.6-liter DOHC 4-cylinder engine
- 5-speed manual transmission
- Automatic transmission\*
- 4-wheel ABS\*
- P175/65R14 tires
- Alloy wheels
- Power steering
- Body-color body side molding
- Tinted glass
- Rear window defroster
- 8-way adjustable driver's seat w/lumbar support
- Driver's seat fold-down armrest
- Dual front/rear cup holders
- Map lights w/sunglasses holder
- Full cloth seat trim
- 60/40-split folding rear seats
- Air conditioning\*
- AM/FM/CD stereo
- Dual visor vanity mirrors
- Tilt steering wheel
- Tachometer
- 12-volt power point (cargo area)
- Cargo net

- Variable intermittent wipers
- Rear wiper/washer
- Body-color rear spoiler\*
- Dual front airbags
- Side-door impact beams
- Rear child safety door locks
- Lower Anchors & Tethers for Children (LATCH)
- Height-adjustable front seat belt anchors

### POWER PACKAGE

(in addition to, or in place of Cinco equipment)

- Power windows
- Power door locks



## SPECTRA 4-DOOR

### BASE EQUIPMENT INCLUDES:

- 124-hp 1.8-liter DOHC 4-cylinder engine
- 5-speed manual transmission
- Automatic transmission\*
- Power steering
- Tachometer
- P185/65R14 tires w/full wheel covers
- 2-speed intermittent wipers
- Auto-off headlamps
- Rear window wiper/washer
- Rear window defroster
- Air conditioning\*
- AM/FM/CD stereo
- Full cloth seat trim
- 8-way adjustable driver's seat
- 60/40-split folding rear seats
- Center storage console/armrest
- Body-color mirrors/handles/bumpers/body side moldings
- Map lights w/sunglasses holder
- Dual vanity mirrors w/covers
- Dual front airbags
- Side-door impact beams
- Lower Anchors & Tethers for Children (LATCH)
- Front seat belt pretensioner w/force limiter

### LS EQUIPMENT INCLUDES:

(in addition to, or in place of Base equipment)

- Fog lamps
- Air conditioning
- Power windows/mirrors/door locks
- Tilt steering wheel
- Front door panel bottle holder
- 4-wheel ABS\*
- Alloy wheels\*
- Cruise package (cruise control & variable intermittent wipers)\*



## SPECTRA 5-DOOR

### GS EQUIPMENT INCLUDES:

- 124-hp 1.8-liter DOHC 4-cylinder engine
- 5-speed manual transmission
- Automatic transmission\*
- Power steering
- P185/65R14 tires w/full wheel covers
- 2-speed intermittent wipers
- Auto-off headlamps
- Rear window wiper/washer
- Rear window defroster
- Air conditioning\*
- Bright exhaust tip
- Tachometer
- AM/FM/CD stereo
- Full cloth seat trim
- 8-way adjustable driver's seat
- 60/40-split folding rear seats
- Center storage console/armrest
- Body-color mirrors/handles/bumpers/body side moldings
- Map lights w/sunglasses holder
- Dual vanity mirrors w/covers
- Dual front airbags
- Side-door impact beams
- Lower Anchors & Tethers for Children (LATCH)
- Front seat belt pretensioner w/force limiter

### GSX EQUIPMENT INCLUDES:

(in addition to, or in place of GS equipment)

- Alloy wheels
- Fog lamps
- Air conditioning
- Power windows/mirrors/door locks
- Leather-wrapped steering wheel & gearshift knob
- Tilt steering wheel
- Front door panel bottleholder
- Sport-cloth seat trim
- 4-wheel ABS\*
- Cruise package (cruise control & variable intermittent wipers)\*



## OPTIMA

### LX EQUIPMENT INCLUDES:

- 138-hp 2.4-liter DOHC 4-cylinder engine
- 170-hp 2.7-liter DOHC aluminum alloy V6 engine\*
- 5-speed manual transmission
- 4-speed Sportmatic™ transmission\*
- P205/60R15 tires w/full wheel covers
- 16" Michelin tires w/alloy wheels on V6
- Body-color dual outside mirrors/door handles/body side moldings/bumpers
- Rear window defroster
- Air conditioning
- Power windows/mirrors/door locks
- AM/FM/CD w/6 speakers
- Premium AM/FM/Cassette/CD stereo w/Infinity speakers\*
- Cruise control
- 8-way adjustable driver's seat
- 60/40-split folding rear seats
- Rear seat armrest w/storage
- Dual front & rear seat side airbags
- Lower Anchors & Tethers for Children (LATCH)
- Front seat belt pretensioner w/force limiter

### EX EQUIPMENT INCLUDES:

(in addition to, or in place of LX equipment)

- 4-speed Sportmatic transmission
- 15" Michelin tires
- Alloy wheels
- 16" Michelin tires w/alloy wheels on V6
- Fog lamps
- Power moonroof w/inner sunshade
- 8-way power adjustable driver's seat
- 4-way power adjustable passenger's seat\*
- Premium AM/FM/Cassette/CD stereo w/Infinity speakers
- Automatic climate control
- Keyless entry & alarm remote
- Auto-dimming rearview mirror w/HomeLink®
- Leather-wrapped steering wheel/gearshift knob
- Wood/leather wrapped steering wheel\*
- Wood grain interior accents
- Leather seat trim\*
- 4-wheel ABS\*



## AMANTI

### BASE EQUIPMENT INCLUDES:

- 200-hp 3.5-liter DOHC V6 engine
- 5-speed Sportmatic transmission
- P225/60R16 tires w/alloy wheels
- Full size spare w/alloy wheel
- Fog lamps
- Dual-zone automatic climate control
- Power windows/heated mirrors/door locks
- AM/FM/Cassette/CD w/8-speakers
- 8-way power adjustable driver's seat w/power lumbar support
- 4-way power adjustable passenger seat
- Moquette cloth seat/door trim
- Cruise control
- Leather wrapped steering wheel w/audio and cruise remote control
- Wood grain interior accents
- Keyless entry & alarm remote
- Dual front airbags
- Front and rear side seat mounted airbags
- Front and rear side curtain airbags
- Four-wheel anti-lock brakes
- Front active headrests
- Front seat belt pretensioner w/ force limiter
- Anti-pinch windows
- Lower Anchors & Tethers for Children (LATCH)

### LEATHER PACKAGE:

(in addition to, or in place of Base equipment)

- Leather seats
- 2-position memory for driver's seat & outside mirrors
- Infinity AM/FM/Cassette/6-disc CD audio
- 4" monitor w/trip computer

### CONVENIENCE PACKAGE:

(requires Leather Package)

- Power sunroof w/tilt
- Heated front seats
- HomeLink® programmable garage door opener
- Auto dimming rear view mirrors

### ELECTRONIC STABILITY PROGRAM PACKAGE:

(requires Convenience Package)

- Electronic stability program
- Traction control
- Brake assist



## SORENTO

### LX EQUIPMENT INCLUDES:

- 192-hp 3.5-liter DOHC V6 engine
- Fully boxed ladder frame
- 5-speed manual transmission
- 4-speed automatic transmission\*
- Shift-on-the-fly 4WD w/low range and limited slip rear differential\*
- P245/70R16 tires w/full-size spare tire
- Privacy glass
- Rear liftgate w/flip-up glass
- Rear window wiper/washer/defroster
- Air conditioning
- Power windows/heated mirrors/door locks
- Cruise control
- AM/FM/CD w/8 speakers
- 8-way adjustable driver's seat w/lumbar
- 60/40-split flat folding rear seats
- Four 12-volt power points
- Dual front airbags
- Front and rear side curtain airbags
- Lower Anchors & Tethers for Children (LATCH)
- Front seat belt pretensioner w/force limiter
- 4-wheel ABS\*

### SPORT PACKAGE:

(available on 5-speed manual)

- Alloy wheels
- Side step bars
- Roof rack
- Fog lamps
- Remote keyless\*

### EX EQUIPMENT INCLUDES:

(in addition to, or in place of LX equipment)

- 4-speed automatic transmission
- Two-tone body side cladding/bumpers
- Alloy wheels w/full-size alloy spare
- Power sunroof w/tilt
- Fog lamps
- Roof rack
- Moquette velour cloth seat/door trim
- 8-way power adjustable driver's seat
- Delphi premium AM/FM/Cassette/CD w/10 speakers, separate amplifier
- Multi-meter
- Remote keyless entry w/panic alarm
- HomeLink® programmable garage door opener
- Leather seat trim\*
- Torque-On-Demand® full-time 4WD\*



## SEDONA

### LX EQUIPMENT INCLUDES:

- 195-hp 3.5-liter DOHC V6 engine
- 5-speed automatic transmission
- P215/70R15 tires w/full-size spare tire
- Dual sliding doors w/safety reflector edge
- Privacy glass
- Rear window wiper/washer/defroster
- Air conditioning — front & rear
- 7-passenger seating — 2 bucket + 2 bench + 3 bench (sliding, removable 2nd/3rd rows)
- 8-way adjustable driver's seat w/lumbar
- Power front windows/mirrors/door locks
- AM/FM/CD w/6 speakers
- DVD entertainment system (available late 2003)\*
- Cruise control
- Dual extendable vanity mirrors w/covers
- 10 cup holders
- Dual glove boxes
- Dual front airbags
- Lower Anchors & Tethers for Children (LATCH)
- Front seat belt pretensioner w/force limiter
- Roof rack\*
- 4-wheel ABS\*
- Tow hitch\*

### EX EQUIPMENT INCLUDES:

(in addition to, or in place of LX equipment)

- Alloy wheels w/full-size alloy spare
- Two-tone body side cladding
- Fog lamps
- Body-color roof rack
- 8-way power driver's seat w/lumbar
- 4-way power passenger's seat
- 2nd row captain's chairs
- Power rear quarter windows
- Keyless entry system
- AM/FM/Cassette/CD player w/6-speakers
- HomeLink® programmable garage door opener
- Overhead console w/trip computer
- Auto headlamps
- Leather-wrapped steering wheel & gear shift knob
- Wood grain interior accents
- Leather seat trim\*
- Power sunroof w/sliding sunshade\*
- Rear spoiler\*

# PEACE OF MIND

Should you ever need assistance, just call us toll-free at 1-800-333-4KIA for the Kia dealer or Alternate Service Location (ASL) nearest you. If you need emergency roadside assistance, we'll dispatch help immediately. If you're under warranty and break down more than 150 miles from home, we'll even help foot the bill for your lodging, transportation and food expenses if repairs take more than 24 hours.\*



**10  
YEAR**

**100,000 MILE  
WARRANTY  
PROGRAM**

- 10 YEARS/100,000 MILES LIMITED POWERTRAIN WARRANTY
- 5 YEARS/60,000 MILES LIMITED BASIC WARRANTY
- 5 YEARS/100,000 MILES LIMITED ANTI-PERFORATION WARRANTY
- 5 YEARS UNLIMITED MILES 24-HOUR ROADSIDE ASSISTANCE

KIA WARRANTY PROGRAM FEATURES VARIOUS WARRANTIES, INCLUDING POWERTRAIN AND BASIC WARRANTIES. ALL WARRANTIES ARE LIMITED. SEE DEALER FOR DETAILS OR GO TO KIA.COM.

**KIA MOTORS AMERICA, INC. P.O. BOX 52410 IRVINE, CA 92619-2410**

Part #UM040 PM 001-'04

\*Maximum benefit of \$300 per incident. All information contained herein was accurate and correct at the time of printing. Kia Motors America reserves the right to make changes at any time without notice, and without any obligations as to colors, materials, specifications, features, accessories, packages and models. Some vehicles shown may include optional equipment. Kia Motors America, by the publication and dissemination of this material, does not create any warranties, either expressed or implied, to any Kia products. See your Kia dealer or website for further details concerning Kia's available limited warranties. ©2003 Kia Motors America, Inc. Reproduction of the contents of this material without the expressed written approval of Kia Motors, Inc., is prohibited.