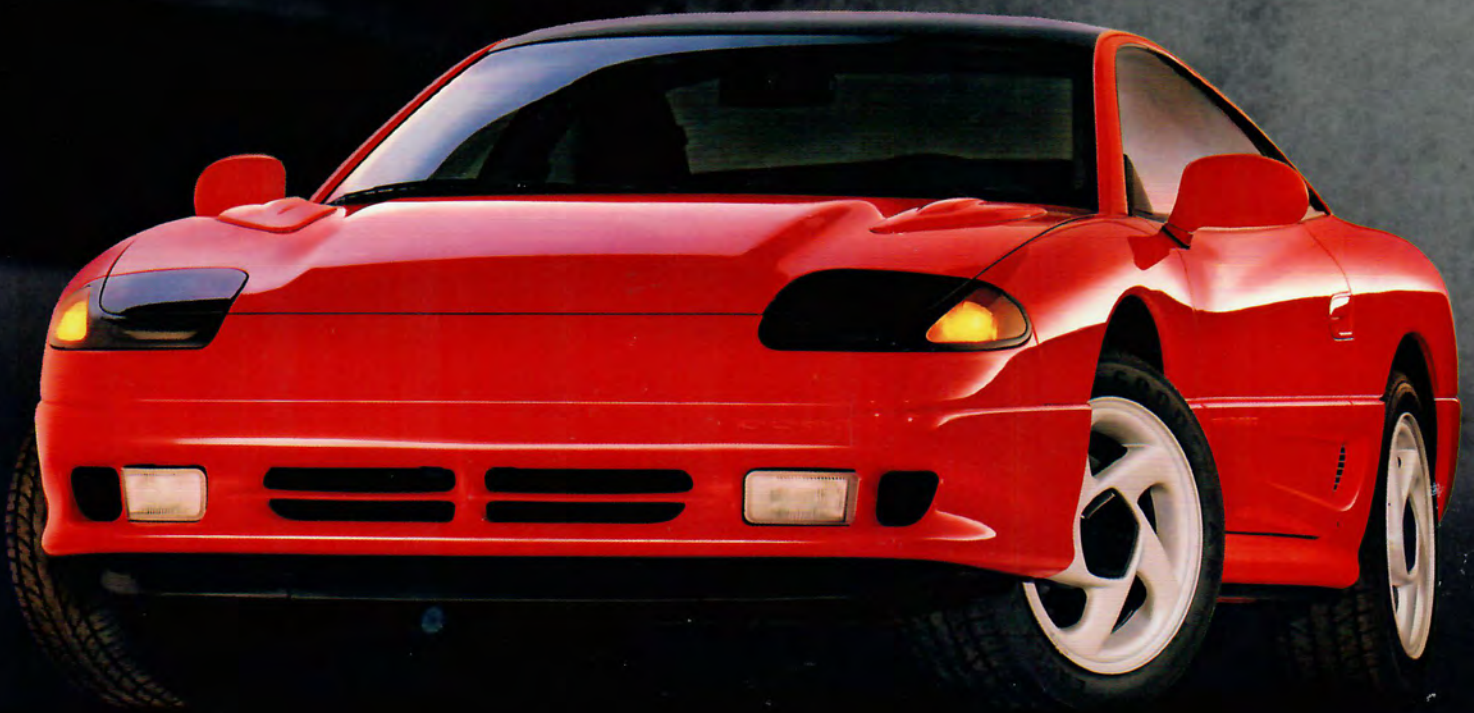


DODGE

*STEALTH
DAYTONA
SPIRIT R/T
SHADOW ES*



AFFORDABLE PERFORMANCE —

ADVANTAGE: DODGE

Every Dodge performance car is created by enthusiasts for enthusiasts who share an all-consuming passion for performance driving. It's a passion the automotive magazines quoted throughout this catalog discovered when they road-tested the Dodge performance lineup and experienced the advantages of multivalve engines, turbocharging, all-wheel drive and antilock brakes...plus the security of driver-side air bags.

These are the advantages Dodge offers every serious driver. Advantages you'll learn more about on every page of this catalog. And advantages you'll experience for yourself when you test-drive an exciting and affordable Dodge performance car.

ADVANTAGE:DODGE

CONTENTS

StealthPage 8

Exotic looks, leading edge engineering and supercar performance...all at a surprisingly affordable price. Four models costing thousands less than Porsche and Corvette.



DaytonaPage 20

A fresh new profile with refined aerodynamics and a choice of V6 and inter-cooled turbo engines that will put you in command of the road... without draining your bank account.



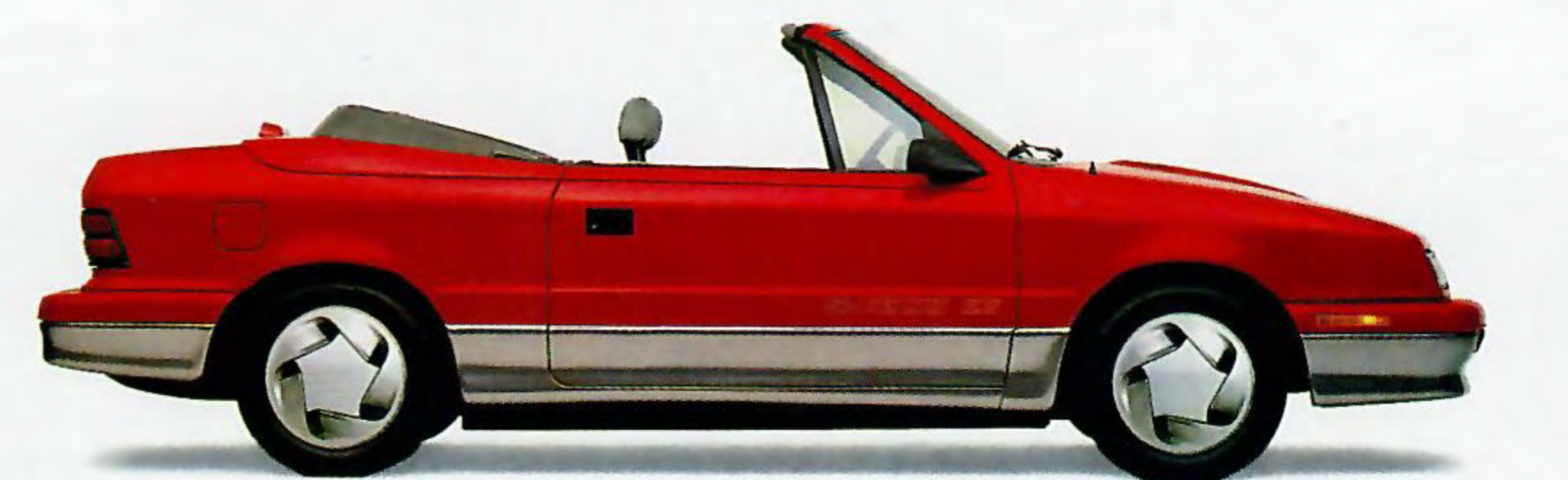
SpiritPage 30

The American sport sedans that offer the power and reflexes of expensive sports cars, plus room for five and the convenience of four doors for family and friends.



Shadow ESPage 38

The four-passenger, front-wheel-drive fun car that's hard to top at any price. The optional turbocharged engine features sequential multipoint fuel injection and twin balance shafts... just like Porsche 944.



Some of the equipment shown or described throughout this catalog is available at extra cost.

Savings on option packages and no charge air conditioning based on cost of package items if purchased separately.

About this catalog. Since the time of printing, some of the information you'll find in this catalog may have been updated. Ask your dealer for details.

At Dodge, safety and performance are inseparable. That's because the engineers responsible for the performance models in the Dodge lineup know that a serious driver can use a vehicle's enhanced responsiveness to avoid accidents.

Time and time again, Dodge's motorsport activities have proven that point. Given the right equipment, a competent, alert driver can usually steer clear, stop short or accelerate away from impending danger.

That doesn't mean you have to drive a Dodge Daytona IROC race car at



Talladega or a Stealth R/T Turbo up Pikes Peak to experience this kind of confidence yourself. You'll find all cars in the Dodge performance lineup offering drive trains, brake systems, suspensions and steering systems that can best be described as "leading edge."

And, in the unlikely event that you ever experience a situation in which you are



unable to avoid an accident, it's good to know that every Dodge performance car is equipped with three-point seatbelts at every outboard seating position, and most offer one important feature race cars don't have...a driver-side air bag.

Chrysler engineers responsible for the creation

of Dodge performance cars realize that most serious drivers want and need a performance car that can perform day in and day out in the real world. That means designing and building in dependability, reliability and quality to compensate



That is exactly why all the cars you find featured here place as much emphasis on things like driver control and corrosion protection as on acceleration and aerodynamics. For instance, you'll discover that most Dodge performance cars offer the exceptional traction and directional stability of front-wheel drive or, in the case of Stealth R/T Turbo, all-wheel drive. Most feature speed-rated all-season tires and four-wheel disc brakes with available antilock brake systems that

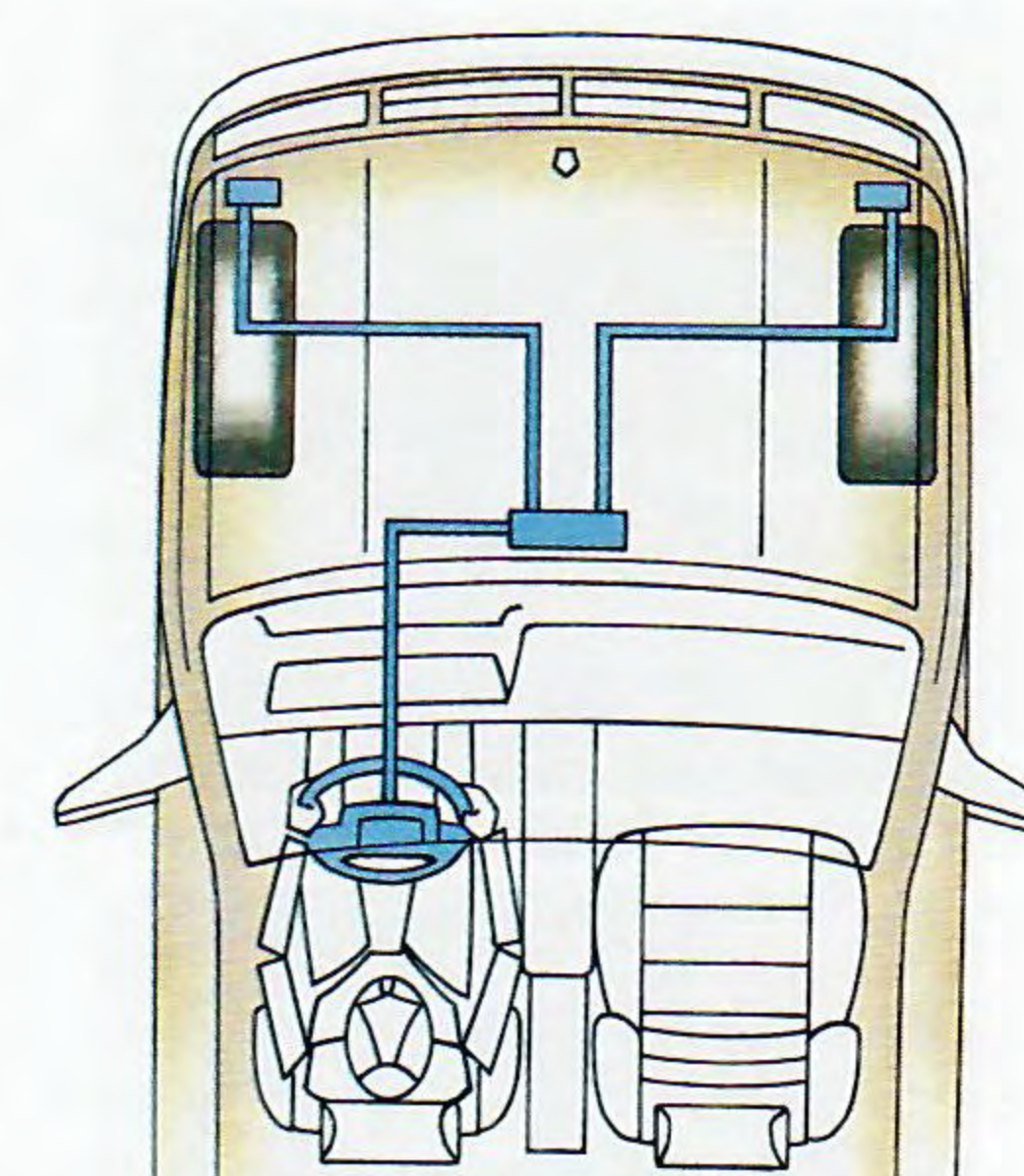


for miles of less-than-perfect roads and weeks of terrible weather.

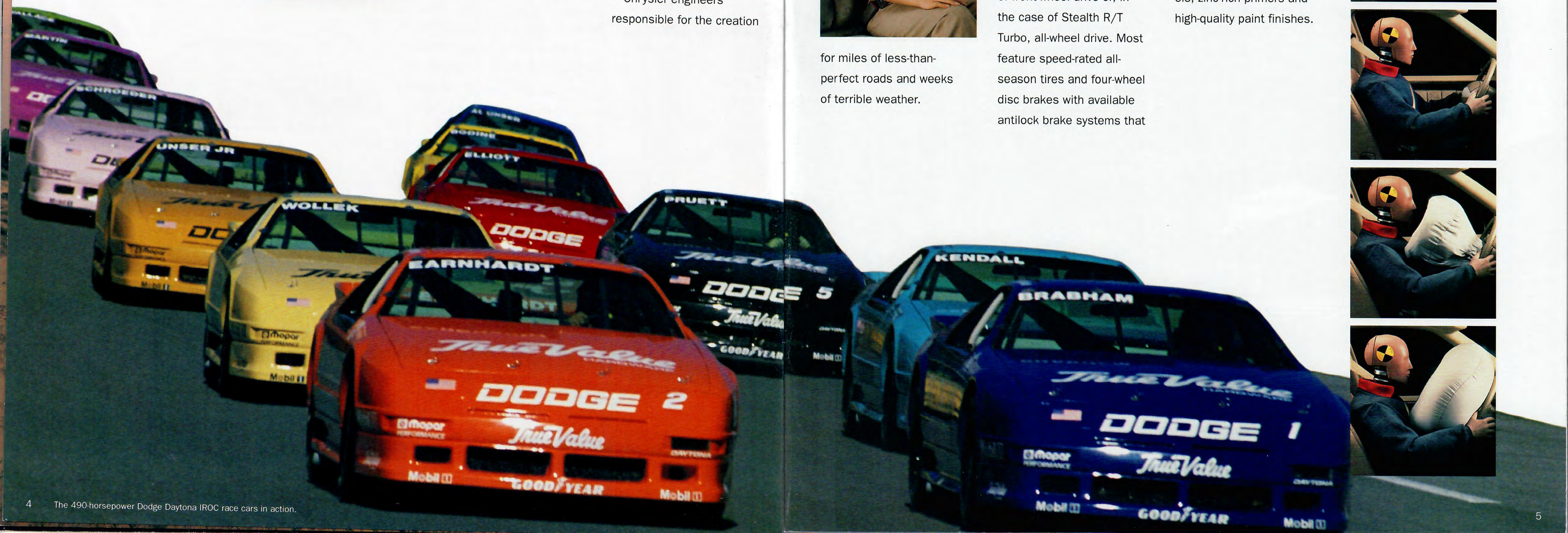
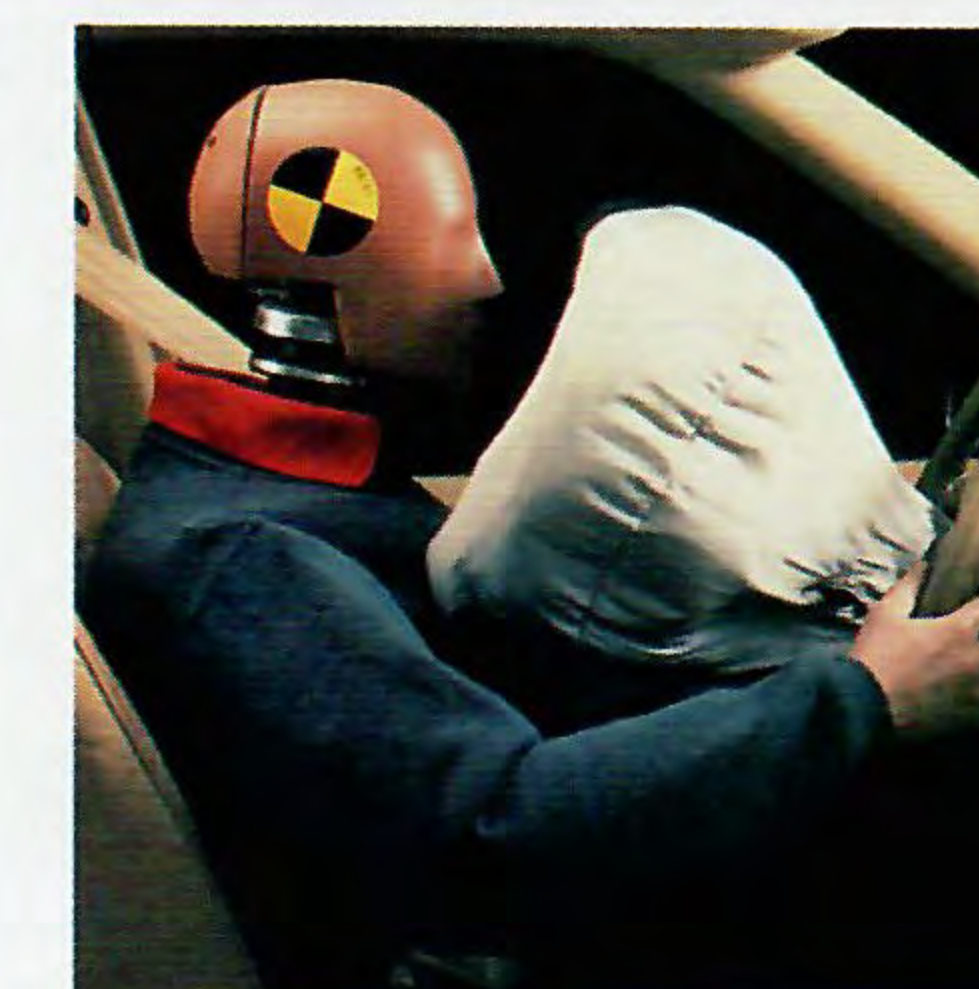
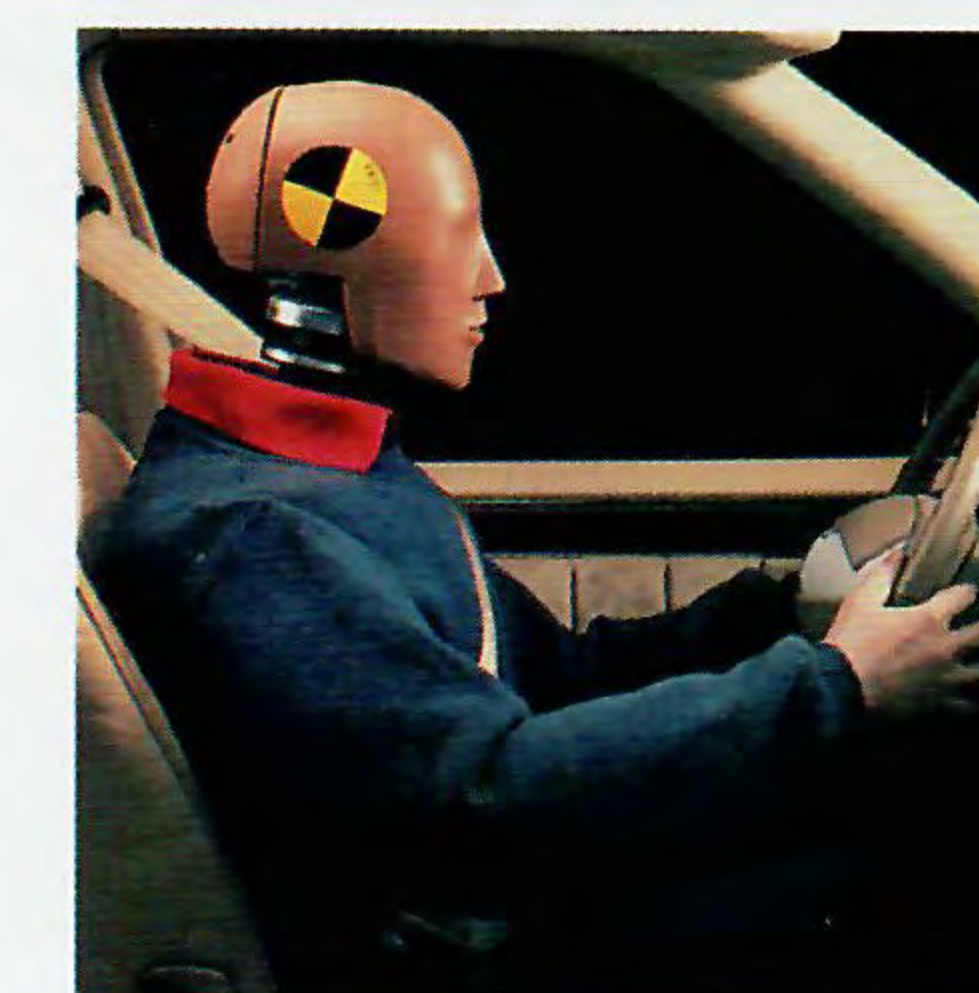
can make a big difference on wet, slick roads.

Enhanced driver visibility is provided by the availability of such features as fog lights, power-heated outside mirrors, rear window wiper/washers, rear window defrosters and tinted glass on most models.

Rust, or corrosion, which can severely compromise the structural integrity of a computer-aided design Unibody, is all but eliminated by the extensive use of galvanized steel body panels, zinc-rich primers and high-quality paint finishes.



Chrysler's air bag circuitry system.



To assist its designers and engineers in the creation of exciting, technologically advanced performance cars, Chrysler Corporation has invested millions of dollars in the latest computer

technology, built a modern technology center and outfitted its manufacturing and testing facilities with the finest equipment and best-trained personnel possible.

World-Class Engineering
Moreover, Chrysler also enlists the engineering talents of automotive performance experts the world over to help fine-tune

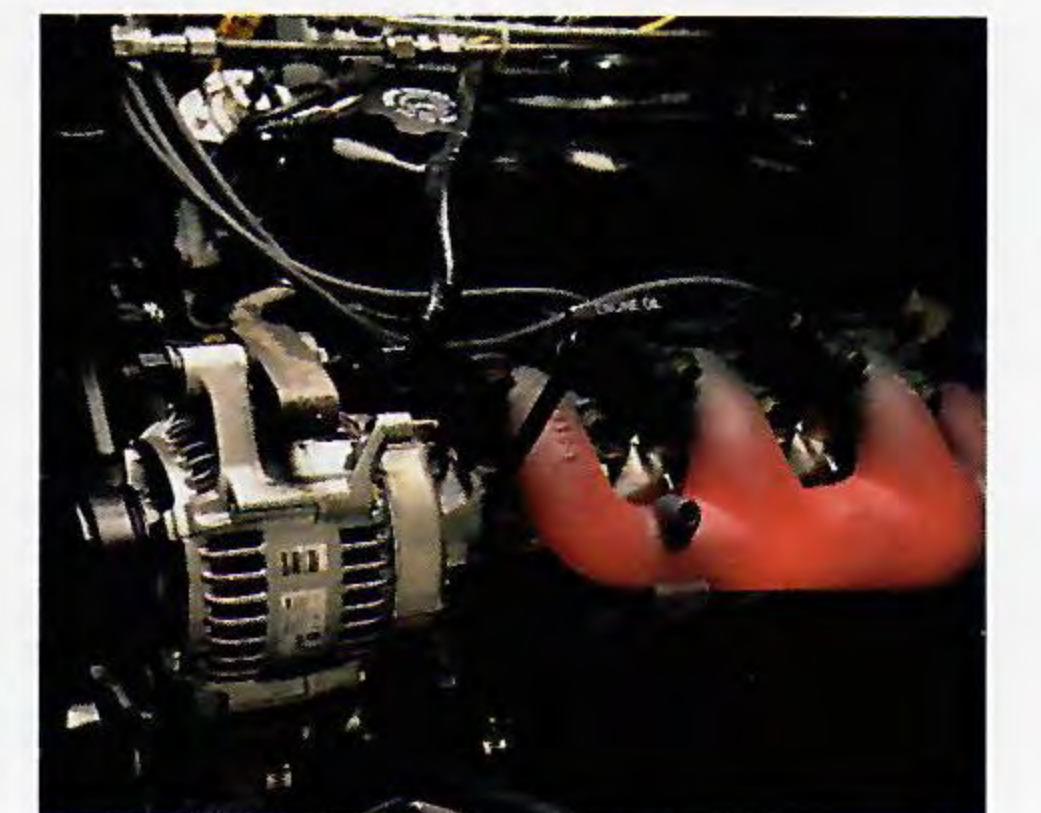
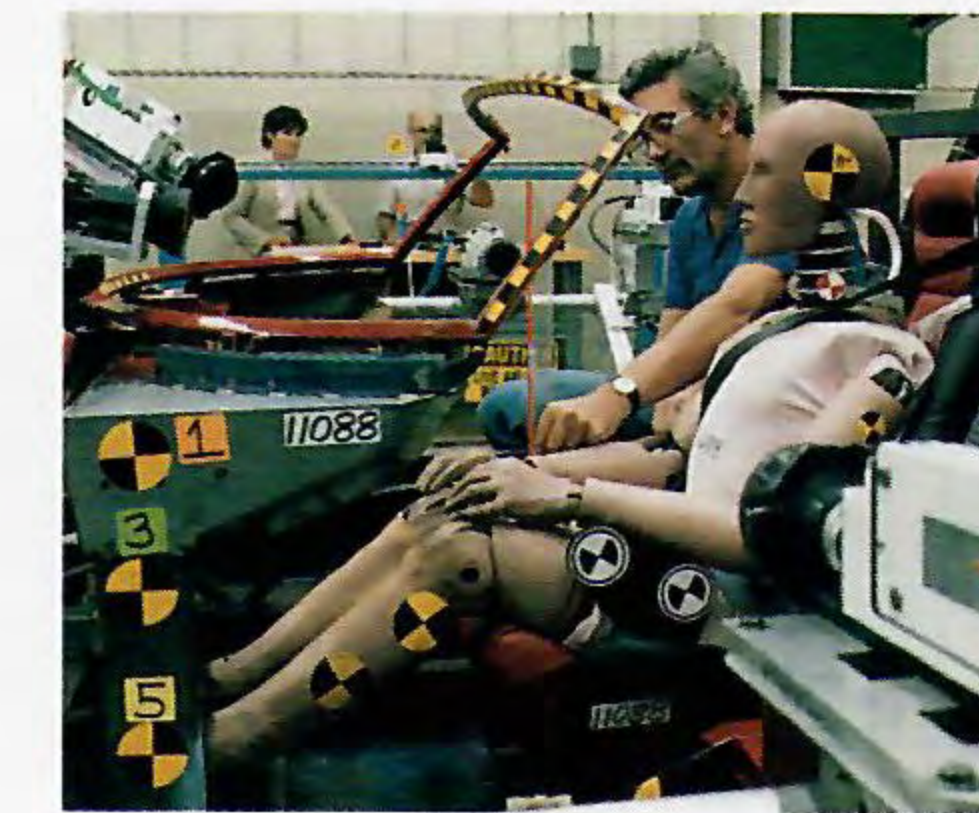
its power trains. So both the Spirit R/T and the upcoming Daytona IROC R/T feature a 16-valve head co-designed by Dodge and Lotus of England to squeeze an impressive 224 horse-

power from a mere 2.2 liters (the Spirit ES and Daytona IROC are available with a silky-smooth 3.0-liter V6).

Fuel-Injected Performance
All of the higher output engines offered in the Dodge performance lineup utilize sequential multiport fuel injection systems that

feature state-of-the-art electronic controls. All four-cylinder performance engines also feature counter-rotating twin balance shafts like those used in the Porsche 944 to significantly reduce engine vibrations.

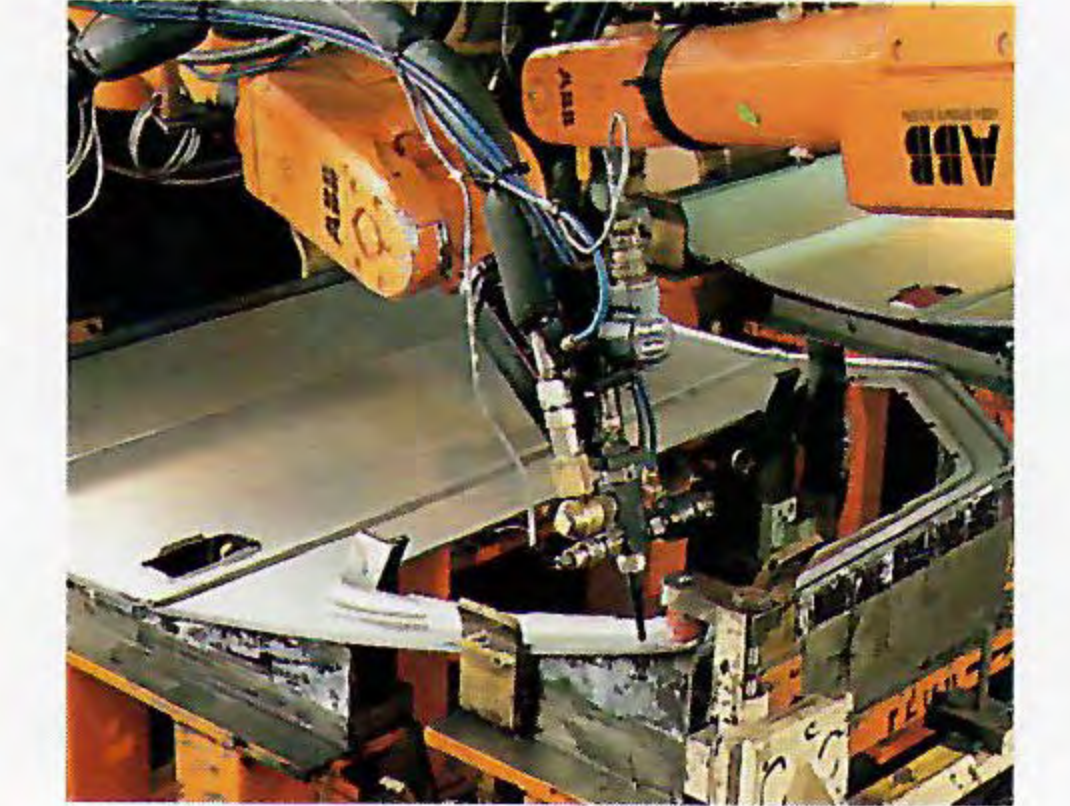
The five-speed manual overdrive transaxles found in Stealth R/T Turbo, Spirit R/T and Daytona IROC R/T employ high-capacity gearsets.



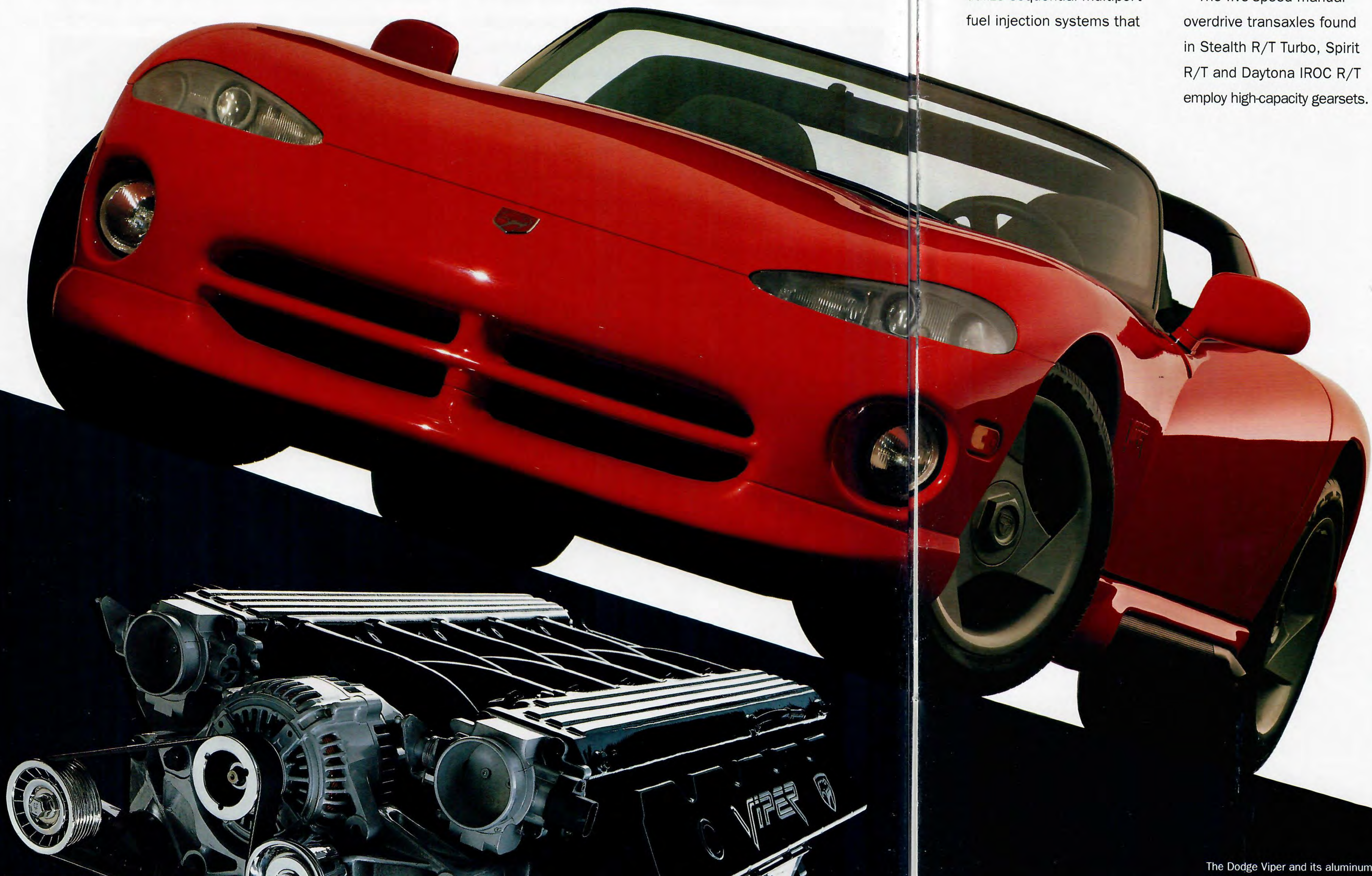
A New Breed of Sportscar

In 1992, Dodge will introduce the limited-production, plastic-bodied Viper, a two-seat high-performance sports car. Its powerful aluminum engine features the only V10 configuration available outside of a Formula 1 race car. Dodge's Team Viper was assisted in the development of this American power plant by engineers from the legendary Chrysler-owned Lamborghini of Italy.

Obviously, the 1992 Dodge performance lineup has utilized every engine technology at its disposal to extract maximum performance efficiency from every cubic inch of engine displacement and every gallon of gasoline.



Now, all that's left to do is experience the dramatic results for yourself. Read about the 1992 Dodge performance cars in the pages that follow, then test-drive any one of them at your nearby Dodge dealer.



The Advantages of Stealth

"Think of it as an affordable Ferrari 348."

—Motor Trend

Since its introduction, the Dodge Stealth R/T Turbo and its three other Stealth stablemates have made quite an impression on the automotive journalists of America. A major factor in Stealth's glowing reviews is the amount of high-performance hardware that's available on every model. The list includes a 3.0-liter V6, power-assisted four-wheel vented disc brakes, power-assisted rack-and-pinion steering, a four-wheel independent suspension, front-wheel drive (all-wheel drive on the R/T Turbo) and an ergonomically exact interior that features a driver-side air bag. And that's just the beginning...

Advantage:Dodge



Stealth R/T Turbo. All-wheel drive, four-wheel steering and a 300-horsepower twin turbocharged/twin intercooled V6 provide maximum performance.



Stealth ES. A 24-valve, dual overhead cam V6 generates 222 horsepower for this front-wheel-drive sport coupe.



Stealth. This 164-horsepower V6-powered front-wheel-drive sport coupe features power-assisted, four-wheel vented disc brakes, a four-wheel independent suspension, and sleek, aerodynamic styling.

The Stealth lineup also features a Stealth R/T model not shown here.



“On the open road there are but a few automobiles that will run with it.”

—Road & Track
Sports & GT Cars

Although *Road & Track* didn't name names, a few come to mind, namely Porsche and Ferrari. That's pretty impressive company for a relatively new class entry like Stealth R/T Turbo, especially when you check out the considerable price differential between Europe's best and Dodge's best. When you discover the type of performance hardware that lies below Stealth R/T Turbo's rakishly aerodynamic surface, the term “value” begins to thoroughly dominate the conversation.

All-Weather Performance

But then, domination is what this Dodge sports car is all about... domination of virtually any kind of roadway, in virtually any kind of weather. The secret? To begin with, there's a high-performance

full-time all-wheel-drive system which uses a center differential and two viscous couplings to limit wheel slippage while assuring an optimum torque split. That means outstanding overall traction on both dry and wet pavement.

All-Wheel Steering

Stealth R/T Turbo also uses all four wheels to steer. As in most cars, there's a power-assisted rack-and-pinion steering system. It allows the driver to steer the front wheels alone at speeds under 30 miles per hour. Above 30, a

special hydraulic actuator activates in-phase rear steering to stabilize the car during aggressive maneuvers.

Electronic Suspension

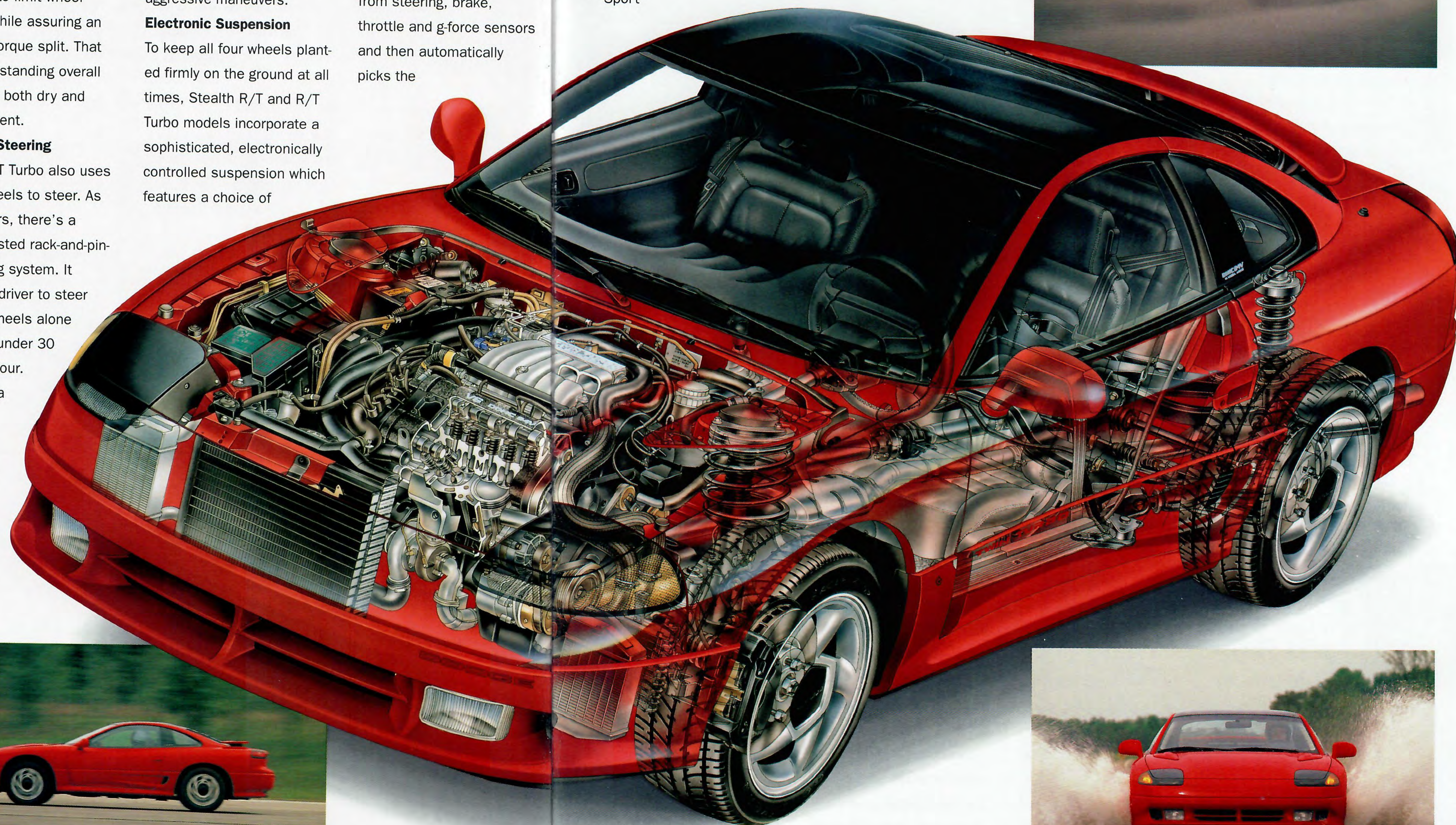
To keep all four wheels planted firmly on the ground at all times, Stealth R/T and R/T Turbo models incorporate a sophisticated, electronically controlled suspension which features a choice of

two driver-selected modes.

In the “Tour” mode, this system processes data from steering, brake, throttle and g-force sensors and then automatically picks the

most appropriate of three damping rates for each shock absorber. In the “Sport”

mode, the shock absorbers are fixed in the firmest setting for optimal control.



“Acceleration that earns Dodge Stealth a place on the elite registry of the world’s supercars.”

—Road & Track

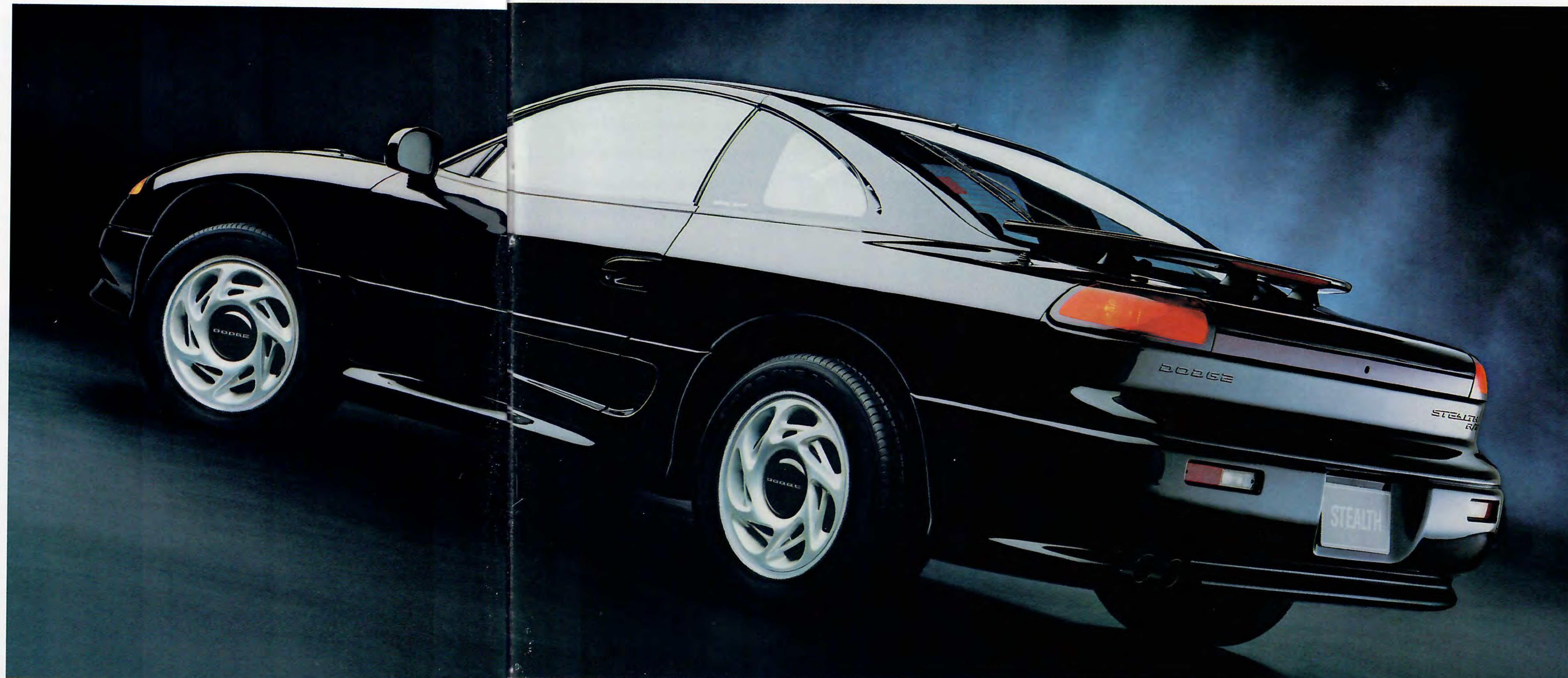
Those people who measure automotive high performance in terms of engine output will be happy to note that Stealth R/T Turbo’s 3.0-liter V6 produces a generous 300 horsepower and 307 pound-feet of torque.

Outstanding Performance

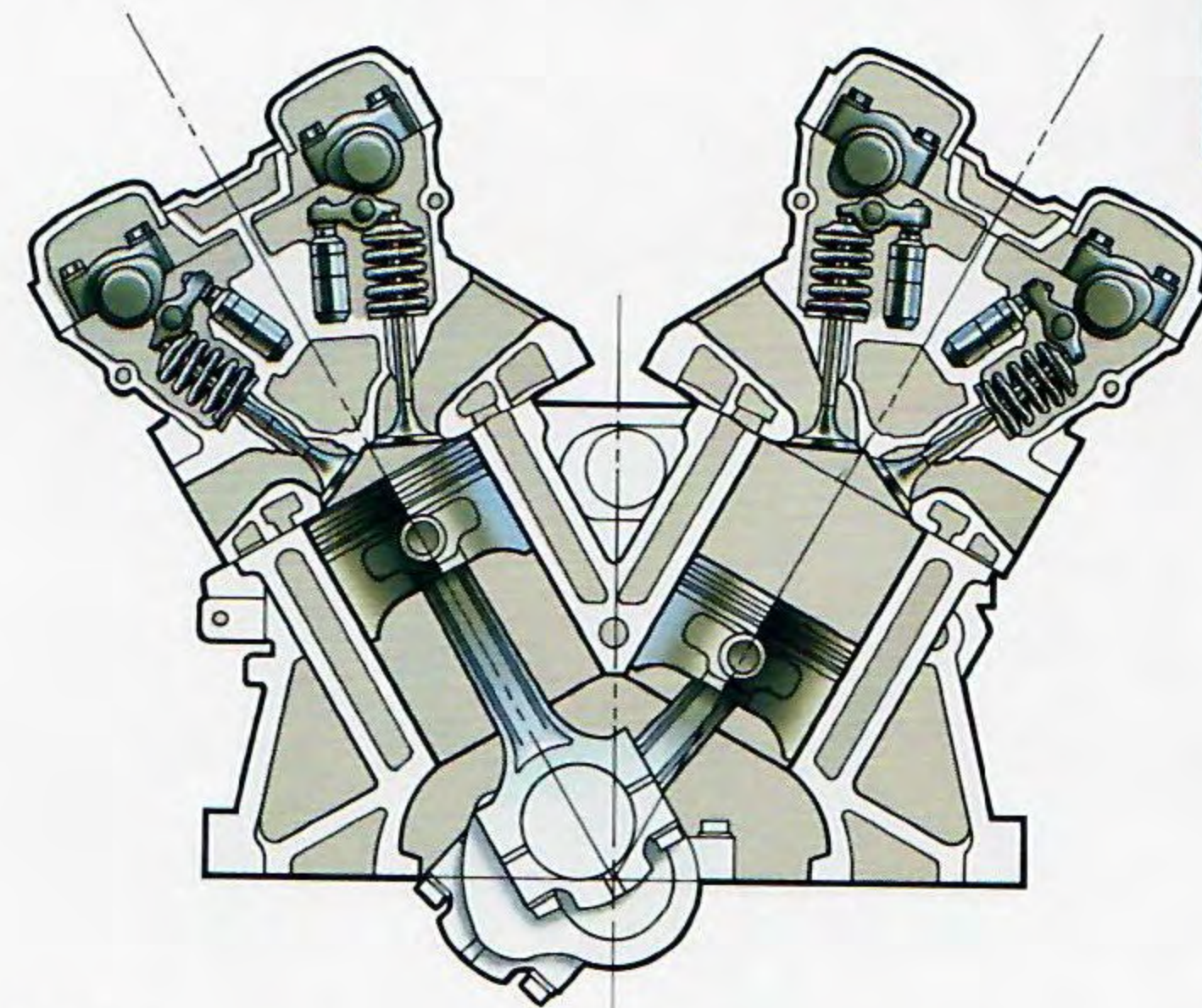
When that considerable horsepower is directed to all

four wheels via the R/T Turbo’s close-ratio Getrag five-speed manual overdrive transaxle and full-time all-wheel-drive system, truly impressive things happen. 60 miles per hour is reached in just under five seconds. A quarter mile is traversed in just under 14 seconds. If you were driving on a test track, you would experience a maximum velocity of 160 miles per hour.

What does it take to massage performance like



Dodge Stealth R/T shown in Jet Black.

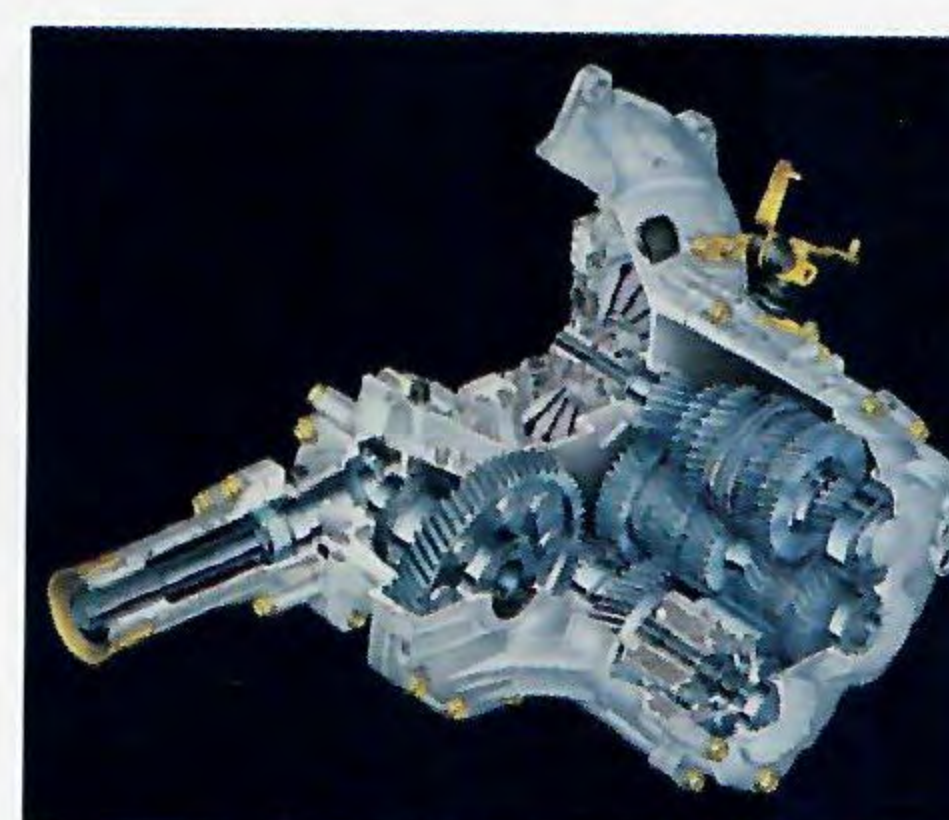


that from just three liters and six cylinders? It takes a commitment to using the most race-proven, advanced engine technology available ...all of it.

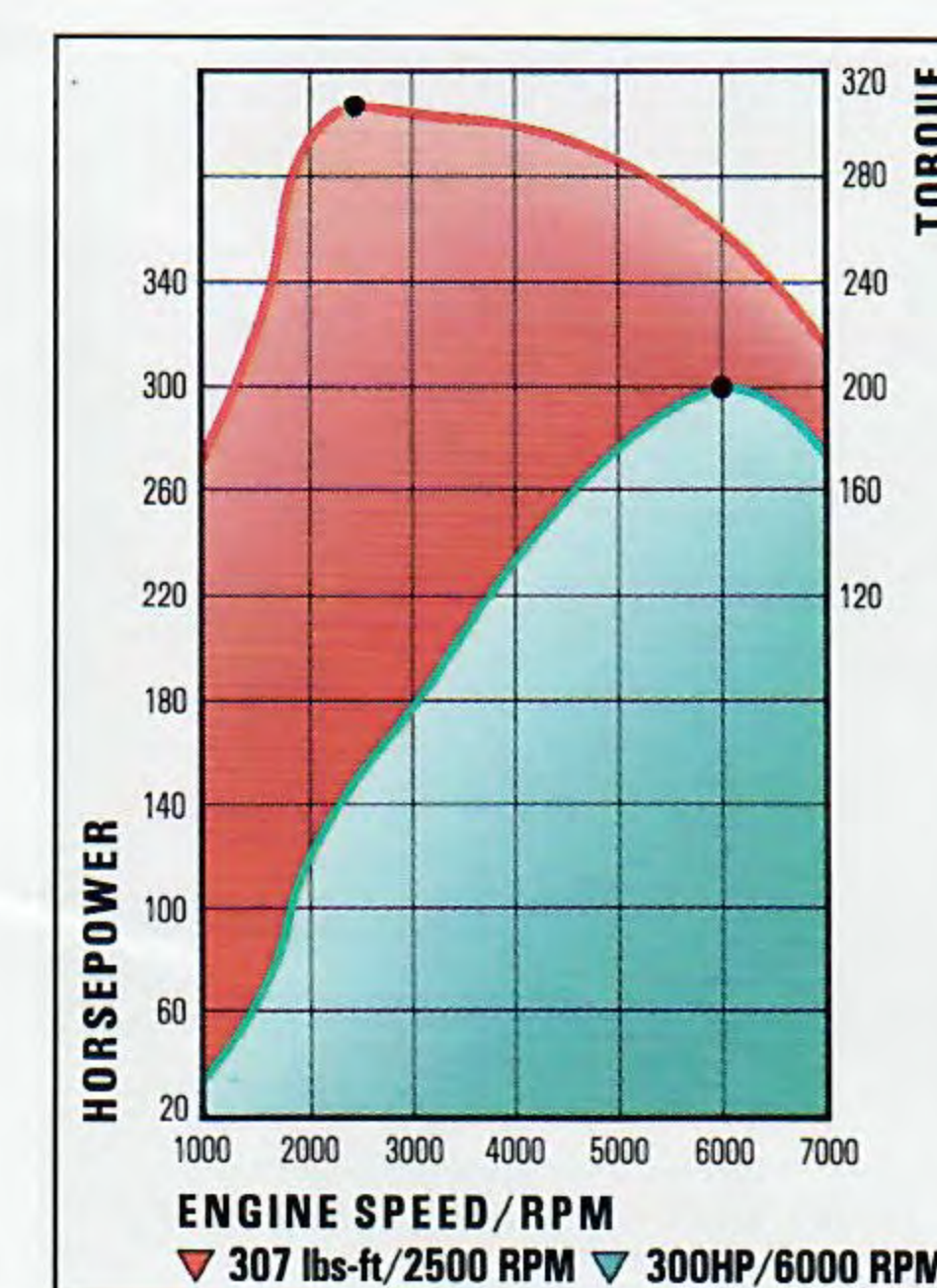
Proven Engine Design

The technology begins with a classic dual overhead cam design (shown above, left) that produces more efficient valve actuation for quicker engine response and four-valve combustion chambers for optimal “breathing.” Aluminum cylinder heads reduce performance-sapping weight and provide excellent heat dissipation.

A structurally rigid cast iron engine block helps maintain overall design integrity in spite of the tremendous forces being generated. Each bank of cylinders has its own turbocharger and each turbocharger has its own intercooler to force as much dense air as possible into each combustion chamber to maximize power while minimizing turbo lag.



Stealth R/T Turbo’s close-ratio Getrag five-speed manual transaxle.



Electronic Engine Controls

A distributorless ignition produces stable, powerful voltage at high engine speeds. Sequential multi-point fuel injection delivers just the right amount of fuel to each combustion chamber where it is ignited by Stealth’s platinum-tipped spark plugs, with the entire process orchestrated by

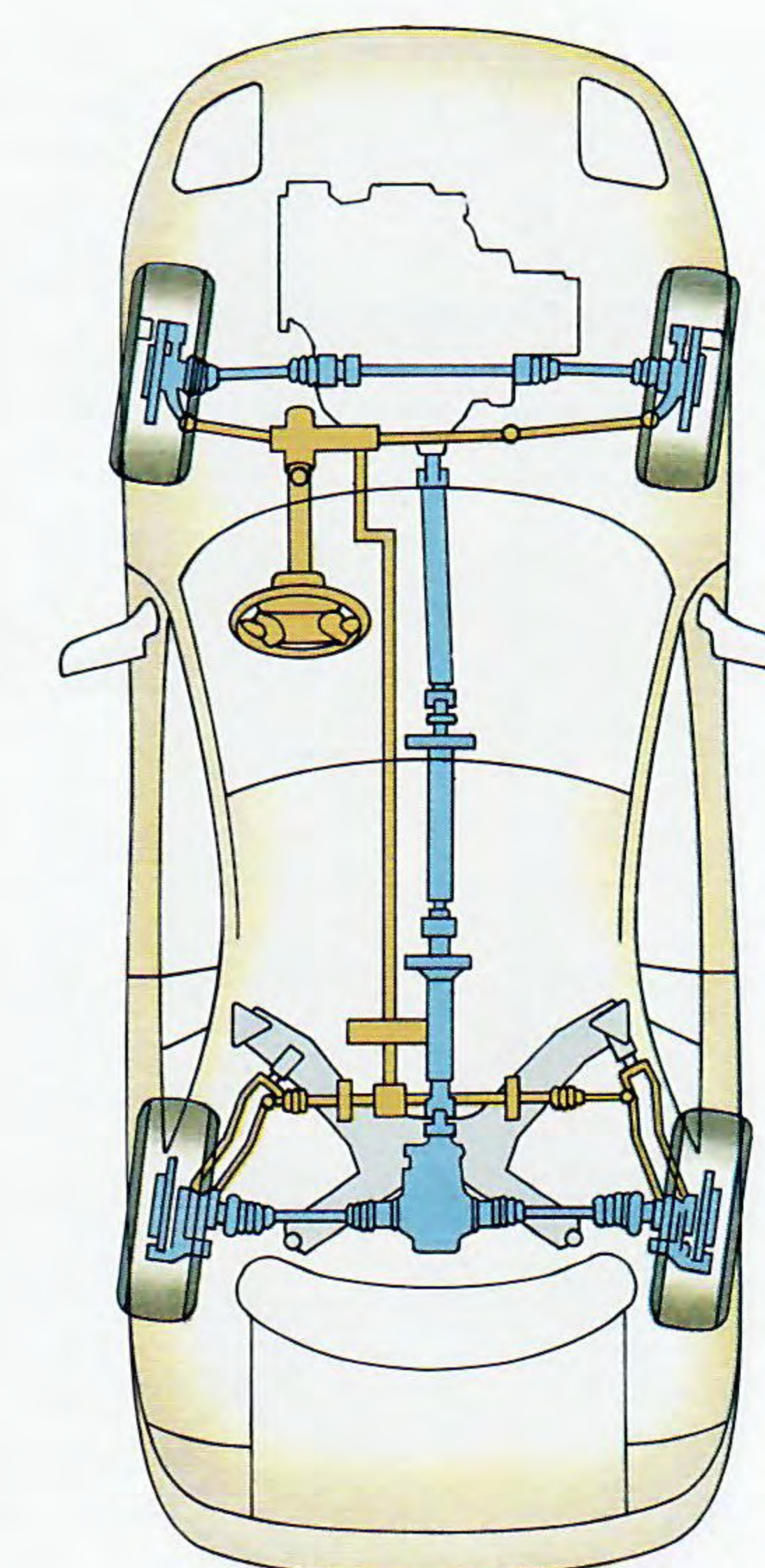
state-of-the-art electronic engine controls. After combustion, the spent gases are exhaled through a performance-tuned, stainless steel dual exhaust system that features a unique driver-adjustable dual mode... restricted for quieter city driving and expanded for maximum performance on the open road.

All of Stealth R/T Turbo’s vast power range would mean little if it could not be transferred effectively from engine to pavement. The five-speed manual overdrive transaxle (shown in cutaway on opposite page) is designed and manufactured by famed

Getrag of Germany and employs double-coned synchronizers on first and second gear and a very precise cable shift system for smooth, responsive gear changes.

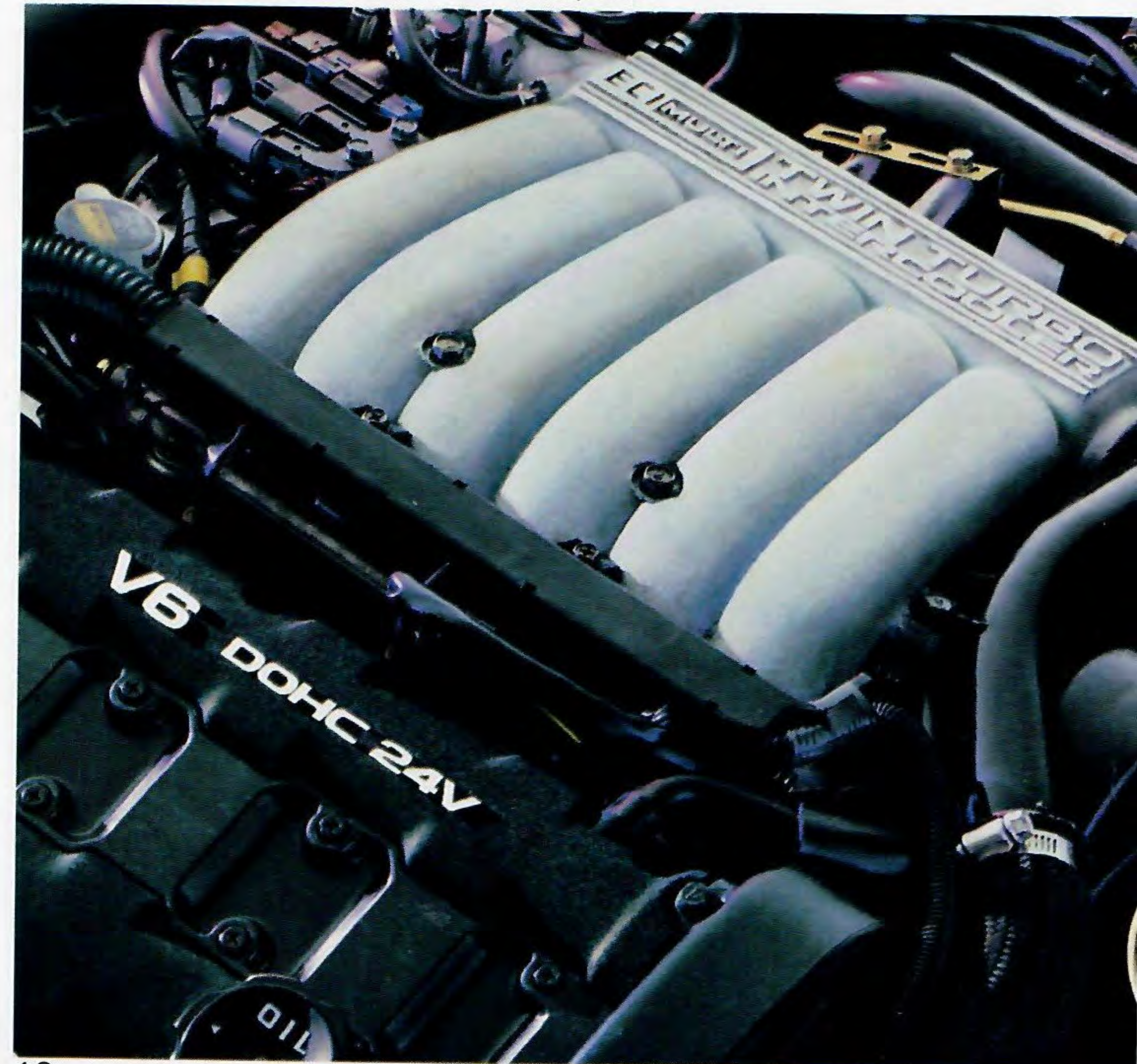
All-Wheel Drive

The power is sent via this gearbox to the previously mentioned (pages 10 and 11) full-time all-wheel-drive system to the four independently suspended 17-inch aluminum road wheels that are shod with P245/45ZR17 unidirectional radial tires specifically designed for high-performance driving and excellent wet weather traction.



Stealth R/T Turbo’s standard all-wheel drive and four-wheel steering.

24 valves plus twin turbos equal 300 horsepower.



Far too often high-performance sports cars provide their drivers with surprisingly low-performance interiors. Not Dodge Stealth. Instead of sacrificing function for form, Stealth's interior designers have married

the two. So Stealth's instrument panel and seats are subtly handsome and businesslike.

The leather-wrapped steering wheel tilts and the contoured driver's sport seat features seatback

angle, height, headrest and lumbar adjustments, as well as extended fore and aft adjustments. So the Stealth driver can "dial in" the optimal seating position for his or her body type and driving style, making all

gauges easy to read and all controls easy to reach.

Stealth R/T and R/T Turbo feature power seating controls and even more adjustments, with leather seating surfaces available as an option.

Occupant Protection

Most important of all, every Stealth features Unibelt three-point restraints at all four outboard seating positions and an air bag in its steering wheel... because Dodge believes

that security and confidence are as important as comfort and convenience.



Stealth R/T Turbo interior shown in Dark Gray leather-with-vinyl-trim.

Dodge Stealth R/T Turbo features driver-oriented controls.





Dodge Stealth ES shown in Emerald Green.

“Before the arrival of the Stealth, about the only production car to offer so much technical esoterica was the Porsche 959 and it sold for around \$250,000.”

—Car and Driver

Maybe you're not into “technical esoterica” even if Stealth R/T Turbo's price tag is substantially less than Porsche 959's (not to mention thousands less than the four-cylinder, “affordable”

Porsche 944). Well, here's some good news for you. There are three other Stealth models with prices beginning at what you'd probably pay for a typical family sedan.

Stealth R/T

If you like the look of the Stealth R/T Turbo, there's the Stealth R/T (shown on pages 12-13). It offers the same 3.0-liter, 24-valve V6 engine, minus the twin turbochargers and inter-coolers, an arrangement that still delivers an impressive 222 horsepower and

201 pound-feet of torque. That power is delivered to the front wheels via your choice of a five-speed manual or four-speed automatic transaxle.

You'll also find Stealth R/T's standard features list retains many of R/T Turbo's key technical ingredients, including ABS, the electronic variable damping suspension and power seat adjustments.

Stealth ES

That same dual overhead cam, 24-valve, 222-horsepower V6 engine is standard

wheel independent suspension, all-season performance radial tires mounted on 15-inch road wheels and a five-speed manual overdrive transaxle to make the most of the standard single overhead cam, 164-horsepower, multipoint fuel-injected V6 engine.

Inside, you'll find cloth-covered sport seats, full analog instrumentation, a leather-wrapped steering wheel, tilt steering column, a four-speaker AM/FM stereo sound system, Unibelt three-point restraints at all outboard seating positions and a driver-side air bag.

A wide range of options and option packages allow you to tailor Stealth and Stealth ES to your own

personal taste and still keep within your budget... even if you want an antilock brake system, or an anti-theft security system (see pages 18 and 19 for full details).



Stealth's Ultimate Sound System with CD player.



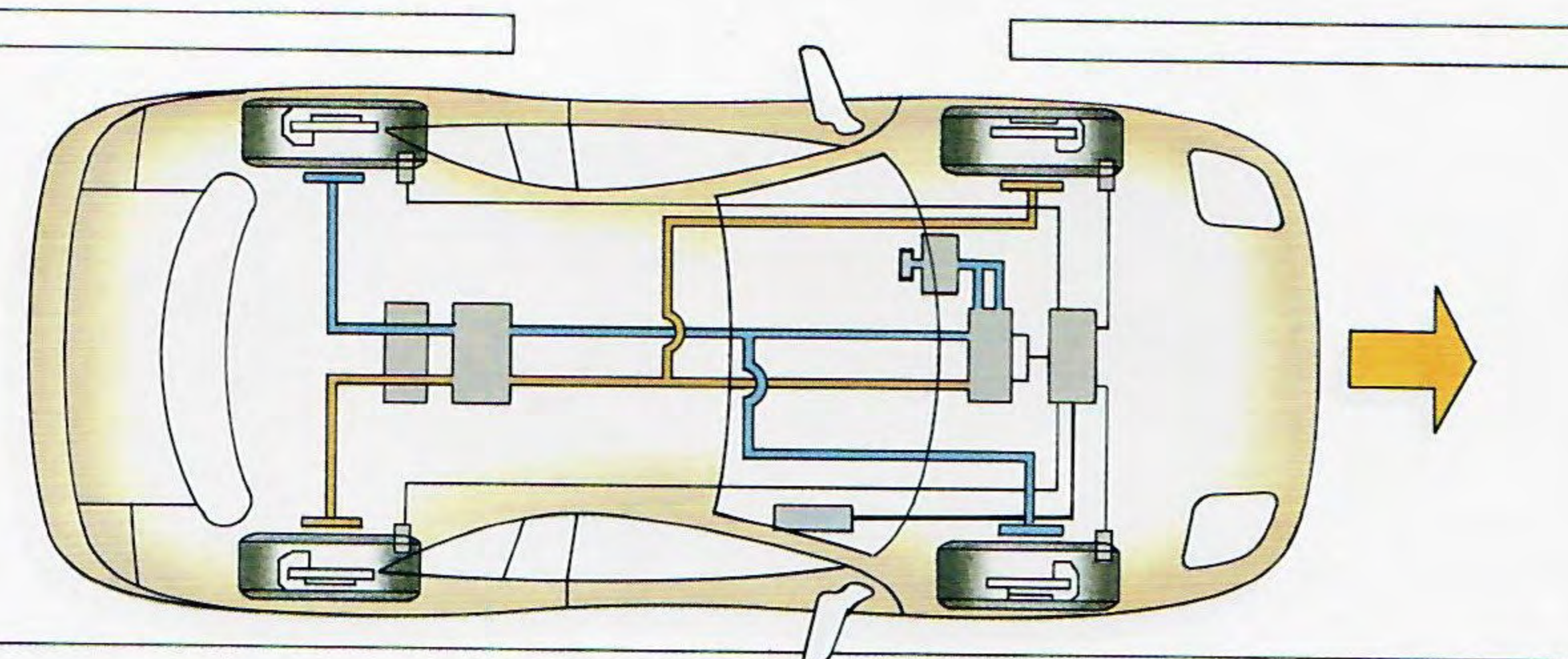
Stealth's Ultimate Sound System with graphic equalizer.

in the even more affordable Stealth ES (shown above).

It sports a clean, less aggressive aero look, featuring integrated fog lights and side skirting. Its four-wheel independent suspension features gas-charged struts and shocks, plus front and rear stabilizer bars.

Stealth

Even the most affordable Stealth (shown at right) features power-assisted four-wheel disc brakes, power-assisted rack-and-pinion steering, a four-



Stealth's Integrated Antilock Brake System (ABS).

Dodge Stealth shown in Mystic Blue.



STEALTH FEATURES AND SPECIFICATIONS

SELECTED STANDARD AND OPTIONAL EQUIPMENT

	Stealth R/T Turbo			
	Stealth R/T			
	Stealth	Stealth ES	Stealth	Stealth ES
Chassis Features				
Alternators				
—90-ampere	S			
—110-ampere		S	S	S
Battery—520-ampere maintenance-free, low-profile with integral test indicator	S	S	S	S
Brakes, Power-Assisted				
—Vented discs, front and rear—high-performance	S	S	S	
—Vented discs, front and rear—heavy-duty				S
—Integrated 4-wheel antilock brake system	P	P	S	S
Exhaust System				
—Stainless steel with dual chrome tips	S	S	S	
—Performance-tuned stainless steel, with dual outlets				S
Fuel Tank—19.8-gallon capacity	S	S	S	S
Horn—Dual-note	S	S	S	S
Steering				
—Power-assisted rack-and-pinion firm-feel	S	S	S	
—Power-assisted 4-wheel steering, hydraulic control (in-phase over 30 mph)				S
Suspension				
—Gas-charged MacPherson front struts with coil springs and compression-type lower control arms, includes performance-type stabilizer bar	S	S	S	S
—Gas-charged rear shocks with coil springs, double wishbone-type dual-link with trailing arms and performance-type stabilizer bar	S ¹	S	S	S
—Electronic variable damping with tour and sport settings				S
—All-wheel-drive system				S

Exterior Features

Air Dam—Front	S	S	S	S
Bumpers—Body color front and rear with soft fascia				
—Stealth and Stealth ES style	S	S		
—Stealth R/T and R/T Turbo style			S	S
Corrosion Protection—Urethane protective coating on all lower body panels and extensive use of galvanized steel	S	S	S	S
Fascias—Soft construction, body color, front and rear	S	S	S	S
Fog Lights—Front fascia-mounted	S	S	S	S
Ground Effects—Aerodynamic lower bodyside sill, body color	S	S	S	S
Headlight System—Pop-up halogen with "optical horn"	S	S	S	S
Hood Support—Gas-charged, spring-type	S	S	S	S
Light, Supplemental Stop				
—Integral to rear spoiler (L.E.D.-type)			S	S
—Underhood light	S	S	S	S
Mirrors				
—Outside, left and convex right power remote control, breakaway-type	S	S	S	S
—Heating element (both)			S	S
Moldings, Identification				
—Bodyside with Pentastar; charcoal	S	S		
—Door handles, body color	S	S	S	S
—Roof				
—Body color	S	S		
—Gloss black			S	S
—C-pillar molding				
—Flush, charcoal	S	S		
—Flying, body color			S	S
—Headlight covers				
—Body color	S	S		
—Black acrylic			S	S
—Side applique (small)			S	
—Side applique (large) with Pentastar, body color			S	S
—Power antenna, left rear quarter area			S	S
Spoiler—Rear, body color			S	S
Tires				
—P205/65R15 all-season Goodyear Eagle GT+4 performance (set of 4)	S			
—P225/55R16 Goodyear Gatorback Unidirectional speed-rated (set of 4)		S	S	
—P245/45ZR17 Goodyear Gatorback Unidirectional speed-rated (set of 4)				S
Wheels				
—15" x 6.0" polycast wheel (set of 4) (WJT) ²	S			
—16" x 8.0" cast aluminum sport wheel with black center cap (set of 4) (WNU)		S	S	
—17" x 8.5" styled aluminum Ultimate wheel with black center cap (set of 4) (WFF) ³				S

	Stealth R/T Turbo			
	Stealth R/T			
	Stealth	Stealth ES	Stealth	Stealth ES
Exterior Features (cont.)				
Wheels (cont.)				
—16" x 4.0" spare steel wheel (compact spare)	S	S	S	S
—Wheel locks, locking nut and key	P	S	S	S
Windshield Wipers—With variable intermittent wipe feature	S	S	S	S
Interior Features				
Air Bag—Driver-side supplemental restraint system	S	S	S	S
Air Conditioning ⁴ —Automatic temperature control			S	S
Brake, Parking—Center console-mounted with soft grip, leather-wrapped	S	S	S	S
Carpeting—Passenger compartment and cargo area, cut pile, color-keyed; includes lower door trim, left and right	S	S	S	S
Chimes—Key-in-ignition, door-ajar, seat belt warning and headlights-on	S	S	S	S
Clock—Digital, integral with radio system	S	S	S	S
Console, Center				
—Includes ash receiver, cigar lighter, coin holder, storage box with cup holder and padded armrest	S	S	S	S
—Accessory power outlet			S	S
—Power lumbar and side wing switch			S	S
—Speed control ON/OFF switch	P	P	S	S
Defroster, Rear Window—Electric, with timer; heavy-duty design	S	S	S	S
Demisters—Side windows (in-door)	S	S	S	S
Door Locks—Power	P	P	S	S
Door Trim—Soft feel with large armrests, fabric insert, carpeted lower, assist grips	S	S	S	S
Fuel Door Release—Inside remote, cable-operated	S	S	S	S
Glass, Tinted—All	S	S	S	S
Glove Box—Locking with squeeze-type latch located close to driver; contains vehicle servicing labels	S	S	S	S
Heater/Defroster—Includes flow-through ventilation with boost fan, bi-level system with side window demisters				
—Manual control	S	S		
—Automatic control			S	S
Indicator Lights				
—Electronically controlled suspension (tour, sport)			S	S
—Cruise control "ON"	P	P	S	S
Instrument Cluster, Electromechanical				
—Includes: analog speedometer (160-mph) ⁵ tachometer, trip odometer, gauges for fuel level, oil pressure, coolant temperature, voltage and turbo boost (if so equipped), warning lights for oil pressure, low fuel, air bag malfunction, turn signals and hazard flashers, charging system, coolant level, seat belts, check engine, brake fluid, parking brake, door-ajar, hatch-ajar, and high beam indicator	S	S	S	S
—Additional warning lights for washer fluid, 4-wheel steering oil level ⁶ antilock brakes, theft security and dual-mode exhaust ⁶	S	S	S	S
Insulation—Premium, includes hood and dash panel insulators, extensive sound damping used throughout cabin area	S	S	S	S
Liftback Release—Inside, remote control	S	S	S	S
Light, Supplemental Stop—Center high-mounted (CHMSL)	S	S		
—Integral to rear window, incandescent				
Lights, Interior				
—Cargo area, cigar lighter, dome with delay timer, dual map reading, footwell (under dash), glove box and ignition switch with time delay	S	S	S	S
—Power window switch	P	P	S	S
—Vanity mirrors			S	S
Mirrors				
—Inside, rearview, day/night	S	S	S	S
—Visor vanity, dual with covers	S	S	S	S
Panel Switches—Headlights up/down, hazard flashers, driving lamps (if equipped), rear window defroster, electronic suspension damping (if equipped), panel rheostat, and power mirrors. In addition, remaining switches include rear wipers/washers and dual-mode muffler (if equipped)	S	S	S	S
Radio Systems				
—AM/FM stereo multiplex with 4 speakers	S	S		
—Ultimate Sound, AM/FM stereo and cassette with auto-reverse, seek-and-scan, graphic equalizer, 6 speakers and a CD jack (portable). Total of 100 watts output. Steering wheel-mounted remote control ⁷			P	S
Seat Belts, Lap/Shoulder Belt—Front, active with electronic tension reliever, color-keyed; rear, active lap, color-keyed	S	S	S	S

	Stealth R/T Turbo			
	Stealth R/T			
	Stealth	Stealth ES	Stealth	Stealth ES
Interior Features (cont.)				
Security System—Protects doors, hatchback, hood and provides visual/audible alarms, ignition interrupt will also occur	0	0	S	S
Speed Control, Electronic—Features column-mounted pod controls and console ON/OFF switch	P	P	S	S
Steering Column—Tilt, energy-absorbing	S	S	S	S
Steering Wheel				
—Leather-wrapped sport-style	S	S	S	S
—With radio controls			S	S
—With speed controls (pod)	P	P	S	S
Sun Visors				
—Dual, covered vanity mirrors	S	S		
—Dual, covered, illuminated vanity mirrors			S	S
Tires				
—T125/90D16 compact spare	S	S	S	
—T135/90D16 compact spare				S
Tray Bins—Spare tire area, includes wheel tool kit and jack	S	S	S	S
Turn Signal Lever—Provides for operation of turn signals, lane change feature and "optical horn" feature	S	S	S	S
Windows—Power-controlled with one-touch-down driver's window	P	P	S	S
Wiper/Washer, Liftgate—Includes fixed intermittent wipe feature	P	P	S	S

S = Standard, 0 = Optional, P = Available only in Customer-Preferred™ Packages.

¹ Gas-charged shocks and rear stabilizer bar not available on Stealth.

² Late availability, 15" cast aluminum road wheel will be substituted at extra cost until polycast wheel becomes available.

³ Pearl White R/T Turbo model requires matching 17" white Ultimate wheel with black center cap.

⁴ There are special engine cooling requirements for field-installed air conditioning. Failure to follow these requirements may invalidate limited warranty. See your dealer for details.

⁵ 180-mph speedometer on R/T Turbo model.

⁶ R/T Turbo model only.

⁷ Steering wheel radio controls are not available on Stealth or Stealth ES models.

STEALTH CUSTOMER-PREFERRED PACKAGESSM AND AVAILABLE OPTIONS

Power Train Availability	Transaxles	Stealth Customer-Preferred SM Package Codes							
		Stealth	Stealth ES	Stealth R/T	Stealth R/T Turbo	Stealth	Stealth ES	Stealth R/T	Stealth R/T Turbo
3.0-liter SOHC 12V V6 MPI ¹	5-speed manual	21A	21B	21C					
	4-speed automatic	22A	22B	22C					
3.0-liter DOHC 24V V6 MPI ¹	5-speed manual				23G	23H	23M	23N	
	4-speed automatic				24G	24H	24M	24N	
3.0-liter DOHC 24V V6 MPI Twin Intercooled Turbo ^{1,2}	5-speed manual							25W	25X

Package Contents

Air Conditioning ³		•	•	•	•				
Carpet Protectors		•	•	•	•				
Door Locks—Power						•			
Radio—AM/FM cassette						•	•	•	
Radio—Ultimate sound (with CD player)									•
Radio—Ultimate sound (with equalizer)								•	
Speed Control—Electronic		•	•	•	•				
Wheels—15" cast Aluminum ⁴		•	•	•	•				
Windows—Power						•			
Wiper/Washer, Rear		•	•	•	•				

Available Options

Air Conditioning ³	0								
Brake System, Antilock and Security Alarm System with Power Door Locks	0	0	0	0	0				
Carpet Protectors	0								
Radio—AM/FM cassette	0								
Seats—Leather-with-vinyl-trim						0	0	0	0
Transaxle—4-speed automatic	0 ⁵	0	0	0	0	0	0	0	

0 = Optional, • = Included.

¹ Premium unleaded fuel is recommended.

² Turbo engine is not recommended for trailer towing and such use may damage engine and invalidate limited warranty.

³ There are special engine cooling requirements for field-installed air conditioning. Failure to follow these requirements may invalidate limited warranty. See your dealer for details.

⁴ Substitute aluminum wheel for standard polycast wheel until polycast wheel becomes available.

Basic Dimensions	2-Door Hatchback
Wheelbase (in.)	97.2
Overall Length (in.)	179.1/180.5 ¹
Overall Width (in.)	72.4
Overall Height (in.)—Includes 4 people plus luggage weight	49.1
Track	
—Front (in.)	61.4
—Rear (in.)	62.2
Head Room	
—Front (in.)	37.1
—Rear (in.)	34.1

Basic Dimensions (cont.)	2-Door Hatchback
Leg Room	
—Front (max) (in.)	44.2
—Rear (min) (in.)	28.5
Hip Room	
—Front (in.)	56.7
—Rear (in.)	46.9
Shoulder Room	
—Front (in.)	55.9
—Rear (in.)	52.0
Cargo Capacity, Cubic Feet (Estimated)	
—Rear seats up	11.1
—Rear seats down	TBD

¹ Second number is for the R/T and R/T Turbo models.

Power Trains

Engine ¹	Transaxle	Stealth	Stealth ES	Stealth R/T	Stealth R/T Turbo
3.0-liter SOHC 12-Valve V6 MPI Horsepower: 164 @ 5,500 rpm Torque (lb-ft): 185 @ 4,000 rpm Bore and Stroke: 3.59" x 2.99" Compression Ratio: 8.9:1	5-speed manual overdrive	S			
	4-speed automatic overdrive	0			
3.0-liter DOHC 24-valve V6 MPI ¹ Horsepower: 222 @ 6,000 rpm Torque (lb-ft): 201 @ 4,500 rpm Bore and Stroke: 3.59" x 2.99" Compression Ratio: 10.0:1	5-speed manual overdrive		S	S	
	4-speed automatic overdrive	0	0		
3.0-liter DOHC 24-valve V6 MPI ³ Horsepower: 300 @ 6,000 rpm Torque (lb-ft): 307 @ 2,500 rpm Bore and Stroke: 3.59" x 2.99" Compression Ratio: 8.0:1	High-capacity 5-speed manual overdrive				S

S = Standard, 0 = Optional.

¹ Emissions controls and testing required at extra cost on all vehicles registered in California. Not available otherwise.

² Premium unleaded fuel is recommended.

³ Turbo engine not recommended for trailer towing and such use may damage engine and invalidate limited warranty. See your dealer for details.

Exterior Colors

Jet Black	Mystic Blue
Firestorm Red	Arctic White ¹
Emerald Green	Pearl White ²
Sandstorm Metallic	

Interior Trim

Standard on Stealth and Stealth ES two-door hatchbacks—Contoured wraparound knit cloth, low-back front bucket seats with reclining seatbacks, adjustable head restraints, passenger and driver entry/egress feature and manual cushion height and lumbar adjustments for driver seat.

Standard on Stealth R/T and Stealth R/T Turbo two-door hatchbacks—Contoured wraparound velour/knit cloth, low-back front bucket seats with reclining seatbacks, adjustable head restraints, passenger and driver entry/egress feature and power cushion height, lumbar and back-wing adjustments for driver seat.

Optional on Stealth and Stealth ES two-door hatchbacks—Contoured wraparound premium leather-with-vinyl-trim low-back front bucket seats with reclining seatbacks, adjustable head restraints, passenger and driver entry/egress feature and manual cushion height and lumbar adjustments for driver seat.

Optional on Stealth R/T and Stealth R/T Turbo two-door hatchbacks—Contoured wraparound premium leather-with-vinyl-trim low-back front bucket seats with reclining seatbacks, adjustable head restraints, passenger and driver entry/egress feature and power cushion height, lumbar and back-wing adjustments for driver seat.

All seats described above are available in Dark Gray, Light Beige and Bright Red. See your dealer for details.



The Advantages of Daytona

“Trading its boy-racer brashness for a more civilized character, (Daytona) has acquired a level of smoothness and refinement that it never had before.”

— Car and Driver

For eight years, Dodge Daytona has epitomized affordable, yet stirring performance. The first Daytonas introduced exciting styling, front-wheel drive and turbocharging... an unbeatable combination at a reasonable price. For 1992, Daytona brings a fresh new high-performance look to the American road. And backs it up with a four-model lineup that features advanced engine technology, available antilock brakes and a modern four-passenger interior that features a standard driver-side air bag, and available Customer-PreferredSM Option Packages, some of which feature **air conditioning at no charge.**

Advantage:Dodge



Daytona IROC R/T.*
The ultimate Daytona features a turbocharged, intercooled, 16-valve, dual overhead cam engine good for 224 horsepower...and plenty of instant attention wherever you drive.



Daytona ES. Its optional 3.0-liter V6, full ground effects, 15-inch cast aluminum road wheels and stunning good looks earn it a turn on anybody's track.



Daytona. A 2.5-liter overhead cam engine, five-speed manual overdrive transaxle and sport suspension produce one affordable driver's car that's destined to make a lasting impression.

The Daytona lineup also features Daytona IROC model not shown here.
*Late availability.



“We judge this to be a world class engine—no excuses, no compromises.”
—Turbo & Hi-tech Performance

The editors were referring to the 2.2-liter, dual overhead cam, intercooled turbo engine you'll find under the hood of the new Daytona IROC R/T.* They could have just as easily been describing the whole car.

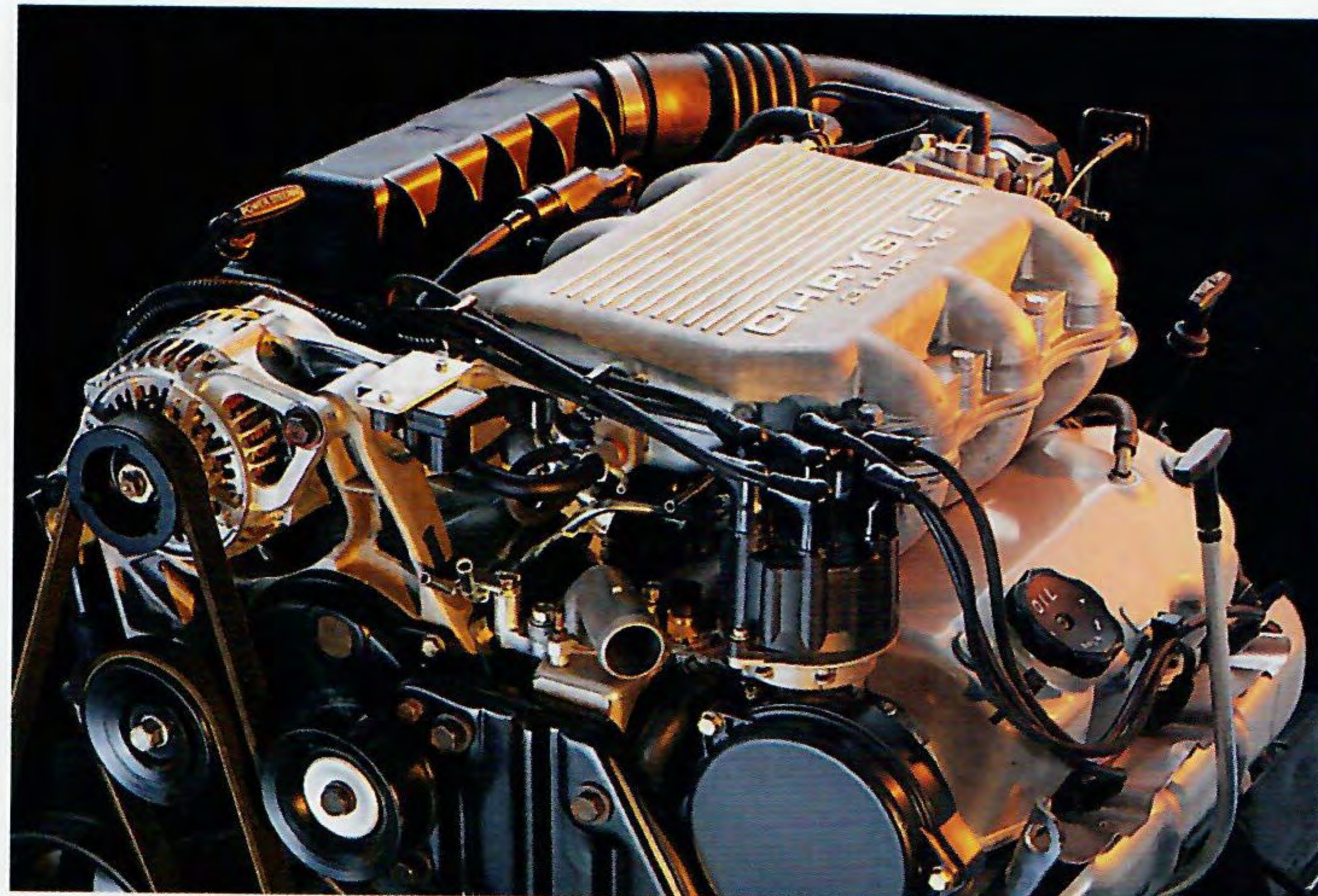
That's because the new IROC R/T is a bold restatement of Dodge's engineering design philosophy. It's based on the belief of constant evolution of proven principles. Since Daytona first burst upon the automotive performance scene in 1984, it's been calling constant attention to itself.



Dodge Daytona ES shown in Electric Blue Metallic Clear Coat.

From a sleek performance-oriented, front-wheel-drive sport coupe back in 1984, Daytona has evolved into... well, an ultra-aerodynamic, high-performance, front-wheel-drive sport coupe.

Six-cylinder power is available on Daytona ES.



Aerodynamic Refinement

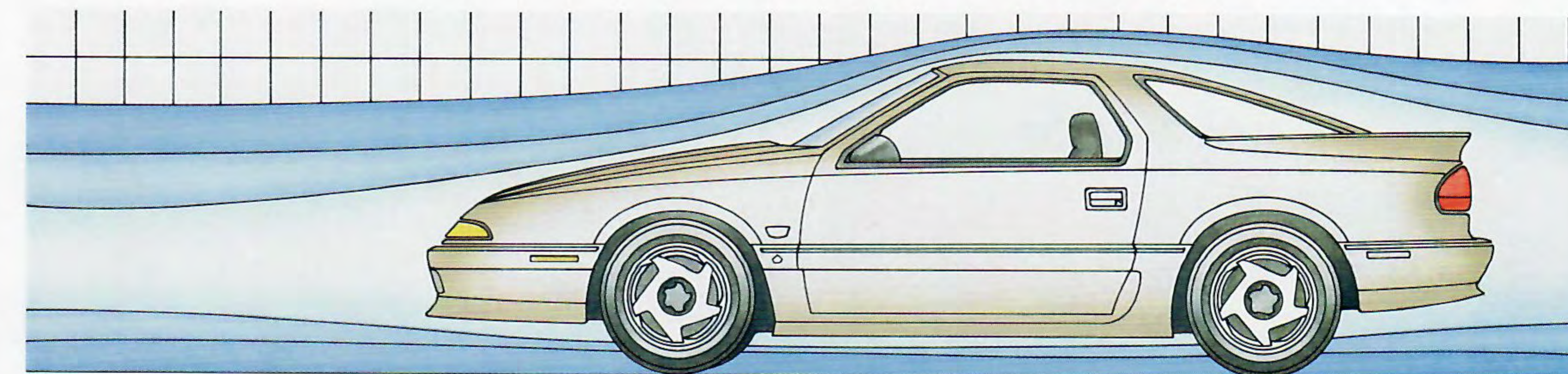
For 1992, the Daytona styling team has transformed Daytona's aggressive ground effects into a sleeker, more rounded form that slips through the air with even greater ease, thanks to countless hours of wind tunnel testing and computer analysis. Not only is this year's Daytona easier on the eye, it's also quieter and more stable on the road because of this improved air flow management.

Sophisticated Power

The air flow's been improved under the hood, too, where the IROC R/T's engine benefits from the better breathing afforded by its Lotus-designed 16-valve head and refined intercooled turbocharging system. The 224 horsepower generated by this engine is capably handled by a close-ratio five-speed with a high-capacity gear-set for greater precision and durability.

Daytona ES

Those preferring their performance in a more traditional format are advised to consider the Daytona ES shown above. It offers the same great new look of the IROC R/T, but with a normally aspirated (non-turbo) 2.5-liter engine under the hood. This electronically fuel-injected power plant features twin balance shafts and comes with a standard close-ratio five-speed manual overdrive



All 1992 Daytonas feature enhanced aerodynamics.

transaxle. Or you may order the optional three-speed automatic. Either way, you'll be treated to power that you will find easy to control. And hard to forget.

*Late availability.

Few cars offer as aesthetically pleasing and practical a four-passenger interior as the Dodge Daytona. From door panels to instrument panel to center console to seating contours, surfaces curve and blend into a handsomely unified shape.

A Design That Works

Not surprisingly, all of Daytona's functions follow this form. Full analog instrumentation (shown at right) is clearly visible beyond the four-spoke sport steering wheel which contains an air bag. All light

switches and wiper/washer controls are conveniently located on the edge of the instrument cluster's hood. Controls for Daytona's optional power windows, power door locks, power mirrors and eight-way power driver's seat are all located

on the driver's door.

A Flexible Floor Plan

The contoured rear seat-backs fold forward individually to offer a variety of seating/load configurations for travelling or running errands. That means Daytona can carry from four

passengers and over 17 cubic feet of cargo to two passengers and 33 cubic feet of cargo.



Daytona IROC's optional leather-trimmed upholstery shown in Medium Light Quartz.





Dodge Daytona shown in Aqua Pearl Coat.

“Year after year, Dodge offers the Daytona, and year after year enthusiasts keep buying it. One possible reason for that phenomenon is that Daytona keeps getting better and better.”
— Road & Track Complete '91 Car Buyer's Guide

Guess what? That tradition continues in 1992. With a sleek new shape that sports a totally new exterior lighting system. Up front are variable focus reflector headlights that are unique to this year's Daytona. They not only allow designers to sculpt more aerodynamic body shapes,

they also produce superior light output...52 percent more “down road” light than the 1991 Daytona lighting system.

On top of it all, there are seven exterior colors available this year. All feature improved Clear Coat finishes that are merely the final touch on the multistage cor-

rosion protection process every Daytona undergoes.

Closer to the road... all but one of Daytona's wheel covers and wheels are new-for-'92 designs. And mounted on those Daytona wheels are either all-season steel-belted radial tires or unidirectional,

speed-rated, performance handling tires. To make the most of Daytona's front-wheel drive, there are gas-charged struts/shocks and an available power-assisted four-wheel disc brake system.

Powerful Choices

When the first front-wheel-drive Daytona appeared on the road in 1984, only

eight-valve, four-cylinder engines were available and the only optional automatic was a three-speed. For '92, you can choose from four engines — including a V6 and a 16-valve intercooled turbo four — and four transaxles — including two five-speed manuals, as well as three- and four-speed

automatics. (See pages 28-29 for specific details.)



Daytona's available Infinity I (top) and Infinity II (bottom) sound systems.

More Options

A look at the ever-lengthening options list shows that now you can order such features as leather upholstery, ABS, Chrysler's incredible Infinity sound systems, a CD player and an antitheft security system. Also, be sure to check out Daytona's many Customer-PreferredSM Packages, some of which feature **air conditioning at no charge.**

One thing hasn't changed though. And that's Dodge's determination to give a lot of value for your money in a sport coupe that's been designed, built and backed to give you a lot of driving pleasure down the road.

Where's Daytona headed in the years ahead? It's a good bet that no matter how much better Daytona continues to get, it will also continue to stay affordable.

DAYTONA FEATURES AND SPECIFICATIONS

SELECTED STANDARD AND OPTIONAL EQUIPMENT

Chassis Features	Daytona IROC R/T			
	Daytona IROC		Daytona ES	
	Daytona	Daytona	Daytona	Daytona
Alternator—90-ampere	S	S	S	S
Battery—Maintenance-free, low-profile with integral test indicator	S	S	S	S
Brakes, Power-Assisted				
—Vented disc front, drum rear	S	S		
—Ultra high-performance, larger diameter vented front and rear discs		P	S	S
Exhaust System—Performance-tuned	O	P	S	S
Front-Wheel Drive	S	S	S	S
Fuel Tank—14-gallon capacity	S	S	S	S
Steering, Power-Assisted				
—Rack-and-pinion, quick-ratio	S	S	S	S
—Firm-feel	P	S	S	S
Suspension				
—Standard sport suspension includes: front coil springs with gas-charged position-sensitive struts, beam rear axle with trailing arms and gas-charged shocks; solid front and tubular rear antisway bars	S	S		
—Maximum performance suspension includes: performance-tuned struts/shocks, spring rates and large solid antisway bars			S	S

Exterior Features	Daytona IROC R/T			
	Daytona IROC		Daytona ES	
	Daytona	Daytona	Daytona	Daytona
Air Dam—Front includes integral fascia-mounted fog lights		S	S	S
Bumpers—Double protection				
Front—Integral with soft fascia. Includes aluminum reinforcement beam				
Rear—Integral with soft fascia. Includes steel reinforcement beam	S	S	S	S
Fog Lights—Integrated to front fascia, plastic lens		S	S	S
Ground Effects—Aerodynamic lower bodyside sill		S	S	S
Headlight System—Aerostyle halogen with time delay	S	S	S	S
Mirrors—Outside, left and convex right manual remote control, aerostyle	S	S	S	S
Moldings				
—Bodyside, 360° wraparound, body color with black accent	S			
—Door window surround, black	S	S	S	S
—Windshield, black	S	S	S	S
—Rear window, black	S	S	S	S
Optical Horn—With flash-to-pass feature	S	S	S	S
Spoiler—Rear liftback and quarter panel extensions	P	S	S	S
Tires				
—P185/70R14 steel-belted all-season radial black sidewall (set of 4)	S			
—P205/60R15 all-season touring radial (set of 4)	P	S		
—P205/55VR16 Unidirectional radial performance handling speed-rated (set of 4)				S
—P205/55ZR16 Unidirectional radial performance handling speed-rated (set of 4)				S
Wheels				
—14" x 5.5" steel wheels with "Centrifuge" wheel covers (set of 4)	S			
—15" x 6.0" "Turbo Star" cast aluminum road wheels (set of 4)	O ¹	S		
—16" X 6.0" cast aluminum "Ninja" wheels (set of 4)			S	S
Windshield Wipers—Deluxe with intermittent wipe and wet arm washers, aerodynamic antilift design wipers	S	S	S	S

Interior Features	Daytona IROC R/T			
	Daytona IROC		Daytona ES	
	Daytona	Daytona	Daytona	Daytona
Accelerator Pedal—Heel-and-toe type (with manual transaxle only)	S	S	S	S
Air Bag—Driver-side supplemental restraint system	S	S	S	S
Air Conditioning ²	P	P	P	S
Brake, Parking—Center console-mounted, hand-operated	S	S	S	S
Chimes—Key-in-ignition, seat belt warning and headlights-on	S	S	S	S
Console, Full-Length, Center—Includes armrest and hidden storage with cassette holder, heater controls, radio, shifter, ash receiver, cigar lighter, parking brake handle, and integral cup holder in ash receiver	S	S	S	S

Interior Features (cont.)	Daytona IROC R/T			
	Daytona IROC		Daytona ES	
	Daytona	Daytona	Daytona	Daytona
Demisters—Side windows (door-mounted)	S	S	S	S
Fuse Box, Easy Access—Mini-type, includes spare fuse holder and fuse removal tool	S	S	S	S
Glass, Tinted—All windows	S	S	S	S
Heater/Defroster—With bi-level ventilation and side window demisters	S	S	S	S
Hood Release—Inside, remote control, cable-operated	S	S	S	S
Instrument Cluster, Electromechanical—Includes: speedometer, tachometer, trip odometer, gauges for fuel level, engine coolant temperature, electrical system voltage, oil pressure, and turbo boost (if so equipped), warning lights for air bag system malfunction, brake system, high beams, check gauges, low oil pressure, seat belts, turn signals, fog lights ON (if so equipped), low fuel and antilock brakes (if so equipped)	S	S	S	S
Insulation—Premium sound (includes silencers in cargo compartment, floor rear wheelhouses and inner hood)		S	S	S
Lights				
—Ash receiver	S	S	S	S
—Dome with liftback and door switches	S	S	S	S
—Ignition switch illumination with time delay	S	S	S	S
Message Center—Warning lights for low washer fluid, door ajar, liftback ajar, alarm set (if so equipped)		S	S	S
Mirrors				
—Inside, rearview, day/night	S	S	S	S
—Vanity, dual visor	S	S	S	S
Panel Switches—Low-travel fingertip switches (cluster hood-mounted) control: intermittent wipers/washers, headlights/parking lights, panel brightness and (if so equipped) fog lights	S	S	S	S
Radios—AM/FM stereo radio with integral clock and 4 speakers	S	S	S	S
Seat Belts, Lap/Shoulder Belt—Active with automatic retractor, color-keyed, front and rear	S	S	S	S
Seat, Rear—Cloth, individual fold-down seatbacks, seatback release accessible from both doors and liftback, carpeted seatbacks	S	S	S	S
Steering Wheel				
—Soft-feel rim, 4-spoke, sport with supplemental air bag	S	S		
—Leather-wrapped 4-spoke, sport with supplemental air bag		S	S	S
Sun Visors—Dual with vanity mirrors	S	S	S	S
Tires—Compact Spare—High-pressure, limited-service	S	S	S	S
Tonneau Security Cover	O	S	S	S

Basic Dimensions ¹	All Daytonas
Wheelbase (in.)	97.2
Overall Length (in.)	179.8
Overall Width (in.)	69.8
Overall Height (in.)	50.3/50.6 ²
Track (in.)	
—Front/Rear	57.5/57.6
Head Room (in.)	
—Front/Rear	37.1/34.3
Leg Room (in.)	
—Front (max)/Rear (min)	42.4/30.1
Hip Room (in.)	
—Front/Rear	53.7/47.9
Shoulder Room (in.)	
—Front/Rear	54.5/53.6
Cargo Capacity, (Estimated) (cu ft)	
—With rear seatbacks up/down	17.1/33.0

¹ Based on 1991 MVMA information.
² Second number is for IROC and IROC R/T.

DAYTONA CUSTOMER-PREFERRED PACKAGESSM AND AVAILABLE OPTIONS

Power Train Availability	Transaxles	Daytona Customer-Preferred SM Package Codes			
		Daytona	Daytona ES	Daytona IROC	Daytona R/T
2.5-liter EFI	5-speed manual	21A	21B	21A	21B
	3-speed automatic	22A	22B	22A	22B
2.5-liter MPI Turbo ¹	5-speed manual				23B
	3-speed automatic				24B
3.0-liter MPI V6 ²	5-speed manual	25B	25A	25B	25A
	4-speed automatic	26B	26A	26B	26B
2.2-liter SMPI 16V Turbo ¹	5-speed H.D. manual				27A 27B

Package Contents	Daytona	Daytona ES	Daytona IROC	Daytona R/T
Air Conditioning ³	•	•	•	•
Defroster—Rear window ⁴	•	•	•	•
Door Locks—Power	•	•	•	•
Floor Mats—Front	•	•	•	•
Liftback Remote Release	•	•	•	•
Light Package ⁵	•	•	•	•
Mirrors—Power dual outside remote, heated	•	•	•	•
Radio—AM/FM stereo cassette	•	•	•	•
Speed Control—Electronic	•	•	•	•
Steering Column—Tilt	•	•	•	•

Available Options	Daytona	Daytona ES	Daytona IROC	Daytona R/T
Antitheft Security System		O	O	O
Brake System—Antilock		O	O	O
Compact Disc Player—Digital ⁶		O	O	O
Console—Overhead (not available with sunroof)		O	O	O
Defroster—Rear window ⁴	O	O	O	O
Emissions—California control and testing ⁷	O	O	O	O
Seat—Power 6-way driver	O	O	O	O
Seat—Power 8-way driver, cloth		O ⁸	O ⁹	O ⁹
Seat—Power 8-way driver, leather		O ⁸	O ⁹	O ⁹
Sound System—Chrysler Infinity I		O	O	O
Sound System—Chrysler Infinity II		O	O	O
Sun Louvers—Rear window ¹⁰		O	O	O
Sunroof—With storage pouch (not available with overhead console)	O	O	O	O
Tonneau Cover	O			
Wheels—15" cast aluminum (set of 4) ¹¹	O	O		
Windows—Power	O	O	O	O
Wiper/Washer—Rear liftback ¹²	O	O	O	O

Available Packages	Daytona	Daytona ES	Daytona IROC	Daytona R/T
Value Package—Power door locks, light package, AM/FM stereo cassette, electronic speed control, tilt steering column	O	O		
Premium Light Package—Illuminated entry system, illuminated visor vanity mirrors (left and right) with flip-up covers			O	O
Sport Package—Rear spoiler, unique bodyside and front and rear accent, stripe and decals, firm-feel power-assisted steering, P205/60R15 Eagle GA all-weather touring tires (set of 4), 15" stamped steel wheels with full sport wheel cover (set of 4)	O	O		
V6 Performance Package—Power-assisted ultra high performance four-wheel disc brakes, 3.0-liter MPI V6 engine, performance handling suspension, leather-wrapped steering wheel, leather-wrapped shifter (manual transaxle only)			O	

O = Optional. • = Available in Customer-PreferredSM Package only.
¹ Turbo engine is not recommended for trailer towing and such use may damage engine and invalidate limited warranty.
² Premium unleaded fuel is recommended.
³ Built by Mitsubishi Motors Corporation.
⁴ There are special engine cooling requirements for field-installed air conditioning. Failure to follow these requirements may invalidate limited warranty. See your dealer for details.
⁵ Required on all passenger vehicles registered in New York state.
⁶ Includes lights for glove box, cargo area, underhood and dual map/reading lights.
⁷ Requires Chrysler Infinity I or Infinity II Sound Systems.
⁸ Required on all vehicles registered in California. Not available otherwise.
⁹ Requires V6 Performance Package and power windows.
¹⁰ Not available with rear window wiper/washer.
¹¹ Requires Sport Package.
¹² Not available with sun louvers.

Interior Trim

Standard on all Daytona models—All-cloth low-back front bucket seats with reclining seatbacks and adjustable head restraints.

Optional on Daytona ES, Daytona IROC, Daytona IROC R/T—Premium cloth low-back front bucket seats with reclining seatbacks, adjustable head restraints and the "Enthusiast" driver's seat, includes power adjustments for six-way seat track, lumbar, back wings and reclining seat back.

Optional on Daytona ES, Daytona IROC, Daytona IROC R/T—Leather-with-vinyl-trim, low-back front bucket seats with reclining seatbacks, adjustable head restraints and the "Enthusiast" driver's seat, includes power adjustments for six-way seat track, lumbar, back wings and reclining seatback.

All seats described above are available in Crimson Red, Dark Gray, Medium/Light Quartz and Dark Gray/Radiant Red. See your dealer for details.



Power Trains

Engine ¹	Transaxle	Daytona	Daytona ES	Daytona IROC	Daytona IROC R/T
2.5-liter SOHC EFI 4-cylinder Horsepower: 100 @ 4,800 rpm Torque (lb-ft): 135 @ 2,800 rpm Bore and Stroke: 3.44" x 4.09" Compression Ratio: 8.9:1	5-speed manual overdrive	S	S		
	3-speed automatic	O	O		
3.0-liter SOHC MPI V6 ² Horsepower: 141 @ 5,000 rpm Torque (lb-ft): 171 @ 2,800 rpm Bore and Stroke: 3.59" x 2.99" Compression Ratio: 8.9:1	5-speed manual overdrive	O	O	S	
	4-speed automatic	O	O	O	
2.5-liter SOHC MPI 4-cyl. Turbo ³ Horsepower: 152 @ 4,800 rpm Torque (lb-ft): 210 @ 2,400 rpm Bore and Stroke: 3.44" x 4.09" Compression Ratio: 7.8:1	5-speed manual overdrive			O	
	3-speed automatic			O	
2.2-liter DOHC SMPI 4-cylinder Intercooled Turbo III ⁴ Horsepower: 224 @ 5,800 rpm Torque (lb-ft): 217 @ 2,800 rpm Bore and Stroke: 3.44" x 3.62" Compression Ratio: 7.8:1	High-capacity 5-speed manual overdrive				S

S = Standard. O = Optional.
¹ Emissions controls and testing required at extra cost on all vehicles registered in California. Not available otherwise.
² Manual and automatic transaxles include a safety ignition interlock.
³ Built by Mitsubishi Motors Corporation.
⁴ Premium unleaded fuel is recommended. Turbocharged engine not recommended for trailer towing and such use may damage engine and invalidate limited warranty.

Color Combinations

Exterior Paint Color	Interior Trim Color	Daytona	Daytona ES	Daytona IROC	Daytona IROC R/T
Indy Red Clear Coat	Crimson Red	X	X	X	
	Dark Gray	X	X	X	X
	Medium/Light Quartz	X	X	X	X
	Dark Gray/Radiant Red		X	X	
Aqua Pearl Coat	Dark Gray	X	X		
	Medium/Light Quartz	X	X		
Electric Blue Metallic Clear Coat ¹	Dark Gray	X	X	X	
	Medium/Light Quartz	X	X	X	
Black Clear Coat	Crimson Red	X	X	X	
	Dark Gray	X	X	X	
	Dark Gray/Radiant Red		X	X	
Raspberry Red Pearl Coat ¹	Dark Gray	X	X		
	Medium/Light Quartz	X	X		
Bright White Clear Coat	Crimson Red	X	X	X	
	Dark Gray	X	X	X	X
	Medium/Light Quartz	X	X	X	X
Jetstream Blue Metallic Clear Coat	Dark Gray	X			
	Medium/Light Quartz	X			

¹ Available at extra cost.

Exterior Colors

Indy Red Clear Coat	Aqua Pearl Coat
Electric Blue Metallic Clear Coat ¹	Black Clear Coat
Raspberry Red Pearl Coat ¹	Bright White Clear Coat
Jetstream Blue Metallic Clear Coat	

¹ Available at extra cost.
 Due to occasional printing irregularities, the colors shown may vary slightly from actual hues. See your Dodge dealer for accurate color chips.
 Clear Coat finish is standard on every 1992 passenger car built by Chrysler Corporation.

The Advantages of Spirit

"Definitely a whole lot of family sedan for the enthusiast who wants to haul a little mail between runs to the A&P."

Sports Car International

When the performance artists at Dodge enlist the fine-tuning expertise of Lotus, you know something special is bound to happen. Spirit R/T is what happened. One part handsome five-passenger sedan. One part state-of-the-art engine technology. Together, they produce one affordable high-performance sport sedan that can leave plenty of high-priced sports cars standing in its dust. For those with slightly more modest performance ambitions, there's the Spirit ES sport sedan. Either way, you'll make things happen...quickly.

Advantage:Dodge



Spirit ES. Its 2.5-liter turbo engine, five-speed manual overdrive transaxle, sport suspension, crisp steering and sure braking will win your heart.



Spirit R/T. A 224-horsepower, dual overhead cam, 16-valve intercooled turbo engine in a five-passenger sport sedan? If you love the concept, you'll love the car.



"This is a car that goes head-to-head with BMW and wins."

—Motor Trend

The limited-production Dodge Spirit R/T wasn't created in a vacuum. It didn't just suddenly appear on a test track one day and proceed to blow the doors off everything in sight. Rather, it was created as a logical extension of the Spirit ES, a 2.5-liter, turbo-

charged, five-passenger sport sedan which first appeared in 1989.

The Dodge Spirit engineering team felt that with a few tweaks here and there, a truly world-beating, high-performance sedan would emerge. It looks as though they were right.

Over 100 Horsepower Per Liter

Spirit R/T's main attraction is definitely the turbocharged 2.2-liter 16-valve engine that lies under its hood (shown below). The impressive 224 horsepower, coupled with a torque rating of 217 pound-feet make it the highest specific output (per unit of displacement)

Chrysler Corporation production engine ever.

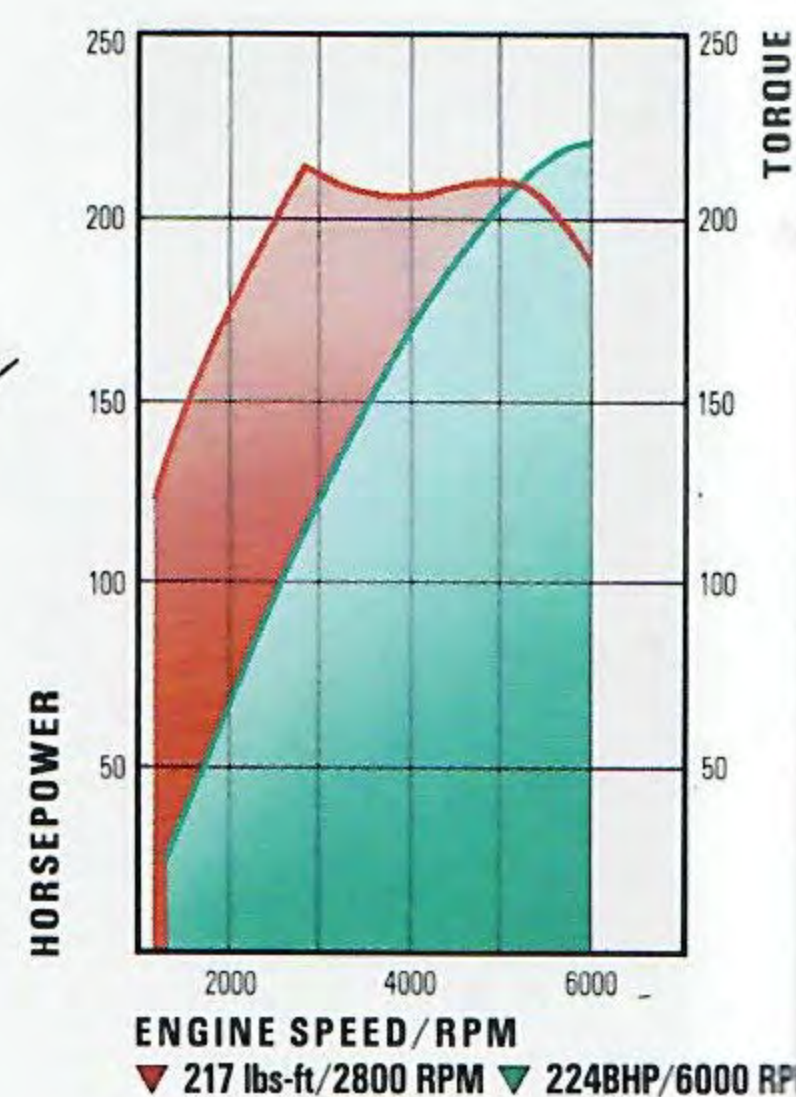
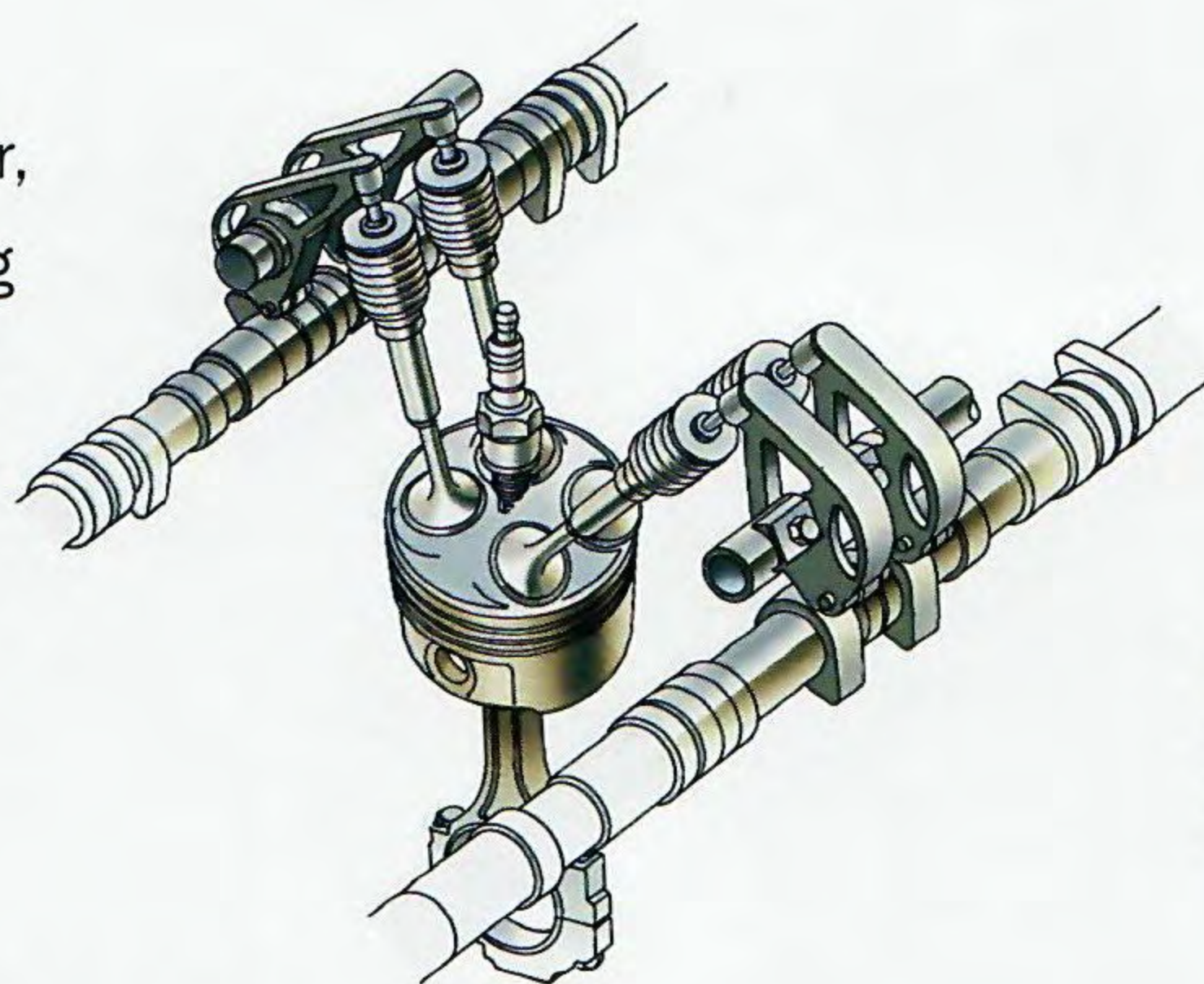
Exceptional Engine Technology

Lotus worked with R/T team engineers to develop a new one-piece cast aluminum cylinder head with equal-length double overhead cams and applied their expertise to the pistons as well as the intake and exhaust manifolds.

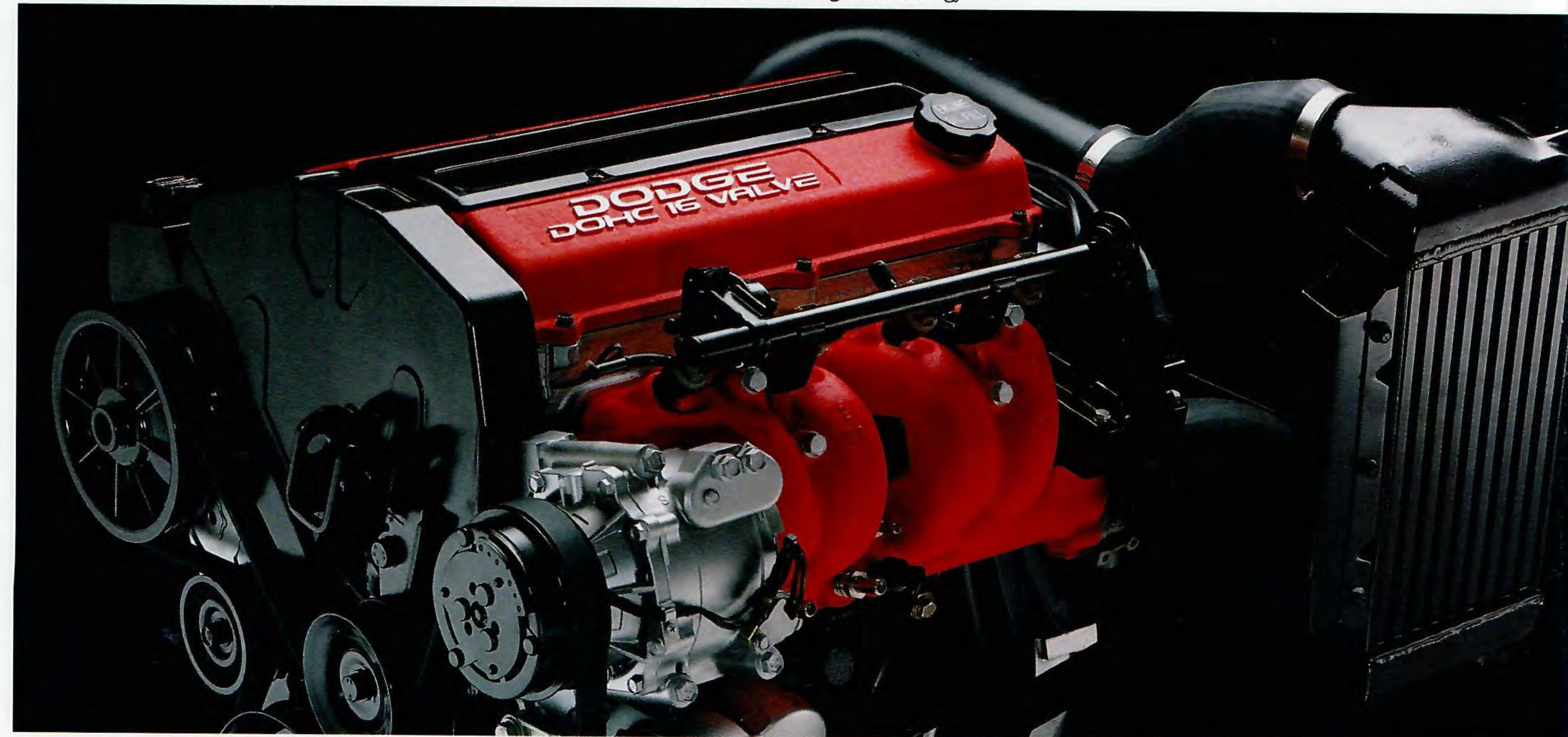
A closer examination of the engine reveals some of

the other secrets of its success. The cylinder head features crossflow porting. Individual intake runners feed each cylinder which has two 1.4-inch diameter intake valves and two 1.5-inch diameter exhaust valves set at a 29.5-degree angle to allow for a compact head size.

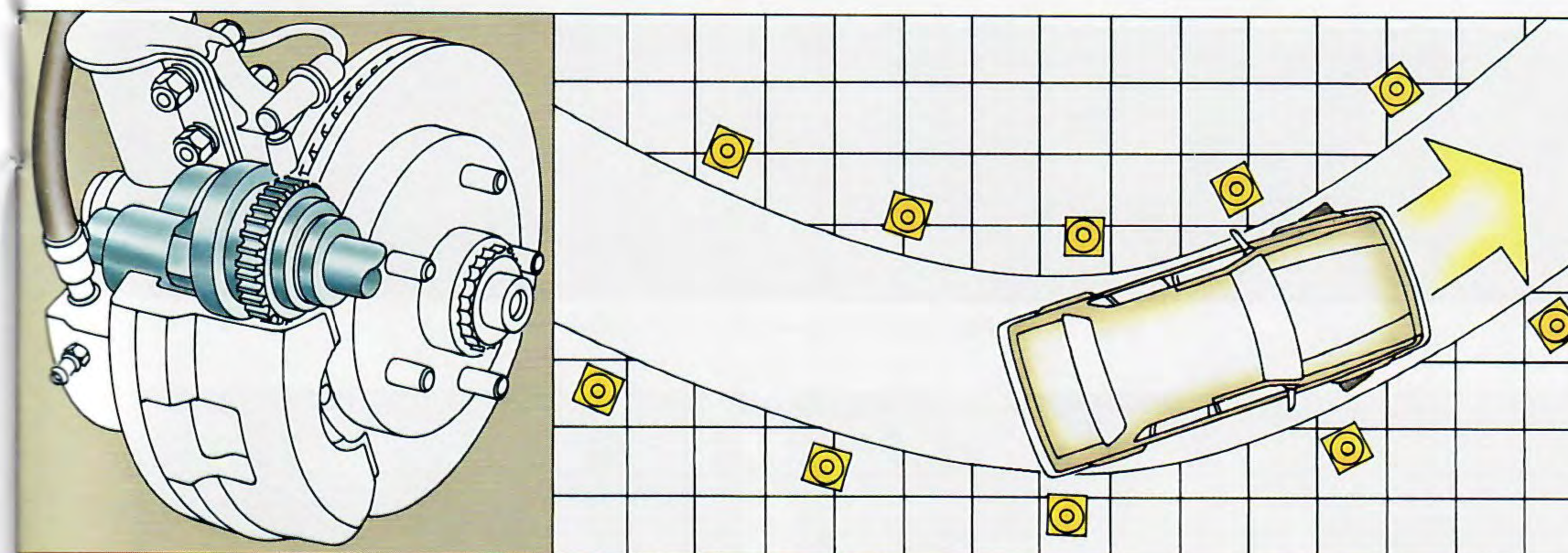
The valves are operated by the camshafts via shaft-mounted, low-friction roller rocker arms which help



Spirit R/T's engine features four valves per cylinder. Far right: The impressive results of this engine technology.



Dodge Spirit R/T shown in Indy Red Clear Coat.



special all-season, speed-rated performance tires.

Outstanding Braking

To handle deceleration, there's a power-assisted four-wheel disc brake setup which can be further upgraded with the addition of an optional antilock system that allows a driver to retain full steering control (even during so-called "panic stops") by automatically pumping the brakes to prevent wheel lockup (shown above, left).

maintain a low engine profile. The pistons are made of lightweight forged aluminum and were designed specifically for the high operating speeds of this engine.

There's a shallow pent-roof combustion chamber with just enough room for the valves and a central spark plug. Fuel delivery is

via high-flow injectors located in the intake manifold, just above the ports. The injectors are controlled sequentially by the engine control computer. A distributorless direct ignition system provides all the spark that's needed while

an intercooled turbocharger delivers the needed performance boost on demand.

To make the most of the considerable power generated by this engine, Spirit R/T has been outfitted with a high-performance, close-ratio, five-speed manual overdrive transaxle, a uniquely tuned performance handling suspension and



Dodge Spirit ES shown in Bright White Clear Coat.

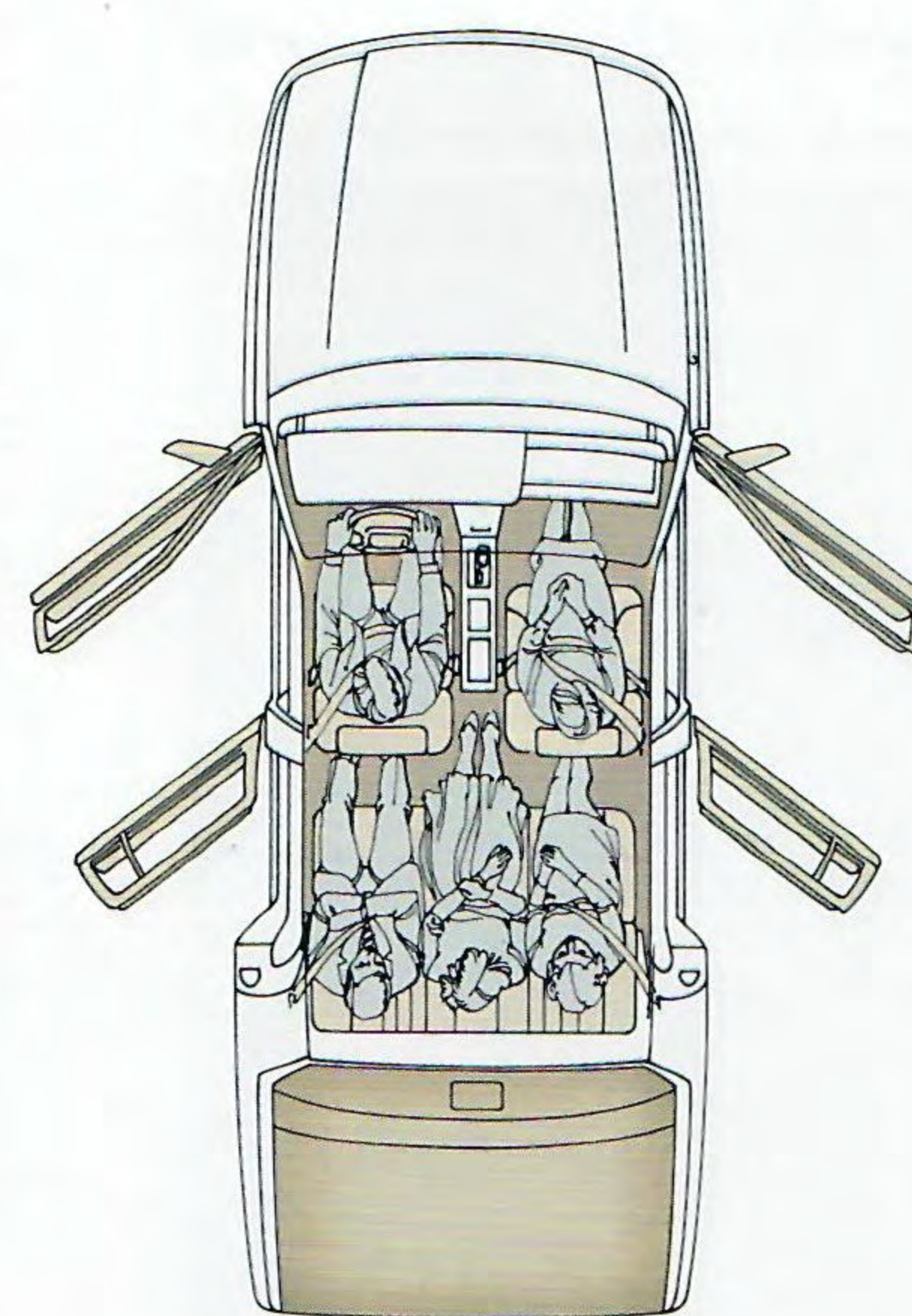


a center console which features a folding armrest, a covered storage bin, cassette storage and cup holders.

At the center of R/T's and ES' instrument panel is a message center and mini traveler trip computer. The message center alerts the driver to low windshield washer fluid, an ajar door or deck lid, and a burned-out headlight, taillight or stoplight. The five-function trip computer provides the driver with

Among the options available on both R/T and ES are power door locks, power windows, a six-way power driver's seat, the Visophone® (shown above) and Chrysler's incredible Infinity sound systems (Infinity II shown below) that put another kind of performance at the Spirit R/T and ES drivers' finger tips.

Many of Spirit's options are offered in several option packages for extra savings. See pages 36-37 for details.



Quite obviously, apart from engines, Spirit R/T and Spirit ES share many common virtues. Among these are similar suspension, steering and braking systems, 15-inch cast aluminum road wheels and a very handsome and practical five-passenger interior (shown at left).

For the driver, there's a leather-wrapped steering wheel that also contains an air bag, as well as controls for the standard electronic speed control.

Full Analog Instrumentation

Beyond the steering wheel (which is mounted on a tilt column for added convenience), there's full analog instrumentation that includes a large, easy-to-read speedometer and tachometer with ancillary gauges for oil pressure, engine coolant temperature, voltmeter and fuel level, plus a trip odometer (ES shown near right).

Controls for headlights, intermittent windshield wipers, rear window

defroster, AM/FM stereo cassette sound system and heater/ventilation system (air conditioning is standard on R/T) are all easy to reach from the contoured driver's seat which also features a four-position manual lumbar support.

Exceptional Seating

The R/T's front sport seats (shown far right) feature extra bolstering for high-performance driving, while the rear seat of both R/T and ES features a 55/45 split folding design which allows



for added cargo-carrying flexibility with direct access to Spirit's already roomy 14.4-cubic foot trunk.

Comfort and Convenience

All outboard seating positions (including the driver's) are equipped with comfortable, easy-to-use Unibelt three-point restraints. Extra convenience is provided by



SPiRiT FEATURES AND SPECIFICATIONS

SELECTED STANDARD AND OPTIONAL EQUIPMENT

	Spirit R/T	
	Spirit ES	
Chassis Features		
Alternator—90-ampere	S	S
Battery—Maintenance-free with integral test indicator, 500 cold cranking amperes, minimum	S	S
Brakes—Power-assisted, dual-diagonal, 4-wheel disc	S	S
Electronic Ignition, Voltage Regulator and Fuel Injection	S	S
Fuel Tank—16 gallons	S	S
Horn—Dual-note	S	S
Steering—Power-assisted, rack-and-pinion, fast-ratio (16:1), precision-feel	S	S
Suspension—Sport handling —Front: high-control, gas-charged, position-sensitive struts and solid antisway bar —Rear: beam axle with trailing arms, high-control gas-charged shock absorbers, and tubular antisway bar	S	
Suspension—Performance handling Same as sport handling suspension except with unique spring, shock and strut tuning		S
Exterior Features		
Antenna—Stainless steel, damage-resistant	S	S
Bracket—Front license plate (standard where required)	NC	NC
Bumpers—Energy-absorbing, color-keyed with protective rub strips	S	S
Corrosion Protection—Extensive use of galvanized steel	S	S
Deck Lid Spoiler—Color-keyed		S
Fog Lights—Integral in front fascia	S	S
Fuel Filler Cap—Tethered	S	S
Headlights, Halogen—Aerostyle (2)	S	S
Hood—Counterbalanced	S	S
Lights—Underhood	S	S
Mirrors —Outside dual remote control, black —Outside dual power remote, heated	S	P
Moldings —Bumper protective rub strip extensions, body color —Upper door frame and belt, bright/black —Windshield and rear window, black —Bodyside, medium width, body color with bright insert ("Turbo" silk screen included on ES model with turbo engine, "DOHC MULTIVALVE/INTERCOOLED" on R/T with turbo engine) —Sill, front and rear fascia ground effects, body color	S	S
Stripes, Paint—Bodyside and deck lid, 2-color (monotone on ES)	S	
Tires —P205/60R15 steel-belted radial all-season performance tread design black sidewall low rolling resistance (set of 4) —P205/60VR15 performance, all-season, speed-rated low rolling resistance (set of 4)	S	S
Urethane Protective Coating—Lower body	S	S
Wheels—15" Cast aluminum road wheels (set of 4) ¹	S	S
Windshield Wipers—Deluxe with variable intermittent wipe feature	S	S
Interior Features		
Acoustical Package—Premium, body sound	S	S
Air Bag—Supplemental driver-side restraint system	S	S
Air Conditioning ² —Manual	P	S
Armrests—Center console-mounted (Includes dual cup holders for rear passengers)	S	S
Ash Receivers—1 front, 2 rear	S	S
Brake, Parking—Foot pedal-operated	S	S
Carpeting, Passenger Compartment—Color-keyed	S	S
Chimes, Warning—Fasten seat belt, key-in-ignition and headlights-on	S	S
Cigar Lighter	S	S
Clock, Digital—Integral with all radios	S	S
Coat Hooks—Rear (2)	S	S
Console, Full Floor—With covered bin, cup holders, coin holder and cassette storage	S	S

	Spirit R/T	
	Spirit ES	
Interior Features (cont.)		
Deck Lid Release—Remote control cable-operated with defeat mechanism located in the trunk	S	S
Defroster—Rear window, electric	S	S
Door Release Handles, Interior—Easy-open with plunger-type lock/unlock system, color-keyed on light color vehicles, black on all others	S	S
Floor Mats—Carpeted front and rear	S	S
Footrest—Driver's right foot		S
Glass, Tinted—All	S	S
Glove Box, Lockable—Includes storage for cassette tapes	S	S
Grab Handles—3, mounted above passenger doors	S	S
Heater/Defroster—With bi-level ventilation and side window demisters	S	S
Hood Release, Inside	S	S
Instrument Cluster—Electric analog 120-mph speedometer (150-mph on Spirit R/T) with secondary metric scale; electromechanical tachometer, odometer, trip odometer, and gauges for oil pressure, engine coolant temperature, voltmeter and fuel level; warning lights for fasten seat belts, parking brake on or brake system failure, air bag system, check engine, low fuel and check gauges and antilock brakes (if so equipped)	S	S
Light, Supplemental, Stop—Center high-mounted	S	S
Lights —Ash receiver —Cigar lighter —Dome —Glove box —Map light —Ignition switch with time delay —Trunk	S	S
Locks, Rear Door—Inside, childproof	S	S
Message Center, Graphic—Includes warning lights for low windshield washer fluid, trunk lid ajar, door ajar, headlight out, taillight out and stoplight out	S	S
Mini Traveler Trip Computer—Includes trip odometer, distance to empty, average and instant miles-per-gallon, elapsed time and U.S. or metric	S	S
Mirrors —Rearview, inside day/night —Visor vanity, with driver-side sliding cover	S	S
Multifunction Control Lever—Mounted on the steering column, includes controls for turn signals, lane change feature, windshield wipers/washers, headlight dimmer and day/night flash-to-pass feature, pulse-wipe feature	S	S
Radios—AM/FM stereo with cassette player and 4 speakers	S	S
Seat Belts, Color-Keyed—Unibelt with automatic retractor and cinching latchplate on front and rear outboard seats, lap belts at all other positions	S	S
Seats —Front—See interior seat trim description —Rear—Cloth with vinyl trim split folding seatback, 55/45 with lockable latches	S	S
Speed Control—Electronic (Controls located on steering wheel)	S	S
Steering Column—Tilt	S	S
Steering Wheel—Luxury, leather-wrapped 2-spoke (includes speed control switches)	S	S
Tires —Spare, compact limited-service, T125/70D14 —Spare, compact limited-service, T125/90R15	S	S
Trunk Floor and Sidewall Carpet Dress-Up	S	S

S = Standard. NC = No-cost option. P = Available only in Customer-PreferredSM Packages.
¹ Color-keyed to white exterior, otherwise argent.
² There are special engine cooling requirements for field-installed air conditioning. Failure to follow these requirements may invalidate limited warranty. See your dealer for details.

SPiRiT ES AND R/T CUSTOMER-PREFERREDSM PACKAGES AND AVAILABLE UPGRADE OPTIONS AND PACKAGES

Power Train Availability	Engines:	Spirit Customer-Preferred SM Package Group Codes	
		ES	R/T
2.5-liter MPI Turbo ¹	5-speed manual overdrive	23X	23U
3.0-liter SMPI V6 ²	4-speed electronic automatic		28U
2.2-liter SMPI 16V Turbo ¹	High-capacity 5-speed manual overdrive		29S

Package Contents			
Air Conditioning ²		•	
Door Locks—Power, with ignition interlock		•	
Mirrors—Dual power heated		•	
Windows—Power		•	

Available Options			
Brakes—Power 4-wheel antilock disc		0	0
Emissions—California control and testing ³		0	0
Seat—Power 6-way driver's seat		0	0
Sound System—Chrysler Infinity I		0	0
Sound System—Chrysler Infinity II		0	0

Available Packages			
Interior Convenience Package		0	0
Overhead Console—Includes —Front and rear reading lights —Compass and outside temperature readouts —Garage door opener and sunglasses storage			
Interior Illumination Package —Illumination entry —Dual illuminated visor vanity mirrors			0
Power Equipment Package —Windows, power —Door locks, power			0

0 = Optional. * = Available in Customer-PreferredSM Package only.
¹ Turbo engine is not recommended for trailer towing and such use may damage engine and invalidate limited warranty. Premium unleaded fuel is recommended. See your dealer for details.
² There are special engine cooling requirements for field-installed air conditioning. Failure to follow these requirements may invalidate limited warranty. See your dealer for details.
³ Required on all vehicles registered in California. Not available otherwise.

Basic Dimensions	Spirit ES and R/T
Wheelbase (in.)	103.5
Overall Length (in.)	181.2
Overall Width (in.)	68.1
Overall Height (in.)	53.5
Track —Front (in.) —Rear (in.)	57.6 57.2
Head Room —Front (in.) —Rear (in.)	38.4 37.9
Leg Room —Front (max) (in.) —Rear (min) (in.)	41.9 38.3
Hip Room —Front (in.) —Rear (in.)	51.7 52.0
Shoulder Room —Front (in.) —Rear (in.)	54.3 55.0
Cargo Capacity, Cubic Feet (Estimated)	14.4

Power Trains ¹	Transaxle	Spirit ES	Spirit R/T
2.5-liter SOHC MPI 4-cylinder Turbo ² Horsepower: Man. 150 @ 5,000 rpm Auto. 152 @ 4,800 rpm Torque (lb-ft): Man. 180 @ 2,000 rpm Auto. 210 @ 2,400 rpm Bore and Stroke: 3.44" x 4.09" Compression Ratio: 7.8:1	5-speed manual overdrive	S	
3.0-liter SOHC MPI V6 Horsepower: 141 @ 5,000 rpm Torque (lb-ft): 171 @ 2,800 rpm Bore and Stroke: 3.59" x 2.99" Compression Ratio: 8.9:1	3-speed automatic	0	
2.2-liter DOHC SMPI 4-cylinder ² Intercooled Turbo III Horsepower: 224 @ 5,800 rpm Torque (lb-ft): 217 @ 2,800 rpm Bore and Stroke: 3.44" x 3.62" Compression Ratio: 7.8:1	Electronic 4-speed automatic	0	S

¹ Emissions controls and testing required at extra cost on all vehicles registered in California. Not available otherwise.
² Premium unleaded fuel is recommended. Turbo engine not recommended for trailer towing and such use may damage engine and invalidate limited warranty. See your dealer for details.

Interior Trim

Standard on Spirit ES and R/T four-door sedans—Premium cloth with vinyl trim low-back front bucket seats with folding center armrest, reclining seatbacks, adjustable head restraints and manual lumbar adjustments for driver seat. Available only in Medium Quartz.



Color Combinations

Exterior Paint Color	Interior Color	Spirit ES	Spirit R/T
Indy Red Clear Coat	Medium Quartz	X	X
Black Clear Coat	Medium Quartz	X	
Bright Silver Metallic Clear Coat ¹	Medium Quartz	X	X
Bright White Clear Coat	Medium Quartz	X	X

¹ Available at extra cost.

Exterior Colors



¹ Available at extra cost.

Due to occasional printing irregularities, the colors shown may vary slightly from actual hues. See your Dodge dealer for accurate color chips.

Clear Coat finish is standard on every 1992 passenger car built by Chrysler Corporation.

The Advantages of Shadow

"This (Shadow) represents Dodge high performance at an entry level price tag."

—Motor Trend

That's what Shadow ES has always been about... exceptionally affordable performance. Dodge realizes that not all enthusiasts have a bundle of money to spend. So Shadow ES was designed and equipped to meet the performance demands of drivers who want to turn up the heat without turning out their pockets. That's why all Shadow ES models come with a 2.5-liter fuel-injected engine, a five-speed manual overdrive transaxle, power-assisted rack-and-pinion steering and a special sport-tuned suspension. Add the optional 2.5-liter multipoint fuel-injected turbo engine and you have *Motor Trend's* top Econosport of 1990 and 1991.

Advantage:Dodge



Shadow ES Convertible.
The affordable performance drop-top that features room for four, a driver-side air bag, folding rear quarter windows, power windows, a four-speaker AM/FM stereo and all the fresh air you can breathe.



Shadow ES Liftback.
The practicality of front-wheel drive, five-passenger seating, folding rear seats and a maximum cargo capacity of 30.8 cubic feet—plus in driver-side air bag-equipped two-door and four-door models.



“One of our drivers even likened the (Shadow) convertible to (an affordable) Saab 900 Turbo Cabrio.”
—AutoWeek

At first glance, that might seem to be the overstatement of the year...until you

consider the facts. Both are turbocharged, four-cylinder, front-wheel-drive convertibles. Both seat four and offer a standard five-speed manual overdrive transaxle as well as an optional three-speed automatic. There are

remarkable similarities in weight, wheelbase, width, height and track.*

The really big difference? The Saab costs more than twice as much as a Shadow ES Turbo Convertible.

That may come as a big

surprise to anyone who closely examines any Shadow ES Convertible's interior. Included among its many standard features is a luxury steering wheel with driver-side air bag. Contoured sport seating with

strobe cloth upholstery and a manually adjustable driver-side lumbar support. Full analog instrumentation. Power windows. And an AM/FM stereo radio with four speakers. And just think of the options you can add

with the thousands of dollars you'll save!

* Comparisons based on 1991 models.



Every Shadow ES features driver-oriented instrumentation and controls.

Shadow ES Convertible's well-appointed interior shown in Medium Quartz Cloth.



"The idea is wonderful: exotic performance... available to those who otherwise couldn't afford it."
—Car and Driver Buyers Guide

Affordable performance... that's what Dodge is all about. And Dodge Shadow ES is the most affordable performer in the 1992 Dodge performance lineup. Whether or not you opt for the turbocharged version of the 2.5-liter engine, you'll be getting an impressive array of performance hardware for not a lot of money.

Agile

To begin with, there's power-assisted rack-and-pinion steering which will help you make the most of Shadow's tight turning circle. The vented front disc/self-adjusting rear drum brake system is power-assisted, too. And the sport-tuned suspension features gas-charged front struts and rear shock absorbers, plus front and rear stabilizer bars, so you can have plenty of fun when the road starts throwing you all curves.

Powerful

Shadow ES comes with a standard 100-horsepower 2.5-liter single overhead cam EFI engine that features twin counter-rotating balance



shafts to smooth out any possible engine vibration, making this economical four-cylinder feel more like a six.

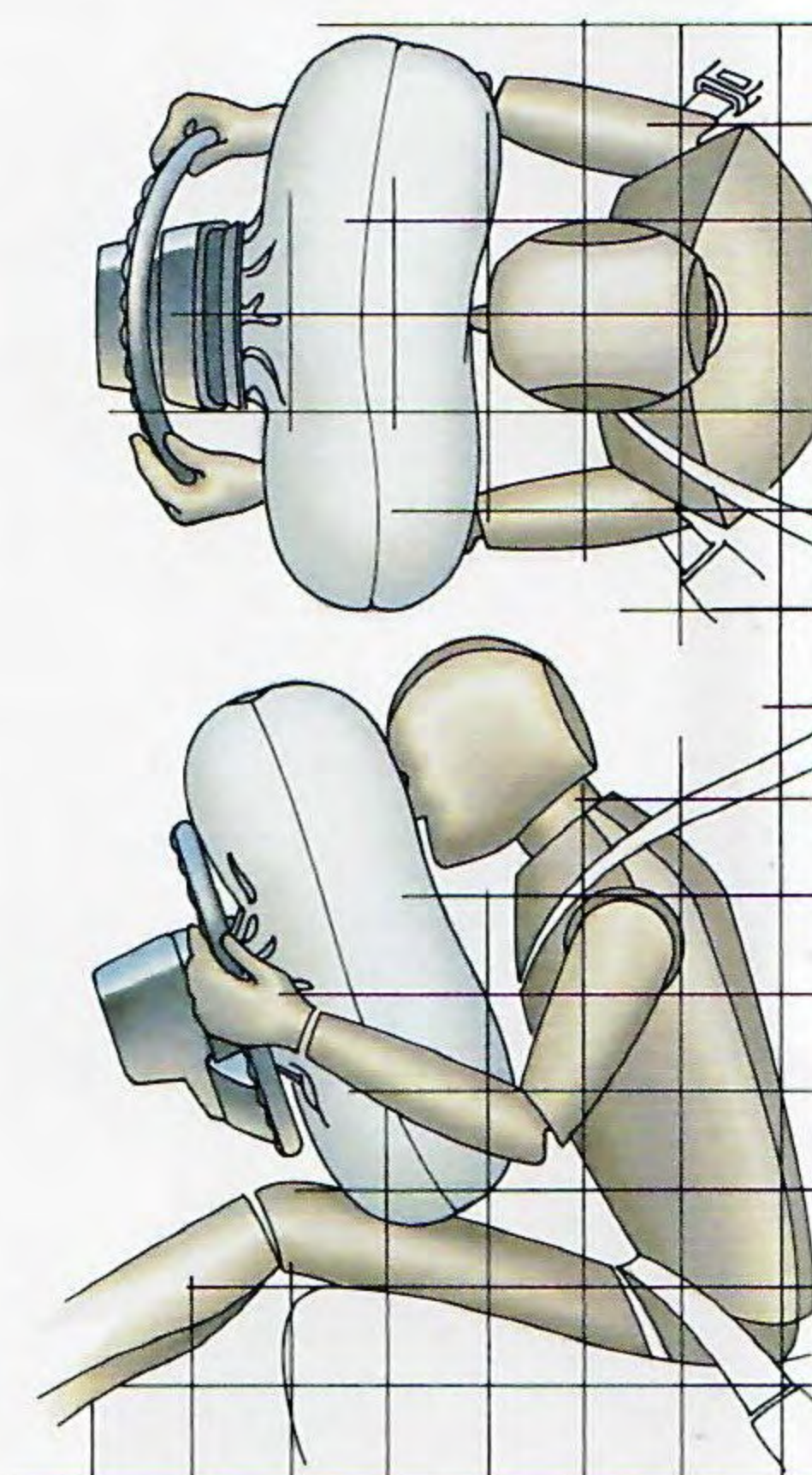
Order the optional 2.5-liter turbocharged engine with sequential multipoint electronic fuel injection

(shown at left) and you get 148 horsepower.

That power will be distributed to the road by way of Shadow's sure-gripping front-wheel drive and the ES model's standard P195/60R15 steel-belted radial all-season performance handling tires that are mounted on new 15-inch cast aluminum road wheels.

Stylish

Outside, Shadow ES models feature integrated front fog lights, black dual remote



Dodge Shadow ES two-door liftback shown in Indy Red Clear Coat.

outside mirrors, a power bulge hood and special Shadow ES graphics. Shadow ES liftback models feature a one-piece rear deck spoiler.

Safe

Inside, there's a driver-side air bag and Unibelt three-point restraints at all outboard seating positions (both shown at left). The instrumentation includes a large, easy-to-read 125-mph speedometer and 7,000-rpm tachometer, plus auxiliary gauges for fuel level, engine coolant temperature and

electrical system voltage.

Order the turbo engine and you get a turbo boost gauge as well.

Well-Equipped

There's a full center console that includes the floor-mounted shifter, a storage bin, dual slide-out cup holders, a cubby bin and a center armrest with extra storage space under it. Order power windows, power door locks or power mirrors and the controls are all mounted on the center console for easy access by both the driver



and front seat passenger. See the following pages for a listing of the many option packages available for Shadow ES, including the Infinity I Sound System shown above.

SHADOW ES FEATURES AND SPECIFICATIONS

SELECTED STANDARD AND OPTIONAL EQUIPMENT

	Shadow ES Convertible	
	Shadow ES 2-/4-Door	
Chassis Features		
Brakes—Power-assisted front vented disc/rear drum	S	S
Exhaust System—"Quiet" tuned	S	S
Steering—Power-assisted rack-and-pinion, firm-feel	S	S
Suspension—Sport: front and rear antisway bars, gas-charged front dual-path Iso-Struts and rear gas-charged shock absorbers	S	S
Exterior Features		
Air Dam	S	S
Boot Cover—Convertible top, color-keyed		S
Bumpers—Color-keyed soft fascias, front and rear, with protective rub strip	S	S
Corrosion Protection—Extensive use of galvanized steel	S	S
Door Locks—Child protection on rear doors (4-door only)	S	S
Fog Lights	S	S
Fuel Tank—14 gallons	S	S
Fuel Filler Cap—Tethered	S	S
Headlights, Halogen—Aerostyle (2)	S	S
Hood—Inside release, counterbalanced	S	S
Lights—Front and rear side marker	S	S
Mirrors—Outside, dual remote	S	S
Spoiler—Deck lid-mounted, 1-piece	S	S
Tires—P195/60HR15 steel-belted radial black sidewall all-season performance	S	S
Vinyl Top—Convertible only		S
Wheels—15" cast aluminum	S	S
Windshield Wipers—Deluxe; variable intermittent wipe feature	S	S
Interior Features		
Air Bag—Driver-side	S	S
Carpeting—Passenger and cargo areas, charcoal	S	S
Chimes—Warning for key-in-ignition, headlights-on and seat belts	S	S
Clock—Digital integral with all radios	S	S
Console—Full center, includes forward storage bin, cup holders, cubby bin and center armrest with storage bin	S	S
Fuse Box—Easy access; includes spare fuse holder and fuse removal tool	S	S
Heater/Defroster—Bi-level ventilation and side window demisters	S	S
Instrumentation		
—Electromechanical, includes 125-mph speedometer, trip odometer, voltmeter, engine coolant gauge, fuel level gauge and warning/indicator lights	S	S
—Tachometer	S	S
Liftback—Remote release	S	S
Mirror—Interior, day/night rearview	S	S
Mirrors—Interior, left and right visor vanity	S	S
Multifunction Control Lever	S	S
Pedals—Heel-and-toe type accelerator and brake	S	S
Radio—AM/FM stereo with 4 speakers	S	S
Restraint Anchors—For child safety seat	S	S
Seat Belts—3-point Unibelts for front and rear outboard seat positions	S	S
Seating		
—Front, reclining buckets	S	S
—Rear, 50/50 split folding seatback	S	S
Shelf Panel—Rear removeable	S	S
Windows, Power	O	S

S = Standard. O = Optional.

SHADOW CUSTOMER-PREFERREDSM PACKAGES AND AVAILABLE OPTIONS

Power Train Availability	Transaxles	Shadow Customer-Preferred SM Package Codes			
		Shadow ES 2-/4-door	23H	23G	23H
2.5-Liter EFI	5-speed manual	23G	23H	23G	23H
	3-speed automatic	24G	24H	24G	24H
2.5-Liter MPI Turbo ¹	5-speed manual		25H		25H
	3-speed automatic		26H		26H
Package Contents					
Air Conditioning with Tinted Glass ²			•		•
Defroster—Rear window, electric ³			•		
Floor Mats			•		•
Radio—AM/FM stereo with premium cassette tape player			•		•
Speaker System—Infinity I			•		•
Speed Control—Electronic			•		•
Steering Column—Tilt			•		•
Available Options					
Air Conditioning with Tinted Glass ²		O		O	
Console—Overhead ⁴		O	O		
Defroster—Rear window, electric ³		O			
Door Locks—Power		O	O	O	O
Floor Mats		O		O	
Mirrors—Dual outside power remote ⁵		O	O	O	O
Radio—AM/FM stereo w/cassette tape player		O		O	
Radio—AM/FM stereo w/premium cassette player		O		O	
Seat—Power driver ⁶		O	O	O	O
Speaker System—Infinity I ⁷			O		O
Speed Control—Electronic ⁸		O		O	
Steering Column—Tilt		O		O	
Sunroof—Manual flip-up type, removable		O	O		
Tire—Spare conventional		O	O		
Windows—Power ⁹		O	O		

O = Optional. • = Available in Customer-PreferredSM Package only.

Available in Customer-PreferredSM Packages only. Includes engine dress-up, performance-tuned exhaust system, turbo boost/vacuum gauge, "Turbo" decals, message center. Premium unleaded fuel is recommended.

² There are special engine cooling requirements for field-installed air conditioning. Failure to follow these requirements may invalidate limited warranty. See your dealer for details.

³ Required on all passenger vehicles registered in New York state.

Not available with sunroof. Requires power door locks.

Requires power mirrors, power windows and power door locks.

⁷ Requires premium cassette tape player and power door locks.

⁸ Requires tilt steering column.

⁹ Requires power mirrors and power door locks.

Basic Dimensions ¹	Shadow ES 2-/4-door	Shadow ES Convertible
Wheelbase (in.)	97.2	97.2
Overall Length (in.)	171.7	171.7
Overall Width (in.)	67.3	67.3
Overall Height (in.)	53.0	53.0
Track		
—Front (in.)	57.6	57.6
—Rear (in.)	57.2	57.2
Head Room		
—Front (in.)	38.3	39.9
—Rear (in.)	37.4	38.7
Leg Room		
—Front (max) (in.)	41.5	41.5
—Rear (min) (in.)	34.0	31.5
Hip Room		
—Front (2-/4-door) (in.)	52.8/55.4	52.9
—Rear (2-/4-door) (in.)	55.0/44.7	42.8
Shoulder Room		
—Front (2-/4-door) (in.)	55.0/54.7	54.5
—Rear (2-/4-door) (in.)	53.9/54.5	42.6
Cargo Capacity		
—Rear seatback up (cu ft)	13.2	8.7
—Rear seatback down (cu ft)	30.8	

¹ Based on 1991 MVMA information.

Power Trains¹

Engine	Transaxle	Shadow ES Shadow ES Convertible
2.5-liter EFI 4-cylinder Horsepower: 100 @ 4,800 rpm Torque (lb-ft): 135 @ 2,800 rpm Bore and Stroke: 3.44" x 4.09" Compression Ratio: 8.9:1	5-speed manual	S
	3-speed automatic	O
2.5-liter SOHC EFI 4-cylinder Turbo ² Horsepower: Man.—148 @ 4,400 rpm Auto.—152 @ 4,800 rpm Torque (lb-ft): Man.—185 @ 3,600 rpm Auto.—211 @ 2,800 rpm Bore and Stroke: 3.44" x 4.09" Compression Ratio: 7.8:1	5-speed manual	O
	3-speed automatic	O

S = Standard. O = Optional.

¹ Emissions controls and testing required at extra cost on all vehicles registered in California. Not available otherwise.

² Available in Turbo Engine Customer-PreferredSM Package only. Premium unleaded fuel recommended. Turbo engine not recommended for trailer towing and such use may damage engine and invalidate limited warranty. See your dealer for details.

Interior Trim

Standard on Shadow ES two-/four-door and Shadow ES Convertible. Premium cloth with vinyl trim performance low-back front bucket seats with reclining seatbacks, adjustable head restraints and driver's adjustable lumbar support. Available in Medium Quartz only.



Color Combinations

Exterior Paint Color ¹	Interior Trim Color	Convertible Top Color	Shadow ES 2-/4-door	Shadow ES Convertible
Black Cherry Pearl Coat	Med. Quartz	Med. Quartz or Black		X
Black Clear Coat	Med. Quartz	Med. Quartz or Black	X	X
Bright White Clear Coat	Med. Quartz	Med. Quartz, Black or White	X	X
Indy Red Clear Coat	Med. Quartz	Med. Quartz or Black	X	X
Aqua Pearl Coat	Med. Quartz	Med. Quartz or Black	X	X
Electric Blue Metallic Clear Coat ²	Med. Quartz	Med. Quartz or Black	X	X

¹ All ES models feature a standard two-tone paint treatment with Medium Quartz Clear Coat, lower bodyside panels and sills. A monochromatic look is available only when Bright White Clear Coat is ordered on two-door and convertible models. See your dealer for details.

² Available at extra cost.

Exterior Colors

	
Black Cherry Pearl Coat	Indy Red Clear Coat
	
Black Clear Coat	Aqua Pearl Coat
	
Bright White Clear Coat	Electric Blue Metallic Clear Coat ¹
	
	Medium Quartz Clear Coat ²

¹ Available at extra cost.

² All ES models feature a standard two-tone paint treatment with Medium Quartz Clear Coat, lower bodyside panels and sills. A monochromatic look is available only when Bright White Clear Coat is ordered on two-door and convertible models. See your dealer for details.

Due to occasional printing irregularities, the colors shown may vary slightly from actual hues. See your Dodge dealer for accurate color chips.

Clear Coat finish is standard on every 1992 passenger car built by Chrysler Corporation.

CONSIDER LEASING

Many of today's new car prospects are wisely considering leasing as an alternative to buying. Leasing a new Dodge usually involves a small security deposit and a first-month's lease payment. Monthly payments are usually less than financing a new car purchase. Ask your dealer for details.



CHRYSLER CREDIT FINANCING

Chrysler Credit offers a variety of finance programs that can help make your new Dodge even more affordable. These flexible finance and lease programs can be tailored to suit your budget and your lifestyle. They include Advantage: Gold Key Lease, Gold Key

Plus, College Graduate Plans, Retail Financing, and other special payment plans. Ask your salesperson for details.

CHRYSLER PURCHASE ASSISTANCE PROGRAM FOR THE PHYSICALLY CHALLENGED

Cash reimbursements of up to \$500 are available for qualified adaptive driving devices on 1992 Chrysler Corporation cars and trucks. For further information, contact your dealer or the PHYSICALLY CHALLENGED RESOURCE CENTER at 1-800-255-9877.



There's only one sure way to keep your Dodge performance car performing at its optimum mile after mile. Just make sure it's serviced regularly at your nearby Dodge dealer. That's where you'll find first-rate mechanics specially trained in the maintenance and repair of your new Stealth, Daytona, Spirit or Shadow. They've been provided with all the sophisticated equipment today's performance cars demand. And they have immediate access to a complete stock of genuine Mopar replacement parts that can make the difference between trouble-free driving and the unacceptable alternative.

CHRYSLER CELLULAR SYSTEMS

OKI® Telecom manufactures, services and is the warrantor of the Visorphone,¹ Mobile phone and Portable phone products that are available on selected Chrysler Corporation vehicles. See your dealer for a copy of the limited warranties. Restrictions apply.

CHRYSLER CORPORATION LIMITED WARRANTY PROTECTION

Every Chrysler Corporation vehicle comes with the protection of a Chrysler Corporation Limited Warranty. See your dealer for details.

MOPAR parts are engineered by Chrysler Corporation for use in your new Dodge. When replacement is necessary, be sure to specify MOPAR parts. Used by professional mechanics all over the world.

All product illustrations and specifications are based on current information at the time of publication approval. Although descriptions are believed correct, accuracy cannot be guaranteed. Chrysler Corporation reserves the right to make changes from time to time, without notice or obligation, in prices, specifications, colors and materials, and to change or discontinue models. See your dealer for the latest information.

Form No. 74-383-9206 8/91 (600M)
Litho in U.S.A.

Certain models, packages and options are subjected to specific restrictions, requirements or late availability. See your dealer for the latest ordering information.

¹ Visorphone® is a registered trademark of Cartell Inc.

Buckle up for safety.





OFFICIAL SPONSOR
OF THE 1992 U.S.
OLYMPIC TEAM



"'36 USC 380"



The New Site For Car Brochures
DEZO'S GARAGE