

CHRYSLER

2001



P T C R U I S E R

3 0 0 M

L H S

C O N C O R D E

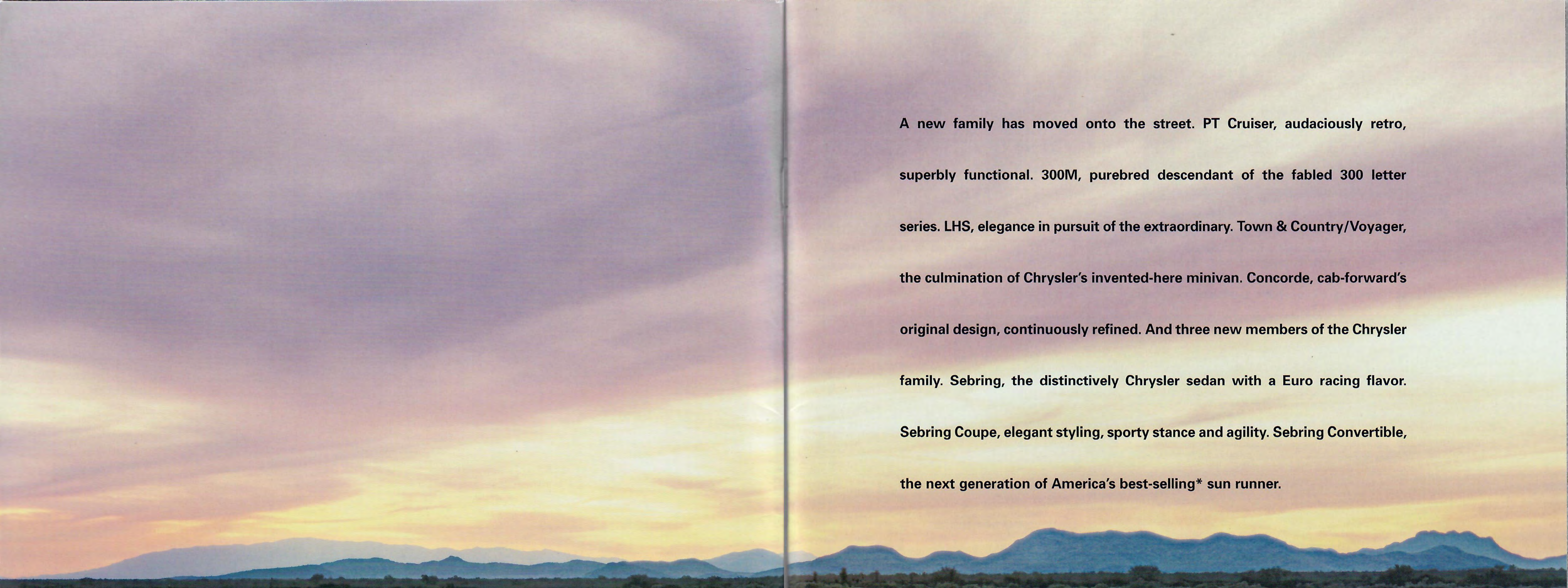
S E B R I N G

S E B R I N G C O U P E

S E B R I N G C O N V E R T I B L E

T O W N & C O U N T R Y

V O Y A G E R



A new family has moved onto the street. PT Cruiser, audaciously retro, superbly functional. 300M, purebred descendant of the fabled 300 letter series. LHS, elegance in pursuit of the extraordinary. Town & Country/Voyager, the culmination of Chrysler's invented-here minivan. Concorde, cab-forward's original design, continuously refined. And three new members of the Chrysler family. Sebring, the distinctively Chrysler sedan with a Euro racing flavor. Sebring Coupe, elegant styling, sporty stance and agility. Sebring Convertible, the next generation of America's best-selling* sun runner.



From left: PT Cruiser with Luxury Touring Group • 300M • LHS • Town & Country Limited • Concorde LXi • Sebring LXi • Sebring LXi Coupe • Sebring LXi Convertible

*Based on total registrations from 1996 through 1999.

PT CRUISER



From the realm of a designer's dream, the first sketch of PT Cruiser (above) was rendered. And only one aim was established in bringing it from conception to reality: preserve the essence, but maximize the utility. Chrysler's renowned "heritage approach to design," a technique that contemporizes classic forms, influenced PT Cruiser's engaging looks and very American style. Still, the commitment to produce a roomy, utilitarian and remarkably versatile car was never overlooked. The proof of the PT Cruiser concept is the reality of the car itself ... PT Cruiser satisfies a car lover's need for individuality, with the flexibility that meets everyday needs. It's an entirely new car for a whole new century.

The 2001 Chrysler PT Cruiser has a personality unlike anything on the road today. It's cool, and spacious. It's everything you've always wanted. The PT is for "Personal Transportation" because it reflects PT Cruiser's flexibility and versatility for each individual owner. And it's all wrapped in a distinctly classic American design. Engineered with highly advanced technologies, a 2.4-liter DOHC 16-valve I-4 engine provides the power. PT Cruiser. This revolutionary new Chrysler is ready to meet the Personal Transportation needs of the new millennium.

PT CRUISER



Styling that defines an automobile's character is exemplified by PT Cruiser's flared fenders and flush-mounted ellipse headlamps.



A winged medallion badge is prominently featured to highlight Chrysler's renowned heritage.



At all four corners, PT Cruiser displays available 16-inch chrome wheels.



PT Cruiser borrows design cues from classic American automobiles and interprets them with a contemporary dose of American fun and individualism.



PT CRUISER



The supportive, chair-like driver and front-passenger seats are available with front outboard supplemental side air bags* that provide enhanced head and thorax protection in the event of a side impact.

Filled with people or packages (or a combination of both), PT Cruiser's 120.2 cubic feet of interior space is up to the task. The multitude of seating and cargo configurations makes it just right. All passengers, including the three in back, will find PT Cruiser's comforts accommodating. Short or tall, your passengers will be pleasantly surprised with the amount of rear-seat head and leg room. They will also appreciate the three shoulder belts in the backseat. Stylish leather-trimmed seats are available, cradling you and your occupants in comfort and richness.



PT Cruiser Limited Edition leather-trimmed seating in Dark Taupe

Properly secure all cargo.



Wide-open space: your new frontier to be explored. The 65/35 split rear seat can be folded, folded and tumbled forward, or removed. For added efficiency, the available front-passenger seatback can be folded completely forward for use as a driver's tabletop or to provide enough additional space to carry an eight-foot ladder with the liftgate closed.



100-pound maximum load with rear shelf panel in position shown.

Flexibility is attained with PT Cruiser's standard rear multi-position shelf panel. Use it for: tailgate parties (or any party); a security screen; a flat floor extension; a carpet protector; or as a retainer with hooks for grocery bags. The possibilities are endless.

Inside, there's 120.2 cubic feet of spaciousness. And even with five people, there's still 19 cubic feet* of cargo room.



Properly secure all cargo.



The interior is as distinctive as the exterior: Easy entry and exit. Chrome-finish door handles. Limousine-like head room (40.4 inches). Seats to accommodate the short and the tall...comfortably.

*Always use seat belts. Children 12 and under should always be in a backseat correctly using an infant or child restraint system, or a seat belt that is right for their age and size.

*Behind rear seat with standard rear shelf panel removed. Properly secure all cargo.

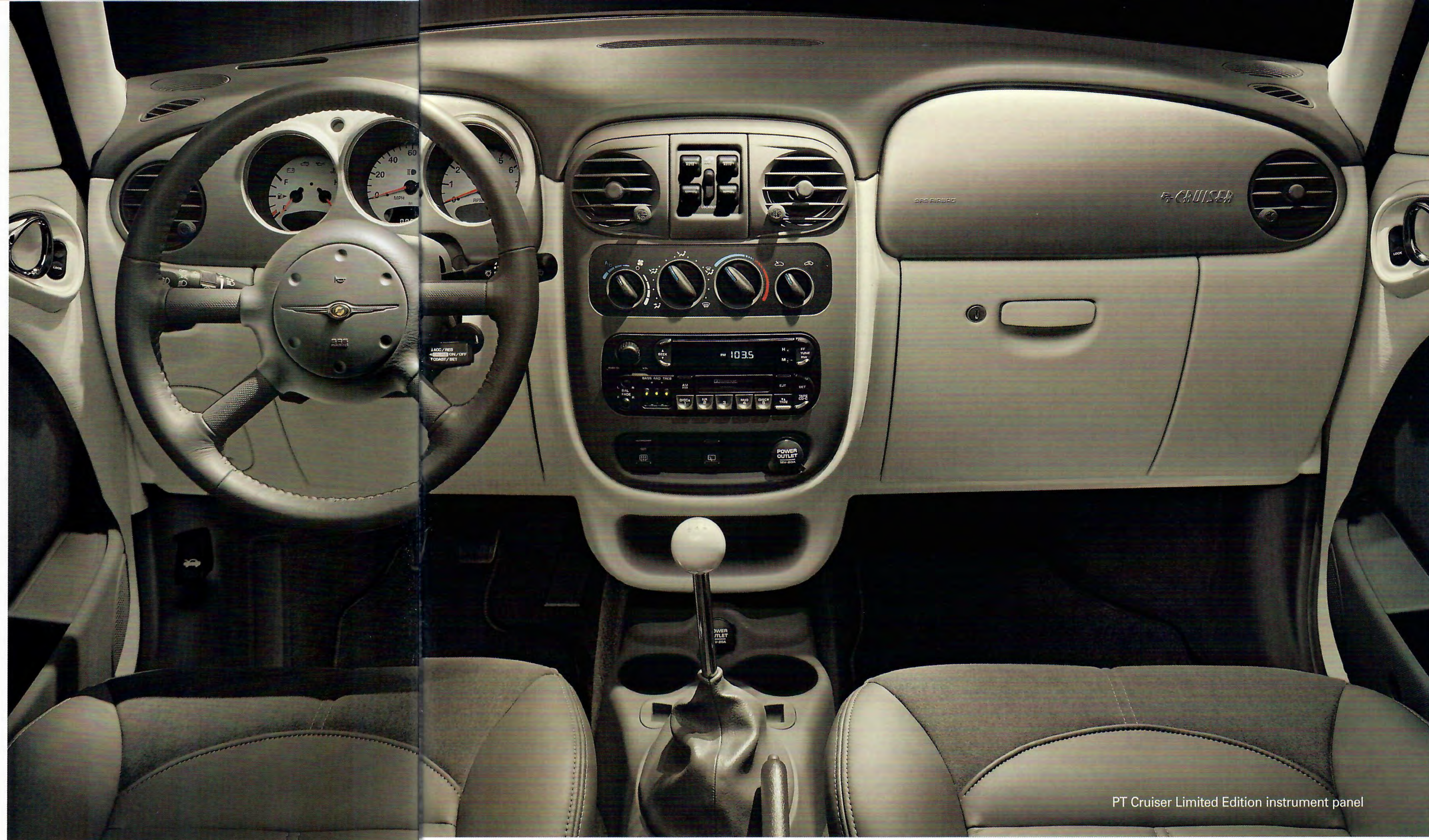
PT CRUISER

SELECT STANDARD FEATURES

- 2.4-liter DOHC I-4 engine
- 5-speed manual transaxle
- Next Generation driver and front-passenger air bags*
- Independent front suspension
- Twist-beam axle rear suspension with Watt's linkage
- 65/35 split-rear seat can be folded, folded and tumbled or removed
- Air conditioning
- AM/FM stereo radio with cassette player and six premium speakers
- Power windows
- Height-adjustable steering column
- Multiposition rear shelf panel
- Floor console with four cup holders
- Rear window wiper/washer
- Rear window defroster
- Clutch-Starter Interlock
- User-ready child seat lower anchor and top tether anchor — LATCH system

*Certified to the Federal Regulations that allow less forceful front air bags. Always use seat belts. Children 12 and under should always be in a backseat correctly using an infant or child restraint system, or a seat belt that is right for their age and size.

The aesthetics of PT Cruiser's interior fulfill the promise of its exterior design, while adding a whole new level of personal function for active people. The browless instrument panel with its symmetrical, color-coordinated panels, salutes an earlier era. Stylish chrome rings encircle the gauges and the circular motif is continued in the climate control outlets. The unique four-spoke steering wheel features a circular hub to accommodate the horn as well as the driver's air bag.* The climate control knobs, power window switches and sound system controls are within easy reach in the center stack.



PT Cruiser Limited Edition instrument panel

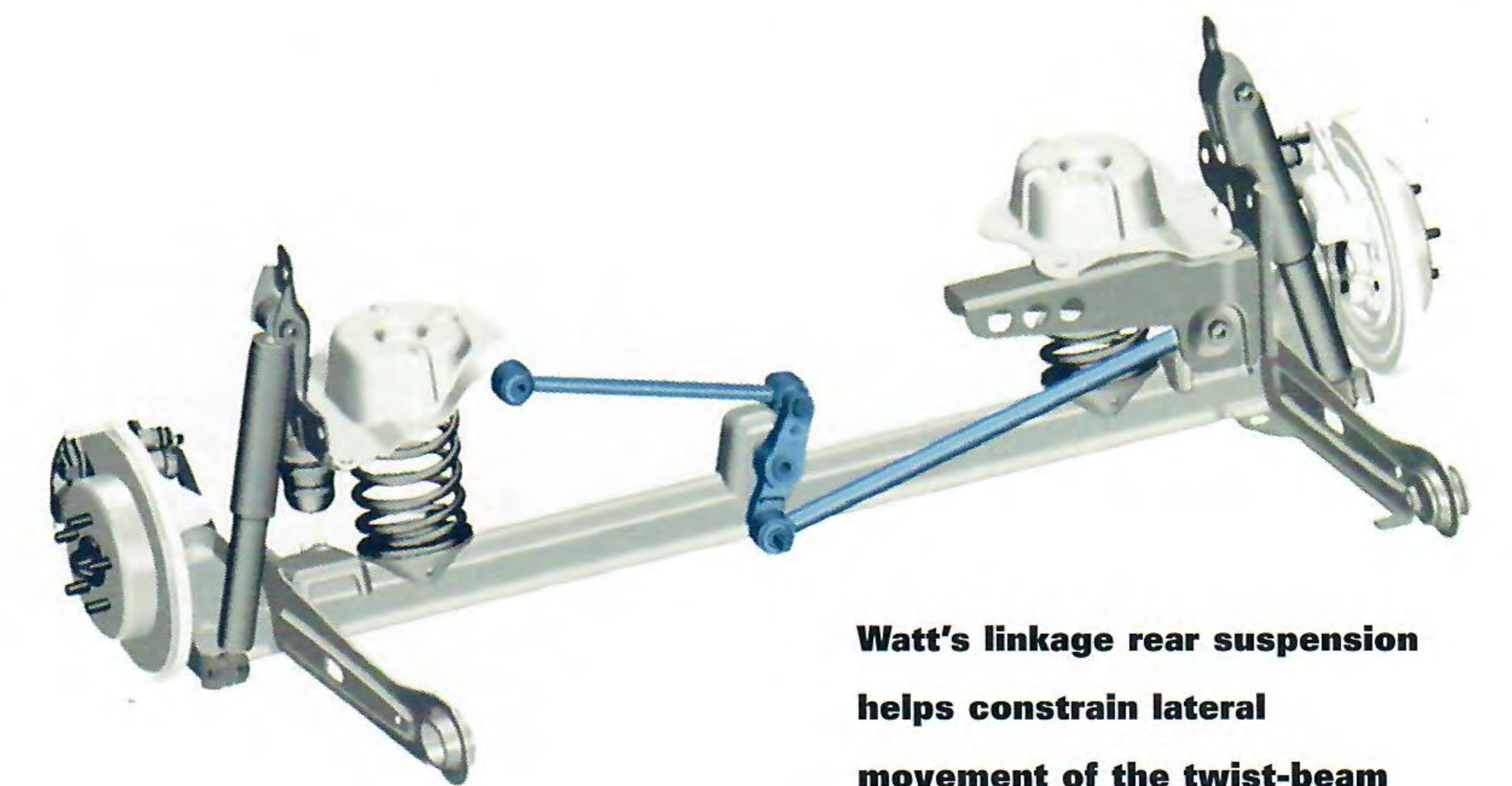
PT Cruiser's standard five-speed manual transaxle is controlled by a shift knob atop a chrome shaft. A cable shift mechanism provides short throws through all five gears.



PT Cruiser in Aquamarine Metallic

Striking from any angle, the PT Cruiser is available with a variety of packages and options to suit your budget.

Available four-wheel disc antilock brakes with Low-Speed Traction Control improve your ability to steer in hard braking situations and get you going again when starting off on loose or slippery surfaces.



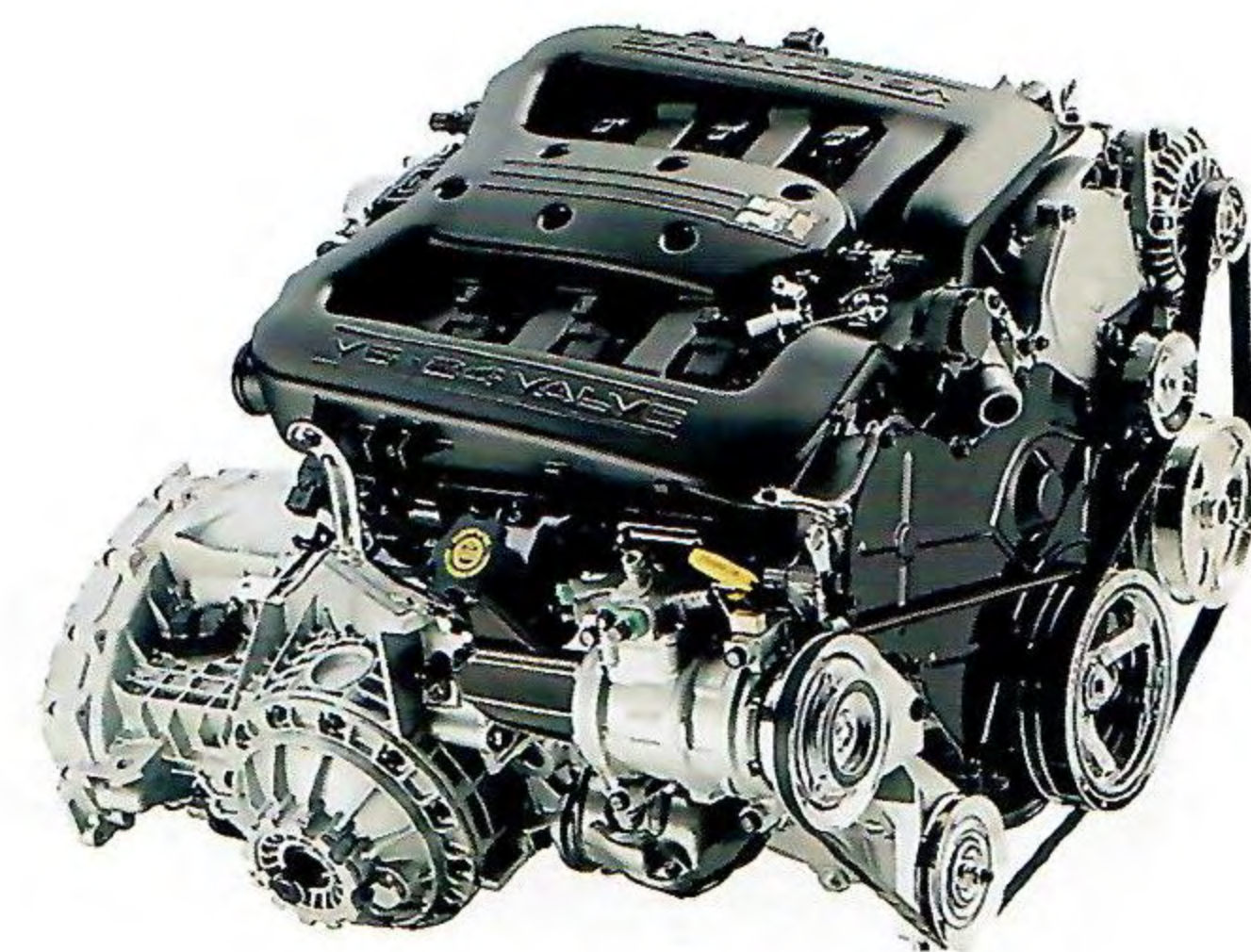
Watt's linkage rear suspension helps constrain lateral movement of the twist-beam rear axle, so there is less side-to-side variation for more precise handling.

CHRYSLER 300M



WHEN CHRYSLER DARED TO INTRODUCE the first 300, America's then-most-powerful production car, it was named after a robust, 300-horsepower Hemi® engine that in other coachwork had raced successfully at the Carrera PanAmericana and the 24 Hours of Le Mans. Those 300s then took to the speedways and bullrings of NASCAR® with great results. In the following decade, 300 designers dared to be different with grand-touring styling, taut suspensions and four-speed manuals... a framework of performance that was filled to overflowing with luxuries befitting the advanced mechanics. Enter now the most sophisticated Chrysler sport sedan, ever. **The 2001 300M. Who dares wins.**

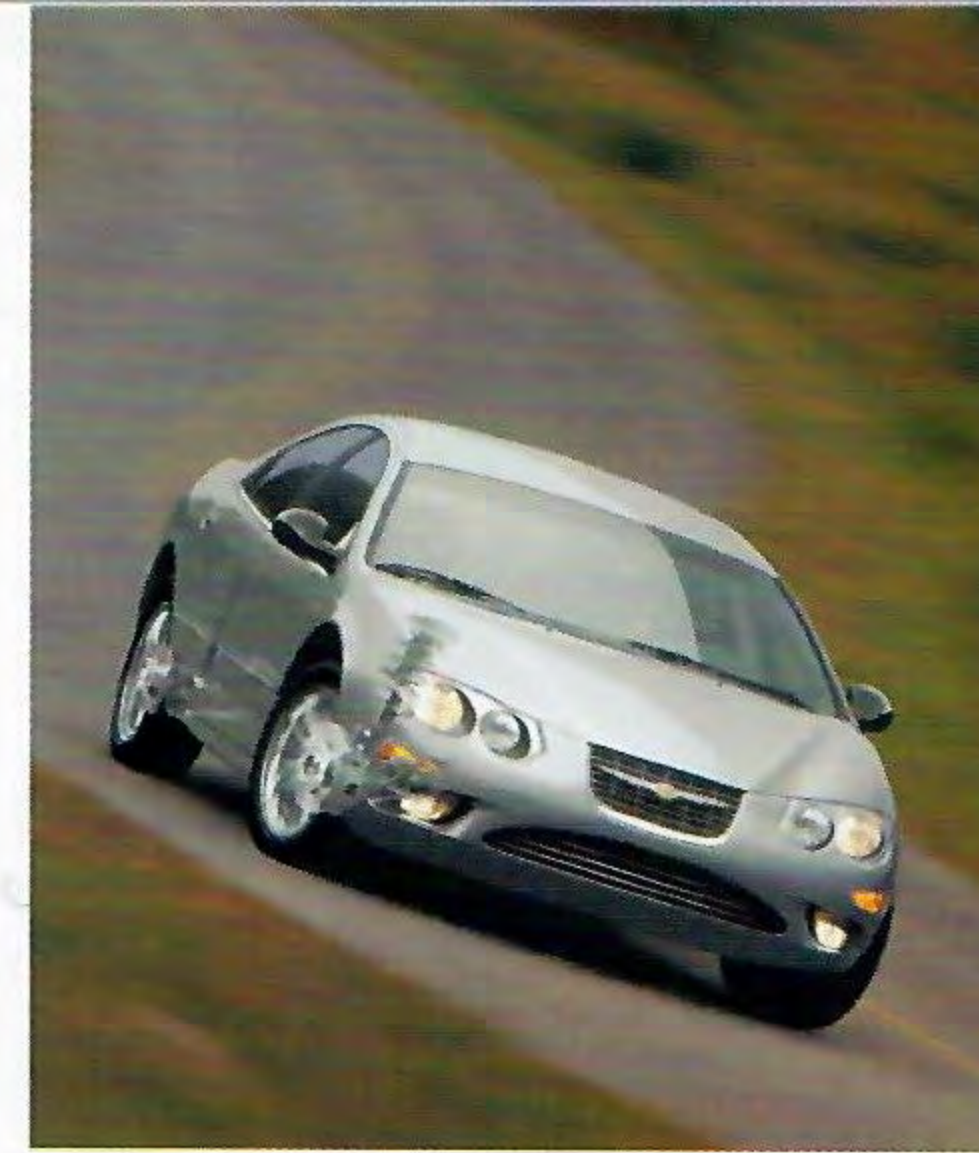
Here is a serious effort by an American car maker to build a serious touring sedan in the European tradition. It's the Chrysler 300M, and in 1999 and 2000, *CAR and DRIVER* named it as one of the magazine's "10Best." Now you know that it goes. That it's good looking shows. But the benchmark of the uncommon sporting sedan is how deftly it steers, stops and responds to demanding driver control input. This is no wannabe. For all that, 300M astonishes with its luxurious accommodations. Begin at an abundance of interior volume—105.1 cubic feet of fitted appointment and clever convenience.



This aluminum, SOHC 24-valve 3.5-liter High-Output V6 gets 100,000 miles between tune-ups* and produces 250 horsepower† at 6,400 rpm.

*Maintenance needs vary depending on vehicle use and driving conditions. See Owner's Manual for details.

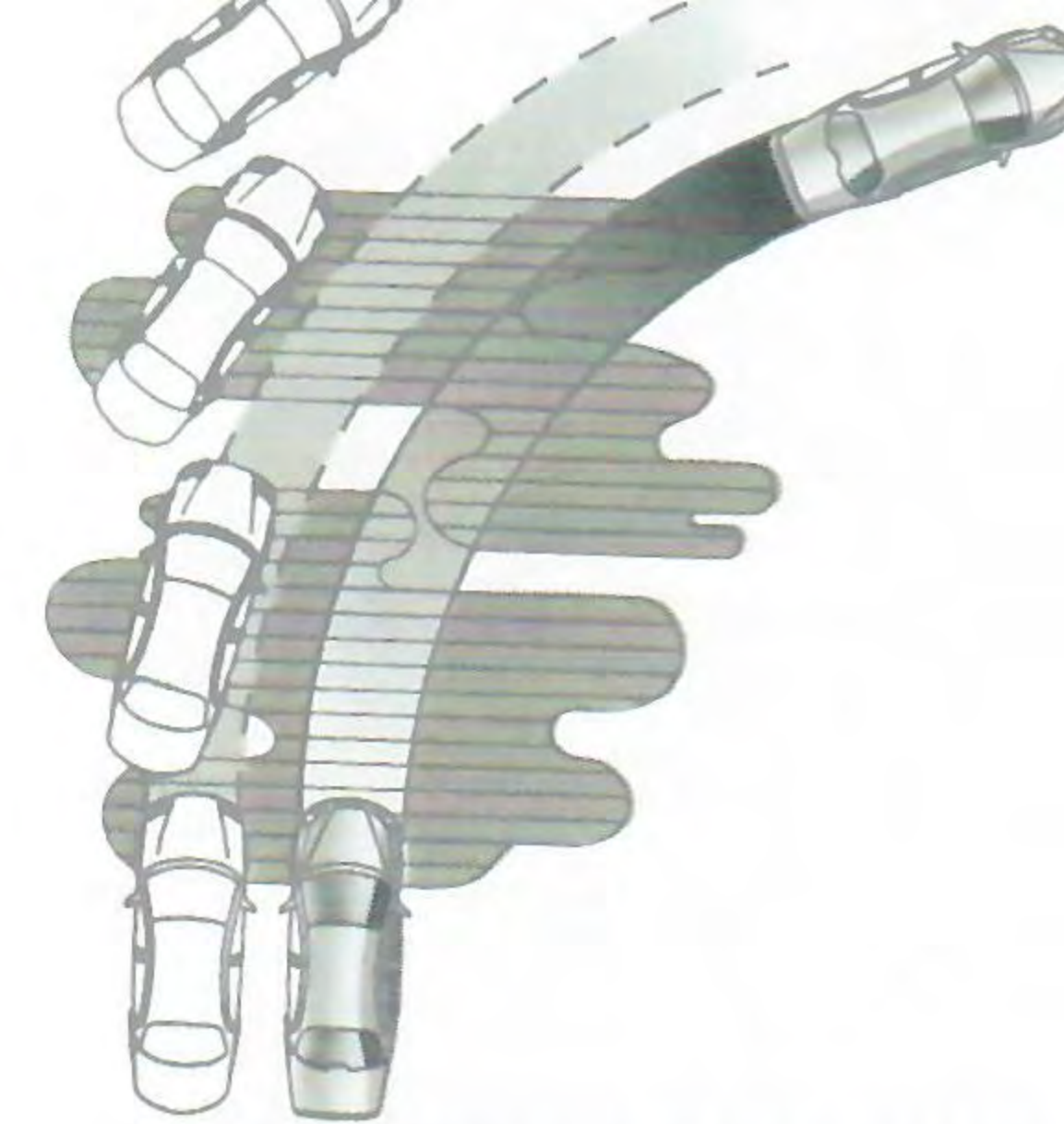
†When using midgrade fuel. This engine will operate safely and satisfactorily on regular unleaded fuel.



Here is a surprisingly quick and astonishingly agile driver's car—a true executive express.



300M has been selected in both 1999 and 2000 as one of the magazine's 10Best cars from around the world.



Four-wheel discs help reduce fade, and the antilock brake system helps 300M steer through slick weather emergencies during hard braking.



Tighter suspension tweaks in the available Performance Handling Group package boost 300M's cornering power to the max. Available new 17-inch chrome cast aluminum wheels emphasize raciness.



AutoStick® provides the option of clutchlessly selecting all gear changes—or cruising effortlessly via a supersmart four-speed automatic with overdrive.



CHRYSLER 300M

So fully equipped is 300M (a partial list of features is below) that only a handful of major options are available.

SELECT STANDARD FEATURES

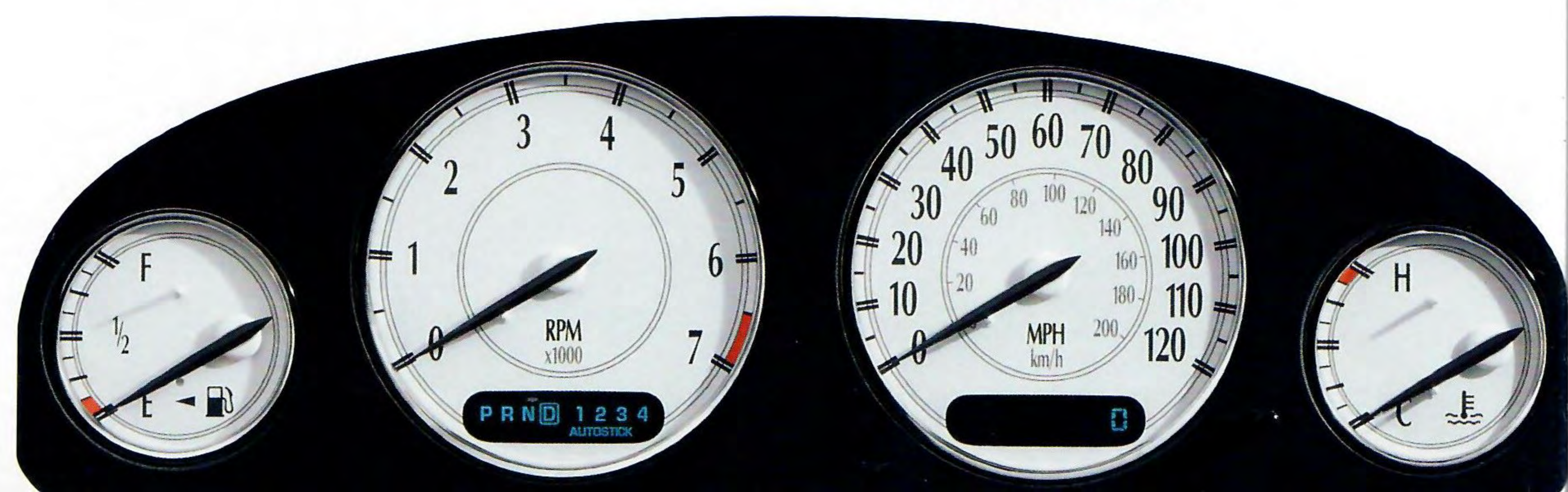
- Low-Speed Traction Control
- Fully independent suspension
- Quad-halogen headlamps
- Electronic speed control
- Solar-control glass
- Preset seat/radio/exterior mirror memory for two drivers
- Height-adjustable steering column
- CFC-free air conditioning with automatic temperature control
- User-ready child seat top tether anchors
- Vehicle Security System
- Heated, eight-way power front seating
- Huge, 16.8-cubic feet cargo capacity
- 60/40 split-folding rear seatback
- Trunk cargo net

Now for 2001, we've made available more richness and convenience than ever before, and added even more safety. A few examples? Subtle lustre with optional genuine California Walnut interior trim. Convenience through steering wheel-mounted audio controls. And safety with available smokeless, odor-free supplemental front side air bags* built into individual front seats that incorporate environmentally friendly inflation technology. Standard leather trim is augmented by strongly compelling exterior colors. It all adds up to a powerful aura. This latest addition to the Chrysler 300 letter series speaks softly. It carries a big stick.

*Always use seat belts. Children 12 and under should always be in a backseat correctly using an infant or child restraint system, or a seat belt that is right for their age and size.



Chrysler 300M leather-trimmed interior in Slate



Gauges' black graphics and creamy white faces are reminiscent of handcrafted, Swiss-made watches.



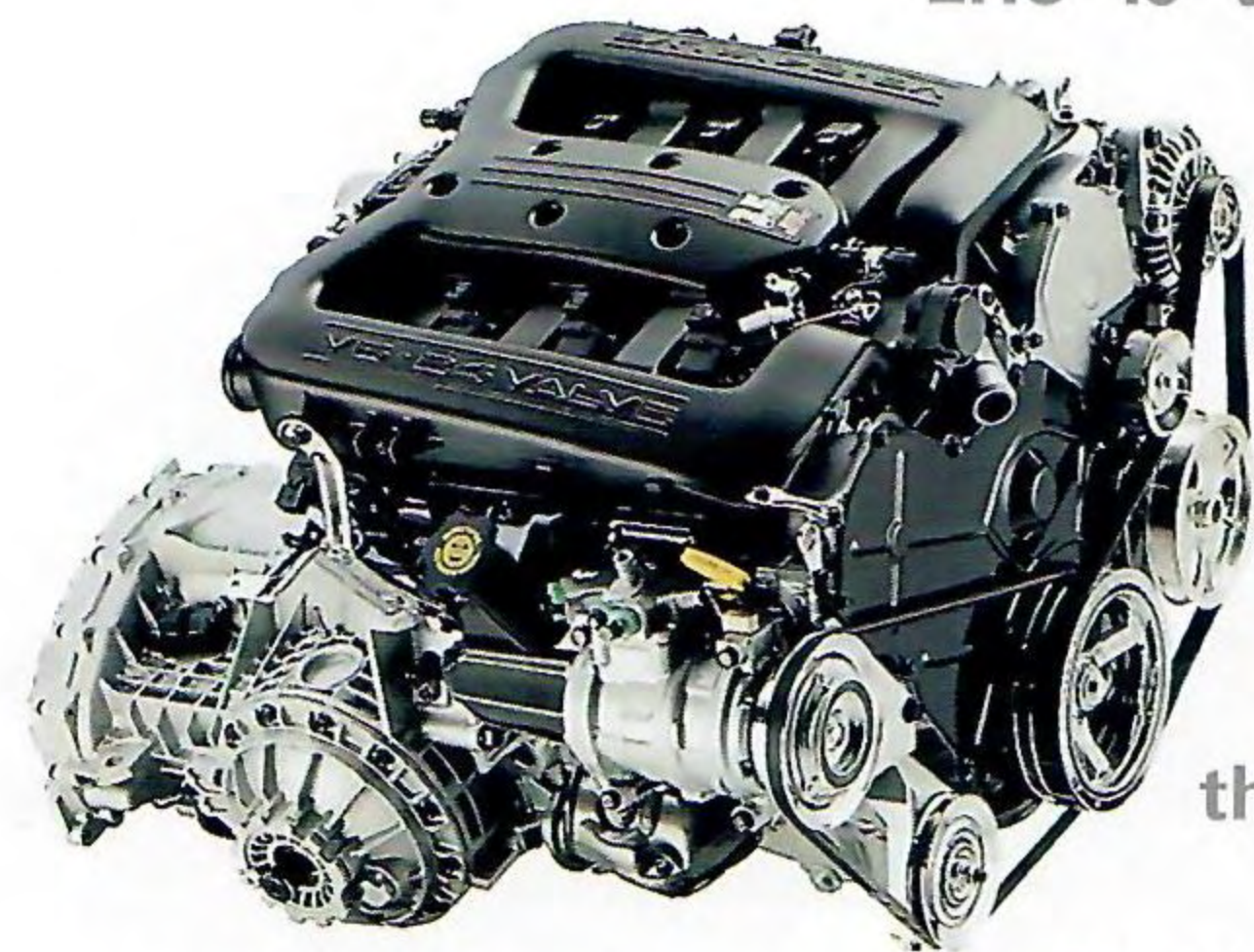
Convenient central overhead console has dual map lamps, compass, outside temperature, available driver-programmable Electronic Vehicle Information Center (EVIC), and HomeLink® Universal Transceiver.

Available Infinity II Spatial Imaging™ Sound System has 360 watts, with a four-disc in-dash CD changer.



Beautifully handcrafted standard leather trim provides rich contrast with 300M's optional genuine California walnut.

The most distinctive and best-bred luxury Chrysler ever. The 2001 Chrysler LHS is the embodiment of everything we've learned about the art and science of engineering great cars. One look will tell you that we've devoted quite a bit of attention to the concept of luxury.

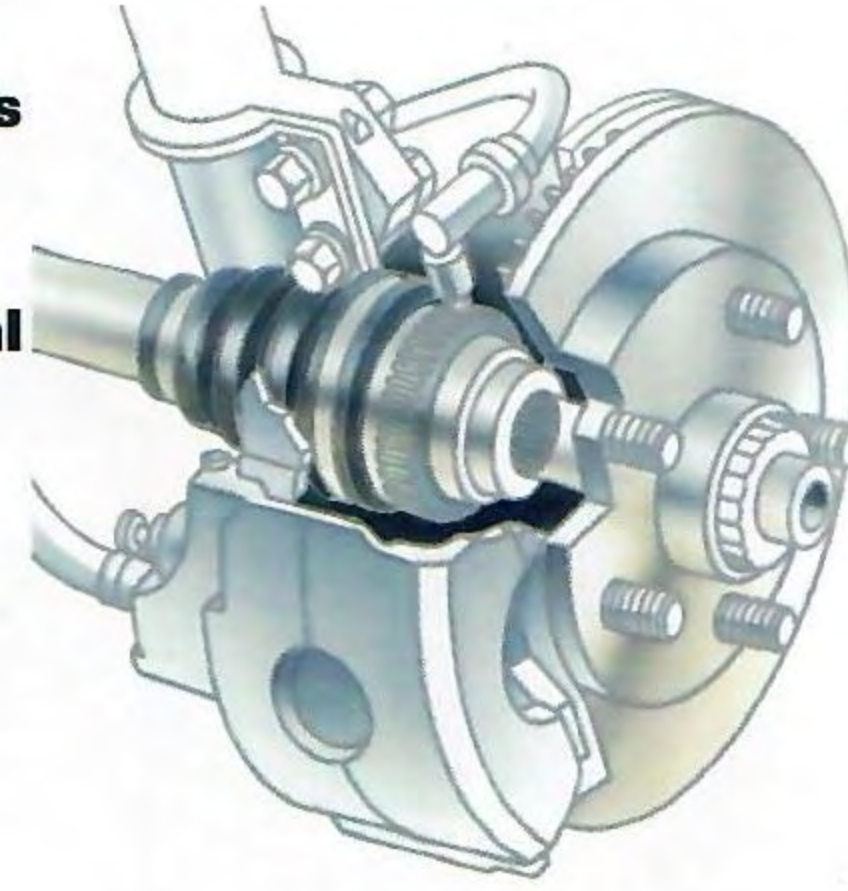


The aluminum 3.5-liter High-Output V6 is an engineering tour de force that delivers smooth, responsive performance.

Elegant styling is right before your eyes in the sophisticated LHS instrumentation.



Four-wheel disc antilock brake system provides positive, consistent pedal feel, plus increased fade resistance.



Designed with advanced computers, LHS' Unibody shell provides 37 percent greater torsional rigidity and 46 percent greater bending stiffness than prior models.



A refined rear-suspension aluminum crossmember produces a low-noise path transmission for a very quiet passenger compartment.



The wide-open and roomy 18.7-cubic-foot trunk features a convenient cargo net to help hold items in place and an inside emergency trunk lid release.

Properly secure all cargo.



Cab-forward roominess with an ambience of elegance. From the meticulously finished instrument panel to the rich,

supple, leather-trimmed seating, you'll see that Chrysler LHS' interior elevates the science of automotive ergonomics to an art

form. The exclusive cabin calls to mind the days of fine custom bodies—not production vehicles. Within the spacious and quiet 107.4 cubic-foot environment, rich appointments such as available walnut wood interior and steering wheel trim lend an air of refined luxury. The detailed stitching of the heated, eight-way power driver and front-passenger seats makes them look handmade. And a personalized memory system recalls the seat positions, outside mirror settings, even radio station presets for two drivers.

All controls and instrumentation, including steering wheel-mounted audio controls, are designed to minimize distraction while promoting an easy interactive relationship between car and driver.



Center analog clock lends the distinguished look of a fine timepiece.

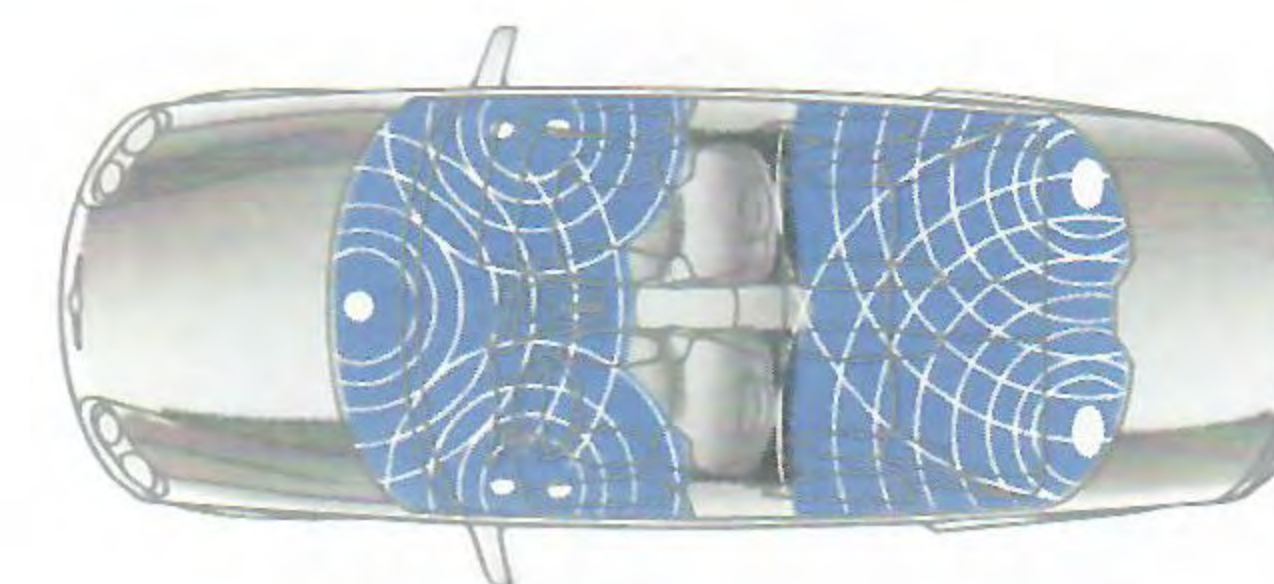
So many features are standard on LHS (a partial list is below) that only a few major options are available.

SELECT STANDARD FEATURES

- Low-Speed Traction Control
- Variable-assist speed-sensitive power steering
- Smooth four-speed electronically controlled automatic transaxle
- User-ready child seat top tether anchors
- Remote keyless entry
- Vehicle Security System
- 3.5-liter 24-valve V6 engine
- Air conditioning with automatic temperature control
- Trunk cargo net
- Rear armrest with storage and dual cup holders
- Power door locks, windows and trunk release
- Brake-Park Interlock



Chrysler LHS leather-trimmed interior in Dark Slate Gray



An available 360-watt Infinity II Spatial Imaging™ Sound System, with four-disc in-dash CD changer, fills the cabin's silence with breathtaking presence.

Trunk pass-through easily allows long objects to extend from the trunk into the passenger compartment.

Properly secure all cargo.



Overhead console contains: map lamps, compass, outside temperature, trip computer and HomeLink® Universal Transceiver.

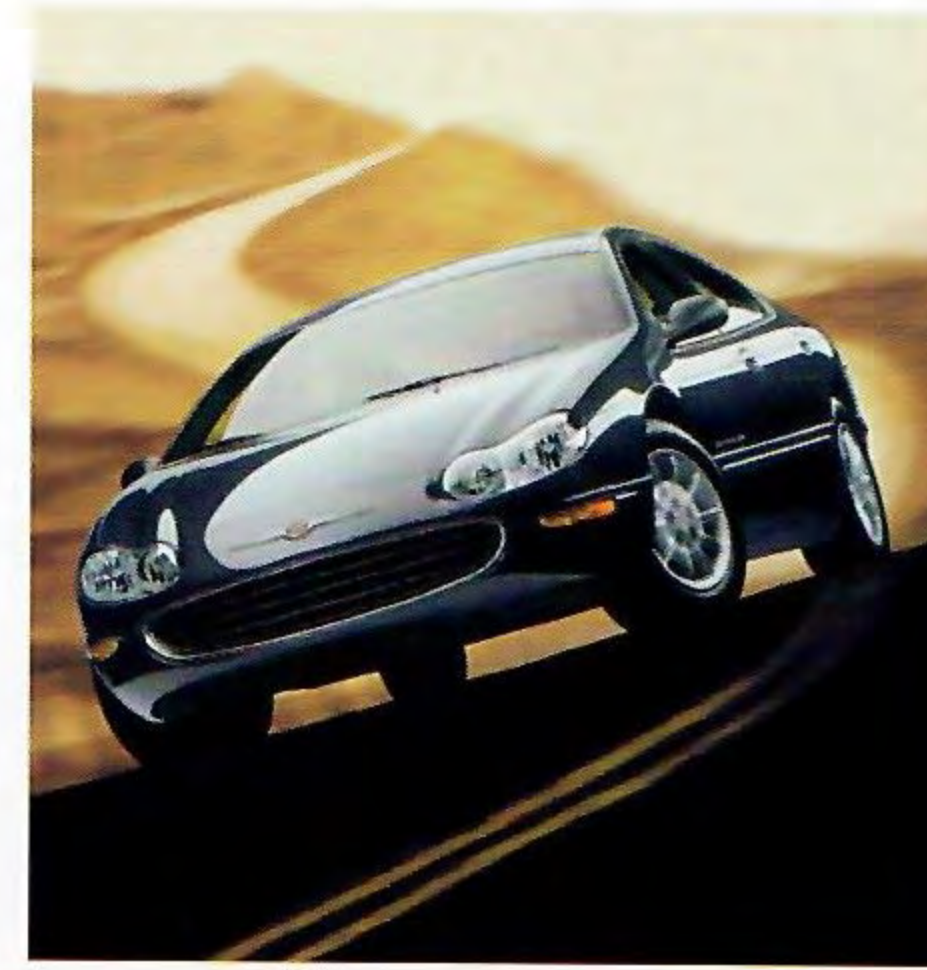


New available front-seat supplemental side air bags* provide additional protection for the driver and front passenger during a side-impact collision.

*Always use seat belts. Children 12 and under should always be in a backseat correctly using an infant or child restraint system, or a seat belt that is right for their age and size.



CONCORDE



Alluring outside and spacious inside. Agile

and powerfully responsive.

In a word, sophisticated...a careful

blending of looks and legacy that

combines sleek expressive styling

with a heritage of innovative

engineering. The result is Concorde, the

next generation of Chrysler's acclaimed

cab-forward design. The evolution of that

design gives Concorde its stunning looks,

a silhouette sensuously styled in a single,

continuous, sculptured line. But it is the

legacy of Chrysler engineering that

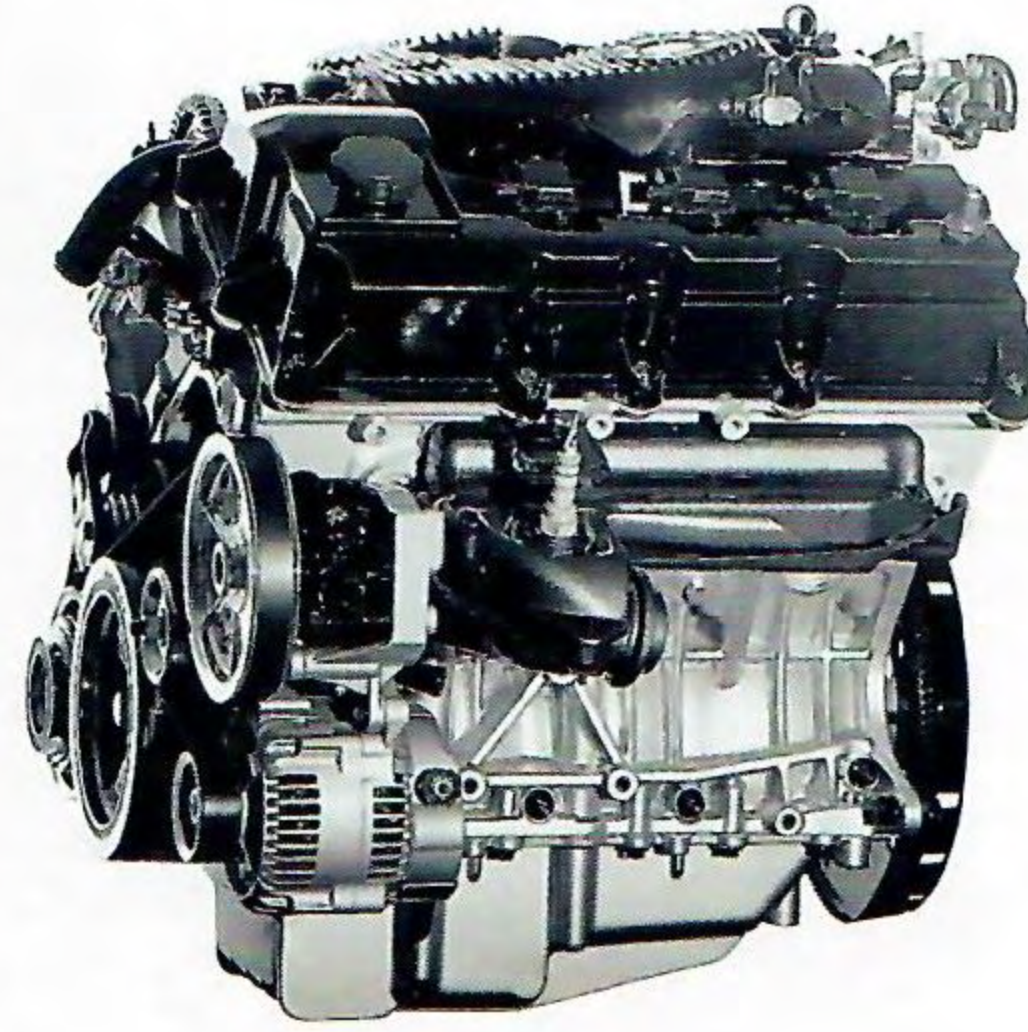
provides Concorde-on-the-road with its

zest and agility, behaving for all the world

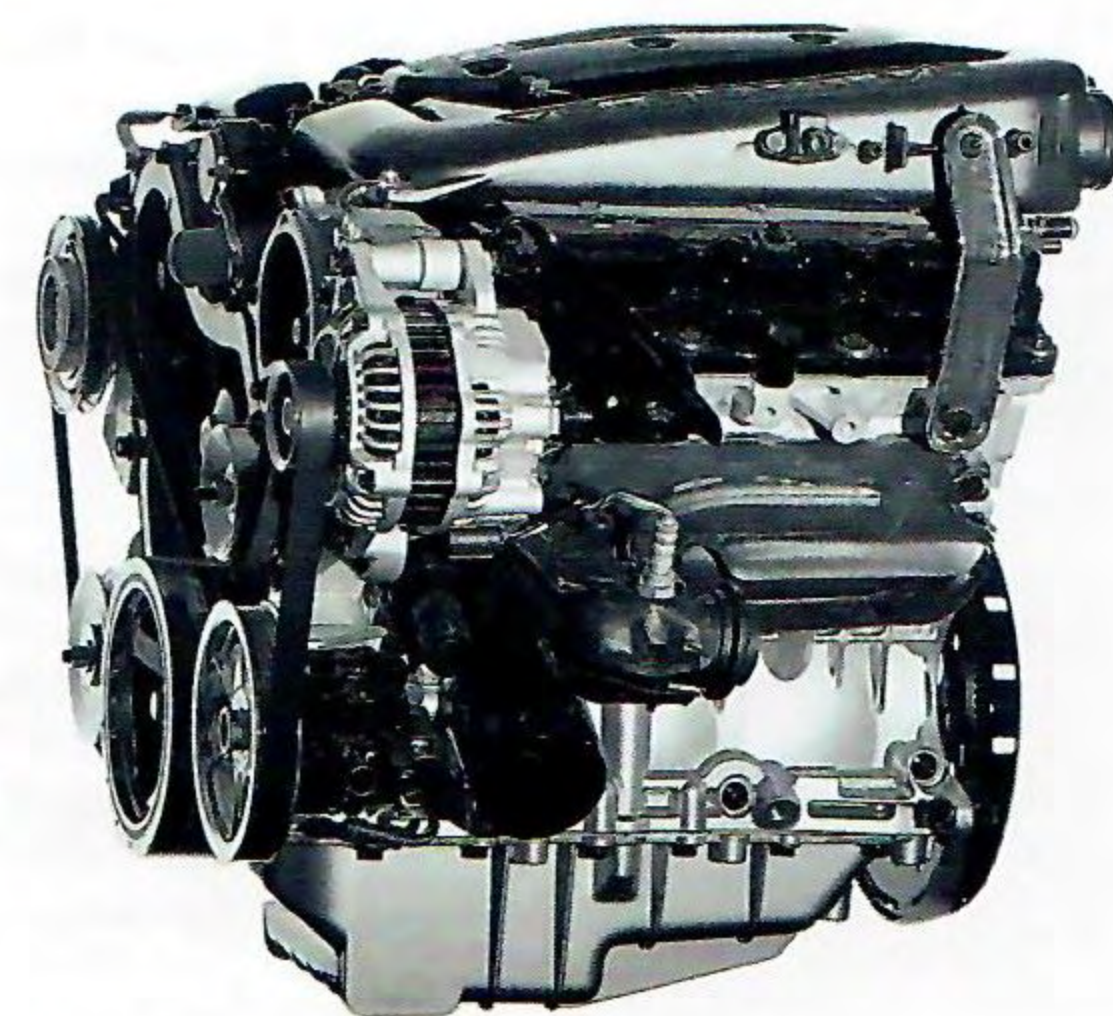
like a spirited coupe. Tasteful design.

Practical engineering. Refined.

The 2.7-liter 24-valve V6 with dual overhead cams, standard on Concorde LX, delivers 200 horsepower.



Concorde LXi has a 3.2-liter 24-valve V6 that generates 222 horsepower. Both engines feature leak-free design and 100,000-mile spark plugs.*

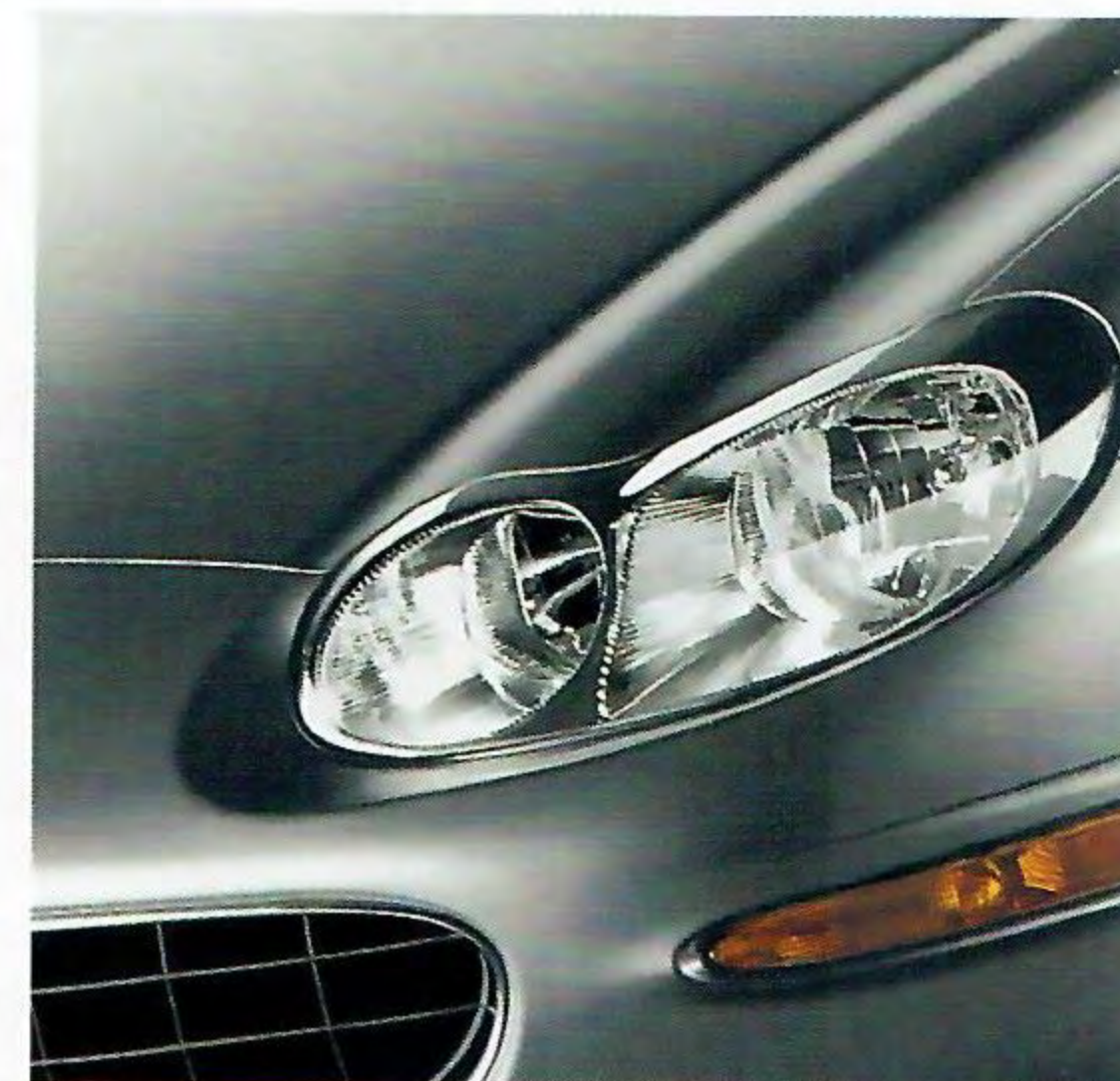


*Maintenance needs vary depending on vehicle use and driving conditions. See Owner's Manual for details.



Concorde LXi in Bright Silver Metallic

Optic-free lenses and high-powered reflectors contribute to Concorde's world-class halogen illumination.



Newly available for Concorde are supplemental side air bags* for front outboard occupants.

*Always use seat belts. Children 12 and under should always be in a backseat correctly using an infant or child restraint system, or a seat belt that is right for their age and size.



Concorde comes with a whole lot of comfort. And much of it is standard, including:



An Infinity II Spatial Imaging™ Sound System, with in-dash four-disc CD changer, is available on Concorde LXi.

SELECT STANDARD FEATURES

- Two-speed windshield wipers with speed-sensitive variable intermittent mode
 - Solar-control glass
 - User-ready child seat top tether anchors
 - Remote keyless entry
 - Fully independent touring suspension
 - Power trunk lid release and an inside emergency trunk lid release
 - Brake-Park Interlock
- LXi ADDS**
- Leather-trimmed seating with eight-way power front seats
 - Automatic temperature control
 - 3.2-liter 24-valve V6 engine
 - Vehicle Security System with Sentry Key® Engine Immobilizer
 - Four-wheel disc antilock brakes and Low-Speed Traction Control
 - 16" aluminum wheels
 - Overhead console

air conditioning, remote keyless entry, illuminated visor vanity mirrors, fold-down rear seat armrest, center console with second power outlet, electronic speed control, power exterior mirrors, power windows with driver's one-touch-down feature, and speed-sensitive power door locks. Steering wheel audio controls are now included with the available Infinity® Sound System. The luxury of a five-passenger leather-trimmed interior, with eight-way power front bucket seats and leather-wrapped steering wheel and shift knob, is standard on Concorde LXi. Unique interior color tones richly enhance Concorde's feeling of spaciousness. Wood-grained accents provide a warm welcome. Six-passenger seating is available with the addition of a 50/50 split-bench front seat.



LXi's standard overhead console, with map lamps, compass, temperature, HomeLink® Universal Transceiver and trip computer functions, is also available on Concorde LXi.



Trunk pass-through, built into the center of the rear seat-back, provides access to the massive 18.7 cubic-foot trunk. Fold-down armrest has storage space and two cup holders.

*Properly secure all cargo.



The soft-touch urethane surface of the upper instrument panel was an industry first. Courtesy lamps feature automatic theater-style dimming. Steering wheel-mounted audio controls are available.



SEBRING



When you slow down during a turn, the available ABS Plus portions out brake force separately to each wheel, providing increased stability.

New Sebring's wind-slicing, wedge-shaped good looks are the tip-off. This is a car that will rock the bland world inhabited by so many midsize sedans. The new available 2.7-liter multipoint fuel-injected V6 unites with an ultra-rigid rail-thru body structure and advanced short-/long-arm suspension to deliver a ride experience you would have sworn was exclusive to far more expensive cars with impeccable European pedigrees. But new Sebring is not just about expanding your sensory pleasure horizon. It's also about personal safety. With such important new protective features as standard front seat belt pre-tensioners that automatically tighten your seat belt when an impact is detected. There are also optional supplemental side air bags,* for side-impact protection.

*Always use seat belts. Children 12 and under should always be in a backseat correctly using an infant or child restraint system, or a seat belt that is right for their age and size.

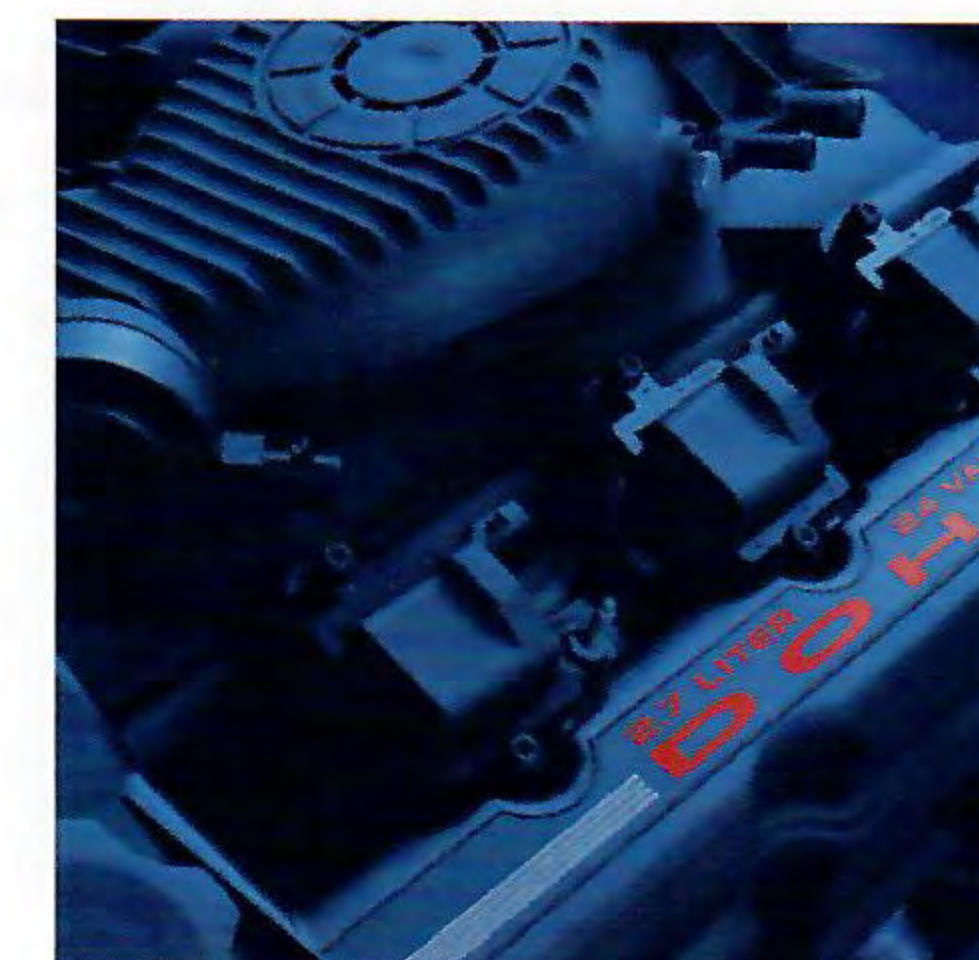


Sebring LXi in Bright Silver Metallic



Sebring LX in Dark Garnet Red Metallic

Two body-length steel rails, plus a front steel cross-car beam, contribute to a greatly stiffened structure, for a sense of secure, unruffled command on curves, straightaways and in maneuvers through traffic.



Formidable force allied with hushed, refined manners is the hallmark of Sebring's available 2.7-liter 200 horsepower DOHC 24-valve V6.



The AutoStick® shifter, available on the LXi, allows you to either shift manually through the gears or cruise smoothly with the four-speed automatic.



Sebring's dramatically designed halogen headlamps radiate out a broad, long beam of bright light for exceptional night vision.

SEBRING



An available four-disc CD changer fills the time and the air around you with sounds of your own choosing.

SELECT STANDARD FEATURES

- 2.4-liter 4-cylinder engine
- Four-speed automatic transaxle
- Power windows, door locks, exterior mirrors and trunk
- 60/40 split-folding rear seatback
- AM/FM stereo radio with cassette and four speakers
- 15-inch chrome wheel covers
- Four-wheel disc brakes
- Short-/long-arm suspension
- Power rack-and-pinion steering
- Next Generation multistage driver and front-passenger air bags*
- Premium cloth seating

LXi adds:

- 2.7-liter V6 engine
- Remote keyless entry
- Eight-way power driver's seat
- Traveler's Display
- Leather-trimmed seating
- 16-inch wheels
- Optional Luxury Group
- Optional ABS Plus
- Available Premium Gold™ six-speaker sound system
- Optional power moonroof
- Available 16-inch chrome wheels

*Certified to the Federal Regulations that allow less forceful front air bags. Always use seat belts. Children 12 and under should always be in a backseat correctly using an infant or child restraint system, or a seat belt that is right for their age and size.

While the outside of the 2001 Sebring reflects its performance instincts, the inside resonates of quiet comfort and tasteful luxury. And, of course, the magic realism of an available Premium Gold™ stereo sound system powered by 120 watts. For the driver there's an available eight-way power seat that adjusts to all the ergonomic zones. A front-seat center console has a padded armrest large enough for both passenger and driver to use simultaneously. In the center of the instrument panel is the available Traveler's Display that, at a touch, gives you such vital data as the estimated distance you can travel before refueling, the outside ambient temperature and your compass reading. The standard 60/40 split backseat has separate fold-down seatbacks to accommodate lengthy cargo. Altogether a very pleasant locale to enjoy the spirited Sebring performance.

Convenience, luxury and art become one in Sebring's LXi interior.



Sebring LXi leather-trimmed interior in Dark Slate Gray



Properly secure all cargo.

Sebring's 60/40 split-folding rear seatback folds down easily for increased cargo space.



The available Traveler's Display tells you at a glance such valuable trip information as your gas mileage, the outside temperature and your compass direction.



Properly secure all cargo.

Sebring LX cloth interior in Taupe 25

SEBRING COUPE

When you lay eyes on the new 2001 Sebring Coupe, you're sure to experience one of those rare instances when your heart and mind agree. Your heart falls in love with the stylishly sporty lines. Your mind likes the long list of standard features. Here is the perfect blend of performance and sophistication. Plus comfort and convenience features you might not expect in a coupe—like a roomy interior and generous cargo-carrying ability. The new Sebring Coupe delivers it all, while also providing the more traditional coupe road car attributes like superior road-handling ability and healthy acceleration.



Sebring LXi's standard 3.0-liter SOHC 24-valve V6* generates 200 horsepower* at 5,500 rpm. Real-world translation: Zero to 60 in just over eight seconds.

*Built by Mitsubishi Motors Corporation.
*With five-speed manual transaxle and premium fuel.



Sebring LXi Coupe in Ice Silver Pearl Coat

Available on LXi, the optional AM/FM stereo radio with in-radio four-disc CD changer, seven speakers and Infinity® Sound System will satisfy even the most discerning music aficionado. Loaded up with your favorite CDs, it's like driving your own private concert hall.



Standard wheels for LXi are 17-inch cast aluminum with a brilliant silver finish. These wheels are also available with a chrome finish to add a touch of elegance.



The sleek, sophisticated styling of Sebring LX Coupe beckons you. It combines all the interior spaciousness and many of the comfort and convenience features found in LXi in a very affordable package.



Sebring LX Coupe in Black

SEBRING COUPE

SELECT STANDARD FEATURES

- 2.4-liter 16-valve SOHC four-cylinder engine*
 - Four-speed automatic transaxle
 - Air conditioning
 - Speed-sensitive power steering
 - AM/FM stereo radio with cassette player and six speakers
 - Power windows, locks and mirrors
 - Integral fog lamps
 - Electronic speed control
 - User-ready child seat top tether anchors
- LXi ADDS**
- 3.0-liter SOHC 24-valve V6*
 - Compass and temperature center display
 - Dual illuminated visor vanity mirrors
 - AM/FM stereo radio with cassette player, CD player and Infinity® Sound system with seven speakers

The exterior beauty of Sebring LX and LXi Coupe is only a hint to the richly appointed, driver- and passenger-friendly interior. It is a much more comfortable—and spacious—atmosphere than you may think of when the word coupe is used. Bear in mind that Sebring offers room for you and four of your closest friends to stretch out and enjoy the ride. Sebring also offers more cargo-carrying ability than you would expect from a coupe. And Sebring's 60/40 split-folding rear seatback extends that capability even more. Available leather-trimmed seating surrounds you in richness and comfort. With so many creature comforts to bask in, you may find yourself looking for a new, and longer, way home.

Sebring LX, with its new 2.4-liter 16-valve SOHC four-cylinder engine* producing 142 horsepower at 5,500 rpm, will keep the driver happy with its healthy acceleration and passing ability.

*Built by Mitsubishi Motors Corporation.



Sebring's driver-oriented instrument panel is a dream come true. Information from the speedometer, tachometer and other gauges easily assimilated. Standard features like the tilt steering column and, on LXi, compass and outside temperature display, will help make your drive more pleasant.



The 60/40 lockable split-folding rear seatbacks add to your cargo-carrying capability. Fold down one side or both and carry long items in the trunk. Properly secure all cargo.



Sebring LX Coupe cloth interior in Black/Beige

Cloth interior is standard on LX and offers a manual driver's seat height adjustment and an easy-entry passenger seat that slides forward as the seatback folds, for easier access to the backseat.



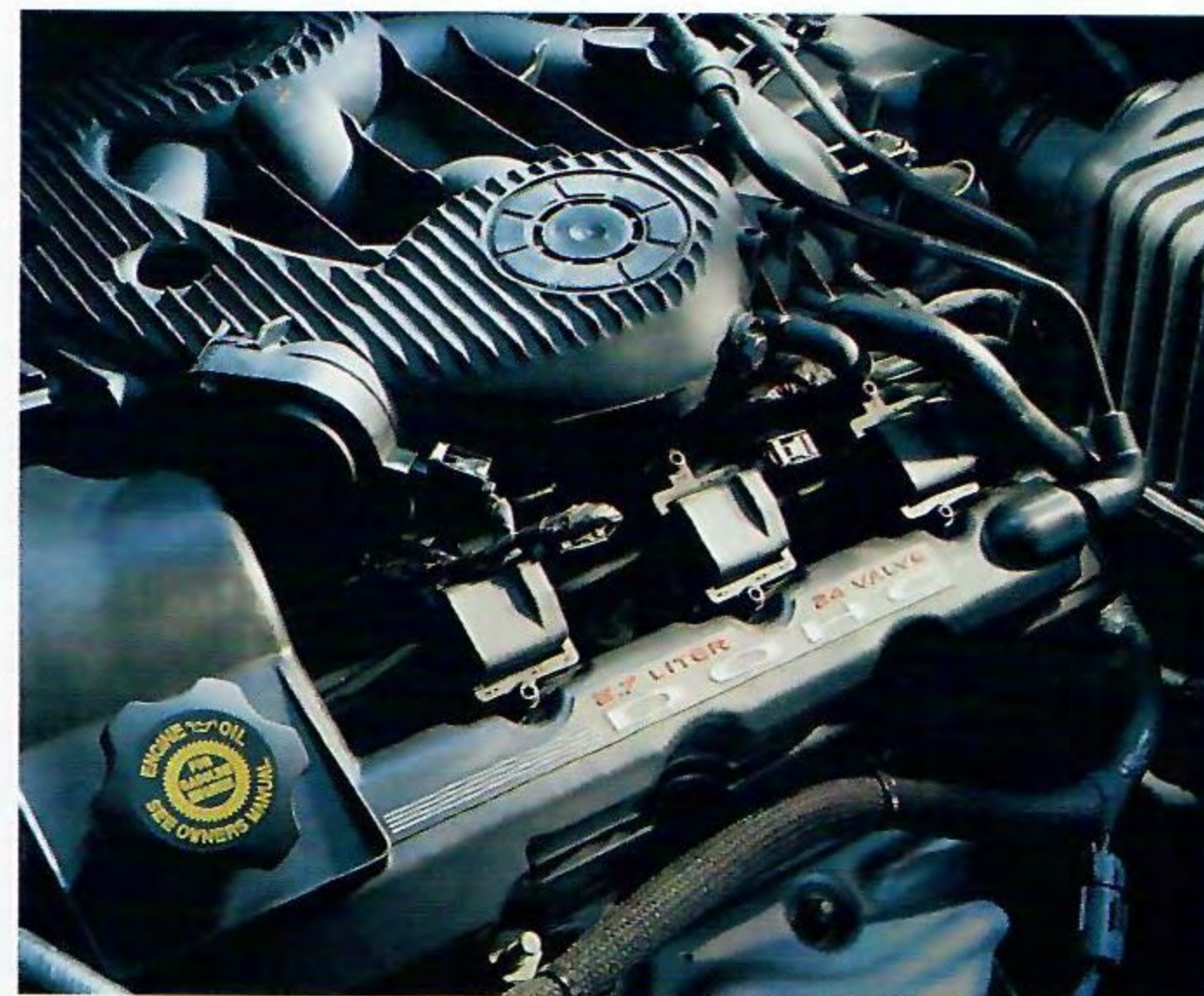
Sebring LXi Coupe leather-trimmed interior in Black/Light Gray

SEBRING CONVERTIBLE

Presenting the 2001 Sebring Convertible.

Here is the beautifully Euro-styled, brilliantly

engineered and precisely crafted next generation of the proven winner that for years has been North America's favorite.* And for good reason. Now, more than ever, this convertible's surprising



Structurally ribbed aluminum 2.7-liter V6 is engineered for more silent-running as well as pep—its block absorbs noise, dampens vibration.

versatility whispers softly of the subtropics, but stoutly defies the icy reality of northeastern winters. It's quick, too. An all-new-to-Sebring, 2.7-liter dual overhead cam V6 develops 200 horsepower for spirited acceleration. The level of Sebring Convertible's standard equipment is complete. Its luxury appointments and clever conveniences are impressive and its interior volume amply accommodates four in supportive comfort.

*Based on total registrations from 1996 through 1999.



New halogen-bulb headlamps provide a broader, longer road pattern. Separate high and low beams ensure optimum function.



LXi models have standard 16-inch aluminum wheels that are shod with P205/60R16 all-season rubber for good wet/dry traction. (Also available on LX.)



Sebring Limited Convertible in Sterling Blue

Sebring Convertible's three models provide purchase options ranging from base LX to unique, top-of-the-line Limited, above. The LXi shown below has an impressive array of standard luxury features.



SEBRING CONVERTIBLE

SELECT STANDARD FEATURES

- 2.7-liter V6 engine
- 4-speed automatic transaxle
- Power convertible top
- Power windows, door locks, heated exterior mirrors and trunk
- Six-way power driver's seat
- AM/FM stereo radio with cassette and six speakers
- Remote keyless entry
- 15-inch wheels and tires
- Four-wheel disc brakes
- Speed control
- Next Generation multistage driver and front-passenger air bags*
- Premium cloth seating

LXi ADDS:

- Traveler's Display
- Leather-trimmed seating
- 16-inch wheels and tires
- Fog lamps
- AM/FM stereo radio with CD player
- Sentry Key® Engine Immobilizer
- HomeLink® Universal Transceiver
- Automatic day/night rearview mirror
- Infinity® Sound System

LIMITED ADDS:

- Unique Royal Blue and Cream interior color scheme
- Premium leather-trimmed seating
- AutoStick®
- Electroluminescent instrument cluster
- In-dash four-disc CD changer
- 16-inch chrome wheels

*Certified to the Federal Regulations that allow less forceful front air bags. Always use seat belts. Children 12 and under should always be in a backseat correctly using an infant or child restraint system, or a seat belt that is right for their age and size.

Sebring's unique top is what puts the distance between it and other convertibles—it's a fine example, too, of the Chrysler commitment to engineering excellence. Double-insulated with a fully trimmed headliner, Sebring's top for 2001 has denser insulation and a meticulous resealing to buffer outside clamor and climate. New, one push of a button lowers not only the top, its glass rear window with electric defroster, but completely lowers all four side windows. Now turn an ear to the available Infinity® Sound System that equalizes its audio output automatically to match the position of the top. And how about a four-speed electronic automatic transaxle that adapts to your driving patterns? That's Chrysler Sebring Convertible.

Luggage volume, plus. Here is 11.3 cubic feet of volume. Lid opens to no-strain lift-over. It also has an inside emergency trunk lid release.



Sebring LXi Convertible leather-trimmed interior in Taupe



Available in-dash four-disc CD changer provides hours of listening enjoyment.

Interior has 90.3 cubic feet of volume — huge by convertible standards.



Sebring Limited Convertible leather-trimmed interior in Royal Blue/Cream

CHRYSLER TOWN & COUNTRY ... THE BEST MINIVAN EVER*



This year we're proud to celebrate 17 years of producing America's favorite minivans. In total, DaimlerChrysler Corporation minivans, with more than eight million sold, have won over 130 awards and boast a long roster of critical acclaim. You see, at DaimlerChrysler we don't believe in just offering you the standards. We believe in setting them with new industry-first features and continuous refinements. Whether you're looking for a do-it-all minivan that's ready for your active family, a distinctive minivan that achieves the pinnacle of sumptuous luxury, or something in between, there's a Chrysler minivan waiting just for you.

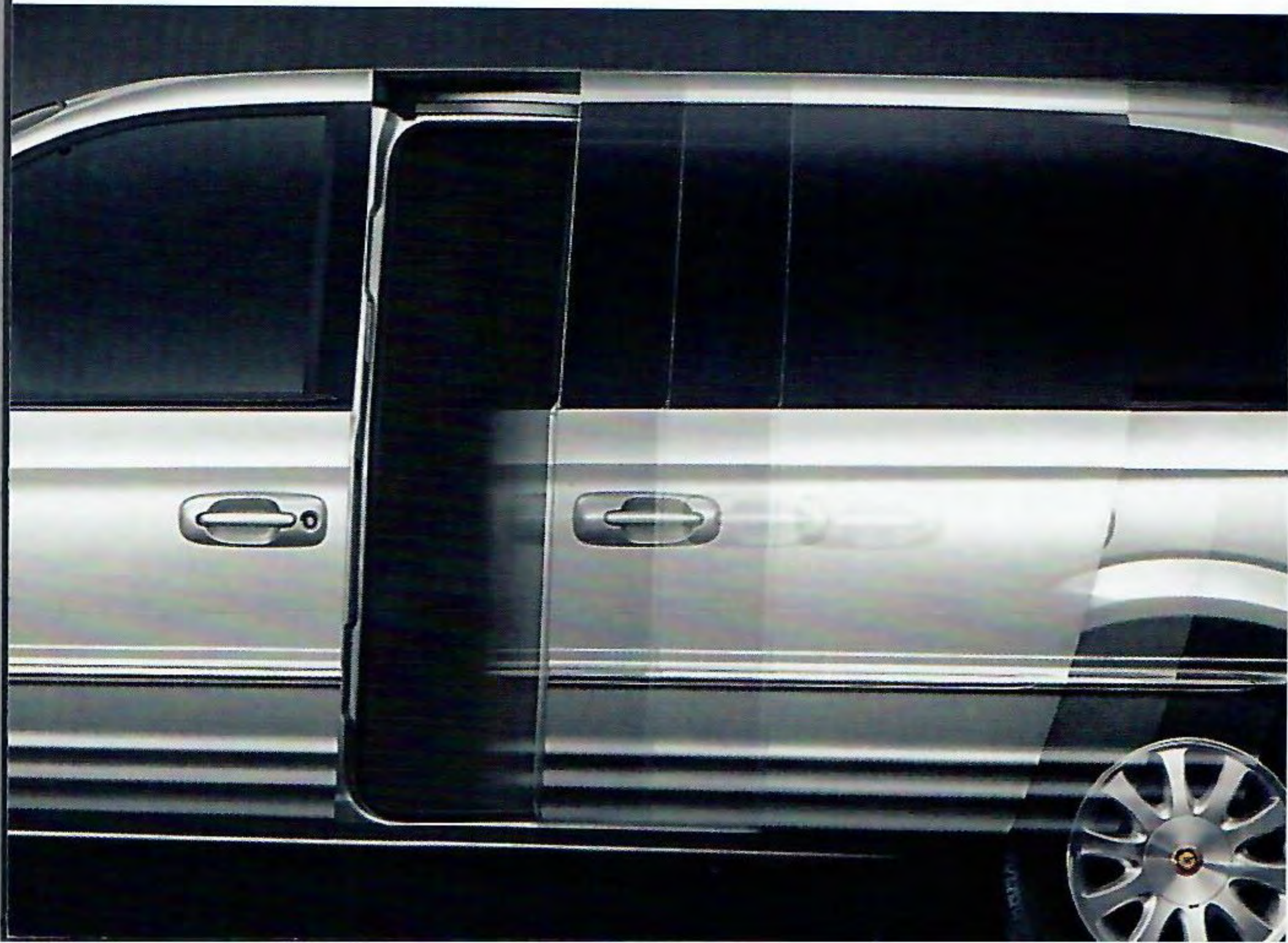
TOWN & COUNTRY LIMITED



The all-new extended wheelbase Town & Country Limited is unlike any other. There's more luxury and sophisticated performance. Plus a higher level of quality through-

New industry-first power liftgate offers the total convenience of opening and closing the liftgate with a push of a button on the multifunction key fob. Includes Obstacle Detection System for safety.

New power sliding doors are powered by the industry's first inside-the-door motors. Opening and closing the left or right door takes only a few quick seconds.



out and a solid commitment to safety. This is the strongest and quietest minivan we've ever built. And with luxuriously comfortable seating for seven, Limited has enough interior space to cater to your longest weekend getaway. You'll also appreciate Limited's thoughtful features that include heated eight-way power front seats, electro-luminescent instrument cluster, and overhead console that contains: map lamps, compass, HomeLink® Universal Transceiver, and driver-programmable Electronic Vehicle Information Center (EVIC).



Movable center console with power outlet.



Properly secure all cargo.

Town & Country Limited leather-trimmed interior in Navy Blue w/Preferred Suede

Limited's Preferred Suede® appointments complement the glove-soft leather-trimmed seven-passenger seating. Small items can be neatly contained in the front-seat cargo net. New Three-Zone Automatic Temperature Control permits separate regulation of the temperature for driver, front passenger and rear occupants.



TOWN & COUNTRY LXi



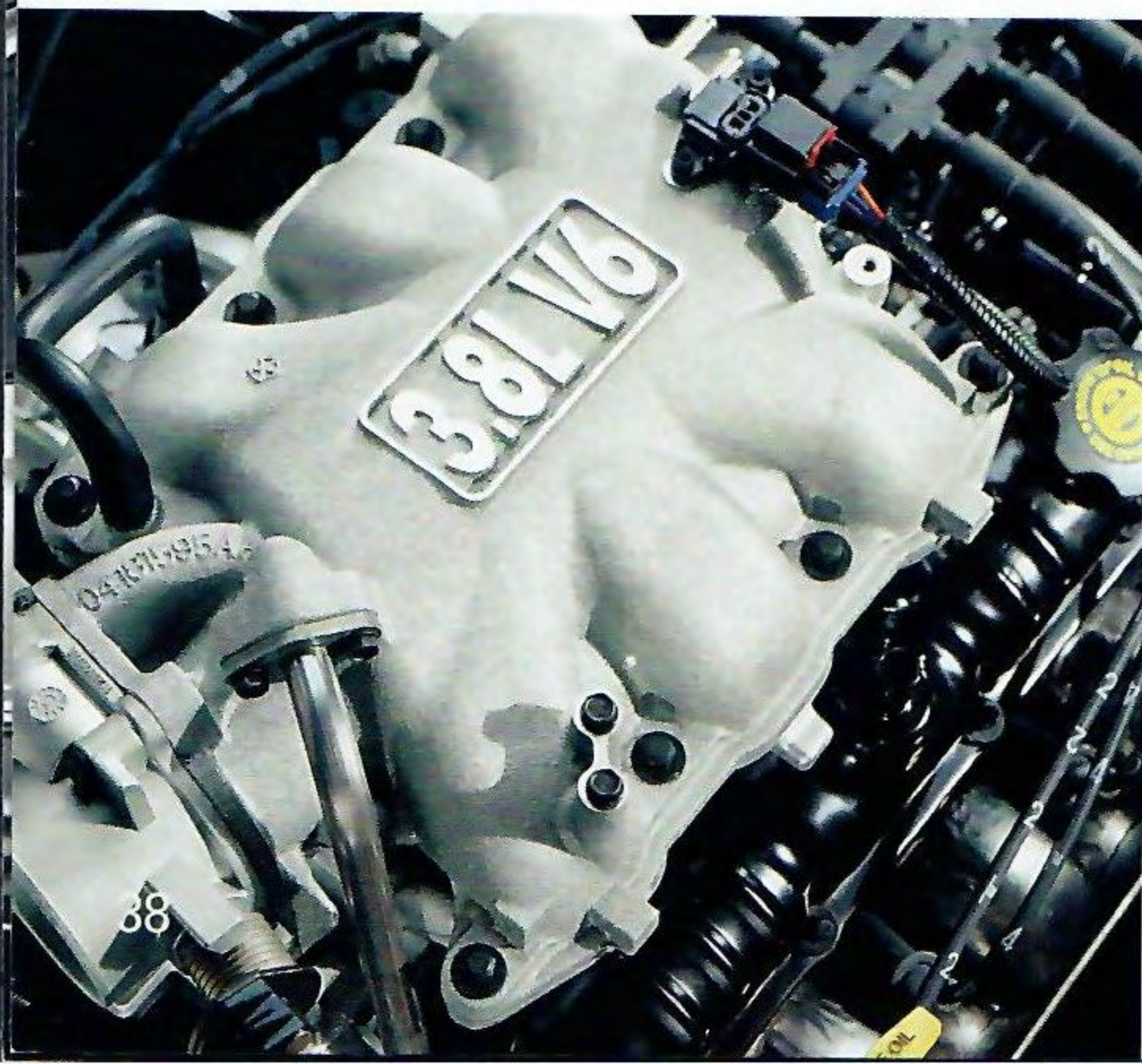
New standard Three-Zone Automatic Temperature Control is another minivan-first feature that allows separate regulation of the temperature for driver, front passenger and rear occupants.

Town & Country LXi offers superb luxury with leading-edge styling, outstanding driveability, and a generously appointed, distinctively spacious cabin. Enjoy the superior engineering that LXi's available whisper-quiet 3.8-liter SMPI V6 engine and load-leveling suspension can deliver. The luxury amenities are what you've come to expect from a Town & Country. Only now they're even better. Here's a sampling: remote keyless entry, 50/50 split-bench rear seat, available rear cargo organizer (late availability), power sliding doors, and available power liftgate.



Town & Country LXi in Steel Blue Pearl Coat

Redesigned available 3.8-liter V6 engine provides increased horsepower (215 hp) and quieter operation.



Available eight-way power front seats, with driver-side memory, are leather trimmed and comfortably heated.

Overhead console contains outside temperature, Versa-Bin,TM switches for optional power features and HomeLink[®] Universal Transceiver.



Elegant and comfortable leather-trimmed seating and Quad Command convenience is available on Town & Country LXi.



Properly secure all cargo.

Town & Country LXi available leather-trimmed interior in Navy Blue

TOWN & COUNTRY LX

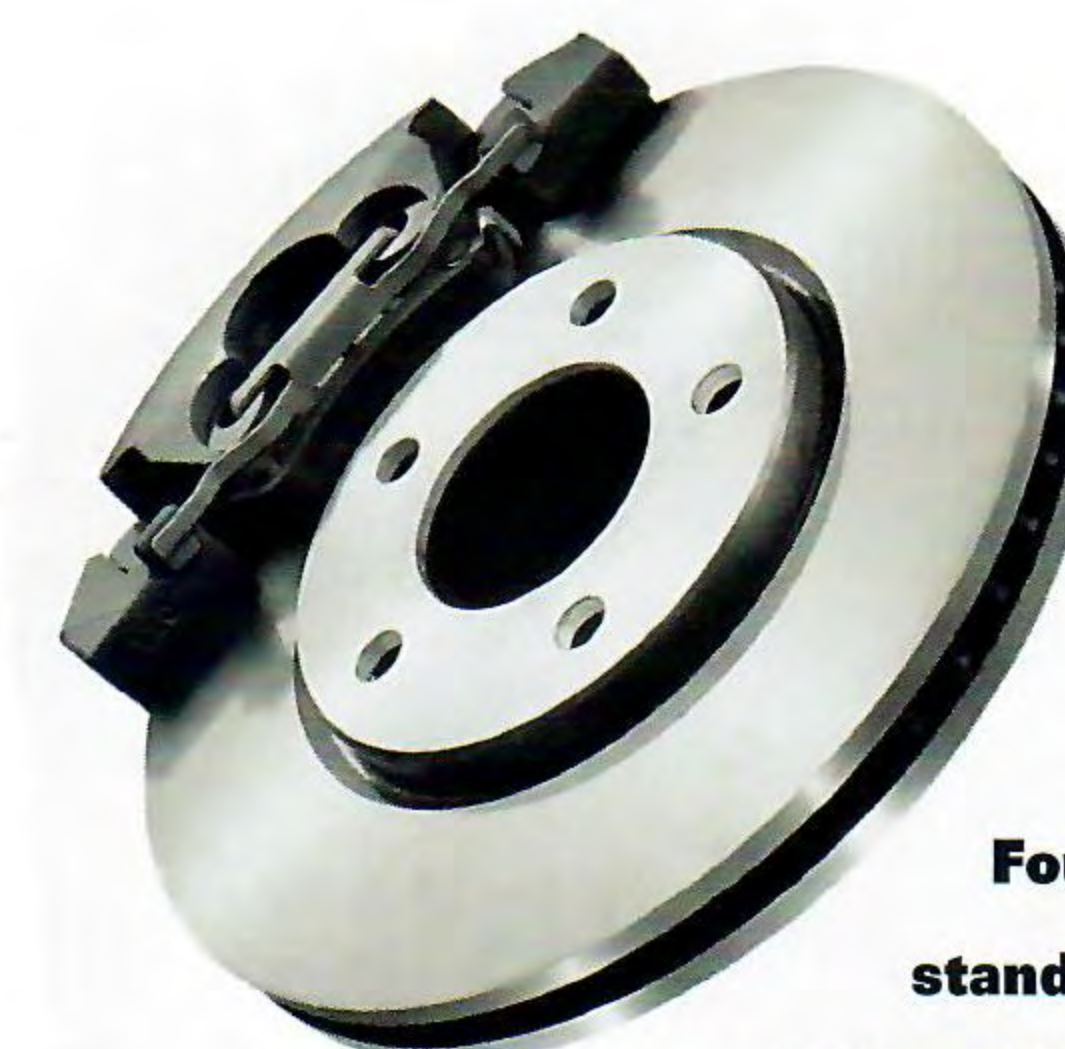
SELECT STANDARD FEATURES

- Every Town & Country features an extended wheelbase for increased comfort and room
- Passenger-side and driver-side sliding doors
- Four-wheel-disc antilock brakes
- Easy Out® Roller Seats
- Four-speed electronic automatic transaxle
- Child-protection sliding door locks
- Comfort-Fit Seat Belt System
- Power windows, rear quarter vents and door locks
- Next Generation multistage driver and front-passenger air bags*
- Air conditioning
- User ready child seat lower anchors and top tethers – LATCH system

*Certified to the Federal Regulations that allow less forceful front air bags. Always use seat belts. Children 12 and under should always be in a backseat correctly using an infant or child restraint system or a seat belt that is right for their age and size.

Town & Country LX offers outstanding versatility with its extended wheelbase. More room. More refinement. LX has the available features to satisfy your needs, while respecting your budget. The luxurious and very versatile LX is furnished with all the expected standard features — power front and rear quarter vent windows, foldaway power heated mirrors, power door locks and seven-passenger seating with rear three-passenger bench seat. Plus a diversity of options that let you personalize the balance of luxury that's perfect for you: all-wheel drive, power sliding door, power liftgate, movable center console with power outlet, and 50/50 split-bench rear seats.

New available supplemental front-seat side air bags* provide additional side-impact protection.



Four-wheel disc antilock brakes, standard on all Town & Country models, help prevent wheel lockup and improve steering control during hard braking.



Properly secure all cargo.

Town & Country LX cloth interior in Taupe



New available rear cargo organizer adds functionality and versatility to the area behind the rear seats.

(Late availability.)



Properly secure all cargo.

VOYAGER LX



A close-at-hand storage drawer under the front passenger seat helps to keep valuables out of sight.

Value at its best! For those who desire a standard-wheelbase minivan, Voyager LX is the Chrysler model of choice. It's ideally equipped with desirable extra touches, such as standard air conditioning, six-speaker sound system, speed control, power windows and door locks, driver and passenger-side sliding doors, and body color bumpers. Option choices include load leveling suspension for a comfortable ride, intermediate Quad Command roller bucket seats, passenger-side power sliding door, eight-way power driver's seat, supplemental side-impact air bags* for driver and front passenger, and AM/FM stereo radio with cassette player and four-disc in-dash CD changer.

*Always use seat belts. Children 12 and under should always be in a backseat correctly using an infant or child restraint system or a seat belt that is right for their age and size.



Voyager LX in Bright Silver Metallic



Voyager LX cloth interior in Navy Blue



Front brake rotors have greater mass and new calipers are nearly 20-percent larger than previous models for enhanced braking performance.

Chrysler's premium quality woofers, tweeters and full-range speakers, are a perfect complement to your minivan's quiet interior.



SELECT STANDARD FEATURES

- Every Voyager features a versatile standard wheelbase
- Driver and passenger-side sliding doors
- User-ready child seat lower anchors and top tethers—LATCH system
- Fully independent front suspension with MacPherson struts and monoleaf rear springs
- Front and rear 12V DC power outlets
- Tinted glass on all windows
- Child-protection sliding door locks
- Next Generation multistage driver and front-passenger air bags*
- Air conditioning
- Brake-Park Interlock

*Certified to the Federal Regulations that allow less forceful front air bags. Always use seat belts. Children 12 and under should always be in a backseat correctly using an infant or child restraint system or a seat belt that is right for their age and size.

Chrysler Voyager delivers all of the advantages of a minivan at a superb value.

It's well-equipped, versatile and eager to satisfy the requirements of today's busy, on-the-go families. Mile after mile, you'll value Voyager's precision steering, ride poise, and ultra quietness. For extra passing, add the available redesigned 3.3-liter V6 engine that delivers an aggressive 180 horsepower rating.



Now this is fun! New available Mopar Rear Seat Video™ lets rear-seat passengers enjoy their favorite movies or video games on trips or short treks.

CUSTOMER ONE CARE™

At DaimlerChrysler Corporation, our commitment to complete customer satisfaction is evident in every car and minivan we sell. Long after a vehicle is driven away from the showroom, we will be there to ensure that our customers remain pleased with every new-vehicle purchase. To prove this commitment, all Chrysler vehicles are covered by the 3/36 Customer One Care Plan,* which includes a 3-year/36,000-mile (whichever comes first) Bumper-to-Bumper Limited Warranty† and Roadside Assistance‡ for 3 years or 36,000 miles. Roadside Assistance provides 24-hour, 7-day-a-week Emergency Road Service, contacted by a nationwide toll-free number. A 5-year or 100,000-mile Outer-Panel Rust-Through Limited Warranty covers the cost of all parts and labor needed to repair exterior sheet metal panels if perforated by corrosion. The 3/36 Customer One Care Plan stays with the vehicle, transferring automatically to subsequent owners at no cost during the warranty period.

*See your dealer for additional details and a copy of this limited warranty. †Covers the complete vehicle against defects in materials and workmanship. Excludes wiper blades, clutch disc, brake pads, linings, rotors and drums, normal maintenance items (these items are covered against defects for 12 months or 12,000 miles, whichever comes first) and tires (covered by their own manufacturer's warranty).

‡Roadside Assistance services are provided by Cross Country Motor Club, Inc. (In California, Cross Country Motor Club of California, Inc.)

LEASING

Leasing is a popular way to finance a new vehicle and the Gold Key Advantage® products offered by Chrysler Financial Company L.L.C. have the flexibility to fit your vehicle choice and your lifestyle. Gold Key Lease® payments are typically lower and for a shorter term than conventional financing. At lease end, you can: 1) turn the vehicle in and lease a new one; 2) buy the vehicle and keep it; 3) buy the vehicle and sell it for a possible profit. If the idea of driving the vehicle you want and paying less sounds great, ask your dealer about Gold Key Lease. Gold Key Plus® is a great alternative to leasing for customers who want low payments and pride of vehicle ownership — Gold Key Plus offers both. Decide how long the vehicle will be driven and the trade-in value is guaranteed (less excess mileage and wear and tear). Ask your dealer for complete details. Commercial Finance Options (CFO) offers several finance and lease options to small and midsize businesses, municipalities and small fleet operators. Gold Key Advantage products include a full range of automotive financing available through Chrysler Financial, providing flexible payment plans and finance products for qualified buyers. Many of these plans can be customized to fit your particular budget and make your new vehicle even more affordable. Ask your salesperson for details about any of the above plans.

Chrysler Financial Company L.L.C. programs are offered subject to availability and state and local laws.

DAIMLERCHRYSLER SERVICE CONTRACTS

Additional protection for owners is available through optional DaimlerChrysler Service Contracts. These service plans are available in a variety of time and mileage combinations to meet your driving needs. Ask your dealer for more information or call 1-800-442-2666.

All product illustrations, specifications and competitive comparisons are based upon current information at the time of publication approval. Although descriptions are believed correct, complete accuracy cannot be guaranteed. DaimlerChrysler Corporation reserves the right to make changes at any time, without notice or obligation, in prices, specifications, equipment, colors and materials, and to change or discontinue models. Some of the equipment shown or described throughout this catalog is available at extra cost. See your dealer for the latest information.

Mopar, Hemi, Sentry Key, Customer One Care, Ultrahide, Gold Key Advantage, Gold Key Lease and Gold Key Plus are trademarks of DaimlerChrysler Corporation. HomeLink is a registered trademark owned by Johnson Controls, Inc. Infinity, Infinity Spatial Imaging and Infinity Acoustic 10 are trademarks of Infinity Systems, Inc. CATIA is a registered trademark of Dassault Systems. Preferred Suede is a registered trademark of Milliken & Company.

Always use seat belts. Remember a backseat is the safest place for children.

**FOR MORE INFORMATION ON PRODUCTS OR LEASING:
1-800-CHRYSLER OR www.chryslerfinancial.com
www.chrysler.com**

EXTERIOR COLORS

An attractive selection of contemporary colors and fabrics is available to complement the 2001 Chrysler model lineup. Beneath each of the samples are the numerals, keyed to the Legend below, that indicate which vehicles are available in that color or fabric. Also, be sure to see your dealer for an extensive selection of Chrysler Accessories from Mopar that will add even more comfort and convenience to your Chrysler model choice.

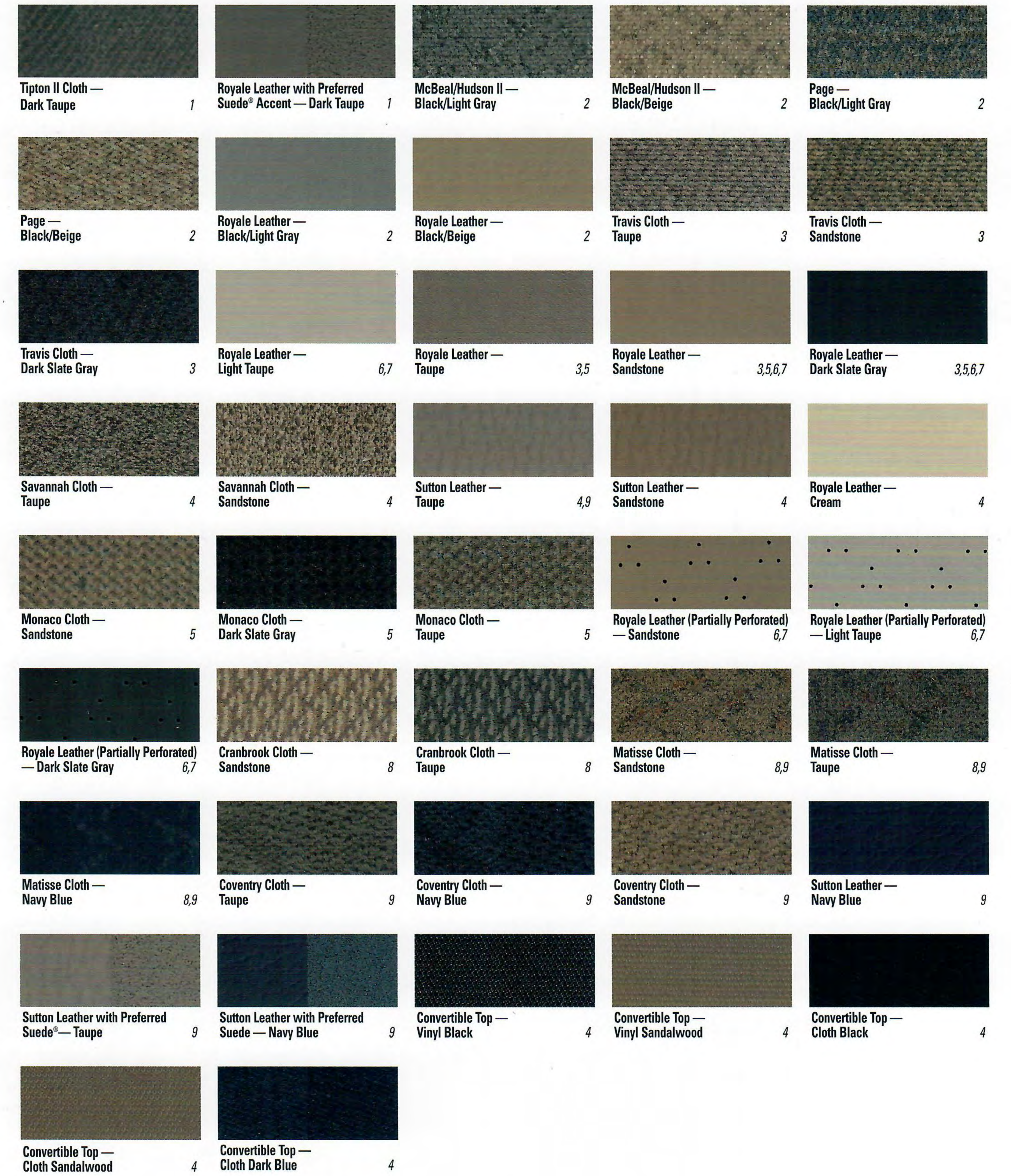
LEGEND:

- | | |
|-------------------------|--------------------|
| 1 - PT Cruiser | 6 - Chrysler 300M |
| 2 - Sebring Coupe | 7 - Chrysler LHS |
| 3 - Sebring Sedan | 8 - Voyager |
| 4 - Sebring Convertible | 9 - Town & Country |
| 5 - Concorde | |

All Chrysler vehicles feature a Clear Coat finish.



INTERIOR AND CONVERTIBLE TOP FABRICS



Leathers shown are for leather-trimmed seats.

If you would like to discuss vehicle details or pricing with a knowledgeable advisor before visiting your dealer, call 1-800-CHRYSLER or visit our Web site at www.chrysler.com.

CHRYSLER



The New Site For Car Brochures



DEZO'S GARAGE

Form No. 74-383-2148

9/00 (600M)

Litho in USA