



2004 Honda  
CIVIC SEDAN & HYBRID





Practicality and fun were never  
on such good terms as with the

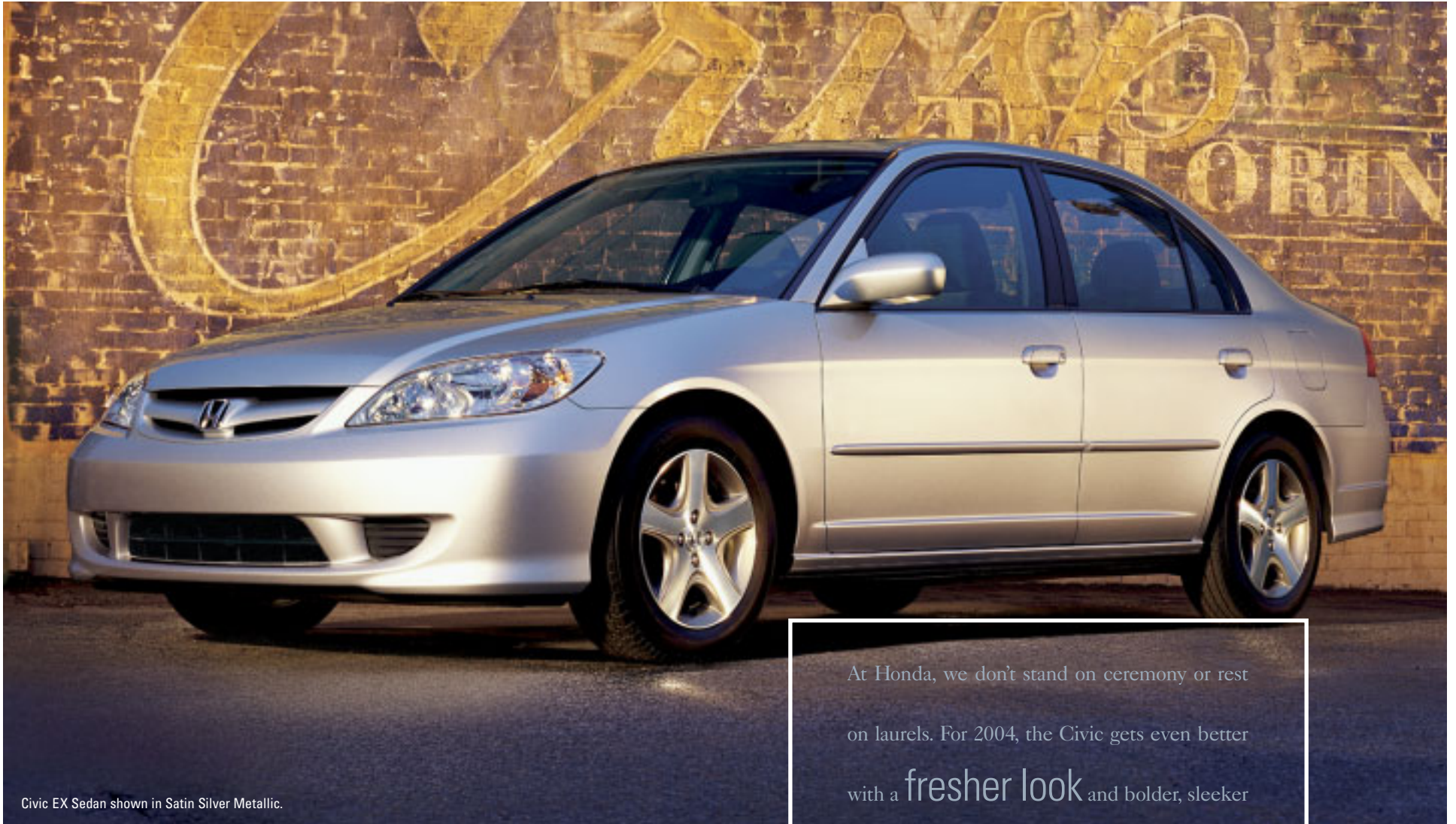
Civic Sedan and Hybrid.

**Great to drive.** Easy

to live with. So it's no wonder the Civic is always  
winning new legions of fans.







Civic EX Sedan shown in Satin Silver Metallic.

At Honda, we don't stand on ceremony or rest on laurels. For 2004, the Civic gets even better with a **fresher look** and bolder, sleeker

styling. Plus, new features make this Civic yet



an even greater

value. One thing does stay the same, however.

That's our legendary Honda craftsmanship.



**We think it's a smart choice too.** The Honda Civic has long been popular with drivers, the automotive enthusiast press and organizations like IntelliChoice. After their usual exhaustive testing and evaluation that included every competitor on the market, IntelliChoice named the Civic Sedan a Best Overall Value of the Year Award winner for 2003! And television's *MotorWeek* bestowed their Drivers' Choice Award on the Civic Hybrid as the Best Eco-Friendly vehicle.



## DX *Civic DX Sedan*

- 115-hp, 16-valve ULEV engine • 4-wheel independent suspension • Power rack-and-pinion steering • 5-speed manual transmission • Available 4-speed automatic transmission
- Dual-stage front airbags • Available front side airbags • Fold-down rear seatbacks
- AM/FM audio system with 4 speakers • Immobilizer Theft-Deterrent System



## LX *Civic LX Sedan*

- Adds to or replaces DX features:
- Front and rear stabilizer bars • 15-inch wheels • Remote entry system • Air conditioning with air-filtration system • Power windows, mirrors and door locks • Cruise control • AM/FM/CD audio system w/anti-theft protection • Floor mats
  - Center console with armrest and storage • Driver's seat with manual height adjustment



## EX *Civic EX Sedan*

- Adds to or replaces LX features:
- 127-hp, 16-valve VTEC® engine • Anti-lock braking system (ABS) • 15-inch alloy wheels • Power moonroof with tilt feature • Variable intermittent windshield wipers • Illuminated ignition switch • Rear beverage holder



## Hybrid *Civic Hybrid*

- Adds to or replaces LX features:
- 93-hp, 1.3-liter VTEC engine with Integrated Motor Assist (IMA™) system • Available continuously variable transmission (CVT) • Anti-lock braking system (ABS) • Lightweight 14-inch alloy wheels • Front side airbags • Automatic climate control with air filtration • Rear decklid spoiler







Civic EX Sedan shown in Radiant Ruby Pearl.

Officially, the Civic is the perfect vehicle for every day. But between us, it's built to be



in permanent weekend mode. You'll enjoy its spicy performance almost anywhere there's a curve to be savored. And between the fun drives, you can remind yourself it's practical.



Civic EX Sedan shown in Satin Silver Metallic.



Civic EX interior shown in Gray with available front side airbags.

We like to think of the Civic's interior as a choice  
**attraction** to be shared with friends.

There's plenty of room for you and four other  
people, lots of places to put the things you carry  
and so many comfortable touches that everyone



will want to come along  
and ride with you again.





The cockpit-like interior rewards you for being smart. In addition to **feeling good**, you'll feel more secure with the standard Immobilizer Theft-Deterrent System. LX and EX models also come with a remote entry system that will let you unlock the doors from up to 50 feet away.

**Practical? Practically hedonistic.** Some cars in the Civic's class aren't exactly appealing inside. But with a Civic, you don't have to pay a penalty for being smart with your money. The EX, for instance, features a **power moonroof** with tilt feature. LX and EX models are equipped with **power windows** with an auto-down feature on the driver's window. To really chill the competition, the LX and EX models feature standard air conditioning with air filtration.

**Seek and you shall find your station in life.** The Civic knows how to carry a tune. Actually lots of them, thanks to the standard audio systems. The DX model features an AM/FM audio system with four speakers. The LX and EX models let you bring your own music with the **AM/FM/CD** 4-speaker system. To help you relax on long drives, LX and EX models have a standard **cruise control** feature with steering wheel-mounted controls.







Civic LX Sedan shown in Shoreline Mist Metallic.

The picture of the racecar isn't some wild aspirational icon. Honda has a racing heritage

that turns other makers green with envy. Civic is a direct beneficiary. It slices through corners with

**surefooted precision** and

makes curvy roads something to look forward to. You see, performance runs in the family.

**Lively handling.** Giving this Civic a terrific affinity for the curves is a MacPherson strut front suspension as well as a **double wishbone** rear setup. This is complemented by a precise, power-assisted **rack-and-pinion** steering system that helps with those tight spots and provides that all-important road feel. The LX and EX models add front and rear stabilizer bars for an even greater level of handling.



Civic EX Sedan shown in Eternal Blue Pearl.

To some people, shifting is a chore. Which is why the Civic is available with a smooth, 4-speed automatic transmission.

To others who think shifting should be part of the entertainment system, the Civic has a slick-shifting 5-speed manual that gives those drivers good reason to go manual.



**Our engineers learn the fast way.** Honda has a long, distinguished heritage of racing success on the world's most demanding circuits. We've collected over **70 Grand Prix victories** in Formula One and 65 wins in CART open-wheel racing, and we expect to be just as successful with our new IRL effort. While it certainly helps us pioneer new technologies, we believe racing has an even greater benefit for our engineers. By learning to meet challenges under the pressure of competition, they're better able to create smart, innovative designs for our production vehicles.

With the 115-hp output of the DX and LX engine, there's plenty of performance on hand to keep you ahead of the traffic pack. To put the traffic quickly behind you, there's the **127-hp VTEC powerplant** of the EX. Either way, you'll go with legendary Honda reliability and durability on your side.





The Civic Sedan benefits greatly from Honda's **safety leadership**. Its advanced features include a standard dual-stage, dual-threshold front airbag system\* (SRS), 3-point seat belts for all seating positions and an automatic tensioning system for the front seat belts. The Lower Anchors and Tethers for Children (LATCH) system makes it easier

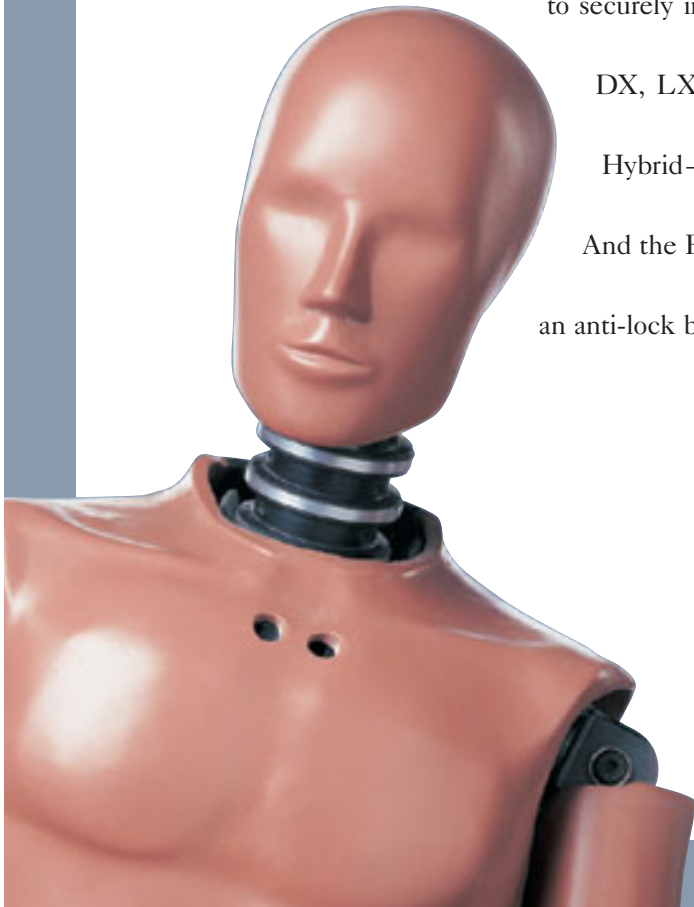
to securely install compatible child seats. Available on

DX, LX and EX models—and standard on the

Hybrid—is a **front side airbag** system.

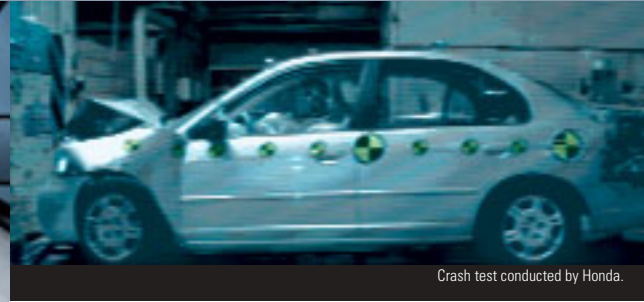
And the EX and Hybrid models are equipped with

an anti-lock braking system (ABS).



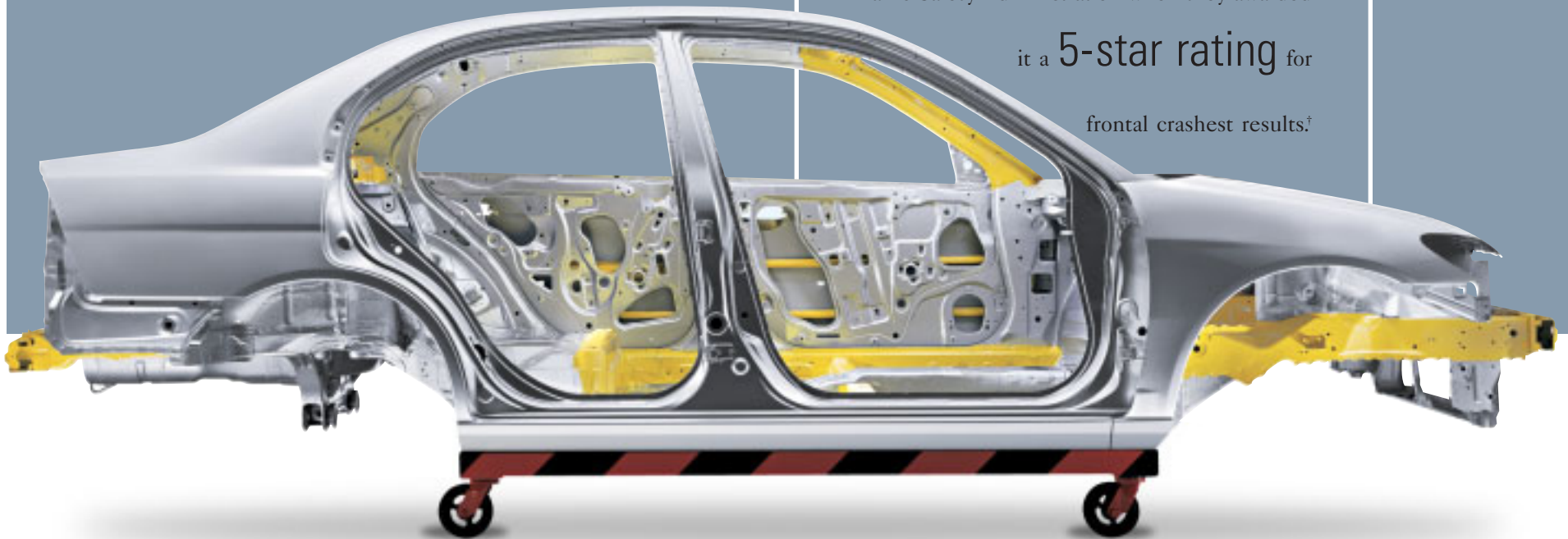
**Honda advances safety** technology in some of the world's most sophisticated labs, like the Honda R&D center in Tochigi, Japan. The first indoor all-directional crash-test laboratory in the world, it allows engineers to crash-test vehicles at a variety of speeds and impact angles. As a result of our **emphasis on safety**, five Honda models have received quadruple 5-star crash-test ratings from the NHTSA to date.<sup>2</sup> No other brand tested has more.

\*Honda reminds you and your passengers to always buckle up.



Crash test conducted by Honda.

The Civic's chassis features a rigid safety cell and front and rear crush zones. This hidden strength became quite apparent to the National Highway Traffic Safety Administration when they awarded it a **5-star rating** for frontal crash test results.†



†NHTSA frontal crash test conducted March 2001.



51 mpg

Honda's single-minded pursuit of emission reduction and fuel economy inevitably produced one of the most efficient vehicles around—the Civic Hybrid.

With impressive fuel economy of up to 51mpg<sup>3,4,5</sup> you save money, the planet conserves resources and the air is just a little cleaner.



In 1975, the astonishingly efficient Civic CVCC led the way to smarter cars.



In 2004, the revolutionary Civic Hybrid is reinventing what smart is all about.



Civic Hybrid shown in Shoreline Mist Metallic.



Our engineers know that technology can make almost anything possible. The Civic Hybrid will reward your common sense and desire for a sophisticated, responsible vehicle with an **amenity-rich** cabin and a host of standard features. While this may be unusual for some, it's standard operating procedure for Honda.



The Civic Hybrid is loaded with great features and a level of comfort that lets you know you're being well looked after—even as this advanced car is saving fuel. With the batteries tucked behind the rear seats, there's still 10.1 cubic feet of trunk space.

**Conveniences that reward your good sense.** There's no shortage of convenience equipment in the Civic Hybrid. Standard items include power windows, mirrors and door locks, as well as an **automatic climate control system** with air filtration. Also standard is an **AM/FM/CD audio system** with four speakers, plus an adjustable steering column and a theft-deterrent system.

**Watch yourself save gas.** Standard features in the Civic Hybrid include **cruise control** with steering wheel-mounted buttons. Also included is the **trip computer** that, among other things, lets the driver keep track of the outstanding fuel economy. Other standard features include front beverage holders, a center console armrest with storage, and rear-seat heater ducts.

# FAQS

**WHAT EXACTLY IS A HYBRID POWERTRAIN?** In the Civic Hybrid, a super-efficient 1.3-liter gasoline engine is coupled with a lightweight, high-output electric motor that provides extra power when needed, such as during acceleration. The powertrain is called the Integrated Motor Assist™ (IMA) System. The entire process is completely seamless, automatic and invisible to the driver.

**I NEVER HAVE TO PLUG IT IN, RIGHT?** That's correct—never. The charging system is completely self-sufficient so the powertrain automatically recharges the onboard batteries while you're driving. Just drive the Hybrid like you would a conventional car and save on fuel bills.

**IS THERE ANYTHING SPECIAL I HAVE TO DO?** You just have to love saving money and getting terrific gas mileage.<sup>3</sup> And when it's time for maintenance or repairs, simply take your Civic Hybrid in to your local Honda dealer—or any Honda dealer—for expert, experienced hybrid-vehicle service.



**Starting** the Civic Hybrid's engine is normally done by the **Integrated Motor Assist**. If the IMA battery-pack charge is low, a separate 12-volt battery and starter motor are used.



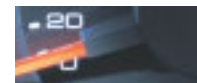
**Acceleration** is strong and responsive, as the **IMA** adds its power to the output of the **gasoline engine**. The IMA assist indicator lights to show current flow from the batteries.



**Cruising** at a steady speed, the Civic Hybrid's low-emission, fuel-efficient<sup>3</sup> **1.3-liter VTEC** engine works by itself. And as the charge indicator shows, the batteries receive some current.



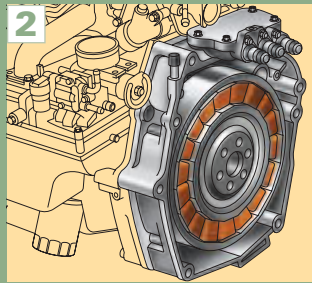
**Braking** is regenerative for the IMA battery pack, tapping into the Civic's kinetic energy. Here, the Civic Hybrid's electric motor automatically becomes a highly effective **generator**.



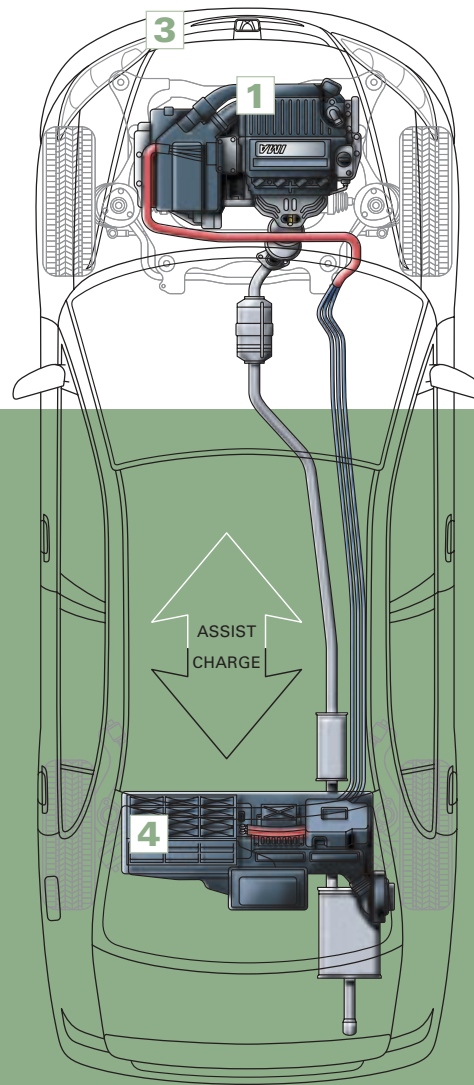
**At a stop**, the engine cuts off automatically under most conditions to reduce fuel use and emissions, thanks to the **idle-stop feature**. It restarts itself when you're ready to go.



**1** The Hybrid's main power source is a 1.3-liter, 4-cylinder gasoline engine. Thanks to such features as VTEC, Dual-Point Sequential Ignition (i-DSI) and truly ingenious friction-reducing innovations, this engine yields exceptional fuel mileage, low emission levels and excellent performance. In other words, like most Honda engines, it's a model of efficiency and power.



**2** What makes the Hybrid a hybrid vehicle is the addition of a smart, ultra-thin brushless DC motor to the conventional gasoline engine and drivetrain. This permanent magnet motor assists the engine as needed—like when you're accelerating from a stoplight. By adding its power to the gasoline engine, torque output is increased by a whopping 66% at 1000 rpm.



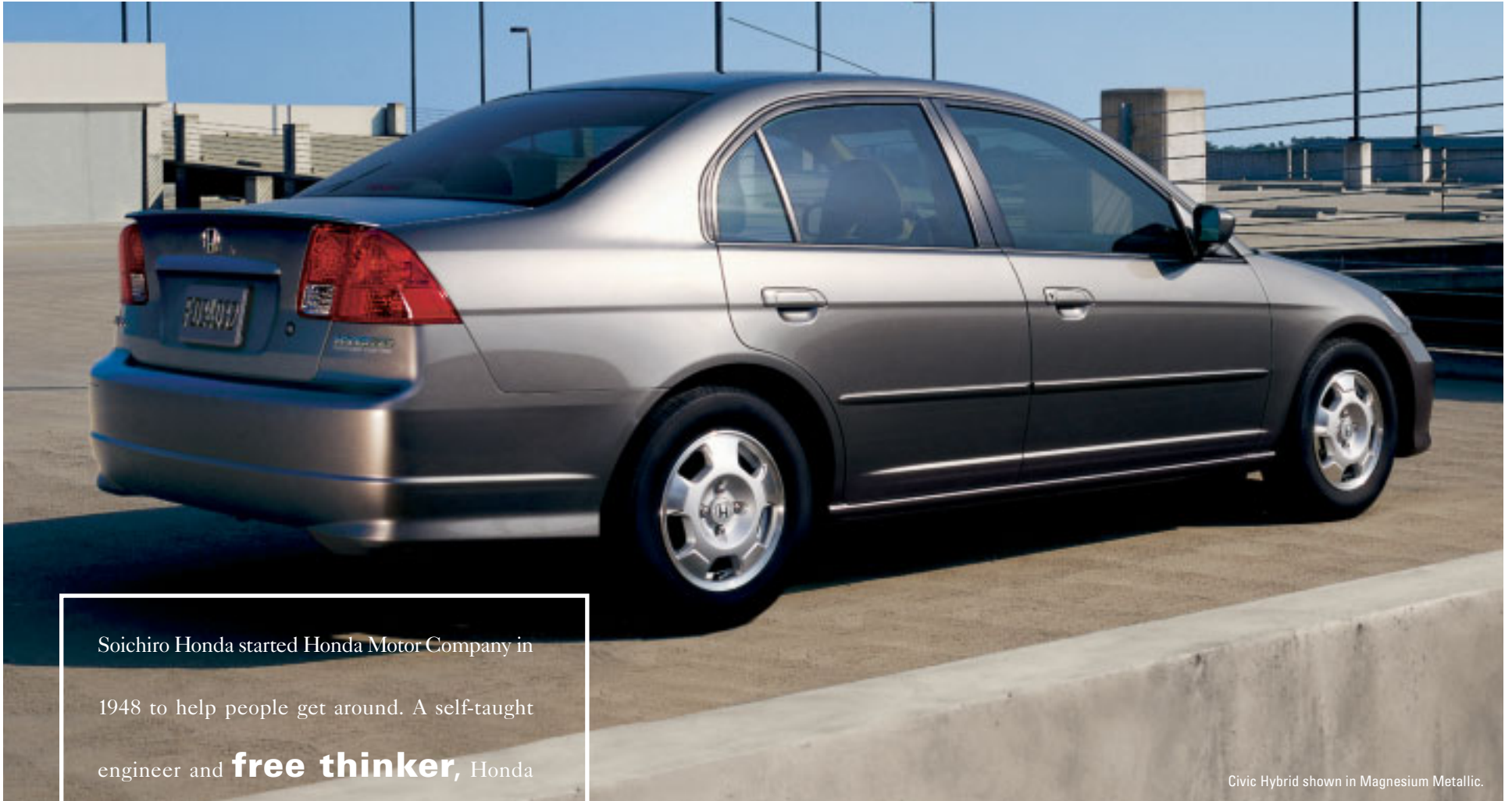
**3** The combination of the gasoline and electric power sources produces a lively 93 horsepower. Combined with either of two transmissions, the Civic Hybrid powerplant can deliver a range of up to 650 miles<sup>3,4,5</sup> between fill-ups. Since it was first introduced in the Insight, the Honda IMA System has proven itself to be durable, reliable and efficient.

**4** Power for the Hybrid's electric motor comes from the nickel-metal hydride (Ni-MH) battery pack located behind the rear seat. It's only about eight inches thick, so there's still a great deal of cargo room in the trunk. An 8-year/80,000-mile limited battery warranty helps provide assurance of long life.<sup>6</sup>

**5** Need more info? Log on to [civichybrid.honda.com](http://civichybrid.honda.com) for more details about Civic Hybrid technology.

The Hybrid is equipped with a standard slick-shifting 5-speed manual transmission that features a low-effort clutch to take some of the work out of shifting for yourself. If you prefer to let the car do your shifting for you, a **continuously variable transmission (CVT)** is available. With this transmission, the Hybrid achieves an impressive EPA city mileage rating of 48 mpg.<sup>7</sup>





Civic Hybrid shown in Magnesium Metallic.

Soichiro Honda started Honda Motor Company in 1948 to help people get around. A self-taught engineer and **free thinker**, Honda

challenged the status quo in following his passion for new ideas and driving fun.

It's a spirit that lives today in every car and truck we build.



**We've always been clear thinkers.** Since our pioneering stratified-charge CVCC engines of the 1970s, Honda has led the way in Earth-friendlier vehicles. Today, every Honda meets or surpasses Low-Emission-Vehicle (LEV) standards. Some are even Super-Ultra-Low-Emission Vehicles (SULEV). The EPA calls our natural-gas-fueled Civic GX the **world's cleanest-burning** internal-combustion vehicle.<sup>5</sup> Our Insight was the first gas-electric hybrid sold in the U.S., and only Honda offers two hybrid models. Now, our zero-emission FCX fuel-cell car is the first ever certified for commercial use in the U.S. And the Union of Concerned Scientists says, "Honda is the cleanest car company by a large margin."<sup>6</sup>







Civic EX Sedan shown in Nighthawk Black Pearl.

# Dealer-Installed Accessory Packages



**EX Sport Package.** This package includes a sporty rear wing spoiler, fog lights for enhanced visibility and a chrome exhaust finisher.



**LX Convenience Package.** This package provides alloy wheels, a handy trunk tray and splash guards to ward off road debris.

Accessory packages and individual accessories will be covered by the **new-vehicle limited warranty**<sup>9</sup> if installed at the time you purchase the vehicle. See your dealer for details.



**Just ask.** At Honda, support and assistance are always at the ready. Your dealer's team of trained technicians is there to help keep your Honda car or truck in superb shape. Any Honda accessories installed at the time you buy your vehicle are covered under the 3-year/ 36,000-mile limited warranty.<sup>7</sup> And if you ever desire more information or assistance with our products, feel free to give us a call at 1-800-33-Honda.

**HONDA** Whether you buy or  
Financial Services lease a Honda vehicle,  
**Honda Financial Services** can assist you  
with the process. Ask your dealer which lease  
or purchase plan best suits your needs.

**HONDA** **Care**™ is a highly  
affordable, comprehensive  
vehicle and travel protection  
plan that is backed by Honda reliability, service  
and parts. See your dealer for details.



Accord Sedan



S2000



Accord Coupe



Civic Coupe



Civic Si



Insight



Element



CR-V



Pilot



Odyssey



## 2004 Civic Sedan Specifications and Features

Engineering	DX	LX	EX
Engine Type	In-Line 4-Cylinder	In-Line 4-Cylinder	In-Line 4-Cylinder
Engine Block/Cylinder Head	Aluminum-Alloy	Aluminum-Alloy	Aluminum-Alloy
Displacement (cc)	1668	1668	1668
Horsepower @ rpm (SAE net)	115 @ 6100	115 @ 6100	127 @ 6300
Torque (lb.-ft. @ rpm)	110 @ 4500	110 @ 4500	114 @ 4800
Compression Ratio	9.5:1	9.5:1	9.9:1
Valve Train	16-Valve SOHC	16-Valve SOHC	16-Valve SOHC VTEC®
Multi-Point Fuel Injection	•	•	•
CARB Emissions Rating	ULEV	ULEV	ULEV
Direct Ignition System with Immobilizer	•	•	•
110,000-Mile Tune-Up Interval*	•	•	•
Transmission			
5-Speed Manual Transmission	•	•	•
4-Speed Automatic Transmission (available)	•	•	•
Body/Suspension/Chassis			
Unit-Body Construction	•	•	•
Control-Link MacPherson Strut Front Suspension	•	•	•
Reactive-Link Double Wishbone Rear Suspension	•	•	•
Stabilizer Bar (mm, front/rear)		15.9/12.0	15.9/12.0
Power-Assisted Rack-and-Pinion Steering	•	•	•
Turning Diameter, Curb-to-Curb (ft.)	34.1	34.1	34.1
Power-Assisted Ventilated Front Disc/Rear Drum Brakes (in., front/rear)	10.3/7.8	10.3/7.8	10.3/7.8
Anti-Lock Braking System (ABS)			•
Wheels	14" with Full Covers	15" with Full Covers	15" Alloy
All-Season Tires	P185/70 R14 87S	P195/60 R15 87H	P195/60 R15 87H
Compact Spare Tire	•	•	•
Interior Measurements			
Headroom (in., front/rear)	39.8/37.2	39.8/37.2	38.0/36.3
Legroom (in., front/rear)	42.2/36.0	42.2/36.0	42.2/36.0
Shoulder Room (in., front/rear)	52.6/52.0	52.6/52.0	52.6/52.0
Hiproom (in., front/rear)	51.2/49.8	51.2/49.8	51.2/49.8
Cargo Volume (cu. ft.)	12.9	12.9	12.9
Passenger Volume (cu. ft.)	91.4	91.4	88.1
Seating Capacity	5	5	5
Exterior Measurements			
Wheelbase (in.)	103.1	103.1	103.1
Length (in.)	175.4	175.4	175.4
Height (in.)	56.7	56.7	56.7
Width (in.)	67.5	67.5	67.5
Track (in., front/rear)	57.8/57.8	57.8/57.8	57.8/57.8
Curb Weight (lbs., MT/AT)	2449/2514	2560/2606	2612/2668
Exterior Features			
Power Moonroof with Tilt Feature			•
Integrated Rear-Window Antenna	•	•	•
Remote Entry System		•	•
Dual Manual Remote-Operated Mirrors	•		
Dual Power Mirrors		•	Body-Colored
2-Speed/Intermittent Windshield Wipers	•	•	
Variable Intermittent Windshield Wipers			•
Impact-Absorbing Body-Colored Bumpers	•	•	•
Body Side Molding	•	Body-Colored	Body-Colored
Multi-Reflector Halogen Headlights	•	•	•
Tinted Glass	•	•	•
Body-Colored Door Handles		•	•
Body-Colored Trunk Garnish	•	•	•

\*Does not apply to fluid and filter changes. See your owner's manual for details.

<sup>1</sup>Based on 2003 models. ©2003 *The Complete Car Cost Guide*,™ IntelliChoice, Inc., www.intellichoice.com. <sup>2</sup>National Highway Traffic Safety Administration crash-test results as of June 2003. <sup>3</sup>Based on 2004 EPA mileage estimates. Use for comparison purposes only. Actual mileage may vary. <sup>4</sup>Manual-transmission model only. <sup>5</sup>ULEV model only. AT-PZEV model mileage range will be lower. <sup>6</sup>Limited battery pack warranty may vary. Consult your warranty booklet. AT-PZEV model differs slightly due to emission standards. <sup>7</sup>ULEV model; 47 mpg for AT-PZEV model. <sup>8</sup>Tier 2 Bin 2 EPA certification as of June 2003. **<sup>9</sup>3-Year/36,000-Mile Limited Warranty:** Ordinary maintenance or adjustments, parts subject to normal wear and replacement, and certain items are excluded. See your Honda dealer for terms and conditions of this limited warranty. **Always use seat belts and appropriate child seats. Children are safest in the rear seat.** Specifications, features, illustrations and equipment shown in this brochure are based upon the latest available information at the time of printing. Although descriptions are believed to be correct, accuracy cannot be guaranteed. American Honda Motor Co., Inc., reserves the right to make changes at any time, without notice or obligation, in colors, specifications, accessories, materials and models. Some features mentioned herein are not available in all areas. See your Honda dealer for details. Some vehicles may be shown with optional equipment. Available = Optional. Honda, the H-mark symbol, Honda Care, i-VTEC and Real Time are trademarks of Honda Motor Co., Ltd. ©2003 American Honda Motor Co.

Comfort & Convenience	DX	LX	EX
Air Conditioning with Air-Filtration System	Accessory	•	•
Power Windows with Illuminated Auto-Down Driver's Window Switch		•	•
Power Door Locks		•	•
Cruise Control		•	•
Adjustable Steering Column	•	•	•
Beverage Holders	Front	Front with Lid and Rear	Front with Lid
Center Console with Armrest and Storage Compartment		•	•
Front Door-Pocket Storage Bins	•	•	•
Passenger-Side Seatback Pocket		•	•
Chrome Door-Handle Pulls		•	•
Remote Fuel Filler Door Release	•	•	•
Remote Trunk Release with Lock	•	•	•
Headlights-On Reminder	•	•	•
Driver's and Front Passenger's Vanity Mirrors	•	•	•
Map Lights		•	•
Rear-Seat Heater Ducts	•	•	•
Driver's Footrest		•	•
12-Volt Accessory Outlet	•	•	•
Rear Window Defroster with Timer	•	•	•
Cargo Area Light	•	•	•
Seating			
Driver's Seat with Manual Height Adjustment		•	•
Reclining Front Seatbacks	•	•	•
Adjustable Outboard Head Restraints	•	•	•
60/40 Split Fold-Down Rear Seatback with Lock	•	•	•
Audio Systems			
AM/FM Audio System with 4 Speakers and Clock	•		
AM/FM/CD Audio System with 4 Speakers and Clock		•	•
Instrumentation			
Backlit Instrument Panel		•	•
Tachometer		•	•
Digital Odometer and Digital Trip Meters (2)	•	•	•
Fuel and Coolant Temperature Gauges	•	•	•
Trunk-Open Indicator Light	•	•	•
Low-Fuel and Low-Oil-Pressure Indicator Lights	•	•	•
Maintenance Interval Indicator	•	•	•
Illuminated Ignition Switch			•
Safety			
3-Point Seat Belts at all Seating Positions	•	•	•
Front 3-Point Seat Belts with Automatic Tensioning System	•	•	•
Adjustable Front Seat Belt Anchors	•	•	•
Dual-Stage Front Airbags (SRS)	•	•	•
Front Side Airbags with Passenger-Side Occupant Position Detection System (OPDS)	Available	Available	Available
Side-Impact Door Beams	•	•	•
Lower Anchors and Tethers for Children (LATCH)	•	•	•
Child-Proof Rear Door Locks	•	•	•
Immobilizer Theft-Deterrent System	•	•	•
Emergency Trunk Opener	•	•	•
EPA Mileage Estimates <sup>7</sup> /Fuel Capacity			
5-Speed Manual (City/Highway)	32/38	32/38	32/37
4-Speed Automatic (City/Highway)	29/38	29/38	31/38
Fuel (gal.)	13.2	13.2	13.2
Required Fuel	Regular Unleaded	Regular Unleaded	Regular Unleaded

## 2004 Civic Hybrid Specifications and Features

Engineering	Hybrid (CVT)	Hybrid (MT)
Engine Type	In-Line 4-Cylinder	In-Line 4-Cylinder
Engine Block/Cylinder Head	Aluminum-Alloy	Aluminum-Alloy
Displacement (cc)	1339	1339
Horsepower @ rpm (SAE net/with IMA <sup>†</sup> )	85 @ 5700/93 @ 5700	85 @ 5700/93 @ 5700
Torque (lb.-ft. @ rpm/with IMA)	87 @ 3300/105 @ 3000	87 @ 3300/116 @ 1500
Compression Ratio	10.8:1	10.8:1
Valve Train	8-Valve SOHC VTEC <sup>®</sup>	8-Valve SOHC VTEC
Multi-Point Fuel Injection	•	•
Idle-Stop Feature	•	•
CARB Emissions Rating	ULEV or AT-PZEV <sup>†</sup>	ULEV or AT-PZEV <sup>†</sup>
Dual-Point Sequential (i-DSI) Lean-Burn Ignition System	with Immobilizer	with Immobilizer
110,000 Mile Tune-Up Interval*	•	•
Electric Motor/Generator		
Permanent Magnet Motor	•	•
Power Output	13.4 hp @ 4000 rpm	13.4 hp @ 2500-4000 rpm
Motor Width (mm)	60	60
Electric Power Storage		
Nickel Metal Hydride (Ni-MH) Battery	•	•
Output	144V (120 cells @ 1.2V)	144V (120 cells @ 1.2V)
Rated Capacity	6.0 Ah	6.0 Ah
Transmission		
5-Speed Manual Transmission		•
Continuously Variable Transmission (CVT)	•	
Body/Suspension/Chassis		
Unit-Body Construction	•	•
Control-Link MacPherson Strut Front Suspension	•	•
Reactive-Link Double Wishbone Rear Suspension	•	•
Stabilizer Bar (mm, front/rear)	25.4/13.0	25.4/13.0
Electric Power-Assisted Rack-and-Pinion Steering (EPS)	•	•
Turning Diameter, Curb-to-Curb (ft.)	34.8	34.8
Power-Assisted Ventilated Front Disc/ Rear Drum Brakes (in., front/rear)	10.3/8.7	10.3/8.7
Anti-Lock Braking System (ABS)	•	•
Electronic Brake Distribution System (EBD)	•	•
Wheels	14" Lightweight Alloy	14" Lightweight Alloy
Low-Rolling-Resistance All-Season Tires	P185/70 R14 87S	P185/70 R14 87S
Interior Measurements		
Headroom (in., front/rear)	39.8/37.2	39.8/37.2
Legroom (in., front/rear)	42.2/36.0	42.2/36.0
Shoulder Room (in., front/rear)	52.6/52.0	52.6/52.0
Hiproom (in., front/rear)	51.2/49.8	51.2/49.8
Cargo Volume (cu. ft.)	10.1	10.1
Passenger Volume (cu. ft.)	91.4	91.4
Seating Capacity	5	5
Exterior Measurements		
Wheelbase (in.)	103.1	103.1
Length (in.)	175.4	175.4
Height (in.)	56.3	56.3
Width (in.)	67.5	67.5
Track (in., front/rear)	57.9/57.9	57.9/57.9
Curb Weight (lbs., ULEV/AT-PZEV)	2736/2749	2675/2684
EPA Mileage Estimates <sup>†</sup> /Fuel Capacities		
5-Speed Manual (City/Highway) (ULEV)		46/51
CVT (City/Highway) (ULEV)	48/47	
5-Speed Manual (City/Highway) (AT-PZEV)		45/51
CVT (City/Highway) (AT-PZEV)	47/48	
Fuel (gal., ULEV/AT-PZEV)	13.2/11.9	13.2/11.9
Required Fuel	Regular Unleaded	Regular Unleaded

Exterior Features	Hybrid (CVT)	Hybrid (MT)
Body-Colored Dual Power Mirrors	•	•
Integrated Grille and Front Bumper	•	•
Impact-Absorbing Body-Colored Bumpers	•	•
Variable Intermittent Windshield Wipers	•	•
Rear Decklid Spoiler	•	•
Heat-Rejecting Green-Tinted Glass	•	•
Remote Entry System	•	•
Roof-Mounted Antenna	•	•
Alloy Wheels	•	•
Comfort and Convenience		
Automatic Climate Control with Air Filtration	•	•
Power Windows with Auto-Down Driver's Window	Illuminated Switch	Illuminated Switch
Power Door Locks	•	•
Cruise Control	•	•
Adjustable Steering Column	•	•
Headlights-On Reminder	•	•
Front Beverage Holders with Lid	•	•
Center Console with Armrest and Storage Compartment	•	•
Driver's and Front Passenger's Vanity Mirrors	•	•
Map Lights	•	•
Chrome Door-Handle Pulls	•	•
Front Door-Pocket Storage Bins	•	•
12-Volt Accessory Outlet	•	•
Driver's Footrest	•	•
Remote Fuel Filler Door Release	•	•
Remote Trunk Release with Lock	•	•
Rear-Seat Heater Ducts	•	•
Passenger-Side Seatback Pocket	•	•
Rear Window Defroster with Timer	•	•
Cargo Area Light	•	•
Seating		
Driver's Seat with Manual Height Adjustment	•	•
Reclining Front Seatbacks	•	•
Adjustable Outboard Head Restraints	•	•
Audio System		
AM/FM/CD Audio System w/4 Speakers and Clock	•	•
Instrumentation		
Blue-Lit Instrument Panel w/Electronic IMA Display	•	•
Tachometer	•	•
Idle-Stop Indicator Light	•	•
Economy Shift Indicator	•	•
Maintenance Interval Indicator	•	•
Digital Odometer and Digital Trip Meters (2)	•	•
Digital Fuel-Mileage Indicators	•	•
IMA Charge and Assist Indicators	•	•
Battery Charge Indicator	•	•
Illuminated Ignition Switch	•	•
Safety		
3-Point Seat Belts at all Seating Positions	•	•
Front 3-Point Seat Belts with Automatic Tensioning System	•	•
Adjustable Front Seat Belt Anchors	•	•
Dual-Stage Front Airbags (SRS)	•	•
Front Side Airbags with Passenger-Side Occupant Position Detection System (OPDS)	•	•
Side-Impact Door Beams	•	•
Lower Anchors and Tethers for Children (LATCH)	•	•
Child-Proof Rear Door Locks	•	•
Emergency Trunk Opener	•	•

<sup>†</sup>AT-PZEV (Advanced Technology Partial Zero-Emission Vehicle) as certified by CARB. AT-PZEV vehicles are SULEV-rated and have zero evaporative emissions. AT-PZEV models available in California and some Northeastern states.