

'05

Honda ▶ Pilot





confidence page 11

security page 13

It's a Honda. page 15

good looks page 3

volume page 4

purpose page 7

strength page 10

choices page 9

Why Pilot.

You've been paying attention. You've shopped around. So you may have noticed that Honda goes about things in a different way—a uniquely uncompromising way. When we introduced the Pilot, for instance, we changed what people thought about, and expected from, an SUV. Sure, it's got a rugged 4WD system, a 5-speed automatic, seating for up to eight and now 255 horses for 2005. But we didn't stop at do-it-all capability. We added advanced safety engineering, efficiency and great handling, too. Because we don't think you should have to give those up. Call it unique. Or exceptional. Or simply the Honda of SUVs.

good looks ▶ exterior styling

3

One look at the Pilot, and right away you get the idea it was built to please a **tough** crowd. Its muscular flanks and wide stance give it a commanding presence that echoes big capabilities, both on- and off-road. Beefy tires, roof rails on EX models and a new moonroof on EX models with leather promise outdoor fun. Let your gaze linger, and see how the Pilot's clean lines also hint at its quiet and comfortable nature at highway speeds. It's a shape that's more **classic** than trendy, and that delivers as much in the way of function as form. After all, every Honda is built to last—and rugged good looks never go out of style.



Pilot EX with Leather shown in Nighthawk Black Pearl.

volume ▶ interior

Ever wonder why so many of those hulking SUVs out there feel so cramped when you actually get inside them? We sure do. That's why stepping inside a Pilot is such a refreshingly **expansive** experience. With seating for up to eight, it's hard to run out of room. Finally, you can haul the whole team, or even take a family vacation with your extended family. And with theater-style seating, everyone will have a great view.

The Pilot is a **quick-change** artist, too. Its 60/40 split seats can fold flat in a flash, making room for whatever the day's to-do list demands. Slide in the sports gear, the unexpected garage-sale bookcase, or even a 4' x 6' sheet of plywood for a weekend project.* And all this utility won't compromise the Pilot's driver-centered sporty feel, with extras like an available moonroof and the EX model's 8-way power driver's seat.

*Honda reminds you to properly secure items stored in the cargo area.

A. 60/40 split seats

B. Second-row fold-down activity tray (EX)

C. Available leather-trimmed interior

D. Front and rear air-conditioning system



Pilot EX interior shown in Gray Leather with available Honda Satellite-Linked Navigation System.^{TM 1}



Locked and loaded. A covered storage well keeps smaller items hidden and stowed, and a handy 12-volt power outlet is close by. Fold down the second- and third-row seats, and the Pilot swallows 90.3 cu. ft. of cargo.²



More music to your ears. Most EX models now feature a 6-disc in-dash CD changer. So you can listen to hour after hour of music without having to swap discs. It's just the thing for big trips or the daily drive.

E. Plenty of storage options

F. 90.3 cu. ft. of cargo space²



Pilot EX interior shown in Gray Leather with available Honda Satellite-Linked Navigation System.^{TM1}



A place for everything.

The Pilot offers a multitude of storage solutions. Every door has a storage pocket. Beverage holders abound. The front armrest flips up to reveal a huge center console that holds 13 CD cases and hides a 12-volt power outlet and phone cradle.† In EX models, second-row passengers get a fold-down utility tray.



Nine beverage holders (EX)

Get the show on the road. The available factory-integrated DVD Entertainment System¹ on select EX models keeps rear passengers smiling as they enjoy a favorite movie, their own particular music selection or even a video game. Rear controls and handy audio/video inputs make it easy to enjoy just about any portable source you can think to bring along. The system is flexible, fun and technologically sophisticated. So it's good for the youngsters, or just the young at heart.

The fun's in the back. Not only do rear passengers get an available DVD Entertainment System, but they're also given command of their own temperature settings with the rear climate controls. A rear 12-volt outlet is there to power anything from laptops to cell phones and MP3 players, so the fun never has to end.



Available DVD Entertainment System¹



Image courtesy of Universal Studios.

We all love to be entertained. We're hard-wired to soak up a wide array of pleasing sights and melodic sounds. So the Pilot is equipped to handle the variety. The LX model comes with a 120-watt AM/FM/CD audio system with four speakers. The EX model ups the ante with a 155-watt, 7-speaker system with a **6-disc CD changer** that's new for 2005. With the available DVD Entertainment System, rear passengers can choose their own audio or video source, and listen at their own volume through **wireless headphones**. We've even included a remote control that makes using the system easier. It's an entertainment system versatile enough to keep everyone pleased—and to keep the peace.



†Drive responsibly. State laws prohibit distracted driving.



Pilot EX interior shown in Gray Leather with available Honda Satellite-Linked Navigation System.¹

Directions from a highly reliable source.

Available on select EX models, the Honda Satellite-Linked Navigation System¹ is the best and last excuse you'll ever need for not stopping for directions. Using signals from global positioning system (GPS) satellites and an onboard internal guidance system, it pinpoints your location virtually anywhere in the 48 contiguous U.S. states.* An 8.0-gigabyte DVD database holds maps of major metropolitan and rural areas, as well as 7 million points of interest. Zero in on a destination and the system guides you with clear voice prompts and a moving map display. It'll even track your path off-road with electronic "bread crumbs."



The path is clear.

System menus and maps are easy to see, thanks to the 6-inch touch-screen display.

purpose ▶ interior detail

You could say the Pilot driver takes a back seat to no one. Working from a **driver-focused** design, we equipped EX models with an 8-way power driver's seat. On EX models with the leather-trimmed interior, the driver also gets heated front seats and a restyled leather-wrapped steering wheel that puts audio controls right at hand. **Thoughtful ergonomics** extend to the placement of the shifter and climate controls, too. New for '05, a Tire Pressure Monitoring System (TPMS) monitors each tire, and will alert the driver of the specific tire with low air pressure. Behind the wheel of a Pilot, you'll feel in total control.

*Some roads unverified. See the navigation system owner's manual for more details on coverage.



Pilot EX shown in Redrock Pearl.



choices ▶ trim levels



Performance, versatility and legendary Honda reliability—these qualities make Pilot a perennial powerhouse in winning people over. In fact, it's won the large SUV category in *Car and Driver's* "5Best Trucks" competition in '02, '03 and yet again in '04.



Pilot LX ▼

- 255-hp, 3.5-liter VTEC® V-6 engine
- 5-speed automatic transmission
- Variable Torque Management® 4-wheel-drive system (VTM-4®)
- 4-wheel disc brakes with ABS
- Dual-stage, dual-threshold front airbags (SRS)
- Front side airbags
- Tire Pressure Monitoring System (TPMS)
- Seating for up to 8
- 60/40 split flat-folding 2nd- and 3rd-row bench seats
- AM/FM/CD audio system
- Remote entry system



Pilot EX ▼

Adds to or replaces LX features:

- AM/FM/6-disc in-dash CD changer/cassette audio system with 7 speakers, including subwoofer*
- Front and rear synchronized automatic climate control system
- Driver's seat with 8-way power adjustment
- 16-inch alloy wheels
- Roof rails
- Second-row fold-down activity tray
- Rear privacy glass
- HomeLink® remote system³

- Available leather option includes moonroof, leather-trimmed interior, leather-wrapped steering wheel, heated front seats and door mirrors, and Vehicle Stability Assist (VSA®)
- Available Honda Satellite-Linked Navigation System¹ with off-road tracking
- Available Honda DVD Entertainment System¹

*6-disc CD changer located beneath front driver's seat on models with Honda Satellite-Linked Navigation System.



Pilot EX with Leather shown in Steel Blue Metallic with accessory crossbars and towing package.

Engine > 3.5-liter, 255-hp aluminum-alloy V-6

Transmission > 5-speed automatic

Efficiency > Ultra-Low-Emission Vehicle (ULEV-2) rating

strength ▶ engine/transmission

10

We're not called Honda Motor Company for nothing. Like every Honda, the Pilot has at its heart a powerplant that's engineered for a blend of both power and efficiency. The 3.5-liter aluminum-alloy V-6 now cranks out **255 hp** and 250 lb.-ft. of torque for quick acceleration, authoritative highway cruising, and the ability to haul big loads—up to 4,500 lbs.⁴ New for '05 is a Drive-by-Wire Throttle System™ for smooth, precise control. The sophisticated engine also features **VTEC** (variable valve timing and lift electronic control) technology, Programmed Fuel Injection and a direct ignition system. And harnessing that power is a **5-speed automatic** transmission with Grade Logic Control that holds the best gear when traversing hilly terrain.

confidence ▶ handling/traction

[1] Rear Differential Unit

The heart of the rear differential unit is a system of two electromagnetic clutches that are electronically controlled by the VTM-4 ECU. When these clutches are not activated, the rear wheels behave as they do in a front-drive vehicle, providing more fuel economy. But when the clutches are energized and engaged by the ECU, up to 55% of the engine's power is diverted to the rear wheels so they can work with the front wheels to provide 4-wheel drive. The ECU seamlessly engages the system to help provide optimum traction at all times, whether driving on pavement, snow or dirt.

We believe even an SUV should be a joy to drive. The Pilot's rigid body structure and front strut and multi-link rear suspension provide excellent road feel, responding precisely to driver input. The ride is smooth and **compliant** as well, even if the going gets rough. And the Pilot's Variable Torque Management® (VTM-4®) system is always ready, automatically sending power to the rear wheels for extra traction and **control** on dirt, snow or rain-slicked roads. Add 4-wheel disc brakes and beefy P235/70 R16 tires, and the Pilot is ready to roll, no matter where you're rolling to.

[2] Center Propeller Shaft

The front differential powers the front wheels, and also powers the rear differential through the center propeller shaft, which has a special damper to reduce vibration. While this shaft will constantly transmit power to the back, the rear differential does not send it on to the rear wheels until signaled to do so by the VTM-4 ECU.

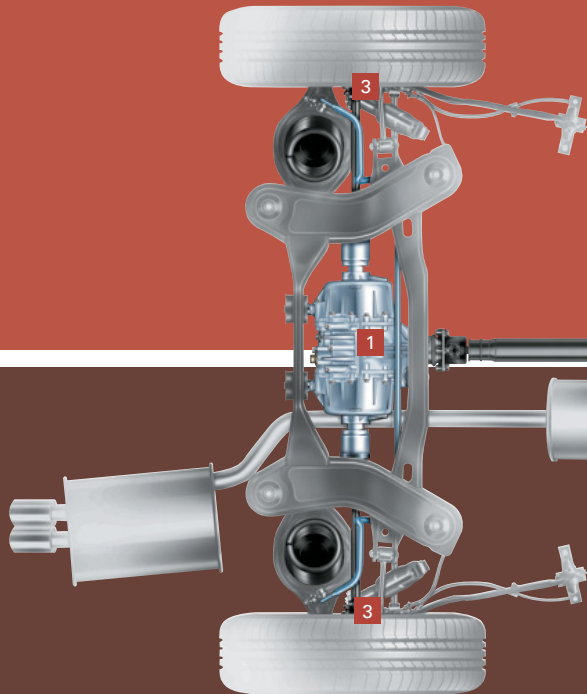
VTM-4 ECU

The VTM-4 ECU keeps track of the Pilot's traction. It processes signals sent from the wheel and engine sensors to check if front wheel slippage is impending. If it detects possible slippage, the ECU calculates how much power to send to the rear wheels to maintain traction and immediately signals the rear differential. Without any input from the driver, the system will automatically deliver 4-wheel drive when it's needed. When normal traction levels return, 4-wheel drive is automatically disengaged, so you use less fuel.

[4] Front Differential

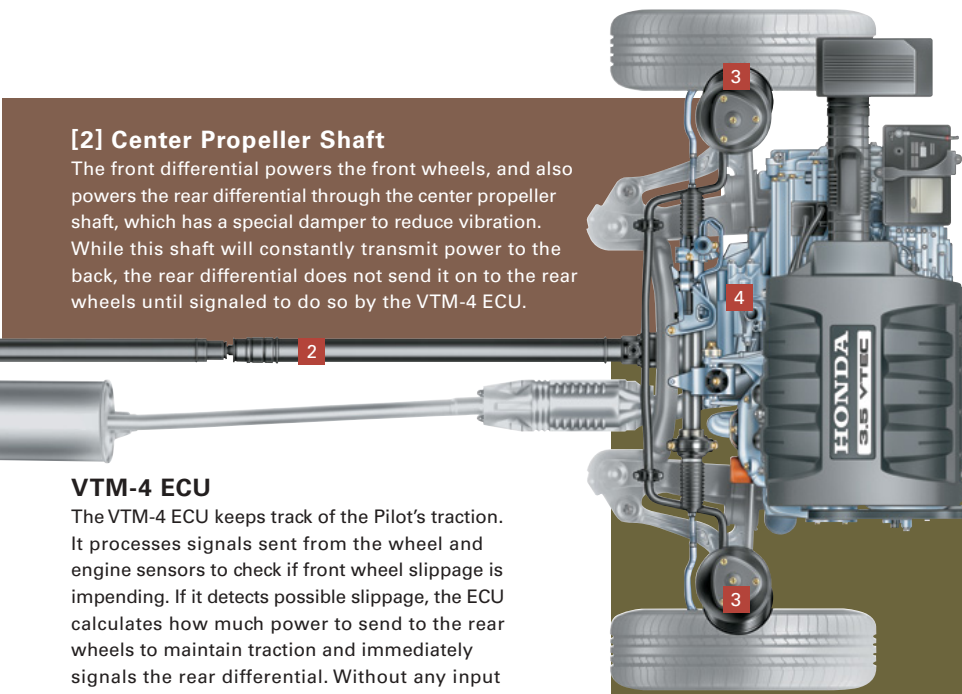
Under normal driving conditions, when extra traction from the rear wheels is not needed, all engine power is channeled through the transmission directly to the front wheels to maximize efficiency.

Lock in the traction. The Pilot's VTM-4 system operates automatically. But when you need to start off in extreme low-traction conditions such as when stopped in mud, on ice or in loose gravel, the thoughtful VTM-4 Lock® feature lets you manually lock the rear differential to help get you moving. And it can stay manually locked up to 18 mph.



[3] 4-Wheel-Drive System Sensors

A sensor array monitors each wheel, and provides a constant stream of information on road and vehicle conditions to the vehicle's ABS and engine ECUs. Based on this information, the VTM-4 ECU will send engine power to the rear wheels until wheel slip is eliminated.



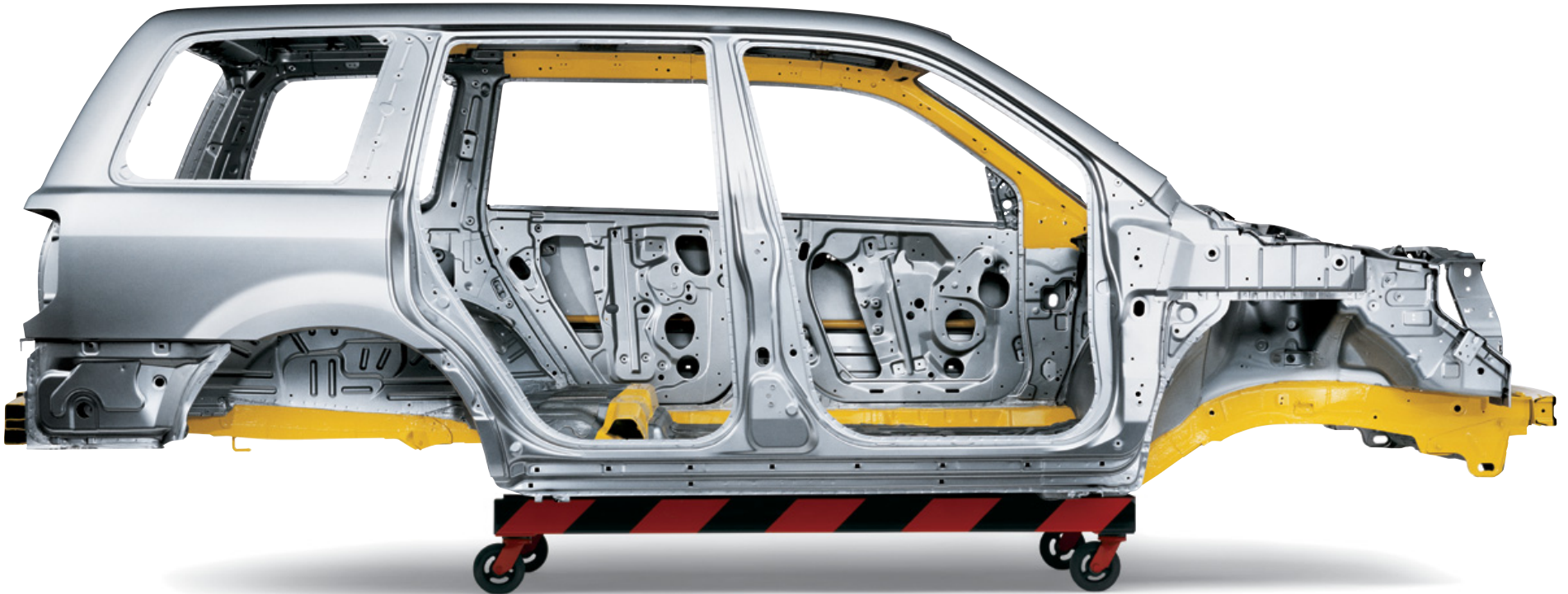


Pilot EX shown in Nighthawk Black Pearl.

security ▶ safety for everyone

Honda believes in **safety for everyone**, and we've been researching and implementing more and more sophisticated safety technologies for all our vehicles. We do our homework in some of the world's most advanced research and development facilities, both in the U.S. and abroad. Our R&D center in Tochigi, Japan, houses the world's first indoor all-directional crash-test facility. And our recently opened R&D facility in Ohio boasts the world's most advanced high-resolution crash

barrier. According to independent testing agencies, our efforts are getting results. For example, the National Highway Traffic Safety Administration (NHTSA) has given the Pilot a **5-star rating** in its frontal- and side-impact tests.* In fact, Honda has become the most prominent name among vehicles receiving the NHTSA's top ratings. No fewer than five 2004 Honda models have received 5-star ratings in both frontal- and side-impact crash testing. That's more models than any other brand.

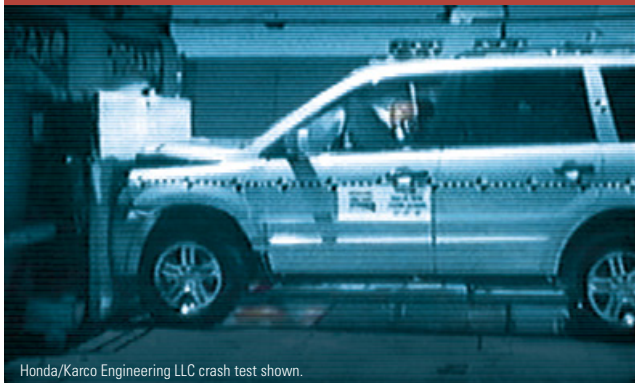


*National Highway Traffic Safety Administration frontal and side crash tests, June 2002.

1

Crash courses.

Honda's crash testing in real-world scenarios and the analysis of crash forces are a vital part of our understanding of how to build safer vehicles.



Honda/Karco Engineering LLC crash test shown.

3

Safer stops.

The anti-lock braking system (ABS) helps the driver retain directional control during hard braking. And the new brake assist feature on EX models with leather can help in emergency braking situations.

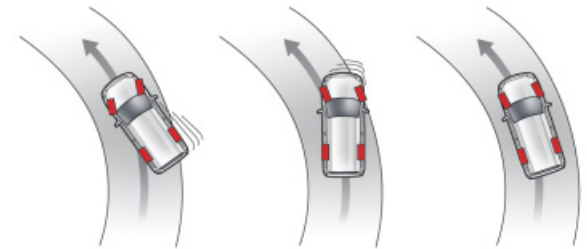
4

Airbag technology.

Dual-stage, dual-threshold front airbags deploy at one of two rates and thresholds, according to impact severity and seat-belt use.† Front side airbags are standard as well.



Front airbags inflate and deflate in a fraction of a second.



Oversteer

Understeer

VSA

6

Keeping you in control.

For 2005, Pilot EX models with leather now feature Honda's Vehicle Stability Assist (VSA) system. This sophisticated system uses an array of sensors to help detect oversteer or understeer sooner than most drivers could. It then applies braking force to the appropriate wheels and/or reduces engine power to help the driver stay on the intended course.

7

Protect precious cargo.

All Pilot models come equipped with the Lower Anchors and Tethers for Children (LATCH) system. This system makes it easier to install compatible child seats in the second row.

2

How science softens the blow.

A key to crash protection is the design of front and rear crush zones that cushion the force of an impact. These "sacrificial" structural areas deform in a controlled manner, helping to absorb and dissipate the impact energy before it reaches the rigid safety cell of the passenger cabin.

5

A rigid stance on protection.

The Pilot's rigid passenger compartment is reinforced both laterally and longitudinally to retain its size and shape in multiple crash directions, and to resist the penetration of crash forces. And a special bracket attached to the Pilot's frame is designed to help provide improved compatibility with other vehicles in frontal collisions.



†Honda reminds you and your passengers to always buckle up.



It's a Honda ▶ a success story

Soichiro Honda founded the Honda Motor Company in 1948 to provide people with affordable, dependable transportation. Within a few short years, Honda was one of the world's preeminent motorcycle manufacturers. At Honda, we believe that the first step in making a good product is to listen to people and understand their needs. This core value is reflected in almost everything we do, like designing and building our products in the markets where they're used. In the importance we place on safety engineering and on being friendlier to the environment. And in our belief that the power of ingenious thinking can make great things possible.



Plenty of red, white and blue. ▶

Honda has been assembling cars in the U.S. since 1982. Today, we benefit from the efforts of almost 25,000 American associates. Close to 4 out of 5 Honda vehicles sold in the U.S. are assembled in North America. And our network of almost 600 U.S. suppliers makes more than 90% of the content that goes into those North American Honda vehicles.



◀ Imagination unbound.

Honda innovation is reestablishing the boundaries in aerospace technology with the HondaJet – a highly fuel-efficient, low-emission experimental aircraft with exceptional cabin space. And Honda's ASIMO is the world's most advanced and capable humanoid robot.



“A company is most clearly defined neither by its people nor by its history, but by its products. Our products will speak the truth about Honda.”

Soichiro Honda, Founder, ►
Honda Motor Co., Ltd.



▼ **We have a clear edge.**

Since our pioneering CVCC engines of the '70s, Honda has led the way in Earth-friendlier cars. Today, every Honda is a Low-Emission Vehicle (LEV) or better. Our natural-gas Civic GX is the cleanest internal-combustion vehicle the EPA has ever tested.⁵ Only Honda offers three hybrid vehicles. And now, our advanced zero-emission FCX fuel-cell car is the first certified for commercial use in the U.S.



Making safety for everyone.

Honda has long been a leader in developing and applying sophisticated safety technology. Our new research facility in Ohio features the world's most advanced high-resolution crash barrier. And our Tochigi, Japan, laboratory is the world's first indoor all-directional crash-test facility. Activities at these centers are playing a critical role in the ongoing evolution of our automotive "safety for everyone" initiative. Through a comprehensive approach to vehicle safety, Honda seeks to provide top-level occupant protection within all of our cars and trucks—regardless of size or price—as well as reduced aggressiveness toward other vehicles and improved safety for pedestrians.



◀ **Winning is good. Learning is better.**

Honda began racing motorcycles in the 1950s and cars in the '60s. Over the years, we've done quite a bit of winning, too—including the top seven places in the 2004 Indy 500[®], led by Buddy Rice of Rahal-Letterman Racing. And all of our vehicles certainly reflect the advancements of our hard-won technology. But we believe the greatest benefit of racing is how it prepares our engineers to think creatively under pressure. So they're always ready for the next big challenge.

pilot ▶ specifications and features

Engineering	Pilot LX	Pilot EX
Engine Type	V-6	V-6
Engine Block/Cylinder Head	Aluminum-Alloy	Aluminum-Alloy
Displacement (cc)	3471	3471
Horsepower @ rpm (SAE net)	255 @ 5600	255 @ 5600
Torque (lb.-ft. @ rpm)	250 @ 4500	250 @ 4500
Valve Train	24-Valve SOHC VTEC®	24-Valve SOHC VTEC
Multi-Point Fuel Injection	•	•
Drive-by-Wire Throttle System™	•	•
Variable Torque Management* 4-Wheel Drive (VTM-4*)	•	•
CARB Emissions Rating	ULEV-2	ULEV-2
Direct Ignition System with Immobilizer	•	•
105,000-Mile Tune-Up Interval*	•	•
Transmission		
5-Speed Automatic Transmission	•	•
Gear Ratios: 1st: 2.563, 2nd: 1.552, 3rd: 1.021, 4th: 0.767, 5th: 0.583, Reverse: 1.846, Final Drive: 4.428		
Body/Suspension/Chassis		
Unit-Body Construction	•	•
MacPherson Strut Front Suspension	•	•
Multi-Link Rear Suspension with Trailing Arms	•	•
Stabilizer Bar (mm, front/rear)	23.0/20.0	23.0/20.0
Variable-Assist Power Rack-and-Pinion Steering	•	•
Turning Diameter, Curb-to-Curb (ft.)	38.0	38.0
Power-Assisted Ventilated Front Disc/Solid Rear Disc Brakes (in.)	11.8/12.3	11.8/12.3
Wheels	16" Styled Steel	16" Alloy
Tires: All-Season	P235/70 R16 104S	P235/70 R16 104S
Exterior Measurements		
Wheelbase (in.)	106.3	106.3
Length (in.)	188.0	188.0
Height (in.)	70.6	71.7
Width (in.)	77.3	77.3
Track (in., front/rear)	66.3/66.5	66.3/66.5
Minimum Ground Clearance (in.)	8.0	8.0
Approach/Departure (degrees)	28.5/23.0	28.5/23.0
Curb Weight (lbs.)	4414	4431
Towing Capacity (lbs.)	4500 ¹	4500 ⁴
Interior Measurements		
Headroom (in., front/middle/rear)	41.9/40.9/38.9	41.9/40.9/38.9
Headroom with Moonroof (in., front/middle/rear) [†]		39.5/38.9/38.9
Legroom (in., front/middle/rear)	41.4/37.4/30.2	41.4/37.4/30.2
Shoulder Room (in., front/middle/rear)	61.6/61.4/59.7	61.6/61.4/59.7
Hiproom (in., front/middle/rear)	57.5/56.6/49.0	57.5/56.6/49.0
Cargo Volume (cu. ft., behind 3rd row)	16.3	16.3
Cargo Volume (cu. ft., behind 2nd row)	48.7	48.7
Cargo Volume (cu. ft., behind 1st row)	90.3	90.3
Total Interior Volume (cu. ft.)	176.9	176.9
Seating Capacity	8	8
EPA Mileage Estimates ³ /Fuel Capacity		
5-Speed Automatic (City/Highway)	17/22	17/22
Fuel (gal.)	20.4	20.4
Seating		
Front Bucket Seats	•	•
Leather-Trimmed Seats and Door-Panel Inserts (front and 2nd row)		Available
Heated Front Seats		(with Leather)
Driver's Seat Adjustment	Manual	8-Way Power
Driver's Seat Manual Lumbar Support	•	•
60/40 Split, Flat-Folding 2nd-Row Bench Seat	•	•
60/40 Split, Flat-Folding 3rd-Row Bench Seat	•	•
Head Restraints at all Seating Positions	•	•
Audio System		
AM/FM/CD Audio System with 4 Speakers	•	•
AM/FM/6-Disc CD Changer/Cassette Audio System with 7 Speakers		•
Rear Subwoofer		with 7-Speaker Audio

*Does not apply to fluid and filter changes. See your owner's manual for details. †Moonroof is available only on EX models with leather. **Drive responsibly. State laws prohibit distracted driving.

Safety	Pilot LX	Pilot EX
3-Point Seat Belts at all Seating Positions	•	•
Front 3-Point Seat Belts with Automatic Tensioning System	•	•
Adjustable Front Seat Belt Anchors	•	•
Dual-Stage Front Airbags (SRS)	•	•
Front Side Airbags with Passenger-Side Occupant Position Detection System (OPDS)	•	•
Side-Impact Door Beams	•	•
Anti-Lock Braking System (ABS)	•	•
Electronic Brake Distribution System (EBD)	•	•
Brake Assist		(with Leather)
Vehicle Stability Assist (VSA®)		(with Leather)
Tire Pressure Monitoring System (TPMS)	•	•
Outboard Lower Anchors and Tethers for Children (LATCH) (2nd-row)	•	•
Child-Seat Tether Anchors (3rd-row)	•	•
Child-Proof Rear Door Locks	•	•
Immobilizer Theft-Deterrent	•	•
Exterior Features		
Power Moonroof with Tilt Feature		(with Leather)
Variable Intermittent Windshield Wipers	•	•
Intermittent Rear Window Wiper/Washer	•	•
Remote Entry System	•	•
Security System	•	•
Dual Power Mirrors	Black	Body-Colored
Heated Dual Power Mirrors		(with Leather)
Rear Privacy Glass		•
Heat-Rejecting Green-Tinted Glass	•	•
Roof Rails		•
Rear Roofline Spoiler	Black	Body-Colored
Body Side Molding	Black	Body-Colored
5-mpg Impact-Absorbing Body-Colored Bumpers	•	•
Comfort & Convenience		
Front and Rear Air Conditioning with Air-Filtration System	•	Synchronized Automatic Climate Control
Honda Satellite-Linked Navigation System™ with Off-Road Tracking		Available (with Leather) ¹
Honda DVD Entertainment System		Available (with Leather) ¹
Power Windows with Auto-Up/Down Driver's Window	•	•
Power Door and Tailgate Locks	•	•
Cruise Control	•	•
HomeLink® Remote System ³	•	•
Steering Wheel-Mounted Audio Controls	•	•
Multi-Functional Center Console Storage with Cellular Phone Cradle**	•	•
Adjustable Steering Column	•	•
Beverage Holders in all 3 Rows	7 Total	9 Total
12-Volt Power Outlets (front, 2nd-row and cargo area) (4 total)	•	•
Grab Rails with Integrated Map Lights (2nd- and 3rd-row)	•	•
Ambient Console Lighting		(with Leather)
2nd-Row Fold-Down Activity Tray	•	•
Rear Window Defroster with Timer	•	•
Rear-Seat Heater Ducts	•	•
Floor Mats	•	•
Hidden Storage Well	•	•
Cargo Area Tie-Down Anchors (6 total)	•	•
Cargo Area Grocery-Bag Hooks (9 total)	•	8 with DVD Entertainment System
Cargo Net	Accessory	•
Instrumentation		
Door-/Tailgate-Open Indicator Light	•	•
Low-Fuel Indicator Light	•	•
Low-Oil Pressure Indicator Light	•	•
Tire Pressure Monitoring System Indicator Light	•	•

¹The factory-installed navigation system and DVD Entertainment System are only available separately on EX models with leather trim options. See dealer for details. ²Carrying too much cargo or improperly storing it can affect the handling, stability and operation of the vehicle. Before carrying any cargo, be sure to consult the owner's manual for load limits and loading guidelines. ³HomeLink® is a registered trademark of Prince Corporation, a wholly owned subsidiary of Johnson Controls.™ ⁴Towing requires installation of a power-steering and transmission-fluid cooler, both available exclusively from your Honda dealer. Maximum towing capacity is 4,500 lbs. for boat trailers and 3,500 lbs. for all other trailers. Premium unleaded fuel is recommended when towing above 3,500 lbs. Refer to the owner's manual for additional towing information. ⁵Tier 2 Bin 2 EPA certification as of June 2004. ⁶Accord Hybrid available Winter 2004. **3-Year/36,000-Mile Limited Warranty:** Ordinary maintenance or adjustments, parts subject to normal wear and replacement, and certain items are excluded. See your Honda dealer for the terms and conditions of this limited warranty. ⁸Based on 2005 EPA estimates. Use for comparison purposes only. Actual mileage may vary. **Always use seat belts and appropriate child seats. Children 12 and under are safest when properly restrained in the rear seat.** Specifications, features, illustrations and equipment shown in this brochure are based upon the latest available information at the time of printing. Although descriptions are believed correct, accuracy cannot be guaranteed. American Honda Motor Co., Inc., reserves the right to make changes at any time, without notice or obligation, in colors, specifications, accessories, materials and models. Some features mentioned herein are not available in all areas. See your Honda dealer for details. Some vehicles may be shown with optional equipment. Available = Optional. All images contained herein are either owned by American Honda Motor Co., Inc., or used under a valid license. It is a violation of federal law to reproduce these images without express written permission from American Honda Motor Co., Inc., or the individual copyright owner of such images. Honda Financial Services is a DBA of American Honda Finance Corporation. Honda, the H-mark symbol, Honda Care, Honda Satellite-Linked Navigation System, Drive-by-Wire Throttle System, VTEC, Variable Torque Management, VTM-4 and VTM-4 Lock are trademarks of Honda Motor Co., Ltd. ©2004 American Honda Motor Co., Inc.

pilot ▶ colors and accessories

Exterior/Interior Colors	LX	EX
Billet Silver Metallic	Gray	Gray
Desert Rock Metallic	Saddle	Saddle
Nighthawk Black Pearl	Saddle or Gray	Saddle or Gray
Redrock Pearl	Saddle	Saddle
Sage Brush Pearl	Fern	Fern
Steel Blue Metallic	Gray	Gray
Taffeta White	Fern	Fern



EX SPORT PACKAGE ▲

Rugged individualists will appreciate how the **dealer-installed** sport package helps set them apart with roof-rail crossbars for extra cargo capacity, running boards and fog lights.



Accord Sedan



Accord Hybrid



Civic Sedan



Civic Hybrid



S2000



Accord Coupe



Civic Coupe



Civic Si



Insight



Element



CR-V



Odyssey



At Honda, support and assistance are always at the ready. Your dealer's team of trained technicians is there to help keep your Honda car or truck in superb shape. Any Honda accessories installed at the time you buy your vehicle are covered under the 3-year/36,000-mile new-vehicle limited warranty.⁹ And if you need more information or assistance with our products, please don't hesitate to give us a call at 1-800-33-Honda.

HONDA

Financial Services

Whether you buy or lease a Honda vehicle, Honda Financial Services can assist you with the process. Please ask your dealer which lease or purchase plan best suits your needs.

HONDA Care

Honda Care™ is a highly affordable, comprehensive vehicle and travel protection plan backed by Honda reliability, service and parts. Please see your dealer for all the details.