

2006 CHRYSLER

# 300



**CHRYSLER**  




You will see our vision reflected in the design, feel our resolve with each turn of the wheel, and know, with every passing mile, exactly what it means to carry the name

# CHRYSLER.



In building the 300, Chrysler knew it had extended the boundaries of great design and engineering. We hoped the world would notice and, ultimately, it did. By 2005, Chrysler 300 was the most awarded new car ever,\* and had earned the U.S. Government's ★★★★★ Five-Star front-impact crash test rating†. Since then, Chrysler has followed its inspiration and built the astounding 300C SRT8 — the most powerful member of the 2006 300 line. As with the other 2006 Chrysler 300s, it has the ability to leave all competitors far behind while remaining surprisingly within reach. It is, after all, a Chrysler, born of values that place equal emphasis on accessibility and on accolades. In that, each of our vehicles provides proof that

## INSPIRATION COMES STANDARD.

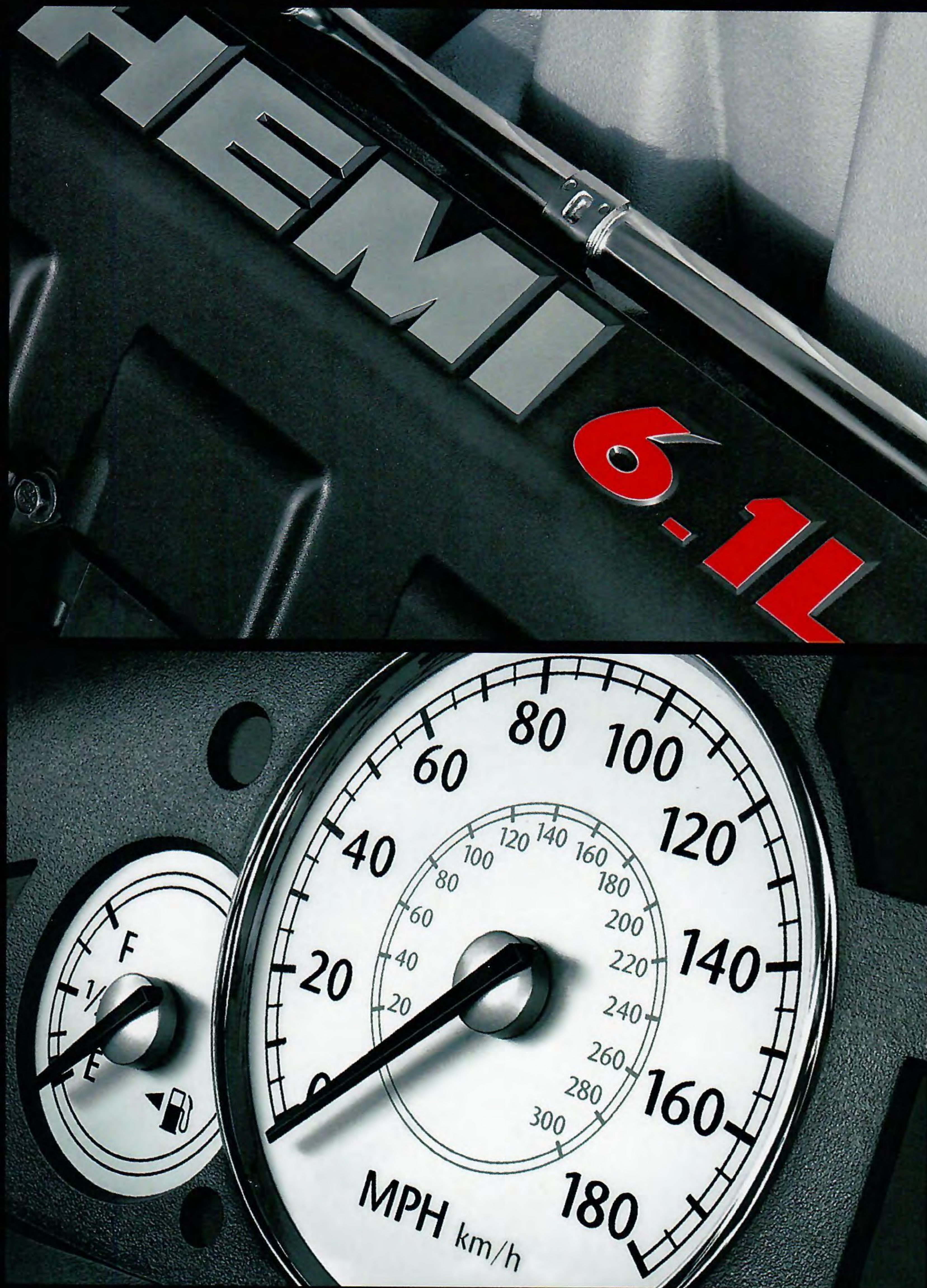
\*Based on automotive awards won within the introductory model year (2005). †Based on NHTSA 2005 model-year rating.





300C in Satin Jade Pearl





In 1955, HEMI® powered Chrysler 300 cars, later nicknamed "the beautiful brutes," thrilled drivers and intimidated competitors. Today, 300C SRT8 tops them with a 6.1-liter SRT HEMI V8 that can go from 0 to 60 in the low 5's, produce 425 horsepower @ 6,000 rpm and 420 lb-ft of torque @ 4,800 rpm. The new 6.1-liter has the classic Hemi Orange block, and black crinkle-finish valve covers. The 180-mph speedometer is brand new.

# SRT8

In the revolutionary 6.1-liter SRT HEMI® V8, decades of racing knowledge are combined with the most advanced 21st century technologies. An extra-strong forged steel crankshaft and sodium-filled valves generate immense power and torque. A high-flow aluminum air intake manifold draws deep breaths of air which, after ignition, are expelled through a large-diameter exhaust system with dual headers finished with chromed 3.5-inch tips. A performance-tuned five-speed AutoStick® transmission operates with easy automatic or exciting clutchless manual shifting. A fully independent front and rear suspension keeps 300C SRT8 confidently connected to the road. An astounding power plant, a precisely balanced driveline, and a magnificent body are all part of the 300C SRT8 equation. An equation so breathtaking that it has made some say, "Chrysler's 300C SRT8 is the car we thought the American auto industry would not build again."\*

\*Car and Driver, June 2005.



300C SRT8 in Brilliant Black Crystal Pearl





The brash and distinctive 300C SRT8 front end draws attention with High Intensity Discharge headlamps. An assertive body-color fascia and chin spoiler flank a wide-checked grille. A high beltline, tall profile, and 20-inch forged aluminum wheels help give 300C SRT8 a magnificent road presence. If you are one of those who will be buying a 300C SRT8, you are invited to the SRT Track Experience — a one-day driving course conducted by a professional driving school on selected tracks. Get schooled at [www.SRTTrackExperience.com](http://www.SRTTrackExperience.com).





Steering wheel-mounted audio controls are an example of the smart technology that marks every detail of the 300C SRT8. Authoritative 20-inch Goodyear F1 Supercar tires and massive four-piston Brembo Performance brake calipers deliver the unequivocal control needed for the Electronic Stability Program (ESP). The SRT badge appears on both the trunk lid and the leather-trimmed, Preferred Suede® accented, firmly bolstered, performance-style front seats.





"The most awarded new car ever,\*" is appropriately powered by a 5.7-liter HEMI® V8 that produces the most horsepower and torque in its class! Chrysler 300C can count on 340 horsepower @ 5,000 rpm and 390 lb-ft of torque @ 4,000 rpm. Whatever looks this good tends to feel good as well, as the tortoise-shell-style trim shift knob for the five-speed AutoStick® transmission quickly proves.

\*Based on automotive awards won within the introductory model year (2005). '2005 Ward's Large Regular segment.

**300C** For power, performance, and handling in a reinvented and redefined sedan, try a 5.7-liter HEMI® V8 engine that delivers 340 horsepower, while you enjoy premium leather-trimmed seats and sophisticated interior appointments. A super-efficient Multi-Displacement System (MDS) economizes on fuel, without affecting ride feel. In an almost unprecedented technological move, 300C lets you enjoy thrilling power and surprising fuel efficiency\* in one sedan. When your driving indicates that full V8 power is not required, MDS deactivates four of the V8 engine's eight cylinders, seamlessly switching to four-cylinder efficiency. With MDS, 300C's drivers get a taste of the future, where the demands of performance are reconciled with smart fuel usage and environmental good sense. It is on just such technological innovations that the Chrysler 300 stakes its claims.

\*17 city/25 hwy EPA est. mpg. From 5 to 20 percent improvement, depending on driving habits.







300C in Magnesium Pearl

When nighttime cleaves away from the gleam of 300C's available High Intensity Discharge headlamps, you'll find it especially easy to appreciate smooth and confident driving at the automotive world's highest level. In one persuasive package, 300C provides the polished essentials of power, performance, handling, and refinement.



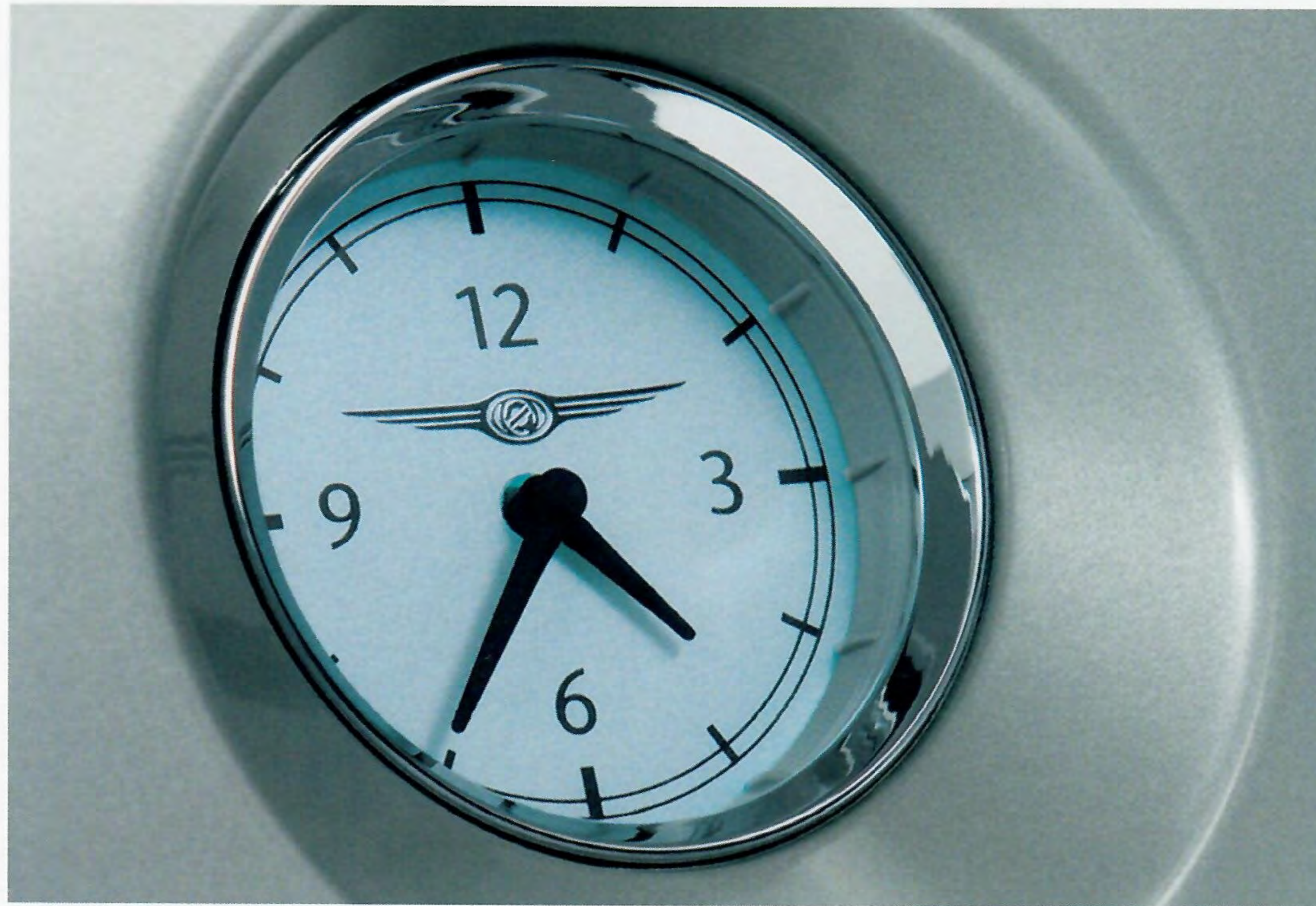


300C Light Graystone leather-trimmed interior with Dark Slate Gray/Light Graystone trim



Sophisticated comfort, complete with premium leather-trimmed seats, tortoise-shell-style accents, and available leading edge communications technology, complements a spacious cabin that sets the bar even higher for fine sedans everywhere. With 300C, Chrysler has taken on the challenge of offering an attainable sedan that will attract drivers who demand the best at any price. Even, as in this case, a somewhat lower price.





Details. A bijou clock face with winged badge. Stitched leather-trimmed upholstery. Astounding sound. A Satin Silver center stack holds an available DVD-based GPS navigation system with a highly visible 5.8-inch TFT Display Screen. An available 276-watt six-speaker or 368-watt eight-speaker industry-exclusive Boston Acoustics® sound system accurately reproduces high, low, and midrange tones that fill the cabin with concert-quality sound.







300C Light Graystone interior with Dark Slate Gray/Light Graystone trim

Quality in both feeling and appearance comes with tortoise-shell-style accents on door pulls, shift knob, and steering wheel. Steering wheel-mounted audio controls let you search channels safely. A Boston Acoustics® 276-watt digital amplifier puts real punch into the 120 plus channels of the available SIRIUS® Satellite Radio. Also available, a six-disc CD changer with MP3 capability. The Electronic Vehicle Information Center lets you program and monitor up to 128 vehicle functions. A Homelink® Universal Transceiver allows remote control of up to three remote devices.



The technology in 300C is leading edge, but the comfort is timeless. Leather-trimmed upholstery, a smooth and quiet ride, superb sound systems, and details such as an integrated rear-seat armrest let you travel in an extraordinary space all your own. Refinements such as Automatic Dual Zone Temperature Control and eight-way driver and front-passenger power-heated front seats help create an environment that turns every ride into a pleasure jaunt.



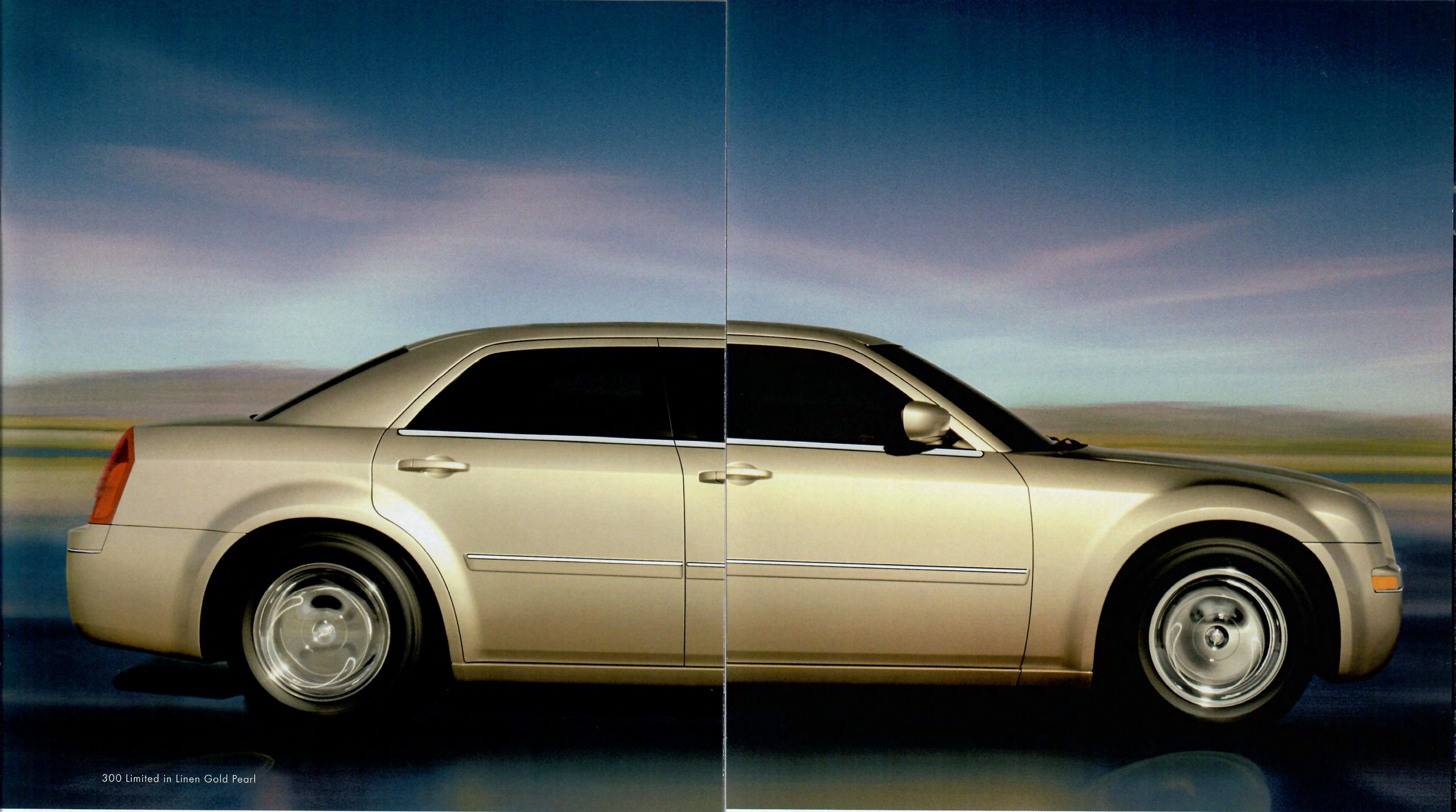


From the glow of the instrument panel's white gauge faces to the lively and stylish fun of an available rear-seat DVD Video Entertainment System (VES®) — with inputs for personal audio and video hardware — automotive technology and in-travel entertainment are pleasures that 300 Limited offers driver and passengers in abundance. Adjustable ventilation, well-appointed space, and even details such as a rear-seat integrated center armrest, complete with cup holders: in 300 Limited, elegance and comfort know no limits.

**LIMITED** You will quickly find out what is behind 300 Limited's looks. Just turn the key and a 250-horsepower 3.5-liter High Output V6 engine will show you an excellent combination of fuel economy and power. Get inside, close the door, and put your sunglasses case and cell phone into the handy standard console beside you. Standard steering wheel-mounted audio controls make channel searching and volume control safe and easy. At night, an auto-dimming rearview mirror (a safe and smart standard feature) mitigates headlamp glare from drivers behind you. Standard eight-way power driver and front-passenger seats adjust to keep you comfortable. Finally, highly desirable available Genuine California Walnut wood accents prove that beauty really is more than skin deep. The silky texture and luster of Genuine California Walnut gives an elegant aura to the entire 300 Limited interior on every ride.







300 Limited in Linen Gold Pearl

A high beltline, creating an elevated sedan profile, sets the tone for Chrysler 300 Limited's inimitable style. Long and elegant bodyside moldings with chrome accents and molded body-color side mirrors flow perfectly with Limited's sculpted hood. Seventeen-inch chrome-clad wheels complete a look that proves Chrysler has once again redefined the idea of road presence.





To understand 300 Touring, think power. Power interior appointments, such as an available moonroof for enjoying the sun or stars. Available power adjustable foot pedals and standard power-heated, power-adjustable exterior mirrors. An eight-way power driver's seat adjusts for your comfort. And an available DVD system includes inputs to power your personal audio and video devices.

# TOURING

The 300 Touring demonstrates a true determination to control your contact with the road. Abundant power from a 3.5-liter High Output 250-horsepower V6 is controlled via a five-speed AutoStick® transmission and is ably assisted by antilock brakes (ABS), all-speed traction control, Brake Assist, and available all-wheel drive (AWD). An Electronic Stability Program (ESP) monitors wheel data to help you maintain your intended course. Similarly, Touring's available Comfort/Convenience Group determines your interior environment with eight-way power adjustable, heated driver and front-passenger seats with standard leather trim. An MP3 input on the radio lets you access your personal music collection. When it comes to Touring, control is a *good* thing.



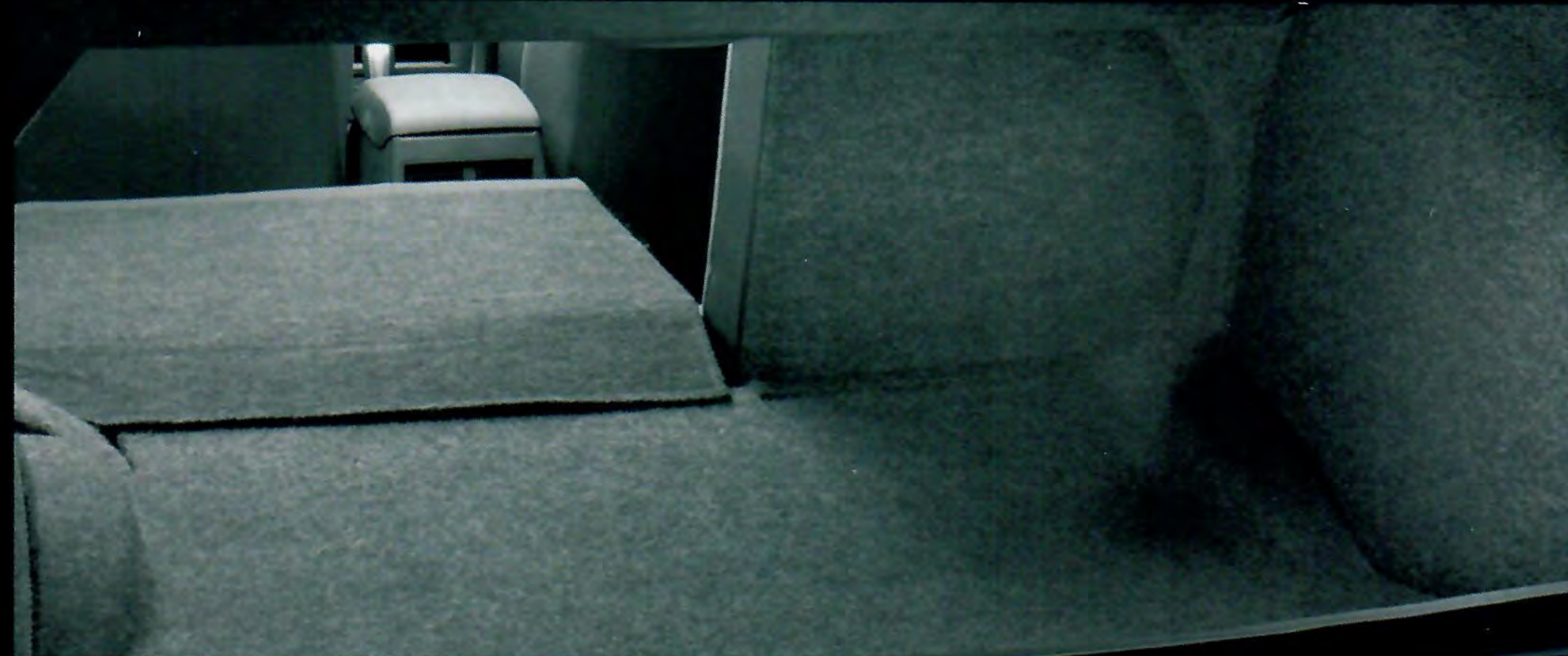




300 Touring in Brilliant Black Crystal Pearl

The passerby may not be able to take it all in at one glance, but, as the 300 Touring model disappears down the street, the bodyside moldings, power exterior mirrors, and machined aluminum 17-inch wheels will have made their impression. With the endorsement of the winged badge and its broad-shouldered good looks, the verdict will be made: this automobile is an instant classic.





An eight-way power driver's seat adjusts to your favorite driving position. Attractive and durable seating fabric keeps its good looks. But the 300 interior is more than just passenger-friendly — it is cargo-friendly, as well. The roomy and versatile cabin is augmented by 15.6 cubic feet of highly versatile, useful trunk space. Fold down the configurable 60/40 split-folding rear seats for additional cargo room to allow pull-through loading convenience for longer items such as skis or golf clubs\*.

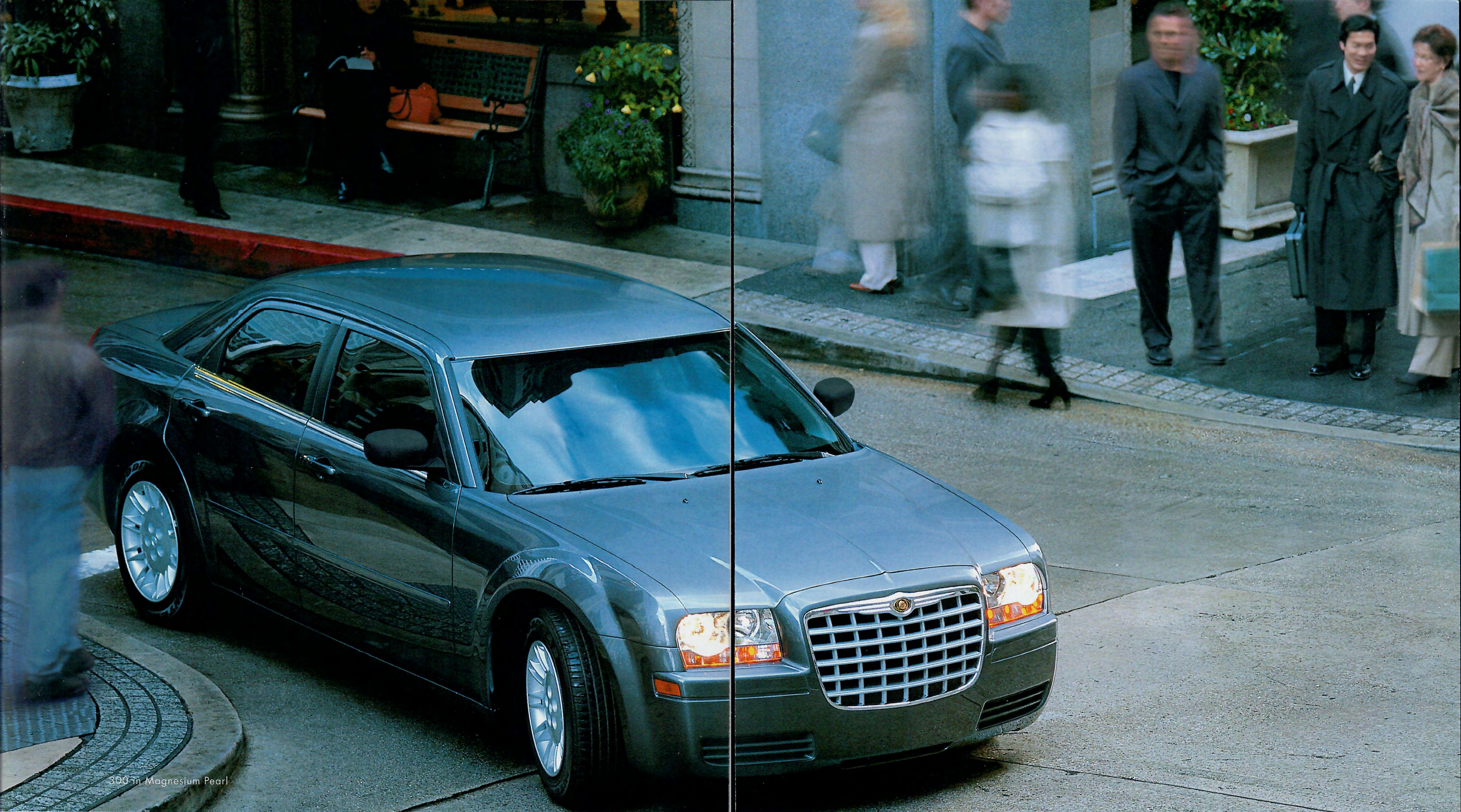
\*Properly secure all cargo.

**300** To experience beautiful styling, superb engineering, brilliant innovations, and highly satisfying power, all at the most remarkable value, choose Chrysler 300. Concealed beneath artfully sculpted sheet metal and expressive trim, all 300 models have standard advanced multistage front air bags\* within the unique safety cage construction that protectively carries driver and passengers in a module of steel. 300's interior appointments are of premium quality and comfort. One of many features is an AM/FM radio that includes a single-disc CD player and an auxiliary input for MP3 capability. A sturdy 2.7-liter V6 engine, producing 190 horsepower, ensures high confidence in heavy traffic and on the open road, while providing economical fuel efficiency measured at 21 city and 28 highway miles per gallon. Providing the perfect response for 300's potential momentum are four-wheel disc brakes and standard 17-inch Goodyear all-season tires.

\*Certified to the Federal Regulation for automatic passenger occupant classification. Always use seat belts. Children 12 and under should always be in a backseat correctly using an infant or child restraint system, or the seat belt positioned correctly for the child's age and weight.





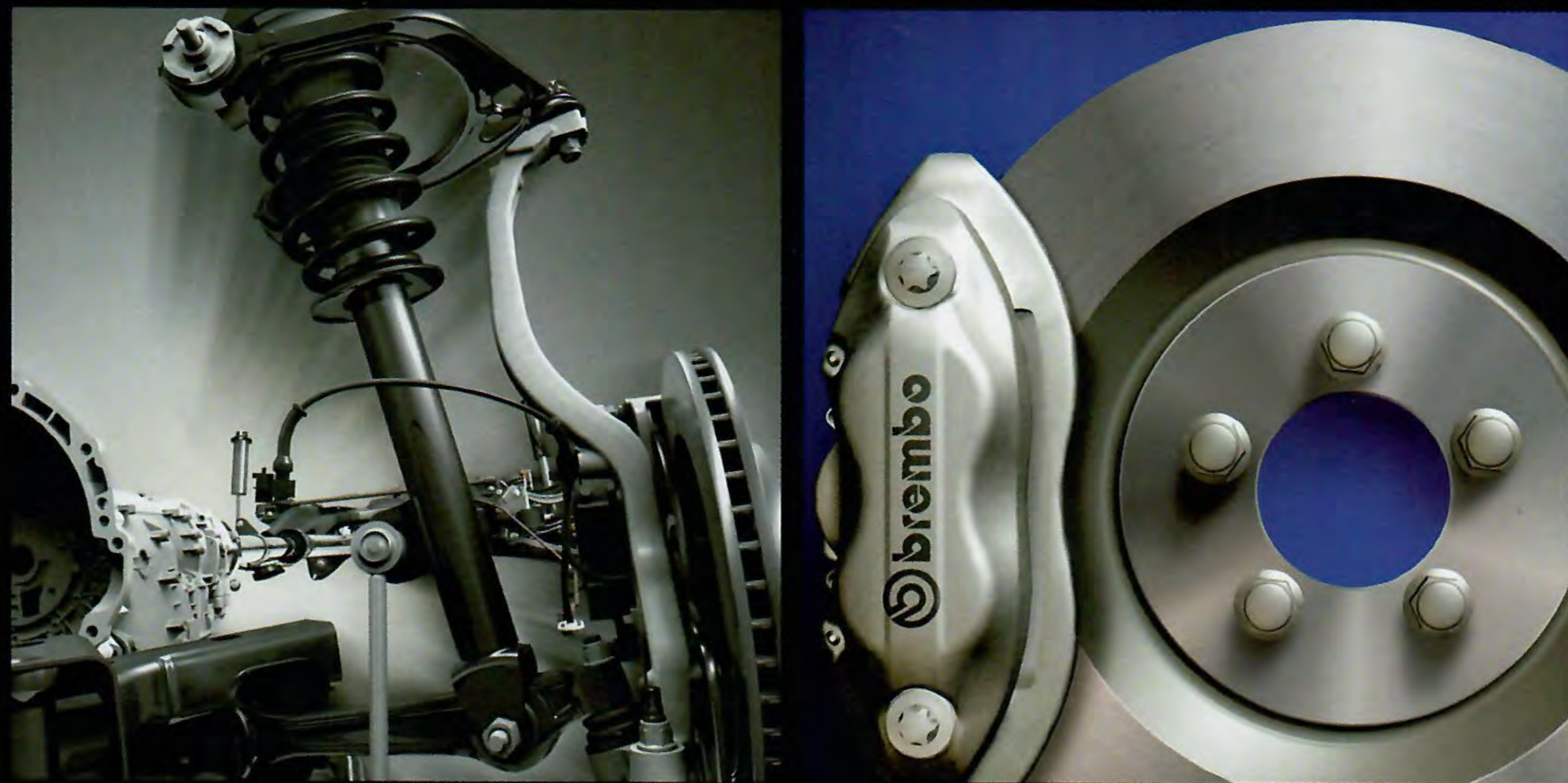
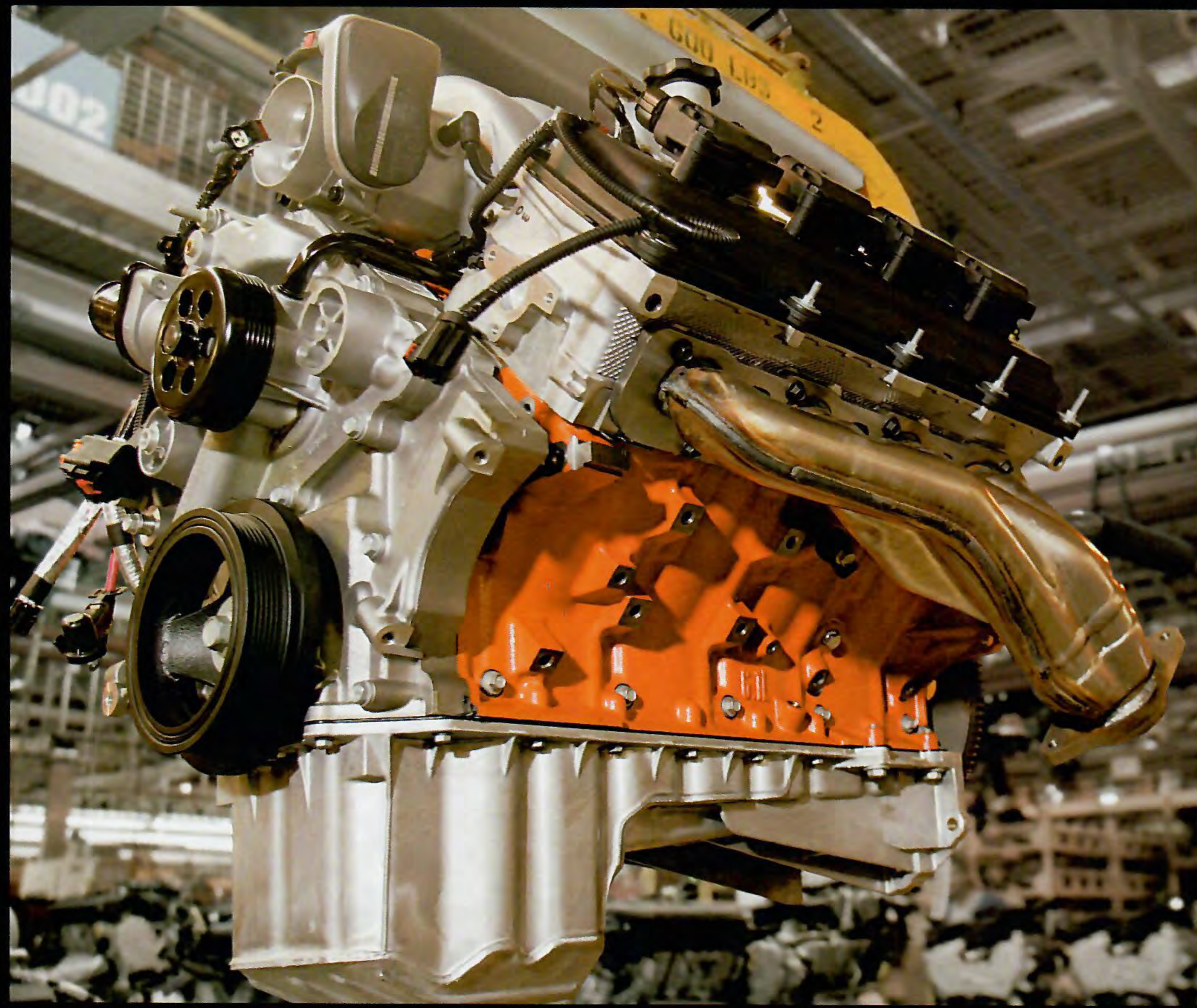


300 in Magnesium Pearl

Chrysler 300 represents the ultimate in high-quality value. As with its siblings, 300 combines advanced technology with a high level of safety that has earned it the U.S. Government's ★★★★★ Five-Star front-impact crash test rating.\* Consequently, 300 completely fulfills the intelligent buyer's new car criteria: premium product plus attainable price equals absolute satisfaction.

\*Based on NHTSA 2005 model-year rating.





The 6.1-liter SRT HEMI® V8 engine in the 300C SRT8 is one of Chrysler's stellar engineering achievements. Racing knowledge called for an extra-strong forged steel crankshaft and sodium-filled exhaust valves. A high-flow aluminum air intake manifold with large-diameter exhaust system and dual headers help give the 6.1 its 425 horsepower. All disciplined by Brembo high-performance four-piston brake calipers (lower right). 300's performance-tuned front suspension (lower left) was designed for both comfort and cornering.

## PERFORMANCE

How did Chrysler engineers build the most powerful line of engines in 300's class?\* Simply put, the more air and fuel you can compress and ignite, the more power you get. The modern 5.7-liter HEMI® V8 was a landmark in the 300's search for power. The efficient and energetic 2.7-liter and 3.5-liter High Output V6 engines share some characteristics of the staggering brute force of the 6.1-liter SRT HEMI V8 in the 300C SRT8. Below, some additional refinements of this magnificent line of engines are described.

- ▶ The **6.1-liter SRT HEMI V8 engine** in the 300C SRT8, derived from the legendary 5.7-liter HEMI V8, contains eight hemispherical-head combustion chambers which allow for larger intake and exhaust valves, and two spark plugs per cylinder. This thermally-efficient configuration results in a more complete burn of fuel, and increased power.
- ▶ The **5.7-liter HEMI V8 engine** in the 300C offers the same valve configuration as the 6.1. A lower-restriction intake and exhaust system produces 340 horsepower and 390 lb-ft of torque.
- ▶ **Multi-Displacement System (MDS)** in the 5.7-liter automatically deactivates four of a Chrysler HEMI V8 engine's cylinders, with no noticeable loss of power, when full eight-cylinder operation is not required.
- ▶ The **3.5-liter High Output V6 engine** in the Limited and Touring uses a dual-tuned intake manifold for 250 horsepower and 250 lb-ft of torque.
- ▶ An **AutoStick® transmission** allows either automatic or clutchless manual gear shifting while improving fuel economy† on the 3.5-liter V6, 5.7-liter HEMI V8, and 6.1-liter SRT HEMI V8 engines.
- ▶ The **2.7-liter V6 engine**, standard in the 300, provides effective and economical performance.

\*2005 Ward's Large Regular segment.  
†17 city/25 hwy EPA est. mpg.

## HANDLING

The Chrysler 300 lineup employs a veritable arsenal of technological innovations that provide reliable and satisfying driving under all conditions.

- ▶ The **all-wheel-drive system**, available on 300C, 300 Limited and 300 Touring, is a true full-time AWD system. It provides constant power to both axles and delivers 62 percent of the engine's torque to the rear wheels and 38 percent to the front wheels.
- ▶ The 300's **short-/long-arm front suspension** is designed to help the tires firmly hold the road, providing dynamic handling while reducing the harshness of the road surface.
- ▶ Thanks to an **exacting suspension design**, the ride height of the 300C SRT8 — even with 20-inch wheels and tires — is a half-inch lower than the 300C.



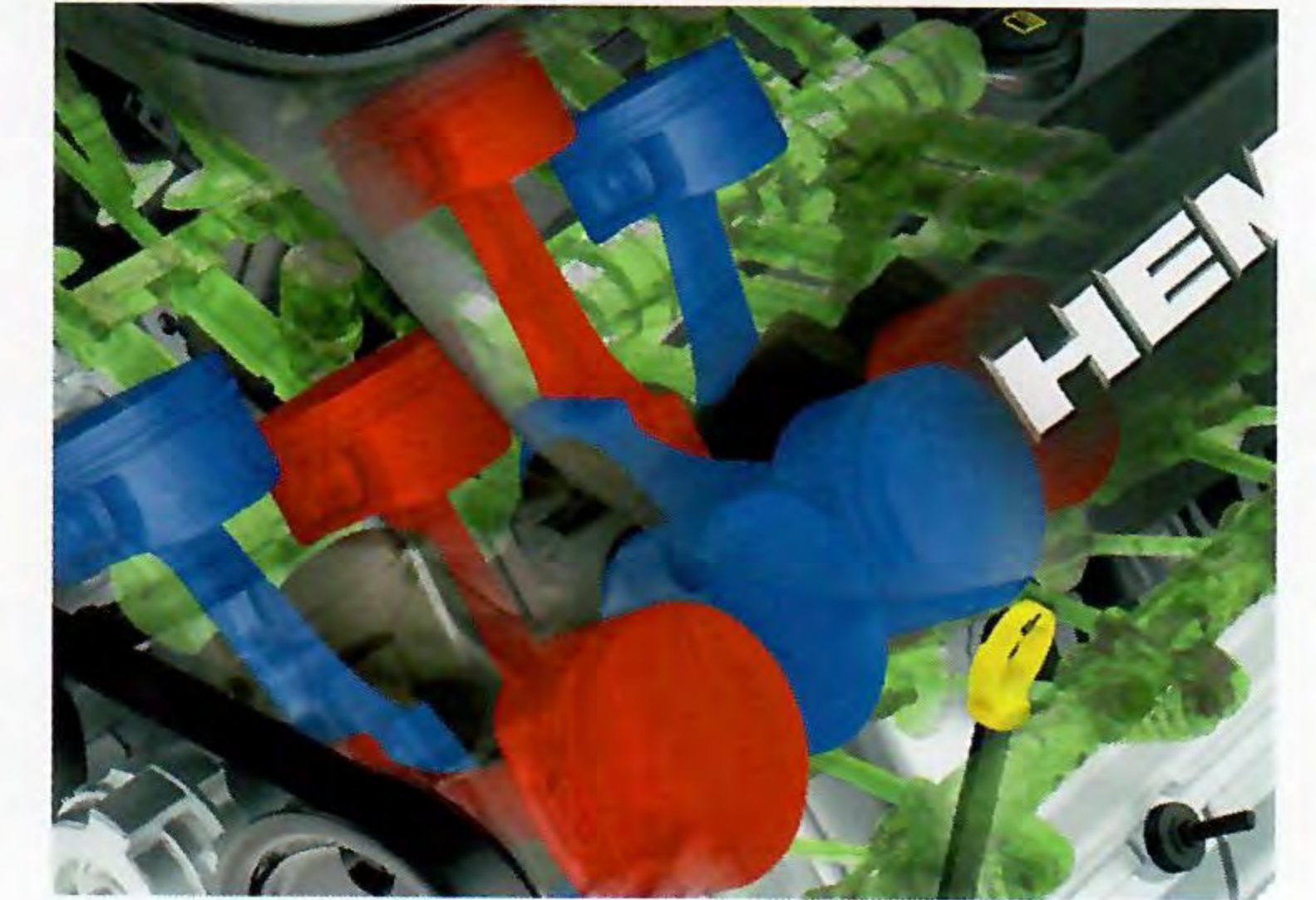


**AWD** An available all-wheel-drive (AWD) system, fully active at all times, allows all four wheels to adjust independently to the road under all conditions. This permits individual wheels to deal with slippage without effort on the driver's part.

- AWD splits the burden of delivering engine torque by splitting the power between the front and rear wheels, as needed. A **brilliantly designed transfer case** and differential, geared to deliver power to each wheel, makes this possible.
- Chrysler 300 AWD sends **62 percent of engine torque to the rear axle and 38 percent to the front**. This improves the vehicle's on-road traction by sending more torque exactly to the wheel or wheels that need it.
- An **axle ratio of 3.07** with 300 AWD further unites performance with efficiency. And the 300 AWD system operates on its own. All the time.
- 300's AWD system is **constantly engaged**, guided by brake sensors that help you dominate the trickiest roads in inclement weather, for improved performance and handling on wet and dry roads.
- Chrysler 300C AWD with HEMI® V8 achieves **the lowest annual fuel cost** of any V8-powered AWD vehicle\*.

\*Based on the 2005 EPA Fuel Economy Guide Annual Fuel Cost estimates. Excludes other DCX vehicles.

**MDS** The 5.7-liter HEMI® V8 engine in Chrysler 300C delivers both inspiring horsepower and efficiency via its brilliant Multi-Displacement System (MDS).

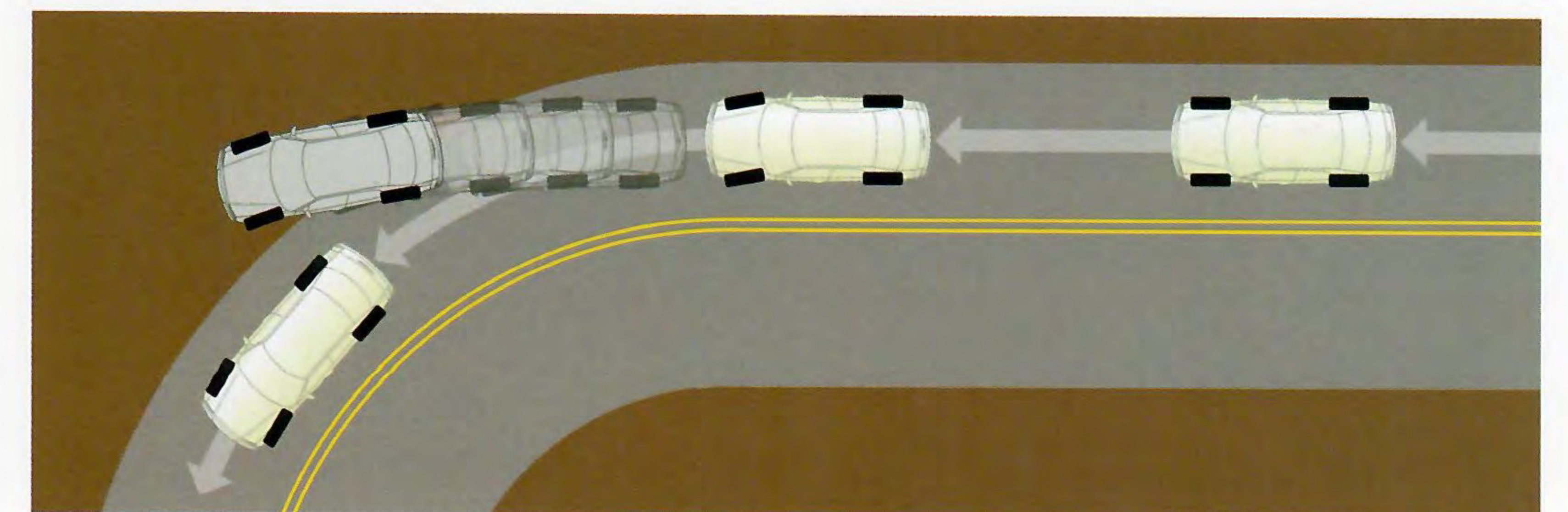


- For improved fuel efficiency\*, MDS **seamlessly deactivates four of the V8's cylinders** (shown at right, in blue) when full power is not required.
- Sophisticated algorithms work in conjunction with the **Electronic Throttle Control** to allow the HEMI engine to transparently transition from eight to four cylinders in 40 milliseconds (0.04 seconds).
- MDS improves **fuel economy** by up to 20 percent\*.

**ESP** The Electronic Stability Program (ESP)<sup>†</sup> with Brake Assist constantly monitors a driver's input against the vehicle's actual course and provides precise corrections as needed, as shown in the illustration below.

- When any disparity is detected, ESP **corrects the vehicle's course** by automatically applying brake force and/or reducing engine torque.
- Working in conjunction with ESP, **the Brake Assist program** monitors brake pedal pressures and applies maximum pressure to the braking system in the event of a panic stop.

\*17 city/25 hwy EPA est. mpg. From 5 to 20 percent improvement depending on driving habits.  
<sup>†</sup>Electronic Stability Program (ESP): No system, no matter how sophisticated, can repeal the laws of physics or overcome careless driving actions. Performance is limited by available traction, which snow, ice and other conditions can affect. When the ESP warning lamp flashes, the driver needs to use less throttle and adapt speed and driving behavior to prevailing road conditions.







Advanced multistage driver and front-passenger air bags work with an Occupant Classification System (OCS) to gauge the appropriate force of air bag deployment with respect to passenger weight. Additional available safety features include front and rear side-curtain air bags, self-sealing tires, and ParkSense™ Rear Park Assist System.\* The Electronic Stability Program with Brake Assist, and all-speed traction control, are standard on select models.

\*Detects most obstacles. As with all electronically controlled systems, care is advised. Always check entire surroundings before backing up.

**SAFETY** Safety is crucial in Chrysler vehicle design. So, it is no surprise that *all* Chrysler 300 models have achieved the ★★★★★ Five-Star front-impact crash test rating<sup>†</sup>; the highest governmental safety rating for evaluating vehicle management of front-impact crash energy. Chrysler 300 has been chosen "Best Pick" by the Insurance Institute for Highway Safety for offset-frontal crash test!<sup>‡</sup>

- ▶ All 300 models use steel Unibody safety cage construction, and standard advanced multistage air bags<sup>§</sup> with **Occupant Classification System<sup>§</sup> (OCS)**. A part of the advanced multistage air bag system evaluates the force with which front air bags should deploy, and provides the correct amount of protection for the seat's occupant.
- ▶ Available **front and rear side-curtain air bags** help provide protection from side-impact collisions.

**SECURITY** A primary benefit of Chrysler 300 is peace of mind. Available rain-sensing wipers act automatically when rain falls. Available **High Intensity Discharge** headlamps are powerful and brilliantly attractive. Headlamp washers, a feature usually found only on exclusive European models, are also available.

- ▶ The available **UConnect™ Hands-Free Communication System** allows you to safely place calls while driving. Your 300's speaker system clearly supplies your caller's side of the conversation.
- ▶ Available **self-seal tires** allow you to continue driving after a tire has received a small puncture, with no loss in air pressure.
- ▶ An available **Homelink® Universal Transceiver** lets you control home security systems from within your 300, while a **Sentry Key® Engine Immobilizer** assures that only your keys can operate your 300.

<sup>†</sup>Based on NHTSA 2005 model-year rating.

<sup>‡</sup>Best Pick rating based on an offset-frontal crash at a nominal speed of 40 mph.

<sup>§</sup>Certified to the Federal Regulation for automatic passenger occupant classification. Always use seat belts. Children 12 and under should always be in a backseat correctly using an infant or child restraint system, or the seat belt positioned correctly for the child's age and weight.

<sup>¶</sup>The OCS determines the conditions for activation or deactivation of the passenger-side front air bag based upon the weight of the occupant. It may not activate the air bag if the occupant has incorrect seating posture or is moving in the seat. You should observe the air bag lamp to determine if the OCS is deciding properly. Passengers should sit properly in the seat with the seat belt attached at all times.





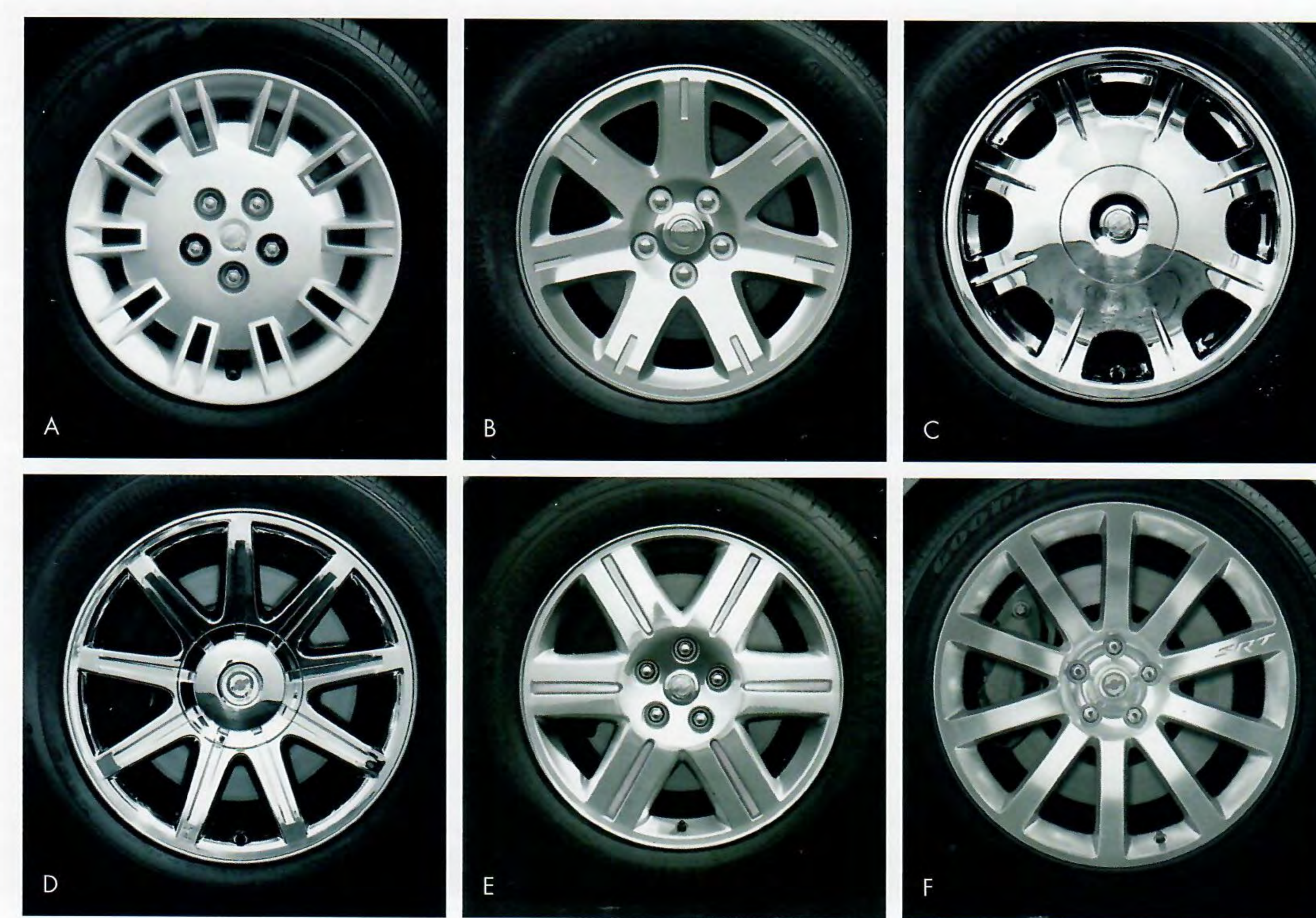


## EXTERIOR COLORS

	Linen Gold Pearl	Bright Silver Metallic	Magnesium Pearl	Brilliant Black Crystal Pearl	Satin Jade Pearl	Cool Vanilla	Midnight Blue Pearl	Silver Steel Metallic
300C SRT8 (Luxury Leather Trim)		1		1				1
300C (Royale Leather Trim)	2,3	2,3	2,3*	2,3	2,3*	2,3*	2,3	2,3
300 Limited (Torino Leather Trim)	4,5	4,5	4,5*	4,5	4,5*	4,5*	4,5	4,5
300 Touring (Torino Leather Trim)	4,5	4,5	4,5*	4,5	4,5*	4,5*	4,5	4,5
300 (Addison Cloth)	6,7	6,7	6,7	6,7	6,7	6,7	6,7	6,7

\*Available Deep Jade/Light Graystone interior trim is limited to Magnesium Pearl, Satin Jade Pearl, and Cool Vanilla.

## INTERIOR COLORS



A) 17-inch bolt-on wheel cover, standard on 300. B) 17-inch machined aluminum wheel, standard on 300 Touring. C) 17-inch chrome-clad aluminum wheel, standard on 300 Limited. D) 18-inch chrome-clad aluminum wheel, standard on 300C. E) 18-inch polished aluminum wheel, standard on AWD models. F) 20-inch forged aluminum wheel, standard on 300C SRT8.



## ACCESSORIES

Authentic Chrysler Accessories by Mopar are the perfect fit for your lifestyle. With a wide selection of original-equipment accessories to choose from, including a Premium Chrome Grille, Cargo Organizers, Entertainment and Navigation systems and Remote Start\*, every experience is enhanced by Mopar. For more information, visit [mopar.com/chrysler](http://mopar.com/chrysler) or see your local Chrysler dealer.

\*Check state and local laws on use of remote starters.



# THE PROOF

The designs have been drawn  
by visionaries to captivate

realists. The interiors are rich in premium comfort, and complete in leading edge technology. The engines deliver both performance and fuel efficiency. Chrysler engineers created vehicles that let you enjoy your independence, realize your aspirations, and express your personal style. And Chrysler vehicles win the admiration of the demanding independent reviewers cited below.



Five-Star NHTSA front-impact crash test rating\*

"Above all the 300 impresses with its grace and sophistication"

— *Motor Trend 2005*

"The new ultimate sedan from Chrysler proves that style, performance, and quality all can be had without having to fire the accountants"

— *Robb Report*

"What matters most, however, is how the engine feels.  
And that, in a word, is fantastic"

— *Road & Track, March 2005*

\*Based on NHTSA 2005 model-year rating.

---

**VISIT YOUR DEALER.** Your Chrysler dealer's knowledgeable and professionally trained staff will guide you through the shopping process with expert advice.

**VISIT CHRYSLER.COM.** Our Web site offers detailed information on all Chrysler products. You can virtually assemble any vehicle you like... choose the model with your favorite color combinations, equipment and features — and then price it all out.

**CALL 1-800-CHRYSLER.** Our friendly and knowledgeable product information specialists are available seven days a week, 8 a.m. — midnight (EST) to answer your questions.





	300	Touring	Limited	300C	300C SRT8
<b>ENGINE/TRANSMISSION</b>					
2.7L DOHC V6/4-speed automatic (rear-wheel drive)	22E				
3.5L SOHC 24V High Output V6/5-speed AutoStick® (rear-wheel drive)		27H	27K		
3.5L SOHC 24V High Output V6/5-speed AutoStick (all-wheel drive)		27H	27K		
5.7L Multi-Displacement HEMI® V8/5-speed AutoStick (rear-wheel drive)				29T	
5.7L Multi-Displacement HEMI V8/5-speed AutoStick (all-wheel drive)				29T	
6.1L SRT HEMI V8/5-speed AutoStick (rear-wheel drive)					21X
<b>MECHANICAL</b>					
<b>Battery-Saver Feature</b> — Enhanced, programmable to turn headlamps off after ignition is turned off, and switches off both switched and non-switched interior lamps	S	S	S	S	S
<b>Brakes</b> — Power four-wheel disc brakes with vented front and solid rear discs (includes antilock feature on Touring and Limited models)	S	S	S		
— Power performance antilock four-wheel disc brakes with vented front and rear discs, and twin-piston front aluminum anodized calipers		S <sup>(1)</sup>	S <sup>(1)</sup>	S	
— High-performance antilock four-wheel disc brakes with vented 14-inch front and 13.8-inch rear discs, includes Brembo Performance 4-piston aluminum anodized calipers					S
<b>Electronic Stability Program</b> — Includes Brake Assist and all-speed traction control (includes antilock brake system on 300)	0	S	S	S	S
<b>Engine Block Heater</b>	0	0	0	0	
<b>Speed Control</b> — Electronic with steering column stalk-mounted controls	S	S	S	S	S
<b>Steering</b> — Power rack-and-pinion	S	S	S	S	
— Performance-tuned power rack-and-pinion					S
<b>Suspension</b> — Short-/long-arm front with lateral links, tension struts and stabilizer bar; independent 5-link rear with stabilizer bar	S	S	S	S	S
— Lowered, performance-tuned with special dampening, spring rates, and larger front and rear stabilizer bars					S
<b>EXTERIOR FEATURES</b>					
<b>Door Handles</b> — Body-color	S	S	S		S
— Bright				S	
<b>Exhaust System</b> — Stainless steel	S	S	S	S	S
— Dual with chrome tips				S	S
<b>Headlamps</b> — Halogen with delay	S	S	S		
— Halogen projector with delay				S	
— Xenon High Intensity Discharge with headlamp washers and delay				0	S
— Time-delay off switch	S	S	S	S	S
— Automatic			S	S	S
— Fog lamps		S	S	S	S
<b>Mirrors</b> — Power, fixed black	S				
— Body-color power heated fixed		S	S		
— Chrome power heated foldaway with memory, driver's auto-dimming and auto-adjust in reverse				S	
— Body-color power heated foldaway with memory, driver's auto-dimming and auto-adjust in reverse					S
<b>Moonroof</b> — Power with express-open/-close feature (included in Luxury Group)		0	0/P	0	0
<b>Spare Tire</b> — Compact (service kit replaces compact spare on 300C SRT8)	S	S	S	S	S
<b>Spoiler</b> — Rear trunk lid					S
<b>Tires</b> — P215/65R17 all-season touring	S	S	S		
— P225/60R18 all-season touring		S <sup>(1)</sup>	<sup>(1)</sup> S <sup>(1)</sup>	S	
— P215/65R17 AST self-sealing (included in Protection Group)	P	p <sup>(2)</sup>	<sup>(1)</sup> p <sup>(2)</sup>		
— P225/60R18 AST self-sealing (included in Protection Group II)				P	
— P245/45ZR20 front and P255/45ZR20 rear high-performance					S
— P245/45ZR20 front and P245/45ZR20 rear all-season performance					0
<b>Wheels</b> — 17" steel with bolt-on covers	S				
— 17" machined aluminum		S			
— 17" chrome-clad aluminum			S		
— 18" chrome-clad aluminum				S	
— 18" polished aluminum (AWD)		S <sup>(1)</sup>	S <sup>(1)</sup>	S <sup>(1)</sup>	
— 20" forged aluminum					S
<b>Windshield Wipers</b> — Variable intermittent	S	S	S		
— Rain-sensing automatic				S	S

	300	Touring	Limited	300C	300C SRT8
<b>INTERIOR FEATURES</b>					
<b>Air Conditioning</b> — Manual Single Zone Temperature Control	S	S			
— Automatic Dual Zone Temperature Control with infrared sensing			S	S	S
<b>Air Filtration</b> — Particulate air filter (included in Protection Group, Protection Group II and in SRT Option Group I)	P	P	P	P	P
<b>Cargo Net</b> — Trunk, envelope design			S	S	S
<b>Climate Control Outlets</b> — Rear, located in the rear of center console	S	S	S	S	S
<b>Console</b> — Floor includes cup holders, coin holder, cassette and CD storage, and rear-seat heat and A/C outlets	S	S	S	S	S
<b>Cup Holders</b> — Front (2) and rear (2)	S	S	S	S	S
<b>Defroster</b> — Electric rear window, front side-window demisters	S	S	S	S	S
<b>Door Locks</b> — Power, includes auto speed-sensitive feature and central locking	S	S	S	S	S
<b>Electronic Vehicle Information Center</b> — Reconfigurable driver-interactive up to 128-function information display with steering wheel-mounted controls			S	S	S
<b>HomeLink® Universal Transceiver</b>			S	S	S
<b>Lighting</b> — Dual front map, front door courtesy, glove box and trunk lamps, rear reading lamps above each door	S	S	S	S	S
<b>Memory System</b> — Controls driver's seat, radio presets, steering column, exterior mirrors and power adjustable pedals (if equipped) — for 2 drivers				S	S
<b>Mirrors</b> — Rearview day/night	S	S			
— Auto-dimming rearview (included with UConnect™)	P	P	S	S	S
— Illuminated visor vanity	S	S	S	S	S
<b>Shift Knob</b> — Urethane	S				
— Leather-wrapped		S	S		S
— Tortoise-shell-style					S
— Genuine California Walnut Wood (included in Luxury Group)			P	0	
<b>Speedometer</b> — Electroluminescent 140-mph primary	S	S	S		
— Electroluminescent 160-mph primary				S	
— Electroluminescent 180-mph primary					S
<b>Steering Column</b> — Tilt/telescoping	S	S	S		
— Power tilt/telescoping with memory				S	S
<b>Steering Wheel</b> — Urethane	S				
— Leather-wrapped (SRT8 includes perforated leather upper trim)		S	S		S
— Tortoise-shell-style trim/leather-wrapped					S
— Genuine California Walnut wood trim/leather-wrapped (included in Luxury Group)			P	0	
— Steering wheel-mounted audio controls			S	S	S
<b>Temperature Display</b> — Outside, located in instrument cluster			S	S	S
<b>Trip Computer</b> — 4-function			S	S	S
<b>Windows</b> — Power with driver one-touch-down	S	S			
— Power with front one-touch-up and -down, and antipinch technology (included in Comfort/Convenience Group)		P	S	S	S
<b>SEATING AND TRIM</b>					
<b>Addison Cloth Interior</b>	S				
<b>Luxury Leather-Trimmed Interior with Perforated Preferred Suede® inserts</b>					S
<b>Luxury Royale Leather-Trimmed Interior</b>				S	
<b>Premium Torino Leather-Trimmed Interior</b>		S	S		
<b>Seating</b> — Front low-back buckets	S	S	S	S	
— Front low-back sport front bucket seats					S
— Power 8-way front-passenger (included in Comfort/Convenience Group)		P	S	S	S
— Heated front seats (included in Comfort/Convenience Group)		P	S	S	S
— Rear contoured 60/40 split-folding bench with armrest and cup holders	S	S	S	S	S
<b>Wood Trim</b> — Genuine California Walnut includes steering wheel upper rim, interior door pull handles and shift knob (included in Luxury Group)			P	0	
<b>ENTERTAINMENT SYSTEMS</b>					
<b>Radios</b> — AM/FM stereo with CD player, changer controls and front auxiliary audio input	S	S	S	S	
— AM/FM stereo with cassette, in-dash 6-disc CD and MP3 player (included in Sound Group, Sound Group II and in Luxury Group)	0/P	P	P	P	S
— AM/FM stereo with in-dash 6-disc CD and MP3 player, integrated DVD-based GPS navigation system with 5.8" display screen — (included in Navigation and Sound Group, Navigation and Sound Group II and SRT Option Group II)			0/P	0/P	P
<b>SIRIUS Satellite Radio</b> — (Included in SRT Option Group II)	0	0	0	0	P



	300	Touring	Limited	300C	300C SRT8
<b>ENTERTAINMENT SYSTEMS (CONTINUED)</b>					
Sound Systems — 4-speaker	S	S			
— 6-speaker			S		
— Boston Acoustics™ 6-speaker with 276-watt digital amplifier (included in Sound Group)	P	P	P	S	S
— Boston Acoustics 8-speaker (subwoofer included) and 368-watt digital amplifier (included in Sound Group II)				P	
— Kicker® SRT High-Performance 13-speaker (8 locations) with 100-watt subwoofer and 322-watt digital amplifier					0
Video Entertainment System (VES®) — DVD system includes 7" screen located in center console armrest, remote control, 2 headsets, and faceplate input jacks (requires AM/FM/cassette/6-disc CD or GPS navigation system)		0	0	0	0
<b>SAFETY AND SECURITY</b>					
Adjustable Pedals — Power	0	0	0		
— With Memory System				0	S
Air Bags <sup>(1)</sup> — Advanced multistage driver and front-passenger with Occupant Classification System	S	S	S	S	S
— Side-impact protection, includes front and rear side-curtain air bags (included in Protection Group, Protection Group II, and in SRT Option Group I)	P	P	P	P	P
Brake-Park Interlock — Prevents automatic transmission from being shifted out of Park unless brake pedal is applied	S	S	S	S	S
Child-Protection Rear Door Locks	S	S	S	S	S
Child Seat Anchor System (LATCH) — Lower child seat anchors and upper tether anchors help ease the installation of compatible aftermarket child seats	S	S	S	S	S
Dynamic Side-Impact Intrusion Protection — Patented design includes steel side-guard door beams and structural body reinforcements	S	S	S	S	S
ParkSense™ Rear Park Assist System <sup>(4)</sup> — Ultrasonic (included in Protection Group II)				P	S
Remote Keyless/Illuminated Entry System — Includes 2 transmitters	S	S	S	S	S
Seat Belts — Height-adjustable 3-point driver and front-passenger with traveling buckles; 3-point lap/shoulder belts at all rear-seat positions and dual-sensitivity locking retractors. Seat-belt pretensioners are also included for front-seat occupants	S	S	S	S	S
Security Alarm			S	S	S
Sentry Key® — Antitheft Engine Immobilizer	S	S	S	S	S
Tire Pressure Monitoring System		S	S	S	S
Trunk Lid Release — Inside emergency release with glow-in-the-dark handle	S	S	S	S	S
UConnect™ Hands-Free Communication System — (Includes auto-dimming rearview mirror on 300 and 300 Touring) (included in SRT Option Group II)	0	0	0	0	P
<b>PACKAGES</b>					
Comfort/Convenience Group — Includes heated front seats, 8-way power passenger seat, and express-up/down front windows		0			
Luxury Group — Includes AM/FM cassette/6-disc CD and MP3 player, 6 Boston Acoustics speakers with 276-watt digital amplifier, moonroof and genuine California Walnut wood trim			0		
Navigation and Sound Group — Includes AM/FM stereo, in-dash 6-disc CD and MP3 player, integrated DVD-based GPS navigation system with 6 Boston Acoustics speakers and 276-watt digital amplifier			0		
Navigation and Sound Group II — Includes AM/FM stereo, in-dash 6-disc CD and MP3 player, integrated DVD-based GPS navigation system with 7 Boston Acoustics speakers with subwoofer and 368-watt digital amplifier				0	
Protection Group — Includes front and rear side-curtain air bags, air filtration system and self-sealing tires	0	0	0		
Protection Group II — Includes front and rear side-curtain air bags, air filtration system, self-sealing tires and ParkSense Rear Park Assist System				0	
Smoker's Group — Includes front ashtray and cigar lighter	0	0	0	0	S
Sound Group — Includes AM/FM cassette/6-disc CD and MP3 player with 6 Boston Acoustics speakers with 276-watt digital amplifier	0	0	0		
Sound Group II — Includes AM/FM cassette/6-disc CD and MP3 player with 8 Boston Acoustics speakers (subwoofer included) and 368-watt digital amplifier				0	
SRT Option Group I — Includes front and rear side-curtain air bags, and air filtration system					0
SRT Option Group II — Includes radio with 6-disc CD player, DVD-based GPS navigation system, SIRIUS Satellite Radio and UConnect Hands-Free Communication System (requires moonroof)					0
"Great American" Package (22F CPOS) — Includes 17" machined aluminum wheels; body-color foldaway, heated, exterior mirrors; Electronic Stability Program with 4-wheel antilock brakes; all-speed traction control; Brake Assist; front and rear side-curtain air bags; AM/FM cassette/6-disc CD and MP3 player with 6 speakers, mini-carbon instrument panel bezel, cargo net, and air filtration	0				

S = Standard. P = Included in package noted in parentheses. 0 = Optional.

<sup>(1)</sup> AWD models only. <sup>(2)</sup> AWD model includes P225/60R18 self-sealing tires. <sup>(3)</sup> Always sit properly in the seat with seat belt fastened. Always observe the front-passenger air bag indicator lamp to determine if the OCS classification is appropriate. Children 12 and under should always be in a backseat correctly using an infant or child restraint system or the seat belt positioned correctly for the child's age and weight. <sup>(4)</sup> Detects most obstacles. As with all electronically controlled systems, care is advised. HomeLink is a registered trademark owned by Johnson Controls, Inc. HEMI and Sentry Key are registered trademarks of DaimlerChrysler Corporation. UConnect and ParkSense are trademarks of DaimlerChrysler Corporation. Preferred Suede is a registered trademark of Milliken & Company. Kicker is a registered trademark of Stillwater Designs and Audio, Inc.

All product illustrations, specifications and competitive comparisons are based upon current information at the time of publication approval. Although descriptions are believed correct, complete accuracy cannot be guaranteed. DaimlerChrysler reserves the right to make changes at any time, without notice or obligation, in prices, specifications, equipment, colors and materials, and to change or discontinue models. Some of the equipment shown or described throughout this catalog is available at extra cost. See your dealer for the latest information.

	300	Touring/Limited	300C	300C SRT8
<b>ENGINE SPECIFICATIONS</b>				
Engine Type	2.7L V6	3.5L High Output V6	5.7L Multi-Displacement HEMI® V8	6.1L SRT HEMI V8
Horsepower (SAE net @ rpm)	190 @ 6,400	250 @ 6,400	340 @ 5,000	425 @ 6,000
Torque (lb-ft @ rpm)	190 @ 4,000	250 @ 3,800	390 @ 4,000	420 @ 4,800
Displacement (cu in)	167	214	345	370
Bore x Stroke (mm)	86x78.5	96x81	99.5x90.9	103x90.9
Valve Train Configuration	DOHC 24-valve	SOHC, 24-valve	Pushrod, 16-valve	Pushrod, 16-valve
Compression Ratio	9.7:1	9.9:1	9.6:1	10.3:1
Final Drive Ratio	3.90:1	3.64/3.07 (AWD)	2.82/3.07 (AWD)	3.06
<b>WEIGHTS AND CAPACITIES</b>				
Fuel Requirement	Unleaded Regular	Unleaded Mid-Grade <sup>(1)</sup>	Unleaded Mid-Grade <sup>(1)</sup>	Unleaded Premium
Fuel Tank Capacity (gal)	18	18/19 (AWD)	19	19
Fuel Economy <sup>(2)</sup> (city/hwy)	21/28	19/27 (RWD)/17/24 (AWD)	17/25 (RWD)/17/24 (AWD)	14/20
Base Curb Weight (lb) (RWD/AWD)	3,721	3,767/4,041	4,046/4,251	4,160
Towing Capacity <sup>(3)</sup> (lb)	1,000	2,000	2,000	Not Recommended

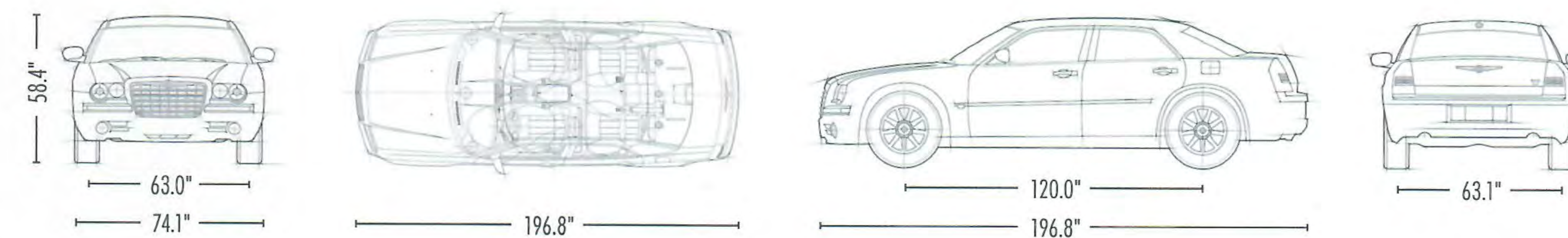
<sup>(1)</sup>Unleaded Mid-Grade Fuel recommended; Unleaded Regular acceptable. <sup>(2)</sup>2005 EPA data. <sup>(3)</sup>When properly equipped.

<b>300C SRT8 PERFORMANCE</b>	
<b>Acceleration</b>	
— 0-60 mph (sec)	Low 5
— 0-100-0 mph (sec)	Under 17
— Standing ¼ mile (sec)	Under 14
— Top Speed (mph)	165-170
Braking — 60-0 (ft)	Approximately 110
Handling — Roadholding (g)	.89
<b>EXTERIOR DIMENSIONS<sup>(1,2)</sup></b>	
Wheelbase	120.0
Overall Length	196.8
Overall Width	74.1
Overall Height	58.4
Track — Front	63.0
— Rear	63.1
Turning Diameter (ft)	38.9

<b>INTERIOR DIMENSIONS<sup>(2)</sup></b>	
<b>Maximum Seating Capacity</b>	
	5
<b>Front</b>	
— Head Room	38.7
— Leg Room	41.8
— Shoulder Room	59.4
— Hip Room	55.9
<b>Rear</b>	
— Head Room	38.0
— Leg Room	40.2
— Shoulder Room	57.7
— Hip Room	55.9
<b>Capacity</b>	
— Passenger Volume (cu ft)	106.6
— Cargo Volume (cu ft)	15.6

<sup>(1)</sup>Based upon 300 dimensions.

<sup>(2)</sup>Dimensions in inches unless otherwise noted.



**Boston Acoustics** An automotive brand first, the available audiophile Boston Acoustics Sound System brings home-quality sound with up to eight speakers into your Chrysler 300.

**Chrysler Financial** **Chrysler Financial**, a member of the DaimlerChrysler Services Group, has flexible payment plans and financing products available for qualified buyers. For information on how Chrysler Financial can work for you, talk with your Chrysler dealer or visit [chryslerfinancial.com](http://chryslerfinancial.com).

**CHRYSLER GIFT GALLERY** **The Chrysler Gift Gallery** pays tribute to the finer things in life. With everything from men's and women's apparel to accessories and collectibles, you're sure to take your style to the next level. View the entire collection of authentic merchandise at [chrysler.com/giftgallery](http://chrysler.com/giftgallery).

**Warranty.** New Chrysler vehicles are covered by a 3-year or 36,000-mile Basic Limited Warranty. See your dealer for a copy of this Limited Warranty. Excludes normal maintenance and wear items.

**CHRYSLER AUTO INSURANCE** **Chrysler Auto Insurance.** The only insurance guaranteed to repair your vehicle using Authentic Chrysler Collision Repair Parts by Mopar — at rates that are tough to beat. For a free quote visit [chryslerautoinsurance.com](http://chryslerautoinsurance.com) or call 1-877-244-1531 and mention ext. #5307 or keycode P7TXXX\*.

**SIRIUS SATELLITE RADIO** "SIRIUS" and the SIRIUS dog logo are registered trademarks of SIRIUS Satellite Radio Inc!

\*Insurance is underwritten by member companies of the American International Group, Inc.

†Monthly subscription may apply. Programming is subject to change. Not available in Hawaii and Alaska. For full Terms and Conditions, visit [sirius.com](http://sirius.com)





**CHRYSLER**



INSPIRATION COMES STANDARD

CHRYSLER.COM

800.CHRYSLER

