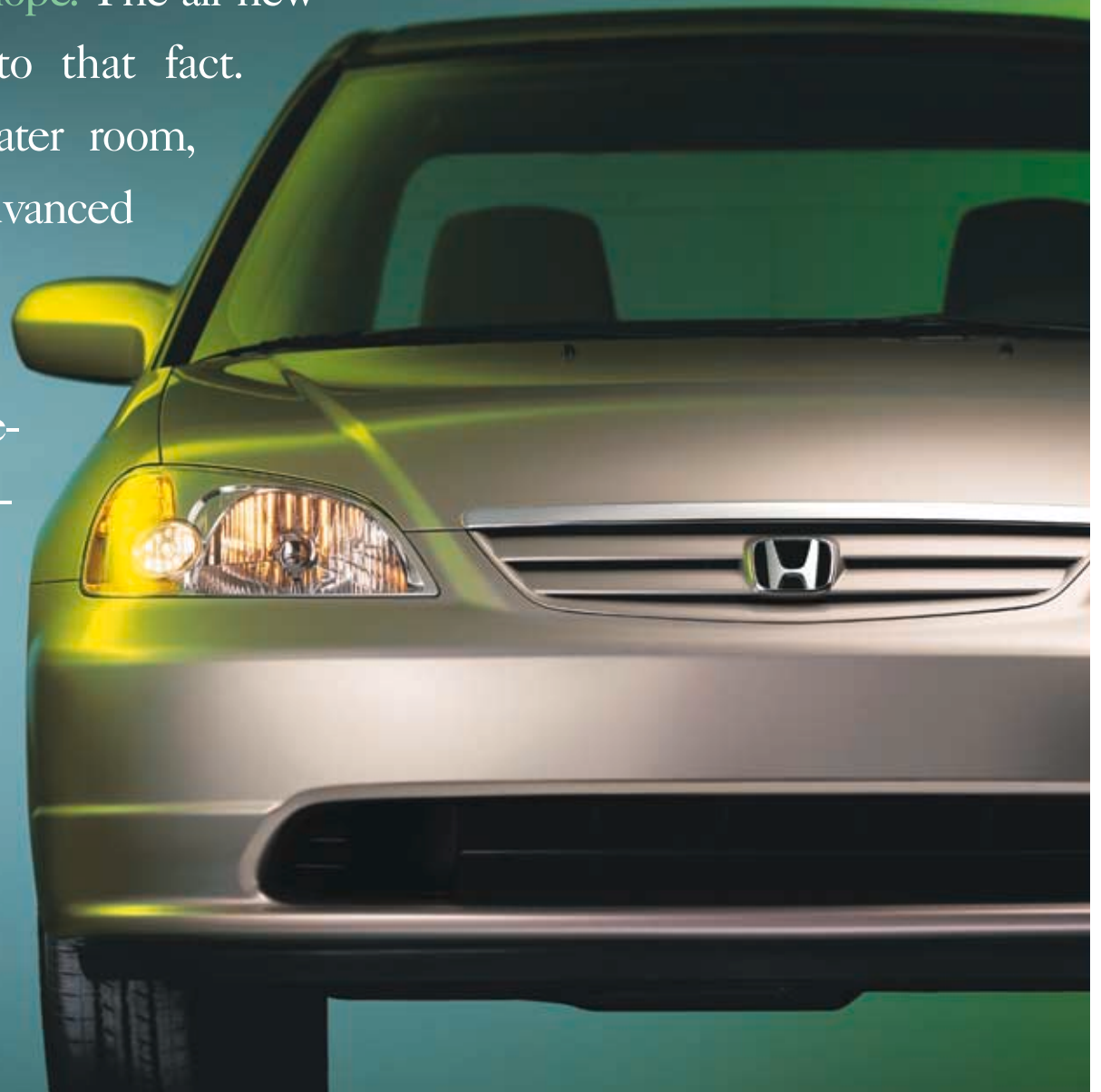




2001
Honda

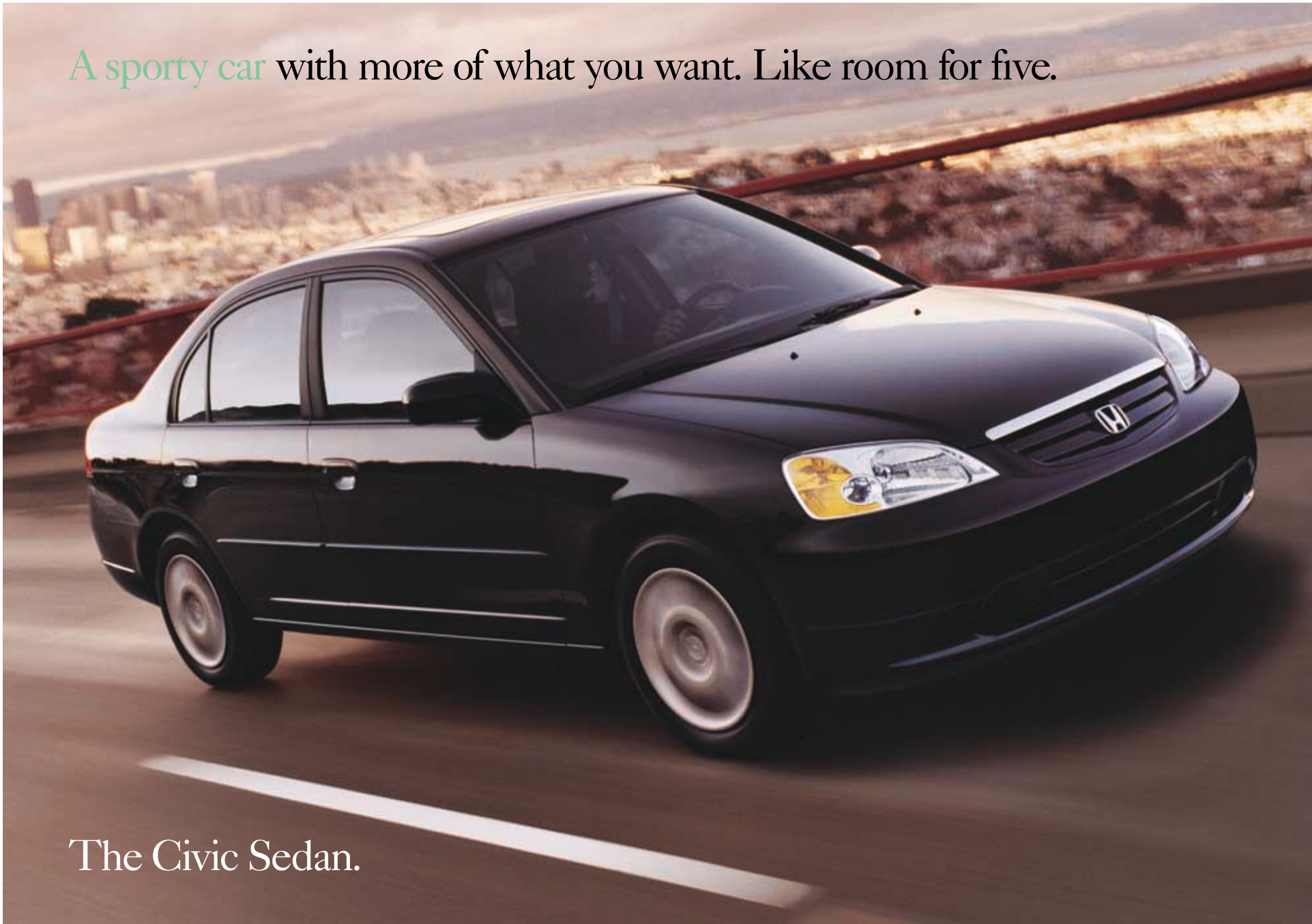
Civic Sedan

It's hard to improve on perfection. However, Honda does have a reputation for pushing the envelope. The all-new Civic Sedan is a testament to that fact. Technical innovations offer greater room, comfort and cargo capacity. Its advanced body structure earned a double 5-star safety rating.† While its distinctive styling is simple elegance defined. It's quick, responsive and more fuel-efficient* than before. Plus, all 2001 Civics are Ultra-Low-Emission Vehicles (ULEV). Refined yet fun to drive. It's Honda ingenuity hard at work. And play.



†NHTSA frontal crash test conducted in October of 2000.
Results useful for comparison with vehicles within 500 lbs. total weight.

A sporty car with more of what you want. Like room for five.



The Civic Sedan.

Civic EX Sedan shown in Nighthawk Black Pearl.

CIVIC DX SEDAN: This well-equipped Civic has a 115-hp, 1.7 liter, 16-valve, 4-cylinder SOHC engine, which is ULEV-rated. A standard 5-speed manual transmission or an available 4-speed automatic transmission with Grade Logic Control. Independent front and rear suspension and a front stabilizer bar. For safety, dual front airbags (SRS), available dual side airbags, 3-point seat belts at all seating positions with front seat belt pretensioners and the rear-seat LATCH (Lower Anchors and Tethers for Children) system. For convenience, you'll find a 60/40 split fold-down rear seatback with lock, AM/FM stereo, Immobilizer Theft-Deterrent System, adjustable steering column and dual remote-operated side mirrors.



CIVIC LX SEDAN: To add to the comfort of your Civic Sedan, the LX also has air conditioning with a micron air-filtration system, cruise control, power windows, mirrors and door locks, an AM/FM stereo cassette, tachometer, illuminated driver's power window switch, body-colored side molding and map lights.

It's all here for the taking.



CIVIC EX SEDAN: The best of the best, this Civic has an impressive 127-hp VTEC™-E engine. It has an anti-lock braking system (ABS), 15" wheels with P185/65 R15 tires, rear stabilizer bar and a remote entry system. An AM/FM stereo CD player with 4 speakers, power moonroof with tilt feature, driver's seat with manual height adjustment, driver's seat-mounted armrest and a rear beverage holder.



Civic EX Sedan shown in Eternal Blue Pearl.

The quick and easy way
to give yourself a **new look.**



Advanced technology
finds a comfortable home.



Civic EX Sedan interior shown in Beige with available dual side airbags and accessory floor mats.



The power moonroof with tilt feature gives you that open-air feeling while improving interior circulation. It comes standard on the Civic EX model.



On the Civic LX and EX sedans, the illuminated driver's power window switch is easier to find when driving at night.



The 60/40 split fold-down rear seatback offers you versatility and the option of taking it all with you. And it's standard on all Civics.

Everything that went into the all-new Civic sets it above the rest. But don't worry, it's not lonely at the top. The Civic Sedan comfortably seats five. And the new seats are wider, with thicker cushions. They're also firmer, with broad backrests to better hold the driver. And they were specially designed to reduce fatigue on long trips. An adjustable steering column offers a personal fit. While on the EX, the driver's seat even has a manual height adjustment for extra comfort. Convenience and luxury are everywhere. Reclining front seatbacks, dual vanity mirrors and storage bins are standard. The LX and EX have a powerful air conditioner with micron air-filtration system to help reduce allergens. Plus power windows, mirrors and door locks, and cruise control. The EX also has a remote entry system and CD player with 4 speakers. Honda-quality ergonomics are evident. Controls are well-placed and easy to reach. And large black-and-white illuminated dials are easy to read. Even the trunk was designed for ease of use with a larger interior and a bigger opening for easy loading and unloading. All told, the 2001 Civic Sedan is a meeting place for ingenuity, style and value. In a word, perfect.



You'll appreciate standard cruise control on the LX and EX. The switches are conveniently placed on the steering wheel to help you keep your hands on the wheel and your eyes on the road.



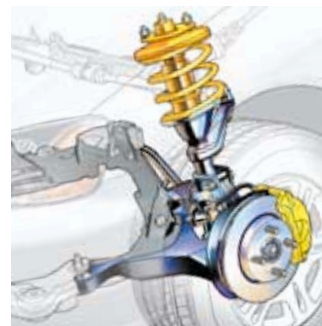
Every Civic comes with two front beverage holders that have been enlarged to hold 20-ounce plastic bottles. The EX also has a rear beverage holder for convenience.

Innovative engineering and attention to detail have propelled the all-new Civic into a class by itself. It's more comfortable, more luxurious and, perhaps most important, roomier than ever before. Honda's engineers were able to figure out a way to expand the interior without greatly increasing the size of the exterior. It was a stroke of genius, some might say. One way they've accomplished this was with a unique flat rear floor that gives you more legroom and footroom. While other ingenious design

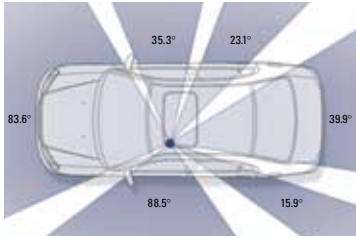


elements add more shoulder room and hiproom. With a car that has this much to offer you, security is a priority. Standard on all Civic models is an Immobilizer Theft-Deterrent System that utilizes a unique electronic signature that is virtually impossible to override. The engine won't start unless your special key is placed in the ignition switch. Advanced technology, combined with superior fit and finish, and many thoughtful refinements reflect the 2001 Civic Sedan's engineering excellence.

Honda is, first and foremost, an engine-building company, driven by technical innovations and **engineering excellence**. In the case of the Civic Sedan, the mission was to build an elegant, roomy car with a focus on performance, safety and value. This was achieved through forward-thinking and a vision, to elevate the all-new Civic to a class of its own. We



accomplished our goal without forgetting the importance of fuel economy and our dedication to the environment. Every Civic model is certified as an Ultra-Low-Emission Vehicle (ULEV) and remains a benchmark in the industry. The Civic Sedan is the embodiment of all the things you expect from Honda. Unsurpassed reliability. Durability. And quality.



The Civic Sedan is designed to provide the driver with **excellent outward visibility**—a fundamental safety feature that is engineered into all Honda automobiles.



Civic LX Sedan shown in Taffeta White.

The Civic Sedan boasts a long list of safety features and has been awarded a **double 5-star safety rating**—the highest possible rating for frontal-impact collisions—by the National Highway Traffic Safety Administration.‡ The Civic's sophisticated new unit-body construction is reinforced with high-strength steel panels to help resist deformation in a full-frontal, offset-frontal, side or rear impact. Steel door beams are designed to help protect the driver and passengers from intrusion into the cabin. Dual-stage driver's and front passenger's airbags (SRS)‡‡ are standard, and all Civics are available with dual side airbags. All seating positions feature 3-point seat belts. The front seat belts have adjustable upper anchors and dual pretensioners. In a moderate-to-severe impact, dual pretensioners tighten the shoulder and lap harnesses to help hold the driver and front passenger in place. The rear seats feature the LATCH (Lower Anchors and Tethers for Children) child-seat mounting system. This new system helps to ensure the correct installation of compatible child seats.

‡NHTSA frontal crash test conducted in October of 2000. Results useful for comparison with vehicles within 500 lbs. total weight.
 ‡‡Honda reminds you and your passengers to always buckle up.



The 2001 Civic Sedan has been awarded a **double 5-star safety rating** for frontal-impact collisions by the National Highway Traffic Safety Administration (NHTSA).

The Sedan's **reinforced unit-body structure, with front and rear crush zones**, strengthened roof pillars and side-impact beams, provides a high level of protection for up to five occupants.

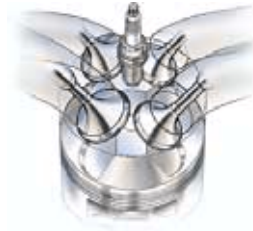


The Civic EX Sedan has a standard **anti-lock braking system (ABS)** to help prevent wheel lockup in hard braking, helping the driver retain steering control in a wide range of road and weather conditions.

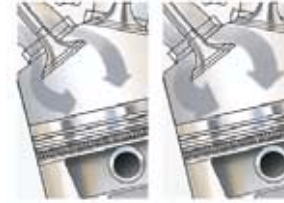




Civic engines are equipped with an **electronically controlled direct ignition system** that provides an intense spark for optimum power and reduced emissions.



All Civic engines utilize **4 valves per cylinder** and pentroof combustion chambers for maximum performance, high fuel efficiency* and greatly reduced emissions.



Honda's **variable valve timing and lift electronic control VTEC-E** technology can be found in Civic EX engines. It allows the engines to produce both low-rpm torque and high-rpm horsepower, maximizing performance.



Civic LX Sedan shown in Vintage Plum Pearl.

Honda's extensive racing heritage yields benefits found in every car we build. Drawing upon this experience, our engineers are able to design and build more responsive, fuel-efficient* engines and suspension systems that make the cars much more fun to drive.



When you look past its smooth exterior and thoughtful interior features, you'll see the influence of racing in the Civic's **advanced engine technology**. For example, Honda's innovative VTEC™-E (variable valve timing and lift electronic control) system helps the Civic EX engine produce a very healthy 127 horsepower and 114 lb.-ft. of torque. VTEC technology provides better torque at low rpm and more power at high rpm. Other examples include Honda's sophisticated PGM-FI electronic fuel-injection system and single overhead camshafts for optimum valve timing and higher performance.

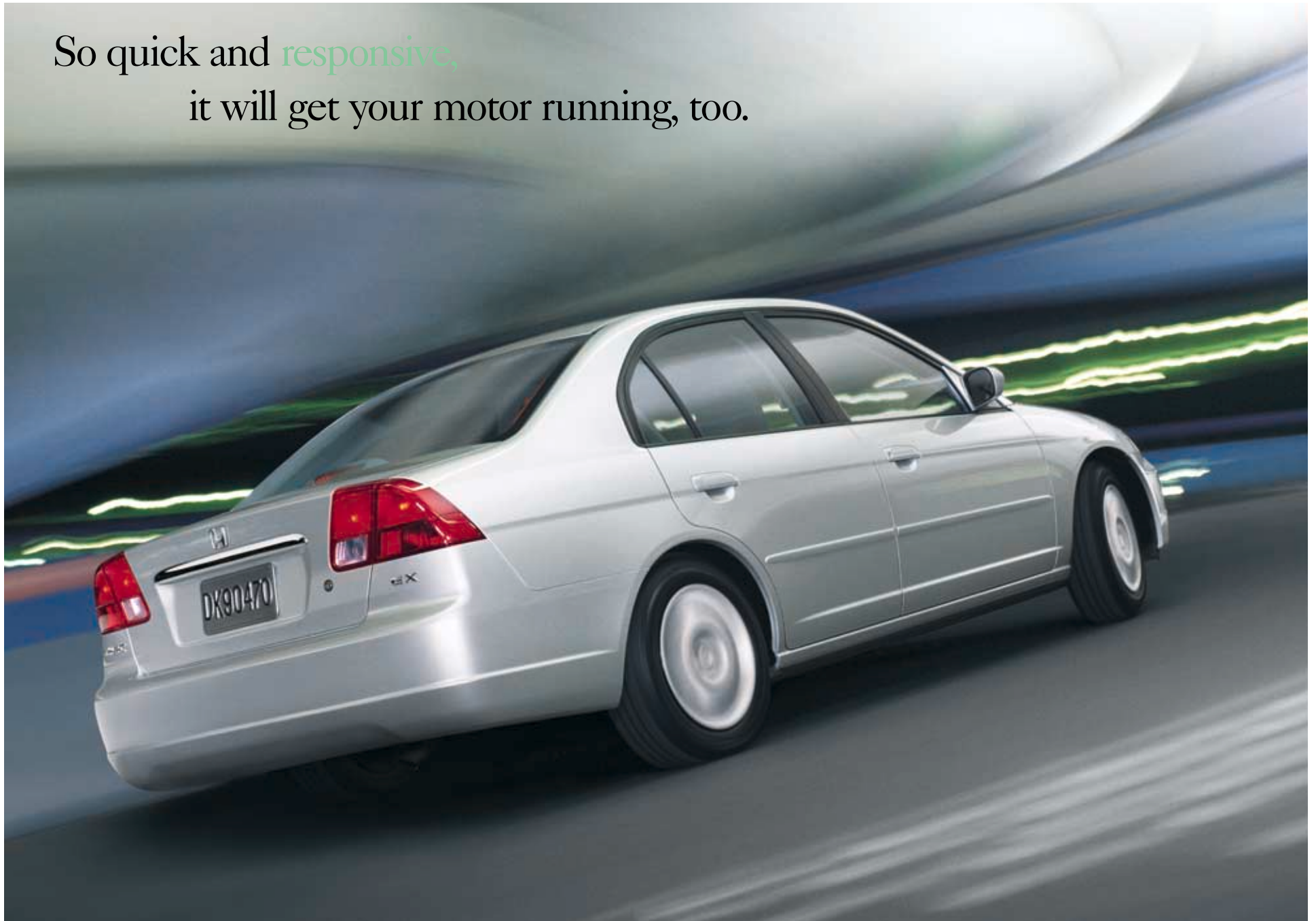
Yet Civic engines require no scheduled tune-ups for their first 105,000 miles‡ and provide exceptional fuel economy.* To help them burn cleaner, there are 4-valve, pentroof combustion chambers, 4-port fuel injectors and a new high-energy electronic direct ignition system. And if that wasn't enough, every Civic engine meets **Ultra-Low-Emission Vehicle (ULEV) standards** for all 50 states. Meaning you can have your power and be responsible, too.



Honda Civic models are equipped with powerful 1.7 liter, 16-valve, 4-cylinder aluminum-alloy engines that meet **Ultra-Low-Emission Vehicle (ULEV) standards** in all 50 states. Low emissions are a high priority on all Honda vehicles.

‡Does not apply to fluid and filter changes. See your owner's manual for details.

So quick and responsive,
it will get your motor running, too.



Civic EX Sedan shown in Satin Silver Metallic.



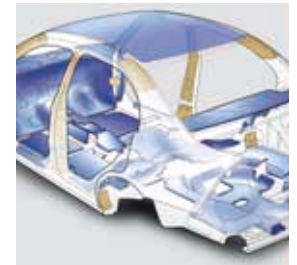
Civic Sedan's **front MacPherson strut and rear double wishbone suspensions** with a high-mounted steering system are designed to absorb bumps without compromising stability for smooth, controlled ride qualities.



Honda Progressive Valve (HPV) shock absorbers automatically adjust to road and driving conditions, providing softer damping over bumps, firm control when cornering and better stability at highway driving speeds.

The 2001 Civic's 4-wheel independent suspension system has been completely re-engineered to give it a **solid, responsive feel**, and a smooth, compliant ride. In front, a newly designed MacPherson strut suspension features an innovative high-mounted steering rack and longer steering arms that enhance steering feel and precision. The steering's variable-assist takes the effort out of maneuvering in tight places, without sacrificing road feel at highway speeds. In back, a highly compact version of Honda's double wishbone rear suspension frees up more space for passengers and cargo and contributes to the Civic's flat rear floor. Special bushings and links in the suspension enhance stability when cornering or braking, and also help isolate the passengers from the harsh effects of bumps and pavement breaks. Honda

Progressive Valve shock absorbers contribute to comfort and stability. A front stabilizer bar adds additional control by helping to minimize body-roll when cornering. And a rear stabilizer bar on EX models contributes to even better handling. Road noise and vibration have been dramatically reduced thanks to the extensive application of advanced sound- and vibration-absorbing materials throughout the body. And special liquid-filled mounts effectively minimize engine vibration. Grade Logic Control in the Civic's available 4-speed automatic transmission provides additional **smoothness, as well as performance**, by downshifting and holding a lower gear on uphill and downhill grades, eliminating the "gear hunting" found in numerous automatic transmissions.



Road and engine vibrations are **insulated** from the passenger cabin through the clever use of a front subframe, liquid-filled engine mounts and sound-absorbent materials applied throughout the body and interior structure.



For years, **Honda has led the industry** in reducing the impact automobiles have on the environment. Proving that it can be done with little sacrifice to performance. In 1975, we introduced the innovative Civic CVCC, the first car to pass the federal Clean Air Act standards without the use of a catalytic converter. Ever since, our engineers have pushed the limits of design. When California's standards for Low-, Ultra-



Low- and Super Ultra-Low-Emission Vehicles (LEV, ULEV and SULEV) were introduced over the past seven years, a Honda was the first gasoline-powered car to meet each one. In fact, we have met these government standards before they

were mandatory. While all Civics are now ULEV or better, every Honda does its part. From the natural-gas Civic GX, the cleanest internal combustion production-engine vehicle ever built, to the LEV-rated 240-hp S2000 roadster. With our track

record, it's only fitting that we would



be the first to introduce a gasoline-electric-powered hybrid car in the United States: the Insight. This ultra-low-emission vehicle

was the first car to receive the **Excellence in Environmental Engineering Award** from the Sierra Club. Honda will continue to lead the way in providing you with some of the most advanced and cleanest vehicles on the road today.



When you buy a new Honda, a team of dedicated professionals is standing by to assist you. Your dealer can help personalize



your Honda with a wide assortment of Genuine Honda Accessories. Have them installed at the time

of purchase and they're covered by the 3-year/36,000-mile limited warranty.[†] And our Honda-trained technicians are highly experienced experts, ready to help you keep your vehicle in top shape. If you have questions, call 1-800-33-HONDA. Or visit our Web site at www.honda.com to get all the latest information, including product specifications, prices, photos and more. You can even obtain a price quote, apply for financing and check dealer inventories by simply clicking through to eHonda.com.

HONDA Finance

If you want quality service and dependable nationwide support, turn to **American Honda Finance Corporation**. They can assist you with your next purchase of a Honda automobile or product.



Your new Civic will be even more impressive with the addition of **5-spoke alloy wheels**. They're handsome, finely crafted and the perfect way to help give your car that one-of-a-kind look.

HONDA Care

Honda Care is a comprehensive, affordable vehicle and travel protection plan that is backed by Honda reliability, service and parts. Check with your dealer for additional information.

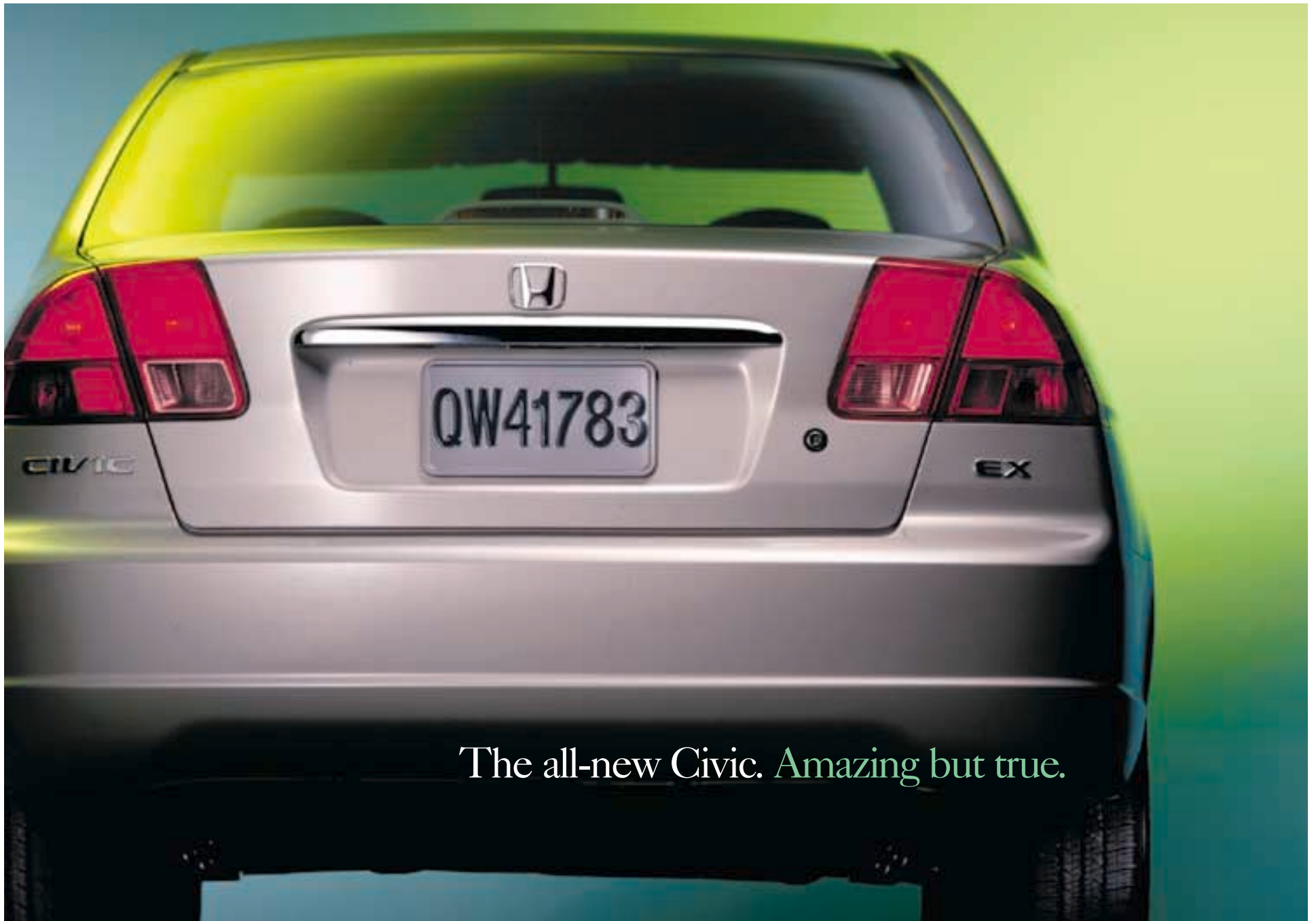


You can enjoy listening to all your favorite music on our convenient **6-disc in-dash CD changer**. It can hold up to six discs at one time, and you'll appreciate not having to go to the trunk to change a CD.

Other available accessories:

- Air Conditioning
- CD Changer
- CD Player
- Cassette Player
- Remote Entry/Security System
- Rear Wing Spoiler
- Floor Mats
- Armrest, Driver's Side
- Splash Guards
- Trim Kits
- Console Kits (A/T only)
- Fenderwell Trim
- Trunk Tray
- All-Season Floor Mats

Visit your Honda dealer or honda.com for a complete list of accessories.



The all-new Civic. *Amazing but true.*

Honda²⁰⁰¹ Civic Sedan

Specifications and Features

Engine	DX	LX	EX
Type: Aluminum-Alloy In-Line 4	•	•	•
Displacement (cc)	1668	1668	1668
Horsepower @ rpm (SAE net)	115 @ 6100	115 @ 6100	127 @ 6300
Torque (lb.-ft. @ rpm)	110 @ 4500	110 @ 4500	114 @ 4800
Compression Ratio	9.5:1	9.5:1	9.9:1
Valve Train: 16-Valve SOHC	•	•	VTEC™-E
Fuel System: Multi-Point Fuel Injection	•	•	•
Ignition System: Direct w/Immobilizer	•	•	•

Drivetrain

Type: Front-Wheel Drive	•	•	•
Manual Transmission: 5-Speed	•	•	•
Automatic Transmission: 4-Speed (available)	•	•	•
Final Drive Ratio (MT/AT)	4.11/4.07	4.11/4.07	4.41/4.36

Body/Suspension/Chassis

Body Type: Unit Body	•	•	•
Suspension: Front MacPherson Strut/ Rear Double Wishbone	•	•	•
Stabilizer Bar (mm, front/rear)	25.4/NA	25.4/NA	25.4/12.0
Power Rack & Pinion Steering	•	•	•
Turning Diameter, Curb-to-Curb (ft.)	34.1	34.1	34.1
Power-Assisted Front Disc/Rear Drum Brakes	•	•	•
Anti-Lock Braking System (ABS)			•
Wheels	14" w/Full Covers	14" w/Full Covers	15" w/Full Covers
Tires: All-Season	P185/70 R14 87S	P185/70 R14 87S	P185/65 R15 86H

Exterior Dimensions

Wheelbase (in.)	103.1	103.1	103.1
Length (in.)	174.6	174.6	174.6
Height (in.)	56.7	56.7	56.7
Width (in.)	67.5	67.5	67.5
Track (in., front/rear)	57.9/57.9	57.9/57.9	57.9/57.9
Curb Weight (lbs., MT/AT)	2421/2471	2465/2515	2564/2615

Interior Dimensions

Headroom (in., front/rear)	39.8/37.2	39.8/37.2	38.0/36.3
Legroom (in., front/rear)	42.2/36.0	42.2/36.0	42.2/36.0
Shoulder Room (in., front/rear)	52.6/52.0	52.6/52.0	52.6/52.0
Hiproom (in., front/rear)	51.2/49.8	51.2/49.8	51.2/49.8
Cargo Volume (cu. ft.)	12.9	12.9	12.9
Passenger Volume (cu. ft.)	91.4	91.4	88.1

Exterior/Interior Colors

Clover Green Pearl/Beige	•	•	•
Vintage Plum Pearl/Beige		•	•
Taffeta White/Gray	•	•	
Titanium Metallic/Beige		•	•
Nighthawk Black Pearl/Gray	•	•	•
Eternal Blue Pearl/Gray			•
Satin Silver Metallic/Gray	•	•	•

Exterior Features	DX	LX	EX
Power Moonroof w/Tilt Feature			•
Integrated Rear-Window Antenna	•	•	•
Remote Entry System		Accessory	•
Dual Manual Remote-Operated Mirrors	•		
Dual Power Mirrors		•	Body-Colored
Impact-Absorbing Body-Colored Bumpers	•	•	•
Body Side Molding	•	Body-Colored	Body-Colored
Tinted Glass	•	•	•
Front Air Spoiler	•	•	•

Interior Features

Air Conditioning w/Micron Air-Filtration System	Accessory	•	•
Power Windows w/Auto-Down Driver's Window		Illuminated Driver's Switch	Illuminated Driver's Switch
Power Door Locks		•	•
AM/FM Stereo w/Clock (4x20-watt) and 4 Speakers	•	w/Cassette	
AM/FM Stereo CD Player w/Clock (4x30-watt) and 4 Speakers			Anti-Theft
Cruise Control		•	•
Driver's and Front Passenger's Airbags (SRS)	•	•	•
Dual Side Airbags	Available	Available	Available
3-Point Seat Belts at All Seating Positions	•	•	•
Adjustable Front Seat Belt Anchors	•	•	•
Lower Anchors and Tethers for Children (LATCH)	•	•	•
Child-Proof Rear Door Locks	•	•	•
Adjustable Steering Column	•	•	•
Driver's Seat w/Manual Seat Height Adjust			•
Reclining Front Seatbacks	•	•	•
Adjustable Front-Seat Head Restraints	•	•	•
60/40 Split Fold-Down Rear Seatback w/Lock	•	•	•
Beverage Holders	Front	Front	Front and Rear
Driver's Armrest	Accessory	Accessory	•
Cargo Area Light	•	•	•
Map Lights		•	•
2-Speed/Intermittent Windshield Wipers	•	•	•
Maintenance Interval Indicator	•	•	•
Remote Fuel Filler Door Release	•	•	•
Remote Trunk Release w/Lock	•	•	•
Low-Fuel Indicator Light	•	•	•
Headlights-On Reminder	•	•	•
Tachometer		•	•
Trip Odometer	•	•	•
Rear-Seat Heater Ducts	•	•	•
Driver's and Front Passenger's Vanity Mirrors	•	•	•

EPA Mileage Estimates*/Fuel Capacity

5-Speed Manual (City/Highway)	32/39	32/39	32/37
4-Speed Automatic (City/Highway)	30/38	30/38	31/38
Fuel (gal.)	13.2	13.2	13.2

*Mileage figures shown for comparison only. Actual mileage may vary. **13-Year/36,000-Mile Limited Warranty:** Ordinary maintenance or adjustments, parts subject to normal wear and replacement, and certain items are excluded. See your Honda dealer for the terms and conditions of this limited warranty. **Always use seat belts and appropriate child seats. Children are safest in the rear seat.** Some features mentioned herein are not available in all areas. See your Honda dealer for details. Some vehicles may be shown with optional equipment. Available=Optional. NA=Not applicable. Specifications, features, illustrations and equipment shown in this brochure are based upon the latest available information at the time of printing. Although descriptions are believed correct, accuracy cannot be guaranteed. American Honda Motor Co., Inc., reserves the right to make changes at any time, without notice or obligation, in colors, specifications, accessories, materials and models.



HONDA

honda.com

1-800-33-HONDA



Accord Sedan



Accord Coupe



Civic Sedan



Civic Coupe



S2000



Prelude



Odyssey



Passport



CR-V



Insight