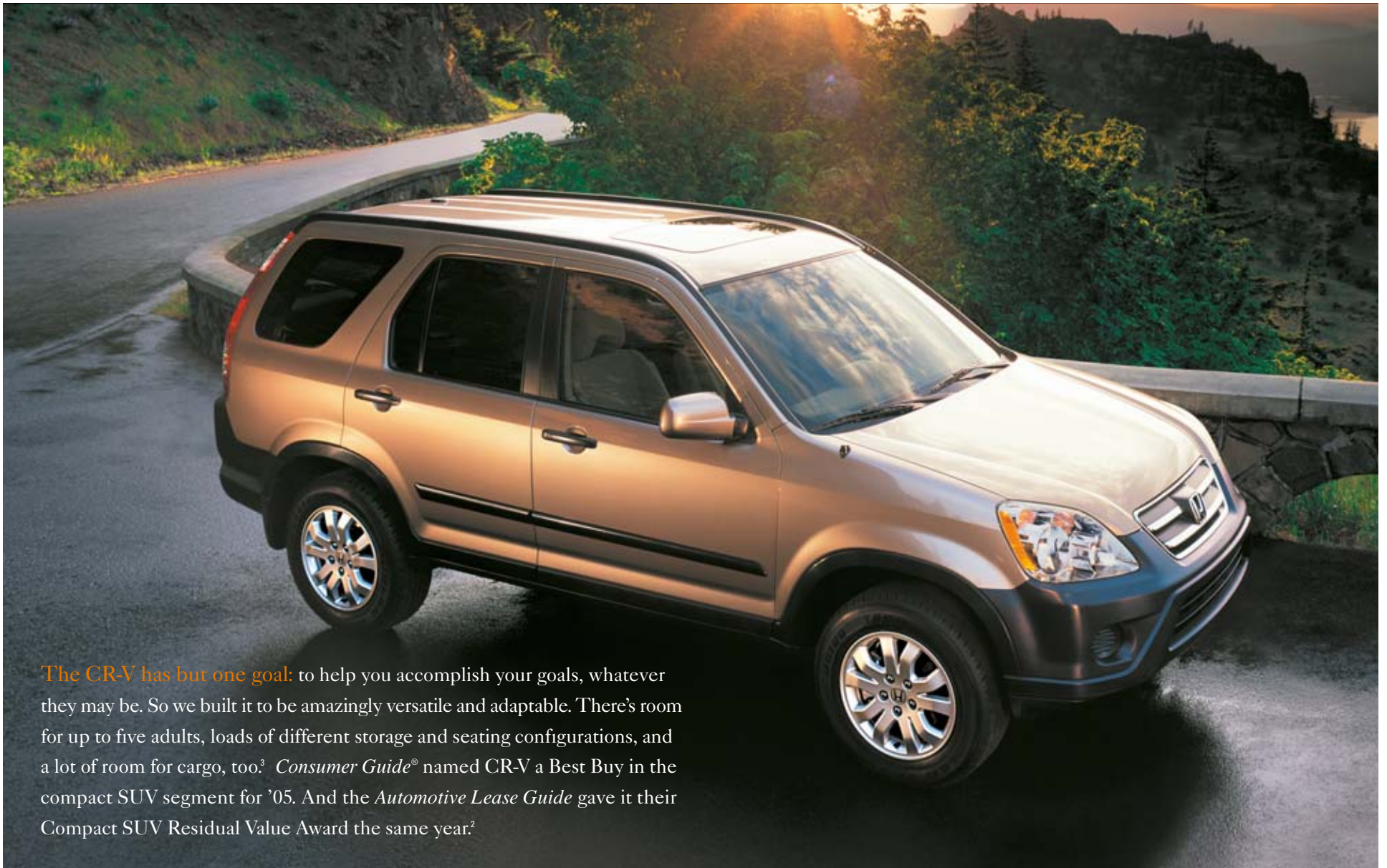


Honda

06 CR-V



The CR-V has but one goal: to help you accomplish your goals, whatever they may be. So we built it to be amazingly versatile and adaptable. There's room for up to five adults, loads of different storage and seating configurations, and a lot of room for cargo, too.³ *Consumer Guide*[®] named CR-V a Best Buy in the compact SUV segment for '05. And the *Automotive Lease Guide* gave it their Compact SUV Residual Value Award the same year.²

Engineering	2WD LX	2WD EX	4WD LX	4WD EX/SE
Engine Type	In-Line 4-Cylinder	In-Line 4-Cylinder	In-Line 4-Cylinder	In-Line 4-Cylinder
Engine Block/Cylinder Head	Aluminum-Alloy	Aluminum-Alloy	Aluminum-Alloy	Aluminum-Alloy
Displacement (cc)	2354	2354	2354	2354
Horsepower @ rpm (SAE net, Rev 8/04)*	156 @ 5900	156 @ 5900	156 @ 5900	156 @ 5900
Torque (lb.-ft. @ rpm)*	160 @ 3600	160 @ 3600	160 @ 3600	160 @ 3600
Valve Train	16-Valve DOHC i-VTEC®	16-Valve DOHC i-VTEC®	16-Valve DOHC i-VTEC	16-Valve DOHC i-VTEC
Multi-Point Fuel Injection	•	•	•	•
Drive-by-Wire Throttle System™	•	•	•	•
Real Time™ 4-Wheel Drive	•	•	•	•
CARB Emissions Rating	LEV-2	LEV-2	LEV-2	LEV-2
Direct Ignition System with Immobilizer	•	•	•	•
110,000-Mile Tune-Up Interval†	•	•	•	•
Transmissions				
5-Speed Manual Transmission (Standard)				EX
5-Speed Automatic Transmission (Available)				EX
5-Speed Automatic Transmission (Standard)	•	•	•	SE
Body/Suspension/Chassis				
Unit-Body Construction	•	•	•	•
MacPherson Strut Front Suspension	•	•	•	•
Multi-Link Double Wishbone Rear Suspension	•	•	•	•
Stabilizer Bar (mm, front/rear)	27.2/14.0	27.2/14.0	27.2/14.0	27.2/14.0
Variable Power-Assisted Rack-and-Pinion Steering	•	•	•	•
Power-Assisted 4-Wheel Disc Brakes	•	•	•	•
Wheels	16" Styled Steel	16" Styled Alloy	16" Styled Steel	16" Alloy
All-Season Tires	P215/65 R16 (M+S)	P215/65 R16 (M+S)	P215/65 R16 (M+S)	P215/65 R16 (M+S)
Exterior Measurements				
Wheelbase (in.)	103.3	103.3	103.3	103.3
Length (in.)	181.0	181.0	181.0	181.0/181.8
Height (in.)	66.2	66.2	66.2	66.2
Width (in.)	70.2	70.2	70.2	70.2
Track (in., front/rear)	60.4/60.8	60.4/60.8	60.4/60.8	60.4/60.8
Minimum Ground Clearance (in.)	8.1	8.1	8.1	8.1
Curb Weight (lbs., MT/AT)	NA/3318	NA/3349	NA/3428 NA/3494 (SE)	3406/3472 (EX)
Towing Capacity (lbs.)	1500	1500	1500	1500
Interior Measurements				
Headroom (in., front/rear)	40.9/39.1	38.9/39.1	40.9/39.1	38.9/39.1
Legroom (in., front/rear)	41.3/39.4	41.3/39.4	41.3/39.4	41.3/39.4
Shoulder Room (in., front/rear)	56.9/56.5	56.9/56.5	56.9/56.5	56.9/56.5
Hiproom (in., front/rear)	54.5/53.5	54.5/53.5	54.5/53.5	54.5/53.5
Cargo Volume³ (cu. ft., seat up/down)	33.5/72.0	33.5/72.0	33.5/72.0	33.5/72.0
Passenger Volume (cu. ft.)	106.0	103.3	106.0	103.3
Seating Capacity	5	5	5	5
EPA Mileage Estimates⁴/Fuel Capacity				
5-Speed Manual (City/Highway)				21/26 (EX)
5-Speed Automatic (City/Highway)	23/29	22/27	22/27	22/27
Fuel (gal.)	15.3	15.3	15.3	15.3
Seating				
Driver's Seat with Manual Height Adjustment	•	•	•	•
60/40 Split Sliding Fold & Tumble Rear Seats	•	•	•	•
Reclining Front and Rear Seatbacks	•	•	•	•
Head Restraints at All Seating Positions	•	•	•	•
Leather-Trimmed Seats and Door-Panel Inserts				SE
Heated Front Seats				SE
Audio Systems				
AM/FM/CD/Cassette Audio System with 4 Speakers	•		•	
AM/FM/XM Ready®/6-Disc In-Dash CD Changer/Cassette Audio System with 6 Speakers		•		•

*Horsepower and torque calculations reflect new SAE J1349 procedures revised August, 2004.
†Does not apply to fluid and filter changes. See your owner's manual for details.

Safety	2WD LX	2WD EX	4WD LX	4WD EX/SE
3-Point Seat Belts at All Seating Positions	•	•	•	•
Front 3-Point Seat Belts with Automatic Tensioning System	•	•	•	•
Adjustable Front Seat Belt Anchors	•	•	•	•
Dual-Stage, Dual-Threshold Front Airbags (SRS)	•	•	•	•
Front Side Airbags with Passenger-Side Occupant Position Detection System (OPDS)	•	•	•	•
Side Curtain Airbags with Rollover Sensor	•	•	•	•
Anti-Lock Braking System (ABS)	•	•	•	•
Electronic Brake Distribution (EBD)	•	•	•	•
Vehicle Stability Assist (VSA®) with Traction Control	•	•	•	•
Brake Assist	•	•	•	•
Side-Impact Door Beams	•	•	•	•
Lower Anchors and Tethers for Children (LATCH)	•	•	•	•
Child-Proof Rear Door Locks	•	•	•	•
Immobilizer Theft-Deterrent System	•	•	•	•
Comfort & Convenience				
Air Conditioning with Air-Filtration System	•	•	•	•
Power Windows with Auto-Up/Down Driver's Window	•	•	•	•
Power Door and Tailgate Locks	•	•	•	•
Cruise Control	•	•	•	•
Leather-Wrapped Steering Wheel				SE
Steering Wheel-Mounted Audio Controls		•		•
Retractable Center Tray Table	•	•	•	•
Driver's and Front Passenger's Vanity Mirrors	•	•	•	•
Sunglasses Holder	•	•	•	•
Adjustable Steering Column	•	•	•	•
Beverage Holders, Front and Rear	•	•	•	•
12-Volt Power Outlets, Front and Rear	•	•	•	•
Rear Window Defroster	•	•	•	•
Rear-Seat Heater Ducts	•	•	•	•
Floor Mats	•	•	•	•
Removable Folding Picnic Table	•	•	•	•
Waterproof Rear Storage Well	•	•	•	•
Cargo Area Tie-Down Anchors (4 total)	•	•	•	•
Cargo Area Hooks	•	•	•	•
Cargo Area Light	•	•	•	•
Remote Glass Hatch Release	•	•	•	•
Exterior Features				
Power Moonroof with Tilt Feature		•		•
Remote Entry System	•	•	•	•
Multi-Reflector Halogen Headlights	•	•	•	•
2-Speed/Intermittent Windshield Wipers	•	•	•	•
Heat-Rejecting Green-Tinted Glass	•	•	•	•
Power Side Mirrors	•	Body-Colored	•	Body-Colored
Heated Power Side Mirrors				SE
Alloy Wheels	Accessory	Including Spare	Accessory	Including Spare
Body Side Molding	•	•	•	Body-Colored on SE
Body-Colored Bumpers and Door Handles				SE
Full-Swinging Tailgate Door with Integrated Glass Hatch	•	•	•	•
Tailgate-Mounted Full-Size Spare Tire with Cover	•	•	•	•
Body-Colored Hard Spare Tire Cover				SE
Rear Privacy Glass		•		•
Instrumentation				
Tachometer	•	•	•	•
Exterior Temperature Indicator		•		•
Door-/Tailgate-Open Indicator	•	•	•	•
Low-Fuel and Oil-Pressure Indicators	•	•	•	•



CR-V EX SPORT PACKAGE

This dealer-installed package pumps even more sporty style into your new CR-V. It includes a roof rack, twin fog lights and a pair of tough, handsome running boards.



CR-V LX CONVENIENCE PACKAGE

This is a quick and easy way to add a healthy dose of extra value to your CR-V purchase, with 16" alloy wheels, a cargo cover and a center armrest.

¹ Required XM subscription sold separately after three trial months. All fees and programming subject to change. Subscriptions subject to Customer Agreement available at xmradio.com. Standard audio system is pre-wired to accept the dealer-installed accessory XM Satellite Radio hardware. XM service only available in the 48 contiguous United States. The XM name and XM Ready are registered trademarks of XM Satellite Radio Inc. ² 2005 Consumer Guide, Consumer Guide® is a registered trademark of Publications International, Ltd. 2005 Automotive Lease Guide. ³ Carrying too much cargo or improperly storing it can affect the handling, stability and operation of this vehicle. Before carrying any cargo, be sure to consult the owner's manual for load limits and loading guidelines. ⁴ Based on 2006 EPA mileage estimates. Use for comparison purposes only. Actual mileage may vary. ⁵ Union of Concerned Scientists: 2004. ⁶ **3-Year/36,000-Mile Limited Warranty. 5-Year/60,000-Mile Limited Powertrain Warranty.** Ordinary maintenance or adjustments, parts subject to normal wear and replacement, and certain items are excluded. See your Honda dealer for the terms and conditions of the limited warranties. **Always use seat belts and appropriate child seats. Children 12 and under are safest when properly restrained in the rear seat.** Specifications, features, illustrations and equipment shown in this brochure are based upon the latest available information at the time of printing. Although descriptions are believed correct, accuracy cannot be guaranteed. American Honda Motor Co., Inc., reserves the right to make changes at any time, without notice or obligation, in colors, specifications, accessories, materials and models. Some features mentioned herein are not available in all areas. See your Honda dealer for details. Some vehicles may be shown with optional equipment. Available = Optional. NA = Not applicable. All images contained herein are either owned by American Honda Motor Co., Inc., or used under a valid license. It is a violation of federal law to reproduce these images without express written permission from American Honda Motor Co., Inc., or the individual copyright owner of such images. Honda Financial Services is a DBA of American Honda Finance Corporation. Honda, the H-mark symbol, Honda Care, Drive-by-Wire Throttle System, i-VTEC, Real Time and VSA are trademarks of Honda Motor Co., Ltd. © 2005 American Honda Motor Co., Inc.



Your dealer's team of trained technicians is at the ready to help keep your Honda in superb shape. All 2006 Honda vehicles—and any Genuine Honda Accessories installed at the time of purchase—are covered by the 3-year/36,000-mile New-Vehicle Limited Warranty.⁶

Plus, Honda cars and trucks are covered by a 5-year/60,000-mile Limited Powertrain Warranty, too. For more information or assistance, see your Honda dealer or please give us a call at 1-800-33-Honda.

HONDA

Financial Services

Whether you buy or lease a Honda vehicle, Honda Financial Services can assist you with the process. Please ask your dealer which lease or purchase plan best suits your needs.

HONDA Care

Honda Care™ is a highly affordable, comprehensive vehicle and travel protection plan backed by Honda reliability, service and parts. Please see your dealer for all the details.