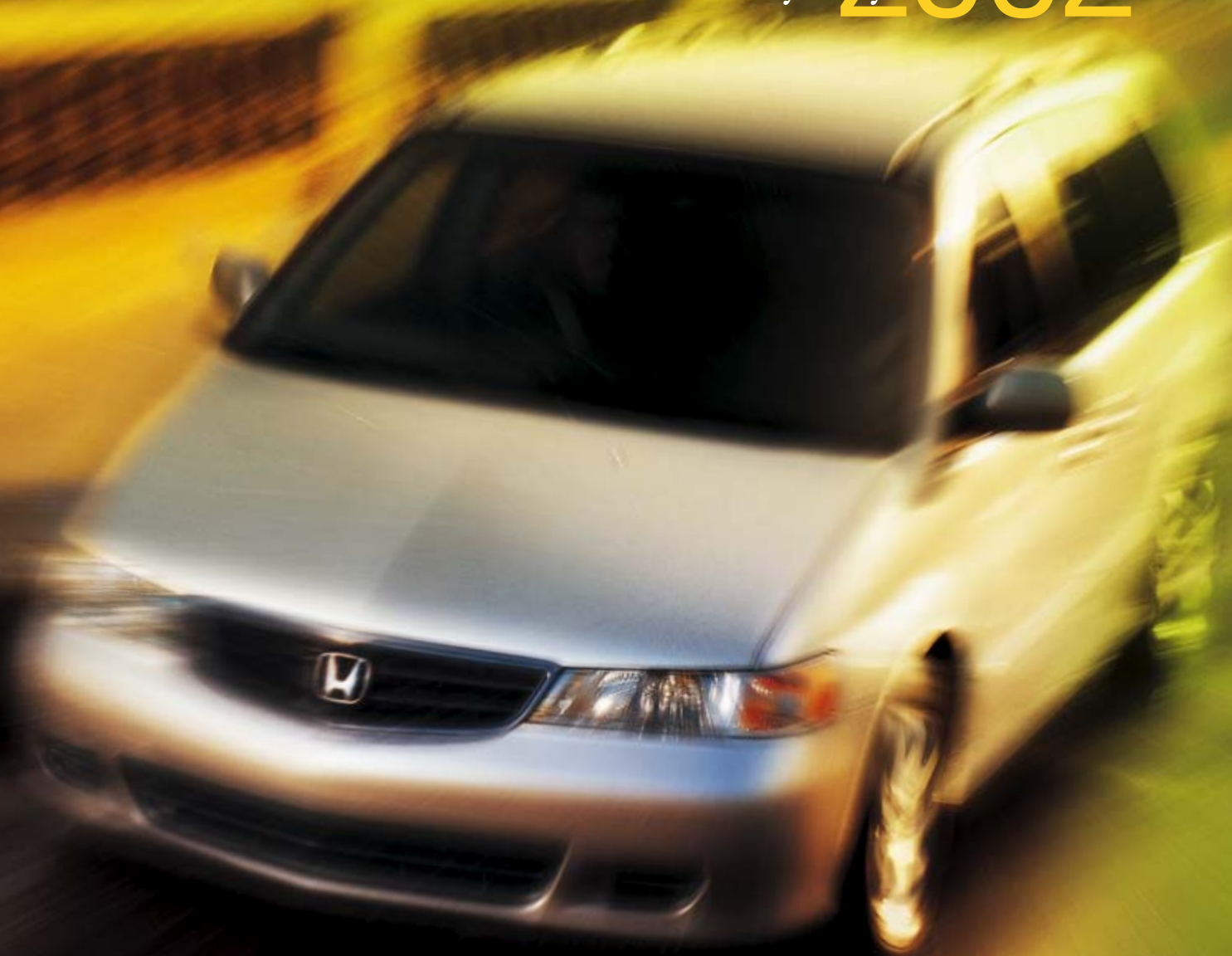



Honda Odyssey 2002



A tribute to Honda ingenuity, Odyssey continues

to offer one innovation after another. Named “Best Minivan” by *Automobile Magazine*,  its 240-hp engine now makes it more powerful than ever. And this year, its long list of features includes dual side airbags, available leather-trimmed upholstery and a state-of-the-art Honda DVD Entertainment System. Built with legendary Honda quality, Odyssey is a benchmark in the industry. With just one drive, you'll see minivan performance, comfort, safety and versatility in a whole new light.



Life is full of tough choices. But here's one you'll truly enjoy.



ODYSSEY LX

- 240-hp, 3.5-liter, VTEC™ V-6 engine
- 5-speed automatic transmission
- 4-wheel independent suspension
- Anti-lock braking system (ABS)
- Traction Control System (TCS)
- Dual-stage front airbags (SRS)
- Dual side airbags
- Retractable 3rd-row Magic Seat™
- Front/rear air conditioning
- Power windows, mirrors and door and tailgate locks
- Dual sliding doors
- Immobilizer Theft-Deterrent System



ODYSSEY EX

- All LX features, plus:
- Dual power sliding doors
- Automatic climate control
- AM/FM stereo CD player w/6 speakers
- Driver's seat w/8-way power adjustment
- HomeLink® remote system¹
- Remote entry system
- Steering wheel-mounted audio controls
- 16" alloy wheels
- Roof rails
- Auto-off headlights



ODYSSEY EX WITH LEATHER

- All EX features, plus:
- Leather-trimmed interior
- Heated front seats
- Available* Honda Satellite-Linked Navigation System™ w/DVD database of maps for major U.S. metropolitan areas
- Available* Honda DVD Entertainment System featuring DVD player, 7-inch adjustable ceiling-mounted screen, remote control, two sets of wireless headphones and video-game jacks

*The factory-installed Honda Satellite-Linked Navigation System and Honda DVD Entertainment System are not available together on the same Odyssey EX with Leather. See dealers for details.

Look.

Sophistication and real versatility

have found common ground in the new Odyssey. And if you lift the flap, you'll find this concept expressed in three delightful versions. See for yourself. Through innovative design, Honda has created something totally unique, a true original: Odyssey.



page 1

Feel.

Odyssey's comfort level

goes far, far beyond what you'd normally expect from a minivan. Its car-like ride and relaxing environment make it seem like you're in a living room on wheels.



page 6

Drive.

Like a fine sedan,

Odyssey combines ample power with a smooth ride and responsive handling. And how is this possible? The answer lies in Honda technology and over four decades of racing expertise.



page 11

Dream.

Imagine a cleaner world

in which vehicles are friendlier to the environment and Earth's natural resources are regarded as precious indeed. Honda's making it a reality—thanks to the power of dreams.



page 16

Run with it.



Odyssey EX shown in Mesa Beige Metallic.



The moment you get behind the wheel of an Odyssey, you realize that it takes you far beyond mere comfort. Now available with an elegant **leather-trimmed interior and added amenities, it positively pampers you.**

Seated up high, behind the wheel, you enjoy a commanding view of the road. Instruments and controls are all well-designed and easily accessible.

Its seats are exceptionally supportive. And no matter what's on the itinerary, a carpool or a weekend getaway, you always feel relaxed, comfortable and very much at home.

The terms “spacious” and “well-appointed” just begin to describe Odyssey’s extraordinary interior. With all of its theater-style seats in place, there is **room for seven** to ride in total comfort.

On the EX, you enjoy a **power driver’s seat** with 8-way adjustment and added lumbar support. Plus there are 11 – count them – beverage holders, as well as numerous storage compartments.

For optimum comfort, all three rows of seats have individual map lights and adjustable air-conditioning vents. And both audio systems, including the EX’s 6-speaker AM/FM stereo **CD player**, have larger rear speakers for excellent sound quality.

Power windows, mirrors and door locks are standard, as is cruise control. And on the EX, added luxuries like **automatic climate control** and a HomeLink® remote system make Odyssey a place you’ll look forward to spending lots of time in.





Need directions? You can easily find your destination with the **Honda Satellite-Linked Navigation System**. Available on Odyssey EX with Leather, it uses global positioning satellites (GPS) to pinpoint your location in most areas of the United States. The system can then provide you with clear, turn-by-turn directions, using visual and voice guidance.*



Image courtesy of Universal Studios

It's showtime. Your rear-seat passengers can enjoy their favorite movies and video games wherever you go with the integrated **Honda DVD Entertainment System with remote** (available on EX with Leather). This new, state-of-the-art system has a convenient ceiling-mounted, flip-down, seven-inch screen and can be operated using the front, rear or remote controls. Features include two sets of wireless headphones, as well as jacks for video games, camcorders and wired headphones. With the system's advanced design, front-seat occupants can enjoy the Odyssey's audio system, while those in the back can use headphones to listen to the DVD system.



Here's a warm welcome. Front-seat passengers will enjoy the comfort and luxury of new **heated front seats** (EX with Leather). They're operated via a button on each front door.

Get into it.



Take it easy. Getting in and out of the Odyssey EX is made easier and more convenient, thanks to its **dual power sliding doors**. And you can lock or unlock all the doors from as far as 50 feet away with the EX's **remote entry system**.



Your table is ready. Odyssey's versatile nature is expressed with its innovative **retractable center tray table**. Conveniently located between the front seats, it includes a sliding extension feature so passengers in the second row can use it, too.



Clean it up. For 2002, you can have your EX equipped with the luxury of **leather-trimmed upholstery**. It lets you take care of most spills quickly and easily with a clean, damp cloth.



Make a change. It's so easy and convenient to reconfigure Odyssey's versatile interior, with features like the **second-row sliding seats**. You can push them together, pull them apart, or simply remove them altogether to accommodate people, cargo or any combination of both.

Pack it all in. Odyssey's luxurious and versatile interior is just as adept at carrying cargo as it is at transporting passengers, thanks to features like its innovative third-row Magic Seat and a **low liftover height**. With just the front-row seats in place, Odyssey offers a generous **146 cu. ft. of cargo space** that's fully carpeted so you can carry even delicate items with greater ease and confidence. Other handy features include third-row seatback grocery hooks and numerous pockets and storage areas to secure small items. There are also convenient **second-row grab rails**, as well as **coat hooks** to help keep Odyssey's interior neat and tidy.



Watch it disappear. One of Odyssey's most versatile and innovative features is its third-row **folding Magic Seat**. When it's not needed for passengers, it folds and swings back into the deep cargo well, where it lies flush with the floor, creating a wide, easy-to-load cargo area.



Hang in there. With the Odyssey's third-row **grocery bag hooks**, your packages will remain securely in place, even when the vehicle is in motion.



Odyssey EX shown in Mesa Beige Metallic.



Odyssey EX interior shown in Ivory Leather.

At Honda, we believe racing not only makes for a better car – it also makes for a better car engineer. It's a belief that's been proven

over four decades of racing and winning on the world's most ferociously fast and

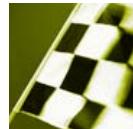
unforgiving racetracks. By learning to innovate under such intense pressure,

Honda engineers are better prepared to achieve greater advances in performance,

dependability and safety. And you'll be able

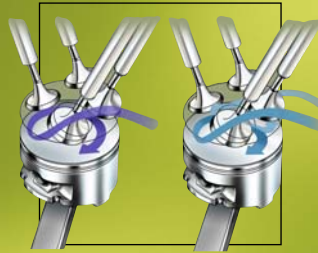
to fully appreciate these innovations every time

you slide behind the wheel of your Honda Civic.

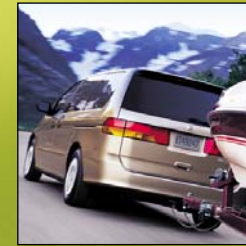


Odyssey EX shown in Redrock Pearl.

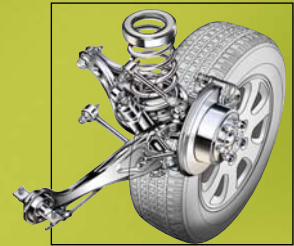
Ready. Set. Go.



Step on it. To extend its high-end power and low-end torque, Odyssey's 240-hp V-6 engine utilizes **variable valve timing and lift electronic control (VTEC)**.



Put it all behind you. Odyssey's maximum torque output of 242 lb.-ft. enables it to tow up to **3,500 lbs.*** when properly equipped.



Level the road. A rarity among minivans, Odyssey's **4-wheel independent suspension system** offers an exceptionally smooth ride.



Odyssey EX shown in Evergreen Pearl.

The largest engine manufacturer in the entire world, Honda has combined its vast resources with advanced racing technology to create a minivan that is nothing less than ingenious. This year, its enhanced 3.5-liter, 24-valve, VTEC V-6 engine boosts its output to **240 horsepower** while also meeting stringent Low-Emission Vehicle (LEV) standards and using regular unleaded fuel. And no major

tune-ups are required for the first 105,000 miles.* A highly sophisticated new **5-speed automatic** transmission puts that power to use. Its advanced Grade Logic Control avoids gear hunting on uphill, and on descents, it downshifts for added engine braking. New 4-wheel disc brakes provide stopping power, and an anti-lock braking system (ABS) helps you retain steering control, even under severe braking.

*Does not apply to fluid and filter changes. See owner's manual for details.

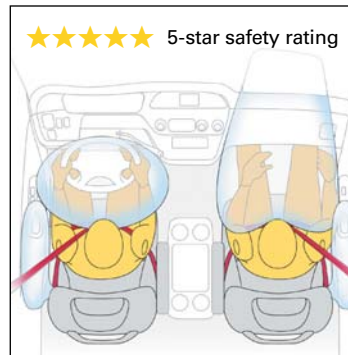
Odyssey is a superb example of Honda's legendary commitment to safety. Its technologically advanced safety features have earned it a quadruple **5-star rating** – the highest possible rating awarded for frontal- and side-impact protection by the National Highway Traffic Safety Administration.†

Features such as load-balancing Electronic Brake Distribution (EBD) and 4-wheel **anti-lock braking system** (ABS) help you retain steering control, even during hard stops.

And the EX's **security system** with panic button includes a remote entry system that operates the power door locks from up to 50 feet away.

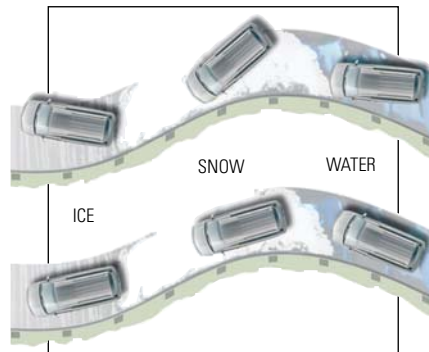


Odyssey also helps protect your littlest travelers with features like a second-row **LATCH** (Lower Anchors and Tethers for Children) system that helps ensure correct installation of compatible child seats.



Put safety at the very top. Odyssey helps protect its occupants with its **dual-stage front airbags (SRS)*** that deploy at one of two rates, based on impact severity and seat-belt use, plus standard **dual side airbags**. All seven seats come with **3-point seat belts** as well as individual head restraints. And a third-row **child-seat tether anchor** is also standard.

Be strong. The Odyssey's quadruple 5-star safety rating is the U.S. government's top ranking for frontal- and side-impact protection. Odyssey's **four-ring safety shell body** has been reinforced with **front and rear crush zones** and sturdy **steel side-impact door beams** to help minimize the risk of injury in a collision.



Maintain closer contact. To enhance traction and stability, Odyssey comes equipped with a **Traction Control System (TCS)**. It utilizes the anti-lock braking system's (ABS) sensors to detect and reduce wheel spin when you're traveling or starting off on uneven or slippery surfaces.

*Honda reminds you and your passengers to always buckle up.
†NHTSA frontal crash test: March 1999; side crash test: March 2000.

Go to the head of the class in safety.



Odyssey EX shown in Granite Green Metallic.

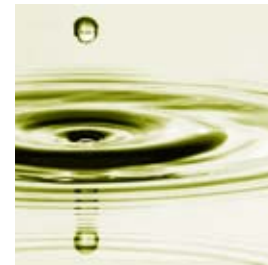
Life's a trip. Take full advantage of it.



Odyssey EX shown in Taffeta White.



Caring for the environment is a core Honda value. Since our 1975 Civic CVCC met clean-air standards without a catalytic converter, Honda has led the way in making eco-friendlier vehicles. Now, for 2002, every one of our new vehicles meets or surpasses all fifty states' LEV (Low-Emission Vehicle) standards. Even our exhilarating, high-performance 240-hp S2000 roadster. Which proves that, with Honda, driving a responsible car doesn't have to be boring.





Odyssey LX shown in Havasu Blue (available Spring 2002).



A Honda has always been the first to meet California's strict clean-air standards. Today, every Civic Coupe and Sedan is an Ultra-Low-Emission Vehicle (ULEV). Select Accord models are Super-Ultra-Low-Emission Vehicles (SULEV). Our natural-gas-fueled Civic GX features the world's

cleanest-burning internal-combustion engine. And Insight, a gasoline-electric hybrid, earned the Sierra Club's first Excellence in Environmental Engineering Award. You see, our commitment to putting the Earth first is steadfast. So you can be sure Honda will still be out front tomorrow.

Honda Odyssey 2002 Specifications and Features.

Engine	LX	EX	EX with Leather
Type: Aluminum-Alloy V-6	•	•	•
Displacement (liters)	3.5	3.5	3.5
Horsepower @ rpm (SAE net)	240 @ 5500	240 @ 5500	240 @ 5500
Torque (lb.-ft. @ rpm)	242 @ 4500	242 @ 4500	242 @ 4500
Compression Ratio	10.0:1	10.0:1	10.0:1
Valve Train: SOHC 24-Valve VTEC™	•	•	•
Fuel System: Multi-Point Fuel Injection	•	•	•
Direct Ignition System: Electronic w/Immobilizer	•	•	•
Drivetrain			
Type: Front-Wheel Drive	•	•	•
Automatic Transmission: 5-Speed	•	•	•
Final Drive Ratio	4.2:1	4.2:1	4.2:1
Body/Suspension/Chassis			
Body Type: Unit Body	•	•	•
Suspension: Front Strut/Rear Double Wishbone	•	•	•
Stabilizer Bar (mm, front)	22.0	22.0	22.0
Power Rack-and-Pinion Steering	•	•	•
Turning Diameter, Curb-to-Curb (ft.)	37.7	37.7	37.7
4-Wheel Disc Brakes with Anti-Lock Braking System (ABS)	•	•	•
Electronic Brake Distribution System (EBD)	•	•	•
Traction Control System (TCS)	•	•	•
Wheels	16" x 6.5 w/Full Covers	16" x 6.5 Alloy	16" x 6.5 Alloy
Tires: All-Season	225/60 R16 98T M+S	225/60 R16 98T M+S	225/60 R16 98T M+S
Exterior Dimensions			
Wheelbase (in.)	118.1	118.1	118.1
Length (in.)	201.2	201.2	201.2
Height (in.)	68.5	69.7	69.7
Width (in.)	75.6	75.6	75.6
Track (in., front/rear)	66.1/66.1	66.1/66.1	66.1/66.1
Curb Weight (lbs.)	4299	4354	4376
Towing Capacity (lbs.)	3500 ²	3500 ²	3500 ²
Interior Dimensions			
Headroom (in., front/middle/rear)	41.2/40.0/38.9	41.2/40.0/38.9	41.2/40.0/38.9
Legroom (in., front/middle/rear)	41.0/40.0/38.1	41.0/40.0/38.1	41.0/40.0/38.1
Shoulder Room (in., front/middle/rear)	62.6/64.5/61.7	62.6/64.5/61.7	62.6/64.5/61.7
Hiproom (in., front/middle/rear)	57.8/67.0/49.1	57.8/67.0/49.1	57.8/67.0/49.1
Cargo Volume (cu. ft., behind rear seat)	38.1	38.1	38.1
Cargo Volume (cu. ft., maximum)	146.1	146.1	146.1
Passenger Volume (cu. ft.)	170.7	170.7	170.7
EPA Mileage Estimates ⁴ /Fuel Capacity			
5-Speed Automatic (City/Highway)	18/25	18/25	18/25
Fuel (gal.)	20.0	20.0	20.0
Exterior Features			
Dual Sliding Doors	•	Power	Power
Intermittent Rear Window Wiper w/Washer	•	•	•
Security System	Accessory	•	•
Remote Entry System	Accessory	•	•
Dual Power Mirrors	•	Body-Colored	Body-Colored
Heat-Rejecting Glass	•	•	•
Alloy Wheels	Accessory	•	•
Rear Roofline Spoiler w/Integrated LED Brakelight	•	•	•
Body-Colored Body Side Molding	•	•	•
Multi-Reflector Halogen Headlights	•	w/Auto-Off	w/Auto-Off
5-mph Impact-Absorbing Body-Colored Bumpers	•	•	•

Exterior/Interior Colors	LX	EX	EX with Leather
Taffeta White/Fern	•	•	•
Havasu Blue Metallic ⁵ /Fern	•	•	•
Starlight Silver Metallic/Quartz	•	•	•
Redrock Pearl/Quartz	•	•	•
Granite Green Metallic/Fern	•	•	•
Evergreen Pearl/Ivory	•	•	•
Mesa Beige Metallic/Ivory	•	•	•
Interior Features			
Air Conditioning, Front and Rear	•	Automatic	Automatic
Power Windows w/Auto-Down Driver's Window	•	•	•
Power Door and Tailgate Locks	•	•	•
Power Rear Quarter-Windows	•	•	•
AM/FM Stereo Cassette	w/4 Speakers		
AM/FM Stereo CD Player		w/6 Speakers	w/6 Speakers
Cruise Control	•	•	•
Driver's and Front Passenger's Airbags (SRS)	•	•	•
Dual Side Airbags	•	•	•
3-Point Seat Belts at All Seating Positions	•	•	•
Lower Anchors and Tethers for Children (LATCH)	2nd-Row	2nd-Row	2nd-Row
3rd-Row Child-Seat Tether Anchor	•	•	•
Adjustable Front- and 2nd-Row Seat Belt Anchors	•	•	•
Child-Proof Rear Door Locks	•	•	•
HomeLink [®] Remote System ¹	•	•	•
Honda Satellite-Linked Navigation System™			Available*
Honda DVD Entertainment System			Available*
Driver's Seat Adjustment	Manual Height	8-Way Power	8-Way Power
Driver's Seat Manual Lumbar Support		•	•
Leather-Trimmed Seats and Door-Panel Inserts			•
Heated Front Seats		•	•
Front Bucket Seats w/Armrests	•	•	•
Convertible 2nd-Row Seats	•	•	•
Retractable 3rd-Row Magic Seat™	•	•	•
Rear-Seat Heater Ducts	•	•	•
Adjustable Steering Column	•	•	•
Steering Wheel-Mounted Audio Controls	•	•	•
Beverage Holders, Front, Middle and Rear (11 total)	•	•	•
Retractable Center Tray Table w/Sliding Extension	•	•	•
Front-Row Seatback Pockets	Passenger Side	•	•
2nd-Row Seatback Pockets		•	•
Sunglass Holder	•	•	•
2nd-Row Grab Rails with Coat Hooks	•	•	•
2-Speed/Variable Intermittent Windshield Wipers	•	•	•
Map Lights, Front, Middle and Rear	•	•	•
Rear Cargo Net	Accessory	•	•
Side Cargo Net	•	•	•
Remote Fuel Filler Door Release	•	•	•
Tailgate-Open Indicator Light	•	•	•
Low-Fuel and Low-Oil-Pressure Indicator Lights	•	•	•
Cargo Area Light	•	•	•
Floor Mats	•	•	•
Rear Window Defroster w/Timer	•	•	•
3rd-Row Seatback Grocery Bag Hooks	•	•	•
Driver's and Front Passenger's Illuminated Vanity Mirrors	•	•	•
Sliding Sun Visor Extensions	•	•	•

*The factory-installed Honda Satellite-Linked Navigation System and Honda DVD Entertainment System are not available together on the same Odyssey EX with Leather. See dealers for details.¹HomeLink[®] is a registered trademark of Prince Corporation, a wholly owned subsidiary of Johnson Controls.™²Requires surge-type or electric trailer brakes, load-distribution hitch and transmission oil cooler. **3-Year/36,000-Mile Limited Warranty:** Ordinary maintenance or adjustments, parts subject to normal wear and replacement, and certain items are excluded. See your Honda dealer for the terms and conditions of this limited warranty. ⁴Use for comparison purposes only. Actual mileage may vary. ⁵Available spring 2002. **Always use seat belts and appropriate child seats. Children are safest in the rear seat.** Teleshield images courtesy of Universal Studios. Some features mentioned herein are not available in all areas. See your Honda dealer for details. Some vehicles may be shown with optional equipment. Available = Optional. Specifications, features, illustrations and equipment shown in this brochure are based upon the latest available information at the time of printing. Although descriptions are believed correct, accuracy cannot be guaranteed. American Honda Motor Co., Inc., reserves the right to make changes at any time, without notice or obligation, in colors, specifications, accessories, materials and models. ©2001 American Honda Motor Co., Inc.



At Honda, superb assistance and **support** are standard equip-

ment. For example, do you want to personalize your new vehicle? Just ask your dealer to help you select quality items from our full line of genuine accessories. They're covered under our 3-year/36,000-mile limited **warranty**³ if they're installed when the car is purchased.

Of course, you can always rely on your dealer's team of Honda-trained technicians to help keep your new vehicle in tip-top condition. After all, no one knows your Honda vehicle better than they do. And, should you ever require additional information or assistance, just call us at

1-800-33-Honda.

HONDA

Financial Services

Whether you buy or lease a Honda, **Honda Financial Services** can assist you with the process. Ask your dealer which lease or purchase plan best suits your needs.



Listen to all your favorite music on our **in-dash CD changer**. This advanced system can accommodate up to six discs and has a variety of functions. And with its sophisticated design, you won't hear a single skip.

Other available accessories:

- Air Deflector
- Fog Lights
- Splash Guards
- Fenderwell Trim
- CD Player
- VHS Video System (i-VES)
- Interior Bike Attachment
- Cassette Player
- 16" Machine-Finished Alloy Wheels
- Wood-Grain Trim Kit
- Wood-Grain Steering Wheel
- Roof Rack (100-lb. maximum, LX)
- Trailer Hitch
- Cargo Cover
- Full Nose Mask
- Protection Package

Visit your Honda dealer or honda.com for a complete list of accessories.

HONDA Care

Honda Care is a comprehensive and affordable vehicle and travel protection plan that is fully backed by Honda reliability, service and parts. See your dealer for more information.



Enhance the versatility of your new Odyssey EX. Add **roof rack cross bars and attachments** for skis, a snowboard or a bike. You can carry up to 150 lbs. of extra stuff, up top and out of the way.



2001 model shown. 2002 model available 11/01.