

Audi

2017



Audi

# A3



# It's all in the family.

|               |                   |               |                      |
|---------------|-------------------|---------------|----------------------|
| <b>A3</b>     | <b>A3</b>         | <b>S3</b>     | <b>A3</b>            |
| 2.0T<br>Sedan | 2.0T<br>Cabriolet | 2.0T<br>Sedan | e-tron®<br>Sportback |

When it came to redesigning the Audi A3 family, we established a class of vehicles with bold, distinguishable personalities that share the same commitment to meticulous craftsmanship and engineering. The Sedan, Cabriolet, S3 Sedan and Sportback e-tron® models sport a more dynamic look while offering a suite of standard premium features and available advanced technologies like the Audi virtual cockpit, Audi connect® and driver assistance features. Three traditional powertrains—including a new 2.0-liter TFSI® engine for front-wheel drive models—help deliver a thrilling drive.<sup>1</sup> For those looking to drive the future, the plug-in hybrid electric A3 Sportback e-tron® offers efficiency and versatility without compromising on design.<sup>2,3</sup> You could say that the A3 family is proof that Audi is constantly writing new rules on progressive automotive design.



1 Always obey all speed and traffic laws. 2 Efficiency claim based on comparison of 2016 A3 Sportback e-tron® and 2016 Audi A3 1.8T gasoline model. EPA estimates for 2017 A3 Sportback e-tron® not available at time of publication. See [www.fueleconomy.gov](http://www.fueleconomy.gov) for updated information. Actual mileage will vary and depend on several factors including driving and charging habits, weather and temperature, battery age, and vehicle condition. Battery capacity decreases with time and use. See owner's manual for details. 3 The Audi A3 Sportback e-tron® is available only at participating Audi dealers.



2017 Audi S3 Sedan Prestige shown in Mythos Black metallic with available equipment (left).  
2017 Audi A3 Cabriolet 2.0T quattro® Prestige shown in Tango Red metallic with available equipment (right).



2017 Audi A3 Sportback e-tron® Prestige shown in Florett Silver metallic with available equipment.<sup>1</sup>



## An interpretation that matches its intent.

The artistic statement behind the redesigned exterior of the 2017 Audi A3 is clear from first glance. You get the same distinction you've come to expect from Audi with an array of sporty elements. The bold design is enhanced by striking features such as new available wheel designs, vibrant paint colors, and an S line® exterior appearance including aggressive front and rear bumpers and side sills. Illuminating the arresting look of the body is a new diamond-inspired Singleframe® grille, a dynamic undercut headlight design and redesigned LED light signatures. Strong design lines stretch across the length of the vehicle, both highlighting its stature and proving that this is the sporty vehicle for the next generation.



•  
•  
2017 Audi A3 Sedan 2.0T quattro® Premium Plus shown in Cosmos Blue metallic with available equipment.

# A front-row seat to luxury, even in the back seat.

With its wraparound dash, innovative three-dimensional inlays and horizontal design lines, the interior offers a sense of space that feels like a larger sedan. Audi hallmark craftsmanship and ingenuity are apparent from the minimalist look of the center console to the intuitive slim-line control buttons and aluminum accents that give the whole interior an elevated, uncluttered feel. With a surprising amount of leg room, supple leather seating surfaces and a standard panoramic sunroof for Sedan and e-tron® models, the interior of the Audi A3 showcases how we put you and your passengers at the center of our world.



2017 Audi A3 Sportback e-tron® Premium Plus shown with Black leather and available equipment.



2017 Audi A3 Sedan 2.0T quattro® Premium Plus shown with Black leather and available equipment.

# For those who require infinite headroom.

Indulge in open-air thrills felt with the top down in your Audi A3 Cabriolet. With the wind gliding past you, discover a thrilling connection to the world around you—while enjoying the finer things on the inside, like standard six-way partial power front seats with an available heated front seating feature. With its design, precision and details like an aluminum-optic windshield frame and an acoustic folding roof that can be deployed at speeds up to 31 mph, the A3 Cabriolet is bringing polished style to the road ahead.



# Give peace of mind a chance.

We understand that you can't control everything you experience on the road. That's why the Audi A3 airbag system was designed to work together with our safety belts and properly adjusted head restraints to provide a comprehensive safety measure. Electronic Stability Control (ESC) with a secondary collision brake assist feature works in sync with the Anti-lock Brake System (ABS) to help minimize loss of stability when the vehicle needs it.<sup>1</sup> The A3 also offers lightweight construction technology that provides strength, resilience and crumple zones that help mitigate potential injuries. Together, these advanced systems have helped award the 2017 Audi A3 Sedan with some more hardware we are proud of—an NHTSA 5-Star Overall Safety rating.<sup>2</sup>



2017 Audi A3 Sedan 2.0T quattro® Premium Plus shown in Cosmos Blue metallic with available equipment.

1. Airbags are supplemental restraints only and will not deploy in all crash circumstances. Always use safety belts and seat children only in the rear, using restraint systems appropriate for their size and age. 2. Government 5-Star Safety Ratings are part of the National Highway Traffic Safety Administration's (NHTSA's) New Car Assessment Program ([www.SaferCar.gov](http://www.SaferCar.gov)).

# Choose your power source.



## // Drivetrain

2.0-liter TFSI® four-cylinder engine with seven-speed S tronic® dual-clutch automatic transmission and front-wheel drive.

2.0-liter TFSI® four-cylinder engine with six-speed S tronic® dual-clutch automatic transmission and quattro® all-wheel drive.

## // Output

186 hp / 221 lb-ft.

220 hp / 258 lb-ft.

## // Performance

Top track speed of 130 mph.<sup>1</sup>

0–60 mph in 6.6 / 6.9 sec.  
(Sedan/Cabriolet with front-wheel drive).

0–60 mph in 5.8 / 5.9 sec.  
(Sedan/Cabriolet with quattro® all-wheel drive).

As we see it, the thrill of driving lies where power meets confidence. With available quattro® all-wheel drive in the Audi A3, you can experience the intensity of its precision handling. Its overall power speaks to confident design with two available 2.0-liter TFSI® direct injection engines and the quick shifts of the S tronic® dual-clutch automatic transmission. And with performance-enhancing options such as available Audi drive select, paddle shifters and sport suspension, you could say we've provided the tools to help you prepare for an exciting performance that moves you.<sup>2</sup>

2017 Audi A3 Sedan 2.0T quattro® Premium Plus shown in Cosmos Blue metallic with available equipment.

<sup>1</sup> Top track speed is electronically limited in the U.S. Always obey all speed and traffic laws. <sup>2</sup> Always obey all speed and traffic laws.





# Powerful performance drives us forward.

The bold look of the Audi S3 Sedan only hints at the powerful performance that's housed under the hood. With 292 hp, traction provided by quattro® all-wheel drive, Audi progressive steering and available Audi magnetic ride suspension, this is a precision sports car that can get performance potential out of the engine without breaking a sweat.<sup>1</sup> The S3 performance sedan expresses the kind of power that feels as good as the vehicle looks on the outside.

#### // Engine

2.0-liter TFSI® turbocharged four-cylinder engine.

292 hp / 280 lb-ft.

#### // Drivetrain

Six-speed S tronic® dual-clutch automatic transmission with quattro® all-wheel drive.

#### // Performance

Top track speed of 155 mph (130 mph when equipped with optional all-season tires)<sup>2</sup>

0-60 mph in 4.7 sec.

# S3



2017 Audi S3 Sedan Prestige shown in Mythos Black metallic with available equipment.

<sup>1</sup> Always obey all speed and traffic laws. <sup>2</sup> Top track speed is electronically limited in the U.S. Always obey all speed and traffic laws.

# To be refined you've got to go bold.

The dramatic sport interior of the S3 is unmistakably Audi, from the pronounced seat side bolsters of the available S sport seat, to the racing-inspired three-spoke flat-bottom multifunction sport steering wheel with shift paddles. Enjoy the sport-luxury feeling enhanced by available Fine Nappa leather with contrast diamond stitching. Nothing about the S3 Sedan is a soft gesture—rather, it's a bold statement on just how incredible Audi craftsmanship should be.

# S3





# A3 e-tron®



## Make an electrifying choice.

As we see it, just because you are looking for the efficiency and versatility of a hybrid vehicle doesn't mean you should sacrifice on premium features or performance. The plug-in hybrid electric Audi A3 Sportback e-tron® can offer the cleaner, more efficient operation of an electric vehicle coupled with the long-distance cruising range and convenience of a gasoline drivetrain.<sup>1</sup> Essentially, you can enjoy the best of both worlds in one beautifully designed vehicle.<sup>2</sup>



2017 Audi A3 Sportback e-tron® Prestige shown in Florett Silver metallic with available equipment.

<sup>1</sup> Efficiency claim based on comparison of 2016 A3 Sportback e-tron® and 2016 Audi A3 1.8T gasoline model. EPA estimates for 2017 A3 Sportback e-tron® not available at time of publication. See [www.fueleconomy.gov](http://www.fueleconomy.gov) for updated information. Actual mileage will vary and depend on several factors including driving and charging habits, weather and temperature, battery age, and vehicle condition. Battery capacity decreases with time and use. See owner's manual for details. <sup>2</sup> The Audi A3 Sportback e-tron® is available only at participating Audi dealers.

# A3 e-tron<sup>®</sup>



## A mode to fit your mood.

With a wealth of driving modes to select from, you can choose how you want to get to your destination. Engage EV mode and you can have the nearly instantaneous torque of the 75 kW (102 hp) electric motor at your disposal, allowing you to navigate the streets. Taking a road trip? Hybrid mode can be ideal for long-distance driving. It automatically chooses the most efficient power source based on speed, performance demand and other factors.<sup>1</sup> And when you want to feel this vehicle's full performance potential, dial in Sport mode. It can call up the available power from both the combustion engine and the electric motor to deliver all-out performance.<sup>2</sup>

## Leading the charge.

Audi engineering doesn't stop with the A3 Sportback e-tron<sup>®</sup>. It continues its innovative ways with the Audi e-tron charging system, which is included with the vehicle.<sup>3</sup> This charger can replenish your battery in as little as 2 hours and 15 minutes using a 240-volt source.<sup>4</sup> It can also be paired with an available wall-mounted cabinet for a truly elegant, home charging station. If you're planning on longer road travel, you can take your charger with you and use it where there's an available outlet. You can also take advantage of an available smartphone app that can check your vehicle's charge level and precondition the interior—turning on the climate control to heat or cool the cabin—for the ultimate in convenience.<sup>5,6</sup>



2017 Audi A3 Sportback e-tron<sup>®</sup> Prestige shown in Florett Silver metallic with available equipment.

1. Efficiency claim based on comparison of 2016 A3 Sportback e-tron<sup>®</sup> and 2016 Audi A3 1.8T gasoline model. EPA estimates for 2017 A3 Sportback e-tron<sup>®</sup> not available at time of publication. See [www.fueleconomy.gov](http://www.fueleconomy.gov) for updated information. Actual mileage will vary and depend on several factors including driving and charging habits, weather and temperature, battery age, and vehicle condition. Battery capacity decreases with time and use. See owner's manual for details. 2. Always obey all speed and traffic laws. 3. 120/240V charging hardware included with the vehicle. Optional cabinet, installation and wiring costs are extra and will vary. See your participating dealer for details. 4. Actual charge time will vary and depends on several factors including battery age and vehicle condition. Battery capacity decreases with time and use. See dealer or owner's literature for details. 5. Three years of complimentary Audi connect<sup>®</sup> e-tron<sup>®</sup> features available after activation of services. Audi connect<sup>®</sup> e-tron<sup>®</sup> services provided by Verizon Telematics, Inc. Services require vehicle cellular connectivity and availability of vehicle GPS signal; certain services may collect location information. See Terms of Service, Privacy Policy and other details at [www.etrn.audiusa.com](http://www.etrn.audiusa.com). Always pay careful attention to the road, and do not drive while distracted. 6. Compatible iPhone<sup>®</sup> and Android devices only. Standard data rates apply.

# On our radar, off your nerves.



- Cameras
- Radar sensors
- Ultrasonic sensors

Dramatization

The updated Audi A3 packs more available intelligent features than it ever has before.

Our comprehensive portfolio of available driver assistance technologies can help you to respond to unexpected situations on the road.<sup>1</sup> Standard Audi pre sense<sup>®</sup> front helps prepare for an imminent front-end collision with visual and acoustic warnings and, when needed, partial emergency braking. In the event that your vehicle begins to leave a lane without signaling, available Audi active lane assist can give you a steering-wheel vibration warning and gently corrects your steering, helping you avoid a potential incident.

## // Audi pre sense front

Standard on the 2017 Audi A3, Audi pre sense<sup>®</sup> front helps prepare for an imminent front-end collision with a stationary object or moving vehicle. While visual and audible warnings alert the driver, the hydraulic brake assist system helps prepare for an emergency stop. If no action is taken, partial emergency braking is initiated.

## Driver assistance aids

**Audi pre sense<sup>®</sup> basic<sup>1</sup>**

**Audi pre sense<sup>®</sup> front<sup>1</sup>**

**Rear view camera**

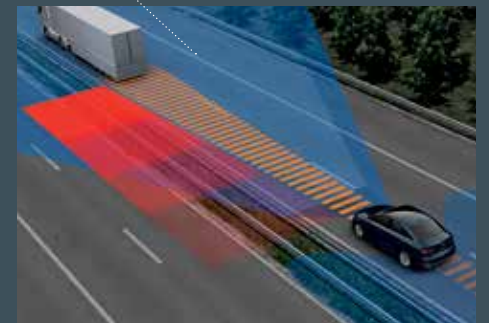
**Parking system plus with front and rear acoustic sensors<sup>1</sup>** (Premium Plus and Prestige models)

**Audi side assist with Rear cross traffic assist<sup>1</sup>** (Premium Plus with Technology package and Prestige models)

**High-beam assistant** (Prestige models)

**Audi active lane assist<sup>1</sup>** (Prestige models)

**Audi adaptive cruise control with stop & go** (Prestige models)



Dramatization

Download the Audi library app<sup>2</sup> on the App Store<sup>®</sup> or Google Play<sup>™</sup> store, or visit [Audiusa.com/brochures](http://Audiusa.com/brochures) to dive deeper into the redesigned Audi A3 as well as other models and Audi information.

<sup>1</sup> The features discussed are not substitutes for attentive driving. Please see your owner's manual for further details and important limitations.  
<sup>2</sup> Standard text and data usage rates apply.

# Our focus is your focus.

Smart, bold and beautiful. The available Audi virtual cockpit offers you a full picture of what you need to see, in your field of vision, with vibrant color on a 12.3-inch display. In the A3, the Audi virtual cockpit—a fully digital instrument cluster—offers two unique modes for viewing data: Classic and Infotainment. Classic mode offers the traditional look of a speedometer and tachometer, whereas Infotainment mode minimizes these gauges while providing space for a larger panoramic navigation or infotainment visual. And on S3 models, an additional Sport mode displays a large central tachometer along with performance stats. For a more hands-on approach, consider our available MMI® touch rotary controller with integrated touchpad and intuitive two-button function keys.



Take comfort in the familiarity of your compatible mobile device when you connect it via available Audi smartphone interface. When linked with your iPhone®, Apple CarPlay™ allows you to control your iPhone® through Siri® and the car's controls to access your favorite apps such as Apple Music®, Maps, Messages and more. If you have a compatible Android device, Google™ Android Auto will connect you with Google Play™ Music, Google Maps™, Google Search and more.<sup>1</sup>

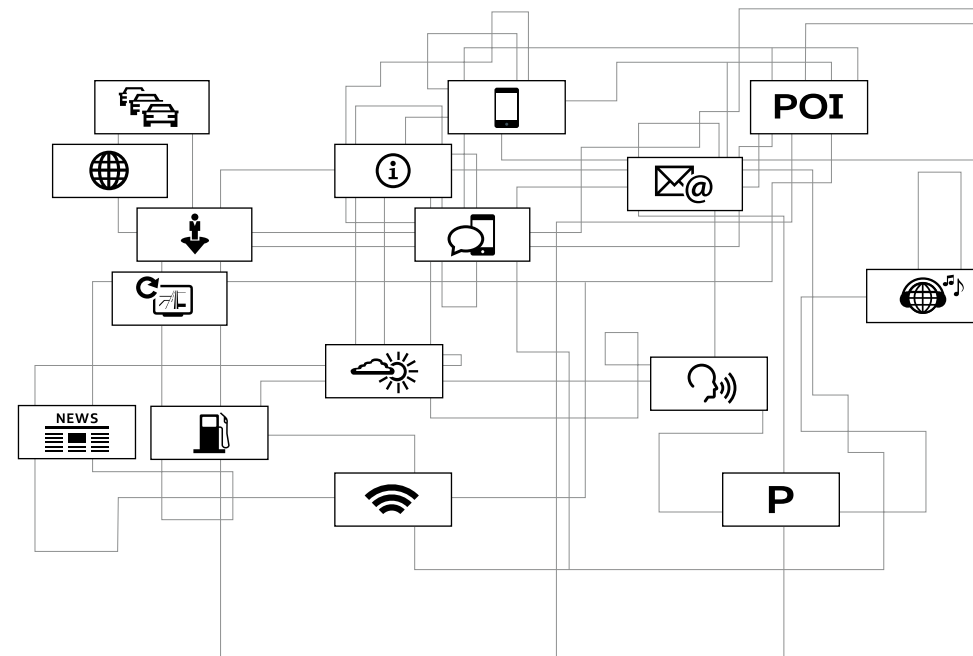


Audi smartphone interface supported by Apple CarPlay™ shown.

<sup>1</sup> Always pay careful attention to the road, and do not drive while distracted. Not all features available on all operating systems. Standard text and data usage rates apply. These features require compatible device, operating system, and mobile apps. See mobile device and app providers for terms and privacy. "Android Auto" is a trademark of Google Inc. "Apple CarPlay" is a trademark of Apple Inc. <sup>2</sup> Always pay careful attention to the road, and do not drive while distracted. Audi connect should only be used when it is safe and appropriate. Audi connect services and features are optional, provided with the support of authorized affiliated and third party service providers, and may require additional subscriptions with separate terms and conditions. Available on select models. Certain services collect location information, see Terms of Service for information about how to disable and for other details. <sup>3</sup> Always pay careful attention to the road, and do not drive while distracted. The Wi-Fi hotspot feature is intended for passenger use only. Connect PLUS features and technologies are optional, may require an additional subscription with separate terms and conditions, and should be used only when it is safe and appropriate. See materials provided by wireless carrier for terms, privacy, data security details. Returning devices connect automatically and use plan data unless hotspot is removed from device settings. <sup>4</sup> Always pay careful attention to the road, and do not drive while distracted. Connect PRIME services are optional, may require an additional subscription with separate terms and conditions, and should be used only when it is safe and appropriate. Trial or paid subscription required. Connect PRIME services require vehicle cellular connectivity and availability of vehicle GPS signal; certain services collect location information, see Terms of Service for information about how to disable. See Terms of Service, Privacy Policy, and other details at [www.audiusa.com/audiconnect-privacy](http://www.audiusa.com/audiconnect-privacy) and [www.audiusa.com/audiconnect-terms](http://www.audiusa.com/audiconnect-terms). Connect PRIME services should only be used when it is safe and appropriate. <sup>5</sup> Pre-paid session-based plans, available for domestic use only. Plans expire when full data allotment is used or time period ends, whichever comes first. Monthly plans auto-renew every 30 days and charges are billed to the credit card on file on the last day of the 30-day term, for the next 30-day time period, unless canceled. To cancel monthly plans at any time, visit [myaudiconnect.com](http://myaudiconnect.com) or call 1-877-505-2834. Other plans do not auto-renew. Wi-Fi: Connectivity for up to 8 Wi-Fi capable devices. General Wireless Service Terms: Subject to the Session Based Wireless Data Services Agreement. Other restrictions and terms apply and may result in service termination and/or limitations. Coverage and service not available everywhere.

# Connecting invisible threads.

Stay connected even when you're on the go with the power of available next-generation Audi connect®.<sup>2</sup> Want to avoid heavy traffic? Want to keep your passengers entertained with an in-vehicle Wi-Fi® hotspot?<sup>3</sup> Audi connect PRIME and PLUS plans offer a robust portfolio of services with the means to inform, entertain and can help you get to where you want to go.<sup>4,5</sup>



## Our vision of live sound.



From perfectly sculpted high notes to a crystal-clear mid-range to deep-diving lows, the standard Audi sound system is a veritable orchestra of engineering that is perfectly integrated within your A3. Through an available 705-watt, 14-speaker system in your Audi A3 Sedan or e-tron®—or an available 625-watt, 13-speaker system in your A3 Cabriolet—the sound system fills the cabin with faithfully rendered, thrilling sound. This shouldn't be surprising, considering that Bang & Olufsen® and Audi sound engineers worked tirelessly to craft a perfect acoustic environment and the ideal delivery system for it, even adjusting volume and timbre to balance changing ambient noise levels. Whether you're the type who wants to be soothed by sound or inspired by it, we promise that if you take a moment to listen, what you'll hear is the embodiment of how good life can sound in your Audi.



A



B



D



C



E

- A. Available S line® front bumper with an integrated front chin spoiler and black honeycomb inserts.
- B. Available front Sport seats | A sportier look is met with the convenience of twelve-way seat power.
- C. Available S line® door sills | S badging elevates the entryway to your A3 Sedan and Cabriolet.
- D. Available LED interior accents including light guides within the Bang & Olufsen® front door speakers
- E. Available S line® rear bumper with gray diffuser structure and black honeycomb insert
- F. Exterior LED lighting technology | Available full LED headlights and standard LED taillights with available dynamic turn signals form a distinctive look and provide long-lasting illumination.
- G. Available Audi advanced key | Start, stop and unlock your vehicle at the push of a button.<sup>1</sup>



F



G

<sup>1</sup> See Owner's Manual for further details and important warnings about the keyless ignition feature. Do not leave vehicle unattended with the engine running, particularly in enclosed spaces.



You're a try-anything-once, never-sit-still, give-it-your-all kind of person. Life doesn't just string you along; you live to take life further. Audi Genuine Accessories can help you do just that. For personalizing, help in protecting and showing your Audi pride, our accessories were made for your lifestyle.

# Now for the finishing touches.



## A. Fork-mount bike rack<sup>1</sup>

Pursuing your favorite pastime just got easier. Made of anodized aluminum, this bike rack features a quick-clamping device that can be secured with the included lock. Shown with the wheel holder attachment, sold separately.



B

## B. Compact cargo carrier<sup>1</sup>

Extra gear won't take up valuable cargo space with our aerodynamic carrier that offers a generous 10.5-cu-ft capacity. Size: 76" long, 26" wide, 15" high.



C

## C. All-weather floor mats

The all-weather floor mats feature a deep-ribbed, channeled design that helps protect your vehicle's floor and carpeting from the elements. Black mats are available in sets of two for front and rear. Front mats feature the A3 logo.



## D. All-weather cargo mat

Designed to fit for your Audi A3, the raised outside edge of the cargo mat helps contain spills and protect the cargo-area carpeting from stains. The textured material helps control load shifting.

<sup>1</sup> All roof-rack system attachments require the base carrier bars. All attachments sold separately. Recreational equipment, sporting equipment and luggage not included.

## Audi Genuine Accessories

### Audi Genuine Sport and Design Accessories

For a bolder appearance or a finishing touch, we have a solution that helps make every mile more enjoyable—and more yours.

- ▶ Stylish wheel designs
- ▶ Rear spoilers
- ▶ License plate frames

### Audi TravelSpace Transport Accessories

When on the go, help make sure your gear fits with a variety of intelligent and innovative solutions.

- ▶ Bike and ski racks
- ▶ Rooftop cargo carriers
- ▶ In-vehicle cargo bags

### Audi Guard Comfort and Protection Accessories

Help protect what you love. Use Audi Guard Comfort and Protection Accessories to help keep your Audi looking like new—inside and out.

- ▶ Floor mats
- ▶ First aid kit
- ▶ Cargo mats

### Audi Guard Car Care Products

Your Audi A3 deserves the best—a car care line designed specifically for Audi.

- ▶ Leather care
- ▶ Detailing tools
- ▶ Winter protection

#### A. A3 winter wheel and tire package

Adding style and performance, this winter wheel and tire package features Audi Original winter tires specifically engineered to help improve traction and handling in a variety of winter weather conditions.<sup>1</sup> See your authorized Audi dealer for details.



#### B. 18" 5-arm Velum wheels

High-grade aluminum alloy wheels add a bold design accent to the A3 styling. Matte black with a machine-finished face.



#### C. Carbon Fiber rear lip spoiler

A stylish, custom addition, this spoiler is made of genuine Carbon Fiber for a stand-out contrast.



#### D. Carbon Fiber mirror caps

Built from the same materials as the famed Audi Le Mans prototype race cars, these dramatic mirror caps display Carbon Fiber technology in all its glory, and add a classy touch to your A3.



#### E. First aid kit

In the event of an emergency, you may want these essentials close at hand. Includes an emergency blanket, burn/wound dressings and much more.



## Audi collection



Audi Sheffield bottle by Contigo® shown above.

#### F. Men's chronograph watch

Top-quality workmanship combines with precise Swiss movement. This elegant watch features a black leather band, stainless steel case, black dial and the Audi rings logo.



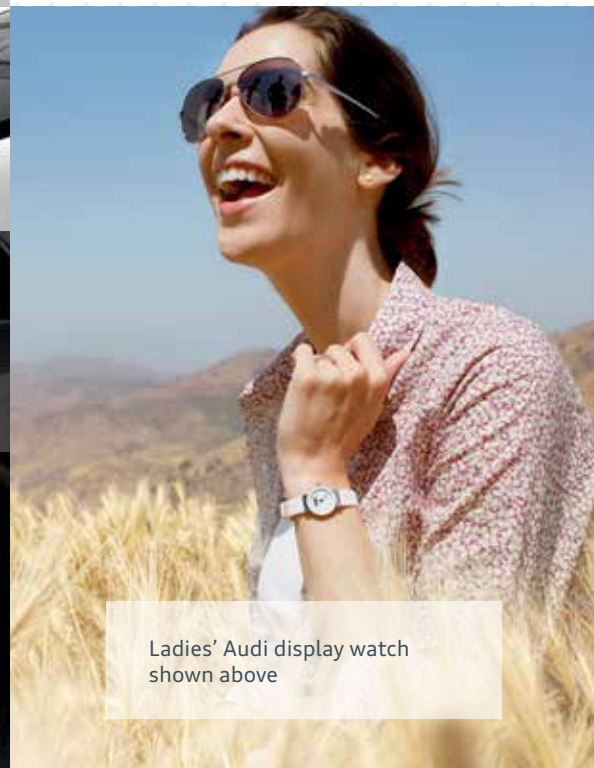
#### G. Men's Ingolstadt jacket

This three-layer performance soft-shell jacket, with a bonded fleece lining and an interior membrane, features custom map artwork in front and the Audi rings logo on the sleeve.



#### H. Ladies' half-zip mock neck by Spyder®

Moisture-wicking, quick-drying, slim-fit material provides plenty of comfort. Features the Spyder® and Audi Sport® logos and is available in black, red, gray or white.



Ladies' Audi display watch shown above

Visit [parts.audiusa.com](https://parts.audiusa.com) for more.

1. When driving during cold, snowy, or icy weather conditions, ensure that your vehicle is equipped with appropriate all-season or winter weather tires. Even with appropriate tires, you must always drive in a manner appropriate for the weather, visibility and road conditions. Tires are supplied and warranted by their manufacturer.

Visit [audicollectionusa.com](https://audicollectionusa.com) for more.

# Objects are closer than they appear.

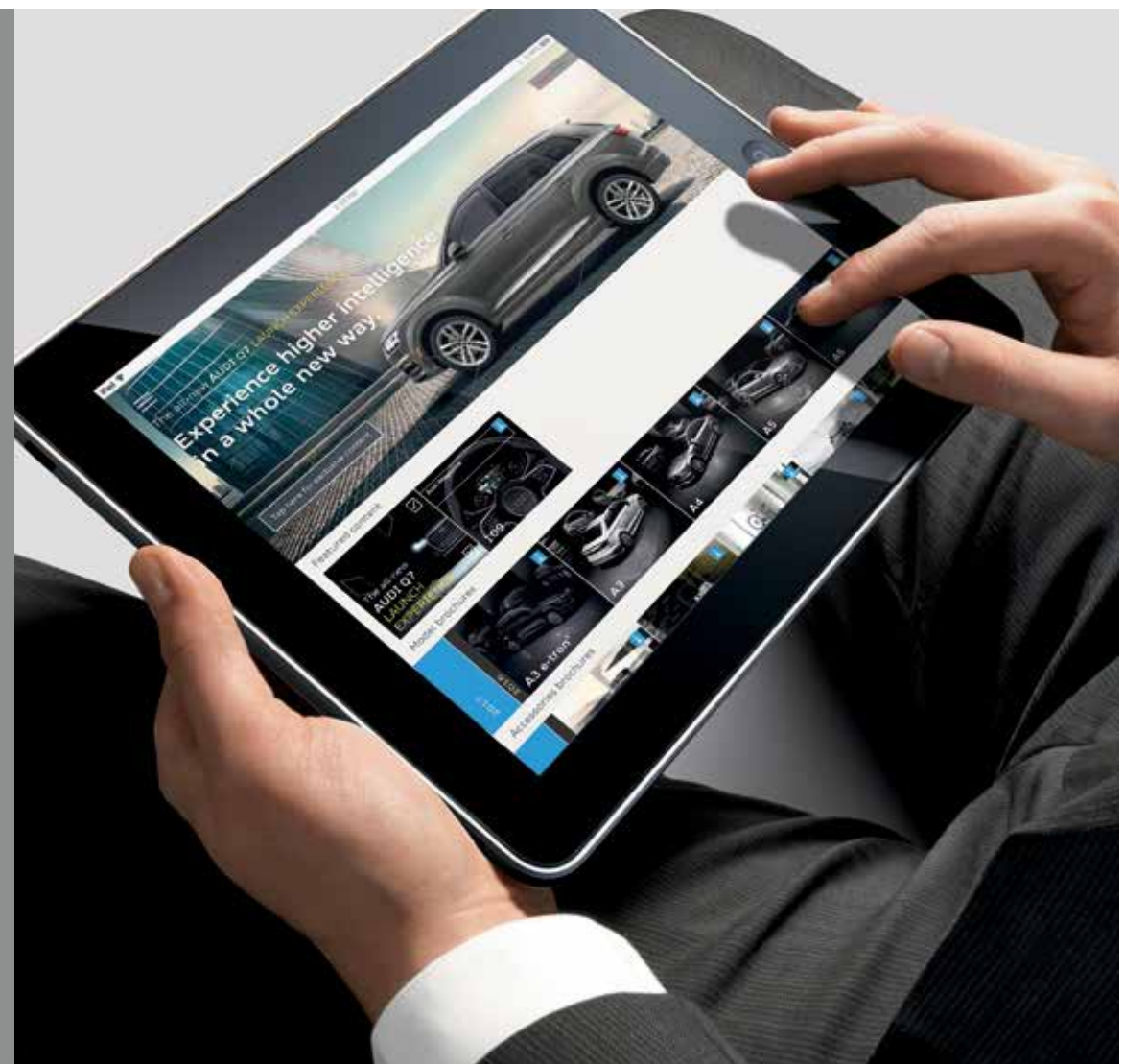
With the 2017 Audi A3 or S3, a luxurious experience and heightened performance are definitely within reach. Our A3 family of vehicles touts an impressive amount of standard and available technology, potent 2.0-liter TFSI® engines, and the engineering and craftsmanship that is worthy of its four rings.



2017 Audi A3 Sedan 2.0T front-wheel drive Premium shown in Monsoon Gray metallic (left).  
2017 Audi S3 Sedan Premium Plus shown in Vegas Yellow (right).

## Experience more in Audi library.

Dive deeper into the technical specifications, trim levels and technologies of the new Audi A3, S3 and Sportback e-tron® through the Audi library app or web viewer.<sup>1</sup> Download the Audi library app on the App Store® or Google Play™ store, or visit [Audiusa.com/brochures](http://Audiusa.com/brochures) to explore a repository containing Audi informational materials—including a comprehensive look at the 2017 Audi A3 family.



<sup>1</sup> Standard text and data usage rates apply.

# A3

## Premium Sedan/Cabriolet



2017 Audi A3 Sedan 2.0T quattro® Premium shown in Nano Gray metallic (left).  
2017 Audi A3 Cabriolet 2.0T quattro® Premium shown in Glacier White metallic (right).

### A3 Premium Featured highlights

#### Infotainment/Technology

- > Driver information system
- > Audi concert radio with ten speakers and single CD player with MP3 playback capability (nine speakers on Cabriolet)
- > HD Radio™ Technology
- > SiriusXM® Satellite Radio with 90-day trial subscription<sup>1</sup>
- > SD card slot with 32GB operating capacity
- > 3.5 mm aux-in with USB port for charging
- > BLUETOOTH® streaming audio for compatible devices
- > BLUETOOTH® wireless technology preparation for compatible mobile phones
- > Anti-theft alarm system

#### Driver Assistance/Innovation

- > Cruise control with coast, resume and accelerate features
- > Audi pre sense® basic<sup>2</sup>
- > Audi pre sense® front<sup>2</sup>
- > Rear view camera
- > Rain/light sensor for automatic windshield wipers and headlights

#### Exterior

- > 17" 5-arm-design wheels with 225/45 all-season tires<sup>3</sup>
- > Singleframe® grille
- > Xenon plus headlights with LED daytime running lights
- > LED taillights with rear fog lights
- > Power-adjustable heated exterior side mirrors

- > Driver's side dual exhaust outlets (front-wheel drive models)
- > Dual exhaust outlets (quattro® models)

#### Interior/Seating

- > Dual-zone automatic climate control
- > Micrometallic Silver inlays
- > Aluminum door sill inlays
- > Aluminum interior package (climate control vent and door handle surrounds, plus mirror and window control trims)
- > Three-spoke multifunction steering wheel
- > Tilt and telescopic manually adjustable steering column
- > Panoramic sunroof (Sedan)
- > Acoustic folding roof—folds at speeds up to 31 mph (Cabriolet)
- > Black cloth headliner
- > Leather seating surfaces
- > Twelve-way power driver's seat, including four-way power lumbar adjustment (Sedan)
- > Ten-way power front seats, including four-way power lumbar adjustment (Cabriolet)
- > Split folding rear seat back

#### Safety

- > Driver and front passenger advanced airbags, knee airbags, front thorax side airbags and Sideguard® head curtain airbags (Sedan)<sup>4</sup>
- > Driver and front passenger advanced airbags, knee airbags and front head/thorax side airbags (Cabriolet)<sup>4</sup>
- > Front passenger occupant detection for airbags<sup>4</sup>
- > Active rollover protection system (Cabriolet)

- > Safety belt reminder for driver and front passenger
- > Lower Anchors and Tethers for Children (LATCH) in rear seats (lower anchors only on Cabriolet)
- > Power central locking system with safety unlock feature if airbags deploy
- > Electronic Stability Control (ESC) with secondary collision brake assist and traction control (ASR)
- > Anti-lock Brake System (ABS) with Electronic Brake-pressure Distribution (EBD) and brake assist
- > Tire-pressure monitoring system
- > Electromechanical parking brake

### A3 Premium Stand-alone options

- > 17" 10-spoke-turbine design wheels with 225/45 all-season tires<sup>3</sup>
- > 18" 5-double-spoke design wheels, contrasting gray/polished finish with 225/40 all-season tires<sup>3</sup>
- > Rear-passenger thorax side airbags (Sedan)<sup>4</sup>
- > Heated front seats
- > Sport suspension

### A3 Premium Available packages

#### Convenience package

- > Audi advanced key—keyless start, stop and entry<sup>5</sup>
- > Audi smartphone interface including Apple CarPlay™ and Google™ Android Auto<sup>6</sup>
- > Audi music interface with two USB ports for data and charging

#### Sport package

- > Three-spoke multifunction flat-bottom sport steering wheel with shift paddles
- > Front sport seats with extendable thigh support
- > Audi drive select

<sup>1</sup> SiriusXM® Satellite Radio and SiriusXM® Traffic subscriptions are sold separately or as a package after trial period and are continuous until you call SiriusXM® to cancel. See Customer Agreement for complete terms and more information at [www.siriusxm.com](http://www.siriusxm.com). SiriusXM® Traffic service available in select markets. SiriusXM® U.S. Satellite Service available only to those in the 48 contiguous U.S.A., D.C. and Puerto Rico (with coverage limitations). <sup>2</sup> The features discussed are not substitutes for attentive driving. See Owner's Manual for further details, and important limitations. <sup>3</sup> These tires may ride less comfortably, make more noise, and wear more quickly than other choices. To avoid tire, rim, or vehicle damage, it is important that inflation pressure is regularly checked and maintained at optimum levels. Tires are supplied and warranted by their manufacturer. <sup>4</sup> Airbags are supplemental restraints only and will not deploy under all crash circumstances. Always use safety belts and seat children only in the rear, using restraint systems appropriate for their size and age. <sup>5</sup> See Owner's Manual for further details and important warnings about the keyless ignition feature. Do not leave vehicle unattended with the engine running, particularly in enclosed spaces. <sup>6</sup> Always pay careful attention to the road, and do not drive while distracted. Not all features available on all operating systems. Standard text and data usage rates apply. These features require compatible device, operating system, and mobile apps. See mobile device and app providers for terms and privacy.

# A3

## Premium Plus and Prestige Sedan/Cabriolet



2017 Audi A3 Sedan 2.0T quattro® Premium Plus shown in Cosmos Blue metallic (left).  
2017 Audi A3 Cabriolet 2.0T quattro® Prestige shown in Tango Red metallic (right).

### A3 Premium Plus Featured highlights



In addition to or replaces  
highlighted features  
of A3 Premium

#### Infotainment/Technology

- > Audi smartphone interface including Apple CarPlay™ and Google™ Android Auto<sup>1</sup>
- > Audi music interface with two USB ports for data and charging

#### Driver Assistance/Innovation

- > Audi advanced key—keyless start, stop and entry<sup>2</sup>
- > Parking system plus (front and rear acoustic sensors)

#### Exterior

- > 18" 5-double-spoke design wheels, contrasting gray/polished finish with 225/40 all-season tires<sup>3</sup>
- > S line® exterior appearance
- > S line® fender badges
- > Aluminum trim around exterior side windows (Sedan)

#### Interior/Seating

- > Auto-dimming interior rear view mirror with digital compass
- > Aluminum Mistral inlays
- > Aluminum door sill inlays with S badging
- > Twelve-way power front seats, including four-way power lumbar adjustment (Sedan)
- > Heated front seats

### A3 Prestige Featured highlights



In addition to or replaces  
highlighted features  
of A3 Premium Plus

#### Infotainment/Technology

- > Technology package
- > Bang & Olufsen® Sound System with 14 speakers and 705 watts (13 speakers and 625 watts on Cabriolet)

#### Driver Assistance/Innovation

- > Audi active lane assist<sup>4</sup>
- > Audi adaptive cruise control with stop & go
- > High-beam assistant

#### Exterior

- > LED lighting package
- > Power-adjustable, power-folding, heated exterior side mirrors with driver's side auto-dimming

#### Interior/Seating

- > Interior Storage package
- > Ambient LED interior lighting

### A3 Premium Plus/Prestige Stand-alone options

- > 18" Audi Sport® 10-V-spoke design wheels with 225/40 all-season tires (Premium Plus)<sup>3</sup>
- > 19" 5-arm-wing design wheels, polished/anthracite finish with 235/35 summer performance tires<sup>5</sup>
- > Rear-passenger thorax side airbags (Sedan)<sup>6</sup>
- > Bang & Olufsen® Sound System (Premium Plus)
- > Sport suspension

### A3 Premium Plus/Prestige Available packages

#### Technology package (Premium Plus)

- > Audi virtual cockpit
- > MMI® navigation plus with voice control system (voice control not available on Cabriolet)<sup>7</sup>
- > MMI® touch with handwriting-recognition technology
- > Six-month trial subscription to Audi connect® PRIME and connect® PLUS online services<sup>8,9</sup>
- > Audi side assist with Rear cross traffic assist<sup>4</sup>

#### LED lighting package (Premium Plus)

- > Full LED headlights
- > LED taillights with dynamic turn signals

#### Sport package

- > Three-spoke multifunction flat-bottom sport steering wheel with shift paddles
- > Front sport seats with extendable thigh support
- > Audi drive select

1. Always pay careful attention to the road, and do not drive while distracted. Not all features available on all operating systems. Standard text and data usage rates apply. These features require compatible device, operating system, and mobile apps. See mobile device and app providers for terms and privacy. 2. See Owner's Manual for further details and important warnings about the keyless ignition feature. Do not leave vehicle unattended with the engine running, particularly in enclosed spaces. 3. These tires may ride less comfortably, make more noise, and wear more quickly than other choices. To avoid tire, rim, or vehicle damage, it is important that inflation pressure is regularly checked and maintained at optimum levels. Tires are supplied and warranted by their manufacturer. 4. The features discussed are not substitutes for attentive driving. See Owner's Manual for further details, and important limitations. 5. These tires may ride less comfortably, make more noise, and wear more quickly than other choices. To avoid tire, rim, or vehicle damage, it is important that inflation pressure is regularly checked and maintained at optimum levels. High-performance tires are designed for optimum performance and handling in warm climates and are not suitable for cold, snowy, or icy weather conditions. When driving during cold, snowy, or icy weather conditions, ensure that your vehicle is equipped with appropriate all-season or winter weather tires. Tires are supplied and warranted by their manufacturer. 6. Airbags are supplemental restraints only and will not deploy under all crash circumstances. Always use safety belts and seat children only in the rear, using restraint systems appropriate for their size and age. 7. Audi Navigation plus depends on signals from the worldwide Global Positioning Satellite network. The vehicle's electrical system, and existing wireless and satellite technologies, must be available and operating properly for the system to function. The system is designed to provide you with suggested routes in locating addresses, destination and other points of interest. Changes in street names, construction zones, traffic flow, points of interest and other road system changes are beyond the control of Audi of America, Inc. Complete detailed mapping of lanes, roads, streets, toll roads, highways, etc., is not possible, therefore you may encounter discrepancies between the mapping and your actual location. Please rely on your individual judgment in determining whether or not to follow a suggested Audi navigation plus route. Periodically the mapping is updated and a new DVD will be required in order to maintain the latest navigation information available to us. These will be available for purchase from time to time at additional cost. Consult your dealer or call 1-800-FOR-AUDI for details. 8. Always pay careful attention to the road, and do not drive while distracted. Connect PRIME services are optional, may require an additional subscription with separate terms and conditions, and should be used only when it is safe and appropriate. Trial or paid subscription required. Connect PRIME services require vehicle cellular connectivity and availability of vehicle GPS signal; certain services collect location information, see Terms of Service for information about how to disable. See Terms of Service, Privacy Policy, and other details at [www.audiusa.com/audiconnect-privacy](http://www.audiusa.com/audiconnect-privacy) and [www.audiusa.com/audiconnect-terms](http://www.audiusa.com/audiconnect-terms). Connect PRIME services should only be used when it is safe and appropriate. 9. Pre-paid session-based plans, available for domestic use only. Plans expire when full data allotment is used or time period ends, whichever comes first. Monthly plans auto-renew every 30 days and charges are billed to the credit card on file on the last day of the 30-day term, for the next 30-day time period, unless canceled. To cancel monthly plans at any time, visit [myaudiconnect.com](http://myaudiconnect.com) or call 1-877-505-2834. Other plans do not auto-renew. Wi-Fi: Connectivity for up to 8 Wi-Fi capable devices. General Wireless Service Terms: Subject to the Session Based Wireless Data Services Agreement. Other restrictions and terms apply and may result in service termination and/or limitations. Coverage and service not available everywhere.

# A3 Sportback e-tron<sup>®</sup>

Premium, Premium Plus and Prestige



2017 Audi A3 Sportback e-tron<sup>®</sup> Premium Plus shown in Monsoon Gray metallic (left).  
2017 Audi A3 Sportback e-tron<sup>®</sup> Prestige shown in Florett Silver metallic (right).

## A3 Sportback e-tron<sup>®</sup> Premium Featured highlights

**+**  
In addition to or replaces highlighted features of A3 Sedan Premium

### Engineering/Performance

- > 1.4-liter TFSI<sup>®</sup> engine
- > 102-hp liquid-cooled three-phase hybrid AC electric motor/generator
- > 204 hp/258 lb-ft of torque (combined output)
- > 8.8-kWh lithium-ion hybrid battery module

### Infotainment/Technology

- > Color driver information system
- > Audi music interface with two USB ports for data and charging

### Driver Assistance/Innovation

- > Audi advanced key—keyless start, stop and entry<sup>1</sup>
- > Audi drive select

### Exterior

- > 17" 15-spoke-turbine design wheels with 225/45 all-season tires<sup>2</sup>
- > e-tron<sup>®</sup> specific front/rear fasciae
- > e-tron<sup>®</sup> specific light signature
- > e-tron<sup>®</sup> fender badges

### Interior/Seating

- > Ambient LED interior lighting

- > Twelve-way power front seats, including four-way power lumbar adjustment

### Safety

- > Driver and front passenger advanced airbags, knee airbags, front and rear thorax side airbags and Sideguard<sup>®</sup> head curtain airbags<sup>3</sup>

## A3 Sportback e-tron<sup>®</sup> Premium Plus Featured highlights

**+**  
In addition to or replaces highlighted features of A3 Sportback e-tron<sup>®</sup> Premium

### Driver Assistance/Innovation

- > Parking system plus (front and rear acoustic sensors)

### Exterior

- > Full LED headlights
- > LED taillights with dynamic turn signals

### Interior/Seating

- > Auto-dimming interior rear view mirror with digital compass
- > 3D Optic inlays
- > Heated front seats

## A3 Sportback e-tron<sup>®</sup> Prestige Featured highlights

**+**  
In addition to or replaces highlighted features of A3 Sportback e-tron<sup>®</sup> Premium Plus

### Infotainment/Technology

- > Technology package
- > Bang & Olufsen<sup>®</sup> Sound System with 14 speakers and 705 watts

### Driver Assistance/Innovation

- > Audi active lane assist<sup>4</sup>
- > Audi adaptive cruise control with stop & go<sup>4</sup>
- > High-beam assistant

### Exterior

- > Power-adjustable, power-folding, heated exterior side mirrors with driver's side auto-dimming

### Interior/Seating

- > Interior Storage package

## A3 Sportback e-tron<sup>®</sup> Premium, Premium Plus and Prestige Stand-alone options

- > Bang & Olufsen<sup>®</sup> Sound System (Premium Plus)
- > Heated front seats (Premium)
- > Aluminum roof rails

## A3 Sportback e-tron<sup>®</sup> Premium, Premium Plus and Prestige Available packages

### Technology package (Premium Plus)

- > Audi virtual cockpit
- > Audi smartphone interface including Apple CarPlay<sup>™</sup> and Google<sup>™</sup> Android Auto
- > MMI<sup>®</sup> navigation plus with voice control system<sup>5</sup>
- > MMI<sup>®</sup> touch with handwriting-recognition technology
- > Six-month trial subscription to Audi connect<sup>®</sup> PRIME and connect<sup>®</sup> PLUS online services<sup>6,7</sup>
- > Audi side assist with Rear cross traffic assist<sup>4</sup>

### Sport package

- > 18" 15-spoke-turbine design wheels with 225/40 all-season tires<sup>2</sup>
- > Three-spoke multifunction flat-bottom sport steering wheel with shift paddles
- > Front sport seats with extendable thigh support
- > S line<sup>®</sup> roof spoiler

1 See Owner's Manual for further details and important warnings about the keyless ignition feature. Do not leave vehicle unattended with the engine running, particularly in enclosed spaces. 2 These tires may ride less comfortably, make more noise, and wear more quickly than other choices. To avoid tire, rim, or vehicle damage, it is important that inflation pressure is regularly checked and maintained at optimum levels. Tires are supplied and warranted by their manufacturer. 3 Airbags are supplemental restraints only and will not deploy under all crash circumstances. Always use safety belts and seat children only in the rear, using restraint systems appropriate for their size and age. 4 The features discussed are not substitutes for attentive driving. See Owner's Manual for further details, and important limitations. 5 Audi Navigation plus depends on signals from the worldwide Global Positioning Satellite network. The vehicle's electrical system, and existing wireless and satellite technologies, must be available and operating properly for the system to function. The system is designed to provide you with suggested routes in locating addresses, destination and other points of interest. Changes in street names, construction zones, traffic flow, points of interest and other road system changes are beyond the control of Audi of America, Inc. Complete detailed mapping of lanes, roads, streets, toll roads, highways, etc., is not possible, therefore you may encounter discrepancies between the mapping and your actual location. Please rely on your individual judgment in determining whether or not to follow a suggested Audi navigation plus route. Periodically the mapping is updated and a new DVD will be required in order to maintain the latest navigation information available to us. These will be available for purchase from time to time at additional cost. Consult your dealer or call 1-800-FOR-AUDI for details. 6 Always pay careful attention to the road, and do not drive while distracted. Connect PRIME services are optional, may require an additional subscription with separate terms and conditions, and should be used only when it is safe and appropriate. Trial or paid subscription required. Connect PRIME services require vehicle cellular connectivity and availability of vehicle GPS signal; certain services collect location information, see Terms of Service for information about how to disable. See Terms of Service, Privacy Policy, and other details at www.audiusa.com/audiconnect-privacy and www.audiusa.com/audiconnect-terms. Connect PRIME services should only be used when it is safe and appropriate. 7 Pre-paid session-based plans, available for domestic use only. Plans expire when full data allotment is used or time period ends, whichever comes first. Monthly plans auto-renew every 30 days and charges are billed to the credit card on file on the last day of the 30-day term, for the next 30-day time period, unless canceled. To cancel monthly plans at any time, visit myaudiconnect.com or call 1-877-505-2834. Other plans do not auto-renew. Wi-Fi: Connectivity for up to 8 Wi-Fi capable devices. General Wireless Service Terms: Subject to the Session Based Wireless Data Services Agreement. Other restrictions and terms apply and may result in service termination and/or limitations. Coverage and service not available everywhere.

# S3

## Premium Plus and Prestige



2017 Audi S3 Premium Plus shown in Vegas Yellow (left).  
2017 Audi S3 Prestige shown in Navarra Blue metallic with optional Dynamic package (right).

### S3 Premium Plus Featured highlights



In addition to or replaces highlighted features of A3 Sedan Premium Plus

#### Engineering/Performance

- > 2.0-liter TFSI® turbocharged four-cylinder
- > 292 hp/280 lb-ft of torque
- > Acceleration (0–60 mph) in 4.7 seconds
- > Top track speed of 155 mph<sup>1</sup>

#### Transmission/Suspension/Chassis

- > S model sport suspension
- > Audi progressive steering
- > 13.4" ventilated front disc/12.2" ventilated rear disc brakes; front calipers with S logo

#### Exterior

- > 18" 5-arm-dynamic design wheels with 225/40 summer performance tires<sup>2</sup>
- > Platinum Gray Singleframe® grille
- > Full LED headlights
- > LED taillights with dynamic turn signals
- > S model-specific front/rear fasciae and side sills
- > Aluminum-optic front and rear blade fins
- > Aluminum-optic exterior side mirror housings
- > Body-color rear lip spoiler
- > S model quad exhaust outlets

#### Infotainment/Technology

- > Color driver information system
- > Audi drive select

#### Interior/Seating

- > Three-spoke multifunction flat-bottom sport steering wheel with shift paddles with S badging
- > Matte Brushed Aluminum inlays
- > Aluminum door sill inlays with S badging
- > Twelve-way power front sport seats with S embossing, including four-way power lumbar adjustment

### S3 Prestige Featured highlights



In addition to or replaces highlighted features of S3 Premium Plus

#### Infotainment/Technology

- > Technology package
- > Bang & Olufsen® Sound System with 14 speakers and 705 watts

#### Driver Assistance/Innovation

- > Audi active lane assist<sup>3</sup>
- > Audi adaptive cruise control with stop & go<sup>3</sup>
- > High-beam assistant

#### Exterior

- > Power-adjustable, power-folding, heated exterior side mirrors with driver's side auto-dimming

#### Interior

- > Ambient LED interior lighting
- > Interior Storage package

### S3 Premium Plus and Prestige Stand-alone options

- > Rear-passenger thorax side airbags<sup>4</sup>
- > Bang & Olufsen® Sound System (Premium Plus)
- > Red brake calipers
- > 18" 225/40 all-season tires (top track speed lowered to 130 mph)<sup>1,5</sup>

### S3 Premium Plus and Prestige Available packages

#### Technology package (Premium Plus)

- > Audi virtual cockpit
- > MMI® navigation plus with voice control system<sup>6</sup>
- > MMI® touch with handwriting-recognition technology
- > Six-month trial subscription to Audi connect® PRIME and connect® PLUS online services<sup>7,8</sup>
- > Audi side assist with Rear cross traffic assist<sup>3</sup>

#### Dynamic package

- > 19" 5-parallel-spoke star design wheels, anthracite/polished finish with 235/35 summer performance tires<sup>2</sup>
- > Audi magnetic ride

#### Black optic Dynamic package

- > 19" Audi Sport® 5-V-spoke design wheels, titanium-matte finish with 235/35 summer performance tires<sup>2</sup>
- > Audi magnetic ride
- > Gloss black Singleframe® grille
- > Gloss black trim around exterior side windows
- > Body-color exterior side mirror housings

#### S Sport Seat package

- > Fine Nappa leather seats with contrast diamond stitching and S embossing
- > Manually adjustable sport-contoured front seats
- > Door armrests and kneepads in leatherette with contrast stitching

<sup>1</sup> Top track speed electronically limited in U.S. Always obey all speed and traffic laws. <sup>2</sup> These tires may ride less comfortably, make more noise, and wear more quickly than other choices. To avoid tire, rim, or vehicle damage, it is important that inflation pressure is regularly checked and maintained at optimum levels. High-performance tires are designed for optimum performance and handling in warm climates and are not suitable for cold, snowy, or icy weather conditions. When driving during cold, snowy, or icy weather conditions, ensure that your vehicle is equipped with appropriate all-season or winter weather tires. Tires are supplied and warranted by their manufacturer. <sup>3</sup> The features discussed are not a substitute for attentive driving. See Owner's Manual for further details, and important limitations. <sup>4</sup> Airbags are supplemental restraints only and will not deploy under all crash circumstances. Always use safety belts and seat children only in the rear, using restraint systems appropriate for their size and age. <sup>5</sup> These tires may ride less comfortably, make more noise, and wear more quickly than other choices. To avoid tire, rim, or vehicle damage, it is important that inflation pressure is regularly checked and maintained at optimum levels. Tires are supplied and warranted by their manufacturer. <sup>6</sup> Audi Navigation plus depends on signals from the worldwide Global Positioning Satellite network. The vehicle's electrical system, and existing wireless and satellite technologies, must be available and operating properly for the system to function. The system is designed to provide you with suggested routes in locating addresses, destination and other points of interest. Changes in street names, construction zones, traffic flow, points of interest and other road system changes are beyond the control of Audi of America, Inc. Complete detailed mapping of lanes, roads, streets, toll roads, highways, etc., is not possible, therefore you may encounter discrepancies between the mapping and your actual location. Please rely on your individual judgment in determining whether or not to follow a suggested Audi navigation plus route. Periodically the mapping is updated and a new DVD will be required in order to maintain the latest navigation information available to us. These will be available for purchase from time to time at additional cost. Consult your dealer or call 1-800-FOR-AUDI for details. <sup>7</sup> Always pay careful attention to the road, and do not drive while distracted. Connect PRIME services are optional, may require an additional subscription with separate terms and conditions, and should be used only when it is safe and appropriate. Connect PRIME services require vehicle cellular connectivity and availability of vehicle GPS signal; certain services collect location information, see Terms of Service for information about how to disable. See Terms of Service, Privacy Policy, and other details at [www.audiusa.com/audiconnect-privacy](http://www.audiusa.com/audiconnect-privacy) and [www.audiusa.com/audiconnect-terms](http://www.audiusa.com/audiconnect-terms). Connect PRIME services should only be used when it is safe and appropriate. <sup>8</sup> Pre-paid session-based plans, available for domestic use only. Plans expire when full data allotment is used or time period ends, whichever comes first. Monthly plans auto-renew every 30 days and charges are billed to the credit card on file on the last day of the 30-day term, for the next 30-day time period, unless canceled. To cancel monthly plans at any time, visit [myaudiconnect.com](http://myaudiconnect.com) or call 1-877-505-2834. Other plans do not auto-renew. Wi-Fi: Connectivity for up to 8 Wi-Fi capable devices. General Wireless Service Terms: Subject to the Session Based Wireless Data Services Agreement. Other restrictions and terms apply and may result in service termination and/or limitations. Coverage and service not available everywhere.

# Technical Specifications

| Engineering   Performance                                    | A3 2.0T                  | A3 2.0T quattro®         | A3 Sportback e-tron®     | S3  |
|--|--------------------------|--------------------------|--------------------------|---|
| Engine type  | Four-cylinder            | Four-cylinder            | Four-cylinder            | Four-cylinder   |
| Engine block/Cylinder head                                   | Cast-iron/Aluminum-alloy | Cast-iron/Aluminum-alloy | Cast-iron/Aluminum-alloy | Cast-iron/Aluminum-alloy  |
| Displacement (cc)/Bore and stroke (mm)                       | 1,984/82.5 x 92.8        | 1,984/82.5 x 92.8        | 1,395/74.5 x 80.0        | 1,984/82.5 x 92.8   |
| Horsepower (@ rpm)   | 186 @ 4,400–6,000        | 220 @ 4,500–6,200        | 204 (combined)           | 292 @ 5,400–6,200   |
| Torque (lb-ft @ rpm)   | 221 @ 1,600–4,300        | 258 @ 1,600–4,400        | 258 (combined)           | 280 @ 1,900–5,300   |
| Liquid-cooled three-phase hybrid AC electric motor/generator | —                        | —                        | ■                        | —   |
| 8.8-kWh lithium-ion hybrid battery                           | —                        | —                        | ■                        | —   |
| Compression ratio  | 11.7:1                   | 9.6:1                    | 10.0:1                   | 9.3:1   |
| Valvetrain   | 16-valve DOHC            | 16-valve DOHC            | 16-valve DOHC            | 16-valve DOHC   |
| Induction/Fuel injection                                     | Turbocharged/TFSI®       | Turbocharged/TFSI®       | Turbocharged/TFSI®       | Turbocharged/TFSI®  |
| Acceleration, Sedan/Cabriolet/Sportback e-tron® (0–60 mph)   | 6.6/6.9/— seconds        | 5.8/5.9/— seconds        | NA                       | 4.7/—/— seconds   |
| Top track speed  | 130 mph <sup>1</sup>     | 130 mph <sup>1</sup>     | 130 mph <sup>1</sup>     | 155 mph <sup>1</sup> (130 mph when equipped with optional all-season tires) |

| Transmission   Drivetrain  | A3 2.0T         | A3 2.0T quattro® | A3 Sportback e-tron® | S3 |
|--|-----------------|------------------|----------------------|----|
| S tronic® dual-clutch transmission with front-wheel drive                  | ■ (seven-speed) | —                | ■ (six-speed)        | —  |
| Six-speed S tronic® dual-clutch transmission with quattro® all-wheel drive | —               | ■                | —                    | ■  |

| Body   Suspension   Chassis                                     | A3 2.0T   | A3 2.0T quattro® | A3 Sportback e-tron® | S3                            |
|---|-----------|------------------|----------------------|-------------------------------|
| Lightweight construction technology                             | ■         | ■                | ■                    | ■                             |
| MacPherson strut front suspension and four-link rear suspension | ■         | ■                | ■                    | ■                             |
| Sport suspension  | Available | Available        | —                    | —                             |
| S3 sport suspension   | —         | —                | —                    | ■                             |
| Audi magnetic ride suspension                                   | —         | —                | —                    | Available                     |
| Front and rear disc brakes (in)                                 | 12.3/10.7 | 12.3/10.7        | 12.3/10.7            | 13.4/12.2                     |
| Electromechanical power steering system                         | ■         | ■                | ■                    | ■ (Audi progressive steering) |
| Steering ratio  | 15.3:1    | 15.3:1           | 15.3:1               | 14.3:1                        |
| Turning diameter, curb-to-curb (ft)                             | 36.1      | 36.1             | 35.8                 | 36.1                          |

| Exterior measurements                               | A3 2.0T       | A3 2.0T quattro® | A3 Sportback e-tron® | S3        |
|---|---------------|------------------|----------------------|-----------|
| Wheelbase, Sedan/Cabriolet/Sportback e-tron® (in)   | 103.8/102.2/— | 103.8/102.2/—    | —/—/103.5            | 103.6/—/— |
| Length, Sedan/Cabriolet/Sportback e-tron® (in)      | 175.7/174.3/— | 175.7/174.3/—    | —/—/169.7            | 175.8/—/— |
| Height, Sedan/Cabriolet/Sportback e-tron® (in)      | 55.7/55.5/—   | 55.7/55.5/—      | —/—/56.1             | 54.8/—/—  |
| Overall width with mirrors (in)                     | 77.2          | 77.2             | 77.4                 | 77.2      |
| Track, front/rear (in)                              | 61.2/60.1     | 61.2/60.1        | 60.7/59.6            | 61.1/60.1 |
| Curb weight, Sedan/Cabriolet/Sportback e-tron® (lb) | 3,197/3,428/— | 3,362/3,627/—    | —/—/3,616            | 3,461/—/— |
| Drag coefficient (C <sub>w</sub> )                  | .30           | .30              | .32                  | .31       |

| Interior measurements                                       | A3 2.0T   | A3 2.0T quattro® | A3 Sportback e-tron® | S3        |
|---|-----------|------------------|----------------------|-----------|
| Head room with sunshade, Sedan (in, front/rear)             | 36.5/36.1 | 36.5/36.1        | —                    | 36.5/36.1 |
| Head room, Cabriolet (in, front/rear)                       | 37.4/36.3 | 37.4/36.3        | —                    | —         |
| Head room with sunshade, Sportback e-tron® (in, front/rear) | —         | —                | 38.7/37.5            | —         |
| Leg room, Sedan (in, front/rear)                            | 41.2/35.1 | 41.2/35.1        | —                    | 41.2/35.1 |
| Leg room, Cabriolet (in, front/rear)                        | 41.2/31.9 | 41.2/31.9        | —                    | —         |
| Leg room, Sportback e-tron® (in, front/rear)                | —         | —                | 41.2/35.4            | —         |
| Shoulder room, Sedan (in, front/rear)                       | 54.8/53.0 | 54.8/53.0        | —                    | 54.8/53.0 |
| Shoulder room, Cabriolet (in, front/rear)                   | 54.8/45.7 | 54.8/45.7        | —                    | —         |
| Shoulder room, Sportback e-tron® (in, front/rear)           | —         | —                | 54.8/52.9            | —         |
| Cargo volume, Sedan/Sportback e-tron® (cu ft)               | 12.3/—    | 10.0/—           | —/13.6               | 10.0/—    |
| Cargo volume, Cabriolet (cu ft, with roof folded)           | 9.9/7.1   | 9.9/7.1          | —                    | —         |
| Seating capacity, Sedan/Cabriolet/Sportback e-tron®         | 5/4/—     | 5/4/—            | —/—/5                | 5/—/—     |

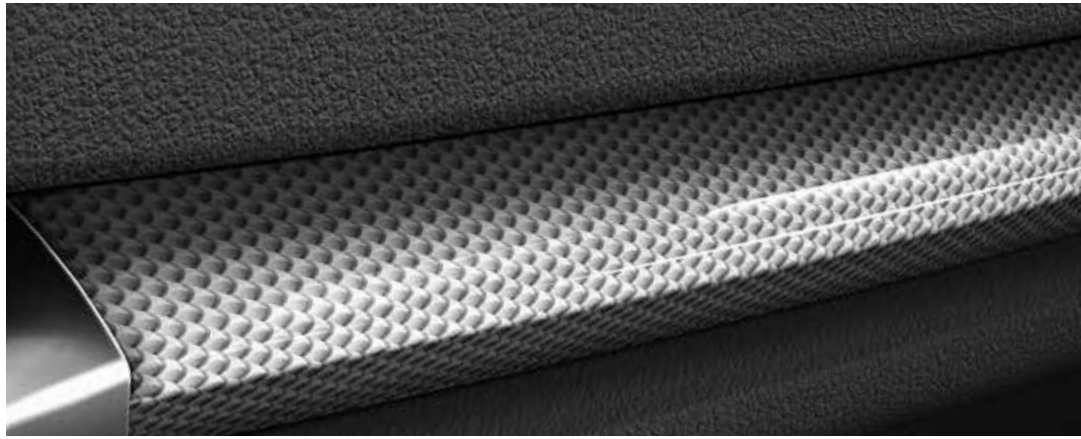
| EPA mileage estimates   Capacities                                      | A3 2.0T           | A3 2.0T quattro®  | A3 Sportback e-tron® | S3                |
|---|-------------------|-------------------|----------------------|-------------------|
| S tronic® dual-clutch transmission (city/highway/combined) <sup>2</sup> | NA                | NA                | NA                   | 21/28/24          |
| Engine oil (qt)   | 6.0               | 6.0               | 4.2                  | 6.0               |
| Fuel (gal)  | 13.2 <sup>3</sup> | 14.5 <sup>3</sup> | 10.6 <sup>3</sup>    | 14.5 <sup>3</sup> |
| Recommended fuel  | Premium           | Premium           | Premium              | Premium           |

<sup>1</sup> Top track speed is electronically limited in the U.S. Always obey all speed and traffic laws. <sup>2</sup> 2017 EPA estimates not available at time of publication. See [www.fueleconomy.gov](http://www.fueleconomy.gov) for 2017 EPA estimates. Your mileage will vary and depends on several factors, including your driving habits and vehicle condition. <sup>3</sup> Never drive until the tank is completely empty. The irregular supply of fuel that results from that can cause engine misfires. Uncombusted fuel will then enter the exhaust system. This can cause overheating and damage to the catalytic converter.

■ Standard — Not applicable NA Information not available at time of printing



## Interior Inlays



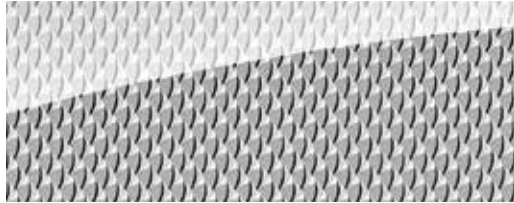
3D Optic interior inlay shown.

### Micrometallic Silver



Standard on A3 Sedan, A3 Cabriolet, A3 Sportback e-tron®

### 3D Optic



Optional on A3 Sportback e-tron®

### Aluminum Mistral



Optional on A3 Sedan, A3 Cabriolet

### Matte Brushed Aluminum



Standard on S3

## Interior Colors and Seat Selections

### Black leather



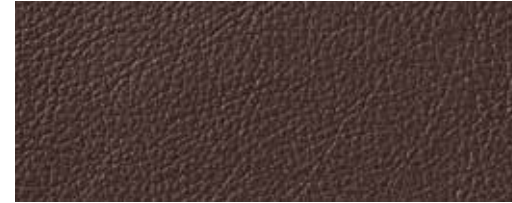
Standard seat, Sport seat

### Rock Gray leather



Standard seat, Sport seat

### Chestnut Brown leather



Standard seat, Sport seat

### Black leather with Rock Gray contrast stitching



Sport seat (S3 only)

### Magma Red leather with Anthracite contrast stitching



Sport seat (S3 only)

### Black Fine Nappa leather with Rock Gray contrast diamond stitching



S sport seat (S3 only)



Standard seat



Sport seat



S sport seat

## Wheels

17" 5-arm design



Standard on A3 (Sedan, Cabriolet)

17" 10-spoke-turbine design



Optional on A3 Premium (Sedan, Cabriolet)

18" 5-double-spoke design, contrasting gray/polished finish



Standard on A3 Premium Plus and Prestige (Sedan, Cabriolet)  
Optional on A3 Premium (Sedan, Cabriolet)

18" Audi Sport® 10-V-spoke design



Optional on A3 Premium Plus (Sedan, Cabriolet)

19" 5-arm-wing design, anthracite/polished finish



Optional on A3 Premium Plus and Prestige (Sedan, Cabriolet)

17" 15-spoke-turbine design



Standard on A3 Sportback e-tron®

18" 15-spoke-turbine design



Optional on A3 Sportback e-tron®

18" 5-arm-dynamic design



Standard on S3

19" 5-parallel-spoke star design, anthracite/polished finish



Optional on S3

19" Audi Sport® 5-V-spoke design, titanium-matte finish



Optional on S3

## Exterior Colors

Brilliant Black



A3, S3

Ibis White



A3

Vegas Yellow



S3

Cosmos Blue metallic



A3

Florett Silver metallic



A3, S3

Glacier White metallic



A3, S3

Monsoon Gray metallic



A3

Mythos Black metallic



A3, S3

Nano Gray metallic



A3, S3

Tango Red metallic



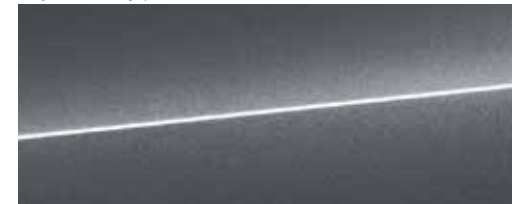
A3, S3

Navarra Blue metallic



S3

Daytona Gray pearl



S3

Ara Blue crystal



S3 (delayed availability)



A3  
2017

Audi of America  
[Audiusa.com](http://Audiusa.com)  
[Facebook.com/Audi](https://Facebook.com/Audi)

Note: A word about this brochure. Audi of America, Inc., believes the specifications in this brochure to be correct at the time of printing. However, specifications, standard equipment, options, fabrics, and colors are subject to change without notice. Some equipment may be unavailable when your vehicle is built. Please ask your dealer for advice concerning current availability of standard and optional equipment, and your dealer will verify that your vehicle will include the equipment you ordered. Vehicles in this brochure are shown with optional equipment. See your dealer for complete details on the Audi New Vehicle Limited Warranty, twelve-year limited warranty against corrosion perforation, and Audi 24/7 Roadside Assistance. (Roadside assistance coverage provided by Road America in the U.S. Certain conditions apply; see your dealer for details.) Tires supplied by various manufacturers. "Audi," all model names, "Audi connect," "Audi pre sense," "Audi Sport," "e-tron," "MMI," "quattro," "S line," "S tronic," "Sideguard," "Singleframe," "TFSI" and the four rings logo are registered trademarks of AUDI AG. "Apple," "App Store," "Apple Music," "iPhone" and Siri are registered trademarks of Apple Inc. "Apple CarPlay" is a trademark of Apple, Inc. "Bang & Olufsen" is a registered trademark of Bang & Olufsen. The BLUETOOTH word mark and logos are owned by the Bluetooth SIG, Inc., and any use of such marks by AUDI AG is under license. "Contigo" is a registered trademark of Ignite USA, LLC. "Google," "Google Maps" and "Google Play" are trademarks of Google Inc. © 2016 Google Inc. All rights reserved. "HD Radio" and the HD Radio logo are proprietary trademarks of iBiquity Digital Corporation. "SiriusXM" and all related marks and logos are trademarks of Sirius XM Radio Inc. and its subsidiaries. "Spyder" is a registered trademark of Spyder Active Sports, Inc. "Wi-Fi" is a registered trademark of the Wi-Fi Alliance. All other trademarks are the property of their respective owners. Some European models shown. Some features may not be available at time of order.