

2020 Hyundai

ACCENT





It's the perfect fit for all of your dreams.

The car industry loves to classify cars by size. And while that sort of segmentation can be useful, all you really want to know is this: Does it fit your dreams?

Does its sense of style match your lifestyle? Does it offer smart technologies to help keep you and your passengers better connected? Better protected? And totally comfortable? Can its nimble handling and responsive performance make you feel more empowered?

As you get to know the 2020 Hyundai Accent, you'll find it's the perfect size for what your future holds. With its cascading chrome grille, available 17" alloy wheels and wraparound headlights and taillights, Accent looks right at home among those valet-parking-only luxury sedans. Yet it's agile in traffic, easy to park – and doesn't guzzle gas.

Step inside, and you're welcomed by a modern-looking interior that feels surprisingly roomy and refined. Accent is also tech-savvy, with available Apple CarPlay,¹ Android Auto™ and Hyundai Blue Link[®] features that turn your smartphone into a powerful point of contact with your car.¹ Most important, Accent offers a level of safety that's made it a 2019 IIHS Top Safety Pick when equipped with optional Forward Collision-Avoidance Assist and LED headlights.²

For added peace-of-mind, Hyundai Accent is backed by America's Best Warranty. All of this with a car that's affordable, too? Now *that's* living the dream.

"Drivers with longer commutes won't regret choosing this Accent over a larger, more expensive car. It's a solid pick for its satisfying combination of performance, utility, comfort and style."³ – *Edmunds Expert Review*



¹Apple CarPlay and Android Auto standard on Accent SEL and Limited. Hyundai Blue Link standard on Accent Limited. ²Forward Collision-Avoidance Assist (FCA) is designed to assist drivers to avoid, or reduce the severity of, collisions with cars that have slowed or stopped in front of them. It is a supplemental assist and does not replace the need for extreme care and attention by the driver. FCA may not stop the vehicle completely and will not avoid all collisions. See Owner's Manual for details. ³Edmunds Expert Review, 2019 Hyundai Accent.



¹To qualify for a 2019 TOP SAFETY PICK, a vehicle must earn Good ratings in the driver-side small overlap front, moderate overlap front, side, roof strength and head restraint tests, as well as an Acceptable or Good rating in the passenger-side small overlap front test. It also must earn an Advanced or Superior rating for front crash prevention and an Acceptable or Good headlight rating. For details, visit iihs.org. ²Claim based on comparison of specifications on manufacturer websites at the time of printing. ³Available on Accent SE, standard on SEL and Limited. ⁴EPA estimate for vehicles equipped with a Smartstream Intelligent Variable Transmission. Estimates are for comparison only. Mileage may vary. Your actual mileage will vary with options, driving conditions, driving habits and the vehicle's condition.

ACCENT Limited in Urban Gray

The unseen advantages of the 2020 Accent.

Hidden under Accent's stylish exterior is a chassis forged with high-strength steel. This advanced material gives Accent what engineers call torsional rigidity – a resistance to twisting forces. It translates steering inputs and suspension reflexes into a smooth, substantial driving feel – the kind you'd think only a larger, more luxurious car could provide. When you take your test drive, listen to how quiet – and feel how calm – Accent is over rough roads. And be sure to note the steering precision in corners, too.

The use of high-strength steel has also helped Accent earn a 2019 Top Safety Pick rating by the IIHS.¹ It enhances the ability of Accent to withstand impact forces in a collision. Of course, our hope is that you never have an accident in the first place. Which is why Accent Limited comes equipped with Forward Collision-Avoidance Assist technology.

For 2020, Accent is the only car in its class to offer available 4-wheel disc brakes.² Press the brake pedal, and it responds with swift, sure stopping power. Press the gas pedal, and you'll feel the quick acceleration of a spirited 1.6L 4-cylinder engine and all-new proprietary Smartstream Intelligent Variable Transmission.³ You'll see advantages at the gas pump, too – Accent has an EPA-estimated 41 MPG highway rating.⁴



Forward Collision-Avoidance Assist
4-wheel disc brakes

Rearview camera with dynamic guidelines
LED headlights

ACCENT Safety Technologies



ABS with Brake Assist

Vehicle Stability Management

Forward Collision-Avoidance Assist

Tire Pressure Monitoring System

Traction Control System



2019 IIHS Top Safety Pick

Hyundai's commitment to the highest standards for safety is evident in Accent being named a 2019 IIHS Top Safety Pick when equipped with optional Forward Collision-Avoidance Assist and LED headlights.¹

Welcome to better.

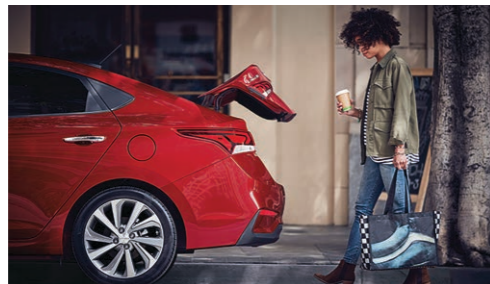
At Hyundai, everything we do is focused on one thing: Better. If you've compared Accent to its competitors, you'll see how our belief in better translates into practice – we filled Accent with a long list of upscale features that are hard to find in other cars in this class.

Settle into Accent Limited's driver seat on a frosty morning, and you'll quickly appreciate the heated front seats with three levels of heat settings. Automatic temperature control maintains your preferred cabin climate, while fingertip controls let you quickly set your preferred positions for the heated side mirrors and leather-wrapped, tilt-and-telescopic steering wheel. Now look up – a power tilt-and-slide sunroof is overhead.

We also found better ways to let you access your car. When approaching your Accent Limited, a Proximity Key lets you unlock your door without fumbling for keys. Approaching your car with an armful of shopping bags? Limited's hands-free smart trunk senses your presence and pops the trunk release for easy access to a cargo area that swallows six carry-on sized suitcases.¹ Accent's 60/40 split-folding rear seats also give you the flexibility to carry people or extra cargo.



7" touchscreen audio display



Hands-free smart trunk release



60/40 split-folding rear seats



Automatic temperature control



The hands-free smart trunk will open when your Proximity Key is within 3 feet of the detection area for at least 3 seconds. Radio transmitters and other vehicle smart keys may interfere with normal operation. See Owner's Manual for details.



ACCENT Limited in Olympus Silver

Technology this amazing borders on magic.

Thankfully, there's no trick to enjoying all of the innovations available with Accent. In fact, it's easy. Apple CarPlay® and Android Auto™ pair your compatible smartphone with Accent's 7" touchscreen audio display – standard on SEL and Limited.¹ Using the car's touchscreen or voice commands, you can access your smartphone's music, messages, navigation and more.

Fingertip controls on the available tilt-and-telescopic steering wheel let you adjust audio and cruise control settings, or make calls with Accent's Bluetooth® hands-free phone system. Keeping your smartphone and other devices powered is easy, too – Accent comes standard with convenient front and available rear-seat USB charge ports.

Then there's Hyundai Blue Link,[®] a technology that transforms Accent Limited into a vehicle unlike any you've ever owned.² Blue Link Connected Care, free for the first 3 years of ownership, offers Enhanced Roadside Assistance, 24/7 SOS Emergency Assistance and Automatic Collision Notification that calls for help if you've been in an accident where an airbag has been deployed.³

With the MyHyundai smartphone app, life between your home, your workplace and your Hyundai is seamless. While you're getting ready to leave, Blue Link lets you remotely start Accent Limited's engine and warm or cool its interior.⁴ You can also download Blue Link for Apple Watch™ or Android Wear™ and lock/unlock your Accent's doors or start the engine from almost anywhere. Now that's truly magical.



"While other automakers are still implementing them even in larger and more expensive models, Hyundai makes it (Android Auto and Apple CarPlay) readily available in its least expensive car."⁶ – Kelley Blue Book

¹ Apple CarPlay works with iPhone 5s, iPhone 5c, iPhone 5 and later models running the latest version of iOS 7 and above. Apple and Apple CarPlay are registered trademarks of Apple Inc. Android Auto works with smartphones running on Android 5.0 Lollipop and higher. Android, Android Auto, Google Play and other marks are trademarks of Google Inc. ² Blue Link Connected Care and Remote packages are complimentary for the first 3 years of ownership and require an active Blue Link subscription agreement subject to the Connected Services Terms and Conditions. Three-year term starts from the new vehicle date-of-first-use, is available for new vehicle purchases and leases, and is transferable to subsequent owners subject to the Terms and Conditions. Only use Blue Link and corresponding devices when safe to do so. Cellular and GPS coverage is required. Features, specifications and fees are subject to change. For more on details and limitations, visit hyundai.com or your authorized Hyundai dealer. ³ Blue Link agents will contact existing emergency service responders. ⁴ Requires Accent Limited with Blue Link Remote package. Remote stop only available when in remote start mode. ⁵ Smartphone GPS location must be within 1-mile radius of vehicle's location to display searched location. ⁶ From "New 2019 Hyundai Accent Sedan" on Kelley Blue Book's KBB.com. Kelley Blue Book is a registered trademark of Kelley Blue Book Co., Inc.

Automatic Emergency Assistance
Blue Link Connected Care offers 24/7 SOS Emergency Assistance and Automatic Collision Notification that calls for help if you're in an accident where an airbag deploys.³

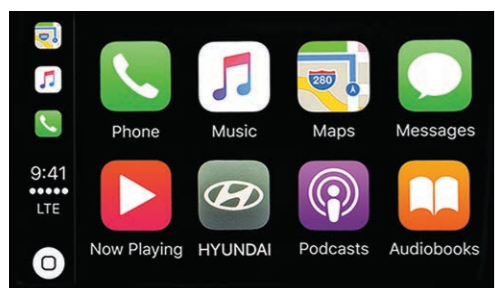
On-Demand Diagnostics
Run vehicle diagnostics from your Accent's touchscreen, report issues at the press of a button, and receive Monthly Vehicle Health Reports or maintenance reminders by email.

Customizable Alerts
Proud parent of a teen driver? Hyundai Blue Link lets you set curfew, geofence and speed alerts so you can relax when your loved ones are on the road.

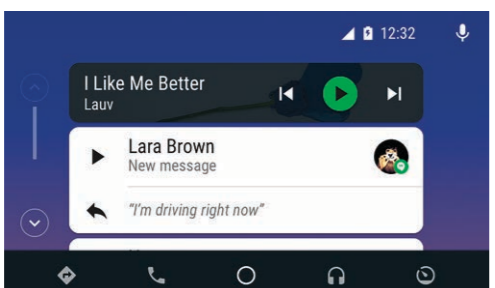
Remote Controls
Use your smartphone, home assistant or wearable device to remotely start your Accent's engine, unlock the doors, set the cabin temperature and more.⁴

Car Finder
Our Car Finder smartphone app feature lets you navigate your way through crowded parking lots back to your Accent.⁵

Service Link
Conveniently schedule your car for service from the driver seat of your Accent, or by using the MyHyundai smartphone app.



Apple CarPlay



Android Auto



Steering wheel audio controls



Rear-seat USB charge port

ACCENT SE

Smartstream 1.6L 4-cylinder

hp **120**

lb-ft **113**



Popular Features

- 5" color touchscreen display audio system
- Rearview camera with dynamic guidelines
- Steering wheel audio and cruise controls
- Bluetooth® hands-free phone system
- Choice of 6-speed manual transmission or Smartstream Intelligent Variable Transmission

ACCENT Limited

Smartstream 1.6L 4-cylinder

hp **120**

lb-ft **113**

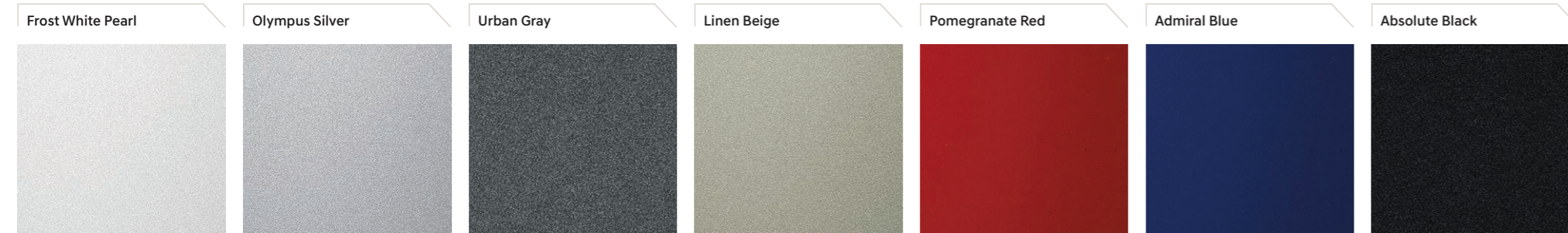


Popular Features

- Proximity Key with push button start
- Forward Collision-Avoidance Assist
- LED headlights, LED Daytime Running Lights and LED taillights
- Automatic temperature control with auto-defogging windshield
- Heated front seats

¹EPA estimates for comparison only. Your actual mileage will vary with options, driving conditions, driving habits and the vehicle's condition.

Exterior Colors



ACCENT SEL

Smartstream 1.6L 4-cylinder

hp **120**

lb-ft **113**



Popular Features

- 7" color touchscreen AM/FM/SiriusXM/MP3 audio system with 6 speakers
- Android Auto™ and Apple CarPlay®
- Front and rear-seat USB charge ports
- Tilt-and-telescopic steering wheel
- Automatic headlights

EPA MPG Estimates
City/Highway/Combined¹

33/41/36 Smartstream Intelligent Variable Transmission

Wheels

SE
15" Steel Wheel



SEL
15" Alloy Wheel



Limited
17" Alloy Wheel

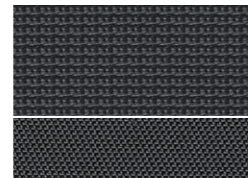


Interior Colors

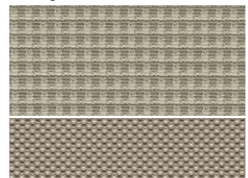
Limited
Black Cloth



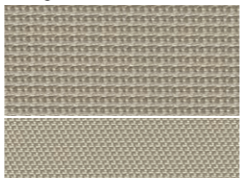
SE/SEL
Black Cloth



Limited
Beige Cloth



SE/SEL
Beige Cloth



ACCENT

Power & Handling

| | SE | SEL | Limited |
|--|----|-----|---------|
| 120 hp/113 lb-ft, Smartstream 1.6L Dual Port Injection 4-cylinder engine | ● | ● | ● |
| 6-speed manual transmission | ● | – | – |
| Smartstream Intelligent Variable Transmission with SHIFTRONIC® control | ○ | ● | ● |
| Ventilated front disc brakes | ● | ● | ● |
| Rear disc brakes | – | ● | ● |
| Motor Driven Power Steering | ● | ● | ● |

Exterior Features

| | | | |
|---|---|---|---|
| Chrome grille | ● | ● | ● |
| Automatic headlights | – | ● | ● |
| LED headlights and LED taillights | – | – | ● |
| LED Daytime Running Lights | – | – | ● |
| Front foglights | – | ● | ● |
| Power tilt-and-slide sunroof | – | – | ● |
| Bodycolor exterior door handles | ● | ● | – |
| Chrome exterior door handles | – | – | ● |
| Chrome lower side-window molding | – | ● | ● |
| Power windows | ● | ● | ● |
| Power bodycolor side mirrors | ● | ● | ● |
| Side mirrors with turn signal indicators | – | – | ● |
| Heated side mirrors with driver blind spot mirror | – | ● | ● |
| Hands-free smart trunk release | – | – | ● |
| Intermittent windshield wipers | ● | ● | ● |
| Rear window defroster with timer | ● | ● | ● |
| Rearview camera with dynamic guidelines | ● | ● | ● |

Interior Features

| | | | |
|--|---|---|---|
| Remote keyless entry system with panic button | ● | ● | – |
| Proximity Key entry with push button start | – | – | ● |
| 3.5" multi-information display | – | – | ● |
| Tilt steering wheel | ● | – | – |
| Tilt-and-telescopic steering wheel | – | ● | ● |
| Steering wheel audio and cruise controls | ● | ● | ● |
| Leather-wrapped steering wheel and shift knob | – | – | ● |
| Automatic temperature control | – | – | ● |
| Auto-defogging windshield | – | – | ● |
| Heated front seats | – | – | ● |
| 6-way adjustable driver seat including height adjustment | ● | ● | ● |
| Cloth seating surfaces and door inserts | ● | ● | ● |
| 60/40 split-folding rear seats | ● | ● | ● |

ACCENT

Interior Features

| | SE | SEL | Limited |
|--|----|-----|---------|
| Sliding sunvisors with dual vanity mirrors | ● | ● | ● |
| One-touch driver's auto-up window | – | ● | ● |
| Center console storage with sliding armrest | – | ● | ● |
| Cabin air filter | ● | ● | ● |
| Hood insulator | ● | ● | ● |
| Front and rear-seat USB charge ports | – | ● | ● |
| One-touch triple turn signal | ● | ● | ● |
| Smartphone/USB and MP3 auxiliary input jacks | ● | ● | ● |

Advanced Safety

| | | | |
|---|---|---|---|
| Forward Collision-Avoidance Assist | – | – | ● |
| 6-airbag safety system: Front, front side-impact and side-curtain airbags with Occupant Classification System | ● | ● | ● |
| Vehicle Stability Management | ● | ● | ● |
| Electronic Stability Control with Traction Control System | ● | ● | ● |
| ABS with Electronic Brake-force Distribution and Brake Assist | ● | ● | ● |
| Hillstart Assist Control (Intelligent Variable Transmission only) | ○ | ● | ● |

Audio & Connected Car Technology

| | | | |
|--|---|---|---|
| 5" color touchscreen display audio system with 4 speakers | ● | – | – |
| 7" color touchscreen AM/FM/SiriusXM/MP3 audio system with 6 speakers | – | ● | ● |
| Bluetooth® hands-free phone system | ● | ● | ● |
| Android Auto™ and Apple CarPlay® | – | ● | ● |
| Blue Link® Connected Car System (3 years complimentary) | – | – | ● |

● Standard ○ Optional – Not Available

Exterior Dimensions

| | ACCENT |
|----------------------------------|----------|
| Wheelbase | 101.6 in |
| Overall Length | 172.6 in |
| Overall Width (excludes mirrors) | 68.1 in |
| Overall Height | 57.1 in |
| Coefficient of Drag | 0.28 Cd |

Interior Dimensions

| | ACCENT |
|------------------------------|----------------|
| Headroom – front / rear | 38.9 / 37.3 in |
| Legroom – front / rear | 42.1 / 33.5 in |
| Shoulder Room – front / rear | 54.2 / 53.7 in |
| Hip Room – front / rear | 51.7 / 50.8 in |



Hyundai Hope On Wheels®

Helping Kids Fight Cancer Since 1998



Hope makes every Hyundai better.

Each time we sell a Hyundai, a portion goes to Hyundai Hope On Wheels® to help find a cure for childhood cancer. Over the last 21 years, Hyundai Hope On Wheels has donated more than \$160 million. Hope is our greatest feature. And it comes standard on every Hyundai. For more information, please visit HyundaiHopeOnWheels.org.



America's Best Warranty

POWERTRAIN LIMITED WARRANTY

10 YEARS 100,000 MILES

NEW VEHICLE LIMITED WARRANTY

5 YEARS 60,000 MILES

ANTI-PERFORATION WARRANTY

7 YEARS UNLIMITED MILES

24/7 ROADSIDE ASSISTANCE

5 YEARS UNLIMITED MILES

HYUNDAI Assurance
HYUNDAIASSURANCE.COM

Our commitment to Hyundai owners doesn't end with the transfer of keys. Wherever the road takes you, we've got your back with Hyundai Assurance, an umbrella of services and benefits that includes America's Best Warranty, 24/7 Roadside Assistance, innovative safety and car care features...and more.

See dealer for LIMITED WARRANTY details. Fuel economy estimated by EPA for comparison only. Mileage may vary. While the information contained in this brochure was correct at the time of printing, specifications and equipment can change. Feature comparisons based on competitor information available at the time of printing. No warranty or guarantee is being extended in this brochure, and Hyundai reserves the right to change product specifications and equipment at any time without incurring obligations. Some vehicles are shown with optional equipment. Specifications apply to U.S. vehicles only. Please contact your Hyundai dealer for current vehicle specifications. As part of Hyundai's commitment to a responsible environment, this brochure was printed using paper certified by the Forest Stewardship Council®. FSC® certification helps ensure that the highest social and environmental standards are met in the making of the paper we use, contributing to conservation, responsible management and community-level benefits for people near the forests.

