

Scirocco

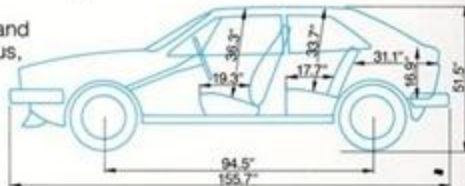
It goes as good as it looks.



Hosted by
A2Resource.com

A lot more space than you'd expect in a sports car.

Slip behind the wheel of a Scirocco, and you'll feel the firm, sure support of spacious, anatomically designed bucket seats. In addition to being fully adjustable, they're also fully reclining. And upholstered in a durable, attractive corduroy. Or optional luxurious leatherette. Facing you is a fully instrumented dash and console. Tachometer, speedometer, trip odometer, temperature gauge, voltmeter, even a precision quartz clock that's as right as everything else about this car. All within easy view. And at your fingertips, a pair of levers on the steering column controlling wiper/washer, high and low beams, passing light and turn signals.



Behind you, there's the other half of Scirocco's honest 2 + 2 seating. And throughout, Scirocco is plushly carpeted and richly appointed.

Raise the hatch, and you'll come face-to-face with 12 cubic feet of deep, flat luggage space concealed beneath a removeable parcel shelf. Flip the rear seatback, and suddenly you've expanded your cargo compartment to 19.1 cubic feet of "anything" space. Anything!

Even a golf bag, scuba gear, folding bike and three good-sized pieces of luggage. With the rear seat folded down, there's actually more cargo space in the back of a

Scirocco than in the trunk of a Cadillac Seville. And with Scirocco, you can carry a bigger load a longer way on a lot less gas.

Uncommonly economical for a performance car.

With most performance cars, you follow up the fun of getting there with an expensive trip to the gas pump. With Scirocco, fill-ups are few and far between. EPA estimates* Scirocco's uncommonly economical gas mileage at 38 mpg highway, 25 mpg city.

But mere mileage is just the beginning of Scirocco's economy story.



To minimize your maintenance, the standard 4-speed gearbox is permanently lubricated. And so is the clutch release bearing. Many common servicing operations have been engineered for simplicity. For example, front-wheel camber can be adjusted by turning just one fitting. And even the fluid levels of the transparent battery and brake fluid reservoir can be checked without removing a single filler cap.

What does all this tell you about Scirocco?

Maybe that this is one car that lets you satisfy your penchant for practicality, without sacrificing any of the fun and handling that come with a sporty performance car.

A high performance dealership to back up your high performance Scirocco.

Like the more than 1,000 other VW service centers from coast-to-coast, your dealership stands behind your Scirocco with a team of VW trained and certified mechanics.

To sharpen the skills of these service professionals, VW offers them advanced training on a regular basis at a number of regional schools.

And to help them do their job quickly and efficiently, there are special VW tools and a well stocked parts department at every dealership. Should a part be out of stock, there's even a national computer network to instantly locate it at regional warehouses or even in the inventory of a nearby dealership.

In addition to giving your Scirocco the best of care, your dealer can also add to your fun and convenience by installing any number of finely finished accessories, all carefully matched to your car's interior or exterior decor.

For the interior, he offers a selection of radios, air conditioning, speed control and floor mats. For the exterior, luggage racks, ski racks, fog lamps, bumper overrides, vent shades, door edge guards and much, much more.

That's the 1978 Scirocco. Practicality, power and performance, all wrapped up in a sleekly styled package that goes as good as it looks.

*Based on 1978 EPA estimated mileage with manual transmission. Your actual mileage may vary, depending on where and how you drive, your car's condition and optional equipment.

Ask your local dealer for a free copy of the EPA/FEA Gas Mileage Guide for New Car Buyers.



**But you have to
live with it to know
how practical
Scirocco is to own.**



At first drive, you know it's a great performance car.

Feel the way Scirocco handles.

The rich surge of power that propels you from 0 to 50 in a mere 8.2 seconds. The front wheel drive, rack and pinion steering and 4-wheel independent suspension that help you negotiate sharp curves with breathtaking precision.

If something tells you this is one car that owes its breeding to race track experience, you're absolutely right.

Specially built Sciroccos have stormed through the TransAm series at speeds exceeding 160 mph. And slightly modified stock Sciroccos have left other cars in their class far behind at tracks across the country.

And no wonder.

Scirocco boasts a unique combination of German engineering advances.

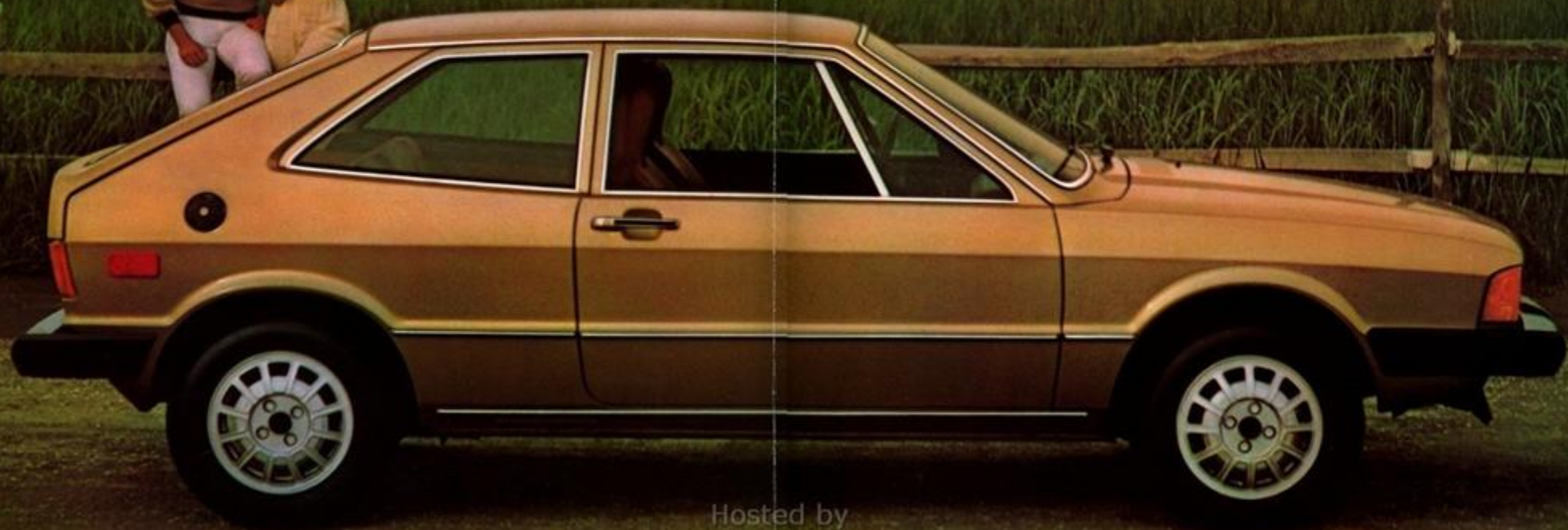


Front wheel drive, transverse engine, negative steering roll radius, rack and pinion steering, low profile steel belted radial tires, 4-wheel independent suspension and a unique stabilizer rear axle.

You won't find them all on any other car at any price.

That engineering combination earned Scirocco a coveted collection of racing cups.

And recently, Scirocco's sleek aerodynamic styling, by Giorgetto Giugiaro of Italy, earned it a special commendation from Fortune - inclusion, along with Porsche 911S Targa, in the magazine's list of the "25 best-designed factory-made products available in America today."



Hosted by
A2Resource.com



Scirocco. It goes
as good as it looks.

In all these colors...

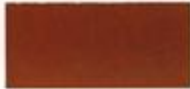
EXTERIOR



DIAMOND SILVER METALLIC



PEARL METALLIC



BRAZIL BROWN METALLIC



COBALT METALLIC

CLOTH



BLACK



SIENNA



PARCHMENT



BEDUIN

LEATHERETTE



BLACK



SIENNA



PARCHMENT



BEDUIN

Scirocco goes as good as it looks.

1978 SCIROCCO SPECIFICATIONS.

ENGINE:

Type	Water-cooled, front mounted, transverse, overhead cam
Cylinders	4 cylinders, in-line
Displacement	88.9 cubic inches (1457cc)
SAE Net HP	(71) (70 California) @ 5800 rpm
Fuel/Air Supply	CIS fuel injection

TRANSMISSION & DIFFERENTIAL:

Type	Fully synchronized, transverse transaxle
No. Speeds	4 forward, 1 reverse
Final Drive	Front wheel drive, double-jointed axles
Clutch	Single disc, dry

CHASSIS & SUSPENSION:

Frame	Unitized body/chassis, bolt-on front fenders
Front suspension	Independent, coil/shock absorber struts with lower triangular control arms, negative steering roll radius
Rear suspension	Coil/shock absorber struts, independent stabilizer axle

Service Brake	Dual diagonal circuit, power-assisted discs/drums
Parking Brake	Cable operated on rear wheels
Rim Size	5J x 13
Tire Size	Steel-belted radial 175/70 SR 13
Steering	Rack and pinion, steering damper

ELECTRICAL SYSTEM:

Rated Voltage	12 Volt, 55 Amp alternator
Battery	12 Volt, 45 Amp/hour

DIMENSIONS:

Wheelbase	94.5 inches
Length	155.7 inches
Width	63.9 inches
Height (Unloaded)	51.5 inches
Ground Clearance (Loaded)	4.6 inches
Turning Circle	31.2 feet (curb to curb)

PERFORMANCE:

Top Speed	103 mph (99 mph Automatic)
Fuel Mileage*	Highway: 38 mpg
	City: 25 mpg

*Based on 1978 EPA estimated mileage with manual transmission. Your actual mileage may vary, depending on where and how you drive, your car's condition and optional equipment. Ask your local dealer for a free copy of the EPA/FEA Gas Mileage Guide for New Car Buyers.

Volkswagen does it again.



AUTHORIZED
DEALER

Hosted by

A2Resource.com