

Rabbit



Rabbit Convertible. A breath of fresh air.

While most of the convertibles being built today skimp on space, the Volkswagen Rabbit Convertible is large enough for four people. Shoulder, leg, and elbow room are remarkably ample, and, of course, there's infinite head room! Plus space for luggage—even with the top down.

All this, despite the fact that Rabbit Convertible is one of the most economical four seater convertibles you can own, and it delivers a pleasing fuel consumption rating of 7.3 l/100 km*, or 39 mpg. Its responsive 1.7 l fuel-injected engine accelerates your top-down driving fun from 0-80 km/h in a mere 9.0 seconds.

As you merrily roll along enjoying the wide open spaces, rain won't put a damper on your fun. Because this is a convertible that converts to a comfortable sedan. The top is insulated and weatherproofed by five distinct layers—and is virtually made by hand. The rear window is made of glass, not plastic, and electrically heated to keep off ice and snow.

The coachwork is by Karmann who are renowned for their craftsmanship, so fit and finish are nothing short of superb.

Inside, you'll find luxurious

appointments with everything from sumptuous upholstery to an AM/FM stereo cassette sound system, complete with right and left speakers in storage boxes on the front doors. And there are front vent windows and remote control outside mirrors on both sides.

In this day of shrinking convertibles and expanding gas prices, you'll find Rabbit Convertible a true breath of fresh air.

* Based on approved Transport Canada test methods. See back cover.



Engineering that means safety, convenience, fuel efficiency.

Rabbit has the kind of quality engineering that's found in far more expensive cars. Rabbits last—and so does the economy that's built in.

Fuel efficiency is, of course, a major consideration these days. You'll find that Rabbit's 1.7 litre overhead cam engine goes easy on the gas. And if you choose Rabbit Diesel, you're getting Canada's fuel economy champion for the last three years.

Rabbit's as sure footed as—well, a rabbit—with its front-wheel drive traction, rack and pinion steering and independent suspension. There's a MacPherson strut system in front, and a unique T-bar "independent stabilizer axle" in the rear.

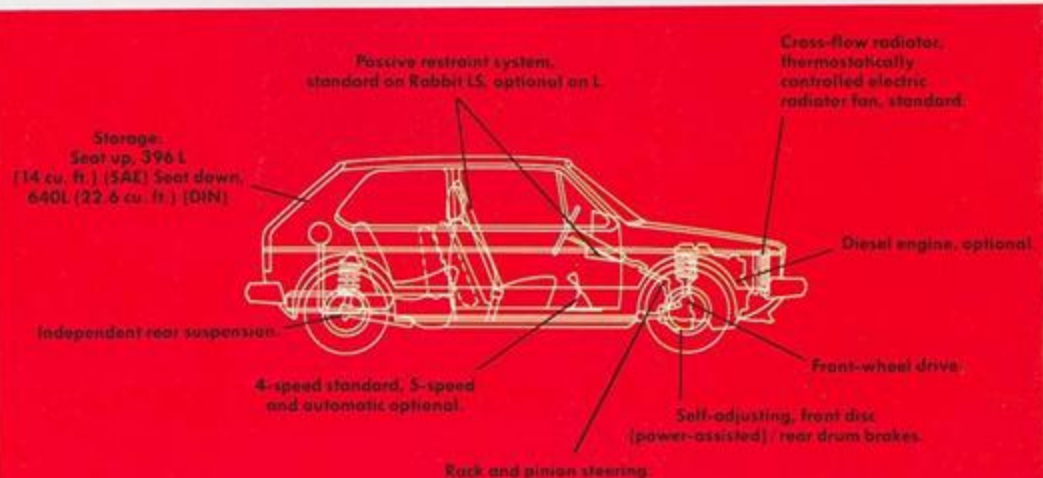
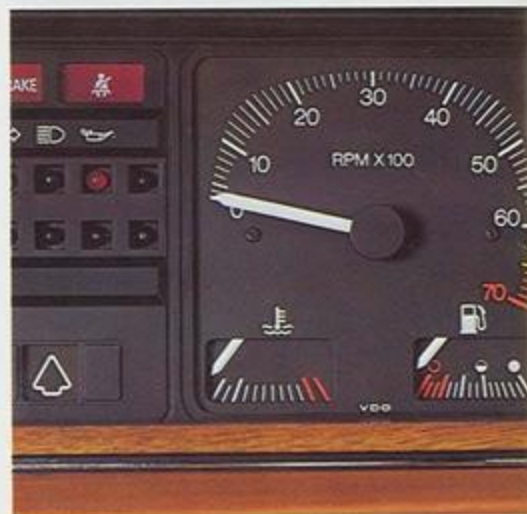
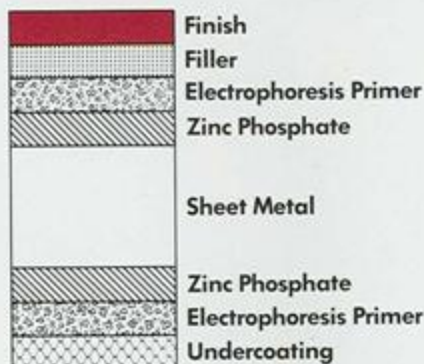
A magnetic primer is locked onto the unitized body by an electroplating process making Rabbit remarkably resistant to corrosion. Undercoating is then applied—a layer of PVC in the wheel wells and wax/bitumen on the underside. Only then does the Rabbit receive its beautifully smooth coat. The result is a car which readily meets the Canadian Federal/Provincial Anti-Corrosion Code, which requires

that vehicles remain free from perforation for 60 months or 200,000 kilometres, whichever occurs first. See your Volkswagen dealer for full details.

Rabbit's optional diesel engine is still another well proven engineering advantage. It uses a swirl type combustion chamber which creates high air turbulence, ensuring good fuel/air mixing. Since combustion forces are "softened" by the swirl chamber, the Volkswagen Rabbit Diesel runs quietly and efficiently.

It also runs seemingly forever. Based on Transport Canada fuel consumption rating of 4.3 litres per 100 kilometres the Rabbit Diesel has a cruising range of 880 kilometres on a single tankful. And with the Rabbit Diesel, you don't need spark plugs, ignition coil, points, condenser, or carburetor.

All manual transmission Rabbits have a new economy feature as well: an "upshift indicator light" on the dashboard which advises you of the proper moment to change to a higher gear. This can save your fuel consumption—a benefit of ever-increasing value. Yet another example of Volkswagen ingenuity paving the way to more efficient fuel usage.



There are more ways than one to own the Original.

RABBIT L

Standard features and equipment at no extra charge

ECONOMY/DURABILITY

- Fuel injected engine, 1.7 (176 HP (105))
- Electronic ignition
- Unique optical indicator light (manual transmission only)
- Heavy duty battery and alternator
- Factory undercoating
- Heat and sound insulation
- Low wind drag coefficient
- Thermodynamically controlled radiator cooling fan
- Protective body side mouldings

SAFETY/SECURITY

- Front wheel drive
- Hydraulic, power assisted and pressure regulated dual diagonal disc brakes at front, self-adjusting
- Rear drum brakes, self-adjusting
- Brake fluid level warning light
- Oil pressure warning system
- Coolant temperature warning light
- Steel belted radial tires
- Electric rear window defogger
- Side window defoggers
- Unlocked, safety-catch body construction
- Kick-down gear for rapid merging/laning ability (automatic transmission)
- Steering column mounted wiper/washer controls
- Headlight flasher with driver switch or turn signal
- Four-way hazard warning lights
- Collapsible steering column
- Two-speed non-glass windshield wipers
- Floor-mounted hand brake
- Childproof locks on rear doors (4-door models)
- Inertia-ride front seat belts
- Negative steering roll radius
- Lockable glove compartment
- Steering column lock
- Inside hood release
- Illuminated cigarette lighter, ashtray and coin storage
- Protective side door beams
- Energy absorbing aluminium bumpers

COMFORT/CONVENIENCE

- Four mounted four-speed manual transmission (three-speed automatic (on Diesel) and five-speed manual optional)
- Rack and pinion steering
- Independent MacPherson strut front suspension, coil springs
- Independent stabilizer rear axle with coil springs
- Fully reclining ergonomically designed front bucket seats with integrated headrests (adjustable headrests with optional leatherette seat trim)
- Three-speed high output heater/heat air blower
- 87% interior space utilization for passengers and luggage
- Adjustable ventilation controls
- Door operated light switch on both sides
- Wide opening rear cargo door
- Outside mirror, left
- Day/night inside rear view mirror
- Folded adjustable sunvisor
- Carpeted swing-up rear compartment lid
- Folding rear seat
- Door arm rests
- Coat hooks
- Trip odometer
- Tachometer
- Tinted glass all-around

DECOR/TRIM

- Colour coordinated interiors
- Wall-to-wall carpeting (12 oz.)
- Nylon cloth seats
- Bright hubcaps
- Rocker mouldings, black
- Rabbit L nameplate

RABBIT LS

Standard features and equipment at no extra charge

(Different from or in addition to Rabbit L equipment)

EXTERIOR

- Halogen headlamps
- Bumper guards and impact strips, front and rear
- Front vent windows
- Deluxe exterior trim
- Black wheel opening flares
- Full wheel covers with bright rim ring
- Rabbit LS nameplate

INTERIOR

- Padded front bar on steering wheel
- Three-speed non-glass windshield wipers with intermittent wiper setting
- Alloys, rear
- Automatic seat belts (passive restraint system)
- Fully reclining ergonomically designed front bucket seats with adjustable headrests
- Outside mirrors (left and right, adjustable from the inside)
- Sun's visor in passenger sunvisor
- Luggage compartment light
- Front door armrests with integrated pull handle
- Wall-to-wall carpeting (18 oz.) with carpeted lower door panels
- Woodgrain tactile dash
- Fully carpeted luggage compartment, including floor covering
- Glove compartment light

RABBIT S

Standard features and equipment at no extra charge

(Different from or in addition to Rabbit L equipment)

EXTERIOR

- Black protective body side mouldings with red pin stripe accent
- Red vinyl accent stripe on hatch door
- Black grille with red accent striping around emblem and black centre logo
- Black aluminium bumpers
- Bumper guards and impact strips, front and rear
- Black door handles
- Black wheel opening flares
- Black front spoiler
- Rear window wiper/washer
- Outside mirrors (left and right, adjustable from the inside)
- Halogen headlamps
- Argent 51 x 13 steel wheels, tire caps, bright alloy hub caps and centre cover
- 175/70 R13 85W steel belted radial tires
- Bright window moulding deleted
- Rabbit S nameplate

INTERIOR

- Five-speed manual transmission
- Sport seat trim in vinyl
- Soft arm rests with integrated pull handle on front doors

- Special door trim design, including:
 - map pockets
 - bright door and window handles
 - full height door panel - all vinyl
- Centre console and special instrumentation:
 - clock, voltmeter and oil temperature gauge in centre console
 - instrument cluster panel, black with red accent -tachometer in instrument panel
- Sport steering wheel, colour keyed
- Instrument windshield wipers
- Vanity mirror in passenger sunvisor
- Floor covering -colour coordinated carpet
- Fully carpeted luggage compartment
- Additional sound insulation
- Glove compartment light
- Luggage compartment light

RABBIT CONVERTIBLE

Standard features and equipment at no extra charge

(Different from or in addition to Rabbit L equipment)

EXTERIOR

- Convertible top with integrated roll bar
- Different grille design with circular headlamps
- Lockable gas cap
- Dual tone fairs
- Truck lid
- 175/70 SR 13 steel belted radial tires with white side walls
- Metallic paint
- Rear wheel stone guard
- 51 x 12 rim
- Chrome trim rings with hubcaps
- Chrome bumpers instead of aluminium bumpers
- Removable antenna instead of fixed mast antenna
- Bumper guards deleted
- Rear luggage moulding, bright strip roll moulding and black wheel opening flares deleted
- Rabbit nameplate

INTERIOR

- Five-speed transmission
- AM/FM Sound System (stereo, cassette)
- Sports steering wheel
- Tachometer
- Centre console including:
 - radio to electric clock
 - voltmeter
 - oil temperature gauge

- Alloy wheels (31 x 13) (standard on Convertible and S)
 - Sport seats (Convertible only)
 - Heavy duty radiator (with Diesel engine option only)
- #### OPTION PACKAGES
- VALUE PACKAGE (ONLY FOR L)**
- Includes:
- Vanity mirror
 - Rear window
 - Instrument windshield wiper setting
 - Fully carpeted luggage compartment
 - Remote control outside mirrors, left and right
 - Front seat windows
 - Additional sound insulation
 - Bright wheel trim rings
- AIR CONDITIONING PACKAGE (ONLY FOR DIESEL)**
- Includes:
- Air conditioner
 - Heavy duty radiator
- SPECIAL INSTRUMENTATION PACKAGE (ONLY FOR L AND LS, N.A., WITH DIESEL)**
- Includes:
- Centre console, with:
 - clock
 - voltmeter
 - oil temperature gauge
 - Tachometer
 - Woodgrain tactile dash (L only)

OPTIONS THAT MAKE THE ORIGINAL UNIQUELY YOURS.

- The following are individual popular Rabbit factory installed options and "option packages":
- Remote restraint system (standard LS, optional S)
 - AM/FM pushbutton radio (L, LS and S)
 - AM/FM stereo pushbutton radio (L, LS and S)
 - AM/FM stereo pushbutton radio with cassette player (L, LS and S)
 - Dual rear speakers (L, LS and S)
 - Radio prep package (L, LS and S)
 - Deluxe AM/FM Sound System (stereo, cassette with digital wahon and time read-out) (Convertible)
 - Diesel engine (1.6 liter) (N.A., with automatic transmission (L and LS))
 - Tires, 175 85W (L and LS only)
 - Tires, 175 85W (L and LS only) (standard on Convertible)
 - Rear window wiper and washer (L and LS)
 - 5 speed manual transmission (standard on Convertible and S)
 - Sunroof, steel, with wind deflector (L, LS and S)
 - Air conditioning (all models)
 - Power steering (L, LS and S)
 - Floor mats, front and rear (L and S)
 - Engine block heater (L, LS and S)
 - Light alloy wheels (31 x 13) (all models)

Rabbit Colours

Colours shown here are as accurate as modern, high speed printing permits. Please ask your Volkswagen dealer to show you paint and trim samples.

(Extra charge) *Rabbit S colour selection



Rabbit Convertible Colours



For exterior-interior colour combinations, please ask your Volkswagen Dealer for details.

1982 Rabbit Specifications

ENGINE	Type	Water-cooled, transverse front mounted
No. of cylinders	Four in line, single overhead cam	
Bore and stroke (gasoline)	79.5 mm x 86.4 mm/3.13 in. x 3.40 in.	
(diesel)	76.5 mm x 86.4 mm/3.01 in. x 3.40 in.	
Displacement (gasoline)	1.7 L/105.0 cu. in.	
(diesel)	1.6 L/97.0 cu. in.	
SAE net HP @ rpm (gasoline)	76 HP @ 5,000 rpm	
(diesel)	52 HP @ 4,800 rpm	
SAE net torque (gasoline)	91.3 ft. lbs. @ 3,000 r.p.m.	
(diesel)	71.5 ft. lbs. @ 3,000 rpm	
Compression ratio (gasoline)	8.2:1	
(diesel)	23.0:1	
Fuel system (gasoline)	CIS fuel injection	
(diesel)	Mechanical diesel injection pump	
Fuel requirement (gasoline)	Regular	
(diesel)	Diesel fuel No. 2	
Fuel capacity	37.9 L/8.3 imp. gal.	
Oil capacity	4.4 L/3.9 imp. qts.	
Battery	12 V/63 Amp/h	
Alternator	65 Amp.	
Type of ignition (gasoline)	Electronic (breakerless)	
(diesel)	Compression ignition	

DRIVE TRAIN	Type	Front-wheel drive with two constant velocity joints per drive shaft
Clutch	Dry, single plate	
Manual Transmissions	Fully synchronized four-speed or optional five-speed (standard on Convertible and Rabbit S)	
Automatic Transmission	Three-speed automatic transmission with torque converter (N.A. on Diesel or Rabbit S)	
Gear ratios	{4-speed manual} 3.45/1.75/1.06/0.70/R 3.17 {5-speed manual} 3.45/1.94/1.29/0.91/0.71/R 3.17 {automatic} 2.55/1.45/1.00/R 2.46	
Final drive	{manual} four-speed 4.17; five-speed 3.89 {automatic} 3.57	

CHASSIS	Body	Aerodynamic, all steel unitized, bolt-on front fenders, passenger compartment designed as safety cell, front and rear designed to absorb impact energy (Rabbit Convertible with integrated roll bar)
Front suspension	Independent MacPherson struts, negative steering roll radius, coil springs	
Rear suspension	Independent stabilizer axle with coil springs mounted on shock absorber struts	
Braking system	Hydraulic, power-assisted and pressure regulated, dual diagonal brake circuits with self-adjusting disc brakes at front and self-adjusting drum brakes at rear	
Parking brake	Mechanical, effective on rear wheels	
Rim size	4 1/2 J x 13; 5 J x 13 Convertible and S	
Tire type/size	Tubeless radial ply steel belted; 155/80 R13 BSW; 175 SR 13 WSW on Convertible; 175 R 13 BSW on S	
Steering system	Rack and pinion steering with energy absorbing steering wheel and column, plus maintenance-free tie rods	
Turning circle	9.5 m., 31.2 ft. (curb to curb) Convertible; 10.3 m., 33.8 ft. (curb to curb)	

DIMENSIONS	Wheelbase	240.0 cm., 94.5 in.
{2-Door L}	Front track	138.5 cm., 54.5 in.
	Rear track	135.9 cm., 53.5 in.
	Length	394.5 cm., 155.3 in.
	Width	161.0 cm., 63.4 in.
	Height	135.2 cm., 53.2 in.
	Ground clearance	11.7 cm., 4.6 in.

FUEL CONSUMPTION* AND PERFORMANCE (2-door)

	4-Speed		Automatic Gasoline	4-Speed		Convertible	
	Manual Gasoline	Manual Gasoline		Manual Diesel	Manual Diesel	5-Speed Manual Gasoline	Convertible Automatic Gasoline
Rating L/100 km	6.9	7.0	8.1	4.3	4.9	7.3	8.4
Urban L/100 km	9.0	9.3	10.0	5.3	6.2	9.7	10.5
Highway L/100 km	5.3	5.4	6.9	3.6	3.9	5.5	7.1
Top Speed (km/h)	152	152	152	136	136	155	150
Acceleration 0-80 km/h (sec.)	8.6	8.6	10.0	11.4	11.4	9.0	10.2

*Estimates, based on laboratory tests using approved Transport Canada test methods. Your fuel consumption will vary depending on how and where you drive, optional equipment and condition of your car. However, these estimates do provide a fuel consumption guide for comparison purposes.

Certain items illustrated or mentioned are optional at extra cost.

Volkswagen Canada Inc. believes the specifications in this brochure to be correct at time of printing. However, specifications are subject to change without notice.

