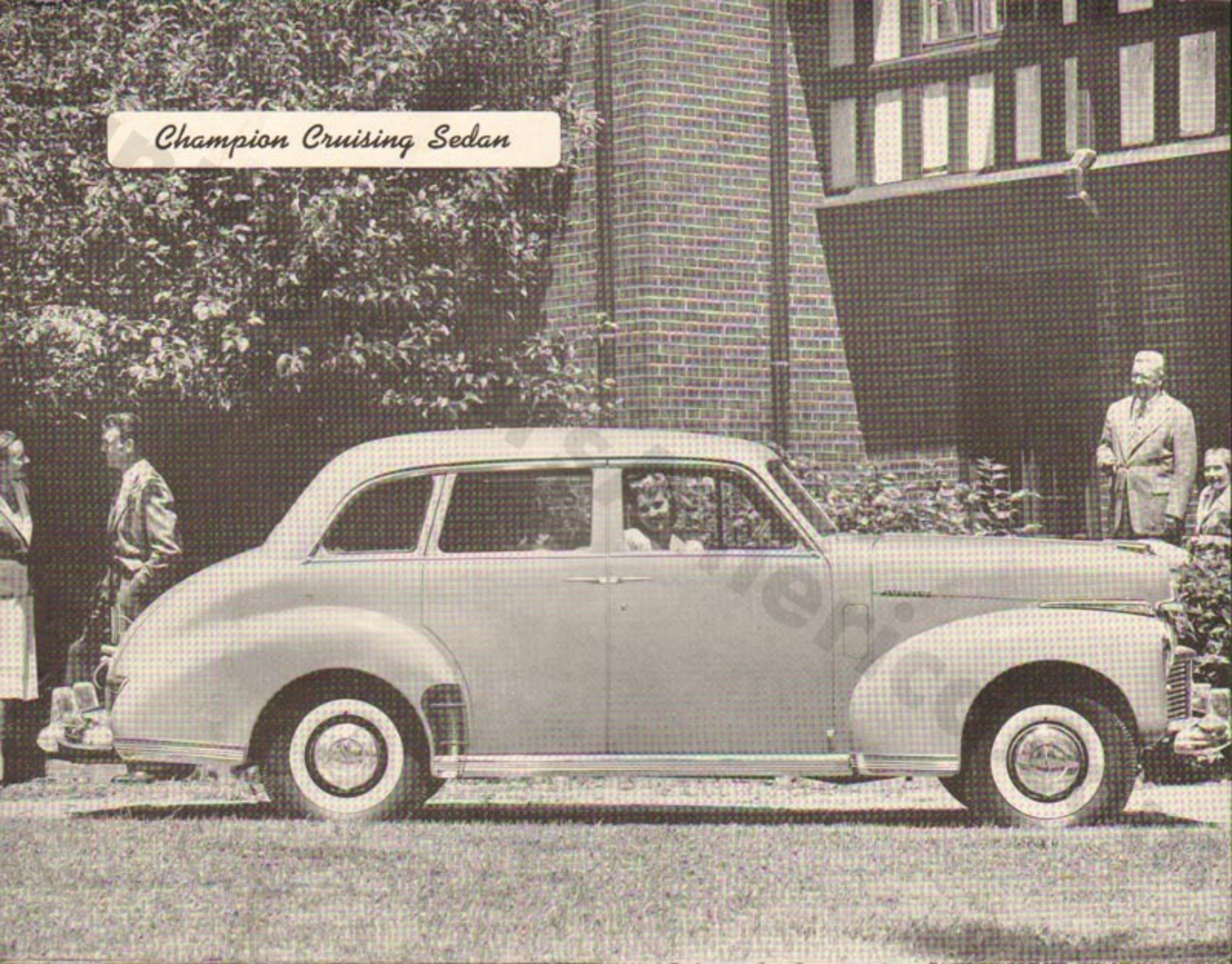


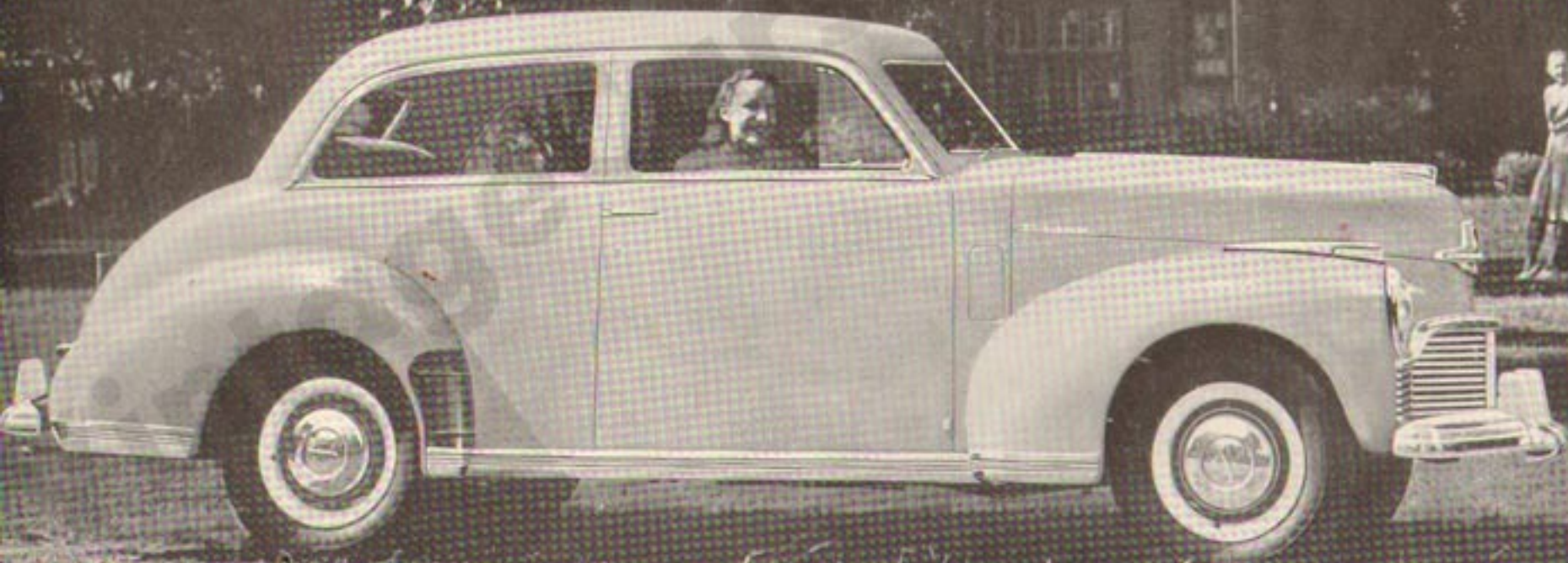
THE
New Skyway
STUDEBAKER
CHAMPION



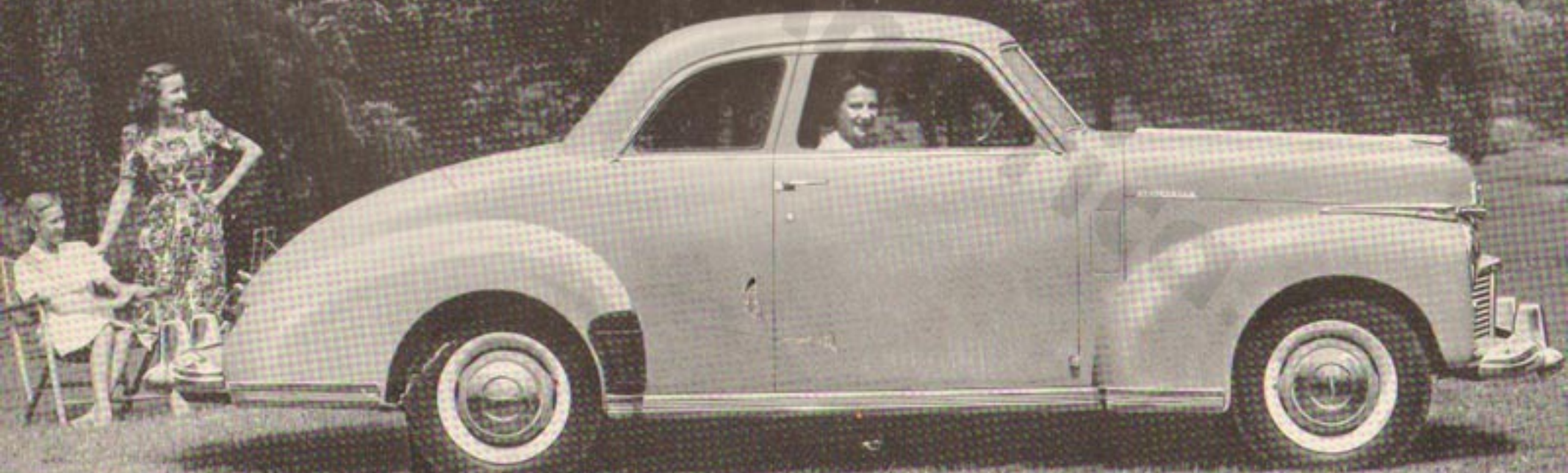
Champion Cruising Sedan



Champion Club Sedan



Champion Coupe—3 or 5 Pass.





Luxurious Appointments and Distinctive Instrument Panels

New Skyway Style Studebaker Champion

Distinctly new in appearance, the Skyway Style Studebaker Champion comes in *four* body types — Cruising Sedan, Club Sedan and Three- or Five-Passenger Coupe.

The features which are found in the new Skyway Champion, all of which helped give the prewar Champion one of the fastest growing owner groups in automobile history, are:

Acknowledged leadership in economy — particularly gas and tires.

The only low-priced car on which overdrive is available — moderate added cost.

Exclusive self-stabilizing planar suspension.

Non-slam rotary door latches.

Extensive use of vibration-absorbing live rubber mountings.

Studebaker's exclusive Climatizer fresh-air ventilating and heating system — available at moderate added cost.

Clashless transmission with synchronized shift.

Floating oil screen, circulates only the cleanest oil — oiling system engineered for filter installation as an accessory.

The prompt swerveless stopping of foot-regulated hydraulic brakes.

Hill holder available at small extra cost.

The luxury appointments that are standard equipment include: two sun visors, two windshield wipers, twin horns, two front door arm rests, two tail lamps — deluxe steering wheel and horn ring — massive new bumper guards. Direction indicators including fender lamps, or fender lamps only, stainless steel wheel trim rings and gravel guards on rear fenders are special equipment at extra cost.



STUDEBAKER'S EXCLUSIVE CLIMATIZER HEATING AND VENTILATING SYSTEM

The new Skyway Champion is engineered for the installation of the Climatizer — Studebaker's exclusive fresh-air heating and ventilating system. With this unique equipment you can make your own weather. The Climatizer costs just about as much extra as the first-class old-fashioned heater, but contributes far more to your comfort.

Built-in beneath the front seat, the Climatizer is a complete heating system that circulates fresh, filtered, thoroughly warmed air to every part of the car interior. You can use it to ventilate the car with filtered fresh air during rain or dust storms in warm weather.

FUEL AND OIL ECONOMY

When you drive the new Skyway Champion you will find that it's a long way between fuel stops. Oil consumption is very low and tire mileage is high. Before the war, a survey of automobile fleet operations ranked the Studebaker Champion first in operating economy among the leading lowest price cars. According to the official recommendations of the tire manufacturers, the prewar

Champion ratio of tire size to car weight rated it to carry more "pay-load" than any other car in its price class.

The automatic choke continues as an added protection of the Champion's gasoline supply which not only prevents waste of fuel from overchoking, but makes cold weather starting easier.



SUPREME MANEUVERABILITY

The new Studebaker Skyway Champion is equipped with twin-lever steering gear with variable ratio which enables you to turn the front wheels much more easily and quickly when maneuvering into or out of a tight spot. Parking is far simpler with the



Champion — a big advantage, especially for women drivers.

You'll like the Champion's stability on curves. A low center of gravity and Studebaker's exclusive self-stabilizing planar suspension reduce roll, sidesway and side-stepping in rounding curves.

SPECIFICATIONS

ENGINE. 6 cylinders, L-head, Bore 3 inches, Stroke 4 inches. Displacement 170 cubic inches. Brake horsepower 80. Compression ratio 6.5 to 1. Oil capacity 5 quarts. Cooling system capacity 19½ quarts. Gear ratio 4.1 to 1 — (4.56 to 1 with overdrive).

OVERALL DIMENSIONS. Length 197-13/16 inches; width 72-3/4 inches; height 57 inches. Tread widths, front 56-1/4 inches; rear 57 inches. Road clearance, front 7¼ inches; rear 8 inches.

WHEELS. Five steel disc wheels with four tires and tubes; 16x3.50 tires.

The right to change specifications at any time, without notice, is specifically reserved, including, of course, those relating to decorative features or details.