



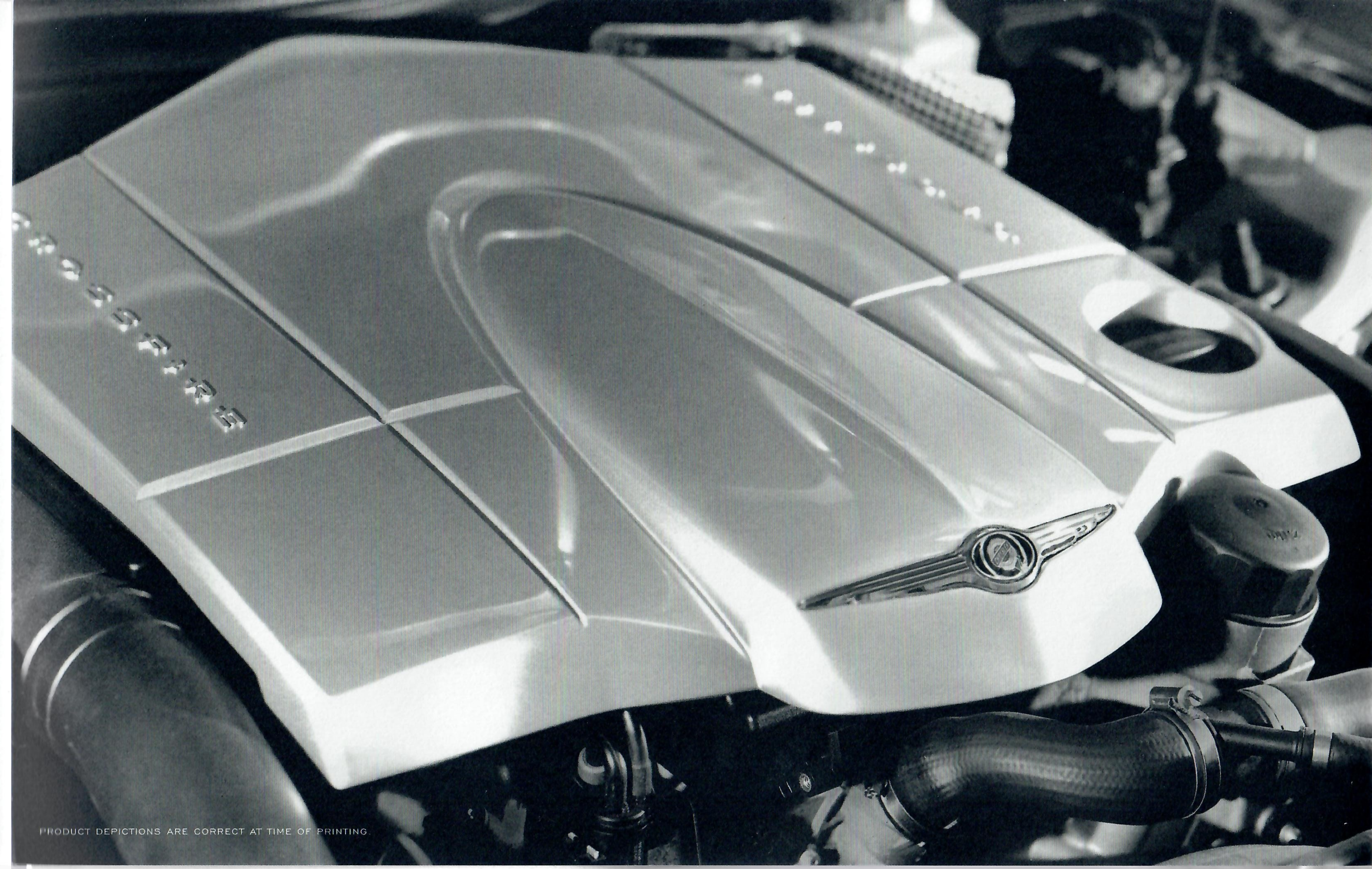
CHRYSLER CROSSFIRE

DRIVE & LOVE



THE CHRYSLER CROSSFIRE

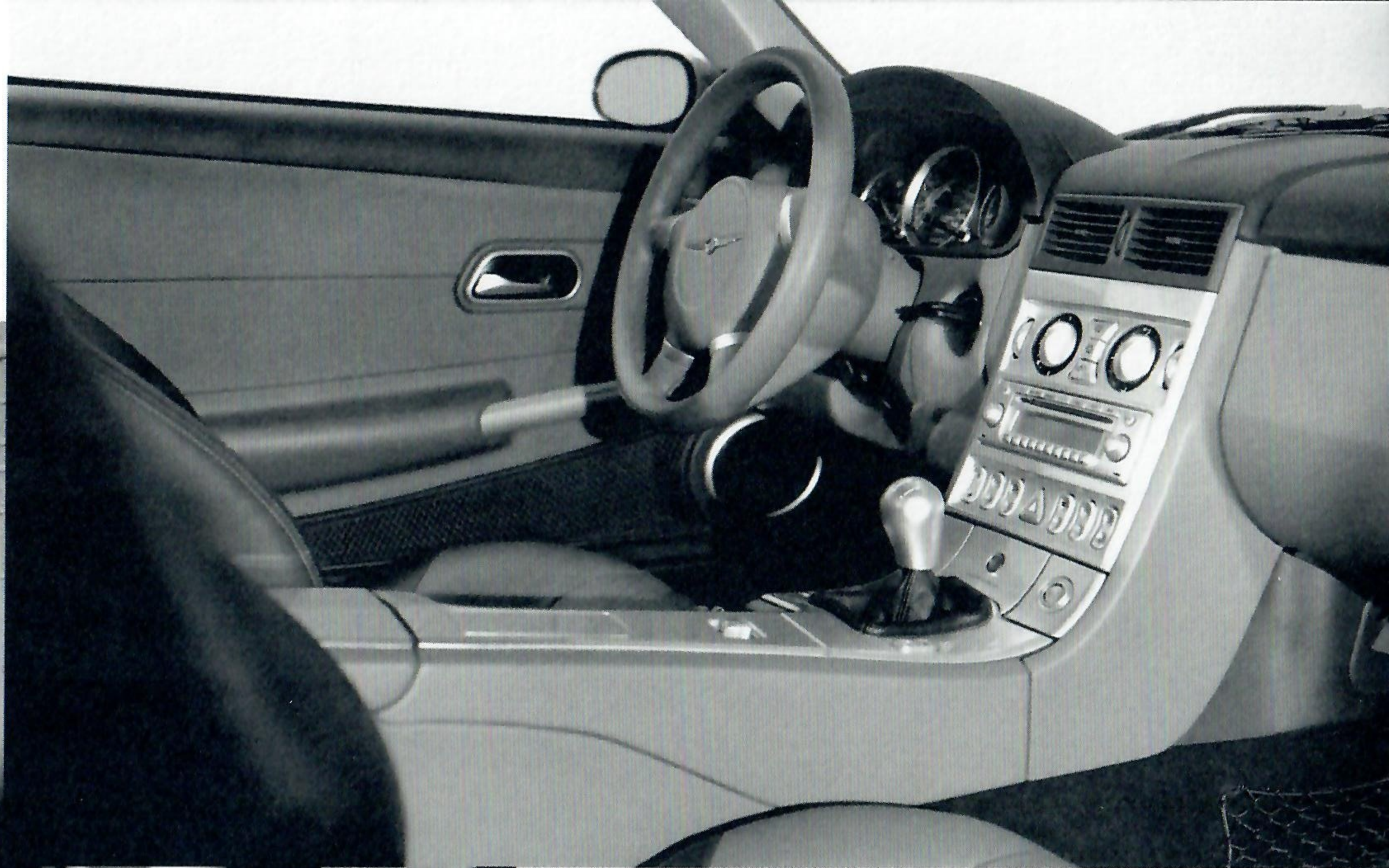
50% AMERICAN IMAGINATION. 50% GERMAN PRECISION. 100% PASSION.



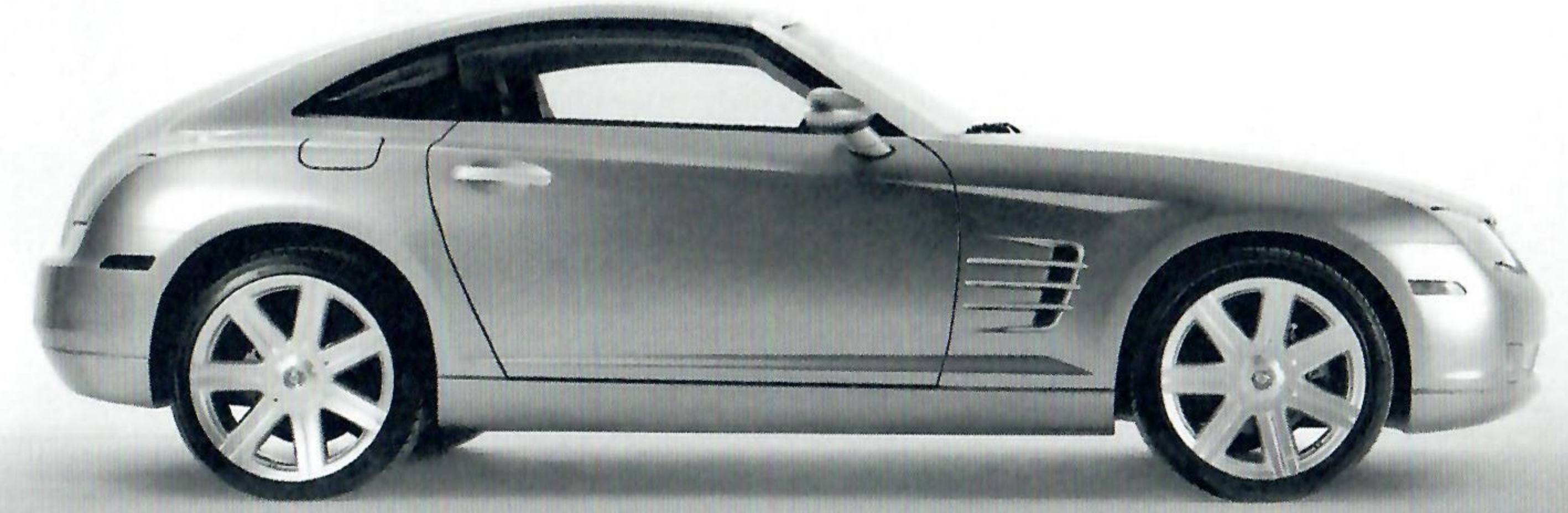
PRODUCT DEPICTIONS ARE CORRECT AT TIME OF PRINTING.



ARRIVING SUMMER 2003



REAR-WHEEL DRIVE
SIX-SPEED MANUAL TRANSMISSION
3.2L V6 ENGINE
ELECTRONIC STABILITY CONTROL
FIND OUT WHERE DESIRE CAN TAKE YOU



EVERY CHRYSLER PRODUCT CARRIES A 7-YEAR/70,000-MILE
POWERTRAIN LIMITED WARRANTY.

SEE DEALER FOR A COPY OF THIS LIMITED WARRANTY. A DEDUCTIBLE APPLIES.

FOR MORE INFORMATION, VISIT CHRYSLER.COM OR CALL 1-800-CHRYSLER. DRIVE & LOVE

CHRYSLER



The New Site For Car Brochures

DEZO'S GARAGE