

GET TO KNOW



1991

S T O R M



P R I Z M



M E T R O



T R A C K E R

G E O

We invite you to take a moment to get acquainted with the Geo line of vehicles. You may find Geo is just what you're looking for — and more.



◆ GEO STORM

Discover sporty style and performance in Geo Storm. Choose the 2+2 Sport Coupe, GSi Sport Coupe or new Hatchback.

◆ GEO PRIZM

Geo Prizm is the affordable family sedan with advanced technology and world-class value. Choose from sedan or hatchback sedan models.

◆ GEO METRO

Small on the outside, roomy on the inside and inexpensive to run.* Metro is the little Geo that's big on quality and value.

◆ GEO TRACKER

Geo Tracker is the "fun-to-drive-anywhere" machine. Choose Tracker 4x4 or Tracker 4x4 Convertible — or the new lower priced Tracker 2WD Convertible.

*Example: Geo Metro XFi EPA estimated 53 MPG city, 58 MPG highway.

GET TO KNOW GEO



The driver enjoys a sense of precisely balanced control in Geo Storm. Tuned four-wheel independent suspension, all-season steel-belted radial tires and rack-and-pinion steering contribute.



One of the industry's most sophisticated engines powers Geo Prizm. This 1.6 Liter high-performance I-4 engine with dual overhead camshafts and Multi-Port Fuel Injection makes Geo Prizm an outstanding performer.



Geo Metro XFi is one of the most fuel-efficient cars sold in the U.S., with EPA estimated MPG of 53 city, 58 highway. An innovative fuel-injected I-3 engine accomplishes this feat with vigor.

The end of the road is just the beginning of adventure for the Geo Tracker 4x4. High ground clearance and big P205/75R-15 on-/off-road tires add to the possibilities.

It's an increasingly popular pastime. The sales success of Geo shows that simple ideas are often the best. Geo simply offers the variety, style and performance that more people are looking for. The Geo family for 1991 includes:

Geo Storm. This 2+2 sport coupe was an immediate sensation in 1990, thanks to sleek styling, serious performance and an affordable price. Geo Storm is poised to continue its winning ways in 1991 with an expanded model line: 2+2 Sport Coupe, GSi Sport Coupe and new Hatchback Coupe.

Geo Prizm. American families are getting to know a compact sedan with uplevel features and impressive technology. This refined 5-passenger family car has earned many compliments from both consumer publications and automotive enthusiasts.

Geo Metro. This is the car that makes frugality downright fun. The Metro line includes a variety of four-passenger hatchback sedans and coupes, and even a lovable two-seat convertible. A 1.0 Liter engine delivers tremendous fuel economy.*

Geo Tracker. Adventurous types are getting to know Geo Tracker. Four-wheel drive and a tough truck stance are two reasons why. The choice of Tracker or Tracker Convertible is another. A new, highly affordable two-wheel-drive Convertible will make it even easier to be a Tracker owner in '91.

The Geo vehicle family is sold and serviced by Chevrolet/Geo dealers. The Geo sign appears at thousands of familiar locations nationwide.

Geo has also become synonymous with designed-in quality and more-than-expected value. Overhead camshaft, multi-valve engines were once the province of expensive imports. Today, you'll find this technology in every Geo 4-cylinder engine. Other Geo performance features include four-wheel independent suspensions, smooth-shifting 5-speed manual transmissions and driver-oriented analog gage clusters.

Most Geo models include such conveniences as in-dash cup holders and coin holders. **Scotchgard™ Fabric Protector** (on seats and door panels) is standard in every Geo.

Geo models are sold and serviced by most Chevrolet dealers nationwide — one of the largest dealer networks in the world. What's more, GM's 3-Year/50,000-Mile Bumper to Bumper Plus warranty gives every Geo buyer the best small-car warranty General Motors has ever offered.



*Example: Geo Metro XFi EPA estimated 53 MPG city, 58 MPG highway.

Geo
S T O R M

Every era has its hot car. This year, this car is taking America by storm. Geo Storm! People love the way Geo Storm looks. Geo Storm owners love the performance.

In 1991 there will be three kinds of Storms to watch out for: 2+2 Sport Coupe, GSi Sport Coupe and the roomy new Hatchback Coupe.



Geo Storm GSi Sport Coupe.

The Geo Storm line for 1991 includes a 2+2 Sport Coupe, high-performance GSi Sport Coupe and new Hatchback Coupe.

The expressive-style Geo Storm includes flush-mounted glass, low hood line and semi-hidden headlamps.

Geo Storm's MacPherson Strut four-wheel independent suspension with front stabilizer bar is designed to provide an excellent ride.

Geo Storm GSi features a 16-valve 1.6 Liter I-4 engine with dual overhead camshafts for free breathing.

S T O R M

Introducing the full-blown Storm. GSi Sport Coupe carries Storm performance to a level that will please the all-out enthusiast.

GSi Sport Coupe is powered by a 1.6 Liter engine with dual overhead camshafts (DOHC), a four-valve-per-cylinder design and Multi-Port Fuel Injection. A 5-speed manual transmission is standard; a 4-speed electronically controlled automatic is optional.

Other GSi hardware: new P205/50VR-15 tires on 15" cast-alloy road wheels, a Sport Suspension with quick-ratio power steering, front and rear stabilizer bars and gas-filled rear shocks.



Command Storm GSi from a body-contoured sport bucket seat. A driver's-side Supplemental Inflation Restraint system (air bag) is standard on all Geo Storm models.



The Geo Storm GSi control center. Like all Storm models, it has full instrumentation with tachometer, a headlamps-on reminder tone and a remote hatch opener.

Geo Storm GSi Sport Coupe. GSi appearance highlights include a distinctive front fascia/air dam, fog lamps, rocker panel skirts, rear wiper/washer and a large body-color rear spoiler.



S T O R M

Nothing on the road looks quite like the Geo Storm 2+2 Sport Coupe. Maybe that's because nothing else looks quite so right.

Catch a Storm 2+2 Sport Coupe standing still and you'll find a highly affordable sport coupe packed with features. Design highlights include flush-mounted tinted glass, a full-glass rear hatch, pop-up headlamp covers, new full wheel covers and body-color bumpers.

Power rack-and-pinion steering, P185/60HR-14 all-season steel-belted tires and a four-wheel independent suspension system all contribute to Geo Storm's sporty attitude.

The sport-styled interior features high-back reclining front bucket seats, full center console with convenience trays and coin holders. There's rear seating for two, plus a folding seat-back to increase cargo capacity when needed. A rear cargo cover is optional.



Geo Storm 2+2 Sport Coupe is an affordable, high-styled sporty car for the Nineties.

The 2+2 Sport Coupe interior features high-back front bucket seats with a center floor console and convenience trays. The rear seat-back is full-folding.





S T O R M

Geo Storm Hatchback Coupe is new for '91 and combines Storm's sporty attitude with more rear passenger head and shoulder room, and increased cargo space.

Features of the newest Geo Storm include a sport-styled interior with comfortable high-back reclining front bucket seats and a rear seat that readily accommodates two passengers. The Hatchback Coupe also features an easy-entry front passenger seat.

A full-glass rear hatch door provides a convenient cargo area access. Cargo space is a huge 22.4 cu. ft. with the rear seat folded forward. Detachable rear quarter windows are standard.

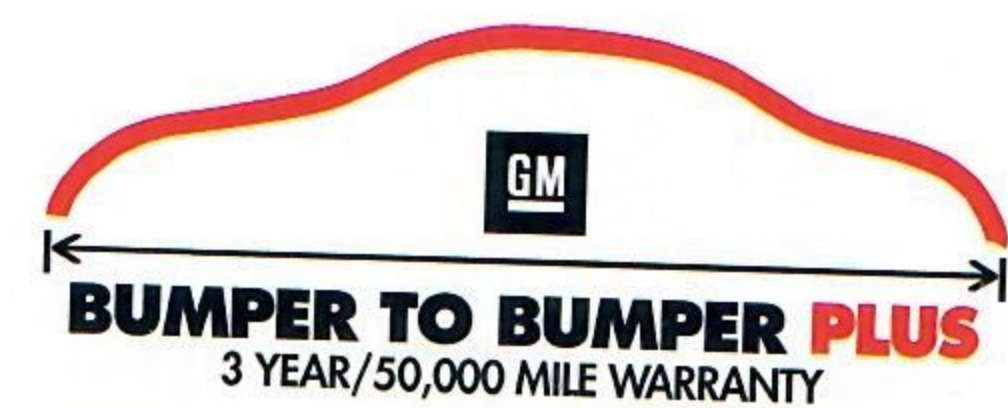
Other interior features include door panels with integral storage bins, a full floor console with convenience trays, coin holders, and an AM/FM stereo with seek-scan and digital clock.



Full-glass hatch door opens wide for easy access and the rear seat-back folds flat to accommodate up to 22.4 cu. ft. of cargo. A rear cargo cover is standard.

The new Hatchback Coupe is the most spacious Geo Storm, with increased rear passenger head and shoulder room and a large cargo area.





GM's best small-car warranty ever covers Geo Storm models. See inside back cover of this brochure for details. And see your Chevrolet/Geo dealer for complete terms of this limited warranty.

GEO STORM 2+2 SPORT COUPE

- 1.6 Liter 12-valve 4-cylinder engine with single overhead camshaft and Multi-Port Fuel Injection
- 5-speed manual transmission with 5th gear overdrive
- 12.4-gallon fuel tank
- 14" full wheel covers
- Analog gage cluster with backlit speedometer, tachometer, trip odometer, fuel gage and temperature gage
- Black-accented exterior trim
- Body-color front and rear bumpers
- Coin holders
- Day/night inside rearview mirror
- Dome lamp with three-position switch
- Door storage bins
- Dual sport mirrors
- Electric rear-window defogger
- Electronically Tuned AM/FM stereo with seek-scan, digital clock and four speakers
- Flush-mounted side glass
- Four-spoke sport-type steering wheel
- Front passenger assist grip handle
- Front stabilizer bar
- Full carpeting, including cargo area
- Full console with convenience trays
- Full-folding rear seat-back
- Headlamps-on reminder tone
- High-back, reclining front bucket seats
- Independent MacPherson Strut front and rear suspension
- Luggage compartment lamp

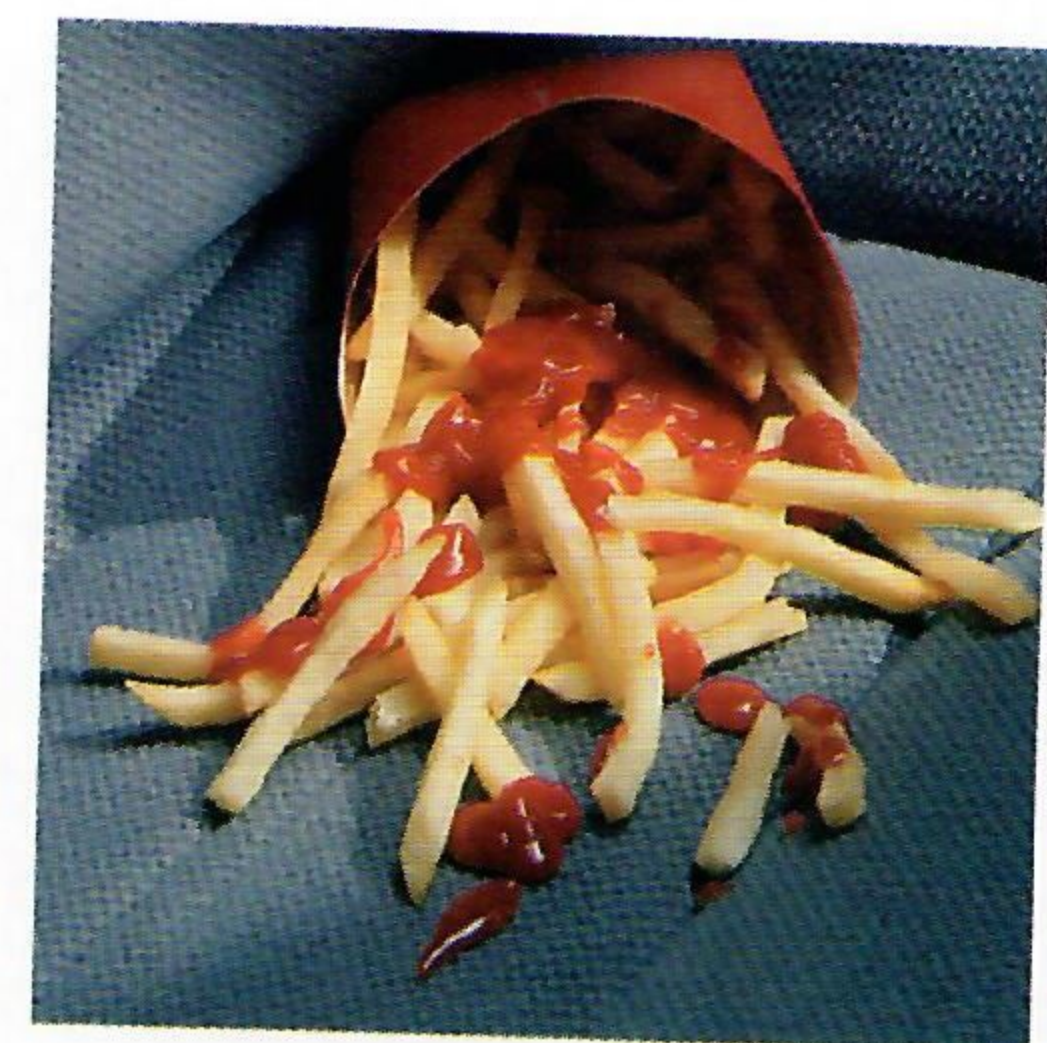
- Maintenance-free battery
- P185/60 R-14 all-season steel-belted radial ply tires
- Passenger-side visor mirror
- Pop-up headlamp covers
- Power front disc/rear drum brakes
- Power rack-and-pinion steering
- Protective body-side moldings
- Quad halogen headlamps
- Recessed door handles
- Remote hatch opener
- **Scotchgard™** Fabric Protector (on seats and door panels)
- Side-window defoggers
- Supplemental Inflatable Restraint system (air bag, drivers-side only, Manual lap/shoulder safety belts, all seating positions.
- Tinted glass.

GEO STORM HATCHBACK

- In addition to or replacing Geo Storm Sport Coupe equipment, every Geo Storm Hatchback offers:
- Detachable rear quarter windows
 - Easy-entry front passenger seat
 - Rear cargo cover
 - Rear passenger assist grips and centrally mounted ashtray.

GEO STORM GSi

- In addition to or replacing Geo Storm Sport Coupe equipment, every Geo Storm GSi Sport Coupe offers:
- 1.6 Liter 16-valve 4-cylinder engine with dual overhead camshafts and Multi-Port Fuel Injection
 - 15" cast-alloy road wheels
 - Body-color rear spoiler
 - Distinctive GSi exterior trim
 - Front air dam with integral fog lamps
 - Intermittent windshield wipers
 - Oil pressure gage and voltmeter
 - P205/50VR-15 steel-belted radial ply tires
 - Rear cargo cover
 - Rear-window wiper/washer
 - Reclining, molded front bucket seats with "see-through" adjustable head restraints
 - Rocker panel skirts
 - Sport Cloth interior trim
 - Sport Suspension with quick-ratio power steering, front and rear stabilizer bars and gas-charged rear shocks
 - Unique aero-style rear fascia.



Scotchgard™ Fabric Protector helps protect seats and door panels from unexpected spills and little messes.

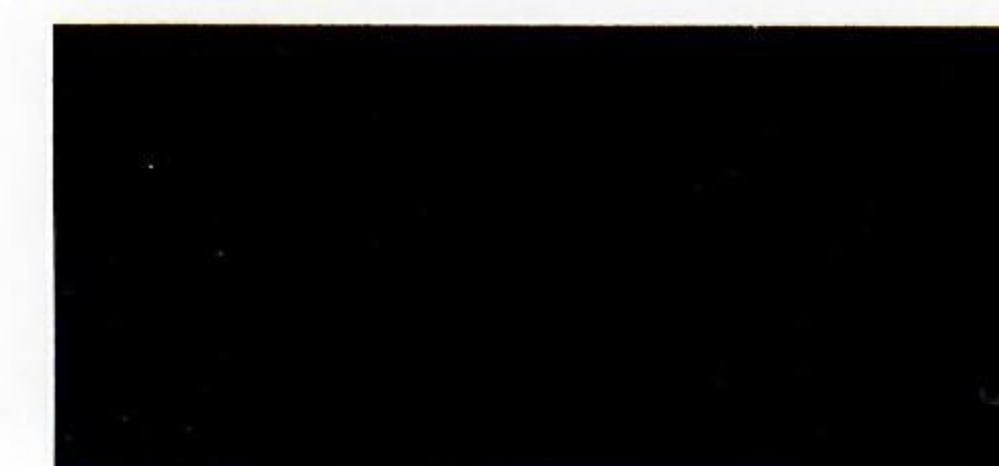
COLOR SELECTOR—ALL MODELS		
Interior Colors	Blue	Gray
Black		
Cobalt Blue Met.		■
Bright Red		■
Silver Met.	■	■
Flash Yellow		■
Turquoise Met.		■
White	■	

	DIMENSIONS (in.)		
	Sport Coupe	GSi Sport Coupe	Hatchback
Wheelbase	96.5	96.5	96.5
Length (overall)	163.4	163.9	163.4
Width (overall)	66.7	66.7	66.7
Height	51.1	51.1	51.7
Head Room—Front/Rear	37.5/31.9	37.5/31.9	37.5/31.9
Shoulder Room—Front/Rear	53.3/51.2	53.3/51.2	53.3/51.2
Hip Room—Front/Rear	50.9/42.7	50.9/42.7	50.9/42.7
Leg Room—Front/Rear	43.8/30.4	43.8/30.4	43.8/30.4
Passenger Capacity	Four	Four	Four
Luggage/Cargo Capacity (cu. ft.)— w/Rear Seat Down	21.8	21.8	22.4
Fuel Tank Capacity (gal.)	12.4	12.4	12.4

Engine	POWER TEAMS				
	Storm 2+2/Hatchback	Storm GSi	Transmissions		
			5-Spd. Manual	3-Spd. Auto	4-Spd. Auto
1.6 Liter SOHC 12-valve L-4 with Multi-Port Fuel Injection	■	NA	■	□	NA
1.6 Liter DOHC 16-valve L-4 with Multi-Port Fuel Injection	NA	■	■	NA	□

■—Standard. □—Optional. NA—Not Available.

EXTERIOR COLORS



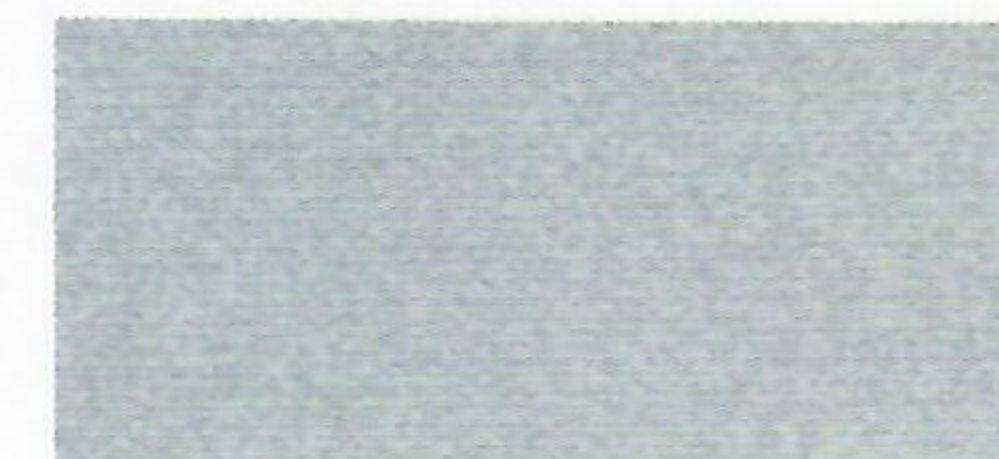
Black



Cobalt Blue Metallic



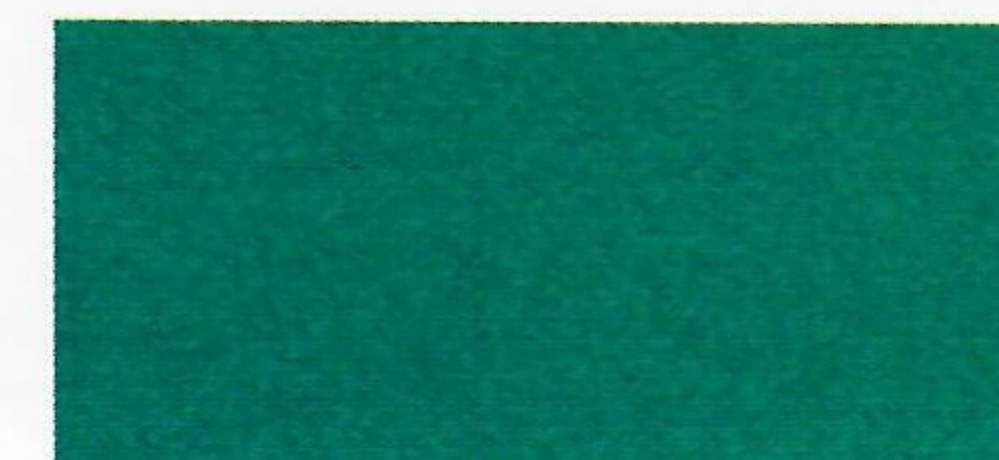
Bright Red



Silver Metallic



Flash Yellow



Turquoise Metallic



White

PREFERRED EQUIPMENT GROUPS:

Geo Storm's high level of standard equipment makes it easy to select a Storm equipped the way you want. Just choose the Preferred Equipment Group 1, which includes the standard 5-speed manual transmission, or Preferred Equipment Group 2, which adds the optional automatic transmission. Then, choose from the following individually available options.

Geo Storm 2+2/Hatchback	1	2
GROUP 1		
Transmission: 5-Speed Manual	■	
GROUP 2		
Transmission: 3-Speed Automatic		■

Geo Storm GSi	1	2
GROUP 1		
Transmission: 5-Speed Manual	■	
GROUP 2		
Transmission: 4-Speed Automatic		■



Multi-valve technology and overhead camshaft design contribute to increased volumetric efficiency in Geo Storm engines. This improved ability to "breathe" provides more power at higher engine RPM while retaining low-range throttle response.

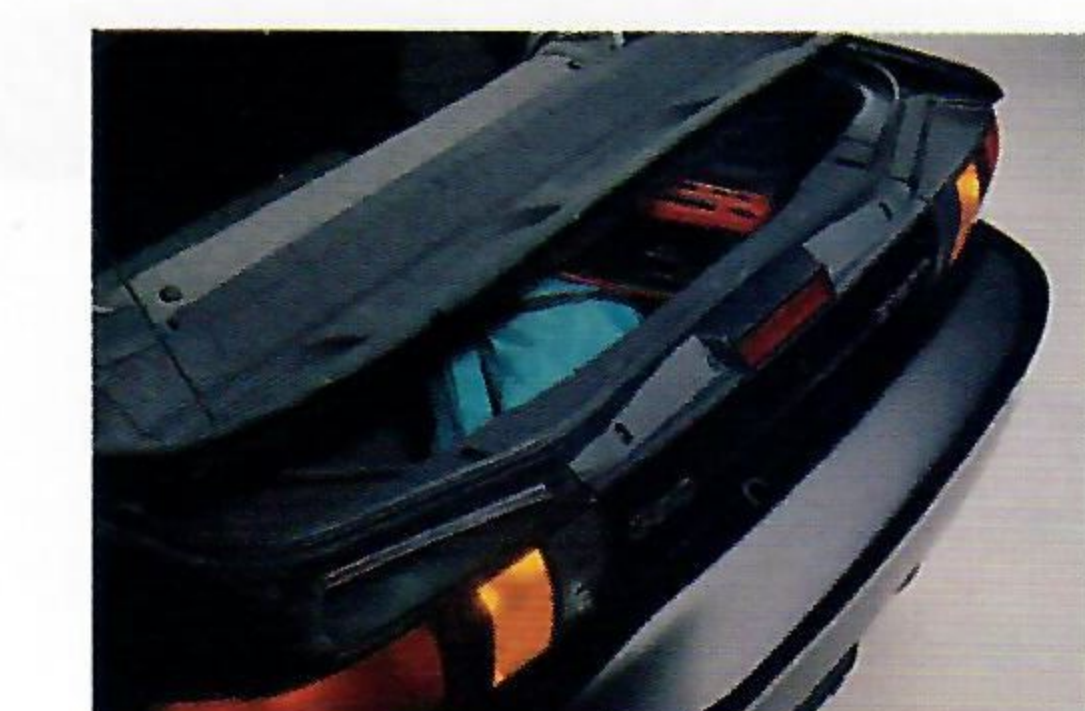
The Geo Storm 2+2 Sport Coupe and Hatchback are powered by a standard 12-valve (three valves per cylinder) 1.6 Liter L-4 with a single overhead camshaft. The Storm GSi's engine, also displacing 1.6 liters, is a 16-valve (four valves per cylinder) L-4 design with dual overhead camshafts. Both of these Geo Storm engines feature Multi-Port Fuel Injection.



Geo Storm interiors feature a console (shown here) with convenience trays and coin holders, in-door storage bins and even an auxiliary 12V power outlet on GSi models. A 5-speed manual transmission with fifth gear overdrive is standard.



Optional 3-speed automatic transmission.



A rear cargo cover is standard on the Geo Storm GSi 2+2 Sport Coupe and is optional for the 2+2 Sport Coupe.

INDIVIDUALLY AVAILABLE OPTIONS

- Air Conditioning
- Front and Rear Floor Mats, Color-Keyed
- Radio Upgrade: Electronically Tuned AM/FM Stereo with Seek-Scan, Stereo Cassette Tape Player, Digital Clock and Four Speakers
- Rear Cargo Cover (Sport Coupe only)
- Rear-Window Shade Louver (Sport Coupe only).



Optional electronically tuned AM/FM stereo with seek-scan, stereo cassette tape player and digital clock.



High-output air conditioning with four adjustable instrument panel outlets, lap cooler outlet and 4-speed blower fan is optional for Geo Storm models. Illuminated controls are highly visible at night.



Headlamp covers contribute to Geo Storm's sleek aerodynamic profile. They pop up on demand, revealing quad halogen headlamps.

G e o

P R I Z M

Geo Prizm is a spacious, refined five-passenger family automobile that has earned many compliments from enthusiast and consumer publications alike. Among the reasons for these excellent reviews: spirited 16-valve engine performance, the interior comfort and an exceptional ride. Geo Prizm Sedan or Geo Prizm Hatchback Sedan... because your family deserves the best.



Every Geo Prizm is powered by a 1.6 Liter 16-valve L-4 engine with dual overhead camshafts (DOHC) and Multi-Port Fuel Injection.

The Geo Prizm driver enjoys the drivability of rack-and-pinion steering and a tuned four-wheel independent suspension. A long-life stainless steel exhaust system is standard.

Although it is very trim outside, there's room for five adults inside Geo Prizm.

Geo Prizm strikes an exceptionally fine balance between luxury and affordability, comfort, compactness and impressive performance.

You can select Geo Prizm Sedan or Hatchback Sedan, the plusher, more expressive LSi Sedan, or the sporty GSi Sedan or GSi Hatchback Sedan. Review your choices on the pages that follow.

Geo Prizm LSi Sedan.

P R I Z M

LSi Sedan is the luxurious Geo Prizm. LSi exterior highlights, shown on these pages, include wraparound body-color front and rear bumpers, dual outside rearview mirrors and custom aero-style full wheel covers.

The technology includes a standard 1.6 Liter L-4 engine with 16 valves, dual overhead camshaft design, and Multi-Port Fuel Injection. For the inside story on LSi, just turn the page.

Body-color wraparound front and rear bumpers and aero-style full wheel covers distinguish the Geo Prizm LSi exterior.



P R I Z M

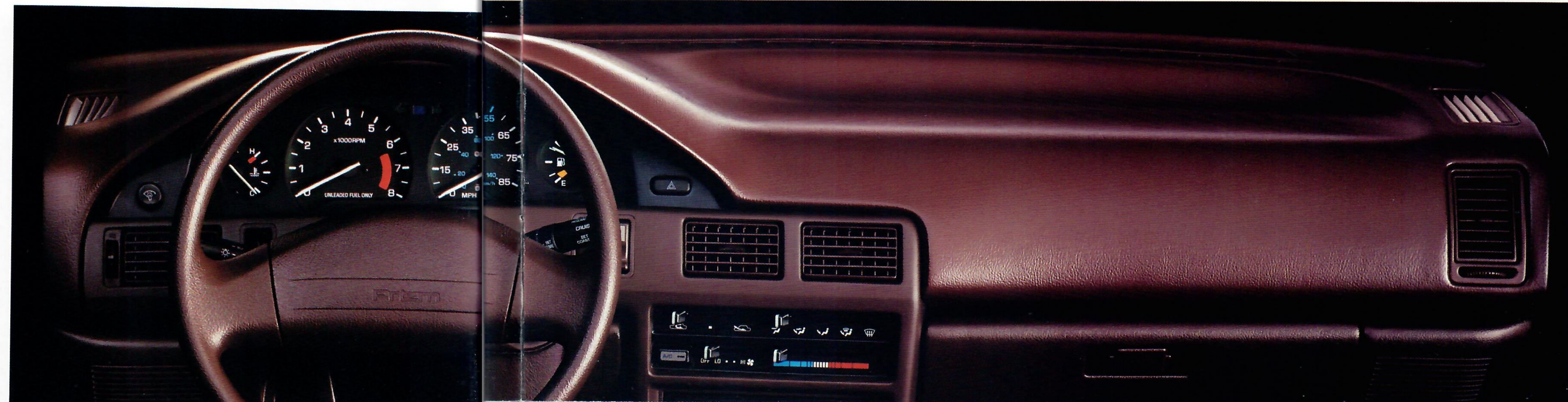
The LSi interior environment emphasizes comfort, refinement and quiet. The custom fabrics and deeply contoured front bucket seats will be of particular interest to luxury lovers. Colors are Blue, Brown, Gray or Maroon, depending on exterior color.

A standard split-folding rear seat with trunk pass-through feature provides additional cargo-carrying flexibility. Other LSi appointments include an electric rear-window defogger, custom "soft-feel" steering wheel, passenger assist grips and covered mirrors on the left- and right-hand visors.



Geo Prizm LSi Sedan duo-tone Custom Cloth interior. A split-folding rear seat is included in the LSi package.

Easy-to-read analog gauges are incorporated into Geo Prizm's instrument panel. Optional AM/FM stereo sound system with cassette tape player shown.



P R I Z M

The standard Geo Prizm lets you select from two body styles. Choose the sporty yet elegant Sedan with conventional trunk—or go for added utility with the Hatchback Sedan. Both carry up to five passengers, and both feature generous glass area for excellent visibility.

Contoured bucket seats, trimmed in cloth and vinyl, provide comfort and durability. For practicality's sake, seat and door panel fabrics are treated with **Scotchgard™ Fabric Protector**. A center console with storage trays and a slide-out cup holder are convenient touches.

Tinted glass is standard. The outside rearview mirror is readily adjustable by remote control—and there's an inside remote release for the fuel filler door.

Underhood, Geo Prizm's sophisticated 16-valve dual overhead camshaft engine provides exceptionally smooth, responsive performance.



Geo Prizm Hatchback Sedan offers increased cargo space and utility with no sacrifice of style.



Contoured, reclining front seats provide excellent comfort.

Geo Prizm Sedan provides five-passenger roominess at an affordable price.



Geo Prizm GSi features an exclusive Sport Cloth interior. The driver's contoured front bucket seat features a vertical height adjuster.



P R I Z M

GSi is the special performance edition of Geo Prizm. Choose from the GSi Sedan or GSi Hatchback Sedan.

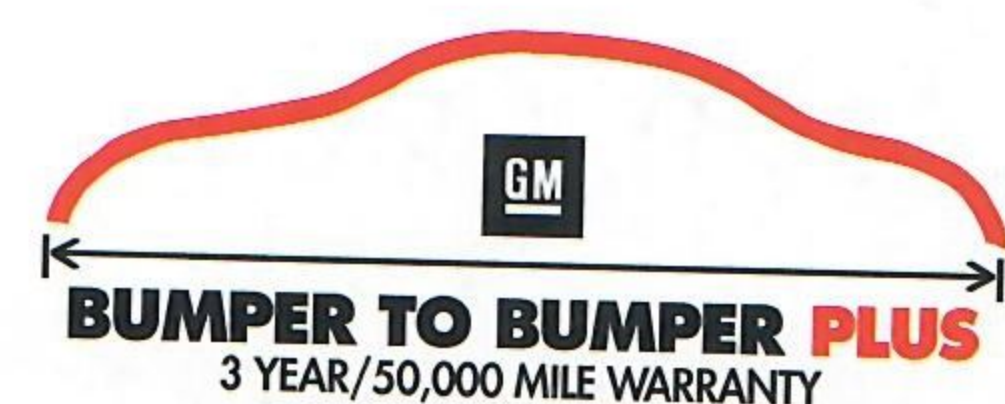
GSi equipment includes a 130-HP high-output dual overhead camshaft version of the 1.6 Liter L-4 engine, a sport-tuned fully independent suspension with front and rear stabilizer bars and P185/60HR-14 Eagle GT tires.

Also standard: power four-wheel disc brakes and rack-and-pinion steering. GSi models offer a choice of a standard 5-speed manual transmission or optional 4-speed electronically controlled automatic with overdrive.

This robust performance package looks the part, too. Exterior features include distinctive body-color front and rear fascias, 14" aluminum wheels, dual mirrors and a rear spoiler.

Geo Prizm GSi is available as a sedan (shown) or as a hatchback sedan. Both feature a high-output dual overhead camshaft engine.





GM's best small-car warranty ever covers Geo Prizm models. See inside back cover of this brochure for details. And see your Chevrolet/Geo dealer for complete terms of this limited warranty.

GEO PRIZM

- 1.6 Liter 16-valve L-4 engine with dual overhead camshaft and Multi-Port Fuel Injection
- 13.2-gallon fuel tank
- 5-speed manual transmission
- Automatic safety belt system for driver and right front passenger. Manual lap/shoulder safety belts, outboard rear seat positions. Manual lap safety belts, center rear seat position
- Black body-side moldings
- Body-color grille
- Cloth and vinyl seat trim
- Composite halogen headlamps
- Day/night inside rearview mirror
- Four-wheel independent suspension
- Front and rear ashtrays
- Full floor carpeting
- Glove box with door and latch
- Headlamps-on reminder tone
- Low-fuel warning lamp
- Low lift-over rear hatch and trunk openings
- Maintenance-free battery
- P155/80R-13 all-season steel-belted radial ply tires
- Power front disc/rear drum brakes
- Reclining front bucket seats
- Remote fuel filler door opener
- **Scotchgard™ Fabric Protector** (on seats and door panels)
- Split-folding rear seat-back (Hatchback only)
- Tinted glass, all windows.

GEO PRIZM LSi

In addition to or replacing standard Geo Prizm equipment, every Geo Prizm LSi offers:

- Blacked-out rocker panels
- Body-color front and rear bumpers
- Bright windows and door moldings
- Custom aero-style full wheel covers
- Custom interior with split-folding rear seat-back
- Custom "soft-feel" steering wheel
- Door storage bins
- Dual covered visor mirrors
- Dual exterior mirrors, left-hand remote
- Electric rear-window defogger
- Passenger assist grips
- P175/70SR-13 all-season steel-belted radial ply tires
- Rear stabilizer bar.

GEO PRIZM GSi

In addition to or replacing standard Geo Prizm or Geo Prizm LSi equipment, every Geo Prizm GSi offers:

- Body-color side moldings with accent stripe
- Electronically tuned AM/FM stereo with seek-scan, digital clock and four speakers
- Full instrumentation with tachometer and oil pressure gage
- P185/60HR-14 Goodyear Eagle GT tires and 14" aluminum wheels
- Rear spoiler
- Specific front and rear fascias
- Specific high-output 1.6 Liter L-4 DOHC engine
- Specific Sport Cloth interior trim with multi-adjustable front bucket seats
- Sport steering wheel
- Sport Suspension with front and rear stabilizer bars
- Four-wheel power disc brakes
- Power steering.

COLOR SELECTOR—ALL MODELS				
Interior Colors	Blue*	Brown**	Gray	Maroon
Black Met.				
Light Blue Met.*	■			
Dark Blue Met.*	■			
Dark Chestnut Met.*†		■		
Medium Gray Met.*			■	
Bright Red				■
Medium Garnet Red Met.*				■
Silver Met.*	■			
White*	■**			

*Not available on GSi models. †Not available on base models. **Base models only.

	DIMENSIONS (in.)	
	Sedan	Hatchback Sedan
Wheelbase	95.7	95.7
Length (overall)	170.7	170.7
Width (overall)	65.2	65.2
Height	52.4	52.4
Head Room—Front/Rear	38.3/36.1	38.3/35.5
Shoulder Room—Front/Rear	53.2/52.7	53.2/52.7
Hip Room—Front/Rear	49.6/52.3	49.6/52.3
Leg Room—Front/Rear	40.9/31.6	40.9/31.6
Passenger Capacity	Five	Five
Luggage/Cargo Capacity (cu. ft.)	12.0	17.2*
Rated Fuel Tank Capacity (gal.)	13.2	13.2

*32.2 with rear seat down.

Engines	POWER TEAMS				
	Geo Prizm/ Prizm LSi	Geo Prizm GSi	Transmissions		
			5-speed Manual	3-speed Auto.	4-speed Auto.
1.6 Liter DOHC Four with Multi-Port Fuel Injection	■	NA	■	□	NA
High-Output 1.6 Liter DOHC Four with Multi-Port Fuel Injection	NA	■	■	NA	□

■ - Standard. □ - Optional. NA - Not Available.

EXTERIOR COLORS



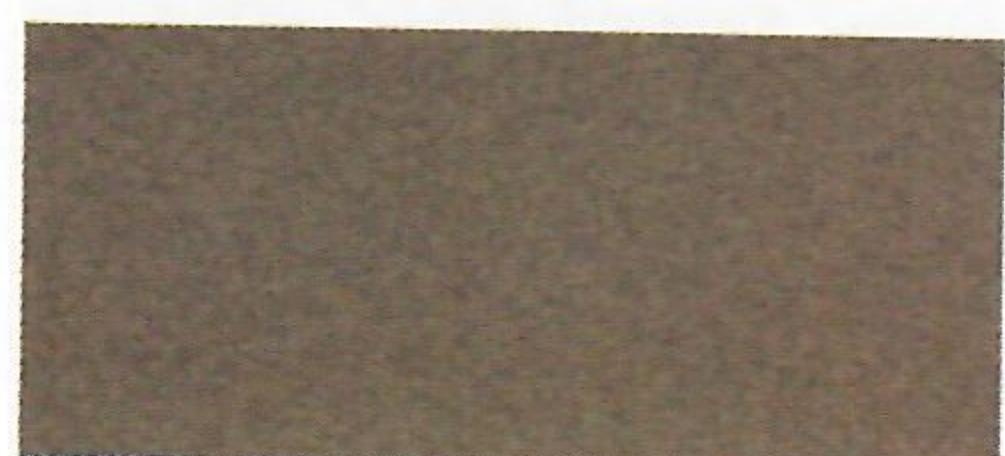
Black Metallic



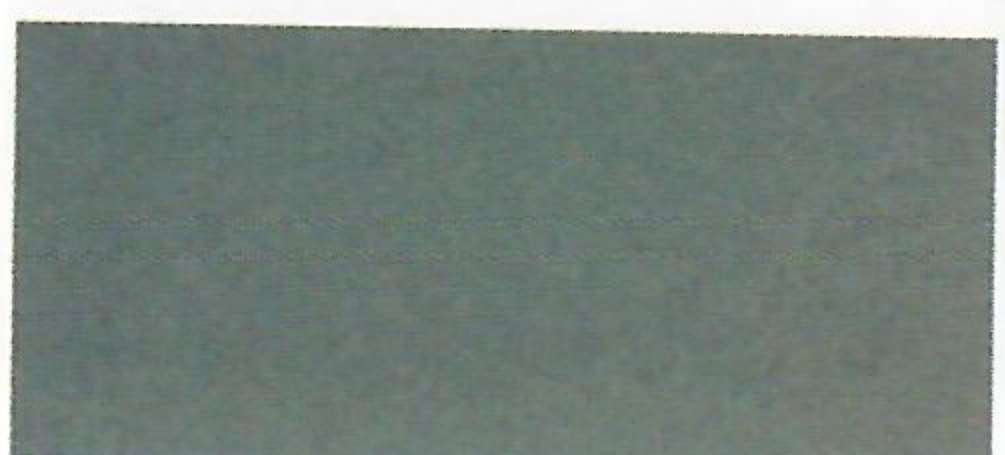
Light Blue Metallic*



Dark Blue Metallic*



Dark Chestnut Metallic* †



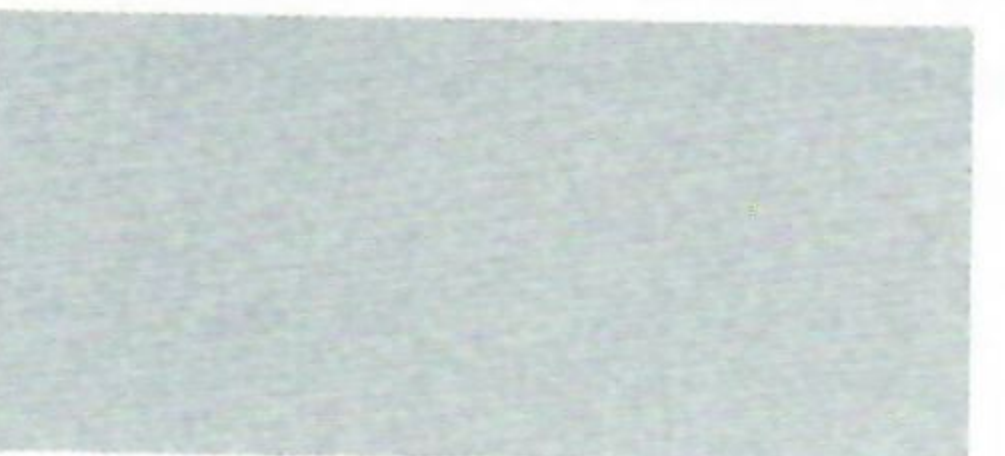
Medium Gray Metallic*



Bright Red



Medium Garnet Red Metallic*

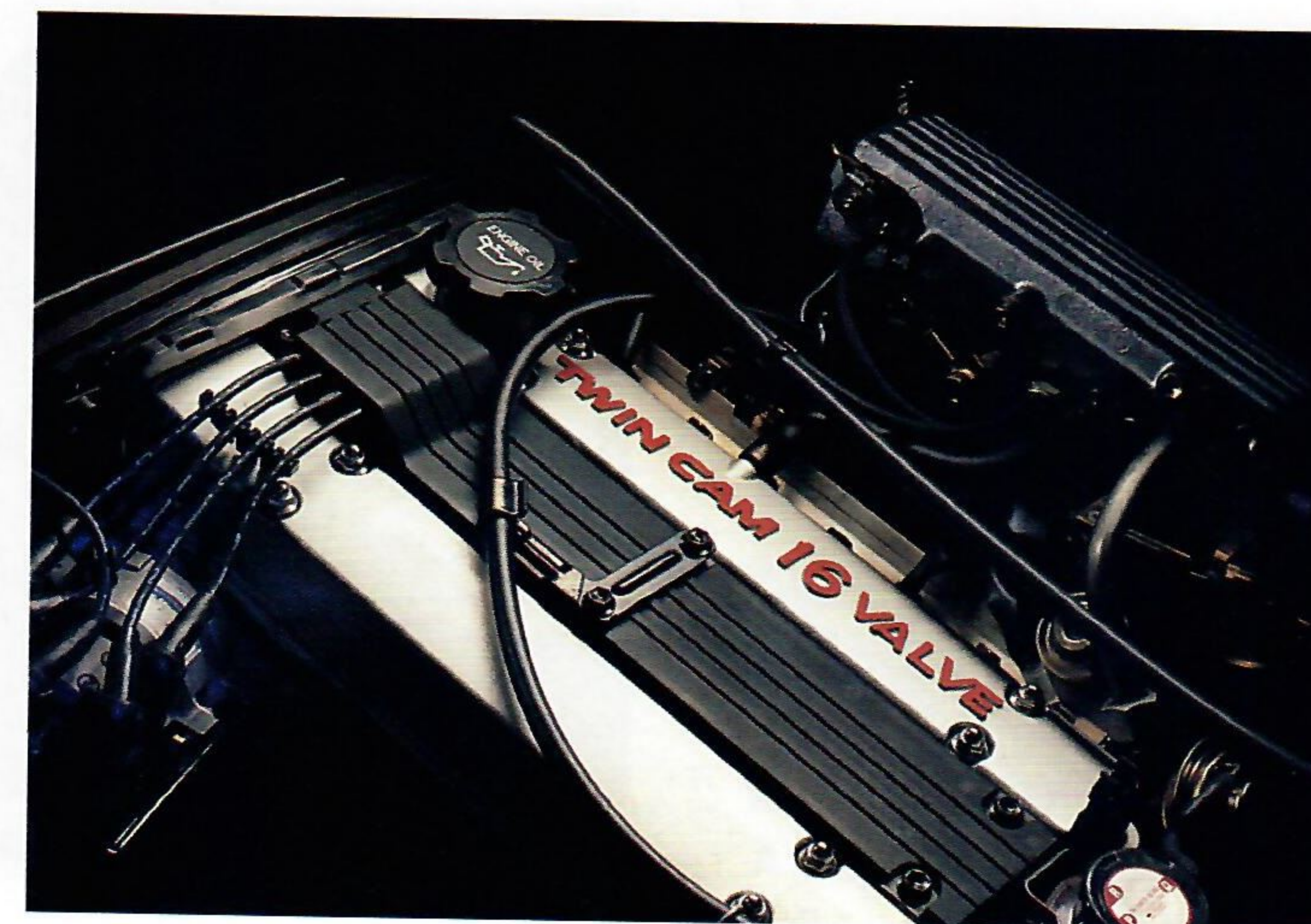


Silver Metallic*

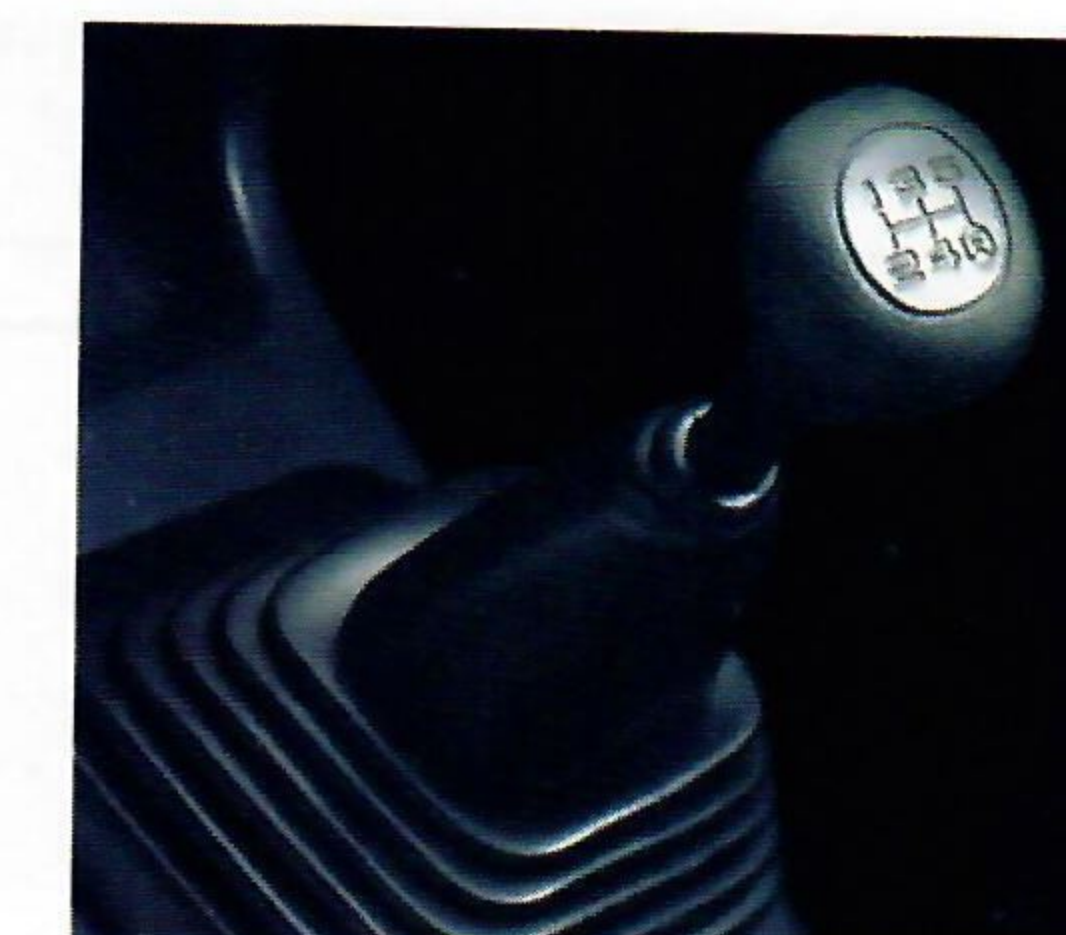
White*

*Not available on GSi. †Not available on base models.

P R I Z M



The engine technology that helps make every Geo Prizm a smooth, powerful performer includes four valves per cylinder (two intake and two exhaust) for improved volumetric efficiency, a dual overhead camshaft design aiding weight reduction and faster valve reaction for improved high-RPM performance, and Multi-Port Fuel Injection for excellent response and drivability. The high-output GSi engine shown above delivers 130 HP.



A 5-speed manual transmission with 4th and 5th gear overdrive is standard with all models.



The Geo Prizm Sedan truck opens at bumper level for easy loading. Luggage capacity is 12.0 cu. ft.



A convenient pull-out cup holder in the center console is standard.



Front door storage bins (all models except base Prizm).



Four-wheel power disc brakes are standard on Geo Prizm GSi models.



Front-wheel drive and all-season steel-belted radial ply tires help to provide excellent traction in the rain or snow. Full wheel covers are standard on Geo Prizm LSi Sedan.



Remote fuel filler door is a standard feature on every Geo Prizm.



Wiper mist-cycle feature controls wiper speed to match weather conditions.

PREFERRED EQUIPMENT GROUPS:

Geo Prizm features Preferred Equipment Groups to help simplify the buying process. The optional groups feature popular combinations of custom features such as Delco AM/FM stereos and air conditioning. Choose the package that suits your requirements, then select individual options from the list that follows.

Geo Prizm Sedan/Hatchback Sedan	1	2	3	4
GROUP 1				
Transmission: 5-Speed Manual	■		■	
P175/70SR-13 Blackwall Steel-Belted Radial Ply Tires and Rear Stabilizer Bars*	■			■
Power Steering	■	■	■	■
Electric Rear-Window Defogger	■	■	■	■
Mirrors: Outside, LH Remote and RH Manual	■	■	■	■
Full Wheel Covers	■	■	■	■
Radio: Electronically Tuned AM/FM Stereo with Seek-Scan and Digital Clock	■	■	■	■
GROUP 2				
Transmission: 3-Speed Automatic		■		
GROUP 3				
Air Conditioning			■	■
Remote Trunk/Hatch Release			■	■
Power Door Lock System			■	■
GROUP 4				
Transmission: 3-Speed Automatic				■
<small>*Standard on Hatchback Sedan.</small>				

Geo Prizm LSi Sedan	1	2	3
GROUP 1			
Transmission: 5-Speed Manual	■		
LSi Equipment Package	■	■	■
Air Conditioning	■	■	■
Power Door Lock System	■	■	■
Power Steering	■	■	■
Radio: Electronically Tuned AM/FM Stereo with Seek-Scan and Digital Clock	■	■	■
Remote Trunk Release	■	■	■
Tilt Steering Wheel	■	■	■
GROUP 2			
Automatic Transmission		■	■
GROUP 3			
Electronic Speed Control with Resume Speed			■
Intermittent Wiper System			■
Power Windows			■

Geo Prizm GSi Sedan/GSi Hatchback Sedan	1	2	3	4
GROUP 1				
Transmission: 5-Speed Manual	■		■	
Air Conditioning	■	■	■	■
Dual Visor Vanity Mirrors	■	■	■	■
Floor Mats, Front/Rear Color-Keyed	■	■	■	■
Remote Trunk/Hatch Release	■	■	■	■
Split-Folding Rear Seat-Back (Standard on Hatchback Sedan)	■	■	■	■
Tilt Steering Wheel	■	■	■	■
GROUP 2				
Transmission: 4-Speed Automatic (Electronically controlled)		■		
GROUP 3				
Electronic Speed Control with Resume Speed			■	■
Intermittent Wiper System			■	■
Power Door Lock System			■	■
Power Windows			■	■
GROUP 4				
Transmission: 4-Speed Automatic (Electronically controlled)				■

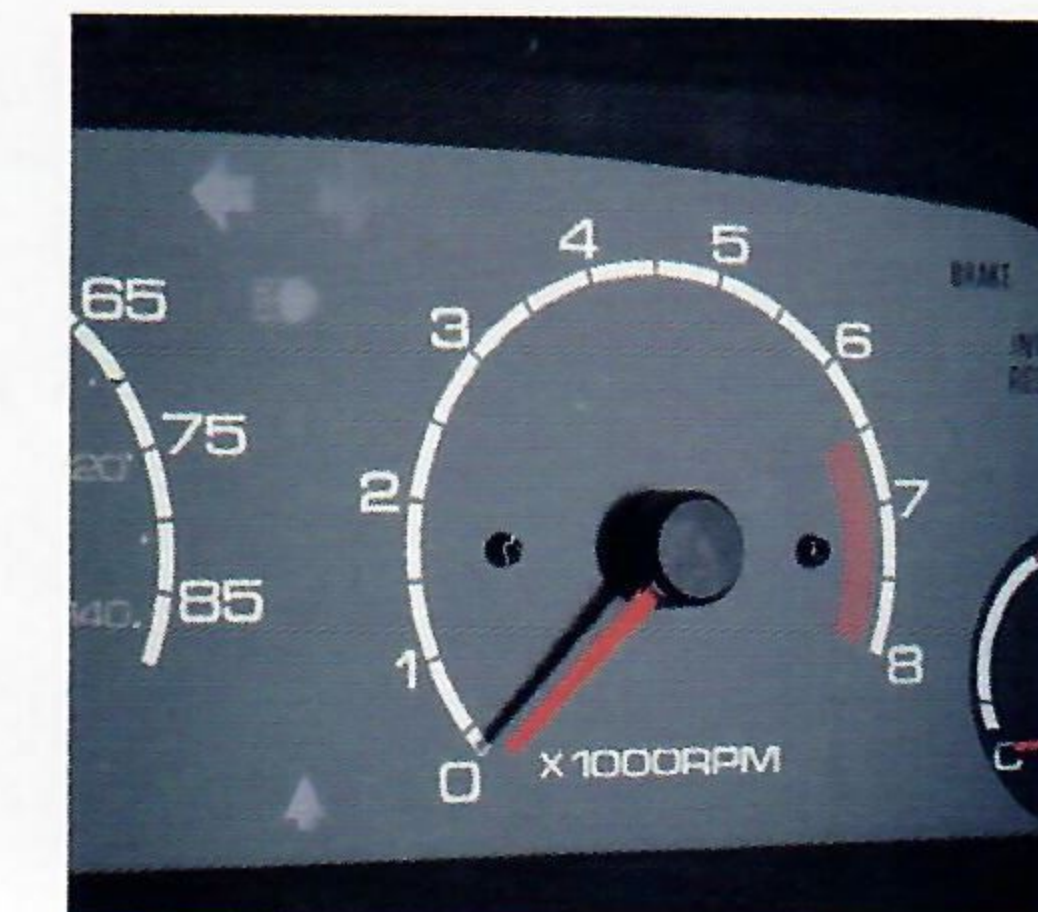
INDIVIDUALLY AVAILABLE OPTIONS

- Air Conditioning
- Defogger, Electric Rear-Window (base Geo Prizm only)
- Electronically tuned AM/FM Stereo with Seek-Scan, Cassette Tape Player and Digital Clock
- Floor Mats, Front/Rear, Color-Keyed
- Sunroof: Electric-Powered, Sliding (includes Map Light)
- Tachometer (LSi only).

P R I Z M



The optional steel sliding sunroof retracts electrically to let the sun shine in when you want it to.



A tachometer is included with GSi models.



Optional electronically tuned AM/FM stereo with seek-scan, stereo cassette tape player with auto-reverse feature and digital clock.



Power door locks are optional on all Geo Prizm models.



A rear wiper/washer is standard on Geo Prizm GSi Hatchback Sedan.



The optional Geo Prizm air conditioning system is designed to provide both powerful cooling and exceptional ventilation/defrosting.



Optional electronic speed control and intermittent wipers add convenience. Controls are stalk-mounted.

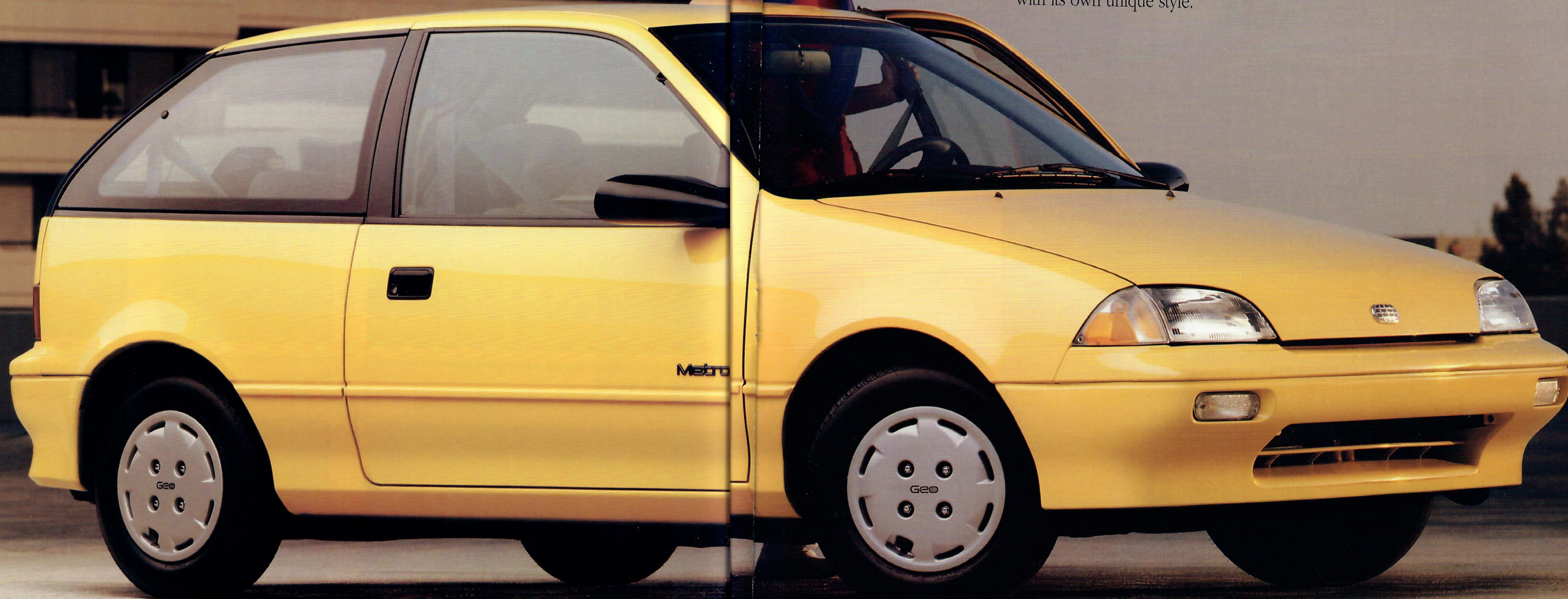


Optional 3-speed automatic transmission. A 4-speed automatic transmission with electronic control is optional on Geo Prizm GSi models.

G e o

M E T R O

Geo Metro makes wonderful sense, with fuel economy that's hard to match and the security of an exceptional GM warranty. What's more, Geo Metro easily fits into parking places...and your budget. It all adds up to a sporty, affordable performer with its own unique style.



Geo Metro offers plenty of variety. Choose the fuel efficient* XFi Hatchback Coupe, high-style mid-level Hatchback Coupe or Hatchback Sedan, or the custom-appointed LSi Hatchback Coupe, LSi Hatchback Sedan or LSi Convertible.

*EPA estimated 53 MPG city, 58 MPG highway.

Small on the outside, but surprisingly roomy inside, Geo Metro carries up to four people, except the Convertible which carries two. All models except the Convertible feature a convenient fold-down rear seat-back and swing-up rear hatch door.

The Geo Metro powertrain is proven by millions of owner-driven miles. GM's 3-Year/50,000-Mile Bumper to Bumper Plus Warranty and 6-year/100,000-mile corrosion protection against body rust-through are standard.*

*See your dealer for terms of this limited warranty.

Parking and maneuvering are a breeze with Geo Metro. Coupe models measure just 146.1 inches overall and have a tight 30.2-ft. turning circle.

Geo Metro LSi Hatchback Coupe.

M E T R O

The well-appointed Geo Metro LSi adds a sporty, luxurious note to the sensible Geo Metro concept. The LSi features body-color bumpers and side moldings, black-accented trim, dual sport mirrors and full wheel covers.

Duo-tone Custom Cloth bucket seats, a center console, cloth door panels, dual door storage bins and a split-folding rear seat-back distinguish the LSi interior.

Choose from the LSi Hatchback Sedan or Hatchback Coupe— or the new two-seat LSi Convertible shown on the next page.



Geo Metro LSi Hatchback Coupe.
The rear hatch door provides convenient access to the cargo area. A load-space security cover is standard equipment.



The inviting LSi interior features duo-tone Custom Cloth bucket seats with center console and cloth door panel trim. Geo Metro seats and door panels feature Scotchgard™ Fabric Protector.



Geo Metro LSi Hatchback Sedan.
Flush-mounted composite halogen headlamps give the LSi a distinctive appearance.



M E T R O

The newest member of the Geo Metro family is one of the most affordable convertibles in the U.S.A., and it brings back a simple idea: the fun-to-drive, easy-to-own, two-seat runabout.

The LSi Convertible includes a sporty interior with duo-tone Custom Cloth bucket seats, dual door storage bins, tachometer, intermittent wipers and a driver's-side Supplemental Inflatable Restraint system (air bag).

This attention-getting Geo Metro also includes an easy-folding manual top with hard tonneau cover, and a spacious trunk with a pass-through feature for added cargo-carrying flexibility.

A 1.0 Liter L-3 engine with Electronic Fuel Injection is standard. Choose from a standard 5-speed manual transmission or optional 3-speed automatic.

The Geo Metro LSi Convertible features Custom Cloth seat trim with contrasting piping. A driver's-side Supplemental Inflatable Restraint system (air bag) is housed within the custom steering wheel. It can help protect the driver in certain frontal collisions. For maximum protection in frontal and all other collisions, all occupants must be properly restrained with safety belts.



Geo Metro LSi Convertible is a sporty two-passenger fun machine. Sport wheel covers and 13" all-season radials are standard.



M E T R O

Geo Metro is a sensible car for reasons that go beyond affordability. It is a highly maneuverable and nimble automobile with front-wheel drive and a 3-cylinder engine that provides excellent performance.

The interior package is space efficient, with surprising roominess for up to four passengers and, with the rear seat folded, considerable cargo space. Both the Geo Metro Coupe and Sedan feature a convenient rear hatch.

Geo Metro value features include: black protective body-side moldings*, full wheel covers*, all-season steel-belted radial ply tires, dual sport mirrors* and intermittent wipers*.

*Not included with Geo Metro XFi Coupe.

Four-door convenience is enhanced in the Geo Metro Sedan with a slightly higher roof line for increased rear-seat head room and a 3.9-inch longer wheelbase than the Coupe.



Geo Metro Hatchback Coupe's aero design is stylish and contemporary.



Attractive and practical, Geo Metro interiors feature Scotchgard™ Fabric Protector on seats and door panel trim.

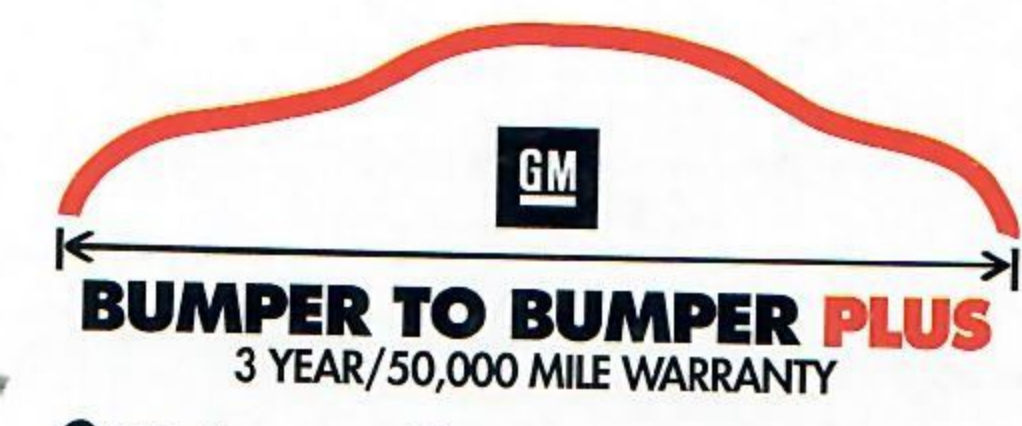


Geo Metro XFi Hatchback Coupe.





M E T R O



GM's best small-car warranty ever covers Geo Metro models. See inside back cover of this brochure for details. And see your Chevrolet/Geo dealer for complete terms of this limited warranty.

GEO METRO XFI

- 1.0 Liter L-3 engine with Electronic Fuel Injection
- 5-speed manual transmission with 5th gear overdrive
- 10.6-gallon fuel tank
- Argent-color styled steel wheels
- Automatic safety belt system for driver and right front passenger (Coupe/Sedan), or Supplemental Inflatable Restraint system, (air bag) driver's-side only, with manual lap/shoulder safety belts for the driver and right front passenger (Convertible). Manual lap/shoulder safety belts, rear seat positions, where applicable
- Black bumpers, front and rear
- Cloth-and-vinyl seat trim
- Color-keyed instrument panel
- Easy-entry passenger seat (Hatchback Coupes)
- Full-folding rear seat-back
- Fully independent suspension
- Headlamps-on reminder tone
- High-back reclining front bucket seats
- Interior lamp with 3-position switch
- Luggage-area and load-floor carpet
- P145/80R-12 all-season steel-belted radial ply tires
- Power front disc/rear drum brakes
- Rack-and-pinion steering
- Rectangular headlamps
- **Scotchgard™** Fabric Protector (on seats and door panels)
- Temperature gage.



Scotchgard™ Fabric Protector protects seat fabrics and door panels in every 1991 Geo Metro.

GEO METRO

In addition to or replacing XFI equipment, every regular Geo Metro includes:

- Black body-side moldings
- Body-color upper portions on front and rear bumpers
- Cigarette lighter
- Dual exterior rearview mirrors, left-hand remote
- Full wheel covers
- Intermittent windshield wipers.

GEO METRO LSi

In addition to or replacing regular Geo Metro features, LSi equipment includes:

- Body-color body-side moldings
- Body-color bumpers
- Composite halogen headlamps
- Console With cup holders
- Custom Cloth seats
- Day/night inside rearview mirror
- Rear cargo security cover *
- Rear-window defogger *
- Remote hatch release *
- Split-folding rear seat-back.*

*Except Convertible.

GEO METRO LSi CONVERTIBLE

The LSi Convertible includes the following features in addition to or replacing LSi Coupe/Sedan features:

- Dual visor vanity mirrors
- Hard tonneau cover
- P165/65R-13 all-season steel-belted radial ply tires
- Sport wheel covers
- Tachometer.



A wide-opening rear hatch and fold-down rear seat-back are standard convenience features on all Geo Metro models except Convertible.

COLOR SELECTOR-ALL MODELS			
Interior Colors	Blue	Gray*	Black**
Exterior Colors			
Aqua Met.*†			
Competition Blue	■		
Medium Quasar Blue Met.*†	■		
Bright Red*		■	
Brilliant Red Met.*†		■	
Silver Met.*†	■		
Yellow (LSi only)			■
White	■		■

*Not available on XFI Coupe. †Not available on Convertible. **Convertible available with Black interior only.

DIMENSIONS (in.)			
	Coupe	Sedan	Conv.
Wheelbase	89.2	93.1	89.2
Length (overall)	146.1	150.0	146.1
Width (overall)	62.7	62.7	62.7
Height (overall)	52.4	53.5	52.4
Head Room—Front/Rear	37.8/36.5	38.8/38.0	39.7
Leg Room—Front/Rear	42.5/29.8	42.5/32.6	42.4
Hip Room—Front/Rear	51.1/42.5	51.1/42.7	51.1
Passenger Capacity	Four	Four	Two
Shoulder Room—Front	51.6	51.6	51.6
Luggage/Cargo Capacity (cu. ft.)	10.2*	10.4†	6.4
Fuel Tank Capacity (gals.)	10.6	10.6	10.6

NA—Not Applicable. *21.8 with rear seat-back down. †23.1 with rear seat-back down.

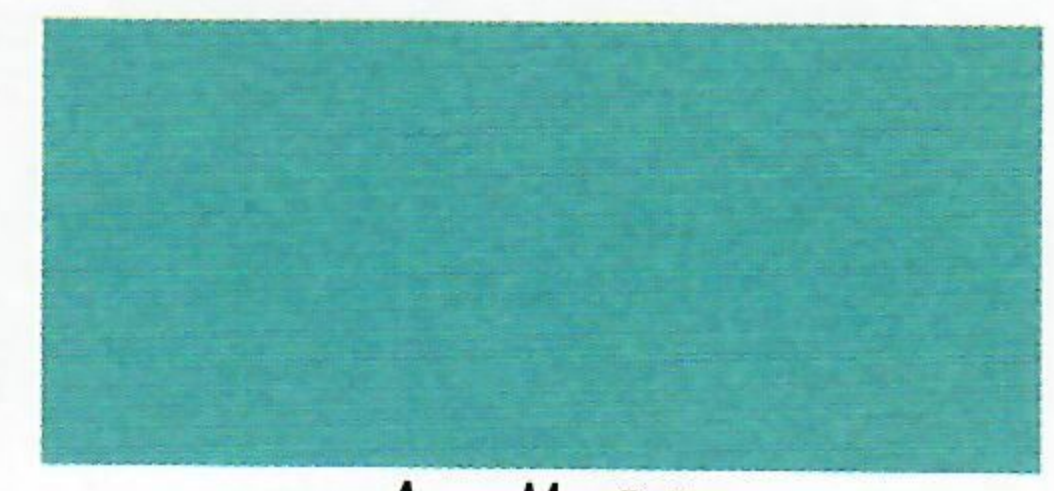
Engine	TRANSMISSIONS	
	5-Spd. Manual	3-Spd. Auto
1.0 Liter L-3 with Electronic Fuel Injection	■	□

■—Standard. □—Optional.



The smooth-shifting 5-speed manual transmission offers 4th and 5th gear overdrive for low-RPM highway cruising.

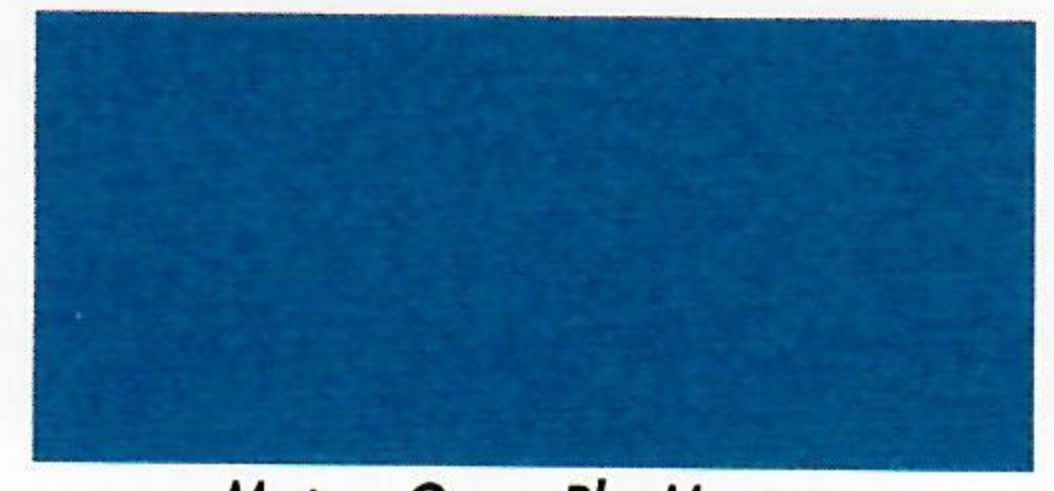
EXTERIOR COLORS



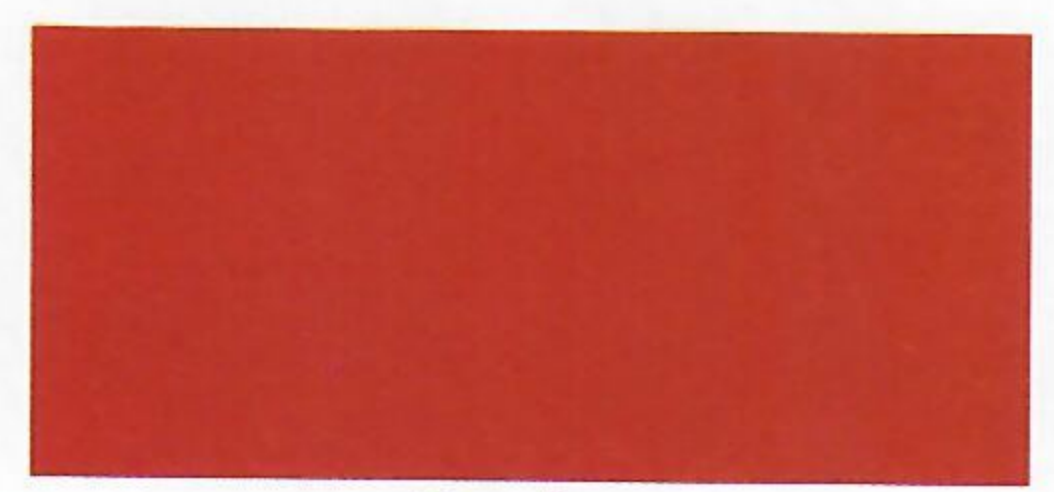
Aqua Metallic*†



Competition Blue



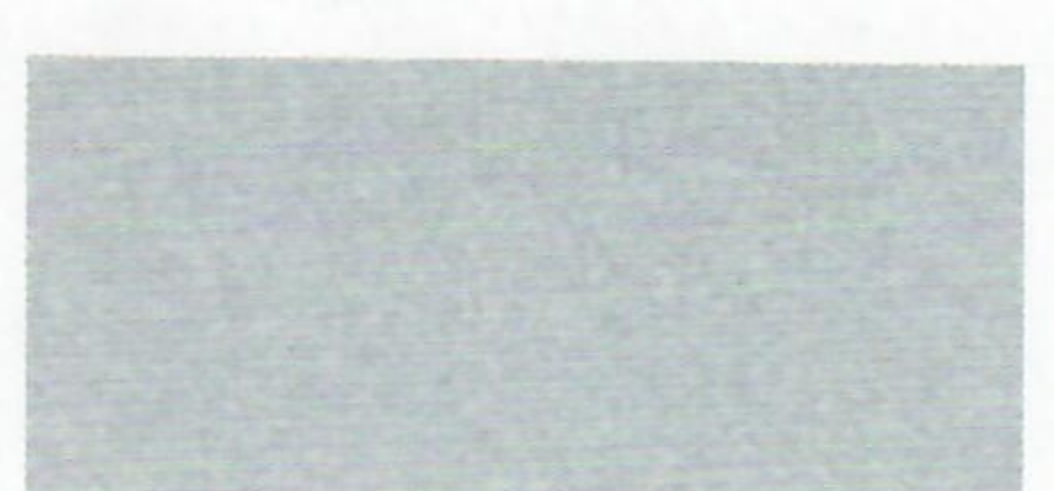
Medium Quasar Blue Metallic*†



Bright Red*



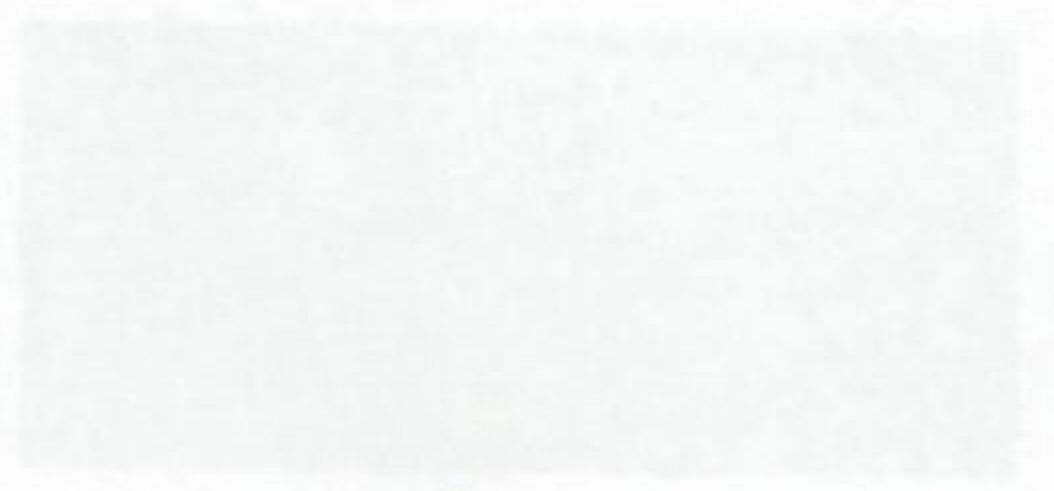
Brilliant Red Metallic*†



Silver Metallic*†



Yellow (LSi only)



White

*Not available on XFI Coupe. †Not available on Convertible.

PREFERRED EQUIPMENT GROUPS:

Geo Metro features optional Preferred Equipment Groups to help simplify the buying process. Choose the package containing the equipment you desire, then select from the list of individually available options that follows. It's that simple.

Geo Metro XFI Coupe	1	2
GROUP 1		
Engine: 1.0 Liter L-3 with EFI	■	■
Transmission: 5-Speed Manual	■	■
Tires: P145/80R-12 All-Season Steel-Belted Radial Ply Blackwall	■	■
GROUP 2		
Radio: Electronically Tuned AM/FM Stereo with Seek-Scan and Digital Clock		■

Geo Metro Coupe/Sedan	1	2	3
GROUP 1			
Engine: 1.0 Liter L-3 with EFI	■	■	■
Tires: P145/80R-12 All-Season Steel-Belted Radial Ply Blackwall	■	■	■
GROUP 2			
Radio: Electronically Tuned AM/FM Stereo with Seek-Scan and Digital Clock		■	■
GROUP 3			
Air Conditioning			■

Geo Metro LSi Coupe/Sedan	1	2	3
GROUP 1			
LSi Equipment Package	■	■	■
Engine: 1.0 Liter L-3 with EFI	■	■	■
Tires: P145/80R-12 All-Season Steel-Belted Radial Ply Blackwall	■	■	■
GROUP 2			
Radio: Electronically Tuned AM/FM Stereo with Seek-Scan and Digital Clock		■	■
GROUP 3			
Air Conditioning			■

Geo Metro LSi Convertible	1	2
GROUP 1		
Engine: 1.0 Liter L-3 with EFI	■	■
Transmission: 5-Speed Manual	■	■
Tires: P165/65R-13 All-Season Steel-Belted Radial Ply Blackwall	■	■
GROUP 2		
Transmission: 3-Speed Automatic		■



Optional electronically tuned AM/FM stereo with seek-scan, stereo cassette tape player and digital clock.



A tachometer is included in the Metro LSi Convertible's instrumentation.

INDIVIDUALLY AVAILABLE OPTIONS

- Air Conditioning
 - Body-Side Moldings (XFI only)
 - Dual Outside Rearview Mirrors (left-hand remote) (XFI only)
 - Electronically Tuned AM/FM Stereo with Seek-Scan and Digital Clock
 - Electronically Tuned AM/FM Stereo with Seek-Scan, Stereo Cassette Tape Player and Digital Clock
 - Floor Mats, Front and Rear Color-Keyed
 - Rear-Window Defogger (standard on LSi except Convertible)
 - Rear-Window Wiper/Washer (NA* on XFI or LSi Convertible)
 - Sport Stripping (NA* on XFI or LSi)
 - Transmission: 3-Speed Automatic (NA* on XFI).
- *NA—Not Available.



A hard tonneau cover conceals the Geo Metro LSi Convertible's folding top when down.



A 3 speed automatic transmission is optional on all Geo Metro models except the XFI Coupe.

G . .

T R A C K E R

Geo Tracker 4x4 is a high-energy fun machine that will take you where you want to go — on road or off. There's also a very affordable two-wheel-drive Tracker Convertible that is easy to personalize.



There are five models to select from: Geo Tracker 4x4 and 4x4 Convertible, Geo Tracker LSi 4x4 and LSi 4x4 Convertible and Geo Tracker 4x2 Convertible.

Interior details include custom trim with molded vinyl door trim panels, color-keyed floor mats, intermittent windshield wipers and tinted glass.

Geo Tracker is unruffled by the challenges of city traffic. Maneuverability is excellent with the short 86.6-inch wheelbase and 142.5-inch overall length.

Both Geo Tracker 4x4 and 4x4 Convertible models are built on rugged ladder-type frames with heavy-duty MacPherson Strut independent front suspension and coil springs at all corners.

The highly affordable Geo Tracker 4x2 (two-wheel-drive) Convertible has a rugged, youthful appearance that is easy to customize.

Geo Tracker Convertible.



Geo Tracker 4x4 LSi. White-lettered P205/75R-15 on-/off-road tires, styled steel wheels and a "Tracker 4x4" spare tire cover are standard LSi features.

G e o

T R A C K E R

Tracker LSi 4x4 offers you the most comfort and convenience features of any Tracker, plus the most interior plushness and exterior detailing.

The LSi Custom Cloth interior is sporty, yet comfortable — even for long trips. Rear bucket seats have a "fold, flip and stow" feature that adds flexibility and capacity to Tracker's cargo-handling capabilities.

Both Geo Tracker 4x4 LSi and 4x4 LSi Convertible include automatic locking hubs for shifting in and out of four-wheel drive from inside the vehicle.

Exterior decor features include body-color bumpers and mirrors, body-side moldings, rocker panel moldings, a spare tire cover and a rear-window wiper/washer (except Convertible).

Geo Tracker 4x4 LSi Convertible.





Geo Tracker 4x4 Convertible. A spare tire and tailgate lock is standard. Both Geo Tracker 4x4 and 4x4 Convertible models are built on rugged ladder-type frames with heavy-duty MacPherson Strut independent front suspension and coil springs at all corners.

The steel-roofed Geo Tracker 4x4 includes standard electric rear-window defogger and swing-out rear side windows.



G e o

T R A C K E R

The highly affordable standard Geo Tracker is one truck-tough 4x4. Plentiful low-end torque and excellent response at higher speeds are provided by a 1.6 Liter L-4 engine with single overhead camshaft and Electronic Fuel Injection.

A 5-speed manual transmission, four-wheel drive with manual locking front hubs and a two-speed transfer case deliver power to the P205/75R-15 on-/off-road tires. A rear-wheel anti-lock brake system is standard on all models (operates in 2WD only).

T R A C K E R

Geo Tracker 4x2 Convertible makes the open life-style more affordable. And if the clean body sides of the base Geo Tracker reflect an opportunity to show your own personalized vehicular graphics to the world, that's ok, too.

The canvas top can be opened above the doors to allow generous quantities of sunlight—or moonlight—inside. Or it can be fully removed for wide-open fun.

The 2-wheel-drive Tracker includes the peppy, flexible, 1.6 Liter L-4 engine with single overhead camshaft and Electronic Fuel Injection, and a 5-speed manual transmission. Styled wheels with P195/75R-15 tires and a rear-wheel anti-lock brake system are standard.



Geo Tracker 4x2 Convertible interior with optional rear seat.

Geo Tracker Convertible has a standard sunroof and easy-to-drop top for maximum ventilation on summer days and nights.



T R A C K E R

Geo Tracker is built on a solid ladder-type frame. But the interior reveals the softer side of Geo Tracker.

Every Geo Tracker provides cloth/vinyl reclining front bucket seats, a center console with coin holder, and more than 31 cu. ft. of cargo space (with rear seating stowed forward on 4x4 models).

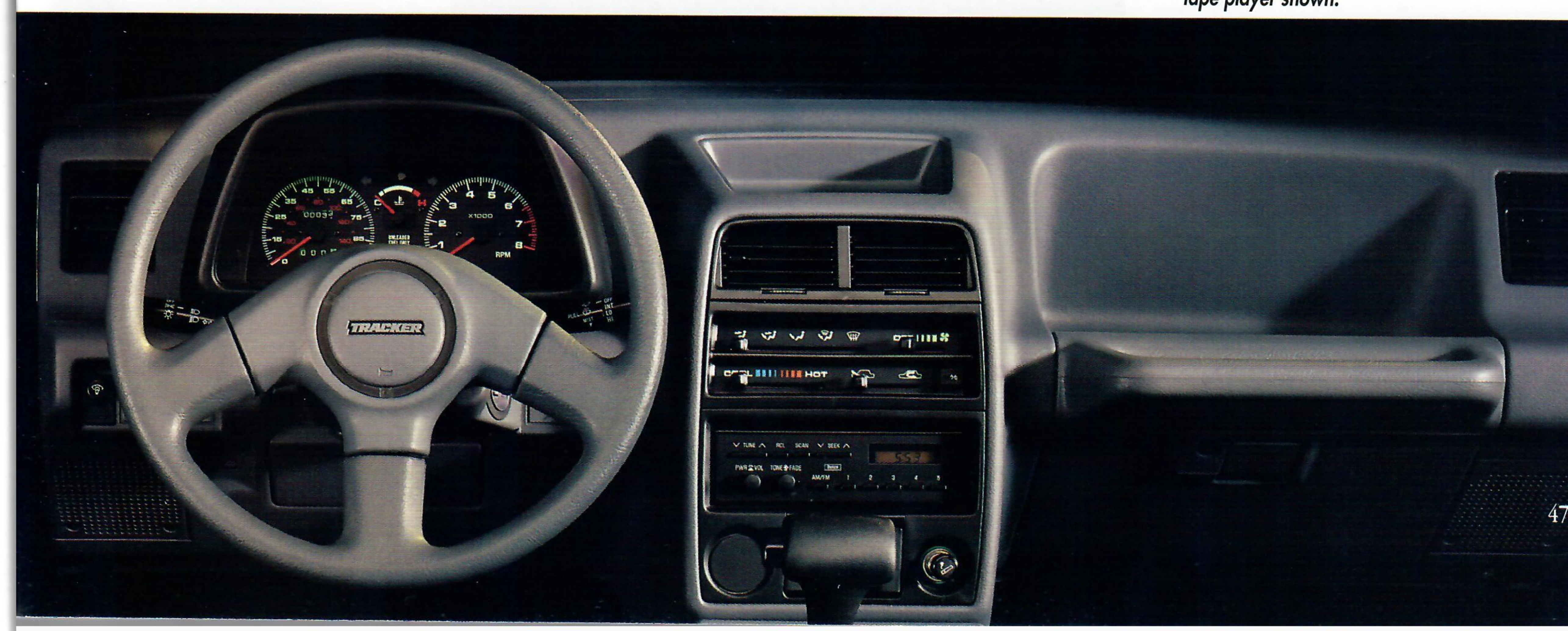
You also get analog instrumentation, trip odometer and temperature gage, heavy-duty heater/defroster with 4-speed fan and side-window defoggers, stowage trays, lockable glove box and three passenger-assist handles.

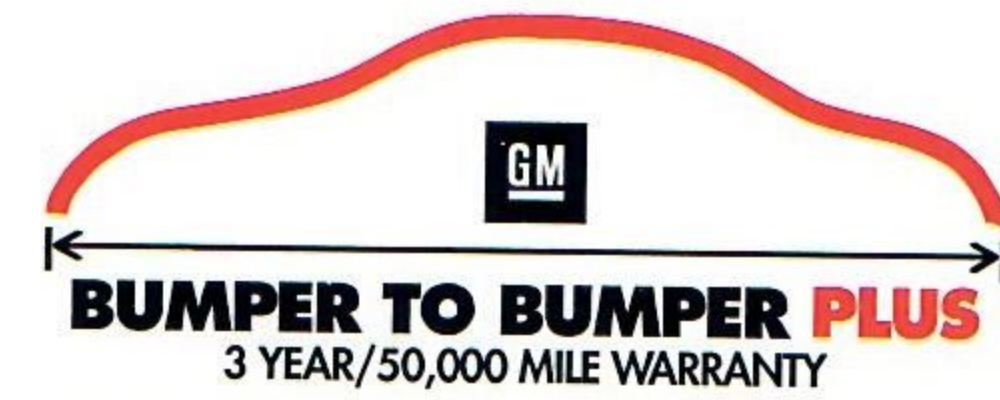
Geo Tracker LSi interior features include Custom Cloth trim, front and rear color-keyed floor mats, intermittent windshield wipers and tinted glass.



Geo Tracker 4x4 LSi features an up-level sport interior with Custom Cloth seat trim and reclining front and rear bucket seats (that "flip, fold and stow" conveniently out of the way). Also standard on Geo Tracker 4x4 LSi: Tinted glass, intermittent wipers and AM/FM stereo.

LSi instrument panel with optional AM/FM stereo with stereo cassette tape player shown.





GM's best small-car warranty ever covers Geo Tracker models. See inside back cover of this brochure for details. And see your Chevrolet/Geo dealer for complete terms of this limited warranty.

GEO TRACKER 4x2

- 1.6 Liter L-4 engine with single overhead camshaft and Electronic Fuel Injection
- 5-speed manual transmission with overdrive
- 11.1-gallon fuel tank
- Analog instrument cluster, trip odometer and temperature gage
- Cloth-and-vinyl seat trim
- Composite halogen headlamps
- Day/night inside rearview mirror
- Dual sport mirrors
- Front stabilizer bar
- Full carpeting, including cargo area
- Full Coil suspension
- Full floor console with coin storage
- Full-size swing-out lockable spare tire
- Headlamps-on reminder tone
- High-back reclining bucket seats with easy-entry feature for rear-seat passengers (rear seat optional on 4x2)
- Interior dome lamp (three position)
- Lockable glove box
- Manual lap/shoulder safety belts, all seating positions
- P195/75R-15 all-season steel-belted radial ply tires
- Power front disc/rear drum brakes with rear-wheel anti-lock brakes (operates in 2WD mode only on 4x4 models)
- Rocker panel molding (except Convertible)
- **Scotchgard™** Fabric Protector (on seats and door panels)
- Side-window defoggers
- Swing-open hinged tailgate with lock
- Tow hooks, front and rear.



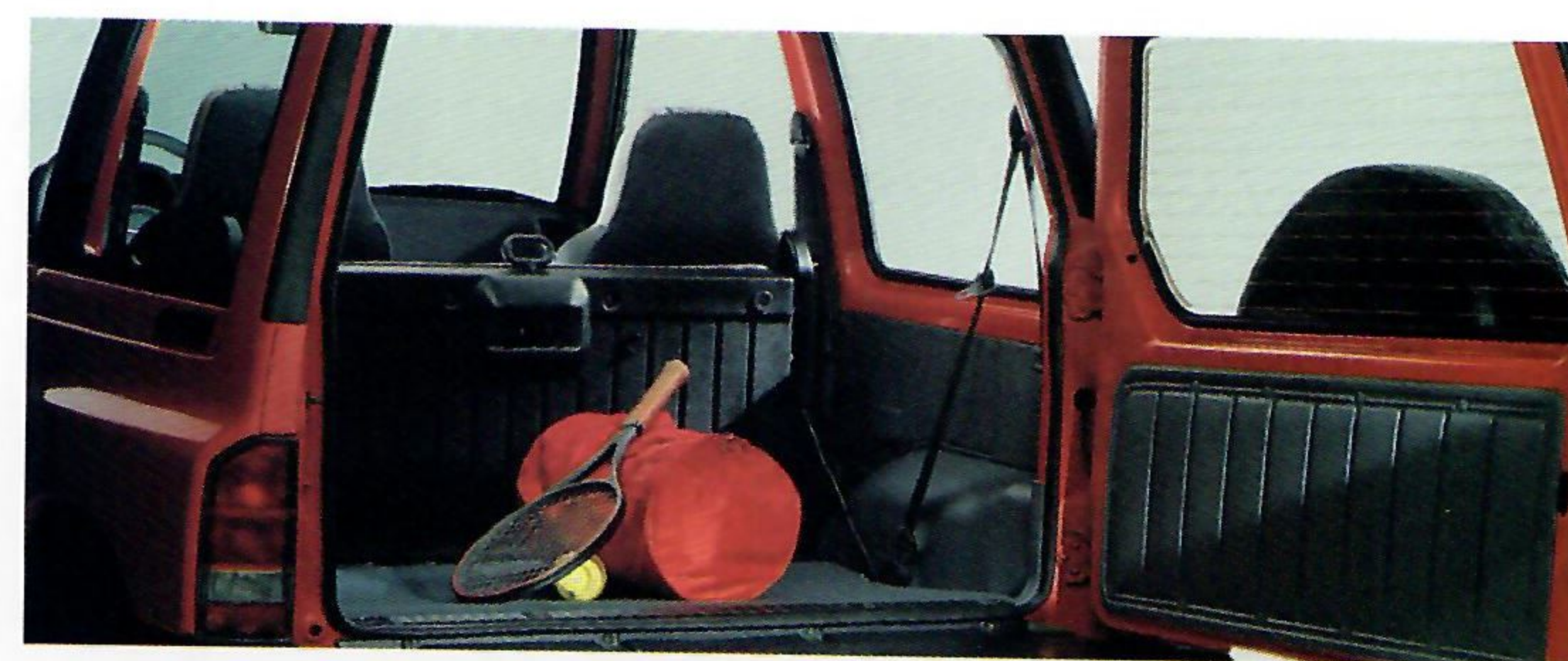
Geo Tracker interior seats and door panels are safeguarded with Scotchgard™ Fabric Protector.

GEO TRACKER 4x4

- In addition to or replacing Geo Tracker 4x2 equipment, the 4x4 LSi includes:
- Electric rear defogger (except Convertible)
 - *Flip, fold and stow™ rear bench seat
 - Four-wheel drive with manual locking front hubs
 - P205/75R-15 on-/off-road type tires
 - Tachometer
 - Two-speed transfer case.

GEO TRACKER 4x4 LSi

- In addition to or replacing Geo Tracker 4x4 equipment:
- Automatic locking wheel hubs
 - Body-color outside rearview mirrors (LH remote)
 - Body-color wraparound front and rear bumpers
 - Body-side moldings
 - Custom seat trim
 - Electronically tuned AM/FM stereo with digital clock
 - Floor mats, front/rear color-keyed
 - Individually folding rear bucket seats
 - Intermittent windshield wipers
 - LSi styled steel wheels
 - Molded vinyl door trim
 - Rear-window wiper/washer (with steel top only)
 - Rocker panel moldings (all models)
 - Spare tire cover
 - Tinted glass
 - White-lettered on-/off-road tires.



Lockable rear door allows convenient cargo loading.



Geo Tracker Convertible's top can be folded back to create a sunroof effect, or completely removed.

COLOR SELECTOR—ALL MODELS	
Interior Colors	Gray
Exterior Colors	
Black Met.	■
Competition Blue*	■
Medium Quasar Blue Met.†	■
Bright Red*	■
Brilliant Red Met.†	■
Silver Met.	■
White	■
Yellow	■

*Not available on LSi. †Not available on base Tracker.

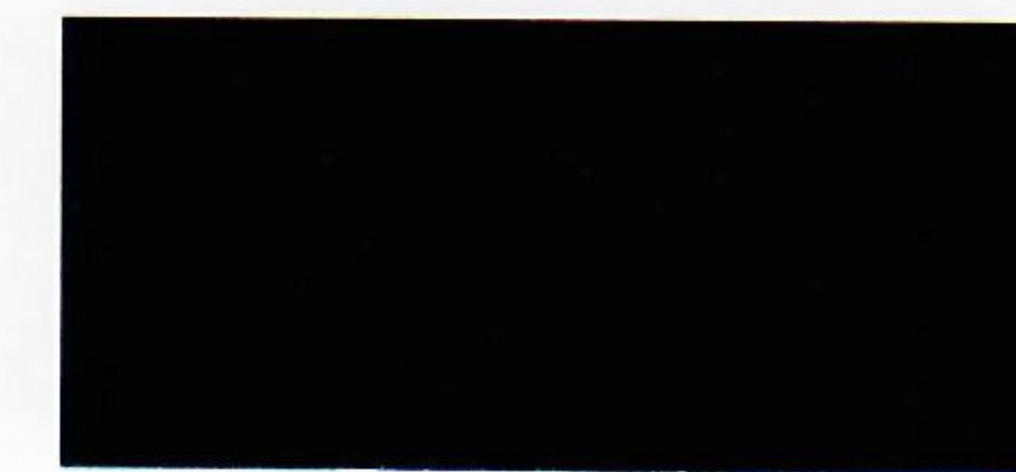
DIMENSIONS (in.)	
	Geo Tracker
Wheelbase	86.6
Length (overall)	142.5
Width (overall)	64.2
Height (loaded)	65.6
Head Room—Front/Rear	40.0/38.1 (39.5/38.3 on Convertible)
Leg Room—Front/Rear	42.1/31.7
Hip Room—Front/Rear	51.6/41.9
Shoulder Room—Front/Rear	51.6/50.2
Passenger Capacity	Four
Luggage/Cargo Capacity (cu. ft.)	8.7* (8.9 on Convertible†)
Fuel Tank Capacity (gals.)	11.1

*32.1 with rear seat down. †31.9 with rear seat down.

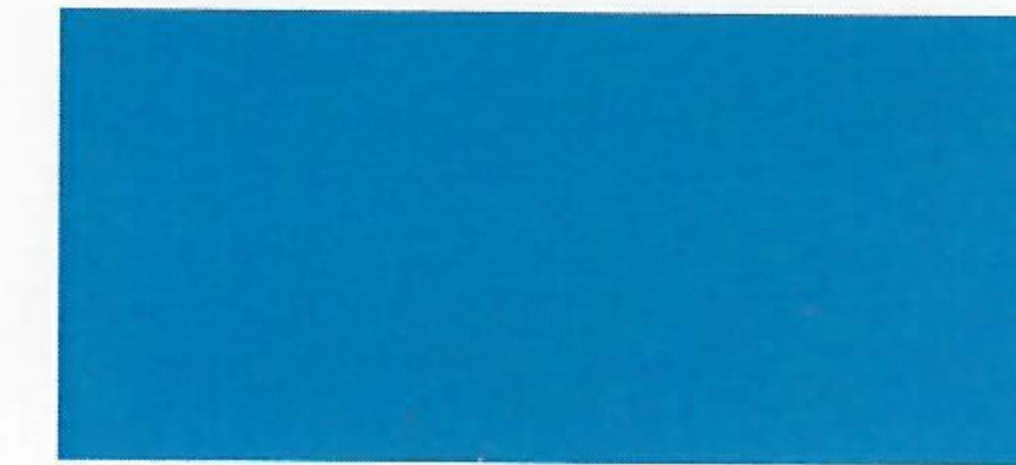
Engines	TRANSMISSIONS	
	5-speed Manual	3-speed Auto.
1.6 Liter L-4 with Electronic Fuel Injection	■	□

■—Standard. □—Optional.

EXTERIOR COLORS



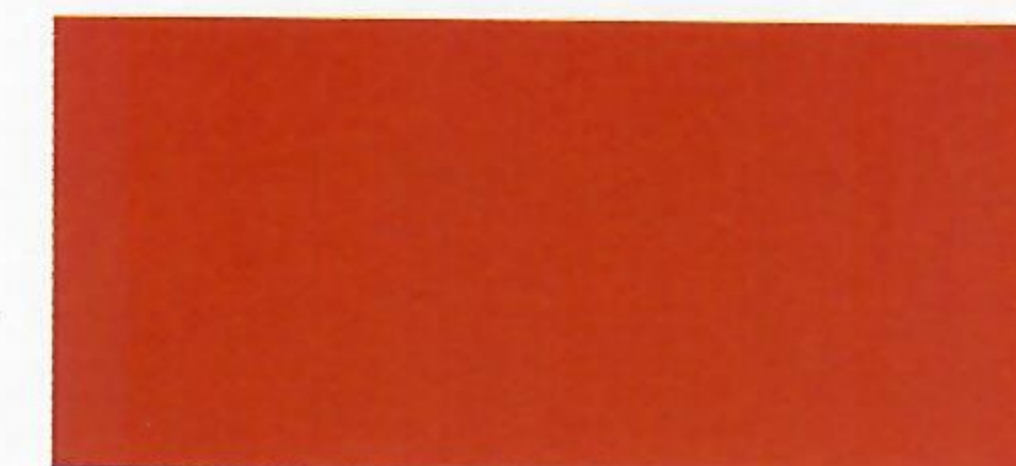
Black Metallic



Competition Blue*



Medium Quasar Blue Metallic†



Bright Red*



Brilliant Red Metallic†



Silver Metallic



White



Yellow

*Not available on LSi. †Not available on base Tracker.

PREFERRED EQUIPMENT GROUPS:

Geo Tracker features optional Preferred Equipment Groups to help simplify the buying process. Choose the package containing the equipment you desire, then select from the list of individually available options that follows. It's that simple.

Geo Tracker 4x2 Convertible	1	2	3
GROUP 1 Standard Equipment	■	■	■
GROUP 2 Radio: AM/FM Stereo with Seek-Scan and Digital Clock		■	■
GROUP 3 Air Conditioning			■

Geo Tracker 4x4 Convertible	1	2	3
GROUP 1 Standard 4x4 Equipment	■	■	■
GROUP 2 Radio: AM/FM Stereo with Seek-Scan and Digital Clock		■	■
GROUP 3 Air Conditioning			■

Geo Tracker 4x4 LSi and 4x4 LSi Convertible	1	2	3
GROUP 1 LSi Equipment Package	■	■	■
GROUP 2 Radio: AM/FM Stereo with Seek-Scan, Stereo Cassette Tape Player and Digital Clock		■	■
GROUP 3 Air Conditioning			■



Geo Tracker's center console is attractive and functional. Standard features shown include heater/defroster with power ventilation and 4-speed fan, coin storage, cigarette lighter and ashtray. Optional automatic transmission and AM/FM stereo shown.

INDIVIDUALLY AVAILABLE OPTIONS

- Air Conditioning
- Alloy Wheels (requires Spare Tire Cover)
- Automatic Transmission (with 4x4 models only, NA* with 4x2)
- Body-Side Moldings (includes Rocker Panel Moldings Geo Tracker Convertible)
- Electronically Tuned AM/FM Stereo with Seek-Scan and Digital Clock (included with LSi equipment)
- Electronically Tuned AM/FM Stereo with Seek-Scan, Stereo Cassette Tape Player and Digital Clock
- Floor Mats, Front and Rear (included with LSi)
- Front Differential and Transfer Case Shield Plates (4x4 models only)
- Power Steering
- Rear seat (4x2 only)
- Spare Tire Cover (included with LSi)
- Trailering Equipment.

*NA—Not Available.



Reclining front bucket seats are standard on all models. LSi Custom Cloth seat shown.

AN ENVIRONMENTAL PERSPECTIVE

Chevrolet takes considerable pride in its ability to provide high-quality vehicles for the growing sport of off-roading. However, as providers of such vehicles, we also share responsibility for the preservation of that which makes the very thrill of off-road possible: the natural environment.

We share that responsibility with you, and we ask you to join with us in a "pro-environment" attitude as you pursue the many pleasures of "four-wheeling" in your Geo Tracker 4x4.

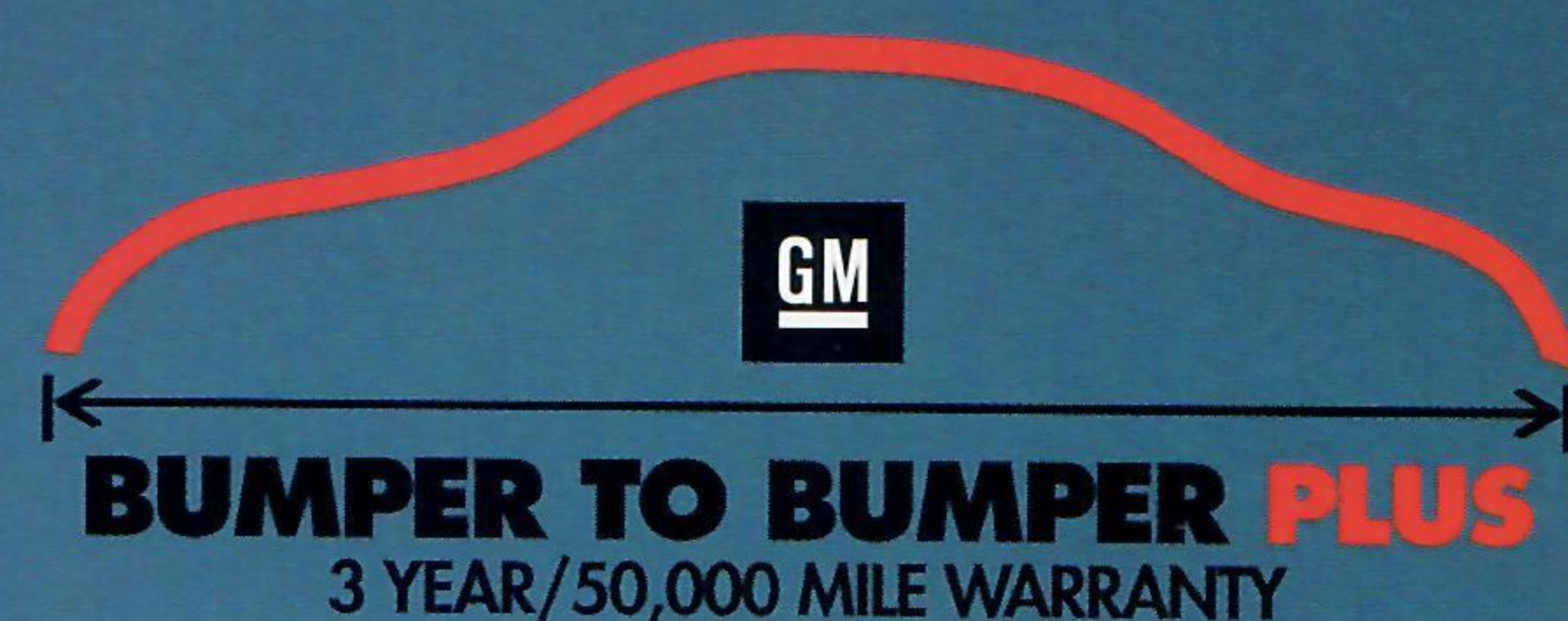
As the manufacturer of many types of light-duty trucks, Chevrolet encourages you to drive at least as carefully off-road as on-road--and to do your part to help preserve the beauty of America's wildlands.

If you intend to purchase a Geo Tracker and drive it off-road, there is literature available that offers excellent suggestions for safe, responsible four-wheeling. It's advice designed to protect you, your vehicle *and* the environment.

Your Geo Tracker *Owner's Manual* clearly describes the vehicle's capabilities and limitations, plus the maintenance schedule required to keep your Geo Tracker running right. We strongly suggest that you thoroughly read the *Owner's Manual*.

Additional good ideas on responsible four-wheeling are available in *Chevy Outdoors* magazine and in other publications. Ask your Chevrolet/Geo dealer for subscription information on *Chevy Outdoors*.





GM's 3-year/50,000-mile limited warranty covers repairs for the 1991 Geo models, including labor and parts, to correct any defects in material or workmanship occurring during the warranty period. After the first year or 12,000 miles there is a \$100 deductible per repair visit. Warranty features include air conditioning repair, towing, no-cost warranty transfer, 6-year/100,000-mile body sheet rust-through protection and a 5-year/50,000-mile emission control system coverage. Items not covered include tires (which are covered by their manufacturer) and normal maintenance. See your Chevrolet dealer for terms of this limited warranty.



GEO PASSENGER CAR SAFETY FEATURES

Occupant Protection

- Automatic safety belt system for driver and right front passenger (Geo Prizm, Geo Metro Coupe/Sedan) OR Supplemental Inflatable Restraint system, driver's-side only, with manual lap/shoulder safety belts for the driver and right front passenger (Geo Storm, Geo Metro Convertible), both including visual and audible warning systems
- Manual lap/shoulder safety belts, outboard rear-seat positions
- Manual lap safety belts, center front/rear-seat positions, where applicable
- Energy-absorbing steering column
- Energy-absorbing instrument panel
- Energy-absorbing seat-back tops, front
- Interlocking door latches
- Side-guard door beam
- Passenger-guard inside door lock handles
- Inertia-locking, folding front seat-backs, two-door models (manual release on Geo Metro)
- Safety armrests
- Head restraints, driver and right front passenger (adjustable or integral)
- Break-away inside rearview mirror
- Security door lock and door retention components.

Accident Avoidance

- Side marker lamps and reflectors
- Parking lamps that illuminate with headlamps
- Four-way hazard warning flashers
- Backup lamps
- Center high-mounted stop lamp
- Directional signal control with lane-change feature
- Windshield defroster, washer and multi-speed wipers
- Inside rearview mirror
- Outside left rearview mirror
- Brake system with dual master cylinder and warning light
- Starter safety switch
- Dual-action hood latch
- Low-glare finish on inside windshield moldings, wiper arms and blades, metallic steering wheel surfaces
- Illuminated heater and defroster controls
- Illuminated windshield wiper and washer controls (if on instrument panel)
- Tires with built-in tread wear indicators.

GEO TRACKER SAFETY FEATURES

Occupant Protection

- Manual lap/shoulder safety belts, outboard front/rear-seat positions
- Energy-absorbing steering column
- Energy-absorbing instrument panel
- Energy-absorbing seat-back tops, front
- Interlocking door latches
- Inertia-locking, folding front seat-backs
- Safety armrests
- Break-away inside rearview mirror
- Security door lock and door retention components.

Accident Avoidance

- Side marker lamps and reflectors
- Parking lamps that illuminate with headlamps
- Four-way hazard warning flashers
- Backup lamps
- Directional signal control with lane-change feature
- Windshield defroster, washer and multi-speed wipers
- Outside left and right rearview mirrors
- Brake system with dual master cylinder and warning light
- Starter safety switch
- Dual-action hood latch
- Low-glare finish on inside windshield moldings, wiper arms and blades, metallic steering wheel surfaces
- Illuminated heater and defroster controls
- Tires with built-in tread wear indicators.

IMPORTANT: A Word About This Catalog.

We have tried to make this catalog as comprehensive and factual as possible. We reserve the right, however, to make changes at any time, without notice, in prices, colors, materials, equipment, specifications, models and availability. Since some information may have been updated since the time of printing, please check with your Chevrolet dealer for complete details.

A Word About Engines.

Chevrolets are equipped with engines produced by different operating units of GM, its subsidiaries or suppliers to GM worldwide.

A Word About Assembly.

Chevrolets are assembled by different operating units of General Motors, its subsidiaries or suppliers to GM worldwide. We sometimes find it necessary to produce Chevrolets with different or differently sourced components than originally scheduled. All such components have been approved for use in Chevrolets and will provide the quality performance associated with the Chevrolet name. Since some options may be unavailable when your vehicle is assembled, we suggest that you verify that your vehicle includes the equipment you ordered, or if there are changes, that they are acceptable to you.

A Word About Updated Service Information.

Chevrolet regularly sends its dealers useful service bulletins about Chevrolet products. Chevrolet monitors product performance in the field. We then prepare bulletins for servicing our products better. Now you can get these bulletins, too. Ask your dealer. To get ordering information, call toll free 1-800-551-4123.

A Word About Corrosion Protection.

Chevrolets are designed and built to resist corrosion. All body sheet metal components are warranted against rust-through corrosion for 6 years/100,000 miles. Application of additional rust-inhibiting materials is not required under the corrosion coverage.

At your Chevrolet dealer, financing or leasing your new Geo can be as easy as saying GMAC.

General Motors, GM, the GM emblem, Chevrolet, Geo, Storm and the Geo grille emblem are registered trademarks of the General Motors Corporation. Prizm and Metro are trademarks of the General Motors Corporation. 1990 General Motors Corporation. All rights reserved.



Let's get it together...
buckle up.

GET TO KNOW GEO.
A UNIQUELY APPEALING
FAMILY OF HIGH-QUALITY,
AFFORDABLE VEHICLES.

GEO 

SOLD AND SERVICED BY
CHEVROLET/GEO DEALERS.

The New Site For Car Brochures



DEZO'S GARAGE