

1996
Geo Metro

1996 Geo Metro. The Small Car With Big Ideas.

Geo Metro is a very sensible idea — an easy-to-own and easy-to-like small car that's also very easy on gas.*

This remarkable automobile comes in two sizes — a sporty hatchback coupe and a roomy four-door sedan.

Every Metro also comes with two air bags, safety-cage construction

surrounding the entire passenger compartment, and Automatic Daytime Running Lamps.

So if you seek value, efficiency and new-car warranty protection, get to know Geo Metro. It's the small car with big ideas.

*Projected EPA estimated MPG city 44/highway 49 for Metro Coupe with 5-speed manual transmission and 1.0 Liter engine.



Metro LSi Coupe in Wildfire Red (at left),
Metro LSi Sedan in Scuba Blue Metallic (at right).

*Geo Metro Sedan.
It's A Big Car In A Small-Car Body.*

Geo Metro Sedan for 1996 offers impressive room for four passengers, the convenience of four doors, and a spacious trunk — all wrapped up in a sophisticated shape.

The standard 1.3 Liter, four-cylinder engine gives you power for passing and

merging, while the advanced four-wheel independent suspension provides a smooth and stable ride.

Choose from Metro Sedan or Metro LSi Sedan. The LSi has aero-style composite halogen headlamps, body-color front and rear bumpers, 7-spoke wheel covers and an upscale LSi interior.



Metro LSi Sedan in Silver Sage Metallic. Some optional equipment shown.

Inside Metro Sedan. More Room Than You'd Think.

You'll appreciate Geo Metro for all the right reasons — it's inexpensive to buy, fun to drive and easy to park.

There's one more big reason to look into a Metro Sedan. Room. Four adults can ride in comfort, and wide-opening rear doors add to the convenience.

Other features you may not expect to find in such an affordable car include a center console with dual cup holders, and storage bins in the front doors.

When you select the LSi version of Metro Sedan, you get these additional interior features: Custom Cloth seat and door trim and a convenient split-folding rear seat.

Metro LSi Sedan interior in Gray.
Some optional equipment shown.



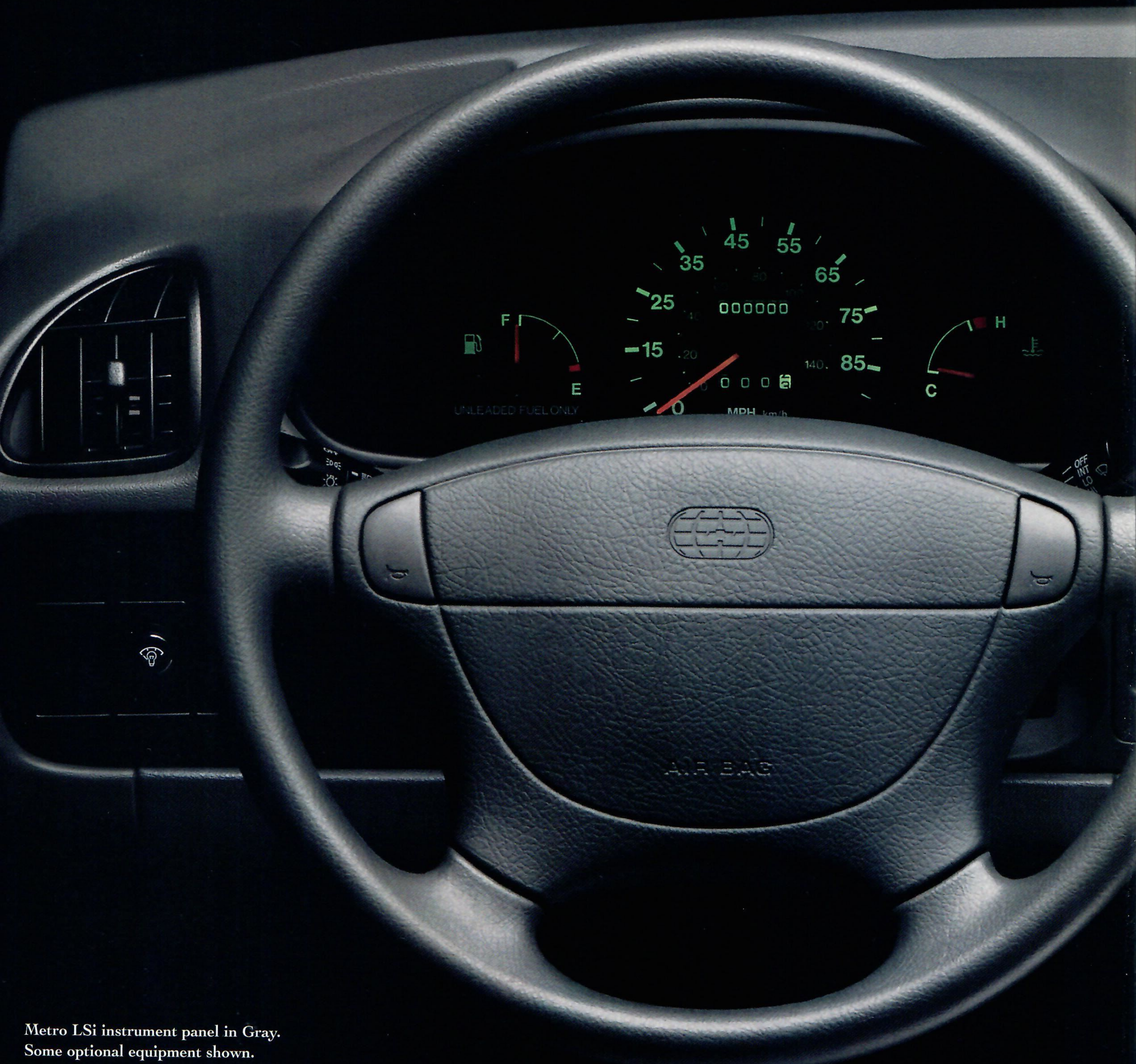
Metro Goes Way Beyond Basic.

When you get behind this "soft-touch" 4-spoke steering wheel, you are surrounded by quality and contemporary style. Visibility is great, too.

Gauges are analog. The center console features cup holders and a storage tray. And a headlamps-on reminder

tone is standard. Options include automatic transmission, air conditioning and an AM/FM stereo with both cassette *and* CD players (not available on the standard Coupe).

Obviously, the 1996 Geo Metro is anything but basic.



Metro LSi instrument panel in Gray. Some optional equipment shown.

Metro. It's The Small Car With Lots Of Big-Car Stuff.

Geo Metro for 1996 is more than great fuel economy and a great low price. A lot more.

Metro has more room than you'd imagine. Loads of places to put your stuff. A folding rear seat is standard. So are cup holders. And Scotchgard™ Fabric Protector on cloth seats.

You may want even more, and you can have it in a Metro. Options include automatic transmission, air conditioning, and a four-wheel anti-lock brake system (ABS).

Metro gives you everything you expect to find in an affordable small car ... and a lot of nice things you didn't.



Metro Sedan in Woodland Green Metallic. Some optional equipment shown.

Scotchgard™ Fabric Protector
Scotchgard™ Fabric Protector, on cloth seats (and door trim on LSi Sedan), is standard in every Geo Metro, for soil resistance and easy cleanup.



Split-Folding Rear Seat
A convenient split-folding rear seat with a trunk pass-through feature is standard in the LSi Sedan. Other Metro models feature a full-folding rear seat-back.



Room For All Your Stuff
If you've got the stuff, Geo Metro's got the room. And bumper-level loading means you don't have to lift heavy packages over a high sill.



In-Door Storage Bins
Standard on all models. These spacious bins are a great place to store things like maps or sunglasses. A passenger seat-back pocket is standard on LSi.



Slide-Out Cup Holder
Located conveniently on the center console, with room for two cups. Standard on all Metros.



Optional Cassette/CD Players
An enhanced AM/FM stereo with cassette and CD players is a really cool option. It's also a feature that's not offered in many luxury cars!



You're Surrounded By Advanced Technology And A Comprehensive Safety Package.

Geo Metro technology delivers

the quiet ride and feeling of substance
you might not expect in a small car.

And safety is designed-in, not added on.

Standard Safety Features

The Metro safety package includes two air bags, safety-cage construction surrounding the entire passenger compartment, Automatic Daytime Running Lamps, and child security rear-door locks (on four-door models). A four-wheel anti-lock brake system (ABS) is optional on all models.

Designed-In Quiet Ride

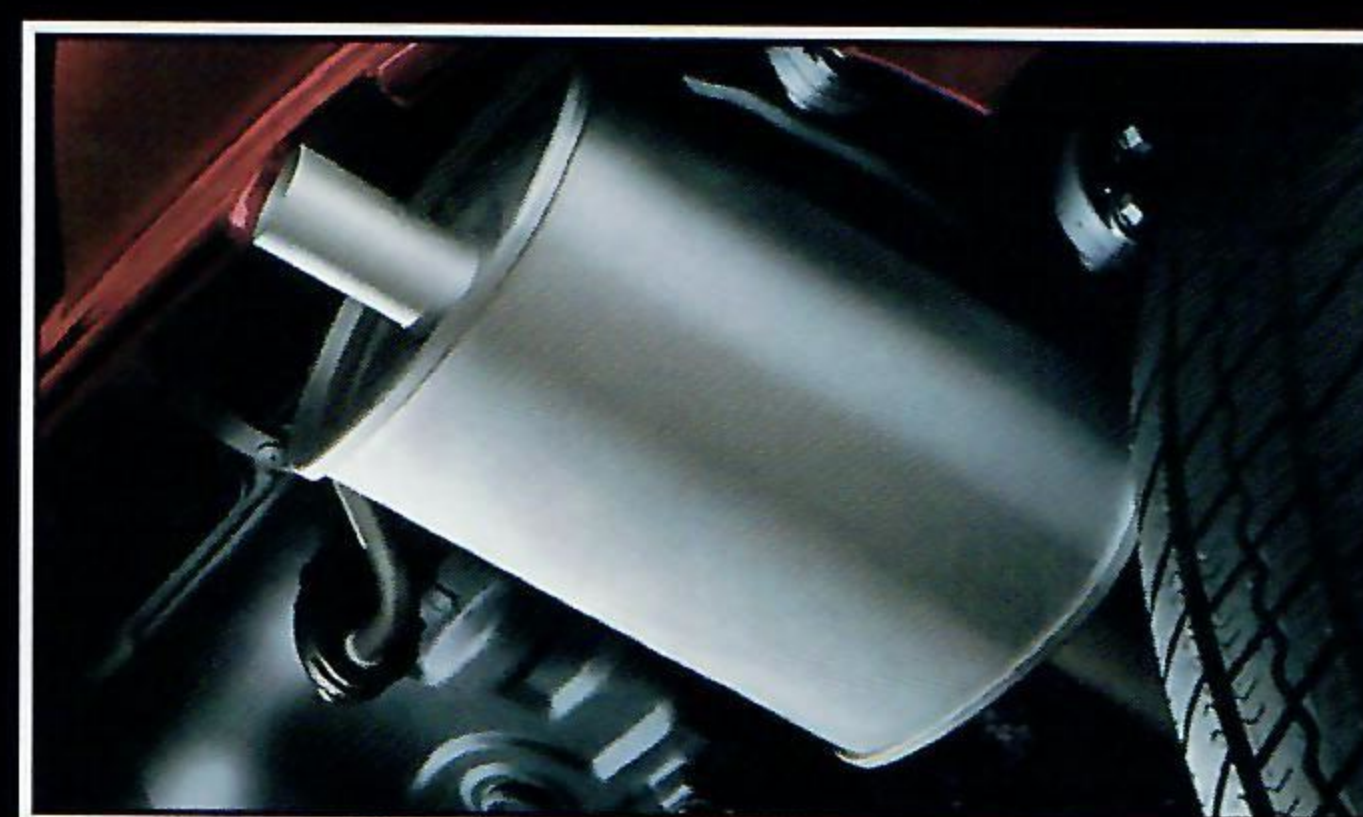
Metro's quiet, refined ride is enhanced by a reinforced, rigid body structure with five strong cross-car beams, including one that's bolted just beyond the dash that's designed to squelch squeaks and rattles.

Metro LSi Coupe in Wildfire Red.
Some optional equipment shown.



Corrosion-Resistant Exhaust

Geo Metro stainless-steel muffler and tailpipe system, standard in all models, is designed to resist corrosion.



Fuel Efficient!

You'll go a long way on a gallon! The 5-speed Geo Metro Coupe offers projected EPA estimated MPG city 44/highway 49.



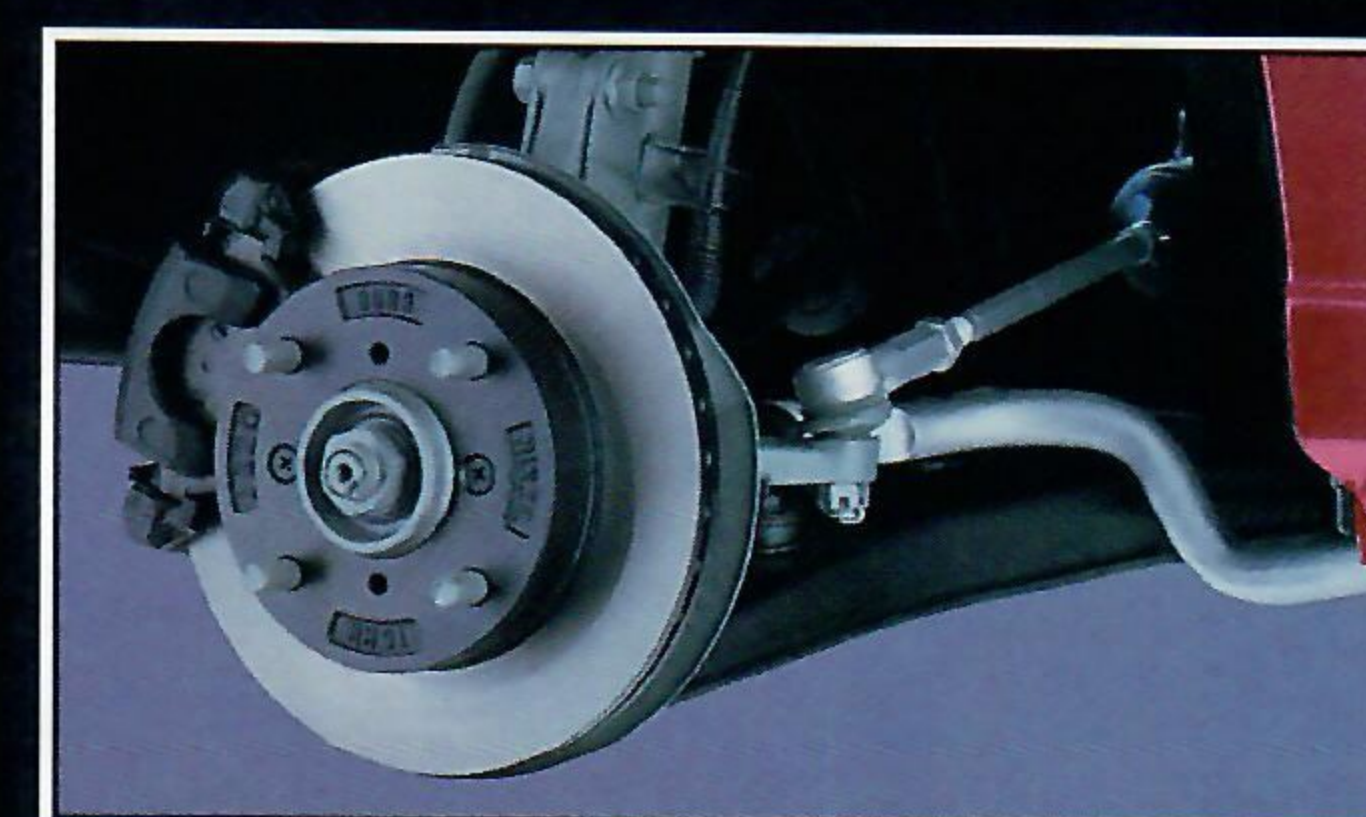
1.3 Liter Engine

A 70-hp engine with Electronic Fuel Injection is standard in all Metro Sedans and optional in all Metro Coupes. A 1.0 Liter, 5-cylinder engine is standard in Metro Coupes with a 5-speed manual transmission.



4-Wheel ABS

A four-wheel anti-lock brake system (ABS) is optional in all models. ABS minimizes wheel lockup while braking, and is designed to help you maintain steering control and help prevent skidding when braking on most slippery surfaces.



Dual Air Bags

Every Geo Metro comes with two air bags, one for the driver and one for the front-seat passenger. Always wear safety belts, even with air bags.



Metro Safety Features

Occupant Protection.

- Supplemental Inflatable Restraint: manual lap/shoulder safety belts and air bags, driver/front passenger ▪ Manual lap/shoulder safety belts, outboard rear-seat positions
- Energy-absorbing steering column ▪ Energy-absorbing instrument panel ▪ Folding front-seat locks, manual (two-door models)
- Interlocking door latches ▪ Safety armrests
- Breakaway inside rearview mirror
- Security door locks and door-retention components ▪ Laminated windshield glass, urethane-bonded ▪ Head restraints, front, integral ▪ Steel side-door beams ▪ Passenger-guard inside door-lock handles ▪ Safety belt use reminder system ▪ Front and rear crush zones ▪ Tempered safety glass, side and rear windows ▪ Dual sun visors ▪ Pressure-lock radiator cap ▪ Child security rear-door locks.

Crash Avoidance.

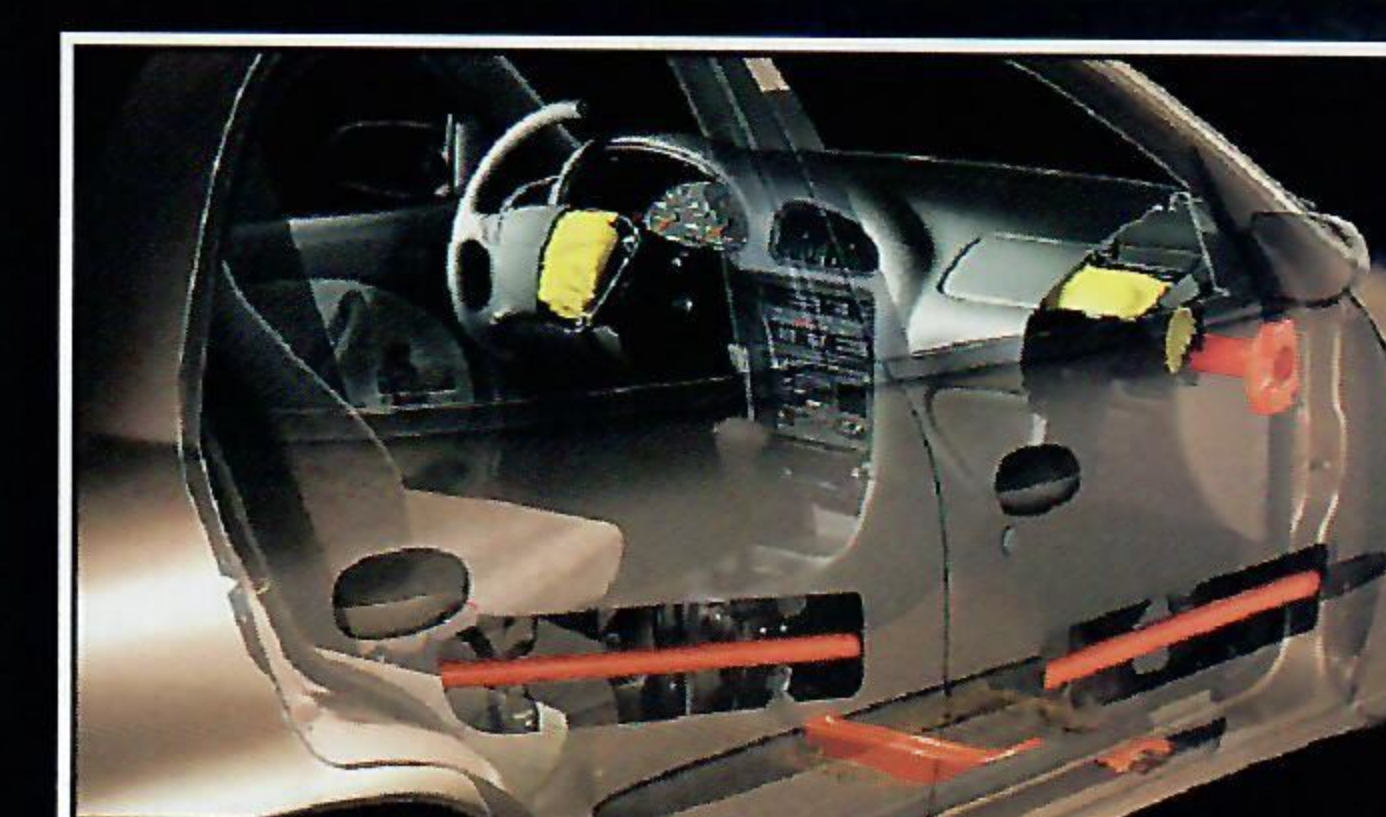
- Automatic Daytime Running Lamps
- Side-marker lamps and reflectors ▪ Parking lamps ▪ Four-way hazard-warning flashers
- Backup lamps ▪ Directional signal control
- Windshield defrosters, washers and multi-speed wipers ▪ Inside day/night rearview mirror ▪ Outside rearview mirrors ▪ Brake system with dual master cylinder plus warning light ▪ Center high-mounted stop lamp ▪ Starter safety switch ▪ Dual-action hood latch ▪ Low-glare finish (inside windshield moldings, wiper arms and blades, metallic steering wheel surfaces) ▪ Illuminated heater and defroster controls ▪ Tires with built-in tread-wear indicators ▪ Brake/transmission shift interlock.

Theft Deterrence.

- Visible vehicle identification number ▪ Theft-deterrent steering column ▪ Theft-deterrent key-locking system ▪ Remote inside hood release.

Safety-Cage Construction

A rugged steel safety cage surrounds the entire Metro passenger compartment. This cage is so strong it helps Metro meet 1997 Federal standards for side-impact protection, today.





Geo Metro Coupe. One Heck Of A Car.

Just because your commute may be routine doesn't mean your car has to be. Even driving to work can be fun in a '96 Metro Hatchback Coupe.

With its innovative 1.0 Liter engine, this Metro is one frugal performer (projected EPA est. MPG city 44/highway 49).

Or — for 1996 — you can now order the 1.3 Liter, four-cylinder engine in any Hatchback Coupe. This engine delivers a remarkable blend of smooth power and fuel efficiency (projected EPA est. MPG city 39/highway 43 with 5-speed manual transmission).

For a dressy appearance, choose the LSi version. It includes composite halogen headlamps, body-color bumpers, dual remote outside mirrors, 7-spoke wheel covers, and a special Custom Cloth interior.

A Roomy Interior!

The Geo Metro Hatchback offers room for four passengers, with plenty of head and leg room. Standard interior features include reclining front seats, a center console with cup holder, and a headlamps-on reminder tone.



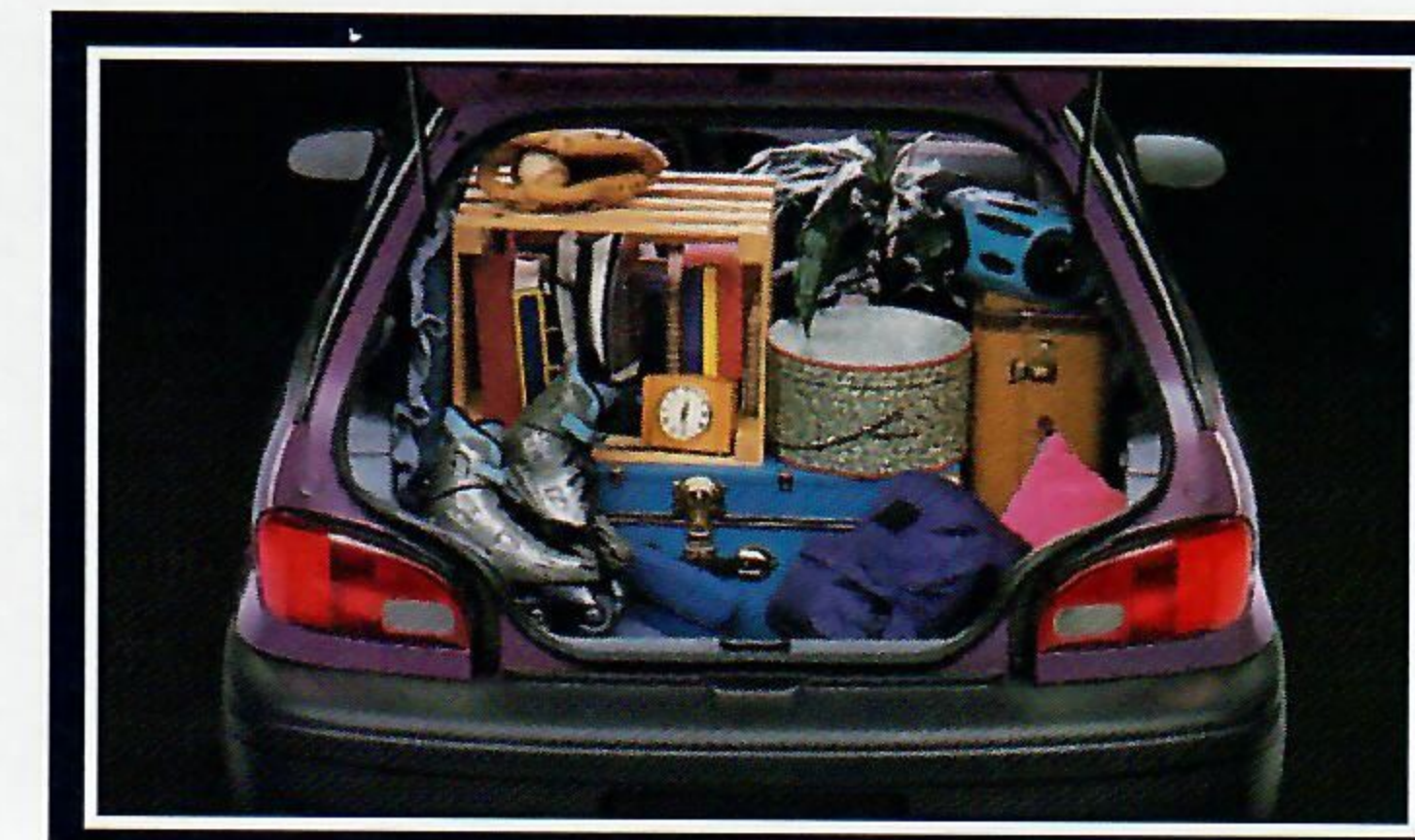
Back Seat Up ...

Here's room for four people, and up to 8.4 cu. ft. of cargo space. The cargo area is fully carpeted, too.



Or Down!

Folding the rear seat gives you 22.5 cu. ft. of cargo space, accessible through a wide-opening rear hatch. Bumper-level loading adds convenience.



Metro Coupe in Super Grape Metallic.
Some optional equipment shown.

Get To Know Geo.

The Geo philosophy is simple: give small-car buyers exacting quality and reliability at a highly affordable price. In the Geo line for 1996, you will find three distinct types of easy-to-own vehicles, all assembled in the United States or Canada.

In addition to the Geo Metro detailed in this catalog, the Geo line also includes the Prizm and the Tracker.

Prizm is the sophisticated 5-passenger sedan that delivers exceptional room and comfort in an affordable package.

Geo Tracker is the affordable compact sport utility vehicle that's as individualistic as its owners.

You can choose from a new 4-door version or the ever-popular 2-door Convertible. Select from 2WD or 4x4 models.

Whether you choose our sophisticated sedan (Prizm), our economical small car (Metro) or our fun-to-drive sport utility (Tracker), you'll be getting quality — at an easy-to-like price.



Proud Sponsor of the 1996 U.S. Olympic Team

Geo Customer Care.

We're proud to say that no import or domestic car company offers as large a dealer network as Chevrolet/Geo.

Wherever you go in the U.S.A., it's good to know that, if you should ever need it, service is always as near as a Chevrolet/Geo dealer.

As a Geo Metro owner, you are covered by Geo Customer Care, which includes the following:



Bumper to Bumper Warranty

The GM 3-year/36,000-mile (whichever comes first) limited warranty covers repairs for all 1996 Metros, including labor and parts, to correct any defects in material or workmanship occurring during the warranty period. Warranty features include air conditioning repair, towing, and no-cost warranty transfer. There is also emissions-control system coverage which varies by geographical location. There is no deductible. See your Chevrolet/Geo dealer for terms of this limited warranty.



Courtesy Transportation

Customers who purchase or lease a 1996 Metro will be able to take advantage of Courtesy Transportation at no additional charge when their vehicles are left at a participating dealership for repairs covered under the 3-year/36,000-mile Bumper to Bumper limited warranty. See your participating dealer for details.



24-Hour Roadside Assistance

Lost? We'll help you find your way. Locked out? We'll get you back in your car. Out of gas? We'll get you gas. Roadside Assistance is provided through a toll-free number (1-800-CHEV-USA) 24 hours a day, 365 days a year. Roadside Assistance offers two levels of service, *Basic Care* and *Courtesy Care*.

Roadside Basic Care provides:

- Free towing for warranty repairs (to closest dealer)
- Over-the-phone basic technical advice
- Available dealer services at reasonable costs (i.e., wrecker services, locksmith/key service, glass repair, etc.).

Roadside Basic Care covers you for as long as you own your Geo Metro.

Roadside Courtesy Care provides all the features of Roadside Basic Care, plus:

- Free towing (to closest dealer)
- Free locksmith/key service (when keys are lost on the road or locked inside)
- Free flat tire service, jump start
- Free fuel delivery on the road.

Courtesy Care is available to you for a period of 3 years or 36,000 miles (whichever comes first).

Metro Coupe in Slate Green Metallic.
Some optional equipment shown.

Geo Metro Buyer's Guide.

Optional Preferred Equipment Groups

NOTE: These optional Preferred Equipment Groups (PEGs) help simplify the buying process. Just choose the 1996 Geo Metro PEG containing the equipment you desire. You may also add selected individual options. (See Standards & Options chart below for model availability.) Some restrictions may apply. Please see your Geo salesperson for details.

Preferred Equipment Group Number	Metro Coupe			LSi Coupe			Metro Sedan			LSi Sedan		
	1	2	3	1	2	3	1	2	3	1	2	3
Standard Equipment	■	■	■				■	■	■			
LSi Equipment				■	■	■				■	■	■
Carpeted Front and Rear Floor Mats	■	■		■	■		■	■		■	■	
Body-Side Moldings	■	■		S	S	S	S	S	S	S	S	S
Tachometer	■	■		■	■							
Full Wheel Covers	■	■		S	S	S	S	S	S	S	S	S
AM/FM Stereo with Four Speakers	■			■	■		■	■		■	■	
Air Conditioning (with CFC-free refrigerant)	■			■			■			■		
Power Steering							■	■		■	■	

Standards & Options

NOTE: Some individually available options listed below may be included in specific Preferred Equipment Groups (see chart above). Some restrictions may apply. Please see your Geo salesperson for details.

Exterior	Metro Coupe	LSi Coupe	Metro Sedan	LSi Sedan
Automatic Daytime Running Lamps	S	S	S	S
Dark gray body-side moldings	O	S	S	S
Dark gray front and rear bumpers	S	—	S	—
Body-color front and rear bumpers	—	S	—	S
Corrosion-resistant, zinc-rich galvanized-steel body panels	S	S	S	S
Dual outside mirrors	S	—	S	—
Dual outside mirrors (left- and right-hand manual remote)	O	S	O	S
Recessed rectangular headlamps	S	—	S	—
Composite halogen headlamps	—	S	—	S
Remote fuel-filler-door	—	—	—	S
Remote trunk/hatch release	—	S	—	S
Underbody and lower-body protective coating	S	S	S	S

Interior

	Metro Coupe	LSi Coupe	Metro Sedan	LSi Sedan
Air conditioning (with CFC-free refrigerant)	O	O	O	O
Cargo light	—	—	—	S
Cargo security cover	O	O	—	—
Child security rear-door locks	—	—	S	S
Center console with cup holders and storage tray	S	S	S	S
Dome light (3-positions)	S	S	S	S
Floor mats, carpeted, front and rear	O	O	O	O
Full carpeting (includes cargo area on Coupe)	S	S	S	S
Headlamps-on reminder tone	S	S	S	S
Inside day/night rearview mirror	S	S	S	S
Intermittent wipers, fixed	—	S	S	S
Lighter/power socket	S	S	S	S
Power door locks	—	—	O	O
Rear-window defogger	O	O	O	O
Rear-window wiper/washer*	O	O	—	—
Scotchgard™ Fabric Protector (on seats)†	S	S	S	S
Tachometer	O**	O	O	O
Trip odometer	O	S	S	S

Seats

High-back reclining front bucket seats with integral head restraints	S	S	S	S
Easy-entry front-passenger seat	S	S	—	—
Full-folding rear seat	S	S	S	—
Passenger seat-back pocket	—	S	—	S
Split-folding rear seat	—	—	—	S

S — Standard. O — Optional. *Requires optional rear-window defogger. †Includes cloth door trim on LSi Sedan. **Includes trip odometer.

Delco Electronics Sound Systems

NOTE: All Geo Metro sound systems include a Delco electronically tuned AM/FM stereo with seek feature, digital clock and four speakers.

AM/FM stereo	O	O	O	O
AM/FM stereo with cassette player and Automatic Tone Control	O	O	O	O
AM/FM stereo with cassette and compact disc players and Automatic Tone Control	—	O	O	O

Power Teams/Chassis	Metro Coupe	LSi Coupe	Metro Sedan	LSi Sedan
1.0 Liter L3 engine with Electronic Fuel Injection	S	S*	—	—
1.3 Liter L4 engine with Electronic Fuel Injection	O	O	S	S
3-speed automatic transmission	—	O†	O	O
5-speed manual transmission with 4th- and 5th-gear overdrive	S	S	S	S
Brake/transmission shift interlock (with optional automatic transmission)	—	S	S	S
Four-wheel independent suspension	S	S	S	S
Power front disc/rear drum brakes with wear indicators	S	S	S	S
Power steering	—	—	O	O
Stainless-steel muffler and tailpipe	S	S	S	S
Rack-and-pinion steering	S	S	S	S
Anti-lock brakes (ABS), 4-wheel	O	O	O	O

On Board Diagnostics II

OBD II — a new standard feature on every 1996 Geo — constantly monitors the emissions system, and is able to detect a problem before it can seriously affect vehicle performance.

Wheels/Tires

13" styled-steel wheels with center caps	S	—	—	—
13" 3-spoke full wheel covers	O	—	S	—
13" 7-spoke full wheel covers	—	S	—	S
P155/80R-13 all-season steel-belted radial tires	S	S	S	S

S — Standard. O — Optional. *With 5-speed manual transmission. †Requires optional 1.3 Liter L4 engine.

Trailerling

Trailerling with Geo Metro is not recommended

Data

Exterior Dimensions (in.)	Coupe	Sedan
Wheelbase	93.1	93.1
Length (overall)	149.4	164.0
Width (overall)	62.6	62.6
Height (overall)	54.7	55.4

Interior Dimensions (in.)

Head room—front	39.1	39.3
Head room—rear	36.0	37.3
Leg room—front	42.5	42.5
Leg room—rear	32.8	32.2
Shoulder room—front	48.9	49.0
Shoulder room—rear	48.9	48.3
Hip room—front	47.2	46.9
Hip room—rear	45.9	42.9

Capacities

Passenger capacity	4	4
Cargo capacity—with rear seat up (cu. ft.)	8.4	10.3
Cargo capacity—with rear seat down (cu. ft.)	22.5	—
Fuel tank (gal.)	10.6	10.6

Colors And Trim.

Exterior Colors	Gray Interior — All Models			
	Metro Coupe	LSi Coupe	Metro Sedan	LSi Sedan
Black Licorice	■	■	■	■
Scuba Blue Metallic		■	■	■
Super Grape Metallic		■		
Slate Green Metallic	■	■	■	■
Woodland Green Metallic		■	■	■
Brilliant Red Metallic		■	■	■
Wildfire Red	■	■		
Silver Sage Metallic		■	■	■
White	■	■	■	■

■ Available.



White



Silver Sage Metallic*



Wildfire Red*



Brilliant Red Metallic*

Gray with Blue/Green (Metro Coupe and Sedan)



Woodland Green Metallic*



Slate Green Metallic*

Gray (Metro LSi Coupe and Sedan)



Super Grape Metallic*



Scuba Blue Metallic*



Black Licorice*

Gray with Red/Purple (Metro Coupe and Sedan)

*Base-coat/clear-coat finish.

Additional Information.

Customer Assistance Center.

The Chevrolet Customer Assistance Center has a special toll-free number (1-800-222-1020). It puts you in contact with experts who can handle any product or service questions you may have with your new Geo.

GM Protection Plan.

The available GM Protection Plan offers service protection in addition to that provided by GM's new-vehicle limited warranty. Ask your dealer about it. Coverage available only in the U.S. and Canada.

Engines.

Geo vehicles are equipped with engines produced by different operating units of GM, its subsidiaries or suppliers to GM worldwide.

Corrosion Protection.

Geo vehicles are designed and built to resist corrosion. All body sheet-metal components are warranted against rust-through corrosion for 6 years or 100,000 miles (whichever comes first). Application of additional rust-inhibiting materials is not required under the corrosion coverage, and none is recommended. See your Chevrolet/Geo dealer for terms of this limited warranty.

Assembly.

Geo vehicles are assembled by different operating units of General Motors, its subsidiaries or suppliers to GM worldwide. Geo vehicles incorporate thousands of components produced by different operating units of GM, its subsidiaries or suppliers to GM worldwide. We sometimes find it necessary to produce Geo vehicles with different or differently sourced components than originally scheduled. All such components have been approved for use in Geo vehicles and will provide the quality performance associated with the Geo name. Since some options may be unavailable when your vehicle is assembled, we suggest that you verify that your vehicle includes the equipment you ordered or, if there are changes, that they are acceptable to you.

Updated Service Information.

Chevrolet regularly sends its dealers useful service bulletins about Geo products. Chevrolet monitors product performance in the field. We then prepare bulletins for servicing our products better. Now you can get these bulletins, too. Ask your dealer. To get ordering information, call toll free: 1-800-551-4123.

Important: A Word About This Catalog.

We have tried to make this catalog as comprehensive and factual as possible. We reserve the right, however, to make changes at any time, without notice, in prices, colors, materials, equipment, specifications, models and availability. Since some information may have been updated since the time of printing, please check with your Chevrolet/Geo dealer for complete details.

Geo



Geo Tree Program.

Since 1989, Chevrolet/Geo in partnership with over 60 non-profit organizations, has been responsible for the planting and maintaining of 750,000 trees; one tree planted on behalf of each purchaser of a new Geo. The program also supports citizen involvement and environment education. To learn more or find out how to become involved, call 1-800-TREE-Geo.



Turn Plastic Into Steel With The GM Card®.

The GM MasterCard®, with no annual fee, is the revolutionary financial vehicle specifically designed to help put you behind the wheel. Every time you use it, GM will credit 5% of your purchase toward buying or leasing the GM car or truck of your dreams. It could mean saving hundreds, even thousands of dollars over and above any other discounts or rebates. Call 1-800-8GM-CARD for more information, including annual limits and restrictions.



SMARTLEASE by GMAC makes it easy to enjoy the excellence of Geo Metro. With SMARTLEASE, qualified customers can be approved in about one hour, and you enjoy low SMARTLEASE monthly payments. Plus, SMARTLEASE offers you choices at the end of your lease. You can either buy your Metro at a price guaranteed up front, or return your vehicle with no other obligations — assuming the terms of the lease have been met. For more information about SMARTLEASE or any of the other quality GMAC financing options, see your Chevrolet/Geo dealer or call 1-800-32-SMART.



General Motors, GM, the GM Emblem, Chevrolet, Geo, the Geo grille Emblem, Prizm and Tracker are registered trademarks and Chevy and Metro are trademarks of the General Motors Corporation. Scotchgard is a trademark of the 3M Corporation. GMAC and SMARTLEASE are registered trademarks of the General Motors Acceptance Corporation. ©1995 General Motors Corporation. All rights reserved. A note about air bags: Always wear safety belts, even with air bags.

Litho in U.S.A.

August 1995



The New Site For Car Brochures



DEZO'S GARAGE