

2020 Hyundai

# NEXO





NEXO Limited in Copper Metallic

## Its zero carbon footprint makes quite an impression.

With an EPA-estimated range of up to 380 miles from five minutes or less of refueling, the five-passenger Hyundai NEXO crossover SUV sets a new benchmark for alternative fuel vehicles.<sup>1</sup> NEXO uses hydrogen fuel and oxygen from the ambient air to create the electricity powering its 161-hp electric motor. The only emission? A few droplets of water.

Press the accelerator pedal, and your NEXO responds in invigorating fashion with a powerful thrust of torque (without the noise of a gas engine, it's also remarkably quiet). To help keep you centered in your lane of travel, Lane Following Assist – one of an array of Hyundai SmartSense technologies onboard – automatically lends a hand with subtle steering corrections.<sup>2</sup> Need to change lanes? NEXO Limited's Blind-Spot View Monitor displays wide-angle views of your blind spots on the instrument cluster, allowing you to see more than you would in the rearview mirror alone.<sup>3</sup>

Even when it's driverless, NEXO delights with next-generation technologies like Remote Smart Parking Assist, which can search for – and help drive into or out of – parking spaces remotely.<sup>4</sup> You'll also have a choice of how you go alternative: NEXO Blue or NEXO Limited.



Shift-by-Wire push-button gear selector  
Blind-Spot View Monitor



LED headlights  
12.3" touchscreen display with energy flow chart



### Standard SmartSense Safety Technologies



High Beam Assist



Blind-Spot Collision Warning



Forward Collision-Avoidance Assist



Rear Cross-Traffic Collision Warning



Lane Following Assist



2019 Hyundai NEXO  
Top Safety Pick+ for vehicles  
built after June 2019<sup>5</sup>

<sup>1</sup>NEXO Blue EPA estimate for comparison only. Your actual mileage will vary with options, driving conditions, driving habits and the vehicle's condition. Fueling time will vary based on ambient temperature, hydrogen fueling pressure, current fill level and other factors. <sup>2</sup>Lane Following Assist (LFA), when actively engaged with Smart Cruise Control or Highway Driving Assist, can help keep the vehicle centered in its lane only when the lane markings are clearly visible on the road. LFA will not work under all circumstances and will not prevent loss of control. LFA is a supplemental assist, and does not replace the need for extreme care and attention by the driver. See Owner's Manual for details. <sup>3</sup>Blind-Spot View Monitor (BVM) assists the driver in changing lanes by providing a live view of the blind spots on either side of the vehicle and an audible alert if another vehicle is detected. Turn signal must be activated, and other system limitations apply. Do not rely exclusively on BVM. It is the driver's responsibility to be aware of the surroundings and ensure it is clear before changing lanes or directions. See Owner's Manual for more information. <sup>4</sup>Remote Smart Parking Assist can autonomously park the vehicle. However, several factors can reduce the performance of this feature. The parking sensors may not function correctly if one or more of the parking sensors is damaged, dirty or covered, or if weather conditions (heavy rain, snow or fog) are interfering with sensor operation. Always inspect the parking area with your own eyes. <sup>5</sup>To qualify for 2019 TOP SAFETY PICK+, a vehicle must earn Good ratings in the driver-side small overlap front, passenger-side small overlap front, moderate overlap front, side, roof strength and head restraint tests. It also must earn an Advanced or Superior rating for front crash prevention and a Good headlight rating. For details visit [www.iihs.org](http://www.iihs.org).

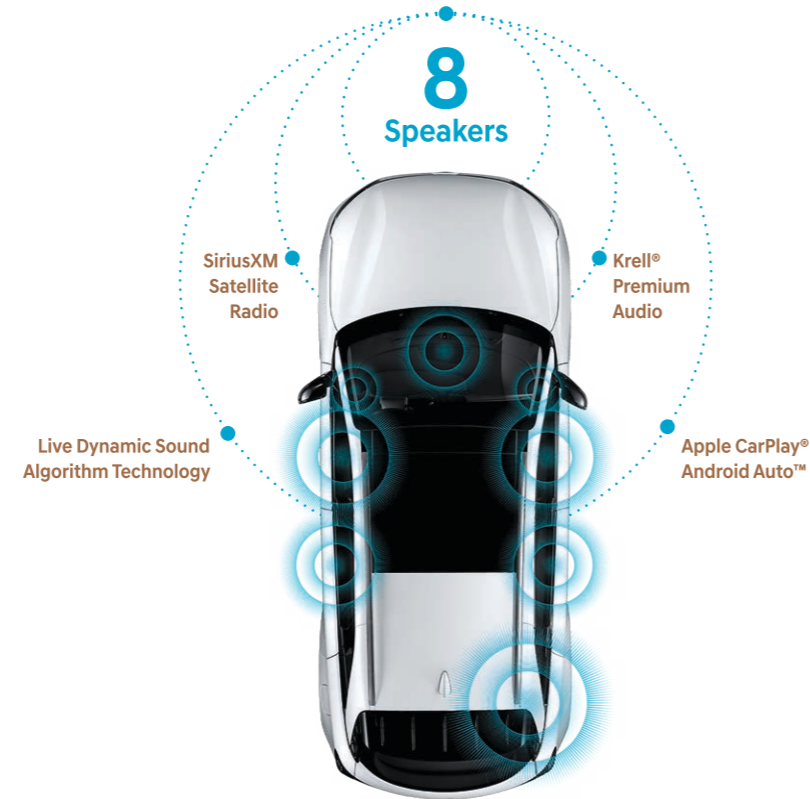
# High-strength steel on the outside. A higher form of intelligence on the inside.

NEXO's stylish body is wrapped around a structure formed using advanced high-strength steel. In the event of a collision, the structure's strength helps preserve the integrity of your passenger cabin. Inside, advanced bio-materials form the eco-friendly NEXO interior. The headliner is woven from bamboo, the carpet fibers are spun from sugarcane and the interior trim's color dyes are extracted from soybeans and canola oil.

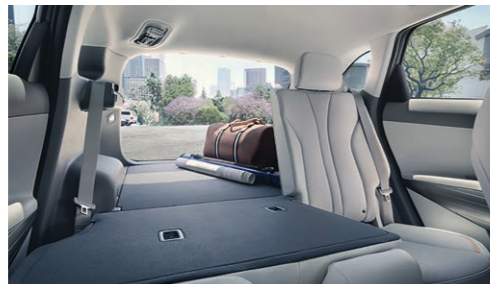
Because its interior doesn't need to make room for large electric vehicle battery packs, NEXO also features generous amounts of front and rear legroom. Behind the rear seats, you'll have plenty of space to load up to your liking – NEXO has almost double the cargo volume of Toyota Mirai! Up front, you'll enjoy the comfort of an 8-way power driver seat with power lumbar and 6-way power passenger seat (both heated), automatic temperature controls and available features like ventilated front seats and a wide power tilt-and-slide sunroof.

NEXO comes standard with a navigation system displayed on one of the largest screens offered in any type of vehicle – a 12.3" touchscreen display typically reserved for expensive European luxury sedans like the Porsche Panamera, BMW 7 Series and Lexus LS. By comparison, Toyota Mirai comes with a 7" touchscreen, and Honda Clarity FCV comes with an 8" touchscreen!

NEXO Limited is also the first Hyundai to offer a Krell® premium audio system. With an 8-channel amplifier as its centerpiece, it includes the deep bass of an 8" subwoofer and Live Dynamic sound algorithm technology that restores the fullness lost in compressed digital music. You'll find plenty to enjoy on long road trips made possible by an estimated driving range of up to 380 miles.



Rearview camera with parking guidelines



60/40 split-folding rear seats



Remote Smart Parking Assist



Hands-free smart liftgate with height adjustment



Based on comparison of specifications on manufacturer websites.

# With Hyundai Blue Link, you'll make all the smart moves.

Hyundai's Blue Link<sup>®</sup> connected car technology transforms your NEXO into an extension of your highly connected life.<sup>1</sup> It starts with Blue Link Connected Care. Complimentary for your first 3 years, it offers exceptional peace of mind with 24/7 access to Enhanced Roadside Assistance, SOS Emergency Assistance,<sup>2</sup> Monthly Vehicle Health Reports and more.

If you're like most Hyundai owners, the Blue Link feature you'll use most is Remote Access. Using our MyHyundai app on your smartphone or smartwatch, or your Amazon Echo<sup>®</sup> or Google Home<sup>™</sup> device,<sup>3</sup> you can remotely start your NEXO and activate the climate controls, lock/unlock the doors or locate your vehicle in a crowded parking lot.<sup>4</sup>

Before entering your car, Blue Link Guidance lets you use your smartphone to search, download and send addresses and points of interest – even the location of nearby hydrogen fueling stations – directly to your NEXO's navigation system.<sup>5</sup>

Of course, Blue Link is just one of the ways NEXO makes life easier. With Android Auto<sup>™</sup> and Apple CarPlay<sup>®</sup>, NEXO connects to your compatible smartphone and displays your familiar icons, apps, playlists and content on a very wide 12.3" touchscreen display.<sup>6</sup> NEXO also offers the convenience of wireless device charging.<sup>7</sup> Like Apple CarPlay and Android Auto, it's standard on NEXO. And like NEXO itself, it'll quickly recharge your compatible devices to keep you on the move.



Amazon Echo<sup>®</sup> integration



Wireless device charging

<sup>1</sup>2020 Hyundai vehicles include 3 years of the Blue Link Connected Care, Remote and Guidance packages. All trials require an active Blue Link subscription agreement subject to the Connected Services Terms and Conditions. Three-year term starts from the new vehicle date-of-first-use, is available for new vehicle purchases and leases, and is transferable to subsequent owners subject to the Terms and Conditions. Only use Blue Link and corresponding devices when safe to do so. Cellular and GPS coverage is required. Features, specifications and fees are subject to change. For more on details and limitations, visit [hyundai.com](http://hyundai.com) or your authorized Hyundai dealer. <sup>2</sup>Blue Link agents will contact existing emergency service responders. <sup>3</sup>Requires active Blue Link subscription and Blue Link Remote package. Amazon, Alexa and all related logos and motion marks are trademarks of Amazon.com, Inc. or its affiliates. Google Assistant and Google Home are trademarks of Google Inc. <sup>4</sup>Smartphone GPS location must be within a 1-mile radius of the vehicle's location to display searched location. <sup>5</sup>Requires Blue Link Guidance package. <sup>6</sup>Apple CarPlay works with iPhone 5s, iPhone 5c, iPhone 5 and later models running the latest version of iOS 7 and above. Apple is a registered trademark of Apple Inc. Android Auto works with smartphones running on Android 5.0 Lollipop and higher. Android, Android Auto, Google Play and other marks are trademarks of Google Inc. <sup>7</sup>Qi wireless charging function is based on smartphone compatibility and/or specific accessory cases. <sup>8</sup>Requires active Blue Link subscription and Blue Link Remote package.



### Automatic Emergency Assistance



Blue Link Connected Care offers 24/7 SOS Emergency Assistance and Automatic Collision Notification that calls for help if you're in an accident where airbags deploy.

### On-Demand Diagnostics



Run vehicle diagnostics from your NEXO's touchscreen, report issues at the press of a button and receive Monthly Vehicle Health Reports or maintenance reminders by email.

### Remote Seat Heating/Cooling



The NEXO is the first Hyundai vehicle that allows you to remotely activate its seat heating and cooling features using the MyHyundai app on your smartphone.

### Hydrogen Dashboard



Blue Link for NEXO lets you check your fuel level and real-time range, and helps locate hydrogen stations when it's time to refuel.<sup>8</sup>

### Car Finder



Our Car Finder smartphone feature lets you navigate your way through crowded parking lots back to your NEXO.

### Remote Controls



Use your smartphone, home assistant or wearable device to remotely start your Hyundai's engine, unlock the doors, set the cabin temperature and more.

## Wheels

Blue 17" Alloy Wheel



Limited 19" Alloy Wheel



## NEXO Blue



### Hydrogen Fuel Cell

hp **161**

lb-ft **291**

### Popular Features

Forward Collision-Avoidance Assist

Blind-Spot Collision Warning

Lane Following Assist

12.3" LCD touchscreen navigation

Apple CarPlay<sup>®</sup> and Android Auto<sup>™</sup>

Wireless device charging

Smart Cruise Control with Stop & Go

## NEXO Limited



### Hydrogen Fuel Cell

hp **161**

lb-ft **291**

### Popular Features

Power tilt-and-slide wide sunroof

Remote Smart Parking Assist

Surround View Monitor

Blind-Spot View Monitor

Krell<sup>®</sup> premium audio system with 8 speakers and Live Dynamic sound algorithm technology

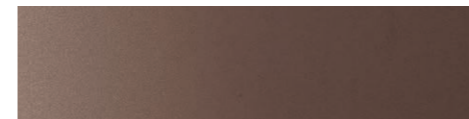
Hands-free smart liftgate with auto open

## Exterior / Interior Colors

White Pearl



Copper Metallic



Dusk Blue



Stone Gray Bio-Based Leatherette



Cocoon Silver



Meteor Blue Bio-Based Leatherette



NEXO	Blue	Limited
<b>Power &amp; Handling</b>		
Zero-emission hydrogen fuel cell powertrain	•	•
95 kW fuel cell and 40 kW (1.56 kWh) lithium-ion polymer battery	•	•
120 kW (161 hp) permanent magnet electric motor with 291 lb-ft of torque	•	•
14.0 lbs hydrogen tank capacity	•	•
Single-speed automatic transmission	•	•
Shift-by-Wire push-button drive selector	•	•
Front Wheel Drive	•	•
Multi-link rear suspension	•	•
Regenerative brake level control paddles	•	•
<b>Exterior Features</b>		
LED headlights/taillights and Daytime Running Lights	•	•
Power-folding, heated side mirrors with LED turn signal indicators	•	•
Bodycolor flush auto-retracting door handles	•	•
Automatic on/off headlights	•	•
Rear spoiler with hidden rear window wiper	•	•
Power tilt-and-slide wide sunroof	–	•
Roof side rails	–	•
Solar control front glass and privacy rear glass	•	•
Rain-sensing windshield wipers	–	•
Hands-free smart liftgate with auto open	–	•
<b>Interior &amp; Convenience Features</b>		
Proximity Key entry with push button start	•	•
7" LCD multi-information display	•	•
Tilt-and-telescopic steering wheel with audio, Bluetooth <sup>®</sup> phone and cruise controls	•	•
Automatic temperature control	•	•
Floor console-mounted rear vents	•	•
Remote Smart Parking Assist	–	•
Electronic Parking Brake with Automatic Vehicle Hold	•	•
Leather-wrapped steering wheel	•	•
Bio-based leatherette seating	•	•
8-way power driver seat with power lumbar support	•	•
6-way power front passenger seat	•	•
Heated front seats	•	•
Ventilated front seats	–	•
Heated steering wheel	–	•
60/40 split-folding rear seats with adjustable head restraints	•	•
Rear-seat center armrest with dual cupholders	•	•
Power windows with front auto-down/up	•	•
Auto-dimming rearview mirror with HomeLink <sup>®</sup>	•	•
Cargo cover	•	•

NEXO	Blue	Limited
<b>Advanced Safety</b>		
Forward Collision-Avoidance Assist	•	•
Blind-Spot Collision Warning	•	•
Rearview camera with parking guidelines	•	•
Rear Cross-Traffic Collision Warning	•	•
Front and rear parking sensors	–	•
Lane Following Assist	•	•
Surround View Monitor	–	•
Blind-Spot View Monitor	–	•
Driver Attention Warning	•	•
High Beam Assist	•	•
Smart Cruise Control with Stop & Go	•	•
<b>Audio &amp; Connected Car Technology</b>		
12.3" high-resolution color touchscreen navigation	•	•
Android Auto <sup>™</sup> and Apple CarPlay <sup>®</sup>	•	•
SiriusXM <sup>®</sup> Satellite Radio and HD Radio <sup>™</sup>	•	•
Blue Link <sup>®</sup> Connected Car System (3 years complimentary)	•	•
Wireless device charging	•	•
Krell <sup>®</sup> premium audio system with 8 speakers and Live Dynamic sound algorithm technology	–	•
Dual front USB charge ports	•	•
	• Standard	– Not Available
<b>NEXO</b>	<b>Blue</b>	<b>Limited</b>
<b>EPA MPGe Estimates</b>		
City	65 MPGe	59 MPGe
Highway	58 MPGe	54 MPGe
Combined	61 MPGe	57 MPGe
Maximum Driving Range	380 miles	354 miles
MPGe is the EPA-equivalent of gasoline fuel efficiency for electric mode operation. Use for comparison purposes only. Mileage may vary depending on driving conditions, driving habits, vehicle condition, the age/condition of the lithium-ion polymer battery and other factors.		
<b>Exterior / Interior Dimensions</b>		
Wheelbase		109.8 in
Overall Length		183.9 in
Overall Width		73.2 in
Overall Height (with roof side rails)		64.2 (64.6) in
Headroom – front (with sunroof) / rear		39.4 (38.0) / 38.0 in
Legroom – front / rear		41.5 / 38.6 in
Shoulder Room – front / rear		57.2 / 55.5 in
Total Interior Volume		130.9 cu ft
Passenger Interior Volume		101.3 cu ft
Cargo Capacity – rear seats up / folded down		29.6 / 56.5 cu ft



Hyundai Hope On Wheels®

Helping Kids Fight Cancer Since 1998



## Hope makes every Hyundai better.

Each time we sell a Hyundai, a portion goes to Hyundai Hope On Wheels® to help find a cure for childhood cancer. Over the last 21 years, Hyundai Hope On Wheels has donated more than \$160 million. Hope is our greatest feature. And it comes standard on every Hyundai. For more information, please visit [HyundaiHopeOnWheels.org](http://HyundaiHopeOnWheels.org).



## America's Best Warranty<sup>3</sup>

**POWERTRAIN LIMITED WARRANTY**

**10** YEARS  
100,000 MILES

**NEW VEHICLE LIMITED WARRANTY**

**5** YEARS  
60,000 MILES

**ANTI-PERFORATION WARRANTY**

**7** YEARS  
UNLIMITED MILES

**24/7 ROADSIDE ASSISTANCE**

**5** YEARS  
UNLIMITED MILES

**Ask your Hyundai dealer about these NEXO benefits:**

- 3 years/\$13,000 of complimentary fuel<sup>1</sup>
- Free vehicle rentals<sup>2</sup>
- Clean fuel rebate

HYUNDAI

Assurance

[HYUNDAIASSURANCE.COM](http://HYUNDAIASSURANCE.COM)

Our commitment to Hyundai owners doesn't end with the transfer of keys. Wherever the road takes you, we've got your back with Hyundai Assurance, an umbrella of services and benefits that includes America's Best Warranty, 24/7 Roadside Assistance, innovative safety and car care features...and more.

<sup>1</sup>Purchasers or lessees of a new Hyundai NEXO can receive hydrogen fueling cards with a combined maximum value of \$13,000 to be used during the first 3 years of ownership or lease. Debit card terms and conditions apply. NEXO Card is non-transferable and will only function at certified retail hydrogen fueling stations in California. See participating Hyundai dealer or [HyundaiUSA.com](http://HyundaiUSA.com) for details. <sup>2</sup>Purchasers or lessees of a new Hyundai NEXO will receive a non-transferable 21-day car rental voucher from Enterprise Rent-A-Car valid for 3 years from the date of vehicle purchase or lease subject to Enterprise's terms and conditions. See participating Hyundai dealer or [HyundaiUSA.com](http://HyundaiUSA.com) for details. <sup>3</sup>See dealer for LIMITED WARRANTY details. Fuel economy estimated by EPA for comparison only. Mileage may vary. While the information contained in this brochure was correct at the time of printing, specifications and equipment can change. Feature comparisons based on competitor information available at the time of printing. No warranty or guarantee is being extended in this brochure, and Hyundai reserves the right to change product specifications or equipment at any time without incurring obligations. Some vehicles shown with optional equipment. Specifications apply to U.S. vehicles only. Please contact your Hyundai dealer for current vehicle specifications. As part of Hyundai's commitment to a responsible environment, this brochure was printed using paper certified by the Forest Stewardship Council®. FSC® certification helps ensure that the highest social and environmental standards are met in the making of the paper we use, contributing to conservation, responsible management and community-level benefits for people near the forests.

