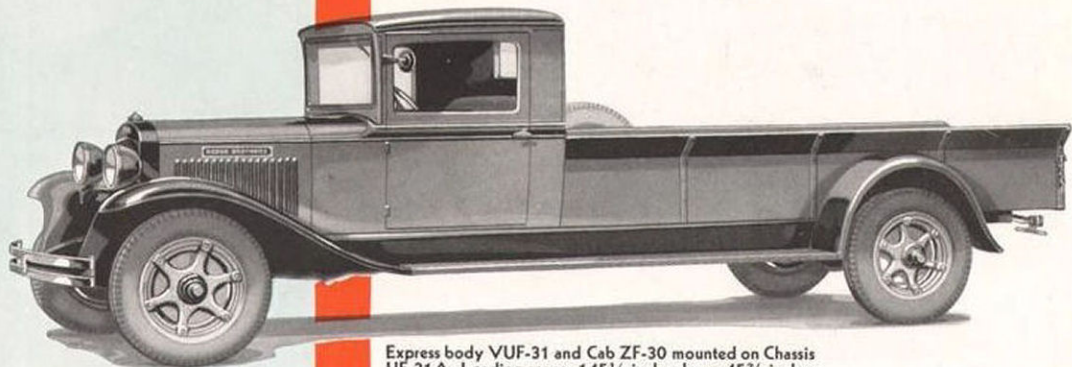


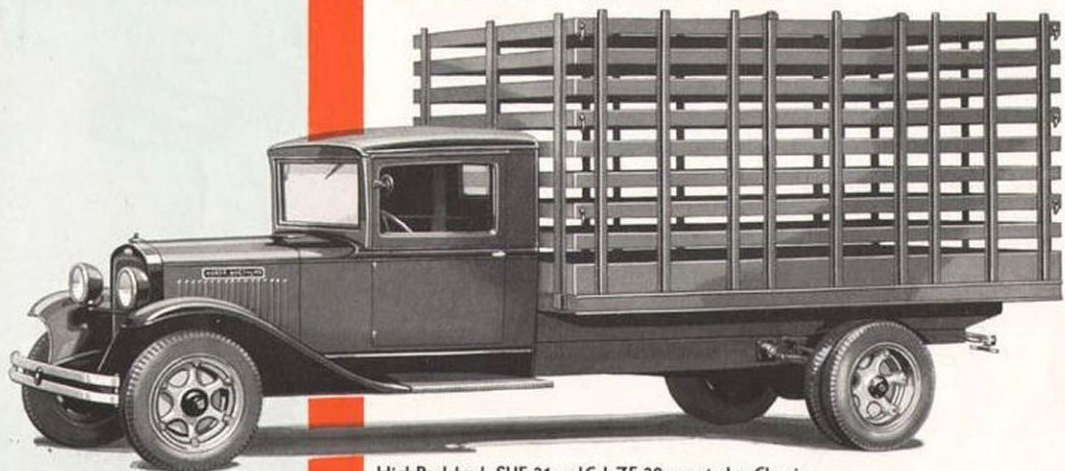


DODGE BROTHERS TRUCKS

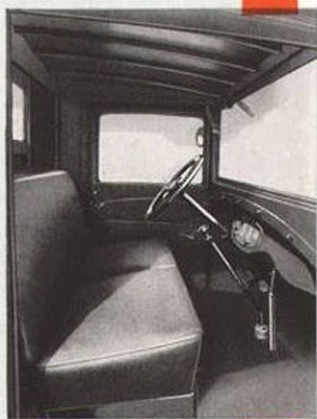
1 1/2 T O N
M O D E L U F 31



Express body VUF-31 and Cab ZF-30 mounted on Chassis UF-31A. Loading space: 145½ inches long, 45⅝ inches wide. Sides 13¼ inches high to bottom of flare boards.



High Rack body SUF-31 and Cab ZF-30 mounted on Chassis UF-31D. Loading space: 144⅝ inches long, 78 inches wide. Rack sides 66¾ inches high.



DODGE BROTHERS standard bodies have greater strength and utility. Each body is especially designed by Dodge Brothers to fit the UF-31 chassis. All are carefully built of highest grade materials, steel replacing wood in many places to give greater strength and lighter weight. Loading spaces are low to the ground and ample in capacity. Interiors, reinforced and protected by metal panels and striping, are neat and trim. Comfort and convenience have been provided for the driver — all controls within easy reach — well padded cushions with deep, resilient springs. Dodge cabs and bodies are adaptable to your business and offer you, because of Dodge Brothers higher standards of quality, greater value.

Specifications

MODEL UF-31

Chassis Model No.	W. B. In.	Max. Allow. Payload Lbs.	Body and Cab Allowance Lbs.	TIRE SIZES				Total Allowable Wgt. Lbs.		Chassis Road Weight Lbs.	Stripped Chassis Weight Lbs.
				Front	Ply	Rear	Ply	Front	Rear		
UF-31A	165	1875	1400	6.00/20	6	32 x 6	8	1925	4275	9925	2757
UF-31B	165	3725	1400	6.00/20	6	6.00/20D	6	2000	6150	3025	2849
UF-31C	165	3700	1400	30 x 5	8	34 x 7	10	2000	6150	3050	2868
UF-31D	165	3775	1400	30 x 5	8	30 x 5D	8	2025	6200	3050	2881
UF-31E	165	1775	1400	7.00/20	8	7.00/20	8	1950	4175	2950	2777
UF-31F	165	2400	1400	30 x 5	8	32 x 6	10	1950	4850	3000	2814

Note: "D" after rear tire sizes indicates dual tires.

All truck chassis of this model are covered by the manufacturer's warranty where the gross laden weight, front and rear, does not exceed the maximum shown above and limitations under this maximum are due to tire capacities of the combinations shown.

Body Length—Loading space Dodge Brothers standard bodies: Panel—155"; Stake—144½"; Express—143½"; Platform—146¼"; High Rack—144½".

Allowable Speed—40 miles per hour.

Road Clearance—With tire combination A—8¼"; B—9"; C—9¼"; D—9¼"; E—9½"; F—9¼".

Turning Radius—Right 24' 3½". Left 28' 5".

Engine—Dodge Brothers standard 4-cylinder truck engine; bore 3⅝"; stroke 4¼"; N.A.C.C. rating 21.02 horsepower; maximum developed horsepower 48 at 2800 R.P.M. 124 foot pounds torque at 1800 R.P.M. Unit power plant. Force feed lubrication. Centrifugal water pump. 6-volt 2-unit electrical system.

Fuel System—Pump feed; 15 U. S. gal. (12½ imp. gal.—56.7 liters) capacity fuel tank under driver's seat. Plain tube up-draft carburetor. Gasoline filter.

Transmission—Standard S.A.E. shift, selective sliding gear type, 4 speeds forward and 1 reverse. Provision for power take-off.

Clutch—10" dry single plate; ball-bearing release.

Frame—One-piece pressed steel channels 8" maximum depth, 11/64" thick, 2¾" maximum flange width. 7 cross members including rear motor support.

Wheels—Malleable iron spoke type, 6 spoke front and rear. Demountable rims.

Front Axle—Elliott type, I-beam section; ball bearings at steering pivots. Adjustable tapered roller bearings at wheels.

Steering Gear—Semi-irreversible, worm and sector type adjustable for wear.

Rear Axle—Full floating enclosed in electric steel banjo housing with chrome nickel steel tubes, electric welded to housing. Spiral bevel gear drive. Gears and shafts of chrome nickel alloy steel. 9 roller bearings. Gear ratio 5.667:1 (6.857 ratio may be obtained through the Special Equipment Division.)

Brakes—Foot, four wheel hydraulic, internal expanding; cast alloy brake drums. Drum diameter 14" front, 16" rear; lining width 1¾" front, 2¼" rear. Total brake lining area 229 sq. in. Hand, propeller shaft type, external contracting. Drum diameter 8", lining width 2". Total parking brake lining area 49.25 sq. in.

Propeller Shaft—Two-piece tubular steel 2¼" diameter front and 3" diameter rear. Supported in center by ball bearing with flexible mounting.

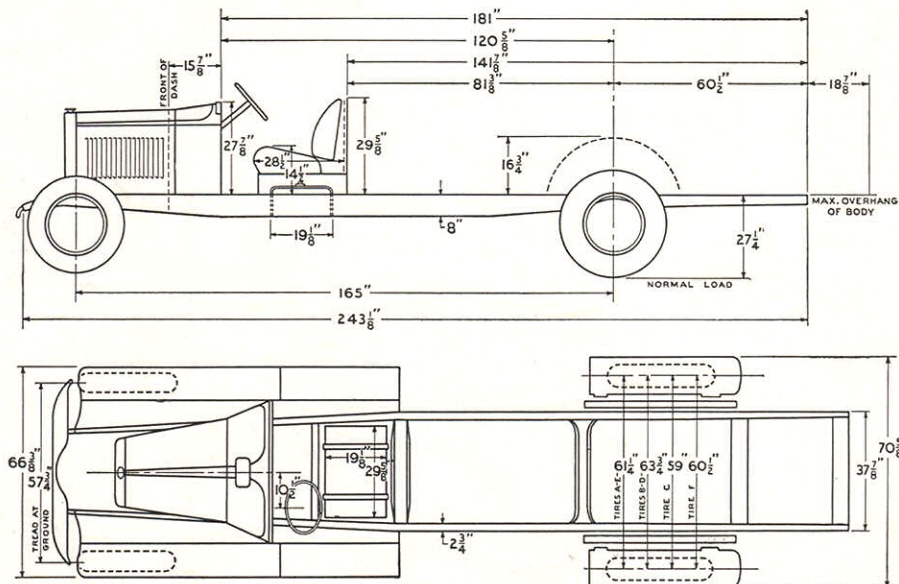
Universal Joints—3 cross and trunion, centrifugal oil type.

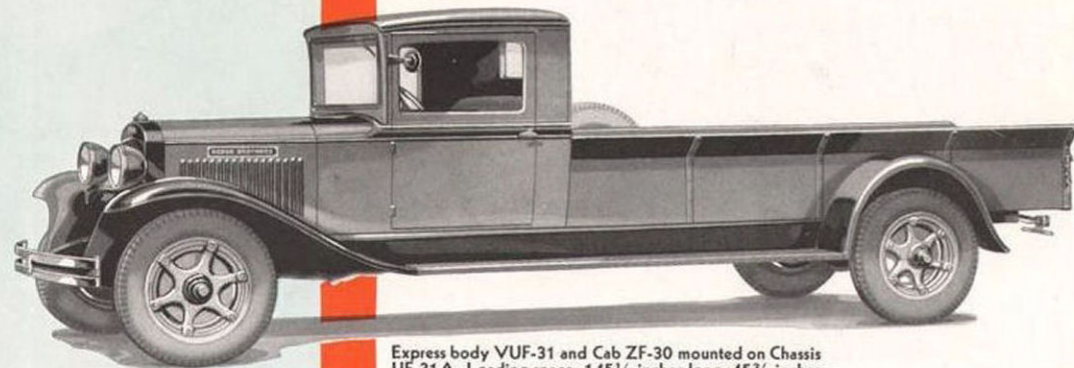
Springs—Semi-elliptic, alloy steel, all leaves. Front length 39"; width 2"; 8 leaves. Rear (Stake, Platform, High Rack and chassis) 5 stage progressive type; length 48", width 2½"; 17 leaves including 5 in auxiliary spring. Panel and Express—semi-elliptic length 48", width 2½"; 10 leaves.

Equipment—All-steel flat-faced cowl with instrument board and instruments. Cowl ventilator. Black enamel radiator shell, and chromium plated radiator filler cap. Crown sheet metal fenders, front, short running boards and splash shields to back of cab. (Front and rear fenders with splash shield and long running boards on Panel.) Tire carrier; spare rim; electric horn; electric lights; two electric headlamps depressed beam type. Combination tail and stop lamp. Instrument board light. Crankcase ventilator. Thermostat; electric starter; speedometer; oil pressure gauge; ammeter; locking ignition switch; carburetor choke button; license brackets. Tool kit. (Front and rear bumpers at extra cost.)

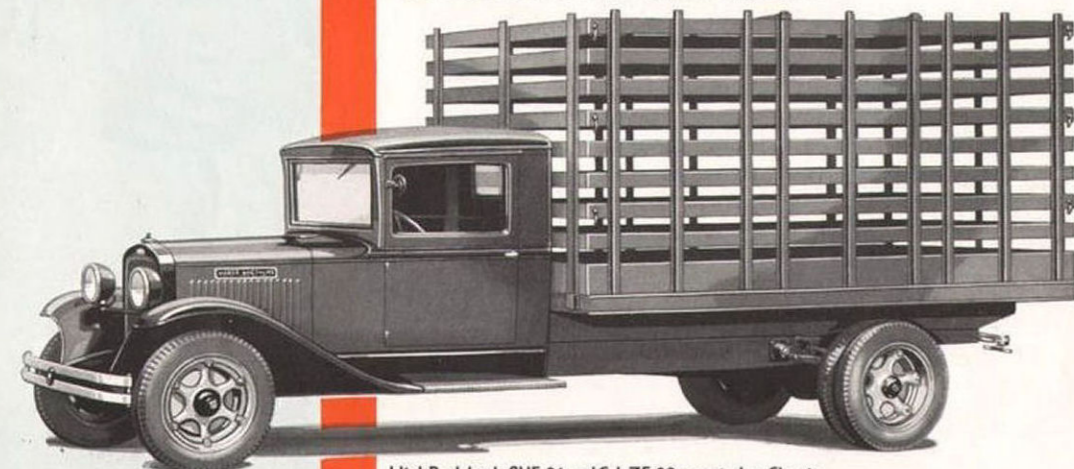
Tire combinations furnished with standard bodies—Stake, Platform and High Rack: A, B, D, E and F. Panel and Express: A, E and F.

Specifications Subject to Change Without Notice





Express body VUF-31 and Cab ZF-30 mounted on Chassis UF-31A. Loading space: 145½ inches long, 45¾ inches wide. Sides 13¼ inches high to bottom of flare boards.



High Rack body SUF-31 and Cab ZF-30 mounted on Chassis UF-31D. Loading space: 144¾ inches long, 78 inches wide. Rack sides 66¾ inches high.



DODGE BROTHERS standard bodies have greater strength and utility. Each body is especially designed by Dodge Brothers to fit the UF-31 chassis. All are carefully built of highest grade materials, steel replacing wood in many places to give greater strength and lighter weight. Loading spaces are low to the ground and ample in capacity. Interiors, reinforced and protected by metal panels and striping, are neat and trim. Comfort and convenience have been provided for the driver — all controls within easy reach — well padded cushions with deep, resilient springs. Dodge cabs and bodies are adaptable to your business and offer you, because of Dodge Brothers higher standards of quality, greater value.

Specifications

MODEL UF-31

Chassis Model No.	W. B. In.	Max. Allow. Payload Lbs.	Body and Cab Allowance. Lbs.	TIRE SIZES				Total Allowable Wgt. Lbs.		Chassis Road Weight Lbs.	Stripped Chassis Weight Lbs.
				Front	Ply	Rear	Ply	Front	Rear		
UF-31A	165	1875	1400	6.00/20	6	32 x 6	8	1925	4275	2925	2757
UF-31B	165	3725	1400	6.00/20	6	6.00/20D	6	2000	6150	3025	2849
UF-31C	165	3700	1400	30 x 5	8	34 x 7	10	2000	6150	3050	2868
UF-31D	165	3775	1400	30 x 5	8	30 x 5D	8	2025	6200	3050	2881
UF-31E	165	1775	1400	7.00/20	8	7.00/20	8	1950	4175	2950	2777
UF-31F	165	2400	1400	30 x 5	8	32 x 6	10	1950	4850	3000	2814

Note: "D" after rear tire sizes indicates dual tires.

All truck chassis of this model are covered by the manufacturer's warranty where the gross laden weight, front and rear, does not exceed the maximum shown above and limitations under this maximum are due to tire capacities of the combinations shown.

Body Length—Loading space Dodge Brothers standard bodies: Panel—155"; Stake—144¾"; Express—145½"; Platform—146¼"; High Rack—144¾".

Allowable Speed—40 miles per hour.

Road Clearance—With tire combination A—8¼"; B—9"; C—9¼"; D—9¼"; E—9½"; F—9¼".

Turning Radius—Right 24' 3½". Left 28' 5".

Engine—Dodge Brothers standard 4-cylinder truck engine; bore 3½"; stroke 4¾"; N.A.C.C. rating 21.02 horsepower; maximum developed horsepower 48 at 2800 R.P.M. 124 foot pounds torque at 1200 R.P.M. Unit power plant. Force feed lubrication. Centrifugal water pump. 6-volt 2-unit electrical system.

Fuel System—Pump feed; 15 U. S. gal. (12½ Imp. gal.—56.7 liters) capacity fuel tank under driver's seat. Plain tube up-draft carburetor. Gasoline filter.

Transmission—Standard S.A.E. shift, selective sliding gear type, 4 speeds forward and 1 reverse. Provision for power take-off.

Clutch—10" dry single plate; ball-bearing release.

Frame—One-piece pressed steel channels 8" maximum depth, 11/64" thick, 2½" maximum flange width. 7 cross members including rear motor support.

Wheels—Malleable iron spoked type, 6 spoke front and rear. Demountable rims.

Front Axle—Elliott type, I-beam section; ball bearings at steering pivots. Adjustable tapered roller bearings at wheels.

Steering Gear—Semi-irreversible, worm and sector type adjustable for wear.

Rear Axle—Full floating enclosed in electric steel banjo housing with chrome nickel steel tubes, electric welded to housing. Spiral bevel gear drive. Gears and shafts of chrome nickel alloy steel. 9 roller bearings. Gear ratio 5.667:1 (6.857 ratio may be obtained through the Special Equipment Division).

Brakes—Foot, four wheel hydraulic, internal expanding, cast alloy brake drums. Drum diameter 14" front, 16" rear; lining width 1½" front, 2¼" rear. Total brake lining area 229 sq. in. Hand, propeller shaft type, external contracting. Drum diameter 8", lining width 2". Total parking brake lining area 49.25 sq. in.

Propeller Shaft—Two-piece tubular steel 2¼" diameter front and 3" diameter rear. Supported in center by ball bearing with flexible mounting.

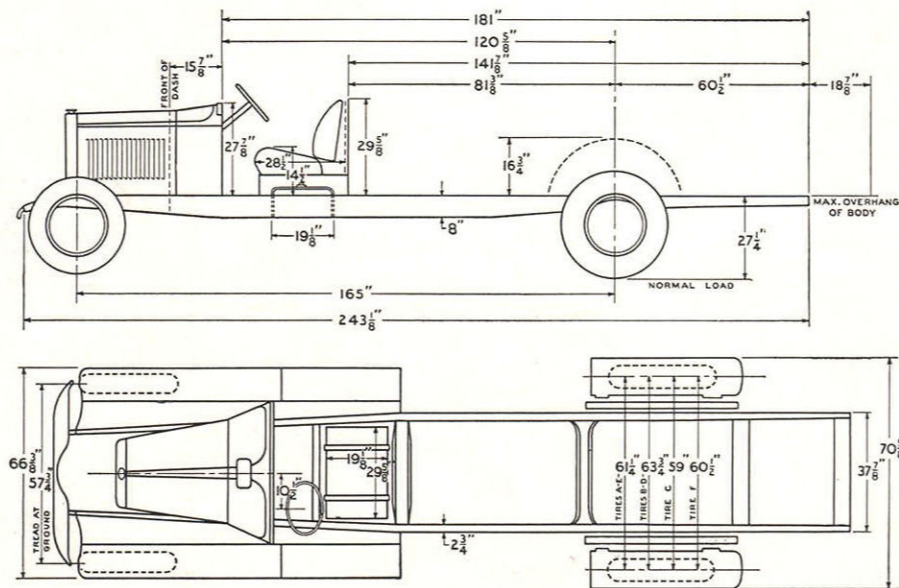
Universal Joints—3 cross and trunion, centrifugal oil type.

Springs—Semi-elliptic, alloy steel, all leaves. Front length 39"; width 2"; 8 leaves. Rear (Stake, Platform, High Rack and chassis) 5 stage progressive type; length 48", width 2½". 17 leaves including 5 in auxiliary springs. Panel and Express—semi-elliptic length 48", width 2½"; 10 leaves.

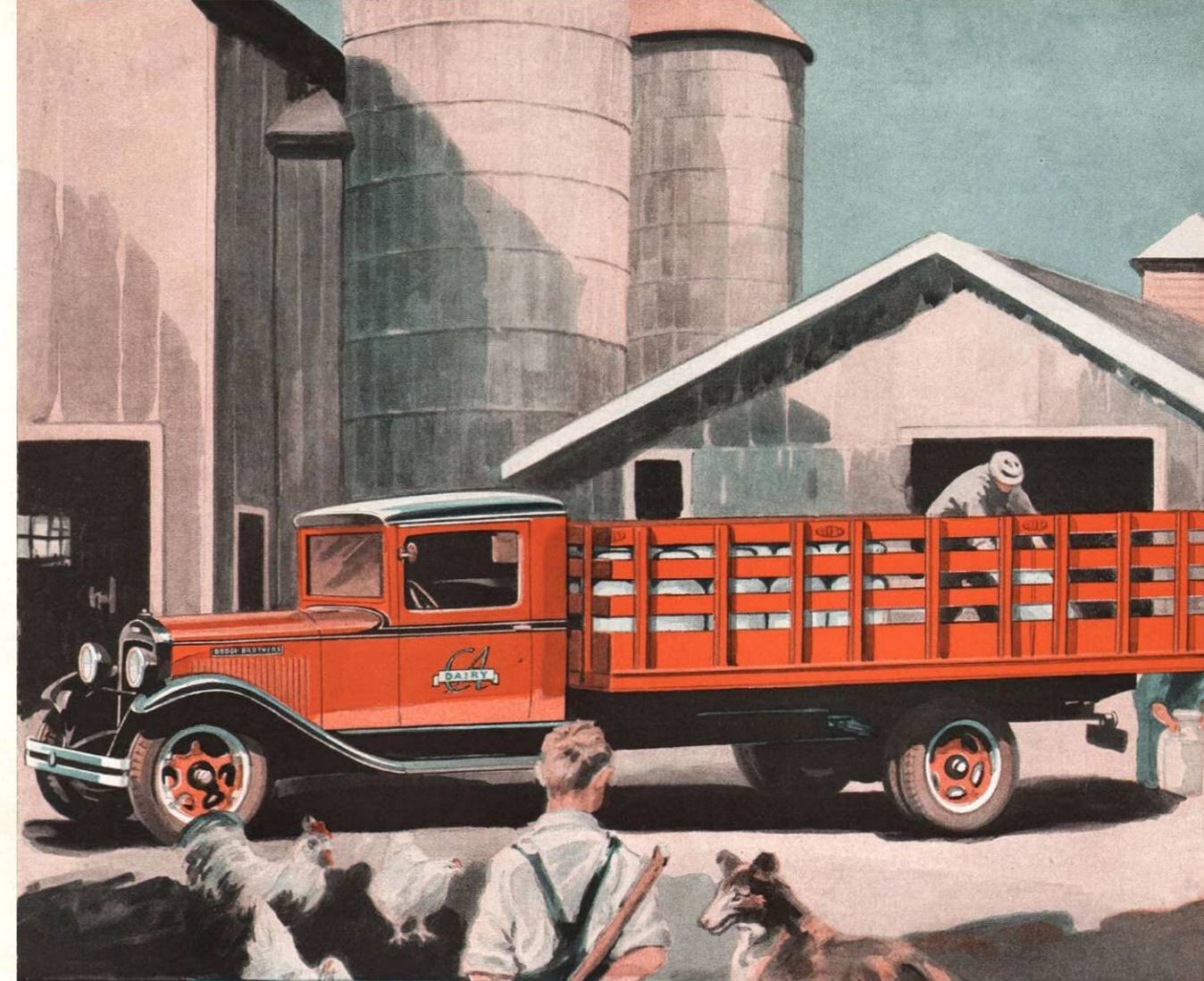
Equipment—All-steel flat-faced cowl with instrument board and instruments. Cowl ventilator. Black enamel radiator shell, and chromium plated radiator filler cap. Crown sheet metal fenders, front, short running boards and splash shields to back of cab. (Front and rear fenders with splash shield and long running boards on Panel.) Tire carrier; spare rim; electric horn; electric lights; two electric headlamps; depressed beam type. Combination tail and stop lamp. Instrument board light. Crankcase ventilator. Thermostat; electric starter; speedometer; oil pressure gauge; ammeter; locking ignition switch; carburetor choke button; license brackets. Tool kit. (Front and rear bumpers at extra cost.)

Tire combinations furnished with standard bodies—Stake, Platform and High Rack: A, B, D, E and F. Panel and Express: A, E and F.

Specifications Subject to Change Without Notice

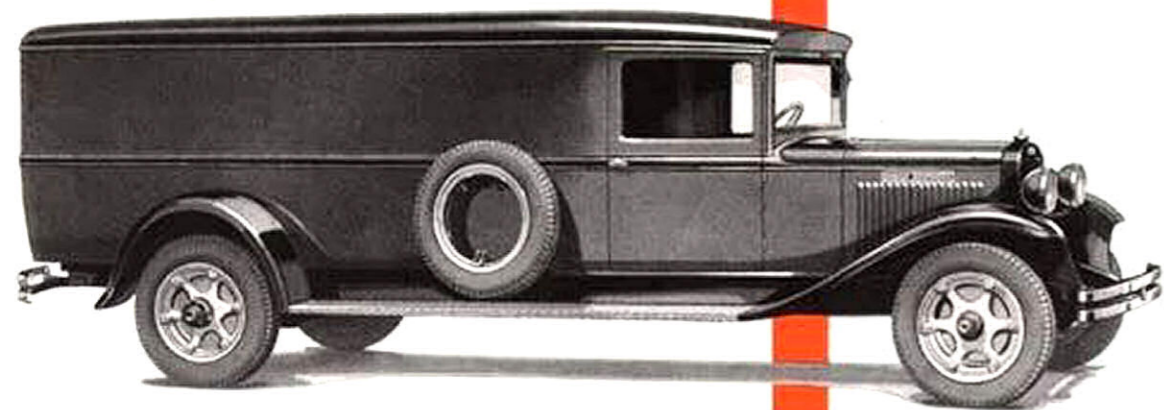


Form No. CFS
Code ZFAW
Printed in U. S. A.

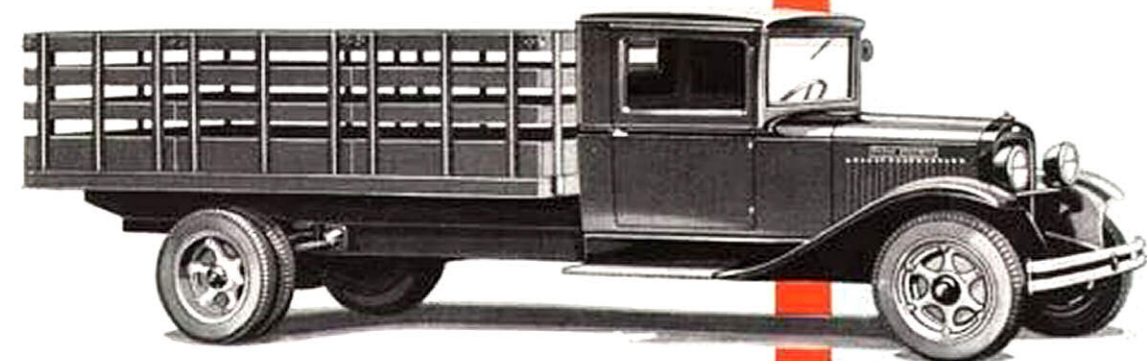


DODGE BROTHERS TRUCKS

1½ TON MODEL UF 31



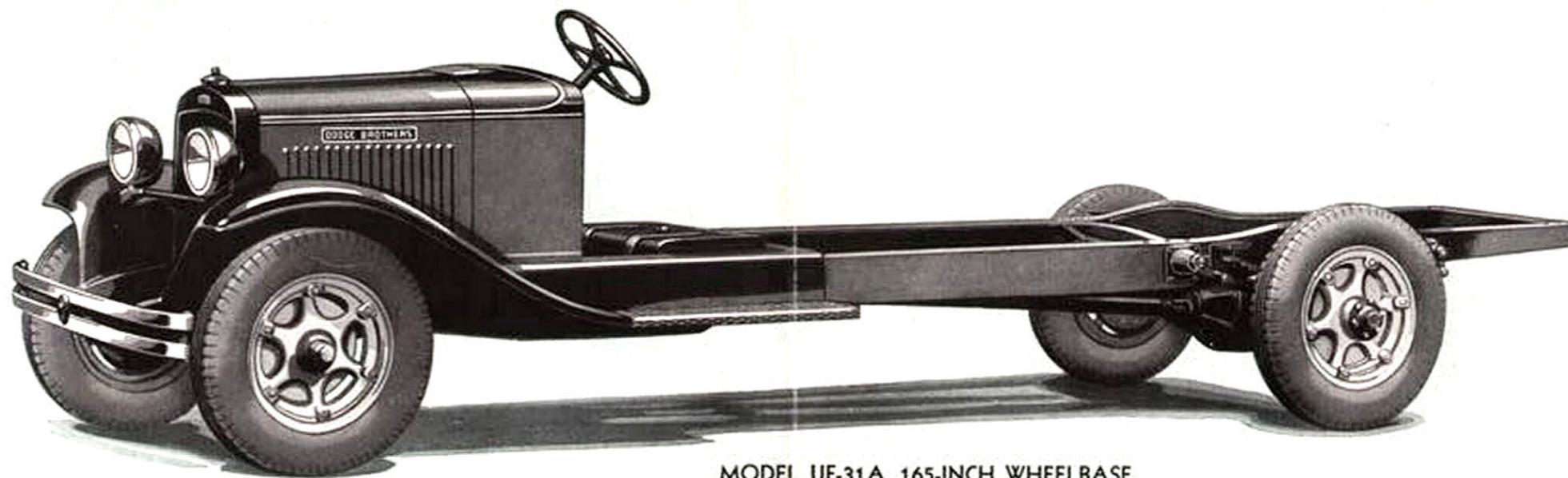
Panel body RUF-31—Chassis UF-31A. Loading space: 155 inches long, 51½ inches wide at belt line, and 55 inches high.



Stake body MUF-31 and Cab ZF-30 mounted on Chassis UF-31B. Loading space: 144¾ inches long, 78 inches wide. Stake sides 26 inches high.



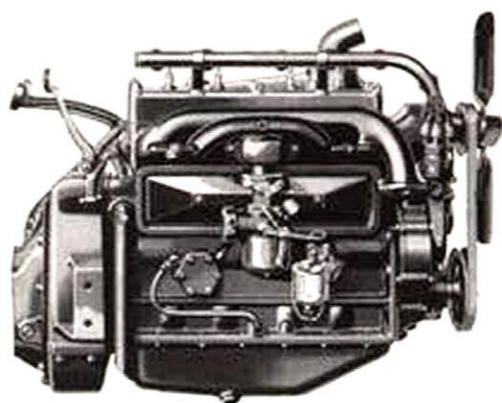
Platform body PUF-31 and Cab ZF-30 mounted on Chassis UF-31D. Loading space: 146¼ inches long, 78 inches wide.



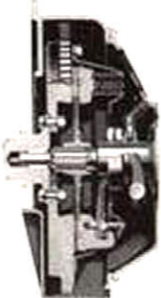
MODEL UF-31A, 165-INCH WHEELBASE

LONGER LIFE MEANS GREATER DEPENDABILITY

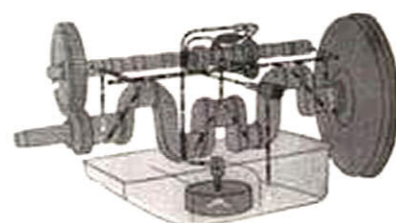
MODERN design, fine materials, and precise workmanship in Model UF-31 give that consistent performance which is the basis of the Longer Life and Greater Dependability of Dodge trucks. Many unusual features—the 48 horsepower truck engine—the large 10-inch clutch—the rugged 4-speed truck transmission—the strong full floating rear axle—the positive acting hydraulic brakes—the sturdy 8-inch frame—combine to give that outstanding power, strength and flexibility which, with longer economical life, make this truck remarkable in profit-earning ability. Any Dodge Brothers dealer will welcome your investigation of this outstanding value and will gladly demonstrate the unusual adaptability of Model UF-31 to the hauling of bulky loads.



Abundant, flexible power is provided by Dodge Brothers rugged and economical 4-cylinder 48 horsepower truck engine.



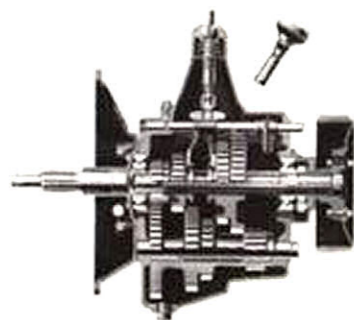
Modern design, light weight moving parts and large frictional surfaces, make Dodge Brothers 10-inch single plate clutch capable of handling capacity loads with ease.



Full pressure feed assures all moving engine parts ample lubrication.



Constant supply of lubricant to the bearing surfaces insures to the centrifugal oil type universal joints long life.



The four speed transmission, with large shafts and wide gears, provides a flexible range of speed and pulling power.



The full floating rear axle—advanced in design—is of the special bevel gear type with straddle mounted pinion. The rugged steel housing, with two large tapered roller bearings in each wheel, carries the rear weight of chassis, body and load.

DODGE BROTHERS TRUCKS

SOLD AND SERVICED BY DODGE BROTHERS DEALERS EVERYWHERE