

*Automotive
Illuminating
Equipment*

1890 - 1924

*The Jno W. Brown Mfg. Co.
Columbus, Ohio
U.S.A.*

Purchasing Guide *for* Automobile Lamps

FOREWORD

IT may be of interest to our customers to know that we have been manufacturing lamps since 1890. Whether in the days of the carriage lamp or since the advent of motor driven vehicles, we have spared neither effort nor expense in the pursuit of our aim to manufacture lamps of popular design unsurpassed in workmanship and finish.

A modern plant with unequalled facilities excellently located and accessible to seven main trunk railway lines enables us to give our customers prompt and efficient service.

The illustrations and specifications submitted in the following pages of this catalog are the result of thirty-four years' experience in lamp building.

The Geo. W. Brown Mfg. Co.

Columbus, Ohio, U. S. A.



FACTS ABOUT OUR LAMPS

Steel, brass, nickel silver, duralumin, and solid nickel lamps as desired.

All nickered parts are heavily nickel plated and highly burnished.

Reflectors, whether of steel or brass, are *silver* plated insuring the maximum amount of light. All reflectors are manufactured by improved methods with particular consideration for parabolic curves so that waste of light and glare are reduced to the minimum.

Standard mountings are furnished as desired.

All lamps are equipped with carefully tested bulbs to insure accuracy and candle power efficiency.

All lamps are equipped with sturdily built and carefully tested electrical fittings with particular attention being given to proper insulation.

Model No. 352 Electric Head Lamp

A drum head lamp for popular priced cars. Made of heavy gauge material carefully finished. Furnished with single or double filament bulbs, special type hook-on door and double contact focusing socket.



No. 352

DIMENSIONS

| | |
|----------------------------|---------|
| Diameter of body..... | 8 7/8" |
| Depth of lamp | 5" |
| Outside lens diameter..... | 8" |
| Lens opening diameter..... | 7 3/16" |

Furnished in material and finish listed below:

| Door | | Reflector | | Body | |
|----------|---------------|-----------|---------------|----------|---------------|
| Material | Finish | Material | Finish | Material | Finish |
| Steel | Nickel Plated | Steel | Silver Plated | Steel | Black Enamel |
| Steel | Nickel Plated | Steel | Silver Plated | Steel | Nickel Plated |

Models No. 400, 401 and 450 Electric Head Lamps

Conventional design drum head lamps of the same general proportions but different sizes. Made of the highest grade materials of heavy weight to withstand the hardest usage. Nos. 400 and 401 can be furnished with rear nickel rims, adding greatly to their attractiveness. The wiring outfits are of the latest design with outside adjustment for focusing. Doors are easily removed by rotating, but will not jar loose.



No. 400-401-450

MOUNTINGS

Furnished with fender bracket and tie rod hook, tapered universal prop, standard S. A. E. prop, cast hollow prop mounting, or either cast or pressed steel side prop with or without set screw as illustrated on page 6.

DIMENSIONS AND PROP CENTERS

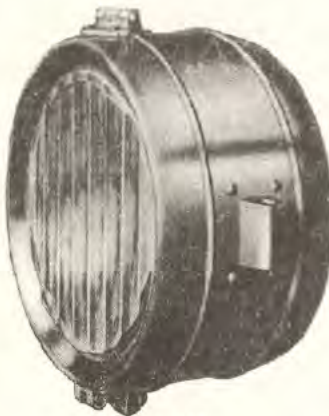
| | No. 400 Deep Body | No. 400 Shallow Body | No. 401 | No. 450 |
|----------------------------|----------------------|-------------------------|----------|------------------|
| Diameter of body..... | 10 3/8" | 10 1/4" | 9 3/8" | 10 3/8" |
| Depth of lamp..... | 6" | 5 3/8" | 5 1/2" | 6 3/8" |
| Prop to rear of lamp..... | 3" | 3" | 3" | 3 1/2" |
| Outside lens diameter..... | 9" | 9" | 8" | 9 1/8" |
| Lens opening diameter..... | 8 5/2" | 8 3/8" | 7 3/4" | 8 1/2" |
| Prop centers..... | 8 1/2 or 11" | 8 1/2 or 11" | 8 or 10" | 9 1/4 or 11 3/4" |

Furnished in material and finish listed below:

| Door | | Reflector | | Body | |
|----------|---------------|-----------|---------------|----------|---------------|
| Material | Finish | Material | Finish | Material | Finish |
| Brass | Nickel Plated | Brass | Silver Plated | Steel | Black Enamel |
| Brass | Nickel Plated | Brass | Silver Plated | Brass | Nickel Plated |
| Steel | Nickel Plated | Steel | Silver Plated | Steel | Black Enamel |
| Steel | Black Enamel | Steel | Silver Plated | Steel | Black Enamel |

Model No. 406 Truck Head Lamp

A drum head lamp of the same general dimensions and proportions as our model No. 400. Lens is held in place by a full retaining ring and six clips. Hinge on top of lamp and swivel catch at bottom. Specially designed truck type wiring outfit. Furnished only with cast side props, 11" prop center.



No. 406

MOUNTINGS

Recommended only for use with forked type bracket and cast side props.

DIMENSIONS AND PROP CENTERS

| | |
|----------------------------|--------------|
| Diameter of body..... | 10 1/4" |
| Depth of lamp..... | 6" |
| Prop to rear of lamp..... | 3" |
| Outside lens diameter..... | 9" |
| Lens opening diameter..... | 8 5/32" |
| Prop centers..... | 8 1/2 or 11" |

Furnished in material and finish listed below:

| Door | | Reflector | | Body | |
|----------|---------------|-----------|---------------|----------|---------------|
| Material | Finish | Material | Finish | Material | Finish |
| Brass | Nickel Plated | Brass | Silver Plated | Steel | Black Enamel |
| Brass | Nickel Plated | Brass | Silver Plated | Brass | Nickel Plated |
| Steel | Nickel Plated | Steel | Silver Plated | Steel | Black Enamel |
| Steel | Black Enamel | Steel | Silver Plated | Steel | Black Enamel |



No. 525

Model No. 525 Electric Head Lamp

A bell shaped electric head lamp furnished only with side prop mounting 7" from center to center. Has rotating type of door of very simple construction. Can be furnished with single or double bulb. Adjustable focusing device on outside of lamp.

DIMENSIONS

| | |
|-------------------------------|---------|
| Diameter of door..... | 9" |
| Extreme depth..... | 5" |
| Diameter of lens..... | 8" |
| Diameter of door opening..... | 7 3/16" |
| Prop centers..... | 7" |

FINISH

Black enamel, all steel construction.



No. 600-601
Fig. 1

Models No. 600 and 601 Electric Head Lamp

Two drum head lamps of the same general design but different sizes. Furnished with (Fig. 1) or without (Fig. 2) double rim as desired. Equipped with Brown rotating door.

MOUNTINGS

Furnished with fender bracket and tie rod hook, tapered universal prop, standard S. A. E. prop, cast hollow prop or either cast or pressed steel side prop with or without screws as illustrated on page 6.

DIMENSIONS AND PROP CENTERS

| | No. 600 | No. 601 |
|----------------------------|---------|---------|
| Diameter of body..... | 10 1/8" | 9 1/8" |
| Diameter of door..... | 10 3/8" | 9 3/4" |
| Depth overall..... | 5 3/8" | 5 3/4" |
| Outside lens diameter..... | 9 3/8" | 8 3/4" |
| Lens opening diameter..... | 8 3/8" | 7 1/2" |
| Prop centers..... | 8 1/2" | 8 3/4" |

Furnished in material and finish listed below:

| Door | | Reflector | | Body | |
|----------|---------------|-----------|---------------|----------|---------------|
| Material | Finish | Material | Finish | Material | Finish |
| Brass | Nickel Plated | Brass | Silver Plated | Steel | Black Enamel |
| Brass | Nickel Plated | Brass | Silver Plated | Brass | Nickel Plated |
| Steel | Nickel Plated | Steel | Silver Plated | Steel | Black Enamel |
| Steel | Black Enamel | Steel | Silver Plated | Steel | Black Enamel |



No. 600-601
Fig. 2

Model No. 602 Head Lamp

A semi-drum head lamp of beautiful design, particularly adaptable for cars up to 120" wheelbase, such as the Dodge and Hupmobile. Equipped with hook-on door and swivel lock, permitting easy access to interior of lamp. Carefully sealed with felt rim to prevent reflector tarnishing and to eliminate dust. Has external focusing device.

MOUNTINGS

Furnished in tapered universal prop, standard S. A. E. prop, cast hollow prop or either cast or pressed steel side prop with or without screw as illustrated on page 6.

DIMENSIONS AND PROP CENTERS

Furnished in material and finish listed below:

| | |
|----------------------------|---------|
| Diameter of body..... | 9 1/8" |
| Diameter of door..... | 9 3/4" |
| Depth overall..... | 5 3/4" |
| Outside lens diameter..... | 8 3/4" |
| Lens opening diameter..... | 7 1/2" |
| Prop centers..... | 10 1/4" |

| Door | | Reflector | | Body | |
|----------|---------------|-----------|---------------|----------|---------------|
| Material | Finish | Material | Finish | Material | Finish |
| Brass | Nickel Plated | Brass | Silver Plated | Steel | Black Enamel |
| Brass | Nickel Plated | Brass | Silver Plated | Brass | Nickel Plated |
| Steel | Nickel Plated | Steel | Silver Plated | Steel | Black Enamel |



No. 602

See Yellow Sheets For Directions For Ordering and Prices

Models No. 800 and 801 Electric Head Lamps

Two bell shaped head lamps of the same general design but different sizes. Equipped with rotating doors easily removable, but so constructed to avoid jarring loose. Carefully sealed with dust ring to prevent tarnishing and to eliminate dust. Particularly adaptable for heavy duty on trucks and large passenger cars.



No. 800-801

MOUNTINGS

Furnished with fender bracket and tie rod hook, cast hollow prop or either cast or pressed steel side prop with or without set screw as illustrated on page 6.

DIMENSIONS AND PROP CENTERS

| | No. 800 | No. 801 |
|----------------------------|---------------|------------------------|
| Diameter of body..... | 10 1/4" | 9 7/8" |
| Diameter of door..... | 11" | 10" |
| Depth overall..... | 6 3/4" | 5 3/4" |
| Outside lens diameter..... | 9 1/8" | 8 3/4" |
| Lens opening diameter..... | 8 5/8" | 7 1/2" |
| Prop centers..... | 8 3/4"-9 3/4" | 7, 7 1/2", 8 or 8 1/2" |

Furnished in material and finish listed below:

| Door | | Reflector | | Body | |
|----------|---------------|-----------|---------------|----------|---------------|
| Material | Finish | Material | Finish | Material | Finish |
| Brass | Nickel Plated | Brass | Silver Plated | Steel | Black Enamel |
| Brass | Nickel Plated | Brass | Silver Plated | Brass | Nickel Plated |
| Steel | Nickel Plated | Steel | Silver Plated | Steel | Black Enamel |
| Steel | Black Enamel | Steel | Silver Plated | Steel | Black Enamel |

Model No. 802 Electric Head Lamp

A small bell shaped head lamp for use on light trucks and motorcycles. Can be furnished with standard motorcycle cast bracket, 1 1/8" long with 25/64" drilled hole, 5 1/2" prop centers. Also furnished with standard pressed steel side prop either plain or set screw as desired. Motorcycle type can be furnished with three-way switch and dimmer bulb.



No. 802

DIMENSIONS AND PROP CENTERS

| | |
|----------------------------|--------------------------|
| Diameter of body..... | 7 3/4" |
| Diameter of door..... | 8" |
| Depth overall..... | 5 1/2" |
| Outside lens diameter..... | 7" |
| Lens opening diameter..... | 6" |
| Prop centers..... | 5 1/2", 6", 6 1/2" or 7" |

Furnished in material and finish listed below:

| Doors | | Reflector | | Body | |
|----------|---------------|-----------|---------------|----------|---------------|
| Material | Finish | Material | Finish | Material | Finish |
| Brass | Nickel Plated | Brass | Silver Plated | Steel | Black Enamel |
| Brass | Nickel Plated | Brass | Silver Plated | Brass | Nickel Plated |
| Steel | Nickel Plated | Steel | Silver Plated | Steel | Black Enamel |
| Steel | Black Enamel | Steel | Silver Plated | Steel | Black Enamel |

Model No. 804 Electric Head Lamp

A small drum head lamp of simple, sturdy construction made especially for light trucks. Has Brown rotating door and heavy wiring outfit with outside focusing device.

MOUNTINGS

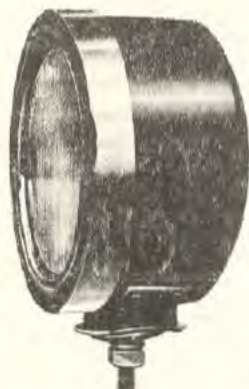
Furnished with tapered universal prop, standard S. A. E. prop or either cast or pressed steel side prop with or without set screw as illustrated on page 6.

DIMENSIONS AND PROP CENTERS

| | |
|----------------------------|--------|
| Diameter of body..... | 7 3/4" |
| Diameter of door..... | 8" |
| Depth overall..... | 5" |
| Outside lens diameter..... | 7" |
| Lens opening diameter..... | 6" |
| Prop centers..... | 8 3/8" |

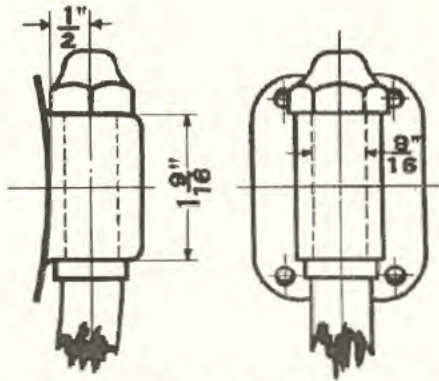
Furnished in material and finish listed below:

| Door | | Reflector | | Body | |
|----------|---------------|-----------|---------------|----------|---------------|
| Material | Finish | Material | Finish | Material | Finish |
| Brass | Nickel Plated | Brass | Silver Plated | Steel | Black Enamel |
| Brass | Nickel Plated | Brass | Silver Plated | Brass | Nickel Plated |
| Steel | Nickel Plated | Steel | Silver Plated | Steel | Black Enamel |
| Steel | Black Enamel | Steel | Silver Plated | Steel | Black Enamel |

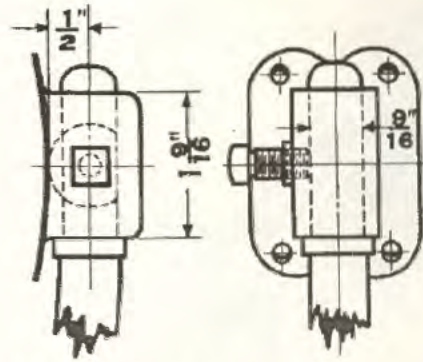


No. 804

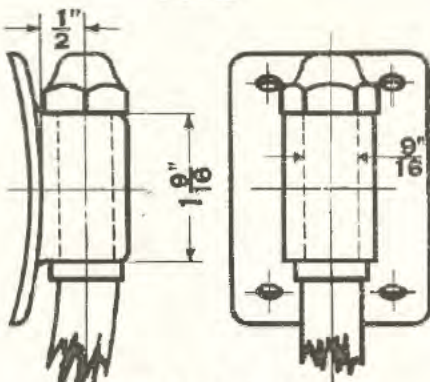
See Yellow Sheets For Directions For Ordering and Prices



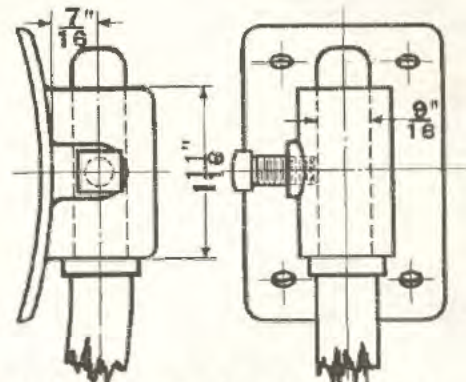
PRESSED STEEL PLAIN PROP
FIG. 1



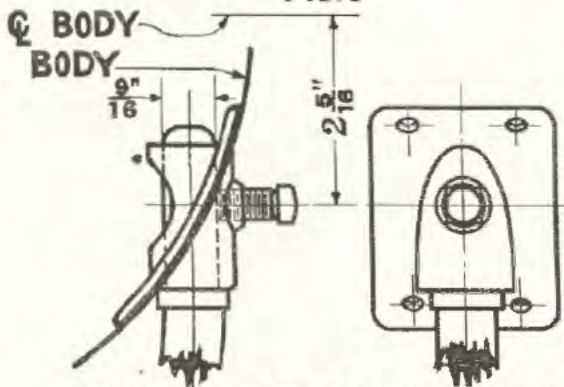
PRESSED STEEL SET SCREW PROP
FIG. 2



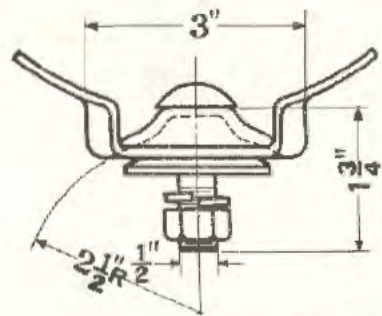
CAST PLAIN PROP
FIG. 3



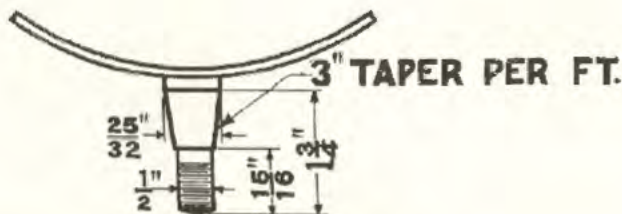
CAST SET SCREW PROP
FIG. 4



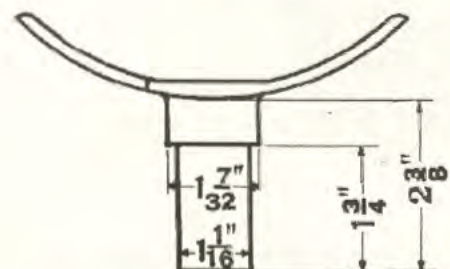
CAST INVERTED SIDE PROP
FIG. 5



STD. S.A.E. PROP
FIG. 6



TAPERED UNIVERSAL PROP
FIG. 7



CAST HOLLOW PROP
FIG. 8

Model No. 210 Electric Side Lamp

A stream line cowl or fender lamp suitable for any type motor car. Also used as a parking lamp. Equipped with 2 C. P. bulb, reflector, Beehive Moonstone lens and quick detachable door.



No. 210

MOUNTINGS

$\frac{1}{2}$ "—20 x 1" bolt on bottom as shown in illustration.

DIMENSIONS

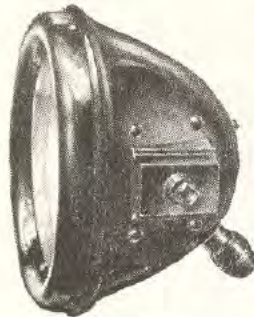
| | |
|-------------------------------|-------------------|
| Diameter of door..... | 2 $\frac{3}{4}$ " |
| Diameter of body..... | 2 $\frac{5}{8}$ " |
| Length overall..... | 4 $\frac{3}{4}$ " |
| Outside diameter of lens..... | 2 $\frac{3}{4}$ " |
| Diameter of door opening..... | 2 $\frac{3}{4}$ " |

FINISH

Black and nickel or full nickel.

Model No. 310 Electric Side Lamp

A well constructed side lamp adaptable for trucks and taxicabs. Has silver plated parabolic reflector, outside focusing device, and regular wiring outfit. Furnished with 4, 10, or 15 candle power bulb as desired.



No. 310

MOUNTINGS

Furnished with single combination prop on side of lamp in rights and lefts or with double combination prop. 6" prop center, for mounting on fork bracket.

DIMENSIONS

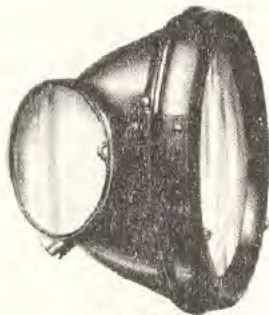
| | |
|-------------------------------|-------------------|
| Diameter of body..... | 6 $\frac{1}{2}$ " |
| Diameter of door..... | 6 $\frac{1}{2}$ " |
| Depth overall..... | 4 $\frac{3}{8}$ " |
| Outside diameter of lens..... | 5 $\frac{1}{2}$ " |
| Diameter of door opening..... | 4 $\frac{3}{4}$ " |
| Prop centers..... | 6" |

Furnished in material and finish listed below:

| Door | | Reflector | | Body | |
|----------|---------------|-----------|---------------|----------|---------------|
| Material | Finish | Material | Finish | Material | Finish |
| Brass | Nickel Plated | Brass | Silver Plated | Steel | Black Enamel |
| Brass | Nickel Plated | Brass | Silver Plated | Brass | Nickel Plated |
| Steel | Black Enamel | Brass | Silver Plated | Steel | Black Enamel |

Model No. 320 Taxicab Lamp

A standard taxicab side lamp of sturdy construction. Has frosted lens in front and on one side with combination prop on other side for mounting on $\frac{1}{2}$ " round rod or 1 $\frac{3}{8}$ " x $\frac{1}{4}$ " flat bracket. Furnished in rights and lefts. The door is held on securely by hinges, and glass is fastened with retainer and four screws and dust proofed with felt. Inside of lamp finished in aluminum lacquer.



No. 320

DIMENSIONS

| | |
|-------------------------------|-------------------|
| Diameter of body..... | 6 $\frac{1}{2}$ " |
| Diameter of door..... | 6 $\frac{1}{2}$ " |
| Depth overall..... | 4 $\frac{3}{8}$ " |
| Outside diameter of lens..... | 5 $\frac{1}{2}$ " |
| Diameter of door opening..... | 4 $\frac{3}{4}$ " |

FINISH

Furnished in black and nickel or all black with bulb of any candle power voltage, single or double contact as desired.

See Yellow Sheets For Directions For Ordering and Prices



No. 420
Fig. 1



No. 420
Fig. 2

Model No. 420 Electric Side Lamp

A drum side lamp that harmonizes perfectly with our models 400, 401 and 450 electric head lamps as well as with any conventional drum lamp. Can be mounted on cowl or fender with bolt type mounting or on pillar post on closed cars by means of a flange on back of lamp as shown in Figure No. 2. This model lamp may also be obtained with nickel plated brass back ring which adds much to its appearance.

DIMENSIONS

| | |
|-----------------------|--------|
| Diameter of body..... | 3" |
| Diameter of door..... | 3" |
| Lens diameter..... | 2 1/2" |
| Door opening..... | 2 3/4" |
| Depth overall..... | 2 7/8" |

MOUNTINGS

3/8"—20 x 1 1/2 S. A. E. bolt on bottom or flange on rear of lamp.

FINISH

Furnished in black and nickel, steel body and brass door or all brass nickel plated.

Model No. 425 Electric Side Lamp

A semi-drum cowl or fender lamp for use in conjunction with our No. 602 electric head lamp or any semi-drum lamp, particularly, the Dodge. Furnished only with bolt for mounting on cowl or fender. Has frosted sapphire lens, 2 c. p. bulb, and rotating type of door.



No. 425

DIMENSIONS

| | |
|-----------------------|--------|
| Diameter of door..... | 2 7/8" |
| Diameter of body..... | 2 3/4" |
| Depth overall..... | 2 3/8" |
| Lens diameter..... | 2 1/2" |
| Door opening..... | 2 1/4" |

FINISH

Black and nickel, steel body, brass door or full nickel or brass.

MOUNTINGS

3/8"—20 x 1 1/2 S. A. E. bolt on bottom of lamp.

Model No. 430 Electric Side Lamp

A large side lamp equipped with brass, silver plated, parabolic reflector. Adaptable for trucks and taxicabs. Equipped with rotating door and regular wiring outfit. A combination prop on the back of lamp permits mounting on 1/2" round rod or 1 3/8 x 3/8 flat strap. Can be furnished in single or double contact, 4, 10, or 21 c. p. bulbs as desired.



No. 430

DIMENSIONS

| | |
|----------------------------|--------|
| Diameter of body..... | 5" |
| Diameter of door..... | 5" |
| Depth overall..... | 3 1/8" |
| Outside lens diameter..... | 4 3/4" |
| Door opening..... | 4" |

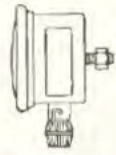
MOUNTINGS

Combination prop on back of lamp.

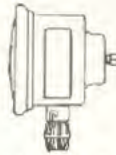
FINISH

Furnished in black and nickel, steel body, brass door or in full nickel all brass.

See Yellow Sheets For Directions For Ordering and Prices



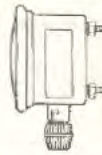
Style No. 1
(Ford)



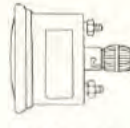
Style No. 2



No. 706



Style No. 3



Style No. 4

Model No. 706 Electric Tail Lamp

A standard tail lamp equipped with 3" ruby semaphore lens and celluloid white light lens and off and on type socket and plug to comply with certain state regulations. This lamp is furnished in full brass with snap ring for retaining lens, or in black and nickel finish with brass nickel plated rotating door.

DIMENSIONS

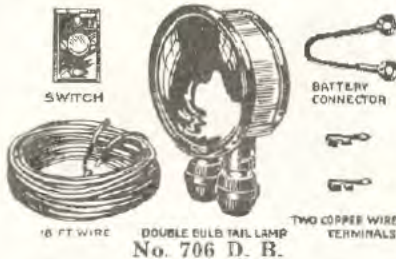
| | |
|------------------------|--------|
| Diameter of front..... | 3 1/4" |
| Diameter of body..... | 2 3/8" |
| Diameter of lens..... | 3" |
| Depth overall..... | 1 3/4" |

MOUNTINGS (As shown in line drawing)

- Style No. 1 Single bolt mounting on rear of lamp socket out of bottom.
- Style No. 2 Combination prop for mounting on 1 3/8 x 1/8 flat strap or 1/2" round rod.
- Style No. 3 Two bolt mounting, 2" centers parallel to white light lens and socket from side of lamp.
- Style No. 4 Two bolt mounting, 2" centers parallel to white light socket in back of lamp.
- Style No. 5 Two bolts, 2" centers at right angles to white light lens socket out of back of lamp. (Not illustrated.)

FINISH

All black with snap ring type of lens retainer, steel body or black and nickel, steel body and brass door similar to M-706 nickel door but without license bracket.



Model No. 706 DB Electric Tail Lamp

A double bulb electric tail lamp for Ford cars without starters. Furnished complete with switch, wire, terminals and connections. Regular mounting, single bolt type in back of lamp, but can be furnished with combination prop. Dimensions are the same as the regular No. 706 electric tail lamp. Furnished only in all black.



No. M-706
Nickel Door

Model No. M-706 Electric Tail Lamp

This lamp has the same size body and door as the regular No. 706 except that it is furnished complete with license bracket and is approved in the State of Massachusetts. The mountings are the same as shown on line drawing of Model No. 1009 stop tail lamp.

DIMENSIONS

| | |
|--------------------------------|---------|
| Diameter of body..... | 2 3/8" |
| Diameter of door..... | 3 1/4" |
| Diameter of lens..... | 3" |
| Length of license bracket..... | 10 1/4" |



No. M-706
All Black

MOUNTINGS

Furnished with two bolt mounting, 2" centers, at right angles to license bracket, two bolt mounting, 1 3/4" centers at right angles to license bracket, combination prop mounting, fender bracket type of mounting or two 9/32 holes in license bracket, 2" centers.

Mountings for these tail lamps are the same as corresponding mountings on the 1009 Brown Duplex Stop Tail Lamps. See illustration on page 10.

Model No. 1009 Brown Duplex Signal Lamp—Type A



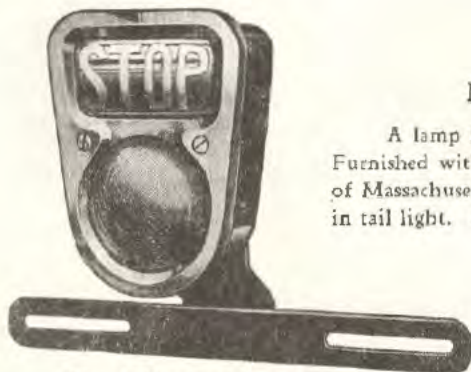
No. 1009—Type A

A combination stop and tail lamp designed for trucks and taxicabs. Equipped with unbreakable pyralin lens held in by snap ring. Furnished with 21 C. P. bulb for stop light and 2 C. P. bulb for tail light. With or without license bracket. Those furnished with license bracket are approved in the State of Massachusetts.

FINISH

All steel, all black except brass nickel plated reflector, black snap ring.

All lamps packed in separate cartons. Furnished complete with brake rod clamp, switch and 8 feet of rubber covered, weather proof wire. Specify whether single or double contact bulb. 6/8 or 12/16 volts. Unless otherwise specified furnished with 6/8 volt, single contact.



No. 1009—Ford Type

Model No. 1009 Brown Duplex Signal Lamp—Type B

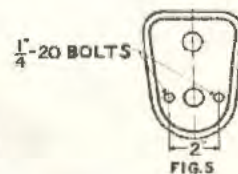
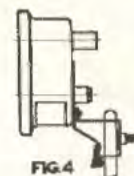
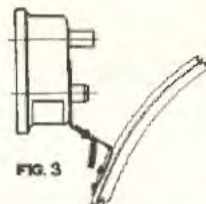
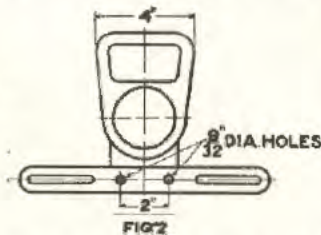
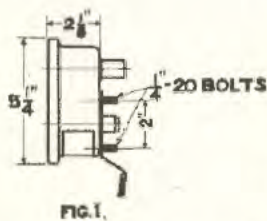
A lamp for high grade passenger cars equipped with brass nickel plated door and glass lens. Furnished with or without license bracket. Those with license bracket are approved in the State of Massachusetts. Lamps have effective reflector. 21 C. P. bulb in stop light and 2 C. P. bulb in tail light. Stop lens may be either green or red as desired.

MOUNTINGS

See below for mountings and dimensions.

Each lamp furnished with brake rod clamp, switch and 8 ft. of insulated wire. Specify voltage of bulb and whether single or double contact is required.

MOUNTINGS FOR TYPE A AND B BROWN DUPLEX



Mountings and dimensions are as shown in the line drawings. Two bolt mounting, 2" centers, in back of body as shown in Figure No. 1. Two holes, 2" centers in license bracket as shown in Figure No. 2, fender bracket mounting as shown in Figure No. 3. Combination prop for mounting on 1 3/8" x 1/2" flat strap or 1/2" round rod as shown in Figure No. 4 or two bolt mounting, 2" centers in horizontal plane as shown in Figure No. 5.



Model No. 1009 Ford Type Brown Duplex Signal Lamp

A small, compact, lamp of good appearance and very effective stop signal. Made of heavy materials, steel body, heavy black enameled and brass doors and reflector, nickel plated. Mounts in place of regular Ford tail lamp. Green or red stop lens. Complete with switch, clamp, wire for connections and eye terminals. Two candle power bulb in tail lamp. 21 C. P. bulb in stop lamp. No holes to drill or extra license bracket to attach.

The Brownlite—Model No. 200

A large single shell spotlight which adds to the appearance of the finest motor car. Brackets are very strongly made and lamp is thoroughly water proof. Furnished with ray control for use in the State of California. Has switch in handle and furnished complete with a 3 ft. length of armored cable for making necessary connections. This lamp can be furnished with plain convex lens or the Brown "B" lens which gives a bright spot in the center and a wide spread beam of light, making it particularly desirable for use in states where the dimming law is in effect.

Furnished with or without rear vision mirror as illustrated.



No. 200—Open Car



No. 200—With Mirror

CLAMP MOUNTINGS

Furnished with two sizes of clamps for mounting on wide or narrow wind shields. In ordering specify which is desired. Also furnished with closed car bracket.

Furnished in finish and material listed below:

Brass shell and rim and steel bracket in black and nickel or brass shell and steel bracket with shell and handle nickel plated and bracket in black enamel. Reflectors all silver plated.

DIMENSIONS

| | |
|--|--------|
| Lens diameter | 6" |
| Door opening | 5 3/4" |
| Length overall | 7" |
| Distance from center of lamp to center of windshield | 5 1/2" |

Each lamp furnished with 21 C. P. double contact bulb. Unless otherwise specified equipped with 6/8 volt.



No. 201—Open Car



No. 201—Closed Car

The Brownlite—Model No. 201

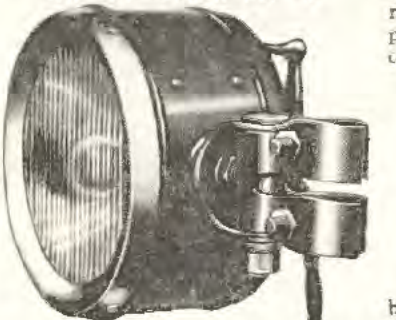
A small spotlight combining simplicity of construction with ease and strength of operation. Due to the short focal length and accuracy of the reflector, a beam of high intensity is obtained. Lamp is constructed of stamped parts and weather resisting materials. Finest type of rotating switch obtainable is incorporated integral with the socket. This lamp may be furnished with plain convex lens or Brown "B" lens which gives a bright spot in the center and a wide spread beam, making it particularly desirable for use in states where the dimming law is in effect.

DIMENSIONS

| | |
|---|--------|
| Diameter of lens | 4 1/2" |
| Outside diameter | 4 3/8" |
| Length overall | 5 1/4" |
| Length from center line of lamp to end of bracket | 4 5/8" |

MOUNTINGS

Furnished with open car bracket, closed car bracket or motorcycle bracket. Equipped with 21 C. P. bulb and unless otherwise specified 6/8 volt.



No. 431

Drum Brownlite—Model 431

A drum type spotlight of the same appearance as our Nos. 400, 401 and 450 head lamps. Furnished with two types of open car brackets, one for wide, and the other for narrow windshields, or with closed car bracket. Specify type desired. Furnished with plain lens or with Brown "B" lens which gives a wide spread for driving light. Lamps can also be furnished with red or green plain glass for motor bus service.

DIMENSIONS

| | |
|--|--------|
| Outside diameter | 5" |
| Length overall | 4 5/8" |
| Diameter of lens | 4 3/8" |
| Diameter of lens opening | 4" |
| Distance from center of lamp to center of windshield | 5" |

Furnished in finish and material listed below:

Black and nickel, brass door, brass reflector, steel body or all brass full nickel except bracket which is steel black enamel. Furnished with 3 ft. of black cord, adjustable focusing device and 21 C. P. 6/8 volt double contact bulb unless otherwise specified.

See Yellow Sheets For Directions For Ordering and Prices

Model No. 1100 Electric Searchlight

An electric searchlight for commercial and fire apparatus trucks. The body of this lamp is the same size as our No. 400 electric headlight. Mounted on swivel bracket with handle on back of lamp for adjusting. May be locked in place by thumb screw on swivel bracket. Has rotating door and adjustable focus wiring outfits. Can be furnished with 50 C. P. bulb.

MOUNTINGS

Swivel bracket with stud 2— $31/32$ long x $1/8$ " diameter with nut on end or with swivel bracket tapped $5/8$ —18, 1" deep or with stud and frog plate for mounting on dash.

Furnished in material and finish listed below:

Black and nickel, brass doors and reflectors, steel body or full nickel, all brass and manganese bronze construction.

DIMENSIONS

| | |
|--|------------|
| Diameter of door | 10 $1/4$ " |
| Diameter of body | 10 $1/8$ " |
| Depth | 5 $1/2$ " |
| Distance from center of lamp to bottom of swivel bracket | 8" |
| Door opening | 8 $3/4$ " |
| Outside lens diameter | 9" |



No. 1100

Model No. 1200 Electric Searchlight

A large searchlight similar to our No. 100 except that it has hard rubber grip on handle at rear of lamp. This lamp has swivel type bracket with different methods of mounting and means for locking in place. Adjustable focusing device and rotating door. Can be furnished with 50 C. P. bulb.

MOUNTINGS

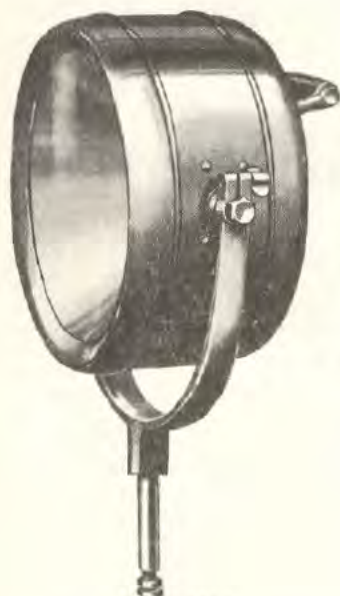
Furnished with 2— $31/32$ long x $1/8$ " diameter stud in swivel bracket, with bracket tapped $5/8$ —18, 1" deep or with stud and frog plate.

Furnished in material and finish listed below:

Furnished in black and nickel, brass doors and reflectors, steel body and mountings or in full nickel, all brass and manganese bronze construction.

DIMENSIONS

| | |
|--|------------|
| Diameter of body | 10 $3/8$ " |
| Diameter of door | 10 $3/8$ " |
| Depth of lamp | 6 $3/8$ " |
| Outside lens diameter | 9 $1/4$ " |
| Lens opening diameter | 8 $1/4$ " |
| Distance from center of body to bottom of swivel bracket | 9" |



No. 1200

Model No. 1300 Electric Searchlight (Formerly No. 800-S)

A large searchlight with bell shaped body the same size and dimensions as our No. 800 head lamp. Equipped with rotating door, adjustable focusing device, and very heavy wiring outfit. Can be furnished with 50 C. P. bulb if desired.

MOUNTINGS

Furnished only with stud and frog plate or swivel bracket tapped $5/8$ —18, 1" deep.

Furnished in material and finish listed below:

Furnished in black and nickel, brass doors and reflectors, steel body, all black, all steel construction or all brass, all nickel.

DIMENSIONS

| | |
|-----------------------|------------|
| Diameter of door | 11" |
| Diameter of body | 10 $3/8$ " |
| Depth overall | 6 $3/4$ " |
| Outside lens diameter | 9 $3/8$ " |
| Lens opening diameter | 8 $3/8$ " |



No. 1300

See Yellow Sheets For Directions For Ordering and Prices

Models No. 1 and No. 4 Gas Head Lamps

Two gas head lamps of the same general proportion and design but different sizes. Made of heavy materials. Door lens is held in place by the reflector flange securely fastened with four screws and dust proof with felt ring. The door mounting consists of heavy hinge at top and thumb screw catch at bottom. Furnished only with genuine ground Mangin mirror which is held in place by retaining ring and secured with four screws. All screws are equipped with lock washers to prevent jarring loose. The burner stem is made of heavy gauge brass tubing with offset connection in bottom of lamp. Both lamps are equipped with $\frac{3}{8}$ " gas tip properly ventilated to avoid excessive heat and guaranteed not to blow out under bad weather conditions.



No. 1 and 4
New Style

MOUNTINGS

Furnished only with side prop mounting. Either pressed steel, plain or set screw type or cast motorcycle prop.

DIMENSIONS AND PROP CENTERS

| | No. 1 | No. 4 |
|--------------------------------|----------------------|--|
| Diameter of door..... | 7 $\frac{3}{4}$ " | 6 $\frac{3}{4}$ " |
| Diameter of body..... | 5 $\frac{7}{8}$ " | 5 $\frac{1}{2}$ " |
| Depth overall..... | 5 $\frac{7}{8}$ " | 5 $\frac{1}{2}$ " |
| Diameter of lens..... | 6 $\frac{1}{2}$ " | 5 $\frac{3}{8}$ " |
| Diameter of door..... | 6 $\frac{1}{2}$, 7" | 6, 6 $\frac{1}{4}$, 5 $\frac{3}{4}$ " |
| Diameter of Mangin mirror..... | 5" | 4 $\frac{3}{4}$ " |

Note: No. 1 may be furnished with motorcycle prop, 6 $\frac{1}{2}$ " prop center and No. 4 may be furnished with cast motorcycle prop, 6 $\frac{1}{4}$ " prop center.

FINISH

Black and nickel, all steel, all black all steel, or all nickel.

Model No. 14-T Gas Head Lamp

The best gas head lamp ever built for heavy commercial vehicles. Door lens and front reflector held in place by retaining ring securely fastened with four screws through front of door. Equipped with genuine 6" mirror held in place by two retaining rings securely fastened with four screws through the back of the body in such a way as to avoid breakage of mirror. All screws equipped with lock washers, nuts and lock nuts to prevent any possibility of jarring loose. Equipped with $\frac{5}{8}$ " gas tip and heavy support tubing with angle connection on bottom of lamp so arranged to provide for proper focusing. Constructed with heavy hinge at top of door and screw latch at bottom. Lamp is perfectly ventilated and guaranteed to withstand the worst weather conditions without being extinguished.



No. 14-T

DIMENSIONS

| | |
|-------------------------------|-------------------|
| Diameter of door..... | 9 $\frac{3}{4}$ " |
| Diameter of body..... | 7 $\frac{3}{4}$ " |
| Depth overall..... | 6 $\frac{5}{8}$ " |
| Diameter of lens..... | 8 $\frac{1}{4}$ " |
| Diameter of door opening..... | 7 $\frac{5}{8}$ " |
| Prop centers..... | 8 $\frac{1}{4}$ " |

MOUNTING

Furnished only with side prop mounting either cast or pressed steel with or without set screw as specified.

FINISH

Furnished with black and nickel all steel construction or all black all steel.



No. 14 S. L.

No. 14-S Gas Searchlight

This lamp is identical to the No. 14 Gas Head lamp except it has a swivel type bracket mounting with frog plate for attaching to dash of truck. Furnished in black and nickel all steel construction or all black all steel.

Model No. 561 Gas Tail Lamp

A very substantial and attractive gas tail lamp equipped with large ruby lens and white side lens for illuminating license bracket. Can be furnished with combination prop on back or $\frac{3}{8}$ " bolt type of mounting. The lamp is well ventilated and has a very low hood, allowing it to fit in small spaces. Equipped with $\frac{3}{8}$ " gas tip and angle connection on outside of lamp.



No. 561

DIMENSIONS

| | |
|-------------------------------|-------------------|
| Diameter of body..... | 3 $\frac{3}{4}$ " |
| Diameter of door..... | 4 $\frac{5}{8}$ " |
| Depth overall..... | 5 $\frac{1}{2}$ " |
| Diameter of lens..... | 3 $\frac{1}{2}$ " |
| Diameter of door opening..... | 3 $\frac{3}{8}$ " |
| Diameter of white lens..... | 2 $\frac{1}{8}$ " |

FINISH

All black, all steel.

Model No. 562 Parking Lamp

A very useful lamp as a parking light on trucks used for city delivery at night. Has same general dimensions and construction as our No. 561 gas tail lamp except that it is furnished with $\frac{3}{8}$ bolt or combination prop mounting on side of lamp. May be furnished for mounting on either left or right hand side of car. The front lens is a white semaphore and the rear lens is a ruby semaphore.



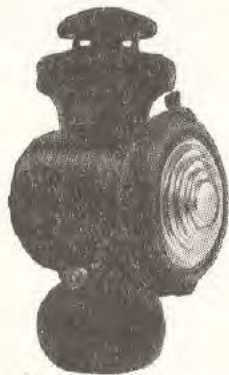
No. 562

FINISH

All black, all steel construction.

Model No. 540 Oil Side Lamp

A very serviceable side light with clear white semaphore lens and single bolt mounting in rear of lamp. Fits all models of Ford cars since 1915 except those with starters. Guaranteed to stay lighted under any conditions.



No. 540

FINISH

All black, all steel.

DIMENSIONS

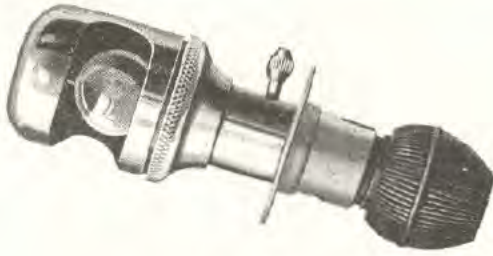
| | |
|----------------------------|-------------------|
| Extreme height..... | 9 $\frac{1}{2}$ " |
| Depth..... | 5 $\frac{1}{4}$ " |
| Diameter of front..... | 4 $\frac{1}{4}$ " |
| Diameter of semaphors..... | 3 $\frac{1}{4}$ " |

Model No. 560 Oil Tail Lamp

This lamp is identical in construction with our No. 540 oil side lamp except that it has a ruby semaphore lens in the door and a white lens in the side for illuminating license bracket. Furnished with combination prop or single bolt in rear of lamp for mounting on Ford cars without starter. Regular finish is black, all steel construction. Dimensions are the same as No. 540.



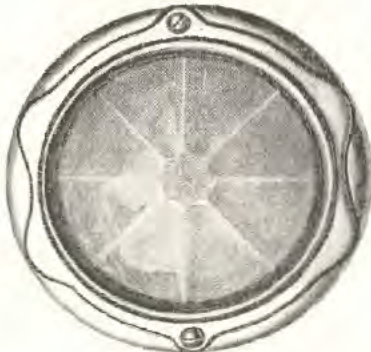
No. 560



No. 31

Model No. 31 Dash and Speedometer Lamp

A well constructed all brass dash lamp. Highly nickel plated and polished. Furnished either with single or double contact bulb. Unless otherwise specified, 6/8 volt, 2 C. P., single contact bulb furnished.



No. 40

Model No. 40 Dome Lamp

An attractive dome lamp for equipment or replacement service. Heavy gauge brass nickel plated door and reflector. Furnished with single contact 6/8 volt, 21 C. P. unless otherwise specified.

REPAIR PARTS FOR BROWN LAMPS

Headlight Wiring Assembly WA-30 and WA-31

Single and double bulb wiring assemblies with angle nut for use with offset screw type focusing adjustment.

WA-30 Single bulb, single contact outfit.

WA-31 Double bulb, single contact outfit.

These two wiring outfits are used on all Brown Lamps with offset focusing screw.

S-1 Body or dimmer socket for above assembly, single contact

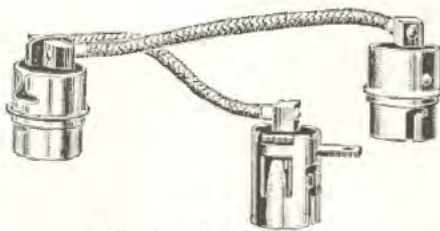
S-12 Main Socket, single contact for above assembly

S-21 Double contact, body socket for above assembly

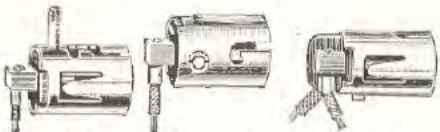
WD-50 Dimmer bulb wire

WD-51 Main Bulb wire

S-21 and S-1 are also used on Side Light No. 430.



W. A. No. 30 and 31



No. S-12

No. S-1

No. S-21

Headlight Wiring Assembly No. WA-32 and WA-33

For use on Headlights with center draw-rod type of focusing adjustment. This outfit is for use on all lamps of this type manufactured after June 1, 1924.

WA-32 Single bulb, single contact outfit

WA-33 Double bulb, single contact

S-32 Main bulb socket, single contact

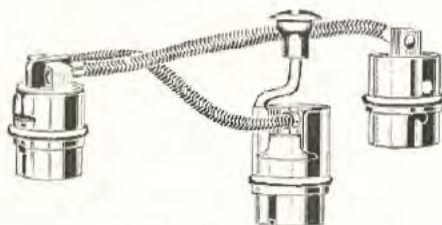
S-33 Main bulb socket, double contact

S-1 Body or dimmer socket, single contact

S-21 Double contact body socket

WD-50 Dimmer bulb wire

WD-51 Main bulb wire

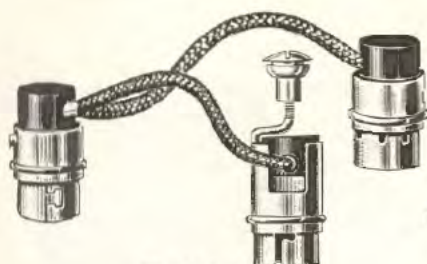


No. W. A. 32 and 33



No. S-32

See Yellow Sheets For Directions For Ordering and Prices.



No. W. A. 34

Headlight Outfit WA-34, WA-35, WA-36 and WA-37

Headlight outfits of the center type draw rod used on all single and double contact lamps of this type manufactured prior to June 1, 1924.

- WA-34 Single bulb, single contact wiring assembly
- WA-35 Double bulb, single contact wiring assembly
- WA-36 Single bulb, double contact wiring assembly
- WA-37 Double bulb, double contact wiring assembly
- S-14 Main bulb socket, single contact
- S-15 Body and dimmer socket, single contact
- S-16 Body and dimmer socket, double contact
- S-3 Main bulb socket, double contact
- WD-52 Dimmer wire
- WD-53 Main bulb wire



No. S-14



No. S-15



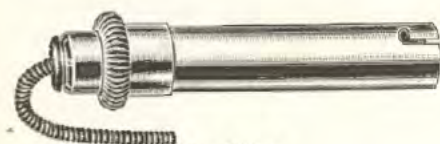
No. S-16



No. 201-B

Spotlight Socket No. 201-8

Complete socket and switch for use on all types of our No. 201 Spotlight.



No. 200-6

Spotlight switch No. 200-6 combined socket and switch for use on all of our model 200 Spotlights.

Main bulb sockets for No. 800 Electric headlights and No. 1300 elect searchlights Single Contact S-43; Double Contact S-44.

INFORMATION REQUIRED ON ORDERS

When ordering repair parts give catalog number of lamp for which parts are wanted, also complete information as to mounting, etc.

When ordering lamps for use on some particular car give year, model, make, and whether open or closed. If possible measure the mounting and if corresponding type is shown on page 6, order by catalog number, giving voltage, single or double bulb, finish and material required for bodies, doors and reflectors.

See Yellow Sheets For Directions For Ordering and Prices