

SEPTEMBER

1925

Ford

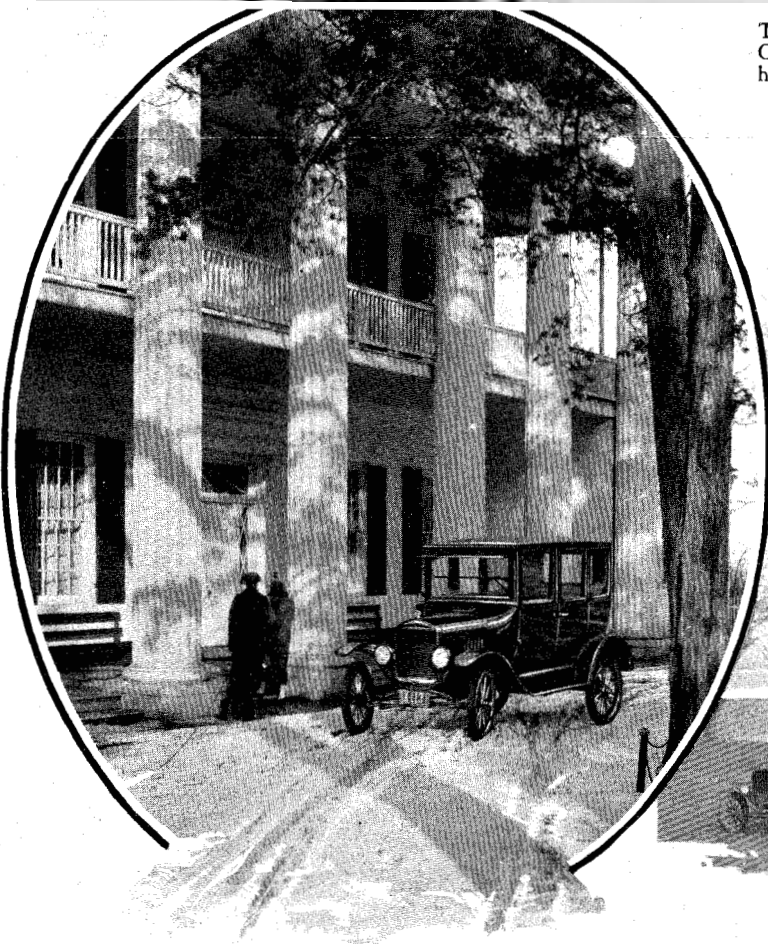
PICTORIAL



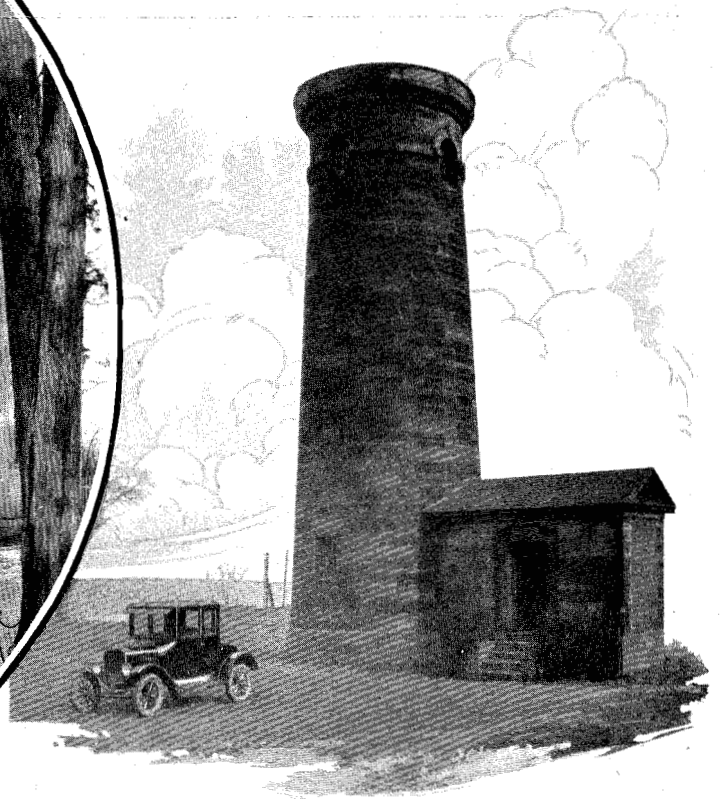
Mushroom Rock on the
Columbia River Highway
near Portland, Oregon.



The Porter's Lodge, entrance to the campus of the College of Charleston, Charleston, S. C., one of the oldest institutions of higher learning in the south. The college was established in 1785. The porter's lodge was erected in 1850.



The "Hermitage," homestead of President Andrew Jackson attracts many visitors every year. It is located approximately 12 miles out of Nashville, Tenn.



This old light house is a favorite spot for tourists visiting in Erie, Pa. First built in 1818, rebuilt of brick in 1858 and rebuilt of stone in 1867, the old tower stands today bare, its light gone, but still an object of interest to visitors.

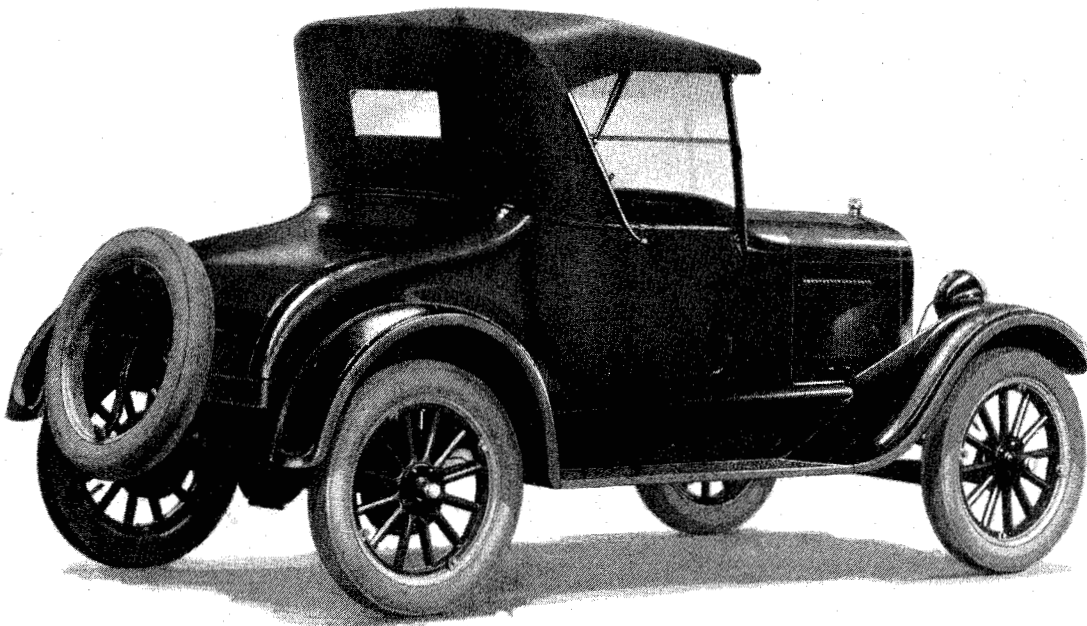


Tourists in Alaska find the Mendenhall Glacier near Juneau an inspiring sight.

The oldest building in America at St. Augustine, Fla. It was used as a chapel by the monks of St. Francis until 1590.



Distinguished oarsmen, these. They comprise the University of Washington crew. Coxswain Wuthenow is perched on the radiator of the Ford car.



The Runabout

Ford



Now Re

**Lowered C
Closed Cars i
Stream-line All-s**

No Increase



The Tudor Sedan



The Runabout

Color—Black. All-steel body. Double ventilating windshield. Wide rear deck with compartment space greatly increased. Tool box under seat. Standard equipment includes four cord tires, storm curtains opening with both doors, windshield wiper and nicked headlamp rims. Starter and demountable rims \$85 extra. Balloon tires \$25 extra.

Price f. o. b. Detroit **\$260**

The Tudor Sedan

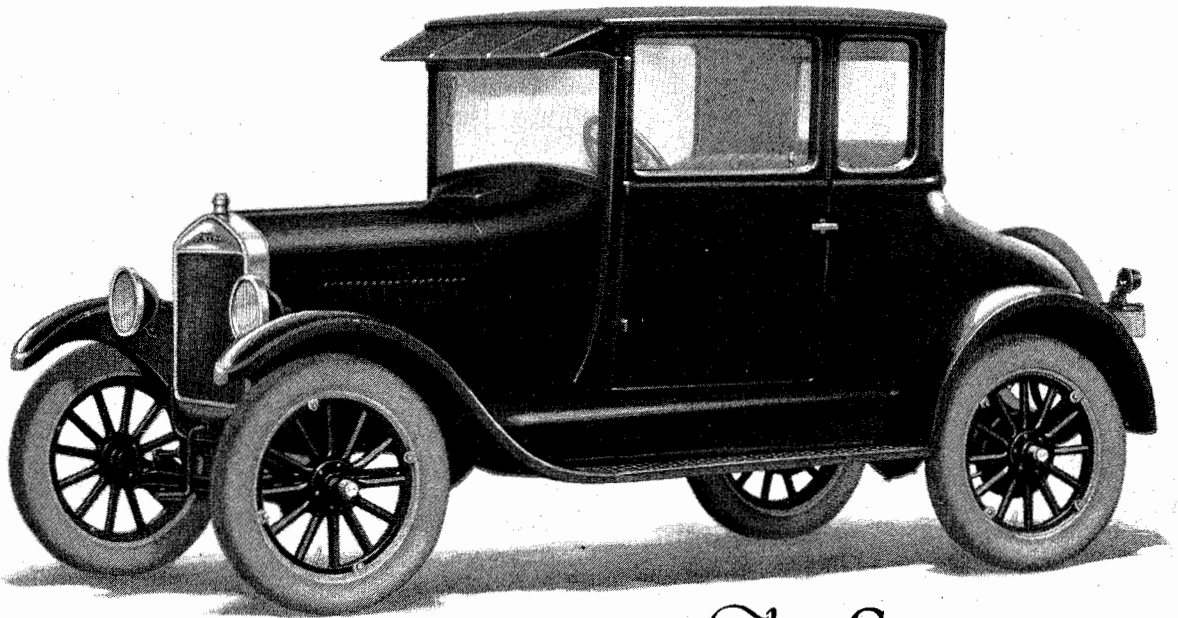
Color—Channel Green with upholstery to harmonize. All-steel body. Nicked radiator and headlamp rims. Lower seats; both front seats tilting. One-piece ventilating windshield. Leather-cloth sun visor of new design closed at both ends. Standard equipment includes starter, four cord tires, demountable rims, windshield wiper, rear view mirror and dash lamp.

Balloon tires \$25 extra. Price f. o. b. Detroit **\$580**

7
C
A
C
d
s
ir
sh
B

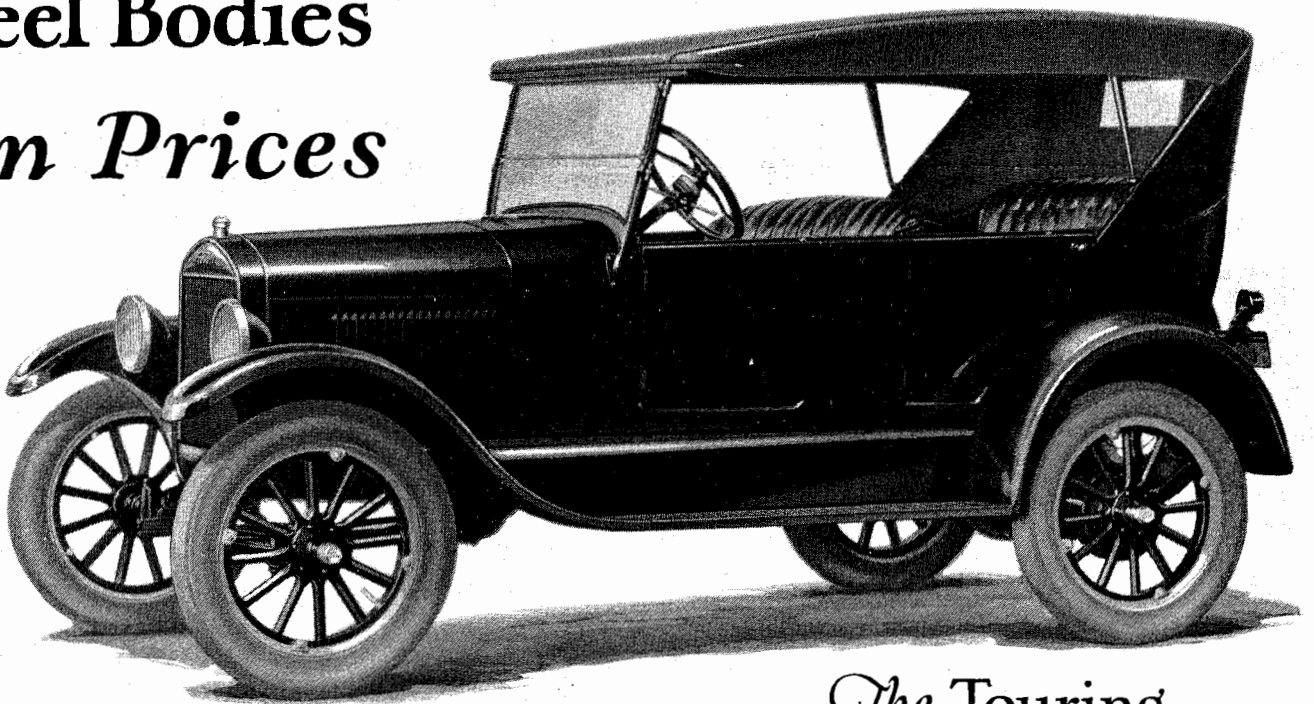
Ford

Ready



The Coupe

**Chassis
in Color
All-steel Bodies
and
Low in Prices**



The Touring

The Coupe

Color—Channel Green with upholstery to harmonize. All-steel body. Nickered radiator and headlamp rims. One-piece ventilating windshield. Unusually wide rear deck with doubled compartment capacity. Leather-cloth sun visor, closed at both ends. Standard equipment includes starter, four cord tires, demountable rims, windshield wiper, rear view mirror and dash lamp. **\$520**
Balloon tires \$25 extra. Price f. o. b. Detroit

The Touring

Color—Black. All-steel body of streamline design. Double ventilating windshield. Ford leather-cloth one-man top. Tool box under front seat. Standard equipment includes four cord tires, weather-proof side curtains opening with all doors, windshield wiper and nickered headlamp rims. Starter and demountable rims \$85 extra. Balloon tires \$25 extra.

Price f. o. b. Detroit **\$290**



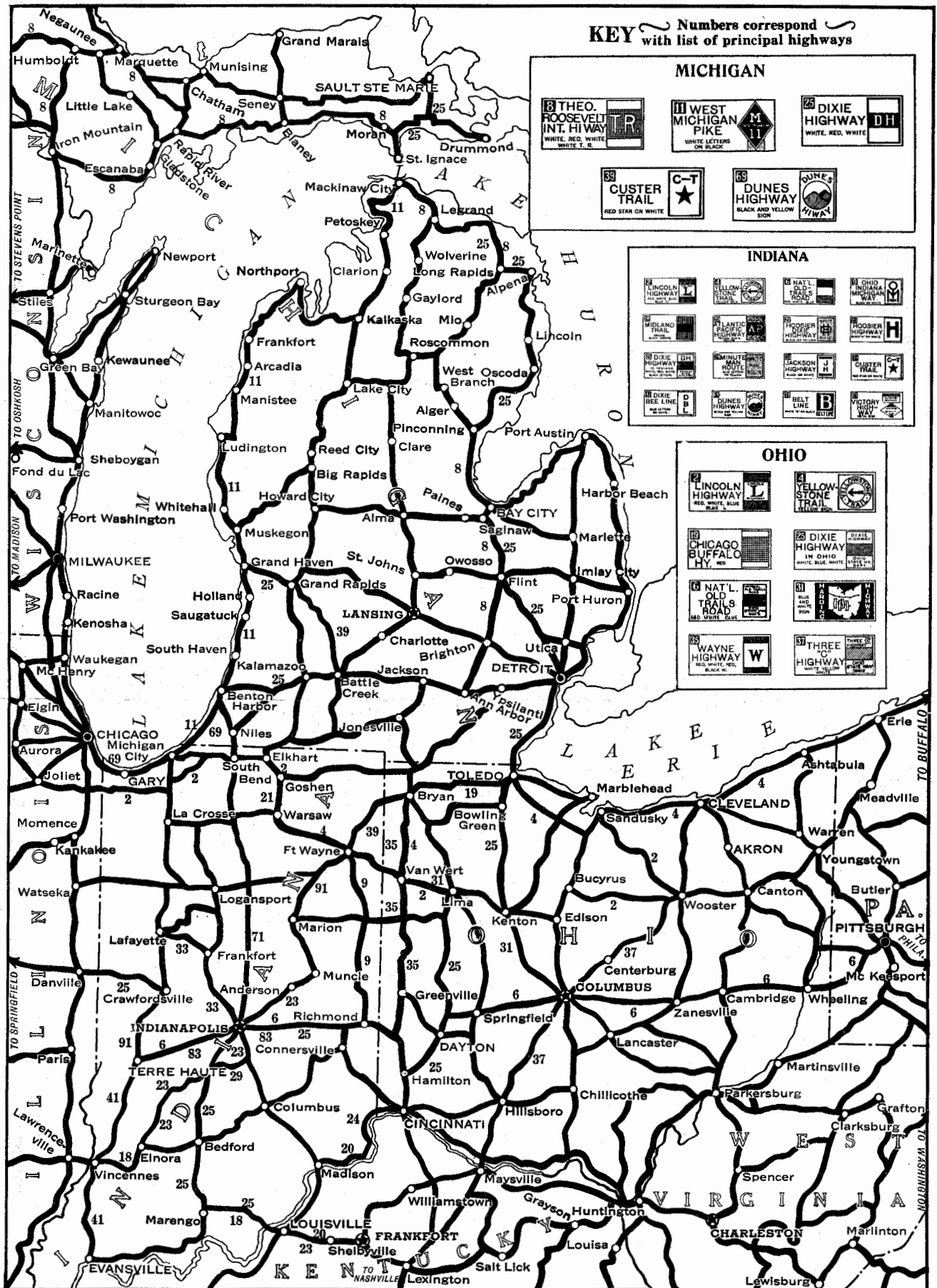
The U. S. Overhaul of the Ford fleet in the government canal locks connecting Puget Sound with the waters of Lake Washington at Seattle.



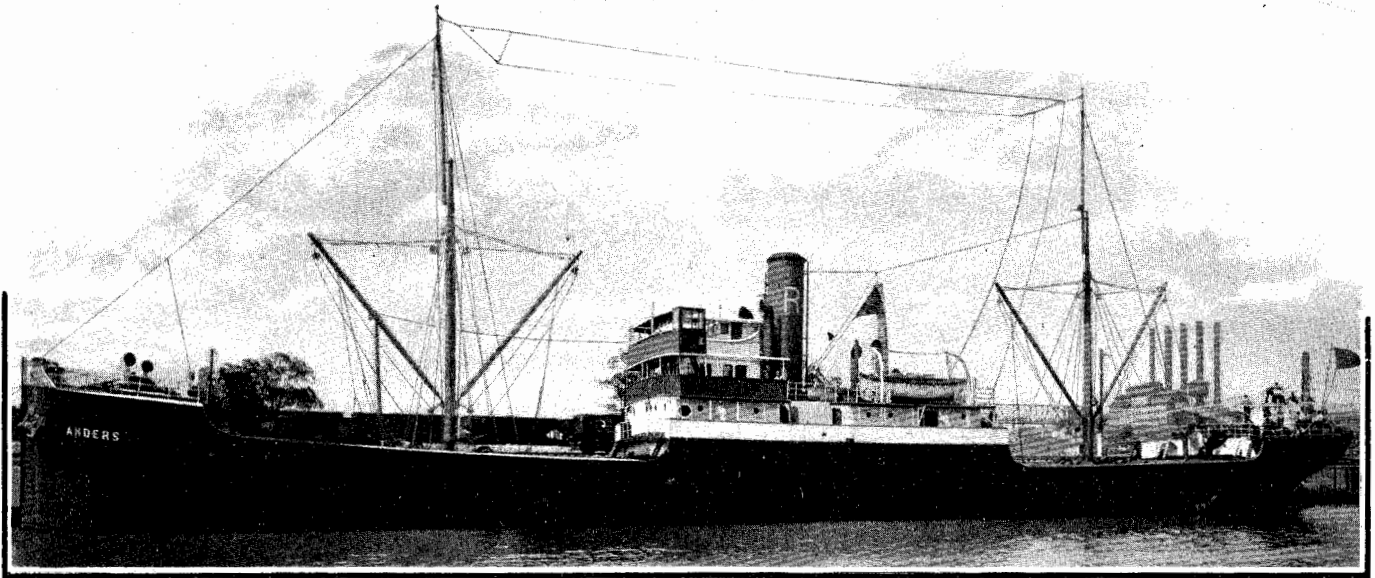
One of the Ford cars in the French Quarter, New Orleans.

Along, Government Pavilion at the British Empire Exhibition, Wembley, England and at right, crowds watch building of Ford cars at the exhibition where a special assembly line operated daily.

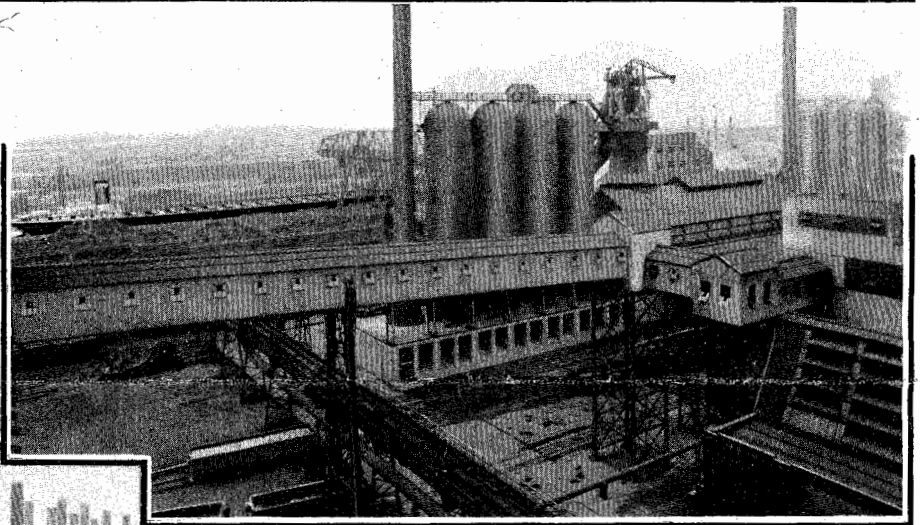




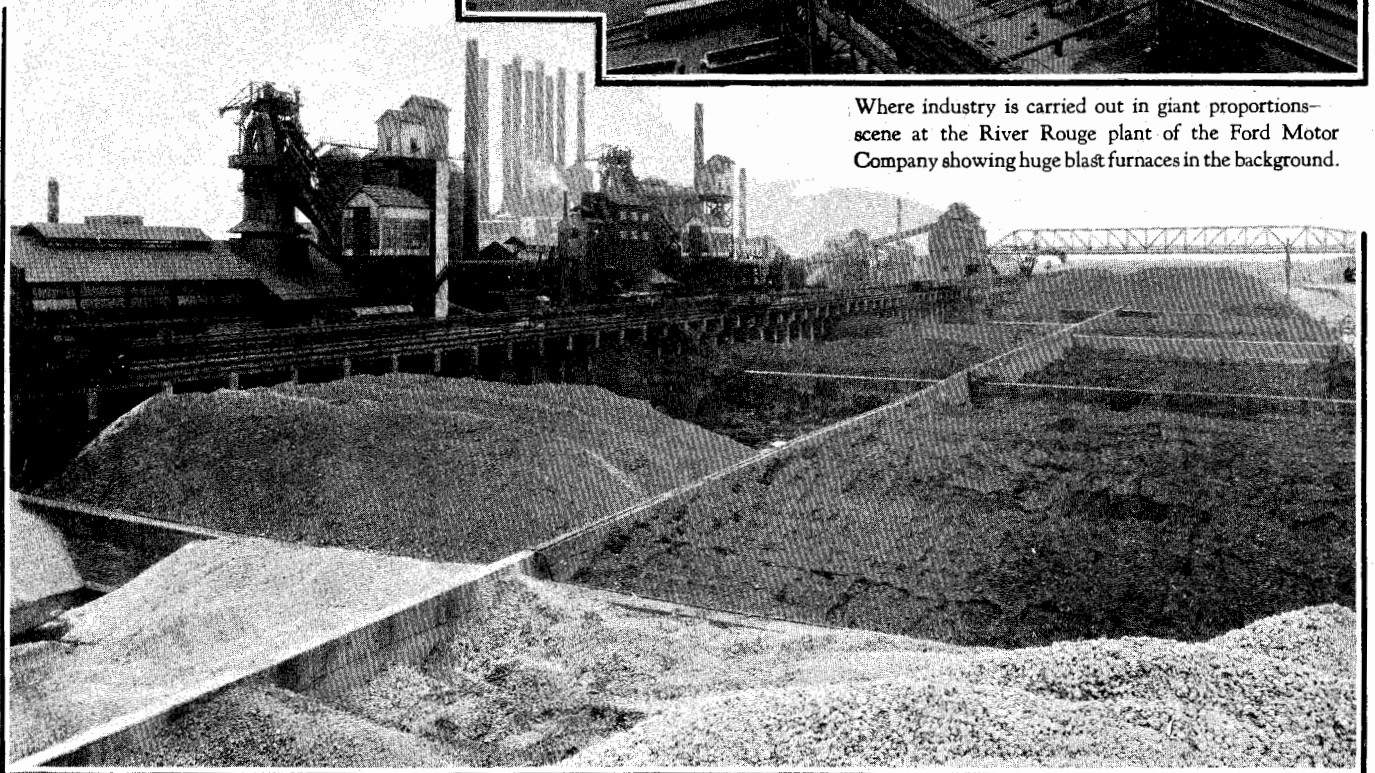
"FORD TRAILS" include the principal touring routes in America. In subsequent issues of "Ford Pictorial" other sections of the country will be shown.



The S. S. Anders, Belgian Vessel, docked at the River Rouge plant of the Ford Motor Company, with a cargo of steel rails. The ship sailed from Antwerp and the cargo was the first ever brought direct from Europe to Detroit.



Where industry is carried out in giant proportions—scene at the River Rouge plant of the Ford Motor Company showing huge blast furnaces in the background.



Great bins at the River Rouge plant of the Ford Motor Company where tons upon tons of iron ore and limestone are stored before going to the blast furnaces.