



**Martin-Parry**

**STANDARDIZED  
COMMERCIAL  
BODIES FOR**

**FORDS**

**Dealers  
Catalog  
1925**

**MARTIN-PARRY CORPORATION**  
*Central Offices - York, Pa.*

COMMERCIAL BODIES  
FOR FORDS

A Dealers Catalogue  
of Standardized Body  
Styles for the Ford  
Model T Chassis  
and the Ford Ton  
Truck Chassis

**Martin-Parry**

# Martin-Parry Service Insurance

*A Guarantee  
without strings*

WE will furnish without cost a new part for any broken part of a Martin-Parry body, except glass or hardware, if breakage occurs during the first year of service. All that is necessary is to bring the body to one of our branches or service stations for inspection.

**MARTIN-PARRY  
CORPORATION**

## Martin-Parry

### Nation-Wide Service

*Martin-Parry Assembling Plants Serve  
Dealers and Owners*

IN all the important distributing centers of the country. Martin-Parry Assembling Plants contribute to the efficiency and economy of distribution which have made it possible to offer the highest grade commercial bodies at very low prices.

On the following pages are illustrations showing each model in this standardized line, mounted on Ford Chasses.

These bodies may be obtained through any of the following Martin-Parry Assembling Plants or Distributors.

## Martin-Parry CORPORATION

Largest Commercial Body Builders in the World

GENERAL OFFICES: YORK, PENNA.

### FACTORIES

Indianapolis, Ind.    York, Penna.    Lumberton, Mis.

### ASSEMBLING PLANTS

(Direct Factory Branches of Martin-Parry Corp.)

Albany	Hartford	Oakland, Cal.
Atlanta	Houston	Philadelphia
Baltimore	Indianapolis	Pittsburgh
Boston	Jacksonville	Portland, Ore
Buffalo	Kansas City	St. Louis
Chicago	Los Angeles	San Francisco
Cincinnati	Memphis	Seattle
Cleveland	Milwaukee	Spokane
Dallas	Minneapolis	Toledo
Detroit	New Orleans	York, Penna.
Flint		
	Greater New York	{ Bronx, New York
		{ Long Island City, N.Y.
		{ Kearny (Newark), N.J.

### DISTRIBUTORS

Akron, O.	Richmond, Va.
Akron-Selle Co.	Benj. T. Crump Co.
Columbus, O.	Springfield, Mass.
Universal Body Co.	Smith Carriage Co.
Denver, Colo.	Washington, D.C.
Timpte Bros.	S. J. Meek's Son
Pittston, Pa.	Worcester, Mass.
Martin-Parry Body Sales Co.	Worcester Commercial Body Co.

## Martin-Parry

### A New and Distinctive Line of Martin-Parry Bodies

**A**s the result of forty-two years' experience in the building of high-grade commercial bodies, Martin-Parry has developed an entirely new line which, in design, equipment and finish, are true aristocrats of the commercial field.

Every detail of construction has been refined and improved, every new feature has been put to the most exhaustive tests in actual service; and Martin-Parry standards of quality have been maintained throughout.

Because of Martin-Parry's tremendous production, expert engineering and efficient distribution, and the increased volume which these new models will develop, they are without doubt the most closely-priced bodies in the commercial car field.

### New Features

Each of the innovations which characterize this new line of bodies has been developed by Martin-Parry engineers to meet a definite need on the part of the customer.

**THE NEW MARTIN-PARRY VESTIBULE FRONT**, which makes its initial appearance in these new bodies, provides exceptional comfort and convenience for the driver. *This new feature permits easy entrance to the driver's seat from the left-hand side.* The front side section affords protection to the occupants even when the doors are open.

**THREE TYPES.** Bodies and Cabs are now designated as Type A: Open Front; Type B: with Hinged Vestibule Doors, and Type C: with the new Martin-Parry Roller Doors (see illustrations). Both Hinged and Roller Doors carry the silent, easily operated Martin-Parry Drop Sash.



TYPE A WITHOUT VESTIBULE DOORS



TYPE C—WITH ROLLER DOOR OPEN

**MARTIN-PARRY ROLLER DOORS** as supplied with "Type C" are supported by rollers and operate so easily and smoothly under all conditions that comparison with competitive "sliding" doors is impossible. The top suspension is covered by a black enameled, pressed steel weather shield which adds greatly to the appearance of the body. The door slides forward, as illustrated, so as not to cover the lettering on the panel. At the extreme open position, it does not obscure the driver's vision in the least. Martin-Parry Patented Double Acting Door Locks hold the door securely in either open or closed positions.

**THE DOUBLE VENTILATING WINDSHIELD** insures a thorough distribution of cool air and, owing to its rabbeted construction, is watertight and will not rattle when closed. New design also gives the driver considerably greater vision.

**A PRESSED STEEL SUN VISOR** attractively ribbed to avoid rattling, and with rain trough, handsomely finished in black enamel, is standard equipment on all models.

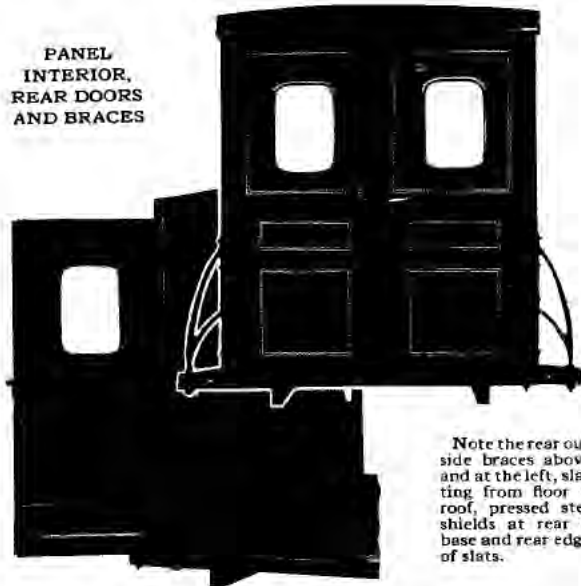
**A HEAVY-DUTY MARTIN-PARRY TIRE CARRIER** is also standard equipment. Carrier is of the three-arm type, finished in black enamel, and is an integral part of the body, firmly mounted on the base (not supported by the panel), as illustrated. One tire carrier, mounted on the left side, is regular equipment on bodies for the light chassis, as noted. Ton truck bodies are equipped with two carriers, one on either side, to provide for rear as well as front spare tires. If desired, a Martin-Parry Oakes lock of special design may be added at a slight additional cost.

**TWO OPTIONAL COLORS** are available on the 120, 220 or 320—Martin-Parry Pekin Green or Martin-Parry Wine. The former, a sparkling blue green, is unusually distinctive as compared with ordinary commercial body finishes. All other bodies are furnished in Pekin Green only. C. A. Willey paints and finish system are used throughout, as on many of the highest priced pleasure cars, and will not blister or peel off. On the panel bodies, the finish is flowed on, and is free from ripples and brush strokes.

**METAL BRACES** are of new design, combining unusual strength with minimum of weight. Bolts are used in place of screws wherever a strain may be exerted. Consequently, Martin-Parry Bodies are sway and squeak proof. Pressed steel plates protect front and rear edges of the side slats and rear of base. (See illustration on page 6.)

# Martin-Parry

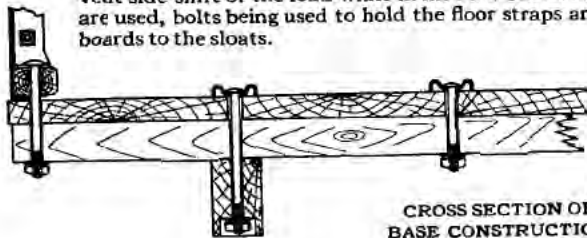
PANEL  
INTERIOR,  
REAR DOORS  
AND BRACES



Note the rear outside braces above, and at the left, slatting from floor to roof, pressed steel shields at rear of base and rear edges of slats.

PANELS are of highest grade Armco automobile sheet steel stretcher-levelled and held rigid by Martin-Parry patented anti-rattler strips.

BASE CONSTRUCTION is of the regular Martin-Parry design with expansion joints between floor boards which positively prevent warping or swelling out of level. Floor straps, running from front to rear covering the joints, are corrugated to prevent bolt heads from catching on the load, and also prevent side-shift of the load while in motion. No screws are used, bolts being used to hold the floor straps and boards to the slats.



CROSS SECTION OF  
BASE CONSTRUCTION

# Martin-Parry

## Old and New Model Numbers

The following list shows the new model numbers and the corresponding numbers of the old line bodies which they replace. It will be noted that a number of new models have been added where definite needs have been encountered.

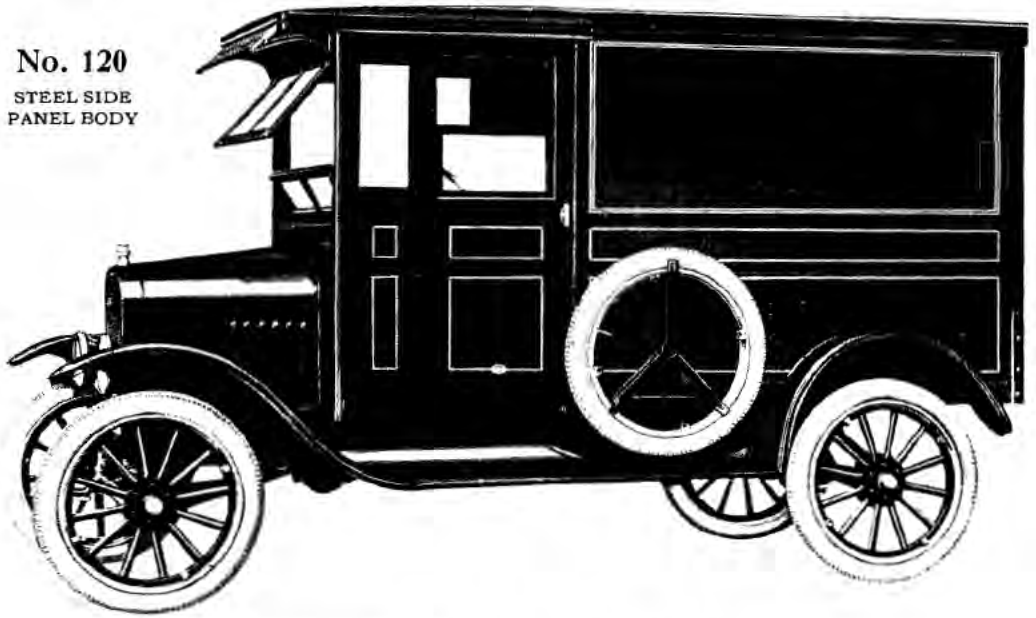
### For the Model "T" Chassis

Pages	New Model Number	Old Model Number	Pages	New Model Number	Old Model Number
8-9	120	...	20-21	225	164
10-11	220	180	22-23	228	168
12-13	221	162	22-23	229	169
14-15	223	164	22-23	230	...
16-17	222	166	24-25	115	170
18-19	224	165	24-25	171	171

### For the Ton Truck Chassis

SINGLE UNIT BODIES					
26-27	320	260	34-35	324	265
28-29	321	261	36-37	325	266
30-31	323	264	38-39	326	263
32-33	322	262			
TWO-UNIT BODIES					
40-41	421	269	44-45	426	271
42-43	422	267	46-47	429	...
TWO-UNIT UNIVERSAL PLATFORM BODIES					
48-49	400	250	52-53	424	254
50-51	423	252	54-55	425	256
TWO-UNIT GRAIN BODIES					
56-57	427	280			
ALL-STEEL DUMP BODIES					
58-59	1000	350	60-61	2000	351
EXTENSION FOR THE TON TRUCK					
64-65	4000	.....			
TWO-UNIT 128" PLATFORM BODIES FOR THE EXTENSION					
66-67	450	.....	68-69	454	.....
66-67	453	.....			
CABS, SEATS, WINDSHIELDS					
70-71	420A	20A	72-73	431	...
70-71	420B	20B	72-73	430	70
70-71	420C	.....	74-75	686	1

**No. 120**  
**STEEL SIDE**  
**PANEL BODY**



TYPE C—WITH MARTIN-PARRY ROLLER DOORS

**No. 120 Steel Side Panel Body**

*On the Ford Model "T" Chassis*

**SPECIFICATIONS**

Style No.	Code Word	Inside Back of Seat		Height of Top		Painting	Approximate Weights <i>Including New Equipment</i>	
		Length	Width	Floor to Roof	Rear Opening		Net	Crated
120A	Fabric	58	44	54	50	M.P.	650	890
120B	Falcon	58	44	54	50	Pekin Green or	700	965
120C	Fang	58	44	54	50	M.P. Wine	715	980

*Always use telegraph code when wiring orders to us. It insures accuracy—saves time—saves money.*

**PRICES DELIVERED**

120A (Open Front) \$	.....
120B (Hinged Doors)	.....
120C (Roller Doors)	.....
Trays (each) (Pg. 78)	.....
Partition (Pg. 78)	.....
Chassis	.....
<b>Total</b> ..... \$	.....

**A** COMPACT body, for light chasses, dust and weather proof, with 58-inch loading space behind driver's seat for fast delivery service.

Regular equipment includes double ventilating windshield, sun visor, tire carrier, double steel doors in rear, two-section spring cushions, lazyback, toe boards, lamp and license bracket, bolts for attaching body to chassis, and rear fenders.

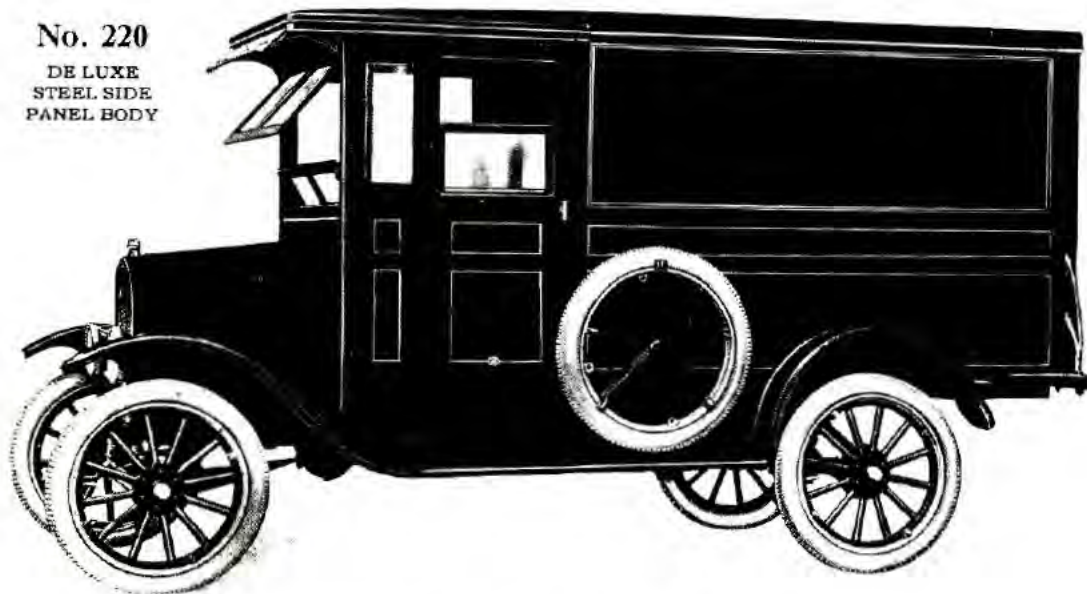


TYPE A  
 OPEN FRONT

Sold with Martin-Parry Service Insurance—See page 2



No. 220  
DE LUXE  
STEEL SIDE  
PANEL BODY



TYPE C—WITH MARTIN-PARRY ROLLER DOORS

## No. 220 De Luxe Steel Side Panel Body

On the Ford Model "T" Chassis

### SPECIFICATIONS

Style No.	Code Word	Inside Back of Seat		Height of Top		Painting	Approximate Weights Including New Equipment	
		Length	Width	Floor to Roof	Rear Opening		Net	Crated
220A	Father	68	44	54	50	M-P Pekin Green or M-P Wine	690	940
220B	Fawn	68	44	54	50		740	1015
220C	Ferry	68	44	54	50		755	1030

Always use telegraph code when wiring orders to us. It insures accuracy—saves time—saves money.

#### PRICES DELIVERED

220A (Open Front) \$

220B (Hinged Doors)

220C (Roller Doors)

Trays (each) (Pg. 78)

Partition (Pg. 78)

Chassis

Total

**T**HE aristocrat of panel bodies for light chasses, with 68-inch loading space behind driver's seat. Steel side panels carry a hand-somely embossed medallion for artistic paint work.

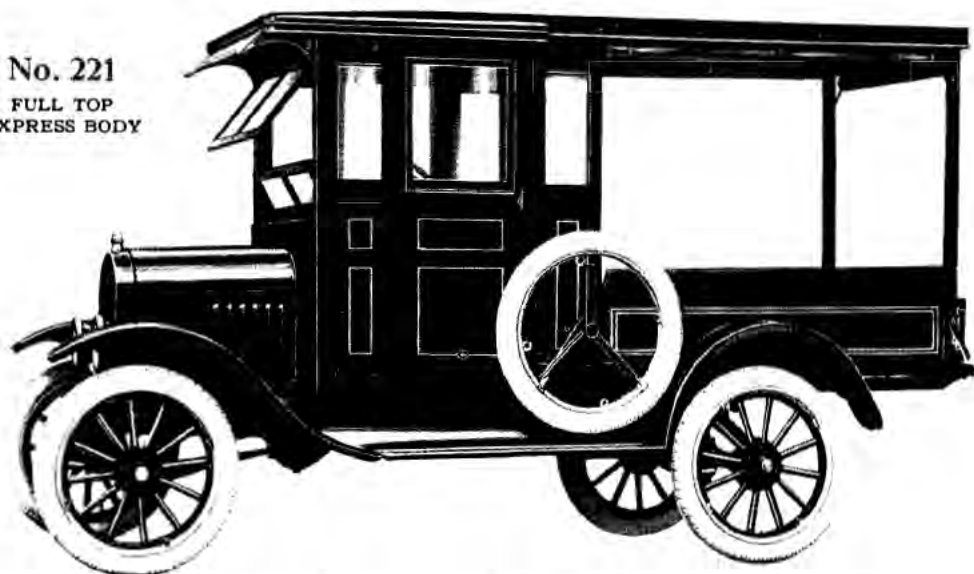
Regular equipment includes double ventilating windshield, sun visor, tire carrier, double steel doors in rear, two-section spring cushions, lazyback, toe boards, lamp and license bracket, bolts for attaching body to chassis, and rear fenders.



TYPE A  
OPEN FRONT

Sold with Martin-Parry Service Insurance—See page 2

No. 221  
FULL TOP  
EXPRESS BODY



TYPE C—WITH MARTIN-PARRY ROLLER DOORS

## No. 221 Full Top Express Body

On the Ford Model "T" Chassis

### SPECIFICATIONS

Style No.	Code Word	Inside Back of Seat		Panel	Height of Top		Painting	Approximate Weights <i>Including New Equipment</i>	
		Length	Width		Floor to Roof	Rear Opening		Net	Crated
221A	Field	68	44	10	54	50	M-P	540	795
221B	Fife	68	44	10	54	50	Pekin	590	870
221C	Fig	68	44	10	54	50	Green	605	885

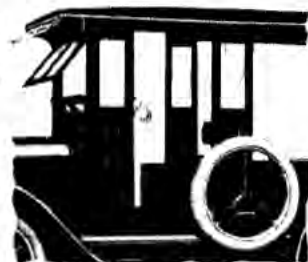
*Always use telegraph code when wiring orders to us. It insures accuracy—saves time—saves money.*

#### PRICES DELIVERED

221A (Open Front)	\$
221B (Hinged Doors)	
221C (Roller Doors)	
Screen Sides (Pg. 76)	
Screen Front (Pg. 76)	
Chassis	
Total	\$

**F**ULL top express body with 10-inch side panels especially adapted for general delivery service and for light freight and express hauling.

Regular equipment includes double ventilating windshield, sun visor, tire carrier, curtains for sides and rear of body, drop endgate with chains, two-section spring cushions, lazy-back, toe boards, bolts for attaching body to chassis, lamp and license bracket, and rear fenders.

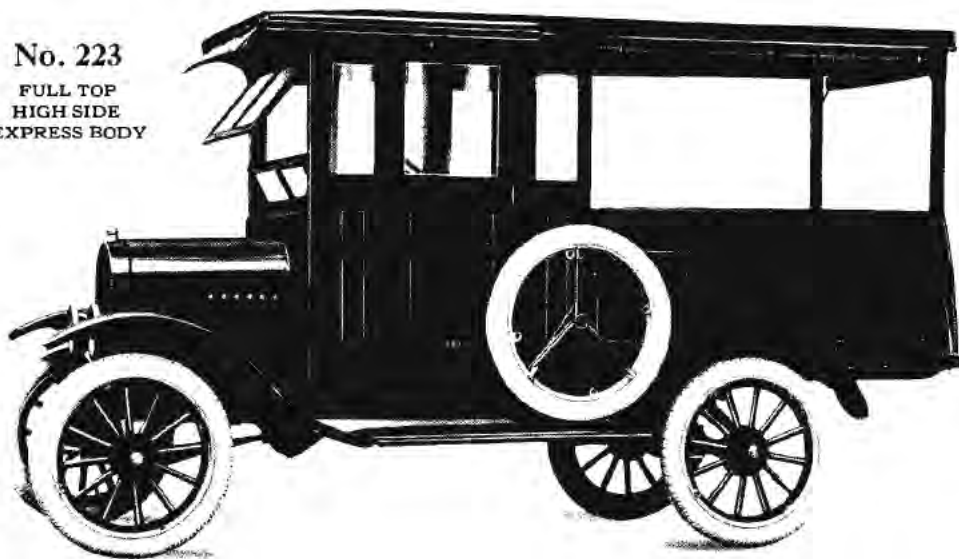


TYPE A  
OPEN FRONT

Sold with Martin-Parry Service Insurance—See page 2



No. 223  
FULL TOP  
HIGH SIDE  
EXPRESS BODY



TYPE C—WITH MARTIN-PARRY ROLLER DOORS

## No. 223 Full Top, High Side Express Body

On the Ford Model "T" Chassis

### SPECIFICATIONS

Style No.	Code Word	Inside Back of Seat		Panel	Height at Top		Painting	Approximate Weights Including New Equipment	
		Length	Width		Floor to Roof	Rear Opening		Net	Crated
223A	Finch	68	44	20	54	50	M-P	580	835
223B	Finger	68	44	20	54	50	Pekin	630	910
223C	Fish	68	44	20	54	50	Green	645	925

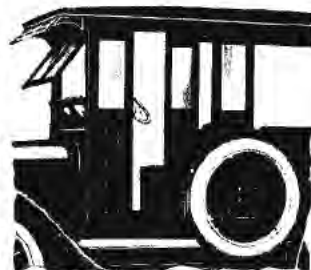
Always use telegraph code when wiring orders to us. It insures accuracy—saves time—saves money.

### PRICES DELIVERED

223A (Open Front)	.....
223B (Hinged Doors)	.....
223C (Roller Doors)	.....
Screen Sides (Pg. 76)	.....
Screen Front (Pg. 76)	.....
Chassis	.....
Total	.....

**F**ULL top express body, similar to the No. 221 but with 20-inch side panels for high loading of bulky merchandise.

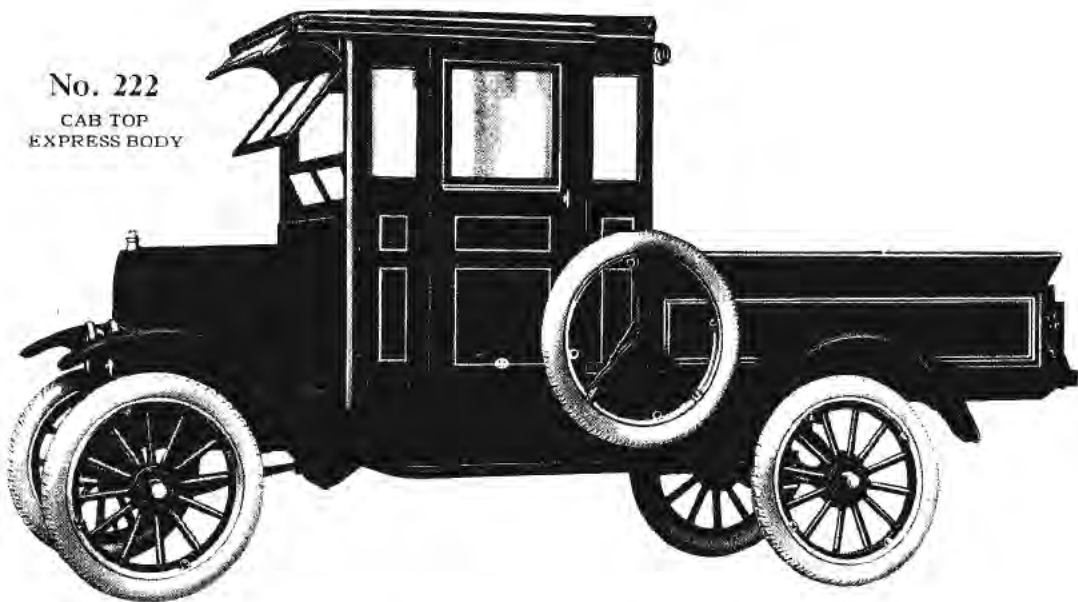
Regular equipment includes double ventilating windshield, sun visor, tire carrier, curtains for sides and rear of body, drop endgate with chains, two-section spring cushions, lazy-back, toe boards, bolts for attaching body to chassis, lamp and license bracket, and rear fenders.



TYPE A  
OPEN FRONT

Sold with Martin-Parry Service Insurance—See page 2

No. 222  
CAB TOP  
EXPRESS BODY



TYPE C WITH MARTIN-PARRY ROLLER DOORS

## No. 222 Cab Top Express Body

On the Ford Model "T" Chassis

### SPECIFICATIONS

Style No.	Code Word	Inside Back of Seat		Panel	Painting	Approximate Weights <i>Including New Equipment</i>	
		Length	Width			Net	Crated
222A	Flute	64	44	10	Martin-Parry	360	585
222B	Forum	64	44	10	Pekin	425	645
222C	Fox	64	44	10	Green	450	670

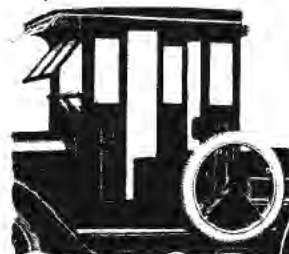
Always use telegraph code when wiring orders to us. It insures accuracy—saves time—saves money.

#### PRICES DELIVERED

222A	\$	
222B		
222C		
Chassis		
Total	\$	

**A** CAB top light express body, adapted to all kinds of light, fast delivery service that does not require protection for the load.

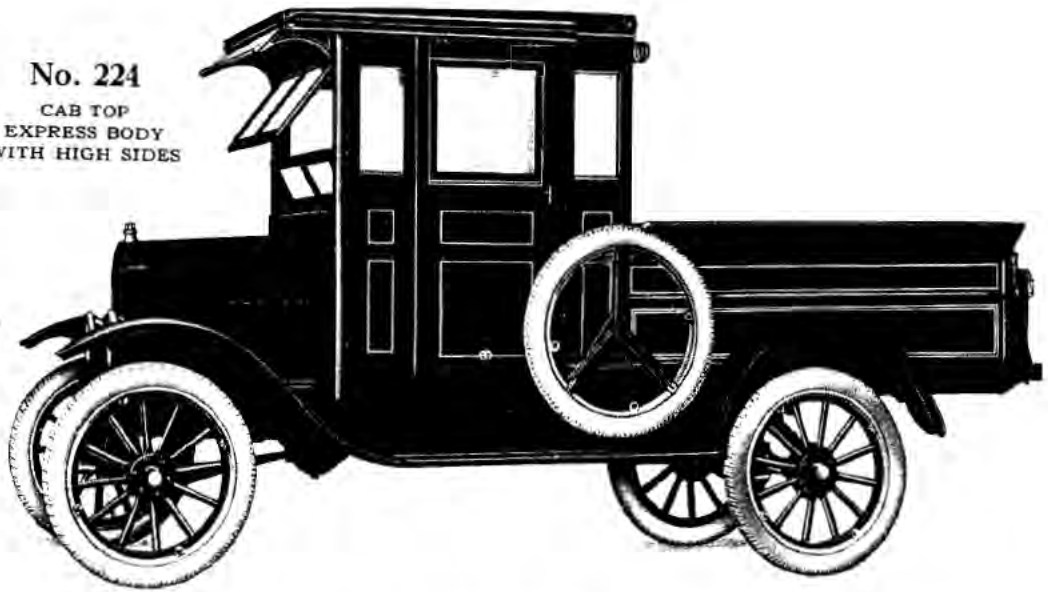
Regular equipment includes double ventilating windshield; sun visor; tire carrier; curtain or No. 913 Filler Panel back of driver's seat; drop endgate with chains; two-section spring cushions; lazyback; toe boards; bolts for attaching body to chassis; lamp and license bracket, and rear fenders.



TYPE A  
OPEN FRONT

Sold with Martin-Parry Service Insurance—See page 2

No. 224  
CAB TOP  
EXPRESS BODY  
WITH HIGH SIDES



TYPE C—WITH MARTIN-PARRY ROLLER DOORS

## No. 224 Cab Top Express Body with High Sides

On the Ford Model "T" Chassis

### SPECIFICATIONS

Style No.	Code Word	Inside Back of Seat		Panel	Painting	Approximate Weights <i>Including New Equipment</i>	
		Length	Width			Net	Crated
224A	Finch	64	44	20	Martin-Parry Pekin Green	510	745
224B	Finger	64	44	20		575	805
224C	Fish	64	44	20		600	835

*Always use telegraph code when wiring orders to us. It insures accuracy—saves time—saves money.*

#### PRICES DELIVERED

224A	\$
224B	
224C	
Chassis	
Total	\$

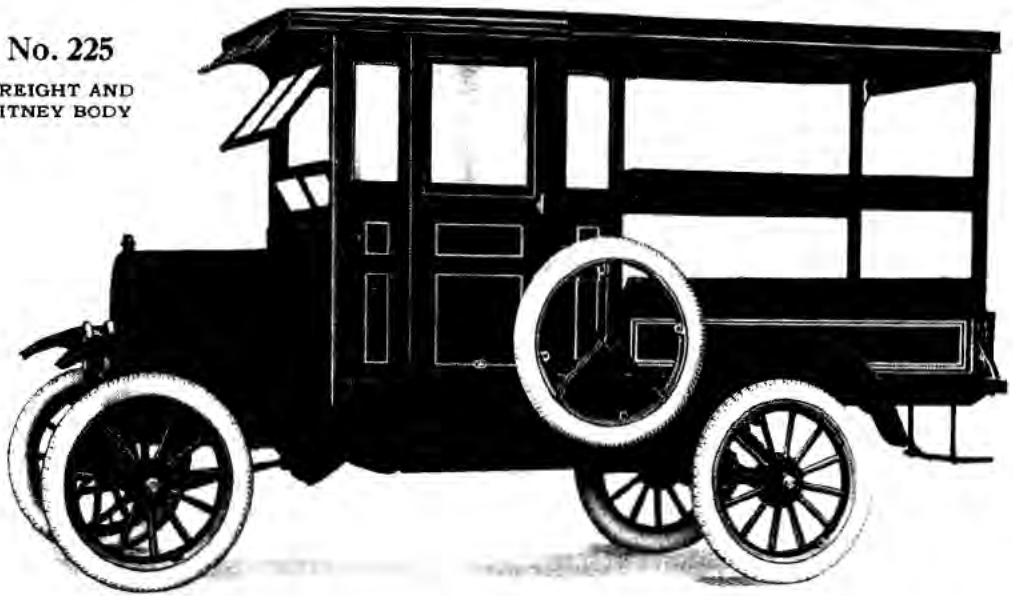
**S**IMILAR to No. 222 but with 20-inch panels for high loading of bulky merchandise. Regular equipment includes double ventilating windshield; sun visor; tire carrier; curtain or No. 913 Filler Panel back of driver's seat; drop endgate with chains; two-section spring cushions; lazy-back; toe boards; bolts for attaching body to chassis; lamp and license bracket, and rear fenders.



TYPE A  
OPEN FRONT

Sold with Martin-Parry Service Insurance—See page 2

No. 225  
FREIGHT AND  
JITNEY BODY



TYPE C—WITH MARTIN-PARRY ROLLER DOORS

No. 225 Freight and Jitney Body

On the Ford Model "T" Chassis

SPECIFICATIONS

Style No.	Code Word	Inside Back of Seat		Panel	Height of Top		Painting	Approximate Weights Including New Equipment	
		Length	Width		Floor to Roof	Rear Opening		Net	Crated
225A	Flag	68	44	10	54	50	M-P	655	920
225B	Flax	68	44	10	54	50	Pekin	725	970
225C	Flour	68	44	10	54	50	Green	750	990

Always use telegraph code when wiring orders to us. It insures accuracy—saves time—saves money.

PRICES DELIVERED

225A (Open Front) .....	\$ .....
225B (Hinged Doors) .....	.....
225C (Roller Doors) .....	.....
Excise Tax .....	.....
Chassis .....	.....
<b>Total</b> .....	<b>\$ .....</b>

**F**ULL top express body equipped with rear step and passenger seats. The seats fold up against the panels to give full width of the body for hauling baggage and freight, as illustrated at the right.

Regular equipment includes seats, rear step, and back rest, as illustrated; double ventilating windshield; sun visor; tire carrier; curtains for sides and rear of body; drop end-gate with chains; two-section spring cushions; lazyback; toe boards; bolts for attaching body to chassis; lamp and license bracket, and rear fenders.

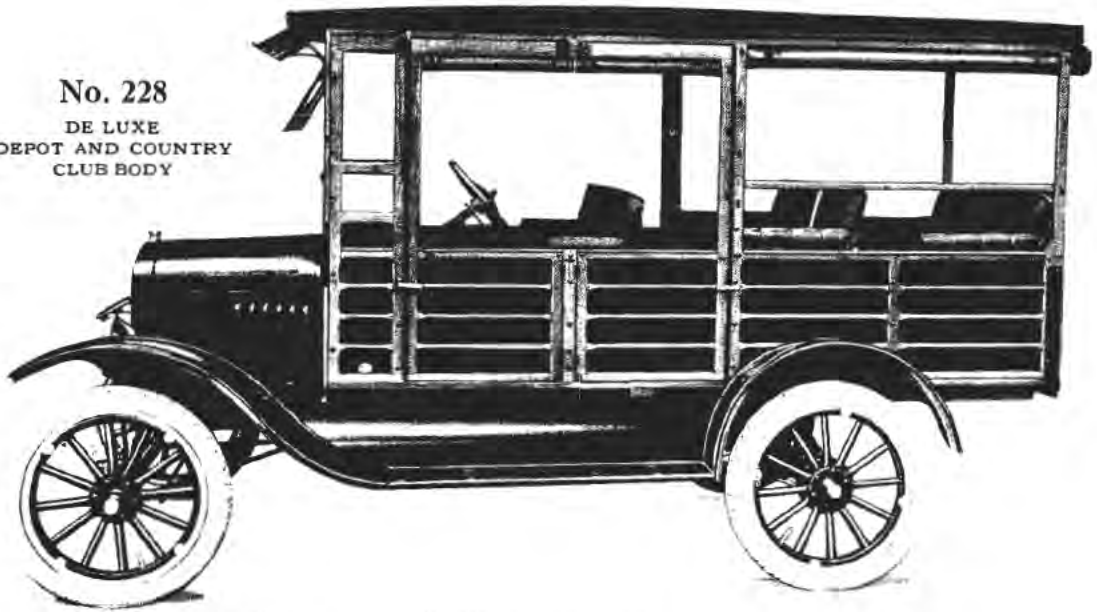


REAR VIEW

Sold with Martin-Parry Service Insurance—See page 7



No. 228  
DE LUXE  
DEPOT AND COUNTRY  
CLUB BODY



No. 229 is the same as No. 228 (above) but without center and rear seats  
No. 230 is the same as No. 228 (above) but with winter enclosure in place of curtains

No. 228 and No. 230 De Luxe Depot and Country Club Bodies  
No. 229 Fancy Express Body

On the Ford Model "T" Chassis

SPECIFICATIONS

Style No.	Code Word	Inside Back of Seat		Panel	Height of Top		Painting	Approximate Weights Including New Equipment	
		Length	Width		Floor to Roof	Rear Opening		Net	Crated
228	Fright	66	44	19	54	50	Natural Wood	675	910
229	Frock	66	44	19	54	50		575	810
230	Fringe	66	44	19	54	50		725	985

Always use telegraph code when wiring orders to us. It insures accuracy—saves time—saves money.

PRICES DELIVERED

228	\$
229	
230	
Excise Tax	
Chassis	
Total	\$

**F**RAMWORK, posts and windshields finished in natural wood—small panels in walnut. Upholstery finished in either black or fancy Spanish tan with curtains (or winter enclosure) to match. *Black will be supplied unless otherwise specified.*

Regular equipment (No. 228) includes M-P rear auxiliary springs; pressed steel sun visor; windshield wiper; rear view mirror; overhead hat rack; saddle pouches on inside of doors; robe strap back of front seat; front and rear floor mats; drop curtains with large celluloid lights and self-closing signalling aperture at driver's side; windshield; fenders, etc.



NO. 230  
PASSENGER BODY WITH  
WINTER ENCLOSURE

Sold with Martin-Parry Service Insurance—See page 2

**No. 115**  
**LIGHT EXPRESS SLIP-ON**  
**BODY**



**No. 171**  
**STEEL PANEL SLIP-ON**  
**BODY**

**No. 115 and No. 171 Slip-on Bodies**

*On the Ford Roadster*  
**SPECIFICATIONS**

Style No.	Code Word	Inside Back of Seat		Panel	Flare Board	Height Rear Opening	Painting	Approximate Weights	
		Length	Width					Net	Crated
115	Frog	58	34	10	5		Black	105	170
171	Frolic	40	34	28	-	26	Blk. Enam.	115	180

*Always use telegraph code when wiring orders to us. It insures accuracy - saves time - saves money.*

**PRICES DELIVERED**

115	\$
171	
Chassis	
Total	\$

**N**O 115 is a well-constructed, inexpensive open body for use on the roadster, adapted to carrying tools, small packages or light articles. It converts the roadster into a combination passenger and delivery car. The body is easily attached in a few minutes. A fast service car for plumbers, carpenters and contractors.

Regular Equipment No. 115, includes drop endgate; flareboard with steel protecting strips.

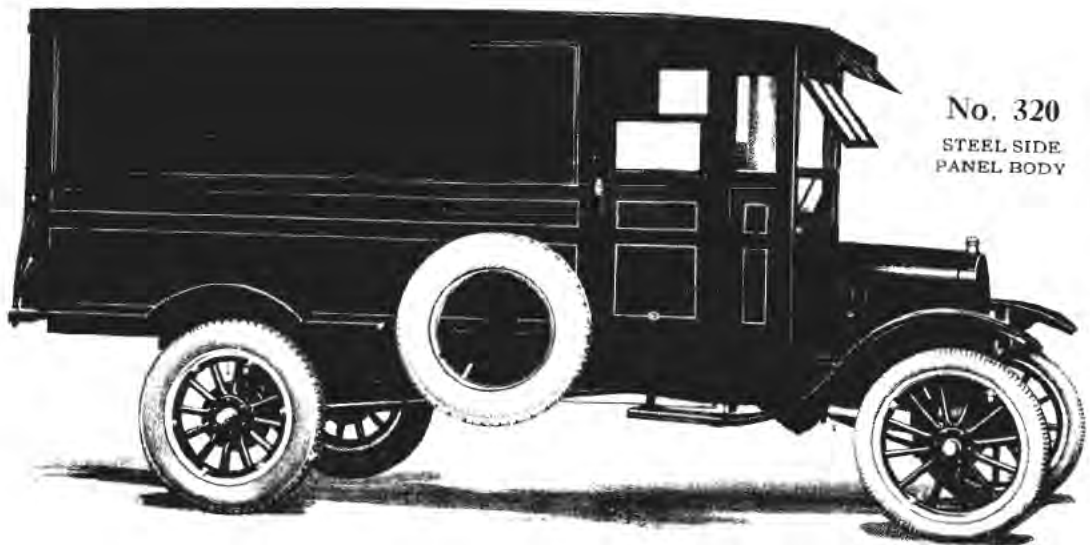
No. 171 steel panel slip-on body for the roadster, is designed especially for the delivery of light merchandise which must be protected from dampness, such as tobacco, cigars and candy. The rear doors have a convenient, sturdy fastening designed to be fastened with a padlock when desired.



**NO. 171**  
**INTERIOR**

Sold with Martin-Parry Service Insurance—See page 2





No. 320  
STEEL SIDE  
PANEL BODY

TYPE C - WITH MARTIN-PARRY ROLLER DOORS

## No. 320 Steel Side Panel Body

On the Ford Ton Truck Chassis

### SPECIFICATIONS

Style No.	Code Word	Inside Back of Seat		Height of Top		Painting	Approximate Weights Including New Equipment	
		Length	Width	Floor to Roof	Rear Opening		Net	Crated
320A	Fry	96	44	54	50	M-P	890	1140
320B	Fumble	96	44	54	50	Pekin Green or	940	1215
320C	Fund	96	44	54	50	M-P Wine	955	1230

Always use telegraph code when wiring orders to us. It insures accuracy - saves time - saves money.

#### PRICES DELIVERED

320A (Open Front)	\$	
320B (Hinged Doors)		
320C (Roller Doors)		
Trays (each) (Pg. 78)		
Partition (Pg. 78)		
Chassis		
Total	\$	

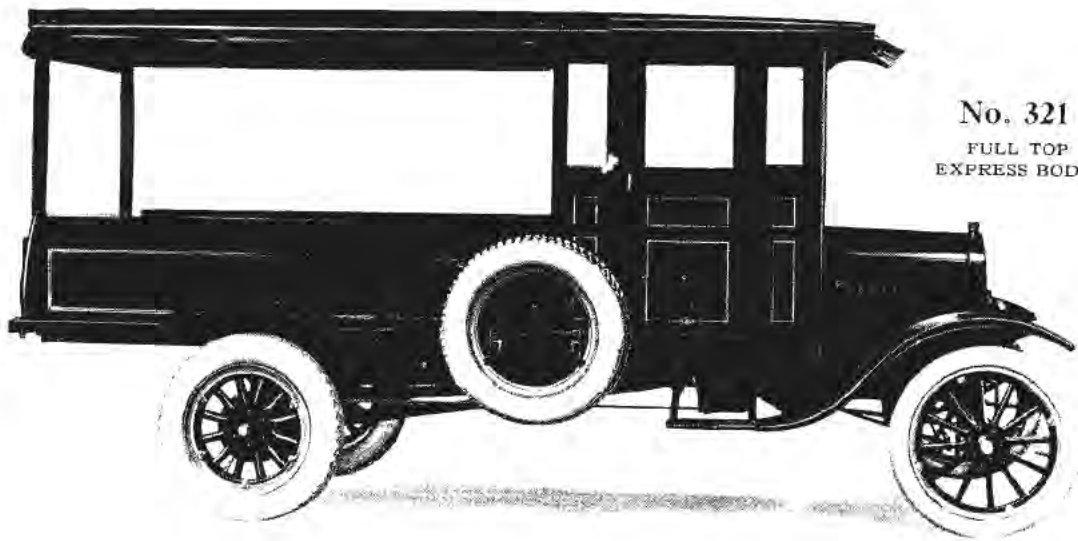
A HANDSOME body of rakish lines and distinctive appearance for the one ton chassis with 96-inch loading space behind the driver's seat. Dust-proof and weather-proof.

Regular equipment includes two tire carriers, one on either side, to provide for rear as well as front spare tires, double ventilating windshield, sun visor, double steel doors in rear, two-section spring cushions, lazyback, toe boards, combination running boards and fenders, lamp and license bracket, bolts for attaching body to chassis.



TYPE A  
OPEN FRONT

Sold with Martin-Parry Service Insurance—See page 2



No. 321  
FULL TOP  
EXPRESS BODY

TYPE C—WITH MARTIN-PARRY ROLLER DOORS

## No. 321 Full Top Express Body

On the Ford Ton Truck Chassis

### SPECIFICATIONS

Style No.	Code Word	Inside Back of Seat		Panel	Height of Top		Painting	Approximate Weights <i>Including New Equipment</i>	
		Length	Width		Floor to Roof	Rear Opening		Net	Crated
321A	Funnel	96	44	14	54	50	M-P	675	1025
321B	Furrow	96	44	14	54	50	Pekin	745	1085
321C	Habit	96	44	14	54	50	Green	765	1110

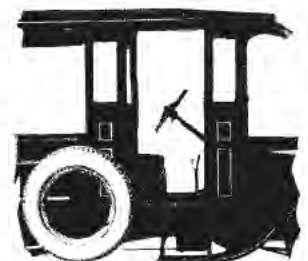
Always use telegraph code when wiring orders to us. It insures accuracy—saves time—saves money.

#### PRICES DELIVERED

321A (Open Front) .....	\$
321B (Hinged Doors) .....	
321C (Roller Doors) .....	
Screen Sides (Pg. 76) .....	
Screen Front (Pg. 76) .....	
Chassis .....	
Total .....	\$

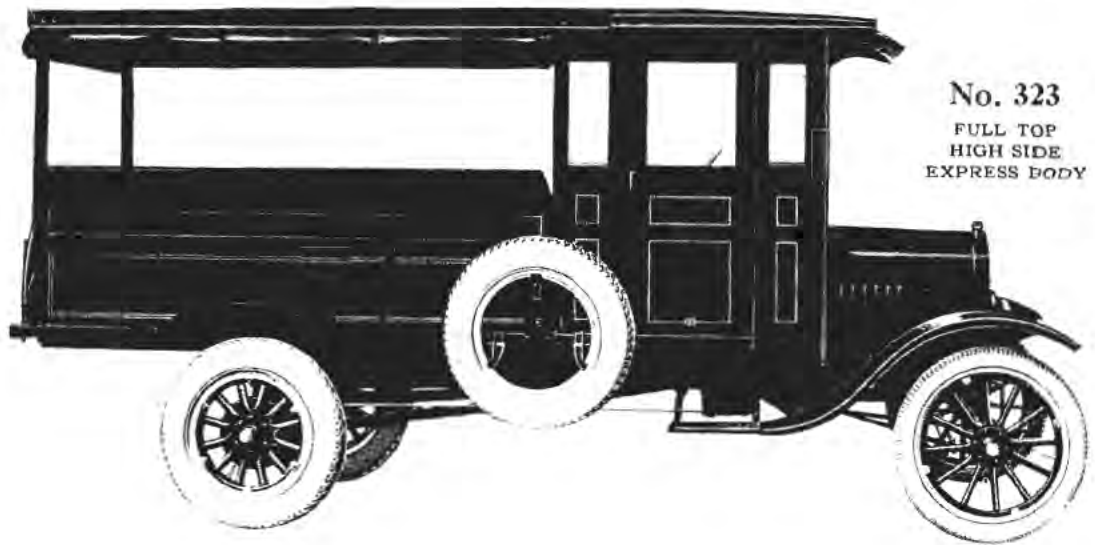
**A**N ideal ton-truck body for all general hauling. Full top with drop curtains around rear compartment gives ample protection to the load.

Regular equipment includes two tire carriers, one on either side, to provide for rear as well as front spare tires, double ventilating windshield, sun visor, drop endgate with chains, two-section spring cushions, lazyback, toe boards, combination running boards and fenders, lamp and license bracket, bolts for attaching body to chassis.



TYPE A  
OPEN FRONT

Sold with Martin-Parry Service Insurance—See page 2



**No. 323**  
**FULL TOP**  
**HIGH SIDE**  
**EXPRESS BODY**

TYPE C - WITH MARTIN-PARRY ROLLER DOORS

## No. 323 Full Top, High Side Express Body

*On the Ford Ton Truck Chassis*

### SPECIFICATIONS

Style No.	Code Word	Inside Back of Seat		Panel	Height of Top		Painting	Approximate Weights <i>Including New Equipment</i>	
		Length	Width		Floor to Roof	Rear Opening		Net	Crated
323A	Halo	96	44	20	54	50	M-P	715	1090
323B	Halter	96	44	20	54	50	Pekin	780	1160
323C	Ham	96	44	20	54	50	Green	805	1180

*Always use telegraph code when wiring orders to us. It insures accuracy—saves time—saves money.*

#### PRICES DELIVERED

323A (Open Front)	\$
323B (Hinged Doors)	
323C (Roller Doors)	
Screen Sides (Pg. 76)	
Screen Front (Pg. 76)	
Chassis	
<b>Total</b>	<b>\$</b>

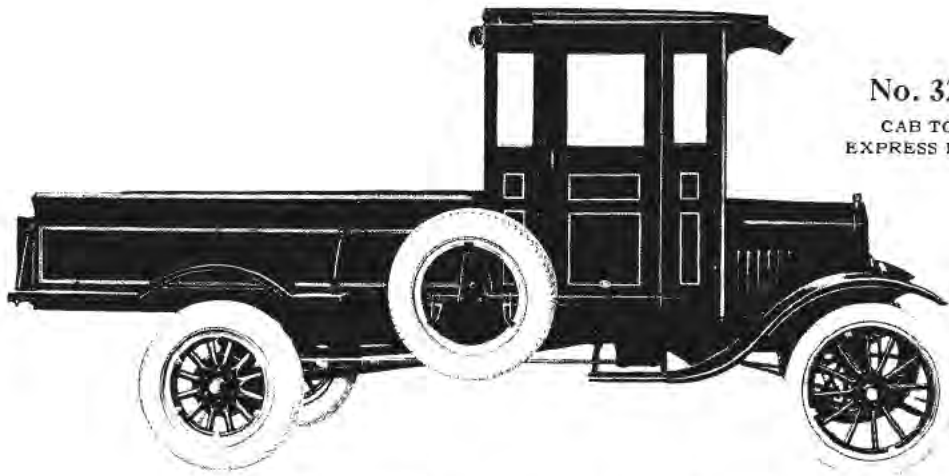
**S**IMILAR to No. 321 but with 20 inch side panels for high loading of bulky merchandise.

Regular equipment includes two tire carriers, one on either side, to provide for rear as well as front spare tires, double ventilating windshield, sun visor, drop endgate with chains, two-section spring cushions, lazyback, toe boards, combination running boards and fenders, lamp and license bracket, bolts for attaching body to chassis.



TYPE A  
 OPEN FRONT

Sold with Martin-Parry Service Insurance—See page 2



**No. 322**  
CAB TOP  
EXPRESS BODY

TYPE C—WITH MARTIN-PARRY ROLLER DOORS

## No. 322 Cab Top Express Body

*On the Ford Ton Truck Chassis*

### SPECIFICATIONS

Style No.	Code Word	Inside Back of Seat		Panel	Painting	Approximate Weights <i>Including New Equipment</i>	
		Length	Width			Net	Crated
322A	Hamlet	92	44	14	M-P	600	980
322B	Hammer	92	44	14	Pekin	670	1050
322C	Hard	92	44	14	Green	695	1080

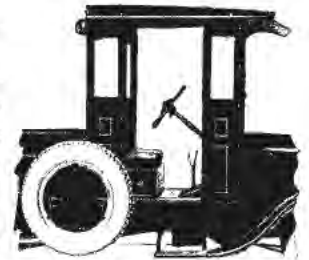
*Always use telegraph code when wiring orders to us. It insures accuracy—saves time—saves money.*

### PRICES DELIVERED

322A (Open Front) .. \$	
322B (Hinged Doors) ..	
322C (Roller Doors) ..	
Chassis ..	
Total .. \$	

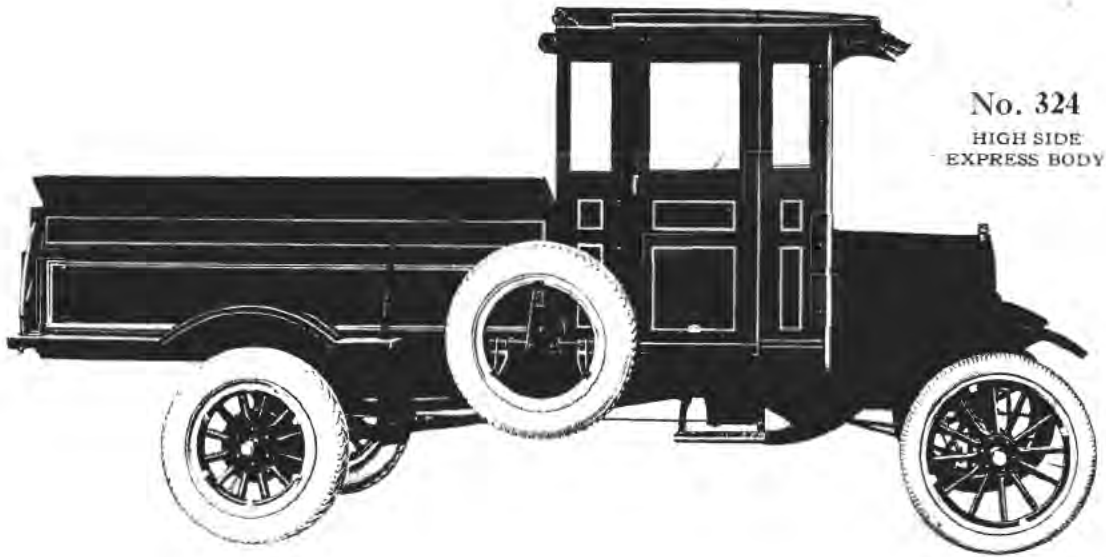
**A** STURDY open express body for service not requiring protection for the load.

Regular equipment includes two tire carriers, one on either side, to provide for rear as well as front spare tires; double ventilating windshield; sun visor; curtain or No. 913 Filler Panel back of driver's seat; drop end-gate with chains; two-section spring cushions; lazyback; toe boards; combination running boards and fenders; lamp and license bracket; bolts for attaching body to chassis.



TYPE A  
OPEN FRONT

Sold with Martin-Parry Service Insurance—See page 2



TYPE C WITH MARTIN PARRY ROLLER DOORS

## No. 324 High Side Cab Top Express Body

On the Ford Ton Truck Chassis

### SPECIFICATIONS

Style No.	Code Word	Inside Back of Seat		Panel	Painting	Approximate Weights Including New Equipment	
		Length	Width			Net	Crated
324A	Handle	92	44	20	M-P	645	1050
324B	Hanger	92	44	20	Pekin	715	1120
324C	Harbor	92	44	20	Green	735	1140

Always use telegraph code when wiring orders to us. It insures accuracy—saves time—saves money.

#### PRICES DELIVERED

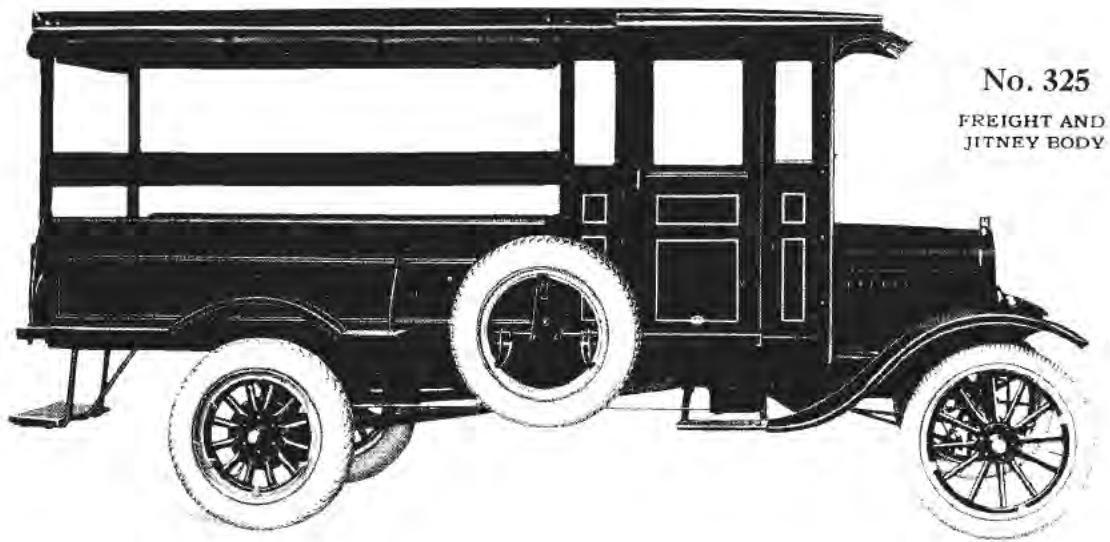
324A	\$
324B	
324C	
Chassis	
Total	\$

**D**EEP body for bulky loads or commodities handled in boxes and crates. Heavy ironing of floor and flareboards insures long wear in hard service.

Regular equipment includes two tire carriers, one on either side, to provide for rear as well as front spare tires; double ventilating windshield; sun visor; curtain or No. 913 Filler Panel back of driver's seat; drop endgate with chains; two-section spring cushions; lazyback; toe boards; combination running boards and fenders; lamp and license bracket; bolts for attaching body to chassis.

TYPE A  
OPEN FRONT

Sold with Martin-Parry Service Insurance—See page 2



No. 325  
FREIGHT AND  
JITNEY BODY

TYPE C—WITH MARTIN-PERRY ROLLER DOORS

## No. 325 Combination Freight and Jitney Body

On the Ford One Ton Truck  
SPECIFICATIONS

Style No.	Code Word	Inside Back of Seat		Panel	Height of Top		Painting	Approximate Weights Including New Equipment	
		Length	Width		Floor to Roof	Rear Opening		Net	Crated
325A	Hawk	96	44	14	56	50	M P	790	1160
325B	Hay	96	44	14	56	50	Pekin	855	1260
325C	Haze	96	44	14	56	50	Green	880	1280

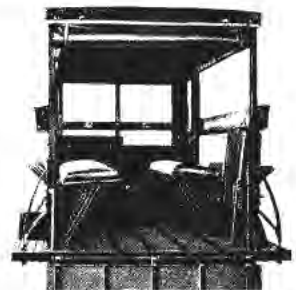
Always use telegraph code when wiring orders to us. It insures accuracy—saves time—saves money.

### PRICES DELIVERED

325A (Open Front) .. \$	
325B (Hinged Doors) ..	
325C (Roller Doors) ..	
Excise Tax ..	
Chassis ..	
Total .. \$	

**C**OMBINATION freight and jitney body with seats and rear step for passenger service. Seats can be folded back under back rests, quickly adapting the body to handle freight or general hauling, as illustrated at the right.

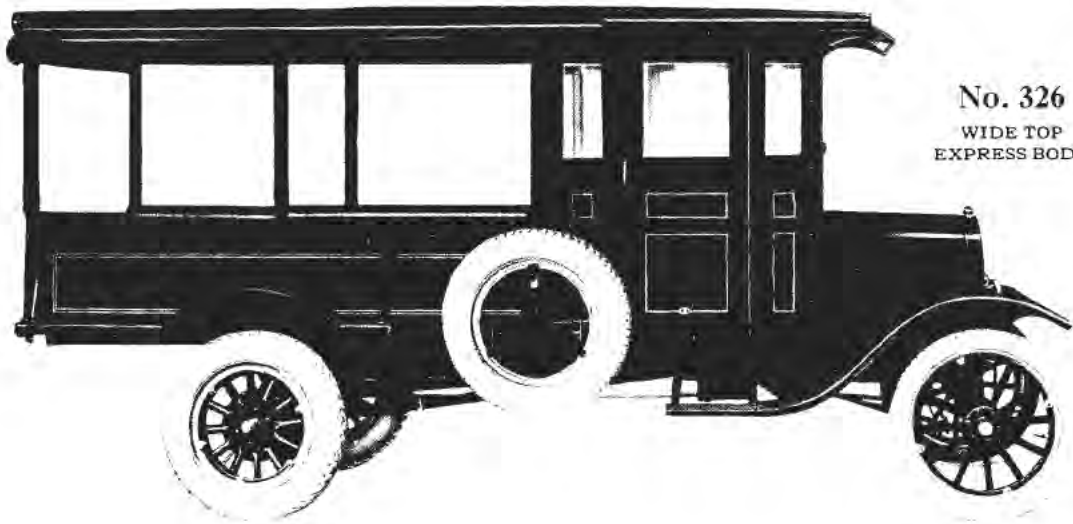
Regular equipment includes seats, rear step and backrest, as illustrated; two tire carriers, one on either side, to provide for rear as well as front spare tires; double ventilating windshield; sun visor; drop endgate with chains; curtains for sides and rear of body; two-section spring cushions; lazyback; toe boards; combination running boards and fenders; lamp and license bracket; bolts for attaching body to chassis.



REAR VIEW

Sold with Martin-Perry Service Insurance—See page 2





**No. 326**  
WIDE TOP  
EXPRESS BODY

TYPE C—WITH MARTIN-PARRY ROLLER DOORS

## No. 326 Wide Top Express Body

On the Ford Ton Truck Chassis

### SPECIFICATIONS

Style No.	Code Word	Inside Back of Seat		Panel	Height of Top		Painting	Approximate Weights <i>Including New Equipment</i>	
		Length	Width		Floor to Roof	Rear Opening		Net	Crated
326A	Hark	96	44	14	56	50	M-P	850	1155
326B	Hasp	96	44	14	56	50	Pekin	915	1215
326C	Haven	96	44	14	56	50	Green	940	1245

*Always use telegraph code when wiring orders to us. It insures accuracy—saves time—saves money.*

### PRICES DELIVERED

326A	\$	
326B		
326C		
Screen Sides (Pg. 75)		
Screen Front (Pg. 76)		
Chassis		
<b>Total</b>	\$	

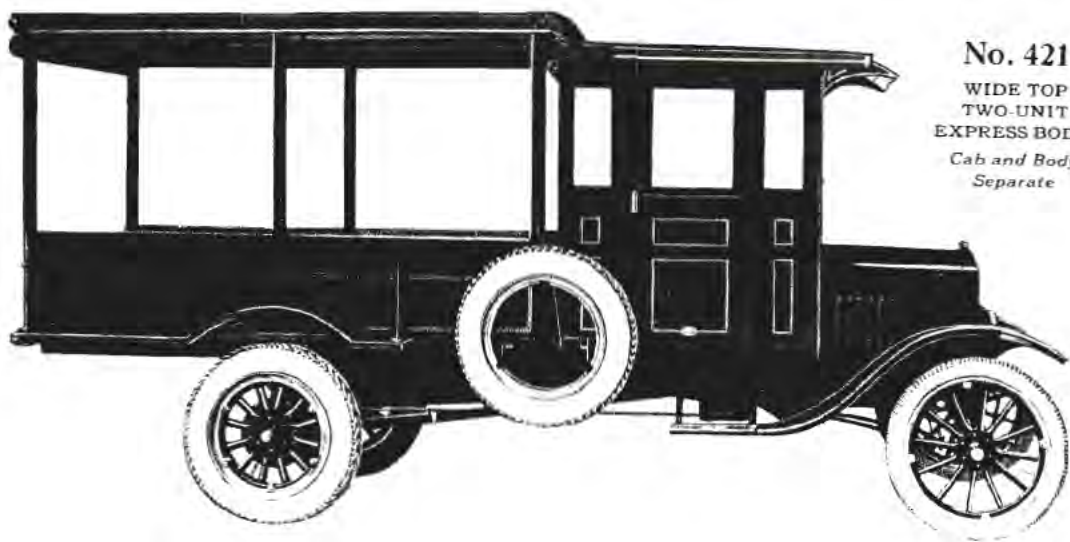
**T**HE wide top of this body is supported by posts that rise from rigid bracings on the outer edge of the flareboards, thus facilitating the handling of bulky merchandise.

Regular equipment includes two tire carriers, one on either side, to provide for rear as well as front spare tires; double ventilating windshield; sun visor; curtains at sides and rear of body; drop endgate with chains; two-section spring cushions; lazyback; toe boards; combination running boards and fenders; lamp and license bracket; bolts for attaching body to chassis.



REAR VIEW

Sold with Martin-Parry Service Insurance—See page 2



**No. 421**  
WIDE TOP  
TWO-UNIT  
EXPRESS BODY  
*Cab and Body  
Separate*

TYPE C WITH NO. 420C VESTIBULE CAB

## No. 421 Wide Top Two-Unit Express Body

*On the Ford One Ton Truck Chassis*

### SPECIFICATIONS

Style No.	Code Word	Cab	Back of Seat		Panel	Height of Top		Painting	Approximate Weights <i>Including New Equipment</i>	
			Length	Width		Floor to Roof	Rear Opening		Net	Crated
421	Javelin	—	96	44	14	60	54	M-P Pekin Green	545	750
421A	Hemp	420A	96	44	14	60	54		835	1145
421B	Hen	420B	96	44	14	60	54		900	1205
421C	Herald	420C	96	44	14	60	54		925	1235

*Always use telegraph code when wiring orders to us. It insures accuracy—saves time—saves money.*

#### PRICES DELIVERED

421	\$
421A	
421B	
421C	
Screen Equipment (Pg. 76)	
Chassis	
Total	\$

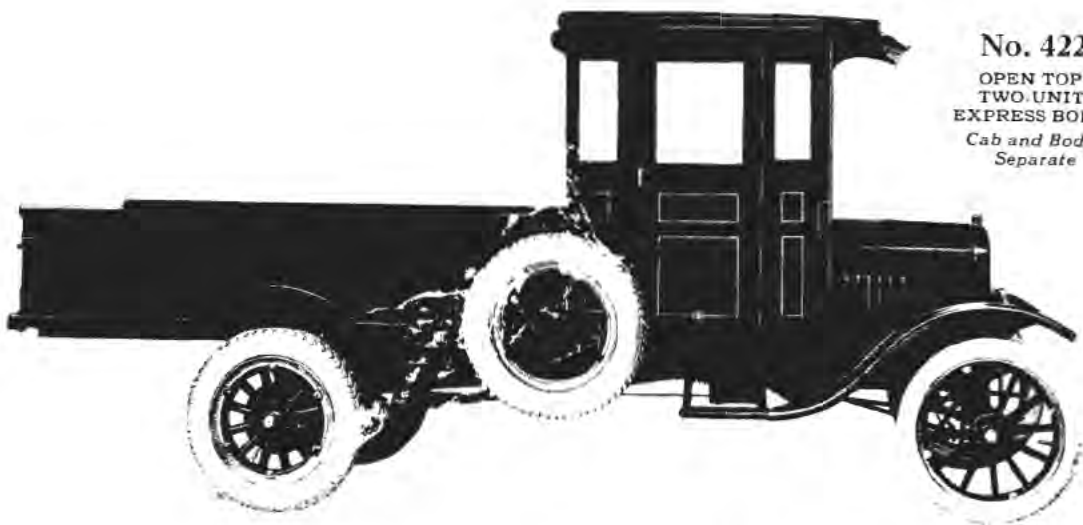
**T**HIS all-purpose body is equipped with an extra wide and high top, supported by posts that are rigidly braced to the outer edge of the flareboards.

Regular equipment includes 420A Open Cab, or 420B or C Vestibule Cabs as quoted; two tire carriers, one on either side to provide for front as well as rear tires; drop endgate with chains; combination running boards and fenders; curtains for sides and rear of body; lamp and license bracket; bolts for attaching body to chassis, etc.



TYPE A  
WITH NO. 420A CAB

Sold with Martin-Parry Service Insurance—See page 2



**No. 422**  
 OPEN TOP  
 TWO-UNIT  
 EXPRESS BODY  
*Cab and Body  
 Separate*

TYPE C—WITH NO. 420C VESTIBULE CAB

## No. 422 Open Top Two-Unit Express Body

*On the Ford Ton Truck Chassis*

### SPECIFICATIONS

Style No.	Code Word	Cab	Back of Seat		Panel	Painting	Approximate Weights <i>Including New Equipment</i>	
			Length	Width			Net	Crated
422	Jeer	—	96	44	14	M-P Pekin Green	415	655
422A	Head	420A	96	44	14		705	1015
422B	Hedge	420B	96	44	14		770	1075
422C	Helm	420C	96	44	14		795	1105

*Always use telegraph code when wiring orders to us. It insures accuracy—saves time—saves money.*

#### PRICES DELIVERED

422	\$
422A	
422B	
422C	
Chassis	
Total	\$

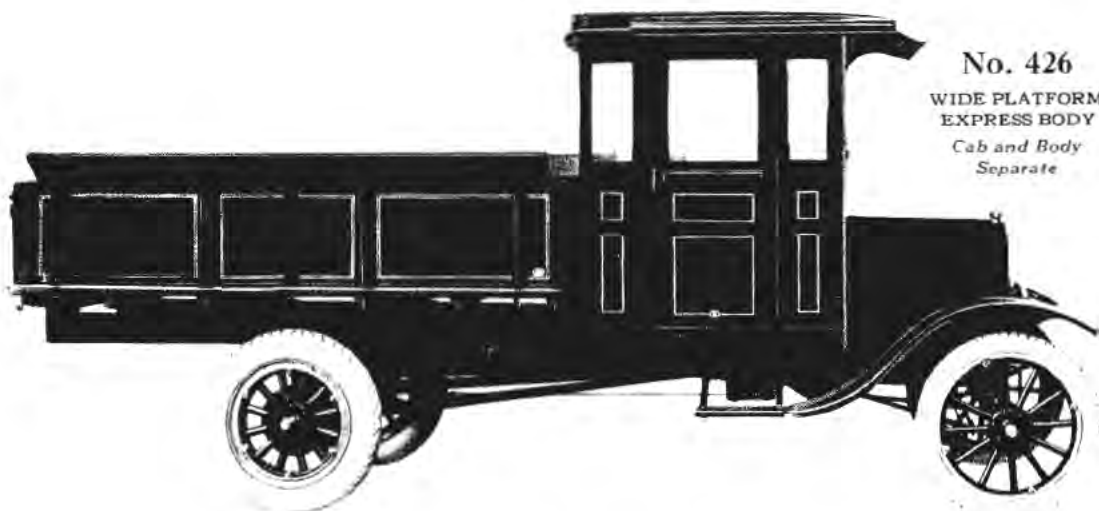
**T**HIS open top express body is built as an independent unit and can be used with any open or vestibule cab, or open seat as listed.

Regular equipment includes 420A Open Cab, or 420B or C Vestibule Cabs as quoted; two tire carriers, one on either side to provide for front as well as rear tires; drop endgate with chains; combination running boards and fenders; lamp and license bracket; bolts for attaching body to chassis, etc.



TYPE A  
 WITH NO. 420A CAB

Sold with Martin-Parry Service Insurance—See page 2



No. 426  
WIDE PLATFORM  
EXPRESS BODY  
*Cab and Body  
Separate*

TYPE C - WITH 420C VESTIBULE CAB

## No. 426 Special Wide Platform Express Body

*On the Ford Ton Truck Chassis*

### SPECIFICATIONS

Style No.	Code Word	Cab	Back of Seat		Panel	Painting	Approximate Weights <i>Including New Equipment</i>	
			Length	Width			Net	Crated
426	Jacket	—	96	60	18	M-P Pekin Green	660	820
426A	Hike	420A	96	60	18		950	1280
426B	Hill	420B	96	60	18		1000	1380
426C	Hinge	420C	96	60	18		1050	1415

*Always use telegraph code when wiring orders to us. It insures accuracy—saves time—saves money.*

PRICES DELIVERED	
426	\$
426A	
426B	
426C	
Chassis	
Total	\$

**S**PPECIAL wide express body. Flareboards fit down tight on top of the panels and have four heavy braces on each side. Equipped with special running boards. A high-grade body for packers, butchers and other similar trades.

Regular equipment includes 420A Open Cab, or 420B or C Vestibule Cab, as quoted; high drop endgate with long chain; running boards; bolts for attaching body to chassis; lamp and license brackets.



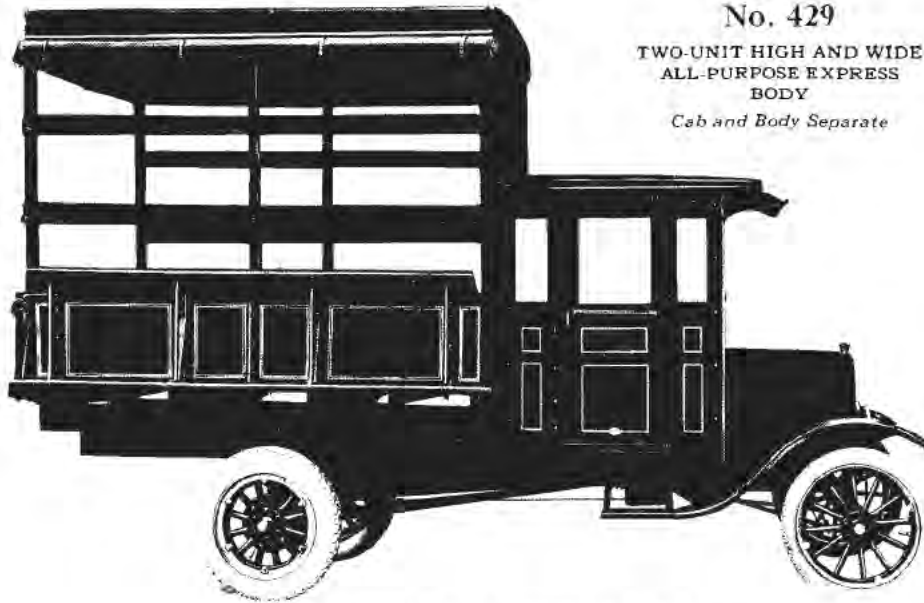
TYPE A  
WITH NO. 420A CAB

Sold with Martin-Parry Service Insurance—See page 2

No. 429

TWO-UNIT HIGH AND WIDE  
ALL-PURPOSE EXPRESS  
BODY

*Cab and Body Separate*



TYPE C—WITH NO. 420C VESTIBULE CAB

## No. 429 High and Wide All-Purpose Express Body

*On the Ford One Ton Truck Chassis*

### SPECIFICATIONS

Style No.	Code Word	Cab	Back of Seat		Panel	Height of Top		Painting	Approximate Weights <i>Including New Equipment</i>	
			Length	Width		Floor to Roof	Rear Opening		Net	Crated
429	Jelly	—	96	60	18	74	70	M-P Pekin Green	830	1120
429A	Herder	420A	96	60	18	74	70		1120	1580
429B	Hero	420B	96	60	18	74	70		1170	1680
429C	Hermit	420C	96	60	18	74	70		1220	1715

*Always use telegraph code when wiring orders to us. It insures accuracy—saves time—saves money.*

#### PRICES DELIVERED

429	\$	
429A		
429B		
429C		
Chassis		
Total	\$	

**A**N unusually high and wide body especially designed with a solid front, as shown at right, for furniture, express, and general hauling of bulky merchandise. Slats are provided at the sides, and three rope cleats at each side of the rear. The endgate may be secured at any partially or full open position.

Regular equipment includes 420A OpenCab or 420B or C Vestibule Cab, as quoted; also high endgate with long chain; combination running boards and fenders; curtains for sides and rear of body; lamp and license bracket; and bolts for attaching to chassis.

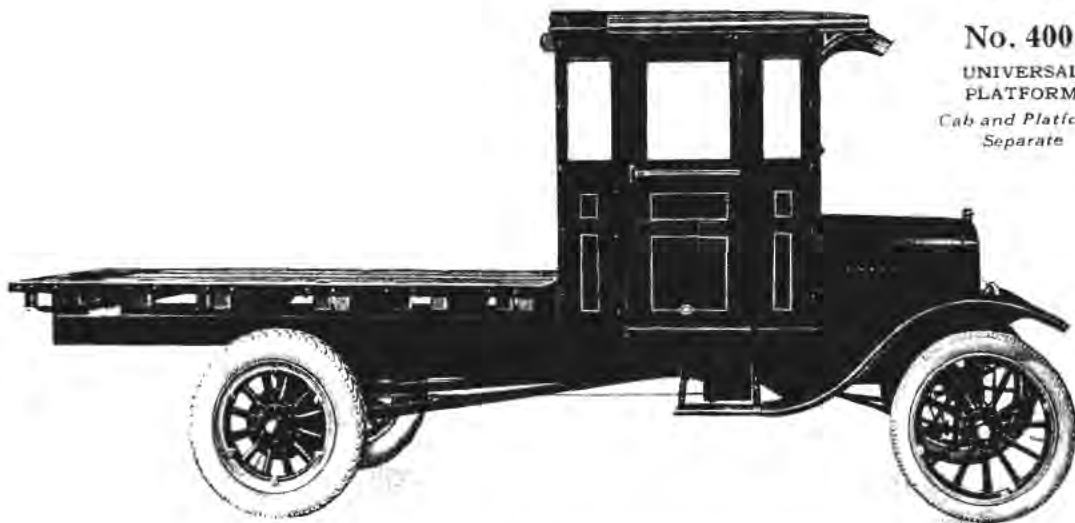


No. 429 REAR VIEW

Sold with Martin-Parry Service Insurance—See page 2



**No. 400**  
**UNIVERSAL**  
**PLATFORM**  
*Cab and Platform*  
*Separate*



TYPE C—WITH NO. 420C VESTIBULE CAB

**No. 400 Universal Platform**

*On the Ford One Ton Chassis*

**SPECIFICATIONS**

Style No.	Code Word	Cab	Inside Dimensions		Painting (Platform)	Approximate Weights <i>Including New Equipment</i>	
			Length	Width		Net	Crated
400	Jag	—	96	72	Black	450	450
400A	Henna	420A	96	72		750	915
400B	Header	420B	96	72		815	1010
400C	Heron	420C	96	72		840	1035

*Always use telegraph code when wiring orders to us. It insures accuracy—saves time—saves money.*

**PRICES DELIVERED**

400	\$
400A	
400B	
400C	
Chassis	
Total	\$

**T**HE floor is 8-inch selected lumber supported by five sloats or cross members. Corrugated steel skid straps and heavy plates at rear and front ends protect the platform against wear and tear. Tapered steel pockets are provided, let in flush with the edge of the platform, into which grain panels, stake sections, or cattle racks can be set so that they cannot shake loose but may be easily removed (see pages 50-55 inc.). The edges of the platform are bound with steel and the rear ends of the sills are protected by heavy steel plates.

Regular equipment includes 420A Open Cab, or 420B or C Vestibule Cabs, as quoted; lamp and license bracket; bolts for attaching to chassis.



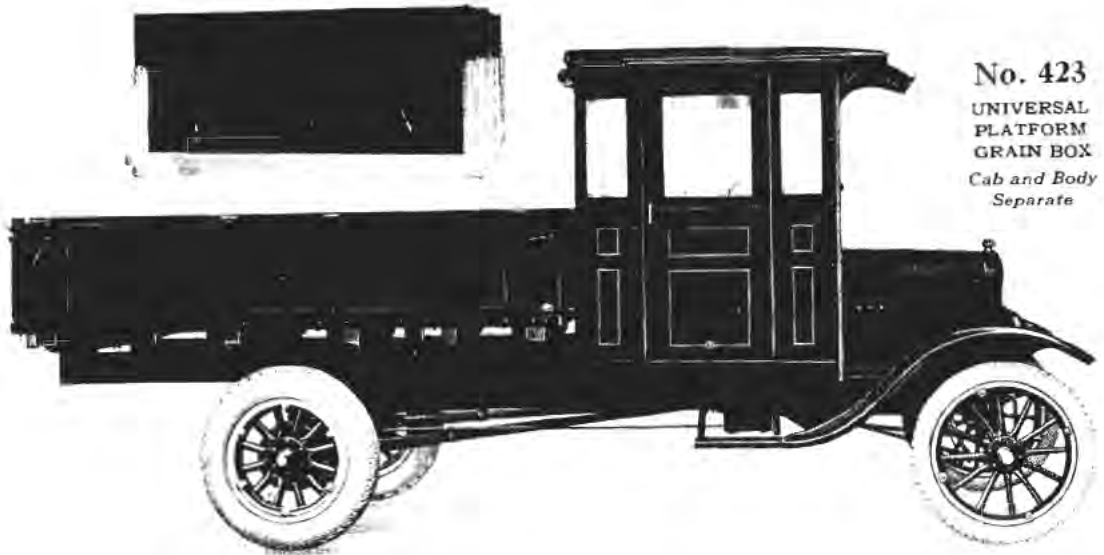
TYPE A  
 WITH 420A CAB

Sold with Martin-Parry Service Insurance—See page 2



No. 42 Grain Equipment (Extra).  
10" Tip-Top Panels Front, Sides,  
and Rear, and Special Grain End-  
gate

50



**No. 423**  
UNIVERSAL  
PLATFORM  
GRAIN BOX  
*Cab and Body  
Separate*

TYPE C WITH NO. 420C VESTIBULE CAB

## No. 423 Universal Platform Express Body

*On the Ford One Ton Chassis*

### SPECIFICATIONS

Style No.	Code Word	Cab	Inside Dimensions		Panels	Painting	Approximate Weights <i>Including New Equipment</i>	
			Length	Width			Net	Crated
423	Jail	—	91	66	18	Martin-Parry	540	660
423A	Hip	420A	91	66	18	Parry	830	1120
423B	Hitch	420B	91	66	18	Pekin	880	1220
423C	Hive	420C	91	66	18	Green	930	1260

*Always use telegraph code when wiring orders to us. It insures accuracy—saves time—saves money.*

51

### PRICES DELIVERED

423	\$
423A	
423B	
423C	
42 Grain Eqpt	
Chassis	
Total	\$

**A** GRAIN-TIGHT express body, consisting of the No. 400 Universal Platform with 18-inch side and front panels held down by tiebolts, and drop endgate with chains. Forms an excellent grain body when fitted with the No. 42 Grain Equipment (illustrated above) at small extra cost.

Regular equipment includes 420 A Open Cab, or 420B or C Vestibule Cabs, as quoted; side panels as shown; drop endgate with chains; lamp and license bracket; bolts for attaching to chassis.

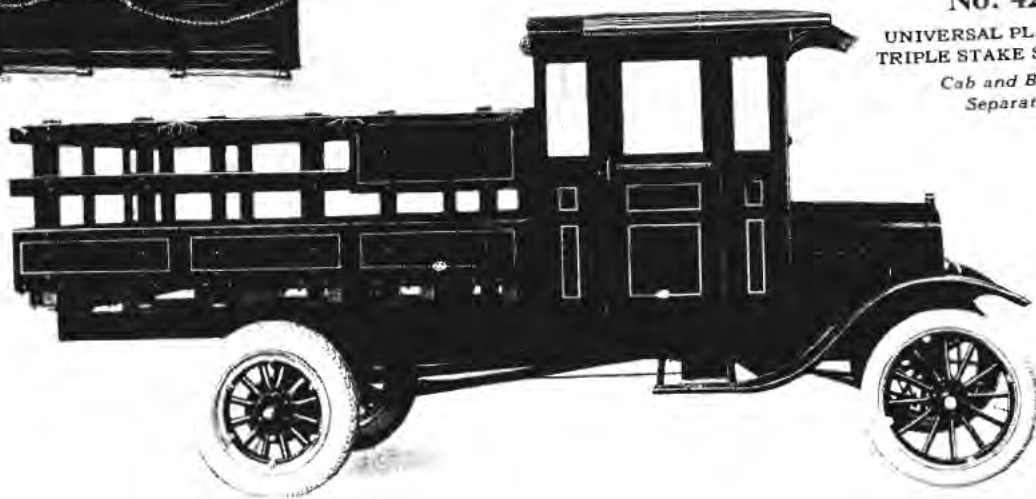


TYPE A  
WITH 420A CAB

Sold with Martin-Parry Service Insurance—See page 2



52



**No. 424**  
**UNIVERSAL PLATFORM**  
**TRIPLE STAKE SECTIONS**  
*Cab and Body*  
*Separate*

**TYPE C—WITH 420C VESTIBULE CAB**

## No. 424 Universal Platform Stake Body

*On the Ford Ton Truck Chassis*  
**SPECIFICATIONS**

Style No.	Code Word	Cab	Inside Dimensions		Height of Stakes	Painting	Approximate Weights <i>Including New Equipment</i>	
			Length	Width			Net	Crated
424	Jamb	—	92	68	30		665	905
424A	Hobby	420A	92	68	30	M-P	955	1365
424B	Hole	420B	92	68	30	Pekin	1005	1465
424C	Holly	420C	92	68	30	Green	1050	1500

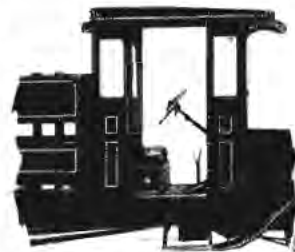
*Always use telegraph code when wiring orders to us. It insures accuracy—saves time—saves money.*

### PRICES DELIVERED

424	\$
424A	
424B	
424C	
948 Endgate	
Chassis	
<b>Total</b>	<b>\$</b>

**A**N all-purpose body consisting of the No. 400 Universal Platform with stake sections on sides, front and rear, which may be easily removed when desired, but cannot shake loose. A solid endgate (illustrated above) may be supplied in place of the rear stake section, if desired, at a small extra cost.

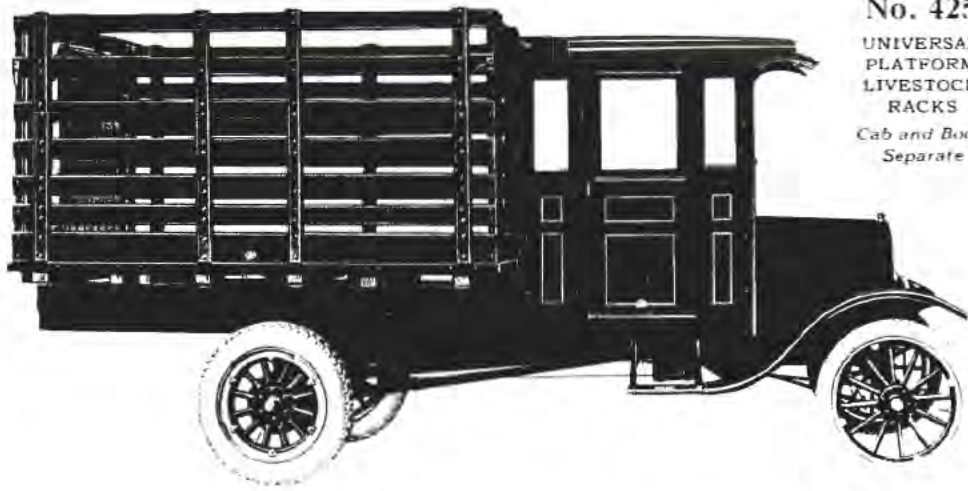
Regular equipment includes 420A Open Cab or 420B or C Vestibule Cabs, as quoted; stake sections at sides, front and rear, with signboard as illustrated; lamp and license bracket; bolts for attaching to chassis.



**TYPE A**  
**WITH 420A CAB**

Sold with Martin-Parry Service Insurance—See page 2

53



**No. 425**  
**UNIVERSAL**  
**PLATFORM**  
**LIVESTOCK**  
**RACKS**  
*Cab and Body*  
*Separate*

TYPE C WITH 420C VESTIBULE CAB

**No. 425 Universal Platform Stock Body**

*On the Ford Ton Truck Chassis*

**SPECIFICATIONS**

Style No.	Code Word	Cab	Inside Dimensions		Height of Stakes	Painting	Approximate Weights <i>Including New Equipment</i>	
			Length	Width			Net	Crated
425	Jangle	—	90	66	48	Martin-	900	1200
425A	Home	420A	90	66	48	Parry	1190	1660
425B	Honey	420B	90	66	48	Pekin	1240	1760
425C	Hook	420C	90	66	48	Green	1288	1795

*Always use telegraph code when wiring orders to us. It insures accuracy—saves time—saves money.*

**PRICES DELIVERED**

425	\$	
425A		
425B		
425C		
Chassis		
Total	\$	

**A** STOCK body, consisting of the No. 400 Universal Platform with livestock racks at sides and front and a hinged rear door for stock to enter. Racks may be easily removed when desired, but cannot shake loose.

Regular equipment includes 420A Open Cab, or 420B or C Vestibule Cabs, as quoted; stock racks, with hinged door at rear; lamp and license bracket; bolts for attaching to chassis.



**TYPE A**  
**WITH 420A CAB**

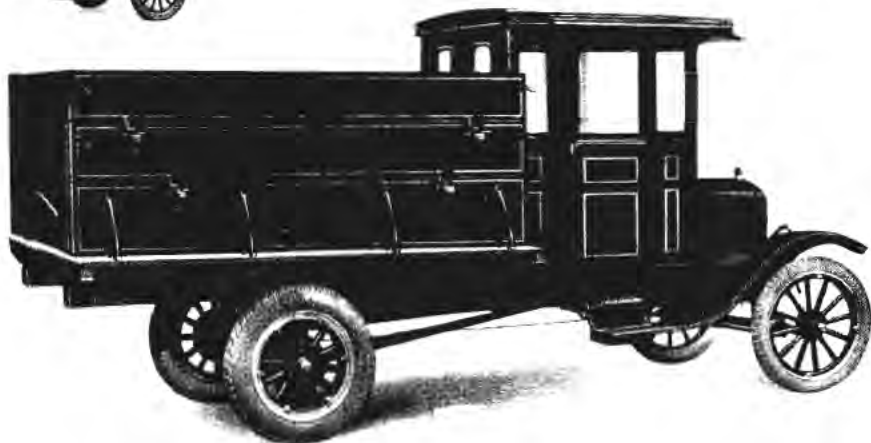
Sold with Martin-Parry Service Insurance—See page 2



No. 5021 Removable Stock Racks (extra) rest on bottom panel, and fit with No. 5022 Stock Sliding Endgate (extra)

## No. 427

GRAIN-STOCK EXPRESS BODY



TYPE C WITH 420C VESTIBULE CAB

Shows 10" Tip Top Panels (Extra) above the 14" and 12" Panels regularly supplied.

## No. 427 Grain-Stock Express Body

On the Ford Ton Truck Chassis

### SPECIFICATIONS

Style No.	Code Word	Inside Back of Seat		Panel Height Without Tip-Top	Capacity Struck Bushels	Painting	Approximate Weights Including New Equipment	
		Length	Width				Net	Crated
427	Jargon	93	61	26	Without Tip Top	M-P Pekin Green	500	565
427A	Hop	93	61	26	68 bu.		790	1025
427B	Horn	93	61	26	With Tip Top		840	1125
427C	Horse	93	61	26	95 bu.		890	1155

Always use telegraph code when wiring orders to us. It insures accuracy—saves time—saves money.

### PRICES DELIVERED

427	\$
427A	
427B	
427C	
5020 10-inch Tip-Top Panels	
5021 Stock Racks	
5022 Stock Endgate	
Chassis	
Total	\$

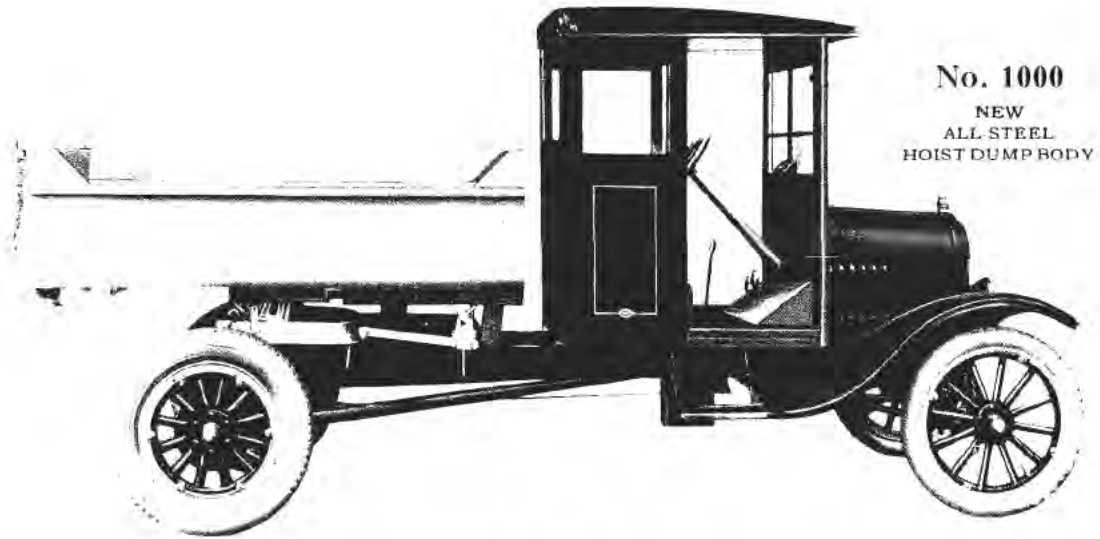
**A**N ideal all-purpose farm body with grain-tight base, and grain-tight side panels in two sections, the lower one 14 inches and the upper one 12 inches high. The No. 5020 10 inch Tip-Top panels (extra), held down by tie-rods, increase capacity.

For stock hauling, second and Tip-Top panels may be raised to allow 5-inch ventilating spaces. No. 5022 Stock Sliding Endgate (extra) completes the rear. See also No. 5021 removable Stock Racks (extra) on page 56.

Regular equipment includes 420A Open Cab or 420B or C Vestibule Cabs, as quoted; also 14 and 12-inch side panels with hinged grain endgate; tie-down rods; etc.



No. 5022 STOCK SLIDING ENDGATE (EXTRA)



WITH 411 "SERV ALL" CAB

## No. 1000 New All-Steel Dump Body — Hoist Operated

*On the Ford Ton Truck Chassis*

### SPECIFICATIONS

Style No. Body Only	Code Word	Inside Dimensions		Height of Sides	Capacity	Painting	Approximate Weights	
		Length	Width				Net	Crated
1000	Dagger	72	50	15	31 cu. ft.	Battleship Gray	410	760

*Always use telegraph code when wiring orders to us. It insures accuracy saves time saves money.*

### PRICES DELIVERED

1000 Body	\$
420A Cab	
420B Cab	
420C Cab	
431 "Serv All" Cab	
430 Seat / 5007 Dash	
Chassis	
Total	\$

**A**LOW and unusually wide hoist body with new hinged bearing, permitting a mounting only  $3\frac{1}{2}$  inches back of center of load, which insures a complete ( $45^\circ$ ) dump in 2 seconds, with only  $3\frac{1}{2}$  turns of the crank and much less effort than required in any other hand hoist body ever produced. New hoist automatically locks body in any position when operator takes his hand off lever. Round corners insure strength and clean dumping.

Supplied with any of the cabs or open seat illustrated on pages 70-73 inclusive.

Additional equipment shown on pages 62-63.

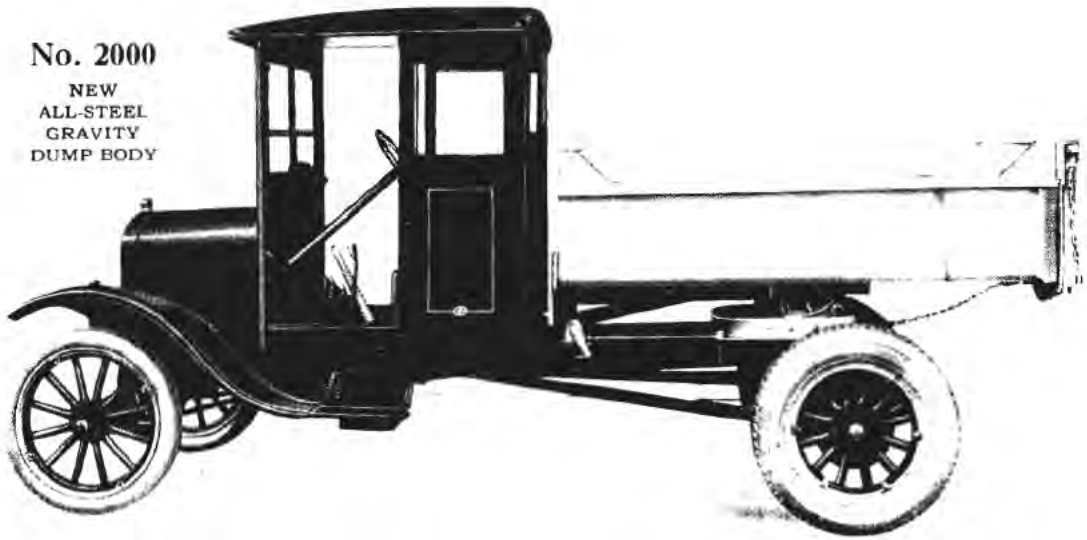


HOIST MECHANISM

Sold with Martin-Parry Service Insurance—See page 2

# No. 2000

NEW  
ALL-STEEL  
GRAVITY  
DUMP BODY



WITH 431 "SERV-ALL" CAB

## No. 2000 New All-Steel Gravity Dump Body

On the Ford Ton Truck Chassis

### SPECIFICATIONS

Style No. (Body Only)	Code Word	Inside Dimensions		Height of Sides	Capacity	Painting	Approximate Weights <i>Including New Equipment</i>	
		Length	Width				Net	Crated
2000	Daisy	72	50	15	31 cu. ft.	Battleship Gray	600	775

Always use telegraph code when wiring orders to us. It insures accuracy—saves time—saves money.

### PRICES DELIVERED

2000 Body	\$	
420A Cab		
420B Cab		
420C Cab		
431 "Serv-All" Cab		
430 Seat / 5007 Dash		
Chassis		
Total	\$	

**A**LOW and unusually wide *full automatic* body—released *and returned* by lever inside the cab while truck is in motion or still. Automatically locked in road position without reliance on pins or springs. Will remain in full dumping position or return instantly at driver's option. Jackknife arm contains efficient shock absorber. Round corners insure strength and clean dumping.

Supplied with any of the cabs or open seat illustrated on pages 70-73 inclusive.

Additional equipment shown on pages 62-63.



### GRAVITY MECHANISM

Shock absorber in Jackknife arm absorbs excessive strains on chassis

Sold with Martin-Parry Service Insurance—See page 2



Additional Equipment for



Rear view, with tail gate down, showing one body partition No. 3005—which permits carrying two separate loads.

No. 3005. Code Word: *Delta*



View of coal chute endgate—No. 3003—for dumping coal in basket or basement.

No. 3003. Code Word: *Defile*

View of body hoisted, with apron plates No. 3006 adjusted for easy shoveling of coal.

No. 3006. Code Word: *Demand*



View showing endgate No. 3004 with side apron plates, adjusted for spreading fine stone.

No. 3004. Code Word: *Delay*



View showing same endgate with adjustment for spreading coarse stone and other material.

Steel Dump Bodies 1000 and 2000



No. 3000—Six-inch straight sides. Increase capacity 12½ cubic feet.

Code Word: *Decoy*



No. 3001—Six-inch flared sides. Shown in illustration at the right. Increase capacity 25 cubic feet.

Code Word: *Decree*



No. 3002—Twelve-inch flared sides. Increase capacity 35 cubic feet.

Code Word: *Deer*



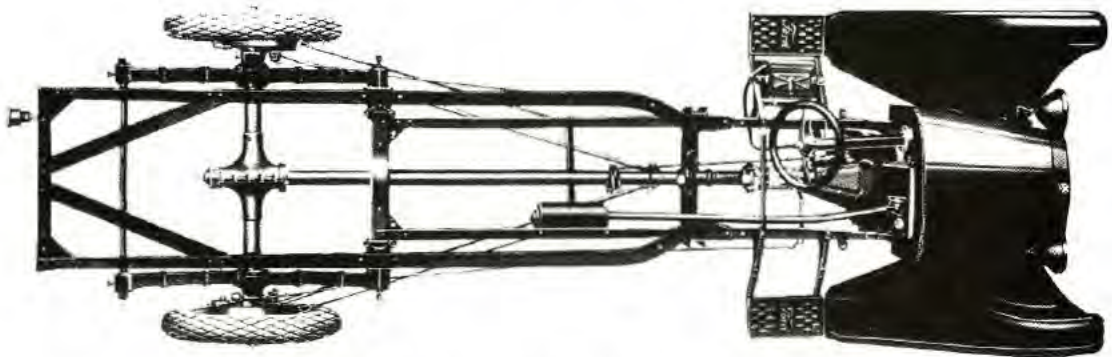
View showing the wide body without rivets or bolts to prevent clean dumping. View also shows the No. 3002 twelve-inch flared side boards in position

Materials—Weight and Body Capacity

Material	Avg. wt. in lbs. per cu. ft.	Avg. wt. in lbs. per cu. yd.	Cu. ft. in Body	
			1 Ton	1½ Ton
Brick.....	125	3375	16	24
Cement.....	100	2700	20	30
Coal, hard...	55	1485	37	55
Coal, soft...	50	1430	40	60
Coke.....	37	860	62	93
Earth, dry...	80	2160	25	37
Stone, crshd.	100	2700	25	30
Sand.....	105	2835	21	31
Gravel.....	120	2970	17	25



THE SLIP JOINT ASSEMBLY



NO. 4000 EXTENSION (146" WHEELBASE) ON THE FORD TON TRUCK

## No. 4000 Extension (146" Wheelbase)

On the Ford One Ton Truck

### SPECIFICATIONS

Number	Code Word	Wheel-base	Length		Width Extension Frame	Springs		Number of Leaves	Approximate Net Weight (Lbs.)		Martin-Parry Cabs Available	Martin-Parry Bodies Available
			Front Dash	From Rear of Driver's Seat		Length	Width		Truck and Extension Complete	Extension Only With Spring		
4000	Eagle	146"	157"	111"	33"	46"	2 1/4"	12	1918	418	420A 420B 420C 431 430	450 453 454

Always use telegraph code when wiring orders to us. It insures accuracy—saves time—saves money.

#### PRICES DELIVERED

No. 4000 \$

Excise Tax

Chassis

Total \$

**T**RANSFORMS the sturdy, economical, and dependable Ford one ton chassis of 123-inch wheelbase into a 146-inch wheelbase truck of 3000 lbs. safe load capacity, for which 128" x 72" platforms and grain-tight express or stake side bodies are immediately available (see pages 66-69 inclusive).

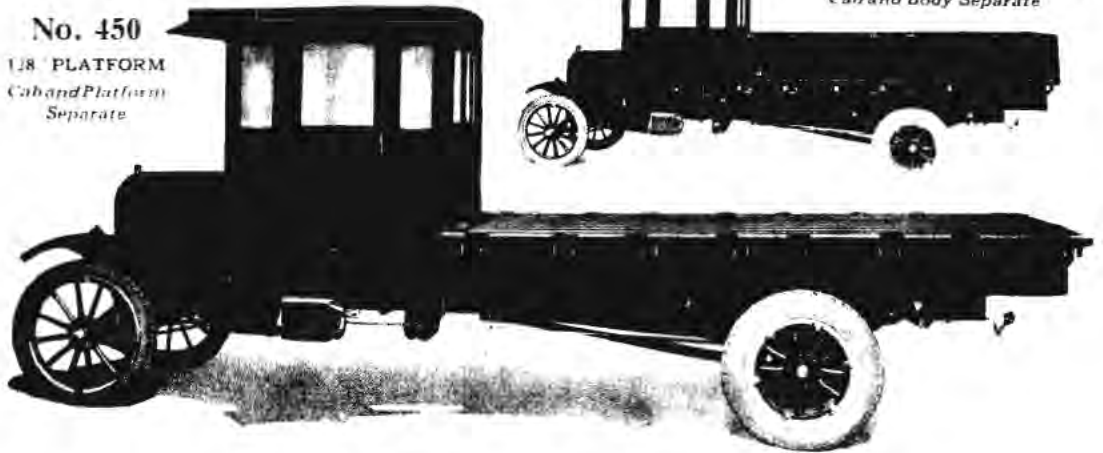
Semi-elliptic springs give the riding qualities of a pleasure car. Saves the extra initial cost and upkeep expense of an unnecessarily heavy truck. Hotchkiss drive (through springs) and slip joint avoid all strain on engine supports.

Designed for use with any conventional auxiliary transmission or two-speed rear axle. Specify transmission or rear axle (if any) to be installed so that proper length slip joint can be supplied.

Regular equipment includes extension frame, semi-elliptic springs, slip joint, lamp and license bracket, and bolts for attaching to chassis.

Sold with Martin-Parry Service Insurance—See page 2

**No. 450**  
128" PLATFORM  
Cab and Platform  
Separate



SHOWN WITH 120" VESTIBULE CAB

## No. 450 — 128" Platform    No. 453 — 12800 Platform Express Body

On the Ford One Ton Chassis

### SPECIFICATIONS

Style No. (Body Only)	Code Word	Inside Dimensions		Panels	Painting	Approximate Weights <i>Including New Equipment</i>	
		Length	Width			Net	Crated
450	Jabber	128	72	—	Black	565	565
453	Jacket	123	66	18	Pekin Green	835	940

*Always use telegraph code when wiring orders to us. It insures accuracy — saves time — saves money.*

### PRICES DELIVERED

450	\$
453	
420A Cab	
420B Cab	
420C Cab	
431 "Serv-All" Cab	
430 Seat / 5007 Dash	
Chassis	
Total	\$

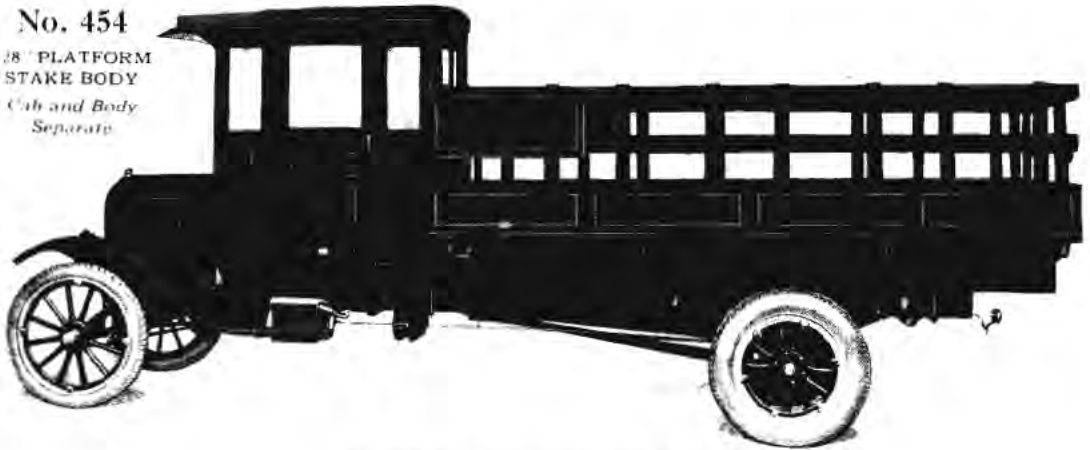
**T**HE new No. 450 Platform is built to stand the unusually hard service to which this type of job is subjected. Heavy, seasoned lumber is used throughout, and is thoroughly protected by corrugated steel skid straps and heavy endplates at front and rear. The edges of the platform are bound with steel and the rear ends of the sills are capped with heavy steel plates. Tapered pocket pockets are provided, let in flush with the edge of the platform, into which express panels or stake sections can be set.

The No. 453 Express Body consists of the No. 450 Platform, with 18-inch side and front panel, held down by tiebolts, and drop endgate with chains.

Nos. 450 and 453 can be supplied with any of the cabs or open seat illustrated on pages 70-73 inclusive.

Sold with Martin-Parry Service Insurance—See page 2.

**No. 454**  
**128" PLATFORM**  
**STAKE BODY**  
*Cab and Body*  
*Separate*



SHOWN WITH 420C VESTIBULE CAB

## No. 454 — 128" Platform Stake Body

*On the Ford Ton Truck Chassis*

### SPECIFICATIONS

Style No. (Body Only)	Code Word	Inside Dimensions		Height of Stakes	Painting	Approximate Weights <i>Including New Equipment</i>	
		Length	Width			Net	Crated
454	Jade	123	68	30	Martin-Parry Pekin Green	775	885

*Always use telegraph code when wiring orders to us. It insures accuracy - saves time - saves money.*

### PRICES DELIVERED

454	\$	
420A		
420B		
420C		
431 "Serv-All" Cab		
430 Seat /		
5007 Dash /		
Chassis		
Total	\$	

**A** POPULAR body for use with the Martin-Parry No. 4000 Extension on the Ford Ton Truck Chassis for hauling bulky loads where maximum space is required. Consists of the No. 450 Platform (see pages 66-67) with stake sections at sides, front and rear, and signboard as illustrated above. Side stakes are in four sections, which may be removed individually if desired, but cannot shake loose.

An ideal unit for general hauling in cities and on farms. Inside loading space (58.3 sq. ft.) is 34" greater than the Martin-Parry No. 424 Stake Body for the ton truck.

Can be supplied with any of the cabs or open seat illustrated on pages 70-73, inclusive.

Sold with Martin-Parry Service Insurance—See page 2





**No. 420A**

OPEN CAB  
WITHOUT VESTIBULE DOORS



**No. 420C**

VESTIBULE CAB  
WITH M-P ROLLER DOORS

**No. 420A Open Cab  
Without Doors**

**No. 420B Vestibule Cab  
With Hinged Doors**

**No. 420C Vestibule Cab  
With M-P Roller Doors**

*For Use on Ford Chassis*

**SPECIFICATIONS**

Style No.	Code Word	Size of each Cushion		Painting	Approximate Weights <i>Including Your Equipment</i>	
		Width	Depth		Net	Crated
420A	Hub	21	16	Martin- Parry Pekin	300	465
420B	Hulk	21	16		365	560
420C	Human	21	16	Green	390	585

*Always use telegraph code when wiring orders to us. It insures accuracy—saves time—saves money.*

**PRICES DELIVERED**

420A (Open Front) \$	
420B (Hinged Doors) .....	
420C (Roller Doors) .....	
5009 Roller Storm Curtains .....	
Excise Tax .....	
<b>Total</b> .....	<b>\$</b> .....

**A** DE LUXE cab, refined and improved in every detail. New vestibule front permits easy entrance to the driver's seat from the left side and also affords considerable protection in the "A" type, or when doors are open. Driver's roller storm curtains may be installed on "A" types where vestibule doors are not desired. Both hinged and roller doors equipped with the Martin-Parry drop sash and glass.

Regular equipment includes double-ventilating windshield; sun visor; solid cab back partition with sliding sashes or roll-up curtain (optional); two-section spring cushions; spring lazyback; toe boards.



**NO. 5009 ROLLER STORM  
CURTAINS ON 420A CAB**

Sold with Martin-Parry Service Insurance—See page 2



No. 431  
"SERV-ALL" CAB

### No. 431 "Serv-all Cab

### No. 430 Open Seat

For Use on Ford Chassis

### No. 5007 Dash

#### SPECIFICATIONS

Style No.	Code Word	Size of Cushion		Painting	Approximate Weights <i>Including New Equipment</i>	
		Width	Depth		Net	Crated
431	Hurdle	42"	16	Martin-Parry	215	380
430	Hush	42"	16	Pekin Green	70	125
5007	Hustle	—	—	Black	15	25

*Always use telegraph code when wiring orders to us. It insures accuracy—saves time—saves money.*

#### PRICES DELIVERED

No. 431 Cab .....	\$ .....
No. 957 Filler Panel (Pg. 77) .....	\$ .....
No. 5002 Storm Crtns. ....	\$ .....
No. 430 Seat .....	\$ .....
No. 5007 Dash .....	\$ .....
Excise Tax .....	\$ .....
Total .....	\$ .....

**T**HE No. 431 "Serv-All" is a remarkably low priced open cab designed for hard service where complete protection against the weather is not essential, such as on farm and contractors' trucks.

No. 5002 Roll-up Storm Curtains may be added at a slight extra cost.

Regular equipment includes windshield; full-width cushion; roll-up curtains at seat, side and in rear; and toe boards.

The No. 430 Open Seat can be used with all Martin-Parry Two-Unit Bodies or All-Steel Dump Bodies where cabs are not desired. The No. 5007 Dash is used where a windshield is not desired.



NO. 430 SEAT WITH  
NO. 5007 DASH

Sold with Martin-Parry Service Insurance—See page 2





**No. 686**  
DOUBLE VENTILATING WINDSHIELD

**No. 686 Double Ventilating Windshield**  
SPECIFICATIONS

Style No.	Code Word	Size of Glass		Painting	Approximate Weights	
		Width	Depth		Net	Crated (Single)
686, Windshield	Hunk	19	Upper—14 Lower—6	Black	40	100
17, Fenders	Item	—	—	Black Enamel	—	—

*Always use telegraph code when wiring orders to us. It insures accuracy—saves time—saves money.*

**No. 17 Fenders**

**PRICES DELIVERED**

No. 686	\$
No. 17	
Excise Tax	
Total	\$

**T**HE new design of the No. 686 Double Ventilating Windshield gives the driver considerably greater vision. The top section opens inward or outward and the bottom section opens inward, assuring a thorough distribution of cool air. Owing to its rabbeted construction, this windshield is thoroughly water tight. Two efficient fasteners prevent all rattling when closed.

Regularly supplied on all type "A", "B" or "C" bodies and cabs except Nos. 228, 229 and 230 bodies and 431 cab for which special windshields are supplied.



**No. 17 FENDERS**

Extra equipment on all bodies for Model "T" Chassis. Supplied with all necessary irons and bolts for attaching to chassis.

## Martin-Parry

### Screen Equipment for Full Top Express Bodies



**M**ARTIN-PARRY heavy gauge wire screens may be supplied for all Full Top Express Bodies, as shown in the following list:

	Code Word
No. 915 Screen Sides and Rear only for No. 221	<i>Idol</i>
No. 916 " " " " " " " " 223	<i>Impact</i>
No. 917 " " " " " " " " 321	<i>Income</i>
No. 918 " " " " " " " " 323	<i>Index</i>
No. 5005 " " " " " " " " 326	<i>Indian</i>
No. 924 Screen Front only for Nos. 221, 223, 321, 323 and 326	<i>Indigo</i>
No. 5006 Screen Sides Rear and Front for No. 421	<i>Infant</i>

### No. 687 Hinged Lazyback

**P**ROVIDES comfort for a second man combined with easy access to body from front seat. Can be furnished for all panel and full top express bodies.

No. 687

Code Word: *Iron*

**NOTE** that straight lazyback, as shown on driver's side, is standard equipment on all panel and full top express bodies.

Both lazybacks are spring cushioned and stoutly built.



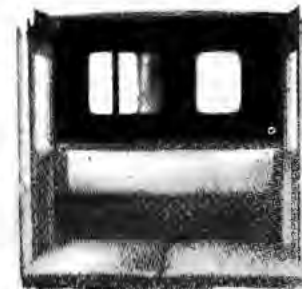
## Martin-Parry

### Vestibule Equipment for Full Top Express Bodies



NO. 957 SOLID BACK

Gives protection to both driver and load. Furnished with upholstered back rest, as illustrated. *Optional* equipment without extra charge in place of lazyback on "B" and "C" types of all Full Top Express Bodies. *Extra* equipment on "A" types of same. An additional charge is made for roll-up curtain or filler panel at top. No. 957 Code Word: *Issue*.



NO. 913 FILLER PANEL

A metal filler for the opening in the back of the No. 420 or 431 cabs or the No. 957 Solid Back affording greater comfort in cold weather. Sliding sashes (as illustrated) may be opened for ventilation.

*Optional* equipment without extra charge, in place of roll-up curtain on all "A", "B" or "C" type cab top express bodies, and on No. 420A, B or C Cabs. *Extra* equipment with 957 Solid Back on all Full Top Express Bodies and on No. 431 Cab. No. 913 Code Word: *Ink*.

## Additional Equipment for Steel Side Panel Bodies Nos. 120, 220 and 320



No. 71 Rear—Tail Gate and Curtains for Bodies 220 and 320. No. 72 Rear—same for Body 120. Optional, in place of rear doors.



No. 73 Rear—Tail Gate, Curtain and Hinged Screen for Bodies 220 and 320. No. 74 Rear—same for Body 120. Furnished at extra cost in place of rear doors.



No. 908 Sliding Door Partition combines protection for the driver with ease of access to rear of body from seat. May be padlocked to guard against theft.



No. 991 One-Section Parcel Rack for Body 120.  
No. 909 for Body 220.  
No. 910 Two-Section Parcel Rack for Body 320.  
Double or triple loading capacity. Easily removable when desired.

## Martin-Parry Bodies Built for Every Purpose

Body styles in most common use among American businesses of all kinds for commercial car or light truck services are shown in the list below.

The commercial car salesman will find frequent reference to this list, together with a study of his customer's requirements, will immediately center attention on the body his customer will buy.

LINE OF BUSINESS	SUITABLE BODY MODELS
Bakers	120, 220, 320
Bottlers	326, 426, 453 with 4000
Confectioners	120, 171, 220, 320
Contractors	1000, 2000, 453 and 454 with 4000
Cleaners and Dyers	120, 220, 320
Clothing Stores	120, 220, 320
Clubs and Hotels	225, 228, 229, 230, 325
Country Homes	228, 229, 230
Department Stores	120, 220, 320, 321, 429
Drugs (Wholesale and Retail)	120, 171, 220, 320
Electrical Supply Stores	221, 222, 321, 323
Farmers	423, 424, 425, 427
Florists and Fruit Growers	120, 220, 320
Government Postal Service	221, 321, 323, 421 (with screens)
Grocery Stores (Wholesale and Retail)	120, 220, 221, 320, 321
Hardware Stores	221, 222, 321, 322, 424
Laundries	120, 220, 320, 424, 454 with 4000
Packing Companies	171, 221, 321, 426
Paint and Oil Dealers	221, 222, 321, 322
Painters and Paper Hangers	170, 221, 321
Plumbing and Heating Supplies	170, 223, 224
Printers and Stationers	120, 220, 221, 320, 321, 323
Produce Dealers	221, 222, 321, 323, 424, 454 (with 4000)
Salesmen	171
Summer Resorts	228, 229, 230
Transfer Companies	221, 322, 423, 424, 426, 454 with 4000
Etc.	

FACTORIES: YORK, PA.: INDIANAPOLIS, IND.: LUMBERTON, MISS.

**ASSEMBLING PLANTS**

- Albany
- Atlanta
- Baltimore
- Boston
- Buffalo
- Chicago
- Cincinnati, O.
- Cleveland
- Dallas
- Detroit
- Flint
- Hartford
- Houston
- Indianapolis
- Jacksonville, Fla.
- Kansas City
- Los Angeles
- Memphis, Tenn.
- Milwaukee
- Minneapolis
- New Orleans
- Oakland, Cal.
- Philadelphia
- Pittsburgh
- Portland, Ore.
- St. Louis
- San Francisco
- Seattle
- Spokane
- Toledo
- York, Penna.



**DISTRIBUTORS**

- Akron, O.  
Akron-Selle Co.
- Columbus, O.  
Universal Body Co.
- Denver, Colo.  
Timpke Bros.
- Pittston, Pa.  
Martin Parry Body Sales Co.
- Richmond, Va.  
Benj. T. Crump Co.
- Springfield, Mass.  
Smith Carriage Co.
- Washington, D.C.  
S. J. Meck's Son
- Worcester, Mass.  
Worcester Commercial Body Co.

- Greater New York
- Bronx, New York City
- Long Island City, N.Y.
- Kearny (Newark), N.J.

