

JANUARY

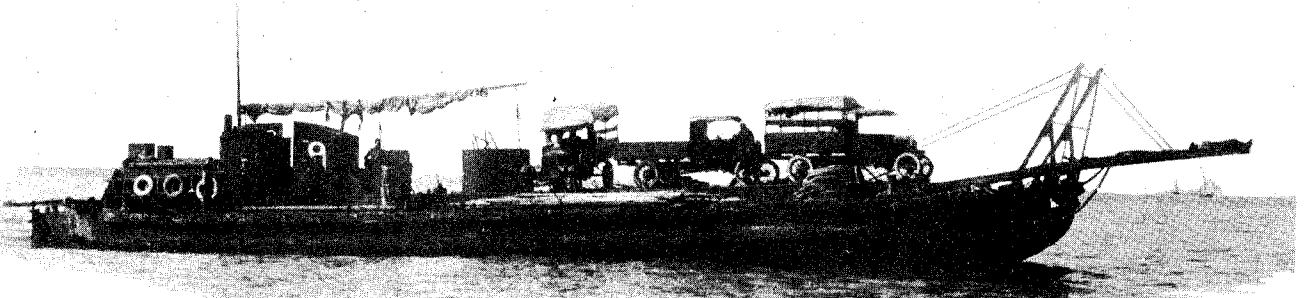
1926

# Ford

## PICTORIAL

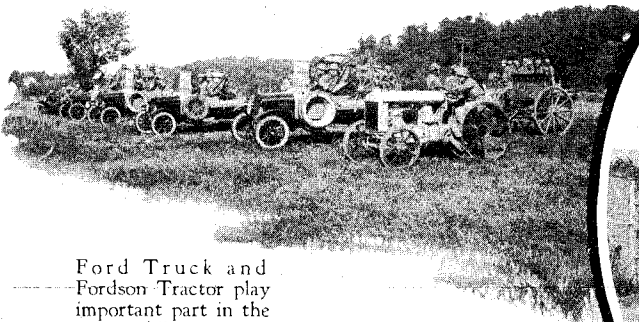


From a verandah at Biloxi, Miss.,  
overlooking the Gulf of Mexico.

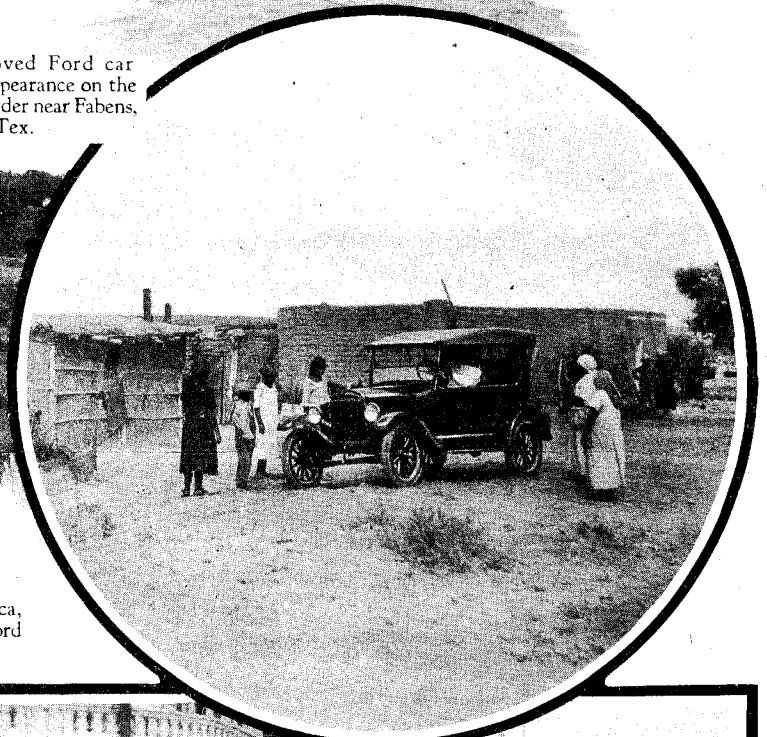


Here's the Spanish Navy Barge K-9 transporting three Ford trucks, the first landed on the Cebadilla beach near Albucemas when the Spanish Army and Navy attacked the Rifian's tribesmen stronghold.

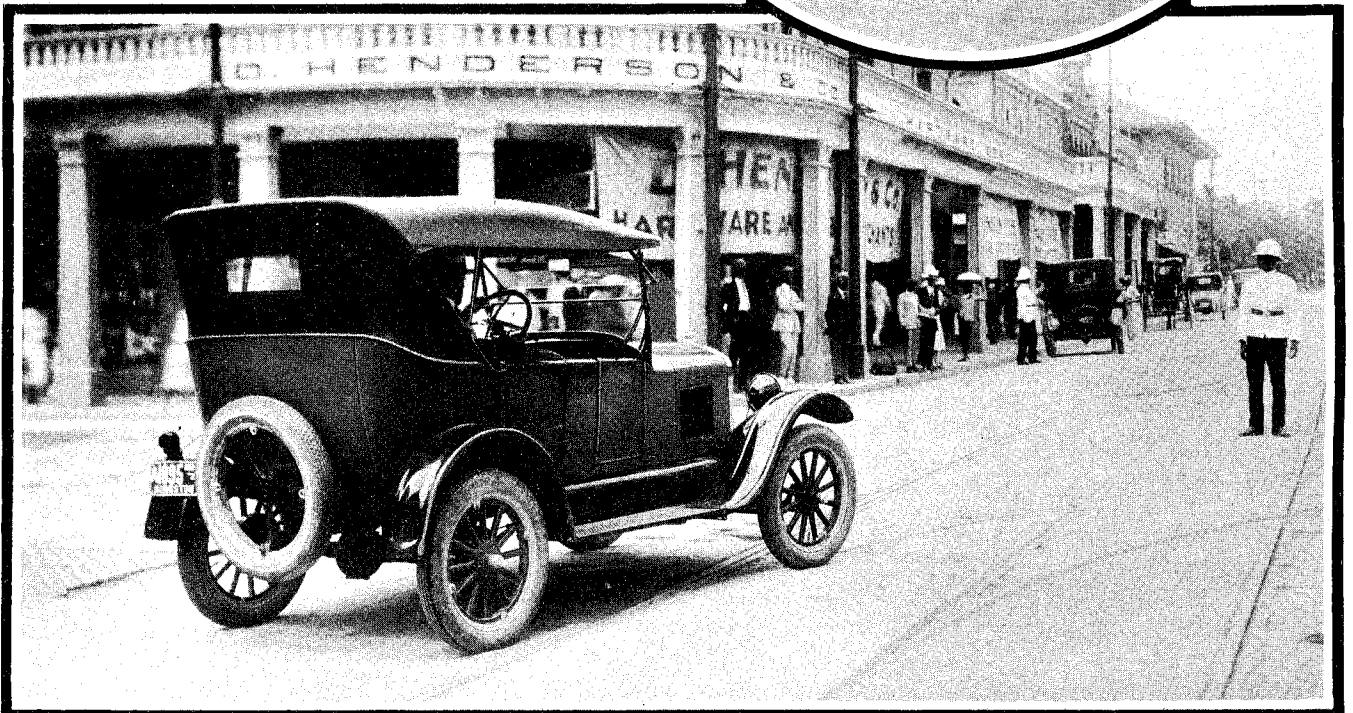
The Improved Ford car makes its appearance on the Mexican border near Fabens, Tex.



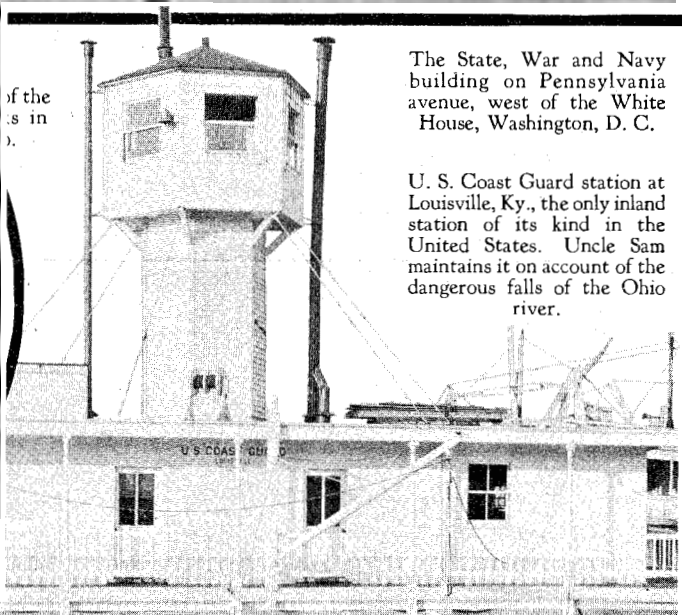
Ford Truck and Fordson Tractor play important part in the army's fall maneuvers in Sweden.



Traffic cops in Kingston, Jamaica, clear way for the Improved Ford Touring Car.

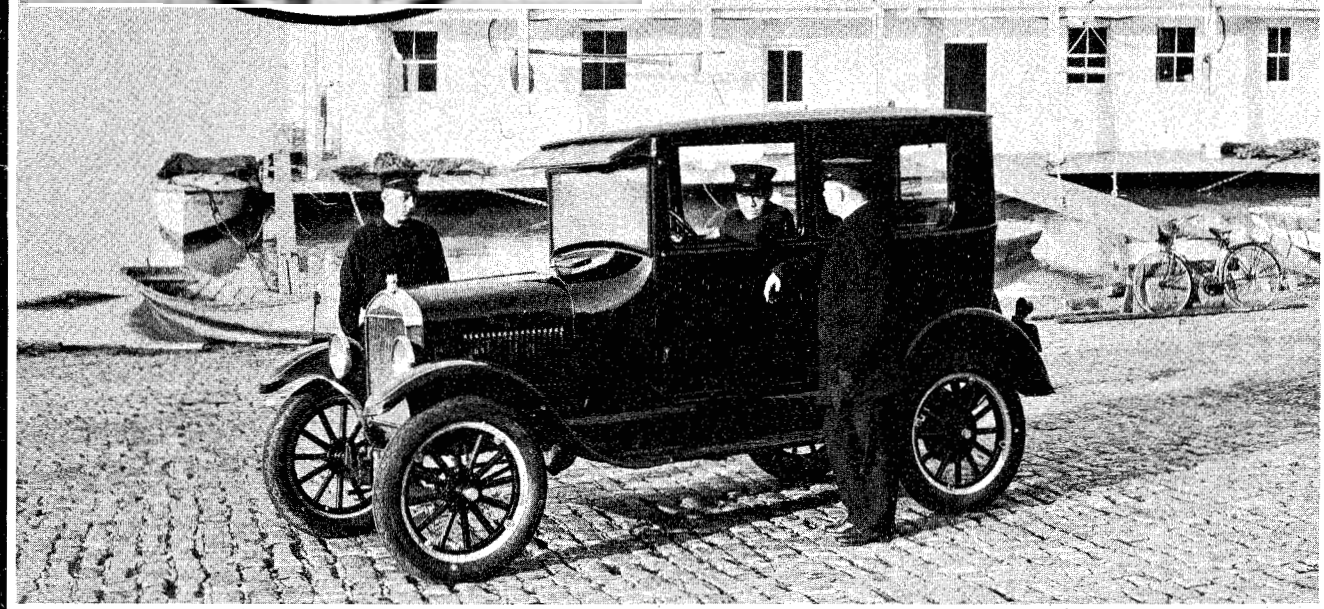


# Ford PICTORIAL



The State, War and Navy building on Pennsylvania avenue, west of the White House, Washington, D. C.

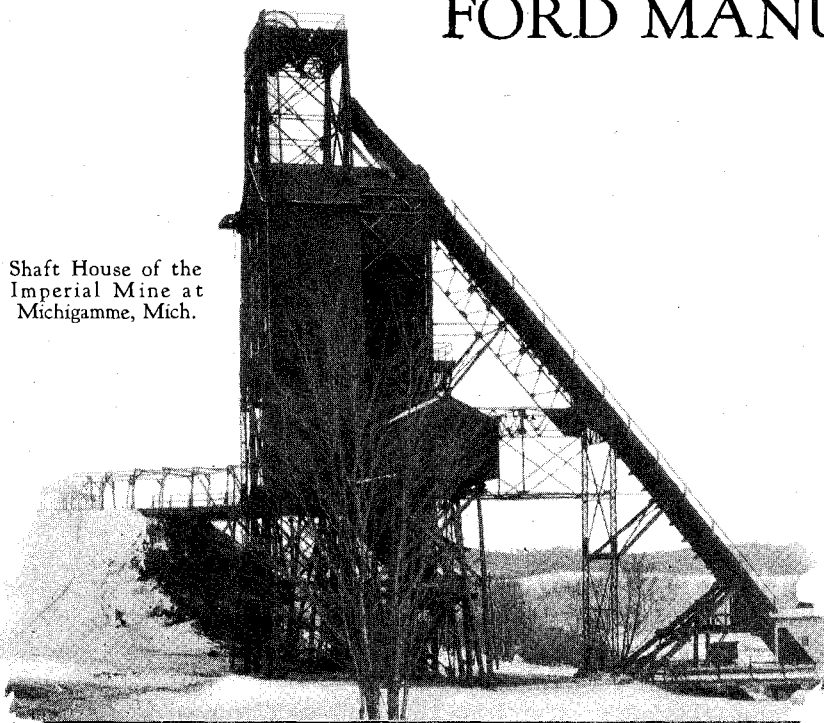
U. S. Coast Guard station at Louisville, Ky., the only inland station of its kind in the United States. Uncle Sam maintains it on account of the dangerous falls of the Ohio river.





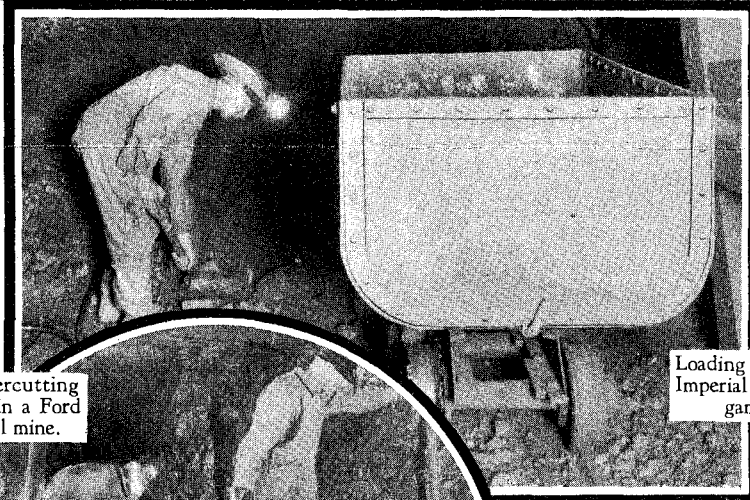
# FORD MANUFACTURE STARTS

Shaft House of the Imperial Mine at Michigamme, Mich.

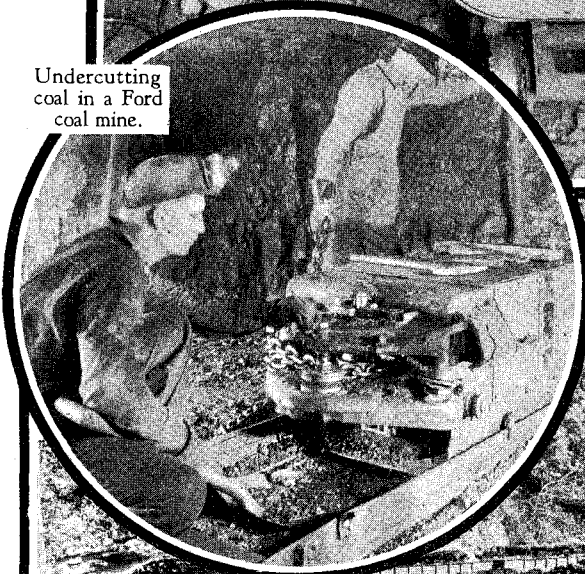


Years ago the Ford Motor Company anticipated the present day production of cars and trucks. When the record output of the Company was only 200,000 completed units in a year, it was foreseen that the bulk of the transportation needs of the world would devolve upon motor vehicles and that before long the demand would be ten times that figure.

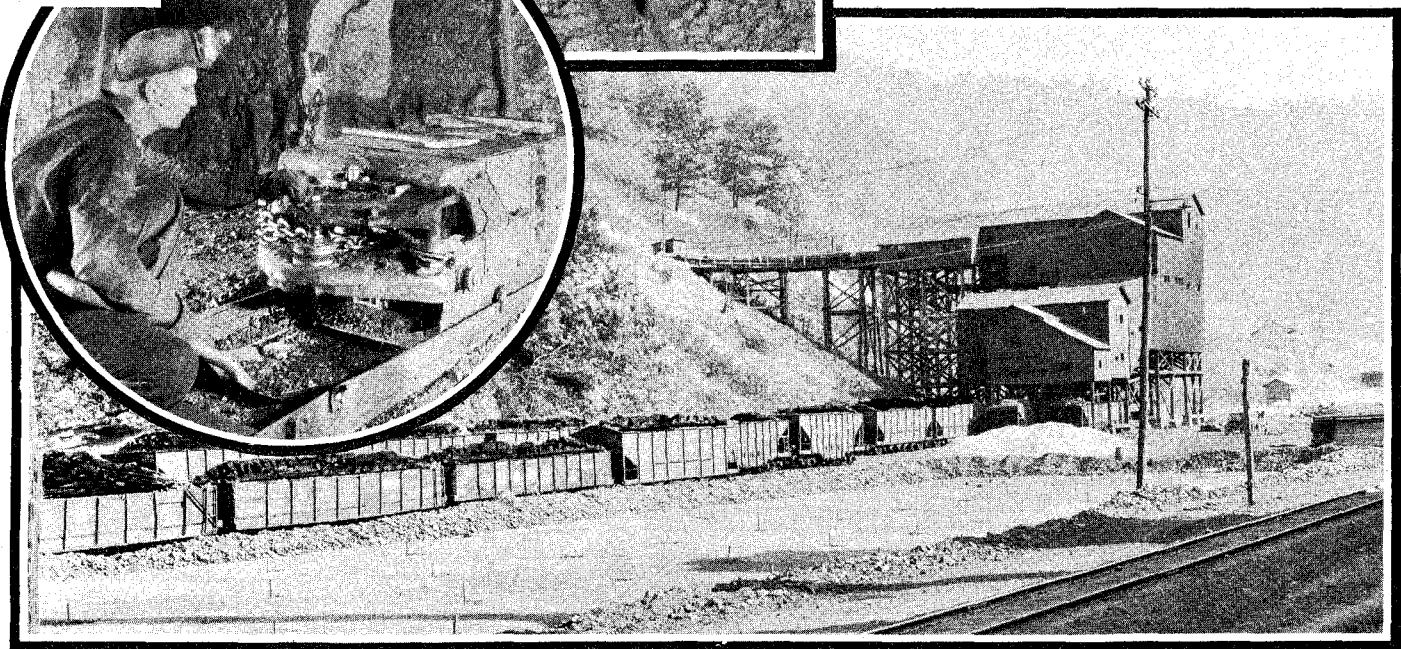
Turning out motor cars in such volume, however, could never be accomplished unless huge streams of supplies flowed constantly into the plants. Industrial disorders, non-production, market manipulations or transportation tieups in the ranks of the suppliers would have a certain reflection in the production of Ford cars. So, a decade ago, the Ford Motor Company took the initial



Loading iron ore at the Imperial Mine, Michigamme, Mich.



Undercutting coal in a Ford coal mine.



One of the Ford Mines at Pond Creek, Ky.

# ITS WITH THE RAW MATERIALS

steps toward securing primary necessities.

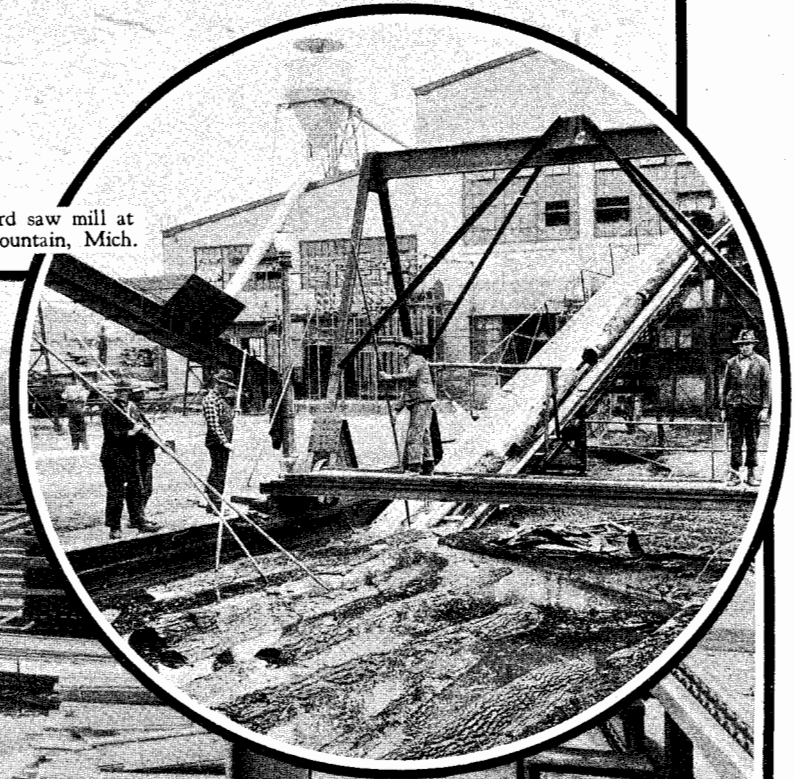
As a result, timber resources were acquired in upper Michigan and Kentucky. Coal mines were opened in Kentucky and West Virginia. Sources of iron, the backbone of the automobile industry, were developed at Michigamme, Mich.

These resources are mighty factors in the production of Ford cars. Not only do they contribute to greater value, but they assure a supply of essentials which cannot be curtailed. The timber tracts, under the Ford system of lumbering, are practically inexhaustible and the coal mines are producing approximately twice the amount of coal used by the company. The iron mines, while not quite equal to the task of supplying all the requirements of the present rate of production, have nevertheless fulfilled their purpose in assuring a constant, certain supply and stabilizing the market.

Loading logs on sled at L'Anse, Mich.



The Ford saw mill at Iron Mountain, Mich.



Dry kiln and stacked lumber at Iron Mountain, Mich.

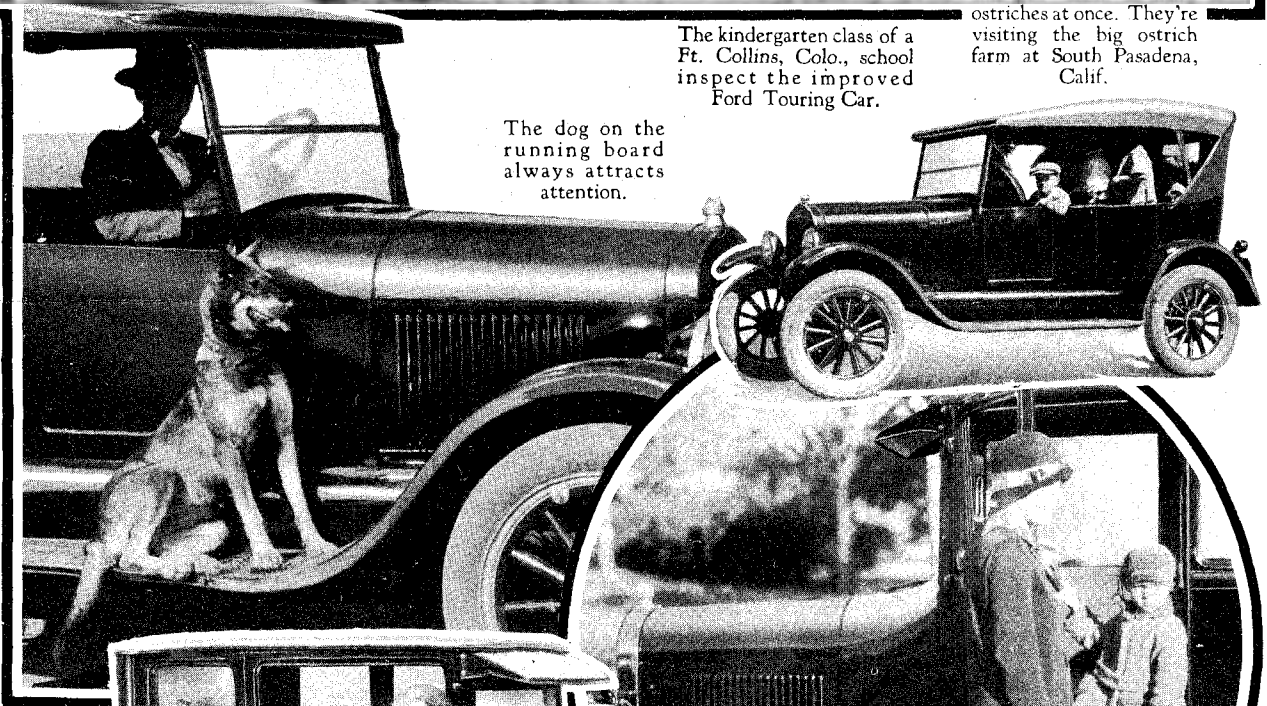
*Ford* PICTORIAL



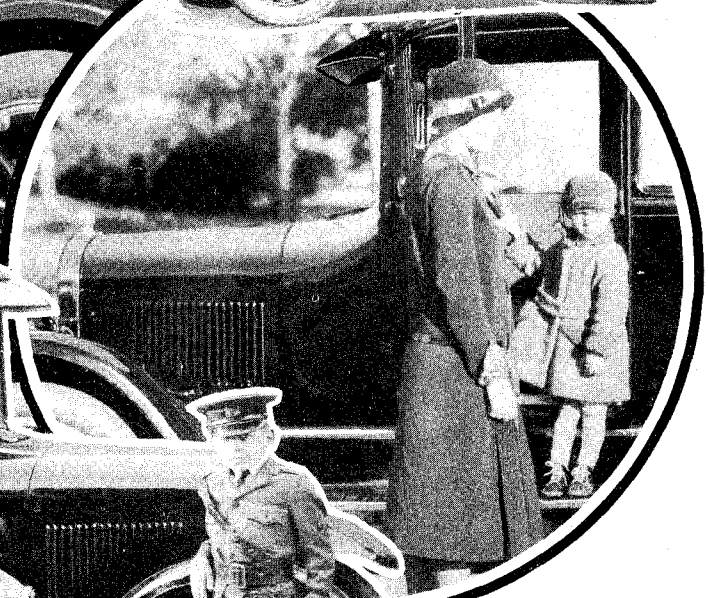
Don't you enjoy this here and get some more

The kindergarten class of a Ft. Collins, Colo., school inspect the improved Ford Touring Car.

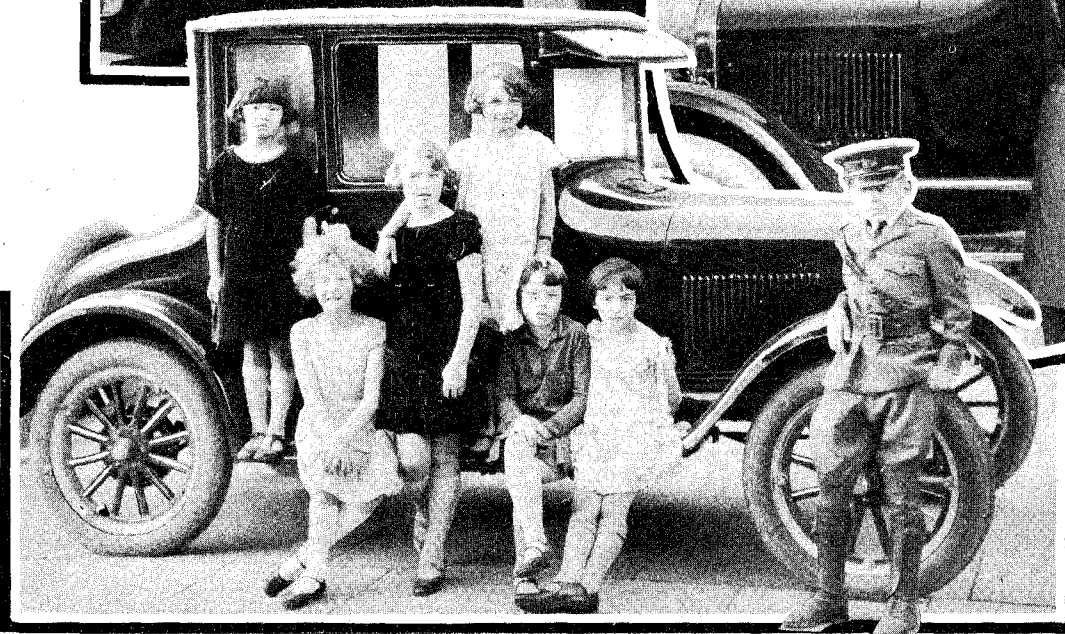
ostriches at once. They're visiting the big ostrich farm at South Pasadena, Calif.



The dog on the running board always attracts attention.

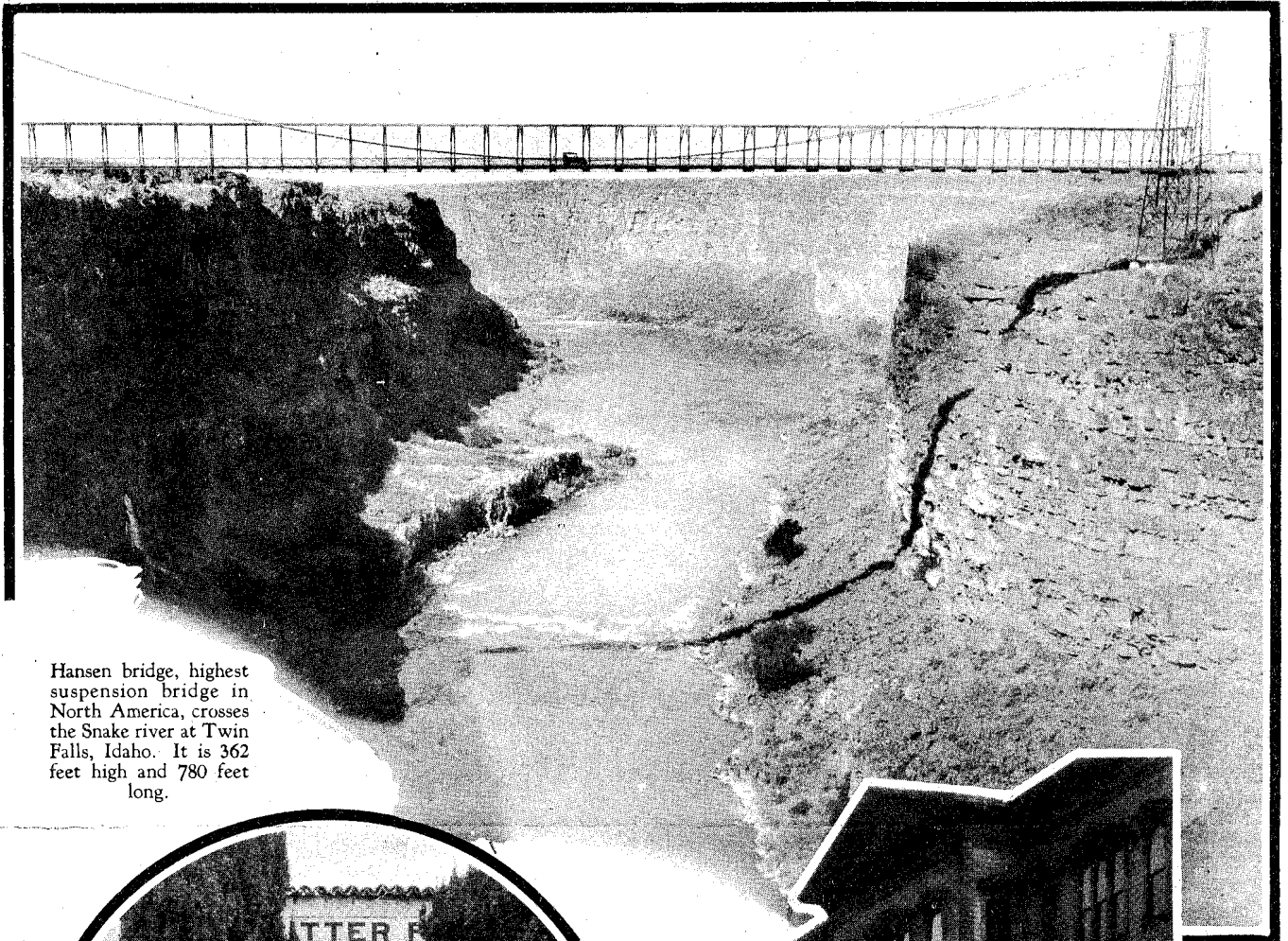


This little Oklahoma tot is out for a ride with mother.



You'd say that these California youngsters liked the Ford Coupe, wouldn't you?



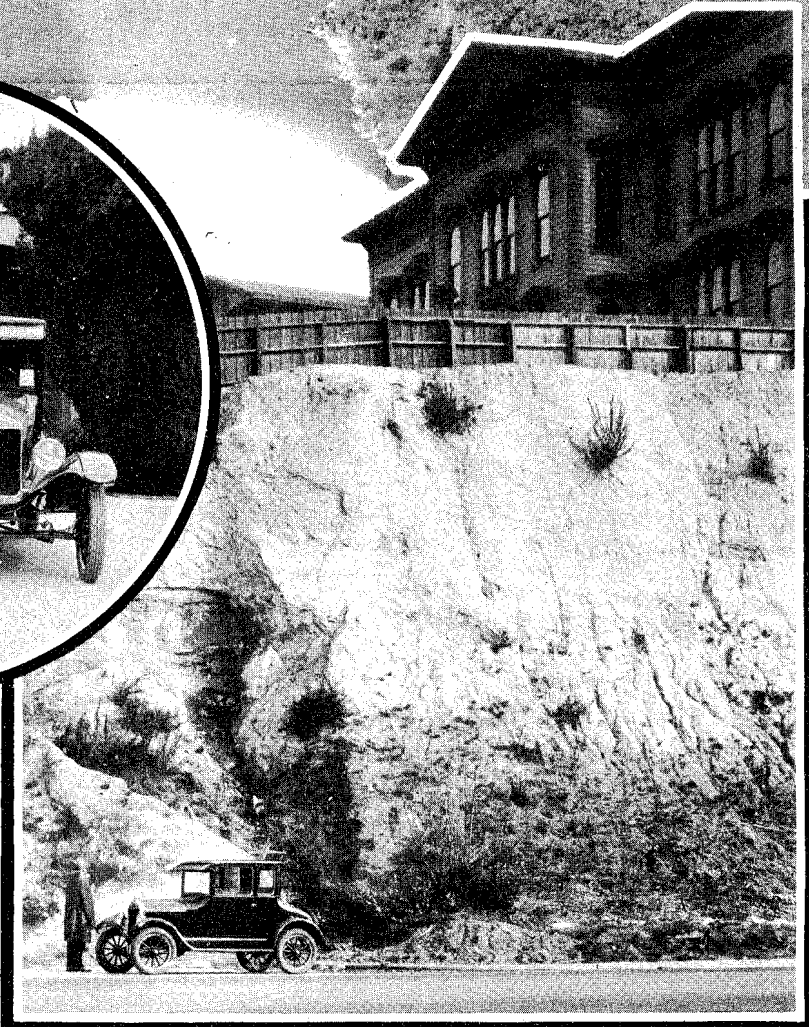


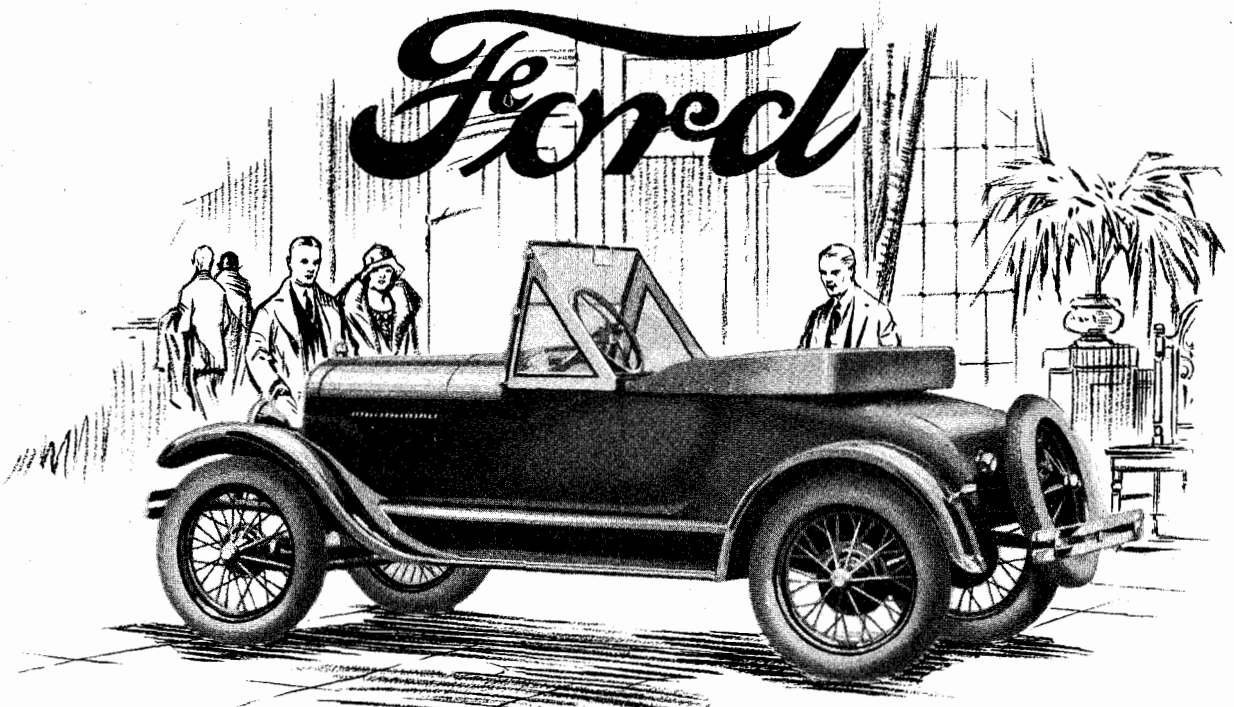
Hansen bridge, highest suspension bridge in North America, crosses the Snake river at Twin Falls, Idaho. It is 362 feet high and 780 feet long.



Sutter's Fort established in 1839 at Sacramento, Calif.

When a hill several hundred feet high was washed away in Seattle to make room for the growing city, a portion was left because property owners objected. The business section has now reached "Denny Hill" and it must come down.





## Ford National Show Week *January 9-16*

You are cordially invited to attend a special exhibition of the improved Ford cars, featuring the latest Ford equipment, at our sales room—January 9 to 16, inclusive.

We are arranging to participate in the Ford National Show, and will display the finest exhibit of Ford passenger cars ever seen.

Visit our display and see for yourself just how strikingly individual the improved Ford cars can be made. We do not believe that you have ever seen more distinctively good looking cars than the ones we shall show.

SPONSORED BY THE

*Ford Motor Company*