

Transportation Unlimited



CHEVROLET *Advance-Design* **TRUCKS**



MODEL 4109 (page 28)



MODEL 4409 (page 29)



MODEL 4408 (page 29)



MODEL 4419 (page 31)



MODEL 6703 (page 33)



MODEL 6108 (page 27)



MODEL 4429 (page 29)



MODEL 6109 (page 28)



MODEL 5108 (page 35)

First in VALUE
First in SALES

109
MODELS
ON
8



MODEL 5408 (page 39)



MODEL 5109 (page 35)

HAULING REQUIREMENTS

WHEELBASES



MODEL 6409 (page 29)



MODEL 6429 (page 29)



MODEL 5419 (page 39)



MODEL 5409 (page 39)



MODEL 6408 (page 29)



MODEL 6419 (page 31)



MODEL 5429 (page 39)



MODEL 6703 (page 30)

CHEVROLET ADVANCE - DESIGN CAB



ROOMY
SAFE
COMFORTABLE
CONVENIENT

CHEVROLET ADVANCE- DESIGN CAB

Chevrolet's improved cab provides the truck driver with the best working conditions ever offered in commercial vehicles—setting new high standards of comfort, roominess, convenience, safety and utility. Unsteel construction, all-steel, all-welded, with cowl, back, top and floor joined inseparably, forms a solid and rigid unit of tremendous strength and durability. The ventilating unit, under the instrument panel, draws air from the outside, and forces stale air out, through vents under the seat. This optional equipment, at extra cost, makes it The Cab That "Breathes"—with a continuous flow of fresh air, its temperature controlled by a thermostat. It provides year-round comfort—a cab free from smoke and stale air, its windshield and windows free from fogging, regardless of the weather.

30 BIG FEATURES For Added



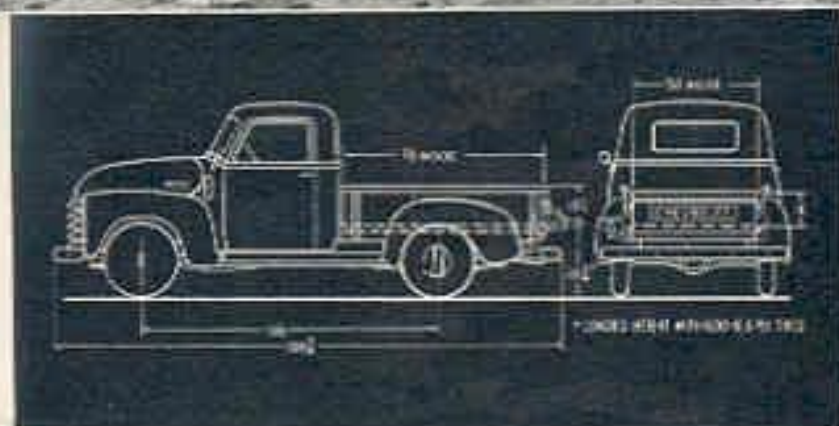
ADJUSTABLE SEATS

As the seat is shifted to suit the driver's stature, the seat cushion and back automatically change their height and slope, for maximum comfort.

GENUINE LEATHER

Seats upholstered in high quality genuine leather, over special padding for extra durability and comfort, are optional at extra cost.

- 1—All-steel cab, completely welded, without an open joint or seam.
- 2—Stronger, more rigid, for longer life.
- 3—Complete ventilation—constant flow of fresh air for year-round comfort; cool in summer, warm in winter. (Equipment obtainable at extra cost.)
- 4—Roomier—more leg room, more seat room.
- 5—Better vision—larger windshield and windows, with narrow pillar-posts.
- 6—Rear-corner windows eliminate blind spots. (De Luxe cab equipment at extra cost.)
- 7—Inclinal seat adjustment for full driver vision, maximum comfort.
- 8—Seat cushion combines durability with greater riding comfort.
- 9—Thorough insulation against heat and noise.
- 10—Full protection from rust.
- 11—Rigid doors—two-piece frames and outer panels' welded construction.
- 12—Improved weather-sealing in windshield and doors.
- 13—Stabilized window regulator for ease of operation.



MODEL 3104

PICK-UP

118-INCH WHEELBASE, MAXIMUM G.V.W. 4000 LB.

This all-around utility truck meets the requirements of nearly every business. The load space, 70" x 50" x 16 $\frac{1}{4}$ " is unobstructed by wheelhouses; 2 stake pockets on each side are provided for the installation of extended sides for increased load height or the mounting of canopy tops for the protection of the load. All body metal is treated to prevent rust. The sturdy end gate has an anti-rattle fastening.

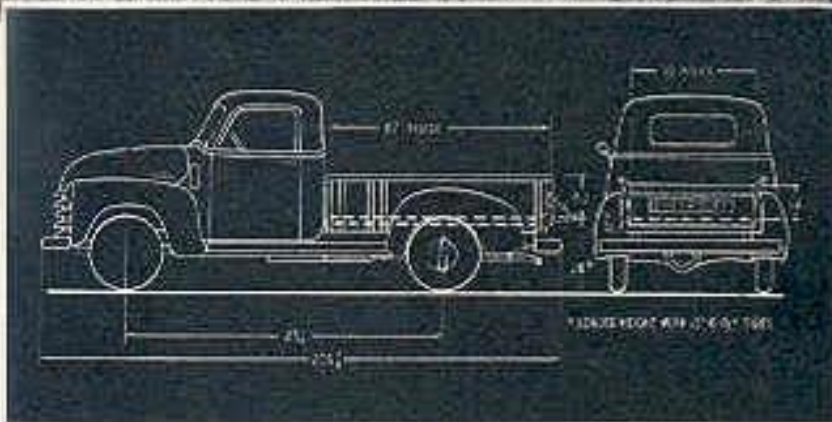
STANDARD EQUIPMENT

Three-Master engine • Front and rear bumper
• Clutch, 9 $\frac{1}{2}$ -in. diameter • Three-speed transmission
• Tires, 6.00-16, 4-ply rating • Single-setting shock absorbers, front and rear.

OPTIONAL EQUIPMENT

Oil-bath air cleaner • Heavy-duty clutch, 10 $\frac{1}{2}$ -in. diameter • Four-speed heavy-duty transmission • Rear spring, 9 leaves, 1730-lb. capacity • Tires, maximum, 15-inch, 4-ply rating • Double-acting shock absorbers.

Medium-Duty



MODEL 3404 *DE LUXE PICK-UP 125 $\frac{1}{2}$ -INCH WHEELBASE, MAXIMUM G.V.W. 5900 LB.

This unit with the all-round utility features of Model 3104 provides additional load space and capacity. The box is 87" x 59" x 16 $\frac{1}{4}$ " and there are no wheelhouses to obstruct the floor. Six stake pockets, three on each side, facilitate the mounting of additional side boards or canopy tops. A rust preventive is applied to all body metal. The sturdy end gate has an anti-rattle fastening, and will hold a 200 lb. weight on the unsupported corner.
 *Optional at extra cost—see page 45.

STANDARD EQUIPMENT

- Theft-Master engine • Front and rear bumper
- Clutch, 10 $\frac{1}{4}$ in. diameter • Three-speed transmission
- Tires, 11-inch, 6-ply rating • Single-acting shock absorbers, front and rear.

OPTIONAL EQUIPMENT

- Oil-bath air cleaner • Heavy-duty radiator, capacity 17 $\frac{1}{2}$ quarts
- Four-speed heavy-duty transmission • Wide base wheels
- Tires, maximum, 7.30-17, 8-ply rating • Double-acting shock absorbers.



MODEL 3805 'DE LUXE PANEL 137-INCH WHEELBASE, MAXIMUM G.V.W. 6700 LB.

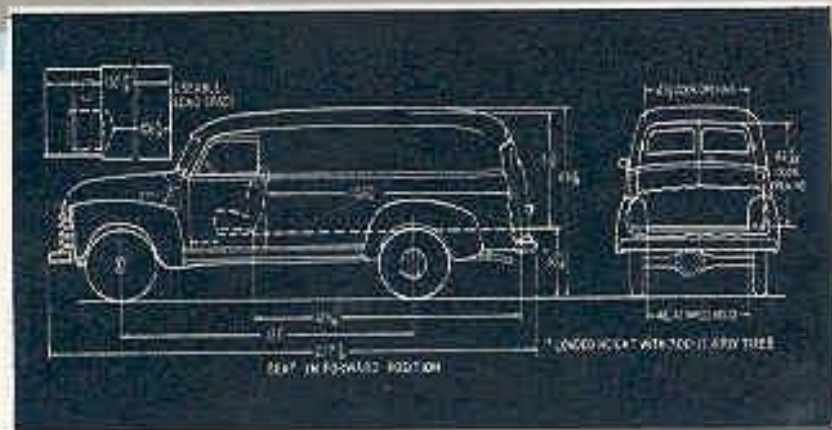
An ideal unit for those businesses which transport merchandise of unusual length and require complete load protection. The usable load space length is up to 150 $\frac{1}{4}$ inches with cubic load space of 262 cubic feet. The large glass area and adjustable seat provide maximum driving vision. A dome light illuminates the load compartment. The rear doors may be locked in an open position for curb side or dock loading. *Optional at extra cost.

STANDARD EQUIPMENT

Thrift-Master engine • Radiator capacity, 15 quarts • Four-speed transmission • Front and rear bumpers • Tires, 7.00-17, 6-ply rating • Single-acting shock absorbers, front.

OPTIONAL EQUIPMENT

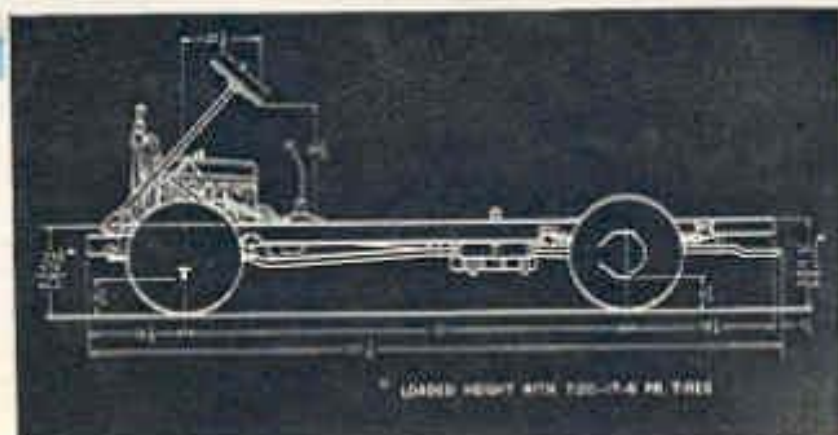
Oil-bath air cleaner • Heavy-duty radiator, capacity 17 $\frac{1}{2}$ quarts • Tires, maximum, 7.50-17, 8-ply rating • Double-acting shock absorbers, front and/or rear • Auxiliary seat.

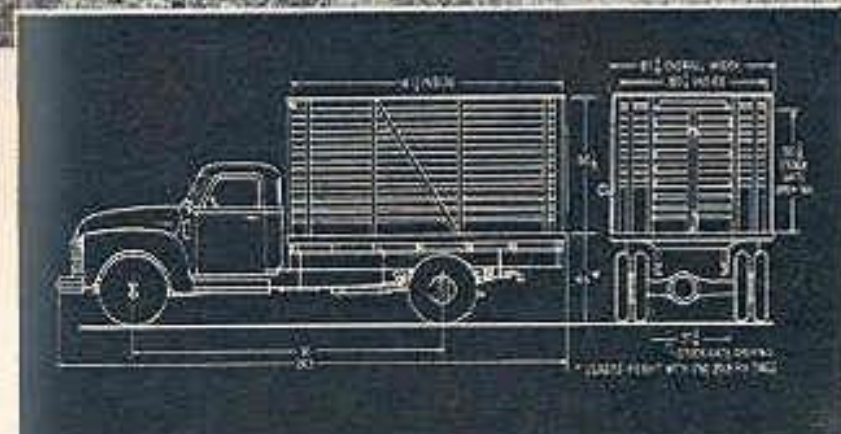
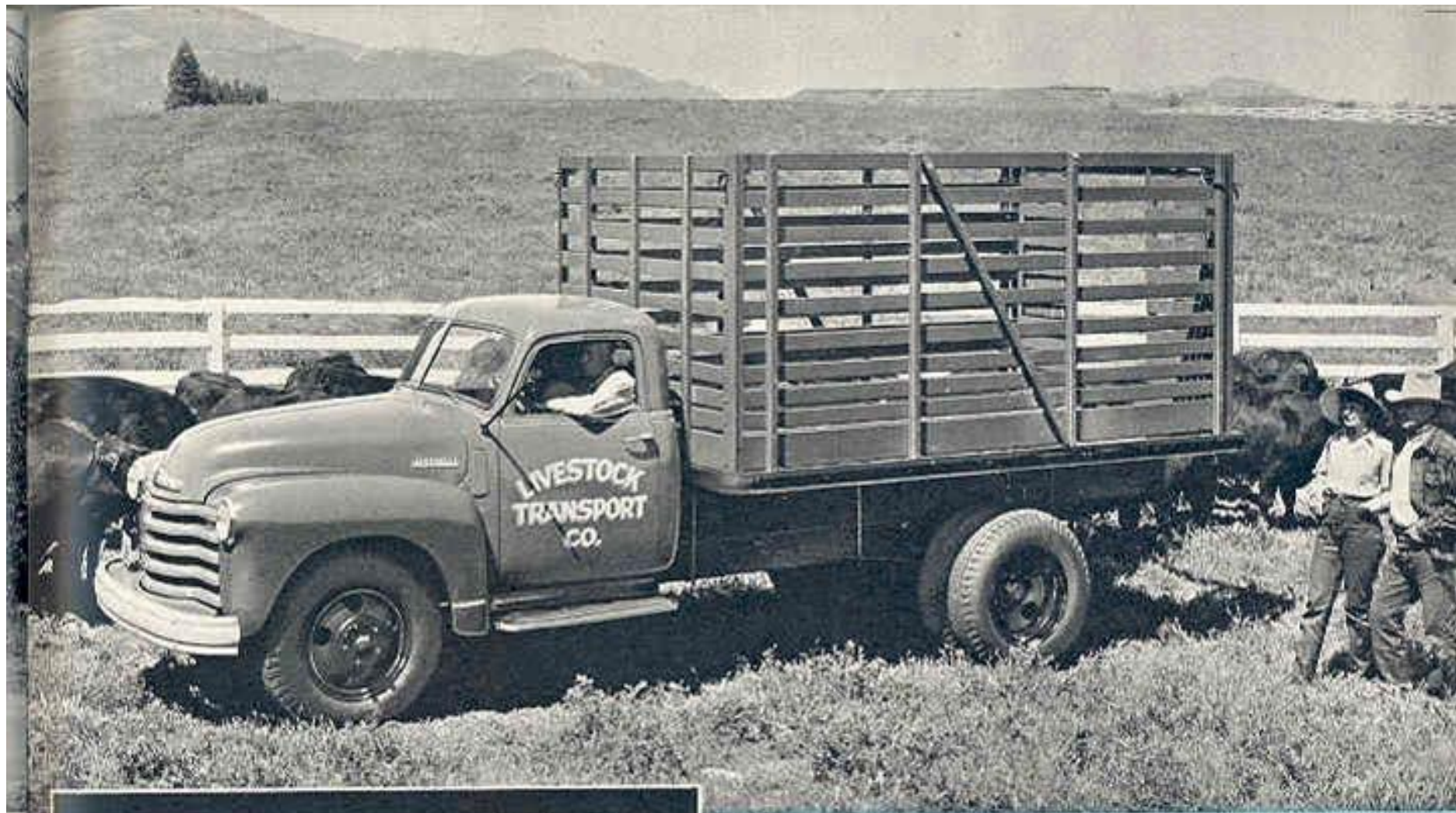




MODEL 3942 **DUEL-DUTY** 137-INCH WHEELBASE, MAXIMUM G.V.W. 10,000 LB.

Both models feature the Thrift-Master engine with vacuum crankcase ventilation and Solenoid-operated starter push button control; a full-floating rear axle, special 5:14 to 1 ratio; single-acting shock absorbers, front and rear on 3742; front only, on 3942; double-acting shock absorbers, front and rear, optional at extra cost; front end stabilizer; rear end stabilizer optional on model 3942; heavy-duty front axle 3500 capacity; a wide choice of tire sizes up to 7.00-18—Spec., dual rear on 3942; foot-operated parking brake; recirculating ball worm steering gear (more details on page 26);





MODEL 4419 HIGH RACK 121-INCH WHEELBASE, MAXIMUM G.V.W. 16,000 LB.

Also available, Models 4419, and 6419S.

Stake sides, 66 $\frac{1}{2}$ " high are ideally suited for the transporting of stock or bulky merchandise. The divided end gate slides to either side for easy loading. Angle irons reinforce the front corners of the body. The sturdy wood floor with flush type steel skid strips, supported by all-steel cross-members, furnishes positive and safe support for the load.

STANDARD EQUIPMENT

Load-Master engine • Oil-bath air cleaner • Heavy-duty radiator • Four-speed synchro-mesh transmission • Six tires (dual rear), 7.50-20, 8-ply rating • Rear axle ratio, 6.17:1 • Hydraulic power brake • Rear springs, 2800-lb. capacity, each • Heavy-duty frame.

OPTIONAL EQUIPMENT

Tires, maximum, 9.00-20, 10-ply rating (dual rear) • Two-speed rear axle • Double-acting shock absorbers, front • Fresh-air heater, defroster and ventilator.



FOR SCHOOL BUS USE 199-INCH WHEELBASE MODEL 6703

new splined rear axle hub connection providing a more positive and safer drive; advance wide-base wheels, reducing side-sway and prolonging life of tires; recirculating ball-bearing steering gear; thirty-gallon fuel tank; governor set for 35 m.p.h.; 35 amp. generator; 19-plate Delco battery.

STANDARD EQUIPMENT

Load-Master engine • Oil-bath air cleaner • Heavy-duty radiator, capacity 17½ quarts • Four-speed synchro-mesh transmission • Special heavy-duty bus frame • Six tires (dual rear), 7.50-26, 8-ply rating • Rear axle ratio, 6.11:1 • Hydraulic power brake • Two-stage rear springs, 2000-lb. capacity, each • Governor, set at 35 m.p.h.

OPTIONAL EQUIPMENT

Tires, maximum, 8.25-20, 10- or 12-ply rating (dual rear) • Two-speed rear axle • Tux-Stop brake • Double-acting shock absorbers.



LOADING HEIGHT WITH 100-30-8 TIRE



MODEL 3703 CHASSIS AND CAB 155-INCH WHEELBASE, MAXIMUM G.V.W., 16,000 LB.

Cab-over-engine model for special bodies up to 17½ feet long. Load-Master engine; four-speed synchro-mesh transmission; front axle 4500-lb. rating; rear axle 13,000-lb. rating; optional two-speed rear axle; heavy-duty frame; heavy-duty springs; tires as large as 9.00-20, 10 pr., dual rear, provide a sturdy chassis for extra long heavy loads.

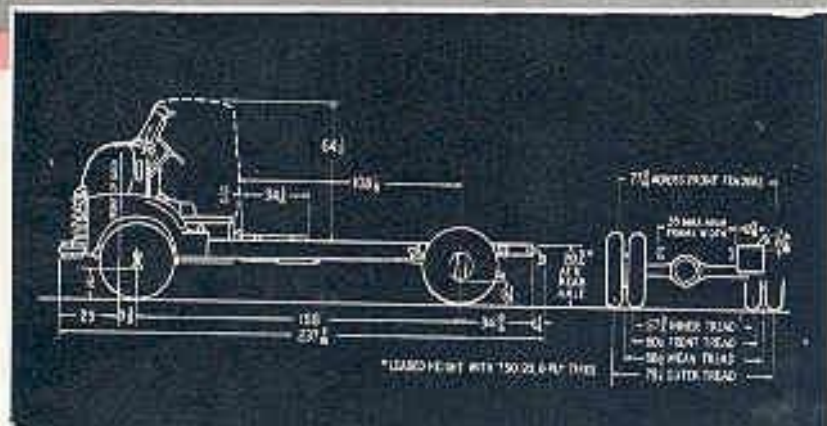
STANDARD EQUIPMENT

Load-Master engine • Governor, set at 2000 r.p.m. • Oil-bath air cleaner • Heavy-duty radiator, capacity 17½ quarts • Four-speed synchro-mesh transmission • Six tires (dual rear), 7.50-20, 8-ply rating • Rear axle ratio, 6.12:1 • Hydraulic brake • Rear springs, 7800-lb. capacity, each.

OPTIONAL EQUIPMENT

Tires, maximum, 9.00-20, 10-ply rating (dual rear) • Two-speed rear axle • Double-acting shock absorbers, front • Fresh-air heater, defroster and ventilator.

(The latter six shown)





SPECIAL

Manufacturers offer a great variety of vocational and specialized units for use with Chevrolet chassis, producing equipment for virtually every use in the service of state, county and city governments, public utilities, contractors, and others having specialized needs. Installation of

1—**Ho-Lift Hopper Body**—Favored by road dealers; available in capacities of 3 to 6 tons. 2—**Beverage Trucks**—Bodies up to 16 feet long; available with racks or insulated compartments. 3—**Side-Alais Delivery**—For milk dealers, bakers, dry cleaners, etc. 4—**Utility**

Trucks—Rolling work shops for gas, light and telephone companies. 5—**Oil Field Trucks**—Completely equipped for all types of oil well servicing. 6—**Heavy-Duty Vans**—Aluminum, or all-steel; equipped with tandem-drive or trailing third axle. 7—**Tank Trucks**—Utility vehicle for local deliveries; compartments

for barrels and packaged goods available. 8—**Van-Penal Trucks**—For bakers and florists; built-in compartments and shelves available. 9—**Funeral Cars**—Combination body, quickly converted to hearse or ambulance. 10—**Service Trucks**—Complete with all types of towing equipment. 11—**Fire Trucks**—

Available with apparatus approved by National Board of Fire Underwriters. 12—**Trailer Equipment**—Bodies available in all-steel or aluminum; refrigerated and/or insulated. 13—**Ice Delivery**—Correctly designed and equipped to handle load efficiently.