

CITROËN C3



CITROËN





# THE CITROËN RANGE

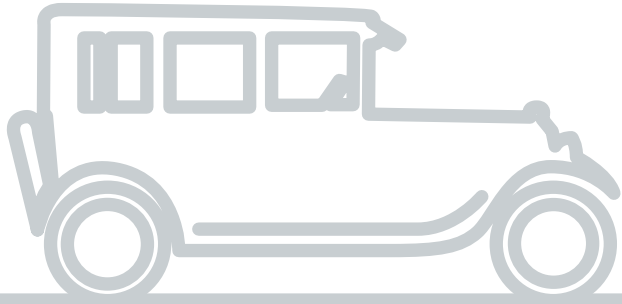
Here at Citroën we have come a long way since we created the world's first all-steel bodied car. Today we are recognised for our innovative technology and original designs. Our world-leading, fuel-efficient engines respect the environment and our outstanding safety features guarantee one of the safest driving environments available. We are fully committed to delivering outstanding customer service to back up the fantastic Citroën Model Range.

We're proud to be part of such an iconic brand and we look forward to helping you choose a car that means you too can enjoy the driving experience offered by Citroën's Créative Technologie.



**Stéphane Le Guevel**  
Director General  
Citroën UK





1924

Citroën creates the B10 and the world's first all-steel bodied car is born.

1949

Twenty five years later, the iconic 2CV is launched and stays in production for over 5 decades!



A HISTORY...



1989

The prestigious, XM makes its debut, showcasing Citroën's advanced Hydractive computer controlled selflevelling suspension.



2008

The C4 WRC proves to be an all-conquering World Rally Champion. Citroën takes the Manufacturers' Title in 2008, 2009 and 2010.

2010

The innovations keep coming – quietly – with Citroën Survolt concept. A thrilling, clean, whisper quiet electric car.



2013

Never content to rest on our laurels, the innovative Citroën C3 Hybrid Air is unveiled at the Geneva Motor Show.

...OF INNOVATION



# YOU & YOUR C3

Citroën C3 shows that generous space and a compact profile work beautifully together, just as chic style and practicality do. Well equipped, advanced and efficient, this is the small family hatchback that responds to your needs.



# FUSS-FREE STYLE

You'll appreciate the design of Citroën C3 at a glance, but great style gets better the longer you look. There's no unnecessary clutter, just smooth bold curves and sleek surfaces that give the car its unique personality. Despite being very compact, Citroën C3 has real presence.





The elegant, sweeping panoramic Zenith windscreen, optional on Edition and standard on Platinum versions, bathes the interior in natural light and enhances the ambience.



## DETAILS THAT COUNT

Because Citroën C3 style is about individuality, its details really count. Look at the way the distinctive front grille and proud trademark chevrons flow together for example. Chrome door handles, standard on Platinum versions, add to the attractive look.



From Edition level you also see the unmistakable signature of LED Daytime Running Lights and beautifully engineered alloy wheels. It all adds up to create a chic and distinctive small 5-door family car.



# A PERFECT FIT

That smooth characterful exterior that makes Citroën C3 so individual surrounds an interior that is amazingly spacious and useful. Open the tailgate and you will discover 300 litres of well-shaped boot space – and that's with five people sitting in comfort. Fold the rear seats flat and you're looking at 1.19 metres of load length, ready to accommodate all kinds of loads.





**1.19**  
**METRES**  
OF LOAD LENGTH

You'll notice that distinguished features such as the crisp bright LED Daytime Running Lights and sculpted light alloy wheels on Edition and Platinum versions, make this a stylish family car with plenty of substance.





## EQUIPPED FOR DRIVING

Citroën C3 puts all the technology you need for effortless relaxed driving instantly within reach. It's equipped to make all your journeys a pleasure. At the heart of this driver focused technology is a 7 inch touchscreen which is standard on Platinum and optional on Edition models.

You've got all the benefits of colour satellite navigation and a reversing camera, where fitted, that both use the 7 inch 16:9 ratio screen to ensure perfect route finding and pinpoint manoeuvres – every time. Parking sensors emit an audible warning that keeps you bump free once you arrive and find a space. Plus, a multi-function trip computer delivers all the important information such as current fuel consumption, distance covered and remaining range.



# MADE FOR COMFORT

Inside Citroën C3, innovative technology makes life really comfortable for everyone. Platinum versions come with automatic air conditioning as standard, which maintains a perfect interior environment in all weathers, and can be easily fine-tuned using the clear circular multi-function dials. To enhance the interior ambience further, you can select the optional scented air freshener that diffuses a choice of fragrances through the central air vents.







A seamless combination of communication and entertainment; Bluetooth® handsfree plus media streaming with USB socket also features, and is standard on Edition and Platinum trim levels.



# READY FOR ANYTHING

Driving Citroën C3 will always inspire your confidence, because it's designed and made to. ABS with Electronic Brakeforce Distribution, Emergency Braking Assistance and Electronic Stability Control each work to keep you firmly in control in all circumstances and conditions. If you have to brake really hard or change direction suddenly, the hazard warning lights flash automatically.



Every part of Citroën C3 helps to keep you safe. For example the large glazed area gives you exceptional all round visibility, so you don't have to worry about hidden hazards or blind spots.

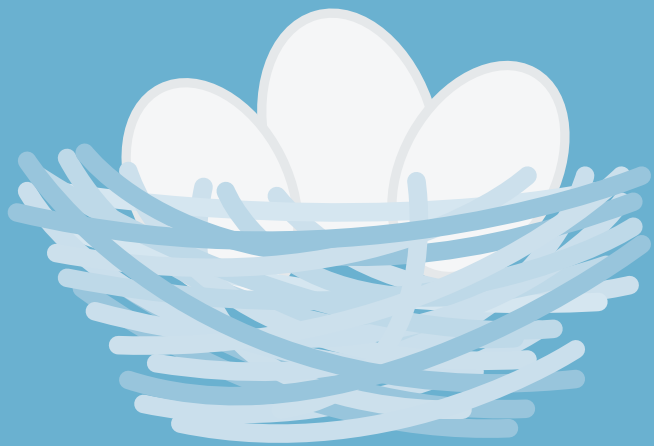


CITROËN C3

# LOOKING AFTER EVERYONE

When your family is on board, nothing is more important than all round protection. Citroën C3 provides two front airbags and two lateral airbags as standard, plus side curtain airbags on Edition and Platinum versions. Naturally, there are Isofix points on the rear seats to ensure maximum safety and comfort for children and there's also a really useful electronic child lock which can be activated and deactivated from the front, for complete peace of mind.





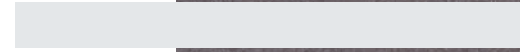
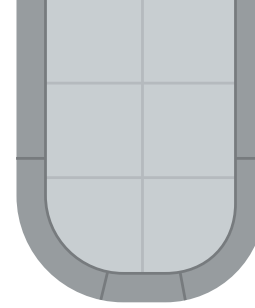
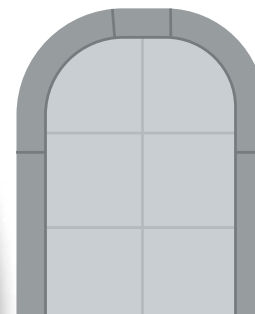
Jump in to start your journey and a warning light and audible signal will remind you to fasten your seat belt before setting off. Citroën C3 is simply a safe way to travel for everyone.

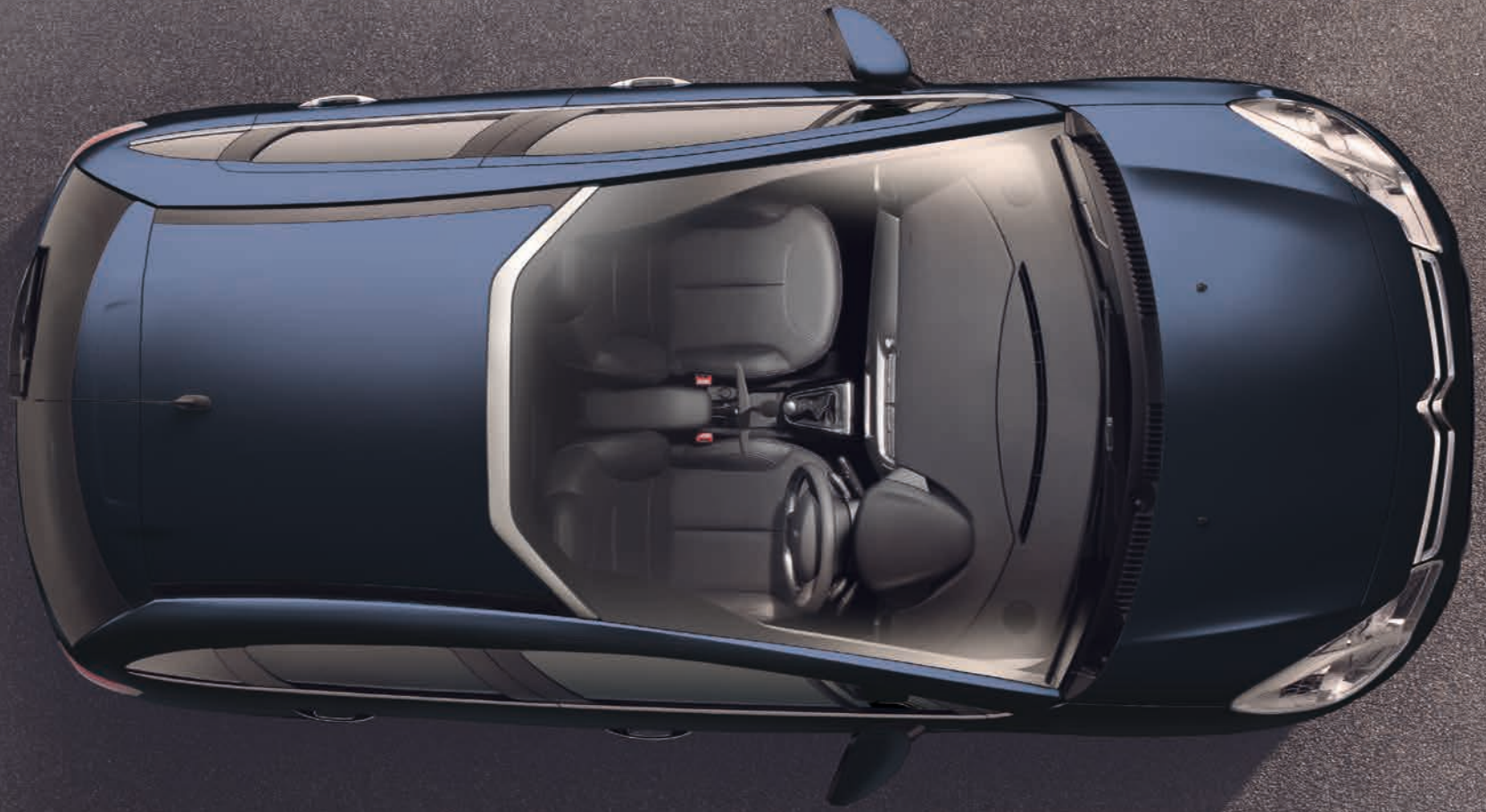


# COMPACT INSPIRATION

The stylish, individual profile of Citroën C3 turns heads, but it's surprisingly compact. Despite being roomy and comfortable for five people, its actually only 3941mm long and 1728mm wide – just right for nipping around the city streets.

Escape from the city and you'll find that Citroën C3's taut chassis, just-right controls and minimal exterior dimensions help to make it sure footed and good fun at every turn.



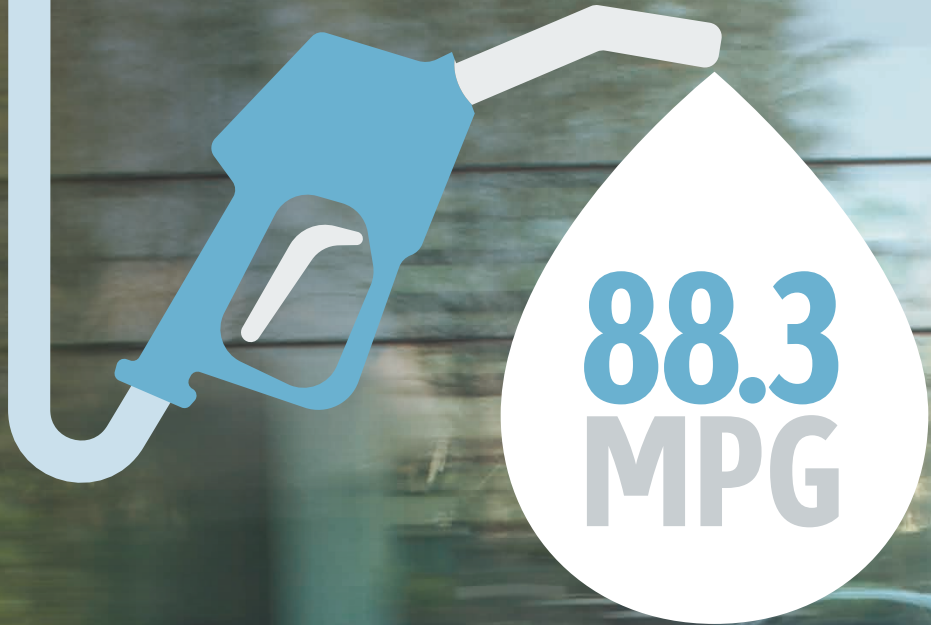


# FUEL YOUR ENTHUSIASM

Citroën C3 lets you make the most of every drop of fuel, because it mixes individuality, comfort and driving pleasure with extraordinary economy. And to help you take full advantage of its advanced efficiency there's a Gear Efficiency Indicator too to tell you the best time to change gear for optimal mileage.

There are two diesel versions to choose from. Select the sophisticated BlueHDi 100 S&S manual version and you'll benefit from fuel economy up to 83.1 mpg on the official combined cycle.





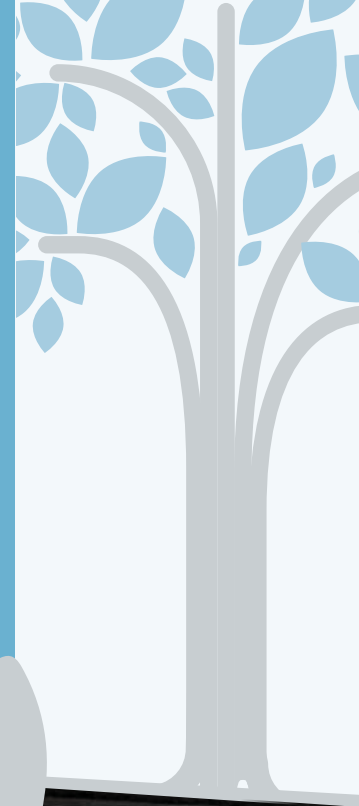


## DOWN WITH CO<sub>2</sub>

Your Citroën C3 has a small footprint in more ways than one. Aerodynamic, light and full of innovative thinking, it treads lightly on every trip. With advanced Citroën engineering, it takes CO<sub>2</sub> to new lows without compromising your drive.



There's a range of smooth punchy petrol and diesel engines to choose from that are amongst the most efficient in their class. Go for the BlueHDi 100 S&S manual and you will achieve an impressive 87g/km CO<sub>2</sub>. It's better for the environment and for your budget too.





A close-up photograph of a woman's face, focusing on her eyes and hair. She has dark, expressive eyes and vibrant red hair. The image is partially overlaid with a blue graphic element on the left side, which contains the text 'UNIQUE THREE'.

# UNIQUE THREE

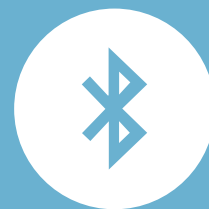


Citroën C3 reflects your individuality. Chic and distinctive, it's available in three stylish versions, each with a unique blend of signature design elements, technology and luxury touches. Choosing the version that sparks your imagination will be a matter of following your feelings: more like meeting a new friend than thinking about specifications. You'll just 'click'.



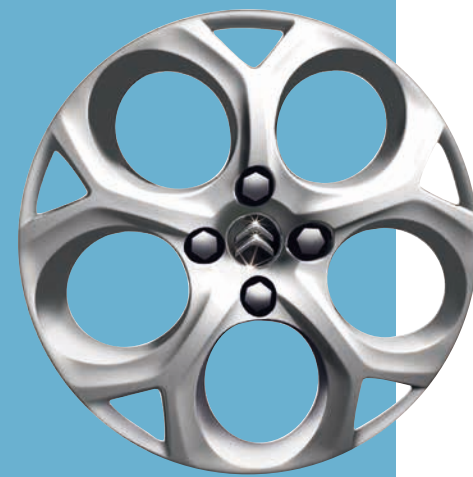
## VT. START IN STYLE

The range begins on a high. Here you'll enjoy an extensive standard specification that focuses the Citroën C3's true qualities. VT stands for effortless style, comfortable space, advanced technology and thoughtful details – in a single seamless package.



## EDITION. FINE-TUNED LUXURY

Go for Edition and you will enjoy a carefully designed combination of extra style, comfort and entertainment features that are much more than just 'add ons'. Everything is chosen and designed to enhance core strengths, so you can appreciate what makes Citroën C3 characterful and welcoming that much more.





# PLATINUM. EQUIPPED TO AMAZE

It's not just the standard panoramic Zenith windscreen or the automatic air conditioning. It's not the beautiful 17 inch 'Clover' alloy wheels or subtle interior mood lighting. The Platinum trim level is a definitive specification that leaves you wanting for nothing.





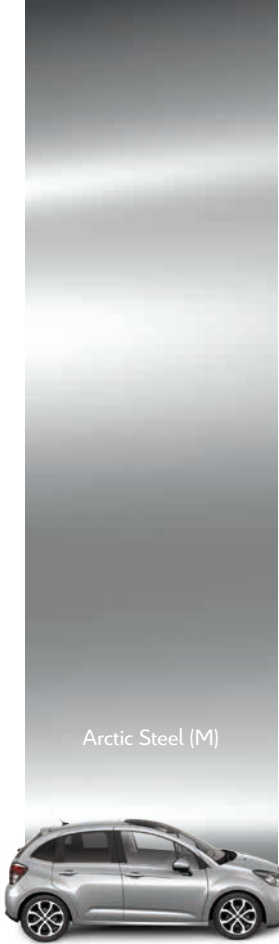
# DREAM IN COLOUR

The confident curves and fuss-free surfaces of Citroën C3 make a great blank canvas when it comes to choose your ideal body colour. Take a look at the range of eleven stunning shades, then feel free to express yourself.

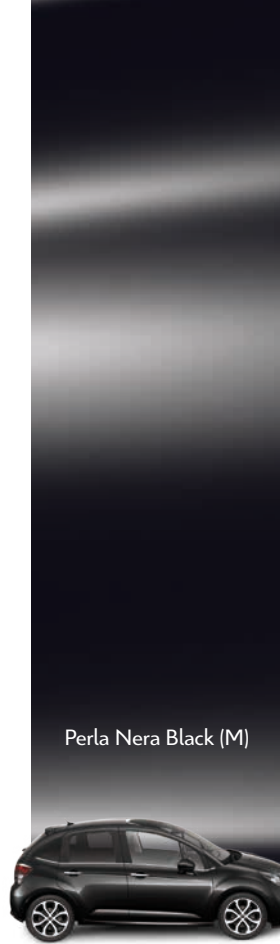




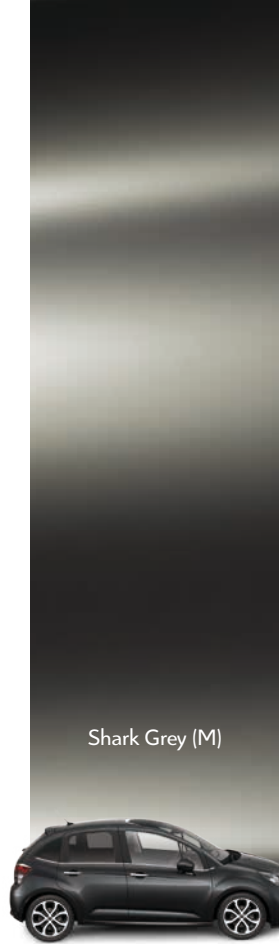
Ruby Red (M)



Arctic Steel (M)



Perla Nera Black (M)



Shark Grey (M)



Karma Purple (M)



Pearl White (P)

[M] Metallic [P] Pearlescent Please note: Colours and pictures shown are for illustration purposes only. Please consult your Dealer for definitive colour and trim/upholstery details.



OVER TO  
YOU

This is the point where Citroën C3 can spring into life. Take a look at the product specification brochure and start to shape the car that best reflects you in every way. The next step is to make it happen. Simply get in touch with your local Authorised Citroën Dealer to arrange a test drive.  
**To find out more go to [citroen.co.uk](http://citroen.co.uk)**





## CRÉATIVE TECHNOLOGIE

[www.citroen.co.uk](http://www.citroen.co.uk) | CITROËN UK Ltd. Pinley House, 2 Sunbeam Way, Coventry CV3 1ND.

CITROËN prefers **TOTAL**



This brochure is made from paper from a well-managed forest. Citroën support responsible use of forest resources. Please don't throw me away, give me to a friend or recycle me.

NOTE: Images and specification descriptions are dependent on trim level and options specified. Every endeavour has been made to ensure that the information and details contained in this brochure were accurate at the time of going to press February 2016. However the company reserves the right, whilst preserving the essential characteristics of the models described, to introduce at any time modifications, changes of details, equipment or accessories. Every effort will be made to bring this brochure up to date, but in order to avoid any misunderstandings please consult your Dealer. The Citroën UK Website contains full information on all Citroën products and offers available in the UK, together with details of our environmental and recycling policies. The site address is: [www.citroen.co.uk](http://www.citroen.co.uk) or you can contact Citroën directly via [cuk\\_contactcentre@citroen.com](mailto:cuk_contactcentre@citroen.com).

CITROËN C3  
PRODUCT SPECIFICATIONS



# OVER TO YOU...

The power of three. The Citroën C3 range is a sensory treat, whether you're admiring its sculpted profile, relaxing in stylish comfort, enjoying the tactile quality or even personalising the air freshening fragrances.

## VT. AFFORDABLE COMFORT.

Citroën C3 VT specification includes:

- ABS with Electronic Brakeforce Distribution and Emergency Braking Assistance
- Electronic Stability Control
- Automatic activation of hazard warning lights
- Driver, front passenger and front lateral airbags
- Variable power assisted steering
- Remote central locking with deadlocks
- RDS radio/MP3 CD player with four speakers, AUX socket and steering mounted controls
- Rear split/folding and reclining seats
- Halogen headlights
- Electrically adjustable door mirrors
- Front electric windows
- 12 volt socket in cabin
- Automatic door and boot locking
- Electronic child locks
- Rear ISOFIX mounting points
- Multi-function on-board trip computer
- Height-adjustable front seats
- 15 inch 'Airflow' wheel covers – PureTech 68 manual version only
- 15 inch 'Asterodea' wheel covers – BlueHDi 75 manual version only
- Body colour front and rear bumpers
- Tyre pressure monitor

	VT	Edition	Platinum
<b>PETROL ENGINE AVAILABILITY</b>			
PureTech 68 manual	•	•	
PureTech 82 manual		•	•
PureTech 82 S&S ETG			•
PureTech 110 S&S manual			•
<b>DIESEL ENGINE AVAILABILITY</b>			
BlueHDi 75 manual	•	•	•
BlueHDi S&S 100 manual			•



## EDITION. CONCENTRATED LUXURY.

Citroën C3 **Edition** specification in addition to VT includes:

- Air conditioning
- Curtain airbags
- Cruise control with speed limiter
- Bluetooth® handsfree and media streaming with USB socket
- Leather steering wheel
- Rear parking sensors
- Body colour door handles
- Body colour door mirrors
- LED Daytime Running Lights (DRLs)
- 16 inch 'Valonga' alloy wheels
- Space saver steel spare wheel

## PLATINUM. INTELLIGENT INDULGENCE.

Citroën C3 **Platinum** specification in addition to Edition includes:

- Panoramic Zenith windscreen
- Automatic air conditioning
- Integrated dashboard scented air freshener
- Rear electric windows
- Front fog lights
- Perimetric and volumetric alarm
- Electrically heated folding door mirrors
- 17 inch 'Clover' alloy wheels
- Tinted rear windows
- 7 inch touch screen
- DAB radio
- Chrome window trims and insert on tailgate
- Front armrest
- Interior mood lighting
- Front and rear luxury velour carpet mats



# OPTIONS

Options are about freedom of choice. Freedom is about going where you want and doing as you please. The Citroën C3 options invite you to do so in style, safety and comfort.

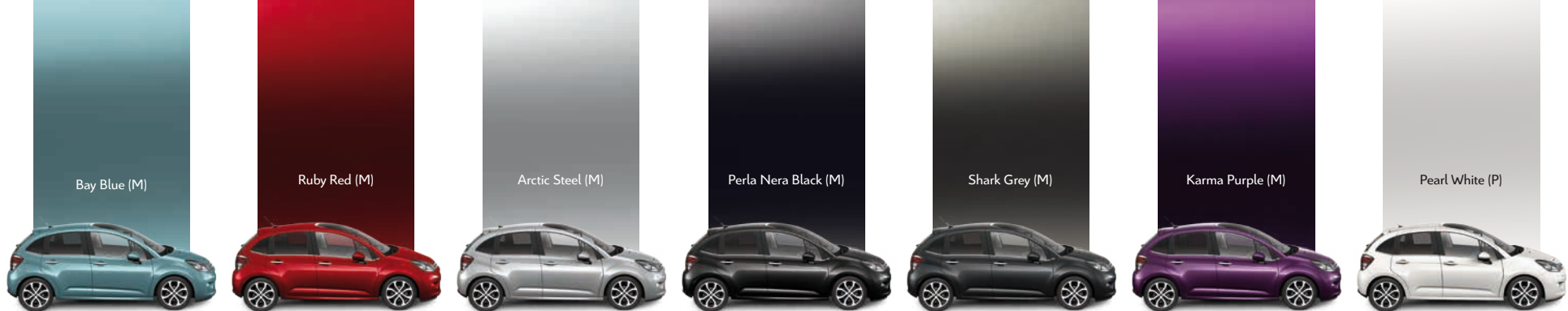


CITROËN C3 OPTION SUMMARY		VT	Edition	Platinum	BASIC R.R.P.	V.A.T.	TOTAL R.R.P.
<b>PAINT</b>							
	Flat paint (Polar White)	o	o	o	£0.00	£0.00	<b>£0.00</b>
	Flat paint (Sport Red)	o	o	o	£208.33	£41.67	<b>£250.00</b>
	Metallic paint	o	o	o	£412.50	£82.50	<b>£495.00</b>
	Pearlescent White	o	o	o	£608.33	£121.67	<b>£730.00</b>
<b>EXTERIOR STYLE</b>							
	Chrome door mirrors			o	£41.67	£8.33	<b>£50.00</b>
	17 inch White 'Clover' alloy wheels			o	£41.67	£8.33	<b>£50.00</b>
	Space saver steel spare wheel	o			£62.50	£12.50	<b>£75.00</b>
<b>INTERIOR STYLE</b>							
	Black leather			o	£666.67	£133.33	<b>£800.00</b>
<b>COMFORT &amp; CONVENIENCE</b>							
	Panoramic Zenith windscreen		o		£250.00	£50.00	<b>£300.00</b>
	<b>Visibility Pack (Edition)</b> – Automatic air-conditioning, auto lights and wipers and auto-dimming electrochrome rear view mirror		o		£541.67	£108.33	<b>£650.00</b>
	<b>Visibility Pack (Platinum)</b> – Auto lights and wipers, auto-dimming electrochrome rear view mirror and additional mood lighting			o	£133.33	£26.67	<b>£160.00</b>
<b>IN-CAR ENTERTAINMENT</b>							
	7 inch touchscreen with DAB radio, Bluetooth®, USB socket		o <sup>1</sup>		£125.00	£25.00	<b>£150.00</b>
	7 inch touchscreen with DAB radio, Bluetooth®, USB socket & eMyWay satellite navigation including 5 years European map updates (Edition)		o <sup>1</sup>		£541.67	£108.33	<b>£650.00</b>
	7 inch touchscreen with DAB radio, Bluetooth®, USB socket & eMyWay satellite navigation including 5 years European map updates (Platinum)			o <sup>1</sup>	£416.67	£83.33	<b>£500.00</b>
	7 inch touchscreen with DAB radio, Bluetooth®, USB socket & eMyWay satellite navigation including 5 years European map updates and Hi-Fi			o <sup>1</sup>	£583.33	£116.67	<b>£700.00</b>
	7 inch touchscreen with DAB radio, Bluetooth®, USB socket & eMyWay satellite navigation including 5 years European map updates, reversing camera and rear electric windows (Edition)			o <sup>1</sup>	£833.33	£166.67	<b>£1,000.00</b>
	7 inch touchscreen with DAB radio, Bluetooth®, USB socket & eMyWay satellite navigation including 5 years European map updates, reversing camera (Platinum)			o <sup>1</sup>	£625.00	£125.00	<b>£750.00</b>
<b>SAFETY &amp; SECURITY</b>							
	Citroën Connect Box		o <sup>1</sup>	o <sup>1</sup>	£200.00	£40.00	<b>£240.00</b>

- Standard equipment
- Optional factory fitted equipment

<sup>1</sup> Mobile phone compatibility can vary by phone manufacturer. Please consult your Dealer for further compatibility information.





## COLOURS TRIMS AND WHEEL OPTIONS



**Bay Blue cloth**  
Standard on VT versions



**Black/Grey 'Liberia' Cloth**  
Standard on Edition and Platinum versions



**Black leather**  
Optional on Platinum versions

**15 inch 'Airflow' wheel covers**  
Standard on VT<sup>1</sup>



**15 inch 'Asteroidea' wheel covers**  
Standard on VT<sup>2</sup> versions



**16 inch 'Valonga' Alloy wheels**  
Standard on Edition versions



**17 inch black 'Clover' Alloy wheels**  
Optional on Edition. Standard on Platinum versions



# EQUIPMENT SPECIFICATION



	VT	Edition	Platinum
<b>SAFETY &amp; SECURITY</b>			
ABS with Electronic Brakeforce Distribution and Emergency Braking Assistance	•	•	•
Electronic Stability Control	•	•	•
Driver, front passenger and front lateral airbags	•	•	•
Curtain airbags	•	•	•
Front seat belt pre-tensioners with force-limiters	•	•	•
Five three-point inertia reel seat belts	•	•	•
Unfastened seat belt warning for front seats	• <sup>1</sup>	•	•
Automatic activation of hazard warning lights	•	•	•
Remote central locking	•	•	•
Child lock control and indicator	•	•	•
Automatic door and boot locking	•	•	•
Rear ISOFIX mounting points	•	•	•
Cruise control with speed limiter		•	•
Perimetric and volumetric alarm			•
Space saver steel spare wheel	○	•	•
<b>LIGHTING &amp; VISIBILITY</b>			
Panoramic Zenith windscreen		○	•
Halogen headlights	•	•	•
Electrically adjustable door mirrors	•	•	•
Electrically heated folding door mirrors			•
Front courtesy reading lights	•	•	•
Front fog lights			•
Interior mood lighting			•

- Standard equipment
- Optional factory fitted equipment

- <sup>1</sup> Excludes front passenger seat on VT versions.
- <sup>2</sup> BlueHDi 75 manual version only.

	VT	Edition	Platinum
<b>DRIVER INFORMATION</b>			
Multi-function on-board trip computer (time/date, external temperature, current fuel consumption, average fuel consumption, distance covered, average speed and range on remaining fuel)	•	•	•
Gear Efficiency Indicator	•	•	•
Tyre pressure monitor	•	•	•
<b>STYLE</b>			
<b>EXTERIOR</b>			
15 inch 'Astrodea' wheel covers	• <sup>2</sup>		
15 inch 'Airflow' wheel covers	• <sup>3</sup>		
16 inch 'Valonga' alloy wheels		•	
17 inch 'Clover' alloy wheels			•
Body colour front and rear bumpers	•	•	
Body colour front bumper with chrome insert and rear bumpers			•
Black door handles	•		
Body colour door handles		•	
Chrome door handles			•
Black door mirrors	•		
Body colour door mirrors with black base		•	•
Chrome window trims			•
Chrome insert on tailgate			•
Dark tinted rear windows			•
<b>INTERIOR</b>			
'Soft-touch' effect upper dashboard	•	•	•
White lower dashboard	•		
Tungsten lower dashboard		•	
Gloss black lower dashboard			•
Leather steering wheel		•	
Leather steering wheel with chrome inserts			•
Gloss black painted centre console			•

	VT	Edition	Platinum
<b>STORAGE</b>			
Front seat-back pockets		•	•
Lashing eye in the boot	•	•	•
<b>COMFORT &amp; CONVENIENCE</b>			
Variable power assisted steering	•	•	•
Height and reach adjustable steering wheel		•	•
Scented air freshener			•
12 volt socket in cabin	•	•	•
Driver's and passenger's sunvisor with courtesy mirror	•	• <sup>5</sup>	
Front electric windows	•		
Front electric windows with 'one-touch' operation on driver's side		•	
Front and rear electric windows		o <sup>6</sup>	•
Air conditioning		•	
Automatic air conditioning			•
Front and rear carpet mats			•
Rear parking sensors		•	•
<b>SEATING</b>			
Height-adjustable front seats	•	•	•
Rear split/folding seats	•	•	•
Front armrest			•
<b>IN-CAR ENTERTAINMENT</b>			
RDS radio/MP3 CD player with four speakers, AUX socket and steering mounted controls	•	•	•
7 inch touchscreen with DAB radio, Bluetooth® and USB socket		o	•
Bluetooth® handsfree and media streaming with USB socket		• <sup>7</sup>	• <sup>7</sup>

<sup>3</sup> PureTech 68 manual version only.

<sup>4</sup> Included when optional eMyWay and Hi-Fi system is ordered.

<sup>5</sup> Not available with optional panoramic Zenith windscreen.

<sup>6</sup> Available as part of the 7 inch touchscreen with DAB radio, Bluetooth®, USB socket & eMyWay satellite navigation including 5 years European map updates and reversing camera option.

<sup>7</sup> Mobile phone compatibility can vary by phone manufacturer. Please consult your Dealer for further compatibility information.

# TECHNICAL SPECIFICATION



**83.1 mpg**

on BlueHDi 100 S&S version



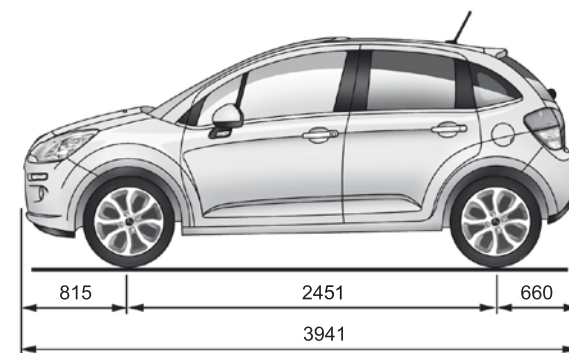
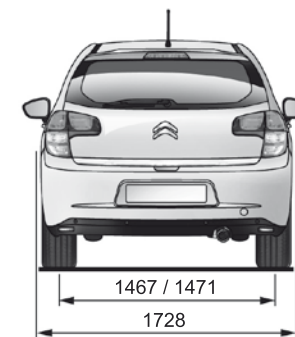
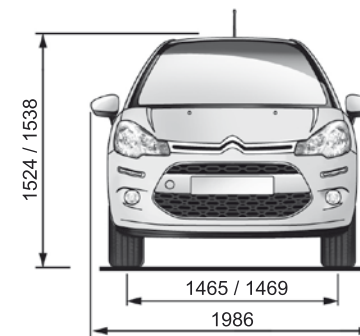
**87g/km CO<sub>2</sub>**

on BlueHDi 100 S&S version

		PETROL ENGINES		
		PureTech 68 manual	PureTech 82 manual	
<b>ENGINE</b>				
Capacity (cc)		999	1199	
Cylinders		3 in line	3 in line	
Max power CEE (kW/rpm)		50/6000	60/5750	
Max torque CEE (Nm/rpm)		95/3000	118/2750	
Fuel system		Multi-point electronic fuel injection		
Euro status		Euro 6	Euro 6	
<b>TRANSMISSION</b>				
Transmission type		Five speed manual	Five speed manual	
Clutch type		Dry single plate	Dry single plate	
<b>PERFORMANCE</b> (All figures driver alone)				
Max speed (mph)		101	108	
0-62mph (secs)		14.2	12.3	
Standing 1000m (secs)		35.7	33.9	
<b>ECONOMY</b> (Official Government test fuel consumption figures) Litres/100km (mpg)		15 inch Airflow Covers	15 inch Parkes Alloy Wheels	
Urban cycle		5.2 (54.3)	5.3 (53.3)	5.6 (50.4)
Extra urban		3.9 (72.4)	4.0 (70.6)	4.1 (68.9)
Combined		4.4 (64.2)	4.5 (62.8)	4.6 (61.4)
<b>CO<sub>2</sub> EMISSIONS</b> (g/km)		102	104	107
Please note: the maximum plated weights must not be exceeded <b>WEIGHTS</b> (kg)				
Mass in service		1115	1140	
Gross Vehicle Weight		1520	1525	
Max towing weight braked/unbraked		775/450	1100/520	
Max roof rack load		70	70	
<b>BRAKES</b>		ABS with EBD and EBA standard on all versions		
		Front discs, rear drums	Front discs, rear drums	
<b>STEERING</b>		Variable power assisted steering		
Number of turns lock to lock		3.1	3.1	
Turning circle between kerbs (m)		10.2	10.2	
<b>SUSPENSION</b>		Pseudo MacPherson strut front with deformable beam rear		
<b>FUEL TANK CAPACITY</b> Litres (gallons)		50 (11)		
<b>EXTERIOR DIMENSIONS</b> (mm)				
Length/Width/Height		3941/1728/1538		
Wheelbase		2451		
<b>BOOT VOLUME &amp; DIMENSIONS</b>				
Seats up – below parcel shelf min/max (litres VDA)		300		

PETROL ENGINES		DIESEL ENGINES	
PureTech 82 S&S ETG	PureTech 110 S&S manual	BlueHDi 75 manual	BlueHDi 100 S&S manual
1199 3 in line 60/5750 118/2750 Multi-point electronic fuel injection Euro 6	1199 3 in line 81/5500 205/1500 Euro 6	1560 4 in line 55/3750 230/1750 High pressure direct diesel injection turbo charged Euro 6	1560 4 in line 73/3750 254/1750 Euro 6
Efficient Tronic Gearbox (ETG) Dry single plate	Five speed manual Dry single plate	Five speed manual Dry single plate	Five speed manual Dry single plate
109 14.4 35.4	118 9.6 31.0	106 11.3 33.0	117 10.8 33.5
5.2 (54.3) 3.9 (72.4) 4.3 (65.7)	5.6 (50.4) 3.9 (72.4) 4.5 (62.8)	4.2 (67.3) 3.0 (94.2) 3.5 (80.7)	3.8 (74.3) 3.2 (88.3) 3.4 (83.1)
99	104	90	87
1165 1541 800/500 70	1225 1598 1150/570 70	1155 1645 1150/570 70	1280 1652 1150/570 70
ABS with EBD and EBA standard on all versions		ABS with EBD and EBA standard on all versions	
Front discs, rear drums	Front discs, rear discs	Front discs, rear drums	Front discs, rear drums
Variable power assisted steering		Variable power assisted steering	
3.1 10.2	3.1 10.2	3.1 10.2	3.1 10.2
Pseudo MacPherson strut front with deformable beam rear		Pseudo MacPherson strut front with deformable beam rear	
50 (11)		50 (11)	
3941/1728/1538 2451		3941/1728/1538 2451	
300		300	

## DIMENSIONS



# CITROËN & YOU

**Finance and Insurance** should reflect you and your needs, just as your chosen car does. Here are the products that aim to do just that.

## CITROËN FINANCIAL SERVICES

### PURCHASE PLAN

Own your vehicle with this flexible package designed to fit your budget.

### ELECT 3

A new Citroën car every two or three years with monthly payments structured to suit your budget.

### ELECT 4

Enjoy the convenience of a new car without the stress and hassle of ownership.

To find out more about Citroën products and services, go to [www.citroen.co.uk](http://www.citroen.co.uk) or contact your Citroën dealer.

## FOR BUSINESS USERS

## CITROËN CONTRACT MOTORING

### HIRE PURCHASE

A tried and tested finance package that allows you to own your vehicle.

### BUSINESS LEASE

An alternative to vehicle ownership that allows you to control your business cash flow and gain tax efficiencies.

### LEASE PURCHASE

Own a vehicle with a finance solution that offers ultimate flexibility to complement your business cash flow.

### CONTRACT HIRE

A non-ownership finance solution that keeps costs fixed and risks low.

For more information on Citroën fleet and business sales, please call Citroën fleet connect on 08457 940 940 or look us up at [www.citroen.co.uk/fleet](http://www.citroen.co.uk/fleet)

## CITROËN INSURANCE

### INSTANT COVER

To help you drive away your new car without delay, we offer Instant Cover insurance, providing you with 7 days comprehensive car insurance, for free!

### MOTOR INSURANCE

Citroën Insurance has been designed specifically for our vehicles. You don't just get repairs you get Citroën expertise, service, quality and parts. So, when the time comes to renew your insurance cover, call Citroën Insurance on 0370 024 2725.

Lines open 8am - 8pm weekdays, 9am - 5pm Saturdays. Alternatively, visit [www.citroen.co.uk](http://www.citroen.co.uk) for more information or to apply online.

Citroën Insurance policies are underwritten by U K Insurance Limited, Registered office: The Wharf, Neville Street, Leeds, LS1 4AZ. Registered in England & Wales No. 1179980. U K Insurance Limited is authorised by the Prudential Regulation Authority and regulated by the Financial Conduct Authority and the Prudential Regulation Authority. Citroën Insurance is a trading style of PSA Finance UK (company registration number: 01024322) having its registered office at Quadrant House, Princess Way, Redhill, Surrey, RH1 1QA.

**Care for your Citroën C3** and it will look after you – like every Citroën it's part of legendary engineering heritage with reliability built in.

With the added reassurance of a warranty, routine servicing and maintenance, as well as 24-hour roadside assistance, you are protected.

## CITROËN WARRANTY

Every new Citroën car has the benefit of a 3 year\* warranty package, plus a 12 year anti-perforation\*\* warranty and a 3 year paint warranty.

\* 2 years' unlimited warranty. No-fee customer option of 1 year's Dealer provided warranty, only on cars sourced from Citroën UK Limited. Note: Dealer provided warranty is limited to 60,000 miles for cars.

\*\* Against all internal to external perforation to bodywork or underbody.

## CITROËN ASSISTANCE

In response to a free telephone call in the UK, Citroën Assistance brings rapid expert roadside assistance to you in an emergency. It comes free of charge for a full year and operates 24 hours a day in all parts of the UK and Europe. Services include nationwide recovery for both car and passengers, a home call service, replacement vehicle, hotel accommodation and vehicle storage if required. Please note, Citroën Assistance only applies to incidents covered by the new vehicle warranty, and excludes non-vehicle faults, such as running out of fuel, mis-fuelling, loss of keys, lock-ins, road traffic accidents and punctures/wheel changes.

Full details are available on request from Citroën UK via [cuk\\_contactcentre@citroen.com](mailto:cuk_contactcentre@citroen.com)

## CITROËN MAINTENANCE

From roadside assistance to replacing wear and tear parts or regular servicing, with Citroën Maintenance you have total peace of mind. For a one-off fee or low monthly payment, our experienced engineers will take care of your Citroën, whatever happens.

To find out more, contact your Citroën Dealer or Citroën Authorised Repairer.

## CITROËN SERVICING

Available up to 1 year from your vehicle's registration date, but before its first chargeable service, a Citroën Servicing Package enables you to pay in advance for your vehicle's servicing needs for 3 years/35,000 miles.

For further information, please contact your Citroën Dealer.

# GLOSSARY

## › BLUEHDi DIESEL ENGINE

Latest generation diesel engine technology from Citroën. BlueHDi complies with Euro 6 emission standards, to deliver exceptional fuel economy and CO<sub>2</sub> emissions and gives a driving experience rich in power and performance.

## › HIGH-PRESSURE DIRECT INJECTION DIESEL ENGINE

Citroën's HDi diesel engines operate with the fuel under extremely high pressure, enabling microscopically precise injection control. With this level of management it's possible to inject at different times during the same engine stroke allowing total control over the combustion process. This has allowed our engineers to reduce carbon monoxide emissions by 40%, unburned hydrocarbons by 50% and engine particulates by 60%. Fuel consumption is 20% lower than a prechamber diesel engine, resulting in an equivalent reduction in CO<sub>2</sub> emissions and thanks to the torque available at low engine speed it could be argued that driveability is now better than in petrol engined cars.

## › ANTI-LOCK BRAKING SYSTEM (ABS)

Computer-controlled braking assistance designed to prevent the wheels from locking under extreme braking. This enables the car to continue being steered and therefore controlled during this braking incident. The Citroën C3's ABS system is further enhanced with EBA and EBD.

## › ELECTRONIC BRAKEFORCE DISTRIBUTION (EBD)

As drivers we find it difficult to instinctively brake very hard, but this is often what is needed in those rare emergency situations. The EBA system recognises our 'attempt' to brake hard and in combination with the ABS and EBD systems instantly applies the maximum stopping power possible.

## › EMERGENCY BRAKING ASSISTANCE (EBA)

As drivers we find it difficult to instinctively brake very hard, but this is often what is needed in those rare emergency situations. The EBA system recognises our 'attempt' to brake hard and in combination with the ABS and EBD systems instantly applies the maximum stopping power possible.

## › ELECTRONIC STABILITY CONTROL (ESC)

This is computer-controlled traction assistance and is provided primarily through the braking systems. The ESC's control unit constantly compares where the driver intends going (through the position of the steering wheel) with where the vehicle is actually going and, if necessary, makes speed corrections to each wheel individually through braking or engine torque to keep the vehicle 'in line'.

## › ON-BOARD TRIP COMPUTER

The Citroën C3's multi-function on-board trip computer provides you with information at your fingertips. At the touch of a button you can view a range of data like fuel consumption, average speed and mileage possible at your current fuel level.

## › EMYWAY SATELLITE NAVIGATION SYSTEM

The eMyWay satellite navigation system features a 7 inch screen and covers UK and Europe. Its in-built memory provides information about speed limits and lets you know which lane to use when reaching complex intersections. The system also lets you adapt your route based on traffic conditions, with data provided by Trafficmaster and ViaMichelin in the UK and France.

## › ISOFIX

A standardised and more simple method for installing child seats, each seat is 'clicked' into place via a three point system. On the Citroën C3, Isofix is installed on the outer rear seats.



# PRICES

(Models produced from 1 February 2016)



TRIM	ENGINE	CO <sub>2</sub> G/KM	V.E.D. 1 <sup>ST</sup> YEAR RATE	INS. GROUP (1-50)	BASIC R.R.P.	V.A.T.	TOTAL R.R.P.	'ON THE ROAD' R.R.P.*	P11D VALUE	B.I.K. TAX RATE
VT	PureTech 68 manual	102	£0.00	8E	£8,670.83	£1,734.17	£10,405.00	<b>£11,135.00</b>	£11,080.00	15%
	BlueHDi 75 manual	90	£0.00	16E	£10,579.17	£2,115.83	£12,695.00	<b>£13,425.00</b>	£13,370.00	16%
Edition	PureTech 68 manual	104	£0.00	7E	£10,104.17	£2,020.83	£12,125.00	<b>£12,855.00</b>	£12,800.00	15%
	PureTech 82 manual	107	£0.00	10E	£10,954.17	£2,190.83	£13,145.00	<b>£13,875.00</b>	£13,820.00	16%
	PureTech 82 S&S ETG	90	£0.00	16E	£12,012.50	£2,402.50	£14,415.00	<b>£15,145.00</b>	£15,090.00	16%
Platinum	PureTech 82 manual	107	£0.00	11E	£11,845.83	£2,369.17	£14,215.00	<b>£14,945.00</b>	£14,890.00	16%
	PureTech 82 S&S ETG	99	£0.00	11E	£12,362.50	£2,472.50	£14,835.00	<b>£15,565.00</b>	£15,510.00	14%
	PureTech 110 S&S manual	104	£0.00	16E	£12,908.33	£2,581.67	£15,490.00	<b>£16,220.00</b>	£16,165.00	15%
	BlueHDi 75 manual	90	£0.00	16E	£12,904.17	£2,580.83	£15,485.00	<b>£16,215.00</b>	£16,160.00	16%
	BlueHDi 100 S&S manual	87	£0.00	19E	£13,666.67	£2,733.33	£16,400.00	<b>£17,130.00</b>	£17,075.00	16%

Insurance groups (1-50) are an indication only, please consult your insurance company for further details.

\* The Manufacturer's 'On The Road' Recommended Retail Price includes the following: Delivery to Dealer and Number Plates £562.50, V.A.T. £112.50, Government First Registration Fee £55 and Graduated Vehicle Excise Duty.

## CRÉATIVE TECHNOLOGIE

[www.citroen.co.uk](http://www.citroen.co.uk) | CITROËN UK Ltd. Pinley House, 2 Sunbeam Way, Coventry CV3 1ND.

CITROËN prefers **TOTAL**



This brochure is made from paper from a well-managed forest. Citroën support responsible use of forest resources. Please don't throw me away, give me to a friend or recycle me.

NOTE: Images and specification descriptions are dependent on trim level and options specified. Every endeavour has been made to ensure that the information and details contained in this brochure were accurate at the time of going to press February 2016. However the company reserves the right, whilst preserving the essential characteristics of the models described, to introduce at any time modifications, changes of details, equipment or accessories. Every effort will be made to bring this brochure up to date, but in order to avoid any misunderstandings please consult your Dealer. For full details of Citroën Care for Car and Driver, please see the full manufacturer's price list. The Citroën Website contains full information on all Citroën products and offers available in the UK, together with details of our environmental and recycling policies. The site address is: [www.citroen.co.uk](http://www.citroen.co.uk) or you can contact Citroën directly via [cuk\\_contactcentre@citroen.com](mailto:cuk_contactcentre@citroen.com)