

# Ford

GALAXY



**VISIONARY. INGENUOUS. REMARKABLE.  
EVERY CAR BEARS HIS SIGNATURE.**

*Henry Ford*



**Galaxy Titanium**

*with 19" 5x2-spoke Luster Nickel alloy wheels (option) and Blue Panther metallic body colour (option).*



**Galaxy Titanium**

*with 19" 5x2-spoke Luster Nickel alloy wheels (option) and Magnetic metallic body colour (option).*

**CONTENTS**

Introduction .....	2	Body colours .....	26
Interior comfort .....	4	Wheels .....	27
Adaptive Cruise Control .....	6	Interior trims .....	28
Panorama roof .....	8	Options and packs .....	29
Audio and connectivity .....	10	Accessories .....	30
Features and technologies .....	12	Dimensions .....	32
Models overview .....	20		
Zetec .....	22		
Titanium .....	24		





## *Travel in first class*

### A great place to be

With its advanced technology and premium design, the Ford Galaxy combines excellent driving quality with the highest levels of space, comfort and innovation. Simply put, it's a great place to be.



360°

*Galaxy Titanium with 19" 5x2-spoke alloy wheels (option) and Chrome Blue metallic body colour (option).*



## *A luxurious experience in space and comfort*

Designed around the needs of each of its occupants, Galaxy is spacious, refined, and technologically advanced offering luxurious travel for up to seven passengers.

*Galaxy Titanium shown in Blue Panther body colour (option) with Salerno leather in Ebony seat trim (optional as part of Titanium Lux Pack).*







## *Always looking out for you*

### **Adaptive Cruise Control with Stop & Go\***

Adaptive Cruise Control uses sensors to maintain your chosen speed when it's safe to do so, and when the vehicle in front of you slows, it helps keep you a suitable distance away.

The Stop & Go feature goes a step further. Ideal for city driving, it slows your vehicle to a complete stop when the vehicle in front of you stops. And, when the traffic begins to move again, you'll automatically pull away too.

\*Adaptive Cruise Control is available as an option (part of Driver Assistance Pack) (Stop & Go feature is included for models with automatic transmission only).

*Galaxy Titanium with 19" 5x2-spoke alloy wheels (option) and Magnetic metallic body colour (option).*



## *Panorama roof*

### Bring the outside in

Enjoy the beauty of the outdoors from the comfort of your Ford Galaxy. A full-length glass panorama roof lets the sunshine in and offers plenty of fresh air too, thanks to its electrically-operated sliding action. A solar reflect coating and powered sunblind provide shade and privacy when required. The feeling of comfort offered by the Ford Galaxy Panorama roof is further extended by the addition of an infra-red front windshield and rear manual sunblinds (option).

*Galaxy Titanium shown with Salerno leather in Ebony seat trim (option).*





## Meet your phone's new best friend

### Ford SYNC 3

Ford SYNC 3 integrates seamlessly with your compatible smartphone, letting you control everything from phone calls and text messaging to music and satellite navigation – all via the 8" touchscreen or through remarkably simple voice commands. Map updates help to keep you on track and on time, and are complimentary for a limited period following vehicle registration.

### SYNC 3 features

- Manage your phone, music, apps and navigation with simple voice commands
- Hear your text messages read aloud for you
- Control SYNC-compatible apps with AppLink, while Apple CarPlay and Android Auto let you navigate your smartphone through the SYNC 3 home screen, as if it were your handset
- Colour touchscreen supports multi-touch 'swipe' and 'pinch-to-zoom'

gestures, and lets you arrange application icons and background displays just as you would on your tablet or smartphone

Access additional features via your smartphone with the **FordPass App**.

- Select points of interest along your route. FordPass will send these locations to your SYNC 3 Navigation when you connect through AppLink
- Search for refuelling points by brand or fuel grade, and compare pricing
- Search available parking spaces, check costs, opening hours and ratings

**Note:** Full SYNC 3 smartphone integration only available with iPhone 5/Android 5.0 (Lollipop) or higher. Some SYNC 3 functions require a data connection, so mobile data charges will apply. To check whether Apple CarPlay and Android Auto are available in your market, please check official Apple CarPlay and Android Auto websites for the latest information.

## Effortless connectivity

Now you and your Ford can stay seamlessly connected wherever you are. That's because the FordPass Connect modem and the FordPass App, together, unlock a range of features designed to make every journey easier.



### FordPass Connect

FordPass Connect\* can help save you both time and hassle, as well as give you peace of mind. It is provided as a two year free trial (from date of first registration). After this, subscription fees are payable.

- Live Traffic\*\* provides near real time traffic information and offers dynamic routing based on traffic conditions (2 year free trial)
- Local Hazard Information\*\* uses multiple local and national information sources to warn you of hazards in the road ahead
- On-board Wi-Fi\*\*\* allows you to connect up to 10 devices via Wi-Fi to the built-in 4G modem with FordPass Connect (three month free trial)
- eCall† helps occupants place an emergency call to provide emergency services with the vehicle location in their respective language



### FordPass App

FordPass Connect becomes even more powerful when paired with your smartphone via the FordPass App, allowing you to access a host of features.

- Remote lock and unlock your vehicle from anywhere via the app
- Use remote start to pre-condition your vehicle to its preset temperature (automatic transmission only)
- Check your vehicle's fuel level, oil health and tyre pressures straight from your phone
- Get service reminders and book your service direct from the app
- Find where you parked your car and be guided back with built-in maps
- Receive Vehicle Health Alerts directly to your phone
- Get access to exclusive customer offers

\*FordPass Connect is an optional extra. The on-board modem will be connected at the time of vehicle delivery. You may choose to opt in/out of certain data sharing. The technology will be made available in selected markets in 2019, with the remaining markets following through 2020. FordPass Connect feature usage is complimentary for the first 2 years, thereafter a subscription fee is payable.  
 \*\*Access is complimentary for the first 2 years following the registration of a new Ford featuring SYNC 3 with navigation; thereafter a licence fee is payable.  
 \*\*\*Wi-Fi hotspot (up to 4G LTE) includes a complimentary wireless data trial that begins when customers activate the trial with Vodafone, and expires at the end of 3 months or when 3GB of data is used, whichever comes first. Afterwards data bundles can be purchased from Vodafone, refer to their website for details of their data packages. To take advantage of the built-in Wi-Fi hotspot capability, a 2019 Ford vehicle must come with the appropriate hardware, and a data plan is required. Data coverage and service is not available everywhere and terms of your data plan, including applicable message and data rates, may apply.  
 †Ford eCall is an innovative feature that helps vehicle occupants initiate a call to the local Communications Centre, following a vehicle crash event involving an airbag deployment or fuel pump shut off. The feature operates in more than 40 European countries and regions.





## Forward thinking

Ford Galaxy features a range of technologies designed to help make every drive easier.

- 01 Adaptive Lighting with Dynamic LED headlights** detects different road conditions and selects the appropriate beam pattern. Dynamic curve lights throw the beam inside the curve to let you see further and sooner. The headlights incorporate daytime running lights, with three LED strips that also function as turn indicators, flashing sequentially towards the direction of turn (part of optional Titanium Lux pack).
- 02 Glare-free high beam** lets you drive on high beam without dazzling other road users. Sensors identify traffic ahead of your car and adjust the high beam pattern to protect other road users from glare, while illuminating the remainder of the road for greater visibility (part of optional Titanium Lux Pack).
- 03 Active Park Assist®** can help you to parallel park or perpendicular park. Once activated, the enhanced system can help you to locate a suitable space as you drive past and will automatically guide you in, while you operate the pedals (following on-screen and audible signals). Park-Out Assist can help you manoeuvre out of a parallel parking space in a similar way (part of optional Driver Assistance Pack).

®Uses sensors.







## Added reassurance

Driving in busy city traffic can be challenging, but Ford Galaxy gives you a clearer view of what's around you and is quick to alert you should you need to take action.

**01 Pre-Collision Assist with pedestrian and cyclist detection<sup>0</sup>** uses radar and a camera to keep a watchful eye on the road ahead for cars, cyclists, and pedestrians. The system is designed to alert you to a potential collision and, if you fail to respond, can automatically apply the brakes to help avoid or reduce the effect of any impact (standard).

**02 Front wide-view camera** provides an extensive view from the very front of your car to the left and right-hand sides. Particularly useful at junctions and when driving forward out of parking spaces where your side view is impaired (part of optional Driver Assistance Pack).

**03 Blind Spot Information System with Cross Traffic Alert and Variable Rear Range<sup>01</sup>** If another vehicle – a car, van or lorry – enters your blind spot, the system is designed to alert you with a warning light built into the corresponding door mirror. The blind spot detection zone will vary up to a range of 18 metres, depending on the speed of the vehicle (part of optional Driver Assistance Pack).



<sup>0</sup>Uses sensors.  
<sup>01</sup>Designed to operate at speeds above 10 km/h.



## Confidence and comfort

However long your journey, and whatever the road conditions, Ford Galaxy helps you stay comfortable and in control.

- 01 Ergonomic seats with AGR certification\*** help support your back. These ergonomically designed, 18-way manually-adjustable front seats with AGR accreditation are ideal for longer journeys (option).
- 02 Ford Clearview Front Wiper System** improves visibility by delivering the washer fluid directly into the path of each wiper blade as it moves across the windscreen (standard).
- 03 Intelligent All-Wheel Drive** continually monitors where power is needed, and can automatically apply the required torque to each wheel for added confidence, whatever the road conditions (available on 2.0 Ecoblue 190PS only).

\*The AGR quality cachet (Aktion Gesunder Rücken = Campaign for Healthier Backs): Certified and recommended by Association Forum Healthy Back – Better Living and Federal Association of German Back Schools. More information: AGR e.V., Stader Str. 6, D – 27432 Bremervörde, Germany. Phone + 49 4761/92 63 580.





## FORD GALAXY



### Hands-free tailgate

Opening or closing Galaxy's tailgate is easy, even when your hands are full. With the keys in your pocket or bag, simply use a gentle kicking motion under the centre of the rear bumper and the tailgate will operate without you having to touch a thing (part of optional Titanium Lux Pack).

### Ford Fold Flat System

With the luxury of seven full-size seats, space is generous in the Ford Galaxy. The innovative Easy Fold system lets you fold each second row seat flat at the touch of a button. While for the ultimate convenience, the Easy Fold with Power Raise feature helps to speed up the loading of large items by lowering and raising the third-row seating at the touch of a button (standard).



### Ford MyKey

This innovative feature lets you tailor and limit car settings – like top speed and audio volume – to suit individual users (standard).

<sup>0</sup>Uses sensors.  
<sup>1</sup>Safety feature.

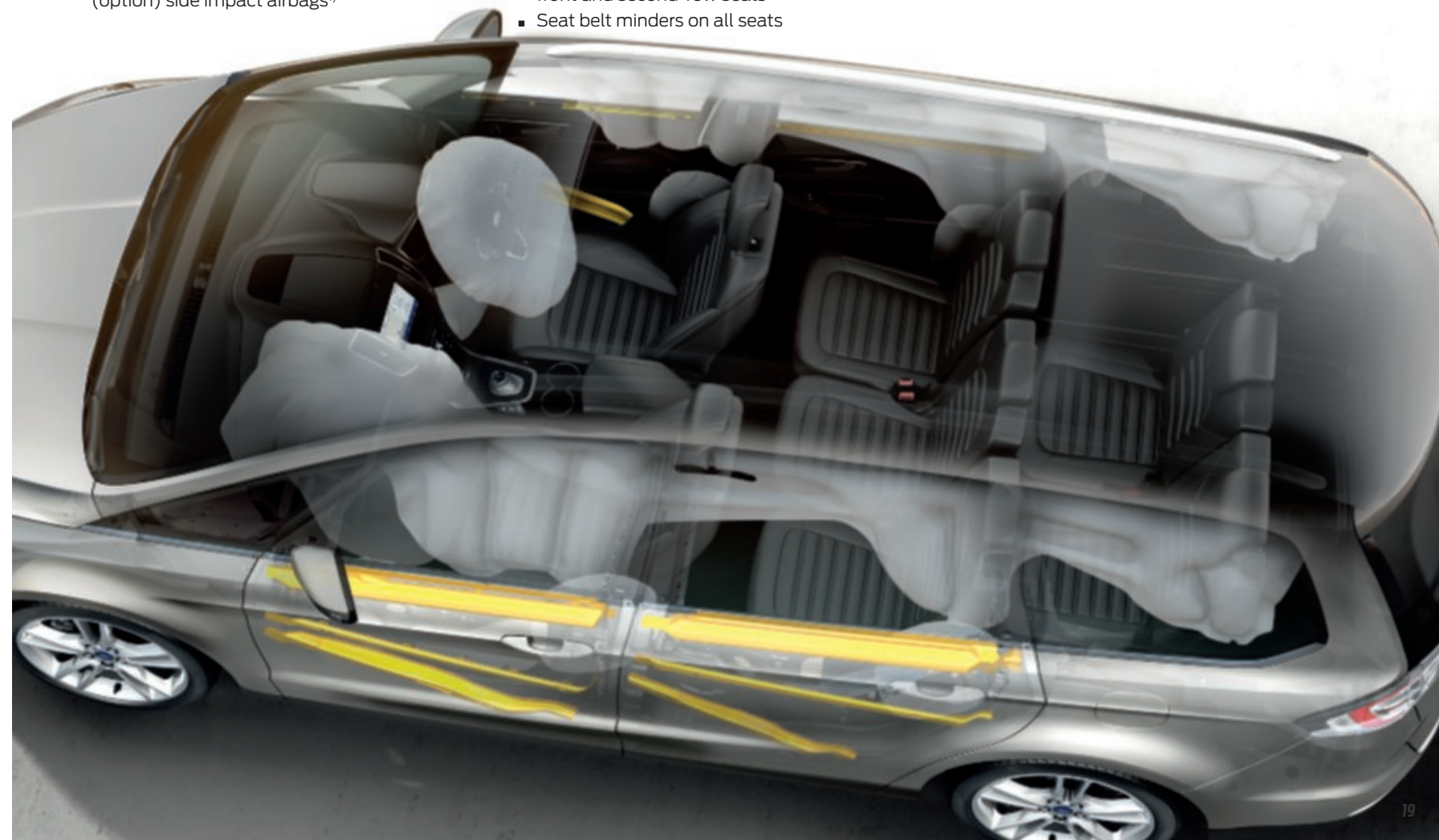
\*Includes front passenger's airbag deactivation switch.  
**\*Note: A rear-facing child seat should never be placed in the front passenger seat when the Ford vehicle is equipped with an operational front passenger's airbag. The safest place for children is properly restrained on the second-row seats.**

### Intelligent Protection System (IPS)<sup>01)</sup>

Ford Galaxy's advanced Intelligent Protection System (IPS)<sup>1)</sup> uses a range of sophisticated technologies that are designed to help keep you protected, including, Electronic Stability Control (ESC) and front and curtain airbags<sup>1)</sup>.

#### Further standard features include:

- Driver's and front passenger's<sup>0</sup> airbags\*<sup>1)</sup>
- Driver's, front passenger's and second row (option) side impact airbags<sup>1)</sup>
- Driver's knee airbag<sup>1)</sup>
- Side curtain airbags for front and rear seats<sup>1)</sup>
- Seat belt pre-tensioners and load-limiters on front and second-row seats
- Seat belt minders on all seats





## *Choose the right Galaxy for you*

Available in two uniquely individual series, whatever your preference there is a new Ford Galaxy that's right for you. To make your purchase choice even more rewarding, we've elevated the standard of our features across all series. So now, whichever Galaxy route you decide to take, you can be sure of a high level of standard features, as well as a host of add-on features available as standalone options or part of an option pack.

**Zetec**



An elegant and sophisticated design, impressive integrated technologies and a first-class travelling experience all contribute to the Ford Galaxy Zetec's outstanding appeal.

**Titanium**



### **Luxury**

Galaxy's luxury models deliver elevated levels of sophistication and comfort, with rich standard specification, premium materials, additional technologies and unique styling elements.



## FORD GALAXY Models

### Zetec

#### Key exterior features

- 17" 10-spoke alloy wheels
- Front halogen fog lights
- Electrically-operated, power-foldable and heated door mirrors with body colour housings, side indicators and puddle lights
- Automatic wipers
- Ford Clearview Front Wiper System
- Headlight courtesy delay
- Black roof rails

#### Key interior features

- Ford SYNC 3 DAB Radio/CD Audio System, 8" colour touchscreen, 8 speakers, voice control & ApLink Android Auto/Apple Carplay, 2 USB ports, eCall and FordPass Connect (embedded modem)\*
- Ford Power starter button
- Front and rear parking sensors
- Floor mats
- Cruise control
- Pre-collision Assist with pedestrian and cyclist detection
- Dual-zone Electronic Automatic Temperature Control
- 4.2" colour TFT cluster display
- Traffic Sign Recognition
- Sport seats
- ISOFIX attachments for each second row seat

#### Engines

##### Diesel

2.0L Ford EcoBlue 150 PS (110 kW)

#### Transmissions

6 speed manual

8 speed automatic



Ford SYNC 3 with 8" touchscreen and voice control (Standard)



Cruise control (includes Speed Limiter and Intelligent Speed Assist) (Standard)



\*FordPass Connect features and Live Traffic are complimentary for 2 years following registration of the vehicle, thereafter a subscription is payable. Wi-Fi hotspot includes complimentary wireless data trial that begins at time of activation and expires at the end of 3 months or when 3GB of data is used, whichever comes first. Afterwards a subscription to Vodafone is required.



## FORD GALAXY Models

# Titanium

### Key exterior features additional to Zetec

- 17" 5x2-spoke alloy wheels
- LED daytime running lights
- Chrome-finish on upper doorline
- Silver roof rails
- Rear privacy glass
- Automatic front headlights

### Key interior features additional to Zetec

- Ford DAB Navigation System
- Lane-Keeping Aid with Lane Departure Warning
- Traffic Sign Recognition
- Interior ambient lighting
- Third-row rear seats with power fold-flat, slide and recline, and manual easy entry to the third row
- 230 V power outlet
- Ford KeyFree System with Ford Power starter button
- 10.1" colour TFT cluster display
- Rain sensing wipers

### Engines

#### Diesel

- 2.0L Ford EcoBlue 150 PS (110 kW)
- 2.0L Ford EcoBlue 190 PS (140 kW)

### Transmissions

- 6 speed manual
- 8 speed automatic
- 8 speed automatic All-Wheel Drive (AWD)\*

\*Available with 2.0L Ecoblue 190PS only.



**Chrome window surround**  
(Standard)



**10.1" colour cluster display**  
(Standard)



360°



## FORD GALAXY Body colours



**Blazer Blue**  
Solid body colour



**Blue Panther**  
Metallic body colour (option on Titanium only)\*



**Moondust Silver**  
Metallic body colour\*



**Lucid Red**<sup>o</sup>  
Exclusive body colour\*



**Frozen White**  
Solid body colour\*



**Chrome Blue**  
Metallic body colour\*



**Shadow Black**<sup>o</sup>  
Metallic body colour\*



**Ruby Red**<sup>o</sup>  
Exclusive body colour\*



**Agate Black**<sup>o</sup>  
Metallic body colour\*



**Magnetic**  
Metallic body colour\*



**Star White**<sup>†</sup>  
Exclusive body colour\*

\*Metallic and exclusive body colours at extra cost.

<sup>†</sup>Available from mid 2020.

<sup>o</sup>Available until end 2019 (Ruby Red and Shadow Black will be replaced by Lucid Red and Absolute Black).

The Ford Galaxy is covered by the Ford Perforation Warranty for 12 years from the date of first registration. Subject to terms and conditions.

**Note** The car images used are to illustrate body colours only and may not reflect current specification or product availability in certain markets. Colours and trims reproduced within this brochure may vary from the actual colours, due to limitations of the printing processes used.

## FORD GALAXY



**17"**  
**10-spoke Sparkle Silver finish alloy wheel**  
Standard on Trend  
(Fitted with 235/55 R17 tyres)



**17"**  
**5x2-spoke Sparkle Silver finish alloy wheel**  
Standard on Titanium  
(Fitted with 235/55 R17 tyres)



**19"**  
**5x2-spoke Luster Nickel finish alloy wheel**  
Option on Titanium  
(Fitted with 245/45 R19 tyres)

**Note** The 19" wheels available on Ford Galaxy are designed to deliver even more sporting driving characteristics and a firmer ride quality compared to the other alloy wheels.

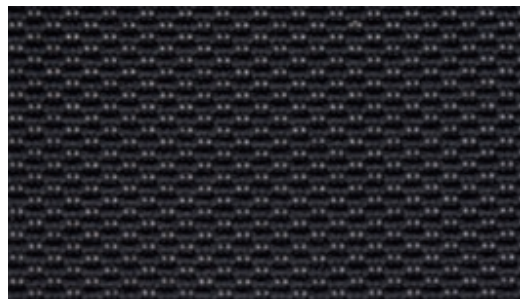
**Note** All alloy wheels are also available as accessories through your local Ford Dealer at extra cost.



## FORD GALAXY Trims

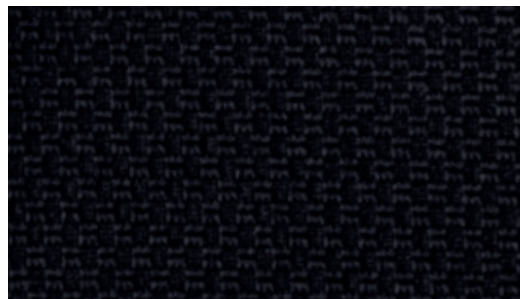
### Made to measure

Inside the Ford Galaxy you'll experience a place of harmony and control. Unexpected premium features like Ergonomic seats with AGR certification\* help support your back with their 18-way manual adjustment on the driver and front passenger seats.



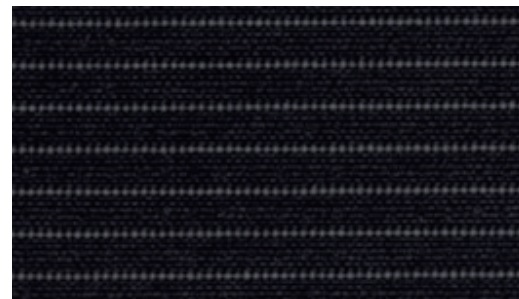
#### Calder in Ebony

Option on Zetec and Titanium (with Ergonomic seats only)



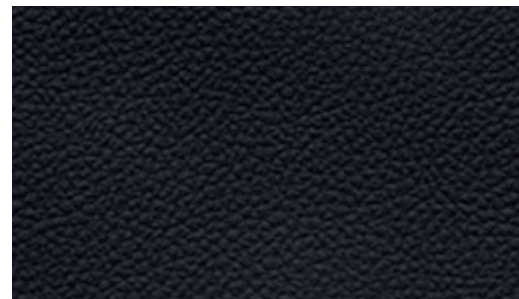
#### Axis in Ebony

Standard on Titanium



#### Solitude in Ebony

Standard on Zetec



#### Salerno leather in Ebony

Optional on Titanium (part of optional Titanium Lux Pack)

## FORD GALAXY Options and Packs

To make Ford Galaxy even more appealing, the most relevant features offered across the range now come as standard, and the special pack line-up has been refreshed. Some options can also be ordered individually, helping you to configure your perfect Galaxy. Please speak to your Ford Dealer for more information about the options available.

#### Driver Assistance Pack

Adaptive Cruise Control\*  
Active Park Assist with parallel and perpendicular parking  
Park out assist (parallel only)  
Front-view camera  
Rear-view camera  
Blind Spot Information System (BLIS)  
Ford Premium SYNC 3 Sony Nav System with 12 speakers

#### Titanium Lux Pack

Adaptive LED Headlamps  
Leather seats  
Variable heated front seats  
8-way power front seats  
Power tailgate

#### Winter Pack

Heated seats  
Heated steering wheel

### Zetec



#### Single options

Rear privacy glass  
Detachable tow bar  
Tow bar pre-equipment  
Self-Leveling Suspension\*\*  
Ergonomic seats - 18-way  
Ford SYNC 3 DAB Navigation System

### Titanium



#### Single options

19" 5x2-spoke alloy wheel  
Detachable tow bar  
Tow bar pre-equipment  
Self-Leveling Suspension\*\*  
Rear Seat Air Conditioning  
Ergonomic seats - 18-way  
Ford Premium SYNC 3 Sony Nav System  
Panorama roof with rear sunblinds

#### Driver Assistance Pack

#### Titanium Lux Pack

#### Winter Pack

\*The AGR quality cachet (Aktion Gesunder Rücken = Campaign for Healthier Backs): Certified and recommended by Association Forum Healthy Back – Better Living and Federal Association of German Back Schools. More information: AGR e.V., Stader Str. 6, D – 27432 Bremervörde, Germany. Phone + 49 4761/92 63 580.

\*Stop&Go feature is available for automatic transmission only  
\*\*Self-Leveling Suspension is not available with All Wheel Drive (AWD)



## FORD GALAXY Accessories



### Tow bars

Ford's fully power-operated retractable tow bar automatically stows itself out of sight below the rear bumper when not in use, retaining the model's sleek looks (Option and Accessory\*). Also available as a detachable tow bar (Option and Accessory\*) and a fixed tow bar (Accessory).



### Cross bars

Sturdy and lockable cross bars (only to be used with roof rails) allow you to transport loads easily and work with a selection of roof attachments. (Accessory)



### Load retention systems

Robust retention systems meeting European ISO27955 safety requirements keep items of luggage safely in the load compartment. A net can be ordered for fitment behind the second row of seats, while a guard is available for fitment behind either first or second row. (Accessory\*). Not available in conjunction with optional Tri-zone Electronic Automatic Temperature Control or panorama roof.

### Uebler<sup>+</sup> rear bike carrier

High-quality tow bar-mounted bike carrier with optional practical tilting mechanism (depending on bike carrier model), for easy access to the load compartment. (Accessory)

### Load floor net

Elasticated net attaches to tie-down hooks in the load compartment. Helps to secure smaller items and belongings. (Accessory)

### Load compartment mat

Mat provides load compartment protection. Reversible design offers choice of carpet with Galaxy logo, or durable rubber surface ideal for carrying wet or dirty items. Mat can be extended over rear seats and offers fold-out rear bumper protection. (Accessory)

### Rubber floor mats

The tray-style all-weather rubberised floor mats with Galaxy nameplate are tailor-made and help to protect against dirt and damp. The driver's mat is securely fixed directly onto the vehicle's floor to help prevent it from slipping. (Accessory)

### Mud flaps

Contoured mud flaps help to protect the bodywork of your Ford Galaxy from stone chips and road spray. Available as sets for front and rear. (Accessory)



Items ordered as an option will be fitted in the factory. If ordered as an accessory items will be fitted at the dealership. Fitment of accessories may have an impact on your vehicle's fuel consumption  
\*Item covered by third party supplier's warranty, please see inside back cover for details.



Further information on our full range of available accessories can be found here



For more information about accessories please visit the Ford online shop at [www.ford-accessories.co.uk](http://www.ford-accessories.co.uk)

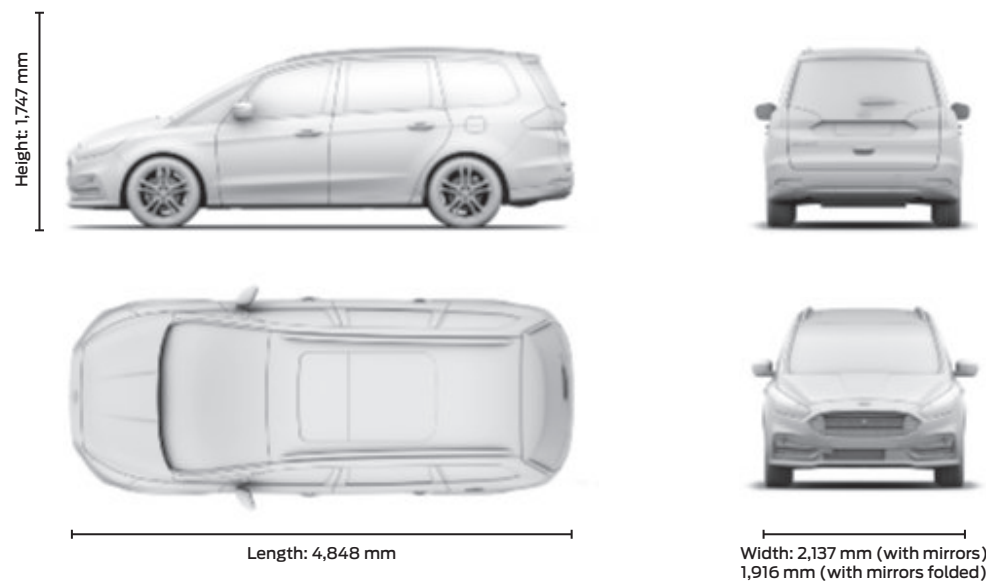
For a range of Ford branded merchandise – from clothing to lifestyle products and travel utensils – visit [www.fordlifestylecollection.com](http://www.fordlifestylecollection.com)



## Dimensions

Exterior (mm)	
Overall length with/without tow bar	4848
Overall width with/without mirrors	2137/1916
Overall width with folded mirrors	1953
Overall height (unladen)	1747
Turning circle – kerb-to-kerb (m)	11.65*
Luggage capacity (litres)†	
7-seat mode (laden to top of seat) (min./max.)	300
5-seat mode (laden to roof) (nominal/max.)	1206/1301
2-seat mode (laden to roof)	2339
Fuel tank capacity (litres)	
Petrol	68.0
Diesel	68.1**
AdBlue tank	11.52

†Measured in accordance with ISO 3832. Dimensions may vary dependent on the model and equipment fitted. \*11.95m with 19" wheels, \*\*64.4 on 4x4 variants.



WWW



Want to see the full specifications?

To view the full features and specifications of this vehicle, download the digital ebrochure or view the interactive brochure at <https://www.ford.co.uk/shop/research/brochure-download> or scan the QR code.

## Fuel, performance and emissions

Available on	2.0L Ford EcoBlue diesel (with Auto Start-Stop)	2.0L Ford EcoBlue diesel (with Auto Start-Stop)	2.0L Ford EcoBlue diesel (with Auto Start-Stop)	2.0L Ford EcoBlue diesel (with Auto Start-Stop)
<b>5-door</b>	Zetec, Titanium	Zetec, Titanium	Titanium	Titanium
Emission standard	Euro 6d Temp	Euro 6d Temp	Euro 6d Temp	Euro 6d Temp
Fuel type	Diesel	Diesel	Diesel	Diesel
Maximum Power PS (kW)	150 (110)	150 (110)	190 (140)	190 (140)
Torque Nm	350	350	400	400
<b>CO<sub>2</sub> emissions (NEDC equivalent)<sup>®</sup></b>				
17", 18" and 19" Wheel	132	138	134	156
Transmission	6-speed manual	8-speed automatic	8-speed automatic	8-speed automatic
Drive	4x2	4x2	4x2	4x4
<b>Combined Fuel Consumption<sup>®</sup> (WLTP figures with Options)</b>				
Lower Performing MPG (L/100km) combined	45.6 (6.2)	43.5 (6.5)	43.5 (6.5)	40.4 (7.0)
Highest Performing MPG (L/100km) combined	46.3 (6.1)	43.5 (6.5)	43.5 (6.5)	40.4 (7.0)
<b>Performance<sup>®</sup></b>				
Max. speed (mph)	123	122	129	128
0-62 mph (secs)	10.9	10.9	9.6	10.6
31-62 mph* (secs)	10.9	n/a	n/a	n/a
<b>Weights and loads</b>				
Kerbweight (kg) <sup>‡</sup>	1924	1935	1935	2019
Gross vehicle mass (kg)	2595	2605	2605	2675
Gross train mass (kg)	4395	4465	4605	4675
Max. Towable Mass (braked) (12%*) (kg)	1800	1800	2000	2000
Max. Towable Mass (braked) (8%*) (kg)	2000	2000	2000	2000
Max. Towable Mass (unbraked) (kg)	750	750	750	750

The test used to establish fuel consumption and CO<sub>2</sub> figures has changed to deliver results that are more representative of real life driving. The Worldwide Harmonised Light Vehicle Test Procedure (WLTP) has replaced the old NEDC test. The Fuel Consumption figures shown are derived from the new WLTP test. However, until 6th April 2020, the published CO<sub>2</sub> figures will be the NEDC equivalent and this will be used to calculate Vehicle Excise Duty.

The table below shows the fuel consumption (WLTP) figures for each available engine on the Ford S-MAX. These figures may not reflect real life driving results, which will depend upon a number of factors including the accessories fitted, variations in weather, driving styles and vehicle load.

The figures shown are for comparability purposes; only compare fuel consumption and CO<sub>2</sub> figures with other vehicles tested to the same technical procedures.

\*In 4th gear, †Ford test figures.  
 \*\*The declared fuel/energy consumptions, CO<sub>2</sub> emissions and electric ranges are determined according to the technical requirements and specifications of the European Regulations (EC) 715/2007 and (EU) 2017/1151 as last amended. Light Duty vehicles type-approved using the Worldwide Harmonised Light Vehicle Test Procedure (WLTP) will have fuel/energy consumptions and CO<sub>2</sub> emission information for New European Drive Cycle (NEDC) and WLTP. WLTP will fully replace the NEDC latest by end of the year 2020. The applied standard test procedures enable comparison between different vehicle types and different manufacturers. In addition to the fuel efficiency of a vehicle, driving behaviour as well as other non-technical factors play a role in determining a vehicle's fuel/energy consumption, CO<sub>2</sub> emissions and electric ranges. CO<sub>2</sub> is the main greenhouse gas responsible for global warming. A guide on fuel economy and CO<sub>2</sub> emissions which contains data for all new passenger carrying vehicle models is available at any point of sale free of charge or can be downloaded under <http://carfueldata.dft.gov.uk>.  
 ‡Represents the lightest kerbweight assuming driver at 75 kg, full fluid levels and 90% fuel levels, subject to manufacturing tolerances and options, etc., fitted. Towing limits quoted represent the maximum towing ability of the vehicle at its Gross Vehicle Mass to restart on a 12 per cent gradient at sea level. The performance and economy of all models will be reduced when used for towing. Gross Train Mass includes trailer weight.  
 \*Gradient at sea level.



## Colour and trim

	Standard body colours		Premium body colours*				Exclusive body colours*	
	Blazer Blue	Frozen White	Blue Panther	Chrome Blue	Shadow Black**	Moondust Silver	Ruby Red**	Magnetic
<b>Zetec</b>								
Solitude in Ebony Cloth Seats	Available	Available		Available	Available	Available	Available	Available
Calder in Ebony with Ergo Seat	Available as an option	Available as an option		Available as an option	Available as an option	Available as an option	Available as an option	Available as an option
<b>Titanium</b>								
Axis in Ebony Cloth Seats	Available	Available	Available	Available	Available	Available	Available	Available
Axis in Ebony with Ergo Seat	Available as an option	Available as an option	Available as an option	Available as an option	Available as an option	Available as an option	Available as an option	Available as an option
Salerno Leather in Ebony (part of optional Titanium Lux Pack)	Available as part of a pack	Available as part of a pack	Available as part of a pack	Available as part of a pack	Available as part of a pack	Available as part of a pack	Available as part of a pack	Available as part of a pack

Available

Available as an option

Available as part of a pack

\*Metallic and premium metallic paints, full leather trim and Ergo seat are optional, at extra cost. \*\*Agate Black and Lucid Red Available from January 2020. replacing Shadow Black and Ruby Red deleted at January 2020.

## Styling and appearance

	Zetec	Titanium
<b>Wheels</b>		
Alloy – 17", 10-spoke, Sparkle Silver finish (fitted with 235/55 tyres)* with blue centre caps	Available	Available
Alloy – 17", 5x2-spoke, Pearl Grey finish (fitted with 235/55 tyres)* with blue centre caps	Available	Option at extra cost
Alloy – 19", 5x2-spoke, Luster Nickel finish (fitted with 245/45 tyres)* with blue centre caps	Available	Option at extra cost
Instant mobility system	Available	Available
Locking wheel nuts	Available	Available
<b>Design features</b>		
Black finish on upper doorline	Available	Available
Chrome finish on upper doorline	Available	Option at extra cost
Door mirrors – Power-operated, heated and power-foldable with body colour housings, side indicators and puddle lights	Available	Available
Door mirrors – Power-operated, heated and power-foldable with body colour housings, side indicators, puddle lights and memory	Available	Available as part of a pack
Door handles – Body colour	Available	Available
Exhaust – Dual	Available	Available
Front bumper – Painted body colour upper, painted body colour lower	Available	Available
Front fog lights - halogen	Available	Available
Front fog lights – LED	Available	Available
Fog light bezel – Carbon Black (high gloss) bezel with Bright Chrome surround	Available	Available
Fog light bezel – Carbon Black (high gloss) bezel (Vignale style) with Bright Chrome surround	Available	Option at extra cost
Front lower grille – High Gloss and Matt Carbon Black	Available	Available
Front lower grille – High Gloss and Matt Carbon Black	Available	Available
Front upper grille – High Gloss and Matt Carbon Black chrome finish horizontal bars and surround	Available	Available
Active grille shutter (not available with 240 PS 2.0L Ford EcoBlue diesel)	Available	Available
Roof rails – Black finish	Available	Available
Roof rails – Silver finish	Available	Option at extra cost
Power-operated tailgate (as part of Titanium Lux Pack)	Available	Available as part of a pack
Rear bumper anti-scratch pad – Self colour	Available	Available
Rocker panel mouldings – Self colour	Available	Available

Standard

Option at extra cost

Part of an option pack at extra cost

Note: the 19" wheels available on Ford Galaxy are designed to deliver more sporting driving characteristics and a firmer ride quality compared to standard 17" and 18" wheels.



## Styling and appearance

	Zetec	Titanium
Rear privacy glass	<input type="checkbox"/>	<input checked="" type="checkbox"/>
Tinted glass	<input checked="" type="checkbox"/>	<input checked="" type="checkbox"/>
Retractable tow bar with electric release button in load compartment (including 13-pin electrical kit, permanent power supply, Trailer Sway Control and Hill Start Assist) (not available with self-levelling suspension) (not available with 8-speed automatic transmission with 4WD)	<input type="checkbox"/>	<input type="checkbox"/>
Removable (detachable) tow bar	<input type="checkbox"/>	<input type="checkbox"/>
Scuff plates – Bright finish front door	<input checked="" type="checkbox"/>	<input checked="" type="checkbox"/>
<b>Paint</b>		
Paint – Solid	<input checked="" type="checkbox"/>	<input checked="" type="checkbox"/>
Paint – Metallic	<input type="checkbox"/>	<input type="checkbox"/>

## Driving experience

	Zetec	Titanium
<b>Driver assistance</b>		
Cruise control – Includes Speed Limiter and Intelligent Speed Assist	<input checked="" type="checkbox"/>	<input checked="" type="checkbox"/>
Adaptive Cruise Control (with Stop& Go for automatic transmission only - with optional Driver Assistance Pack)	<input checked="" type="checkbox"/>	<input checked="" type="checkbox"/>
Pre-Collision Assist with pedestrian and cyclist detection	<input checked="" type="checkbox"/>	<input checked="" type="checkbox"/>
Blind Spot Information System with Cross Traffic Alert (part of optional Driver Assistance Pack)	<input checked="" type="checkbox"/>	<input checked="" type="checkbox"/>
Lane-Keeping System (including Lane-Keeping Aid, Lane-Keeping Alert, auto high beam, Driver Alert and autowipers)	<input checked="" type="checkbox"/>	<input checked="" type="checkbox"/>
Active Park Assist (enhanced) – Including perpendicular park assist and Park-Out assist (part of optional Driver Assistance Pack)	<input checked="" type="checkbox"/>	<input checked="" type="checkbox"/>
Front video camera with split-view (includes rear-view camera)(part of optional Driver Assistance Pack)	<input checked="" type="checkbox"/>	<input checked="" type="checkbox"/>
Rear-view camera (part of optional Driver Assistance Pack)	<input checked="" type="checkbox"/>	<input checked="" type="checkbox"/>
Parking distance sensors – Front and rear	<input checked="" type="checkbox"/>	<input checked="" type="checkbox"/>
Traffic Sign Recognition	<input checked="" type="checkbox"/>	<input checked="" type="checkbox"/>
Electric power-assisted steering (EPAS)	<input checked="" type="checkbox"/>	<input checked="" type="checkbox"/>

## Driving experience

	Zetec	Titanium
<b>Exterior lighting</b>		
Headlights – Courtesy delay	<input checked="" type="checkbox"/>	<input checked="" type="checkbox"/>
Headlights – Halogen projector	<input checked="" type="checkbox"/>	<input checked="" type="checkbox"/>
Headlights – Adaptive headlights (with Glare-free high beam and dynamic levelling (part of optional Titanium Lux Pack)	<input checked="" type="checkbox"/>	<input checked="" type="checkbox"/>
Headlights – Daytime running lights	<input checked="" type="checkbox"/>	<input checked="" type="checkbox"/>
Headlights – LED daytime running lights	<input checked="" type="checkbox"/>	<input checked="" type="checkbox"/>
Headlights – Manual levelling control	<input checked="" type="checkbox"/>	<input checked="" type="checkbox"/>
Headlights – Dynamic auto levelling (included with Adaptive Glare-Free high beam LED headlights)	<input checked="" type="checkbox"/>	<input checked="" type="checkbox"/>
Headlights – Auto-lighting	<input checked="" type="checkbox"/>	<input checked="" type="checkbox"/>
Front fog lights – Halogen	<input checked="" type="checkbox"/>	<input checked="" type="checkbox"/>
Front fog lights – LED	<input type="checkbox"/>	<input checked="" type="checkbox"/>
Front fog lights – Cornering lights	<input checked="" type="checkbox"/>	<input checked="" type="checkbox"/>
Rear lights - LED	<input checked="" type="checkbox"/>	<input checked="" type="checkbox"/>
Shift Indicator light (Enabled)	<input checked="" type="checkbox"/>	<input checked="" type="checkbox"/>
<b>Suspension</b>		
Self-levelling (not available with AWD, or with retractable tow bar)	<input type="checkbox"/>	<input type="checkbox"/>
<b>Instruments and controls</b>		
Shift transition with paddle shifters	<input checked="" type="checkbox"/>	<input checked="" type="checkbox"/>

- Standard
- Option at extra cost
- Part of an option pack at extra cost



## Performance and efficiency

	Zetec	Titanium
Auto Start-Stop system	<input checked="" type="checkbox"/>	<input checked="" type="checkbox"/>

## Comfort and convenience

	Zetec	Titanium
<b>Interior convenience</b>		
Centre console – With fixed armrest and stowage	<input checked="" type="checkbox"/>	<input checked="" type="checkbox"/>
Centre console – With uncovered moulded cup holders	<input checked="" type="checkbox"/>	<input checked="" type="checkbox"/>
Overhead console – Full length with sunglasses stowage and child observation mirror	<input checked="" type="checkbox"/>	<input checked="" type="checkbox"/>
Stowage – Rear quarter trim LH (only available with optional Tri-Zone Electronic Automatic Temperature Control air conditioning)	<input type="checkbox"/>	<input type="checkbox"/>
Sunblinds – Rear doors, manual (available with optional Panorama Roof)	<input type="checkbox"/>	<input type="checkbox"/>
<b>Audio and communication systems</b>		
Ford SYNC DAB system with 8" TFT LCD touchscreen, 8 speakers, Voice Control, touchscreen, AppLink, Apple CarPlay, Android Auto, Emergency Assistance*, hands-free calling and Bluetooth®, compass display, media hub with 2 USB slots and FordPass Connect (embedded modem)	<input checked="" type="checkbox"/>	<input checked="" type="checkbox"/>
Ford SYNC DAB Navigation system with 8" TFT LCD touchscreen, 8 speakers, Voice Control, touchscreen, AppLink, Apple CarPlay, Android Auto, Emergency Assistance*, hands-free calling and Bluetooth®, compass display, media hub with 2 USB slots and FordPass Connect (embedded modem)	<input checked="" type="checkbox"/>	<input checked="" type="checkbox"/>
Ford SYNC Premium Sony DAB Navigation system, 8" TFT LCD touchscreen, 12 speakers, Voice Control, touchscreen, AppLink, Apple CarPlay, Android Auto, Emergency Assistance*, hands-free calling and Bluetooth®, compass display, media hub with 2 USB slots and FordPass Connect (embedded modem) (as part of optional Driver Assistance Pack, option for Titanium)	<input checked="" type="checkbox"/>	<input checked="" type="checkbox"/>
<b>Climate control</b>		
Air conditioning – Dual-Zone Electronic Automatic Temperature Control (DEATC)	<input checked="" type="checkbox"/>	<input checked="" type="checkbox"/>
Air conditioning – Tri-Zone Electronic Automatic Temperature Control	<input type="checkbox"/>	<input type="checkbox"/>

## Comfort and convenience

	Zetec	Titanium
<b>Interior lighting</b>		
Courtesy lights – LED second row reading lights	<input checked="" type="checkbox"/>	<input checked="" type="checkbox"/>
Courtesy lights – Ambient lighting (front door release handles, console main stowage bin, media hub, console pass through and front and rear footwells)	<input type="checkbox"/>	<input checked="" type="checkbox"/>
<b>Seating</b>		
Front seats – Comfort-style	<input checked="" type="checkbox"/>	<input checked="" type="checkbox"/>
Front seat – 4-way manual driver seat (fore/aft/up/down) with driver's manual lumbar support adjustment	<input checked="" type="checkbox"/>	<input checked="" type="checkbox"/>
Front seat – 18-way ERGO front seats, includes manual 8-way seat adjust, lumbar seat 4-way power, front 4-way head restraint, seat recliner-lever and cushion extension	<input type="checkbox"/>	<input type="checkbox"/>
Front seat – 10-way power driver seat with mirror and seat memory function (power fore/aft/up/down/recline/tilt/2-way power lumbar)	<input checked="" type="checkbox"/>	<input checked="" type="checkbox"/>
Front seat – 4-way manual passenger seat (fore/aft/up/down/recline) with passenger's manual lumbar support adjustment	<input checked="" type="checkbox"/>	<input checked="" type="checkbox"/>
Front seat – 10-way power passenger seat (fore/aft/up/down/recline/tilt/2-way power lumbar)	<input checked="" type="checkbox"/>	<input checked="" type="checkbox"/>
Front seats – 4-way manual height adjust passive head restraints	<input checked="" type="checkbox"/>	<input checked="" type="checkbox"/>
Front seats – Seat back tray tables (not available with ERGO seats)	<input checked="" type="checkbox"/>	<input checked="" type="checkbox"/>
Seats – Leather-trimmed (with optional Titanium Lux Pack)	<input type="checkbox"/>	<input checked="" type="checkbox"/>
Rear seats – Second row seats with manual easy entry, (fold-flat, slide and recline)	<input checked="" type="checkbox"/>	<input checked="" type="checkbox"/>
Rear seats – Third row seats with manual fold-flat, slide and recline and manual easy entry to the third row (on Titanium with ERGO seats only)	<input checked="" type="checkbox"/>	<input checked="" type="checkbox"/>
Rear seats – Third row seats with easy fold-flat and power raise, slide and recline and manual easy entry to the third row (not available with ERGO seats)	<input type="checkbox"/>	<input checked="" type="checkbox"/>

Standard

Option at extra cost

Part of an option pack at extra cost

**Note:** The Bluetooth® word mark and logos are owned by the Bluetooth SIG, Inc. and any use of such marks by Ford Motor Company Limited and its associated companies is under licence. Other trademarks and trade names are those of their respective owners.\*Ford Emergency Assistance is an innovative SYNC feature that uses a Bluetooth®-paired and connected mobile phone to help vehicle occupants initiate a direct call to the local Communications Centre, following a vehicle crash event involving an airbag deployment or fuel pump shut off. The feature operates in more than 40 European countries and regions.



## Comfort and convenience

	Zetec	Titanium
<b>Instruments and controls</b>		
Door mirrors – Power-operated, heated and power-foldable with body colour housings, side indicators and puddle lights	<input checked="" type="checkbox"/>	<input checked="" type="checkbox"/>
Door mirrors – Power-operated, heated and power-foldable with body colour housings, side indicators, puddle lights and memory	<input checked="" type="checkbox"/>	<input type="checkbox"/>
Panorama roof – Electric sliding (includes electric sunblind)	<input checked="" type="checkbox"/>	<input type="checkbox"/>
Wipers – Automatic windscreen wash and wipe with variable sensitivity adjustment (included with auto-dimming rear-view mirror)	<input checked="" type="checkbox"/>	<input checked="" type="checkbox"/>
Wipers – Ford Clearview Front Wiper System	<input checked="" type="checkbox"/>	<input checked="" type="checkbox"/>
Gearshift knob – Leather-trimmed (manual transmission only)	<input checked="" type="checkbox"/>	<input checked="" type="checkbox"/>
Rotary gearshift knob (automatic transmission only)	<input checked="" type="checkbox"/>	<input checked="" type="checkbox"/>
Steering column – Rake- and reach-adjustable	<input checked="" type="checkbox"/>	<input checked="" type="checkbox"/>
Steering wheel – Leather-trimmed	<input checked="" type="checkbox"/>	<input checked="" type="checkbox"/>
Steering wheel – Heated (only available as part of Winter Pack)	<input checked="" type="checkbox"/>	<input type="checkbox"/>
Instrument cluster Level 1 – 4.2" colour TFT display	<input checked="" type="checkbox"/>	<input checked="" type="checkbox"/>
Instrument cluster Level 3 – 10.1" colour TFT display	<input checked="" type="checkbox"/>	<input checked="" type="checkbox"/>
Ford Power starter button	<input checked="" type="checkbox"/>	<input checked="" type="checkbox"/>
Ford Keyless System with Ford Power starter button	<input checked="" type="checkbox"/>	<input checked="" type="checkbox"/>
Ford Keyless System with Ford Power starter button and hands-free tailgate	<input checked="" type="checkbox"/>	<input type="checkbox"/>
Windows – Power-operated front and rear with one touch lowering/closing	<input checked="" type="checkbox"/>	<input checked="" type="checkbox"/>
Windows – Global lowering/closing	<input checked="" type="checkbox"/>	<input checked="" type="checkbox"/>
Black foot pedals	<input checked="" type="checkbox"/>	<input checked="" type="checkbox"/>
Scuff plates – Bright-finish front door (Black finish on Trend)	<input checked="" type="checkbox"/>	<input checked="" type="checkbox"/>
Steering column – Rake- and reach-adjustable	<input checked="" type="checkbox"/>	<input checked="" type="checkbox"/>
<b>Technology</b>		
Mirror – Auto-dimming rear-view	<input checked="" type="checkbox"/>	<input checked="" type="checkbox"/>
Quickclear heated windscreen	<input checked="" type="checkbox"/>	<input checked="" type="checkbox"/>
MyKey	<input checked="" type="checkbox"/>	<input checked="" type="checkbox"/>
<b>Option packs</b>		
Titanium Lux Pack - Adaptive LED Headlamps, Leather Seats in Ebony, Variable Headed Front Seats, 10-way Power Front Seats and Power Liftgate	<input checked="" type="checkbox"/>	<input type="checkbox"/>
Driver Assistance Pack – Sony Radio/CD with DAB/navigation system with 8" touchscreen, 12 Sony speakers and Ford SYNC 3 with Voice Control and AppLink, Active Park Assist with Parallel and Perpendicular Parking, Park out Assist (Parallel only), Adaptive Cruise Control with Intelligent Speed Assistance, Traffic Sign Recognition, Front and Rear-view camera, Blind Spot Information System (BLIS)	<input type="checkbox"/>	<input type="checkbox"/>
Winter Pack – Heated windscreen and heated steering wheel	<input checked="" type="checkbox"/>	<input type="checkbox"/>

## Safety and security

	Trend	Titanium
<b>Safety</b>		
Ford Intelligent Protection System (IPS) <sup>1)</sup>	<input checked="" type="checkbox"/>	<input checked="" type="checkbox"/>
Curve Control <sup>1)</sup>	<input checked="" type="checkbox"/>	<input checked="" type="checkbox"/>
Electronic Stability Control (ESC) – Includes Trailer Sway Control <sup>1)</sup> and Hill Start Assist <sup>2)</sup>	<input checked="" type="checkbox"/>	<input checked="" type="checkbox"/>
Active Rollover Protection <sup>1)</sup>	<input checked="" type="checkbox"/>	<input checked="" type="checkbox"/>
Anti-lock braking system (ABS) with Electronic Brake-Force Distribution (EBD) <sup>1)</sup>	<input checked="" type="checkbox"/>	<input checked="" type="checkbox"/>
Airbags – Driver and front passenger's <sup>♦1)</sup>	<input checked="" type="checkbox"/>	<input checked="" type="checkbox"/>
Airbags – Front side impact <sup>1)</sup>	<input checked="" type="checkbox"/>	<input checked="" type="checkbox"/>
Airbags – Driver's knee bolster <sup>1)</sup>	<input checked="" type="checkbox"/>	<input checked="" type="checkbox"/>
Airbags – Driver and passenger first, second and third row side curtain <sup>1)</sup>	<input checked="" type="checkbox"/>	<input checked="" type="checkbox"/>
Airbags – Rear side impact (2nd row outboard) <sup>1)</sup>	<input checked="" type="checkbox"/>	<input checked="" type="checkbox"/>
Airbags – Passenger airbag deactivation switch <sup>1)</sup>	<input checked="" type="checkbox"/>	<input checked="" type="checkbox"/>
Seats – ISOFIX mounting provision for rear child seats (outer seats only) <sup>1)</sup>	<input checked="" type="checkbox"/>	<input checked="" type="checkbox"/>

Standard

Option at extra cost

Part of an option pack at extra cost

<sup>1)</sup>Safety feature, <sup>2)</sup>Driver assistance feature. ♦A rear-facing child seat should never be placed in the front passenger seat when the Ford vehicle is equipped with an operational front passenger's airbag. The safest place for children is properly restrained on the second-row seats.



## Safety and security

	Trend	Titanium
<b>Security</b>		
Childproof locks on rear doors	<input checked="" type="checkbox"/>	<input checked="" type="checkbox"/>
Remote, power central single locking	<input checked="" type="checkbox"/>	<input checked="" type="checkbox"/>
Thatcham Category 1 alarm with volume sensing, perimeter alarm battery backed (includes remote central/double locking)	<input checked="" type="checkbox"/>	<input checked="" type="checkbox"/>

## Utility

	Zetec	Titanium
<b>Body</b>		
Windows – Fixed rear quarter glass	<input checked="" type="checkbox"/>	<input checked="" type="checkbox"/>
<b>Carpet and trim</b>		
Floor mats – Carpet, front and rear deluxe	<input checked="" type="checkbox"/>	<input checked="" type="checkbox"/>
<b>Electrical</b>		
Centre console – 230 V power outlet		<input checked="" type="checkbox"/>
<b>Exterior functional</b>		
Rear bumper anti-scratch pad – Self colour	<input checked="" type="checkbox"/>	<input checked="" type="checkbox"/>
Retractable tow bar with electric release button in load compartment (including 13-pin electrical kit, permanent power supply, Trailer Sway Control and Hill Start Assist) (not available with self-levelling suspension)	<input type="checkbox"/>	<input type="checkbox"/>
Removable (detachable) tow bar	<input type="checkbox"/>	<input type="checkbox"/>
<b>Loadspace compartment</b>		
Load compartment 4 tie-down rings	<input checked="" type="checkbox"/>	<input checked="" type="checkbox"/>
Loadfloor storage compartment with latch and pull cup handle	<input checked="" type="checkbox"/>	<input checked="" type="checkbox"/>
Tonneau cover	<input checked="" type="checkbox"/>	<input checked="" type="checkbox"/>

Standard

Option at extra cost

Part of an option pack at extra cost

♦ A rear-facing child seat should never be placed in the front passenger seat when the Ford vehicle is equipped with an operational front passenger's airbag. The safest place for children is properly restrained on the second-row seats.

## Making ownership easy and affordable.

Take advantage of a range of invaluable services and make the most of your car.

### FORD SERVICE

Allows you to relax knowing we're always by your side.

With Ford, the service doesn't end when you leave the showroom. Ford Service is designed to keep your Ford in great condition and help you make the most of your car – throughout its life.

- Ford Online Service Booking
- Comprehensive service and maintenance plans
- Use of genuine Ford parts for added peace of mind
- Ford trained technicians using the latest diagnostic equipment and tools
- One Call for everything Ford 0203 564 4444
- Ford Accident Management, service free to all drivers

Also, every Ford vehicle comes with 12 months UK & European Roadside Assistance from the date of registration. This can be extended for a further 12 months when your vehicle has a Scheduled service at a participating Ford Dealer.

For more information visit [www.ford.co.uk/fordservice](http://www.ford.co.uk/fordservice)

### FORD INSURE

Trust your car insurance to the people that know it best. Designed specifically for Ford owners, it offers value, simplicity and a range of benefits that come as standard.

- Repairs carried out by experts at a Ford Accident Repair Centre
- Guaranteed repairs for as long as you own your car
- Genuine Ford Parts and manufacturer-spec glass
- Courtesy car while your Ford is being repaired at one of our Approved Repair Centres
- Free 24 hour emergency help lines
- Named Drivers earn a Ford Insure No Claims Bonus which can be used on any Ford Insure car insurance policy
- Stereo cover for any audio/visual equipment permanently fitted by the manufacturer
- Up to 90 days cover to drive in Europe

So, for cover designed with your Ford in mind, please call our UK Customer Service Team on 0333 234 9976 or go online at [www.fordinsure.co.uk](http://www.fordinsure.co.uk)

Terms and conditions apply.

Ford Insure contracts are arranged, administered and provided by EUI. EUI is a subsidiary of Admiral Group and is authorised and regulated by the Financial Conduct Authority. Registration number 309378. Registered in England and Wales as EUI Limited Reg. No 2686904. Registered Address: Tŷ Admiral, David Street, Cardiff CF10 2EH

### FORD PROTECT

Extend your warranty up to 5 years/100,000 miles with Ford Protect.

Extend your standard 3-year/60,000 miles warranty and enjoy worry-free motoring for many years to come. Ford Protect provides a range of key benefits including\*:

- High flexibility in duration and mileage
- Cover against unexpected electrical and mechanical repair costs in the UK and Europe
- With a Ford Protect Plan, the price of covered parts and labour are guaranteed for the length of your plan
- Help prolong the lifespan of your Ford vehicle
- Protects your vehicle resale value

To increase potential resale value, Ford Protect New Vehicle Warranties are transferable to the new owner should you decide to sell your vehicle.

\*Ford Protect terms and conditions apply see [ford.co.uk/extended-warranties](http://ford.co.uk/extended-warranties) for more information.

### FORD Protect Extended Warranty for New Vehicles

	Total Mileage (mls)
4 Year Protection	80,000 mls
5 Year Protection	100,000 mls





## FORD GALAXY Next steps



### try

Visit your Ford Dealer and test drive the Ford Galaxy for yourself. Find your local Dealer: [www.ford.com/SBE/DealerLocator](http://www.ford.com/SBE/DealerLocator)



### build

Go online and build and price your new Ford Galaxy to your exact specification at <https://www.ford.co.uk/cars>



### finance

When it comes to financing your vehicle, our size and expertise means we're well placed to provide you with a wide range of finance products.

Ford Credit\* provides a range of finance products for your vehicle whether you are a private or business user.

Ford Lease\*\* specialises in contract hire and leasing and provides an alternative range of finance plans which can be tailored to suit your business. Business users only.

For more information about our finance products visit [www.ford.co.uk](http://www.ford.co.uk)

\*Finance subject to status. Freepost Ford Credit.

Ford Credit is a trading style of FCE Bank plc, which is authorised by the Prudential Regulation Authority and regulated by the Financial Conduct Authority and the Prudential Regulation Authority under firm reference number 204469.

\*\*Ford Lease is provided by ALD Automotive Limited acting as Ford Lease BS16 7LB. ALD is registered in England No. 987418. ALD is authorised and regulated by the Financial Conduct Authority.



### own

When you drive away in your new vehicle, we're with you all the way. Ford has a large authorised service network to help you keep your vehicle in the best condition.

And should your new Ford ever require accident repair, a Ford Accident Repair Centre is the best place to get your vehicle back to its pre-accident condition and on the road as quickly as possible.



### FordPass

FordPass is a new platform that will empower you to rethink the way you move. Finds parking locations nearby, contains vehicle and finance details, dealer information and a host of useful guides.

Live Traffic access is free for the first 2 years following the purchase of a new Ford featuring SYNC 3 with navigation; thereafter there is an annual licence fee.



### contact

Ford Credit Account Services : 0345 712 5490

Ford Lease Customer Services : 0344 600 1405

Calls to 0344 and 0345 numbers are charged at the same rate as a standard 01 or 02 geographic number, even when calling from a mobile.



## Ford Protect Extended Warranty for New Vehicles

- 3-year/60,000 miles\* Base Warranty (first year unlimited mileage)
- 1-year/unlimited miles\* Ford Assistance Roadside Cover (Europe)
- Ford Protect Premium Plans, including scheduled servicing and extended Ford Assistance
- 3-year/60,000 miles\* Paint Warranty (first year unlimited mileage)
- 12-year/unlimited miles\* Perforation Warranty

All Galaxy Models



Standard

Optional, at extra cost

\*From the date of registration. Subject to terms and conditions.

**Illustrations, descriptions and specifications.** This catalogue was correct at the time of going to print. However, Ford policy is one of continuous product development. The right is reserved to change specifications, colours and recommended prices of the models and items illustrated and described in this publication at any time. For the latest details always consult your Ford Dealer. **Optional equipment.** Throughout this publication, wherever a feature is described as being an 'Option' or 'Option Fitment/Pack' etc, you should assume that it will be at extra cost to the base vehicle, unless specifically stated to the contrary. All models and colour combinations are subject to availability. **Note.** Some images portrayed are of a pre-production model and/or are computer generated, therefore, the design/features on the final version of the vehicle may differ in various respects. In addition, some of the features shown on the vehicles may be optional. **Note.** This brochure contains both original Ford accessories as well as a range of products from our suppliers. Fitment of accessories may have an impact on your vehicle's fuel consumption. ♦ The identified accessories are carefully selected third party supplier branded accessories which do not come with a Ford warranty but are covered by the third party supplier's own warranty, the details of which can be obtained from your Ford Dealer. **Note.** The Bluetooth® word mark and logos are owned by the Bluetooth SIG, Inc. and any use of such marks by Ford Motor Company is under licence. The iPod word mark and logos are the property of Apple Inc. Other trademarks and trade names are those of their respective owners. **Note.** Some driver assistance features and safety features described in this brochure are designed to function using sensors, whose performance may be affected under certain weather or environmental conditions.

**The Government fuel figures** do not express or imply any guarantee of the fuel consumption of any particular vehicle. The vehicles themselves have not been tested and there are inevitably differences between individual vehicles of the same model. In addition, a vehicle may incorporate particular modifications. Furthermore, the driver's style and road and traffic conditions, as well as the extent to which the vehicle has been driven and the standard of maintenance, will affect its fuel consumption. **Insurance groups** are only as recommended by the Association of British Insurers. You should always consult your insurance adviser for confirmation.

#### Ford One Call

In the unlikely event that your Ford Dealer can't help you or if you need to speak to us directly, call 0203 564 4444

#### Ford Rental – local service nationwide

Car and Van rental from our latest model range. Contact your local Ford Dealer for more information

#### Ford Motability

Call our Ford Motability team on 0345 6040019

#### Finance

Ford Credit Customer Services 0345 712 5490.  
Ford Lease Customer Services 0344 600 1405  
Calls to 0344 and 0345 numbers are charged at the same rate as a standard 01 or 02 geographic number, even when calling from a mobile.

Published by Ford Motor Company Limited, Laindon, Essex, England. Registered in England No. 235446.

FA 1505/22  
BJN 207362. FoE H30E  
PN 878502/0120/2m/GBR en  
January 2020.

© Ford Motor Company Limited.

MY 2020 GBR en



Ford and BP – working together to reduce fuel consumption and emissions.



