

2021 Hyundai

# ACCENT





# The perfect fit for how you roll.

ACCENT Limited in Pomegranate Red

You lead a busy life that keeps you on the move. And every step of the way, Hyundai Accent is with you. It's the ideal size for a quiet, comfortable sedan. Accent is agile in traffic, easy to park – and doesn't guzzle gas.

With its cascading chrome grille, available 17" alloy wheels and wraparound headlights and taillights, Accent looks as stylish as any luxury sedan. Inside, it welcomes you into a spacious interior with tech-savvy features like Apple CarPlay,<sup>1</sup> Android Auto<sup>™</sup> and Hyundai Blue Link<sup>®</sup> – all available to turn your smartphone into a powerful point of contact with your vehicle.<sup>1</sup>

Onboard Accent Limited, heated front seats offer three levels of warming on frosty mornings. Automatic temperature control maintains your preferred climate in the cabin, while fingertip controls let you quickly set your preferred positions for the heated side mirrors and leather-wrapped, tilt-and-telescopic steering wheel.

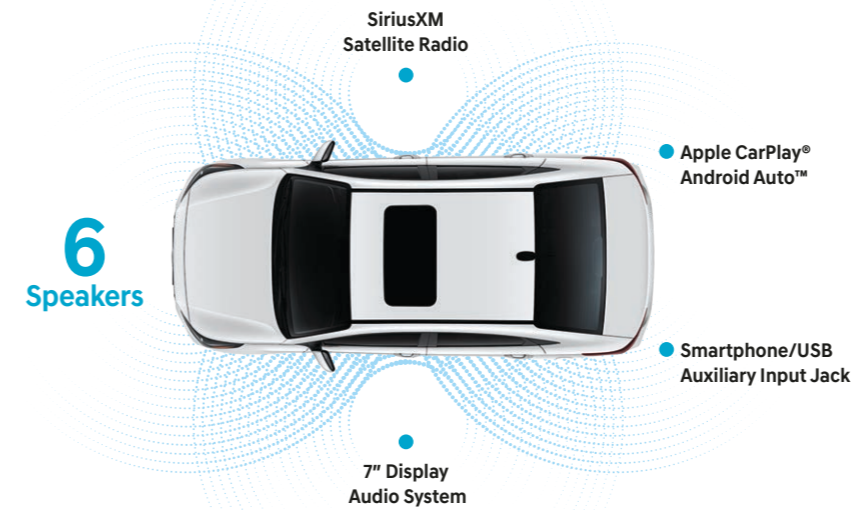
Now look up – that's a power tilt-and-slide sunroof overhead. Hyundai's got your back, too – Accent comes with America's Best Warranty and Hyundai Complimentary Maintenance for the first three years.<sup>2</sup> Now that's living the dream.

## Welcome to better.

Compare Accent Limited to its competitors, and you'll see it's filled with comfort and convenience features that make it stand out from other cars in its class. It's a difference that begins the moment you approach the car: A Proximity Key lets you unlock your door without fumbling for keys.

Approaching your vehicle with an armful of shopping bags? Accent Limited features a hands-free smart trunk that senses your presence and automatically pops the trunk release for easy access to a cargo area that swallows up to six carry-on sized suitcases.<sup>3</sup> Accent's 60/40 split-folding rear seats also give you the flexibility to carry people or oversized cargo.

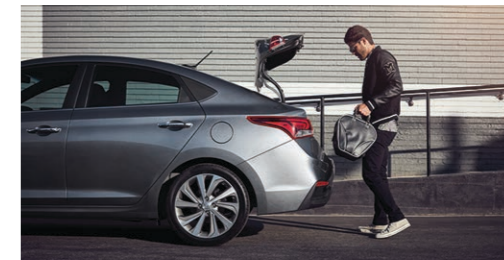
Fingertip controls on Accent's available tilt-and-telescopic steering wheel let you adjust audio and cruise control settings, or make calls using the car's Bluetooth<sup>®</sup> hands-free phone system. Keeping your smartphone and other devices powered is easy, too – Accent comes standard with convenient front and available rear-seat USB charge ports.



60/40 split-folding rear seats



Automatic temperature control



Hands-free smart trunk



Steering wheel audio and cruise controls

<sup>1</sup>Apple CarPlay works with iPhone 5s, iPhone 5c, iPhone 5 and later models running the latest version of iOS 7 and above. Apple is a registered trademark of Apple Inc. Android Auto works with smartphones running on Android 5.0 Lollipop and higher. Android, Android Auto, Google Play and other marks are trademarks of Google Inc. <sup>2</sup>Based on total package of warranty programs. See dealer for LIMITED WARRANTY details and refer to back cover of this brochure for details on Hyundai Complimentary Maintenance. <sup>3</sup>The smart trunk will open when your Proximity Key is within 3 feet of the detection area for at least 3 seconds. Radio transmitters and other vehicle smart keys may interfere with the normal operation of this feature. See Owner's Manual for further details and limitations. Always close the trunk before operating your vehicle.



ACCENT Limited in Pomegranate Red

## Look here for hidden gems.

When you take your test drive, listen to how quiet – and feel how calm – Accent is over rough roads. And be sure to note the steering precision in corners, too. The secret to why Accent is so satisfying to drive lies beneath its stylish exterior: The chassis is made with advanced high-strength steel. This gives Accent what engineers call torsional rigidity – a resistance to twisting forces.

It translates steering inputs and suspension reflexes into a smooth, substantial driving feel – the kind you’d expect could only come from a larger, more expensive sedan. The use of high-strength steel also helps enhance Accent’s ability to withstand impact forces in a collision. Of course, our hope is that you never have an accident in the first place. Which is why Accent Limited comes equipped with safety technologies like Forward Collision-Avoidance Assist.<sup>1</sup>

Accent is also the only car in its class available with 4-wheel disc brakes.<sup>2</sup> Press the brake pedal, and it responds with swift, sure stopping power. Press the gas pedal, and you’ll feel the quick acceleration of a spirited 1.6L 4-cylinder engine and proprietary Smartstream Intelligent Variable Transmission.<sup>3</sup> You’ll see advantages at the gas pump, too – Accent has an EPA-estimated 41 MPG highway rating.<sup>4</sup>



### ACCENT Safety Technologies<sup>5</sup>



Rearview camera with dynamic guidelines



LED headlights and Daytime Running Lights



Vehicle Stability Management



17" Alloy Wheels

<sup>1</sup>Forward Collision-Avoidance Assist (FCA) is designed to assist drivers to help avoid, or reduce the severity of, collisions with cars that have slowed or stopped in front of them. It is a supplemental assist and does not replace the need for extreme care and attention by the driver. FCA may not stop the vehicle completely and will not avoid all collisions. See Owner's Manual for details and limitations. <sup>2</sup>Claim based on comparison of specifications on manufacturer websites at the time of printing. <sup>3</sup>Available on Accent SE, standard on SEL and Limited. <sup>4</sup>EPA estimate for vehicles equipped with a Smartstream Intelligent Variable Transmission. Estimates are for comparison only. Mileage may vary. Your actual mileage will vary with options, driving conditions, driving habits and the vehicle's condition. <sup>5</sup>Standard and available safety features vary by model and trim level. See your Hyundai dealer or [hyundaiusa.com](http://hyundaiusa.com) for details.

# Technology this amazing borders on magic.

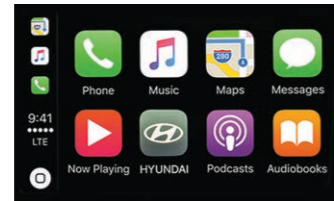
Thankfully, there's no trick to enjoying all of the innovations available with Accent. In fact, it's easy. Apple CarPlay® and Android Auto™ pair your compatible smartphone with Accent's 7" touchscreen audio system – standard on SEL and Limited! Using the car's touchscreen or voice commands, you can access your phone's music, messages, navigation and more.

With the MyHyundai app, life between your home, your workplace and your Accent Limited is seamless. That's the power of Hyundai Blue Link® technology.<sup>2</sup> While you're preparing to leave, Blue Link lets you remotely start Accent Limited's engine and warm or cool its interior using your compatible smartphone, smartwatch or Amazon Echo®/Google Home™ device.<sup>3</sup>

Then there's Blue Link Connected Care. Free for your first 3 years of ownership, it offers Monthly Vehicle Health Reports, Enhanced Roadside Assistance, 24/7 SOS Emergency Assistance and Automatic Collision Notification that calls for help if you've been in an accident where an airbag has been deployed.



Blue Link remote access with Amazon Echo



Apple CarPlay



Rear-seat USB charge port

<sup>1</sup> Apple CarPlay works with iPhone 5s, iPhone 5c, iPhone 5 and later models running the latest version of iOS 7 and above. Apple and Apple CarPlay are registered trademarks of Apple Inc. Android Auto works with smartphones running on Android 5.0 Lollipop and higher. Android, Android Auto, Google Play and other marks are trademarks of Google Inc. <sup>2</sup> Standard on Accent Limited only. Blue Link Connected Care and Remote packages are complimentary for the first 3 years of ownership and require an active Blue Link subscription agreement subject to the Connected Services Terms and Conditions. Three-year term starts from the new vehicle date-of-first-use, is available for new vehicle purchases and leases, and is transferable to subsequent owners subject to the Terms and Conditions. Only use Blue Link and corresponding devices when it is safe to do so. Cellular and GPS coverage is required. Features, specifications and fees are subject to change. For more on details and limitations, visit [hyundaiusa.com](http://hyundaiusa.com) or your authorized Hyundai dealer. <sup>3</sup> Requires Accent Limited with active Blue Link subscription and Remote package. Remote stop only available when in remote start mode. Amazon, Alexa and all related logos and motion marks are trademarks of Amazon.com, Inc. or its affiliates. Google Assistant and Google Home are trademarks of Google Inc. <sup>4</sup> EPA estimates are for comparison only. Mileage may vary. Your actual mileage will vary with options, driving conditions, driving habits and the vehicle's condition.



**Automatic Emergency Assistance**  
Blue Link Connected Care offers 24/7 SOS Emergency Assistance and Automatic Collision Notification that calls for help if you're in an accident where an airbag is deployed.



**On-Demand Diagnostics**  
Run vehicle diagnostics from your car's touchscreen. If an issue is found, schedule service by pressing a button on the rearview mirror. Details are sent to your preferred dealer.



**Customizable Alerts**  
Proud parent of a teen driver? Hyundai Blue Link lets you set curfew, geofence and speed alerts so you can relax when your loved ones are on the road.



**Car Finder**  
Our Car Finder smartphone app feature lets you navigate your way through crowded parking lots back to your Hyundai.



**Service Link**  
Conveniently schedule your car for service from the driver seat of your Accent Limited, or by using the Hyundai smartphone app.



**Remote Controls**  
Use your smartphone, home assistant or wearable device to remotely start your Accent Limited's engine, unlock the doors, set the cabin temperature and more.

**EPA MPG Estimates (City/Highway/Combined)<sup>4</sup>**  
**33/41/36** Smartstream Intelligent Variable Transmission  
**29/39/33** 6-Speed Manual Transmission

## ACCENT SE



**Popular Features**  
-5" color touchscreen audio system  
-Rearview camera with dynamic guidelines  
-Steering wheel audio and cruise controls  
-Bluetooth® hands-free phone system

## ACCENT SEL



**Popular Features**  
-7" color touchscreen AM/FM/SiriusXM/MP3 audio system with 6 speakers  
-Front and rear-seat USB charge ports  
-Automatic headlights

## ACCENT Limited



**Popular Features**  
-Proximity Key with push button start  
-Forward Collision-Avoidance Assist  
-LED headlights and taillights  
-LED Daytime Running Lights  
-Automatic temperature control with auto-defogging windshield  
-Heated front seats  
-Blue Link® Connected Car System

**1.6L DPI 4-cylinder**  
**hp 120**  
**lb-ft 113**

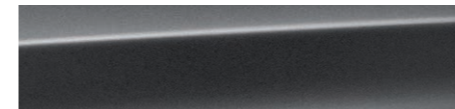
## Exterior Colors



Frost White Pearl



Olympus Silver



Forge Gray



Pomegranate Red



Admiral Blue



Absolute Black

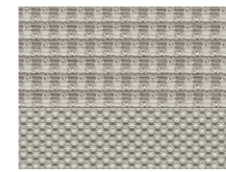
## Interior Colors



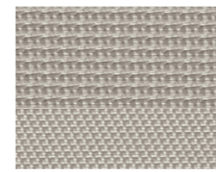
Limited Black Cloth



SE/SEL Black Cloth



Limited Beige Cloth



SE/SEL Beige Cloth

## ACCENT

	SE	SEL	Limited
<b>Power &amp; Handling</b>			
120 hp/113 lb-ft, Smartstream 1.6L Dual Port Injection 4-cylinder engine	●	●	●
6-speed manual transmission	●	–	–
Smartstream Intelligent Variable Transmission with SHIFTRONIC®	○	●	●
Ventilated front disc brakes	●	●	●
Rear disc brakes	–	●	●
Motor-Driven Power Steering	●	●	●
<b>Exterior Features</b>			
Chrome grille	●	●	●
Automatic headlights	–	●	●
LED headlights and LED taillights	–	–	●
LED Daytime Running Lights	–	–	●
Front fog lights	–	●	●
Power tilt-and-slide sunroof	–	–	●
Bodycolor exterior door handles	●	●	–
Chrome exterior door handles	–	–	●
Chrome lower side-window molding	–	●	●
Power windows	●	●	●
Power bodycolor side mirrors	●	●	●
Side mirrors with turn signal indicators	–	–	●
Heated side mirrors with driver blind spot mirror	–	●	●
Hands-free smart trunk release	–	–	●
Intermittent windshield wipers	●	●	●
Rear window defroster with timer	●	●	●
<b>Interior Features</b>			
Remote keyless entry system with alarm	●	●	–
Proximity Key entry with push button start	–	–	●
3.5" multi-information display	–	–	●
Tilt steering wheel	●	–	–
Tilt-and-telescopic steering wheel	–	●	●
Steering wheel audio and cruise controls	●	●	●
Leather-wrapped steering wheel and shift knob	–	–	●
Automatic temperature control	–	–	●
Auto-defogging windshield	–	–	●
Heated front seats	–	–	●
6-way adjustable driver seat including height adjustment	●	●	●
Cloth seating surfaces and door inserts	●	●	●
60/40 split-folding rear seats	●	●	●
Sliding sunvisors with dual vanity mirrors	●	●	●
Driver's auto-up window	–	●	●
Center console storage with sliding armrest	–	●	●
Cabin air filter	●	●	●

## ACCENT

	SE	SEL	Limited
<b>Interior Features</b>			
Hood insulator	●	●	●
One-touch triple turn signal	●	●	●
Front and rear-seat USB charge ports	–	●	●
<b>Advanced Safety</b>			
Forward Collision-Avoidance Assist	–	–	●
6-airbag safety system: Front, front side-impact and side-curtain airbags with Occupant Classification System	●	●	●
Vehicle Stability Management	●	●	●
Electronic Stability Control with Traction Control System	●	●	●
ABS with Electronic Brake-force Distribution and Brake Assist	●	●	●
Hillstart Assist Control (Intelligent Variable Transmission only)	○	●	●
<b>Audio &amp; Connected Car Technology</b>			
5" color touchscreen AM/FM audio system with 4 speakers	●	–	–
7" color touchscreen AM/FM/SiriusXM/MP3 audio system with 6 speakers	–	●	●
Bluetooth® hands-free phone system	●	●	●
Apple CarPlay® and Android Auto™	–	●	●
Smartphone/USB and MP3 auxiliary input jacks	●	●	●
Rearview camera with dynamic guidelines	●	●	●
Blue Link® Connected Car System (3 years complimentary)	–	–	●

● Standard ○ Optional – Not Available

## Exterior & Interior Dimensions ACCENT

Wheelbase	101.6 in
Overall Length	172.6 in
Overall Width (excluding mirrors)	68.1 in
Overall Height	57.1 in
Headroom, front / rear	38.9 / 37.3 in
Legroom, front / rear	42.1 / 33.5 in
Shoulder Room, front / rear	54.2 / 53.7 in
Total Interior Volume	103.9 cu ft

## Wheels





Hyundai Hope On Wheels®

Helping Kids Fight Cancer Since 1998



## Hope makes every Hyundai better.

Each time we sell a Hyundai, a portion goes to Hyundai Hope On Wheels® to help find a cure for childhood cancer. Over the last 22 years, Hyundai Hope On Wheels has donated more than \$170 million. Hope is our greatest feature. And it comes standard on every Hyundai. For more information, please visit [HyundaiHopeOnWheels.org](http://HyundaiHopeOnWheels.org).



## America's Best Warranty

POWERTRAIN  
LIMITED WARRANTY

10 YEARS 100,000 MILES

NEW VEHICLE  
LIMITED WARRANTY

5 YEARS 60,000 MILES

ANTI-PERFORATION  
WARRANTY

7 YEARS UNLIMITED MILES

24/7 ROADSIDE  
ASSISTANCE

5 YEARS UNLIMITED MILES



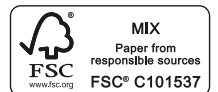
**Hyundai**  
Complimentary  
Maintenance

Complimentary maintenance includes Hyundai-approved oil and oil filter change (except for electric vehicles and fuel cell electric vehicles) plus tire rotation at normal factory-scheduled intervals for 3 years or 36,000 miles, whichever comes first. This offer valid only for new 2020-2021 Hyundai models purchased or leased on or after February 1, 2020. See your Hyundai dealer for further details and limitations.

HYUNDAI  
**Assurance**  
HYUNDAIASSURANCE.COM

Our commitment to Hyundai owners does not end with the transfer of keys. Wherever the road takes you, we've got your back with Hyundai Assurance, an umbrella of services and benefits that includes America's Best Warranty, 24/7 Roadside Assistance, innovative safety and car care features...and more.

See dealer for LIMITED WARRANTY details. Fuel economy estimated by EPA for comparison only. Mileage may vary. While the information contained in this brochure was correct at the time of printing, specifications and equipment can change. Feature comparisons based on competitor information available at the time of printing. No warranty or guarantee is being extended in this brochure, and Hyundai reserves the right to change product specifications and equipment at any time without incurring obligations. Some vehicles are shown with optional equipment. Specifications apply to U.S. vehicles only. Please contact your Hyundai dealer for current vehicle specifications. As part of Hyundai's commitment to a responsible environment, this brochure was printed using paper certified by the Forest Stewardship Council®. FSC® certification helps ensure that the highest social and environmental standards are met in the making of the paper we use, contributing to conservation, responsible management and community-level benefits for people near the forests.



©2020 HYUNDAI NP020Q2021