

CARGO VAN
CREW VAN
PASSENGER VAN
CAB CHASSIS/CUTAWAY
4X4

FREIGHTLINER VANS



The 2020 Sprinter

- 4 The Freightliner Vans Story
- 6 Introduction
- 8 Our Factory
- 10 Safety
- 12 Performance
- 14 Cost Efficiency
- 16 Connectivity
- 18 Infotainment
- 20 Sprinter Overview
- 22 Sprinter Cargo
- 24 Sprinter Crew
- 26 Sprinter Passenger
- 28 Sprinter Cab Chassis/Cutaway
- 30 Sprinter 4x4
- 32 MasterUpfitter
- 33 MasterSolutions™
- 34 Finance Solutions
- 35 Service & Maintenance
- 36 Sprinter Specifications



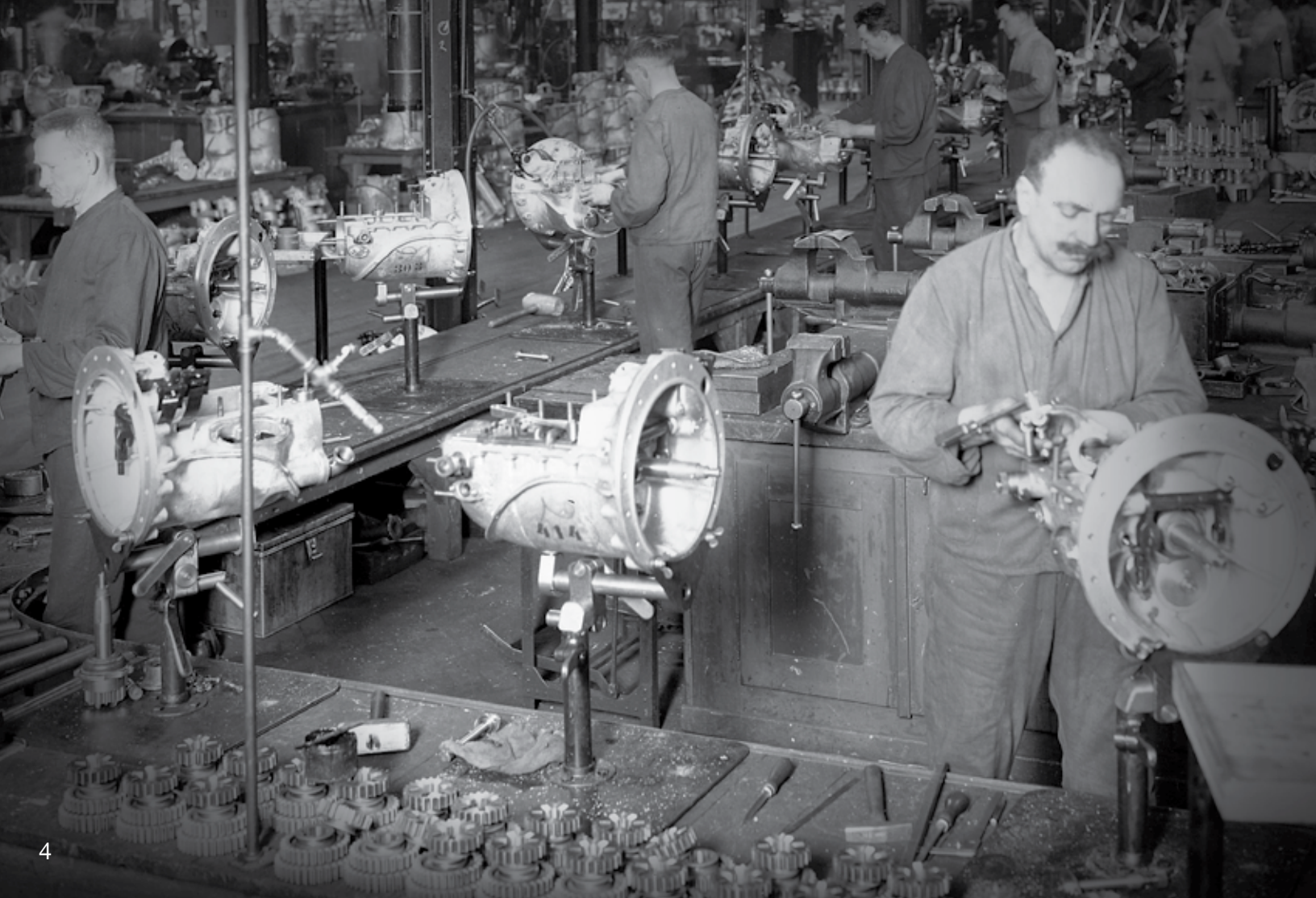
BLOOD, SWEAT,

AND GEARS.



The Freightliner Vans story.

What do you do if you're a long-distance hauling company, but all the heavy trucks available at the time don't have the power to climb steep hills? Answer: You build your own. The Freightliner brand was born out of that "lead or get out of the way" spirit, and that spirit is as strong as ever today in Sprinter Vans. While these vans continue to push the envelope for innovation and technology, they still hold true to our core values: to create vans that deliver an extraordinary level of safety, performance, and cost efficiency to every owner.



BUMPER-TO-BUMPER PRODUCTIVITY.

At Freightliner, we don't do anything halfway. When we tell you that the Sprinter is built for you, we mean it. The building starts with you choosing a tough, durable body in the configuration you need, with all the features and benefits that have made Sprinter Vans a leader for two decades. That includes a turbocharged gasoline engine* with a Best-in-Class 9G-TRONIC 9-speed automatic transmission as standard equipment. From there, pick from a wide range of options and features to customize the Sprinter to your specifications. The result is a van that's all work and no slack. Built for you. The Sprinter.

*Gasoline engine not available on all models. Available Summer 2020.



ADVANCED CONNECTIVITY



BOLD DESIGN



INNOVATIVE CONCEPT



OUR ROOTS ARE DEEP. OUR FUTURE IS LIMITLESS.



The Freightliner brand began in the 1930s with heavy trucks produced at the Consolidated Freightways plant in Salt Lake City, UT. From there, manufacturing moved to Portland, OR, and then to Cleveland, OH. Our state-of-the-art facility in North Charleston, SC, has created new job openings for skilled workers. This plant is more than an investment in the Sprinter. It's a continued investment in America.



WE'RE SERIOUS ABOUT SAFETY.

Other manufacturers build vans with safety features they think are good enough. We're not other van manufacturers. When it comes to your safety, we're never satisfied. For example, the Sprinter has features you'd expect to find only in the latest passenger vehicles. That's in addition to the list of standard and optional safety innovations that made Sprinter Vans a leader in safety in the first place.



SAFETY FEATURES



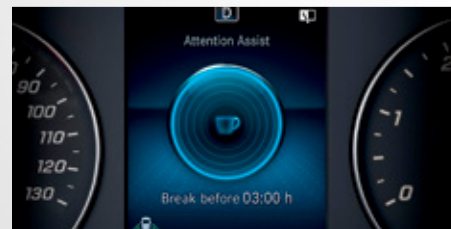
ACTIVE BRAKE ASSIST¹

This advanced system senses the likelihood of a collision with a vehicle ahead and sends both a visual and audible warning followed by initiating autonomous braking.



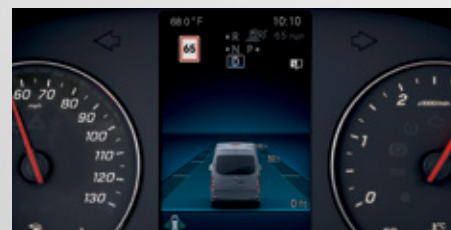
ACTIVE DISTANCE ASSIST DISTRONIC⁰²

This intelligent cruise control system senses traffic conditions and actively controls your speed to keep you at a safe distance.



ATTENTION ASSIST⁰⁴

This system helps prevent drowsy driving by monitoring your driving patterns and providing an early warning in case fatigue is detected.



TRAFFIC SIGN ASSIST³⁹

This system uses a camera to give drivers additional help with identifying speed restriction signs, No Passing Zones, and No Entry signs.



360° CAMERA³

When the Reverse gear is selected, this visual parking aid uses four digital cameras to generate various views of the vehicle's surroundings and show them in real time on the multimedia display.



BLIND SPOT ASSIST⁵

Blind Spot Assist⁵ has Rear Cross-Traffic Alert (RCTA)⁶, which employs automatic braking to avoid a collision with traffic crossing the vehicle's path (e.g., vehicles or pedestrians) when reversing.



ACTIVE LANE KEEPING ASSIST⁷

This system can provide you with visual and audible warnings if your van leaves its lane unintentionally. A camera in the windshield monitors the road ahead and helps detect when you may have veered away from lane markings.



CROSSWIND ASSIST⁸

Helps stabilize your van and boosts safety in strong, gusting crosswinds. This standard feature helps ensure that your vehicle remains in its lane at highway speeds.



HIGHBEAM ASSISTSM

Adjusts the high- and low-beam headlamps automatically, allowing for continuous adaptation to the prevailing traffic situation. This system helps ensure better and earlier recognition of the course of the road.



HILL START ASSIST

This system briefly stops the vehicle from rolling backward or forward, providing you with an extra level of safety and confidence when making a hill start. Hill Start Assist maintains brake pressure for approximately two seconds, so you can remove your foot from the brake pedal without rolling.



LOAD-ADAPTIVE ELECTRONIC STABILITY PROGRAM (ESP)⁹

This dynamic handling system actively intervenes to help keep the van firmly under control and safe by automatically braking individual wheels, and reducing engine power to help stabilize the vehicle if wheelspin, understeer, or oversteer is detected.



RESCUE ASSISTSM

With Rescue AssistSM, first responders to an accident can scan a QR code in a van to quickly see where batteries, airbags, and other structural elements are located in order to safely perform the rescue.



DRIVER AND PASSENGER AIRBAGS¹⁰

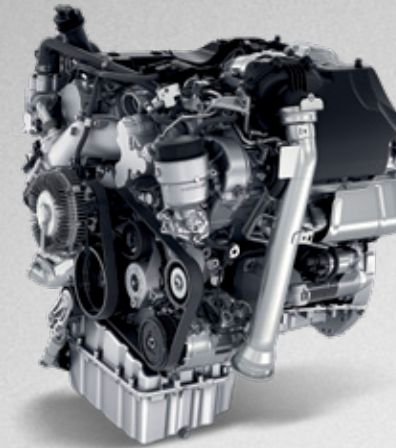
The driver and passenger front, thorax, and window airbags¹⁰ help protect you and your passengers in the event of a collision.

Sprinter airbags shown are from model year 2014.

MUSCLE THROUGH

THE TOUGH JOBS.

**CHOOSE BETWEEN DIESEL OR GAS,
WITH THE SAME FREIGHTLINER DURABILITY.**

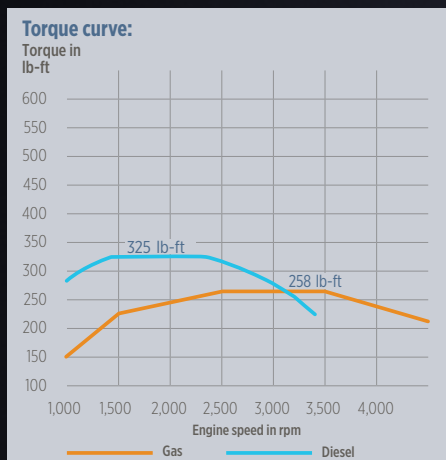
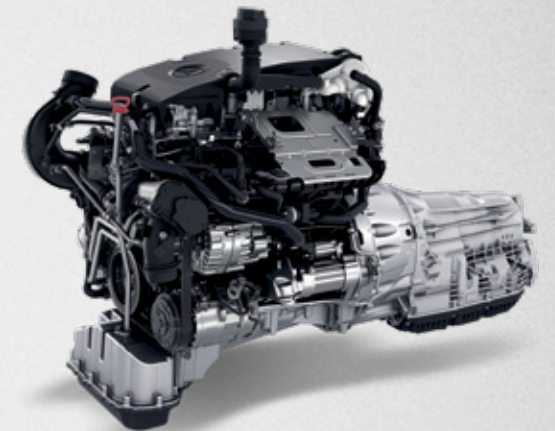


3.0L 6-CYLINDER TURBO DIESEL¹¹

- Configuration: DOHC
- Induction System: Common-Rail-Direct-Injection (CDI)
- Bore/Stroke: 83.0 mm/92.0 mm
- Horsepower @ rpm: 188 hp @ 3,800 rpm
- Torque: lb-ft @ rpm: 325 lb-ft @ 1,400–2,400 rpm
- Transmission: Automatic Transmission, 7G-TRONIC Plus

2.0L 4-CYLINDER TURBO GASOLINE ENGINE*

- Configuration: DOHC
- Induction System: Bosch injection (200 bar)
- Bore/Stroke: 83.0 mm/92.0 mm
- Horsepower @ rpm: 188 hp @ 5,000 rpm
- Torque: lb-ft @ rpm: 258 lb-ft @ 2,500–3,500 rpm
- Transmission: Automatic Transmission, 9G-TRONIC



WE'RE TALKING TORQUE.

Horsepower numbers are fine, but torque is what your van needs to get up to speed. What's also important is the rpm at which the peak torque numbers come in. Notice how the Sprinter's peak torque comes in at 1,400 rpm — just above an idle. This means that you'll be at peak torque quickly — and moving from a standing stop efficiently.

When you're knee-deep in a big job, you shouldn't be wondering if your van can handle the load you're packing in it. The Sprinter's drivetrains can take what you dish out — and save you money along the way.

The standard drivetrain is a 4-cylinder turbocharged gasoline engine* mated to a Best-in-Class 9G-TRONIC 9-speed automatic transmission. A 3.0L 6-cylinder turbo diesel engine¹¹ with a 7G-TRONIC Plus 7-speed automatic transmission is also available. Plus, the optional 4x4 drivetrain with on-demand 4-wheel drive will keep you going when weather or road conditions get tough.

*Gasoline engine not available on all models. Available Summer 2020.

THE REAL COST OF OWNERSHIP.

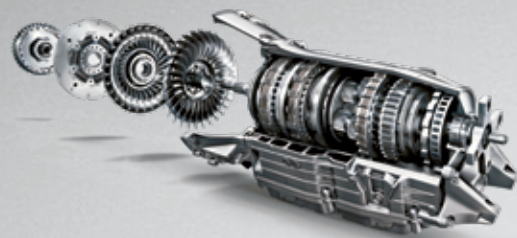
If your van is down for maintenance or repairs, you're not making any money. Worse yet, you could be losing jobs to your competition. With their lengthy service intervals, a turbocharged 4-cylinder gasoline engine with Direct Injection, and 258 lb-ft of torque as standard equipment,* Sprinter Vans keep your total cost of ownership low and your productivity high. So you stay on the road — and ahead of your competition.

In addition to lowering your total cost of ownership, the Sprinter helps keep drivers efficient and productive with amenities such as:

- Ergonomic seats with lowered sides and lumbar supports
- A comfortable pedal position
- Elimination of display reflections in the windshield
- Optimized noise reduction
- Increased steering wheel adjustability
- Multiple rear-step variations



Efficient Diesel Engine¹¹ With turbocharged power, 325 lb-ft of torque, and diesel fuel economy, the Sprinter's impressive 6-cylinder engine delivers power and durability in one compact package.



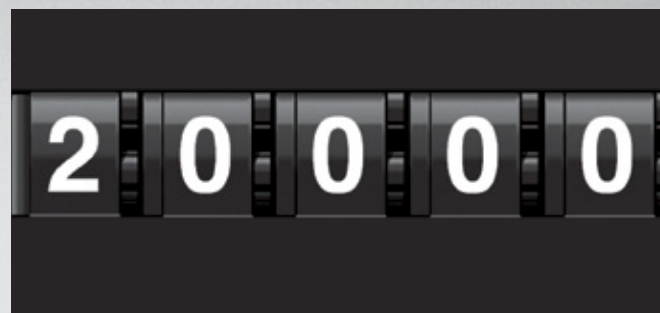
7G-TRONIC Plus 7-Speed Automatic Transmission
The low first gear and overdrive high gear in the Sprinter's 7-speed automatic transmission help you accelerate from a stop, and conserve fuel on the highway.



9G-TRONIC 9-Speed Automatic Transmission
This transmission is a first for the segment and features rapid response, a smooth transition between gears, and efficient highway driving.



Gasoline Engine* The Sprinter offers an available turbocharged 4-cylinder gasoline engine* with Direct Injection and 258 lb-ft of torque as standard equipment.



Up to a 20,000-Mile Service Interval¹² The Sprinter's Best-in-Class service intervals of up to 20,000 miles¹² for diesel and up to 15,000 miles¹² for gas keep you on the road, raising productivity and lowering the total cost of ownership.



Sustainable Cost Efficiency Fuel consumption optimization, reduced internal engine friction, and a more efficient belt drive system help keep your costs down and your productivity up.

TECHNOLOGY THAT MAKES YOUR JOB EASIER.

Mercedes PRO¹³ connect is the first of several Mercedes PRO solutions. It works harder to make your job easier — intelligently connecting fleet managers, drivers, and vehicles to increase the efficiency and productivity of your company in the long run.

Mercedes PRO connect is standard on every Sprinter.



Vehicle Management Tool¹⁴ — the control center.
The fleet manager's customized hub of connectivity that provides a comprehensive overview of fleet resources — simplifying logistics and increasing productivity.

Communication Module¹⁵ — standard in every Sprinter.
This is the central point of contact that ensures the broadest range of connectivity, quickly transmitting data with the permanently installed 4G LTE SIM card.



MERCEDES PRO CONNECT IS MADE UP OF THESE 3 ELEMENTS



Mercedes PRO connect App¹⁶ — the direct line to the driver.
The driver can easily access valuable vehicle- and job-related information.

3 BUNDLES FOR EVERY CONNECTIVITY NEED.



Optimized Assistance

SERVICES INCLUDED:

- Accident and Breakdown Management
- Emergency Call System¹⁷
- Live Traffic Information¹⁸
- Car-to-X Communication¹⁹
- Software Updates²⁰
- Internet in the Car²¹
- Maintenance and Repair Management²²
- Online Map Update²³
- Navigation Functions²⁴
- Multimedia Functions²⁵



Efficient Fleet Management

SERVICES INCLUDED:

- Remote Control²⁶
- Vehicle Supervision²⁷
- Eco Monitor
- Drive Style Monitor
- Vehicle Operations²⁸
- Fleet Communication incl. Send2Car²⁹
- Digital Driver's Log³⁰
- Digital Trip Management
- Theft Warning³¹



Data Interface Vans

SERVICES INCLUDED:

- Vehicle Data Interface (extended)
- Vehicle Data Interface (light)



FOR THE BUSINESS OWNER

- Increase overall business efficiency
- Easy location of a stolen vehicle through the Vehicle Management Tool, which shows the vehicle's current position
- Potential for a reduction in fuel consumption and, therefore, lower fuel costs

BENEFITS AT A GLANCE



FOR THE FLEET MANAGER

- Integration into multibrand vehicle management systems
- Clear overview of the fleet, as each vehicle's information is clearly shown in the Vehicle Management Tool
- Trips can be planned more efficiently and on shorter notice, as the fleet manager has all the current data available at a glance

FOR THE DRIVER

- Effective assistance in case of an emergency
- Makes work easier, as the vehicle remote control also works when the vehicle key is not available
- More efficient working procedures, as addresses can be input directly into the vehicle's navigation system for faster arrival

ACCELERATE YOUR EFFICIENCY.

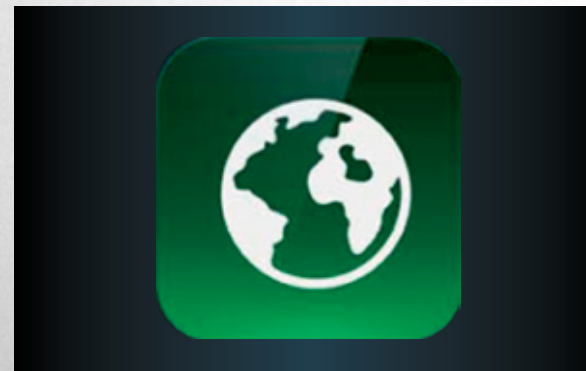
Wasted time is wasted money. The Sprinter's advanced infotainment system will help keep you connected and productive while you're on the road. All the features of the infotainment system are incorporated into the overall design of the cabin and easy to reach, thereby minimizing wasted motion and increasing functionality. It's just our way of helping you make every minute count.



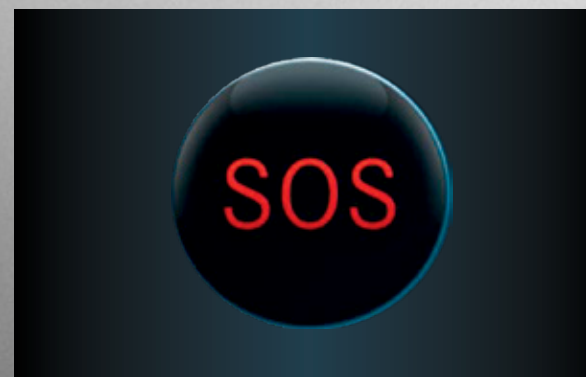
Charging options are strategically located on the dashboard and include USB-C ports and 12V chargers as standard equipment, along with an available wireless option.



Smartphone integration for Apple CarPlay® and Android™ Auto,³² as well as Bluetooth® capability, is available in the Sprinter.



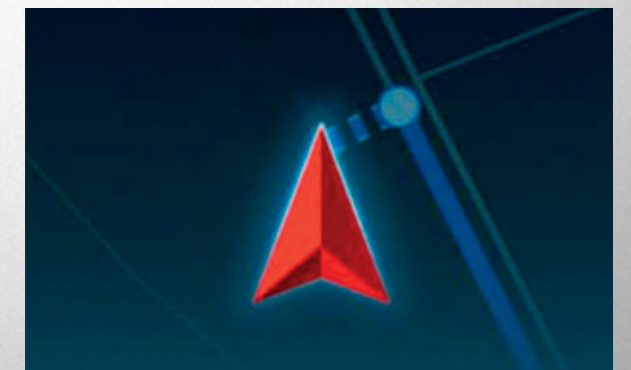
The wireless Internet access²¹ is a highly stable connection that allows for the use of mobile devices in the vehicle.



7" and 10.25" Touchscreens, activated via touch, voice control, or touch buttons on the steering wheel, are available in the Sprinter.



The innovative MBUX (Mercedes-Benz User Experience) delivers content from navigation to entertainment and includes optional LINGUATRONIC "Hey Sprinter" voice control and what3words, our geocoded map system.



Live Traffic Information¹⁸ provides traffic data in real time for more efficient traveling to and from work.

Emergency Call System¹⁷ sends out an automatic emergency call for faster arrival of rescue services.

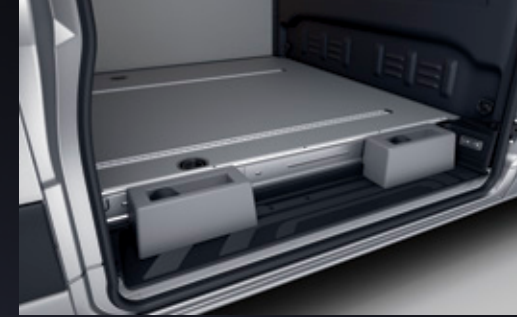
TIME TO STEP UP.

When you're done with compromising, you're ready for the Sprinter. It's built for you, with thousands of features, options, and upfit solutions designed to raise productivity and lower costs. From straight-up hauling cargo to carrying crew or passengers, creating your own box truck, or even handling rough terrain with a 4x4 option, we have the configuration you need. That's because we're dedicated, focused, and committed to building the most capable vans on the road.

Take a look at the full lineup of Sprinter Vans, and let us show you what we're made of.



YOU'VE GOT THIS.



Pallet bracing and tie-downs³³ help when hauling cargo with unusual sizes and shapes.

The Sprinter 4500 model sets the benchmark for payload capacity of up to 6,768 lbs.



1500. 4500. Two numbers in the Sprinter line that can change the way you work. The 1500 is a lighter-duty model that delivers big-time productivity. For serious hauling capability, the 4500 model will handle your heaviest jobs. There's also a 2500, a 3500, and a 3500XD model. Whichever you choose, the service intervals of up to 20,000 miles¹² for diesel and up to 15,000 miles¹² for gasoline will help keep your productivity high and your cost of ownership low.

SPRINTER CARGO

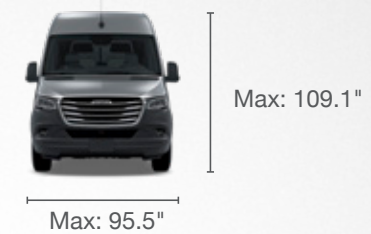
AVAILABLE IN 1500, 2500, 3500, 3500XD & 4500 SERIES

TWO ROOF HEIGHTS

STANDARD ROOF



HIGH ROOF

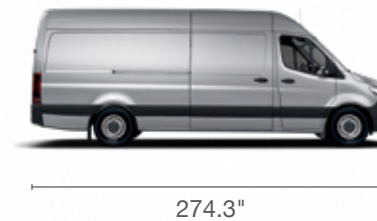


THREE LENGTHS

144" WHEELBASE



170" WHEELBASE



170" EXT. WHEELBASE



All measurements in inches. All width measurements include mirrors. See page 40 for a complete listing of models and specifications.

QUICK FACTS

MAXIMUM PAYLOAD: 6,768 lbs.

MAXIMUM TOWING CAPACITY:³⁴ 7,500 lbs.

ENGINES: 2.0L 4-cylinder turbo gasoline,*
3.0L 6-cylinder turbo diesel¹¹

TRANSMISSIONS: 9G-TRONIC 9-speed Automatic Transmission,
7G-TRONIC Plus 7-speed Automatic Transmission

MAXIMUM CARGO VOLUME: 532.6 cu. ft.

MAXIMUM CARGO FLOOR LENGTH: 189.4"

MAXIMUM CARGO FLOOR WIDTH: 70.4"

MAXIMUM INTERIOR STANDING HEIGHT: 79.1"

Available on the Single tire models, this wheel arch covering's square shape and flat top provide extra storage opportunities, as well as protection for the wheel arch.

The rear doors feature hinges with self-locking mechanisms.

LED strip lighting improves cargo-loading vision.

MORE WAYS TO GET MORE DONE.

The removable 3-seat bench is covered in durable upholstery and offers your crew a roomy, safe, and comfortable ride.



In addition to seating for up to five people, the Sprinter Crew Van features ample cargo space.



Is every job the same? No. That's why you need a van that can roll with the changes. If the job calls for manpower, the Sprinter crew configuration can easily carry up to five people while still leaving you plenty of cargo room. You can have turbocharged power and the convenience of gasoline in one package with a 4-cylinder turbocharged gasoline engine* with a Best-in-Class 9G-TRONIC 9-speed automatic transmission as standard equipment. A V6 turbo diesel engine¹¹ with a 7G-TRONIC Plus 7-speed automatic transmission is also available.

SPRINTER CREW

AVAILABLE IN 2500, 3500, 3500XD & 4500 SERIES

TWO ROOF HEIGHTS

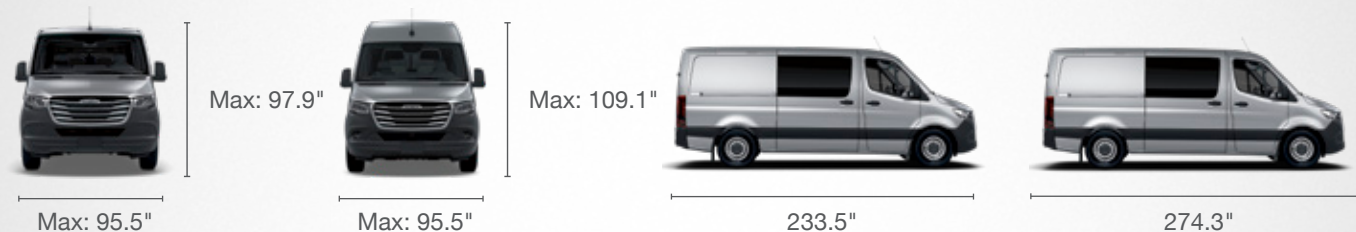
STANDARD ROOF

HIGH ROOF

TWO LENGTHS

144" WHEELBASE

170" WHEELBASE



All measurements in inches. All width measurements include mirrors. See page 42 for a complete listing of models and specifications.

QUICK FACTS

- MAXIMUM PAYLOAD: 6,382 lbs.
- MAXIMUM TOWING CAPACITY:³⁴ 7,500 lbs.
- ENGINES: 2.0L 4-cylinder turbo gasoline,* 3.0L 6-cylinder turbo diesel¹¹
- TRANSMISSIONS: 9G-TRONIC 9-speed Automatic Transmission, 7G-TRONIC Plus 7-speed Automatic Transmission
- MAXIMUM CARGO VOLUME: 370.8 cu. ft.
- MAXIMUM CARGO FLOOR LENGTH: 144.3"
- MAXIMUM INTERIOR STANDING HEIGHT: 75.5"
- SEATING CAPACITY: Up to five

*Gasoline engine not available on all models. Available Summer 2020.





YOUR PASSENGERS DESERVE THIS.

Looking to carry more passengers? The Sprinter accomplishes that in a big way with seating for **up to 15 people**.^{*} That means room to sit, stretch out, and stand. The Sprinter Passenger Van delivers on all three, along with a level of protection only the technologically advanced Freightliner safety features can deliver.

SPRINTER PASSENGER

AVAILABLE IN 1500 & 2500 SERIES

TWO ROOF HEIGHTS

STANDARD ROOF

HIGH ROOF



Max: 102.8"

Max: 92.3"



Max: 114.2"

Max: 92.3"

TWO LENGTHS

144" WHEELBASE

170" WHEELBASE



233.5"

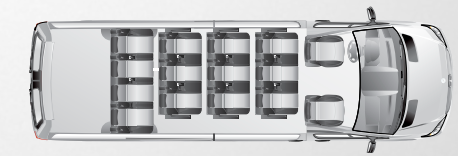
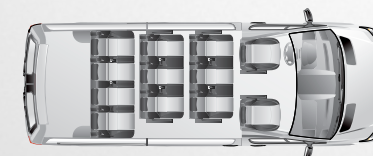


274.3"

TWO INTERIOR CONFIGURATIONS

12-PASSENGER (144" WHEELBASE)

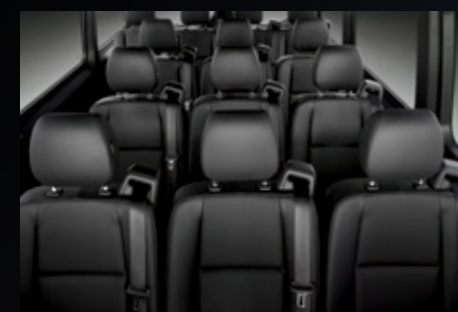
15-PASSENGER (170" WHEELBASE)^{*}



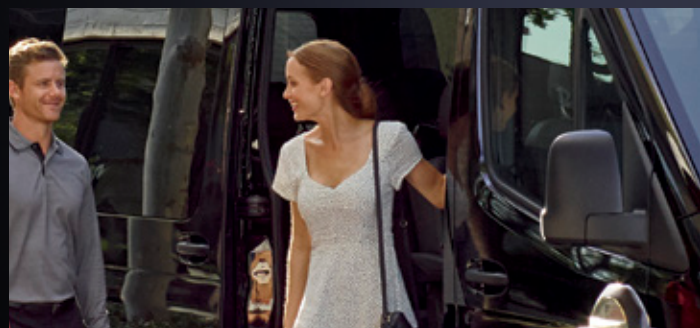
Roof air conditioning comes in two output levels, including a high-performance air conditioner.



The ergonomic rear seats have individual headrests and an available reclining option.



The Sprinter Passenger Van offers seating for up to 15 adults.^{*}



An impressive interior standing height of up to 6'3" provides greater passenger comfort with plenty of room to move.



The maximum 69.8" floor width and generous legroom mean there's plenty of room to sit and stretch out.

All measurements in inches. All width measurements include mirrors. See page 44 for a complete listing of models and specifications.

QUICK FACTS

- MAXIMUM PAYLOAD: 3,417 lbs.
- MAXIMUM TOWING CAPACITY:³⁴ 5,000 lbs.
- ENGINES: 2.0L 4-cylinder turbo gasoline,[†] 3.0L 6-cylinder turbo diesel¹¹
- TRANSMISSIONS: 9G-TRONIC 9-speed Automatic Transmission, 7G-TRONIC Plus 7-speed Automatic Transmission

- MAXIMUM CARGO VOLUME: 111.2 cu. ft.
- MAXIMUM INTERIOR STANDING HEIGHT: 75.5"
- STANDARD FRONT + REAR A/C
- SEATING CAPACITY: Up to 15^{*}

^{*}Seating for 15 available only on diesel model.
[†]Gasoline engine not available on all models. Available Summer 2020.

Don't let your business plans stall because you can't find the right vehicle. The Sprinter Cab Chassis/Cutaway is the place to make it happen. With a flat, unobstructed frame and two available wheelbases, it's the foundation you're looking for. To get your plans up and moving, a powerful and efficient V6 turbo diesel engine¹¹ with a 7G-TRONIC Plus 7-speed automatic transmission comes standard.



Choose between the standard 3500XD model (GVWR of 11,030 lbs.) or the 4500 model (GVWR of 12,125 lbs.) and build the Sprinter Cab Chassis/Cutaway that works best for you.

The Sprinter's flat, unobstructed frame rails are the perfect place to bring your vision of the ideal business vehicle to life.

LET'S BUILD IT.



SPRINTER CAB CHASSIS/CUTAWAY

AVAILABLE IN 3500XD & 4500 SERIES

ONE ROOF HEIGHT



TWO LENGTHS

144" WHEELBASE








170" WHEELBASE



All measurements in inches. All width measurements include mirrors. See page 46 for a complete listing of models and specifications.

QUICK FACTS

-  **MAXIMUM PAYLOAD:** 7,429 lbs.
-  **MAXIMUM TOWING CAPACITY:**³⁴ 7,500 lbs.
-  **ENGINE:** 3.0L 6-cylinder turbo diesel¹¹
-  **TRANSMISSION:** 7G-TRONIC Plus 7-speed Automatic Transmission
-  **SEATING CAPACITY:** Up to three

DIG IN, AND GET GOING.



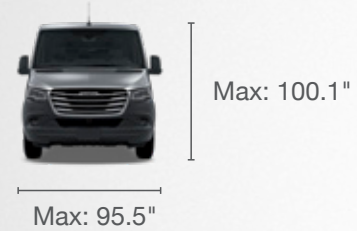
Whether you want to get to the job or get away for the weekend, we'll help you do it with an on-demand 4-wheel drive commercial van. Its higher wading depth, low-range gear, and torque-producing V6 turbo diesel engine¹¹ are all standard — and just what you need when bad weather and tough roads are against you.

SPRINTER CARGO 4X4

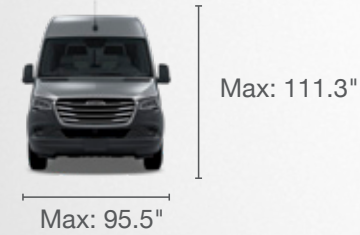
AVAILABLE IN 2500 & 3500XD SERIES

TWO ROOF HEIGHTS

STANDARD ROOF

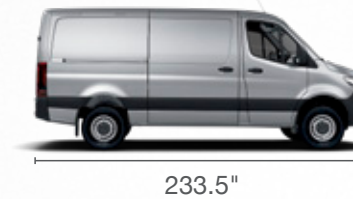


HIGH ROOF



THREE LENGTHS

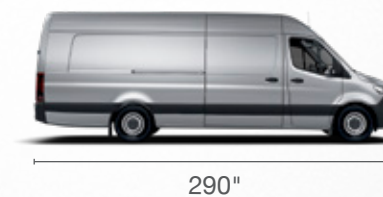
144" WHEELBASE



170" WHEELBASE



170" EXT. WHEELBASE



SPRINTER CREW 4X4

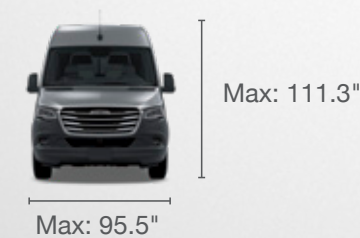
AVAILABLE IN 2500 & 3500XD SERIES

TWO ROOF HEIGHTS

STANDARD ROOF



HIGH ROOF



TWO LENGTHS

144" WHEELBASE



170" WHEELBASE



SPRINTER PASSENGER 4X4

AVAILABLE IN 2500 SERIES

TWO ROOF HEIGHTS

STANDARD ROOF



HIGH ROOF



ONE LENGTH

144" WHEELBASE



All measurements in inches. All width measurements include mirrors. A complete listing of models and specifications begins on page 40.

GET YOUR CONCEPT UP AND RUNNING.

You have a concept in mind — let a Freightliner Vans MasterUpfitter build it for you. Our job is to help you find a van that is ready to fit your ultimate conversion needs. With the Best-in-Class cargo volume of the Sprinter and the impressive 7,430 lbs. of payload of the Sprinter 4500 Cab Chassis/Cutaway, each Freightliner Van is a blank canvas on which you can create a design to meet your specific needs. Whether you are in need of a simple work van interior, a mobile veterinarian clinic, or the ultimate RV, Freightliner Vans is making you mobile and taking your business to new places.

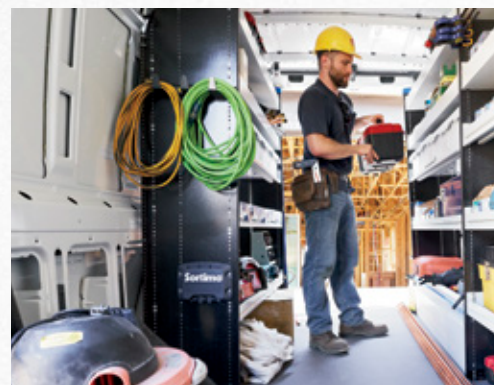
Qualified Upfitters adhere to the Upfitting Guidelines to become part of the Freightliner Vans MasterUpfitter network. These Upfitters are committed to the highest engineering standards and levels of customer satisfaction. Working with a MasterUpfitter gives you the flexibility to be creative and the assurance that Freightliner Vans is here to support your needs.

Find your MasterUpfitter today at www.upfitterportal.com/en-us/upfitters/locator

OTHERS DREAM IT. WE DO IT.

You're the expert in your trade, and your van is the tool with which to get the job done. MasterSolutions™³⁵ allows you to quickly configure your van and order directly via your Freightliner Vans dealer to get exactly the van you want right when you need it. It's time to start producing. Build your van now or get inspired by visiting www.freightlinersprinterusa.com/freightliner/master-solutions/customize

MasterSolutions™³⁵ providers Auto Truck, Knapheide, and Drivege bring you a portfolio of turnkey solutions for your specific line of business — HVAC, Plumbing, Electrical, Telecommunication, Contracting, Delivery, Refrigeration, Food Services, and People Moving — at a preferred price. These preconfigured solutions from industry-leading manufacturers are customized to fit your Freightliner Sprinter. The ordering process is streamlined and installation is simple: all MasterSolutions™³⁵ can be fitted directly as Ship-Thru right next to our factory in South Carolina, saving you time and ensuring seamless integration, quick delivery, and consistent quality.



SHIP-THRU



FINANCE SOLUTIONS.

Through Daimler Truck Financial, we offer a variety of financing products and solutions with flexible benefits tailored specifically to meet the needs of your business.³⁶

For more information, visit www.freightlinersprinterusa.com/freightliner/shopping-tools/finance-solutions

WE HAVE YOUR BACK.

VanCARE is a promise to our customers to deliver genuine parts, superior service, and unparalleled commitment to getting you back on the road as quickly as possible. We know that for you, it isn't a van — it's a tool you need to make a living.

For more information, visit www.freightlinersprinterusa.com/freightliner/auto-parts-and-services

RETAIL LOAN

These simple-interest, fixed-payment packages lock in interest rates and can include van and upfit equipment, as well as aftermarket products, in one contract.

FMV LEASE

A closed-end lease agreement is also known as a "walkaway lease," since the lessee can simply turn in the vehicle and walk away at lease maturity after meeting all contractual obligations, subject to certain return conditions and mileage restrictions.

TRAC LEASE³⁷

A Terminal Rental Adjustment Clause (TRAC) lease³⁷ doesn't require any acquisition fee, up-front payment, or excess mileage charges, and lease payments may be expensed against income. Owners are responsible for the residual value of the vehicle.

ROADSIDE ASSISTANCE³⁸

All Freightliner Sprinters come standard with our 24-hour Roadside Assistance Program³⁸ and expert advice 24/7 through the Daimler Customer Assistance Center, providing you peace of mind and help when you need it most.

ServiceCARE – Service solutions built for you

Whether it's a maintenance service, unexpected warranty work, or wear-and-tear repair, our ServiceCARE products offer customized solutions for you. You can now focus on your business with your vehicles always in top shape, minimizing your downtime and maximizing your financial cost control.



Complete
The all-inclusive service package

Service Repair Wear & Tear

If you require comprehensive additional protection for your van, look no further than our Complete product. This package covers all workshop work, including wear-and-tear repairs. The vehicle is ready for action when you need it, and you keep costs safely under control.



Extended Limited Warranty (ELW) Service Repair Wear & Tear
More warranty. More certainty.

The Extended Limited Warranty product offers you greater coverage for mechanical, electrical, and electronic components. It protects you against unforeseen repair costs, and without any deductibles you get the benefit of predictable and attractive conditions.



Maintenance (PPM) Service Repair Wear & Tear
Keeping your van in top shape

Regular and accurate checking of the most important vehicle parts and functions ensures that your van continues to deliver outstanding performance and reliability. Maintenance prevents unnecessary repair costs and keeps downtime minimal.

Term
3 years / 60K / 3 services
4 years / 80K / 4 services
5 years / 100K / 5 services

Term
5 years / 100,000 miles
6 years / 120,000 miles
7 years / 140,000 miles

Term
2 services / 3 years
4 services / 5 years
6 services / 7 years

Manufacturer Warranty Overview	3 year / 36K	5 year / 100K
New Vehicle Warranty	•	
Powertrain Warranty		•
Diesel Engine Limited Warranty		•
Federal Emissions Warranty Diesel		•

SPRINTER CREW Applies to all Sprinter models

	ENGINE	
	2.0L 4-Cylinder Turbo Gasoline Engine*	3.0L V6 Turbo Diesel
Configuration	DOHC	DOHC
Fuel injection	Direct	Direct
Induction system	Bosch Injection	Common-Rail-Direct-Injection
Cylinders	4	6
Cylinder heads	Aluminum	Aluminum
Block material	Aluminum	Aluminum
Bore/stroke	83.0 mm/92.0 mm	83.0 mm/92.0 mm
Compression ratio	9.8:1	18.0:1
Transmission	9G-TRONIC 9-Speed Automatic Transmission	7G-TRONIC Plus 7-Speed Automatic Transmission
Horsepower @ rpm	188 hp @ 5,000 rpm	188 hp @ 3,800 rpm
Torque: lb-ft @ rpm	258 lb-ft @ 2,500-3,500 rpm	325 lb-ft @ 1,400-2,400 rpm
Recommended fuel	Regular 87 Octane	B5 Diesel
Fuel tank capacity	22 gal	24.5 gal

STANDARD FEATURES

MECHANICAL			
Gasoline engine only	Diesel engine only	Gasoline and Diesel engines	
<ul style="list-style-type: none"> Engine: 2.0L 4-Cylinder Turbo Gasoline* 9G-TRONIC 9-Speed Automatic Transmission AGM battery 12V/70Ah Generator 14V/250A SULEV Emissions Service Interval: Up to 15,000 miles¹² 	<ul style="list-style-type: none"> Engine: 3.0L V6 Turbo Diesel 7G-TRONIC Plus 7-Speed Automatic Transmission Alternator 14V/220A 3rd Generation SCR Emission Control System ULEV/SULEV Emissions† Fuel Filter with Water Separator Service Interval: Up to 20,000 miles¹² 	<ul style="list-style-type: none"> Body Builder Connector Exhaust Straight to Rear Jump-Start Terminal Pre-installation for Switch Panel (not available on 4x4) 	<ul style="list-style-type: none"> Pre-installation PSM Pre-wiring for Trailer Hitch Remote Key (315 mhz) with Central Locking Starter Battery Disconnect
SEATING	EXTERIOR	INTERIOR	
<ul style="list-style-type: none"> Adjustable Driver Seat Adjustable Front Passenger Seat Armrest for Driver Seat Armrest for Front Passenger Seat Fabric, Maturin Black 	<ul style="list-style-type: none"> Dual-Circuit 4-Wheel Disc Brakes Front and Rear Mudflaps Rear Doors Opening to Side-Wall (Optional on 144" & 170" models) Red Diesel Filler Cap (Diesel only) Windshield with Filter Band 	<ul style="list-style-type: none"> Adjustable Steering Wheel (Angle) Air Conditioning, Front Communication Module (LTE) for Digital Services Cupholder, Front Heater, Auxiliary Electric Hot Air Jack, Hydraulic KEYLESS START 	<ul style="list-style-type: none"> Outside Temperature Gauge Shelf Above Windshield Speedometer, mph Standard Radio Storage Compartment Underneath Cockpit USB-C Socket, 5V
TIRES & WHEELS	SAFETY & SECURITY		
<ul style="list-style-type: none"> All-Season Tires Unspecified Tire Brand 	<ul style="list-style-type: none"> 4-Wheel Anti-Lock Braking System (ABS) Airbag, Driver/Passenger Front Breakdown Management Crosswind Assist⁸ 	<ul style="list-style-type: none"> Emergency Call System Headlight Assistant Hill Start Assist HOLD Function 	<ul style="list-style-type: none"> Load-Adaptive Electronic Stability Program (ESP)⁹ Seat Belt Reminder, Driver/Passenger Thorax-Pelvis Side Airbags, Driver/Passenger Window Side Airbags, Driver/Passenger

*Gasoline engine not available on all models. Available Summer 2020.
¹ULEV Emissions below 10,000 lbs.
²SULEV Emissions above 10,000 lbs.

SPRINTER MODEL OVERVIEW

Body Length	Roof Heights	1500 Model	2500 Model	3500 Model	3500XD Model	4500 Model	
CARGO VAN	STANDARD (144")	STANDARD ROOF					
		HIGH ROOF					
	LONG (170")	HIGH ROOF					
		HIGH ROOF					
CREW VAN	STANDARD (144")	STANDARD ROOF					
		HIGH ROOF					
	LONG (170")	HIGH ROOF					
PASSENGER VAN	STANDARD (144") 12-PASSENGER	STANDARD ROOF					
		HIGH ROOF					
	LONG (170") 15-PASSENGER	HIGH ROOF					
CAB CHASSIS/CUTAWAY	STANDARD (144")	STANDARD ROOF					
	LONG (170")	STANDARD ROOF					

G Gas engine available
D Diesel engine available 4x4 available only with diesel engine.

SPRINTER CARGO



ADDITIONAL STANDARD FEATURES (CARGO)	1500	2500	3500	3500XD	4500	1500	2500	3500	3500XD	4500	1500	2500	3500	3500XD	4500	
MECHANICAL																
• Aux. fuel-sending unit with fuel tap*	X	X	X	X	X	• Cable duct – side-wall	X	X	X	X	X	• Stabilization Level I	X	X		
• Axle ratio 3.923*		X				• Front axle reinforced				X		• Stabilization Level II			X	X
• Axle ratio 4.182 (standard on 2500 gas models only)	X	X	X	X	X	• Omission bulkhead	X	X	X	X	X	• Tire pressure monitoring lamp	X	X		
• Cable duct – rear portal	X	X	X	X	X											
INTERIOR																
• Interior lights, cargo compartment	X	X	X	X	X	• Wood floor deletion	X	X	X	X	X					
EXTERIOR						TIRES & WHEELS					TIRES & WHEELS (CONTINUED)					
• 3rd brake light	X	X	X	X	X	• 5.5 J x 16 steel wheels			X	X	X	• Tires LT 215/85 R16			X	X
• High roof		X				• 6.5 J x 16 steel wheels	X	X				• Tires LT 245/75 R16	X	X		
• Rear doors, 180° opening	X	X	X	X	X	• Dual rear-wheel tires			X	X	X	SAFETY & SECURITY				
• Rear mudflaps	X	X	X	X	X	• Spare wheel	X	X	X	X	X	• Longitudinal member reinforcement	X	X	X	X
• Sliding door, passenger side	X	X	X	X	X	• Spare wheel bracket below frame	X	X	X	X	X	• Rearview camera (rearview mirror display)	X	X	X	X
OPTIONAL FEATURES (CARGO)																
MECHANICAL																
• 12V power outlet, rear compartment	X	X	X	X	X	• AGM battery 12V 95Ah 850A	X	X	X	X	X	• Front axle reinforced (standard on 4500 model)	X	X	X	X
• 115V socket	X	X	X	X	X	• Axle ratio 3.923*			X	X	X	• Fuel gauge, optimized for aux. fuel tap*	X	X	X	X
• Additional bar for driveshaft & exhaust extension	X	X	X	X	X	• Axle ratio 4.182 (optional on 2500 diesel models only)		X				• Misfueling prevention for diesel	X	X	X	X
• Additional battery for retrofit consumers, driver seat base	X	X	X	X	X	• Backup alarm	X	X	X	X	X	• Omission of D-rings	X	X	X	X
• Additional battery for retrofit consumers, engine compartment	X	X	X	X	X	• Cruise control	X	X	X	X	X	• Parametric Special Module (PSM)	X	X	X	X
• Additional DIN-slots	X	X	X	X	X	• Cutoff relay for additional battery	X	X	X	X	X	• Speed limitation, 65 mph (standard on 4500 models)	X	X	X	X
						• Deactivation lamp monitoring failure	X	X	X	X	X	• Stabilization Level II	X	X		
						• Electric parking brake	X	X				• Suspension for comfort & load protection	X	X		
						• Engine oil level display at cold start*	X	X	X	X	X	• Top speed limitation, 75 mph	X	X	X	X
SEATING																
• Artico Man-made Leather Black	X	X	X	X	X	• Heated driver seat	X	X	X	X	X	• Heated front passenger seat	X	X	X	X
• Fabric, Caluma Black	X	X	X	X	X											
INTERIOR																
• 2nd row, fixed window, driver side	X	X	X	X	X	• Door sill – protective edge	X	X	X	X	X	• Optional 3-button keys	X	X	X	X
• 2nd row, fixed window, passenger side	X	X	X	X	X	• Electrically heated windshield	X	X	X	X	X	• Overhead storage slot, front center	X	X	X	X
• Acoustic Package	X	X	X	X	X	• Fixed sunroof (rear roof section)	X	X	X	X	X	• Pallet support in sliding door step	X	X	X	X
• Assist handle, B-pillar	X	X	X	X	X	• Floor covering, plastic	X	X	X	X	X	• Rear cabin heater & vents	X	X	X	X
• Assist handle, left rear door	X	X	X	X	X	• Fuel-fired heater booster (17,000 BTU)*	X	X	X	X	X	• Rear doors, opening to side-wall	X	X	X	X
• Assist handle, right rear door	X	X	X	X	X	• Fuel-fired pre-heater/booster (17,000 BTU)*	X	X	X	X	X	• Rear heater prep	X	X	X	X
• Cab rear-wall liner	X	X	X	X	X	• Half height load compartment trim	X	X	X	X	X	• Rear window defroster	X	X	X	X
• Cargo lashing rails, head height	X	X	X	X	X	• Heat insulation, front compartment	X	X	X	X	X	• Roof fan, electric	X	X	X	X
• Cargo partition	X	X	X	X	X	• Heat insulation, rear compartment	X	X	X	X	X	• Satellite radio	X	X	X	X
• Cargo partition with one window	X	X	X	X	X	• Hinged lid for storage compartment	X	X	X	X	X	• Shelving prep	X	X	X	X
• Cargo straps, D-rings ³³	X	X	X	X	X	• Illuminated front exits	X	X	X	X	X	• Side-wall paneling full hardboard	X	X	X	X
• Cargo straps, lashing rails ³³	X	X	X	X	X	• Instrument cluster with color display	X	X	X	X	X	• Side-wall paneling, waist-height PVC	X	X	X	X
• Charging Package, dashboard	X	X	X	X	X	• Keys, two additional master	X	X	X	X	X	• Storage compartment above cabin			X	X
• Cigarette lighter & ash cup, front	X	X	X	X	X	• Lashing rails, floor-level (plus four anchors)	X	X	X	X	X	• THERMOTRONIC automatic climate control	X	X	X	X
• Coat hooks in driver cabin	X	X	X	X	X	• Lashing rails, waist-level	X	X	X	X	X	• Tray for smartphones incl. wireless charging	X	X	X	X
• DEF fluid filler cap – lockable	X	X	X	X	X	• Light/motion sensor in rear compartment	X	X	X	X	X	• Wood floor with six D-rings ³³	X	X	X	X
• Door-mounted assist handle, driver & passenger	X	X	X	X	X	• Multifunction steering wheel	X	X	X	X	X					
EXTERIOR						TIRES & WHEELS										
• Black tinting (90%) for rear windows	X	X	X	X	X	• Heated rear window(s) with washers/wipers	X	X	X	X	X	• 285/65 R16 C SUPER-SINGLE-TIRES (Super Single)			X	X
• Bumpers, front/rear, primed	X	X	X	X	X	• High roof (standard on 3500)	X	X	X	X	• Light-alloy wheels 6.5 J x 16	X	X			
• Bumper step, rear, Grey	X	X	X	X	X	• Mounting rails for roof rack	X	X	X	X	X	• Loadable wheel arch	X	X		
• Bumper step, rear, spring-loaded*†	X	X	X			• Opening limiter, electrically operated sliding door	X	X	X	X	X	• M+S winter tires	X	X	X	X
• Deletion of model badge, right rear door	X	X	X	X	X	• Painted metallic front & rear bumper	X	X	X	X	X	• Rims painted Arctic White	X	X	X	X
• Deletion of Sprinter badge, left rear door	X	X	X	X	X	• Primed side moldings	X	X	X	X	X	• Rims painted Jet Black	X	X	X	X
• Elec. closing assist, left sliding door (soft close)	X	X	X	X	X	• Sliding door, driver side	X	X	X	X	X	• Spare tire carrier deletion	X	X	X	X
• Elec. closing assist, right sliding door (soft close)	X	X	X	X	X	• Sliding door, right-side deletion	X	X	X	X	X	• Spare wheel deletion	X	X	X	X
• Electric sliding door, right	X	X	X	X	X	• Sliding door, two-stage opening	X	X	X	X	X	• Steel wheels: 8.5 J x 16 Rr; 6.5 J x 16 Fr (Super Single)			X	X
• Electric sliding step	X	X	X	X	X	• Step, wide, at rear end	X	X	X	X	X	• Tire Brand Continental	X	X	X	X
• Electrically folding exterior mirrors	X	X	X			• Trailer crossmember, 7,500-lb. capacity	X	X	X	X	X	• Tire Brand Kumho	X	X	X	X
• Fixed window center, left	X	X	X	X	X	• Trailer hitch, 5,000 lbs. (available only for 170" EXT on 3500, 3500XD & 4500 models)	X	X	X	X	X	• Tire Brand Michelin**	X	X	X	X
• Fixed window center, right	X	X	X	X	X	• Windows in rear doors	X	X	X	X	X	• Wheel chocks	X	X	X	X
• Half-sided step, rear (for trailer hitch)	X	X	X	X	X						• Wheelhouse covering	X	X	X	X	
SAFETY & SECURITY						OPTIONAL PACKAGES					OPTIONAL PACKAGES (CONTINUED)					
• Active Distance Assist DISTRONIC ^{®2}	X	X	X	X	X	• Bench Seat Package	X	X	X	X	X	• Heavy-Duty-Cargo Protection Package	X	X	X	X
• Blind Spot Assist ⁵	X	X	X	X	X	• Cargo Convenience Package	X	X	X	X	X	• Premium Package	X	X	X	X
• Emergency flashlight	X	X	X	X	X	• Cargo Protection Package	X	X	X	X	X	• Premium Plus Package	X	X	X	X
• First-aid kit	X	X	X	X	X	• Comfort Package	X	X	X	X	X	• Swivel Seat Package	X	X	X	X
• Fog lamp with cornering light function	X	X	X	X	X	• Comfort Package (seat addition)	X	X	X	X	X					
• Parking Package	X	X	X	X	X	• Comfort Plus Package	X	X	X	X	X					
• Parking Package with 360° camera	X	X	X	X	X	• DISTRONIC [®] Addition Premium Package	X	X	X	X	X					
• Security alarm with interior motion sensor	X	X	X	X	X	• Driver Convenience Package	X	X	X	X	X					
						• Exterior Lighting Package	X	X	X	X	X					

*Not available with gasoline engine.
 **Delayed availability on 3500, 3500XD, and 4500 models.
 †Not available with 4x4.

For a complete listing of features included in each package, build your van at freightlinersprinterusa.com

SPRINTER CREW



ADDITIONAL STANDARD FEATURES (CREW)	2500	3500	3500XD	4500	2500	3500	3500XD	4500	2500	3500	3500XD	4500		
MECHANICAL														
• Aux. fuel-sending unit with fuel tap	X	X	X	X	• Omission bulkhead	X	X	X	X	• Stabilization Level II	X	X	X	
• Axle ratio 3.923*		X			• Stabilization Level I	X	X	X	X	• Tire pressure monitoring lamp	X	X	X	
• Axle ratio 4.182 (standard on 2500 gas models only)	X	X	X	X	• Front axle reinforced	X	X	X	X					
• Front axle reinforced	X	X	X	X										
SEATING														
• Aisle-side armrest	X	X	X	X	• Three-seater bench in passenger compartment, 1st row (narrow); includes ISOFIX	X	X	X	X	• Wall-side armrest	X	X	X	
INTERIOR														
• Assist handle, B-pillar	X	X	X	X	• Half height load compartment trim	X	X	X	X	• Storage compartment with net in rear doors	X	X	X	
• Black tinting (90%) for rear windows	X	X	X	X	• Interior lights, cargo compartment	X	X	X	X	• Warm/cool air duct to rear compartment	X	X	X	
• Cupholders, front	X	X	X	X	• Rear window defroster	X	X	X	X	• Wheelhouse covering	X	X	X	
• Floor covering, plastic	X	X	X	X	• Roof trim	X	X	X	X	• Windows in rear doors	X	X	X	
EXTERIOR					TIRES & WHEELS					TIRES & WHEELS (CONTINUED)				
• 2nd row, fixed window, driver side	X	X	X	X	• 5.5 J x 16 steel wheels		X	X	X	• Tires LT 215/85 R16		X	X	
• 2nd row, fixed window, passenger side	X	X	X	X	• 6.5 J x 16 steel wheels	X				• Tires LT 245/75 R16	X			
• 3rd brake light	X	X	X	X	• Dual rear-wheel tires		X	X	X					
• High roof	X	X	X	X	• Spare wheel	X	X	X	X					
• Laminated glass, rear	X	X	X	X	• Spare wheel bracket below frame	X	X	X	X					
• Rear doors, 180° opening	X	X	X	X										
• Rear mudflaps	X	X	X	X										
• Sliding door, passenger side	X	X	X	X										
SAFETY & SECURITY														
• Longitudinal member reinforcement	X	X	X	X	• Rearview camera (rearview mirror display)	X	X	X	X					
OPTIONAL FEATURES (CREW)														
MECHANICAL														
• Additional bar for driveshaft & exhaust extension	X	X	X	X	• Axle ratio 3.923*			X	X	X	• Front axle reinforced (standard on 4500 model)*	X	X	X
• Additional battery for retrofit consumers, co-driver seat base	X	X	X	X	• Axle ratio 4.182 (standard on 2500 gas models)	X	X	X	X	• Parametric Special Module (PSM)	X	X	X	
					• Cruise control	X	X	X	X	• Rear spring vibration absorbers	X			
• Additional battery for retrofit consumers, engine compartment	X	X	X	X	• Cutoff relay for additional battery	X	X	X	X	• Speed limitation, 65 mph (standard on 4500 model)	X	X	X	
					• Deactivation lamp monitoring failure	X	X	X	X	• Stabilization Level II	X			
• Additional DIN-slots	X	X	X	X	• Electric parking brake	X				• Suspension for comfort & load protection	X			
• AGM battery 12V 95Ah 850A	X	X	X	X	• Engine oil level display at cold start*	X	X	X	X	• Top speed limitation, 75 mph	X	X	X	
SEATING														
• Artico Man-made Leather Black	X	X	X	X	• Heated driver seat	X	X	X	X	• Heated front passenger seat	X	X	X	
• Fabric, Caluma Black	X	X	X	X										
INTERIOR														
• 12V power outlet, rear compartment	X	X	X	X	• Half-sided step, rear (for trailer hitch)	X	X	X	X	• Optional 3-button keys	X	X	X	
• 115V socket	X	X	X	X	• Heat insulation, front compartment	X	X	X	X	• Overhead storage slot, front center	X	X	X	
• Acoustic Package	X	X	X	X	• Heat insulation, rear compartment	X	X	X	X	• Painted metallic front & rear bumper	X	X	X	
• Assist handle														

SPRINTER CARGO



TECHNICAL SPECIFICATIONS: 1500 CARGO, 2500 & 3500

Tires	1500		2500								3500									
	Single		Single								Dual Rear Wheel				Super Single					
Wheelbase	144"		144"				170"				170" EXT				144"			170" EXT		
Engine	Gas	Gas	Gas/Diesel	Diesel	Gas/Diesel	Diesel	Gas/Diesel	Diesel	Diesel	Diesel	Diesel	Diesel	Diesel	Diesel	Diesel	Diesel	Diesel			
Drivetrain	4x2	4x2	4x2	4x4	4x2	4x4	4x2	4x4	4x2	4x4	4x2	4x4	4x2	4x4	4x2	4x4	4x2			
Roof height	Standard Roof	High Roof	Standard Roof	Standard Roof	High Roof	High Roof	High Roof	High Roof	High Roof	High Roof	Standard Roof	High Roof	High Roof	High Roof	High Roof	High Roof	High Roof			
Passenger capacity	2-3	2-3	2-3	2-3	2-3	2-3	2-3	2-3	2-3	2-3	2-3	2-3	2-3	2-3	2-3	2-3	2-3			
Rows of seats	One	One	One	One	One	One	One	One	One	One	One	One	One	One	One	One	One			

EXTERIOR																	
Length	233.5"	233.5"	233.5"	233.5"	233.5"	233.5"	274.3"	274.3"	290.0"	290.0"	233.5"	233.5"	274.3"	290.0"	233.5"	274.3"	290.0"
Height	96.3"	107.5"	96.3"	100.1"	107.5"	111.3"	107.3"	110.9"	107.0"	110.5"	96.4"	109.1"	108.7"	108.4"	109.4"	109.1"	108.7"
Width - excluding mirrors	79.5"	79.5"	79.5"	79.5"	79.5"	79.5"	79.5"	79.5"	79.5"	79.5"	79.5"	79.5"	79.5"	79.5"	79.5"	79.5"	79.5"
Width - including mirrors	92.3"	92.3"	92.3"	92.3"	92.3"	92.3"	92.3"	92.3"	92.3"	92.3"	95.5"	92.3"	92.3"	92.3"	92.3"	92.3"	92.3"
Tire track, front	67.2"	67.2"	67.2"	67.8"	67.2"	67.8"	67.2"	67.8"	67.2"	67.8"	66.5"	66.5"	66.5"	66.5"	67.2"	67.2"	67.2"
Tire track, rear	68.2"	68.2"	68.2"	68.2"	68.2"	68.2"	68.2"	68.2"	68.2"	68.2"	60.7"	60.7"	60.7"	60.7"	65.2"	65.2"	65.2"
Front overhang BA	40.2"	40.2"	40.2"	40.2"	40.2"	40.2"	40.2"	40.2"	40.2"	40.2"	40.2"	40.2"	40.2"	40.2"	40.2"	40.2"	40.2"
Rear overhang (rear axle to end of frame)	49.1"	49.1"	49.1"	49.1"	49.1"	49.1"	63.8"	63.8"	79.6"	79.6"	49.1"	49.1"	63.8"	79.6"	49.1"	63.8"	79.6"
Load height, unloaded (ground to cargo floor)	27.5"	27.4"	27.7"	31.5"	27.6"	31.4"	27.5" [ⓐ]	31.1"	27.2"	30.6"	TBD	28.5"	28.1"	27.7"	29.5"	29.2"	28.9"
							27.4" [ⓑ]										
Load height, loaded (ground to cargo floor)	23.3"	23.4"	23.4"	26.8"	23.4"	26.8"	23.4"	26.8"	23.5"	26.8"	TBD	23.2"	23.2"	23.3"	25.1"	25.2"	25.4"
Side-door opening height	59.8"	71.6"	59.8"	59.8"	71.6"	71.6"	71.6"	71.6"	71.6"	71.6"	59.8"	71.6"	71.6"	71.6"	71.6"	71.6"	71.6"
Side-door opening width - sliding	51.0"	51.0"	51.0"	51.0"	51.0"	51.0"	51.0"	51.0"	51.0"	51.0"	49.3"	51.0"	51.0"	51.0"	51.0"	51.0"	51.0"
Rear cargo door opening height	61.0"	72.7"	61.0"	61.0"	72.7"	72.7"	72.7"	72.7"	72.7"	72.7"	61.0"	72.7"	72.7"	72.7"	72.7"	72.7"	72.7"
Rear cargo door opening width	61.2"	61.2"	61.2"	61.2"	61.2"	61.2"	61.2"	61.2"	61.2"	61.2"	60.7"	61.2"	61.2"	61.2"	61.2"	61.2"	61.2"
Turning radius (curb-to-curb)	40.7'	40.7'	40.7'	43.3'	40.7'	43.3'	47.2'	50.2'	47.2'	50.2'	45.3'	45.3'	52.5'	52.5'	45.3'	52.5'	52.5'
Ground to first step-side	20.9"	20.8"	20.9"	24.8"	20.8"	24.7"	20.4"	24.2"	20.4"	24.1"	21.6"	21.6"	20.9"	20.8"	21.4"	20.7"	20.6"

INTERIOR																	
Headroom (1st row)	47.3"	56.4"	47.3"	47.3"	56.4"	56.4"	56.4"	56.4"	56.4"	56.4"	47.3"	56.4"	56.4"	56.4"	56.4"	56.4"	56.4"
Shoulder room (1st row)	67.4"	67.4"	67.4"	67.4"	67.4"	67.4"	67.4"	67.4"	67.4"	67.4"	67.4"	67.4"	67.4"	67.4"	67.4"	67.4"	67.4"
Hip room (1st row)	63.7"	63.7"	63.7"	63.7"	63.7"	63.7"	63.7"	63.7"	63.7"	63.7"	63.7"	63.7"	63.7"	63.7"	63.7"	63.7"	63.7"
Legroom (1st row)	38.9"	38.9"	38.9"	38.9"	38.9"	38.9"	38.9"	38.9"	38.9"	38.9"	38.9"	38.9"	38.9"	38.9"	38.9"	38.9"	38.9"
Cargo length, front (at floor)	132.9"	132.9"	132.9"	132.9"	132.9"	132.9"	173.6"	173.6"	189.4"	189.4"	103.5"	132.9"	173.6"	189.4"	132.9"	173.6"	189.4"
Cargo length, front (at belt)	128.8"	128.8"	128.8"	128.8"	128.8"	128.8"	169.6"	169.6"	185.3"	185.3"	93.1"	128.8"	169.6"	185.3"	128.8"	169.6"	185.3"
Cargo width between wheelhouses	53.2"	53.2"	53.2"	53.2"	53.2"	53.2"	53.2"	53.2"	53.2"	53.2"	38.5"	38.5"	38.5"	38.5"	48.4"	48.4"	48.4"
Cargo height, maximum (with trim)	TBD	TBD	TBD	TBD	TBD	TBD	TBD	TBD	TBD	TBD	TBD	TBD	TBD	TBD	TBD	TBD	TBD
Cargo height, maximum (without trim)	67.7"	79.1"	67.7"	67.7"	79.1"	79.1"	79.1"	79.1"	79.1"	79.1"	64.1"	79.1"	79.1"	79.1"	79.1"	79.1"	79.1"
Maximum floor width	70.4"	70.4"	70.4"	70.4"	70.4"	70.4"	70.4"	70.4"	70.4"	70.4"	70.4"	70.4"	70.4"	70.4"	70.4"	70.4"	70.4"
Interior standing height	67.7"	79.1"	67.7"	67.7"	79.1"	79.1"	79.1"	79.1"	79.1"	79.1"	65.3"	79.1"	79.1"	79.1"	79.1"	79.1"	79.1"

CARGO CAPACITY																	
Cargo volume (behind last row of seats)	319.0 cu. ft.	372.8 cu. ft.	319.0 cu. ft.	319.0 cu. ft.	372.8 cu. ft.	372.8 cu. ft.	488.1 cu. ft.	488.1 cu. ft.	532.6 cu. ft.	532.6 cu. ft.	222.5 cu. ft.	328.5 cu. ft.	430.1 cu. ft.	469.4 cu. ft.	358.4 cu. ft.	469.2 cu. ft.	512.1 cu. ft.
Maximum roof load	660 lbs.	330 lbs.	660 lbs.	660 lbs.	330 lbs.	330 lbs.	330 lbs.	330 lbs.	330 lbs.	330 lbs.	660 lbs.	330 lbs.	330 lbs.	330 lbs.	300 lbs.	330 lbs.	330 lbs.
Maximum available GCWR	13,550 lbs.	13,550 lbs.	13,930 lbs.	13,930 lbs.	13,930 lbs.	13,930 lbs.	13,930 lbs.	13,930 lbs.	13,930 lbs.	13,930 lbs.	15,250 lbs.	15,250 lbs.	15,250 lbs.	15,250 lbs.	15,250 lbs.	15,250 lbs.	15,250 lbs.

MAXIMUM CAPABILITIES																	
Maximum payload	3,920 lbs.	3,920 lbs.	4,420 lbs. [ⓐ]	3,825 lbs.	4,420 lbs. [ⓐ]	3,825 lbs.	4,012 lbs. [ⓐ]	3,417 lbs.	3,649 lbs.	3,318 lbs.	TBD	4,488 lbs.	4,135 lbs.	4,058 lbs.	4,488 lbs.	4,135 lbs.	4,058 lbs.
			4,167 lbs. [ⓑ]		4,167 lbs. [ⓑ]		3,759 lbs. [ⓑ]										
Maximum towing**	5,000 lbs.	5,000 lbs.	5,000 lbs.	5,000 lbs.	5,000 lbs.	5,000 lbs.	5,000 lbs.	5,000 lbs.	5,000 lbs.	5,000 lbs.	7,500 lbs.	7,500 lbs.	7,500 lbs.	7,500 lbs.	7,500 lbs.	7,500 lbs.	7,500 lbs.
GVWR	8,550 lbs.	8,550 lbs.	9,050 lbs.	9,050 lbs.	9,050 lbs.	9,050 lbs.	9,050 lbs.	9,050 lbs.	9,050 lbs.	9,050 lbs.	9,900 lbs.	9,900 lbs.	9,900 lbs.	9,900 lbs.	9,900 lbs.	9,900 lbs.	9,900 lbs.
TWR (maximum loaded trailer weight ratings)	500 lbs.	500 lbs.	500 lbs.	500 lbs.	500 lbs.	500 lbs.	500 lbs.	500 lbs.	500 lbs.	500 lbs.	749.6 lbs.	750 lbs.	750 lbs.	500 lbs.	750 lbs.	750 lbs.	500 lbs.

SPRINTER CARGO



TECHNICAL SPECIFICATIONS: 3500XD CARGO & 4500

Tires	3500XD											4500					
	Dual Rear Wheel				Super Single				Dual Rear Wheel			Dual Rear Wheel					
Wheelbase	144"				170"				144"			170" EXT					
Engine	Diesel	Diesel	Diesel	Diesel	Diesel	Diesel	Diesel	Diesel	Diesel	Diesel	Diesel	Diesel	Diesel	Diesel	Diesel	Diesel	Diesel
Drivetrain	4x2	4x4	4x2	4x4	4x2	4x4	4x2	4x4	4x2	4x4	4x2	4x2	4x2	4x2	4x2	4x2	4x2
Roof height	Standard Roof	Standard Roof	High Roof	High Roof	High Roof	High Roof	High Roof	High Roof	High Roof	High Roof	High Roof	High Roof	High Roof	High Roof	High Roof	High Roof	High Roof
Passenger capacity	2-3	2-3	2-3	2-3	2-3	2-3	2-3	2-3	2-3	2-3	2-3	2-3	2-3	2-3	2-3	2-3	2-3
Rows of seats	One	One	One	One	One	One	One	One	One	One	One	One	One	One	One	One	One

EXTERIOR																	
Length	233.5"	233.5"	233.5"	233.5"	274.3"	274.3"	290.0"	290.0"	233.5"	274.3"	290.0"	233.5"	233.5"	274.3"	290.0"	233.5"	290.0"
Height	97.9"	100.1"	109.1"	111.2"	108.7"	110.9"	108.4"	110.6"	109.1"	109.1"	108.7"	97.8"	108.9"	108.5"	108.2"	97.8"	108.2"
Width - excluding mirrors	79.5"	79.5"	79.5"	79.5"	79.5"	79.5"	79.5"	79.5"	79.5"	79.5"	79.5"	79.5"	79.5"	79.5"	79.5"	79.5"	79.5"
Width - including mirrors	95.5"	95.5"	95.5"	95.5"	95.5"	95.5"	95.5"	95.5"	95.5"	95.5"	95.5"	95.5"	95.5"	95.5"	95.5"	95.5"	95.5"
Tire track, front	66.5"	66.8"	66.5"	TBD	66.5"	66.8"	66.5"	66.8"	66.5"	66.8"	66.5"	66.0"	66.0"	66.0"	66.0"	66.0"	66.0"
Tire track, rear	60.7"	60.7"	60.7"	TBD	60.7"	60.7"	60.7"	60.7"	60.7"	60.7"	60.7"	60.7"	60.7"	60.7"	60.7"	60.7"	60.7"
Front overhang BA	40.2"	40.2"	40.2"	40.2"	40.2"	40.2"	40.2"	40.2"	40.2"	40.2"	40.2"	40.2"	40.2"	40.2"	40.2"	40.2"	40.2"
Rear overhang (rear axle to end of frame)	49.1"	49.1"	49.1"	49.1"	63.8"	63.8"	79.6"	79.6"	49.1"	63.8"	79.6"	49.1"	49.1"	63.8"	79.6"	49.1"	79.6"
Load height, unloaded (ground to cargo floor)	29.3"	30.7"	29.2"	TBD	28.9"	30.3"	28.5"	29.8"	TBD	29.2"	28.9"	29.1"	TBD	28.7"	28.3"	29.1"	28.3"
Load height, loaded (ground to cargo floor)	24.5"	24.9"	24.5"	TBD	24.6"	24.8"	24.7"	24.7"	TBD	24.6"	24.8"	24.5"	TBD	24.6"	24.7"	24.5"	24.7"
Side-door opening height	59.8"	59.8"	71.6"	71.6"	71.6"	71.6"	71.6"	71.6"	71.6"	71.6"	59.8"	71.6"	71.6"	71.6"	71.6"	59.8"	71.6"
Side-door opening width - sliding	51.0"	51.0"	51.0"	51.0"	51.0"	51.0"	51.0"	51.0"	51.0"	51.0"	49.3"	51.0"	51.0"	51.0"	51.0"	51.0"	51.0"
Rear cargo door opening height	61.0"	61.0"	72.7"	72.7"	72.7"	72.7"	72.7"	72.7"	72.7"	72.7"	61.0"	72.7"	72.7"	72.7"	72.7"	61.0"	72.7"
Rear cargo door opening width	61.2"	61.2"	61.2"	61.2"	61.2"	61.2"	61.2"	61.2"	61.2"	61.2"	60.7"	61.2"	61.2"	61.2"	61.2"	61.2"	61.2"
Turning radius (curb-to-curb)	45.3'	43.3'	45.3'	43.3'	52.5'	50.2'	52.5'	50.2'	45.3'	52.5'	52.5'						

SPRINTER CREW



TECHNICAL SPECIFICATIONS: 2500 & 3500

Tires	2500						3500			
	Single						Dual Rear Wheel		Super Single	
Wheelbase	144"						144"	170"	144"	170"
Engine	Gas/Diesel	Diesel	Gas/Diesel	Diesel	Gas/Diesel	Diesel	Diesel	Diesel	Diesel	Diesel
Drivetrain	4x2	4x4	4x2	4x4	4x2	4x4	4x2	4x2	4x2	4x2
Roof height	Standard Roof	Standard Roof	High Roof	High Roof	High Roof	High Roof	High Roof	High Roof	High Roof	High Roof
Passenger capacity	5	5	5	5	5	5	5	5	5	5
Rows of seats	Two	Two	Two	Two	Two	Two	Two	Two	Two	Two

EXTERIOR										
Length	233.5"	233.5"	233.5"	233.5"	274.3"	274.3"	233.5"	274.3"	233.5"	274.3"
Height	96.3"	100.1"	107.5"	111.3"	107.3"	111.3"	109.1"	108.7"	109.4"	109.1"
Width - excluding mirrors	79.5"	79.5"	79.5"	79.5"	79.5"	79.5"	79.5"	79.5"	79.5"	79.5"
Width - including mirrors	92.3"	92.3"	92.3"	92.3"	92.3"	92.3"	92.3"	92.3"	92.3"	92.3"
Tire track, front	67.2"	67.8"	67.2"	67.8"	67.2"	67.8"	66.5"	66.5"	67.2"	67.2"
Tire track, rear	68.2"	68.2"	68.2"	68.2"	68.2"	68.2"	60.7"	60.7"	65.2"	65.2"
Front overhang BA	40.2"	40.2"	40.2"	40.2"	40.2"	40.2"	40.2"	40.2"	40.2"	40.2"
Rear overhang (rear axle to end of frame)	49.1"	49.1"	49.1"	49.1"	63.8"	63.8"	49.1"	63.8"	49.1"	63.8"
Load height, unloaded (ground to cargo floor)	27.5" G	31.5"	27.4" G	31.4"	27.3" G	31.1"	28.5"	28.1"	28.5"	28.1"
	27.7" D		27.6" D		27.4" D					
Load height, loaded (ground to cargo floor)	23.3"	26.8"	23.3"	26.8"	23.4"	26.8"	23.2"	23.2"	23.2"	23.2"
Side-door opening height	59.8"	59.8"	71.6"	71.6"	71.6"	71.6"	71.6"	71.6"	71.6"	71.6"
Side-door opening width - sliding	49.3"	49.3"	51.0"	51.0"	51.0"	51.0"	51.0"	51.0"	51.0"	51.0"
Rear cargo door opening height	61.0"	61.0"	72.7"	72.7"	72.7"	72.7"	72.7"	72.7"	72.7"	72.7"
Rear cargo door opening width	60.7"	60.7"	61.2"	61.2"	61.2"	61.2"	61.2"	61.2"	61.2"	61.2"
Turning radius (curb-to-curb)	40.7'	43.3'	40.7'	43.3'	47.2'	50.2'	45.3'	52.5'	45.3'	52.5'
Ground to first step-side	20.9"	24.8"	20.8"	24.7"	20.4"	24.2"	21.6"	20.9"	21.6"	20.9"

INTERIOR										
Headroom (1st row)	47.3"	47.3"	56.4"	56.4"	56.4"	56.4"	56.4"	56.4"	56.4"	56.4"
Shoulder room (1st row)	67.4"	67.4"	67.4"	67.4"	67.4"	67.4"	67.4"	67.4"	67.4"	67.4"
Hip room (1st row)	63.7"	63.7"	63.7"	63.7"	63.7"	63.7"	63.7"	63.7"	63.7"	63.7"
Legroom (1st row)	38.9"	38.9"	38.9"	38.9"	38.9"	38.9"	38.9"	38.9"	38.9"	38.9"
Cargo length, front (at floor)	103.5"	103.5"	103.5"	103.5"	144.3"	144.3"	103.5"	144.3"	103.5"	144.3"
Cargo length, front (at belt)	93.1"	93.1"	93.1"	93.1"	133.9"	133.9"	93.1"	133.9"	93.1"	133.9"
Cargo width between wheelhouses	53.1"	53.1"	53.1"	53.1"	53.1"	53.1"	38.5"	38.5"	48.4"	48.4"
Cargo height, maximum (with trim)	64.1"	64.1"	75.5"	75.5"	75.5"	75.5"	75.5"	75.5"	75.5"	75.5"
Maximum floor width	70.4"	70.4"	70.4"	70.4"	70.4"	70.4"	70.4"	70.4"	70.4"	70.4"
Interior standing height	65.3"	65.3"	76.7"	76.7"	76.7"	76.7"	76.7"	76.7"	76.7"	76.7"

CARGO CAPACITY										
Cargo volume (behind last row of seats)	222.5 cu. ft.	222.5 cu. ft.	261.3 cu. ft.	261.3 cu. ft.	370.8 cu. ft.	370.8 cu. ft.	261.3 cu. ft.	370.8 cu. ft.	261.3 cu. ft.	370.8 cu. ft.
Maximum roof load	660 lbs.	660 lbs.	330 lbs.	330 lbs.	330 lbs.	330 lbs.	330 lbs.	330 lbs.	330 lbs.	330 lbs.
Maximum available GCWR	13,930 lbs.	13,930 lbs.	13,930 lbs.	13,930 lbs.	13,930 lbs.	13,930 lbs.	15,250 lbs.	15,250 lbs.	15,250 lbs.	15,250 lbs.

MAXIMUM CAPABILITIES										
Maximum payload	4,023 lbs. G	3,428 lbs.	3,946 lbs. G	3,351 lbs.	3,329 lbs. G	2,998 lbs.	4,102 lbs.	3,716 lbs.	4,168 lbs.	3,782 lbs.
	3,770 lbs. D		3,693 lbs. D		3,594 lbs. D					
Maximum towing ³⁴	5,000 lbs.	5,000 lbs.	5,000 lbs.	5,000 lbs.	5,000 lbs.	5,000 lbs.	7,500 lbs.	7,500 lbs.	7,500 lbs.	7,500 lbs.
GVWR	9,050 lbs.	9,050 lbs.	9,050 lbs.	9,050 lbs.	9,050 lbs.	9,050 lbs.	9,990 lbs.	9,990 lbs.	9,990 lbs.	9,990 lbs.
TWR (maximum loaded trailer weight ratings)	500 lbs.	500 lbs.	500 lbs.	500 lbs.	500 lbs.	500 lbs.	750 lbs.	750 lbs.	750 lbs.	750 lbs.

SPRINTER CREW



TECHNICAL SPECIFICATIONS: 3500XD & 4500

Tires	3500XD						4500			
	Single						Super Single		Dual Rear Wheel	
Wheelbase	144"						144"	170"	144"	170"
Engine	Diesel	Diesel	Diesel	Diesel	Diesel	Diesel	Diesel	Diesel	Diesel	Diesel
Drivetrain	4x2	4x4	4x2	4x4	4x2	4x4	4x2	4x2	4x2	4x2
Roof height	Standard Roof	Standard Roof	High Roof	High Roof	High Roof	High Roof	High Roof	High Roof	Standard Roof	High Roof
Passenger capacity	5	5	5	5	5	5	5	5	5	5
Rows of seats	Two	Two	Two	Two	Two	Two	Two	Two	Two	Two

EXTERIOR										
Length	233.5"	233.5"	233.5"	233.5"	274.3"	274.3"	233.5"	274.3"	233.5"	274.3"
Height	97.9"	100.1"	109.1"	111.2"	108.7"	110.9"	109.4"	109.1"	97.8"	108.9"
Width - excluding mirrors	79.5"	79.5"	79.5"	79.5"	79.5"	79.5"	79.5"	79.5"	79.5"	79.5"
Width - including mirrors	95.5"	95.5"	95.5"	95.5"	95.5"	95.5"	95.5"	95.5"	95.5"	95.5"
Tire track, front	66.5"	66.5"	66.5"	66.8"	66.5"	66.8"	67.2"	67.2"	66.0"	66.0"
Tire track, rear	60.7"	60.7"	60.7"	60.7"	60.7"	60.7"	65.2"	65.2"	60.7"	60.7"
Front overhang BA	40.2"	40.2"	40.2"	40.2"	40.2"	40.2"	40.2"	40.2"	40.2"	40.2"
Rear overhang (rear axle to end of frame)	49.1"	49.1"	49.1"	49.1"	63.8"	63.8"	49.1"	63.8"	49.1"	63.8"
Load height, unloaded (ground to cargo floor)	29.3"	30.7"	29.2"	30.6"	28.9"	30.3"	29.2"	28.9"	29.1"	28.7"
Load height, loaded (ground to cargo floor)	24.5"	24.9"	24.5"	24.9"	24.6"	24.8"	24.5"	24.6"	24.5"	24.6"
Side-door opening height	59.8"	59.8"	71.6"	71.6"	71.6"	71.6"	71.6"	71.6"	59.8"	71.6"
Side-door opening width - sliding	49.3"	49.3"	51.0"	51.0"	51.0"	51.0"	51.0"	51.0"	49.3"	51.0"
Rear cargo door opening height	61.0"	61.0"	72.7"	72.7"	72.7"	72.7"	72.7"	72.7"	61.0"	72.7"
Rear cargo door opening width	60.7"	60.7"	61.2"	61.2"	61.2"	61.2"	61.2"	61.2"	60.7"	61.2"
Turning radius (curb-to-curb)	45.3'	43.3'	45.3'	43.3'	52.5'	50.2'	45.3'	52.5'	45.3'	45.3'
Ground to first step-side	21.7"	24.8"	21.6"	20.9"	21.6"	20.8"	20.8"	20.8"	21.8"	20.8"

INTERIOR										
Headroom (1st row)	47.3"	47.3"	56.4"	56.4"	56.4"	56.4"	56.4"	56.4"	47.3"	56.4"
Shoulder room (1st row)	67.4"	67.4"	67.4"	67.4"	67.4"	67.4"	67.4"	67.4"	67.4"	67.4"
Hip room (1st row)	63.7"	63.7"	63.7"	63.7"	63.7"	63.7"	63.7"	63.7"	63.7"	63.7"
Legroom (1st row)	38.9"	38.9"	38.9"	38.9"	38.9"	38.9"	38.9"	38.9"	38.9"	38.9"
Cargo length, front (at floor)	103.5"	103.5"	103.5"	103.5"	144.3"	144.3"	103.5"	144.3"	103.5"	144.3"
Cargo length, front (at belt)	93.1"	93.1"	93.1"	93.1"	133.9"	133.9"	93.1"	133.9"	93.1"	133.9"
Cargo width between wheelhouses	38.5"	38.5"	38.5"	38.5"	38.5"	38.5"	48.4"	48.4"	38.5"	38.5"
Cargo height, maximum (with trim)	64.1"	64.1"	75.5"	75.5"	75.5"	75.5"	75.5"	75.5"	64.1"	75.5"
Maximum floor width	70.4"	70.4"	70.4"	70.4"	70.4"	70.4"	70.4"	70.4"	70.4"	70.4"
Interior standing height	65.3"	65.3"	76.7"	76.7"	76.7"	76.7"	76.7"	76.7"	65.3"	76.7"

CARGO CAPACITY										
Cargo volume (behind last row of seats)	222.5 cu. ft.	222.5 cu. ft.	261.3 cu. ft.	261.3 cu. ft.	370.8 cu. ft.	370.8 cu. ft.	261.3 cu. ft.	370.8 cu. ft.	222.5 cu. ft.	370.8 cu. ft.
Maximum roof load	660 lbs.	660 lbs.	330 lbs.	330 lbs.	330 lbs.	330 lbs.	330 lbs.	330 lbs.	660 lbs.	330 lbs.
Maximum available GCWR	15,250 lbs.	15,250 lbs.	15,250 lbs.	15,250 lbs.	15,250 lbs.	15,250 lbs.	15,250 lbs.	15,250 lbs.	15,250 lbs.	15,250 lbs.

MAXIMUM CAPABILITIES										
Maximum payload	5,320 lbs.	5,022 lbs.	5,243 lbs.	4,945 lbs.	4,857 lbs.	4,559 lbs.	5,309 lbs.	4,923 lbs.	6,382 lbs.	5,919 lbs.
Maximum towing ³⁴	7,500 lbs.	7,500 lbs.	7,500 lbs.	7,500 lbs.	7,500 lbs.	7,500 lbs.	7,500 lbs.	7,500 lbs.	7,500 lbs.	7,500 lbs.
GVWR	11,030 lbs.	11,030 lbs.	11,030 lbs.	11,030 lbs.	11,030 lbs.	11,030 lbs.	11,030 lbs.	11,030 lbs.	12,125 lbs.	12,125 lbs.
TWR (maximum loaded trailer weight ratings)	750 lbs.	750 lbs.	750 lbs.	750 lbs.	750 lbs.	750 lbs.	750 lbs.	750 lbs.	750 lbs.	750 lbs.

SPRINTER PASSENGER



ADDITIONAL STANDARD FEATURES (PASSENGER)	1500		2500		1500		2500	
	1500	2500	1500	2500	1500	2500	1500	2500
MECHANICAL								
• Additional bar for driveshaft & exhaust extension	X	X				X	X	
• Axle ratio 3.923*		X			X	X		X
• Axle ratio 4.182 (standard on 2500 gas models only)	X	X			X	X		X
• Front axle reinforced (standard on 2500 170" WB models only)								X
• Rear spring vibration absorbers					X	X		X
• Stabilization Level I					X	X		X
• Suspension for comfort & load protection								X
• Tire pressure monitoring lamp								X

SEATING		1500	2500	1500	2500	1500	2500
• Aisle-side armrest		X	X				
• Four-seater bench in passenger compartment, 3rd row**		X	X				X
• Four-seater bench in passenger compartment, 4th row***			X				X
• Storage net, driver seat backrest				X	X		
• Storage net, passenger seat backrest				X	X		
• Three-seater bench in passenger compartment, 1st row (narrow); includes ISOFIX				X	X		
• Wall-side armrest							X
• Three-seater bench in passenger compartment, 2nd row (narrow)				X			
• Window pillar trim							X

INTERIOR		1500	2500	1500	2500	1500	2500
• 12V power outlet, rear compartment		X	X			X	X
• Air conditioning rear, roof-mounted		X	X			X	X
• Assist handle, B-pillar		X	X			X	X
• Audio systems speakers—5 front, 8 rear		X	X			X	X
• Coat hooks in passenger compartment		X	X			X	X
• Cupholders, front		X	X			X	X
• FMVSS 217 emergency exit		X	X			X	X
• Front-to-rear outlet in instrument panel				X	X		
• Fuel-fired heater booster (17,000 BTU)*				X	X		
• Heat insulation, front compartment				X	X		
• Heat insulation, rear compartment				X	X		
• Hinged lid for storage compartment				X	X		
• Illuminated front exits				X	X		
• Rear cabin heater & vents				X	X		
• Rear window defroster						X	X
• Sliding door, passenger side						X	X
• Storage compartment with net in rear doors						X	X
• Warm/cool air duct to rear compartment						X	X
• Weight-optimized plastic floor						X	X
• Window pillar trim						X	X

EXTERIOR		1500	2500	1500	2500	1500	2500
• 2nd row, fixed window, passenger side		X	X			X	X
• 3rd brake light		X	X			X	X
• Black tinting (90%) for rear windows		X	X			X	X
• Fixed window, center left***			X			X	X
• Fixed window, center right***			X			X	X
• Fixed window, rear left		X	X			X	X
• Fixed window, rear right		X	X			X	X
• High roof				X	X		
• Laminated glass rear				X	X		
• Rear doors, 180° opening				X	X		
• Rear mudflaps				X	X		
• Roof trim				X	X		
• Tow hook rear				X	X		
• Windows in rear doors				X	X		

SAFETY & SECURITY		1500	2500	1500	2500
• Longitudinal member reinforcement		X	X		
• Rearview camera (rearview mirror display)				X	X

OPTIONAL FEATURES (PASSENGER)		1500	2500	1500	2500	1500	2500
MECHANICAL							
• Additional battery for retrofit consumers, co-driver seat base**		X	X				X
• Additional battery for retrofit consumers, engine compartment**		X	X				X
• Additional DIN-slots		X	X				X
• Axle ratio 4.182 (standard on 1500 & 2500 gas models)			X				X
• Cruise control				X	X		
• Cutoff relay for additional battery				X	X		
• Deactivation lamp monitoring failure				X	X		
• Electric parking brake				X	X		
• Engine oil level display at cold start*					X		
• Fuel gauge, optimized for aux. fuel tap*					X		
• Misfueling prevention for diesel							X
• Parametric Special Module (PSM)							X
• Speed limitation, 65 mph							X
• Top speed limitation, 75 mph							X

SEATING		1500	2500	1500	2500
• Artico Man-made Leather Black		X	X		
• Fabric, Caluma Black		X	X		
• Heated driver seat				X	X
• Heated front passenger seat				X	X

INTERIOR		1500	2500	1500	2500	1500	2500
• 115V socket		X	X			X	X
• Acoustic Package		X	X			X	X
• Assist handle, left rear door		X	X			X	X
• Assist handle, right rear door		X	X			X	X
• Charging Package, dashboard		X	X			X	X
• Cigarette lighter & ash cup, front		X	X			X	X
• Door-mounted assist handle, driver & passenger (standard on 4x4)		X	X			X	X
• Electrically folding exterior mirrors				X	X		
• Electrically heated windshield				X	X		
• Fuel-fired pre-heater/booster (17,000 BTU)*				X	X		
• Instrument cluster with color display				X	X		
• Keys, two additional master				X	X		
• Leather steering wheel				X	X		
• Multifunction steering wheel				X	X		
• Navigation				X	X		
• Optional 3-button keys						X	X
• Overhead storage slot, front center						X	X
• Rear doors, opening to side-wall						X	X
• Rear heater prep						X	X
• Satellite radio						X	X
• THERMOTRONIC automatic climate control						X	X
• Tray for smartphones incl. wireless charging						X	X

EXTERIOR		1500	2500	1500	2500	1500	2500
• Bumpers, front/rear, primed		X	X			X	X
• Bumper step, rear, Grey		X	X			X	X
• DEF fluid filler cap – lockable		X	X			X	X
• Deletion of model badge, right rear door		X	X			X	X
• Deletion of Sprinter badge, left rear door		X	X			X	X
• Elec. closing assist, right sliding door (soft close)		X	X			X	X
• Half-sided step rear (for trailer hitch)		X	X			X	X
• Heated & electrically adjustable exterior mirrors				X	X		
• Heated rear window(s) with washers/wipers				X	X		
• Mounting rails for roof rack				X	X		
• Opening limiter, electrically operated sliding door				X	X		
• Painted metallic front & rear bumper				X	X		
• Primed side moldings				X	X		
• Sliding door, two-stage opening				X	X		
• Trailer hitch, 5,000 lbs.				X	X		
• Light-alloy wheels 6.5 J x 16						X	X
• M+S winter tires						X	X
• Rims painted Arctic White						X	X
• Rims painted Jet Black						X	X
• Spare tire carrier deletion						X	X
• Spare wheel deletion						X	X
• Tire Brand Continental						X	X
• Tire Brand Kumho						X	X
• Tire Brand Michelin						X	X

SAFETY & SECURITY		1500	2500	1500	2500
• Active Distance Assist DISTRONIC®2		X	X		
• Backup alarm		X	X		
• Blind Spot Assist ⁵		X	X		
• Emergency flashlight				X	X
• First-aid kit				X	X
• Fog lamp with cornering light function				X	X
• Parking Package					X
• Parking Package with 360° camera					X
• Security alarm with interior motion sensor					X

OPTIONAL PACKAGES		1500	2500	1500	2500
• Comfort Package		X	X		
• Comfort Package (seat addition)		X	X		
• Comfort Plus Package		X	X		
• DISTRONIC® Addition Premium Package		X	X		
• Driver Convenience Package				X	X
• Exterior Lighting Package				X	X
• High-Performance Rear Air Conditioning Package				X	X
• Passenger Accessibility Package				X	X
• Premium Package					X
• Premium Plus Package					X
• Rear Comfort Package					X

*Not available with gasoline engine.
 **12-seater model only.
 ***15-seater model only.

For a complete listing of features included in each package, build your van at freightlinersprinterusa.com

SPRINTER PASSENGER



TECHNICAL SPECIFICATIONS: 1500 & 2500

	1500		2500				
	Single		Single				170"
Tires	144"		144"				
Wheelbase	144"		144"				170"
Engine	Gas	Gas	Gas/Diesel	Diesel	Gas/Diesel	Diesel	Diesel
Drivetrain	4x2	4x2	4x2	4x4	4x2	4x4	4x2
Roof height	Standard Roof	High Roof	Standard Roof	Standard Roof	High Roof	High Roof	High Roof
Passenger capacity	12	12	12	12	12	12	15
Rows of seats	Four	Four	Four	Four	Four	Four	Five

EXTERIOR							
Length	233.5"	233.5"	233.5"	233.5"	233.5"	233.5"	274.3"
Height	102.8"	114.2"	102.8"	106.1"	114.2"	117.6"	113.5"
Width – excluding mirrors	79.5"	79.5"	79.5"	79.5"	79.5"	79.5"	79.5"
Width – including mirrors	92.3"	92.3"	92.3"	92.3"	92.3"	92.3"	92.3"
Tire track, front	67.2"	67.2"	67.2"	67.8"	67.2"	67.8"	67.2"
Tire track, rear	68.2"	68.2"	68.2"	68.2"	68.2"	68.2"	68.2"
Front overhang BA	40.2"	40.2"	40.2"	40.2"	40.2"	40.2"	40.2"
Rear overhang (rear axle to end of frame)	49.1"	49.1"	49.1"	49.1"	49.1"	49.1"	63.8"
Load height, unloaded (ground to cargo floor)	TBD	27.2"	TBD	TBD	27.2" [Ⓒ]	30.8"	26.3"
					27.4" [Ⓓ]		
Load height, loaded (ground to cargo floor)	TBD	23.8"	TBD	TBD	23.8"	27.2"	23.9"
Side-door opening height	TBD	71.6"	TBD	TBD	71.6"	71.6"	71.6"
Side-door opening width – sliding	51.1"	51.0"	51.1"	51.0"	51.0"	51.0"	51.0"
Rear cargo door opening height	TBD	72.7"	TBD	TBD	72.7"	72.7"	72.7"
Rear cargo door opening width	61.2"	61.2"	61.2"	61.2"	61.2"	61.2"	61.2"
Turning radius (curb-to-curb)	40.7'	40.7'	40.7'	43.3'	40.7'	43.3'	47.2'
Ground to first step-side	20.5"	20.5"	20.5"	24.2"	20.5"	24.2"	19.9"

INTERIOR							
Headroom (1st row)	56.4"	56.4"	56.4"	56.4"	56.4"	56.4"	56.4"
Shoulder room (1st row)	67.4"	67.4"	67.4"	67.4"	67.4"	67.4"	67.4"
Hip room (1st row)	63.7"	63.7"	63.7"	63.7"	63.7"	63.7"	63.7"
Legroom (1st row)	38.9"	38.9"	38.9"	38.9"	38.9"	38.9"	38.9"
Cargo length, front (at floor)	35.9"	35.9"	35.9"	35.9"	35.9"	35.9"	48.4"
Cargo length, front (at belt)	25.6"	25.6"	25.6"	25.6"			

ENDNOTES

TBD values to be updated at a later date.

1. Active Brake Assist may not be sufficient to avoid an accident. It does not react to certain stationary objects, nor recognize or predict the curvature and/or lane layout of the road or every movement of vehicles ahead. It is the driver's responsibility at all times to be attentive to traffic and road conditions, and to provide the steering, braking, and other driving inputs necessary to retain control of the vehicle. Drivers are cautioned not to wait for the system's alerts before braking, as that may not afford sufficient time and distance to brake safely. See Operator's Manual for system's operating speeds and additional information and warnings.

2. Active Distance Assist DISTRONIC® is no substitute for active driving involvement. It does not adapt cruising speed in response to stationary objects, nor predict the curvature and lane layout of the road or the movement of vehicles ahead. It is the driver's responsibility at all times to be attentive to traffic and road conditions, and to provide the steering, braking, and other driving inputs necessary to retain control of the vehicle. Drivers are cautioned not to wait for the system's alerts before braking, as that may not afford sufficient time and distance to brake safely. Braking effectiveness also depends on proper brake maintenance, and tire and road conditions. See Operator's Manual for system's operating speeds and additional information and warnings.

3. Rearview camera does not audibly notify driver of nearby objects and is not a substitute for actively checking around the vehicle for any obstacles or people. Images displayed may be limited by camera field of view, weather, lighting conditions, and the presence of dirt, ice, or snow on the camera.

4. Driving while drowsy or distracted is dangerous and must be avoided. ATTENTION ASSIST® may be insufficient to alert a fatigued or distracted driver and cannot be relied on to avoid an accident or serious injury.

5. Blind Spot Assist is a warning system only, may not be sufficient to avoid all accidents involving vehicles in your blind spot and does not estimate the speed of approaching vehicles. It should not be used as a substitute for driver awareness and checking of surrounding traffic conditions. See Operator's Manual for system's operating speeds and additional information and warnings.

6. Rear Cross-Traffic Alert is not a substitute for actively checking around the vehicle for any obstacles or people. It may not detect certain objects based on their size, path, proximity, or speed and angle of approach, or due to sensor obstruction, and does not control the steering angle. See Operator's Manual for additional information, tips, and warnings.

7. Active Lane Keeping Assist may be insufficient to alert a fatigued or distracted driver of lane drift and cannot be relied on to avoid an accident or serious injury.

8. Crosswind Assist can engage automatically when sensing dangerous wind gusts at highway speeds exceeding 50 mph. Performance is limited by wind severity and available traction, which snow, ice, and other conditions can affect. Always drive carefully, consistent with conditions.

9. No system, regardless of how advanced, can overcome the laws of physics or correct careless driving. Please always wear your seat belt. Performance is limited by available traction, which snow, ice, and other conditions can affect. Always drive carefully, consistent with conditions. Best performance in snow is obtained with winter tires.

10. Warning: the forces of a deploying airbag can cause serious or fatal injuries to a child under age 13. The safest seating position for your child is in a rear seat, belted into an appropriate, properly installed child seat, or correctly wearing a seat belt if too large for a child seat. See Operator's Manual for additional warnings and information on airbags, seat belts, and child seats.

11. Requires the use of ultra-low-sulfur diesel fuel. Freightliner Sprinters are approved to use B5 biodiesel (approved diesel fuel with a maximum 5% biodiesel content). The only approved biodiesel content is one that both meets ASTM D6751 specifications and has the oxidation stability necessary to prevent deposit-/corrosion-related damages to the system (min. 6h, proven by EN14112 method). Please see your service station for further information. If the B5 biodiesel blend does not clearly indicate that it meets the above standards, please do not use it. The Freightliner Sprinter New Vehicle Limited Warranty does not cover damage caused by fuel standards not approved by Freightliner.

12. Driver is responsible for monitoring fluid levels and tire pressure between service visits. See Maintenance Booklet for details.

13. Mercedes PRO is available for the contiguous U.S., Hawaii, and Alaska with the MY20 Sprinter (as of MY19). Contact an authorized Mercedes-Benz Vans dealership for more information.

14. After the Mercedes PRO connect go-live in the Sprinter, there will be a Vehicle Management Tool for the factory-equipped solution and Communication Module.

15. The availability of services in addition to the integrated Communication Module depends on the network coverage of the mobile network provider. The Communication Module (LTE) is not available in the U.S. Virgin Islands or Puerto Rico.

16. In order to prevent distracted driving, use of the Mercedes PRO connect App is not permitted while operating a motor vehicle. If used while operating a motor vehicle, there is an increased risk of endangering oneself and others. Please follow your local laws and restrictions.

17. When the Emergency Call System is triggered, the following data are automatically transmitted: vehicle identification number, GPS position, direction of travel, time of emergency call, language setting, and number of occupants in the cab. The Emergency Call System is activated from the moment the vehicle is delivered to the customer following a sale. No separate terms of use have to be accepted. The Communication Module for Digital Services and the emergency call button are necessary for use of the Emergency Call System service.

18. The information from this service is shown on the touchscreen of the multimedia system. Live Traffic Information can be used only in conjunction with the MBUX multimedia system with 7-inch touchscreen and navigation or the MBUX multimedia system with 10.25-inch touchscreen.

19. A valid subscription to Live Traffic Information is necessary to use Car-to-X Communication. Car-to-X Communication can be used only in conjunction with the MBUX multimedia system with 7-inch touchscreen and navigation or the MBUX multimedia system with 10.25-inch touchscreen. Only the data belonging to vehicles directly affected by the event and equipped with Car-to-X Communication are processed; therefore, you may not always receive timely hazard warnings through this system.

20. Update times, content, and installation times can vary. These are activated when the vehicle is delivered. Updates to the Communication Module (LTE) are automatic, as otherwise certain applications might no longer work. You can access the current status of the software versions in your vehicle via the Mercedes PRO Portal.

21. The wireless Internet in the Car is provided by AT&T and created via an integrated SIM card. A contract must be made with AT&T in order to access data services, and this contract can be made via the Mercedes PRO Portal or infotainment system. In addition to a data contract with AT&T, either the MBUX multimedia system with 7-inch touchscreen and navigation or satellite radio or the MBUX multimedia system with 10.25-inch touchscreen is required for the Internet in the Car service. Additional costs may apply depending on the amount of data used.

22. In order for us to offer you this service, data is transferred from the vehicle to Mercedes-Benz/Freightliner Sprinter. This data includes the vehicle identification number, mileage, and service code (A or B), as well as the remaining time and mileage until the next service is due and information on the brake system and coolant.

23. The Online Map Update service is available only in conjunction with the MBUX multimedia system with 7-inch touchscreen and navigation or the MBUX multimedia system with 10.25-inch touchscreen. The service must first be activated and the region for the map update selected in the Mercedes PRO Portal.

24. You can use the Navigation Functions service only in conjunction with the MBUX multimedia system with 7-inch touchscreen and navigation or the MBUX multimedia system with 10.25-inch touchscreen. Before use, some of the applications must first be activated via the Mercedes PRO Portal.

25. You can use the Multimedia Functions service only in conjunction with the MBUX multimedia system with 7-inch touchscreen and navigation or satellite radio or the MBUX multimedia system with 10.25-inch touchscreen. Before use, some of the applications must first be activated via the Mercedes PRO Portal. For various functions (Internet Radio and Browser) additional data volume is necessary, which can be purchased via the Internet in the Car service.

26. The Remote Control function via the Mercedes PRO connect App makes it possible for you to view the status of the doors and windows. The driver is also able to unlock the vehicle using a code via the Mercedes PRO connect App as well as check the status of and operate the auxiliary heater. This function is available only in conjunction with an optional auxiliary heater (hot water heater).

27. The available data can vary according to the vehicle model. The tire pressure can be shown only on certain model configurations. Display of the AdBlue® level is available only in conjunction with the optional SCR Generation 3 emissions control and on diesel models.

28. To safeguard the driver's privacy, he/she can switch off the vehicle tracking function via the Mercedes PRO connect App when making private journeys or traveling to and from work.

29. Messages from all drivers are visible to the fleet manager. Using the Vehicle Management Tool, he/she can, in turn, contact any driver individually with a message. If the Send2Car function is included in the subscription, a POI can be sent directly to the vehicle's navigation system. The Vehicle Operations service is additionally required to send POIs directly from the Vehicle Management Tool.

30. If you wish to use the Digital Driver's Log for your tax documentation, be sure to verify in advance whether the form and the information provided meet the fiscal requirements of your local tax authority. It provides three categories in which to categorize journeys: business journey, private journey, or commute.

31. The Theft Warning is shown in the chosen communication channel if the vehicle crosses preset geofences within a certain time period or if the optional Security alarm with interior motion sensor system sounds the alarm. Available only in conjunction with the optional Security alarm with interior motion sensor.

32. Apple CarPlay® is a product of Apple Inc. Android™ Auto is a product of Google Inc. Device and app providers' terms and privacy statements apply. Requires connected compatible device and data plan. Apps, content, and features are selected solely by their providers. Connection to apps and streaming services may be limited by the device's network connection. Data usage is routed through device and subject to fees, charges, and restrictions in user's wireless plan. The vehicle's factory audio/information interface, including COMAND® navigation, may not be used simultaneously with Apple CarPlay or Android Auto. When Apple CarPlay or Android Auto is in use, the steering-wheel voice control button accesses Siri® or Google voice recognition software for voice commands.

33. Unsecured cargo can become hazardous in a collision. Always secure cargo.

34. Maximum permissible gross weight of the trailer, if the trailer is equipped with a separate functional braking system. Please make sure to comply with local trailer load regulations.

35. MasterSolutions™ program vehicles are custom, special-order only vehicles modified by the MasterSolutions™ Provider chosen by you. Although the Daimler Vans warranty does not apply to the modifications, separate warranties offered by the MasterSolutions™ Provider may apply. Details are available from your local dealer.

36. Actual rates, terms, down payment, and program eligibility will be determined by the Daimler Truck Financial Credit Team based upon the creditworthiness of the customer.

37. TRAC leases are limited to motor vehicles leased to businesses and used at least 50% of the time for business purposes. Consult your tax or financial advisor for tax and accounting treatments.

38. The Mercedes-Benz Vans Roadside Assistance Program is available for vehicles covered under warranty and includes such services as towing, jump-start in the event of a dead battery, and assistance with the installation of a spare tire. Service charges apply for out-of-warranty vehicles.

39. Traffic Sign Assist is not a substitute for driver awareness of posted speed limits and other conditions. Driver is responsible for safe operation of the vehicle in accordance with local traffic laws and driving conditions.

©2020 Mercedes-Benz USA, LLC, One Mercedes-Benz Drive, Sandy Springs, GA 30328 1-877-762-8267 All illustrations and specifications contained in this brochure are based on the latest product information available at the time of publication. All measurements are according to SAE J1100. Daimler Vans USA reserves the right to make changes at any time, without notice, to colors, materials, equipment, specifications, and models. Any variations in colors shown are due to reproduction variations of the printing process. Illustrations may include test situations. Some vehicles may be shown with non-U.S. equipment. Some vehicles are shown with optional equipment available at extra cost. Some optional equipment may not be available individually and/or on all models. For current information regarding the range of models, standard features, optional equipment, and/or colors available in the U.S. and their pricing, please contact your nearest authorized Freightliner Sprinter dealer. All rights reserved. Bluetooth® is a registered trademark of Bluetooth SIG, Inc.

www.freightlinersprinterusa.com

Printed in the U.S.A.