


STELVIO





4	INTRODUCTION
5	HISTORY
6	PERFORMANCE
13	Q4 AWD
14	STYLE
19	CARBON PACKAGE
20	NERO EDIZIONE
21	INTERIOR
23	TECHNOLOGY

AN IDENTITY BORN OF DISTINCTION

25	SAFETY & SECURITY
28	FEATURES
31	WHEELS
38	EXTERIOR COLORS
39	INTERIOR FABRICS
43	INTERIOR TRIMS
44	MERCHANDISE





LOOKING FORWARD TO MAKE HISTORY

The courage to reach further — it's what sets this Brand, its designers and its drivers apart. Racing still serves to prove and inspire Alfa Romeo design, long known to be geared for both track and street. It has produced a wide range of innovative vehicles that are now hailed as classics. From the 8C 2300 (which won the 1931 Le Mans) to the Giulia GTA (taking several 1960s European Touring Car Championship titles) to the Alfa Romeo 155 V6 Ti (an Italian Superturismo series champ in the 1990s), Alfa Romeo continues to push ahead in order to proudly look back.



FIERCE EXPRESSION

For well over a century, Alfa Romeo designers and engineers have built a legendary Brand by achieving remarkable symmetry: their goals of creating heightened emotions and developing innovative technology are passionately pursued in equal measure. These defining principles inspire everything from our most powerful Formula 1 entries to today's Stelvio Quadrifoglio — all clocking in world-class performance laps on racing's most challenging tracks. The main takeaway from the unique, driver-centric design of Alfa Romeo? A relentless intensity that transforms every road — and every passenger.

WILDEST DREAMS: DELIVERED







2.9L TWIN-TURBOCHARGED V6 ENGINE

505

horsepower

443

lb-ft of torque between
2,500 and 5,500 rpm



0 - 60 mph

3.6

seconds

176

top speed

mph



BLOOD BROTHERS

THE HEART OF THE BRAND

Alfa Romeo Racing and the Stelvio Quadrifoglio share a special bond: Alfa Romeo DNA that's steeped in pacesetting innovation. Alfa Romeo has long leveraged racetrack technology with street-smart design, making its mark in Formula 1 racing and commuter lanes alike.

Alfa Romeo

RACING
SINCE 1910





Stelvio Ti Sport shown in Montecarlo Blue Metallic.

An aerial, top-down view of a dark, textured surface, possibly asphalt or concrete, that is heavily cracked. The cracks are illuminated from within, glowing with a bright yellow-orange light. Two red cars are positioned on the surface, one in the upper right and one in the lower left. The overall color palette is dominated by dark reds, blacks, and the glowing yellow of the cracks. The text "A SOLID HISTORY OF BREAKING THE MOLD" is centered on the right side of the image in a white, sans-serif font.

A SOLID HISTORY OF
BREAKING THE MOLD

MASTERFUL CURVES

The Q4 All-Wheel Drive (AWD) system offers the performance and driving pleasure of Rear-Wheel Drive (RWD), switching to AWD only when warranted. Under normal conditions, the Q4 AWD system sends 100 percent of the engine torque to the rear axle. When necessary, the system can automatically transfer up to 60 percent of the torque to the front axle, thanks to the Active Transfer Case (ATC). It continuously monitors road conditions to deliver enhanced torque distribution, maximizing grip and performance.

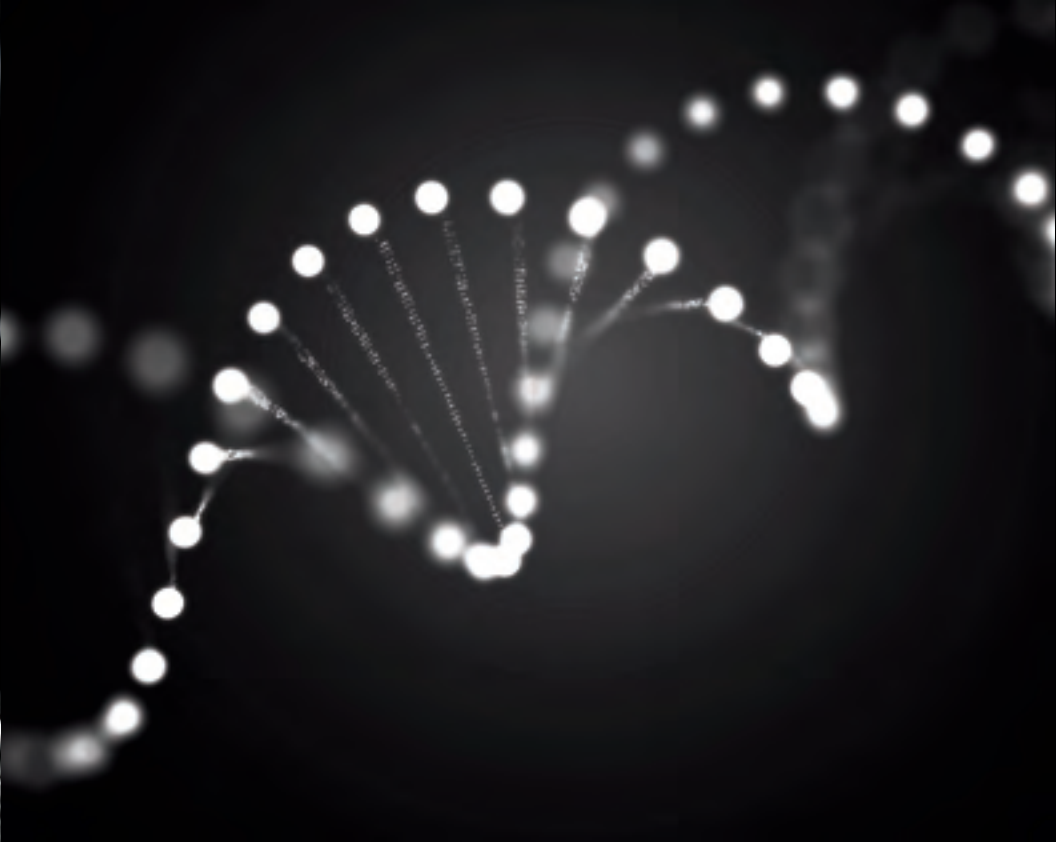




THE LEGACY LOOMS LARGE



Stelvio Ti Sport shown in Montecarlo Blue Metallic.



DNA THAT ADAPTS EASILY

ALFA DNA DRIVE MODE SELECTORS Both the Alfa DNA Drive Mode Selector and Quadrifoglio's exclusive Alfa DNA Pro instantaneously adapt the behavior of the vehicle to the selected driving mode. The systems automatically reset to "Natural" at the vehicle start while retaining the ability to change modes at any time.



RACE (only on Quadrifoglio with Alfa DNA Pro) activates the over-boost function, opens up the dual-mode exhaust system and turns off ESC,^{1*} increasing torque to maximize performance.



DYNAMIC opens the available dual-mode exhaust (standard on Quadrifoglio) and delivers sharper throttle response, enhanced steering feedback and performance shift-mapping for sporty on-road driving.



NATURAL is a comfort setting for a perfect balance in daily driving and is calibrated to be the default setting.



ADVANCED EFFICIENCY is engineered to deliver maximum fuel efficiency; on Quadrifoglio, it also changes the threshold for all of the safety systems.

*A note about this brochure: all disclosures can be found on the last page.



Stelvio Ti Sport shown with the Black performance Sport leather-trimmed seats.

titanium

22

Ti

47.867

aluminum

13

Al

26.982

ALFA LINK™ SUSPENSION

Stelvio excels at high-lateral acceleration with its front double-wishbone suspension. Its semi-virtual steering axis delivers rapid, accurate steering. In the rear, a patented 4¹/₂-link system makes for optimum lateral grip and comfort on any surface.



INTEGRATED BRAKE SYSTEM (IBS) The innovative IBS combines stability control and other traditional brake system components into one unit, reining in all that Stelvio dishes out. Pedal feel is acutely responsive, Antilock Brake System (ABS) vibration is minimized and response time is instantaneous for shorter braking distances.

CARBON FIBER DRIVESHAFT An ideal power-to-weight ratio is the outcome of Stelvio's lightweight, high-tech materials — including the use of carbon fiber for the driveshaft. It works to enhance Stelvio's overall balance and response, providing exceptional handling even in extreme conditions.



STELVIO CARBON PACKAGE With this menacing package (available on Ti Sport and Quadrifoglio), every element of Stelvio exudes power. The Stelvio Carbon Package revs things up with its genuine carbon fiber grille and mirrors, while Dark taillamps, Dark badging and monochromatic wheel caps add to its gutsy demeanor.



STELVIO NERO EDIZIONE PACKAGE Stelvio takes a slightly sinister turn with striking accents available together on this special edition. 20-inch Miron Black Sport aluminum wheels (19-inch on Stelvio Sprint, 20-inch Dark 5-hole aluminum wheels on Quadrifoglio), Dark Miron V-Scudetto grille surround and Dark Miron exterior mirror caps set the mood. Custom-painted brake calipers (Red/Black/Yellow), Dark taillamps, Dark exhaust tips, Dark Miron rear fascia appliqué and Gloss Black window surrounds complete the look.



Beyond breathtaking performance, Alfa Romeo Stelvio represents a way of living ... the Italian way ... where passion drives everything from food to music to design. Its influence is unmistakable with every glance and touch. As shown here inside Stelvio Ti Sport, Red performance Sport leather-trimmed seats set a spirited tone. The cabin embraces a striking combination of materials, including genuine Aluminum trim, paddle shifters, pedals and footrest. The heated front seats are leather-trimmed and the steering wheel is leather-wrapped; 14-way power driver seat includes 4-way lumbar support with power bolsters and manual thigh support. It's all just a snapshot of the wide-ranging interior choices available across the Stelvio lineup, as outlined in the specification pages.

KEY NOTES

Alfa Romeo Stelvio has audio system options that will be music to everyone's ears.

Included as standard is a 180-watt system that surrounds occupants with an acoustically impressive performance, thanks to 8 speakers (4 tweeters and 4 woofers). An available premium audio system for Stelvio ramps things up even more, pumping out 400 watts with 10 speakers and a subwoofer.

Alfa Romeo has partnered with Harman Kardon® to make concert-like sound available for the ride. Its 900-watt, 12-channel class D amplifier and Logic 7® sound technology distribute clear sound through a system of 14 premium speakers with a subwoofer. Brushed aluminum speaker surrounds add a visually pleasing note. All proof that Stelvio is as adept at carrying a tune as it is cargo.



VALUABLE CONNECTIONS

APPLE CARPLAY^{®2} COMPATIBILITY This is smart iPhone[®] integration, so you will experience your favorite features through your dashboard. With Siri,^{®3} all you have to do is ask — catch up on calls and messages, get directions from Apple Maps or request a song through Apple Music. The system lets you browse music or discover nearby gas stations, parking, restaurants and more. Plus, Maps helps to anticipate where you're headed.



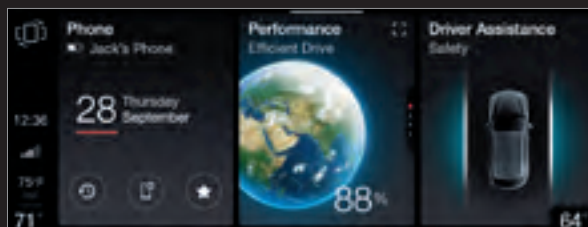
ANDROID AUTO^{™4} INTEGRATION Bring the best of Google with you in your Stelvio. Talk to Google on Android Auto and get things done with your voice so you can keep your focus on driving. Easily send messages, get directions, control media and more. Just say, "Hey Google" or long-press the voice control button on your steering wheel. Standard.



SCREEN GEMS



In Stelvio, a wealth of information is right at your fingertips. For example, explore the inner workings of the Alfa DNA/Alfa DNA Pro Mode Selector settings with data pages that outline the functionality of its key performance features. Each mode has a unique page within the Drive Mode Explorer that highlights vehicle settings, including steering, shift behavior, pedal mapping and more.



Stelvio takes multitasking to a new level with indispensable content that features a choice of interactive widgets that scroll horizontally. Swipe through music, phone, navigation, performance and settings widgets that put essential controls conveniently within reach.



Enjoy 3D navigation with the 8.8-inch touchscreen that presents a vertically maximized view. This three-dimensional map enhancement provides the driver with a display closer to reality and superior orientation. Signpost images are integrated into the format, providing a consistent place where drivers can reliably look for vital information like speed limits, exit numbers, road numbers and more. Navigation is standard on Ti models and above, available on Sprint.

FORWARD COLLISION WARNING (FCW) WITH FULL-SPEED STOP⁵ This system provides both audible and visual warnings to the driver and is able to bring the vehicle to a full stop when a frontal collision may be imminent. Standard on all 2021 Stelvio models.

AIR BAG⁶ SYSTEM Stelvio features a standard comprehensive system that includes driver and front-passenger dual advanced air bags, supplemental front-seat-mounted side air bags (pelvic-thorax), front and rear side-curtain air bags, along with driver and front-passenger inflatable knee air bags.

ANTISLIP REGULATION (ASR) AND TRACTION CONTROL SYSTEM (TCS) The standard ASR limits the spin of the driving axle during a driver torque request in the event the adherence limit is reached, optimizing vehicle traction. Standard TCS limits the wheelspin of a single drive wheel by applying brake torque to the wheel while an equivalent amount of torque is transferred via the differential to the other wheel, providing the vehicle the torque required to drive away.



FORESEEN CIRCUMSTANCES



HILL START ASSIST (HSA) AND HILL DESCENT CONTROL (HDC) These standard systems aid the driver during maneuvers when the vehicle is on a slope. HSA maintains and releases brake pressure during vehicle drive-off, while HDC maintains a constant speed by varying brake pressure, allowing a controlled vehicle descent.

ADAPTIVE CRUISE CONTROL WITH FULL STOP (ACC STOP)⁷ This available system helps drivers maintain a safe distance from the vehicle ahead and, under certain traffic conditions, can bring Stelvio to a full stop without driver intervention.

LANE DEPARTURE WARNING (LDW)⁸ Drivers benefit from this available feature that emits an audio and dash-light visual warning of an inadvertent lane departure, reminding the driver to stay the course.



DYNAMIC STEERING TORQUE (DST) Electronic Stability Control (ESC)¹ directs the Electric Power Steering (EPS) to produce optimal stopping stability. It provides greater stability in certain braking and dynamic situations — like when there is a different adherence for each wheel. Standard on all Stelvio models.

ALFA STEERING TORQUE (AST) The AST functionality integrates ESC¹ with electric steering in order to increase the safety level of the vehicle. Thanks to AST, in dangerous situations like braking on a surface with varying grip, ESC¹ will order the activation of additional torque on the steering wheel. Standard on all Stelvio models.

BACK-UP CAMERA⁹ WITH DYNAMIC GRID LINES AND REAR PARK SENSORS¹⁰ are standard on all Stelvio models.

BLIND SPOT MONITORING (BSM)¹¹ This Quadrifoglio exclusive system has dual ultra-wideband radar sensors that aid the driver when changing lanes, and when trailing vehicles are in the blind spot, via an illuminated sideview mirror icon.

REAR CROSS-PATH DETECTION⁹ This Quadrifoglio exclusive system is activated any time the vehicle is in Reverse. It lets the driver know there is an object in the rear pathway with illuminated icons on the sideview mirror and with an audible chime.

THE ACTIVE DRIVER ASSIST SYSTEMS

Alfa Romeo offers Enhanced Driver Safety and Active Driver Assist Systems (ADAS), packaged to various groups, that represent the latest steps toward a future of autonomous driving. With these available systems, drivers are complemented with advanced safety technology when behind the wheel.

LANE KEEP ASSIST⁸ With a forward-looking camera system, this system actively helps keep the vehicle within the marked lane by changing the direction of the vehicle by applying brake drag or affecting the steering system. It helps reduce collision potential and road departures by providing a visual and audible warning should the vehicle drift outside of lane boundaries or if the driver removes their hands from the wheel. Available.

ACTIVE BLIND SPOT / "SIDE ASSIST"¹¹ Change lanes confidently or stay right where you are with this warning system that detects approaching traffic from behind, along with its rate of travel. An LED signal in the corresponding exterior side mirror indicates a vehicle that's too close, while steering-wheel resistance adds another accident-avoidance action. Available.

TRAFFIC SIGN RECOGNITION¹² This system can detect posted speed-limit signs and, along with information in the navigation system's map database, recommend to the driver to adapt their set cruising speed accordingly. Available.

DRIVER ATTENTION ALERT⁸ The system monitors for and detects signs of drowsiness based on driver behavior, following up with a driver alert and recommendation for rest. Available.

HIGHWAY ASSIST SYSTEM (HAS)¹³ HAS is an autonomous system designed to help with acceleration, braking and steering on highways, reducing driver workload and fatigue. While performing lane-centering steering, it requires drivers to remain engaged by keeping hands on the wheel. Available.

TRAFFIC JAM ASSIST¹⁴ When traffic is moving slowly on well-marked roads (up to 37 mph), this enhancement to Adaptive Cruise Control with Full Stop (ACC Stop)⁷ assumes control of the accelerator, brake and steering to keep the vehicle within its lane. Front radar sensors and a front camera help the system orient itself to lane markings, traffic and structures; when conditions reach the limits of the system's abilities, it alerts the supervising driver to take over. Available.



STELVIO SPRINT

MECHANICAL

All-aluminum 2.0L Turbocharged
4-cylinder engine
280 hp and 306 lb-ft of torque
8-speed automatic transmission
Q4 All-Wheel Drive (AWD)

EXTERIOR

18-inch Dark 5-spoke
aluminum wheels
235/60R18 run-flat all-season tires
4-wheel discs with Brembo®
front brakes
35W Bi-xenon headlamps
LED Daytime Running Lamps (DRLs)
and taillamps
Aluminum window surrounds
Aluminum roof rails
Dual Bright exhaust tips
Colored brake calipers
(Red/Black/Yellow)
Sport-tuned suspension

INTERIOR

Black push-button start on
steering wheel
Driver's-seat memory
Black interior trim
Black scuff plates
Ambient lighting
Laminated glass and Noise, Vibration
and Harshness Package
Premium Sport leather-trimmed seats
10-way power front seats, including
4-way lumbar support with power
bolsters and manual thigh support
Sport leather-wrapped steering wheel
Steering-column-mounted
aluminum paddle shifters
Black headliner

TECHNOLOGY

8.8-inch multi-touch display
7-inch Thin Film Transistor
(TFT) cluster
AM/FM radio/MP3/Auxiliary-In/
Bluetooth®/4 USBs
Apple CarPlay®²/Android Auto™⁴/
6-month SiriusXM®¹⁶
trial subscription
Rotary controller
Forward Collision Warning with
Full-Speed Stop⁵
Alfa DNA Drive Mode Selector
Back-Up Camera⁹
Rear Park Sensors¹⁰
Power liftgate
Passive entry/keyless-go
Remote start¹⁵
Universal garage door opener
Automatic headlamps
Automatic rain-sensing
windshield wipers
Dual-zone climate control
Integrated Braking System (IBS)
Hill Descent Control (HDC)

OPTIONS/PACKAGES

Nero Edizione Package
Sun & Sound Package
Performance Package
Cold Weather Package
Active Assist 1 Package

18-inch Polished Double Y-spoke
aluminum wheels
19-inch Sport 5-hole aluminum
wheels (included with Nero
Edizione Package)
Trailer-tow hitch

20-inch Miron Black Sport
aluminum wheels (included with
Nero Edizione Package on Rear-
Wheel Drive (RWD))
Wireless charging pad



Ti

Adds to Stelvio Sprint:

MECHANICAL

All-aluminum 2.0L Turbocharged
4-cylinder engine
280 hp and 306 lb-ft of torque
8-speed automatic transmission
Q4 All-Wheel Drive (AWD)

EXTERIOR

19-inch Polished Y-spoke
aluminum wheels
225/55R19 run-flat all-season
performance tires
Heated windshield washer nozzles
Body-Color Appearance Kit
Dual-pane sunroof

INTERIOR

Heated front seats
Heated steering wheel
Genuine Dark Gray Oak Wood
interior trim
Alfa Romeo Bright aluminum
door sills

OPTIONS/PACKAGES

Active Assist 2 Package
Performance Package (Ti)
Nero Edizione Package
Dark Miron Appearance Kit
(Ti Sport)
Heated rear seats
Headlamp washers
Leather-wrapped dash and upper
door trim

TECHNOLOGY

Front Park Sensors¹⁰
AM/FM/HD 8.8-inch multi-touch
display with navigation

Hands-free power liftgate
Trailer-tow hitch
Compact spare tire
Wireless charging pad
Colored brake calipers
(Red/Black/Yellow) (Ti)
Adaptive suspension
Premium Package
High-performance
Bi-xenon headlamps

Ti SPORT

Adds to Ti:

EXTERIOR

Dark exhaust system
20-inch Sport 5-hole
aluminum wheels
225/40R20 run-flat all-season
performance tires
Sport front and rear fascias
Gloss Black window surrounds
and roof rails
Colored brake calipers
(Red/Black/Yellow)
Sport-tuned suspension

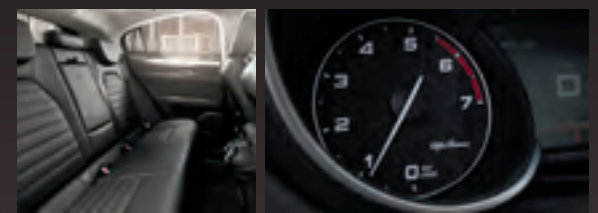
INTERIOR

Premium Sport leather-trimmed seats
14-way power front seats, including
4-way lumbar support with power
bolsters and manual thigh support
Sport leather-wrapped steering wheel
Steering-column-mounted
aluminum paddle shifters
Aluminum interior trim
Aluminum pedals and footrest
Black headliner
Perforated leather shifter

TECHNOLOGY

Mechanical limited-slip
rear differential

Lusso Package (Ti)
Carbon Package (Ti Sport)
20-inch Sport aluminum wheels
21-inch Bright 5-hole
aluminum wheels
21-inch Dark 5-hole
aluminum wheels



QUADRIFOGLIO

Select Standard Equipment:

MECHANICAL

PDI 2.9L Twin-Turbocharged V6
505 hp and 443 lb-ft torque
8-speed automatic transmission
Q4 All-Wheel Drive (AWD)

EXTERIOR

20-inch Bright 5-hole
aluminum wheels
255/45R20 and rear 285/40R20
high-performance tires
Unique front and rear fascias
Dynamic dual-mode quad exhaust
Brembo® high-performance brakes
Anodized calipers

INTERIOR

Sport leather/Alcantara® seats
14-way power front seats, including
4-way lumbar and power bolsters
and manual thigh support
Steering-column-mounted
aluminum paddle shifters
Quadrifoglio-specific steering
wheel with Red push-button start
Perforated leather shifter
Genuine carbon fiber interior trim
Leather-wrapped dash and upper
door trim with accent stitching
Aluminum sport pedals
and footrest
Unique Bright door sill plate
Laminated glass

TECHNOLOGY

Front/Rear Park Assist Sensors¹⁰
8.8-inch multi-touch display
with navigation
7-inch Thin Film Transistor
(TFT) cluster
AM/FM/HD/MP3/Auxiliary-In/
Bluetooth®/3 USBs
Apple CarPlay^{®2}/Android Auto^{TM4}/
6-month SiriusXM^{®16}
trial subscription
Rotary controller
Forward Collision Warning with
Full-Speed Stop⁵
Harman Kardon® premium
audio system
Blind spot detection¹¹
Exterior auto-dimming mirrors
Alfa DNA Pro Drive Mode Selector
with Race Mode
Torque vectoring rear differential
Independent adaptive
damping suspension

OPTIONS/PACKAGES

Sparco® racing seats
Active Assist 2 Package
Carbon Package
Dual-pane sunroof
Nero Edizione Package
Premium Package
Colored calipers (Red/Black/Yellow)
Gloss Black roof rails

Hands-free power liftgate
Wireless charging pad
20-inch Dark 5-hole
aluminum wheels
255/45R20 285/40R20
all-season tires
21-inch Dark 5-hole
aluminum wheels

21-inch Silver 5-hole
aluminum wheels
255/40R21 all-season
performance tires
255/40R21, 285/35R21
three-season performance tires







20-inch Bright 5-hole aluminum wheels
Standard on Quadrifoglio



20-inch Dark 5-hole aluminum wheels
Available on Quadrifoglio



21-inch Dark 5-hole aluminum wheels
Available on Quadrifoglio



21-inch Silver 5-hole aluminum wheels
Available on Quadrifoglio



21-inch Dark 5-hole aluminum wheels
Available on Ti Sport



21-inch Bright 5-hole aluminum wheels
Available on Ti and Ti Sport



20-inch Miron Black Sport aluminum wheels
Included with Nero Edizione Package on
Stelvio Sprint (RWD), Ti and Ti Sport



20-inch Sport aluminum wheels
Available on Ti and Ti Sport



20-inch Sport 5-hole aluminum wheels
Standard on Ti Sport



19-inch Sport 5-hole aluminum wheels
Included with Nero Edizione Package on Stelvio Sprint



19-inch Polished Y-spoke aluminum wheels
Standard on Ti



19-inch Bright 10-spoke aluminum wheels
Included with Ti Lusso Package



18-inch Dark 5-spoke aluminum wheels
Standard on Stelvio Sprint



18-inch Polished Double Y-spoke aluminum wheels
Available on Stelvio Sprint



Silver 4-piston brake calipers
Standard on Stelvio Sprint and Ti



Yellow 4-piston brake calipers
Available



Black 4-piston brake calipers
Available



Black 6-piston anodized brake calipers
Standard on Quadrifoglio



Red 4-piston
brake calipers
Available



ALFA WHITE

ALFA ROSSO

MONTECARLO BLUE METALLIC

SILVERSTONE GRAY METALLIC

VULCANO BLACK METALLIC

MISANO BLUE METALLIC

VERDE VISCONTI METALLIC

VESUVIO GRAY METALLIC

STROMBOLI GRAY METALLIC

LUNARE WHITE METALLIC

ANODIZED BLUE METALLIC

ROSSO COMPETIZIONE TRI-COAT

TROFEO WHITE TRI-COAT

1,2,3

1,2,3,4

1,2,3,4

1,2,3,4

1,2,3,4

1,2,3,4

1,2,3

1,2,3,4

1,2,3

1,2,3

1,2,3

2,3,4

2,3,4

1. Stelvio Sprint 2. Ti 3. Ti Sport 4. Quadrifoglio

STELVIO SPRINT AND Ti



Ice leather trim
(Ice/Ice interior)

Red leather trim
(Black/Red interior)



Chocolate leather trim
(Black/Chocolate interior)



Black leather trim with
Dark Gray accent stitching
(Black or Black/Ice interior)



Ti SPORT AND CARBON PACKAGE

Black performance Sport leather trim
with Dark Gray accent stitching
(Black or Black/Ice interior)

Red performance
Sport leather trim
(Black/Red interior)

Chocolate performance
Sport leather trim
(Black/Chocolate interior)

Ti LUSO PACKAGE
Crema luxury leather trim
with Cannelloni design
(Black/Crema interior)



QUADRIFOGLIO



Black leather trim and Alcantara®
with Dark Gray accent stitching
(Black interior)



Black leather trim and Alcantara
with Red accent stitching
(Black or Black/Red interior)



Black leather trim and Alcantara
with Green and White accent stitching
(Black or Black/Ice interior)

QUADRIFOGLIO SPARCO® RACING SEATS

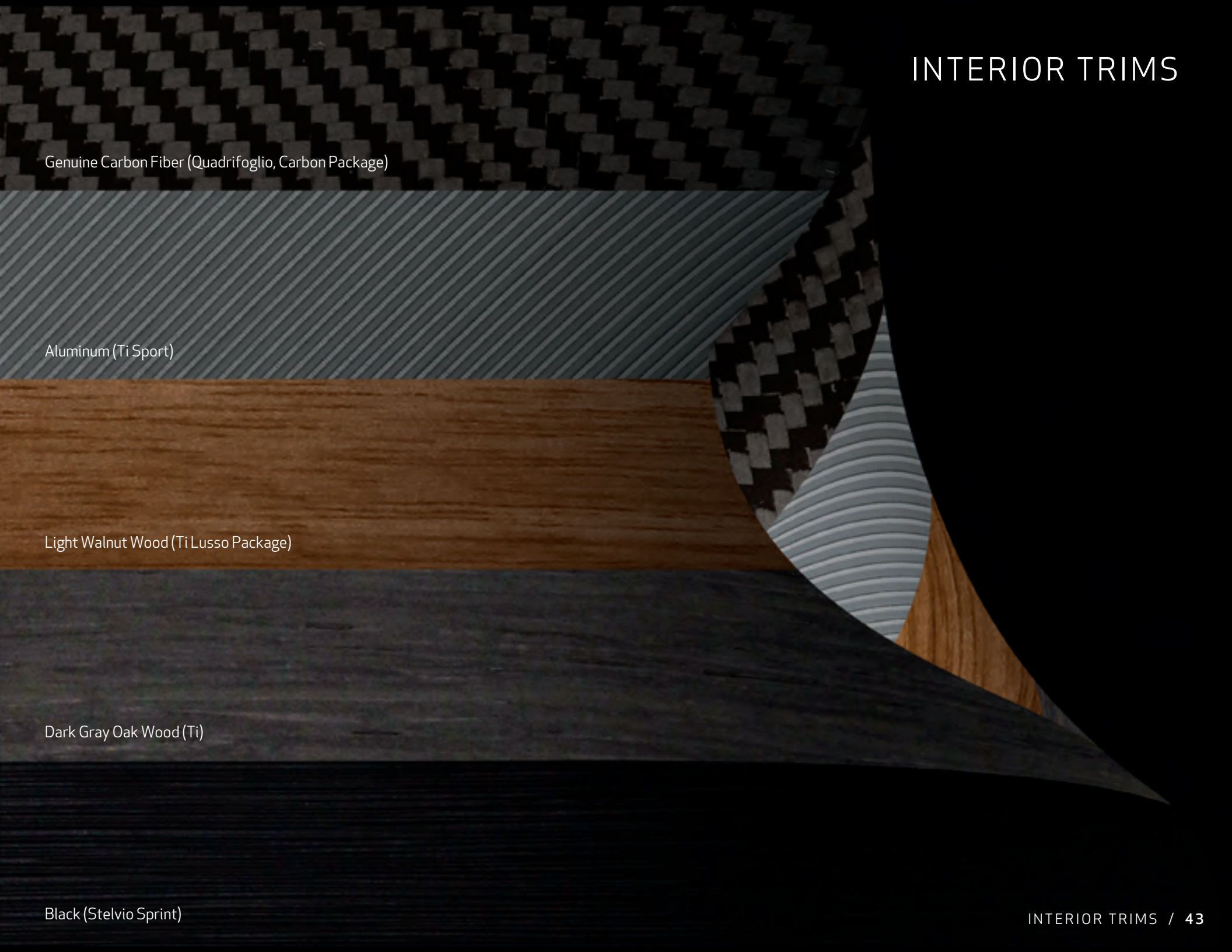
Available Black leather trim and Alcantara® with Dark Gray accent stitching (Black interior)

Available Black leather trim and Alcantara with Red accent stitching (Black or Black/Red interior)

Available Black leather trim and Alcantara with Green and White accent stitching (Black or Black/Ice interior)



INTERIOR TRIMS

A graphic showing four horizontal bands of interior trim materials. From top to bottom: a black carbon fiber weave, a blue-gray aluminum with diagonal lines, a light brown wood grain, and a dark gray wood grain. On the right side, a circular cutout reveals a layered view of these materials, showing the carbon fiber on top, followed by the aluminum, then the light wood, and finally the dark wood at the bottom.

Genuine Carbon Fiber (Quadrifoglio, Carbon Package)

Aluminum (Ti Sport)

Light Walnut Wood (Ti Lusso Package)

Dark Gray Oak Wood (Ti)

Black (Stelvio Sprint)

THE SPIRIT OF GREAT DESIGN EXTENDS BEYOND THE STEERING WHEEL

Choose from a curated collection of Alfa Romeo merchandise.



Men's Race-Inspired 1/4-Zip



Race-Inspired Cap



Quadrifoglio Scarf



Tumbler



TUMI® International
Carry-On Packing Case



Ultimate Ears™ Boom 3 Speaker

shopalfaromeousa.com



The mechanics of emotion

STELVIO

(1) Always drive carefully, consistent with conditions. Always wear your seat belt and obey traffic laws. (2) Requires compatible iPhone. See dealer for phone compatibility. Data plan rates apply. Vehicle user interface is a product of Apple. Apple CarPlay is a trademark of Apple Inc. iPhone is a trademark of Apple Inc., registered in the US and other countries. Apple terms of use and privacy statements apply. (3) Requires an iPhone with Siri. Certain features are not available while the vehicle is in motion. iPhone must be within active cellular range. Customer's existing iPhone data rates apply to Internet-supported features. (4) To use Android Auto on your phone screen, you'll need an Android phone running 5.0 or higher and the Android Auto App. Android and Android Auto are trademarks of Google LLC. (5) This system is an alert system for the front of the vehicle. It is not a substitute for active driver involvement. The driver must remain aware of traffic conditions and be prepared to use the brakes to avoid collisions. (6) Always sit properly in designated seating positions with seat belts securely fastened at all times. (7) This system is a driver convenience system, not a substitute for active driver involvement. The driver must remain aware of traffic conditions and be prepared to use the brakes to avoid collisions. (8) This system is a driver convenience system, not a substitute for active driver involvement. The driver must remain aware of traffic conditions and maintain control of the vehicle. (9) Always check entire surroundings visually before proceeding. (10) Always look before proceeding. An electronic drive aid is not a substitute for conscientious driving. Always be aware of your surroundings. (11) Always check visually for vehicles prior to changing lanes. (12) Traffic Sign Recognition is not a substitute for safe and attentive driving. Factors including weather and condition of the traffic sign can impact recognition and display of the sign. Always check traffic signs visually while driving. (13) HAS requires the driver to keep his or her hands on the steering wheel at all times. This system is a driver convenience system, not a substitute for active driver involvement. The driver must remain aware of traffic conditions and maintain control of the vehicle. (14) Traffic Jam Assist requires the driver to keep his or her hands on the steering wheel at all times. This system is a driver convenience system, not a substitute for active driver involvement. The driver must remain aware of traffic conditions and maintain control of the vehicle. (15) Check state and local laws regarding the use of remote start systems. (16) Your service will automatically stop at the end of your trial subscription unless you decide to continue service. If you do not wish to enjoy your trial subscription, you can cancel it by calling the number below. **If you decide to continue service after your trial subscription, the subscription plan you choose will automatically renew thereafter and you will be charged according to your chosen payment method at then-current rates.** Fees and taxes apply. Please see our Customer Agreement at www.siriusxm.com for complete terms and how to cancel, which includes calling us at 1-866-635-2349. All fees, content and features are subject to change.

©2020 FCA US LLC. All Rights Reserved. Alfa Romeo is a registered trademark and Alfa Link is a trademark of FCA Group Marketing S.p.A., used with permission.

Alcantara is a registered trademark of Alcantara S.p.A. Bluetooth is a registered trademark of Bluetooth SIG, Inc. Brembo is a registered trademark of Freni Brembo SpA. Bridgestone is a registered trademark of Bridgestone Corporation. Continental Tire is a registered trademark of Continental Tire The Americas, LLC. Formula 1 and related marks are registered trademarks of Formula One Licensing BV and the Formula One group of companies. Harman Kardon and Logic 7 are registered trademarks of Harman International Industries, Inc. Sirius, XM and all related marks and logos are registered trademarks of SiriusXM Radio Inc. and its subsidiaries. Sparco is a registered trademark of Sparco S.p.A. Facebook and logo are registered trademarks of Facebook, Inc. The Twitter logo is a service mark of Twitter, Inc. Instagram and logo are registered trademarks of Instagram, Inc. Google, Google Maps, Google Play, Android, Android Auto, YouTube, YouTube Music, Waze and other related marks and logos are trademarks of Google LLC. Apple, Apple CarPlay, Apple Maps, Apple Music, iPhone and Siri are registered trademarks and iOS is a trademark of Apple Inc. Pirelli is a registered trademark of Pirelli S.p.A. Audible is a registered trademark of Audible, Inc. TUMI is a registered trademark of Tumi, Inc. Ultimate Ears is a trademark of Logitech Europe S.A.

This brochure is a publication of FCA US LLC. All product illustrations and specifications are based upon current information at the time of publication approval. FCA US LLC reserves the right to make changes from time to time, without notice or obligation, in prices, specifications, colors and materials, and to change or discontinue models which are considered necessary to the purpose of product improvement or for reasons of design and/or marketing.



@alfaromeousa