

2022

# TUCSON





# How the best gets even better.

Topping the industry's rankings in numerous quality surveys has helped Hyundai Tucson become the best-selling SUV in our lineup. But you won't find us resting on our laurels. Instead, we question every assumption about SUVs – all to ensure the all-new Tucson is the best Tucson we've ever built.

Since what really matters is finding the perfect SUV for you, we're launching the 2022 Tucson with two new Smartstream engines and three distinct models: Tucson, Tucson N Line and our very first Tucson Hybrid. All three share the advanced design language of Hyundai, expressed in the sensuous sportiness of a bold stance and perfect proportions.

A kinetic energy is reflected in the jewel-like surfaces that shape its stunning form. The most exciting design element? A dazzling cluster of

Daytime Running Lights projected from within the new grille. Revealed only when illuminated, they are certain to become the Tucson's unmistakable signature.

Hyundai designers also gave the new Tucson an equally stunning interior. Step inside, and you enter a space defined by the interplay of sensuous shapes and elegant new materials.

And because the 2022 Tucson is longer, wider and taller than the previous generation, that space is filled with more of what you want. More room for both people and cargo. More connectivity and convenience technologies.

We've even added more features to Tucson's award-winning safety engineering. Now *that's* how the best gets even better.







<sup>1</sup>EPA estimates for comparison only. Mileage may vary. Your actual mileage will vary with options, driving conditions, driving habits and the vehicle's condition. <sup>2</sup>Towing capacity with trailer brakes.

TUCSON N Line in Titan Gray

## Wield your power.

Two new engines power the all-new Tucson. On Tucson and Tucson N Line models, a more potent Smartstream 2.5L engine is paired with an 8-speed automatic transmission. An active air flap in the lower front bumper and an innovation called Idle, Stop & Go help make it super efficient, too: Tucson SE has an EPA-estimated 29 combined MPG rating.<sup>1</sup>

Tucson Hybrid comes standard with HTRAC All Wheel Drive, a 44.2 kW electric motor and a new turbocharged 1.6L engine. Rated at a combined 226 horsepower, the turbo engine's power is controlled by a unique 6-speed automatic transmission. You'll feel its impressive effect with every prodding of the accelerator by your right foot.

Tucson Hybrid corners like it's on rails, too, thanks to a system we call e-Handling. Using Tucson Hybrid's electric motor and Traction Control System, e-Handling maximizes torque at each stage of the vehicle's turning motion. Steer into a corner, and you'll feel the precise steering response and stability.

Beneath the skin, Tucson's unibody is infused with advanced high-strength steel. It's a strong, rigid platform that allows the improved steering and multi-link rear suspension to balance precise handling with a smooth, quiet ride. And with its 2,000-pound towing capacity, Tucson has the power to let you trailer your weekend warrior toys.<sup>2</sup>



Normal/Sport/Smart/Snow drive modes



Electronic push-button gear selection



HTRAC All Wheel Drive



TUCSON Hybrid Limited in Deep Sea





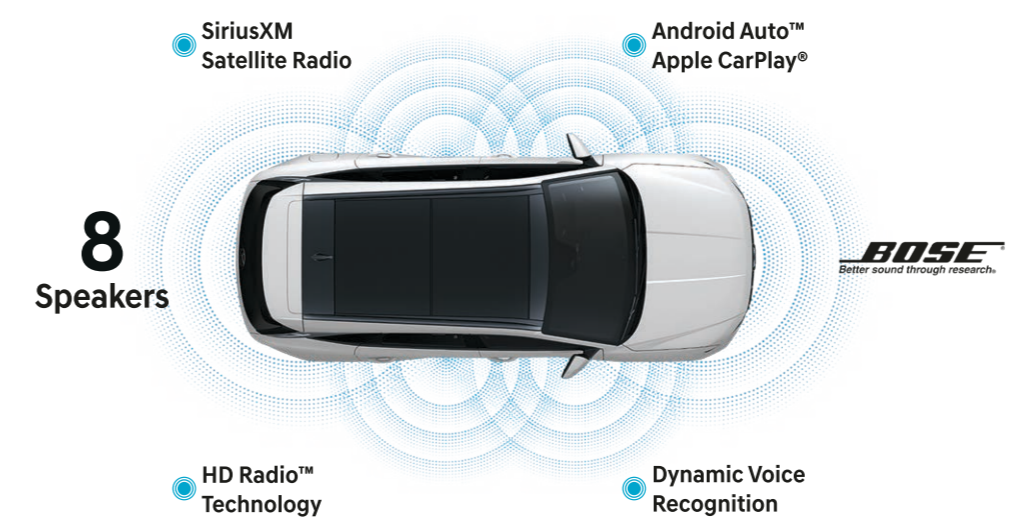
## Wherever you travel, you'll be on easy street.

It starts with how Tucson effortlessly eases into and out of tight parking spaces. Press a button on your Smart Key, and you can help your Tucson negotiate tricky parking spaces without having to be inside the vehicle.<sup>1</sup>

Tucson's door handles can sense your Smart Key fob,<sup>2</sup> or the Hyundai Digital Key on your compatible smartphone,<sup>3</sup> and let you enter with a mere touch. You can also unlock your Tucson remotely using the MyHyundai app.<sup>4</sup> However you choose to open the driver's door, the sense of convenience continues once you're seated inside.

As the driver, you're kept informed by an available 10.25" digital instrument cluster display. Touchscreen controls for the available Bose® audio system, capacitive touch climate controls and a new multi-air mode that diffuses airflow throughout the interior combine to create the perfect environment.

More than an interior filled with available features like heated/ventilated front seats or heated 2nd-row seats, this environment eases you into feeling a sense of openness and serenity. It's not imaginary: Tucson offers 2nd-row passengers class-leading legroom.<sup>5</sup> Versatile remote-release folding 2nd-row seats and an available hands-free smart liftgate give you access to a larger cargo area and innovative dual-level cargo floor.



Hands-free smart liftgate with auto open



10.25" central split-screen display



Panoramic sunroof



Remote Smart Parking Assist

<sup>1</sup>Remote Smart Parking Assist (RSPA) can remotely help park the vehicle. However, several factors can impact RSPA performance. RSPA may not function correctly if one or more of the parking sensors is damaged, dirty or covered, or if weather conditions (heavy rain, snow or fog) interfere with sensor operation. Always inspect the parking area with your own eyes. See Owner's Manual for further details and limitations. <sup>2</sup>Not available with Tucson SE. <sup>3</sup>The available Hyundai Near Field Communication Digital Key requires a compatible Android smartphone and appropriately equipped 2022 Hyundai Tucson. Not all Android devices are compatible. Tucson vehicle must be equipped with a smart key with push button start, wireless device charging and Audio Video Navigation System 5.0 (or newer) or Display Audio 2.0. Lock and unlock functionality work on the front doors only. See your Owner's Manual for further details and limitations. <sup>4</sup>Requires active Bluelink subscription with Remote package. Not available with Tucson SE. <sup>5</sup>Claim based on comparison of specifications on manufacturer websites.



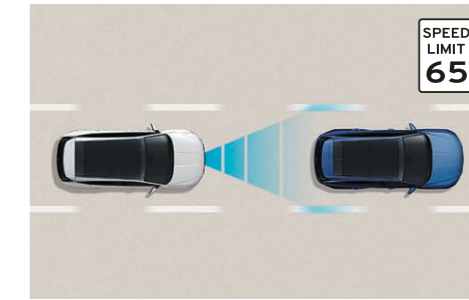
# Drive intelligently.

Even the most cautious drivers can use a little help now and then. Which is why the all-new Tucson is engineered with Hyundai SmartSense, a remarkable suite of advanced safety and convenience technologies.<sup>1</sup> Every 2022 model comes standard with Forward Collision-Avoidance Assist,<sup>2</sup> Lane Following Assist<sup>3</sup> and Driver Attention Warning<sup>4</sup> – innovations designed to alert drivers to potential hazards. And help avoid accidents in the first place.

Available features like Blind-Spot Collision-Avoidance Assist<sup>5</sup> and Rear Cross-Traffic Collision-Avoidance Assist<sup>6</sup> guard your flanks, while an array of Blind-Spot View Monitor<sup>7</sup> and Surround View Monitor<sup>8</sup> cameras give you a full 360-degree sense of what's happening around your vehicle. So whenever you and your new Tucson make your next move, you'll know it's a smart one.

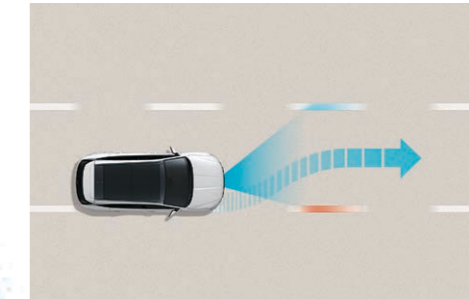


**2021 Hyundai Tucson**  
with Forward Collision-Avoidance Assist and specific headlights<sup>12</sup>



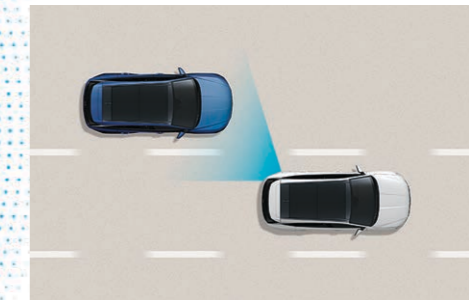
## Highway Driving Assist

Acting as your copilot on the highway, this feature helps keep you centered in your lane while maintaining a set speed and distance from the vehicle in front. It uses navigation map data to automatically adjust for changing speed limits and reduce your speed when it detects you're approaching a curve in the road.<sup>10</sup>



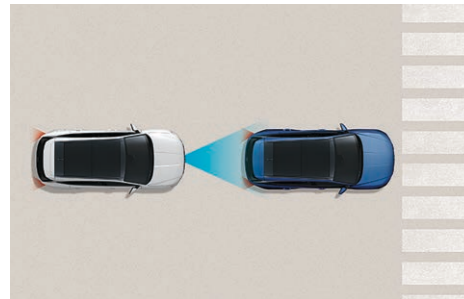
## Lane Following Assist

Using the front-view camera to detect lane markers on the road, this feature offers subtle steering corrections to help keep you centered in your lane. Even when lane markings aren't visible, your Tucson can determine a virtual path based on movements of the preceding vehicle.



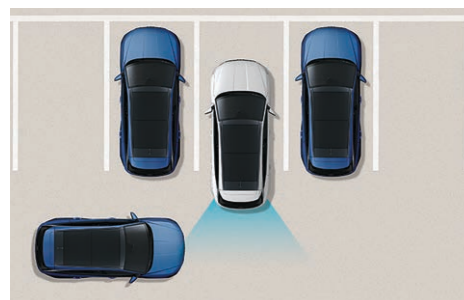
## Blind-Spot Collision-Avoidance Assist

If your Tucson detects a vehicle in your blind spot while your turn signal is on, it alerts the driver and applies light braking before you change lanes to help avoid a collision. It can also detect vehicles as far as two lanes over to help prevent collisions when exiting a parallel parking spot.



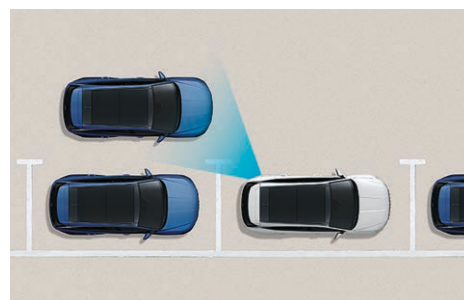
## Forward Collision-Avoidance Assist

When the forward camera and/or radar detect a vehicle or pedestrian in your path, or detect oncoming cars when turning left in an intersection, your Tucson warns you of a potential collision. If you don't begin stopping in time, the system may automatically apply emergency braking.



## Rear Cross-Traffic Collision-Avoidance Assist

Backing out of a parking space and wondering whether there's cross traffic coming your way? This feature warns you of another vehicle approaching from the side. If necessary, your Tucson automatically applies braking to help prevent a collision.



## Safe Exit Warning

After parking your Tucson, Safe Exit Warning issues an alert when it detects a vehicle approaching from behind, letting the driver know it may not be safe for passengers to open the street-side door.<sup>9</sup>

## << SmartSense Around Town

## SmartSense On The Highway >>



<sup>1</sup>Safety features vary by model and trim level. For details, refer to the Features chart in the back of this brochure or visit HyundaiUSA.com. <sup>2</sup>Forward Collision-Avoidance Assist with Pedestrian Detection is intended to be a supplement to safe driving practices. The system is not designed to detect certain stationary objects such as trees or poles, and may not detect all vehicles or pedestrians under certain conditions. The system is a driver assistance system and is not a substitute for safe driving. The driver is responsible for being attentive and maintaining control of the vehicle, and should not wait for the system's alerts before braking as there may not be sufficient time to brake safely. See Owner's Manual for further details and limitations. <sup>3</sup>Lane Following Assist (LFA), when actively engaged with Smart Cruise Control or Highway Driving Assist, helps keep your vehicle centered in its lane when the lane markings are clearly visible on the road. Lane Following Assist will not work under all circumstances and will not prevent loss of control. Lane Following Assist is a supplemental assist, and does not replace the need for extreme care and attention by the driver. See Owner's Manual for further details and limitations. <sup>4</sup>It is the driver's responsibility to remain alert at all times. Driver Attention Warning is only a warning to inform the driver of a potential lack of driver attention or drowsiness. It does not detect and provide an alert in every situation. See Owner's Manual for further details and limitations. <sup>5</sup>Blind-Spot Collision-Avoidance Assist (BCA) helps warn you of other cars in the blind spot region and may apply braking to help prevent an unsafe lane change. It also helps prevent collisions when exiting parallel parking spots by alerting the driver to a potential hazard. Never rely exclusively on BCA, as it is not a substitute for attentive driving. Always

look over your shoulder and use your mirrors to confirm clearance. There are limitations to the function, detection, range and clarity of the system. BCA may not function correctly if one or more of the parking sensors is damaged, dirty or covered, or if weather conditions (heavy rain, snow or fog) are interfering with sensor operation. See Owner's Manual for further details and limitations. <sup>6</sup>Rear Cross-Traffic Collision-Avoidance Assist (RCCA) is designed to notify drivers of approaching cross traffic behind their vehicle. When another vehicle is detected while you are backing out of a parking spot, it provides audible and visual display warnings and applies braking if it senses a collision is imminent. RCCA is active when the vehicle is in reverse gear and backing at a speed less than 6 mph. It only engages during the first activation of reverse gear from park and may not detect all vehicles, depending on the size, angle, distance and speed of the other vehicle. Never rely exclusively on RCCA. Always look over your shoulder and use your mirrors to confirm rear clearance. There are limitations to the function, detection, range and clarity of the system. See Owner's Manual for further details and limitations. <sup>7</sup>The Blind-Spot View Monitor (BVM) assists the driver in changing lanes by providing a live view of the blind spots on either side of the vehicle and an audible alert if another vehicle is detected. Turn signal must be activated, and other system limitations apply. Do not rely exclusively on BVM. It is the driver's responsibility to be aware of the surroundings and ensure it is clear before changing lanes or directions. See Owner's Manual for more information. <sup>8</sup>Surround View Camera System (SVCS) is a parking support system. SVCS cannot completely eliminate blind spots, may not detect every object and does not warn of moving objects. Always check your surroundings before moving your vehicle. See Owner's Manual for further details. <sup>9</sup>When the vehicle is parked, Safe Exit Warning (SEW) can alert occupants planning to exit the vehicle when a vehicle is approaching from behind. SEW does not work in all situations and is not a substitute for driver or passenger attentiveness. Always be aware of your surroundings and attentive of approaching vehicles. See Owner's Manual for further details and limitations. <sup>10</sup>Limited trim only. Highway Driving Assist (HDA) is for highway use only and can help maintain a safe distance from the vehicle ahead while keeping your vehicle centered in its lane when lane markings are clearly visible on the road. HDA should not be used in poor weather, heavy or varying traffic, or on winding or slippery roads. HDA will not work under all circumstances and will not prevent loss of control. Driver remains responsible to slow or stop the vehicle to avoid a collision. See Owner's Manual for further details and limitations. <sup>11</sup>Government 2021 5-Star Safety ratings are part of the National Highway Traffic Safety Administration's (NHTSA) New Car Assessment Program (nhtsa.gov). <sup>12</sup>To qualify for 2021 TOP SAFETY PICK, a vehicle must earn good ratings in the driver-side and passenger-side small overlap front, moderate overlap front, side, roof strength and head restraint tests. It also must earn an advanced or superior rating for vehicle-to-vehicle and vehicle-to-pedestrian front crash prevention and an acceptable or good headlight rating. For details, visit www.iihs.org.





# Upgrade your mobile device with Hyundai Bluelink.

To keep you plugged into your digital life on the go, Tucson is available with the Hyundai Bluelink® Connected Car System, complimentary for your first three years.<sup>1</sup> Our MyHyundai app turns your smartphone or Amazon Echo®/Google Home™ device into a remote control that can start your Tucson's engine and climate controls – including heated and ventilated seats – before you walk out the door.<sup>2</sup>

Starting your Tucson remotely or with the Hyundai Digital Key also tunes radio presets and navigation system settings ahead of time using your Bluelink personal profile. Want to remotely check to see if you've left your doors unlocked or the lights on? Just consult your MyHyundai app.<sup>3</sup>

Now check this out: Tucson's available 10.25" touchscreen navigation features a split-screen that lets you view both maps and music at a glance. Junction view lane guidance and subscription-free traffic flow and incident data help alleviate some of the stresses of commutes. And how easy is this? With available Dynamic Voice Recognition, you can activate climate controls, select SiriusXM channels and more using simple voice commands.<sup>4</sup>

Tucson also features wireless Android Auto™ and Apple CarPlay®.<sup>5</sup> And its Bluetooth® music streaming lets you connect two phones to the audio system simultaneously. To keep everyone powered up without the clutter of cords, Tucson is available with wireless device charging.<sup>6</sup>



### Automatic Emergency Assistance

Bluelink Connected Care offers 24/7 SOS Emergency Assistance as well as Automatic Collision Notification that calls for help if you are in an accident where your vehicle's airbags deploy.<sup>7</sup>



### On-Demand Diagnostics

Run vehicle diagnostics from your touchscreen, report issues at the press of a button and receive Monthly Vehicle Health Reports or maintenance reminders by email.



### Driver Profile Management

Save your navigation searches, radio presets and instrument cluster menu settings to your Bluelink account, and they can be remotely updated and pushed to your Tucson.



### Remote Vehicle Controls

Your smartphone, wearable device or smart speaker can be used to remotely start your Tucson's engine, set the cabin temperature, unlock the doors and more.



### Destination Send-to-Car

Use your smartphone to find restaurants or points of interest that may not be updated on your vehicle's maps, then send the destination to your Tucson Limited's navigation system.<sup>8</sup>



### Remote Vehicle Status

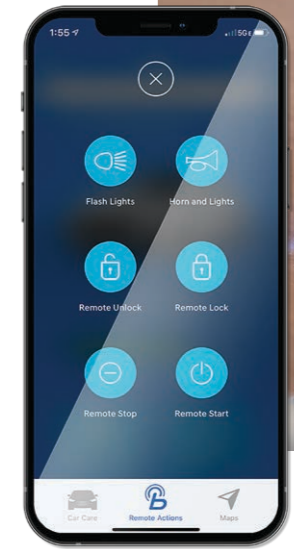
Wondering how much fuel is in your tank? If your vehicle's liftgate is open or the doors are unlocked? Your MyHyundai app knows the answers to these questions and more.



Hyundai Digital Key



Wireless device charging



Amazon Echo integration



<sup>1</sup>The 2022 Hyundai Tucson includes 3 years of the Bluelink Connected Care, Remote and Guidance (factory-equipped navigation required) packages. All trials require an active Bluelink subscription agreement subject to the Connected Services Terms and Conditions. Three-year term starts from the new vehicle date-of-first-use, is available for new vehicle purchases and leases, and is transferable to subsequent owners subject to the Terms and Conditions. Only use Bluelink and corresponding devices when safe to do so. Cellular and GPS coverage is required. Features, specifications and fees are subject to change. For further details and limitations, visit HyundaiUSA.com or your authorized Hyundai dealer. <sup>2</sup> Requires active Bluelink subscription with Remote package. Amazon, Alexa and all related logos and motion marks are trademarks of Amazon.com, Inc. or its affiliates. Google Assistant and Google Home are trademarks of Google LLC. <sup>3</sup> Requires active Bluelink subscription with Remote package. <sup>4</sup> Dynamic Voice Recognition varies by unit. Speak in a normal voice and minimize background noise for best results. See Owner's Manual for further details and limitations. <sup>5</sup> Not available with Limited models. Apple CarPlay® is a registered trademark of Apple Inc. Android Auto™ is compatible with Android™ phones running Android 5.0 or higher. Android Auto may not be available on all devices and is not available in all countries or regions. Additional apps may be required. Android and Android Auto are trademarks of Google LLC. <sup>6</sup> Qi wireless charging function is based on smartphone compatibility and/or specific accessory cases. <sup>7</sup> Bluelink agents will contact existing emergency service responders. <sup>8</sup> Requires active Bluelink subscription with Guidance package and vehicle equipped with navigation system.



## TUCSON SE

Smartstream 2.5L  
GDI/MPI 4-Cylinder Engine

**hp** 187  
**lb-ft** 178



### Popular Features

- 8" touchscreen Display Audio system
- Wireless Android Auto™/Apple CarPlay®
- LED Daytime Running Lights and headlights
- Forward Collision-Avoidance Assist with Pedestrian Detection
- Rear Occupant Alert
- 17" alloy wheels

## TUCSON SEL

Smartstream 2.5L  
GDI/MPI 4-Cylinder Engine

**hp** 187  
**lb-ft** 178



### Popular Features

- Proximity Key entry with push button start
- Blind-Spot Collision-Avoidance Assist
- Rear Cross-Traffic Collision-Avoidance Assist
- Bluelink® Connected Car System
- 8-way power driver seat with 2-way lumbar support
- Roof side rails

Exterior Dimensions	TUCSON & HYBRID
Wheelbase	108.5 in
Overall Length	182.3 in
Overall Width	73.4 in
Overall Height with roof rails	65.6 in

## TUCSON N Line

Smartstream 2.5L  
GDI/MPI 4-Cylinder Engine

**hp** 187  
**lb-ft** 178



### Popular Features

- N Line unique front and rear fascias
- N Line grille and rear spoiler
- N Line sport combination seats
- Alloy sport pedals and black headliner
- Bose® premium audio system
- Unique 19" alloy wheels

## TUCSON Limited

Smartstream 2.5L  
GDI/MPI 4-Cylinder Engine

**hp** 187  
**lb-ft** 178



### Popular Features

- 10.25" high-resolution touchscreen navigation system
- Blind-Spot View Monitor and Surround View Monitor
- Remote Smart Parking Assist
- Heated 2nd-row seats and steering wheel
- Parking Distance Warning – Forward & Reverse
- 19" alloy wheels

Interior Dimensions	TUCSON	HYBRID
Headroom – front / 2nd row (w/o sunroof)	40.1/39.5 in	40.1/39.5 in
Headroom – front / 2nd row (w/ sunroof)	38.3/39.5 in	N/A
Headroom – front / 2nd row (w/ pano sunroof)	38.1/39.0 in	38.1/38.7 in
Legroom – front / 2nd row	41.4/41.3 in	41.1/41.3 in

## TUCSON SEL Convenience Package

- Hands-free smart liftgate with auto open
- 19" alloy wheels
- Power sunroof
- 10.25" digital instrument cluster display
- Wireless device charging and Hyundai Digital Key
- Ambient LED interior lighting
- LED overhead lighting
- Auto-dimming rearview mirror with HomeLink®
- Leather-wrapped steering wheel and shift knob
- Dual automatic temperature control
- Auto-defogging windshield
- Ultrasonic Rear Occupant Alert
- Soft-touch door panels and fabric

## TUCSON SEL Premium Package

- Premium LED Daytime Running Lights
- Dark chrome accent front grille and Hyundai logo
- Bose® 8-speaker premium audio system
- Leather-trimmed seats
- Ventilated front seats

## HTRAC All Wheel Drive Option

- HTRAC All Wheel Drive

## TUCSON

EPA MPG Estimates (City/Highway/Combined)<sup>1</sup>

**26/33/29 MPG** | FWD  
8-Speed A/T

**24/29/26 MPG** | AWD  
8-Speed A/T

Interior Dimensions	TUCSON	HYBRID
Shoulder Room – front / 2nd row	57.6/56.0 in	57.6/56.0 in
Passenger Volume	108.2 cu ft	107.9 cu ft
Cargo Capacity – 2nd row seats up / down	38.7/74.8 cu ft	38.7/74.5 cu ft
Total Interior Volume	146.9 cu ft	146.6 cu ft

## TUCSON Hybrid Blue

Smartstream 1.6L Turbo  
GDI 4-Cylinder Hybrid Engine

**net hp** 226  
**lb-ft** 195



### Popular Features

- HTRAC All Wheel Drive
- Blind-Spot Collision-Avoidance Assist
- Rear Cross-Traffic Collision-Avoidance Assist
- Bluelink® Connected Car System
- Heated front seats and heated side mirrors
- Dual 2nd-row USB outlets

## TUCSON Hybrid SEL Convenience

Smartstream 1.6L Turbo  
GDI 4-Cylinder Hybrid Engine

**net hp** 226  
**lb-ft** 195



### Popular Features

- Hands-free smart liftgate with auto open
- Panoramic sunroof
- 10.25" digital instrument cluster display
- Wireless device charging and Hyundai Digital Key
- Ultrasonic Rear Occupant Alert
- 19" alloy wheels

## Wheels



SE / SEL  
17" Alloy Wheel



Blue  
17" Alloy Wheel



N Line  
19" Alloy Wheel



Hybrid SEL  
Convenience /  
Limited  
19" Alloy Wheel

## TUCSON Hybrid Limited

Smartstream 1.6L Turbo  
GDI 4-Cylinder Hybrid Engine

**net hp** 226  
**lb-ft** 195



### Popular Features

- 10.25" high-resolution touchscreen navigation system
- Blind-Spot View Monitor
- Surround View Monitor
- 8-way power passenger seat
- Leather-trimmed seats
- Heated 2nd row seats
- Ventilated front seats
- Memory driver seat
- Heated steering wheel
- Dynamic Voice Recognition
- Remote Smart Parking Assist
- Highway Driving Assist
- Premium LED Daytime Running Lights
- Navigation-based Smart Cruise Control with curve control

## TUCSON Hybrid

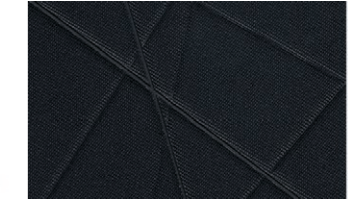
EPA MPG Estimates (City/Highway/Combined)<sup>1</sup>

**38/38/38 MPG** | Blue  
AWD 6-Speed A/T

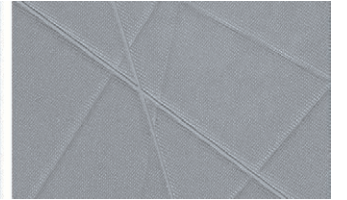
**37/36/37 MPG** | SEL Convenience / Limited  
AWD 6-Speed A/T

<sup>1</sup>EPA estimates for comparison only. Mileage may vary. Your actual mileage will vary with options, driving conditions, driving habits and the vehicle's condition. <sup>2</sup>Not available on Tucson Hybrid. <sup>3</sup>Not available on Tucson Hybrid or Tucson N Line models.

## Interior Colors



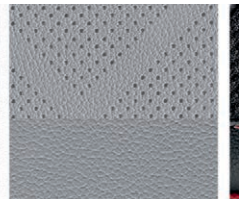
SE / SEL Black Cloth



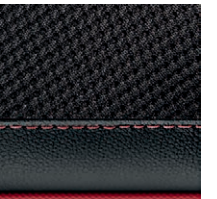
SE / SEL Gray Cloth



SEL Premium /  
Limited  
Black Leather

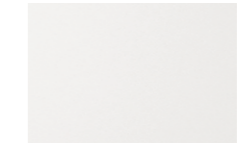


SEL Premium /  
Limited  
Gray Leather

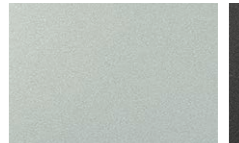


N Line  
Black Sport  
Combination

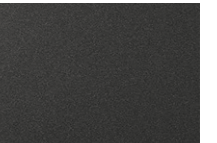
## Exterior Colors



Quartz White /  
White Pearl



Shimmering Silver



Portofino Gray /  
Titan Gray<sup>2</sup>



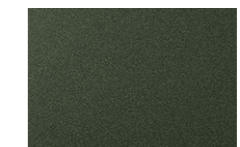
Phantom Black /  
Ash Black



Calypso Red<sup>3</sup>



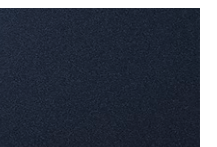
Intense Blue<sup>3</sup>



Amazon Gray



Red Crimson  
N Line only



Deep Sea  
Hybrid only



## TUCSON / TUCSON Hybrid

Power & Handling	SE	SEL	N Line	Ltd	Blue	SEL Conv	Ltd
187 hp/178 lb-ft, Smartstream 2.5L GDI/MPI 4-cylinder engine	●	●	●	●	–	–	–
226 net hp, Smartstream 1.6L Turbo GDI 4-cylinder hybrid engine with 44.2 kW high-power density motor	–	–	–	–	●	●	●
Idle Stop & Go	●	●	●	●	–	–	–
8-speed automatic transmission with SHIFTRONIC®	●	●	●	●	–	–	–
6-speed automatic transmission with paddle shifters	–	–	–	–	●	●	●
Shift-by-Wire electronic push-button gear selection	–	–	–	●	●	●	●
Drive Mode Select / Downhill Brake Control	●	●	●	●	●	●	●
HTRAC All Wheel Drive	○	○	○	○	●	●	●
Electric Parking Brake with Automatic Vehicle Hold	●	●	●	●	●	●	●
2,000-lb towing capacity and trailer pre-wiring	●	●	●	●	●	●	●
Exterior Features	SE	SEL	N Line	Ltd	Blue	SEL Conv	Ltd
Automatic headlights with High Beam Assist	●	●	●	●	●	●	●
LED Daytime Running Lights	●	●	●	●	●	●	●
LED headlights	●	●	●	●	●	●	●
LED taillights	–	●	●	●	●	●	●
N Line unique front and rear fascias	–	–	–	–	–	–	–
N Line grille and rear spoiler	–	–	●	–	–	–	–
Dark chrome front and rear bumper molding	–	–	–	●	–	–	●
Silver painted front and rear skid plates	–	–	●	●	–	–	●
Dark chrome accent front grille and Hyundai logo	–	●	●	●	–	–	●
Heated side mirrors with LED turn signal indicators	–	●	●	●	●	●	●
Acoustic-laminated windshield and solar front glass	●	●	●	●	●	●	●
Roof side rails	–	●	●	●	●	●	●
Power tilt-and-slide sunroof	–	●	–	–	–	–	–
Panoramic sunroof	–	–	–	●	–	●	●
Hands-free smart liftgate with auto open and adjustable height setting	–	●	●	●	–	●	●
Gloss black window surround and side mirrors	–	–	●	–	–	–	–
Rear privacy glass	–	●	●	●	●	●	●
Interior Features	SE	SEL	N Line	Ltd	Blue	SEL Conv	Ltd
Proximity Key entry with push button start	–	●	●	●	●	●	●
10.25" digital instrument cluster display	–	●	●	●	–	●	●
Tilt-and-telescopic steering wheel with audio, phone and cruise controls	●	●	●	●	●	●	●
8-way power driver seat with 2-way power lumbar support	–	●	●	●	●	●	●
8-way power front passenger seat	–	–	–	●	–	–	●
Leather-wrapped steering wheel and ambient LED interior lighting	–	●	●	●	–	●	●

Interior Features	SE	SEL	N Line	Ltd	Blue	SEL Conv	Ltd
Reclining 60/40 split fold-flat 2nd-row seats with center armrest	●	●	●	●	●	●	●
Leather-trimmed seats and ventilated front seats	–	●	–	●	–	–	●
N Line sport combination seats	–	–	●	–	–	–	–
Heated front seats	–	●	●	●	●	●	●
Heated 2nd-row seats and steering wheel	–	–	–	●	–	–	●
Memory driver seat	–	–	–	●	–	–	●
Dual automatic temperature control and auto-defogging windshield	–	●	●	●	–	●	●
Alloy sport pedals/scuff plates and black headliner	–	–	●	–	–	–	–
Smart Cruise Control with Stop & Go	–	●	●	●	●	●	●
Floor console-mounted 2nd-row seat vents	–	●	●	●	●	●	●
Auto-dimming rearview mirror with HomeLink®	–	●	●	●	–	●	●
Remote Smart Parking Assist	–	–	–	●	–	–	●
Rear View Monitor with Parking Guidance	●	●	●	●	●	●	●
Advanced Safety	SE	SEL	N Line	Ltd	Blue	SEL Conv	Ltd
Forward Collision-Avoidance Assist (FCA) with Pedestrian Detection	●	●	●	●	●	●	●
FCA with Cyclist Detection and Junction Turning Detection	–	●	●	●	●	●	●
Lane Keeping Assist and Lane Following Assist	●	●	●	●	●	●	●
Driver Attention Warning / Rear Occupant Alert	●	●	●	●	●	●	●
Blind-Spot Collision-Avoidance Assist	●	●	●	●	●	●	●
Rear Cross-Traffic Collision-Avoidance Assist	●	●	●	●	●	●	●
Safe Exit Warning	–	●	●	●	●	●	●
Parking Distance Warning – Forward & Reverse	–	–	–	●	–	–	●
Parking Collision-Avoidance Assist – Reverse	–	–	–	●	–	–	●
Highway Driving Assist	–	–	–	●	–	–	●
Navigation-based Smart Cruise Control with curve control	–	–	–	●	–	–	●
Blind-Spot View Monitor and Surround View Monitor	–	–	–	●	–	–	●
Audio & Connected Car Technology	SE	SEL	N Line	Ltd	Blue	SEL Conv	Ltd
8" high-resolution touchscreen AM/FM/HD Radio™ Display Audio system	●	●	●	–	●	●	–
10.25" high-resolution touchscreen navigation system	–	–	–	●	–	–	●
Bose® 8-speaker premium audio system	–	●	●	●	–	–	●
SiriusXM Satellite Radio	–	●	●	●	●	●	●
Android Auto™ and Apple CarPlay® (wireless   wired)	● –	● –	● –	– ●	● –	● –	– ●
Wireless device charging and Hyundai Digital Key	–	●	●	●	–	●	●
Bluelink® Connected Car System (3 years complimentary)	–	●	●	●	●	●	●
Dual USB outlets (front   2nd row)	● –	● ●	● ●	● ●	● ●	● ●	● ●

● Standard ○ Optional ● Starting Summer 2021 ● Convenience Package ● Premium Package – Not Available Ltd=Limited Trim SEL Conv=Hybrid SEL Convenience Trim



TUCSON Limited in Shimmering Silver





Hyundai Hope On Wheels®

Helping Kids Fight Cancer Since 1998



## Hope makes every Hyundai better.

Each time we sell a Hyundai, a portion goes to Hyundai Hope On Wheels® to help find a cure for childhood cancer. Over the last 23 years, Hyundai Hope On Wheels has donated more than \$185 million. Hope is our greatest feature. And it comes standard on every Hyundai. For more information, please visit [HyundaiHopeOnWheels.org](http://HyundaiHopeOnWheels.org).



## America's Best Warranty

**POWERTRAIN LIMITED WARRANTY**

**10** YEARS  
100,000 MILES

**NEW VEHICLE LIMITED WARRANTY**

**5** YEARS  
60,000 MILES

**ANTI-PERFORATION WARRANTY**

**7** YEARS  
UNLIMITED MILES

**24/7 ROADSIDE ASSISTANCE**

**5** YEARS  
UNLIMITED MILES

**HYBRID/ELECTRIC SYSTEM COMPONENTS**

**10** YEARS  
100,000 MILES



Complimentary maintenance includes Hyundai-approved oil and oil filter change (except for electric vehicles and fuel cell electric vehicles) plus tire rotation at normal factory-scheduled intervals for 3 years or 36,000 miles, whichever comes first. This offer valid only for new 2020-2022 Hyundai models purchased or leased on or after February 1, 2020. See your Hyundai dealer for further details and limitations.



Our commitment to Hyundai owners does not end with the transfer of keys. Wherever the road takes you, we've got your back with Hyundai Assurance, an umbrella of services and benefits that includes America's Best Warranty, 24/7 Roadside Assistance, innovative safety and car care features...and more.

See dealer for LIMITED WARRANTY details. Fuel economy estimated by EPA for comparison only. Mileage may vary. While the information contained in this brochure was correct at the time of printing, specifications and equipment can change. Feature comparisons based on competitor information available at the time of printing. No warranty or guarantee is being extended in this brochure, and Hyundai reserves the right to change product specifications and equipment at any time without incurring obligations. Some vehicles are shown with optional equipment. Specifications apply to U.S. vehicles only. Please contact your Hyundai dealer for current vehicle specifications. As part of Hyundai's commitment to a responsible environment, this brochure was printed using paper certified by the Forest Stewardship Council®. FSC® certification helps ensure that the highest social and environmental standards are met in the making of the paper we use, contributing to conservation, responsible management and community-level benefits for people near the forests.

