

Sparkling Beauty - Matchless Performance - and a Wide Range of Selection!

Not only beauty—not only luxury—not only thrilling performance—but an exceptionally wide range of selection distinguishes the new Buick line. There are nineteen luxurious body types on three wheelbase lengths of 116, 121, and 129 inches—a distinctive Buick model for every taste and need. The same incomparable smartness and luxury—the same thoroughly-proved engineering features which have won world-wide recognition for Buick performance, reliability and stamina, characterize each of the nineteen models of this new Buick line. Don't be content with merely viewing Buick's masterpiece bodies. DRIVE the car. Experience the thrilling new elements of power, getaway, swiftness, and stamina which distinguish it from all other automobiles. GET BEHIND THE WHEEL... and get the facts about Buick performance leadership.

The New Buick

SPECIFICATIONS IN BRIEF

Engines—Series 116 (116-inch wheelbase) models, 74 H. P. Buick valve-in-head six-cylinder, triple-sealed. Bore $3\frac{3}{8}$ inches. Stroke $4\frac{5}{8}$ inches. Piston displacement 239 cubic inches. Maximum car speed well over 70 miles an hour. Rear axle ratios—Models 20 and 27—4.9 to 1. Model 25—4.454 to 1. Models 26 and 26S—4.636 to 1. Wheels—wood artillery type, 20-inch rim. Tires 30 x 5.50 inch, low pressure. Gasoline tank capacity—16 gallons. Turning circle—38 feet.

Engines—Series 121 (121-inch wheelbase) and 129 (129-inch wheelbase) models, 90½ H.P. Buick valve-in-head six-cylinder, triple-sealed. Bore $3\frac{3}{8}$ inches. Stroke 5 inches. Piston displacement 309 cubic inches. Maximum car speed well over 75 miles an hour. Rear axle ratios—Models 41, 47, 50, 50L, 51, 57 and 58—4.636 to 1. Models 46, 46S, 48, 49 and 54CC—4.454 to 1. Models 44 and 55—4.077 to 1. Wheels—wood artillery type 20-inch rim. Tires—32 x 6.50 inch low pressure. Gasoline tank capacity—19 gallons. Turning circle, Series 121—42 feet; Series 129—44 feet.

All Models—New positive-pressure gasoline pump; new instrument panel; new steering wheel and controls; new tail lamp, mounted at side; front compartments completely trimmed, rubber mats for front floor. Hydraulic shock absorbers, front and rear; grouped chassis lubrication; position of steering wheel adjustable; vibrator horn; hydrostatic gasoline gauge; water temperature gauge on instrument panel; dual ignition and steering lock; combina-

tion tail lamp, stop lamp, and back-up lamp; four-wheel brakes; four low pressure tires; controllable beam headlights, with control switch on top of steering wheel; dual lighting of instrument panel and front compartment; air cleaner; oil filter; gasoline strainer; crankcase ventilator; new type tire carrier for one tire only, with one extra demountable rim; double screw type jack; high pressure grease gun; tool kit; pump; rear vision mirror.

Closed Models—Adjustable driving seats except in Model 50L; side cowl ventilators; new type luxury seat cushions; nickel-finished foot rest in rear compartments; high grade carpets; double-blade, electric windshield wiper. Model 54CC double-blade wiper, vacuum type (not electrically operated).

Open Models—Full, ventilating windshield, upper part adjustable and whole shield folds forward if desired; side cowl ventilators except on Model 25; special finish, leather upholstery; neat, leather robe straps; natural wood bows for tops; tailored dust cover; side curtains with large pyralin lights, fitting conveniently into large door pockets; rear deck compartments fully trimmed; rubber mats for floor; single-blade vacuum type wiper (not electrically operated).

Special Equipment—Demountable wood, wire, and disc wheels; fender wells for spare tires; special locks and supports for fender well mountings; folding trunk racks; chrome-finished bumpers of special design; spare tires are extra equipment.

Whatever you want
in a
Motor Car
you will find in
BUICK'S
wide range of
body types



BUICK MOTOR COMPANY

Division of General Motors Corporation

FLINT, MICHIGAN

Whatever you want
in a
Motor Car
you will find in
BUICK'S
wide range of
body types



The New Buick

❁ SPECIFICATIONS IN BRIEF ❁

Engines—Series 116 (116-inch wheelbase) models, 74 H. P. Buick valve-in-head six-cylinder, triple-sealed. Bore $3\frac{5}{16}$ inches. Stroke $4\frac{5}{8}$ inches. Piston displacement 239 cubic inches. Maximum car speed well over 70 miles an hour. Rear axle ratios—Models 20 and 27—4.9 to 1. Model 25—4.454 to 1. Models 26 and 26S—4.636 to 1. Wheels—wood artillery type, 20-inch rim. Tires 30 x 5.50 inch, low pressure. Gasoline tank capacity—16 gallons. Turning circle—38 feet.

Engines—Series 121 (121-inch wheelbase) and 129 (129-inch wheelbase) models, 90 $\frac{1}{2}$ H.P. Buick valve-in-head six-cylinder, triple-sealed. Bore $3\frac{5}{8}$ inches. Stroke 5 inches. Piston displacement 309 cubic inches. Maximum car speed well over 75 miles an hour. Rear axle ratios—Models 41, 47, 50, 50L, 51, 57 and 58—4.636 to 1. Models 46, 46S, 48, 49 and 54CC—4.454 to 1. Models 44 and 55—4.077 to 1. Wheels—wood artillery type 20-inch rim. Tires—32 x 6.50 inch low pressure. Gasoline tank capacity—19 gallons. Turning circle, Series 121—42 feet; Series 129—44 feet.

All Models—New positive-pressure gasoline pump; new instrument panel; new steering wheel and controls; new tail lamp, mounted at side; front compartments completely trimmed, rubber mats for front floor. Hydraulic shock absorbers, front and rear; grouped chassis lubrication; position of steering wheel adjustable; vibrator horn; hydrostatic gasoline gauge; water temperature gauge on instrument panel; dual ignition and steering lock; combina-

tion tail lamp, stop lamp, and back-up lamp; four-wheel brakes; four low pressure tires; controllable beam headlights, with control switch on top of steering wheel; dual lighting of instrument panel and front compartment; air cleaner; oil filter; gasoline strainer; crankcase ventilator; new type tire carrier for one tire only, with one extra demountable rim; double screw type jack; high pressure grease gun; tool kit; pump; rear vision mirror.

Closed Models—Adjustable driving seats except in Model 50L; side cowl ventilators; new type luxury seat cushions; nickel-finished foot rest in rear compartments; high grade carpets; double-blade, electric windshield wiper. Model 54CC double-blade wiper, vacuum type (not electrically operated).

Open Models—Full, ventilating windshield, upper part adjustable and whole shield folds forward if desired; side cowl ventilators except on Model 25; special finish, leather upholstery; neat, leather robe straps; natural wood bows for tops; tailored dust cover; side curtains with large pyralin lights, fitting conveniently into large door pockets; rear deck compartments fully trimmed; rubber mats for floor; single-blade vacuum type wiper (not electrically operated).

Special Equipment—Demountable wood, wire, and disc wheels; fender wells for spare tires; special locks and supports for fender well mountings; folding trunk racks; chrome-finished bumpers of special design; spare tires are extra equipment.

B U I C K M O T O R C O M P A N Y

Division of General Motors Corporation

FLINT, MICHIGAN

Sparkling Beauty - Matchless Performance *-and a Wide Range of Selection!*

Not only beauty—not only luxury—not only thrilling performance—but an exceptionally wide range of selection distinguishes the new Buick line.

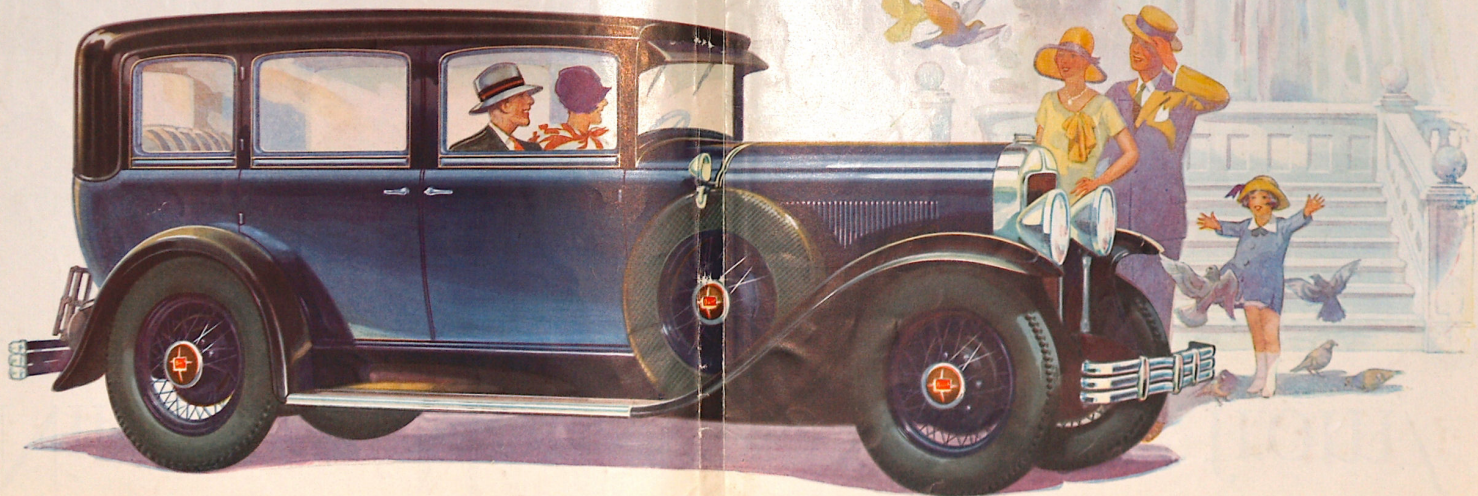
There are nineteen luxurious body types on three wheelbase lengths of 116, 121, and 129 inches—a distinctive Buick model for every taste and need.

The same incomparable smartness and luxury—the same thoroughly-proved engineering features which have won world-wide recognition for Buick performance, reliability and stamina, characterize

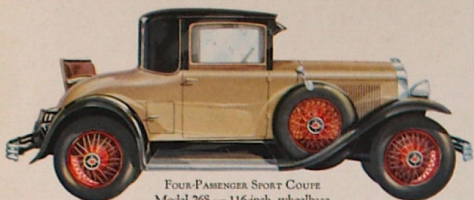
each of the nineteen models of this new Buick line.

Don't be content with merely viewing Buick's masterpiece bodies. DRIVE the car. Experience the thrilling new elements of power, getaway, swiftness, and stamina which distinguish it from all other automobiles. GET BEHIND THE WHEEL... and get the facts about Buick performance leadership.

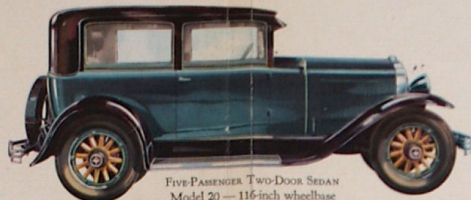
No matter how much you pay, nor which body type you select, you are buying the best when you choose a Buick.



Nineteen Models to Choose from!



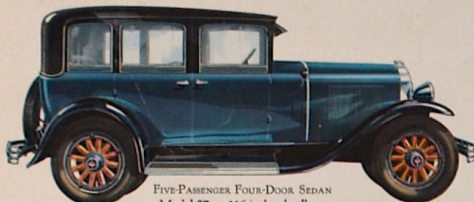
FOUR-PASSENGER SPORT COUPE
Model 26S — 116-inch wheelbase
Price \$1,250



FIVE-PASSENGER TWO-DOOR SEDAN
Model 20 — 116-inch wheelbase
Price \$1,220

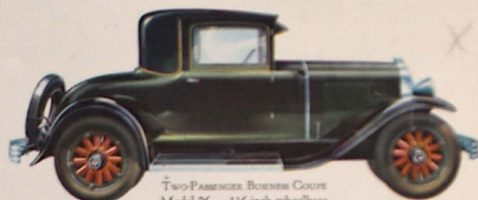


FIVE-PASSENGER SPORT TOURING
Model 25 — 116-inch wheelbase
Price \$1,225

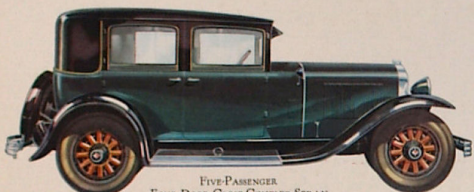


FIVE-PASSENGER FOUR-DOOR SEDAN
Model 27 — 116-inch wheelbase
Price \$1,320

Series 116--Five Models
The five models of Series 116—two sedans, two coupes, and the five-passenger touring car—not only meet a wide range of individual and family requirements, but offer unrivaled value, for they embody the same proven engineering design and the same superlative workmanship as the larger wheelbase Buicks.
Each of these cars is powered by the Buick six-cylinder valve-in-head engine, and built on the famous Buick chassis. And each features the beautiful new Masterpiece Body by Fisher, with all the style advancements which these bodies incorporate.
The price range in Series 116 is from \$1,195 to \$1,320, F.O.B. Factory, Flint.



TWO-PASSENGER BUSINESS COUPE
Model 26 — 116-inch wheelbase
Price \$1,195



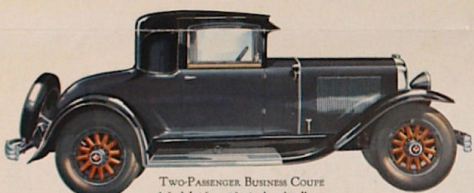
FIVE-PASSENGER
FOUR-DOOR CLOSE-COUPLED SEDAN
Model 41 — 121-inch wheelbase
Price \$1,450



FOUR-PASSENGER SPORT ROADSTER
Model 44 — 121-inch wheelbase
Price \$1,315



FOUR-PASSENGER SPORT COUPE
Model 46S — 121-inch wheelbase
Price \$1,450



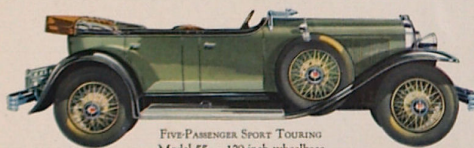
TWO-PASSENGER BUSINESS COUPE
Model 46 — 121-inch wheelbase
Price \$1,395



FOUR-PASSENGER COUPE
Model 48 — 121-inch wheelbase
Price \$1,445

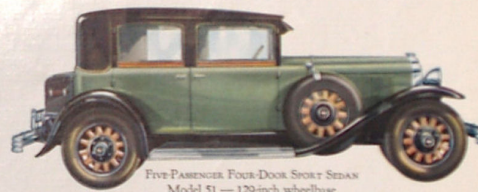


FIVE-PASSENGER FOUR-DOOR SEDAN
Model 47 — 121-inch wheelbase
Price \$1,520



FIVE-PASSENGER SPORT TOURING
Model 55 — 129-inch wheelbase
Price \$1,525

Series 121--Six Models
Two sedans, three coupes . . . including the newly-introduced Four-Passenger Coupe . . . and the spirited Roadster, make up Buick's 121-inch wheelbase series for 1920. The wheelbase lengths of these models, like those of the rest of the line, are increased one inch this year.
The six models of Series 121 combine exceptional beauty, smartness, and all-round utility with that thrilling order of performance for which the 1920 Buick is famous in every corner of the country. Like the cars of Series 120, these models are powered by the 90½-horsepower Buick six-cylinder valve-in-head engine.
The price range in Series 121 is from \$1,325 to \$1,520, F.O.B. Factory, Flint.



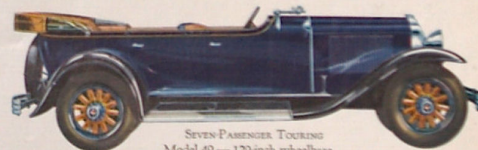
FIVE-PASSENGER FOUR-DOOR SPORT SEDAN
Model 51 — 129-inch wheelbase
Price \$1,875



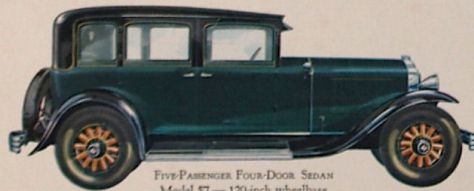
FOUR-PASSENGER
DELUXE CONVERTIBLE COUPE
Model 54CC — 129-inch wheelbase
Price \$1,875



SEVEN-PASSENGER FOUR-DOOR SEDAN
Model 50 — 129-inch wheelbase
Price \$2,045

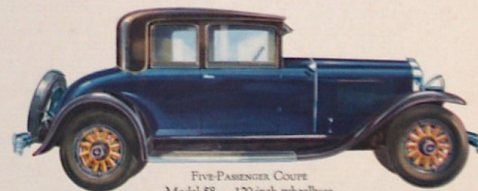


SEVEN-PASSENGER TOURING
Model 49 — 129-inch wheelbase
Price \$1,850



FIVE-PASSENGER FOUR-DOOR SEDAN
Model 57 — 129-inch wheelbase
Price \$1,935

This Model is also furnished as a Limousine, adapting it to owner or chauffeur use.
Price \$2,145



FIVE-PASSENGER COUPE
Model 58 — 129-inch wheelbase
Price \$1,865

Prices are F.O.B. Factory, Flint, Mich., and are subject to change without notice.
Special Equipment Extra