



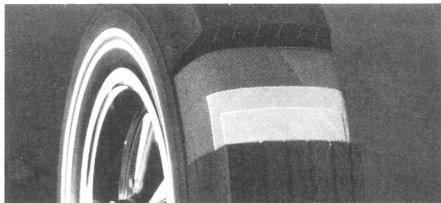
Roof drip scalp moldings, whitewalls and deluxe wheel covers shown are available at extra cost.

ANNOUNCING AMERICA'S NEWEST LOW-PRICED HARDTOP
It only takes a little to move up a lot!

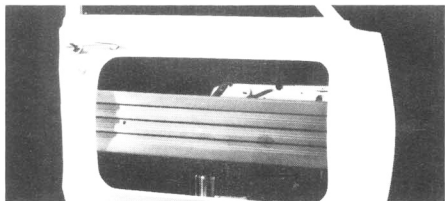
New Pontiac T-37 Hardtop Coupe's low, low price includes big-car values like these. Check them.



Windshield antenna gives great reception, eliminates antenna breakage and improves exterior appearance.



Longer tire life, better traction, more resistance to chuckhole damage. All yours with bias-belted tires.



Side-guard door beam of sturdy, reinforced steel is built in for additional security.



Above all, the T-37 is a Pontiac Wide-Track. And a used Pontiac can mean a better deal at trade-in time.

